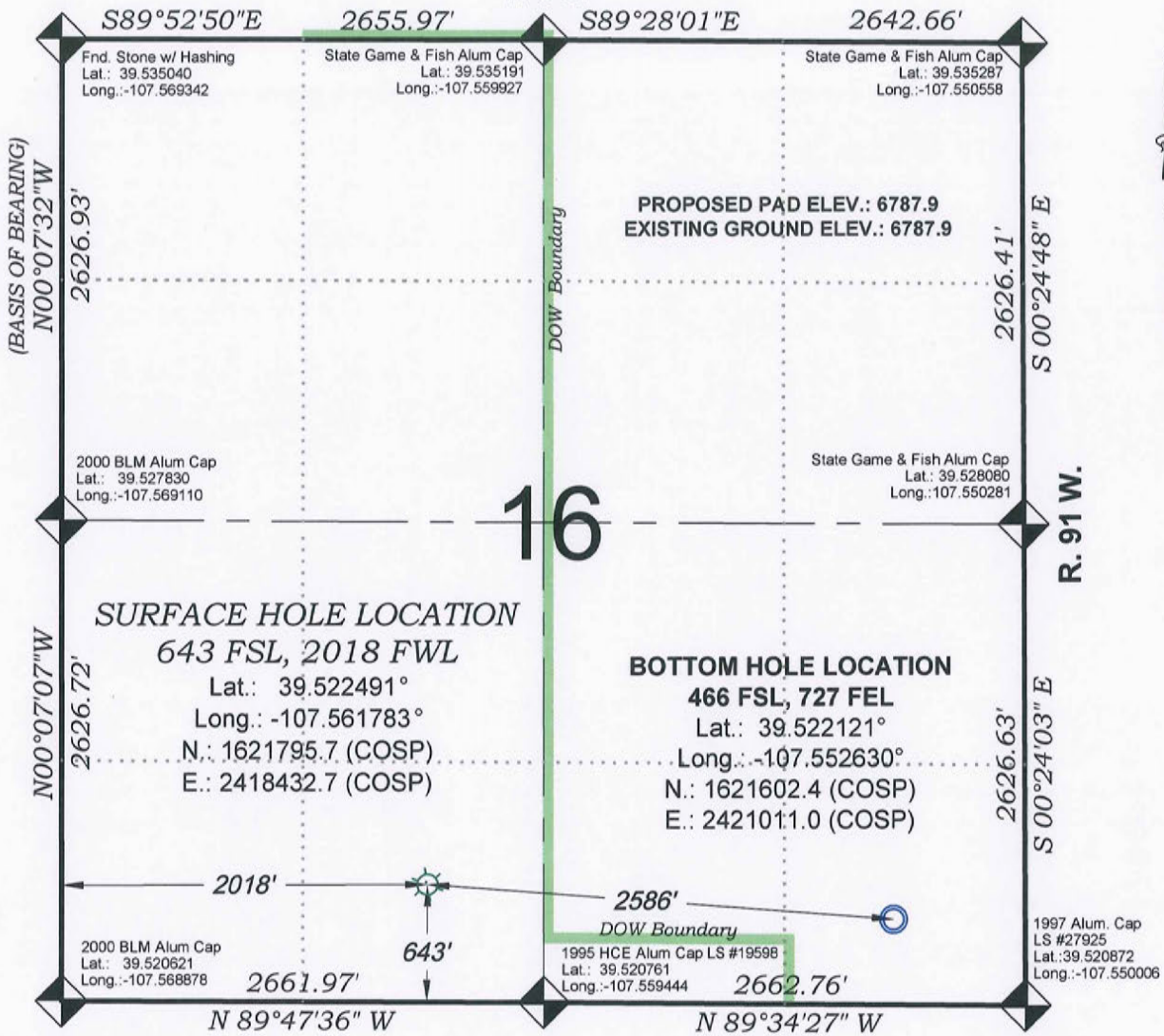


# Jolley Family LLLP KP 444-16

T. 6 S.



SEE CONSTRUCTION LAYOUT  
PLAT FOR VISIBLE IMPROVEMENTS  
WITHIN 500' OF THIS LOCATION



## SURVEYORS STATEMENT

I, MICHAEL J. LANGHORNE, A REGISTERED LAND SURVEYOR IN THE STATE OF COLORADO DO HEREBY CERTIFY THAT THE SURVEY SHOWN HEREON WAS PREPARED UNDER MY DIRECT SUPERVISION AND HAS BEEN STAKED ON THE GROUND AS SHOWN ON THE PLAT AND CHECKING THAT THIS MAP IS A TRUE REPRESENTATION THEREOF.

MICHAEL J. LANGHORNE, COLORADO REGISTRATION NO. 36572  
FOR AND ON BEHALF OF  
BOOKCLIFF SURVEY SERVICES, INC.

## REFERENCES

- 1) DEPENDENT RESURVEY T. 6 S., R. 91 W., 6<sup>th</sup> P.M. (GLO NOTES)
- 2) U.S.G.S. QUAD: NEW CASTLE, CO

REVISED: 1/27/14

136 East Third Street  
Rifle, Colorado  
81650 Ph. (970)  
625-2720 Fax (970)  
625-2773

**BOOKCLIFF**  
Survey Services, Inc.

SURVEY DATE: 8/25/11  
MAP DATE: 2/29/12  
SCALE: 1" = 1000'  
PLAT: 1 of 1  
PROJECT: Kokopelli

## - LEGEND -

FIELD LOCATED SECTION  
MONUMENTS AS DESCRIBED

FIELD SURVEYED  
WELL LOCATION

CALCULATED BOTTOM  
HOLE LOCATION

CALCULATED SECTION  
CORNER LOCATION

## NOTES

- 1) ELEVATIONS BASED ON N.A.V.D. 1988 PUBLISHED COORDINATES.
- 2) LATITUDES AND LONGITUDES ARE BASE ON NAD 83, PUBLISHED COORDINATES
- 3) STATE PLANE COORDINATES ARE BASED ON COLORADO CENTRAL ZONE, U.S. SURVEY FEET.
- 4) ELEVATION MASK SET TO 15"
- 5) GPS OPERATOR J. KIRKPATRICK, OBSERVED A PDOP OF 0.8 FOR SURVEY POINT NUMBER 72000.
- 6) SURFACE AND BOTTOM HOLE LOCATIONS ARE MEASURED 90° FROM SECTION LINES.

**WELL LOCATION PLAT Prepared for:**  
**WPXENERGY** WPX Energy Rocky Mountain, LLC

SE1/4 SW1/4, SECTION 16  
T. 6 S., R. 91 W. of the 6th. P.M.  
GARFIELD COUNTY, COLORADO