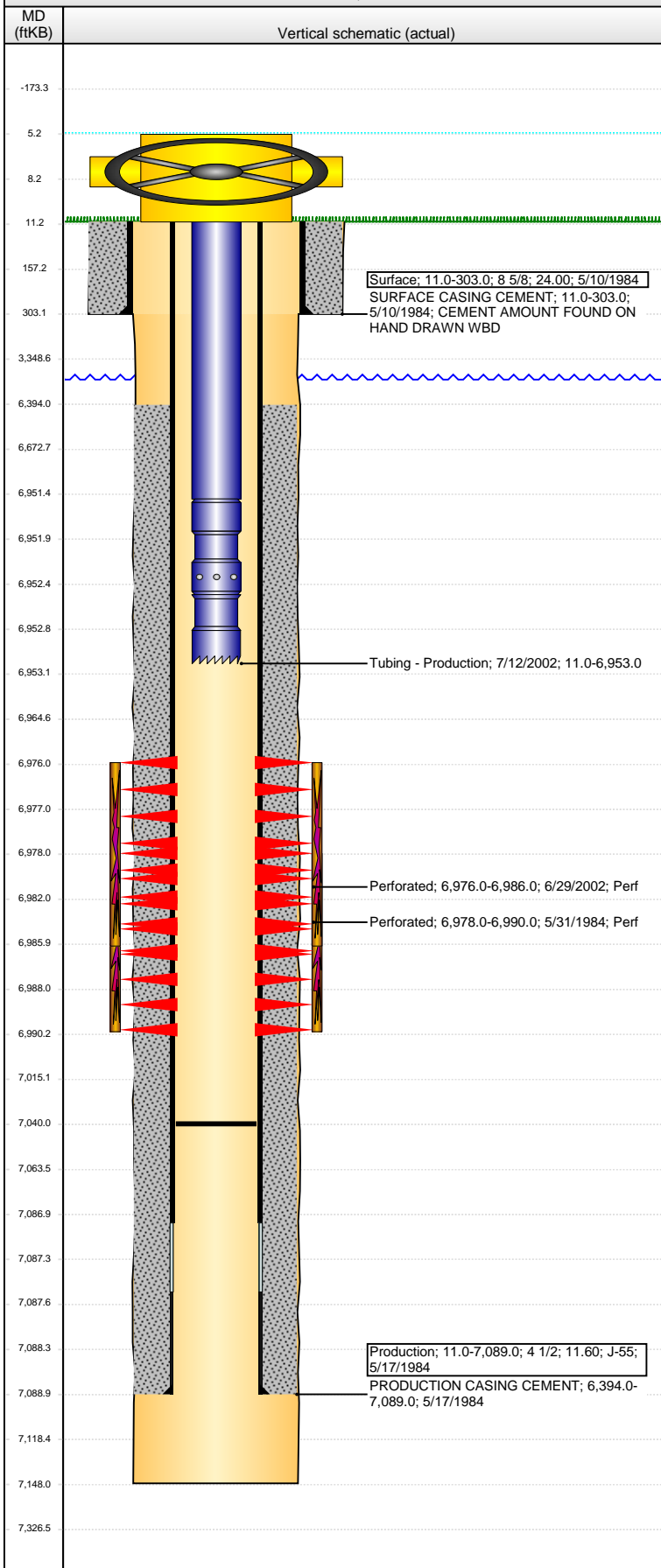


Well Name: COX 08-01

VERTICAL - ORIGINAL HOLE, 7/15/2014 12:06:04 PM



Well Header

API	Business Unit	District	Well Config
05-123-11796	WATTENBERG	15	VERTICAL
Original KB Elevation (ft)	KB - GL / MSL (ftKB)	Spud Date	P & A Date
4,779.00	11.00	5/9/1984	

Comment
DRILLING RPT AND STATE RPT HAVE NO RECORD OF SURFACE HOLE/SURFACE CASING. SURFACE HOLE/CASING INFO CAME FROM CBL AND ONE HAND DRAWN WBD IN GREELEY FILE
DISCREPANCY: TD DATE - DRL RPT 5/16/1984, ST RPT 5/17/1984. DR RPT TOD 6/14/1984; ST RPT TOD 6/8/1984

Directions To Well

Congressional Location

Quarter 1	Quarter 2	Quarter 3	Quarter 4	Section	Township	Twnshp N...	Range	Rng E/W Dir
		NE	NW	8	4	N	64	W

Bottom Hole Location

North-South Distance (ft)	From N or S Line	East-West Distance (ft)	From E or W Line

Plug Back Total Depths

Date	Depth (ftKB)	Method	Com
5/29/1984	7,009.0	CASED HOLE LOG	DEPTH LOGGER ON CBL
7/12/2002	7,040.0	TAG	CLEAN OUT TO LAND TUBING

Wellbore Sections

Section Des	Size (in)	Act Top, MD (ftKB)	Act Btm, MD (ftKB)
SURFACE	12 1/4	11.0	303.0
PRODUCTION	7 7/8	303.0	7,148.0

Zone Statuses

Zone Name	Status Date	Status	Job
CODELL	6/8/1984	PR	DRILLING/COMPLETION - ORIGINAL, 5/9/1984 00:00
CODELL	7/12/2002	PR	RE-FRAC, 6/28/2002 00:00

Casing Strings

Surface, 303.0ftKB

Casing Description	Run Date	OD (in)	Wt/Len (l...)	Grade	Top, MD (ft...)	MD (ftKB)
Surface	5/10/1984	8 5/8	24.00		11.0	303.0

Production, 7,089.0ftKB

Casing Description	Run Date	OD (in)	Wt/Len (l...)	Grade	Top, MD (ft...)	MD (ftKB)
Production	5/17/1984	4 1/2	11.60	J-55	11.0	7,089.0

Cement

Description	Top Depth (ftKB)	Bottom Depth (ftKB)
SURFACE CASING CEMENT	11.0	303.0
Description	Top Depth (ftKB)	Bottom Depth (ftKB)
PRODUCTION CASING CEMENT	6,394.0	7,089.0

Tubing Components

Item Des	OD (in)	Wt (lb/ft)	Grade	Jts	Len (ft)	Btm (ftKB)	Btm (TVD) (ftKB)
Tubing	2 3/8	5.95		213	6,940.50	6,951.5	
Seating Nipple	2 3/8			1	1.00	6,952.5	
Notched collar	2 3/8			1	0.50	6,953.0	

Perforation Data

Zone	Bnch/St g	Entered Shot Total	Top (ftKB)	Btm (ftKB)	Date
CODELL, ORIGINAL HOLE		40	6,976.00	6,986.00	6/29/2002
CODELL, ORIGINAL HOLE			6,978.00	6,990.00	5/31/1984

Stimulations & Treatments

Date	Zone	Primary Job Type
6/6/1984	CODELL, ORIGINAL HOLE	DRILLING/COMPLETION - ORIGINAL
Technical Result	Tech Result Details	Tech Result Note

Comment

Date	Zone	Primary Job Type
7/10/2002	CODELL, ORIGINAL HOLE	RE-FRAC
Technical Result	Tech Result Details	Tech Result Note

Other In Hole

Run Date	Des	OD (in)	Top (ftKB)	Btm (ftKB)

Well Name: COX 08-01

VERTICAL - ORIGINAL HOLE, 7/15/2014 12:06:06 PM

Logs

Date	Type	Top, MD (ftKB)	Btm, MD (ftKB)
5/15/1984	COMPENSATED NEUTRON	2,750.0	7,134.0
5/15/1984	INDUCTION	300.0	7,134.0
5/29/1984	CEMENT BOND	6,350.0	7,006.0

