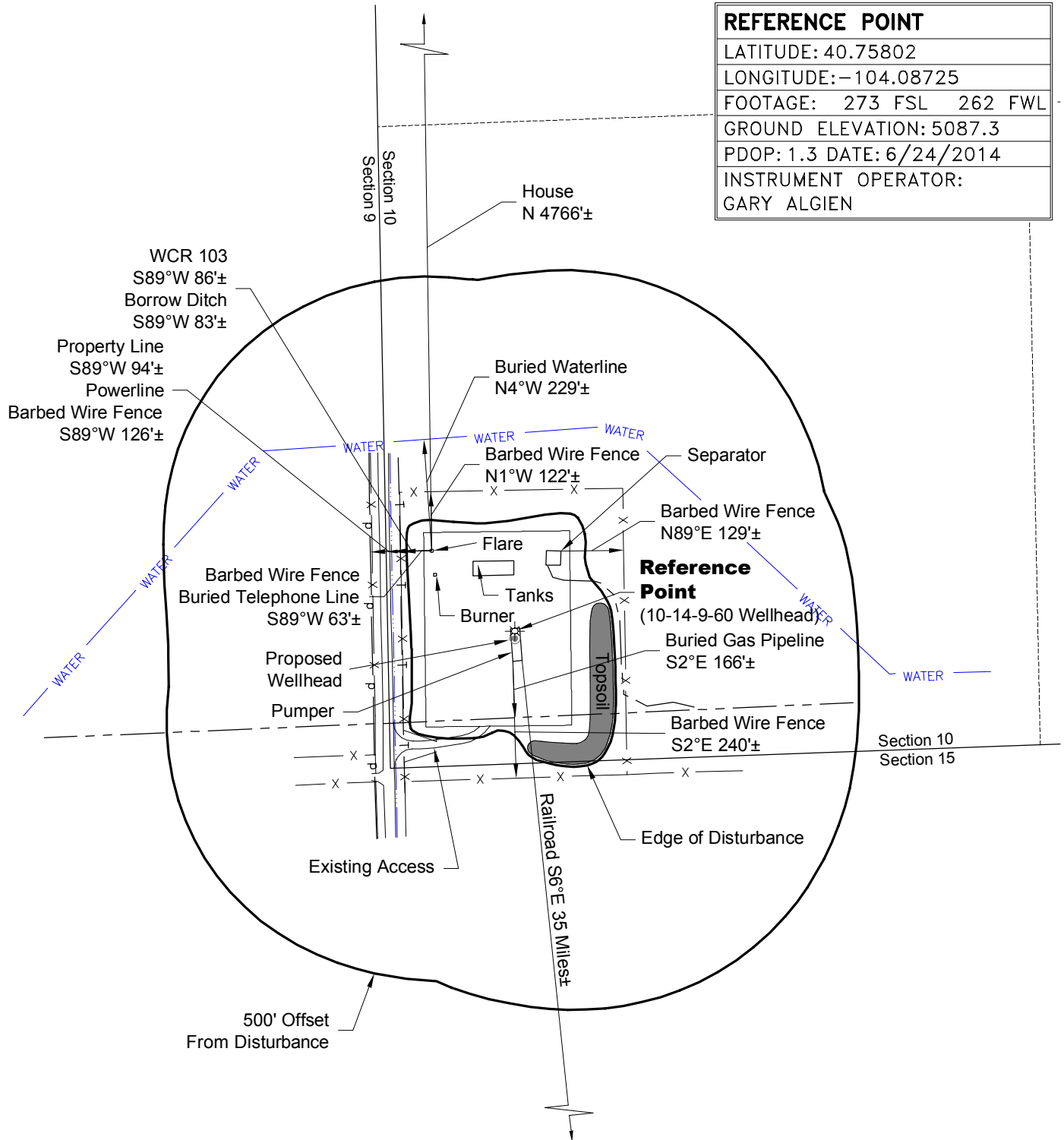


LOCATION DRAWING

REFERENCE POINT

LATITUDE: 40.75802
 LONGITUDE: -104.08725
 FOOTAGE: 273 FSL 262 FWL
 GROUND ELEVATION: 5087.3
 PDOP: 1.3 DATE: 6/24/2014
 INSTRUMENT OPERATOR:
 GARY ALGIEN



DISTURBANCE ACREAGE:
 4.3± DRILLING OPERATIONS

NOTE:

ALL PRODUCTION FACILITIES WILL BE ON PAD.

7/2/14



North

0 300 600

Graphic Scale in Feet
 1 inch = 300 feet



LAND SURVEYING AND MAPPING
 LAFAYETTE - WINTER PARK
 Ph 303 666 0379 Fx 303 665 6320

CARRIZO NIOBRARA LLC
DIETZLER 10-14-9-60 PAD

SW1/4 SW1/4 SEC. 10 T9N R60W
6th PM WELD COUNTY COLORADO