

**ANADARKO PETROLEUM CORP - EBUS  
DO NOT MAIL - PO BOX 4995  
THE WOODLANDS, Texas**

Scott 26N-32 HZ

**Majors 29**

## **Post Job Summary** **Cement Surface Casing**

Date Prepared: 3/11/2014  
Version: 1

Service Supervisor: SMITH, KC

Submitted by: PRUDHOMME, JOSHUA

**HALLIBURTON**

# HALLIBURTON

## *Pumping Schedule*

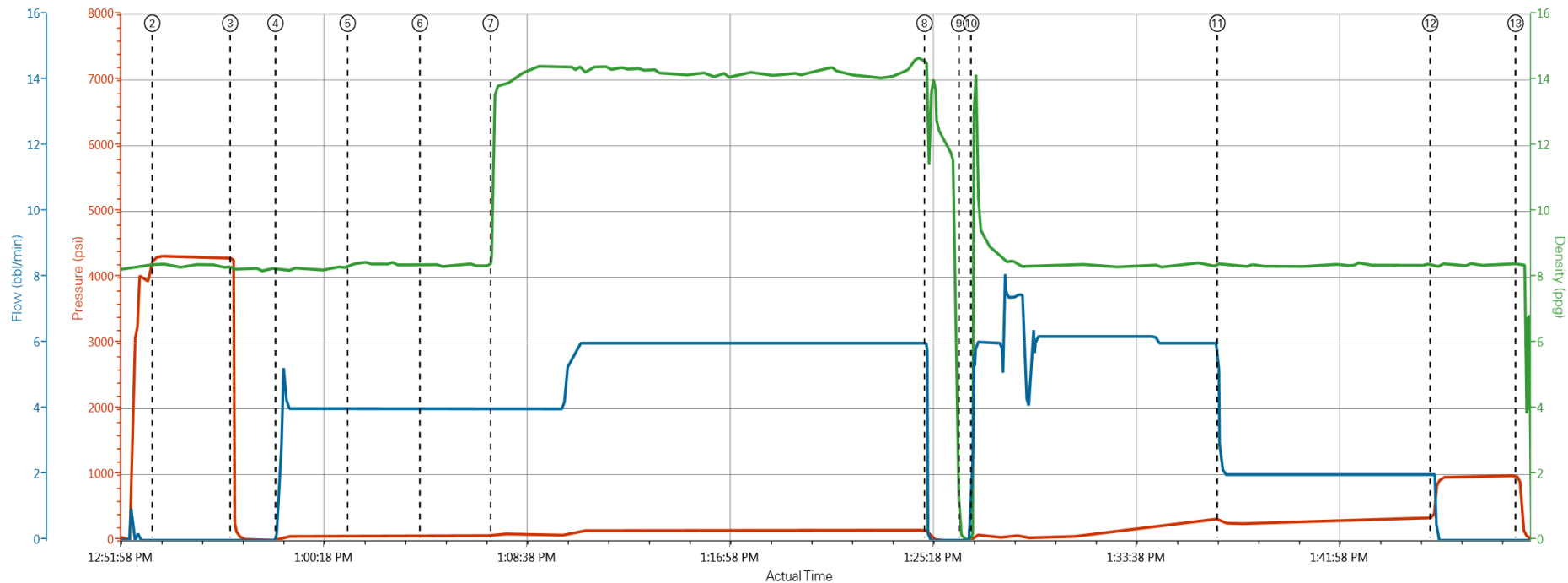
---

Stage /Plug #	Fluid #	Fluid Type	Fluid Name	Surface Density lbm/gal	Avg Rate bbl/min	Surface Volume	Downhole Volume
1	1	Spacer	Fresh Water Spacer	8.33	4.0	10.0 bbl	10.0 bbl
1	2	Spacer	MUD FLUSH	8.50	4.0	12.0 bbl	24.0 bbl
1	1	Spacer	Fresh Water Spacer	8.33	4.0	10.0 bbl	10.0 bbl
1	3	Cement Slurry	SwiftCem B2	14.2	6.0	383.0 sacks	383.0 sacks

# HALLIBURTON

## Data Acquisition

Anadarko, Scott 26N-32 HZ, Surface



PS Pump Press (psi) DH Density (ppg) Comb Pump Rate (bbl/min)

① Start Job 43;0.51;0    ④ Pump Fresh Water 4;8.28;1.4    ⑦ Pump Lead Cement 75;11.99;4    ⑩ Pump Displacement 16;9.31;3.4    ⑬ Check Floats 955;8.44;0  
 ② Test Lines 4290;8.38;0    ⑤ Pump Mud Flush 63;8.33;4    ⑧ Shutdown 153;14.56;5.8    ⑪ Slow Rate 312;8.41;2.7  
 ③ Test Lines 4289;8.25;0    ⑥ Pump Fresh Water 66;8.39;4    ⑨ Drop Top Plug -9;0.13;0    ⑫ Bump Plug 346;8.4;2

▲ HALLIBURTON | iCem® Service

Created: 2014-02-19 12:19:48, Version: 3.0.121

Edit

## Service Supervisor Reports

### Job Log

Date/Time	Chart #	Activity Code	Pump Rate	Cum Vol	Pump	Pressure (psig)	Comments
02/19/2014 08:00		Call Out					Crew Called out for Job. Requested on location @ 12:00 p.m.
02/19/2014 10:25		Pre-Convoy Safety Meeting					Met w/crew to discuss safety and hazards of travel to location
02/19/2014 10:30		Depart from Service Center or Other Site					Entered into Journey Management.
02/19/2014 11:30		Arrive At Loc					Ended Journey Management. Rig crew rigging up to start Circulating.
02/19/2014 11:40		Assessment Of Location Safety Meeting					Met w/crew to discuss hazards of site, location of materials and safety precautions. Met with Company rep to get numbers and discuss when and where to spot equipment.
02/19/2014 11:45		Comment					Spot Equipment into position.
02/19/2014 11:55		Pre-Rig Up Safety Meeting					Met w/crew to discuss the best way to spot the equipment and rig up. Also went over safety and hazards involved.
02/19/2014 12:00		Rig-Up Equipment					Rig up water, product, and iron as far as we can go.
02/19/2014 12:40		Pre-Job Safety Meeting					Met w/Rig Crew, Co. Rep, and our crew to discuss job procedures, contingencies, and safety measures.
02/19/2014 12:45		Rig-Up Equipment					Stab cmt head and finish rigging up the iron.
02/19/2014 12:52		Other					Fill lines with fresh water for pressure test
02/19/2014 12:53		Test Lines					Pressure test iron to 3000 psi
02/19/2014 12:58		Pump Water	4	10		4.0	Pump Fresh Water.
02/19/2014 13:01		Pump Spacer	4	12		63.0	Pump Mud Flush.
02/19/2014 13:04		Pump Spacer	4	10		66.0	Pump Fresh Water.
02/19/2014 13:07		Pump Cement	6	105		75.0	Pumped 383 sks SwiftCem Cement @ 14.2 lb/gal, 1.54 cuft/sk, 7.66 gal/sk.
02/19/2014 13:25		Shutdown				153.0	Shutdown.
02/19/2014 13:26		Drop Top Plug					Drop top plug. Wash pumps and lines on top of the plug.
02/19/2014 13:26		Pump Displacement	6			16.0	Pump Displacement 75 bbls of Fresh Water with Aldacide.
02/19/2014 13:37		Slow Rate	2	55		312.0	Slow displacement rate to 2 barrels per minute after 55 barrels displacement gone.
02/19/2014 13:45		Bump Plug	2	75		346.0	Bump plug after 75 barrels displacement gone. Over pressure to 955 psi.
02/19/2014 13:49		Check Floats					Held for 3 min, check floats per Company Rep. Floats held. 1 bbl back.
02/19/2014 14:00		End Job					Job Complete
02/19/2014 14:05		Post-Job Safety Meeting (Pre Rig-Down)					Met w/crew to discuss rigging down safely.
02/19/2014 14:15		Rig-Down Equipment					Rig everything down.
02/19/2014 14:45		Pre-Convoy Safety Meeting					Met w/crew to discuss fit-for-duty, safety and hazards of travel back.
02/19/2014 15:00		Depart Location for Service Center or Other Site					Entered into Journey Management.

### The Road to Excellence Starts with Safety

Sold To #: 300466	Ship To #: 3282171	Quote #:	Sales Order #: 901132716
Customer: ANADARKO PETROLEUM CORP - EBUS		Customer Rep: 29, Majors	
Well Name: Scott		Well #: 26N-32 HZ	API/UWI #: 05-123-38827
Field:	City (SAP): FIRESTONE	County/Parish: Weld	State: Colorado
Contractor: Majors		Rig/Platform Name/Num: Majors 29	
Job Purpose: Cement Surface Casing			
Well Type: Development Well		Job Type: Cement Surface Casing	
Sales Person: FLING, MATTHEW	Srvc Supervisor: SMITH, KC		MBU ID Emp #: 462378

### Job Personnel

HES Emp Name	Exp Hrs	Emp #	HES Emp Name	Exp Hrs	Emp #	HES Emp Name	Exp Hrs	Emp #
EAVES, WESTON	3.5	539193	ELAM, JUSTIN Wade	3.5	551617	SMITH, KC Hyrum	3.5	462378

### Equipment

HES Unit #	Distance-1 way	HES Unit #	Distance-1 way	HES Unit #	Distance-1 way	HES Unit #	Distance-1 way
10951248	20 mile	11501021	20 mile	11566182	20 mile	11645065	20 mile

### Job

Formation Name	Formation Depth (MD)	Top	Bottom	Form Type	Job depth MD	Water Depth	Perforation Depth (MD)	From	To
				BHST	1232. ft				
					Job Depth TVD	4. ft			
					Wk Ht Above Floor				

### Job Times

Date	Time	Time Zone
19 - Feb - 2014	08:00	MST
19 - Feb - 2014	11:30	MST
19 - Feb - 2014	12:50	MST
19 - Feb - 2014	14:00	MST
19 - Feb - 2014	15:00	MST

### Fluid Data

#### Stage/Plug #: 1

Fluid #	Stage Type	Fluid Name	Qty	Qty uom	Mixing Density lbm/gal	Yield ft3/sk	Mix Fluid Gal/sk	Rate bbl/min	Total Mix Fluid Gal/sk
1	Fresh Water Spacer		10.0	bbl	8.33			4.0	
2	MUD FLUSH		12.0	bbl	8.5			4.0	
	42 gal/bbl	MUD FLUSH III - SBM (528788)							
	0.4 lbm/bbl	MUD FLUSH III, 40 LB SACK (101633304)							
	42 gal/bbl	FRESH WATER							
1	Fresh Water Spacer		10.0	bbl	8.33			4.0	
3	SwiftCem B2	SWIFTCem (TM) SYSTEM (452990)	383	sacks	14.2	1.54	7.66	6.0	7.66
	7.66 Gal	FRESH WATER							

### Calculated Values

### Pressures

### Volumes

Displacement		Shut In: Instant		Lost Returns		Cement Slurry		Pad	
Top Of Cement		5 Min		Cement Returns		Actual Displacement	75.0	Treatment	
Frac Gradient		15 Min		Spacers		Load and Breakdown		Total Job	

<b>Rates</b>											
Circulating		Mixing		Displacement		Avg. Job					
Cement Left In Pipe	Amount	0 ft	Reason	Shoe Joint							
Frac Ring # 1 @	ID		Frac ring # 2 @	ID		Frac Ring # 3 @	ID				
The Information Stated Herein Is Correct				Customer Representative Signature							

