

# Synergy Resources

Well Name: **SRC Wiedeman A-5-3NHZ**

Surface Location: SRC Wiedeman Pad Sec.5-T5N-R66W  
North American Datum 1983 , US State Plane 1983 , Colorado Northern Zone

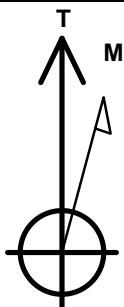
Ground Elevation: 4783.0

+N/-S	+E/-W	Northing	Easting	Latitude	Longitude	Slot
0.0	0.0	1401462.33	3194382.02	40.433315	-104.801715	

RKB - 13' WELL @ 4796.0ft (RKB - 13')

## WELLBORE TARGET DETAILS

Name	TVD	+N/-S	+E/-W	Shape
SHL 1408'FNL & 2438'FEL, Sec.5		0.0	0.0	Point
BHL 1091'FNL & 2149'FWL, Sec.3	7053.0	388.2	9958.5	Point



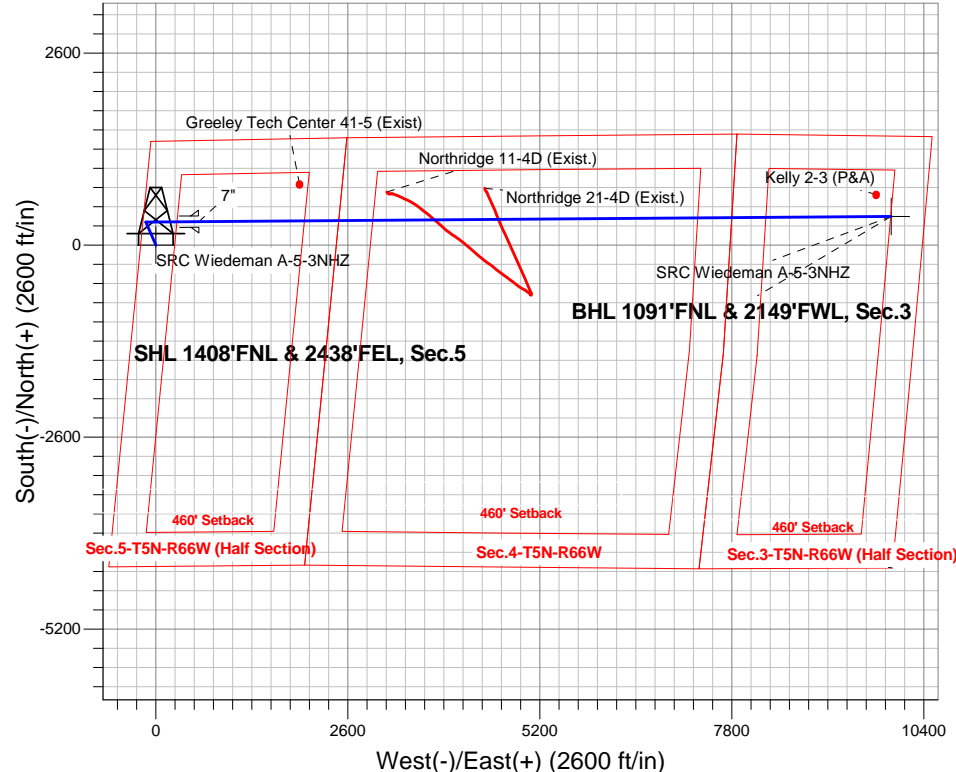
Azimuths to True North  
Magnetic North: 8.48°

Magnetic Field  
Strength: 52826.5snT  
Dip Angle: 66.97°  
Date: 6/24/2014  
Model: IGRF2010

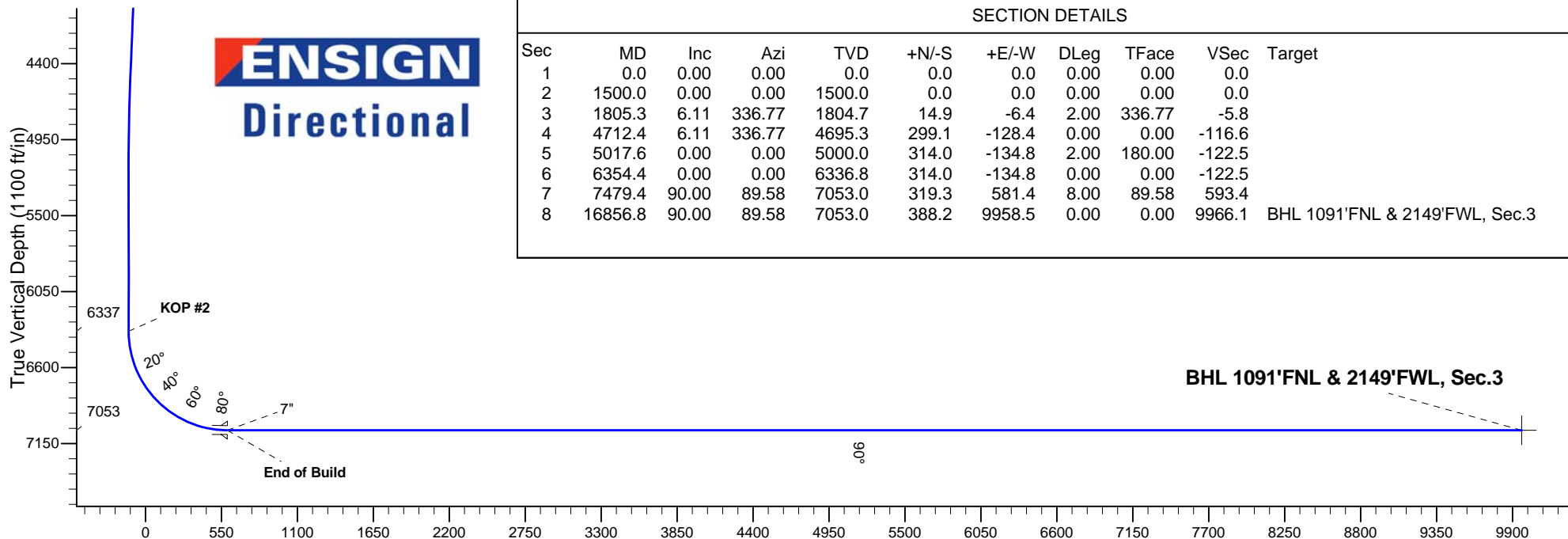
SRC Wiedeman Pad Sec.5-T5N-R66W  
SRC Wiedeman A-5-3NHZ  
Plan #1 (6-24-14)  
14:25, June 25 2014

## ANNOTATIONS

TVD	MD	Annotation
1500.0	1500.0	KOP #1
6336.8	6354.4	KOP #2
7053.0	7479.4	End of Build



**ENSIGN**  
Directional



## SECTION DETAILS

Sec	MD	Inc	Azi	TVD	+N/-S	+E/-W	DLeg	TFace	VSoc	Target
1	0.0	0.00	0.00	0.0	0.0	0.0	0.00	0.00	0.0	
2	1500.0	0.00	0.00	1500.0	0.0	0.0	0.00	0.00	0.0	
3	1805.3	6.11	336.77	1804.7	14.9	-6.4	2.00	336.77	-5.8	
4	4712.4	6.11	336.77	4695.3	299.1	-128.4	0.00	0.00	-116.6	
5	5017.6	0.00	0.00	5000.0	314.0	-134.8	2.00	180.00	-122.5	
6	6354.4	0.00	0.00	6336.8	314.0	-134.8	0.00	0.00	-122.5	
7	7479.4	90.00	89.58	7053.0	319.3	581.4	8.00	89.58	593.4	
8	16856.8	90.00	89.58	7053.0	388.2	9958.5	0.00	0.00	9966.1	BHL 1091'FNL & 2149'FWL, Sec.3

**BHL 1091'FNL & 2149'FWL, Sec.3**

Vertical Section at 87.77° (1100 ft/in)



## **Synergy Resources**

**Sec.5-T5N-R66W**

**SRC Wiedeman Pad Sec.5-T5N-R66W**

**SRC Wiedeman A-5-3NHZ**

**Wellbore #1**

**Plan: Plan #1 (6-24-14)**

## **Standard Planning Report**

**25 June, 2014**



<b>Database:</b>	Landmark	<b>Local Co-ordinate Reference:</b>	Well SRC Wiedeman A-5-3NHZ
<b>Company:</b>	Synergy Resources	<b>TVD Reference:</b>	WELL @ 4796.0ft (RKB - 13')
<b>Project:</b>	Sec.5-T5N-R66W	<b>MD Reference:</b>	WELL @ 4796.0ft (RKB - 13')
<b>Site:</b>	SRC Wiedeman Pad Sec.5-T5N-R66W	<b>North Reference:</b>	True
<b>Well:</b>	SRC Wiedeman A-5-3NHZ	<b>Survey Calculation Method:</b>	Minimum Curvature
<b>Wellbore:</b>	Wellbore #1		
<b>Design:</b>	Plan #1 (6-24-14)		

<b>Project</b>	Sec.5-T5N-R66W		
<b>Map System:</b>	US State Plane 1983	<b>System Datum:</b>	Mean Sea Level
<b>Geo Datum:</b>	North American Datum 1983		Using Well Reference Point
<b>Map Zone:</b>	Colorado Northern Zone		Using geodetic scale factor

Site						SRC Wiedeman Pad Sec.5-T5N-R66W											
<b>Site Position:</b>						<b>Northing:</b>			1,401,391.96 ft			<b>Latitude:</b>			40.433123		
<b>From:</b>			Lat/Long			<b>Easting:</b>			3,194,327.74 ft			<b>Longitude:</b>			-104.801912		
<b>Position Uncertainty:</b>			0.0 ft			<b>Slot Radius:</b>			"			<b>Grid Convergence:</b>			0.45 °		

Well	SRC Wiedeman A-5-3NHZ					
Well Position	+N/-S	69.9 ft	Northing:	1,401,462.33 ft	Latitude:	40.433315
	+E/-W	54.8 ft	Easting:	3,194,382.02 ft	Longitude:	-104.801715
Position Uncertainty		0.0 ft	Wellhead Elevation:	ft	Ground Level:	4,783.0 ft

<b>Wellbore</b>	Wellbore #1				
<b>Magnetics</b>	<b>Model Name</b>	<b>Sample Date</b>	<b>Declination (°)</b>	<b>Dip Angle (°)</b>	<b>Field Strength (nT)</b>
	IGRF2010	6/24/2014	8.48	66.97	52,827

<b>Design</b>	Plan #1 (6-24-14)			
<b>Audit Notes:</b>				
<b>Version:</b>	<b>Phase:</b>	PROTOTYPE	<b>Tie On Depth:</b>	0.0
<b>Vertical Section:</b>	<b>Depth From (TVD) (ft)</b>	<b>+N/-S (ft)</b>	<b>+E/-W (ft)</b>	<b>Direction (°)</b>
	0.0	0.0	0.0	87.77

<b>Plan Sections</b>										
Measured Depth (ft)	Inclination (°)	Azimuth (°)	Vertical Depth (ft)	+N/-S (ft)	+E/-W (ft)	Dogleg Rate (°/100ft)	Build Rate (°/100ft)	Turn Rate (°/100ft)	TFO (°)	Target
0.0	0.00	0.00	0.0	0.0	0.0	0.00	0.00	0.00	0.00	
1,500.0	0.00	0.00	1,500.0	0.0	0.0	0.00	0.00	0.00	0.00	
1,805.3	6.11	336.77	1,804.7	14.9	-6.4	2.00	2.00	0.00	336.77	
4,712.4	6.11	336.77	4,695.3	299.1	-128.4	0.00	0.00	0.00	0.00	
5,017.6	0.00	0.00	5,000.0	314.0	-134.8	2.00	-2.00	0.00	180.00	
6,354.4	0.00	0.00	6,336.8	314.0	-134.8	0.00	0.00	0.00	0.00	
7,479.4	90.00	89.58	7,053.0	319.3	581.4	8.00	8.00	0.00	89.58	
16,856.8	90.00	89.58	7,053.0	388.2	9,958.5	0.00	0.00	0.00	0.00	BHL 1091'FNL & 21

<b>Database:</b>	Landmark	<b>Local Co-ordinate Reference:</b>	Well SRC Wiedeman A-5-3NHZ
<b>Company:</b>	Synergy Resources	<b>TVD Reference:</b>	WELL @ 4796.0ft (RKB - 13')
<b>Project:</b>	Sec.5-T5N-R66W	<b>MD Reference:</b>	WELL @ 4796.0ft (RKB - 13')
<b>Site:</b>	SRC Wiedeman Pad Sec.5-T5N-R66W	<b>North Reference:</b>	True
<b>Well:</b>	SRC Wiedeman A-5-3NHZ	<b>Survey Calculation Method:</b>	Minimum Curvature
<b>Wellbore:</b>	Wellbore #1		
<b>Design:</b>	Plan #1 (6-24-14)		

Planned Survey									
Measured Depth (ft)	Inclination (°)	Azimuth (°)	Vertical Depth (ft)	+N/-S (ft)	+E/-W (ft)	Vertical Section (ft)	Dogleg Rate (°/100ft)	Build Rate (°/100ft)	Turn Rate (°/100ft)
0.0	0.00	0.00	0.0	0.0	0.0	0.0	0.00	0.00	0.00
1.0	0.00	0.00	1.0	0.0	0.0	0.0	0.00	0.00	0.00
<b>SHL 1408'FNL &amp; 2438'FEL, Sec.5</b>									
100.0	0.00	0.00	100.0	0.0	0.0	0.0	0.00	0.00	0.00
200.0	0.00	0.00	200.0	0.0	0.0	0.0	0.00	0.00	0.00
300.0	0.00	0.00	300.0	0.0	0.0	0.0	0.00	0.00	0.00
400.0	0.00	0.00	400.0	0.0	0.0	0.0	0.00	0.00	0.00
500.0	0.00	0.00	500.0	0.0	0.0	0.0	0.00	0.00	0.00
600.0	0.00	0.00	600.0	0.0	0.0	0.0	0.00	0.00	0.00
700.0	0.00	0.00	700.0	0.0	0.0	0.0	0.00	0.00	0.00
800.0	0.00	0.00	800.0	0.0	0.0	0.0	0.00	0.00	0.00
900.0	0.00	0.00	900.0	0.0	0.0	0.0	0.00	0.00	0.00
1,000.0	0.00	0.00	1,000.0	0.0	0.0	0.0	0.00	0.00	0.00
1,100.0	0.00	0.00	1,100.0	0.0	0.0	0.0	0.00	0.00	0.00
1,200.0	0.00	0.00	1,200.0	0.0	0.0	0.0	0.00	0.00	0.00
1,300.0	0.00	0.00	1,300.0	0.0	0.0	0.0	0.00	0.00	0.00
1,400.0	0.00	0.00	1,400.0	0.0	0.0	0.0	0.00	0.00	0.00
1,500.0	0.00	0.00	1,500.0	0.0	0.0	0.0	0.00	0.00	0.00
<b>KOP #1</b>									
1,600.0	2.00	336.77	1,600.0	1.6	-0.7	-0.6	2.00	2.00	0.00
1,700.0	4.00	336.77	1,699.8	6.4	-2.8	-2.5	2.00	2.00	0.00
1,800.0	6.00	336.77	1,799.5	14.4	-6.2	-5.6	2.00	2.00	0.00
1,805.3	6.11	336.77	1,804.7	14.9	-6.4	-5.8	2.00	2.00	0.00
1,900.0	6.11	336.77	1,898.9	24.2	-10.4	-9.4	0.00	0.00	0.00
2,000.0	6.11	336.77	1,998.3	34.0	-14.6	-13.2	0.00	0.00	0.00
2,100.0	6.11	336.77	2,097.8	43.7	-18.8	-17.1	0.00	0.00	0.00
2,200.0	6.11	336.77	2,197.2	53.5	-23.0	-20.9	0.00	0.00	0.00
2,300.0	6.11	336.77	2,296.6	63.3	-27.2	-24.7	0.00	0.00	0.00
2,400.0	6.11	336.77	2,396.0	73.1	-31.4	-28.5	0.00	0.00	0.00
2,500.0	6.11	336.77	2,495.5	82.8	-35.6	-32.3	0.00	0.00	0.00
2,600.0	6.11	336.77	2,594.9	92.6	-39.8	-36.1	0.00	0.00	0.00
2,700.0	6.11	336.77	2,694.3	102.4	-44.0	-39.9	0.00	0.00	0.00
2,800.0	6.11	336.77	2,793.8	112.2	-48.1	-43.7	0.00	0.00	0.00
2,900.0	6.11	336.77	2,893.2	121.9	-52.3	-47.6	0.00	0.00	0.00
3,000.0	6.11	336.77	2,992.6	131.7	-56.5	-51.4	0.00	0.00	0.00
3,100.0	6.11	336.77	3,092.1	141.5	-60.7	-55.2	0.00	0.00	0.00
3,200.0	6.11	336.77	3,191.5	151.3	-64.9	-59.0	0.00	0.00	0.00
3,300.0	6.11	336.77	3,290.9	161.0	-69.1	-62.8	0.00	0.00	0.00
3,400.0	6.11	336.77	3,390.4	170.8	-73.3	-66.6	0.00	0.00	0.00
3,500.0	6.11	336.77	3,489.8	180.6	-77.5	-70.4	0.00	0.00	0.00
3,600.0	6.11	336.77	3,589.2	190.3	-81.7	-74.2	0.00	0.00	0.00
3,700.0	6.11	336.77	3,688.7	200.1	-85.9	-78.1	0.00	0.00	0.00
3,800.0	6.11	336.77	3,788.1	209.9	-90.1	-81.9	0.00	0.00	0.00
3,900.0	6.11	336.77	3,887.5	219.7	-94.3	-85.7	0.00	0.00	0.00
4,000.0	6.11	336.77	3,987.0	229.4	-98.5	-89.5	0.00	0.00	0.00
4,100.0	6.11	336.77	4,086.4	239.2	-102.7	-93.3	0.00	0.00	0.00
4,200.0	6.11	336.77	4,185.8	249.0	-106.9	-97.1	0.00	0.00	0.00
4,300.0	6.11	336.77	4,285.3	258.8	-111.1	-100.9	0.00	0.00	0.00
4,400.0	6.11	336.77	4,384.7	268.5	-115.3	-104.7	0.00	0.00	0.00
4,500.0	6.11	336.77	4,484.1	278.3	-119.5	-108.5	0.00	0.00	0.00
4,600.0	6.11	336.77	4,583.6	288.1	-123.7	-112.4	0.00	0.00	0.00
4,700.0	6.11	336.77	4,683.0	297.9	-127.9	-116.2	0.00	0.00	0.00
4,712.4	6.11	336.77	4,695.3	299.1	-128.4	-116.6	0.00	0.00	0.00
4,800.0	4.35	336.77	4,782.6	306.4	-131.5	-119.5	2.00	-2.00	0.00

<b>Database:</b>	Landmark	<b>Local Co-ordinate Reference:</b>	Well SRC Wiedeman A-5-3NHZ
<b>Company:</b>	Synergy Resources	<b>TVD Reference:</b>	WELL @ 4796.0ft (RKB - 13')
<b>Project:</b>	Sec.5-T5N-R66W	<b>MD Reference:</b>	WELL @ 4796.0ft (RKB - 13')
<b>Site:</b>	SRC Wiedeman Pad Sec.5-T5N-R66W	<b>North Reference:</b>	True
<b>Well:</b>	SRC Wiedeman A-5-3NHZ	<b>Survey Calculation Method:</b>	Minimum Curvature
<b>Wellbore:</b>	Wellbore #1		
<b>Design:</b>	Plan #1 (6-24-14)		

Planned Survey									
Measured Depth (ft)	Inclination (°)	Azimuth (°)	Vertical Depth (ft)	+N/-S (ft)	+E/-W (ft)	Vertical Section (ft)	Dogleg Rate (°/100ft)	Build Rate (°/100ft)	Turn Rate (°/100ft)
4,900.0	2.35	336.77	4,882.4	311.8	-133.8	-121.6	2.00	-2.00	0.00
5,000.0	0.35	336.77	4,982.4	314.0	-134.8	-122.4	2.00	-2.00	0.00
5,017.6	0.00	0.00	5,000.0	314.0	-134.8	-122.5	2.00	-2.00	0.00
5,100.0	0.00	0.00	5,082.4	314.0	-134.8	-122.5	0.00	0.00	0.00
5,200.0	0.00	0.00	5,182.4	314.0	-134.8	-122.5	0.00	0.00	0.00
5,300.0	0.00	0.00	5,282.4	314.0	-134.8	-122.5	0.00	0.00	0.00
5,400.0	0.00	0.00	5,382.4	314.0	-134.8	-122.5	0.00	0.00	0.00
5,500.0	0.00	0.00	5,482.4	314.0	-134.8	-122.5	0.00	0.00	0.00
5,600.0	0.00	0.00	5,582.4	314.0	-134.8	-122.5	0.00	0.00	0.00
5,700.0	0.00	0.00	5,682.4	314.0	-134.8	-122.5	0.00	0.00	0.00
5,800.0	0.00	0.00	5,782.4	314.0	-134.8	-122.5	0.00	0.00	0.00
5,900.0	0.00	0.00	5,882.4	314.0	-134.8	-122.5	0.00	0.00	0.00
6,000.0	0.00	0.00	5,982.4	314.0	-134.8	-122.5	0.00	0.00	0.00
6,100.0	0.00	0.00	6,082.4	314.0	-134.8	-122.5	0.00	0.00	0.00
6,200.0	0.00	0.00	6,182.4	314.0	-134.8	-122.5	0.00	0.00	0.00
6,300.0	0.00	0.00	6,282.4	314.0	-134.8	-122.5	0.00	0.00	0.00
6,354.4	0.00	0.00	6,336.8	314.0	-134.8	-122.5	0.00	0.00	0.00
<b>KOP #2</b>									
6,400.0	3.64	89.58	6,382.3	314.0	-133.4	-121.0	7.99	7.99	0.00
6,500.0	11.64	89.58	6,481.4	314.1	-120.1	-107.7	8.00	8.00	0.00
6,600.0	19.64	89.58	6,577.6	314.3	-93.1	-80.8	8.00	8.00	0.00
6,700.0	27.64	89.58	6,669.1	314.6	-53.0	-40.8	8.00	8.00	0.00
6,800.0	35.64	89.58	6,754.2	315.0	-0.6	11.6	8.00	8.00	0.00
6,900.0	43.64	89.58	6,831.1	315.5	63.1	75.4	8.00	8.00	0.00
7,000.0	51.64	89.58	6,898.4	316.0	137.0	149.2	8.00	8.00	0.00
7,100.0	59.64	89.58	6,954.8	316.6	219.4	231.6	8.00	8.00	0.00
7,200.0	67.64	89.58	6,999.2	317.3	309.0	321.1	8.00	8.00	0.00
7,300.0	75.64	89.58	7,030.6	318.0	403.8	415.9	8.00	8.00	0.00
7,400.0	83.64	89.58	7,048.6	318.7	502.1	514.1	8.00	8.00	0.00
7,479.4	90.00	89.58	7,053.0	319.3	581.3	593.3	8.00	8.00	0.00
<b>End of Build - 7"</b>									
7,500.0	90.00	89.58	7,053.0	319.4	601.9	613.9	0.02	0.02	0.00
7,600.0	90.00	89.58	7,053.0	320.2	701.9	713.9	0.00	0.00	0.00
7,700.0	90.00	89.58	7,053.0	320.9	801.9	813.8	0.00	0.00	0.00
7,800.0	90.00	89.58	7,053.0	321.6	901.9	913.8	0.00	0.00	0.00
7,900.0	90.00	89.58	7,053.0	322.4	1,001.9	1,013.7	0.00	0.00	0.00
8,000.0	90.00	89.58	7,053.0	323.1	1,101.9	1,113.7	0.00	0.00	0.00
8,100.0	90.00	89.58	7,053.0	323.8	1,201.9	1,213.6	0.00	0.00	0.00
8,200.0	90.00	89.58	7,053.0	324.6	1,301.9	1,313.6	0.00	0.00	0.00
8,300.0	90.00	89.58	7,053.0	325.3	1,401.9	1,413.5	0.00	0.00	0.00
8,400.0	90.00	89.58	7,053.0	326.0	1,501.9	1,513.5	0.00	0.00	0.00
8,500.0	90.00	89.58	7,053.0	326.8	1,601.9	1,613.4	0.00	0.00	0.00
8,600.0	90.00	89.58	7,053.0	327.5	1,701.9	1,713.4	0.00	0.00	0.00
8,700.0	90.00	89.58	7,053.0	328.2	1,801.9	1,813.3	0.00	0.00	0.00
8,800.0	90.00	89.58	7,053.0	329.0	1,901.9	1,913.3	0.00	0.00	0.00
8,900.0	90.00	89.58	7,053.0	329.7	2,001.9	2,013.2	0.00	0.00	0.00
9,000.0	90.00	89.58	7,053.0	330.4	2,101.9	2,113.2	0.00	0.00	0.00
9,100.0	90.00	89.58	7,053.0	331.2	2,201.9	2,213.1	0.00	0.00	0.00
9,200.0	90.00	89.58	7,053.0	331.9	2,301.9	2,313.1	0.00	0.00	0.00
9,300.0	90.00	89.58	7,053.0	332.6	2,401.9	2,413.0	0.00	0.00	0.00
9,400.0	90.00	89.58	7,053.0	333.4	2,501.9	2,513.0	0.00	0.00	0.00
9,500.0	90.00	89.58	7,053.0	334.1	2,601.9	2,612.9	0.00	0.00	0.00
9,600.0	90.00	89.58	7,053.0	334.9	2,701.9	2,712.9	0.00	0.00	0.00
9,700.0	90.00	89.58	7,053.0	335.6	2,801.9	2,812.8	0.00	0.00	0.00

<b>Database:</b>	Landmark	<b>Local Co-ordinate Reference:</b>	Well SRC Wiedeman A-5-3NHZ
<b>Company:</b>	Synergy Resources	<b>TVD Reference:</b>	WELL @ 4796.0ft (RKB - 13')
<b>Project:</b>	Sec.5-T5N-R66W	<b>MD Reference:</b>	WELL @ 4796.0ft (RKB - 13')
<b>Site:</b>	SRC Wiedeman Pad Sec.5-T5N-R66W	<b>North Reference:</b>	True
<b>Well:</b>	SRC Wiedeman A-5-3NHZ	<b>Survey Calculation Method:</b>	Minimum Curvature
<b>Wellbore:</b>	Wellbore #1		
<b>Design:</b>	Plan #1 (6-24-14)		

Planned Survey									
Measured Depth (ft)	Inclination (°)	Azimuth (°)	Vertical Depth (ft)	+N/-S (ft)	+E/-W (ft)	Vertical Section (ft)	Dogleg Rate (°/100ft)	Build Rate (°/100ft)	Turn Rate (°/100ft)
9,800.0	90.00	89.58	7,053.0	336.3	2,901.9	2,912.8	0.00	0.00	0.00
9,900.0	90.00	89.58	7,053.0	337.1	3,001.9	3,012.7	0.00	0.00	0.00
10,000.0	90.00	89.58	7,053.0	337.8	3,101.9	3,112.7	0.00	0.00	0.00
10,100.0	90.00	89.58	7,053.0	338.5	3,201.9	3,212.6	0.00	0.00	0.00
10,200.0	90.00	89.58	7,053.0	339.3	3,301.9	3,312.6	0.00	0.00	0.00
10,300.0	90.00	89.58	7,053.0	340.0	3,401.9	3,412.5	0.00	0.00	0.00
10,400.0	90.00	89.58	7,053.0	340.7	3,501.9	3,512.5	0.00	0.00	0.00
10,500.0	90.00	89.58	7,053.0	341.5	3,601.8	3,612.4	0.00	0.00	0.00
10,600.0	90.00	89.58	7,053.0	342.2	3,701.8	3,712.4	0.00	0.00	0.00
10,700.0	90.00	89.58	7,053.0	342.9	3,801.8	3,812.3	0.00	0.00	0.00
10,800.0	90.00	89.58	7,053.0	343.7	3,901.8	3,912.3	0.00	0.00	0.00
10,900.0	90.00	89.58	7,053.0	344.4	4,001.8	4,012.2	0.00	0.00	0.00
11,000.0	90.00	89.58	7,053.0	345.1	4,101.8	4,112.2	0.00	0.00	0.00
11,100.0	90.00	89.58	7,053.0	345.9	4,201.8	4,212.1	0.00	0.00	0.00
11,200.0	90.00	89.58	7,053.0	346.6	4,301.8	4,312.1	0.00	0.00	0.00
11,300.0	90.00	89.58	7,053.0	347.3	4,401.8	4,412.0	0.00	0.00	0.00
11,400.0	90.00	89.58	7,053.0	348.1	4,501.8	4,512.0	0.00	0.00	0.00
11,500.0	90.00	89.58	7,053.0	348.8	4,601.8	4,611.9	0.00	0.00	0.00
11,600.0	90.00	89.58	7,053.0	349.6	4,701.8	4,711.9	0.00	0.00	0.00
11,700.0	90.00	89.58	7,053.0	350.3	4,801.8	4,811.8	0.00	0.00	0.00
11,800.0	90.00	89.58	7,053.0	351.0	4,901.8	4,911.8	0.00	0.00	0.00
11,900.0	90.00	89.58	7,053.0	351.8	5,001.8	5,011.7	0.00	0.00	0.00
12,000.0	90.00	89.58	7,053.0	352.5	5,101.8	5,111.7	0.00	0.00	0.00
12,100.0	90.00	89.58	7,053.0	353.2	5,201.8	5,211.6	0.00	0.00	0.00
12,200.0	90.00	89.58	7,053.0	354.0	5,301.8	5,311.6	0.00	0.00	0.00
12,300.0	90.00	89.58	7,053.0	354.7	5,401.8	5,411.5	0.00	0.00	0.00
12,400.0	90.00	89.58	7,053.0	355.4	5,501.8	5,511.5	0.00	0.00	0.00
12,500.0	90.00	89.58	7,053.0	356.2	5,601.8	5,611.4	0.00	0.00	0.00
12,600.0	90.00	89.58	7,053.0	356.9	5,701.8	5,711.4	0.00	0.00	0.00
12,700.0	90.00	89.58	7,053.0	357.6	5,801.8	5,811.3	0.00	0.00	0.00
12,800.0	90.00	89.58	7,053.0	358.4	5,901.8	5,911.3	0.00	0.00	0.00
12,900.0	90.00	89.58	7,053.0	359.1	6,001.8	6,011.2	0.00	0.00	0.00
13,000.0	90.00	89.58	7,053.0	359.8	6,101.8	6,111.2	0.00	0.00	0.00
13,100.0	90.00	89.58	7,053.0	360.6	6,201.8	6,211.1	0.00	0.00	0.00
13,200.0	90.00	89.58	7,053.0	361.3	6,301.8	6,311.1	0.00	0.00	0.00
13,300.0	90.00	89.58	7,053.0	362.0	6,401.8	6,411.0	0.00	0.00	0.00
13,400.0	90.00	89.58	7,053.0	362.8	6,501.8	6,511.0	0.00	0.00	0.00
13,500.0	90.00	89.58	7,053.0	363.5	6,601.8	6,610.9	0.00	0.00	0.00
13,600.0	90.00	89.58	7,053.0	364.3	6,701.8	6,710.9	0.00	0.00	0.00
13,700.0	90.00	89.58	7,053.0	365.0	6,801.8	6,810.8	0.00	0.00	0.00
13,800.0	90.00	89.58	7,053.0	365.7	6,901.8	6,910.8	0.00	0.00	0.00
13,900.0	90.00	89.58	7,053.0	366.5	7,001.8	7,010.7	0.00	0.00	0.00
14,000.0	90.00	89.58	7,053.0	367.2	7,101.8	7,110.7	0.00	0.00	0.00
14,100.0	90.00	89.58	7,053.0	367.9	7,201.8	7,210.6	0.00	0.00	0.00
14,200.0	90.00	89.58	7,053.0	368.7	7,301.7	7,310.6	0.00	0.00	0.00
14,300.0	90.00	89.58	7,053.0	369.4	7,401.7	7,410.5	0.00	0.00	0.00
14,400.0	90.00	89.58	7,053.0	370.1	7,501.7	7,510.5	0.00	0.00	0.00
14,500.0	90.00	89.58	7,053.0	370.9	7,601.7	7,610.4	0.00	0.00	0.00
14,600.0	90.00	89.58	7,053.0	371.6	7,701.7	7,710.4	0.00	0.00	0.00
14,700.0	90.00	89.58	7,053.0	372.3	7,801.7	7,810.3	0.00	0.00	0.00
14,800.0	90.00	89.58	7,053.0	373.1	7,901.7	7,910.3	0.00	0.00	0.00
14,900.0	90.00	89.58	7,053.0	373.8	8,001.7	8,010.2	0.00	0.00	0.00
15,000.0	90.00	89.58	7,053.0	374.5	8,101.7	8,110.2	0.00	0.00	0.00
15,100.0	90.00	89.58	7,053.0	375.3	8,201.7	8,210.1	0.00	0.00	0.00

<b>Database:</b>	Landmark	<b>Local Co-ordinate Reference:</b>	Well SRC Wiedeman A-5-3NHZ
<b>Company:</b>	Synergy Resources	<b>TVD Reference:</b>	WELL @ 4796.0ft (RKB - 13')
<b>Project:</b>	Sec.5-T5N-R66W	<b>MD Reference:</b>	WELL @ 4796.0ft (RKB - 13')
<b>Site:</b>	SRC Wiedeman Pad Sec.5-T5N-R66W	<b>North Reference:</b>	True
<b>Well:</b>	SRC Wiedeman A-5-3NHZ	<b>Survey Calculation Method:</b>	Minimum Curvature
<b>Wellbore:</b>	Wellbore #1		
<b>Design:</b>	Plan #1 (6-24-14)		

Planned Survey										
Measured Depth (ft)	Inclination (°)	Azimuth (°)	Vertical Depth (ft)	+N/-S (ft)	+E/-W (ft)	Vertical Section (ft)	Dogleg Rate (°/100ft)	Build Rate (°/100ft)	Turn Rate (°/100ft)	
15,200.0	90.00	89.58	7,053.0	376.0	8,301.7	8,310.1	0.00	0.00	0.00	
15,300.0	90.00	89.58	7,053.0	376.7	8,401.7	8,410.0	0.00	0.00	0.00	
15,400.0	90.00	89.58	7,053.0	377.5	8,501.7	8,510.0	0.00	0.00	0.00	
15,500.0	90.00	89.58	7,053.0	378.2	8,601.7	8,609.9	0.00	0.00	0.00	
15,600.0	90.00	89.58	7,053.0	379.0	8,701.7	8,709.9	0.00	0.00	0.00	
15,700.0	90.00	89.58	7,053.0	379.7	8,801.7	8,809.8	0.00	0.00	0.00	
15,800.0	90.00	89.58	7,053.0	380.4	8,901.7	8,909.8	0.00	0.00	0.00	
15,900.0	90.00	89.58	7,053.0	381.2	9,001.7	9,009.7	0.00	0.00	0.00	
16,000.0	90.00	89.58	7,053.0	381.9	9,101.7	9,109.7	0.00	0.00	0.00	
16,100.0	90.00	89.58	7,053.0	382.6	9,201.7	9,209.6	0.00	0.00	0.00	
16,200.0	90.00	89.58	7,053.0	383.4	9,301.7	9,309.6	0.00	0.00	0.00	
16,300.0	90.00	89.58	7,053.0	384.1	9,401.7	9,409.5	0.00	0.00	0.00	
16,400.0	90.00	89.58	7,053.0	384.8	9,501.7	9,509.5	0.00	0.00	0.00	
16,500.0	90.00	89.58	7,053.0	385.6	9,601.7	9,609.4	0.00	0.00	0.00	
16,600.0	90.00	89.58	7,053.0	386.3	9,701.7	9,709.4	0.00	0.00	0.00	
16,700.0	90.00	89.58	7,053.0	387.0	9,801.7	9,809.3	0.00	0.00	0.00	
16,800.0	90.00	89.58	7,053.0	387.8	9,901.7	9,909.3	0.00	0.00	0.00	
16,856.8	90.00	89.58	7,053.0	388.2	9,958.5	9,966.1	0.00	0.00	0.00	
BHL 1091'FNL & 2149'FWL, Sec.3										

Targets										
Target Name	Dip Angle (°)	Dip Dir. (°)	TVD (ft)	+N/-S (ft)	+E/-W (ft)	Northing (ft)	Easting (ft)	Latitude	Longitude	
- hit/miss target										
- Shape										
BHL 1091'FNL & 2149'FWL, Sec.3	0.00	0.00	7,053.0	388.2	9,958.5	1,401,928.91	3,204,336.76	40.434375	-104.765942	
- plan hits target center										
- Point										
SHL 1408'FNL & 2438'FWL, Sec.3	0.00	0.00	1.0	0.0	0.0	1,401,462.34	3,194,382.02	40.433315	-104.801715	
- plan hits target center										
- Point										

Casing Points					
Measured Depth (ft)	Vertical Depth (ft)	Name	Casing Diameter (")	Hole Diameter (")	
7,479.4	7,053.0	7"	7	7-1/2	

Plan Annotations					
Measured Depth (ft)	Vertical Depth (ft)	+N/-S (ft)	+E/-W (ft)	Comment	
1,500.0	1,500.0	0.0	0.0	KOP #1	
6,354.4	6,336.8	314.0	-134.8	KOP #2	
7,479.4	7,053.0	319.3	581.3	End of Build	

## **Synergy Resources**

**Sec.5-T5N-R66W**

**SRC Wiedeman Pad Sec.5-T5N-R66W**

**SRC Wiedeman A-5-3NHZ**

**Wellbore #1**

**Plan #1 (6-24-14)**

## **Anticollision Report**

**25 June, 2014**



<b>Company:</b>	Synergy Resources	<b>Local Co-ordinate Reference:</b>	Well SRC Wiedeman A-5-3NHZ
<b>Project:</b>	Sec.5-T5N-R66W	<b>TVD Reference:</b>	WELL @ 4796.0ft (RKB - 13')
<b>Reference Site:</b>	SRC Wiedeman Pad Sec.5-T5N-R66W	<b>MD Reference:</b>	WELL @ 4796.0ft (RKB - 13')
<b>Site Error:</b>	0.0ft	<b>North Reference:</b>	True
<b>Reference Well:</b>	SRC Wiedeman A-5-3NHZ	<b>Survey Calculation Method:</b>	Minimum Curvature
<b>Well Error:</b>	0.0ft	<b>Output errors are at</b>	2.00 sigma
<b>Reference Wellbore</b>	Wellbore #1	<b>Database:</b>	Landmark
<b>Reference Design:</b>	Plan #1 (6-24-14)	<b>Offset TVD Reference:</b>	Offset Datum

<b>Reference</b>	Plan #1 (6-24-14)		
<b>Filter type:</b>	NO GLOBAL FILTER: Using user defined selection & filtering criteria		
<b>Interpolation Method:</b>	Stations	<b>Error Model:</b>	ISCWSA
<b>Depth Range:</b>	Unlimited	<b>Scan Method:</b>	Closest Approach 3D
<b>Results Limited by:</b>	Maximum center-center distance of 1,000.0ft	<b>Error Surface:</b>	Elliptical Conic
<b>Warning Levels Evaluated at:</b>	2.00 Sigma		

<b>Survey Tool Program</b>	<b>Date</b> 6/25/2014			
<b>From (ft)</b>	<b>To (ft)</b>	<b>Survey (Wellbore)</b>	<b>Tool Name</b>	<b>Description</b>
0.0	16,856.8	Plan #1 (6-24-14) (Wellbore #1)	MWD	MWD - Standard

Summary						
Site Name	Reference Measured Depth (ft)	Offset Measured Depth (ft)	Distance Between Centres (ft)	Distance Between Ellipses (ft)	Separation Factor	Warning
Offset Well - Wellbore - Design						
Existing Wells - Sec.4-T5N-R66W						
Greeley Tech Center 41-5 (Exist) - Wellbore #1 - Wellbor	8,845.4	2,257.0	497.1	395.0	4.872	CC, ES
Greeley Tech Center 41-5 (Exist) - Wellbore #1 - Wellbor	8,900.0	2,257.0	500.0	396.6	4.832	SF
Kelly 2-3 (P&A) - Wellbore #1 - Wellbore #1	16,655.7	2,257.0	299.8	-19.6	0.939	Level 1, CC, ES, SF
Northridge Pad Sec.4-T5N-R66W						
Northridge 11-4D (Exist.) - Wellbore #1 - Wellbore #1	10,037.1	7,521.5	373.1	241.8	2.842	CC, ES, SF
Northridge 21-4D (Exist.) - Wellbore #1 - Wellbore #1	11,361.7	7,213.9	398.5	251.6	2.713	CC, ES
Northridge 21-4D (Exist.) - Wellbore #1 - Wellbore #1	11,400.0	7,212.6	400.3	252.4	2.707	SF
SRC Wiedeman Pad Sec.5-T5N-R66W						
SRC Wiedeman 21-5-3CHZ - Wellbore #1 - Plan #1 (6-2	1,000.0	1,000.0	15.0	10.7	3.513	CC
SRC Wiedeman 21-5-3CHZ - Wellbore #1 - Plan #1 (6-2	16,856.8	17,013.8	277.7	-171.9	0.618	Level 1, ES, SF
SRC Wiedeman 21-5-3NHZ - Wellbore #1 - Plan #1 (6-2	500.0	500.0	30.0	28.0	14.845	CC
SRC Wiedeman 21-5-3NHZ - Wellbore #1 - Plan #1 (6-2	16,856.8	16,844.3	470.1	-88.8	0.841	Level 1, ES, SF
SRC Wiedeman A-5-3CHZ - Wellbore #1 - Plan #1 (6-24	1,500.0	1,500.0	15.0	8.5	2.301	CC
SRC Wiedeman A-5-3CHZ - Wellbore #1 - Plan #1 (6-24	16,831.5	17,017.1	277.9	-174.4	0.614	Level 1, ES, SF

<b>Offset Design</b> Existing Wells - Sec.4-T5N-R66W - Greeley Tech Center 41-5 (Exist) - Wellbore #1 - Wellbore #1													<b>Offset Site Error:</b> 0.0ft
Survey Program: 7811-UNKNOWN													<b>Offset Well Error:</b> 0.0ft
Reference		Offset		Semi Major Axis			Distance						
Measured Depth (ft)	Vertical Depth (ft)	Measured Depth (ft)	Vertical Depth (ft)	Reference (ft)	Offset (ft)	Highside Toolface (°)	Offset Wellbore Centre +N/-S (ft)	+E/-W (ft)	Between Centres (ft)	Between Ellipses (ft)	Minimum Separation (ft)	Separation Factor	Warning
8,000.0	7,053.0	2,257.0	2,257.0	34.9	45.1	-90.00	826.3	1,943.6	980.7	900.7	79.94	12.268	
8,100.0	7,053.0	2,257.0	2,257.0	37.4	45.1	-90.00	826.3	1,943.6	895.9	813.5	82.44	10.867	
8,200.0	7,053.0	2,257.0	2,257.0	40.0	45.1	-90.00	826.3	1,943.6	814.6	729.6	84.99	9.585	
8,300.0	7,053.0	2,257.0	2,257.0	42.5	45.1	-90.00	826.3	1,943.6	737.9	650.3	87.57	8.426	
8,400.0	7,053.0	2,257.0	2,257.0	45.1	45.1	-90.00	826.3	1,943.6	667.4	577.2	90.18	7.401	
8,500.0	7,053.0	2,257.0	2,257.0	47.8	45.1	-90.00	826.3	1,943.6	605.3	512.5	92.81	6.522	
8,600.0	7,053.0	2,257.0	2,257.0	50.4	45.1	-90.00	826.3	1,943.6	554.3	458.9	95.46	5.807	
8,700.0	7,053.0	2,257.0	2,257.0	53.1	45.1	-90.00	826.3	1,943.6	517.9	419.8	98.12	5.278	
8,800.0	7,053.0	2,257.0	2,257.0	55.7	45.1	-90.00	826.3	1,943.6	499.1	398.3	100.80	4.952	
8,845.4	7,053.0	2,257.0	2,257.0	57.0	45.1	-90.00	826.3	1,943.6	497.1	395.0	102.02	4.872	CC, ES
8,900.0	7,053.0	2,257.0	2,257.0	58.4	45.1	-90.00	826.3	1,943.6	500.0	396.6	103.49	4.832	SF
9,000.0	7,053.0	2,257.0	2,257.0	61.1	45.1	-90.00	826.3	1,943.6	520.5	414.4	106.19	4.902	

CC - Min centre to center distance or covergent point, SF - min separation factor, ES - min ellipse separation

<b>Company:</b>	Synergy Resources	<b>Local Co-ordinate Reference:</b>	Well SRC Wiedeman A-5-3NHZ
<b>Project:</b>	Sec.5-T5N-R66W	<b>TVD Reference:</b>	WELL @ 4796.0ft (RKB - 13')
<b>Reference Site:</b>	SRC Wiedeman Pad Sec.5-T5N-R66W	<b>MD Reference:</b>	WELL @ 4796.0ft (RKB - 13')
<b>Site Error:</b>	0.0ft	<b>North Reference:</b>	True
<b>Reference Well:</b>	SRC Wiedeman A-5-3NHZ	<b>Survey Calculation Method:</b>	Minimum Curvature
<b>Well Error:</b>	0.0ft	<b>Output errors are at</b>	2.00 sigma
<b>Reference Wellbore</b>	Wellbore #1	<b>Database:</b>	Landmark
<b>Reference Design:</b>	Plan #1 (6-24-14)	<b>Offset TVD Reference:</b>	Offset Datum

<b>Offset Design</b>													<b>Offset Site Error:</b>	0.0 ft
Existing Wells - Sec.4-T5N-R66W - Greeley Tech Center 41-5 (Exist) - Wellbore #1 - Wellbore #1													<b>Offset Well Error:</b>	0.0 ft
Survey Program: 7811-UNKNOWN														
Reference		Offset		Semi Major Axis			Distance							
Measured Depth (ft)	Vertical Depth (ft)	Measured Depth (ft)	Vertical Depth (ft)	Reference (ft)	Offset (ft)	Highside Toolface (°)	Offset Wellbore Centre +N/-S (ft)	+E/-W (ft)	Between Centres (ft)	Between Ellipses (ft)	Minimum Separation (ft)	Separation Factor	Warning	
9,100.0	7,053.0	2,257.0	2,257.0	63.8	45.1	-90.00	826.3	1,943.6	558.5	449.6	108.90	5.128		
9,200.0	7,053.0	2,257.0	2,257.0	66.6	45.1	-90.00	826.3	1,943.6	610.6	499.0	111.62	5.470		
9,300.0	7,053.0	2,257.0	2,257.0	69.3	45.1	-90.00	826.3	1,943.6	673.6	559.3	114.35	5.891		
9,400.0	7,053.0	2,257.0	2,257.0	72.0	45.1	-90.00	826.3	1,943.6	744.8	627.7	117.08	6.361		
9,500.0	7,053.0	2,257.0	2,257.0	74.7	45.1	-90.00	826.3	1,943.6	821.9	702.1	119.82	6.860		
9,600.0	7,053.0	2,257.0	2,257.0	77.5	45.1	-90.00	826.3	1,943.6	903.6	781.1	122.56	7.373		
9,700.0	7,053.0	2,257.0	2,257.0	80.2	45.1	-90.00	826.3	1,943.6	988.7	863.3	125.31	7.890		

<b>Company:</b>	Synergy Resources	<b>Local Co-ordinate Reference:</b>	Well SRC Wiedeman A-5-3NHZ
<b>Project:</b>	Sec.5-T5N-R66W	<b>TVD Reference:</b>	WELL @ 4796.0ft (RKB - 13')
<b>Reference Site:</b>	SRC Wiedeman Pad Sec.5-T5N-R66W	<b>MD Reference:</b>	WELL @ 4796.0ft (RKB - 13')
<b>Site Error:</b>	0.0ft	<b>North Reference:</b>	True
<b>Reference Well:</b>	SRC Wiedeman A-5-3NHZ	<b>Survey Calculation Method:</b>	Minimum Curvature
<b>Well Error:</b>	0.0ft	<b>Output errors are at</b>	2.00 sigma
<b>Reference Wellbore</b>	Wellbore #1	<b>Database:</b>	Landmark
<b>Reference Design:</b>	Plan #1 (6-24-14)	<b>Offset TVD Reference:</b>	Offset Datum

Offset Design Existing Wells - Sec.4-T5N-R66W - Kelly 2-3 (P&A) - Wellbore #1 - Wellbore #1													Offset Site Error:	0.0 ft
Survey Program: 7403-UNKNOWN													Offset Well Error:	0.0 ft
Reference		Offset		Semi Major Axis			Distance							Warning
Measured Depth (ft)	Vertical Depth (ft)	Measured Depth (ft)	Vertical Depth (ft)	Reference (ft)	Offset (ft)	Highside Toolface (°)	Offset Wellbore Centre +N/-S (ft)	+E/-W (ft)	Between Centres (ft)	Between Ellipses (ft)	Minimum Separation (ft)	Separation Factor		
15,800.0	7,053.0	2,257.0	2,257.0	250.3	45.1	-90.00	686.5	9,755.2	906.7	611.3	295.41	3.069		
15,900.0	7,053.0	2,257.0	2,257.0	253.1	45.1	-90.00	686.5	9,755.2	813.0	514.8	298.21	2.726		
16,000.0	7,053.0	2,257.0	2,257.0	255.9	45.1	-90.00	686.5	9,755.2	721.0	420.0	301.01	2.395		
16,100.0	7,053.0	2,257.0	2,257.0	258.7	45.1	-90.00	686.5	9,755.2	631.4	327.6	303.81	2.078		
16,200.0	7,053.0	2,257.0	2,257.0	261.5	45.1	-90.00	686.5	9,755.2	545.4	238.8	306.61	1.779		
16,300.0	7,053.0	2,257.0	2,257.0	264.3	45.1	-90.00	686.5	9,755.2	465.2	155.7	309.41	1.503		
16,400.0	7,053.0	2,257.0	2,257.0	267.1	45.1	-90.00	686.5	9,755.2	394.0	81.8	312.21	1.262	Level 3	
16,500.0	7,053.0	2,257.0	2,257.0	269.9	45.1	-90.00	686.5	9,755.2	337.8	22.8	315.02	1.072	Level 2	
16,600.0	7,053.0	2,257.0	2,257.0	272.7	45.1	-90.00	686.5	9,755.2	304.9	-12.9	317.82	0.959	Level 1	
16,655.7	7,053.0	2,257.0	2,257.0	274.3	45.1	-90.00	686.5	9,755.2	299.8	-19.6	319.38	0.939	Level 1, CC, ES, SF	
16,700.0	7,053.0	2,257.0	2,257.0	275.5	45.1	-90.00	686.5	9,755.2	303.0	-17.6	320.62	0.945	Level 1	
16,800.0	7,053.0	2,257.0	2,257.0	278.3	45.1	-90.00	686.5	9,755.2	332.7	9.3	323.42	1.029	Level 2	
16,856.8	7,053.0	2,257.0	2,257.0	279.9	45.1	-90.00	686.5	9,755.2	361.0	36.0	325.01	1.111	Level 2	

<b>Company:</b>	Synergy Resources	<b>Local Co-ordinate Reference:</b>	Well SRC Wiedeman A-5-3NHZ
<b>Project:</b>	Sec.5-T5N-R66W	<b>TVD Reference:</b>	WELL @ 4796.0ft (RKB - 13')
<b>Reference Site:</b>	SRC Wiedeman Pad Sec.5-T5N-R66W	<b>MD Reference:</b>	WELL @ 4796.0ft (RKB - 13')
<b>Site Error:</b>	0.0ft	<b>North Reference:</b>	True
<b>Reference Well:</b>	SRC Wiedeman A-5-3NHZ	<b>Survey Calculation Method:</b>	Minimum Curvature
<b>Well Error:</b>	0.0ft	<b>Output errors are at</b>	2.00 sigma
<b>Reference Wellbore</b>	Wellbore #1	<b>Database:</b>	Landmark
<b>Reference Design:</b>	Plan #1 (6-24-14)	<b>Offset TVD Reference:</b>	Offset Datum

<b>Offset Design</b> Northridge Pad Sec.4-T5N-R66W - Northridge 11-4D (Exist.) - Wellbore #1 - Wellbore #1												<b>Offset Site Error:</b>	0.0 ft
Survey Program: 147-MWD												<b>Offset Well Error:</b>	0.0 ft
Reference		Offset		Semi Major Axis			Distance						
Measured Depth (ft)	Vertical Depth (ft)	Measured Depth (ft)	Vertical Depth (ft)	Reference (ft)	Offset (ft)	Highside Toolface (°)	Offset Wellbore Centre +N/-S (ft)	+E/-W (ft)	Between Centres (ft)	Between Ellipses (ft)	Minimum Separation (ft)	Separation Factor	Warning
9,200.0	7,053.0	7,533.5	7,014.1	66.6	49.2	-90.64	711.4	3,136.0	916.4	808.1	108.26	8.465	
9,300.0	7,053.0	7,532.0	7,012.6	69.3	49.2	-90.40	711.3	3,136.1	826.1	715.1	111.00	7.442	
9,400.0	7,053.0	7,530.4	7,011.1	72.0	49.2	-90.17	711.3	3,136.1	738.3	624.5	113.75	6.490	
9,500.0	7,053.0	7,529.0	7,009.6	74.7	49.2	-89.94	711.3	3,136.1	653.9	537.4	116.49	5.613	
9,600.0	7,053.0	7,527.5	7,008.1	77.5	49.2	-89.71	711.2	3,136.1	574.7	455.4	119.25	4.819	
9,700.0	7,053.0	7,526.1	7,006.7	80.2	49.2	-89.49	711.2	3,136.1	502.8	380.8	122.00	4.121	
9,800.0	7,053.0	7,524.7	7,005.3	83.0	49.2	-89.28	711.2	3,136.2	442.1	317.3	124.76	3.543	
9,900.0	7,053.0	7,523.3	7,003.9	85.7	49.2	-89.07	711.1	3,136.2	397.5	270.0	127.52	3.117	
10,000.0	7,053.0	7,522.0	7,002.6	88.5	49.2	-88.87	711.1	3,136.2	375.0	244.7	130.28	2.878	
10,037.1	7,053.0	7,521.5	7,002.1	89.5	49.2	-88.79	711.1	3,136.2	373.1	241.8	131.30	2.842 CC, ES, SF	
10,100.0	7,053.0	7,520.7	7,001.3	91.2	49.2	-88.66	711.1	3,136.2	378.4	245.4	133.04	2.844	
10,200.0	7,053.0	7,519.4	7,000.0	94.0	49.2	-88.47	711.1	3,136.2	407.1	271.3	135.80	2.998	
10,300.0	7,053.0	7,518.1	6,998.8	96.8	49.2	-88.27	711.0	3,136.2	456.5	317.9	138.56	3.294	
10,400.0	7,053.0	7,516.9	6,997.5	99.5	49.2	-88.08	711.0	3,136.3	520.5	379.2	141.33	3.683	
10,500.0	7,053.0	7,515.7	6,996.3	102.3	49.2	-87.90	711.0	3,136.3	594.6	450.5	144.09	4.126	
10,600.0	7,053.0	7,514.5	6,995.1	105.1	49.2	-87.72	711.0	3,136.3	675.3	528.5	146.85	4.599	
10,700.0	7,053.0	7,513.3	6,994.0	107.9	49.2	-87.54	710.9	3,136.3	760.7	611.1	149.62	5.084	
10,800.0	7,053.0	7,512.2	6,992.8	110.6	49.2	-87.36	710.9	3,136.3	849.2	696.9	152.38	5.573	
10,900.0	7,053.0	7,511.1	6,991.7	113.4	49.2	-87.19	710.9	3,136.3	940.1	784.9	155.14	6.059	

<b>Company:</b>	Synergy Resources	<b>Local Co-ordinate Reference:</b>	Well SRC Wiedeman A-5-3NHZ
<b>Project:</b>	Sec.5-T5N-R66W	<b>TVD Reference:</b>	WELL @ 4796.0ft (RKB - 13')
<b>Reference Site:</b>	SRC Wiedeman Pad Sec.5-T5N-R66W	<b>MD Reference:</b>	WELL @ 4796.0ft (RKB - 13')
<b>Site Error:</b>	0.0ft	<b>North Reference:</b>	True
<b>Reference Well:</b>	SRC Wiedeman A-5-3NHZ	<b>Survey Calculation Method:</b>	Minimum Curvature
<b>Well Error:</b>	0.0ft	<b>Output errors are at</b>	2.00 sigma
<b>Reference Wellbore</b>	Wellbore #1	<b>Database:</b>	Landmark
<b>Reference Design:</b>	Plan #1 (6-24-14)	<b>Offset TVD Reference:</b>	Offset Datum

<b>Offset Design</b> Northridge Pad Sec.4-T5N-R66W - Northridge 21-4D (Exist.) - Wellbore #1 - Wellbore #1												<b>Offset Site Error:</b>	0.0 ft
Survey Program: 150-MWD												<b>Offset Well Error:</b>	0.0 ft
Reference		Offset		Semi Major Axis			Distance						Warning
Measured Depth (ft)	Vertical Depth (ft)	Measured Depth (ft)	Vertical Depth (ft)	Reference (ft)	Offset (ft)	Highside Toolface (°)	Offset Wellbore Centre +N/-S (ft)	+E/-W (ft)	Between Centres (ft)	Between Ellipses (ft)	Minimum Separation (ft)	Separation Factor	
10,500.0	7,053.0	7,240.0	7,013.0	102.3	31.4	-90.43	747.1	4,459.8	949.0	826.1	122.92	7.720	
10,600.0	7,053.0	7,237.1	7,010.1	105.1	31.4	-90.01	746.9	4,459.8	859.3	733.6	125.72	6.835	
10,700.0	7,053.0	7,234.2	7,007.2	107.9	31.4	-89.59	746.8	4,459.9	772.1	643.6	128.52	6.008	
10,800.0	7,053.0	7,231.2	7,004.2	110.6	31.4	-89.17	746.6	4,460.0	688.5	557.2	131.31	5.243	
10,900.0	7,053.0	7,228.2	7,001.2	113.4	31.4	-88.74	746.4	4,460.1	609.7	475.6	134.09	4.547	
11,000.0	7,053.0	7,225.2	6,998.2	116.2	31.4	-88.30	746.2	4,460.2	538.0	401.2	136.87	3.931	
11,100.0	7,053.0	7,222.1	6,995.1	119.0	31.4	-87.86	746.1	4,460.3	476.7	337.0	139.64	3.413	
11,200.0	7,053.0	7,219.0	6,992.0	121.7	31.4	-87.41	745.9	4,460.4	430.0	287.6	142.40	3.020	
11,300.0	7,053.0	7,215.8	6,988.9	124.5	31.4	-86.96	745.7	4,460.5	403.2	258.1	145.15	2.778	
11,361.7	7,053.0	7,213.9	6,986.9	126.2	31.3	-86.68	745.6	4,460.6	398.5	251.6	146.85	2.713 CC, ES	
11,400.0	7,053.0	7,212.6	6,985.7	127.3	31.3	-86.50	745.5	4,460.6	400.3	252.4	147.90	2.707 SF	
11,500.0	7,053.0	7,209.4	6,982.5	130.1	31.3	-86.04	745.3	4,460.7	421.8	271.1	150.63	2.800	
11,600.0	7,053.0	7,206.2	6,979.2	132.9	31.3	-85.57	745.2	4,460.9	464.2	310.9	153.35	3.027	
11,700.0	7,053.0	7,205.0	6,978.1	135.7	31.3	-85.40	745.1	4,460.9	522.6	366.5	156.11	3.348	
11,800.0	7,053.0	7,199.9	6,973.0	138.4	31.3	-84.67	744.8	4,461.1	592.2	433.4	158.77	3.730	
11,900.0	7,053.0	7,196.8	6,969.9	141.2	31.3	-84.23	744.6	4,461.2	669.5	508.1	161.46	4.147	
12,000.0	7,053.0	7,193.7	6,966.8	144.0	31.3	-83.79	744.4	4,461.3	752.2	588.0	164.14	4.583	
12,100.0	7,053.0	7,190.7	6,963.8	146.8	31.3	-83.35	744.3	4,461.4	838.6	671.8	166.81	5.028	
12,200.0	7,053.0	7,187.6	6,960.7	149.6	31.3	-82.92	744.1	4,461.5	927.8	758.3	169.46	5.475	

<b>Company:</b>	Synergy Resources	<b>Local Co-ordinate Reference:</b>	Well SRC Wiedeman A-5-3NHZ
<b>Project:</b>	Sec.5-T5N-R66W	<b>TVD Reference:</b>	WELL @ 4796.0ft (RKB - 13')
<b>Reference Site:</b>	SRC Wiedeman Pad Sec.5-T5N-R66W	<b>MD Reference:</b>	WELL @ 4796.0ft (RKB - 13')
<b>Site Error:</b>	0.0ft	<b>North Reference:</b>	True
<b>Reference Well:</b>	SRC Wiedeman A-5-3NHZ	<b>Survey Calculation Method:</b>	Minimum Curvature
<b>Well Error:</b>	0.0ft	<b>Output errors are at</b>	2.00 sigma
<b>Reference Wellbore</b>	Wellbore #1	<b>Database:</b>	Landmark
<b>Reference Design:</b>	Plan #1 (6-24-14)	<b>Offset TVD Reference:</b>	Offset Datum

Offset Design SRC Wiedeman Pad Sec.5-T5N-R66W - SRC Wiedeman 21-5-3CHZ - Wellbore #1 - Plan #1 (6-24-14)													Offset Site Error:	0.0 ft
Survey Program: 0-MWD													Offset Well Error:	0.0 ft
Reference		Offset		Semi Major Axis			Distance							Warning
Measured Depth (ft)	Vertical Depth (ft)	Measured Depth (ft)	Vertical Depth (ft)	Reference (ft)	Offset (ft)	Highside Toolface (°)	Offset Wellbore Centre +N/-S (ft)	+E/-W (ft)	Between Centres (ft)	Between Ellipses (ft)	Minimum Separation (ft)	Separation Factor		
0.0	0.0	0.0	0.0	0.0	0.0	5.32	14.9	1.4	15.0	15.0	0.00	N/A		
100.0	100.0	100.0	100.0	0.1	0.1	5.32	14.9	1.4	15.0	14.8	0.22	66.743		
200.0	200.0	200.0	200.0	0.3	0.3	5.32	14.9	1.4	15.0	14.3	0.67	22.248		
300.0	300.0	300.0	300.0	0.6	0.6	5.32	14.9	1.4	15.0	13.9	1.12	13.349		
400.0	400.0	400.0	400.0	0.8	0.8	5.32	14.9	1.4	15.0	13.4	1.57	9.535		
500.0	500.0	500.0	500.0	1.0	1.0	5.32	14.9	1.4	15.0	13.0	2.02	7.416		
600.0	600.0	600.0	600.0	1.2	1.2	5.32	14.9	1.4	15.0	12.5	2.47	6.068		
700.0	700.0	700.0	700.0	1.5	1.5	5.32	14.9	1.4	15.0	12.1	2.92	5.134		
800.0	800.0	800.0	800.0	1.7	1.7	5.32	14.9	1.4	15.0	11.6	3.37	4.450		
900.0	900.0	900.0	900.0	1.9	1.9	5.32	14.9	1.4	15.0	11.2	3.82	3.926		
1,000.0	1,000.0	1,000.0	1,000.0	2.1	2.1	5.32	14.9	1.4	15.0	10.7	4.27	3.513 CC		
1,100.0	1,100.0	1,099.5	1,099.4	2.4	2.4	3.52	16.6	1.0	16.7	11.9	4.72	3.531		
1,200.0	1,200.0	1,198.7	1,198.5	2.6	2.6	-0.23	21.7	-0.1	21.7	16.5	5.17	4.201		
1,300.0	1,300.0	1,297.4	1,296.9	2.8	2.8	-3.66	30.0	-1.9	30.2	24.6	5.62	5.375		
1,400.0	1,400.0	1,396.7	1,395.6	3.0	3.0	-5.95	40.5	-4.2	40.9	34.8	6.08	6.731		
1,500.0	1,500.0	1,496.1	1,494.4	3.3	3.3	-7.30	51.0	-6.5	51.7	45.1	6.54	7.907		
1,600.0	1,600.0	1,595.7	1,593.4	3.5	3.6	15.43	61.5	-8.8	60.8	53.8	6.97	8.720		
1,700.0	1,699.8	1,695.5	1,692.7	3.7	3.8	15.85	72.0	-11.2	66.5	59.1	7.42	8.973		
1,805.3	1,804.7	1,800.8	1,797.3	3.9	4.1	17.11	83.1	-13.6	69.0	61.1	7.88	8.753		
1,900.0	1,898.9	1,895.5	1,891.4	4.2	4.4	18.63	93.1	-15.8	69.6	61.3	8.32	8.362		
2,000.0	1,998.3	1,995.4	1,990.8	4.4	4.6	20.21	103.7	-18.1	70.2	61.4	8.79	7.993		
2,100.0	2,097.8	2,095.4	2,090.2	4.7	4.9	21.75	114.3	-20.4	71.0	61.7	9.26	7.663		
2,200.0	2,197.2	2,195.4	2,189.6	4.9	5.2	23.26	124.8	-22.8	71.7	62.0	9.74	7.367		
2,300.0	2,296.6	2,295.4	2,289.0	5.2	5.5	24.74	135.4	-25.1	72.5	62.3	10.22	7.100		
2,400.0	2,396.0	2,395.4	2,388.4	5.4	5.8	26.19	146.0	-27.4	73.4	62.7	10.70	6.859		
2,500.0	2,495.5	2,495.3	2,487.8	5.7	6.0	27.60	156.5	-29.7	74.3	63.1	11.19	6.639		
2,600.0	2,594.9	2,595.3	2,587.2	6.0	6.3	28.97	167.1	-32.1	75.3	63.6	11.69	6.439		
2,700.0	2,694.3	2,695.3	2,686.6	6.2	6.6	30.31	177.6	-34.4	76.3	64.1	12.19	6.257		
2,800.0	2,793.8	2,795.3	2,786.0	6.5	6.9	31.62	188.2	-36.7	77.3	64.6	12.69	6.090		
2,900.0	2,893.2	2,895.3	2,885.4	6.8	7.2	32.89	198.8	-39.0	78.4	65.2	13.20	5.936		
3,000.0	2,992.6	2,995.2	2,984.8	7.1	7.5	34.12	209.3	-41.3	79.5	65.8	13.72	5.794		
3,100.0	3,092.1	3,095.2	3,084.1	7.4	7.8	35.33	219.9	-43.7	80.6	66.4	14.24	5.664		
3,200.0	3,191.5	3,195.2	3,183.5	7.6	8.1	36.49	230.4	-46.0	81.8	67.1	14.76	5.543		
3,300.0	3,290.9	3,295.2	3,282.9	7.9	8.4	37.62	241.0	-48.3	83.0	67.7	15.29	5.431		
3,400.0	3,390.4	3,395.2	3,382.3	8.2	8.7	38.72	251.6	-50.6	84.3	68.5	15.82	5.327		
3,500.0	3,489.8	3,495.1	3,481.7	8.5	9.0	39.79	262.1	-52.9	85.6	69.2	16.36	5.231		
3,600.0	3,589.2	3,595.1	3,581.1	8.8	9.2	40.83	272.7	-55.3	86.9	70.0	16.90	5.141		
3,700.0	3,688.7	3,695.1	3,680.5	9.1	9.5	41.83	283.3	-57.6	88.2	70.8	17.44	5.057		
3,800.0	3,788.1	3,795.1	3,779.9	9.3	9.8	42.80	293.8	-59.9	89.6	71.6	17.99	4.979		
3,900.0	3,887.5	3,895.1	3,879.3	9.6	10.1	43.75	304.4	-62.2	91.0	72.4	18.54	4.906		
4,000.0	3,987.0	3,995.0	3,978.7	9.9	10.4	44.67	314.9	-64.6	92.4	73.3	19.09	4.838		
4,100.0	4,086.4	4,095.0	4,078.1	10.2	10.7	45.55	325.5	-66.9	93.8	74.1	19.65	4.774		
4,200.0	4,185.8	4,195.0	4,177.5	10.5	11.0	46.42	336.1	-69.2	95.2	75.0	20.21	4.714		
4,300.0	4,285.3	4,295.0	4,276.9	10.8	11.3	47.25	346.6	-71.5	96.7	76.0	20.77	4.657		
4,400.0	4,384.7	4,395.0	4,376.3	11.1	11.6	48.06	357.2	-73.8	98.2	76.9	21.33	4.604		
4,500.0	4,484.1	4,494.9	4,475.6	11.4	11.9	48.85	367.7	-76.2	99.7	77.8	21.90	4.554		
4,600.0	4,583.6	4,594.9	4,575.0	11.7	12.2	49.61	378.3	-78.5	101.3	78.8	22.47	4.507		
4,700.0	4,683.0	4,694.9	4,674.4	11.9	12.5	50.35	388.9	-80.8	102.8	79.8	23.04	4.463		
4,712.4	4,695.3	4,707.2	4,686.7	12.0	12.5	50.44	390.2	-81.1	103.0	79.9	23.11	4.457		
4,800.0	4,782.6	4,794.9	4,773.8	12.2	12.8	50.53	399.4	-83.1	105.2	81.7	23.55	4.469		
4,900.0	4,882.4	4,894.7	4,873.1	12.4	13.1	49.35	410.0	-85.4	109.9	85.9	23.92	4.593		
5,000.0	4,982.4	4,994.3	4,972.1	12.6	13.4	47.02	420.5	-87.8	116.9	92.7	24.20	4.830		

CC - Min centre to center distance or convergent point, SF - min separation factor, ES - min ellipse separation

<b>Company:</b>	Synergy Resources	<b>Local Co-ordinate Reference:</b>	Well SRC Wiedeman A-5-3NHZ
<b>Project:</b>	Sec.5-T5N-R66W	<b>TVD Reference:</b>	WELL @ 4796.0ft (RKB - 13')
<b>Reference Site:</b>	SRC Wiedeman Pad Sec.5-T5N-R66W	<b>MD Reference:</b>	WELL @ 4796.0ft (RKB - 13')
<b>Site Error:</b>	0.0ft	<b>North Reference:</b>	True
<b>Reference Well:</b>	SRC Wiedeman A-5-3NHZ	<b>Survey Calculation Method:</b>	Minimum Curvature
<b>Well Error:</b>	0.0ft	<b>Output errors are at</b>	2.00 sigma
<b>Reference Wellbore</b>	Wellbore #1	<b>Database:</b>	Landmark
<b>Reference Design:</b>	Plan #1 (6-24-14)	<b>Offset TVD Reference:</b>	Offset Datum

Offset Design SRC Wiedeman Pad Sec.5-T5N-R66W - SRC Wiedeman 21-5-3CHZ - Wellbore #1 - Plan #1 (6-24-14)												Offset Site Error:	0.0 ft
Survey Program: 0-MWD												Offset Well Error:	0.0 ft
Reference		Offset		Semi Major Axis			Distance						
Measured Depth (ft)	Vertical Depth (ft)	Measured Depth (ft)	Vertical Depth (ft)	Reference (ft)	Offset (ft)	Highside Toolface (°)	Offset Wellbore Centre +N/-S (ft)	+E/-W (ft)	Between Centres (ft)	Between Ellipses (ft)	Minimum Separation (ft)	Separation Factor	Warning
5,017.6	5,000.0	5,011.9	4,989.6	12.6	13.4	23.29	422.4	-88.2	118.4	93.9	24.55	4.824	
5,100.0	5,082.4	5,093.8	5,071.0	12.7	13.7	20.92	431.0	-90.1	125.8	100.7	25.06	5.019	
5,200.0	5,182.4	5,193.2	5,169.8	12.9	14.0	18.40	441.5	-92.4	135.0	109.3	25.68	5.256	
5,300.0	5,282.4	5,292.6	5,268.6	13.1	14.3	16.21	452.0	-94.7	144.4	118.1	26.28	5.493	
5,400.0	5,382.4	5,392.0	5,367.5	13.3	14.6	14.28	462.5	-97.0	154.0	127.1	26.87	5.730	
5,500.0	5,482.4	5,491.4	5,466.3	13.5	14.8	12.59	473.0	-99.3	163.7	136.3	27.44	5.966	
5,600.0	5,582.4	5,590.8	5,565.1	13.7	15.1	11.08	483.5	-101.6	173.6	145.6	28.01	6.198	
5,700.0	5,682.4	5,690.2	5,663.9	13.9	15.4	9.74	494.0	-103.9	183.6	155.0	28.56	6.427	
5,800.0	5,782.4	5,789.7	5,762.8	14.1	15.7	8.53	504.5	-106.2	193.6	164.5	29.11	6.652	
5,900.0	5,882.4	5,889.1	5,861.6	14.3	16.0	7.44	515.0	-108.5	203.8	174.1	29.65	6.872	
6,000.0	5,982.4	5,993.9	5,965.9	14.5	16.3	6.50	525.1	-110.8	213.1	182.9	30.18	7.062	
6,100.0	6,082.4	6,101.3	6,073.1	14.7	16.5	5.93	531.7	-112.2	219.1	188.5	30.62	7.155	
6,200.0	6,182.4	6,209.2	6,181.0	14.9	16.7	5.70	534.4	-112.8	221.5	190.5	31.01	7.142	
6,300.0	6,282.4	6,310.6	6,282.4	15.1	16.9	5.70	534.5	-112.8	221.6	190.2	31.39	7.059	
6,354.4	6,336.8	6,365.0	6,336.8	15.2	17.0	5.70	534.5	-112.8	221.6	190.0	31.60	7.012	
6,400.0	6,382.3	6,410.6	6,382.3	15.3	17.0	-84.27	534.5	-112.8	221.4	192.0	29.37	7.539	
6,450.0	6,432.1	6,460.3	6,432.1	15.4	17.1	-85.56	534.5	-112.8	221.0	191.5	29.50	7.490	
6,500.0	6,481.4	6,509.6	6,481.4	15.5	17.2	-87.74	534.5	-112.8	220.5	190.9	29.59	7.451	
6,539.3	6,519.6	6,547.8	6,519.6	15.5	17.3	-90.00	534.5	-112.7	220.3	190.7	29.64	7.433	
6,550.0	6,529.9	6,558.3	6,530.0	15.5	17.3	-90.64	534.5	-112.4	220.3	190.7	29.65	7.431	
6,600.0	6,577.6	6,607.4	6,579.0	15.6	17.4	-93.66	534.5	-109.2	220.8	191.1	29.69	7.435	
6,650.0	6,624.0	6,657.4	6,628.5	15.6	17.4	-96.66	534.5	-102.4	221.9	192.1	29.75	7.458	
6,700.0	6,669.1	6,708.2	6,678.3	15.7	17.5	-99.62	534.6	-92.0	223.6	193.8	29.81	7.500	
6,750.0	6,712.5	6,760.0	6,728.1	15.7	17.6	-102.51	534.7	-77.8	226.0	196.1	29.88	7.561	
6,800.0	6,754.2	6,812.8	6,777.6	15.8	17.6	-105.31	534.8	-59.6	228.8	198.9	29.96	7.639	
6,850.0	6,793.7	6,866.5	6,826.6	15.8	17.7	-108.00	535.0	-37.5	232.2	202.2	30.04	7.732	
6,900.0	6,831.1	6,921.3	6,874.6	15.9	17.8	-110.55	535.2	-11.2	236.0	205.9	30.12	7.836	
6,950.0	6,866.1	6,977.1	6,921.4	16.0	17.8	-112.96	535.4	19.4	240.1	209.9	30.22	7.944	
7,000.0	6,898.4	7,034.1	6,966.4	16.3	17.9	-115.21	535.7	54.1	244.4	214.1	30.31	8.064	
7,050.0	6,928.1	7,092.1	7,009.3	16.7	18.0	-117.29	536.0	93.1	248.9	218.4	30.48	8.164	
7,100.0	6,954.8	7,151.1	7,049.7	17.1	18.1	-119.20	536.3	136.2	253.3	222.6	30.70	8.252	
7,150.0	6,978.6	7,211.2	7,086.9	17.7	18.3	-120.92	536.6	183.4	257.7	226.7	31.00	8.313	
7,200.0	6,999.2	7,272.4	7,120.6	18.3	18.6	-122.45	537.0	234.4	261.9	230.5	31.41	8.338	
7,250.0	7,016.6	7,334.5	7,150.3	19.0	19.1	-123.80	537.4	288.9	265.8	233.9	31.94	8.322	
7,300.0	7,030.6	7,397.4	7,175.4	19.8	19.8	-124.96	537.8	346.6	269.4	236.7	32.62	8.258	
7,350.0	7,041.3	7,461.2	7,195.6	20.6	20.6	-125.93	538.2	407.1	272.5	239.0	33.46	8.142	
7,400.0	7,048.6	7,525.6	7,210.4	21.5	21.6	-126.71	538.7	469.8	275.0	240.6	34.48	7.977	
7,450.0	7,052.4	7,590.6	7,219.6	22.5	22.8	-127.30	539.2	534.1	277.0	241.4	35.66	7.768	
7,479.4	7,053.0	7,629.1	7,222.3	23.1	23.5	-127.55	539.4	572.5	277.9	241.5	36.44	7.627	
7,500.0	7,053.0	7,656.1	7,223.0	23.5	24.0	-127.66	539.6	599.4	278.2	241.1	37.13	7.494	
7,600.0	7,053.0	7,757.0	7,223.0	25.6	26.0	-127.67	540.4	700.3	278.2	237.8	40.42	6.882	
7,700.0	7,053.0	7,857.0	7,223.0	27.8	28.1	-127.67	541.1	800.3	278.2	234.3	43.91	6.335	
7,800.0	7,053.0	7,957.0	7,223.0	30.1	30.4	-127.67	541.8	900.3	278.2	230.6	47.58	5.847	
7,900.0	7,053.0	8,057.0	7,223.0	32.5	32.7	-127.67	542.6	1,000.3	278.2	226.8	51.38	5.414	
8,000.0	7,053.0	8,157.0	7,223.0	34.9	35.1	-127.67	543.3	1,100.3	278.2	222.9	55.29	5.031	
8,100.0	7,053.0	8,257.0	7,223.0	37.4	37.5	-127.67	544.0	1,200.3	278.2	218.9	59.29	4.692	
8,200.0	7,053.0	8,357.0	7,223.0	40.0	40.0	-127.67	544.7	1,300.3	278.2	214.8	63.36	4.390	
8,300.0	7,053.0	8,457.0	7,223.0	42.5	42.6	-127.67	545.5	1,400.3	278.2	210.7	67.49	4.122	
8,400.0	7,053.0	8,557.0	7,223.0	45.1	45.2	-127.67	546.2	1,500.3	278.2	206.5	71.67	3.881	
8,500.0	7,053.0	8,657.0	7,223.0	47.8	47.7	-127.67	546.9	1,600.3	278.2	202.3	75.89	3.666	
8,600.0	7,053.0	8,757.0	7,223.0	50.4	50.4	-127.67	547.7	1,700.3	278.2	198.0	80.14	3.471	
8,700.0	7,053.0	8,857.0	7,223.0	53.1	53.0	-127.68	548.4	1,800.3	278.1	193.7	84.41	3.295	

CC - Min centre to center distance or convergent point, SF - min separation factor, ES - min ellipse separation



<b>Company:</b>	Synergy Resources	<b>Local Co-ordinate Reference:</b>	Well SRC Wiedeman A-5-3NHZ
<b>Project:</b>	Sec.5-T5N-R66W	<b>TVD Reference:</b>	WELL @ 4796.0ft (RKB - 13')
<b>Reference Site:</b>	SRC Wiedeman Pad Sec.5-T5N-R66W	<b>MD Reference:</b>	WELL @ 4796.0ft (RKB - 13')
<b>Site Error:</b>	0.0ft	<b>North Reference:</b>	True
<b>Reference Well:</b>	SRC Wiedeman A-5-3NHZ	<b>Survey Calculation Method:</b>	Minimum Curvature
<b>Well Error:</b>	0.0ft	<b>Output errors are at</b>	2.00 sigma
<b>Reference Wellbore</b>	Wellbore #1	<b>Database:</b>	Landmark
<b>Reference Design:</b>	Plan #1 (6-24-14)	<b>Offset TVD Reference:</b>	Offset Datum

Offset Design SRC Wiedeman Pad Sec.5-T5N-R66W - SRC Wiedeman 21-5-3CHZ - Wellbore #1 - Plan #1 (6-24-14)													Offset Site Error:	0.0 ft
Survey Program: 0-MWD													Offset Well Error:	0.0 ft
Reference		Offset		Semi Major Axis			Distance							Warning
Measured Depth (ft)	Vertical Depth (ft)	Measured Depth (ft)	Vertical Depth (ft)	Reference (ft)	Offset (ft)	Highside Toolface (°)	Offset Wellbore Centre +N/-S (ft)	+E/-W (ft)	Between Centres (ft)	Between Ellipses (ft)	Minimum Separation (ft)	Separation Factor		
8,800.0	7,053.0	8,957.0	7,223.0	55.7	55.7	-127.68	549.1	1,900.3	278.1	189.4	88.72	3.135		
8,900.0	7,053.0	9,057.0	7,223.0	58.4	58.3	-127.68	549.8	2,000.3	278.1	185.1	93.04	2.989		
9,000.0	7,053.0	9,157.0	7,223.0	61.1	61.0	-127.68	550.6	2,100.3	278.1	180.7	97.38	2.856		
9,100.0	7,053.0	9,257.0	7,223.0	63.8	63.7	-127.68	551.3	2,200.3	278.1	176.4	101.74	2.734		
9,200.0	7,053.0	9,357.0	7,223.0	66.6	66.4	-127.68	552.0	2,300.3	278.1	172.0	106.11	2.621		
9,300.0	7,053.0	9,457.0	7,223.0	69.3	69.1	-127.68	552.7	2,400.3	278.1	167.6	110.50	2.517		
9,400.0	7,053.0	9,557.0	7,223.0	72.0	71.8	-127.68	553.5	2,500.3	278.1	163.2	114.89	2.421		
9,500.0	7,053.0	9,657.0	7,223.0	74.7	74.6	-127.68	554.2	2,600.3	278.1	158.8	119.30	2.331		
9,600.0	7,053.0	9,757.0	7,223.0	77.5	77.3	-127.68	554.9	2,700.3	278.1	154.4	123.71	2.248		
9,700.0	7,053.0	9,857.0	7,223.0	80.2	80.0	-127.68	555.7	2,800.3	278.1	150.0	128.13	2.170		
9,800.0	7,053.0	9,957.0	7,223.0	83.0	82.8	-127.69	556.4	2,900.3	278.1	145.5	132.56	2.098		
9,900.0	7,053.0	10,057.0	7,223.0	85.7	85.5	-127.69	557.1	3,000.3	278.1	141.1	137.00	2.030		
10,000.0	7,053.0	10,157.0	7,223.0	88.5	88.3	-127.69	557.8	3,100.3	278.1	136.6	141.44	1.966		
10,100.0	7,053.0	10,257.0	7,223.0	91.2	91.0	-127.69	558.6	3,200.3	278.1	132.2	145.88	1.906		
10,200.0	7,053.0	10,357.0	7,223.0	94.0	93.8	-127.69	559.3	3,300.3	278.1	127.7	150.33	1.850		
10,300.0	7,053.0	10,457.0	7,223.0	96.8	96.5	-127.69	560.0	3,400.3	278.1	123.3	154.78	1.796		
10,400.0	7,053.0	10,557.0	7,223.0	99.5	99.3	-127.69	560.7	3,500.2	278.0	118.8	159.24	1.746		
10,500.0	7,053.0	10,657.0	7,223.0	102.3	102.0	-127.69	561.5	3,600.2	278.0	114.3	163.70	1.698		
10,600.0	7,053.0	10,757.0	7,223.0	105.1	104.8	-127.69	562.2	3,700.2	278.0	109.9	168.17	1.653		
10,700.0	7,053.0	10,857.0	7,223.0	107.9	107.6	-127.69	562.9	3,800.2	278.0	105.4	172.63	1.611		
10,800.0	7,053.0	10,957.0	7,223.0	110.6	110.4	-127.70	563.7	3,900.2	278.0	100.9	177.10	1.570		
10,900.0	7,053.0	11,057.0	7,223.0	113.4	113.1	-127.70	564.4	4,000.2	278.0	96.4	181.58	1.531		
11,000.0	7,053.0	11,157.0	7,223.0	116.2	115.9	-127.70	565.1	4,100.2	278.0	92.0	186.05	1.494	Level 3	
11,100.0	7,053.0	11,257.0	7,223.0	119.0	118.7	-127.70	565.8	4,200.2	278.0	87.5	190.53	1.459	Level 3	
11,200.0	7,053.0	11,357.0	7,223.0	121.7	121.4	-127.70	566.6	4,300.2	278.0	83.0	195.01	1.426	Level 3	
11,300.0	7,053.0	11,457.0	7,223.0	124.5	124.2	-127.70	567.3	4,400.2	278.0	78.5	199.49	1.394	Level 3	
11,400.0	7,053.0	11,557.0	7,223.0	127.3	127.0	-127.70	568.0	4,500.2	278.0	74.0	203.97	1.363	Level 3	
11,500.0	7,053.0	11,657.0	7,223.0	130.1	129.8	-127.70	568.7	4,600.2	278.0	69.5	208.45	1.334	Level 3	
11,600.0	7,053.0	11,757.0	7,223.0	132.9	132.6	-127.70	569.5	4,700.2	278.0	65.0	212.94	1.305	Level 3	
11,700.0	7,053.0	11,857.0	7,223.0	135.7	135.4	-127.70	570.2	4,800.2	278.0	60.5	217.43	1.278	Level 3	
11,800.0	7,053.0	11,957.0	7,223.0	138.4	138.1	-127.70	570.9	4,900.2	278.0	56.0	221.92	1.253	Level 3	
11,900.0	7,053.0	12,057.0	7,223.0	141.2	140.9	-127.71	571.7	5,000.2	278.0	51.6	226.41	1.228	Level 2	
12,000.0	7,053.0	12,157.0	7,223.0	144.0	143.7	-127.71	572.4	5,100.2	278.0	47.1	230.90	1.204	Level 2	
12,100.0	7,053.0	12,257.0	7,223.0	146.8	146.5	-127.71	573.1	5,200.2	277.9	42.6	235.39	1.181	Level 2	
12,200.0	7,053.0	12,357.0	7,223.0	149.6	149.3	-127.71	573.8	5,300.2	277.9	38.1	239.88	1.159	Level 2	
12,300.0	7,053.0	12,457.0	7,223.0	152.4	152.1	-127.71	574.6	5,400.2	277.9	33.6	244.38	1.137	Level 2	
12,400.0	7,053.0	12,557.0	7,223.0	155.2	154.9	-127.71	575.3	5,500.2	277.9	29.1	248.87	1.117	Level 2	
12,500.0	7,053.0	12,657.0	7,223.0	158.0	157.6	-127.71	576.0	5,600.2	277.9	24.6	253.37	1.097	Level 2	
12,600.0	7,053.0	12,757.0	7,223.0	160.8	160.4	-127.71	576.8	5,700.2	277.9	20.1	257.86	1.078	Level 2	
12,700.0	7,053.0	12,857.0	7,223.0	163.6	163.2	-127.71	577.5	5,800.2	277.9	15.5	262.36	1.059	Level 2	
12,800.0	7,053.0	12,957.0	7,223.0	166.3	166.0	-127.71	578.2	5,900.2	277.9	11.0	266.86	1.041	Level 2	
12,900.0	7,053.0	13,057.0	7,223.0	169.1	168.8	-127.72	578.9	6,000.2	277.9	6.5	271.36	1.024	Level 2	
13,000.0	7,053.0	13,157.0	7,223.0	171.9	171.6	-127.72	579.7	6,100.2	277.9	2.0	275.86	1.007	Level 2	
13,100.0	7,053.0	13,257.0	7,223.0	174.7	174.4	-127.72	580.4	6,200.2	277.9	-2.5	280.36	0.991	Level 1	
13,200.0	7,053.0	13,357.0	7,223.0	177.5	177.2	-127.72	581.1	6,300.2	277.9	-7.0	284.86	0.976	Level 1	
13,300.0	7,053.0	13,457.0	7,223.0	180.3	180.0	-127.72	581.8	6,400.2	277.9	-11.5	289.36	0.960	Level 1	
13,400.0	7,053.0	13,557.0	7,223.0	183.1	182.8	-127.72	582.6	6,500.2	277.9	-16.0	293.86	0.946	Level 1	
13,500.0	7,053.0	13,657.0	7,223.0	185.9	185.6	-127.72	583.3	6,600.2	277.9	-20.5	298.36	0.931	Level 1	
13,600.0	7,053.0	13,757.0	7,223.0	188.7	188.4	-127.72	584.0	6,700.2	277.9	-25.0	302.87	0.917	Level 1	
13,700.0	7,053.0	13,857.0	7,223.0	191.5	191.2	-127.72	584.8	6,800.2	277.9	-29.5	307.37	0.904	Level 1	
13,800.0	7,053.0	13,957.0	7,223.0	194.3	193.9	-127.72	585.5	6,900.2	277.8	-34.0	311.87	0.891	Level 1	
13,900.0	7,053.0	14,057.0	7,223.0	197.1	196.7	-127.72	586.2	7,000.2	277.8	-38.5	316.37	0.878	Level 1	

CC - Min centre to center distance or convergent point, SF - min separation factor, ES - min ellipse separation



<b>Company:</b>	Synergy Resources	<b>Local Co-ordinate Reference:</b>	Well SRC Wiedeman A-5-3NHZ
<b>Project:</b>	Sec.5-T5N-R66W	<b>TVD Reference:</b>	WELL @ 4796.0ft (RKB - 13')
<b>Reference Site:</b>	SRC Wiedeman Pad Sec.5-T5N-R66W	<b>MD Reference:</b>	WELL @ 4796.0ft (RKB - 13')
<b>Site Error:</b>	0.0ft	<b>North Reference:</b>	True
<b>Reference Well:</b>	SRC Wiedeman A-5-3NHZ	<b>Survey Calculation Method:</b>	Minimum Curvature
<b>Well Error:</b>	0.0ft	<b>Output errors are at</b>	2.00 sigma
<b>Reference Wellbore</b>	Wellbore #1	<b>Database:</b>	Landmark
<b>Reference Design:</b>	Plan #1 (6-24-14)	<b>Offset TVD Reference:</b>	Offset Datum

Offset Design SRC Wiedeman Pad Sec.5-T5N-R66W - SRC Wiedeman 21-5-3CHZ - Wellbore #1 - Plan #1 (6-24-14)													Offset Site Error:	0.0 ft
Survey Program: 0-MWD													Offset Well Error:	0.0 ft
Reference		Offset		Semi Major Axis			Distance							Warning
Measured Depth (ft)	Vertical Depth (ft)	Measured Depth (ft)	Vertical Depth (ft)	Reference (ft)	Offset (ft)	Highside Toolface (°)	Offset Wellbore Centre +N/-S (ft)	+E/-W (ft)	Between Centres (ft)	Between Ellipses (ft)	Minimum Separation (ft)	Separation Factor		
14,000.0	7,053.0	14,157.0	7,223.0	199.9	199.5	-127.73	586.9	7,100.2	277.8	-43.0	320.88	0.866	Level 1	
14,100.0	7,053.0	14,257.0	7,223.0	202.7	202.3	-127.73	587.7	7,200.2	277.8	-47.6	325.38	0.854	Level 1	
14,200.0	7,053.0	14,357.0	7,223.0	205.5	205.1	-127.73	588.4	7,300.1	277.8	-52.1	329.89	0.842	Level 1	
14,300.0	7,053.0	14,457.0	7,223.0	208.3	207.9	-127.73	589.1	7,400.1	277.8	-56.6	334.39	0.831	Level 1	
14,400.0	7,053.0	14,557.0	7,223.0	211.1	210.7	-127.73	589.8	7,500.1	277.8	-61.1	338.90	0.820	Level 1	
14,500.0	7,053.0	14,657.0	7,223.0	213.9	213.5	-127.73	590.6	7,600.1	277.8	-65.6	343.40	0.809	Level 1	
14,600.0	7,053.0	14,757.0	7,223.0	216.7	216.3	-127.73	591.3	7,700.1	277.8	-70.1	347.91	0.798	Level 1	
14,700.0	7,053.0	14,857.0	7,223.0	219.5	219.1	-127.73	592.0	7,800.1	277.8	-74.6	352.42	0.788	Level 1	
14,800.0	7,053.0	14,957.0	7,223.0	222.3	221.9	-127.73	592.8	7,900.1	277.8	-79.1	356.92	0.778	Level 1	
14,900.0	7,053.0	15,057.0	7,223.0	225.1	224.7	-127.73	593.5	8,000.1	277.8	-83.6	361.43	0.769	Level 1	
15,000.0	7,053.0	15,157.0	7,223.0	227.9	227.5	-127.73	594.2	8,100.1	277.8	-88.2	365.94	0.759	Level 1	
15,100.0	7,053.0	15,257.0	7,223.0	230.7	230.3	-127.74	594.9	8,200.1	277.8	-92.7	370.44	0.750	Level 1	
15,200.0	7,053.0	15,357.0	7,223.0	233.5	233.1	-127.74	595.7	8,300.1	277.8	-97.2	374.95	0.741	Level 1	
15,300.0	7,053.0	15,457.0	7,223.0	236.3	235.9	-127.74	596.4	8,400.1	277.8	-101.7	379.46	0.732	Level 1	
15,400.0	7,053.0	15,557.0	7,223.0	239.1	238.7	-127.74	597.1	8,500.1	277.7	-106.2	383.96	0.723	Level 1	
15,500.0	7,053.0	15,657.0	7,223.0	241.9	241.5	-127.74	597.9	8,600.1	277.7	-110.7	388.47	0.715	Level 1	
15,600.0	7,053.0	15,757.0	7,223.0	244.7	244.3	-127.74	598.6	8,700.1	277.7	-115.2	392.98	0.707	Level 1	
15,700.0	7,053.0	15,857.0	7,223.0	247.5	247.1	-127.74	599.3	8,800.1	277.7	-119.8	397.49	0.699	Level 1	
15,800.0	7,053.0	15,957.0	7,223.0	250.3	249.9	-127.74	600.0	8,900.1	277.7	-124.3	402.00	0.691	Level 1	
15,900.0	7,053.0	16,057.0	7,223.0	253.1	252.7	-127.74	600.8	9,000.1	277.7	-128.8	406.50	0.683	Level 1	
16,000.0	7,053.0	16,157.0	7,223.0	255.9	255.5	-127.74	601.5	9,100.1	277.7	-133.3	411.01	0.676	Level 1	
16,100.0	7,053.0	16,257.0	7,223.0	258.7	258.3	-127.75	602.2	9,200.1	277.7	-137.8	415.52	0.668	Level 1	
16,200.0	7,053.0	16,357.0	7,223.0	261.5	261.1	-127.75	602.9	9,300.1	277.7	-142.3	420.03	0.661	Level 1	
16,300.0	7,053.0	16,457.0	7,223.0	264.3	263.9	-127.75	603.7	9,400.1	277.7	-146.8	424.54	0.654	Level 1	
16,400.0	7,053.0	16,557.0	7,223.0	267.1	266.7	-127.75	604.4	9,500.1	277.7	-151.4	429.05	0.647	Level 1	
16,500.0	7,053.0	16,657.0	7,223.0	269.9	269.5	-127.75	605.1	9,600.1	277.7	-155.9	433.55	0.640	Level 1	
16,600.0	7,053.0	16,757.0	7,223.0	272.7	272.3	-127.75	605.9	9,700.1	277.7	-160.4	438.06	0.634	Level 1	
16,700.0	7,053.0	16,857.0	7,223.0	275.5	275.1	-127.75	606.6	9,800.1	277.7	-164.9	442.57	0.627	Level 1	
16,800.0	7,053.0	16,957.0	7,223.0	278.3	277.9	-127.75	607.3	9,900.1	277.7	-169.4	447.08	0.621	Level 1	
16,856.8	7,053.0	17,013.8	7,223.0	279.9	279.4	-127.75	607.7	9,956.9	277.7	-171.9	449.53	0.618	Level 1, ES, SF	

<b>Company:</b>	Synergy Resources	<b>Local Co-ordinate Reference:</b>	Well SRC Wiedeman A-5-3NHZ
<b>Project:</b>	Sec.5-T5N-R66W	<b>TVD Reference:</b>	WELL @ 4796.0ft (RKB - 13')
<b>Reference Site:</b>	SRC Wiedeman Pad Sec.5-T5N-R66W	<b>MD Reference:</b>	WELL @ 4796.0ft (RKB - 13')
<b>Site Error:</b>	0.0ft	<b>North Reference:</b>	True
<b>Reference Well:</b>	SRC Wiedeman A-5-3NHZ	<b>Survey Calculation Method:</b>	Minimum Curvature
<b>Well Error:</b>	0.0ft	<b>Output errors are at</b>	2.00 sigma
<b>Reference Wellbore</b>	Wellbore #1	<b>Database:</b>	Landmark
<b>Reference Design:</b>	Plan #1 (6-24-14)	<b>Offset TVD Reference:</b>	Offset Datum

Offset Design SRC Wiedeman Pad Sec.5-T5N-R66W - SRC Wiedeman 21-5-3NHZ - Wellbore #1 - Plan #1 (6-24-14)													Offset Site Error:	0.0 ft
Survey Program: 0-MWD													Offset Well Error:	0.0 ft
Measured Depth (ft)	Vertical Depth (ft)	Measured Depth (ft)	Vertical Depth (ft)	Reference (ft)	Offset (ft)	Semi Major Axis Highside Toolface (°)	Offset Wellbore Centre +N/-S (ft)	+E/-W (ft)	Between Centres (ft)	Between Ellipses (ft)	Minimum Separation (ft)	Separation Factor	Warning	
0.0	0.0	0.0	0.0	0.0	0.0	5.85	29.9	3.1	30.0					
100.0	100.0	100.0	100.0	0.1	0.1	5.85	29.9	3.1	30.0	29.8	0.22	133.607		
200.0	200.0	200.0	200.0	0.3	0.3	5.85	29.9	3.1	30.0	29.4	0.67	44.536		
300.0	300.0	300.0	300.0	0.6	0.6	5.85	29.9	3.1	30.0	28.9	1.12	26.721		
400.0	400.0	400.0	400.0	0.8	0.8	5.85	29.9	3.1	30.0	28.5	1.57	19.087		
500.0	500.0	500.0	500.0	1.0	1.0	5.85	29.9	3.1	30.0	28.0	2.02	14.845 CC		
600.0	600.0	598.9	598.9	1.2	1.2	5.17	31.6	2.9	31.7	29.2	2.47	12.837		
700.0	700.0	697.7	697.5	1.5	1.5	3.51	36.6	2.2	36.8	33.9	2.92	12.589		
800.0	800.0	795.9	795.4	1.7	1.7	1.57	45.0	1.2	45.3	41.9	3.38	13.399		
900.0	900.0	893.5	892.2	1.9	1.9	-0.17	56.7	-0.2	57.2	53.3	3.84	14.880		
1,000.0	1,000.0	991.7	989.4	2.1	2.2	-1.52	70.9	-1.9	71.8	67.4	4.31	16.630		
1,100.0	1,100.0	1,090.6	1,087.2	2.4	2.5	-2.44	85.5	-3.6	86.6	81.8	4.79	18.087		
1,200.0	1,200.0	1,189.5	1,185.0	2.6	2.8	-3.09	100.1	-5.4	101.4	96.1	5.26	19.275		
1,300.0	1,300.0	1,288.4	1,282.8	2.8	3.2	-3.57	114.7	-7.2	116.2	110.4	5.73	20.258		
1,400.0	1,400.0	1,387.3	1,380.6	3.0	3.5	-3.95	129.2	-8.9	131.0	124.8	6.21	21.086		
1,500.0	1,500.0	1,486.1	1,478.4	3.3	3.8	-4.24	143.8	-10.7	145.8	139.1	6.69	21.791		
1,600.0	1,600.0	1,585.3	1,576.4	3.5	4.2	18.87	158.4	-12.4	159.0	152.0	7.05	22.563		
1,700.0	1,699.8	1,684.8	1,674.8	3.7	4.5	19.15	173.1	-14.2	168.9	161.4	7.51	22.499		
1,805.3	1,804.7	1,789.8	1,778.7	3.9	4.8	19.85	188.6	-16.1	175.9	167.9	7.99	21.998		
1,900.0	1,898.9	1,884.4	1,872.2	4.2	5.2	20.66	202.5	-17.7	180.5	172.0	8.44	21.370		
2,000.0	1,998.3	1,984.2	1,970.9	4.4	5.5	21.47	217.2	-19.5	185.4	176.4	8.92	20.773		
2,100.0	2,097.8	2,084.1	2,069.7	4.7	5.9	22.24	231.9	-21.3	190.3	180.9	9.41	20.232		
2,200.0	2,197.2	2,183.9	2,168.4	4.9	6.2	22.97	246.7	-23.1	195.3	185.4	9.89	19.741		
2,300.0	2,296.6	2,283.7	2,267.1	5.2	6.6	23.66	261.4	-24.8	200.3	189.9	10.38	19.294		
2,400.0	2,396.0	2,383.6	2,365.9	5.4	6.9	24.32	276.1	-26.6	205.3	194.4	10.87	18.884		
2,500.0	2,495.5	2,483.4	2,464.6	5.7	7.2	24.95	290.8	-28.4	210.4	199.0	11.37	18.507		
2,600.0	2,594.9	2,583.3	2,563.4	6.0	7.6	25.55	305.5	-30.2	215.5	203.6	11.86	18.160		
2,700.0	2,694.3	2,683.1	2,662.1	6.2	7.9	26.12	320.2	-31.9	220.6	208.2	12.36	17.838		
2,800.0	2,793.8	2,783.0	2,760.8	6.5	8.3	26.67	335.0	-33.7	225.7	212.8	12.87	17.541		
2,900.0	2,893.2	2,882.8	2,859.6	6.8	8.6	27.19	349.7	-35.5	230.8	217.5	13.37	17.264		
3,000.0	2,992.6	2,982.7	2,958.3	7.1	9.0	27.69	364.4	-37.3	236.0	222.1	13.88	17.006		
3,100.0	3,092.1	3,082.5	3,057.1	7.4	9.3	28.17	379.1	-39.0	241.2	226.8	14.39	16.764		
3,200.0	3,191.5	3,182.4	3,155.8	7.6	9.7	28.62	393.8	-40.8	246.4	231.5	14.90	16.539		
3,300.0	3,290.9	3,282.2	3,254.5	7.9	10.0	29.06	408.5	-42.6	251.6	236.2	15.41	16.327		
3,400.0	3,390.4	3,382.1	3,353.3	8.2	10.4	29.48	423.3	-44.3	256.8	240.9	15.92	16.128		
3,500.0	3,489.8	3,481.9	3,452.0	8.5	10.7	29.89	438.0	-46.1	262.1	245.6	16.44	15.941		
3,600.0	3,589.2	3,581.7	3,550.7	8.8	11.1	30.27	452.7	-47.9	267.3	250.3	16.96	15.764		
3,700.0	3,688.7	3,681.6	3,649.5	9.1	11.4	30.65	467.4	-49.7	272.6	255.1	17.48	15.597		
3,800.0	3,788.1	3,781.4	3,748.2	9.3	11.8	31.01	482.1	-51.4	277.8	259.8	18.00	15.439		
3,900.0	3,887.5	3,881.3	3,847.0	9.6	12.1	31.35	496.8	-53.2	283.1	264.6	18.52	15.289		
4,000.0	3,987.0	3,981.1	3,945.7	9.9	12.5	31.68	511.6	-55.0	288.4	269.4	19.04	15.148		
4,100.0	4,086.4	4,081.0	4,044.4	10.2	12.8	32.00	526.3	-56.8	293.7	274.2	19.56	15.013		
4,200.0	4,185.8	4,180.8	4,143.2	10.5	13.2	32.31	541.0	-58.5	299.0	278.9	20.09	14.885		
4,300.0	4,285.3	4,280.7	4,241.9	10.8	13.5	32.61	555.7	-60.3	304.4	283.7	20.62	14.763		
4,400.0	4,384.7	4,380.5	4,340.7	11.1	13.9	32.90	570.4	-62.1	309.7	288.5	21.14	14.646		
4,500.0	4,484.1	4,480.4	4,439.4	11.4	14.2	33.18	585.1	-63.9	315.0	293.3	21.67	14.535		
4,600.0	4,583.6	4,580.2	4,538.1	11.7	14.6	33.45	599.9	-65.6	320.4	298.2	22.20	14.429		
4,700.0	4,683.0	4,680.1	4,636.9	11.9	14.9	33.71	614.6	-67.4	325.7	303.0	22.73	14.328		
4,712.4	4,695.3	4,692.4	4,649.1	12.0	15.0	33.74	616.4	-67.6	326.4	303.6	22.80	14.316		
4,800.0	4,782.6	4,779.8	4,735.6	12.2	15.3	33.90	629.3	-69.2	332.2	309.0	23.22	14.307		
4,900.0	4,882.4	4,879.4	4,834.0	12.4	15.6	33.79	643.9	-70.9	341.5	317.9	23.62	14.457		
5,000.0	4,982.4	4,978.6	4,932.1	12.6	16.0	33.42	658.6	-72.7	353.8	329.8	23.98	14.752		

CC - Min centre to center distance or convergent point, SF - min separation factor, ES - min ellipse separation

<b>Company:</b>	Synergy Resources	<b>Local Co-ordinate Reference:</b>	Well SRC Wiedeman A-5-3NHZ
<b>Project:</b>	Sec.5-T5N-R66W	<b>TVD Reference:</b>	WELL @ 4796.0ft (RKB - 13')
<b>Reference Site:</b>	SRC Wiedeman Pad Sec.5-T5N-R66W	<b>MD Reference:</b>	WELL @ 4796.0ft (RKB - 13')
<b>Site Error:</b>	0.0ft	<b>North Reference:</b>	True
<b>Reference Well:</b>	SRC Wiedeman A-5-3NHZ	<b>Survey Calculation Method:</b>	Minimum Curvature
<b>Well Error:</b>	0.0ft	<b>Output errors are at</b>	2.00 sigma
<b>Reference Wellbore</b>	Wellbore #1	<b>Database:</b>	Landmark
<b>Reference Design:</b>	Plan #1 (6-24-14)	<b>Offset TVD Reference:</b>	Offset Datum

Offset Design SRC Wiedeman Pad Sec.5-T5N-R66W - SRC Wiedeman 21-5-3NHZ - Wellbore #1 - Plan #1 (6-24-14)												Offset Site Error:	0.0 ft
Survey Program: 0-MWD												Offset Well Error:	0.0 ft
Reference		Offset		Semi Major Axis			Distance						Warning
Measured Depth (ft)	Vertical Depth (ft)	Measured Depth (ft)	Vertical Depth (ft)	Reference (ft)	Offset (ft)	Highside Toolface (°)	Offset Wellbore Centre +N/-S (ft)	+E/-W (ft)	Between Centres (ft)	Between Ellipses (ft)	Minimum Separation (ft)	Separation Factor	
5,017.6	5,000.0	4,996.0	4,949.4	12.6	16.1	10.09	661.1	-73.0	356.2	328.4	27.83	12.799	
5,100.0	5,082.4	5,077.5	5,029.9	12.7	16.3	9.54	673.1	-74.5	367.9	339.6	28.29	13.005	
5,200.0	5,182.4	5,176.4	5,127.7	12.9	16.7	8.91	687.7	-76.2	382.2	353.3	28.87	13.239	
5,300.0	5,282.4	5,275.3	5,225.5	13.1	17.0	8.33	702.3	-78.0	396.5	367.1	29.44	13.467	
5,400.0	5,382.4	5,374.2	5,323.3	13.3	17.4	7.78	716.9	-79.7	410.9	380.9	30.02	13.688	
5,500.0	5,482.4	5,473.0	5,421.1	13.5	17.7	7.28	731.4	-81.5	425.3	394.7	30.59	13.903	
5,600.0	5,582.4	5,571.9	5,518.9	13.7	18.1	6.81	746.0	-83.2	439.7	408.5	31.16	14.111	
5,700.0	5,682.4	5,678.6	5,624.4	13.9	18.4	6.34	761.3	-85.1	453.8	422.0	31.73	14.300	
5,800.0	5,782.4	5,796.4	5,741.5	14.1	18.7	5.97	774.3	-86.6	464.6	432.3	32.25	14.407	
5,900.0	5,882.4	5,915.0	5,859.9	14.3	19.0	5.75	782.5	-87.6	471.4	438.7	32.69	14.418	
6,000.0	5,982.4	6,034.2	5,979.0	14.5	19.1	5.66	785.8	-88.0	474.1	441.0	33.09	14.329	
6,100.0	6,082.4	6,137.6	6,082.4	14.7	19.3	5.66	785.9	-88.0	474.2	440.7	33.44	14.180	
6,200.0	6,182.4	6,237.6	6,182.4	14.9	19.4	5.66	785.9	-88.0	474.2	440.4	33.80	14.031	
6,300.0	6,282.4	6,337.6	6,282.4	15.1	19.6	5.66	785.9	-88.0	474.2	440.0	34.15	13.883	
6,354.4	6,336.8	6,392.1	6,336.8	15.2	19.7	5.66	785.9	-88.0	474.2	439.8	34.35	13.804	
6,400.0	6,382.3	6,434.6	6,379.3	15.3	19.7	-83.93	785.9	-86.8	474.2	444.4	29.80	15.911	
6,450.0	6,432.1	6,481.4	6,425.9	15.4	19.8	-83.97	785.9	-82.5	474.1	444.2	29.97	15.822	
6,500.0	6,481.4	6,528.1	6,472.1	15.5	19.9	-84.04	786.0	-75.2	474.1	444.0	30.11	15.743	
6,550.0	6,529.9	6,574.9	6,517.7	15.5	19.9	-84.13	786.0	-64.8	474.0	443.7	30.25	15.671	
6,600.0	6,577.6	6,621.8	6,562.6	15.6	20.0	-84.25	786.1	-51.5	473.9	443.5	30.37	15.602	
6,650.0	6,624.0	6,668.7	6,606.6	15.6	20.0	-84.40	786.2	-35.3	473.8	443.3	30.51	15.530	
6,700.0	6,669.1	6,715.7	6,649.5	15.7	20.1	-84.57	786.4	-16.2	473.6	443.0	30.65	15.452	
6,750.0	6,712.5	6,762.8	6,691.2	15.7	20.1	-84.77	786.5	5.8	473.5	442.6	30.83	15.360	
6,800.0	6,754.2	6,810.0	6,731.4	15.8	20.2	-84.99	786.7	30.5	473.3	442.3	31.05	15.244	
6,850.0	6,793.7	6,857.3	6,770.0	15.8	20.2	-85.23	786.9	57.8	473.1	441.8	31.33	15.101	
6,900.0	6,831.1	6,904.7	6,806.8	15.9	20.3	-85.50	787.1	87.7	472.9	441.2	31.69	14.922	
6,950.0	6,866.1	6,952.2	6,841.6	16.0	20.4	-85.79	787.4	120.1	472.8	440.6	32.16	14.700	
7,000.0	6,898.4	7,000.0	6,874.3	16.3	20.5	-86.10	787.6	154.9	472.6	439.8	32.74	14.432	
7,050.0	6,928.1	7,047.8	6,904.7	16.7	20.6	-86.43	787.9	191.8	472.4	438.9	33.47	14.115	
7,100.0	6,954.8	7,095.9	6,932.7	17.1	20.8	-86.77	788.2	230.8	472.2	437.9	34.34	13.753	
7,150.0	6,978.6	7,144.1	6,958.1	17.7	21.0	-87.13	788.5	271.8	472.0	436.7	35.36	13.350	
7,200.0	6,999.2	7,192.5	6,980.7	18.3	21.2	-87.51	788.8	314.6	471.9	435.4	36.54	12.914	
7,250.0	7,016.6	7,241.1	7,000.5	19.0	21.6	-87.90	789.1	359.0	471.8	433.9	37.88	12.455	
7,300.0	7,030.6	7,289.9	7,017.3	19.8	22.0	-88.29	789.4	404.8	471.6	432.3	39.36	11.982	
7,350.0	7,041.3	7,339.0	7,031.0	20.6	22.5	-88.70	789.8	451.9	471.5	430.6	40.98	11.507	
7,400.0	7,048.6	7,388.2	7,041.4	21.5	23.2	-89.12	790.1	500.0	471.5	428.8	42.71	11.039	
7,450.0	7,052.4	7,437.7	7,048.6	22.5	23.9	-89.54	790.4	549.0	471.4	426.9	44.54	10.583	
7,479.4	7,053.0	7,467.0	7,051.3	23.1	24.4	-89.79	790.7	578.1	471.4	425.7	45.66	10.324	
7,500.0	7,053.0	7,487.5	7,052.4	23.5	24.7	-89.93	790.8	598.6	471.4	424.9	46.46	10.147	
7,600.0	7,053.0	7,587.4	7,053.0	25.6	26.5	-90.00	791.5	698.5	471.4	420.8	50.55	9.325	
7,700.0	7,053.0	7,687.4	7,053.0	27.8	28.5	-90.00	792.2	798.5	471.4	416.5	54.92	8.583	
7,800.0	7,053.0	7,787.4	7,053.0	30.1	30.6	-90.00	793.0	898.5	471.4	411.9	59.49	7.923	
7,900.0	7,053.0	7,887.4	7,053.0	32.5	32.9	-90.00	793.7	998.5	471.3	407.1	64.23	7.338	
8,000.0	7,053.0	7,987.4	7,053.0	34.9	35.2	-90.00	794.4	1,098.5	471.3	402.2	69.10	6.821	
8,100.0	7,053.0	8,087.4	7,053.0	37.4	37.6	-90.00	795.1	1,198.5	471.3	397.2	74.08	6.363	
8,200.0	7,053.0	8,187.4	7,053.0	40.0	40.1	-90.00	795.9	1,298.5	471.3	392.2	79.14	5.956	
8,300.0	7,053.0	8,287.4	7,053.0	42.5	42.6	-90.00	796.6	1,398.5	471.3	387.0	84.27	5.593	
8,400.0	7,053.0	8,387.4	7,053.0	45.1	45.1	-90.00	797.3	1,498.5	471.3	381.8	89.46	5.268	
8,500.0	7,053.0	8,487.4	7,053.0	47.8	47.7	-90.00	798.0	1,598.5	471.3	376.6	94.70	4.977	
8,600.0	7,053.0	8,587.4	7,053.0	50.4	50.3	-90.00	798.7	1,698.5	471.2	371.3	99.97	4.714	
8,700.0	7,053.0	8,687.4	7,053.0	53.1	52.9	-90.00	799.5	1,798.5	471.2	365.9	105.29	4.476	
8,800.0	7,053.0	8,787.4	7,053.0	55.7	55.5	-90.00	800.2	1,898.5	471.2	360.6	110.63	4.259	

CC - Min centre to center distance or convergent point, SF - min separation factor, ES - min ellipse separation

<b>Company:</b>	Synergy Resources	<b>Local Co-ordinate Reference:</b>	Well SRC Wiedeman A-5-3NHZ
<b>Project:</b>	Sec.5-T5N-R66W	<b>TVD Reference:</b>	WELL @ 4796.0ft (RKB - 13')
<b>Reference Site:</b>	SRC Wiedeman Pad Sec.5-T5N-R66W	<b>MD Reference:</b>	WELL @ 4796.0ft (RKB - 13')
<b>Site Error:</b>	0.0ft	<b>North Reference:</b>	True
<b>Reference Well:</b>	SRC Wiedeman A-5-3NHZ	<b>Survey Calculation Method:</b>	Minimum Curvature
<b>Well Error:</b>	0.0ft	<b>Output errors are at</b>	2.00 sigma
<b>Reference Wellbore</b>	Wellbore #1	<b>Database:</b>	Landmark
<b>Reference Design:</b>	Plan #1 (6-24-14)	<b>Offset TVD Reference:</b>	Offset Datum

Offset Design												Offset Site Error:	0.0 ft
Survey Program: 0-MWD												Offset Well Error:	0.0 ft
Reference		Offset		Semi Major Axis			Distance						Warning
Measured Depth (ft)	Vertical Depth (ft)	Measured Depth (ft)	Vertical Depth (ft)	Reference (ft)	Offset (ft)	Highside Toolface (°)	Offset Wellbore Centre +N/-S (ft)	+E/-W (ft)	Between Centres (ft)	Between Ellipses (ft)	Minimum Separation (ft)	Separation Factor	
8,900.0	7,053.0	8,887.4	7,053.0	58.4	58.2	-90.00	800.9	1,998.5	471.2	355.2	116.00	4.062	
9,000.0	7,053.0	8,987.4	7,053.0	61.1	60.8	-90.00	801.6	2,098.5	471.2	349.8	121.39	3.882	
9,100.0	7,053.0	9,087.4	7,053.0	63.8	63.5	-90.00	802.3	2,198.5	471.2	344.4	126.80	3.716	
9,200.0	7,053.0	9,187.4	7,053.0	66.6	66.2	-90.00	803.1	2,298.5	471.2	338.9	132.23	3.563	
9,300.0	7,053.0	9,287.4	7,053.0	69.3	68.9	-90.00	803.8	2,398.5	471.1	333.5	137.67	3.422	
9,400.0	7,053.0	9,387.4	7,053.0	72.0	71.6	-90.00	804.5	2,498.5	471.1	328.0	143.13	3.292	
9,500.0	7,053.0	9,487.4	7,053.0	74.7	74.3	-90.00	805.2	2,598.5	471.1	322.5	148.59	3.170	
9,600.0	7,053.0	9,587.4	7,053.0	77.5	77.1	-90.00	805.9	2,698.5	471.1	317.0	154.07	3.058	
9,700.0	7,053.0	9,687.4	7,053.0	80.2	79.8	-90.00	806.7	2,798.5	471.1	311.5	159.56	2.952	
9,800.0	7,053.0	9,787.4	7,053.0	83.0	82.5	-90.00	807.4	2,898.5	471.1	306.0	165.06	2.854	
9,900.0	7,053.0	9,887.4	7,053.0	85.7	85.3	-90.00	808.1	2,998.5	471.1	300.5	170.56	2.762	
10,000.0	7,053.0	9,987.4	7,053.0	88.5	88.0	-90.00	808.8	3,098.5	471.0	295.0	176.07	2.675	
10,100.0	7,053.0	10,087.4	7,053.0	91.2	90.7	-90.00	809.5	3,198.5	471.0	289.4	181.59	2.594	
10,200.0	7,053.0	10,187.4	7,053.0	94.0	93.5	-90.00	810.3	3,298.5	471.0	283.9	187.11	2.517	
10,300.0	7,053.0	10,287.4	7,053.0	96.8	96.2	-90.00	811.0	3,398.5	471.0	278.4	192.64	2.445	
10,400.0	7,053.0	10,387.4	7,053.0	99.5	99.0	-90.00	811.7	3,498.5	471.0	272.8	198.17	2.377	
10,500.0	7,053.0	10,487.4	7,053.0	102.3	101.8	-90.00	812.4	3,598.5	471.0	267.3	203.71	2.312	
10,600.0	7,053.0	10,587.4	7,053.0	105.1	104.5	-90.00	813.1	3,698.5	471.0	261.7	209.25	2.251	
10,700.0	7,053.0	10,687.4	7,053.0	107.9	107.3	-90.00	813.9	3,798.4	470.9	256.1	214.80	2.193	
10,800.0	7,053.0	10,787.4	7,053.0	110.6	110.0	-90.00	814.6	3,898.4	470.9	250.6	220.34	2.137	
10,900.0	7,053.0	10,887.4	7,053.0	113.4	112.8	-90.00	815.3	3,998.4	470.9	245.0	225.90	2.085	
11,000.0	7,053.0	10,987.4	7,053.0	116.2	115.6	-90.00	816.0	4,098.4	470.9	239.4	231.45	2.035	
11,100.0	7,053.0	11,087.4	7,053.0	119.0	118.4	-90.00	816.7	4,198.4	470.9	233.9	237.01	1.987	
11,200.0	7,053.0	11,187.4	7,053.0	121.7	121.1	-90.00	817.5	4,298.4	470.9	228.3	242.57	1.941	
11,300.0	7,053.0	11,287.4	7,053.0	124.5	123.9	-90.00	818.2	4,398.4	470.9	222.7	248.13	1.898	
11,400.0	7,053.0	11,387.4	7,053.0	127.3	126.7	-90.00	818.9	4,498.4	470.8	217.1	253.70	1.856	
11,500.0	7,053.0	11,487.4	7,053.0	130.1	129.5	-90.00	819.6	4,598.4	470.8	211.6	259.26	1.816	
11,600.0	7,053.0	11,587.4	7,053.0	132.9	132.2	-90.00	820.4	4,698.4	470.8	206.0	264.83	1.778	
11,700.0	7,053.0	11,687.4	7,053.0	135.7	135.0	-90.00	821.1	4,798.4	470.8	200.4	270.40	1.741	
11,800.0	7,053.0	11,787.4	7,053.0	138.4	137.8	-90.00	821.8	4,898.4	470.8	194.8	275.98	1.706	
11,900.0	7,053.0	11,887.4	7,053.0	141.2	140.6	-90.00	822.5	4,998.4	470.8	189.2	281.55	1.672	
12,000.0	7,053.0	11,987.4	7,053.0	144.0	143.4	-90.00	823.2	5,098.4	470.8	183.6	287.13	1.640	
12,100.0	7,053.0	12,087.4	7,053.0	146.8	146.1	-90.00	824.0	5,198.4	470.7	178.0	292.70	1.608	
12,200.0	7,053.0	12,187.4	7,053.0	149.6	148.9	-90.00	824.7	5,298.4	470.7	172.4	298.28	1.578	
12,300.0	7,053.0	12,287.4	7,053.0	152.4	151.7	-90.00	825.4	5,398.4	470.7	166.8	303.86	1.549	
12,400.0	7,053.0	12,387.4	7,053.0	155.2	154.5	-90.00	826.1	5,498.4	470.7	161.3	309.44	1.521	
12,500.0	7,053.0	12,487.4	7,053.0	158.0	157.3	-90.00	826.8	5,598.4	470.7	155.7	315.03	1.494 Level 3	
12,600.0	7,053.0	12,587.4	7,053.0	160.8	160.1	-90.00	827.6	5,698.4	470.7	150.1	320.61	1.468 Level 3	
12,700.0	7,053.0	12,687.4	7,053.0	163.6	162.9	-90.00	828.3	5,798.4	470.7	144.5	326.20	1.443 Level 3	
12,800.0	7,053.0	12,787.4	7,053.0	166.3	165.6	-90.00	829.0	5,898.4	470.6	138.9	331.78	1.419 Level 3	
12,900.0	7,053.0	12,887.4	7,053.0	169.1	168.4	-90.00	829.7	5,998.4	470.6	133.3	337.37	1.395 Level 3	
13,000.0	7,053.0	12,987.4	7,053.0	171.9	171.2	-90.00	830.4	6,098.4	470.6	127.7	342.95	1.372 Level 3	
13,100.0	7,053.0	13,087.4	7,053.0	174.7	174.0	-90.00	831.2	6,198.4	470.6	122.1	348.54	1.350 Level 3	
13,200.0	7,053.0	13,187.4	7,053.0	177.5	176.8	-90.00	831.9	6,298.4	470.6	116.4	354.13	1.329 Level 3	
13,300.0	7,053.0	13,287.4	7,053.0	180.3	179.6	-90.00	832.6	6,398.4	470.6	110.8	359.72	1.308 Level 3	
13,400.0	7,053.0	13,387.4	7,053.0	183.1	182.4	-90.00	833.3	6,498.4	470.6	105.2	365.31	1.288 Level 3	
13,500.0	7,053.0	13,487.4	7,053.0	185.9	185.2	-90.00	834.0	6,598.4	470.5	99.6	370.90	1.269 Level 3	
13,600.0	7,053.0	13,587.4	7,053.0	188.7	188.0	-90.00	834.8	6,698.4	470.5	94.0	376.50	1.250 Level 2	
13,700.0	7,053.0	13,687.4	7,053.0	191.5	190.8	-90.00	835.5	6,798.4	470.5	88.4	382.09	1.231 Level 2	
13,800.0	7,053.0	13,787.4	7,053.0	194.3	193.6	-90.00	836.2	6,898.4	470.5	82.8	387.68	1.214 Level 2	
13,900.0	7,053.0	13,887.4	7,053.0	197.1	196.4	-90.00	836.9	6,998.4	470.5	77.2	393.28	1.196 Level 2	
14,000.0	7,053.0	13,987.4	7,053.0	199.9	199.2	-90.00	837.6	7,098.4	470.5	71.6	398.87	1.179 Level 2	

CC - Min centre to center distance or convergent point, SF - min separation factor, ES - min ellipse separation

<b>Company:</b>	Synergy Resources	<b>Local Co-ordinate Reference:</b>	Well SRC Wiedeman A-5-3NHZ
<b>Project:</b>	Sec.5-T5N-R66W	<b>TVD Reference:</b>	WELL @ 4796.0ft (RKB - 13')
<b>Reference Site:</b>	SRC Wiedeman Pad Sec.5-T5N-R66W	<b>MD Reference:</b>	WELL @ 4796.0ft (RKB - 13')
<b>Site Error:</b>	0.0ft	<b>North Reference:</b>	True
<b>Reference Well:</b>	SRC Wiedeman A-5-3NHZ	<b>Survey Calculation Method:</b>	Minimum Curvature
<b>Well Error:</b>	0.0ft	<b>Output errors are at</b>	2.00 sigma
<b>Reference Wellbore</b>	Wellbore #1	<b>Database:</b>	Landmark
<b>Reference Design:</b>	Plan #1 (6-24-14)	<b>Offset TVD Reference:</b>	Offset Datum

Offset Design SRC Wiedeman Pad Sec.5-T5N-R66W - SRC Wiedeman 21-5-3NHZ - Wellbore #1 - Plan #1 (6-24-14)													Offset Site Error:	0.0 ft
Survey Program: 0-MWD													Offset Well Error:	0.0 ft
Reference		Offset		Semi Major Axis			Distance							Warning
Measured Depth (ft)	Vertical Depth (ft)	Measured Depth (ft)	Vertical Depth (ft)	Reference (ft)	Offset (ft)	Highside Toolface (°)	Offset Wellbore Centre +N/-S (ft)	+E/-W (ft)	Between Centres (ft)	Between Ellipses (ft)	Minimum Separation (ft)	Separation Factor		
14,100.0	7,053.0	14,087.4	7,053.0	202.7	201.9	-90.00	838.4	7,198.4	470.5	66.0	404.47	1.163	Level 2	
14,200.0	7,053.0	14,187.4	7,053.0	205.5	204.7	-90.00	839.1	7,298.4	470.4	60.4	410.06	1.147	Level 2	
14,300.0	7,053.0	14,287.4	7,053.0	208.3	207.5	-90.00	839.8	7,398.4	470.4	54.8	415.66	1.132	Level 2	
14,400.0	7,053.0	14,387.4	7,053.0	211.1	210.3	-90.00	840.5	7,498.4	470.4	49.2	421.25	1.117	Level 2	
14,500.0	7,053.0	14,487.4	7,053.0	213.9	213.1	-90.00	841.2	7,598.4	470.4	43.5	426.85	1.102	Level 2	
14,600.0	7,053.0	14,587.4	7,053.0	216.7	215.9	-90.00	842.0	7,698.3	470.4	37.9	432.45	1.088	Level 2	
14,700.0	7,053.0	14,687.4	7,053.0	219.5	218.7	-90.00	842.7	7,798.3	470.4	32.3	438.05	1.074	Level 2	
14,800.0	7,053.0	14,787.4	7,053.0	222.3	221.5	-90.00	843.4	7,898.3	470.3	26.7	443.64	1.060	Level 2	
14,900.0	7,053.0	14,887.4	7,053.0	225.1	224.3	-90.00	844.1	7,998.3	470.3	21.1	449.24	1.047	Level 2	
15,000.0	7,053.0	14,987.4	7,053.0	227.9	227.1	-90.00	844.8	8,098.3	470.3	15.5	454.84	1.034	Level 2	
15,100.0	7,053.0	15,087.4	7,053.0	230.7	229.9	-90.00	845.6	8,198.3	470.3	9.9	460.44	1.021	Level 2	
15,200.0	7,053.0	15,187.4	7,053.0	233.5	232.7	-90.00	846.3	8,298.3	470.3	4.2	466.04	1.009	Level 2	
15,300.0	7,053.0	15,287.4	7,053.0	236.3	235.5	-90.00	847.0	8,398.3	470.3	-1.4	471.64	0.997	Level 1	
15,400.0	7,053.0	15,387.4	7,053.0	239.1	238.3	-90.00	847.7	8,498.3	470.3	-7.0	477.24	0.985	Level 1	
15,500.0	7,053.0	15,487.4	7,053.0	241.9	241.1	-90.00	848.5	8,598.3	470.2	-12.6	482.84	0.974	Level 1	
15,600.0	7,053.0	15,587.4	7,053.0	244.7	243.9	-90.00	849.2	8,698.3	470.2	-18.2	488.44	0.963	Level 1	
15,700.0	7,053.0	15,687.4	7,053.0	247.5	246.7	-90.00	849.9	8,798.3	470.2	-23.8	494.04	0.952	Level 1	
15,800.0	7,053.0	15,787.4	7,053.0	250.3	249.5	-90.00	850.6	8,898.3	470.2	-29.4	499.65	0.941	Level 1	
15,900.0	7,053.0	15,887.4	7,053.0	253.1	252.3	-90.00	851.3	8,998.3	470.2	-35.1	505.25	0.931	Level 1	
16,000.0	7,053.0	15,987.4	7,053.0	255.9	255.1	-90.00	852.1	9,098.3	470.2	-40.7	510.85	0.920	Level 1	
16,100.0	7,053.0	16,087.4	7,053.0	258.7	257.9	-90.00	852.8	9,198.3	470.2	-46.3	516.45	0.910	Level 1	
16,200.0	7,053.0	16,187.4	7,053.0	261.5	260.7	-90.00	853.5	9,298.3	470.1	-51.9	522.06	0.901	Level 1	
16,300.0	7,053.0	16,287.4	7,053.0	264.3	263.5	-90.00	854.2	9,398.3	470.1	-57.5	527.66	0.891	Level 1	
16,400.0	7,053.0	16,387.4	7,053.0	267.1	266.3	-90.00	854.9	9,498.3	470.1	-63.1	533.26	0.882	Level 1	
16,500.0	7,053.0	16,487.4	7,053.0	269.9	269.1	-90.00	855.7	9,598.3	470.1	-68.8	538.87	0.872	Level 1	
16,600.0	7,053.0	16,587.4	7,053.0	272.7	271.9	-90.00	856.4	9,698.3	470.1	-74.4	544.47	0.863	Level 1	
16,700.0	7,053.0	16,687.4	7,053.0	275.5	274.7	-90.00	857.1	9,798.3	470.1	-80.0	550.07	0.855	Level 1	
16,800.0	7,053.0	16,787.4	7,053.0	278.3	277.5	-90.00	857.8	9,898.3	470.1	-85.6	555.68	0.846	Level 1	
16,856.8	7,053.0	16,844.3	7,053.0	279.9	279.1	-90.00	858.2	9,955.1	470.1	-88.8	558.86	0.841	Level 1, ES, SF	

<b>Company:</b>	Synergy Resources	<b>Local Co-ordinate Reference:</b>	Well SRC Wiedeman A-5-3NHZ
<b>Project:</b>	Sec.5-T5N-R66W	<b>TVD Reference:</b>	WELL @ 4796.0ft (RKB - 13')
<b>Reference Site:</b>	SRC Wiedeman Pad Sec.5-T5N-R66W	<b>MD Reference:</b>	WELL @ 4796.0ft (RKB - 13')
<b>Site Error:</b>	0.0ft	<b>North Reference:</b>	True
<b>Reference Well:</b>	SRC Wiedeman A-5-3NHZ	<b>Survey Calculation Method:</b>	Minimum Curvature
<b>Well Error:</b>	0.0ft	<b>Output errors are at</b>	2.00 sigma
<b>Reference Wellbore</b>	Wellbore #1	<b>Database:</b>	Landmark
<b>Reference Design:</b>	Plan #1 (6-24-14)	<b>Offset TVD Reference:</b>	Offset Datum

Offset Design SRC Wiedeman Pad Sec.5-T5N-R66W - SRC Wiedeman A-5-3CHZ - Wellbore #1 - Plan #1 (6-24-14)													Offset Site Error:	0.0 ft
Survey Program: 0-MWD													Offset Well Error:	0.0 ft
Measured Depth Reference (ft)	Vertical Depth (ft)	Measured Depth Offset (ft)	Vertical Depth (ft)	Reference (ft)	Offset (ft)	Semi Major Axis Highside Toolface (°)	Offset Wellbore Centre +N/-S (ft)	+E/-W (ft)	Between Centres (ft)	Between Ellipses (ft)	Minimum Separation (ft)	Separation Factor	Warning	
0.0	0.0	0.0	0.0	0.0	0.0	-174.68	-14.9	-1.4	15.0	15.0	0.00	N/A		
100.0	100.0	100.0	100.0	0.1	0.1	-174.68	-14.9	-1.4	15.0	14.8	0.22	66.743		
200.0	200.0	200.0	200.0	0.3	0.3	-174.68	-14.9	-1.4	15.0	14.3	0.67	22.248		
300.0	300.0	300.0	300.0	0.6	0.6	-174.68	-14.9	-1.4	15.0	13.9	1.12	13.349		
400.0	400.0	400.0	400.0	0.8	0.8	-174.68	-14.9	-1.4	15.0	13.4	1.57	9.535		
500.0	500.0	500.0	500.0	1.0	1.0	-174.68	-14.9	-1.4	15.0	13.0	2.02	7.416		
600.0	600.0	600.0	600.0	1.2	1.2	-174.68	-14.9	-1.4	15.0	12.5	2.47	6.068		
700.0	700.0	700.0	700.0	1.5	1.5	-174.68	-14.9	-1.4	15.0	12.1	2.92	5.134		
800.0	800.0	800.0	800.0	1.7	1.7	-174.68	-14.9	-1.4	15.0	11.6	3.37	4.450		
900.0	900.0	900.0	900.0	1.9	1.9	-174.68	-14.9	-1.4	15.0	11.2	3.82	3.926		
1,000.0	1,000.0	1,000.0	1,000.0	2.1	2.1	-174.68	-14.9	-1.4	15.0	10.7	4.27	3.513		
1,100.0	1,100.0	1,100.0	1,100.0	2.4	2.4	-174.68	-14.9	-1.4	15.0	10.3	4.72	3.178		
1,200.0	1,200.0	1,200.0	1,200.0	2.6	2.6	-174.68	-14.9	-1.4	15.0	9.8	5.17	2.902		
1,300.0	1,300.0	1,300.0	1,300.0	2.8	2.8	-174.68	-14.9	-1.4	15.0	9.4	5.62	2.670		
1,400.0	1,400.0	1,400.0	1,400.0	3.0	3.0	-174.68	-14.9	-1.4	15.0	8.9	6.07	2.472		
1,500.0	1,500.0	1,500.0	1,500.0	3.3	3.3	-174.68	-14.9	-1.4	15.0	8.5	6.52	2.301 CC		
1,600.0	1,600.0	1,600.0	1,600.0	3.5	3.5	-154.32	-14.9	-1.4	16.6	9.6	6.96	2.377		
1,700.0	1,699.8	1,699.8	1,699.8	3.7	3.7	-160.37	-14.9	-1.4	21.4	14.0	7.40	2.889		
1,805.3	1,804.7	1,804.7	1,804.7	3.9	3.9	-166.23	-14.9	-1.4	30.3	22.4	7.86	3.854		
1,900.0	1,898.9	1,898.9	1,898.9	4.2	4.2	-169.65	-14.9	-1.4	40.1	31.9	8.28	4.848		
2,000.0	1,998.3	1,998.3	1,998.3	4.4	4.4	-171.81	-14.9	-1.4	50.6	41.9	8.73	5.802		
2,100.0	2,097.8	2,099.4	2,099.4	4.7	4.6	-172.22	-13.9	-2.8	59.9	50.7	9.18	6.525		
2,200.0	2,197.2	2,200.9	2,200.7	4.9	4.8	-170.56	-10.9	-7.2	66.4	56.8	9.62	6.901		
2,300.0	2,296.6	2,302.5	2,301.9	5.2	5.0	-167.22	-5.8	-14.5	70.4	60.3	10.08	6.984		
2,400.0	2,396.0	2,402.6	2,401.5	5.4	5.3	-162.92	0.6	-23.6	73.1	62.5	10.56	6.921		
2,500.0	2,495.5	2,502.5	2,500.6	5.7	5.5	-158.91	7.0	-32.8	76.0	65.0	11.04	6.887		
2,600.0	2,594.9	2,602.3	2,599.8	6.0	5.8	-155.22	13.5	-41.9	79.3	67.8	11.53	6.878		
2,700.0	2,694.3	2,702.1	2,699.0	6.2	6.0	-151.84	19.9	-51.1	82.9	70.9	12.04	6.889		
2,800.0	2,793.8	2,801.9	2,798.2	6.5	6.3	-148.75	26.3	-60.3	86.8	74.3	12.56	6.914		
2,900.0	2,893.2	2,901.7	2,897.4	6.8	6.5	-145.93	32.7	-69.4	90.9	77.8	13.08	6.950		
3,000.0	2,992.6	3,001.6	2,996.6	7.1	6.8	-143.36	39.1	-78.6	95.2	81.6	13.62	6.994		
3,100.0	3,092.1	3,101.4	3,095.8	7.4	7.1	-141.01	45.6	-87.8	99.7	85.6	14.16	7.044		
3,200.0	3,191.5	3,201.2	3,195.0	7.6	7.3	-138.87	52.0	-96.9	104.4	89.7	14.70	7.097		
3,300.0	3,290.9	3,301.0	3,294.2	7.9	7.6	-136.91	58.4	-106.1	109.1	93.9	15.26	7.153		
3,400.0	3,390.4	3,400.8	3,393.4	8.2	7.9	-135.12	64.8	-115.3	114.0	98.2	15.81	7.210		
3,500.0	3,489.8	3,500.7	3,492.5	8.5	8.2	-133.48	71.2	-124.4	119.0	102.6	16.37	7.268		
3,600.0	3,589.2	3,600.5	3,591.7	8.8	8.4	-131.97	77.7	-133.6	124.1	107.1	16.94	7.326		
3,700.0	3,688.7	3,700.0	3,690.6	9.1	8.7	-130.60	84.0	-142.7	129.2	111.7	17.50	7.386		
3,800.0	3,788.1	3,799.4	3,789.6	9.3	8.9	-130.22	89.2	-150.1	134.8	116.8	17.98	7.496		
3,900.0	3,887.5	3,898.4	3,888.5	9.6	9.1	-131.26	92.4	-154.7	140.8	122.4	18.42	7.645		
4,000.0	3,987.0	3,997.1	3,987.1	9.9	9.3	-133.51	93.6	-156.4	147.6	128.8	18.82	7.843		
4,100.0	4,086.4	4,096.4	4,086.4	10.2	9.5	-136.34	93.7	-156.4	155.2	135.9	19.22	8.075		
4,200.0	4,185.8	4,195.8	4,185.8	10.5	9.7	-138.91	93.7	-156.4	163.0	143.4	19.63	8.307		
4,300.0	4,285.3	4,295.2	4,285.3	10.8	9.9	-141.25	93.7	-156.4	171.2	151.2	20.04	8.543		
4,400.0	4,384.7	4,394.7	4,384.7	11.1	10.1	-143.37	93.7	-156.4	179.7	159.2	20.46	8.783		
4,500.0	4,484.1	4,494.1	4,484.1	11.4	10.3	-145.29	93.7	-156.4	188.3	167.4	20.87	9.022		
4,600.0	4,583.6	4,593.5	4,583.6	11.7	10.5	-147.05	93.7	-156.4	197.2	175.9	21.29	9.261		
4,700.0	4,683.0	4,693.0	4,683.0	11.9	10.7	-148.66	93.7	-156.4	206.2	184.5	21.71	9.497		
4,712.4	4,695.3	4,705.3	4,695.3	12.0	10.8	-148.85	93.7	-156.4	207.3	185.6	21.76	9.526		
4,800.0	4,782.6	4,792.5	4,782.6	12.2	10.9	-150.02	93.7	-156.4	214.2	192.1	22.12	9.683		
4,900.0	4,882.4	4,892.4	4,882.4	12.4	11.2	-150.83	93.7	-156.4	219.3	196.8	22.49	9.749		
5,000.0	4,982.4	4,992.3	4,982.4	12.6	11.4	-151.15	93.7	-156.4	221.4	198.5	22.85	9.685		

CC - Min centre to center distance or convergent point, SF - min separation factor, ES - min ellipse separation



<b>Company:</b>	Synergy Resources	<b>Local Co-ordinate Reference:</b>	Well SRC Wiedeman A-5-3NHZ
<b>Project:</b>	Sec.5-T5N-R66W	<b>TVD Reference:</b>	WELL @ 4796.0ft (RKB - 13')
<b>Reference Site:</b>	SRC Wiedeman Pad Sec.5-T5N-R66W	<b>MD Reference:</b>	WELL @ 4796.0ft (RKB - 13')
<b>Site Error:</b>	0.0ft	<b>North Reference:</b>	True
<b>Reference Well:</b>	SRC Wiedeman A-5-3NHZ	<b>Survey Calculation Method:</b>	Minimum Curvature
<b>Well Error:</b>	0.0ft	<b>Output errors are at</b>	2.00 sigma
<b>Reference Wellbore</b>	Wellbore #1	<b>Database:</b>	Landmark
<b>Reference Design:</b>	Plan #1 (6-24-14)	<b>Offset TVD Reference:</b>	Offset Datum

Offset Design		SRC Wiedeman Pad Sec.5-T5N-R66W - SRC Wiedeman A-5-3CHZ - Wellbore #1 - Plan #1 (6-24-14)										Offset Site Error:		0.0 ft
Survey Program: 0-MWD												Offset Well Error:		0.0 ft
Reference		Offset		Semi Major Axis			Distance							Warning
Measured Depth (ft)	Vertical Depth (ft)	Measured Depth (ft)	Vertical Depth (ft)	Reference (ft)	Offset (ft)	Highside Toolface (°)	Offset Wellbore Centre +N/-S (ft)	+E/-W (ft)	Between Centres (ft)	Between Ellipses (ft)	Minimum Separation (ft)	Separation Factor		
5,017.6	5,000.0	5,010.0	5,000.0	12.6	11.4	-174.39	93.7	-156.4	221.4	198.2	23.21	9.540		
5,100.0	5,082.4	5,092.3	5,082.4	12.7	11.6	-174.39	93.7	-156.4	221.4	197.9	23.53	9.408		
5,200.0	5,182.4	5,192.3	5,182.4	12.9	11.8	-174.39	93.7	-156.4	221.4	197.4	23.95	9.244		
5,300.0	5,282.4	5,292.3	5,282.4	13.1	12.0	-174.39	93.7	-156.4	221.4	197.0	24.37	9.085		
5,400.0	5,382.4	5,392.3	5,382.4	13.3	12.2	-174.39	93.7	-156.4	221.4	196.6	24.79	8.931		
5,500.0	5,482.4	5,492.3	5,482.4	13.5	12.4	-174.39	93.7	-156.4	221.4	196.2	25.21	8.782		
5,600.0	5,582.4	5,592.3	5,582.4	13.7	12.7	-174.39	93.7	-156.4	221.4	195.8	25.63	8.638		
5,700.0	5,682.4	5,692.3	5,682.4	13.9	12.9	-174.39	93.7	-156.4	221.4	195.3	26.05	8.498		
5,800.0	5,782.4	5,792.3	5,782.4	14.1	13.1	-174.39	93.7	-156.4	221.4	194.9	26.48	8.362		
5,900.0	5,882.4	5,892.3	5,882.4	14.3	13.3	-174.39	93.7	-156.4	221.4	194.5	26.90	8.230		
6,000.0	5,982.4	5,992.3	5,982.4	14.5	13.5	-174.39	93.7	-156.4	221.4	194.1	27.32	8.103		
6,100.0	6,082.4	6,092.3	6,082.4	14.7	13.7	-174.39	93.7	-156.4	221.4	193.7	27.75	7.978		
6,200.0	6,182.4	6,192.3	6,182.4	14.9	13.9	-174.39	93.7	-156.4	221.4	193.2	28.18	7.858		
6,300.0	6,282.4	6,292.3	6,282.4	15.1	14.2	-174.39	93.7	-156.4	221.4	192.8	28.60	7.740		
6,354.4	6,336.8	6,346.8	6,336.8	15.2	14.3	-174.39	93.7	-156.4	221.4	192.6	28.84	7.678		
6,400.0	6,382.3	6,392.3	6,382.3	15.3	14.4	96.39	93.7	-156.4	221.6	192.7	28.86	7.678		
6,450.0	6,432.1	6,442.0	6,432.1	15.4	14.5	97.60	93.7	-156.4	222.2	193.1	29.08	7.640		
6,500.0	6,481.4	6,491.3	6,481.4	15.5	14.6	99.59	93.7	-156.4	223.4	194.1	29.30	7.625		
6,550.0	6,529.9	6,541.6	6,531.6	15.5	14.7	102.30	93.7	-156.0	225.6	196.1	29.51	7.646		
6,600.0	6,577.6	6,594.3	6,584.2	15.6	14.8	105.11	93.7	-152.3	228.5	198.8	29.68	7.699		
6,650.0	6,624.0	6,648.0	6,637.3	15.6	14.9	107.80	93.7	-144.5	231.8	202.0	29.79	7.781		
6,700.0	6,669.1	6,702.7	6,690.6	15.7	15.0	110.37	93.8	-132.5	235.6	205.7	29.85	7.892		
6,750.0	6,712.5	6,758.4	6,743.9	15.7	15.0	112.79	94.0	-116.1	239.7	209.8	29.86	8.026		
6,800.0	6,754.2	6,815.3	6,796.7	15.8	15.1	115.05	94.1	-95.1	244.0	214.2	29.83	8.180		
6,850.0	6,793.7	6,873.2	6,848.7	15.8	15.2	117.15	94.3	-69.6	248.4	218.7	29.77	8.345		
6,900.0	6,831.1	6,932.2	6,899.3	15.9	15.3	119.06	94.5	-39.3	252.9	223.2	29.70	8.514		
6,950.0	6,866.1	6,992.2	6,948.1	16.0	15.4	120.80	94.8	-4.4	257.3	227.6	29.67	8.672		
7,000.0	6,898.4	7,053.2	6,994.5	16.3	15.7	122.35	95.1	35.3	261.5	231.8	29.69	8.808		
7,050.0	6,928.1	7,115.3	7,038.0	16.7	16.0	123.71	95.4	79.4	265.4	235.6	29.82	8.902		
7,100.0	6,954.8	7,178.2	7,078.1	17.1	16.4	124.89	95.8	127.9	269.0	238.9	30.08	8.944		
7,150.0	6,978.6	7,241.9	7,114.2	17.7	16.9	125.87	96.1	180.3	272.1	241.6	30.51	8.920		
7,200.0	6,999.2	7,306.3	7,145.8	18.3	17.6	126.66	96.6	236.4	274.8	243.6	31.15	8.820		
7,250.0	7,016.6	7,371.2	7,172.5	19.0	18.4	127.26	97.0	295.6	276.8	244.8	32.03	8.642		
7,300.0	7,030.6	7,436.6	7,193.8	19.8	19.3	127.67	97.5	357.4	278.2	245.1	33.15	8.393		
7,350.0	7,041.3	7,502.2	7,209.5	20.6	20.4	127.89	97.9	421.1	279.0	244.5	34.51	8.083		
7,400.0	7,048.6	7,568.0	7,219.2	21.5	21.6	127.92	98.4	486.1	279.1	243.0	36.13	7.725		
7,450.0	7,052.4	7,633.7	7,223.0	22.5	22.8	127.76	98.9	551.6	278.5	240.5	37.96	7.337		
7,479.4	7,053.0	7,665.0	7,223.0	23.1	23.4	127.67	99.1	583.0	278.2	239.2	38.98	7.136		
7,500.0	7,053.0	7,685.6	7,223.0	23.5	23.9	127.67	99.3	603.6	278.1	238.5	39.63	7.018		
7,600.0	7,053.0	7,785.6	7,223.0	25.6	26.0	127.68	100.0	703.6	278.1	235.2	42.97	6.473		
7,700.0	7,053.0	7,885.6	7,223.0	27.8	28.2	127.68	100.7	803.5	278.1	231.6	46.51	5.981		
7,800.0	7,053.0	7,985.6	7,223.0	30.1	30.5	127.68	101.5	903.5	278.1	227.9	50.20	5.540		
7,900.0	7,053.0	8,085.6	7,223.0	32.5	32.9	127.68	102.2	1,003.5	278.1	224.1	54.03	5.148		
8,000.0	7,053.0	8,185.6	7,223.0	34.9	35.4	127.68	103.0	1,103.5	278.1	220.2	57.96	4.799		
8,100.0	7,053.0	8,285.6	7,223.0	37.4	37.9	127.68	103.7	1,203.5	278.1	216.2	61.97	4.488		
8,200.0	7,053.0	8,385.6	7,223.0	40.0	40.4	127.68	104.4	1,303.5	278.1	212.1	66.05	4.211		
8,300.0	7,053.0	8,485.6	7,223.0	42.5	43.0	127.68	105.2	1,403.5	278.1	207.9	70.19	3.963		
8,400.0	7,053.0	8,585.6	7,223.0	45.1	45.6	127.68	105.9	1,503.5	278.1	203.8	74.37	3.740		
8,500.0	7,053.0	8,685.6	7,223.0	47.8	48.3	127.68	106.6	1,603.5	278.1	199.5	78.60	3.539		
8,600.0	7,053.0	8,785.6	7,223.0	50.4	50.9	127.68	107.4	1,703.5	278.1	195.3	82.86	3.357		
8,700.0	7,053.0	8,885.6	7,223.0	53.1	53.6	127.68	108.1	1,803.5	278.1	191.0	87.14	3.192		
8,800.0	7,053.0	8,985.6	7,223.0	55.7	56.2	127.68	108.9	1,903.5	278.1	186.7	91.45	3.041		

CC - Min centre to center distance or convergent point, SF - min separation factor, ES - min ellipse separation

<b>Company:</b>	Synergy Resources	<b>Local Co-ordinate Reference:</b>	Well SRC Wiedeman A-5-3NHZ
<b>Project:</b>	Sec.5-T5N-R66W	<b>TVD Reference:</b>	WELL @ 4796.0ft (RKB - 13')
<b>Reference Site:</b>	SRC Wiedeman Pad Sec.5-T5N-R66W	<b>MD Reference:</b>	WELL @ 4796.0ft (RKB - 13')
<b>Site Error:</b>	0.0ft	<b>North Reference:</b>	True
<b>Reference Well:</b>	SRC Wiedeman A-5-3NHZ	<b>Survey Calculation Method:</b>	Minimum Curvature
<b>Well Error:</b>	0.0ft	<b>Output errors are at</b>	2.00 sigma
<b>Reference Wellbore</b>	Wellbore #1	<b>Database:</b>	Landmark
<b>Reference Design:</b>	Plan #1 (6-24-14)	<b>Offset TVD Reference:</b>	Offset Datum

Offset Design		SRC Wiedeman Pad Sec.5-T5N-R66W - SRC Wiedeman A-5-3CHZ - Wellbore #1 - Plan #1 (6-24-14)									Offset Site Error:		0.0 ft
Survey Program: 0-MWD											Offset Well Error:		0.0 ft
Reference		Offset		Semi Major Axis			Distance						Warning
Measured Depth	Vertical Depth	Measured Depth	Vertical Depth	Reference	Offset	Highside Toolface	Offset Wellbore Centre		Between Centres	Between Ellipses	Minimum Separation	Separation Factor	
(ft)	(ft)	(ft)	(ft)	(ft)	(ft)	(°)	+N/-S (ft)	+E/-W (ft)	(ft)	(ft)	(ft)		
8,900.0	7,053.0	9,085.6	7,223.0	58.4	58.9	127.68	109.6	2,003.5	278.1	182.3	95.78	2.904	
9,000.0	7,053.0	9,185.6	7,223.0	61.1	61.6	127.68	110.3	2,103.5	278.1	178.0	100.13	2.778	
9,100.0	7,053.0	9,285.6	7,223.0	63.8	64.3	127.68	111.1	2,203.5	278.1	173.6	104.50	2.661	
9,200.0	7,053.0	9,385.6	7,223.0	66.6	67.1	127.68	111.8	2,303.5	278.1	169.2	108.88	2.554	
9,300.0	7,053.0	9,485.6	7,223.0	69.3	69.8	127.68	112.6	2,403.5	278.1	164.8	113.27	2.455	
9,400.0	7,053.0	9,585.6	7,223.0	72.0	72.5	127.68	113.3	2,503.5	278.1	160.4	117.67	2.363	
9,500.0	7,053.0	9,685.6	7,223.0	74.7	75.3	127.68	114.0	2,603.5	278.1	156.0	122.08	2.278	
9,600.0	7,053.0	9,785.6	7,223.0	77.5	78.0	127.68	114.8	2,703.5	278.1	151.6	126.51	2.198	
9,700.0	7,053.0	9,885.6	7,223.0	80.2	80.7	127.68	115.5	2,803.5	278.1	147.2	130.94	2.124	
9,800.0	7,053.0	9,985.6	7,223.0	83.0	83.5	127.68	116.2	2,903.5	278.1	142.7	135.37	2.054	
9,900.0	7,053.0	10,085.6	7,223.0	85.7	86.2	127.68	117.0	3,003.5	278.1	138.3	139.82	1.989	
10,000.0	7,053.0	10,185.6	7,223.0	88.5	89.0	127.68	117.7	3,103.5	278.1	133.8	144.27	1.928	
10,100.0	7,053.0	10,285.6	7,223.0	91.2	91.8	127.68	118.5	3,203.5	278.1	129.4	148.72	1.870	
10,200.0	7,053.0	10,385.6	7,223.0	94.0	94.5	127.68	119.2	3,303.5	278.1	124.9	153.18	1.815	
10,300.0	7,053.0	10,485.6	7,223.0	96.8	97.3	127.69	119.9	3,403.5	278.1	120.4	157.65	1.764	
10,400.0	7,053.0	10,585.6	7,223.0	99.5	100.1	127.69	120.7	3,503.5	278.1	116.0	162.11	1.715	
10,500.0	7,053.0	10,685.6	7,223.0	102.3	102.8	127.69	121.4	3,603.5	278.1	111.5	166.59	1.669	
10,600.0	7,053.0	10,785.6	7,223.0	105.1	105.6	127.69	122.1	3,703.5	278.1	107.0	171.06	1.626	
10,700.0	7,053.0	10,885.6	7,223.0	107.9	108.4	127.69	122.9	3,803.5	278.1	102.5	175.54	1.584	
10,800.0	7,053.0	10,985.6	7,223.0	110.6	111.2	127.69	123.6	3,903.5	278.1	98.1	180.02	1.545	
10,900.0	7,053.0	11,085.6	7,223.0	113.4	113.9	127.69	124.4	4,003.5	278.1	93.6	184.51	1.507	
11,000.0	7,053.0	11,185.6	7,223.0	116.2	116.7	127.69	125.1	4,103.5	278.1	89.1	188.99	1.471 Level 3	
11,100.0	7,053.0	11,285.6	7,223.0	119.0	119.5	127.69	125.8	4,203.5	278.1	84.6	193.48	1.437 Level 3	
11,200.0	7,053.0	11,385.6	7,223.0	121.7	122.3	127.69	126.6	4,303.5	278.1	80.1	197.97	1.405 Level 3	
11,300.0	7,053.0	11,485.6	7,223.0	124.5	125.1	127.69	127.3	4,403.5	278.1	75.6	202.47	1.373 Level 3	
11,400.0	7,053.0	11,585.6	7,223.0	127.3	127.8	127.69	128.0	4,503.4	278.1	71.1	206.96	1.344 Level 3	
11,500.0	7,053.0	11,685.6	7,223.0	130.1	130.6	127.69	128.8	4,603.4	278.1	66.6	211.46	1.315 Level 3	
11,600.0	7,053.0	11,785.6	7,223.0	132.9	133.4	127.69	129.5	4,703.4	278.1	62.1	215.96	1.288 Level 3	
11,700.0	7,053.0	11,885.6	7,223.0	135.7	136.2	127.69	130.3	4,803.4	278.1	57.6	220.46	1.261 Level 3	
11,800.0	7,053.0	11,985.6	7,223.0	138.4	139.0	127.69	131.0	4,903.4	278.1	53.1	224.96	1.236 Level 2	
11,900.0	7,053.0	12,085.6	7,223.0	141.2	141.8	127.69	131.7	5,003.4	278.0	48.6	229.46	1.212 Level 2	
12,000.0	7,053.0	12,185.6	7,223.0	144.0	144.6	127.69	132.5	5,103.4	278.0	44.1	233.97	1.188 Level 2	
12,100.0	7,053.0	12,285.6	7,223.0	146.8	147.3	127.69	133.2	5,203.4	278.0	39.6	238.47	1.166 Level 2	
12,200.0	7,053.0	12,385.6	7,223.0	149.6	150.1	127.69	134.0	5,303.4	278.0	35.1	242.98	1.144 Level 2	
12,300.0	7,053.0	12,485.6	7,223.0	152.4	152.9	127.69	134.7	5,403.4	278.0	30.6	247.49	1.123 Level 2	
12,400.0	7,053.0	12,585.6	7,223.0	155.2	155.7	127.69	135.4	5,503.4	278.0	26.0	252.00	1.103 Level 2	
12,500.0	7,053.0	12,685.6	7,223.0	158.0	158.5	127.69	136.2	5,603.4	278.0	21.5	256.51	1.084 Level 2	
12,600.0	7,053.0	12,785.6	7,223.0	160.8	161.3	127.69	136.9	5,703.4	278.0	17.0	261.02	1.065 Level 2	
12,700.0	7,053.0	12,885.6	7,223.0	163.6	164.1	127.69	137.6	5,803.4	278.0	12.5	265.53	1.047 Level 2	
12,800.0	7,053.0	12,985.6	7,223.0	166.3	166.9	127.69	138.4	5,903.4	278.0	8.0	270.04	1.030 Level 2	
12,900.0	7,053.0	13,085.6	7,223.0	169.1	169.7	127.69	139.1	6,003.4	278.0	3.5	274.55	1.013 Level 2	
13,000.0	7,053.0	13,185.6	7,223.0	171.9	172.5	127.70	139.9	6,103.4	278.0	-1.0	279.07	0.996 Level 1	
13,100.0	7,053.0	13,285.6	7,223.0	174.7	175.3	127.70	140.6	6,203.4	278.0	-5.6	283.58	0.980 Level 1	
13,200.0	7,053.0	13,385.6	7,223.0	177.5	178.1	127.70	141.3	6,303.4	278.0	-10.1	288.10	0.965 Level 1	
13,300.0	7,053.0	13,485.6	7,223.0	180.3	180.9	127.70	142.1	6,403.4	278.0	-14.6	292.61	0.950 Level 1	
13,400.0	7,053.0	13,585.6	7,223.0	183.1	183.6	127.70	142.8	6,503.4	278.0	-19.1	297.13	0.936 Level 1	
13,500.0	7,053.0	13,685.6	7,223.0	185.9	186.4	127.70	143.5	6,603.4	278.0	-23.6	301.65	0.922 Level 1	
13,600.0	7,053.0	13,785.6	7,223.0	188.7	189.2	127.70	144.3	6,703.4	278.0	-28.2	306.17	0.908 Level 1	
13,700.0	7,053.0	13,885.6	7,223.0	191.5	192.0	127.70	145.0	6,803.4	278.0	-32.7	310.68	0.895 Level 1	
13,800.0	7,053.0	13,985.6	7,223.0	194.3	194.8	127.70	145.8	6,903.4	278.0	-37.2	315.20	0.882 Level 1	
13,900.0	7,053.0	14,085.6	7,223.0	197.1	197.6	127.70	146.5	7,003.4	278.0	-41.7	319.72	0.870 Level 1	
14,000.0	7,053.0	14,185.6	7,223.0	199.9	200.4	127.70	147.2	7,103.4	278.0	-46.2	324.24	0.857 Level 1	

CC - Min centre to center distance or convergent point, SF - min separation factor, ES - min ellipse separation



<b>Company:</b>	Synergy Resources	<b>Local Co-ordinate Reference:</b>	Well SRC Wiedeman A-5-3NHZ
<b>Project:</b>	Sec.5-T5N-R66W	<b>TVD Reference:</b>	WELL @ 4796.0ft (RKB - 13')
<b>Reference Site:</b>	SRC Wiedeman Pad Sec.5-T5N-R66W	<b>MD Reference:</b>	WELL @ 4796.0ft (RKB - 13')
<b>Site Error:</b>	0.0ft	<b>North Reference:</b>	True
<b>Reference Well:</b>	SRC Wiedeman A-5-3NHZ	<b>Survey Calculation Method:</b>	Minimum Curvature
<b>Well Error:</b>	0.0ft	<b>Output errors are at</b>	2.00 sigma
<b>Reference Wellbore</b>	Wellbore #1	<b>Database:</b>	Landmark
<b>Reference Design:</b>	Plan #1 (6-24-14)	<b>Offset TVD Reference:</b>	Offset Datum

Offset Design SRC Wiedeman Pad Sec.5-T5N-R66W - SRC Wiedeman A-5-3CHZ - Wellbore #1 - Plan #1 (6-24-14)													Offset Site Error:	0.0ft
Survey Program: 0-MWD													Offset Well Error:	0.0ft
Reference		Offset		Semi Major Axis			Distance							Warning
Measured Depth (ft)	Vertical Depth (ft)	Measured Depth (ft)	Vertical Depth (ft)	Reference (ft)	Offset (ft)	Highside Toolface (°)	Offset Wellbore Centre +N/-S (ft)	+E/-W (ft)	Between Centres (ft)	Between Ellipses (ft)	Minimum Separation (ft)	Separation Factor		
14,100.0	7,053.0	14,285.6	7,223.0	202.7	203.2	127.70	148.0	7,203.4	278.0	-50.8	328.76	0.846	Level 1	
14,200.0	7,053.0	14,385.6	7,223.0	205.5	206.0	127.70	148.7	7,303.4	278.0	-55.3	333.28	0.834	Level 1	
14,300.0	7,053.0	14,485.6	7,223.0	208.3	208.8	127.70	149.4	7,403.4	278.0	-59.8	337.80	0.823	Level 1	
14,400.0	7,053.0	14,585.6	7,223.0	211.1	211.6	127.70	150.2	7,503.4	278.0	-64.3	342.33	0.812	Level 1	
14,500.0	7,053.0	14,685.6	7,223.0	213.9	214.4	127.70	150.9	7,603.4	278.0	-68.9	346.85	0.801	Level 1	
14,600.0	7,053.0	14,785.6	7,223.0	216.7	217.2	127.70	151.7	7,703.4	278.0	-73.4	351.37	0.791	Level 1	
14,700.0	7,053.0	14,885.6	7,223.0	219.5	220.0	127.70	152.4	7,803.4	278.0	-77.9	355.89	0.781	Level 1	
14,800.0	7,053.0	14,985.6	7,223.0	222.3	222.8	127.70	153.1	7,903.4	278.0	-82.4	360.41	0.771	Level 1	
14,900.0	7,053.0	15,085.6	7,223.0	225.1	225.6	127.70	153.9	8,003.4	278.0	-87.0	364.94	0.762	Level 1	
15,000.0	7,053.0	15,185.6	7,223.0	227.9	228.4	127.70	154.6	8,103.3	278.0	-91.5	369.46	0.752	Level 1	
15,100.0	7,053.0	15,285.6	7,223.0	230.7	231.2	127.70	155.4	8,203.3	278.0	-96.0	373.98	0.743	Level 1	
15,200.0	7,053.0	15,385.6	7,223.0	233.5	234.0	127.70	156.1	8,303.3	278.0	-100.5	378.51	0.734	Level 1	
15,300.0	7,053.0	15,485.6	7,223.0	236.3	236.8	127.70	156.8	8,403.3	278.0	-105.1	383.03	0.726	Level 1	
15,400.0	7,053.0	15,585.6	7,223.0	239.1	239.6	127.70	157.6	8,503.3	278.0	-109.6	387.56	0.717	Level 1	
15,500.0	7,053.0	15,685.6	7,223.0	241.9	242.4	127.70	158.3	8,603.3	278.0	-114.1	392.08	0.709	Level 1	
15,600.0	7,053.0	15,785.6	7,223.0	244.7	245.2	127.70	159.0	8,703.3	278.0	-118.6	396.61	0.701	Level 1	
15,700.0	7,053.0	15,885.6	7,223.0	247.5	248.0	127.71	159.8	8,803.3	278.0	-123.2	401.13	0.693	Level 1	
15,800.0	7,053.0	15,985.6	7,223.0	250.3	250.8	127.71	160.5	8,903.3	278.0	-127.7	405.66	0.685	Level 1	
15,900.0	7,053.0	16,085.6	7,223.0	253.1	253.6	127.71	161.3	9,003.3	278.0	-132.2	410.18	0.678	Level 1	
16,000.0	7,053.0	16,185.6	7,223.0	255.9	256.4	127.71	162.0	9,103.3	278.0	-136.8	414.71	0.670	Level 1	
16,100.0	7,053.0	16,285.6	7,223.0	258.7	259.2	127.71	162.7	9,203.3	278.0	-141.3	419.23	0.663	Level 1	
16,200.0	7,053.0	16,385.6	7,223.0	261.5	262.0	127.71	163.5	9,303.3	277.9	-145.8	423.76	0.656	Level 1	
16,300.0	7,053.0	16,485.6	7,223.0	264.3	264.8	127.71	164.2	9,403.3	277.9	-150.3	428.29	0.649	Level 1	
16,400.0	7,053.0	16,585.6	7,223.0	267.1	267.6	127.71	164.9	9,503.3	277.9	-154.9	432.81	0.642	Level 1	
16,500.0	7,053.0	16,685.6	7,223.0	269.9	270.4	127.71	165.7	9,603.3	277.9	-159.4	437.34	0.636	Level 1	
16,600.0	7,053.0	16,785.6	7,223.0	272.7	273.2	127.71	166.4	9,703.3	277.9	-163.9	441.87	0.629	Level 1	
16,700.0	7,053.0	16,885.6	7,223.0	275.5	276.0	127.71	167.2	9,803.3	277.9	-168.5	446.39	0.623	Level 1	
16,800.0	7,053.0	16,985.6	7,223.0	278.3	278.8	127.71	167.9	9,903.3	277.9	-173.0	450.92	0.616	Level 1	
16,831.5	7,053.0	17,017.1	7,223.0	279.2	279.7	127.71	168.1	9,934.8	277.9	-174.4	452.35	0.614	Level 1, ES, SF	
16,856.8	7,053.0	17,021.1	7,223.0	279.9	279.8	127.71	168.2	9,938.8	278.7	-174.3	453.01	0.615	Level 1	

Reference Depths are relative to WELL @ 4796.0ft (RKB - 13')	Coordinates are relative to: SRC Wiedeman A-5-3NHZ
Offset Depths are relative to Offset Datum	Coordinate System is US State Plane 1983, Colorado Northern Zone
Central Meridian is -105.500000 °	Grid Convergence at Surface is: 0.45°



<b>Company:</b>	Synergy Resources	<b>Local Co-ordinate Reference:</b>	Well SRC Wiedeman A-5-3NHZ
<b>Project:</b>	Sec.5-T5N-R66W	<b>TVD Reference:</b>	WELL @ 4796.0ft (RKB - 13')
<b>Reference Site:</b>	SRC Wiedeman Pad Sec.5-T5N-R66W	<b>MD Reference:</b>	WELL @ 4796.0ft (RKB - 13')
<b>Site Error:</b>	0.0ft	<b>North Reference:</b>	True
<b>Reference Well:</b>	SRC Wiedeman A-5-3NHZ	<b>Survey Calculation Method:</b>	Minimum Curvature
<b>Well Error:</b>	0.0ft	<b>Output errors are at</b>	2.00 sigma
<b>Reference Wellbore</b>	Wellbore #1	<b>Database:</b>	Landmark
<b>Reference Design:</b>	Plan #1 (6-24-14)	<b>Offset TVD Reference:</b>	Offset Datum

Reference Depths are relative to WELL @ 4796.0ft (RKB - 13')  
Offset Depths are relative to Offset Datum  
Central Meridian is -105.500000 °

Coordinates are relative to: SRC Wiedeman A-5-3NHZ  
Coordinate System is US State Plane 1983, Colorado Northern Zone  
Grid Convergence at Surface is: 0.45°

