

# Synergy Resources

Well Name: **SRC Wiedeman 22-5-4CHZ**

Surface Location: SRC Wiedeman Pad Sec.5-T5N-R66W  
North American Datum 1983 , US State Plane 1983 , Colorado Northern Zone

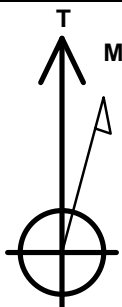
Ground Elevation: 4783.0

+N/-S	+E/-W	Northing	Easting	Latitude	Longitude	Slot
0.0	0.0	1401387.59	3194375.37	40.433110	-104.801741	

RKB - 13' WELL @ 4796.0ft (RKB - 13')

## WELLBORE TARGET DETAILS

Name	TVD	+N/-S	+E/-W	Shape
SHL 1482'FNL & 2438'FEL, Sec.5		0.0	0.0	Point
BHL 2330'FNL & 2198'FWL, Sec. 4	7224.0	-779.6	4580.7	Point



Azimuths to True North  
Magnetic North: 8.48°

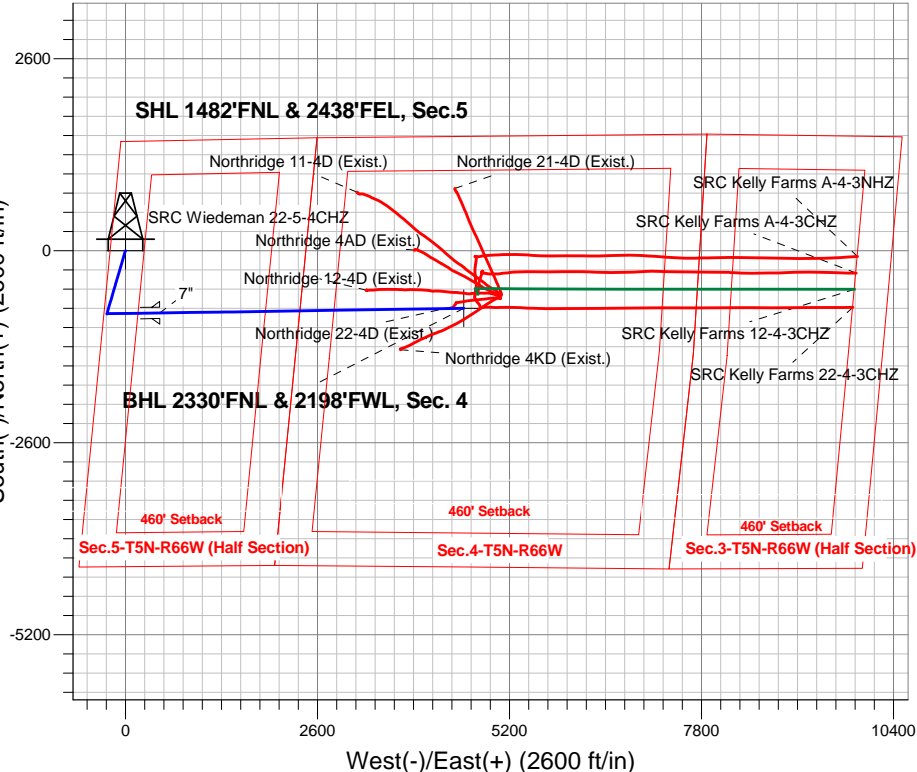
Magnetic Field  
Strength: 52825.8snT  
Dip Angle: 66.97°  
Date: 6/26/2014  
Model: IGRF2010

SRC Wiedeman Pad Sec.5-T5N-R66W  
SRC Wiedeman 22-5-4CHZ  
Plan #1 (6-24-14)  
7:26, June 26 2014

## ANNOTATIONS

TVD	MD	Annotation
800.0	800.0	KOP #1
6507.8	6583.7	KOP #2
7224.0	7708.7	End of Build

South(-)/North(+) (2600 ft/in)

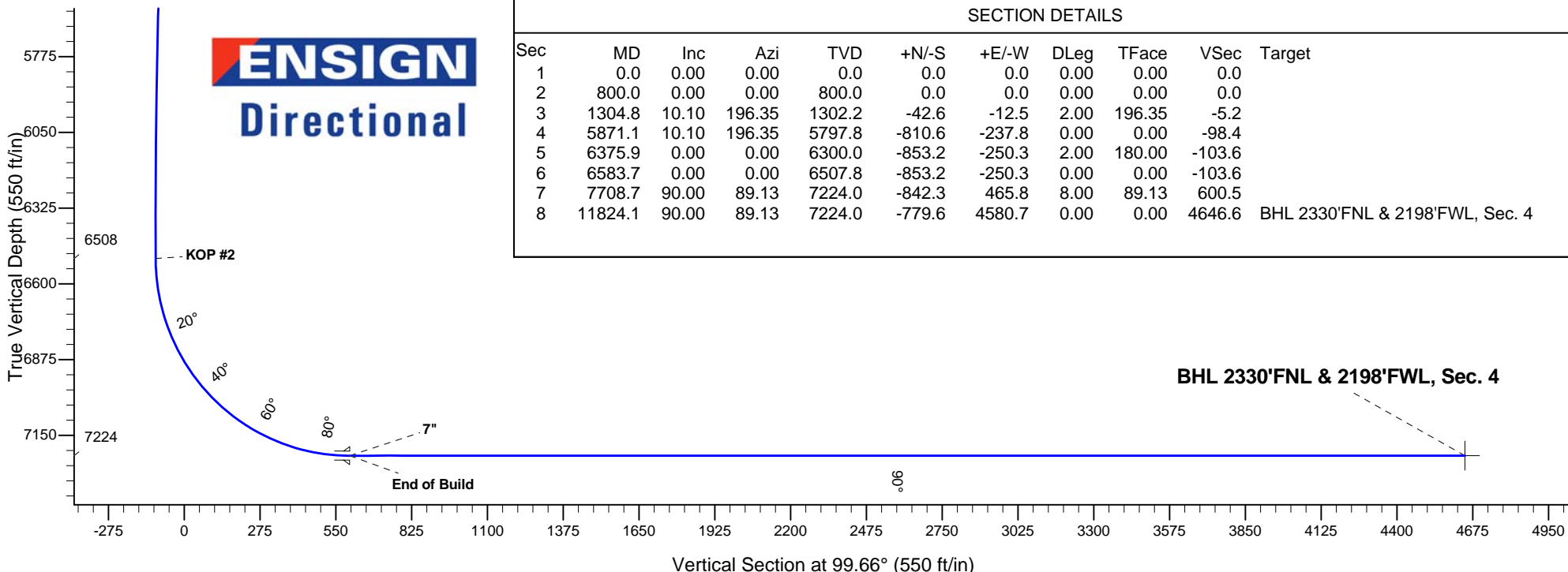


## SECTION DETAILS

Sec	MD	Inc	Azi	TVD	+N/-S	+E/-W	DLeg	TFace	VSec	Target
1	0.0	0.00	0.00	0.0	0.0	0.0	0.00	0.00	0.0	
2	800.0	0.00	0.00	800.0	0.0	0.0	0.00	0.00	0.0	
3	1304.8	10.10	196.35	1302.2	-42.6	-12.5	2.00	196.35	-5.2	
4	5871.1	10.10	196.35	5797.8	-810.6	-237.8	0.00	0.00	-98.4	
5	6375.9	0.00	0.00	6300.0	-853.2	-250.3	2.00	180.00	-103.6	
6	6583.7	0.00	0.00	6507.8	-853.2	-250.3	0.00	0.00	-103.6	
7	7708.7	90.00	89.13	7224.0	-842.3	465.8	8.00	89.13	600.5	
8	11824.1	90.00	89.13	7224.0	-779.6	4580.7	0.00	0.00	4646.6	BHL 2330'FNL & 2198'FWL, Sec. 4

**BHL 2330'FNL & 2198'FWL, Sec. 4**

**ENSIGN**  
Directional





## **Synergy Resources**

**Sec.5-T5N-R66W**

**SRC Wiedeman Pad Sec.5-T5N-R66W**

**SRC Wiedeman 22-5-4CHZ**

**Wellbore #1**

**Plan: Plan #1 (6-24-14)**

## **Standard Planning Report**

**26 June, 2014**



<b>Database:</b>	Landmark	<b>Local Co-ordinate Reference:</b>	Well SRC Wiedeman 22-5-4CHZ
<b>Company:</b>	Synergy Resources	<b>TVD Reference:</b>	WELL @ 4796.0ft (RKB - 13')
<b>Project:</b>	Sec.5-T5N-R66W	<b>MD Reference:</b>	WELL @ 4796.0ft (RKB - 13')
<b>Site:</b>	SRC Wiedeman Pad Sec.5-T5N-R66W	<b>North Reference:</b>	True
<b>Well:</b>	SRC Wiedeman 22-5-4CHZ	<b>Survey Calculation Method:</b>	Minimum Curvature
<b>Wellbore:</b>	Wellbore #1		
<b>Design:</b>	Plan #1 (6-24-14)		

<b>Project</b>	Sec.5-T5N-R66W		
<b>Map System:</b>	US State Plane 1983	<b>System Datum:</b>	Mean Sea Level
<b>Geo Datum:</b>	North American Datum 1983		Using Well Reference Point
<b>Map Zone:</b>	Colorado Northern Zone		Using geodetic scale factor

Site						SRC Wiedeman Pad Sec.5-T5N-R66W											
<b>Site Position:</b>						<b>Northing:</b>			1,401,391.96 ft			<b>Latitude:</b>			40.433123		
<b>From:</b>			Lat/Long			<b>Easting:</b>			3,194,327.74 ft			<b>Longitude:</b>			-104.801912		
<b>Position Uncertainty:</b>			0.0 ft			<b>Slot Radius:</b>			"			<b>Grid Convergence:</b>			0.45 °		

Well	SRC Wiedeman 22-5-4CHZ					
Well Position	+N/-S	-4.7 ft	Northing:	1,401,387.59 ft	Latitude:	40.433110
	+E/-W	47.6 ft	Easting:	3,194,375.37 ft	Longitude:	-104.801741
Position Uncertainty		0.0 ft	Wellhead Elevation:	ft	Ground Level:	4,783.0 ft

<b>Wellbore</b>	Wellbore #1				
<b>Magnetics</b>	<b>Model Name</b>	<b>Sample Date</b>	<b>Declination (°)</b>	<b>Dip Angle (°)</b>	<b>Field Strength (nT)</b>
	IGRF2010	6/26/2014	8.48	66.97	52,826

<b>Design</b>	Plan #1 (6-24-14)			
<b>Audit Notes:</b>				
<b>Version:</b>	<b>Phase:</b>	PROTOTYPE	<b>Tie On Depth:</b>	0.0
<b>Vertical Section:</b>	<b>Depth From (TVD) (ft)</b>	<b>+N/-S (ft)</b>	<b>+E/-W (ft)</b>	<b>Direction (°)</b>
	0.0	0.0	0.0	99.66

<b>Plan Sections</b>										
Measured Depth (ft)	Inclination (°)	Azimuth (°)	Vertical Depth (ft)	+N/-S (ft)	+E/-W (ft)	Dogleg Rate (°/100ft)	Build Rate (°/100ft)	Turn Rate (°/100ft)	TFO (°)	Target
0.0	0.00	0.00	0.0	0.0	0.0	0.00	0.00	0.00	0.00	
800.0	0.00	0.00	800.0	0.0	0.0	0.00	0.00	0.00	0.00	
1,304.8	10.10	196.35	1,302.2	-42.6	-12.5	2.00	2.00	0.00	196.35	
5,871.1	10.10	196.35	5,797.8	-810.6	-237.8	0.00	0.00	0.00	0.00	
6,375.9	0.00	0.00	6,300.0	-853.2	-250.3	2.00	-2.00	0.00	180.00	
6,583.7	0.00	0.00	6,507.8	-853.2	-250.3	0.00	0.00	0.00	0.00	
7,708.7	90.00	89.13	7,224.0	-842.3	465.8	8.00	8.00	0.00	89.13	
11,824.1	90.00	89.13	7,224.0	-779.6	4,580.7	0.00	0.00	0.00	0.00	BHL 2330'FNL & 21

<b>Database:</b>	Landmark	<b>Local Co-ordinate Reference:</b>	Well SRC Wiedeman 22-5-4CHZ
<b>Company:</b>	Synergy Resources	<b>TVD Reference:</b>	WELL @ 4796.0ft (RKB - 13')
<b>Project:</b>	Sec.5-T5N-R66W	<b>MD Reference:</b>	WELL @ 4796.0ft (RKB - 13')
<b>Site:</b>	SRC Wiedeman Pad Sec.5-T5N-R66W	<b>North Reference:</b>	True
<b>Well:</b>	SRC Wiedeman 22-5-4CHZ	<b>Survey Calculation Method:</b>	Minimum Curvature
<b>Wellbore:</b>	Wellbore #1		
<b>Design:</b>	Plan #1 (6-24-14)		

Planned Survey									
Measured Depth (ft)	Inclination (°)	Azimuth (°)	Vertical Depth (ft)	+N/-S (ft)	+E/-W (ft)	Vertical Section (ft)	Dogleg Rate (°/100ft)	Build Rate (°/100ft)	Turn Rate (°/100ft)
0.0	0.00	0.00	0.0	0.0	0.0	0.0	0.00	0.00	0.00
1.0	0.00	0.00	1.0	0.0	0.0	0.0	0.00	0.00	0.00
<b>SHL 1482'FNL &amp; 2438'FEL, Sec.5</b>									
100.0	0.00	0.00	100.0	0.0	0.0	0.0	0.00	0.00	0.00
200.0	0.00	0.00	200.0	0.0	0.0	0.0	0.00	0.00	0.00
300.0	0.00	0.00	300.0	0.0	0.0	0.0	0.00	0.00	0.00
400.0	0.00	0.00	400.0	0.0	0.0	0.0	0.00	0.00	0.00
500.0	0.00	0.00	500.0	0.0	0.0	0.0	0.00	0.00	0.00
600.0	0.00	0.00	600.0	0.0	0.0	0.0	0.00	0.00	0.00
700.0	0.00	0.00	700.0	0.0	0.0	0.0	0.00	0.00	0.00
800.0	0.00	0.00	800.0	0.0	0.0	0.0	0.00	0.00	0.00
<b>KOP #1</b>									
900.0	2.00	196.35	900.0	-1.7	-0.5	-0.2	2.00	2.00	0.00
1,000.0	4.00	196.35	999.8	-6.7	-2.0	-0.8	2.00	2.00	0.00
1,100.0	6.00	196.35	1,099.5	-15.1	-4.4	-1.8	2.00	2.00	0.00
1,200.0	8.00	196.35	1,198.7	-26.8	-7.8	-3.2	2.00	2.00	0.00
1,300.0	10.00	196.35	1,297.5	-41.8	-12.3	-5.1	2.00	2.00	0.00
1,304.8	10.10	196.35	1,302.2	-42.6	-12.5	-5.2	2.00	2.00	0.00
1,400.0	10.10	196.35	1,395.9	-58.6	-17.2	-7.1	0.00	0.00	0.00
1,500.0	10.10	196.35	1,494.4	-75.4	-22.1	-9.2	0.00	0.00	0.00
1,600.0	10.10	196.35	1,592.8	-92.2	-27.1	-11.2	0.00	0.00	0.00
1,700.0	10.10	196.35	1,691.3	-109.0	-32.0	-13.2	0.00	0.00	0.00
1,800.0	10.10	196.35	1,789.7	-125.9	-36.9	-15.3	0.00	0.00	0.00
1,900.0	10.10	196.35	1,888.2	-142.7	-41.9	-17.3	0.00	0.00	0.00
2,000.0	10.10	196.35	1,986.6	-159.5	-46.8	-19.4	0.00	0.00	0.00
2,100.0	10.10	196.35	2,085.1	-176.3	-51.7	-21.4	0.00	0.00	0.00
2,200.0	10.10	196.35	2,183.5	-193.1	-56.7	-23.5	0.00	0.00	0.00
2,300.0	10.10	196.35	2,282.0	-210.0	-61.6	-25.5	0.00	0.00	0.00
2,400.0	10.10	196.35	2,380.4	-226.8	-66.5	-27.5	0.00	0.00	0.00
2,500.0	10.10	196.35	2,478.9	-243.6	-71.5	-29.6	0.00	0.00	0.00
2,600.0	10.10	196.35	2,577.3	-260.4	-76.4	-31.6	0.00	0.00	0.00
2,700.0	10.10	196.35	2,675.8	-277.2	-81.3	-33.7	0.00	0.00	0.00
2,800.0	10.10	196.35	2,774.2	-294.1	-86.3	-35.7	0.00	0.00	0.00
2,900.0	10.10	196.35	2,872.7	-310.9	-91.2	-37.8	0.00	0.00	0.00
3,000.0	10.10	196.35	2,971.1	-327.7	-96.1	-39.8	0.00	0.00	0.00
3,100.0	10.10	196.35	3,069.6	-344.5	-101.1	-41.8	0.00	0.00	0.00
3,200.0	10.10	196.35	3,168.0	-361.3	-106.0	-43.9	0.00	0.00	0.00
3,300.0	10.10	196.35	3,266.5	-378.2	-110.9	-45.9	0.00	0.00	0.00
3,400.0	10.10	196.35	3,365.0	-395.0	-115.9	-48.0	0.00	0.00	0.00
3,500.0	10.10	196.35	3,463.4	-411.8	-120.8	-50.0	0.00	0.00	0.00
3,600.0	10.10	196.35	3,561.9	-428.6	-125.7	-52.1	0.00	0.00	0.00
3,700.0	10.10	196.35	3,660.3	-445.4	-130.7	-54.1	0.00	0.00	0.00
3,800.0	10.10	196.35	3,758.8	-462.3	-135.6	-56.1	0.00	0.00	0.00
3,900.0	10.10	196.35	3,857.2	-479.1	-140.5	-58.2	0.00	0.00	0.00
4,000.0	10.10	196.35	3,955.7	-495.9	-145.5	-60.2	0.00	0.00	0.00
4,100.0	10.10	196.35	4,054.1	-512.7	-150.4	-62.3	0.00	0.00	0.00
4,200.0	10.10	196.35	4,152.6	-529.5	-155.4	-64.3	0.00	0.00	0.00
4,300.0	10.10	196.35	4,251.0	-546.4	-160.3	-66.4	0.00	0.00	0.00
4,400.0	10.10	196.35	4,349.5	-563.2	-165.2	-68.4	0.00	0.00	0.00
4,500.0	10.10	196.35	4,447.9	-580.0	-170.2	-70.4	0.00	0.00	0.00
4,600.0	10.10	196.35	4,546.4	-596.8	-175.1	-72.5	0.00	0.00	0.00
4,700.0	10.10	196.35	4,644.8	-613.6	-180.0	-74.5	0.00	0.00	0.00
4,800.0	10.10	196.35	4,743.3	-630.5	-185.0	-76.6	0.00	0.00	0.00
4,900.0	10.10	196.35	4,841.7	-647.3	-189.9	-78.6	0.00	0.00	0.00

<b>Database:</b>	Landmark	<b>Local Co-ordinate Reference:</b>	Well SRC Wiedeman 22-5-4CHZ
<b>Company:</b>	Synergy Resources	<b>TVD Reference:</b>	WELL @ 4796.0ft (RKB - 13')
<b>Project:</b>	Sec.5-T5N-R66W	<b>MD Reference:</b>	WELL @ 4796.0ft (RKB - 13')
<b>Site:</b>	SRC Wiedeman Pad Sec.5-T5N-R66W	<b>North Reference:</b>	True
<b>Well:</b>	SRC Wiedeman 22-5-4CHZ	<b>Survey Calculation Method:</b>	Minimum Curvature
<b>Wellbore:</b>	Wellbore #1		
<b>Design:</b>	Plan #1 (6-24-14)		

Planned Survey									
Measured Depth (ft)	Inclination (°)	Azimuth (°)	Vertical Depth (ft)	+N/-S (ft)	+E/-W (ft)	Vertical Section (ft)	Dogleg Rate (°/100ft)	Build Rate (°/100ft)	Turn Rate (°/100ft)
5,000.0	10.10	196.35	4,940.2	-664.1	-194.8	-80.6	0.00	0.00	0.00
5,100.0	10.10	196.35	5,038.6	-680.9	-199.8	-82.7	0.00	0.00	0.00
5,200.0	10.10	196.35	5,137.1	-697.7	-204.7	-84.7	0.00	0.00	0.00
5,300.0	10.10	196.35	5,235.5	-714.6	-209.6	-86.8	0.00	0.00	0.00
5,400.0	10.10	196.35	5,334.0	-731.4	-214.6	-88.8	0.00	0.00	0.00
5,500.0	10.10	196.35	5,432.4	-748.2	-219.5	-90.9	0.00	0.00	0.00
5,600.0	10.10	196.35	5,530.9	-765.0	-224.4	-92.9	0.00	0.00	0.00
5,700.0	10.10	196.35	5,629.3	-781.9	-229.4	-94.9	0.00	0.00	0.00
5,800.0	10.10	196.35	5,727.8	-798.7	-234.3	-97.0	0.00	0.00	0.00
5,871.1	10.10	196.35	5,797.8	-810.6	-237.8	-98.4	0.00	0.00	0.00
5,900.0	9.52	196.35	5,826.3	-815.4	-239.2	-99.0	2.00	-2.00	0.00
6,000.0	7.52	196.35	5,925.2	-829.6	-243.4	-100.7	2.00	-2.00	0.00
6,100.0	5.52	196.35	6,024.5	-840.5	-246.6	-102.1	2.00	-2.00	0.00
6,200.0	3.52	196.35	6,124.2	-848.0	-248.8	-103.0	2.00	-2.00	0.00
6,300.0	1.52	196.35	6,224.1	-852.2	-250.0	-103.5	2.00	-2.00	0.00
6,375.9	0.00	0.00	6,300.0	-853.2	-250.3	-103.6	2.00	-2.00	0.00
6,400.0	0.00	0.00	6,324.1	-853.2	-250.3	-103.6	0.00	0.00	0.00
6,500.0	0.00	0.00	6,424.1	-853.2	-250.3	-103.6	0.00	0.00	0.00
6,583.7	0.00	0.00	6,507.8	-853.2	-250.3	-103.6	0.00	0.00	0.00
<b>KOP #2</b>									
6,600.0	1.30	89.13	6,524.1	-853.2	-250.1	-103.4	7.99	7.99	0.00
6,700.0	9.30	89.13	6,623.6	-853.1	-240.9	-94.4	8.00	8.00	0.00
6,800.0	17.30	89.13	6,720.8	-852.7	-217.9	-71.7	8.00	8.00	0.00
6,900.0	25.30	89.13	6,813.9	-852.2	-181.6	-36.1	8.00	8.00	0.00
7,000.0	33.30	89.13	6,901.0	-851.4	-132.7	12.0	8.00	8.00	0.00
7,100.0	41.30	89.13	6,980.5	-850.5	-72.2	71.5	8.00	8.00	0.00
7,200.0	49.30	89.13	7,050.8	-849.4	-1.1	141.4	8.00	8.00	0.00
7,300.0	57.30	89.13	7,110.5	-848.2	79.0	220.1	8.00	8.00	0.00
7,400.0	65.30	89.13	7,158.5	-846.8	166.6	306.3	8.00	8.00	0.00
7,500.0	73.30	89.13	7,193.8	-845.4	260.1	398.2	8.00	8.00	0.00
7,600.0	81.30	89.13	7,215.8	-843.9	357.5	494.0	8.00	8.00	0.00
7,700.0	89.30	89.13	7,223.9	-842.4	457.1	591.9	8.00	8.00	0.00
7,708.7	90.00	89.13	7,224.0	-842.3	465.8	600.5	8.00	8.00	0.00
<b>End of Build - 7"</b>									
7,800.0	90.00	89.13	7,224.0	-840.9	557.1	690.3	0.00	0.00	0.00
7,900.0	90.00	89.13	7,224.0	-839.4	657.1	788.6	0.00	0.00	0.00
8,000.0	90.00	89.13	7,224.0	-837.8	757.1	886.9	0.00	0.00	0.00
8,100.0	90.00	89.13	7,224.0	-836.3	857.0	985.2	0.00	0.00	0.00
8,200.0	90.00	89.13	7,224.0	-834.8	957.0	1,083.5	0.00	0.00	0.00
8,300.0	90.00	89.13	7,224.0	-833.3	1,057.0	1,181.8	0.00	0.00	0.00
8,400.0	90.00	89.13	7,224.0	-831.7	1,157.0	1,280.2	0.00	0.00	0.00
8,500.0	90.00	89.13	7,224.0	-830.2	1,257.0	1,378.5	0.00	0.00	0.00
8,600.0	90.00	89.13	7,224.0	-828.7	1,357.0	1,476.8	0.00	0.00	0.00
8,700.0	90.00	89.13	7,224.0	-827.2	1,457.0	1,575.1	0.00	0.00	0.00
8,800.0	90.00	89.13	7,224.0	-825.7	1,557.0	1,673.4	0.00	0.00	0.00
8,900.0	90.00	89.13	7,224.0	-824.1	1,657.0	1,771.7	0.00	0.00	0.00
9,000.0	90.00	89.13	7,224.0	-822.6	1,756.9	1,870.0	0.00	0.00	0.00
9,100.0	90.00	89.13	7,224.0	-821.1	1,856.9	1,968.4	0.00	0.00	0.00
9,200.0	90.00	89.13	7,224.0	-819.6	1,956.9	2,066.7	0.00	0.00	0.00
9,300.0	90.00	89.13	7,224.0	-818.0	2,056.9	2,165.0	0.00	0.00	0.00
9,400.0	90.00	89.13	7,224.0	-816.5	2,156.9	2,263.3	0.00	0.00	0.00
9,500.0	90.00	89.13	7,224.0	-815.0	2,256.9	2,361.6	0.00	0.00	0.00
9,600.0	90.00	89.13	7,224.0	-813.5	2,356.9	2,459.9	0.00	0.00	0.00
9,700.0	90.00	89.13	7,224.0	-811.9	2,456.9	2,558.3	0.00	0.00	0.00

**Database:** Landmark  
**Company:** Synergy Resources  
**Project:** Sec.5-T5N-R66W  
**Site:** SRC Wiedeman Pad Sec.5-T5N-R66W  
**Well:** SRC Wiedeman 22-5-4CHZ  
**Wellbore:** Wellbore #1  
**Design:** Plan #1 (6-24-14)

**Local Co-ordinate Reference:** Well SRC Wiedeman 22-5-4CHZ  
**TVD Reference:** WELL @ 4796.0ft (RKB - 13')  
**MD Reference:** WELL @ 4796.0ft (RKB - 13')  
**North Reference:** True  
**Survey Calculation Method:** Minimum Curvature

**Planned Survey**

Measured Depth (ft)	Inclination (°)	Azimuth (°)	Vertical Depth (ft)	+N/-S (ft)	+E/-W (ft)	Vertical Section (ft)	Dogleg Rate (°/100ft)	Build Rate (°/100ft)	Turn Rate (°/100ft)
9,800.0	90.00	89.13	7,224.0	-810.4	2,556.8	2,656.6	0.00	0.00	0.00
9,900.0	90.00	89.13	7,224.0	-808.9	2,656.8	2,754.9	0.00	0.00	0.00
10,000.0	90.00	89.13	7,224.0	-807.4	2,756.8	2,853.2	0.00	0.00	0.00
10,100.0	90.00	89.13	7,224.0	-805.8	2,856.8	2,951.5	0.00	0.00	0.00
10,200.0	90.00	89.13	7,224.0	-804.3	2,956.8	3,049.8	0.00	0.00	0.00
10,300.0	90.00	89.13	7,224.0	-802.8	3,056.8	3,148.1	0.00	0.00	0.00
10,400.0	90.00	89.13	7,224.0	-801.3	3,156.8	3,246.5	0.00	0.00	0.00
10,500.0	90.00	89.13	7,224.0	-799.7	3,256.8	3,344.8	0.00	0.00	0.00
10,600.0	90.00	89.13	7,224.0	-798.2	3,356.8	3,443.1	0.00	0.00	0.00
10,700.0	90.00	89.13	7,224.0	-796.7	3,456.7	3,541.4	0.00	0.00	0.00
10,800.0	90.00	89.13	7,224.0	-795.2	3,556.7	3,639.7	0.00	0.00	0.00
10,900.0	90.00	89.13	7,224.0	-793.6	3,656.7	3,738.0	0.00	0.00	0.00
11,000.0	90.00	89.13	7,224.0	-792.1	3,756.7	3,836.4	0.00	0.00	0.00
11,100.0	90.00	89.13	7,224.0	-790.6	3,856.7	3,934.7	0.00	0.00	0.00
11,200.0	90.00	89.13	7,224.0	-789.1	3,956.7	4,033.0	0.00	0.00	0.00
11,300.0	90.00	89.13	7,224.0	-787.6	4,056.7	4,131.3	0.00	0.00	0.00
11,400.0	90.00	89.13	7,224.0	-786.0	4,156.7	4,229.6	0.00	0.00	0.00
11,500.0	90.00	89.13	7,224.0	-784.5	4,256.6	4,327.9	0.00	0.00	0.00
11,600.0	90.00	89.13	7,224.0	-783.0	4,356.6	4,426.2	0.00	0.00	0.00
11,700.0	90.00	89.13	7,224.0	-781.5	4,456.6	4,524.6	0.00	0.00	0.00
11,800.0	90.00	89.13	7,224.0	-779.9	4,556.6	4,622.9	0.00	0.00	0.00
11,824.1	90.00	89.13	7,224.0	-779.6	4,580.7	4,646.6	0.00	0.00	0.00
BHL 2330'FNL & 2198'FWL, Sec. 4									

**Targets**
**Target Name**

- hit/miss target - Shape	Dip Angle (°)	Dip Dir. (°)	TVD (ft)	+N/-S (ft)	+E/-W (ft)	Northing (ft)	Easting (ft)	Latitude	Longitude
SHL 1482'FNL & 2438'FWL - plan hits target center - Point	0.00	0.00	1.0	0.0	0.0	1,401,387.60	3,194,375.37	40.433110	-104.801741
BHL 2330'FNL & 2198'FWL - plan hits target center - Point	0.00	0.00	7,224.0	-779.6	4,580.7	1,400,644.15	3,198,961.89	40.430969	-104.785287

**Casing Points**

Measured Depth (ft)	Vertical Depth (ft)	Name	Casing Diameter (")	Hole Diameter (")
7,708.7	7,224.0	7"	7	7-1/2

**Plan Annotations**

Measured Depth (ft)	Vertical Depth (ft)	Local Coordinates +N/-S (ft)	+E/-W (ft)	Comment
800.0	800.0	0.0	0.0	KOP #1
6,583.7	6,507.8	-853.3	-250.3	KOP #2
7,708.7	7,224.0	-842.3	465.8	End of Build

## **Synergy Resources**

**Sec.5-T5N-R66W**

**SRC Wiedeman Pad Sec.5-T5N-R66W**

**SRC Wiedeman 22-5-4CHZ**

**Wellbore #1**

**Plan #1 (6-24-14)**

## **Anticollision Report**

**26 June, 2014**

<b>Company:</b>	Synergy Resources	<b>Local Co-ordinate Reference:</b>	Well SRC Wiedeman 22-5-4CHZ
<b>Project:</b>	Sec.5-T5N-R66W	<b>TVD Reference:</b>	WELL @ 4796.0ft (RKB - 13')
<b>Reference Site:</b>	SRC Wiedeman Pad Sec.5-T5N-R66W	<b>MD Reference:</b>	WELL @ 4796.0ft (RKB - 13')
<b>Site Error:</b>	0.0ft	<b>North Reference:</b>	True
<b>Reference Well:</b>	SRC Wiedeman 22-5-4CHZ	<b>Survey Calculation Method:</b>	Minimum Curvature
<b>Well Error:</b>	0.0ft	<b>Output errors are at</b>	2.00 sigma
<b>Reference Wellbore</b>	Wellbore #1	<b>Database:</b>	Landmark
<b>Reference Design:</b>	Plan #1 (6-24-14)	<b>Offset TVD Reference:</b>	Offset Datum

<b>Reference</b>	Plan #1 (6-24-14)		
<b>Filter type:</b>	NO GLOBAL FILTER: Using user defined selection & filtering criteria		
<b>Interpolation Method:</b>	Stations	<b>Error Model:</b>	ISCWSA
<b>Depth Range:</b>	Unlimited	<b>Scan Method:</b>	Closest Approach 3D
<b>Results Limited by:</b>	Maximum center-center distance of 1,000.0ft	<b>Error Surface:</b>	Elliptical Conic
<b>Warning Levels Evaluated at:</b>	2.00 Sigma		

<b>Survey Tool Program</b>	<b>Date</b> 6/26/2014			
<b>From (ft)</b>	<b>To (ft)</b>	<b>Survey (Wellbore)</b>	<b>Tool Name</b>	<b>Description</b>
0.0	11,824.1	Plan #1 (6-24-14) (Wellbore #1)	MWD	MWD - Standard

Summary						
Site Name	Reference Measured Depth (ft)	Offset Measured Depth (ft)	Distance Between Centres (ft)	Distance Between Ellipses (ft)	Separation Factor	Warning
Offset Well - Wellbore - Design						
Northridge Pad Sec.4-T5N-R66W						
Northridge 11-4D (Exist.) - Wellbore #1 - Wellbore #1						Out of range
Northridge 12-4D (Exist.) - Wellbore #1 - Wellbore #1	10,512.2	7,490.9	268.5	135.7	2.022	CC, ES, SF
Northridge 21-4D (Exist.) - Wellbore #1 - Wellbore #1						Out of range
Northridge 22-4D (Exist.) - Wellbore #1 - Wellbore #1	11,708.2	7,251.9	49.5	-97.2	0.337	Level 1, CC, ES, SF
Northridge 4AD (Exist.) - Wellbore #1 - Wellbore #1	11,165.8	7,362.6	798.2	658.5	5.716	CC
Northridge 4AD (Exist.) - Wellbore #1 - Wellbore #1	11,200.0	7,362.2	798.9	658.3	5.683	ES
Northridge 4AD (Exist.) - Wellbore #1 - Wellbore #1	11,300.0	7,361.0	809.4	666.0	5.646	SF
Northridge 4KD (Exist.) - Wellbore #1 - Wellbore #1	10,959.3	7,415.6	545.5	398.6	3.713	CC, ES
Northridge 4KD (Exist.) - Wellbore #1 - Wellbore #1	11,000.0	7,415.8	547.0	399.0	3.695	SF
SRC Kelly Farms Pad Sec.4-T5N-R66W						
SRC Kelly Farms 12-4-3CHZ - Wellbore #1 - Plan #3 (6-	11,824.1	6,976.4	495.6	387.5	4.585	CC, ES, SF
SRC Kelly Farms 22-4-3CHZ - Wellbore #1 - Wellbore #1	11,824.1	6,972.0	460.6	416.7	10.499	CC, ES, SF
SRC Kelly Farms A-4-3CHZ - Wellbore #1 - Wellbore #1	11,824.1	6,975.0	658.2	530.2	5.142	CC, ES, SF
SRC Kelly Farms A-4-3NHZ - Wellbore #1 - Wellbore #1	11,824.1	6,860.9	922.5	794.7	7.218	CC, ES, SF
SRC Wiedeman Pad Sec.5-T5N-R66W						
SRC Wiedeman 22-5-4NHZ - Wellbore #1 - Plan #1 (6-2	800.0	800.0	15.0	11.6	4.450	CC, ES
SRC Wiedeman 22-5-4NHZ - Wellbore #1 - Plan #1 (6-2	11,824.1	11,599.0	283.6	71.7	1.338	Level 3, SF
SRC Wiedeman A-5-4CHZ - Wellbore #1 - Plan #1 (6-24	800.0	800.0	30.0	26.6	8.899	CC, ES
SRC Wiedeman A-5-4CHZ - Wellbore #1 - Plan #1 (6-24	11,824.1	11,719.8	446.0	184.5	1.705	SF
SRC Wiedeman A-5-4NHZ - Wellbore #1 - Plan #1 (6-24	800.0	800.0	45.0	41.6	13.349	CC, ES
SRC Wiedeman A-5-4NHZ - Wellbore #1 - Plan #1 (6-24	11,824.1	11,515.3	687.7	434.7	2.718	SF

<b>Offset Design</b> Northridge Pad Sec.4-T5N-R66W - Northridge 12-4D (Exist.) - Wellbore #1 - Wellbore #1											
Survey Program: 182-MWD											
Reference Offset Semi Major Axis Distance											
Measured Depth (ft)	Vertical Depth (ft)	Measured Depth (ft)	Vertical Depth (ft)	Reference (ft)	Offset (ft)	Highside Toolface (°)	Offset Wellbore Centre +N/-S (ft)	+E/-W (ft)	Between Centres (ft)	Between Ellipses (ft)	Minimum Separation (ft)
9,600.0	7,224.0	7,498.2	7,190.6	70.3	38.0	-91.83	-531.1	3,264.8	950.9	843.1	107.77
9,700.0	7,224.0	7,497.3	7,189.7	73.1	38.0	-91.64	-531.1	3,264.8	855.4	744.9	110.50
9,800.0	7,224.0	7,496.4	7,188.8	75.8	38.0	-91.45	-531.1	3,264.8	761.1	647.9	113.23
9,900.0	7,224.0	7,495.6	7,188.0	78.5	38.0	-91.27	-531.1	3,264.8	668.5	552.5	115.97
10,000.0	7,224.0	7,494.8	7,187.2	81.2	38.0	-91.10	-531.1	3,264.8	578.3	459.6	118.71
10,100.0	7,224.0	7,494.0	7,186.4	84.0	38.0	-90.93	-531.1	3,264.9	492.0	370.5	121.46
Separation Factor											Warning
8.823											
7.741											
6.722											
5.764											
4.872											
4.050											

CC - Min centre to center distance or convergent point, SF - min separation factor, ES - min ellipse separation

<b>Company:</b>	Synergy Resources	<b>Local Co-ordinate Reference:</b>	Well SRC Wiedeman 22-5-4CHZ
<b>Project:</b>	Sec.5-T5N-R66W	<b>TVD Reference:</b>	WELL @ 4796.0ft (RKB - 13')
<b>Reference Site:</b>	SRC Wiedeman Pad Sec.5-T5N-R66W	<b>MD Reference:</b>	WELL @ 4796.0ft (RKB - 13')
<b>Site Error:</b>	0.0ft	<b>North Reference:</b>	True
<b>Reference Well:</b>	SRC Wiedeman 22-5-4CHZ	<b>Survey Calculation Method:</b>	Minimum Curvature
<b>Well Error:</b>	0.0ft	<b>Output errors are at</b>	2.00 sigma
<b>Reference Wellbore</b>	Wellbore #1	<b>Database:</b>	Landmark
<b>Reference Design:</b>	Plan #1 (6-24-14)	<b>Offset TVD Reference:</b>	Offset Datum

<b>Offset Design</b> Northridge Pad Sec.4-T5N-R66W - Northridge 12-4D (Exist.) - Wellbore #1 - Wellbore #1												<b>Offset Site Error:</b>	0.0 ft
Survey Program: 182-MWD												<b>Offset Well Error:</b>	0.0 ft
Reference	Offset	Semi Major Axis		Distance									
Measured Depth (ft)	Vertical Depth (ft)	Measured Depth (ft)	Vertical Depth (ft)	Reference (ft)	Offset (ft)	Highside Toolface (°)	Offset Wellbore Centre +N/-S (ft)	+E/-W (ft)	Between Centres (ft)	Between Ellipses (ft)	Minimum Separation (ft)	Separation Factor	Warning
10,200.0	7,224.0	7,493.2	7,185.6	86.7	38.0	-90.76	-531.1	3,264.9	411.8	287.6	124.21	3.316	
10,300.0	7,224.0	7,492.4	7,184.8	89.4	38.0	-90.60	-531.1	3,264.9	342.3	215.3	126.96	2.696	
10,400.0	7,224.0	7,491.7	7,184.1	92.2	38.0	-90.44	-531.0	3,264.9	291.0	161.3	129.71	2.244	
10,500.0	7,224.0	7,491.0	7,183.3	94.9	38.0	-90.28	-531.0	3,264.9	268.8	136.4	132.47	2.029	
10,512.2	7,224.0	7,490.9	7,183.2	95.3	38.0	-90.27	-531.0	3,264.9	268.5	135.7	132.80	2.022 CC, ES, SF	
10,600.0	7,224.0	7,490.3	7,182.6	97.7	38.0	-90.13	-531.0	3,264.9	282.5	147.3	135.23	2.089	
10,700.0	7,224.0	7,489.6	7,181.9	100.4	38.0	-89.98	-531.0	3,264.9	327.7	189.7	137.99	2.375	
10,800.0	7,224.0	7,488.9	7,181.2	103.2	38.0	-89.84	-531.0	3,264.9	393.6	252.9	140.75	2.797	
10,900.0	7,224.0	7,488.2	7,180.6	105.9	38.0	-89.70	-531.0	3,264.9	471.7	328.2	143.51	3.287	
11,000.0	7,224.0	7,487.6	7,179.9	108.7	38.0	-89.56	-531.0	3,264.9	556.8	410.5	146.27	3.807	
11,100.0	7,224.0	7,486.9	7,179.3	111.5	38.0	-89.42	-531.0	3,264.9	646.2	497.2	149.04	4.336	
11,200.0	7,224.0	7,486.3	7,178.7	114.2	38.0	-89.29	-531.0	3,264.9	738.3	586.5	151.80	4.864	
11,300.0	7,224.0	7,485.7	7,178.0	117.0	38.0	-89.16	-531.0	3,264.9	832.3	677.7	154.57	5.385	
11,400.0	7,224.0	7,485.1	7,177.4	119.8	38.0	-89.03	-531.0	3,264.9	927.5	770.2	157.34	5.895	

<b>Company:</b>	Synergy Resources	<b>Local Co-ordinate Reference:</b>	Well SRC Wiedeman 22-5-4CHZ
<b>Project:</b>	Sec.5-T5N-R66W	<b>TVD Reference:</b>	WELL @ 4796.0ft (RKB - 13')
<b>Reference Site:</b>	SRC Wiedeman Pad Sec.5-T5N-R66W	<b>MD Reference:</b>	WELL @ 4796.0ft (RKB - 13')
<b>Site Error:</b>	0.0ft	<b>North Reference:</b>	True
<b>Reference Well:</b>	SRC Wiedeman 22-5-4CHZ	<b>Survey Calculation Method:</b>	Minimum Curvature
<b>Well Error:</b>	0.0ft	<b>Output errors are at</b>	2.00 sigma
<b>Reference Wellbore</b>	Wellbore #1	<b>Database:</b>	Landmark
<b>Reference Design:</b>	Plan #1 (6-24-14)	<b>Offset TVD Reference:</b>	Offset Datum

<b>Offset Design</b> Northridge Pad Sec.4-T5N-R66W - Northridge 22-4D (Exist.) - Wellbore #1 - Wellbore #1												<b>Offset Site Error:</b>	0.0 ft
Survey Program: 182-MWD												<b>Offset Well Error:</b>	0.0 ft
Reference	Offset	Semi Major Axis		Distance									
Measured Depth (ft)	Vertical Depth (ft)	Measured Depth (ft)	Vertical Depth (ft)	Reference (ft)	Offset (ft)	Highside Toolface (°)	Offset Wellbore Centre +N/-S (ft)	+E/-W (ft)	Between Centres (ft)	Between Ellipses (ft)	Minimum Separation (ft)	Separation Factor	Warning
10,800.0	7,224.0	7,277.7	7,209.3	103.2	18.7	-119.35	-732.7	4,463.4	909.2	800.8	108.38	8.389	
10,900.0	7,224.0	7,274.8	7,206.5	105.9	18.7	-116.67	-732.6	4,463.5	809.4	696.2	113.16	7.153	
11,000.0	7,224.0	7,271.9	7,203.6	108.7	18.7	-113.89	-732.5	4,463.5	709.7	591.7	117.93	6.018	
11,100.0	7,224.0	7,269.1	7,200.8	111.5	18.7	-110.99	-732.4	4,463.6	610.0	487.3	122.64	4.974	
11,200.0	7,224.0	7,266.2	7,197.9	114.2	18.7	-108.00	-732.4	4,463.7	510.4	383.2	127.22	4.012	
11,300.0	7,224.0	7,263.4	7,195.1	117.0	18.7	-104.92	-732.3	4,463.8	411.0	279.4	131.63	3.123	
11,400.0	7,224.0	7,260.6	7,192.3	119.8	18.7	-101.78	-732.2	4,463.8	312.0	176.2	135.81	2.298	
11,500.0	7,224.0	7,257.7	7,189.4	122.5	18.7	-98.57	-732.1	4,463.9	213.9	74.2	139.69	1.531	
11,600.0	7,224.0	7,254.9	7,186.6	125.3	18.7	-95.34	-732.0	4,464.0	118.9	-24.3	143.23	0.830 Level 1	
11,700.0	7,224.0	7,252.1	7,183.8	128.1	18.7	-92.09	-731.9	4,464.1	50.1	-96.2	146.38	0.343 Level 1	
11,708.2	7,224.0	7,251.9	7,183.6	128.3	18.7	-91.82	-731.9	4,464.1	49.5	-97.2	146.63	0.337 Level 1, CC, ES, SF	
11,800.0	7,224.0	7,249.3	7,181.0	130.9	18.7	-88.84	-731.8	4,464.2	104.2	-44.9	149.12	0.699 Level 1	
11,824.1	7,224.0	7,248.6	7,180.3	131.5	18.6	-88.06	-731.8	4,464.2	125.9	-23.8	149.72	0.841 Level 1	

<b>Company:</b>	Synergy Resources	<b>Local Co-ordinate Reference:</b>	Well SRC Wiedeman 22-5-4CHZ
<b>Project:</b>	Sec.5-T5N-R66W	<b>TVD Reference:</b>	WELL @ 4796.0ft (RKB - 13')
<b>Reference Site:</b>	SRC Wiedeman Pad Sec.5-T5N-R66W	<b>MD Reference:</b>	WELL @ 4796.0ft (RKB - 13')
<b>Site Error:</b>	0.0ft	<b>North Reference:</b>	True
<b>Reference Well:</b>	SRC Wiedeman 22-5-4CHZ	<b>Survey Calculation Method:</b>	Minimum Curvature
<b>Well Error:</b>	0.0ft	<b>Output errors are at</b>	2.00 sigma
<b>Reference Wellbore</b>	Wellbore #1	<b>Database:</b>	Landmark
<b>Reference Design:</b>	Plan #1 (6-24-14)	<b>Offset TVD Reference:</b>	Offset Datum

<b>Offset Design</b> Northridge Pad Sec.4-T5N-R66W - Northridge 4AD (Exist.) - Wellbore #1 - Wellbore #1												<b>Offset Site Error:</b>	0.0 ft
Survey Program: 182-MWD												<b>Offset Well Error:</b>	0.0 ft
Reference	Offset	Semi Major Axis		Distance									
Measured Depth (ft)	Vertical Depth (ft)	Measured Depth (ft)	Vertical Depth (ft)	Reference (ft)	Offset (ft)	Highside Toolface (°)	Offset Wellbore Centre +N/-S (ft)	+E/-W (ft)	Between Centres (ft)	Between Ellipses (ft)	Minimum Separation (ft)	Separation Factor	Warning
10,600.0	7,224.0	7,369.4	7,179.6	97.7	28.9	-89.90	8.5	3,910.2	978.3	854.3	123.98	7.891	
10,700.0	7,224.0	7,368.2	7,178.4	100.4	28.9	-89.82	8.5	3,910.2	924.1	797.4	126.74	7.291	
10,800.0	7,224.0	7,367.0	7,177.2	103.2	28.9	-89.73	8.5	3,910.2	878.0	748.5	129.50	6.779	
10,900.0	7,224.0	7,365.8	7,176.0	105.9	28.9	-89.64	8.5	3,910.3	841.2	709.0	132.27	6.360	
11,000.0	7,224.0	7,364.6	7,174.8	108.7	28.9	-89.56	8.4	3,910.3	815.2	680.1	135.03	6.037	
11,100.0	7,224.0	7,363.4	7,173.6	111.5	28.9	-89.47	8.4	3,910.3	800.9	663.1	137.80	5.812	
11,165.8	7,224.0	7,362.6	7,172.9	113.3	28.9	-89.42	8.4	3,910.3	798.2	658.5	139.62	5.716 CC	
11,200.0	7,224.0	7,362.2	7,172.5	114.2	28.9	-89.39	8.4	3,910.3	798.9	658.3	140.57	5.683 ES	
11,300.0	7,224.0	7,361.0	7,171.3	117.0	28.9	-89.30	8.4	3,910.3	809.4	666.0	143.34	5.646 SF	
11,400.0	7,224.0	7,359.8	7,170.1	119.8	28.9	-89.21	8.4	3,910.3	831.8	685.7	146.11	5.693	
11,500.0	7,224.0	7,358.6	7,168.9	122.5	28.9	-89.13	8.4	3,910.3	865.3	716.4	148.89	5.812	
11,600.0	7,224.0	7,357.4	7,167.7	125.3	28.9	-89.04	8.4	3,910.4	908.6	757.0	151.66	5.991	
11,700.0	7,224.0	7,356.2	7,166.5	128.1	28.9	-88.96	8.4	3,910.4	960.4	806.0	154.43	6.219	

<b>Company:</b>	Synergy Resources	<b>Local Co-ordinate Reference:</b>	Well SRC Wiedeman 22-5-4CHZ
<b>Project:</b>	Sec.5-T5N-R66W	<b>TVD Reference:</b>	WELL @ 4796.0ft (RKB - 13')
<b>Reference Site:</b>	SRC Wiedeman Pad Sec.5-T5N-R66W	<b>MD Reference:</b>	WELL @ 4796.0ft (RKB - 13')
<b>Site Error:</b>	0.0ft	<b>North Reference:</b>	True
<b>Reference Well:</b>	SRC Wiedeman 22-5-4CHZ	<b>Survey Calculation Method:</b>	Minimum Curvature
<b>Well Error:</b>	0.0ft	<b>Output errors are at</b>	2.00 sigma
<b>Reference Wellbore</b>	Wellbore #1	<b>Database:</b>	Landmark
<b>Reference Design:</b>	Plan #1 (6-24-14)	<b>Offset TVD Reference:</b>	Offset Datum

<b>Offset Design</b> Northridge Pad Sec.4-T5N-R66W - Northridge 4KD (Exist.) - Wellbore #1 - Wellbore #1												<b>Offset Site Error:</b>	0.0 ft
Survey Program: 124-MWD												<b>Offset Well Error:</b>	0.0 ft
Reference		Offset		Semi Major Axis			Distance						
Measured Depth (ft)	Vertical Depth (ft)	Measured Depth (ft)	Vertical Depth (ft)	Reference (ft)	Offset (ft)	Highside Toolface (°)	Offset Wellbore Centre +N/-S (ft)	+E/-W (ft)	Between Centres (ft)	Between Ellipses (ft)	Minimum Separation (ft)	Separation Factor	Warning
10,200.0	7,224.0	7,411.0	7,173.2	86.7	43.4	89.07	-1,338.1	3,724.3	934.9	809.0	125.93	7.424	
10,300.0	7,224.0	7,411.6	7,173.8	89.4	43.4	89.13	-1,338.1	3,724.3	855.7	727.0	128.69	6.649	
10,400.0	7,224.0	7,412.2	7,174.4	92.2	43.4	89.20	-1,338.1	3,724.3	781.2	649.8	131.44	5.944	
10,500.0	7,224.0	7,412.8	7,175.0	94.9	43.4	89.26	-1,338.1	3,724.3	713.1	578.9	134.20	5.314	
10,600.0	7,224.0	7,413.4	7,175.5	97.7	43.4	89.32	-1,338.1	3,724.3	653.2	516.2	136.96	4.769	
10,700.0	7,224.0	7,414.0	7,176.1	100.4	43.4	89.39	-1,338.1	3,724.3	604.0	464.2	139.72	4.323	
10,800.0	7,224.0	7,414.6	7,176.7	103.2	43.4	89.45	-1,338.1	3,724.3	568.3	425.8	142.49	3.988	
10,900.0	7,224.0	7,415.2	7,177.3	105.9	43.4	89.51	-1,338.2	3,724.3	548.7	403.4	145.26	3.777	
10,959.3	7,224.0	7,415.6	7,177.7	107.6	43.4	89.55	-1,338.2	3,724.3	545.5	398.6	146.90	3.713 CC, ES	
11,000.0	7,224.0	7,415.8	7,177.9	108.7	43.4	89.57	-1,338.2	3,724.3	547.0	399.0	148.02	3.695 SF	
11,100.0	7,224.0	7,416.4	7,178.5	111.5	43.4	89.64	-1,338.2	3,724.3	563.4	412.6	150.79	3.736	
11,200.0	7,224.0	7,417.0	7,179.1	114.2	43.4	89.70	-1,338.2	3,724.3	596.2	442.7	153.57	3.883	
11,300.0	7,224.0	7,417.6	7,179.8	117.0	43.4	89.76	-1,338.2	3,724.3	643.2	486.8	156.34	4.114	
11,400.0	7,224.0	7,418.2	7,180.4	119.8	43.4	89.83	-1,338.2	3,724.3	701.3	542.2	159.12	4.407	
11,500.0	7,224.0	7,418.8	7,181.0	122.5	43.4	89.89	-1,338.2	3,724.3	768.1	606.2	161.89	4.744	
11,600.0	7,224.0	7,419.5	7,181.6	125.3	43.4	89.96	-1,338.2	3,724.3	841.5	676.8	164.67	5.110	
11,700.0	7,224.0	7,420.1	7,182.2	128.1	43.4	90.02	-1,338.2	3,724.3	919.9	752.5	167.45	5.494	

<b>Company:</b>	Synergy Resources	<b>Local Co-ordinate Reference:</b>	Well SRC Wiedeman 22-5-4CHZ
<b>Project:</b>	Sec.5-T5N-R66W	<b>TVD Reference:</b>	WELL @ 4796.0ft (RKB - 13')
<b>Reference Site:</b>	SRC Wiedeman Pad Sec.5-T5N-R66W	<b>MD Reference:</b>	WELL @ 4796.0ft (RKB - 13')
<b>Site Error:</b>	0.0ft	<b>North Reference:</b>	True
<b>Reference Well:</b>	SRC Wiedeman 22-5-4CHZ	<b>Survey Calculation Method:</b>	Minimum Curvature
<b>Well Error:</b>	0.0ft	<b>Output errors are at</b>	2.00 sigma
<b>Reference Wellbore</b>	Wellbore #1	<b>Database:</b>	Landmark
<b>Reference Design:</b>	Plan #1 (6-24-14)	<b>Offset TVD Reference:</b>	Offset Datum

<b>Offset Design</b> SRC Kelly Farms Pad Sec.4-T5N-R66W - SRC Kelly Farms 12-4-3CHZ - Wellbore #1 - Plan #3 (6-19-1												<b>Offset Site Error:</b>	0.0 ft
Survey Program: 0-MWD												<b>Offset Well Error:</b>	0.0 ft
Reference		Offset		Semi Major Axis			Distance						
Measured Depth (ft)	Vertical Depth (ft)	Measured Depth (ft)	Vertical Depth (ft)	Reference (ft)	Offset (ft)	Highside Toolface (°)	Offset Wellbore Centre +N/-S (ft)	+E/-W (ft)	Between Centres (ft)	Between Ellipses (ft)	Minimum Separation (ft)	Separation Factor	Warning
11,200.0	7,224.0	6,800.0	6,784.4	114.2	15.0	-32.88	-512.1	4,814.9	989.8	913.4	76.43	12.952	
11,300.0	7,224.0	6,819.2	6,801.6	117.0	15.0	-34.00	-512.2	4,823.4	903.6	823.8	79.86	11.315	
11,400.0	7,224.0	6,850.0	6,828.7	119.8	15.1	-35.90	-512.3	4,838.0	819.4	734.8	84.65	9.680	
11,500.0	7,224.0	6,868.0	6,844.3	122.5	15.2	-37.08	-512.3	4,847.0	737.4	649.1	88.34	8.347	
11,600.0	7,224.0	6,900.0	6,871.5	125.3	15.3	-39.30	-512.5	4,863.8	658.4	564.5	93.84	7.015	
11,700.0	7,224.0	6,929.6	6,896.1	128.1	15.4	-41.51	-512.6	4,880.4	582.9	483.5	99.40	5.864	
11,800.0	7,224.0	6,966.7	6,925.9	130.9	15.6	-44.49	-512.7	4,902.4	511.9	405.6	106.27	4.817	
11,824.1	7,224.0	6,976.4	6,933.5	131.5	15.6	-45.30	-512.8	4,908.4	495.6	387.5	108.09	4.585 CC, ES, SF	

<b>Company:</b>	Synergy Resources	<b>Local Co-ordinate Reference:</b>	Well SRC Wiedeman 22-5-4CHZ
<b>Project:</b>	Sec.5-T5N-R66W	<b>TVD Reference:</b>	WELL @ 4796.0ft (RKB - 13')
<b>Reference Site:</b>	SRC Wiedeman Pad Sec.5-T5N-R66W	<b>MD Reference:</b>	WELL @ 4796.0ft (RKB - 13')
<b>Site Error:</b>	0.0ft	<b>North Reference:</b>	True
<b>Reference Well:</b>	SRC Wiedeman 22-5-4CHZ	<b>Survey Calculation Method:</b>	Minimum Curvature
<b>Well Error:</b>	0.0ft	<b>Output errors are at</b>	2.00 sigma
<b>Reference Wellbore</b>	Wellbore #1	<b>Database:</b>	Landmark
<b>Reference Design:</b>	Plan #1 (6-24-14)	<b>Offset TVD Reference:</b>	Offset Datum

<b>Offset Design</b>												<b>Offset Site Error:</b>	0.0 ft
SRC Kelly Farms Pad Sec.4-T5N-R66W - SRC Kelly Farms 22-4-3CHZ - Wellbore #1 - Wellbore #1												<b>Offset Well Error:</b>	0.0 ft
Survey Program: 80-MWD													
Reference		Offset		Semi Major Axis			Distance						
Measured Depth (ft)	Vertical Depth (ft)	Measured Depth (ft)	Vertical Depth (ft)	Reference (ft)	Offset (ft)	Highside Toolface (°)	Offset Wellbore Centre +N/-S (ft)	+E/-W (ft)	Between Centres (ft)	Between Ellipses (ft)	Minimum Separation (ft)	Separation Factor	Warning
11,300.0	7,224.0	6,830.5	6,811.6	117.0	14.7	-1.67	-763.7	4,888.6	916.5	876.6	39.91	22.966	
11,400.0	7,224.0	6,849.2	6,828.5	119.8	14.8	-1.75	-763.5	4,896.7	826.3	785.7	40.66	20.324	
11,500.0	7,224.0	6,883.0	6,858.4	122.5	14.9	-1.88	-763.4	4,912.4	737.7	696.2	41.44	17.803	
11,600.0	7,224.0	6,883.0	6,858.4	125.3	14.9	-1.88	-763.4	4,912.4	650.4	608.2	42.16	15.427	
11,700.0	7,224.0	6,928.0	6,897.0	128.1	15.1	-1.95	-764.0	4,935.4	564.4	521.5	42.94	13.143	
11,800.0	7,224.0	6,972.0	6,933.8	130.9	15.3	-1.81	-765.5	4,959.5	480.6	436.9	43.70	10.999	
11,824.1	7,224.0	6,972.0	6,933.8	131.5	15.3	-1.81	-765.5	4,959.5	460.6	416.7	43.87	10.499 CC, ES, SF	

<b>Company:</b>	Synergy Resources	<b>Local Co-ordinate Reference:</b>	Well SRC Wiedeman 22-5-4CHZ
<b>Project:</b>	Sec.5-T5N-R66W	<b>TVD Reference:</b>	WELL @ 4796.0ft (RKB - 13')
<b>Reference Site:</b>	SRC Wiedeman Pad Sec.5-T5N-R66W	<b>MD Reference:</b>	WELL @ 4796.0ft (RKB - 13')
<b>Site Error:</b>	0.0ft	<b>North Reference:</b>	True
<b>Reference Well:</b>	SRC Wiedeman 22-5-4CHZ	<b>Survey Calculation Method:</b>	Minimum Curvature
<b>Well Error:</b>	0.0ft	<b>Output errors are at</b>	2.00 sigma
<b>Reference Wellbore</b>	Wellbore #1	<b>Database:</b>	Landmark
<b>Reference Design:</b>	Plan #1 (6-24-14)	<b>Offset TVD Reference:</b>	Offset Datum

<b>Offset Design</b> SRC Kelly Farms Pad Sec.4-T5N-R66W - SRC Kelly Farms A-4-3CHZ - Wellbore #1 - Wellbore #1												<b>Offset Site Error:</b>	0.0 ft
Survey Program: 79-MWD												<b>Offset Well Error:</b>	0.0 ft
Reference		Offset		Semi Major Axis			Distance						
Measured Depth (ft)	Vertical Depth (ft)	Measured Depth (ft)	Vertical Depth (ft)	Reference (ft)	Offset (ft)	Highside Toolface (°)	Offset Wellbore Centre +N/-S (ft)	+E/-W (ft)	Between Centres (ft)	Between Ellipses (ft)	Minimum Separation (ft)	Separation Factor	Warning
11,400.0	7,224.0	6,886.0	6,852.6	119.8	15.2	-53.56	-312.7	4,917.1	958.4	848.3	110.06	8.708	
11,500.0	7,224.0	6,886.0	6,852.6	122.5	15.2	-53.56	-312.7	4,917.1	880.3	768.0	112.34	7.837	
11,600.0	7,224.0	6,915.1	6,878.1	125.3	15.3	-55.58	-313.9	4,931.0	805.8	688.5	117.28	6.871	
11,700.0	7,224.0	6,936.2	6,896.1	128.1	15.4	-57.08	-314.6	4,942.0	736.2	614.7	121.54	6.057	
11,800.0	7,224.0	6,975.0	6,927.8	130.9	15.5	-59.89	-315.5	4,964.4	672.8	545.4	127.42	5.280	
11,824.1	7,224.0	6,975.0	6,927.8	131.5	15.5	-59.89	-315.5	4,964.4	658.2	530.2	128.00	5.142 CC, ES, SF	

<b>Company:</b>	Synergy Resources	<b>Local Co-ordinate Reference:</b>	Well SRC Wiedeman 22-5-4CHZ
<b>Project:</b>	Sec.5-T5N-R66W	<b>TVD Reference:</b>	WELL @ 4796.0ft (RKB - 13')
<b>Reference Site:</b>	SRC Wiedeman Pad Sec.5-T5N-R66W	<b>MD Reference:</b>	WELL @ 4796.0ft (RKB - 13')
<b>Site Error:</b>	0.0ft	<b>North Reference:</b>	True
<b>Reference Well:</b>	SRC Wiedeman 22-5-4CHZ	<b>Survey Calculation Method:</b>	Minimum Curvature
<b>Well Error:</b>	0.0ft	<b>Output errors are at</b>	2.00 sigma
<b>Reference Wellbore</b>	Wellbore #1	<b>Database:</b>	Landmark
<b>Reference Design:</b>	Plan #1 (6-24-14)	<b>Offset TVD Reference:</b>	Offset Datum

<b>Offset Design</b>												<b>Offset Site Error:</b>	0.0 ft
SRC Kelly Farms Pad Sec.4-T5N-R66W - SRC Kelly Farms A-4-3NHZ - Wellbore #1 - Wellbore #1												<b>Offset Well Error:</b>	0.0 ft
Survey Program: 174-MWD													
Reference		Offset		Semi Major Axis			Distance						
Measured Depth (ft)	Vertical Depth (ft)	Measured Depth (ft)	Vertical Depth (ft)	Reference (ft)	Offset (ft)	Highside Toolface (°)	Offset Wellbore Centre +N/-S (ft)	+E/-W (ft)	Between Centres (ft)	Between Ellipses (ft)	Minimum Separation (ft)	Separation Factor	Warning
11,700.0	7,224.0	6,794.0	6,721.1	128.1	17.0	-56.37	-62.6	4,924.7	979.7	858.7	120.99	8.098	
11,800.0	7,224.0	6,846.8	6,759.4	130.9	17.2	-58.62	-60.3	4,961.1	933.1	806.7	126.43	7.381	
11,824.1	7,224.0	6,860.9	6,769.5	131.5	17.3	-59.23	-59.7	4,970.9	922.5	794.7	127.82	7.218 CC, ES, SF	

<b>Company:</b>	Synergy Resources	<b>Local Co-ordinate Reference:</b>	Well SRC Wiedeman 22-5-4CHZ
<b>Project:</b>	Sec.5-T5N-R66W	<b>TVD Reference:</b>	WELL @ 4796.0ft (RKB - 13')
<b>Reference Site:</b>	SRC Wiedeman Pad Sec.5-T5N-R66W	<b>MD Reference:</b>	WELL @ 4796.0ft (RKB - 13')
<b>Site Error:</b>	0.0ft	<b>North Reference:</b>	True
<b>Reference Well:</b>	SRC Wiedeman 22-5-4CHZ	<b>Survey Calculation Method:</b>	Minimum Curvature
<b>Well Error:</b>	0.0ft	<b>Output errors are at</b>	2.00 sigma
<b>Reference Wellbore</b>	Wellbore #1	<b>Database:</b>	Landmark
<b>Reference Design:</b>	Plan #1 (6-24-14)	<b>Offset TVD Reference:</b>	Offset Datum

Offset Design SRC Wiedeman Pad Sec.5-T5N-R66W - SRC Wiedeman 22-5-4NHZ - Wellbore #1 - Plan #1 (6-24-14)													Offset Site Error:	0.0 ft
Survey Program: 0-MWD													Offset Well Error:	0.0 ft
Reference		Offset		Semi Major Axis			Distance							Warning
Measured Depth (ft)	Vertical Depth (ft)	Measured Depth (ft)	Vertical Depth (ft)	Reference (ft)	Offset (ft)	Highside Toolface (°)	Offset Wellbore Centre +N/-S (ft)	+E/-W (ft)	Between Centres (ft)	Between Ellipses (ft)	Minimum Separation (ft)	Separation Factor		
0.0	0.0	0.0	0.0	0.0	0.0	5.32	14.9	1.4	15.0	15.0	0.00	N/A		
100.0	100.0	100.0	100.0	0.1	0.1	5.32	14.9	1.4	15.0	14.8	0.22	66.743		
200.0	200.0	200.0	200.0	0.3	0.3	5.32	14.9	1.4	15.0	14.3	0.67	22.248		
300.0	300.0	300.0	300.0	0.6	0.6	5.32	14.9	1.4	15.0	13.9	1.12	13.349		
400.0	400.0	400.0	400.0	0.8	0.8	5.32	14.9	1.4	15.0	13.4	1.57	9.535		
500.0	500.0	500.0	500.0	1.0	1.0	5.32	14.9	1.4	15.0	13.0	2.02	7.416		
600.0	600.0	600.0	600.0	1.2	1.2	5.32	14.9	1.4	15.0	12.5	2.47	6.068		
700.0	700.0	700.0	700.0	1.5	1.5	5.32	14.9	1.4	15.0	12.1	2.92	5.134		
800.0	800.0	800.0	800.0	1.7	1.7	5.32	14.9	1.4	15.0	11.6	3.37	4.450 CC, ES		
900.0	900.0	900.0	900.0	1.9	1.9	170.11	14.9	1.4	16.7	12.9	3.79	4.406		
1,000.0	999.8	999.8	999.8	2.1	2.1	172.45	14.9	1.4	21.9	17.7	4.20	5.218		
1,100.0	1,099.5	1,100.5	1,100.4	2.3	2.3	174.07	13.3	0.8	28.8	24.3	4.57	6.304		
1,200.0	1,198.7	1,201.4	1,201.2	2.5	2.5	174.73	8.3	-1.0	35.8	30.8	4.93	7.253		
1,304.8	1,302.2	1,307.3	1,306.7	2.8	2.7	174.89	-0.6	-4.2	43.1	37.7	5.32	8.087		
1,400.0	1,395.9	1,403.9	1,402.6	3.1	2.9	174.61	-11.8	-8.2	48.1	42.4	5.71	8.415		
1,500.0	1,494.4	1,504.0	1,501.7	3.4	3.2	174.02	-25.4	-13.0	51.4	45.2	6.14	8.369		
1,600.0	1,592.8	1,604.0	1,600.6	3.7	3.4	173.50	-38.9	-17.9	54.7	48.1	6.58	8.311		
1,700.0	1,691.3	1,703.9	1,699.5	4.1	3.7	173.04	-52.4	-22.7	57.9	50.9	7.02	8.248		
1,800.0	1,789.7	1,803.9	1,798.4	4.4	4.0	172.64	-66.0	-27.5	61.2	53.7	7.48	8.183		
1,900.0	1,888.2	1,903.8	1,897.3	4.8	4.3	172.27	-79.5	-32.4	64.5	56.6	7.95	8.120		
2,000.0	1,986.6	2,003.8	1,996.2	5.2	4.6	171.94	-93.0	-37.2	67.8	59.4	8.42	8.056		
2,100.0	2,085.1	2,103.7	2,095.1	5.5	4.9	171.63	-106.6	-42.0	71.1	62.2	8.90	7.995		
2,200.0	2,183.5	2,203.6	2,194.0	5.9	5.3	171.36	-120.1	-46.9	74.4	65.0	9.38	7.937		
2,300.0	2,282.0	2,303.6	2,292.9	6.3	5.6	171.11	-133.6	-51.7	77.7	67.9	9.86	7.881		
2,400.0	2,380.4	2,403.5	2,391.8	6.7	5.9	170.88	-147.2	-56.6	81.0	70.7	10.35	7.827		
2,500.0	2,478.9	2,503.5	2,490.7	7.1	6.3	170.67	-160.7	-61.4	84.3	73.5	10.84	7.776		
2,600.0	2,577.3	2,603.4	2,589.6	7.5	6.6	170.47	-174.2	-66.2	87.6	76.3	11.34	7.728		
2,700.0	2,675.8	2,703.4	2,688.5	7.9	6.9	170.29	-187.8	-71.1	90.9	79.1	11.84	7.683		
2,800.0	2,774.2	2,803.3	2,787.4	8.3	7.3	170.12	-201.3	-75.9	94.3	81.9	12.34	7.640		
2,900.0	2,872.7	2,903.3	2,886.3	8.7	7.6	169.96	-214.8	-80.7	97.6	84.7	12.84	7.599		
3,000.0	2,971.1	3,003.2	2,985.3	9.1	8.0	169.81	-228.4	-85.6	100.9	87.5	13.34	7.560		
3,100.0	3,069.6	3,103.2	3,084.2	9.5	8.3	169.67	-241.9	-90.4	104.2	90.3	13.85	7.523		
3,200.0	3,168.0	3,203.1	3,183.1	9.9	8.7	169.54	-255.4	-95.3	107.5	93.1	14.35	7.488		
3,300.0	3,266.5	3,303.0	3,282.0	10.3	9.0	169.42	-269.0	-100.1	110.8	95.9	14.86	7.455		
3,400.0	3,365.0	3,403.0	3,380.9	10.7	9.4	169.31	-282.5	-104.9	114.1	98.7	15.37	7.424		
3,500.0	3,463.4	3,502.9	3,479.8	11.1	9.7	169.20	-296.1	-109.8	117.4	101.5	15.88	7.394		
3,600.0	3,561.9	3,602.9	3,578.7	11.5	10.0	169.10	-309.6	-114.6	120.7	104.3	16.39	7.365		
3,700.0	3,660.3	3,702.8	3,677.6	11.9	10.4	169.00	-323.1	-119.4	124.1	107.1	16.91	7.338		
3,800.0	3,758.8	3,802.8	3,776.5	12.3	10.7	168.91	-336.7	-124.3	127.4	109.9	17.42	7.312		
3,900.0	3,857.2	3,902.7	3,875.4	12.7	11.1	168.82	-350.2	-129.1	130.7	112.7	17.93	7.288		
4,000.0	3,955.7	4,002.7	3,974.3	13.1	11.4	168.74	-363.7	-134.0	134.0	115.5	18.45	7.264		
4,100.0	4,054.1	4,102.6	4,073.2	13.5	11.8	168.66	-377.3	-138.8	137.3	118.3	18.96	7.241		
4,200.0	4,152.6	4,202.5	4,172.1	13.9	12.2	168.58	-390.8	-143.6	140.6	121.1	19.48	7.220		
4,300.0	4,251.0	4,302.5	4,271.0	14.3	12.5	168.51	-404.3	-148.5	143.9	123.9	19.99	7.199		
4,400.0	4,349.5	4,402.4	4,369.9	14.7	12.9	168.44	-417.9	-153.3	147.2	126.7	20.51	7.180		
4,500.0	4,447.9	4,502.4	4,468.8	15.1	13.2	168.38	-431.4	-158.1	150.6	129.5	21.03	7.161		
4,600.0	4,546.4	4,602.3	4,567.7	15.5	13.6	168.32	-444.9	-163.0	153.9	132.3	21.54	7.142		
4,700.0	4,644.8	4,702.3	4,666.7	15.9	13.9	168.26	-458.5	-167.8	157.2	135.1	22.06	7.125		
4,800.0	4,743.3	4,802.2	4,765.6	16.3	14.3	168.20	-472.0	-172.7	160.5	137.9	22.58	7.108		
4,900.0	4,841.7	4,902.2	4,864.5	16.7	14.6	168.14	-485.5	-177.5	163.8	140.7	23.10	7.092		
5,000.0	4,940.2	5,002.1	4,963.4	17.1	15.0	168.09	-499.1	-182.3	167.1	143.5	23.62	7.077		
5,100.0	5,038.6	5,102.1	5,062.3	17.5	15.3	168.04	-512.6	-187.2	170.5	146.3	24.14	7.062		

CC - Min centre to center distance or convergent point, SF - min separation factor, ES - min ellipse separation

<b>Company:</b>	Synergy Resources	<b>Local Co-ordinate Reference:</b>	Well SRC Wiedeman 22-5-4CHZ
<b>Project:</b>	Sec.5-T5N-R66W	<b>TVD Reference:</b>	WELL @ 4796.0ft (RKB - 13')
<b>Reference Site:</b>	SRC Wiedeman Pad Sec.5-T5N-R66W	<b>MD Reference:</b>	WELL @ 4796.0ft (RKB - 13')
<b>Site Error:</b>	0.0ft	<b>North Reference:</b>	True
<b>Reference Well:</b>	SRC Wiedeman 22-5-4CHZ	<b>Survey Calculation Method:</b>	Minimum Curvature
<b>Well Error:</b>	0.0ft	<b>Output errors are at</b>	2.00 sigma
<b>Reference Wellbore</b>	Wellbore #1	<b>Database:</b>	Landmark
<b>Reference Design:</b>	Plan #1 (6-24-14)	<b>Offset TVD Reference:</b>	Offset Datum

Offset Design SRC Wiedeman Pad Sec.5-T5N-R66W - SRC Wiedeman 22-5-4NHZ - Wellbore #1 - Plan #1 (6-24-14)												Offset Site Error:	0.0 ft
Survey Program: 0-MWD												Offset Well Error:	0.0 ft
Reference		Offset		Semi Major Axis			Distance						
Measured Depth (ft)	Vertical Depth (ft)	Measured Depth (ft)	Vertical Depth (ft)	Reference (ft)	Offset (ft)	Highside Toolface (°)	Offset Wellbore Centre +N/-S (ft)	+E/-W (ft)	Between Centres (ft)	Between Ellipses (ft)	Minimum Separation (ft)	Separation Factor	Warning
5,200.0	5,137.1	5,202.0	5,161.2	17.9	15.7	167.99	-526.1	-192.0	173.8	149.1	24.66	7.047	
5,300.0	5,235.5	5,301.9	5,260.1	18.3	16.0	167.94	-539.7	-196.9	177.1	151.9	25.18	7.033	
5,400.0	5,334.0	5,401.9	5,359.0	18.7	16.4	167.90	-553.2	-201.7	180.4	154.7	25.70	7.020	
5,500.0	5,432.4	5,501.8	5,457.9	19.1	16.8	167.85	-566.7	-206.5	183.7	157.5	26.22	7.007	
5,600.0	5,530.9	5,601.8	5,556.8	19.5	17.1	167.81	-580.3	-211.4	187.0	160.3	26.74	6.995	
5,700.0	5,629.3	5,701.7	5,655.7	19.9	17.5	167.77	-593.8	-216.2	190.4	163.1	27.26	6.983	
5,800.0	5,727.8	5,797.5	5,750.6	20.3	17.8	167.79	-606.1	-220.6	194.4	166.6	27.75	7.005	
5,871.1	5,797.8	5,864.1	5,816.8	20.6	17.9	167.93	-613.0	-223.1	199.0	171.0	28.06	7.094	
5,900.0	5,826.3	5,891.1	5,843.6	20.7	18.0	168.03	-615.4	-223.9	201.3	173.1	28.18	7.142	
6,000.0	5,925.2	5,984.3	5,936.7	21.0	18.2	168.35	-621.9	-226.2	208.7	180.2	28.55	7.312	
6,100.0	6,024.5	6,077.4	6,029.6	21.2	18.3	168.69	-625.4	-227.5	215.9	187.1	28.87	7.480	
6,200.0	6,124.2	6,172.0	6,124.2	21.4	18.4	169.03	-626.3	-227.8	222.8	193.6	29.15	7.640	
6,300.0	6,224.1	6,271.9	6,224.1	21.5	18.6	169.26	-626.3	-227.8	227.1	197.7	29.42	7.719	
6,375.9	6,300.0	6,347.8	6,300.0	21.6	18.7	5.66	-626.3	-227.8	228.1	188.1	39.95	5.708	
6,400.0	6,324.1	6,371.9	6,324.1	21.7	18.7	5.66	-626.3	-227.8	228.1	188.0	40.01	5.700	
6,500.0	6,424.1	6,468.4	6,420.5	21.8	18.8	6.88	-626.2	-222.9	228.7	188.4	40.33	5.671	
6,583.7	6,507.8	6,546.8	6,497.6	21.9	18.9	10.18	-626.0	-209.5	231.1	190.4	40.66	5.684	
6,600.0	6,524.1	6,561.7	6,512.1	21.9	18.9	-78.08	-625.9	-206.0	231.8	201.9	29.91	7.749	
6,650.0	6,574.0	6,607.0	6,555.7	21.9	18.9	-75.50	-625.7	-193.6	234.4	204.5	29.90	7.839	
6,700.0	6,623.6	6,650.0	6,596.2	22.0	18.9	-73.13	-625.5	-179.2	237.3	207.4	29.92	7.934	
6,750.0	6,672.6	6,696.0	6,638.5	22.0	19.0	-70.72	-625.2	-161.2	240.6	210.6	29.95	8.032	
6,800.0	6,720.8	6,739.8	6,677.6	22.0	19.0	-68.54	-624.9	-141.5	244.1	214.1	30.00	8.136	
6,850.0	6,768.0	6,783.1	6,715.1	22.0	19.0	-66.51	-624.6	-119.8	247.7	217.7	30.04	8.245	
6,900.0	6,813.9	6,826.0	6,750.8	22.1	19.0	-64.62	-624.3	-96.0	251.5	221.4	30.07	8.362	
6,950.0	6,858.3	6,868.6	6,784.8	22.1	19.0	-62.89	-623.9	-70.4	255.3	225.2	30.08	8.486	
7,000.0	6,901.0	6,910.8	6,816.9	22.0	19.0	-61.31	-623.5	-43.1	259.0	228.9	30.06	8.616	
7,050.0	6,941.8	6,950.0	6,845.3	22.0	19.0	-59.94	-623.0	-16.0	262.7	232.7	30.00	8.756	
7,100.0	6,980.5	6,994.3	6,875.5	22.0	19.0	-58.57	-622.5	16.4	266.1	236.2	29.96	8.884	
7,150.0	7,016.9	7,035.7	6,901.8	22.0	19.0	-57.41	-622.1	48.3	269.4	239.5	29.90	9.011	
7,200.0	7,050.8	7,076.8	6,926.2	22.0	19.0	-56.39	-621.6	81.4	272.5	242.7	29.83	9.136	
7,250.0	7,082.0	7,117.8	6,948.5	22.0	19.1	-55.49	-621.0	115.8	275.3	245.5	29.81	9.234	
7,300.0	7,110.5	7,158.5	6,968.7	22.1	19.1	-54.73	-620.5	151.2	277.8	248.0	29.85	9.308	
7,350.0	7,136.0	7,200.0	6,987.1	22.1	19.2	-54.08	-619.9	188.3	280.0	250.0	29.95	9.347	
7,400.0	7,158.5	7,239.7	7,002.7	22.2	19.3	-53.56	-619.4	224.8	281.7	251.6	30.15	9.346	
7,450.0	7,177.8	7,280.1	7,016.5	22.2	19.5	-53.16	-618.8	262.8	283.2	252.7	30.46	9.296	
7,500.0	7,193.8	7,320.5	7,028.2	22.4	19.9	-52.87	-618.2	301.4	284.2	253.3	30.90	9.196	
7,550.0	7,206.5	7,360.8	7,037.6	22.6	20.3	-52.70	-617.6	340.6	284.8	253.3	31.49	9.046	
7,600.0	7,215.8	7,400.0	7,044.6	23.0	20.8	-52.64	-617.0	379.2	285.0	252.8	32.20	8.850	
7,650.0	7,221.6	7,441.3	7,049.7	23.5	21.5	-52.69	-616.4	420.2	284.8	251.7	33.11	8.601	
7,700.0	7,223.9	7,481.6	7,052.5	24.1	22.2	-52.86	-615.8	460.4	284.2	250.0	34.16	8.320	
7,708.7	7,224.0	7,488.6	7,052.7	24.2	22.3	-52.90	-615.7	467.4	284.1	249.7	34.36	8.268	
7,751.4	7,224.0	7,526.4	7,053.0	24.8	23.0	-52.95	-615.1	505.1	283.8	248.2	35.62	7.968	
7,800.0	7,224.0	7,574.9	7,053.0	25.6	23.9	-52.95	-614.4	553.6	283.8	246.7	37.15	7.639	
7,900.0	7,224.0	7,674.9	7,053.0	27.5	26.0	-52.95	-612.9	653.6	283.8	243.3	40.53	7.002	
8,000.0	7,224.0	7,774.9	7,053.0	29.6	28.2	-52.95	-611.4	753.6	283.8	239.7	44.13	6.432	
8,100.0	7,224.0	7,874.9	7,053.0	31.8	30.5	-52.95	-609.8	853.6	283.8	235.9	47.89	5.927	
8,200.0	7,224.0	7,974.9	7,053.0	34.1	32.8	-52.95	-608.3	953.6	283.8	232.0	51.78	5.481	
8,300.0	7,224.0	8,074.9	7,053.0	36.5	35.3	-52.95	-606.8	1,053.6	283.8	228.0	55.77	5.089	
8,400.0	7,224.0	8,174.9	7,053.0	38.9	37.8	-52.95	-605.3	1,153.6	283.8	223.9	59.85	4.742	
8,500.0	7,224.0	8,274.9	7,053.0	41.4	40.3	-52.95	-603.8	1,253.6	283.8	219.8	63.99	4.435	
8,600.0	7,224.0	8,374.9	7,053.0	43.9	42.8	-52.95	-602.2	1,353.5	283.8	215.6	68.19	4.162	
8,700.0	7,224.0	8,474.9	7,053.0	46.5	45.4	-52.95	-600.7	1,453.5	283.8	211.3	72.43	3.918	

CC - Min centre to center distance or convergent point, SF - min separation factor, ES - min ellipse separation

<b>Company:</b>	Synergy Resources	<b>Local Co-ordinate Reference:</b>	Well SRC Wiedeman 22-5-4CHZ
<b>Project:</b>	Sec.5-T5N-R66W	<b>TVD Reference:</b>	WELL @ 4796.0ft (RKB - 13')
<b>Reference Site:</b>	SRC Wiedeman Pad Sec.5-T5N-R66W	<b>MD Reference:</b>	WELL @ 4796.0ft (RKB - 13')
<b>Site Error:</b>	0.0ft	<b>North Reference:</b>	True
<b>Reference Well:</b>	SRC Wiedeman 22-5-4CHZ	<b>Survey Calculation Method:</b>	Minimum Curvature
<b>Well Error:</b>	0.0ft	<b>Output errors are at</b>	2.00 sigma
<b>Reference Wellbore</b>	Wellbore #1	<b>Database:</b>	Landmark
<b>Reference Design:</b>	Plan #1 (6-24-14)	<b>Offset TVD Reference:</b>	Offset Datum

Offset Design		SRC Wiedeman Pad Sec.5-T5N-R66W - SRC Wiedeman 22-5-4NHZ - Wellbore #1 - Plan #1 (6-24-14)									Offset Site Error:		0.0 ft		
Survey Program: 0-MWD													Offset Well Error:		0.0 ft
Reference		Offset		Semi Major Axis			Distance							Warning	
Measured Depth (ft)	Vertical Depth (ft)	Measured Depth (ft)	Vertical Depth (ft)	Reference (ft)	Offset (ft)	Highside Toolface (°)	Offset Wellbore Centre +N/-S (ft)	+E/-W (ft)	Between Centres (ft)	Between Ellipses (ft)	Minimum Separation (ft)	Separation Factor			
8,800.0	7,224.0	8,574.9	7,053.0	49.1	48.1	-52.94	-599.2	1,553.5	283.8	207.1	76.71	3.699			
8,900.0	7,224.0	8,674.9	7,053.0	51.7	50.7	-52.94	-597.7	1,653.5	283.8	202.7	81.02	3.502			
9,000.0	7,224.0	8,774.9	7,053.0	54.3	53.3	-52.94	-596.2	1,753.5	283.8	198.4	85.36	3.324			
9,100.0	7,224.0	8,874.9	7,053.0	56.9	56.0	-52.94	-594.7	1,853.5	283.8	194.0	89.72	3.163			
9,200.0	7,224.0	8,974.9	7,053.0	59.6	58.7	-52.94	-593.1	1,953.5	283.8	189.7	94.11	3.015			
9,300.0	7,224.0	9,074.9	7,053.0	62.3	61.4	-52.94	-591.6	2,053.5	283.8	185.2	98.50	2.881			
9,400.0	7,224.0	9,174.9	7,053.0	65.0	64.1	-52.94	-590.1	2,153.5	283.7	180.8	102.92	2.757			
9,500.0	7,224.0	9,274.9	7,053.0	67.6	66.8	-52.94	-588.6	2,253.4	283.7	176.4	107.34	2.643			
9,600.0	7,224.0	9,374.9	7,053.0	70.3	69.5	-52.94	-587.1	2,353.4	283.7	172.0	111.78	2.538			
9,700.0	7,224.0	9,474.9	7,053.0	73.1	72.2	-52.94	-585.5	2,453.4	283.7	167.5	116.23	2.441			
9,800.0	7,224.0	9,574.9	7,053.0	75.8	74.9	-52.94	-584.0	2,553.4	283.7	163.0	120.68	2.351			
9,900.0	7,224.0	9,674.9	7,053.0	78.5	77.7	-52.94	-582.5	2,653.4	283.7	158.6	125.15	2.267			
10,000.0	7,224.0	9,774.9	7,053.0	81.2	80.4	-52.94	-581.0	2,753.4	283.7	154.1	129.62	2.189			
10,100.0	7,224.0	9,874.9	7,053.0	84.0	83.2	-52.94	-579.5	2,853.4	283.7	149.6	134.10	2.116			
10,200.0	7,224.0	9,974.9	7,053.0	86.7	85.9	-52.93	-578.0	2,953.4	283.7	145.1	138.58	2.047			
10,300.0	7,224.0	10,074.9	7,053.0	89.4	88.7	-52.93	-576.4	3,053.4	283.7	140.6	143.07	1.983			
10,400.0	7,224.0	10,174.9	7,053.0	92.2	91.4	-52.93	-574.9	3,153.3	283.7	136.1	147.57	1.923			
10,500.0	7,224.0	10,274.9	7,053.0	94.9	94.2	-52.93	-573.4	3,253.3	283.7	131.6	152.07	1.866			
10,600.0	7,224.0	10,374.9	7,053.0	97.7	96.9	-52.93	-571.9	3,353.3	283.7	127.1	156.57	1.812			
10,700.0	7,224.0	10,474.9	7,053.0	100.4	99.7	-52.93	-570.4	3,453.3	283.7	122.6	161.07	1.761			
10,800.0	7,224.0	10,574.9	7,053.0	103.2	102.5	-52.93	-568.8	3,553.3	283.7	118.1	165.58	1.713			
10,900.0	7,224.0	10,674.9	7,053.0	105.9	105.2	-52.93	-567.3	3,653.3	283.7	113.6	170.10	1.668			
11,000.0	7,224.0	10,774.9	7,053.0	108.7	108.0	-52.93	-565.8	3,753.3	283.7	109.1	174.61	1.625			
11,100.0	7,224.0	10,874.9	7,053.0	111.5	110.8	-52.93	-564.3	3,853.3	283.7	104.5	179.13	1.584			
11,200.0	7,224.0	10,974.9	7,053.0	114.2	113.5	-52.93	-562.8	3,953.2	283.7	100.0	183.65	1.545			
11,300.0	7,224.0	11,074.9	7,053.0	117.0	116.3	-52.93	-561.3	4,053.2	283.7	95.5	188.17	1.507			
11,400.0	7,224.0	11,174.9	7,053.0	119.8	119.1	-52.93	-559.7	4,153.2	283.7	91.0	192.70	1.472 Level 3			
11,500.0	7,224.0	11,274.9	7,053.0	122.5	121.9	-52.93	-558.2	4,253.2	283.6	86.4	197.22	1.438 Level 3			
11,600.0	7,224.0	11,374.9	7,053.0	125.3	124.6	-52.92	-556.7	4,353.2	283.6	81.9	201.75	1.406 Level 3			
11,700.0	7,224.0	11,474.9	7,053.0	128.1	127.4	-52.92	-555.2	4,453.2	283.6	77.4	206.28	1.375 Level 3			
11,800.0	7,224.0	11,574.9	7,053.0	130.9	130.2	-52.92	-553.7	4,553.2	283.6	72.8	210.81	1.345 Level 3			
11,824.1	7,224.0	11,599.0	7,053.0	131.5	130.9	-52.92	-553.3	4,577.3	283.6	71.7	211.91	1.338 Level 3, SF			

<b>Company:</b>	Synergy Resources	<b>Local Co-ordinate Reference:</b>	Well SRC Wiedeman 22-5-4CHZ
<b>Project:</b>	Sec.5-T5N-R66W	<b>TVD Reference:</b>	WELL @ 4796.0ft (RKB - 13')
<b>Reference Site:</b>	SRC Wiedeman Pad Sec.5-T5N-R66W	<b>MD Reference:</b>	WELL @ 4796.0ft (RKB - 13')
<b>Site Error:</b>	0.0ft	<b>North Reference:</b>	True
<b>Reference Well:</b>	SRC Wiedeman 22-5-4CHZ	<b>Survey Calculation Method:</b>	Minimum Curvature
<b>Well Error:</b>	0.0ft	<b>Output errors are at</b>	2.00 sigma
<b>Reference Wellbore</b>	Wellbore #1	<b>Database:</b>	Landmark
<b>Reference Design:</b>	Plan #1 (6-24-14)	<b>Offset TVD Reference:</b>	Offset Datum

Offset Design SRC Wiedeman Pad Sec.5-T5N-R66W - SRC Wiedeman A-5-4CHZ - Wellbore #1 - Plan #1 (6-24-14)													Offset Site Error:	0.0 ft
Survey Program: 0-MWD													Offset Well Error:	0.0 ft
Measured Depth (ft)	Vertical Depth (ft)	Measured Depth (ft)	Vertical Depth (ft)	Reference (ft)	Offset (ft)	Semi Major Axis Highside Toolface (°)	Offset Wellbore Centre +N/-S (ft)	+E/-W (ft)	Between Centres (ft)	Between Ellipses (ft)	Minimum Separation (ft)	Separation Factor	Warning	
0.0	0.0	0.0	0.0	0.0	0.0	5.32	29.9	2.8	30.0					
100.0	100.0	100.0	100.0	0.1	0.1	5.32	29.9	2.8	30.0	29.8	0.22	133.486		
200.0	200.0	200.0	200.0	0.3	0.3	5.32	29.9	2.8	30.0	29.3	0.67	44.495		
300.0	300.0	300.0	300.0	0.6	0.6	5.32	29.9	2.8	30.0	28.9	1.12	26.697		
400.0	400.0	400.0	400.0	0.8	0.8	5.32	29.9	2.8	30.0	28.4	1.57	19.069		
500.0	500.0	500.0	500.0	1.0	1.0	5.32	29.9	2.8	30.0	28.0	2.02	14.832		
600.0	600.0	600.0	600.0	1.2	1.2	5.32	29.9	2.8	30.0	27.5	2.47	12.135		
700.0	700.0	700.0	700.0	1.5	1.5	5.32	29.9	2.8	30.0	27.1	2.92	10.268		
800.0	800.0	800.0	800.0	1.7	1.7	5.32	29.9	2.8	30.0	26.6	3.37	8.899 CC, ES		
900.0	900.0	900.0	900.0	1.9	1.9	169.57	29.9	2.8	31.7	27.9	3.79	8.360		
1,000.0	999.8	999.8	999.8	2.1	2.1	171.03	29.9	2.8	36.9	32.7	4.20	8.790		
1,100.0	1,099.5	1,099.5	1,099.5	2.3	2.4	172.72	29.9	2.8	45.5	40.9	4.60	9.888		
1,200.0	1,198.7	1,198.7	1,198.7	2.5	2.6	174.23	29.9	2.8	57.6	52.6	5.01	11.496		
1,304.8	1,302.2	1,304.8	1,304.7	2.8	2.8	175.15	28.1	2.0	72.2	66.8	5.42	13.336		
1,400.0	1,395.9	1,401.8	1,401.7	3.1	3.0	175.27	23.5	-0.3	84.0	78.2	5.78	14.522		
1,500.0	1,494.4	1,503.9	1,503.4	3.4	3.2	174.85	15.4	-4.2	93.0	86.8	6.18	15.035		
1,600.0	1,592.8	1,603.6	1,602.6	3.7	3.4	174.34	6.4	-8.5	100.8	94.2	6.60	15.271		
1,700.0	1,691.3	1,703.3	1,701.7	4.1	3.6	173.90	-2.6	-12.8	108.7	101.7	7.03	15.456		
1,800.0	1,789.7	1,803.0	1,800.9	4.4	3.8	173.52	-11.5	-17.1	116.6	109.1	7.47	15.602		
1,900.0	1,888.2	1,902.7	1,900.1	4.8	4.1	173.18	-20.5	-21.4	124.4	116.5	7.92	15.716		
2,000.0	1,986.6	2,002.4	1,999.3	5.2	4.3	172.89	-29.5	-25.7	132.3	123.9	8.37	15.807		
2,100.0	2,085.1	2,102.1	2,098.5	5.5	4.5	172.63	-38.5	-30.0	140.2	131.4	8.83	15.879		
2,200.0	2,183.5	2,201.7	2,197.7	5.9	4.8	172.40	-47.5	-34.3	148.1	138.8	9.29	15.936		
2,300.0	2,282.0	2,301.4	2,296.9	6.3	5.1	172.19	-56.4	-38.6	155.9	146.2	9.76	15.981		
2,400.0	2,380.4	2,401.1	2,396.1	6.7	5.3	172.00	-65.4	-42.9	163.8	153.6	10.23	16.016		
2,500.0	2,478.9	2,500.8	2,495.3	7.1	5.6	171.83	-74.4	-47.2	171.7	161.0	10.70	16.043		
2,600.0	2,577.3	2,600.5	2,594.4	7.5	5.9	171.67	-83.4	-51.5	179.6	168.4	11.18	16.065		
2,700.0	2,675.8	2,700.2	2,693.6	7.9	6.1	171.53	-92.4	-55.8	187.5	175.8	11.66	16.081		
2,800.0	2,774.2	2,799.9	2,792.8	8.3	6.4	171.40	-101.3	-60.1	195.4	183.2	12.14	16.093		
2,900.0	2,872.7	2,899.6	2,892.0	8.7	6.7	171.28	-110.3	-64.4	203.3	190.6	12.62	16.102		
3,000.0	2,971.1	2,999.2	2,991.2	9.1	7.0	171.16	-119.3	-68.7	211.2	198.1	13.11	16.108		
3,100.0	3,069.6	3,098.9	3,090.4	9.5	7.3	171.06	-128.3	-73.0	219.1	205.5	13.60	16.112		
3,200.0	3,168.0	3,198.6	3,189.6	9.9	7.5	170.96	-137.3	-77.3	226.9	212.9	14.08	16.114		
3,300.0	3,266.5	3,298.3	3,288.8	10.3	7.8	170.87	-146.2	-81.6	234.8	220.3	14.57	16.115		
3,400.0	3,365.0	3,398.0	3,388.0	10.7	8.1	170.79	-155.2	-85.9	242.7	227.7	15.06	16.114		
3,500.0	3,463.4	3,497.7	3,487.1	11.1	8.4	170.71	-164.2	-90.2	250.6	235.1	15.55	16.112		
3,600.0	3,561.9	3,597.4	3,586.3	11.5	8.7	170.63	-173.2	-94.5	258.5	242.5	16.05	16.110		
3,700.0	3,660.3	3,697.1	3,685.5	11.9	9.0	170.56	-182.2	-98.8	266.4	249.9	16.54	16.107		
3,800.0	3,758.8	3,796.7	3,784.7	12.3	9.3	170.50	-191.1	-103.1	274.3	257.3	17.03	16.103		
3,900.0	3,857.2	3,896.4	3,883.9	12.7	9.5	170.44	-200.1	-107.4	282.2	264.7	17.53	16.099		
4,000.0	3,955.7	3,996.1	3,983.1	13.1	9.8	170.38	-209.1	-111.7	290.1	272.1	18.02	16.094		
4,100.0	4,054.1	4,095.8	4,082.3	13.5	10.1	170.32	-218.1	-116.0	298.0	279.5	18.52	16.090		
4,200.0	4,152.6	4,195.5	4,181.5	13.9	10.4	170.27	-227.1	-120.3	305.9	286.9	19.02	16.085		
4,300.0	4,251.0	4,295.2	4,280.7	14.3	10.7	170.22	-236.0	-124.6	313.8	294.3	19.51	16.079		
4,400.0	4,349.5	4,394.9	4,379.8	14.7	11.0	170.17	-245.0	-128.9	321.7	301.7	20.01	16.074		
4,500.0	4,447.9	4,494.6	4,479.0	15.1	11.3	170.12	-254.0	-133.2	329.6	309.1	20.51	16.069		
4,600.0	4,546.4	4,594.2	4,578.2	15.5	11.6	170.08	-263.0	-137.5	337.5	316.5	21.01	16.063		
4,700.0	4,644.8	4,693.9	4,677.4	15.9	11.9	170.04	-271.9	-141.8	345.4	323.9	21.51	16.058		
4,800.0	4,743.3	4,793.6	4,776.6	16.3	12.2	170.00	-280.9	-146.1	353.3	331.3	22.01	16.052		
4,900.0	4,841.7	4,893.3	4,875.8	16.7	12.4	169.96	-289.9	-150.4	361.2	338.7	22.51	16.047		
5,000.0	4,940.2	4,993.0	4,975.0	17.1	12.7	169.93	-298.9	-154.7	369.1	346.1	23.01	16.041		
5,100.0	5,038.6	5,092.7	5,074.2	17.5	13.0	169.89	-307.9	-159.1	377.0	353.4	23.51	16.036		

CC - Min centre to center distance or convergent point, SF - min separation factor, ES - min ellipse separation

<b>Company:</b>	Synergy Resources	<b>Local Co-ordinate Reference:</b>	Well SRC Wiedeman 22-5-4CHZ
<b>Project:</b>	Sec.5-T5N-R66W	<b>TVD Reference:</b>	WELL @ 4796.0ft (RKB - 13')
<b>Reference Site:</b>	SRC Wiedeman Pad Sec.5-T5N-R66W	<b>MD Reference:</b>	WELL @ 4796.0ft (RKB - 13')
<b>Site Error:</b>	0.0ft	<b>North Reference:</b>	True
<b>Reference Well:</b>	SRC Wiedeman 22-5-4CHZ	<b>Survey Calculation Method:</b>	Minimum Curvature
<b>Well Error:</b>	0.0ft	<b>Output errors are at</b>	2.00 sigma
<b>Reference Wellbore</b>	Wellbore #1	<b>Database:</b>	Landmark
<b>Reference Design:</b>	Plan #1 (6-24-14)	<b>Offset TVD Reference:</b>	Offset Datum

Offset Design												Offset Site Error:	0.0 ft
Survey Program: 0-MWDD												Offset Well Error:	0.0 ft
Reference		Offset		Semi Major Axis			Distance						
Measured Depth (ft)	Vertical Depth (ft)	Measured Depth (ft)	Vertical Depth (ft)	Reference (ft)	Offset (ft)	Highside Toolface (°)	Offset Wellbore Centre +N/-S (ft)	+E/-W (ft)	Between Centres (ft)	Between Ellipses (ft)	Minimum Separation (ft)	Separation Factor	Warning
5,200.0	5,137.1	5,192.4	5,173.4	17.9	13.3	169.86	-316.8	-163.4	384.9	360.8	24.01	16.030	
5,300.0	5,235.5	5,292.1	5,272.5	18.3	13.6	169.83	-325.8	-167.7	392.8	368.2	24.51	16.025	
5,400.0	5,334.0	5,391.7	5,371.7	18.7	13.9	169.80	-334.8	-172.0	400.6	375.6	25.01	16.020	
5,500.0	5,432.4	5,491.4	5,470.9	19.1	14.2	169.77	-343.8	-176.3	408.5	383.0	25.51	16.014	
5,600.0	5,530.9	5,591.1	5,570.1	19.5	14.5	169.74	-352.8	-180.6	416.4	390.4	26.01	16.009	
5,700.0	5,629.3	5,690.8	5,669.3	19.9	14.8	169.71	-361.7	-184.9	424.3	397.8	26.51	16.004	
5,800.0	5,727.8	5,790.5	5,768.5	20.3	15.1	169.68	-370.7	-189.2	432.2	405.2	27.02	15.999	
5,871.1	5,797.8	5,861.4	5,839.0	20.6	15.3	169.67	-377.1	-192.2	437.9	410.5	27.37	15.995	
5,900.0	5,826.3	5,890.2	5,867.7	20.7	15.4	169.66	-379.7	-193.5	440.0	412.5	27.52	15.986	
6,000.0	5,925.2	5,990.0	5,967.0	21.0	15.7	169.59	-388.7	-197.8	445.2	417.2	28.01	15.897	
6,100.0	6,024.5	6,083.2	6,059.8	21.2	15.9	169.46	-396.8	-201.6	447.4	418.9	28.43	15.737	
6,200.0	6,124.2	6,170.4	6,146.8	21.4	16.1	169.37	-402.2	-204.2	448.6	419.9	28.77	15.595	
6,300.0	6,224.1	6,257.6	6,233.8	21.5	16.3	169.32	-405.2	-205.7	449.4	420.3	29.06	15.465	
6,375.9	6,300.0	6,323.7	6,300.0	21.6	16.4	5.66	-405.9	-206.0	449.5	411.9	37.60	11.956	
6,383.9	6,308.0	6,331.7	6,308.0	21.6	16.4	5.66	-405.9	-206.0	449.5	411.9	37.62	11.948	
6,400.0	6,324.1	6,347.8	6,324.1	21.7	16.4	5.66	-405.9	-206.0	449.5	411.9	37.67	11.933	
6,500.0	6,424.1	6,447.8	6,424.1	21.8	16.6	5.66	-405.9	-206.0	449.5	411.6	37.95	11.847	
6,555.5	6,479.6	6,503.3	6,479.6	21.8	16.7	5.66	-405.9	-206.0	449.5	411.4	38.10	11.800	
6,583.7	6,507.8	6,531.4	6,507.7	21.9	16.7	5.66	-405.9	-206.0	449.5	411.4	38.17	11.777	
6,600.0	6,524.1	6,546.6	6,522.9	21.9	16.7	-83.47	-405.9	-205.8	449.5	419.5	30.04	14.963	
6,650.0	6,574.0	6,593.3	6,569.5	21.9	16.8	-83.49	-405.8	-203.3	449.5	419.3	30.18	14.896	
6,700.0	6,623.6	6,640.0	6,615.9	22.0	16.8	-83.53	-405.7	-197.7	449.5	419.2	30.29	14.839	
6,750.0	6,672.6	6,686.7	6,661.8	22.0	16.9	-83.61	-405.6	-189.0	449.4	419.0	30.39	14.789	
6,800.0	6,720.8	6,733.5	6,707.1	22.0	16.9	-83.71	-405.4	-177.4	449.3	418.8	30.47	14.746	
6,850.0	6,768.0	6,780.3	6,751.5	22.0	17.0	-83.84	-405.2	-162.9	449.2	418.7	30.55	14.706	
6,900.0	6,813.9	6,827.2	6,795.0	22.1	17.0	-84.00	-404.9	-145.5	449.1	418.4	30.62	14.666	
6,950.0	6,858.3	6,874.1	6,837.4	22.1	17.0	-84.19	-404.6	-125.2	448.9	418.2	30.70	14.621	
7,000.0	6,901.0	6,921.2	6,878.4	22.0	17.0	-84.41	-404.3	-102.1	448.7	417.9	30.81	14.566	
7,050.0	6,941.8	6,968.3	6,917.8	22.0	17.0	-84.65	-403.9	-76.3	448.6	417.6	30.95	14.494	
7,100.0	6,980.5	7,015.6	6,955.6	22.0	17.0	-84.92	-403.5	-48.0	448.4	417.2	31.14	14.397	
7,150.0	7,016.9	7,063.0	6,991.5	22.0	17.1	-85.21	-403.0	-17.1	448.2	416.8	31.41	14.269	
7,200.0	7,050.8	7,110.5	7,025.4	22.0	17.1	-85.52	-402.5	16.2	448.0	416.2	31.77	14.101	
7,250.0	7,082.0	7,158.2	7,057.2	22.0	17.1	-85.85	-402.0	51.8	447.8	415.5	32.24	13.889	
7,300.0	7,110.5	7,206.0	7,086.5	22.1	17.1	-86.21	-401.4	89.6	447.6	414.7	32.84	13.630	
7,350.0	7,136.0	7,254.1	7,113.4	22.1	17.2	-86.58	-400.8	129.4	447.4	413.8	33.58	13.321	
7,400.0	7,158.5	7,302.3	7,137.6	22.2	17.3	-86.97	-400.2	171.1	447.2	412.7	34.49	12.966	
7,450.0	7,177.8	7,350.0	7,158.8	22.2	17.6	-87.37	-399.5	213.8	447.0	411.5	35.55	12.575	
7,500.0	7,193.8	7,399.3	7,177.7	22.4	18.2	-87.79	-398.8	259.3	446.9	410.1	36.79	12.146	
7,550.0	7,206.5	7,448.1	7,193.2	22.6	18.8	-88.22	-398.1	305.6	446.8	408.6	38.19	11.699	
7,600.0	7,215.8	7,497.2	7,205.6	23.0	19.6	-88.66	-397.4	353.1	446.7	406.9	39.74	11.241	
7,650.0	7,221.6	7,546.4	7,214.7	23.5	20.4	-89.11	-396.7	401.5	446.6	405.2	41.42	10.783	
7,700.0	7,223.9	7,596.0	7,220.5	24.1	21.3	-89.56	-395.9	450.6	446.5	403.3	43.22	10.333	
7,708.7	7,224.0	7,604.6	7,221.2	24.2	21.4	-89.64	-395.8	459.3	446.5	403.0	43.54	10.255	
7,800.0	7,224.0	7,695.7	7,223.0	25.6	23.2	-89.87	-394.4	550.3	446.5	399.4	47.08	9.485	
7,900.0	7,224.0	7,795.7	7,223.0	27.5	25.3	-89.87	-392.9	650.3	446.5	395.3	51.25	8.713	
8,000.0	7,224.0	7,895.7	7,223.0	29.6	27.5	-89.87	-391.4	750.3	446.5	390.8	55.67	8.021	
8,100.0	7,224.0	7,995.7	7,223.0	31.8	29.8	-89.87	-389.9	850.3	446.5	386.2	60.28	7.406	
8,200.0	7,224.0	8,095.7	7,223.0	34.1	32.2	-89.87	-388.4	950.3	446.5	381.4	65.06	6.863	
8,300.0	7,224.0	8,195.7	7,223.0	36.5	34.6	-89.87	-386.9	1,050.3	446.5	376.5	69.96	6.382	
8,400.0	7,224.0	8,295.7	7,223.0	38.9	37.1	-89.87	-385.3	1,150.3	446.5	371.5	74.96	5.956	
8,500.0	7,224.0	8,395.7	7,223.0	41.4	39.6	-89.87	-383.8	1,250.2	446.4	366.4	80.04	5.578	
8,600.0	7,224.0	8,495.7	7,223.0	43.9	42.2	-89.87	-382.3	1,350.2	446.4	361.2	85.18	5.241	

CC - Min centre to center distance or convergent point, SF - min separation factor, ES - min ellipse separation

<b>Company:</b>	Synergy Resources	<b>Local Co-ordinate Reference:</b>	Well SRC Wiedeman 22-5-4CHZ
<b>Project:</b>	Sec.5-T5N-R66W	<b>TVD Reference:</b>	WELL @ 4796.0ft (RKB - 13')
<b>Reference Site:</b>	SRC Wiedeman Pad Sec.5-T5N-R66W	<b>MD Reference:</b>	WELL @ 4796.0ft (RKB - 13')
<b>Site Error:</b>	0.0ft	<b>North Reference:</b>	True
<b>Reference Well:</b>	SRC Wiedeman 22-5-4CHZ	<b>Survey Calculation Method:</b>	Minimum Curvature
<b>Well Error:</b>	0.0ft	<b>Output errors are at</b>	2.00 sigma
<b>Reference Wellbore</b>	Wellbore #1	<b>Database:</b>	Landmark
<b>Reference Design:</b>	Plan #1 (6-24-14)	<b>Offset TVD Reference:</b>	Offset Datum

<b>Offset Design</b> SRC Wiedeman Pad Sec.5-T5N-R66W - SRC Wiedeman A-5-4CHZ - Wellbore #1 - Plan #1 (6-24-14)												<b>Offset Site Error:</b>	0.0 ft
Survey Program: 0-MWD												<b>Offset Well Error:</b>	0.0 ft
Reference		Offset		Semi Major Axis			Distance						
Measured Depth (ft)	Vertical Depth (ft)	Measured Depth (ft)	Vertical Depth (ft)	Reference (ft)	Offset (ft)	Highside Toolface (°)	Offset Wellbore Centre +N/-S (ft)	+E/-W (ft)	Between Centres (ft)	Between Ellipses (ft)	Minimum Separation (ft)	Separation Factor	Warning
8,700.0	7,224.0	8,595.7	7,223.0	46.5	44.8	-89.87	-380.8	1,450.2	446.4	356.0	90.39	4.939	
8,800.0	7,224.0	8,695.7	7,223.0	49.1	47.4	-89.87	-379.3	1,550.2	446.4	350.8	95.63	4.668	
8,900.0	7,224.0	8,795.7	7,223.0	51.7	50.1	-89.87	-377.8	1,650.2	446.4	345.5	100.92	4.423	
9,000.0	7,224.0	8,895.7	7,223.0	54.3	52.7	-89.87	-376.3	1,750.2	446.4	340.1	106.24	4.202	
9,100.0	7,224.0	8,995.7	7,223.0	56.9	55.4	-89.87	-374.8	1,850.2	446.4	334.8	111.59	4.000	
9,200.0	7,224.0	9,095.7	7,223.0	59.6	58.1	-89.87	-373.3	1,950.2	446.4	329.4	116.96	3.816	
9,300.0	7,224.0	9,195.7	7,223.0	62.3	60.8	-89.87	-371.7	2,050.2	446.3	324.0	122.36	3.648	
9,400.0	7,224.0	9,295.7	7,223.0	65.0	63.5	-89.87	-370.2	2,150.1	446.3	318.6	127.77	3.493	
9,500.0	7,224.0	9,395.7	7,223.0	67.6	66.2	-89.87	-368.7	2,250.1	446.3	313.1	133.20	3.351	
9,600.0	7,224.0	9,495.7	7,223.0	70.3	68.9	-89.87	-367.2	2,350.1	446.3	307.7	138.65	3.219	
9,700.0	7,224.0	9,595.7	7,223.0	73.1	71.6	-89.87	-365.7	2,450.1	446.3	302.2	144.10	3.097	
9,800.0	7,224.0	9,695.7	7,223.0	75.8	74.4	-89.87	-364.2	2,550.1	446.3	296.7	149.57	2.984	
9,900.0	7,224.0	9,795.7	7,223.0	78.5	77.1	-89.87	-362.7	2,650.1	446.3	291.2	155.05	2.878	
10,000.0	7,224.0	9,895.7	7,223.0	81.2	79.9	-89.87	-361.2	2,750.1	446.3	285.7	160.54	2.780	
10,100.0	7,224.0	9,995.7	7,223.0	84.0	82.6	-89.87	-359.6	2,850.1	446.2	280.2	166.03	2.688	
10,200.0	7,224.0	10,095.7	7,223.0	86.7	85.4	-89.87	-358.1	2,950.1	446.2	274.7	171.53	2.601	
10,300.0	7,224.0	10,195.7	7,223.0	89.4	88.1	-89.87	-356.6	3,050.0	446.2	269.2	177.04	2.520	
10,400.0	7,224.0	10,295.7	7,223.0	92.2	90.9	-89.87	-355.1	3,150.0	446.2	263.6	182.56	2.444	
10,500.0	7,224.0	10,395.7	7,223.0	94.9	93.6	-89.87	-353.6	3,250.0	446.2	258.1	188.08	2.372	
10,600.0	7,224.0	10,495.7	7,223.0	97.7	96.4	-89.87	-352.1	3,350.0	446.2	252.6	193.61	2.305	
10,700.0	7,224.0	10,595.7	7,223.0	100.4	99.2	-89.87	-350.6	3,450.0	446.2	247.0	199.14	2.240	
10,800.0	7,224.0	10,695.7	7,223.0	103.2	101.9	-89.87	-349.1	3,550.0	446.2	241.5	204.67	2.180	
10,900.0	7,224.0	10,795.7	7,223.0	105.9	104.7	-89.87	-347.6	3,650.0	446.1	235.9	210.21	2.122	
11,000.0	7,224.0	10,895.7	7,223.0	108.7	107.5	-89.87	-346.0	3,750.0	446.1	230.4	215.76	2.068	
11,100.0	7,224.0	10,995.7	7,223.0	111.5	110.2	-89.87	-344.5	3,850.0	446.1	224.8	221.30	2.016	
11,200.0	7,224.0	11,095.7	7,223.0	114.2	113.0	-89.87	-343.0	3,949.9	446.1	219.3	226.85	1.967	
11,300.0	7,224.0	11,195.7	7,223.0	117.0	115.8	-89.87	-341.5	4,049.9	446.1	213.7	232.41	1.919	
11,400.0	7,224.0	11,295.7	7,223.0	119.8	118.6	-89.87	-340.0	4,149.9	446.1	208.1	237.96	1.875	
11,500.0	7,224.0	11,395.7	7,223.0	122.5	121.3	-89.87	-338.5	4,249.9	446.1	202.6	243.52	1.832	
11,600.0	7,224.0	11,495.7	7,223.0	125.3	124.1	-89.87	-337.0	4,349.9	446.1	197.0	249.08	1.791	
11,700.0	7,224.0	11,595.7	7,223.0	128.1	126.9	-89.87	-335.5	4,449.9	446.0	191.4	254.64	1.752	
11,800.0	7,224.0	11,695.7	7,223.0	130.9	129.7	-89.87	-333.9	4,549.9	446.0	185.8	260.21	1.714	
11,824.1	7,224.0	11,719.8	7,223.0	131.5	130.4	-89.87	-333.6	4,574.0	446.0	184.5	261.55	1.705 SF	

<b>Company:</b>	Synergy Resources	<b>Local Co-ordinate Reference:</b>	Well SRC Wiedeman 22-5-4CHZ
<b>Project:</b>	Sec.5-T5N-R66W	<b>TVD Reference:</b>	WELL @ 4796.0ft (RKB - 13')
<b>Reference Site:</b>	SRC Wiedeman Pad Sec.5-T5N-R66W	<b>MD Reference:</b>	WELL @ 4796.0ft (RKB - 13')
<b>Site Error:</b>	0.0ft	<b>North Reference:</b>	True
<b>Reference Well:</b>	SRC Wiedeman 22-5-4CHZ	<b>Survey Calculation Method:</b>	Minimum Curvature
<b>Well Error:</b>	0.0ft	<b>Output errors are at</b>	2.00 sigma
<b>Reference Wellbore</b>	Wellbore #1	<b>Database:</b>	Landmark
<b>Reference Design:</b>	Plan #1 (6-24-14)	<b>Offset TVD Reference:</b>	Offset Datum

Offset Design SRC Wiedeman Pad Sec.5-T5N-R66W - SRC Wiedeman A-5-4NHZ - Wellbore #1 - Plan #1 (6-24-14)													Offset Site Error:	0.0ft
Survey Program: 0-MWD													Offset Well Error:	0.0ft
Reference		Offset		Semi Major Axis			Distance							Warning
Measured Depth (ft)	Vertical Depth (ft)	Measured Depth (ft)	Vertical Depth (ft)	Reference (ft)	Offset (ft)	Highside Toolface (°)	Offset Wellbore Centre +N/-S (ft)	+E/-W (ft)	Between Centres (ft)	Between Ellipses (ft)	Minimum Separation (ft)	Separation Factor		
0.0	0.0	0.0	0.0	0.0	0.0	5.32	44.8	4.2	45.0					
100.0	100.0	100.0	100.0	0.1	0.1	5.32	44.8	4.2	45.0	44.8	0.22	200.230		
200.0	200.0	200.0	200.0	0.3	0.3	5.32	44.8	4.2	45.0	44.3	0.67	66.743		
300.0	300.0	300.0	300.0	0.6	0.6	5.32	44.8	4.2	45.0	43.9	1.12	40.046		
400.0	400.0	400.0	400.0	0.8	0.8	5.32	44.8	4.2	45.0	43.4	1.57	28.604		
500.0	500.0	500.0	500.0	1.0	1.0	5.32	44.8	4.2	45.0	43.0	2.02	22.248		
600.0	600.0	600.0	600.0	1.2	1.2	5.32	44.8	4.2	45.0	42.5	2.47	18.203		
700.0	700.0	700.0	700.0	1.5	1.5	5.32	44.8	4.2	45.0	42.1	2.92	15.402		
800.0	800.0	800.0	800.0	1.7	1.7	5.32	44.8	4.2	45.0	41.6	3.37	13.349 CC, ES		
900.0	900.0	900.0	900.0	1.9	1.9	169.38	44.8	4.2	46.7	42.9	3.79	12.314		
1,000.0	999.8	999.8	999.8	2.1	2.1	170.43	44.8	4.2	51.9	47.7	4.20	12.364		
1,100.0	1,099.5	1,099.5	1,099.5	2.3	2.4	171.77	44.8	4.2	60.5	55.9	4.60	13.142		
1,200.0	1,198.7	1,198.7	1,198.7	2.5	2.6	173.12	44.8	4.2	72.6	67.6	5.01	14.478		
1,304.8	1,302.2	1,302.2	1,302.2	2.8	2.8	174.36	44.8	4.2	88.9	83.5	5.44	16.341		
1,400.0	1,395.9	1,395.9	1,395.9	3.1	3.0	175.25	44.8	4.2	105.6	99.7	5.85	18.035		
1,500.0	1,494.4	1,498.1	1,498.1	3.4	3.2	175.59	43.5	3.1	121.6	115.3	6.27	19.389		
1,600.0	1,592.8	1,601.3	1,601.2	3.7	3.4	175.12	39.3	-0.3	134.5	127.8	6.68	20.143		
1,700.0	1,691.3	1,704.2	1,703.7	4.1	3.6	174.06	32.4	-6.0	144.3	137.2	7.10	20.334		
1,800.0	1,789.7	1,803.8	1,802.8	4.4	3.8	172.97	24.8	-12.2	153.3	145.7	7.53	20.351		
1,900.0	1,888.2	1,903.4	1,901.8	4.8	4.0	172.00	17.3	-18.4	162.3	154.3	7.98	20.344		
2,000.0	1,986.6	2,002.9	2,000.9	5.2	4.3	171.13	9.7	-24.6	171.3	162.8	8.43	20.319		
2,100.0	2,085.1	2,102.5	2,100.0	5.5	4.5	170.35	2.2	-30.7	180.3	171.4	8.89	20.281		
2,200.0	2,183.5	2,202.0	2,199.1	5.9	4.7	169.64	-5.4	-36.9	189.4	180.1	9.36	20.233		
2,300.0	2,282.0	2,301.6	2,298.2	6.3	5.0	169.00	-12.9	-43.1	198.5	188.7	9.84	20.179		
2,400.0	2,380.4	2,401.2	2,397.2	6.7	5.2	168.41	-20.5	-49.3	207.7	197.4	10.32	20.120		
2,500.0	2,478.9	2,500.7	2,496.3	7.1	5.5	167.88	-28.1	-55.5	216.8	206.0	10.81	20.058		
2,600.0	2,577.3	2,600.3	2,595.4	7.5	5.8	167.38	-35.6	-61.7	226.0	214.7	11.30	19.994		
2,700.0	2,675.8	2,699.8	2,694.5	7.9	6.0	166.93	-43.2	-67.9	235.2	223.4	11.80	19.929		
2,800.0	2,774.2	2,799.4	2,793.6	8.3	6.3	166.51	-50.7	-74.1	244.4	232.1	12.30	19.865		
2,900.0	2,872.7	2,899.0	2,892.6	8.7	6.5	166.12	-58.3	-80.2	253.6	240.8	12.81	19.801		
3,000.0	2,971.1	2,998.5	2,991.7	9.1	6.8	165.76	-65.8	-86.4	262.8	249.5	13.32	19.737		
3,100.0	3,069.6	3,098.1	3,090.8	9.5	7.1	165.42	-73.4	-92.6	272.1	258.3	13.83	19.675		
3,200.0	3,168.0	3,197.6	3,189.9	9.9	7.4	165.10	-81.0	-98.8	281.3	267.0	14.34	19.615		
3,300.0	3,266.5	3,297.2	3,289.0	10.3	7.6	164.81	-88.5	-105.0	290.6	275.7	14.86	19.556		
3,400.0	3,365.0	3,396.8	3,388.0	10.7	7.9	164.53	-96.1	-111.2	299.8	284.5	15.38	19.498		
3,500.0	3,463.4	3,496.3	3,487.1	11.1	8.2	164.27	-103.6	-117.4	309.1	293.2	15.90	19.442		
3,600.0	3,561.9	3,595.9	3,586.2	11.5	8.5	164.02	-111.2	-123.5	318.4	302.0	16.42	19.388		
3,700.0	3,660.3	3,695.4	3,685.3	11.9	8.8	163.79	-118.7	-129.7	327.7	310.7	16.95	19.336		
3,800.0	3,758.8	3,795.0	3,784.4	12.3	9.0	163.57	-126.3	-135.9	336.9	319.5	17.47	19.285		
3,900.0	3,857.2	3,894.6	3,883.4	12.7	9.3	163.37	-133.9	-142.1	346.2	328.2	18.00	19.236		
4,000.0	3,955.7	3,994.1	3,982.5	13.1	9.6	163.17	-141.4	-148.3	355.5	337.0	18.53	19.189		
4,100.0	4,054.1	4,093.7	4,081.6	13.5	9.9	162.98	-149.0	-154.5	364.8	345.8	19.06	19.143		
4,200.0	4,152.6	4,193.2	4,180.7	13.9	10.2	162.81	-156.5	-160.7	374.1	354.5	19.59	19.099		
4,300.0	4,251.0	4,292.8	4,279.8	14.3	10.5	162.64	-164.1	-166.9	383.4	363.3	20.12	19.056		
4,400.0	4,349.5	4,392.4	4,378.8	14.7	10.7	162.48	-171.6	-173.0	392.7	372.1	20.65	19.015		
4,500.0	4,447.9	4,486.2	4,472.3	15.1	11.0	162.38	-178.4	-178.6	402.5	381.3	21.16	19.023		
4,600.0	4,546.4	4,575.8	4,561.6	15.5	11.2	162.53	-182.8	-182.2	414.4	392.8	21.60	19.185		
4,700.0	4,644.8	4,664.7	4,650.5	15.9	11.3	162.90	-185.1	-184.0	428.6	406.6	22.01	19.475		
4,800.0	4,743.3	4,757.4	4,743.3	16.3	11.5	163.49	-185.4	-184.3	445.1	422.7	22.41	19.861		
4,900.0	4,841.7	4,855.9	4,841.7	16.7	11.7	164.11	-185.4	-184.3	461.9	439.1	22.82	20.247		
5,000.0	4,940.2	4,954.4	4,940.2	17.1	11.9	164.68	-185.4	-184.3	478.8	455.6	23.22	20.618		
5,100.0	5,038.6	5,052.8	5,038.6	17.5	12.0	165.22	-185.4	-184.3	495.8	472.1	23.64	20.975		

CC - Min centre to center distance or convergent point, SF - min separation factor, ES - min ellipse separation

<b>Company:</b>	Synergy Resources	<b>Local Co-ordinate Reference:</b>	Well SRC Wiedeman 22-5-4CHZ
<b>Project:</b>	Sec.5-T5N-R66W	<b>TVD Reference:</b>	WELL @ 4796.0ft (RKB - 13')
<b>Reference Site:</b>	SRC Wiedeman Pad Sec.5-T5N-R66W	<b>MD Reference:</b>	WELL @ 4796.0ft (RKB - 13')
<b>Site Error:</b>	0.0ft	<b>North Reference:</b>	True
<b>Reference Well:</b>	SRC Wiedeman 22-5-4CHZ	<b>Survey Calculation Method:</b>	Minimum Curvature
<b>Well Error:</b>	0.0ft	<b>Output errors are at</b>	2.00 sigma
<b>Reference Wellbore</b>	Wellbore #1	<b>Database:</b>	Landmark
<b>Reference Design:</b>	Plan #1 (6-24-14)	<b>Offset TVD Reference:</b>	Offset Datum

Offset Design												Offset Site Error:	0.0ft
Survey Program: 0-MWD												Offset Well Error:	0.0ft
Reference		Offset		Semi Major Axis			Distance						Warning
Measured Depth (ft)	Vertical Depth (ft)	Measured Depth (ft)	Vertical Depth (ft)	Reference (ft)	Offset (ft)	Highside Toolface (°)	Offset Wellbore Centre +N/-S (ft)	+E/-W (ft)	Between Centres (ft)	Between Ellipses (ft)	Minimum Separation (ft)	Separation Factor	
5,200.0	5,137.1	5,151.3	5,137.1	17.9	12.2	165.72	-185.4	-184.3	512.8	488.7	24.05	21.319	
5,300.0	5,235.5	5,249.7	5,235.5	18.3	12.4	166.18	-185.4	-184.3	529.8	505.3	24.47	21.649	
5,400.0	5,334.0	5,348.2	5,334.0	18.7	12.6	166.62	-185.4	-184.3	546.8	521.9	24.89	21.966	
5,500.0	5,432.4	5,446.6	5,432.4	19.1	12.7	167.03	-185.4	-184.3	563.9	538.6	25.32	22.272	
5,600.0	5,530.9	5,545.1	5,530.9	19.5	12.9	167.42	-185.4	-184.3	581.0	555.3	25.75	22.566	
5,700.0	5,629.3	5,643.5	5,629.3	19.9	13.1	167.79	-185.4	-184.3	598.2	572.0	26.18	22.849	
5,800.0	5,727.8	5,742.0	5,727.8	20.3	13.3	168.13	-185.4	-184.3	615.3	588.7	26.61	23.122	
5,871.1	5,797.8	5,812.0	5,797.8	20.6	13.4	168.37	-185.4	-184.3	627.5	600.6	26.92	23.311	
5,900.0	5,826.3	5,840.4	5,826.3	20.7	13.5	168.48	-185.4	-184.3	632.4	605.3	27.05	23.375	
6,000.0	5,925.2	5,939.3	5,925.2	21.0	13.7	168.79	-185.4	-184.3	646.9	619.4	27.47	23.547	
6,100.0	6,024.5	6,038.7	6,024.5	21.2	13.8	169.03	-185.4	-184.3	658.0	630.2	27.87	23.615	
6,200.0	6,124.2	6,138.4	6,124.2	21.4	14.0	169.19	-185.4	-184.3	665.8	637.5	28.23	23.584	
6,300.0	6,224.1	6,238.3	6,224.1	21.5	14.2	169.27	-185.4	-184.3	670.1	641.5	28.56	23.460	
6,375.9	6,300.0	6,314.2	6,300.0	21.6	14.4	5.64	-185.4	-184.3	671.1	635.5	35.54	18.885	
6,400.0	6,324.1	6,338.3	6,324.1	21.7	14.4	5.64	-185.4	-184.3	671.1	635.5	35.61	18.843	
6,500.0	6,424.1	6,429.6	6,415.2	21.8	14.6	6.01	-185.3	-180.0	671.6	635.7	35.91	18.702	
6,583.7	6,507.8	6,503.2	6,487.9	21.9	14.7	7.01	-185.1	-168.2	673.4	637.2	36.18	18.613	
6,600.0	6,524.1	6,517.3	6,501.6	21.9	14.7	-81.83	-185.1	-165.1	673.9	644.5	29.41	22.915	
6,650.0	6,574.0	6,560.1	6,542.9	21.9	14.7	-80.98	-184.9	-154.0	675.4	645.9	29.47	22.921	
6,700.0	6,623.6	6,600.0	6,580.8	22.0	14.8	-80.21	-184.7	-141.4	677.0	647.5	29.51	22.938	
6,750.0	6,672.6	6,644.5	6,622.1	22.0	14.8	-79.40	-184.5	-125.0	678.7	649.1	29.56	22.960	
6,800.0	6,720.8	6,686.1	6,659.8	22.0	14.8	-78.68	-184.2	-107.3	680.3	650.7	29.60	22.982	
6,850.0	6,768.0	6,727.4	6,696.2	22.0	14.9	-78.01	-183.9	-87.6	681.9	652.3	29.65	23.001	
6,900.0	6,813.9	6,768.5	6,731.0	22.1	14.9	-77.40	-183.6	-66.0	683.5	653.8	29.71	23.008	
6,950.0	6,858.3	6,809.2	6,764.4	22.1	14.9	-76.83	-183.2	-42.6	685.0	655.2	29.78	22.999	
7,000.0	6,901.0	6,850.0	6,796.4	22.0	15.0	-76.32	-182.9	-17.4	686.4	656.5	29.89	22.965	
7,050.0	6,941.8	6,890.1	6,826.5	22.0	15.0	-75.86	-182.5	9.2	687.7	657.7	30.05	22.890	
7,100.0	6,980.5	6,930.3	6,855.0	22.0	15.0	-75.46	-182.0	37.5	688.9	658.7	30.26	22.770	
7,150.0	7,016.9	6,970.3	6,881.8	22.0	15.2	-75.12	-181.6	67.2	689.9	659.4	30.53	22.595	
7,200.0	7,050.8	7,010.2	6,906.8	22.0	15.4	-74.84	-181.1	98.3	690.8	659.9	30.89	22.360	
7,250.0	7,082.0	7,050.0	6,930.0	22.0	15.7	-74.62	-180.6	130.6	691.5	660.2	31.35	22.061	
7,300.0	7,110.5	7,089.8	6,951.4	22.1	16.0	-74.46	-180.1	164.1	692.0	660.1	31.92	21.678	
7,350.0	7,136.0	7,129.4	6,970.8	22.1	16.5	-74.36	-179.6	198.7	692.3	659.7	32.62	21.227	
7,400.0	7,158.5	7,169.1	6,988.3	22.2	16.9	-74.32	-179.1	234.3	692.5	659.0	33.44	20.710	
7,450.0	7,177.8	7,208.7	7,003.7	22.2	17.4	-74.34	-178.5	270.8	692.4	658.0	34.38	20.137	
7,500.0	7,193.8	7,250.0	7,017.6	22.4	18.0	-74.42	-177.9	309.6	692.1	656.6	35.49	19.505	
7,550.0	7,206.5	7,288.1	7,028.5	22.6	18.6	-74.56	-177.4	346.1	691.7	655.0	36.68	18.856	
7,600.0	7,215.8	7,327.9	7,037.7	23.0	19.3	-74.76	-176.8	384.8	691.0	653.0	38.02	18.176	
7,650.0	7,221.6	7,367.7	7,044.8	23.5	20.0	-75.02	-176.2	424.0	690.2	650.7	39.47	17.488	
7,700.0	7,223.9	7,407.7	7,049.7	24.1	20.7	-75.34	-175.6	463.7	689.2	648.2	41.01	16.805	
7,708.7	7,224.0	7,414.7	7,050.4	24.2	20.8	-75.40	-175.5	470.6	689.0	647.7	41.30	16.685	
7,800.0	7,224.0	7,491.2	7,053.0	25.6	22.3	-75.61	-174.3	547.0	688.2	643.7	44.50	15.467	
7,900.0	7,224.0	7,591.2	7,053.0	27.5	24.4	-75.61	-172.8	647.0	688.2	639.7	48.55	14.174	
8,000.0	7,224.0	7,691.2	7,053.0	29.6	26.7	-75.61	-171.3	747.0	688.2	635.3	52.86	13.020	
8,100.0	7,224.0	7,791.2	7,053.0	31.8	29.0	-75.61	-169.8	847.0	688.2	630.8	57.36	11.998	
8,200.0	7,224.0	7,891.2	7,053.0	34.1	31.4	-75.61	-168.3	947.0	688.2	626.2	62.01	11.098	
8,300.0	7,224.0	7,991.2	7,053.0	36.5	33.9	-75.61	-166.8	1,046.9	688.2	621.4	66.78	10.304	
8,400.0	7,224.0	8,091.2	7,053.0	38.9	36.4	-75.61	-165.3	1,146.9	688.1	616.5	71.65	9.604	
8,500.0	7,224.0	8,191.2	7,053.0	41.4	38.9	-75.61	-163.8	1,246.9	688.1	611.5	76.60	8.983	
8,600.0	7,224.0	8,291.2	7,053.0	43.9	41.5	-75.61	-162.2	1,346.9	688.1	606.5	81.61	8.431	
8,700.0	7,224.0	8,391.2	7,053.0	46.5	44.1	-75.61	-160.7	1,446.9	688.1	601.4	86.68	7.939	
8,800.0	7,224.0	8,491.2	7,053.0	49.1	46.8	-75.61	-159.2	1,546.9	688.1	596.3	91.79	7.497	

CC - Min centre to center distance or convergent point, SF - min separation factor, ES - min ellipse separation

<b>Company:</b>	Synergy Resources	<b>Local Co-ordinate Reference:</b>	Well SRC Wiedeman 22-5-4CHZ
<b>Project:</b>	Sec.5-T5N-R66W	<b>TVD Reference:</b>	WELL @ 4796.0ft (RKB - 13')
<b>Reference Site:</b>	SRC Wiedeman Pad Sec.5-T5N-R66W	<b>MD Reference:</b>	WELL @ 4796.0ft (RKB - 13')
<b>Site Error:</b>	0.0ft	<b>North Reference:</b>	True
<b>Reference Well:</b>	SRC Wiedeman 22-5-4CHZ	<b>Survey Calculation Method:</b>	Minimum Curvature
<b>Well Error:</b>	0.0ft	<b>Output errors are at</b>	2.00 sigma
<b>Reference Wellbore</b>	Wellbore #1	<b>Database:</b>	Landmark
<b>Reference Design:</b>	Plan #1 (6-24-14)	<b>Offset TVD Reference:</b>	Offset Datum

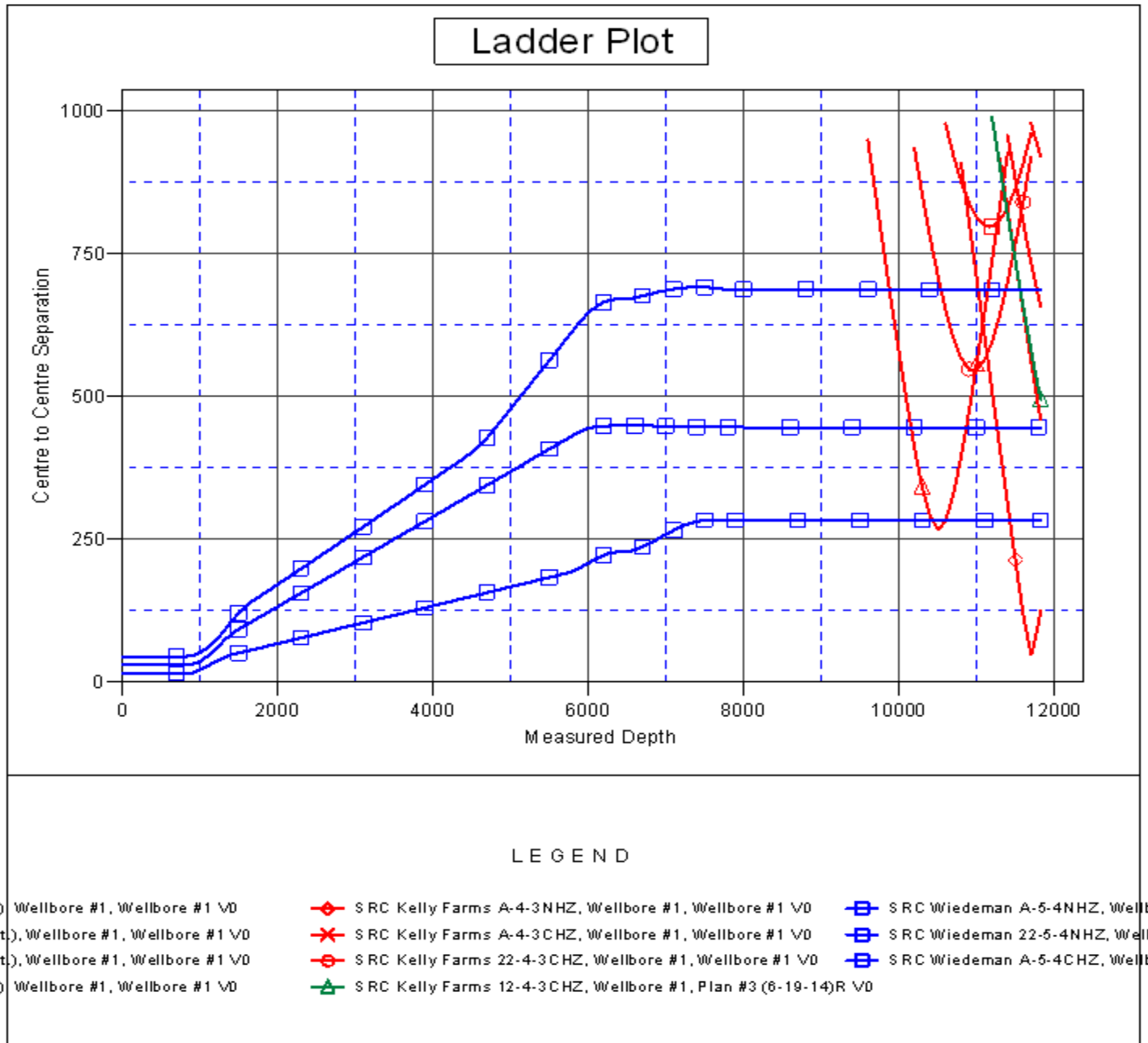
Offset Design SRC Wiedeman Pad Sec.5-T5N-R66W - SRC Wiedeman A-5-4NHZ - Wellbore #1 - Plan #1 (6-24-14)												Offset Site Error:	0.0 ft
Survey Program: 0-MWD												Offset Well Error:	0.0 ft
Reference		Offset		Semi Major Axis			Distance						Warning
Measured Depth (ft)	Vertical Depth (ft)	Measured Depth (ft)	Vertical Depth (ft)	Reference (ft)	Offset (ft)	Highside Toolface (°)	Offset Wellbore Centre +N/-S (ft)	+E/-W (ft)	Between Centres (ft)	Between Ellipses (ft)	Minimum Separation (ft)	Separation Factor	
8,900.0	7,224.0	8,591.2	7,053.0	51.7	49.4	-75.61	-157.7	1,646.9	688.1	591.2	96.93	7.099	
9,000.0	7,224.0	8,691.2	7,053.0	54.3	52.1	-75.61	-156.2	1,746.9	688.1	586.0	102.11	6.739	
9,100.0	7,224.0	8,791.2	7,053.0	56.9	54.8	-75.61	-154.7	1,846.9	688.1	580.7	107.31	6.412	
9,200.0	7,224.0	8,891.2	7,053.0	59.6	57.5	-75.61	-153.2	1,946.8	688.1	575.5	112.54	6.114	
9,300.0	7,224.0	8,991.2	7,053.0	62.3	60.2	-75.61	-151.7	2,046.8	688.0	570.2	117.79	5.841	
9,400.0	7,224.0	9,091.2	7,053.0	65.0	62.9	-75.61	-150.1	2,146.8	688.0	565.0	123.05	5.591	
9,500.0	7,224.0	9,191.2	7,053.0	67.6	65.6	-75.61	-148.6	2,246.8	688.0	559.7	128.33	5.361	
9,600.0	7,224.0	9,291.2	7,053.0	70.3	68.3	-75.61	-147.1	2,346.8	688.0	554.4	133.63	5.149	
9,700.0	7,224.0	9,391.2	7,053.0	73.1	71.1	-75.61	-145.6	2,446.8	688.0	549.1	138.93	4.952	
9,800.0	7,224.0	9,491.2	7,053.0	75.8	73.8	-75.61	-144.1	2,546.8	688.0	543.7	144.25	4.769	
9,900.0	7,224.0	9,591.2	7,053.0	78.5	76.5	-75.61	-142.6	2,646.8	688.0	538.4	149.58	4.599	
10,000.0	7,224.0	9,691.2	7,053.0	81.2	79.3	-75.61	-141.1	2,746.7	688.0	533.0	154.91	4.441	
10,100.0	7,224.0	9,791.2	7,053.0	84.0	82.0	-75.61	-139.6	2,846.7	687.9	527.7	160.25	4.293	
10,200.0	7,224.0	9,891.2	7,053.0	86.7	84.8	-75.61	-138.1	2,946.7	687.9	522.3	165.60	4.154	
10,300.0	7,224.0	9,991.2	7,053.0	89.4	87.6	-75.61	-136.5	3,046.7	687.9	517.0	170.96	4.024	
10,400.0	7,224.0	10,091.2	7,053.0	92.2	90.3	-75.61	-135.0	3,146.7	687.9	511.6	176.32	3.901	
10,500.0	7,224.0	10,191.2	7,053.0	94.9	93.1	-75.61	-133.5	3,246.7	687.9	506.2	181.69	3.786	
10,600.0	7,224.0	10,291.2	7,053.0	97.7	95.8	-75.61	-132.0	3,346.7	687.9	500.8	187.06	3.677	
10,700.0	7,224.0	10,391.2	7,053.0	100.4	98.6	-75.61	-130.5	3,446.7	687.9	495.4	192.43	3.575	
10,800.0	7,224.0	10,491.2	7,053.0	103.2	101.4	-75.61	-129.0	3,546.7	687.9	490.0	197.81	3.477	
10,900.0	7,224.0	10,591.2	7,053.0	105.9	104.2	-75.61	-127.5	3,646.6	687.8	484.6	203.20	3.385	
11,000.0	7,224.0	10,691.2	7,053.0	108.7	106.9	-75.60	-126.0	3,746.6	687.8	479.3	208.58	3.298	
11,100.0	7,224.0	10,791.2	7,053.0	111.5	109.7	-75.60	-124.4	3,846.6	687.8	473.8	213.97	3.215	
11,200.0	7,224.0	10,891.2	7,053.0	114.2	112.5	-75.60	-122.9	3,946.6	687.8	468.4	219.37	3.135	
11,300.0	7,224.0	10,991.2	7,053.0	117.0	115.3	-75.60	-121.4	4,046.6	687.8	463.0	224.76	3.060	
11,400.0	7,224.0	11,091.2	7,053.0	119.8	118.0	-75.60	-119.9	4,146.6	687.8	457.6	230.16	2.988	
11,500.0	7,224.0	11,191.2	7,053.0	122.5	120.8	-75.60	-118.4	4,246.6	687.8	452.2	235.56	2.920	
11,600.0	7,224.0	11,291.2	7,053.0	125.3	123.6	-75.60	-116.9	4,346.6	687.8	446.8	240.96	2.854	
11,700.0	7,224.0	11,391.2	7,053.0	128.1	126.4	-75.60	-115.4	4,446.6	687.7	441.4	246.37	2.792	
11,800.0	7,224.0	11,491.2	7,053.0	130.9	129.2	-75.60	-113.9	4,546.5	687.7	436.0	251.77	2.732	
11,824.1	7,224.0	11,515.3	7,053.0	131.5	129.8	-75.60	-113.5	4,570.6	687.7	434.7	253.08	2.718 SF	

**Company:** Synergy Resources  
**Project:** Sec.5-T5N-R66W  
**Reference Site:** SRC Wiedeman Pad Sec.5-T5N-R66W  
**Site Error:** 0.0ft  
**Reference Well:** SRC Wiedeman 22-5-4CHZ  
**Well Error:** 0.0ft  
**Reference Wellbore:** Wellbore #1  
**Reference Design:** Plan #1 (6-24-14)

**Local Co-ordinate Reference:** Well SRC Wiedeman 22-5-4CHZ  
**TVD Reference:** WELL @ 4796.0ft (RKB - 13')  
**MD Reference:** WELL @ 4796.0ft (RKB - 13')  
**North Reference:** True  
**Survey Calculation Method:** Minimum Curvature  
**Output errors are at** 2.00 sigma  
**Database:** Landmark  
**Offset TVD Reference:** Offset Datum

Reference Depths are relative to WELL @ 4796.0ft (RKB - 13')  
Offset Depths are relative to Offset Datum  
Central Meridian is -105.500000 °

Coordinates are relative to: SRC Wiedeman 22-5-4CHZ  
Coordinate System is US State Plane 1983, Colorado Northern Zone  
Grid Convergence at Surface is: 0.45°



**Company:** Synergy Resources  
**Project:** Sec.5-T5N-R66W  
**Reference Site:** SRC Wiedeman Pad Sec.5-T5N-R66W  
**Site Error:** 0.0ft  
**Reference Well:** SRC Wiedeman 22-5-4CHZ  
**Well Error:** 0.0ft  
**Reference Wellbore:** Wellbore #1  
**Reference Design:** Plan #1 (6-24-14)

**Local Co-ordinate Reference:** Well SRC Wiedeman 22-5-4CHZ  
**TVD Reference:** WELL @ 4796.0ft (RKB - 13')  
**MD Reference:** WELL @ 4796.0ft (RKB - 13')  
**North Reference:** True  
**Survey Calculation Method:** Minimum Curvature  
**Output errors are at** 2.00 sigma  
**Database:** Landmark  
**Offset TVD Reference:** Offset Datum

Reference Depths are relative to WELL @ 4796.0ft (RKB - 13')

Offset Depths are relative to Offset Datum

Central Meridian is -105.500000 °

Coordinates are relative to: SRC Wiedeman 22-5-4CHZ

Coordinate System is US State Plane 1983, Colorado Northern Zone

Grid Convergence at Surface is: 0.45°

