

Synergy Resources

Well Name: **SRC Wiedeman 22-5-4NHZ**

Surface Location: SRC Wiedeman Pad Sec.5-T5N-R66W
North American Datum 1983 , US State Plane 1983 , Colorado Northern Zone

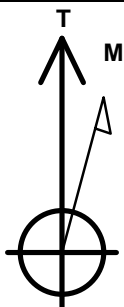
Ground Elevation: 4783.0

+N/-S	+E/-W	Northing	Easting	Latitude	Longitude	Slot
0.0	0.0	1401402.54	3194376.65	40.433151	-104.801736	

RKB - 13' WELL @ 4796.0ft (RKB - 13')

WELLBORE TARGET DETAILS

Name	TVD	+N/-S	+E/-W	Shape
SHL 1467'FNL & 24838'FEL, Sec.5		0.0	0.0	Point
BHL 2104'FNL & 2195'FWL, Sec.4	7053.0	-567.9	4598.5	Point



Azimuths to True North
Magnetic North: 8.48°

Magnetic Field
Strength: 52825.9snT
Dip Angle: 66.97°
Date: 6/26/2014
Model: IGRF2010

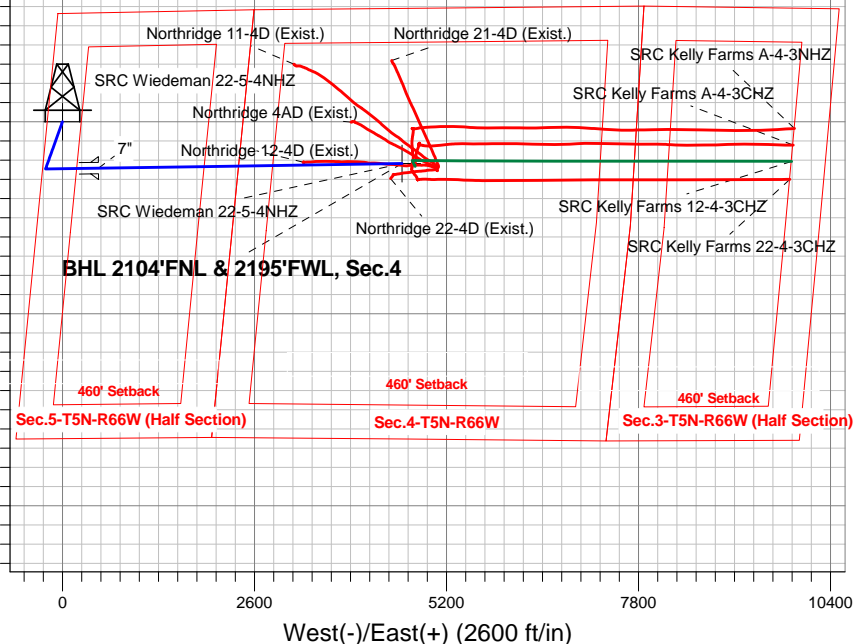
SRC Wiedeman Pad Sec.5-T5N-R66W
SRC Wiedeman 22-5-4NHZ
Plan #1 (6-24-14)
6:32, June 26 2014

ANNOTATIONS

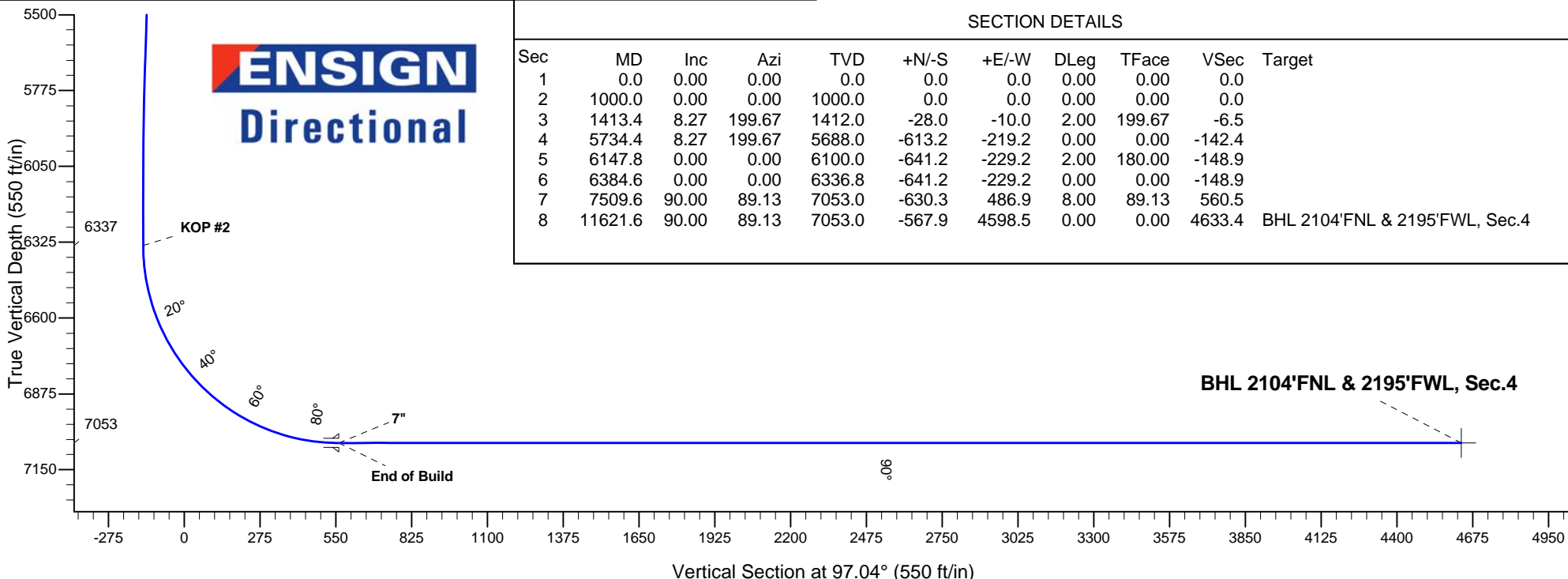
TVD	MD	Annotation
1000.0	1000.0	KOP #1
6336.8	6384.6	KOP #2
7053.0	7509.6	End of Build

South(-)/North(+) (2600 ft/in)

SHL 1467'FNL & 24838'FEL, Sec.5



BHL 2104'FNL & 2195'FWL, Sec.4



ENSIGN
Directional

SECTION DETAILS

Sec	MD	Inc	Azi	TVD	+N/-S	+E/-W	DLeg	TFace	VSec	Target
1	0.0	0.00	0.00	0.0	0.0	0.0	0.00	0.00	0.0	
2	1000.0	0.00	0.00	1000.0	0.0	0.0	0.00	0.00	0.0	
3	1413.4	8.27	199.67	1412.0	-28.0	-10.0	2.00	199.67	-6.5	
4	5734.4	8.27	199.67	5688.0	-613.2	-219.2	0.00	0.00	-142.4	
5	6147.8	0.00	0.00	6100.0	-641.2	-229.2	2.00	180.00	-148.9	
6	6384.6	0.00	0.00	6336.8	-641.2	-229.2	0.00	0.00	-148.9	
7	7509.6	90.00	89.13	7053.0	-630.3	486.9	8.00	89.13	560.5	
8	11621.6	90.00	89.13	7053.0	-567.9	4598.5	0.00	0.00	4633.4	BHL 2104'FNL & 2195'FWL, Sec.4



Synergy Resources

Sec.5-T5N-R66W

SRC Wiedeman Pad Sec.5-T5N-R66W

SRC Wiedeman 22-5-4NHZ

Wellbore #1

Plan: Plan #1 (6-24-14)

Standard Planning Report

26 June, 2014



Database:	Landmark	Local Co-ordinate Reference:	Well SRC Wiedeman 22-5-4NHZ
Company:	Synergy Resources	TVD Reference:	WELL @ 4796.0ft (RKB - 13')
Project:	Sec.5-T5N-R66W	MD Reference:	WELL @ 4796.0ft (RKB - 13')
Site:	SRC Wiedeman Pad Sec.5-T5N-R66W	North Reference:	True
Well:	SRC Wiedeman 22-5-4NHZ	Survey Calculation Method:	Minimum Curvature
Wellbore:	Wellbore #1		
Design:	Plan #1 (6-24-14)		

Project	Sec.5-T5N-R66W		
Map System:	US State Plane 1983	System Datum:	Mean Sea Level
Geo Datum:	North American Datum 1983		Using Well Reference Point
Map Zone:	Colorado Northern Zone		Using geodetic scale factor

Site						SRC Wiedeman Pad Sec.5-T5N-R66W											
Site Position:						Northing:			1,401,391.96 ft			Latitude:			40.433123		
From:			Lat/Long			Easting:			3,194,327.74 ft			Longitude:			-104.801912		
Position Uncertainty:			0.0 ft			Slot Radius:			"			Grid Convergence:			0.45 °		

Well	SRC Wiedeman 22-5-4NHZ					
Well Position	+N-S	10.2 ft	Northing:	1,401,402.54 ft	Latitude:	40.433151
	+E-W	49.0 ft	Easting:	3,194,376.65 ft	Longitude:	-104.801736
Position Uncertainty		0.0 ft	Wellhead Elevation:	ft	Ground Level:	4,783.0 ft

Wellbore	Wellbore #1				
Magnetics	Model Name	Sample Date	Declination (°)	Dip Angle (°)	Field Strength (nT)
	IGRF2010	6/26/2014	8.48	66.97	52,826

Design	Plan #1 (6-24-14)			
Audit Notes:				
Version:	Phase:	PROTOTYPE	Tie On Depth:	0.0
Vertical Section:	Depth From (TVD) (ft)	+N/-S (ft)	+E/-W (ft)	Direction (°)
	0.0	0.0	0.0	97.04

Plan Sections										
Measured Depth (ft)	Inclination (°)	Azimuth (°)	Vertical Depth (ft)	+N/-S (ft)	+E/-W (ft)	Dogleg Rate (°/100ft)	Build Rate (°/100ft)	Turn Rate (°/100ft)	TFO (°)	Target
0.0	0.00	0.00	0.0	0.0	0.0	0.00	0.00	0.00	0.00	
1,000.0	0.00	0.00	1,000.0	0.0	0.0	0.00	0.00	0.00	0.00	
1,413.4	8.27	199.67	1,412.0	-28.0	-10.0	2.00	2.00	0.00	199.67	
5,734.4	8.27	199.67	5,688.0	-613.2	-219.2	0.00	0.00	0.00	0.00	
6,147.8	0.00	0.00	6,100.0	-641.2	-229.2	2.00	-2.00	0.00	180.00	
6,384.6	0.00	0.00	6,336.8	-641.2	-229.2	0.00	0.00	0.00	0.00	
7,509.6	90.00	89.13	7,053.0	-630.3	486.9	8.00	8.00	0.00	89.13	
11,621.6	90.00	89.13	7,053.0	-567.9	4,598.5	0.00	0.00	0.00	0.00	BHL 2104'FNL & 21

Database:	Landmark	Local Co-ordinate Reference:	Well SRC Wiedeman 22-5-4NHZ
Company:	Synergy Resources	TVD Reference:	WELL @ 4796.0ft (RKB - 13')
Project:	Sec.5-T5N-R66W	MD Reference:	WELL @ 4796.0ft (RKB - 13')
Site:	SRC Wiedeman Pad Sec.5-T5N-R66W	North Reference:	True
Well:	SRC Wiedeman 22-5-4NHZ	Survey Calculation Method:	Minimum Curvature
Wellbore:	Wellbore #1		
Design:	Plan #1 (6-24-14)		

Planned Survey									
Measured Depth (ft)	Inclination (°)	Azimuth (°)	Vertical Depth (ft)	+N/-S (ft)	+E/-W (ft)	Vertical Section (ft)	Dogleg Rate (°/100ft)	Build Rate (°/100ft)	Turn Rate (°/100ft)
0.0	0.00	0.00	0.0	0.0	0.0	0.0	0.00	0.00	0.00
1.0	0.00	0.00	1.0	0.0	0.0	0.0	0.00	0.00	0.00
SHL 1467'FNL & 24838'FEL, Sec.5									
100.0	0.00	0.00	100.0	0.0	0.0	0.0	0.00	0.00	0.00
200.0	0.00	0.00	200.0	0.0	0.0	0.0	0.00	0.00	0.00
300.0	0.00	0.00	300.0	0.0	0.0	0.0	0.00	0.00	0.00
400.0	0.00	0.00	400.0	0.0	0.0	0.0	0.00	0.00	0.00
500.0	0.00	0.00	500.0	0.0	0.0	0.0	0.00	0.00	0.00
600.0	0.00	0.00	600.0	0.0	0.0	0.0	0.00	0.00	0.00
700.0	0.00	0.00	700.0	0.0	0.0	0.0	0.00	0.00	0.00
800.0	0.00	0.00	800.0	0.0	0.0	0.0	0.00	0.00	0.00
900.0	0.00	0.00	900.0	0.0	0.0	0.0	0.00	0.00	0.00
1,000.0	0.00	0.00	1,000.0	0.0	0.0	0.0	0.00	0.00	0.00
KOP #1									
1,100.0	2.00	199.67	1,100.0	-1.6	-0.6	-0.4	2.00	2.00	0.00
1,200.0	4.00	199.67	1,199.8	-6.6	-2.3	-1.5	2.00	2.00	0.00
1,300.0	6.00	199.67	1,299.5	-14.8	-5.3	-3.4	2.00	2.00	0.00
1,400.0	8.00	199.67	1,398.7	-26.3	-9.4	-6.1	2.00	2.00	0.00
1,413.4	8.27	199.67	1,412.0	-28.0	-10.0	-6.5	2.00	2.00	0.00
1,500.0	8.27	199.67	1,497.7	-39.8	-14.2	-9.2	0.00	0.00	0.00
1,600.0	8.27	199.67	1,596.6	-53.3	-19.1	-12.4	0.00	0.00	0.00
1,700.0	8.27	199.67	1,695.6	-66.8	-23.9	-15.5	0.00	0.00	0.00
1,800.0	8.27	199.67	1,794.5	-80.4	-28.7	-18.7	0.00	0.00	0.00
1,900.0	8.27	199.67	1,893.5	-93.9	-33.6	-21.8	0.00	0.00	0.00
2,000.0	8.27	199.67	1,992.5	-107.5	-38.4	-25.0	0.00	0.00	0.00
2,100.0	8.27	199.67	2,091.4	-121.0	-43.3	-28.1	0.00	0.00	0.00
2,200.0	8.27	199.67	2,190.4	-134.6	-48.1	-31.2	0.00	0.00	0.00
2,300.0	8.27	199.67	2,289.4	-148.1	-52.9	-34.4	0.00	0.00	0.00
2,400.0	8.27	199.67	2,388.3	-161.6	-57.8	-37.5	0.00	0.00	0.00
2,500.0	8.27	199.67	2,487.3	-175.2	-62.6	-40.7	0.00	0.00	0.00
2,600.0	8.27	199.67	2,586.2	-188.7	-67.5	-43.8	0.00	0.00	0.00
2,700.0	8.27	199.67	2,685.2	-202.3	-72.3	-47.0	0.00	0.00	0.00
2,800.0	8.27	199.67	2,784.2	-215.8	-77.1	-50.1	0.00	0.00	0.00
2,900.0	8.27	199.67	2,883.1	-229.3	-82.0	-53.3	0.00	0.00	0.00
3,000.0	8.27	199.67	2,982.1	-242.9	-86.8	-56.4	0.00	0.00	0.00
3,100.0	8.27	199.67	3,081.0	-256.4	-91.7	-59.5	0.00	0.00	0.00
3,200.0	8.27	199.67	3,180.0	-270.0	-96.5	-62.7	0.00	0.00	0.00
3,300.0	8.27	199.67	3,279.0	-283.5	-101.3	-65.8	0.00	0.00	0.00
3,400.0	8.27	199.67	3,377.9	-297.0	-106.2	-69.0	0.00	0.00	0.00
3,500.0	8.27	199.67	3,476.9	-310.6	-111.0	-72.1	0.00	0.00	0.00
3,600.0	8.27	199.67	3,575.8	-324.1	-115.9	-75.3	0.00	0.00	0.00
3,700.0	8.27	199.67	3,674.8	-337.7	-120.7	-78.4	0.00	0.00	0.00
3,800.0	8.27	199.67	3,773.8	-351.2	-125.5	-81.5	0.00	0.00	0.00
3,900.0	8.27	199.67	3,872.7	-364.8	-130.4	-84.7	0.00	0.00	0.00
4,000.0	8.27	199.67	3,971.7	-378.3	-135.2	-87.8	0.00	0.00	0.00
4,100.0	8.27	199.67	4,070.6	-391.8	-140.1	-91.0	0.00	0.00	0.00
4,200.0	8.27	199.67	4,169.6	-405.4	-144.9	-94.1	0.00	0.00	0.00
4,300.0	8.27	199.67	4,268.6	-418.9	-149.7	-97.3	0.00	0.00	0.00
4,400.0	8.27	199.67	4,367.5	-432.5	-154.6	-100.4	0.00	0.00	0.00
4,500.0	8.27	199.67	4,466.5	-446.0	-159.4	-103.6	0.00	0.00	0.00
4,600.0	8.27	199.67	4,565.4	-459.5	-164.3	-106.7	0.00	0.00	0.00
4,700.0	8.27	199.67	4,664.4	-473.1	-169.1	-109.8	0.00	0.00	0.00
4,800.0	8.27	199.67	4,763.4	-486.6	-173.9	-113.0	0.00	0.00	0.00
4,900.0	8.27	199.67	4,862.3	-500.2	-178.8	-116.1	0.00	0.00	0.00

Database:	Landmark	Local Co-ordinate Reference:	Well SRC Wiedeman 22-5-4NHZ
Company:	Synergy Resources	TVD Reference:	WELL @ 4796.0ft (RKB - 13')
Project:	Sec.5-T5N-R66W	MD Reference:	WELL @ 4796.0ft (RKB - 13')
Site:	SRC Wiedeman Pad Sec.5-T5N-R66W	North Reference:	True
Well:	SRC Wiedeman 22-5-4NHZ	Survey Calculation Method:	Minimum Curvature
Wellbore:	Wellbore #1		
Design:	Plan #1 (6-24-14)		

Planned Survey									
Measured Depth (ft)	Inclination (°)	Azimuth (°)	Vertical Depth (ft)	+N/-S (ft)	+E/-W (ft)	Vertical Section (ft)	Dogleg Rate (°/100ft)	Build Rate (°/100ft)	Turn Rate (°/100ft)
5,000.0	8.27	199.67	4,961.3	-513.7	-183.6	-119.3	0.00	0.00	0.00
5,100.0	8.27	199.67	5,060.2	-527.3	-188.5	-122.4	0.00	0.00	0.00
5,200.0	8.27	199.67	5,159.2	-540.8	-193.3	-125.6	0.00	0.00	0.00
5,300.0	8.27	199.67	5,258.2	-554.3	-198.1	-128.7	0.00	0.00	0.00
5,400.0	8.27	199.67	5,357.1	-567.9	-203.0	-131.9	0.00	0.00	0.00
5,500.0	8.27	199.67	5,456.1	-581.4	-207.8	-135.0	0.00	0.00	0.00
5,600.0	8.27	199.67	5,555.1	-595.0	-212.7	-138.1	0.00	0.00	0.00
5,700.0	8.27	199.67	5,654.0	-608.5	-217.5	-141.3	0.00	0.00	0.00
5,734.4	8.27	199.67	5,688.0	-613.2	-219.2	-142.4	0.00	0.00	0.00
5,800.0	6.96	199.67	5,753.1	-621.3	-222.1	-144.3	2.00	-2.00	0.00
5,900.0	4.96	199.67	5,852.5	-631.1	-225.6	-146.5	2.00	-2.00	0.00
6,000.0	2.96	199.67	5,952.3	-637.6	-227.9	-148.0	2.00	-2.00	0.00
6,100.0	0.96	199.67	6,052.2	-640.8	-229.1	-148.8	2.00	-2.00	0.00
6,147.8	0.00	0.00	6,100.0	-641.2	-229.2	-148.9	2.00	-2.00	0.00
6,200.0	0.00	0.00	6,152.2	-641.2	-229.2	-148.9	0.00	0.00	0.00
6,300.0	0.00	0.00	6,252.2	-641.2	-229.2	-148.9	0.00	0.00	0.00
6,384.6	0.00	0.00	6,336.8	-641.2	-229.2	-148.9	0.00	0.00	0.00
KOP #2									
6,400.0	1.23	89.13	6,352.2	-641.2	-229.0	-148.7	8.01	8.01	0.00
6,500.0	9.23	89.13	6,451.7	-641.1	-219.9	-139.7	8.00	8.00	0.00
6,600.0	17.23	89.13	6,549.0	-640.7	-197.0	-117.0	8.00	8.00	0.00
6,700.0	25.23	89.13	6,642.1	-640.2	-160.9	-81.2	8.00	8.00	0.00
6,800.0	33.23	89.13	6,729.3	-639.4	-112.1	-32.9	8.00	8.00	0.00
6,900.0	41.23	89.13	6,808.9	-638.5	-51.6	27.0	8.00	8.00	0.00
7,000.0	49.23	89.13	6,879.2	-637.4	19.3	97.3	8.00	8.00	0.00
7,100.0	57.23	89.13	6,939.0	-636.2	99.3	176.6	8.00	8.00	0.00
7,200.0	65.23	89.13	6,987.1	-634.9	186.9	263.3	8.00	8.00	0.00
7,300.0	73.23	89.13	7,022.6	-633.5	280.3	355.9	8.00	8.00	0.00
7,400.0	81.23	89.13	7,044.6	-632.0	377.8	452.4	8.00	8.00	0.00
7,500.0	89.23	89.13	7,052.9	-630.5	477.3	551.0	8.00	8.00	0.00
7,509.6	90.00	89.13	7,053.0	-630.3	486.9	560.5	7.98	7.98	0.00
End of Build - 7"									
7,600.0	90.00	89.13	7,053.0	-628.9	577.3	650.1	0.00	0.00	0.00
7,700.0	90.00	89.13	7,053.0	-627.4	677.3	749.1	0.00	0.00	0.00
7,800.0	90.00	89.13	7,053.0	-625.9	777.3	848.2	0.00	0.00	0.00
7,900.0	90.00	89.13	7,053.0	-624.4	877.3	947.2	0.00	0.00	0.00
8,000.0	90.00	89.13	7,053.0	-622.9	977.3	1,046.3	0.00	0.00	0.00
8,100.0	90.00	89.13	7,053.0	-621.4	1,077.3	1,145.3	0.00	0.00	0.00
8,200.0	90.00	89.13	7,053.0	-619.8	1,177.3	1,244.4	0.00	0.00	0.00
8,300.0	90.00	89.13	7,053.0	-618.3	1,277.2	1,343.4	0.00	0.00	0.00
8,400.0	90.00	89.13	7,053.0	-616.8	1,377.2	1,442.5	0.00	0.00	0.00
8,500.0	90.00	89.13	7,053.0	-615.3	1,477.2	1,541.5	0.00	0.00	0.00
8,600.0	90.00	89.13	7,053.0	-613.8	1,577.2	1,640.5	0.00	0.00	0.00
8,700.0	90.00	89.13	7,053.0	-612.2	1,677.2	1,739.6	0.00	0.00	0.00
8,800.0	90.00	89.13	7,053.0	-610.7	1,777.2	1,838.6	0.00	0.00	0.00
8,900.0	90.00	89.13	7,053.0	-609.2	1,877.2	1,937.7	0.00	0.00	0.00
9,000.0	90.00	89.13	7,053.0	-607.7	1,977.2	2,036.7	0.00	0.00	0.00
9,100.0	90.00	89.13	7,053.0	-606.2	2,077.2	2,135.8	0.00	0.00	0.00
9,200.0	90.00	89.13	7,053.0	-604.7	2,177.1	2,234.8	0.00	0.00	0.00
9,300.0	90.00	89.13	7,053.0	-603.1	2,277.1	2,333.9	0.00	0.00	0.00
9,400.0	90.00	89.13	7,053.0	-601.6	2,377.1	2,432.9	0.00	0.00	0.00
9,500.0	90.00	89.13	7,053.0	-600.1	2,477.1	2,532.0	0.00	0.00	0.00
9,600.0	90.00	89.13	7,053.0	-598.6	2,577.1	2,631.0	0.00	0.00	0.00
9,700.0	90.00	89.13	7,053.0	-597.1	2,677.1	2,730.1	0.00	0.00	0.00

Database: Landmark
Company: Synergy Resources
Project: Sec.5-T5N-R66W
Site: SRC Wiedeman Pad Sec.5-T5N-R66W
Well: SRC Wiedeman 22-5-4NHZ
Wellbore: Wellbore #1
Design: Plan #1 (6-24-14)

Local Co-ordinate Reference: Well SRC Wiedeman 22-5-4NHZ
TVD Reference: WELL @ 4796.0ft (RKB - 13')
MD Reference: WELL @ 4796.0ft (RKB - 13')
North Reference: True
Survey Calculation Method: Minimum Curvature

Planned Survey

Measured Depth (ft)	Inclination (°)	Azimuth (°)	Vertical Depth (ft)	+N/-S (ft)	+E/-W (ft)	Vertical Section (ft)	Dogleg Rate (°/100ft)	Build Rate (°/100ft)	Turn Rate (°/100ft)
9,800.0	90.00	89.13	7,053.0	-595.5	2,777.1	2,829.1	0.00	0.00	0.00
9,900.0	90.00	89.13	7,053.0	-594.0	2,877.1	2,928.2	0.00	0.00	0.00
10,000.0	90.00	89.13	7,053.0	-592.5	2,977.1	3,027.2	0.00	0.00	0.00
10,100.0	90.00	89.13	7,053.0	-591.0	3,077.0	3,126.3	0.00	0.00	0.00
10,200.0	90.00	89.13	7,053.0	-589.5	3,177.0	3,225.3	0.00	0.00	0.00
10,300.0	90.00	89.13	7,053.0	-588.0	3,277.0	3,324.4	0.00	0.00	0.00
10,400.0	90.00	89.13	7,053.0	-586.4	3,377.0	3,423.4	0.00	0.00	0.00
10,500.0	90.00	89.13	7,053.0	-584.9	3,477.0	3,522.5	0.00	0.00	0.00
10,600.0	90.00	89.13	7,053.0	-583.4	3,577.0	3,621.5	0.00	0.00	0.00
10,700.0	90.00	89.13	7,053.0	-581.9	3,677.0	3,720.6	0.00	0.00	0.00
10,800.0	90.00	89.13	7,053.0	-580.4	3,777.0	3,819.6	0.00	0.00	0.00
10,900.0	90.00	89.13	7,053.0	-578.8	3,876.9	3,918.7	0.00	0.00	0.00
11,000.0	90.00	89.13	7,053.0	-577.3	3,976.9	4,017.7	0.00	0.00	0.00
11,100.0	90.00	89.13	7,053.0	-575.8	4,076.9	4,116.8	0.00	0.00	0.00
11,200.0	90.00	89.13	7,053.0	-574.3	4,176.9	4,215.8	0.00	0.00	0.00
11,300.0	90.00	89.13	7,053.0	-572.8	4,276.9	4,314.9	0.00	0.00	0.00
11,400.0	90.00	89.13	7,053.0	-571.3	4,376.9	4,413.9	0.00	0.00	0.00
11,500.0	90.00	89.13	7,053.0	-569.7	4,476.9	4,513.0	0.00	0.00	0.00
11,600.0	90.00	89.13	7,053.0	-568.2	4,576.9	4,612.0	0.00	0.00	0.00
11,621.6	90.00	89.13	7,053.0	-567.9	4,598.5	4,633.4	0.00	0.00	0.00

BHL 2104'FNL & 2195'FWL, Sec.4
Targets
Target Name

- hit/miss target - Shape	Dip Angle (°)	Dip Dir. (°)	TVD (ft)	+N/-S (ft)	+E/-W (ft)	Northing (ft)	Easting (ft)	Latitude	Longitude
BHL 2104'FNL & 2195'FWL - plan hits target center - Point	0.00	0.00	7,053.0	-567.9	4,598.5	1,400,870.90	3,198,979.27	40.431591	-104.785218
SHL 1467'FNL & 2483'FWL - plan hits target center - Point	0.00	0.00	1.0	0.0	0.0	1,401,402.55	3,194,376.65	40.433151	-104.801736

Casing Points

Measured Depth (ft)	Vertical Depth (ft)	Name	Casing Diameter (")	Hole Diameter (")
7,509.6	7,053.0	7"	7	7-1/2

Plan Annotations

Measured Depth (ft)	Vertical Depth (ft)	Local Coordinates +N/-S (ft)	+E/-W (ft)	Comment
1,000.0	1,000.0	0.0	0.0	KOP #1
6,384.6	6,336.8	-641.2	-229.2	KOP #2
7,509.6	7,053.0	-630.3	486.9	End of Build

Synergy Resources

Sec.5-T5N-R66W

SRC Wiedeman Pad Sec.5-T5N-R66W

SRC Wiedeman 22-5-4NHZ

Wellbore #1

Plan #1 (6-24-14)

Anticollision Report

26 June, 2014

Company:	Synergy Resources	Local Co-ordinate Reference:	Well SRC Wiedeman 22-5-4NHZ
Project:	Sec.5-T5N-R66W	TVD Reference:	WELL @ 4796.0ft (RKB - 13')
Reference Site:	SRC Wiedeman Pad Sec.5-T5N-R66W	MD Reference:	WELL @ 4796.0ft (RKB - 13')
Site Error:	0.0ft	North Reference:	True
Reference Well:	SRC Wiedeman 22-5-4NHZ	Survey Calculation Method:	Minimum Curvature
Well Error:	0.0ft	Output errors are at	2.00 sigma
Reference Wellbore	Wellbore #1	Database:	Landmark
Reference Design:	Plan #1 (6-24-14)	Offset TVD Reference:	Offset Datum

Reference	Plan #1 (6-24-14)		
Filter type:	NO GLOBAL FILTER: Using user defined selection & filtering criteria		
Interpolation Method:	Stations	Error Model:	ISCWSA
Depth Range:	Unlimited	Scan Method:	Closest Approach 3D
Results Limited by:	Maximum center-center distance of 1,000.0ft	Error Surface:	Elliptical Conic
Warning Levels Evaluated at:	2.00 Sigma		

Survey Tool Program	Date 6/26/2014			
From (ft)	To (ft)	Survey (Wellbore)	Tool Name	Description
0.0	11,621.6	Plan #1 (6-24-14) (Wellbore #1)	MWD	MWD - Standard

Summary						
Site Name	Reference Measured Depth (ft)	Offset Measured Depth (ft)	Distance Between Centres (ft)	Distance Between Ellipses (ft)	Separation Factor	Warning
Northridge Pad Sec.4-T5N-R66W						
Northridge 11-4D (Exist.) - Wellbore #1 - Wellbore #1						Out of range
Northridge 12-4D (Exist.) - Wellbore #1 - Wellbore #1	10,287.6	7,318.8	42.8	-89.3	0.324	Level 1, CC, ES, SF
Northridge 21-4D (Exist.) - Wellbore #1 - Wellbore #1						Out of range
Northridge 22-4D (Exist.) - Wellbore #1 - Wellbore #1	11,487.7	7,074.2	171.5	25.7	1.176	Level 2, CC, ES, SF
Northridge 4AD (Exist.) - Wellbore #1 - Wellbore #1	10,943.8	7,198.1	570.5	431.6	4.107	CC, ES
Northridge 4AD (Exist.) - Wellbore #1 - Wellbore #1	11,000.0	7,196.2	573.3	432.8	4.081	SF
Northridge 4KD (Exist.) - Wellbore #1 - Wellbore #1	10,733.4	7,243.4	770.6	624.4	5.271	CC, ES
Northridge 4KD (Exist.) - Wellbore #1 - Wellbore #1	10,800.0	7,243.6	773.4	625.4	5.225	SF
SRC Kelly Farms Pad Sec.4-T5N-R66W						
SRC Kelly Farms 12-4-3CHZ - Wellbore #1 - Plan #3 (6-	11,621.6	6,887.3	305.9	253.1	5.788	CC, ES, SF
SRC Kelly Farms 22-4-3CHZ - Wellbore #1 - Wellbore #1	11,621.6	6,883.0	411.8	292.3	3.444	CC, ES, SF
SRC Kelly Farms A-4-3CHZ - Wellbore #1 - Wellbore #1	11,621.6	6,886.0	432.7	311.9	3.581	CC, ES, SF
SRC Kelly Farms A-4-3NHZ - Wellbore #1 - Wellbore #1	11,621.6	6,794.0	661.3	535.0	5.236	CC, ES, SF
SRC Wiedeman Pad Sec.5-T5N-R66W						
SRC Wiedeman 22-5-4CHZ - Wellbore #1 - Plan #1 (6-2	800.0	800.0	15.0	11.6	4.450	CC, ES
SRC Wiedeman 22-5-4CHZ - Wellbore #1 - Plan #1 (6-2	11,600.0	11,824.1	283.6	71.7	1.338	Level 3, SF
SRC Wiedeman A-5-4CHZ - Wellbore #1 - Plan #1 (6-24	1,000.0	1,000.0	15.0	10.7	3.513	CC, ES
SRC Wiedeman A-5-4CHZ - Wellbore #1 - Plan #1 (6-24	11,621.6	11,742.4	277.8	64.8	1.304	Level 3, SF
SRC Wiedeman A-5-4NHZ - Wellbore #1 - Plan #1 (6-24	1,000.0	1,000.0	30.0	25.7	7.026	CC, ES
SRC Wiedeman A-5-4NHZ - Wellbore #1 - Plan #1 (6-24	11,621.6	11,537.8	439.8	178.0	1.680	SF

Offset Design		Northridge Pad Sec.4-T5N-R66W - Northridge 12-4D (Exist.) - Wellbore #1 - Wellbore #1										Offset Site Error:	0.0 ft
Survey Program:		182-MWD										Offset Well Error:	0.0 ft
Reference		Offset		Semi Major Axis			Distance						Warning
Measured Depth	Vertical Depth	Measured Depth	Vertical Depth	Reference	Offset	Highside Toolface	Offset Wellbore Centre		Between Centres	Between Ellipses	Minimum Separation	Separation Factor	
(ft)	(ft)	(ft)	(ft)	(ft)	(ft)	(°)	+N/-S (ft)	+E/-W (ft)	(ft)	(ft)	(ft)		
9,300.0	7,053.0	7,323.1	7,015.4	67.5	37.8	-95.92	-545.4	3,264.0	988.5	884.0	104.54	9.456	
9,400.0	7,053.0	7,322.7	7,015.0	70.2	37.8	-95.36	-545.4	3,264.0	888.6	781.3	107.34	8.279	
9,500.0	7,053.0	7,322.2	7,014.6	72.9	37.8	-94.80	-545.4	3,264.0	788.8	678.6	110.14	7.162	
9,600.0	7,053.0	7,321.8	7,014.2	75.6	37.8	-94.23	-545.3	3,264.0	688.9	576.0	112.94	6.100	
9,700.0	7,053.0	7,321.4	7,013.7	78.4	37.8	-93.66	-545.3	3,264.0	589.2	473.4	115.74	5.091	
9,800.0	7,053.0	7,320.9	7,013.3	81.1	37.8	-93.09	-545.3	3,264.0	489.5	371.0	118.53	4.130	

CC - Min centre to center distance or convergent point, SF - min separation factor, ES - min ellipse separation

Company:	Synergy Resources	Local Co-ordinate Reference:	Well SRC Wiedeman 22-5-4NHZ
Project:	Sec.5-T5N-R66W	TVD Reference:	WELL @ 4796.0ft (RKB - 13')
Reference Site:	SRC Wiedeman Pad Sec.5-T5N-R66W	MD Reference:	WELL @ 4796.0ft (RKB - 13')
Site Error:	0.0ft	North Reference:	True
Reference Well:	SRC Wiedeman 22-5-4NHZ	Survey Calculation Method:	Minimum Curvature
Well Error:	0.0ft	Output errors are at	2.00 sigma
Reference Wellbore	Wellbore #1	Database:	Landmark
Reference Design:	Plan #1 (6-24-14)	Offset TVD Reference:	Offset Datum

Offset Design Northridge Pad Sec.4-T5N-R66W - Northridge 12-4D (Exist.) - Wellbore #1 - Wellbore #1												Offset Site Error:	0.0 ft
Survey Program: 182-MWD												Offset Well Error:	0.0 ft
Reference	Offset	Semi Major Axis		Distance									
Measured Depth (ft)	Vertical Depth (ft)	Measured Depth (ft)	Vertical Depth (ft)	Reference (ft)	Offset (ft)	Highside Toolface (°)	Offset Wellbore Centre +N/-S (ft)	+E/-W (ft)	Between Centres (ft)	Between Ellipses (ft)	Minimum Separation (ft)	Separation Factor	Warning
9,900.0	7,053.0	7,320.5	7,012.9	83.9	37.8	-92.51	-545.3	3,264.0	390.0	268.6	121.32	3.214	
10,000.0	7,053.0	7,320.1	7,012.4	86.6	37.8	-91.92	-545.3	3,264.0	290.8	166.7	124.11	2.343	
10,100.0	7,053.0	7,319.6	7,012.0	89.4	37.8	-91.34	-545.3	3,264.0	192.4	65.5	126.89	1.517	
10,200.0	7,053.0	7,319.2	7,011.6	92.1	37.8	-90.75	-545.3	3,264.0	97.5	-32.1	129.66	0.752 Level 1	
10,287.6	7,053.0	7,318.8	7,011.2	94.5	37.8	-90.23	-545.3	3,264.0	42.8	-89.3	132.08	0.324 Level 1, CC, ES, SF	
10,300.0	7,053.0	7,318.7	7,011.1	94.9	37.8	-90.15	-545.3	3,264.0	44.6	-87.9	132.42	0.337 Level 1	
10,400.0	7,053.0	7,318.3	7,010.7	97.6	37.8	-89.55	-545.3	3,264.0	120.3	-14.9	135.18	0.890 Level 1	
10,500.0	7,053.0	7,317.8	7,010.2	100.4	37.8	-88.95	-545.3	3,264.0	216.7	78.7	137.92	1.571	
10,600.0	7,053.0	7,317.4	7,009.8	103.2	37.8	-88.35	-545.3	3,264.0	315.3	174.7	140.64	2.242	
10,700.0	7,053.0	7,316.9	7,009.3	105.9	37.8	-87.74	-545.3	3,264.0	414.6	271.2	143.36	2.892	
10,800.0	7,053.0	7,316.5	7,008.9	108.7	37.8	-87.13	-545.3	3,264.0	514.2	368.1	146.05	3.520	
10,900.0	7,053.0	7,316.0	7,008.4	111.5	37.8	-86.52	-545.3	3,264.0	613.9	465.1	148.73	4.127	
11,000.0	7,053.0	7,315.6	7,007.9	114.2	37.8	-85.90	-545.3	3,264.0	713.7	562.3	151.39	4.714	
11,100.0	7,053.0	7,315.1	7,007.5	117.0	37.8	-85.28	-545.3	3,264.0	813.5	659.5	154.04	5.281	
11,200.0	7,053.0	7,314.6	7,007.0	119.8	37.8	-84.66	-545.3	3,264.0	913.4	756.7	156.66	5.830	

Company:	Synergy Resources	Local Co-ordinate Reference:	Well SRC Wiedeman 22-5-4NHZ
Project:	Sec.5-T5N-R66W	TVD Reference:	WELL @ 4796.0ft (RKB - 13')
Reference Site:	SRC Wiedeman Pad Sec.5-T5N-R66W	MD Reference:	WELL @ 4796.0ft (RKB - 13')
Site Error:	0.0ft	North Reference:	True
Reference Well:	SRC Wiedeman 22-5-4NHZ	Survey Calculation Method:	Minimum Curvature
Well Error:	0.0ft	Output errors are at	2.00 sigma
Reference Wellbore	Wellbore #1	Database:	Landmark
Reference Design:	Plan #1 (6-24-14)	Offset TVD Reference:	Offset Datum

Offset Design Northridge Pad Sec.4-T5N-R66W - Northridge 22-4D (Exist.) - Wellbore #1 - Wellbore #1												Offset Site Error:	0.0 ft
Survey Program: 182-MWD												Offset Well Error:	0.0 ft
Reference	Offset	Semi Major Axis		Distance									
Measured Depth (ft)	Vertical Depth (ft)	Measured Depth (ft)	Vertical Depth (ft)	Reference (ft)	Offset (ft)	Highside Toolface (°)	Offset Wellbore Centre +N/-S (ft)	+E/-W (ft)	Between Centres (ft)	Between Ellipses (ft)	Minimum Separation (ft)	Separation Factor	Warning
10,600.0	7,053.0	7,095.0	7,026.8	103.2	18.3	95.26	-742.0	4,466.7	903.8	783.2	120.67	7.490	
10,700.0	7,053.0	7,092.7	7,024.5	105.9	18.3	94.48	-741.9	4,466.7	805.9	682.3	123.57	6.522	
10,800.0	7,053.0	7,090.3	7,022.1	108.7	18.3	93.70	-741.8	4,466.8	708.5	582.1	126.47	5.603	
10,900.0	7,053.0	7,087.9	7,019.7	111.5	18.3	92.91	-741.8	4,466.8	612.0	482.7	129.34	4.732	
11,000.0	7,053.0	7,085.6	7,017.4	114.2	18.3	92.13	-741.7	4,466.9	516.8	384.6	132.20	3.909	
11,100.0	7,053.0	7,083.2	7,015.0	117.0	18.3	91.35	-741.6	4,466.9	423.8	288.8	135.04	3.138	
11,200.0	7,053.0	7,080.9	7,012.7	119.8	18.3	90.57	-741.5	4,467.0	334.8	197.0	137.86	2.429	
11,300.0	7,053.0	7,078.6	7,010.4	122.6	18.3	89.79	-741.5	4,467.0	254.2	113.5	140.66	1.807	
11,400.0	7,053.0	7,076.2	7,008.1	125.3	18.3	89.02	-741.4	4,467.1	192.6	49.2	143.43	1.343 Level 3	
11,487.7	7,053.0	7,074.2	7,006.0	127.8	18.3	88.34	-741.4	4,467.1	171.5	25.7	145.85	1.176 Level 2, CC, ES, SF	
11,500.0	7,053.0	7,073.9	7,005.7	128.1	18.3	88.24	-741.3	4,467.1	172.0	25.8	146.19	1.176 Level 2	
11,600.0	7,053.0	7,071.6	7,003.4	130.9	18.3	87.47	-741.3	4,467.2	205.0	56.1	148.91	1.377 Level 3	
11,621.6	7,053.0	7,071.1	7,002.9	131.5	18.3	87.30	-741.3	4,467.2	217.6	68.1	149.50	1.456 Level 3	

Company:	Synergy Resources	Local Co-ordinate Reference:	Well SRC Wiedeman 22-5-4NHZ
Project:	Sec.5-T5N-R66W	TVD Reference:	WELL @ 4796.0ft (RKB - 13')
Reference Site:	SRC Wiedeman Pad Sec.5-T5N-R66W	MD Reference:	WELL @ 4796.0ft (RKB - 13')
Site Error:	0.0ft	North Reference:	True
Reference Well:	SRC Wiedeman 22-5-4NHZ	Survey Calculation Method:	Minimum Curvature
Well Error:	0.0ft	Output errors are at	2.00 sigma
Reference Wellbore	Wellbore #1	Database:	Landmark
Reference Design:	Plan #1 (6-24-14)	Offset TVD Reference:	Offset Datum

Offset Design Northridge Pad Sec.4-T5N-R66W - Northridge 4AD (Exist.) - Wellbore #1 - Wellbore #1													Offset Site Error:	0.0 ft
Survey Program: 182-MWD													Offset Well Error:	0.0 ft
Reference		Offset		Semi Major Axis			Distance							Warning
Measured Depth	Vertical Depth	Measured Depth	Vertical Depth	Reference	Offset	Highside Toolface	Offset Wellbore Centre		Between Centres	Between Ellipses	Minimum Separation	Separation Factor		
(ft)	(ft)	(ft)	(ft)	(ft)	(ft)	(°)	+N/-S (ft)	+E/-W (ft)	(ft)	(ft)	(ft)			
10,200.0	7,053.0	7,219.3	7,029.5	92.1	28.7	-91.96	-7.7	3,911.4	937.1	818.8	118.29	7.922		
10,300.0	7,053.0	7,216.7	7,027.0	94.9	28.7	-91.71	-7.7	3,911.5	860.0	738.9	121.06	7.103		
10,400.0	7,053.0	7,214.1	7,024.4	97.6	28.7	-91.45	-7.7	3,911.6	788.0	664.1	123.84	6.363		
10,500.0	7,053.0	7,211.4	7,021.7	100.4	28.7	-91.17	-7.7	3,911.6	722.7	596.0	126.61	5.708		
10,600.0	7,053.0	7,208.6	7,018.9	103.2	28.7	-90.89	-7.7	3,911.7	666.0	536.6	129.39	5.147		
10,700.0	7,053.0	7,205.7	7,016.0	105.9	28.7	-90.60	-7.7	3,911.8	620.4	488.2	132.16	4.694		
10,800.0	7,053.0	7,202.7	7,012.9	108.7	28.7	-90.30	-7.7	3,911.9	588.3	453.4	134.93	4.360		
10,900.0	7,053.0	7,199.5	7,009.8	111.5	28.7	-89.98	-7.7	3,912.0	572.2	434.5	137.70	4.155		
10,943.8	7,053.0	7,198.1	7,008.4	112.7	28.7	-89.84	-7.7	3,912.1	570.5	431.6	138.92	4.107 CC, ES		
11,000.0	7,053.0	7,196.2	7,006.5	114.2	28.7	-89.65	-7.8	3,912.1	573.3	432.8	140.47	4.081 SF		
11,100.0	7,053.0	7,192.9	7,003.1	117.0	28.6	-89.31	-7.8	3,912.3	591.5	448.2	143.24	4.129		
11,200.0	7,053.0	7,189.3	6,999.6	119.8	28.6	-88.96	-7.8	3,912.4	625.3	479.3	146.00	4.283		
11,300.0	7,053.0	7,185.6	6,995.9	122.6	28.6	-88.59	-7.8	3,912.5	672.5	523.7	148.75	4.521		
11,400.0	7,053.0	7,181.8	6,992.1	125.3	28.6	-88.20	-7.8	3,912.7	730.3	578.8	151.50	4.820		
11,500.0	7,053.0	7,177.8	6,988.1	128.1	28.6	-87.80	-7.8	3,912.8	796.5	642.3	154.24	5.164		
11,600.0	7,053.0	7,173.6	6,983.9	130.9	28.6	-87.38	-7.8	3,913.0	869.2	712.2	156.97	5.537		
11,621.6	7,053.0	7,172.6	6,983.0	131.5	28.6	-87.29	-7.8	3,913.0	885.6	728.1	157.56	5.621		

Company:	Synergy Resources	Local Co-ordinate Reference:	Well SRC Wiedeman 22-5-4NHZ
Project:	Sec.5-T5N-R66W	TVD Reference:	WELL @ 4796.0ft (RKB - 13')
Reference Site:	SRC Wiedeman Pad Sec.5-T5N-R66W	MD Reference:	WELL @ 4796.0ft (RKB - 13')
Site Error:	0.0ft	North Reference:	True
Reference Well:	SRC Wiedeman 22-5-4NHZ	Survey Calculation Method:	Minimum Curvature
Well Error:	0.0ft	Output errors are at	2.00 sigma
Reference Wellbore	Wellbore #1	Database:	Landmark
Reference Design:	Plan #1 (6-24-14)	Offset TVD Reference:	Offset Datum

Offset Design Northridge Pad Sec.4-T5N-R66W - Northridge 4KD (Exist.) - Wellbore #1 - Wellbore #1												Offset Site Error:	0.0 ft
Survey Program: 124-MWD												Offset Well Error:	0.0 ft
Reference	Offset	Semi Major Axis		Distance									
Measured Depth (ft)	Vertical Depth (ft)	Measured Depth (ft)	Vertical Depth (ft)	Reference (ft)	Offset (ft)	Highside Toolface (°)	Offset Wellbore Centre +N/-S (ft)	+E/-W (ft)	Between Centres (ft)	Between Ellipses (ft)	Minimum Separation (ft)	Separation Factor	Warning
10,100.0	7,053.0	7,241.8	7,004.0	89.4	43.3	89.48	-1,351.8	3,722.0	997.5	868.8	128.65	7.753	
10,200.0	7,053.0	7,242.1	7,004.2	92.1	43.3	89.49	-1,351.8	3,722.0	937.2	805.7	131.42	7.131	
10,300.0	7,053.0	7,242.3	7,004.5	94.9	43.3	89.51	-1,351.8	3,722.0	884.1	749.9	134.18	6.589	
10,400.0	7,053.0	7,242.6	7,004.7	97.6	43.3	89.53	-1,351.8	3,722.0	839.6	702.6	136.94	6.131	
10,500.0	7,053.0	7,242.8	7,005.0	100.4	43.3	89.55	-1,351.8	3,722.0	805.1	665.4	139.71	5.763	
10,600.0	7,053.0	7,243.1	7,005.2	103.2	43.3	89.57	-1,351.8	3,722.0	782.0	639.5	142.48	5.489	
10,700.0	7,053.0	7,243.3	7,005.5	105.9	43.3	89.59	-1,351.8	3,722.0	771.3	626.0	145.25	5.310	
10,733.4	7,053.0	7,243.4	7,005.6	106.8	43.3	89.60	-1,351.8	3,722.0	770.6	624.4	146.18	5.271 CC, ES	
10,800.0	7,053.0	7,243.6	7,005.7	108.7	43.3	89.61	-1,351.8	3,722.0	773.4	625.4	148.03	5.225 SF	
10,900.0	7,053.0	7,243.9	7,006.0	111.5	43.3	89.63	-1,351.8	3,722.0	788.4	637.6	150.80	5.228	
11,000.0	7,053.0	7,244.1	7,006.3	114.2	43.3	89.65	-1,351.8	3,722.0	815.4	661.8	153.58	5.309	
11,100.0	7,053.0	7,244.4	7,006.5	117.0	43.3	89.67	-1,351.8	3,722.0	853.3	697.0	156.36	5.458	
11,200.0	7,053.0	7,244.7	7,006.8	119.8	43.3	89.69	-1,351.8	3,722.0	900.8	741.7	159.14	5.661	
11,300.0	7,053.0	7,244.9	7,007.1	122.6	43.3	89.71	-1,351.8	3,722.0	956.5	794.6	161.92	5.907	

Company:	Synergy Resources	Local Co-ordinate Reference:	Well SRC Wiedeman 22-5-4NHZ
Project:	Sec.5-T5N-R66W	TVD Reference:	WELL @ 4796.0ft (RKB - 13')
Reference Site:	SRC Wiedeman Pad Sec.5-T5N-R66W	MD Reference:	WELL @ 4796.0ft (RKB - 13')
Site Error:	0.0ft	North Reference:	True
Reference Well:	SRC Wiedeman 22-5-4NHZ	Survey Calculation Method:	Minimum Curvature
Well Error:	0.0ft	Output errors are at	2.00 sigma
Reference Wellbore	Wellbore #1	Database:	Landmark
Reference Design:	Plan #1 (6-24-14)	Offset TVD Reference:	Offset Datum

Offset Design SRC Kelly Farms Pad Sec.4-T5N-R66W - SRC Kelly Farms 12-4-3CHZ - Wellbore #1 - Plan #3 (6-19-1												Offset Site Error:	0.0 ft
Survey Program: 0-MWD												Offset Well Error:	0.0 ft
Reference	Offset	Semi Major Axis		Distance									
Measured Depth (ft)	Vertical Depth (ft)	Measured Depth (ft)	Vertical Depth (ft)	Reference (ft)	Offset (ft)	Highside Toolface (°)	Offset Wellbore Centre +N/-S (ft)	+E/-W (ft)	Between Centres (ft)	Between Ellipses (ft)	Minimum Separation (ft)	Separation Factor	Warning
10,900.0	7,053.0	6,700.0	6,691.8	111.5	14.7	-6.64	-526.8	4,776.0	959.0	919.1	39.94	24.009	
11,000.0	7,053.0	6,728.9	6,719.0	114.2	14.8	-7.20	-526.9	4,785.6	864.9	823.7	41.17	21.008	
11,100.0	7,053.0	6,750.0	6,738.7	117.0	14.8	-7.66	-526.9	4,793.3	771.7	729.4	42.36	18.219	
11,200.0	7,053.0	6,766.6	6,754.0	119.8	14.9	-8.06	-527.0	4,799.7	679.4	635.9	43.53	15.608	
11,300.0	7,053.0	6,789.3	6,774.7	122.6	14.9	-8.68	-527.0	4,808.9	588.3	543.3	44.95	13.086	
11,400.0	7,053.0	6,815.1	6,797.9	125.3	15.0	-9.50	-527.1	4,820.2	498.4	451.8	46.66	10.681	
11,500.0	7,053.0	6,850.0	6,828.7	128.1	15.1	-10.88	-527.2	4,836.6	410.3	361.2	49.14	8.349	
11,600.0	7,053.0	6,879.2	6,853.9	130.9	15.2	-12.36	-527.3	4,851.3	324.2	272.2	51.98	6.237	
11,621.6	7,053.0	6,887.3	6,860.8	131.5	15.2	-12.84	-527.4	4,855.6	305.9	253.1	52.86	5.788 CC, ES, SF	

Company:	Synergy Resources	Local Co-ordinate Reference:	Well SRC Wiedeman 22-5-4NHZ
Project:	Sec.5-T5N-R66W	TVD Reference:	WELL @ 4796.0ft (RKB - 13')
Reference Site:	SRC Wiedeman Pad Sec.5-T5N-R66W	MD Reference:	WELL @ 4796.0ft (RKB - 13')
Site Error:	0.0ft	North Reference:	True
Reference Well:	SRC Wiedeman 22-5-4NHZ	Survey Calculation Method:	Minimum Curvature
Well Error:	0.0ft	Output errors are at	2.00 sigma
Reference Wellbore	Wellbore #1	Database:	Landmark
Reference Design:	Plan #1 (6-24-14)	Offset TVD Reference:	Offset Datum

Offset Design												Offset Site Error:	0.0 ft
SRC Kelly Farms Pad Sec.4-T5N-R66W - SRC Kelly Farms 22-4-3CHZ - Wellbore #1 - Wellbore #1												Offset Well Error:	0.0 ft
Survey Program: 80-MWD													
Reference		Offset		Semi Major Axis			Distance						
Measured Depth (ft)	Vertical Depth (ft)	Measured Depth (ft)	Vertical Depth (ft)	Reference (ft)	Offset (ft)	Highside Toolface (°)	Offset Wellbore Centre +N/-S (ft)	+E/-W (ft)	Between Centres (ft)	Between Ellipses (ft)	Minimum Separation (ft)	Separation Factor	Warning
11,000.0	7,053.0	6,742.9	6,730.1	114.2	14.5	36.30	-780.3	4,855.2	948.3	864.9	83.41	11.369	
11,100.0	7,053.0	6,760.7	6,747.0	117.0	14.5	37.89	-779.9	4,861.1	856.5	768.9	87.61	9.777	
11,200.0	7,053.0	6,795.0	6,779.0	119.8	14.6	41.27	-779.2	4,873.2	766.2	671.6	94.63	8.097	
11,300.0	7,053.0	6,795.0	6,779.0	122.6	14.6	41.27	-779.2	4,873.2	677.1	580.6	96.53	7.014	
11,400.0	7,053.0	6,821.0	6,803.0	125.3	14.7	44.17	-778.8	4,883.3	590.4	487.5	102.94	5.735	
11,500.0	7,053.0	6,844.2	6,824.0	128.1	14.8	47.01	-778.5	4,893.1	506.9	397.7	109.27	4.639	
11,600.0	7,053.0	6,883.0	6,858.4	130.9	14.9	52.33	-778.4	4,911.1	428.3	309.2	119.08	3.597	
11,621.6	7,053.0	6,883.0	6,858.4	131.5	14.9	52.33	-778.4	4,911.1	411.8	292.3	119.56	3.444 CC, ES, SF	

Company:	Synergy Resources	Local Co-ordinate Reference:	Well SRC Wiedeman 22-5-4NHZ
Project:	Sec.5-T5N-R66W	TVD Reference:	WELL @ 4796.0ft (RKB - 13')
Reference Site:	SRC Wiedeman Pad Sec.5-T5N-R66W	MD Reference:	WELL @ 4796.0ft (RKB - 13')
Site Error:	0.0ft	North Reference:	True
Reference Well:	SRC Wiedeman 22-5-4NHZ	Survey Calculation Method:	Minimum Curvature
Well Error:	0.0ft	Output errors are at	2.00 sigma
Reference Wellbore	Wellbore #1	Database:	Landmark
Reference Design:	Plan #1 (6-24-14)	Offset TVD Reference:	Offset Datum

Offset Design												Offset Site Error:	0.0 ft
SRC Kelly Farms Pad Sec.4-T5N-R66W - SRC Kelly Farms A-4-3CHZ - Wellbore #1 - Wellbore #1												Offset Well Error:	0.0 ft
Survey Program: 79-MWD													
Reference		Offset		Semi Major Axis			Distance						
Measured Depth (ft)	Vertical Depth (ft)	Measured Depth (ft)	Vertical Depth (ft)	Reference (ft)	Offset (ft)	Highside Toolface (°)	Offset Wellbore Centre +N/-S (ft)	+E/-W (ft)	Between Centres (ft)	Between Ellipses (ft)	Minimum Separation (ft)	Separation Factor	Warning
11,000.0	7,053.0	6,797.0	6,770.5	114.2	15.0	-43.70	-322.7	4,881.9	973.3	880.5	92.77	10.491	
11,100.0	7,053.0	6,797.0	6,770.5	117.0	15.0	-43.70	-322.7	4,881.9	880.6	785.9	94.77	9.293	
11,200.0	7,053.0	6,797.0	6,770.5	119.8	15.0	-43.70	-322.7	4,881.9	789.8	693.0	96.76	8.162	
11,300.0	7,053.0	6,828.5	6,800.1	122.6	15.0	-47.05	-324.6	4,892.4	699.9	596.2	103.73	6.747	
11,400.0	7,053.0	6,846.5	6,816.8	125.3	15.1	-49.13	-325.6	4,899.1	612.7	503.9	108.86	5.628	
11,500.0	7,053.0	6,886.0	6,852.6	128.1	15.2	-54.18	-327.6	4,915.7	529.2	411.1	118.05	4.483	
11,600.0	7,053.0	6,886.0	6,852.6	130.9	15.2	-54.18	-327.6	4,915.7	449.0	328.6	120.35	3.730	
11,621.6	7,053.0	6,886.0	6,852.6	131.5	15.2	-54.18	-327.6	4,915.7	432.7	311.9	120.85	3.581 CC, ES, SF	

Company:	Synergy Resources	Local Co-ordinate Reference:	Well SRC Wiedeman 22-5-4NHZ
Project:	Sec.5-T5N-R66W	TVD Reference:	WELL @ 4796.0ft (RKB - 13')
Reference Site:	SRC Wiedeman Pad Sec.5-T5N-R66W	MD Reference:	WELL @ 4796.0ft (RKB - 13')
Site Error:	0.0ft	North Reference:	True
Reference Well:	SRC Wiedeman 22-5-4NHZ	Survey Calculation Method:	Minimum Curvature
Well Error:	0.0ft	Output errors are at	2.00 sigma
Reference Wellbore	Wellbore #1	Database:	Landmark
Reference Design:	Plan #1 (6-24-14)	Offset TVD Reference:	Offset Datum

Offset Design												Offset Site Error:	0.0 ft
SRC Kelly Farms Pad Sec.4-T5N-R66W - SRC Kelly Farms A-4-3NHZ - Wellbore #1 - Wellbore #1												Offset Well Error:	0.0 ft
Survey Program: 174-MWD													
Reference		Offset		Semi Major Axis			Distance						
Measured Depth (ft)	Vertical Depth (ft)	Measured Depth (ft)	Vertical Depth (ft)	Reference (ft)	Offset (ft)	Highside Toolface (°)	Offset Wellbore Centre +N/-S (ft)	+E/-W (ft)	Between Centres (ft)	Between Ellipses (ft)	Minimum Separation (ft)	Separation Factor	Warning
11,100.0	7,053.0	6,615.0	6,573.5	117.0	16.3	-46.66	-87.6	4,824.2	999.6	900.6	98.98	10.099	
11,200.0	7,053.0	6,661.0	6,614.7	119.8	16.5	-49.58	-84.1	4,844.4	923.6	818.3	105.22	8.777	
11,300.0	7,053.0	6,704.0	6,651.1	122.6	16.6	-52.31	-81.7	4,867.1	853.3	742.1	111.17	7.676	
11,400.0	7,053.0	6,704.0	6,651.1	125.3	16.6	-52.31	-81.7	4,867.1	786.5	673.1	113.42	6.935	
11,500.0	7,053.0	6,737.4	6,678.1	128.1	16.7	-54.44	-80.2	4,886.7	726.0	607.3	118.63	6.119	
11,600.0	7,053.0	6,772.8	6,705.4	130.9	16.9	-56.71	-78.5	4,909.1	671.9	547.9	124.01	5.418	
11,621.6	7,053.0	6,794.0	6,721.1	131.5	17.0	-58.08	-77.6	4,923.3	661.3	535.0	126.30	5.236 CC, ES, SF	

Company:	Synergy Resources	Local Co-ordinate Reference:	Well SRC Wiedeman 22-5-4NHZ
Project:	Sec.5-T5N-R66W	TVD Reference:	WELL @ 4796.0ft (RKB - 13')
Reference Site:	SRC Wiedeman Pad Sec.5-T5N-R66W	MD Reference:	WELL @ 4796.0ft (RKB - 13')
Site Error:	0.0ft	North Reference:	True
Reference Well:	SRC Wiedeman 22-5-4NHZ	Survey Calculation Method:	Minimum Curvature
Well Error:	0.0ft	Output errors are at	2.00 sigma
Reference Wellbore	Wellbore #1	Database:	Landmark
Reference Design:	Plan #1 (6-24-14)	Offset TVD Reference:	Offset Datum

Offset Design SRC Wiedeman Pad Sec.5-T5N-R66W - SRC Wiedeman 22-5-4CHZ - Wellbore #1 - Plan #1 (6-24-14)													Offset Site Error:	0.0 ft
Survey Program: 0-MWD													Offset Well Error:	0.0 ft
Reference		Offset		Semi Major Axis			Distance							Warning
Measured Depth (ft)	Vertical Depth (ft)	Measured Depth (ft)	Vertical Depth (ft)	Reference (ft)	Offset (ft)	Highside Toolface (°)	Offset Wellbore Centre +N/-S (ft)	+E/-W (ft)	Between Centres (ft)	Between Ellipses (ft)	Minimum Separation (ft)	Separation Factor		
0.0	0.0	0.0	0.0	0.0	0.0	-174.68	-14.9	-1.4	15.0	15.0	0.00	N/A		
100.0	100.0	100.0	100.0	0.1	0.1	-174.68	-14.9	-1.4	15.0	14.8	0.22	66.743		
200.0	200.0	200.0	200.0	0.3	0.3	-174.68	-14.9	-1.4	15.0	14.3	0.67	22.248		
300.0	300.0	300.0	300.0	0.6	0.6	-174.68	-14.9	-1.4	15.0	13.9	1.12	13.349		
400.0	400.0	400.0	400.0	0.8	0.8	-174.68	-14.9	-1.4	15.0	13.4	1.57	9.535		
500.0	500.0	500.0	500.0	1.0	1.0	-174.68	-14.9	-1.4	15.0	13.0	2.02	7.416		
600.0	600.0	600.0	600.0	1.2	1.2	-174.68	-14.9	-1.4	15.0	12.5	2.47	6.068		
700.0	700.0	700.0	700.0	1.5	1.5	-174.68	-14.9	-1.4	15.0	12.1	2.92	5.134		
800.0	800.0	800.0	800.0	1.7	1.7	-174.68	-14.9	-1.4	15.0	11.6	3.37	4.450 CC, ES		
900.0	900.0	899.4	899.4	1.9	1.9	-173.54	-16.6	-1.9	16.7	12.9	3.79	4.405		
1,000.0	1,000.0	998.7	998.5	2.1	2.1	-171.21	-21.5	-3.3	21.9	17.7	4.20	5.204		
1,100.0	1,100.0	1,097.6	1,097.0	2.3	2.3	-9.26	-29.8	-5.7	28.7	24.1	4.58	6.271		
1,200.0	1,199.8	1,196.2	1,195.0	2.5	2.5	-8.58	-41.2	-9.1	35.6	30.7	4.95	7.196		
1,300.0	1,299.5	1,294.6	1,292.2	2.7	2.7	-8.40	-55.8	-13.4	42.5	37.1	5.33	7.971		
1,400.0	1,398.7	1,394.3	1,390.3	2.9	3.0	-8.65	-72.6	-18.3	47.9	42.2	5.72	8.378		
1,413.4	1,412.0	1,407.7	1,403.5	3.0	3.1	-8.72	-74.8	-19.0	48.4	42.6	5.77	8.382		
1,500.0	1,497.7	1,494.3	1,488.7	3.2	3.4	-9.23	-89.4	-23.2	51.2	45.1	6.14	8.342		
1,600.0	1,596.6	1,594.2	1,587.1	3.4	3.7	-9.75	-106.2	-28.2	54.5	47.9	6.58	8.287		
1,700.0	1,695.6	1,694.2	1,685.5	3.7	4.0	-10.21	-123.0	-33.1	57.8	50.8	7.02	8.226		
1,800.0	1,794.5	1,794.1	1,783.9	4.0	4.4	-10.62	-139.8	-38.0	61.1	53.6	7.48	8.165		
1,900.0	1,893.5	1,894.1	1,882.3	4.3	4.8	-10.99	-156.6	-43.0	64.4	56.4	7.95	8.102		
2,000.0	1,992.5	1,994.0	1,980.7	4.6	5.1	-11.33	-173.4	-47.9	67.7	59.3	8.42	8.040		
2,100.0	2,091.4	2,093.9	2,079.1	4.9	5.5	-11.63	-190.2	-52.8	71.0	62.1	8.89	7.981		
2,200.0	2,190.4	2,193.9	2,177.5	5.3	5.9	-11.91	-207.1	-57.8	74.3	64.9	9.37	7.923		
2,300.0	2,289.4	2,293.8	2,275.9	5.6	6.3	-12.16	-223.9	-62.7	77.6	67.7	9.86	7.868		
2,400.0	2,388.3	2,393.8	2,374.3	5.9	6.7	-12.39	-240.7	-67.6	80.9	70.5	10.35	7.816		
2,500.0	2,487.3	2,493.7	2,472.7	6.3	7.1	-12.60	-257.5	-72.5	84.2	73.3	10.84	7.766		
2,600.0	2,586.2	2,593.7	2,571.1	6.6	7.5	-12.80	-274.3	-77.5	87.5	76.2	11.34	7.719		
2,700.0	2,685.2	2,693.6	2,669.5	6.9	7.9	-12.98	-291.1	-82.4	90.8	79.0	11.83	7.674		
2,800.0	2,784.2	2,793.6	2,767.9	7.3	8.2	-13.15	-307.9	-87.3	94.1	81.8	12.33	7.631		
2,900.0	2,883.1	2,893.5	2,866.3	7.6	8.6	-13.31	-324.7	-92.3	97.4	84.6	12.83	7.591		
3,000.0	2,982.1	2,993.5	2,964.7	8.0	9.0	-13.46	-341.6	-97.2	100.7	87.4	13.34	7.552		
3,100.0	3,081.0	3,093.4	3,063.1	8.3	9.4	-13.60	-358.4	-102.1	104.0	90.2	13.84	7.516		
3,200.0	3,180.0	3,193.3	3,161.5	8.6	9.8	-13.73	-375.2	-107.1	107.4	93.0	14.35	7.482		
3,300.0	3,279.0	3,293.3	3,259.9	9.0	10.2	-13.85	-392.0	-112.0	110.7	95.8	14.86	7.449		
3,400.0	3,377.9	3,393.2	3,358.3	9.3	10.6	-13.96	-408.8	-116.9	114.0	98.6	15.37	7.418		
3,500.0	3,476.9	3,493.2	3,456.7	9.7	11.0	-14.07	-425.6	-121.9	117.3	101.4	15.88	7.388		
3,600.0	3,575.8	3,593.1	3,555.1	10.0	11.4	-14.18	-442.4	-126.8	120.6	104.2	16.39	7.360		
3,700.0	3,674.8	3,693.1	3,653.5	10.4	11.8	-14.27	-459.2	-131.7	123.9	107.0	16.90	7.333		
3,800.0	3,773.8	3,793.0	3,751.9	10.7	12.2	-14.37	-476.1	-136.7	127.2	109.8	17.41	7.307		
3,900.0	3,872.7	3,893.0	3,850.3	11.1	12.6	-14.45	-492.9	-141.6	130.5	112.6	17.92	7.283		
4,000.0	3,971.7	3,992.9	3,948.7	11.4	13.0	-14.54	-509.7	-146.5	133.9	115.4	18.44	7.260		
4,100.0	4,070.6	4,092.8	4,047.1	11.8	13.4	-14.62	-526.5	-151.5	137.2	118.2	18.95	7.237		
4,200.0	4,169.6	4,192.8	4,145.5	12.1	13.8	-14.69	-543.3	-156.4	140.5	121.0	19.47	7.216		
4,300.0	4,268.6	4,292.7	4,243.9	12.5	14.2	-14.76	-560.1	-161.3	143.8	123.8	19.99	7.196		
4,400.0	4,367.5	4,392.7	4,342.3	12.8	14.6	-14.83	-576.9	-166.3	147.1	126.6	20.50	7.176		
4,500.0	4,466.5	4,492.6	4,440.7	13.2	15.0	-14.90	-593.7	-171.2	150.4	129.4	21.02	7.157		
4,600.0	4,565.4	4,592.6	4,539.1	13.6	15.4	-14.96	-610.6	-176.1	153.8	132.2	21.54	7.139		
4,700.0	4,664.4	4,692.5	4,637.4	13.9	15.8	-15.02	-627.4	-181.0	157.1	135.0	22.05	7.122		
4,800.0	4,763.4	4,792.5	4,735.8	14.3	16.3	-15.08	-644.2	-186.0	160.4	137.8	22.57	7.105		
4,900.0	4,862.3	4,892.4	4,834.2	14.6	16.7	-15.13	-661.0	-190.9	163.7	140.6	23.09	7.089		
5,000.0	4,961.3	4,992.4	4,932.6	15.0	17.1	-15.19	-677.8	-195.8	167.0	143.4	23.61	7.074		

CC - Min centre to center distance or convergent point, SF - min separation factor, ES - min ellipse separation

Company:	Synergy Resources	Local Co-ordinate Reference:	Well SRC Wiedeman 22-5-4NHZ
Project:	Sec.5-T5N-R66W	TVD Reference:	WELL @ 4796.0ft (RKB - 13')
Reference Site:	SRC Wiedeman Pad Sec.5-T5N-R66W	MD Reference:	WELL @ 4796.0ft (RKB - 13')
Site Error:	0.0ft	North Reference:	True
Reference Well:	SRC Wiedeman 22-5-4NHZ	Survey Calculation Method:	Minimum Curvature
Well Error:	0.0ft	Output errors are at	2.00 sigma
Reference Wellbore	Wellbore #1	Database:	Landmark
Reference Design:	Plan #1 (6-24-14)	Offset TVD Reference:	Offset Datum

Offset Design												Offset Site Error:	0.0 ft
Survey Program: 0-MWD												Offset Well Error:	0.0 ft
Reference		Offset		Semi Major Axis			Distance						
Measured Depth (ft)	Vertical Depth (ft)	Measured Depth (ft)	Vertical Depth (ft)	Reference (ft)	Offset (ft)	Highside Toolface (°)	Offset Wellbore Centre +N/-S (ft)	+E/-W (ft)	Between Centres (ft)	Between Ellipses (ft)	Minimum Separation (ft)	Separation Factor	Warning
5,100.0	5,060.2	5,092.3	5,031.0	15.3	17.5	-15.24	-694.6	-200.8	170.3	146.2	24.13	7.059	
5,200.0	5,159.2	5,192.2	5,129.4	15.7	17.9	-15.29	-711.4	-205.7	173.7	149.0	24.65	7.045	
5,300.0	5,258.2	5,292.2	5,227.8	16.0	18.3	-15.33	-728.2	-210.6	177.0	151.8	25.17	7.031	
5,400.0	5,357.1	5,392.1	5,326.2	16.4	18.7	-15.38	-745.1	-215.6	180.3	154.6	25.69	7.018	
5,500.0	5,456.1	5,492.1	5,424.6	16.7	19.1	-15.42	-761.9	-220.5	183.6	157.4	26.21	7.005	
5,600.0	5,555.1	5,592.0	5,523.0	17.1	19.5	-15.47	-778.7	-225.4	186.9	160.2	26.73	6.993	
5,700.0	5,654.0	5,692.0	5,621.4	17.5	19.9	-15.51	-795.5	-230.4	190.2	163.0	27.25	6.981	
5,734.4	5,688.0	5,726.3	5,655.2	17.6	20.0	-15.52	-801.3	-232.1	191.4	164.0	27.43	6.977	
5,800.0	5,753.1	5,791.9	5,719.8	17.8	20.3	-15.50	-812.3	-235.3	194.3	166.5	27.75	7.001	
5,900.0	5,852.5	5,893.1	5,819.5	18.0	20.7	-15.27	-829.2	-240.3	201.4	173.2	28.16	7.151	
6,000.0	5,952.3	6,000.3	5,925.5	18.2	21.0	-14.93	-844.6	-244.8	209.4	180.9	28.50	7.348	
6,100.0	6,052.2	6,107.9	6,032.3	18.3	21.2	-14.58	-856.2	-248.2	217.1	188.3	28.78	7.544	
6,147.8	6,100.0	6,159.4	6,083.6	18.4	21.3	-174.73	-860.3	-249.4	220.7	181.4	39.32	5.613	
6,200.0	6,152.2	6,215.8	6,139.9	18.5	21.4	-174.55	-863.9	-250.4	224.1	184.5	39.51	5.671	
6,300.0	6,252.2	6,324.1	6,248.2	18.6	21.6	-174.36	-867.7	-251.6	227.7	187.9	39.81	5.719	
6,384.6	6,336.8	6,412.7	6,336.8	18.7	21.7	-174.34	-868.2	-251.7	228.1	188.1	40.05	5.696	
6,400.0	6,352.2	6,428.1	6,352.2	18.7	21.7	96.57	-868.2	-251.7	228.1	198.3	29.78	7.660	
6,450.0	6,402.1	6,478.1	6,402.1	18.8	21.8	97.24	-868.2	-251.7	228.5	198.6	29.86	7.652	
6,500.0	6,451.7	6,527.7	6,451.7	18.9	21.8	98.72	-868.2	-251.7	229.4	199.5	29.85	7.683	
6,550.0	6,500.8	6,576.7	6,500.8	18.9	21.9	100.93	-868.2	-251.7	231.0	201.3	29.79	7.757	
6,600.0	6,549.0	6,628.5	6,552.5	18.9	21.9	103.69	-868.2	-250.3	233.6	203.9	29.70	7.867	
6,650.0	6,596.2	6,681.8	6,605.5	18.9	22.0	106.39	-868.1	-245.0	236.8	207.1	29.63	7.991	
6,700.0	6,642.1	6,736.1	6,659.0	19.0	22.0	108.97	-867.9	-235.6	240.3	210.8	29.56	8.130	
6,750.0	6,686.6	6,791.4	6,712.6	19.0	22.0	111.41	-867.7	-221.8	244.2	214.7	29.49	8.281	
6,800.0	6,729.3	6,847.9	6,766.0	19.0	22.0	113.70	-867.5	-203.5	248.4	219.0	29.41	8.446	
6,850.0	6,770.1	6,905.4	6,818.8	19.0	22.1	115.84	-867.1	-180.7	252.8	223.5	29.32	8.622	
6,900.0	6,808.9	6,964.0	6,870.5	19.0	22.1	117.81	-866.7	-153.1	257.2	228.0	29.21	8.805	
6,950.0	6,845.3	7,023.7	6,920.7	19.0	22.0	119.60	-866.2	-120.7	261.6	232.5	29.11	8.989	
7,000.0	6,879.2	7,084.5	6,968.7	19.0	22.0	121.21	-865.6	-83.7	265.9	236.9	29.01	9.166	
7,050.0	6,910.5	7,146.2	7,014.2	19.0	22.0	122.64	-865.0	-41.9	269.9	241.0	28.95	9.325	
7,100.0	6,939.0	7,208.9	7,056.6	19.0	22.0	123.88	-864.3	4.3	273.6	244.7	28.96	9.449	
7,150.0	6,964.6	7,272.5	7,095.2	19.1	22.0	124.93	-863.5	54.7	276.9	247.8	29.10	9.517	
7,200.0	6,987.1	7,336.7	7,129.5	19.2	22.1	125.80	-862.7	109.0	279.8	250.5	29.30	9.548	
7,250.0	7,006.5	7,401.6	7,159.2	19.4	22.2	126.47	-861.8	166.7	282.0	252.3	29.71	9.491	
7,300.0	7,022.6	7,467.0	7,183.6	19.7	22.3	126.96	-860.9	227.3	283.7	253.3	30.33	9.353	
7,350.0	7,035.3	7,532.7	7,202.5	20.2	22.5	127.25	-859.9	290.2	284.7	253.5	31.15	9.139	
7,400.0	7,044.6	7,598.6	7,215.6	20.8	23.0	127.35	-858.9	354.8	285.1	252.9	32.20	8.854	
7,450.0	7,050.5	7,664.5	7,222.6	21.6	23.6	127.27	-857.9	420.2	284.7	251.3	33.47	8.507	
7,500.0	7,052.9	7,725.1	7,224.0	22.5	24.4	127.05	-857.0	480.8	283.9	249.0	34.86	8.144	
7,509.6	7,053.0	7,734.7	7,224.0	22.7	24.6	127.04	-856.9	490.4	283.9	248.8	35.10	8.088	
7,600.0	7,053.0	7,825.1	7,224.0	24.4	26.1	127.04	-855.5	580.8	283.9	245.9	37.98	7.473	
7,700.0	7,053.0	7,925.1	7,224.0	26.5	28.0	127.04	-854.0	680.8	283.9	242.4	41.42	6.853	
7,800.0	7,053.0	8,025.1	7,224.0	28.7	30.1	127.04	-852.4	780.8	283.8	238.8	45.06	6.299	
7,900.0	7,053.0	8,125.1	7,224.0	31.0	32.4	127.05	-850.9	880.7	283.8	235.0	48.86	5.810	
8,000.0	7,053.0	8,225.1	7,224.0	33.4	34.7	127.05	-849.4	980.7	283.8	231.1	52.77	5.378	
8,100.0	7,053.0	8,325.1	7,224.0	35.9	37.1	127.05	-847.9	1,080.7	283.8	227.0	56.79	4.998	
8,200.0	7,053.0	8,425.1	7,224.0	38.4	39.5	127.05	-846.3	1,180.7	283.8	222.9	60.89	4.662	
8,300.0	7,053.0	8,525.1	7,224.0	40.9	42.0	127.05	-844.8	1,280.7	283.8	218.8	65.04	4.363	
8,400.0	7,053.0	8,625.1	7,224.0	43.5	44.6	127.05	-843.3	1,380.7	283.8	214.6	69.25	4.098	
8,500.0	7,053.0	8,725.1	7,224.0	46.1	47.1	127.05	-841.8	1,480.7	283.8	210.3	73.51	3.861	
8,600.0	7,053.0	8,825.1	7,224.0	48.7	49.7	127.05	-840.2	1,580.7	283.8	206.0	77.80	3.648	
8,700.0	7,053.0	8,925.1	7,224.0	51.3	52.3	127.05	-838.7	1,680.7	283.8	201.7	82.11	3.456	

CC - Min centre to center distance or convergent point, SF - min separation factor, ES - min ellipse separation

Company:	Synergy Resources	Local Co-ordinate Reference:	Well SRC Wiedeman 22-5-4NHZ
Project:	Sec.5-T5N-R66W	TVD Reference:	WELL @ 4796.0ft (RKB - 13')
Reference Site:	SRC Wiedeman Pad Sec.5-T5N-R66W	MD Reference:	WELL @ 4796.0ft (RKB - 13')
Site Error:	0.0ft	North Reference:	True
Reference Well:	SRC Wiedeman 22-5-4NHZ	Survey Calculation Method:	Minimum Curvature
Well Error:	0.0ft	Output errors are at	2.00 sigma
Reference Wellbore	Wellbore #1	Database:	Landmark
Reference Design:	Plan #1 (6-24-14)	Offset TVD Reference:	Offset Datum

Offset Design SRC Wiedeman Pad Sec.5-T5N-R66W - SRC Wiedeman 22-5-4CHZ - Wellbore #1 - Plan #1 (6-24-14)													Offset Site Error:	0.0 ft
Survey Program: 0-MWD													Offset Well Error:	0.0 ft
Reference		Offset		Semi Major Axis			Distance						Warning	
Measured Depth (ft)	Vertical Depth (ft)	Measured Depth (ft)	Vertical Depth (ft)	Reference (ft)	Offset (ft)	Highside Toolface (°)	Offset Wellbore Centre +N/-S (ft)	+E/-W (ft)	Between Centres (ft)	Between Ellipses (ft)	Minimum Separation (ft)	Separation Factor		
8,800.0	7,053.0	9,025.1	7,224.0	54.0	55.0	127.05	-837.2	1,780.6	283.8	197.3	86.46	3.282		
8,900.0	7,053.0	9,125.1	7,224.0	56.7	57.6	127.05	-835.7	1,880.6	283.8	193.0	90.83	3.124		
9,000.0	7,053.0	9,225.1	7,224.0	59.4	60.3	127.06	-834.1	1,980.6	283.8	188.6	95.21	2.980		
9,100.0	7,053.0	9,325.1	7,224.0	62.0	62.9	127.06	-832.6	2,080.6	283.8	184.2	99.61	2.849		
9,200.0	7,053.0	9,425.1	7,224.0	64.7	65.6	127.06	-831.1	2,180.6	283.8	179.7	104.03	2.728		
9,300.0	7,053.0	9,525.1	7,224.0	67.5	68.3	127.06	-829.6	2,280.6	283.8	175.3	108.46	2.616		
9,400.0	7,053.0	9,625.1	7,224.0	70.2	71.0	127.06	-828.0	2,380.6	283.8	170.9	112.90	2.513		
9,500.0	7,053.0	9,725.1	7,224.0	72.9	73.7	127.06	-826.5	2,480.6	283.7	166.4	117.35	2.418		
9,600.0	7,053.0	9,825.1	7,224.0	75.6	76.5	127.06	-825.0	2,580.6	283.7	161.9	121.81	2.329		
9,700.0	7,053.0	9,925.1	7,224.0	78.4	79.2	127.06	-823.5	2,680.5	283.7	157.5	126.27	2.247		
9,800.0	7,053.0	10,025.1	7,224.0	81.1	81.9	127.06	-821.9	2,780.5	283.7	153.0	130.75	2.170		
9,900.0	7,053.0	10,125.1	7,224.0	83.9	84.6	127.06	-820.4	2,880.5	283.7	148.5	135.23	2.098		
10,000.0	7,053.0	10,225.1	7,224.0	86.6	87.4	127.06	-818.9	2,980.5	283.7	144.0	139.71	2.031		
10,100.0	7,053.0	10,325.1	7,224.0	89.4	90.1	127.07	-817.4	3,080.5	283.7	139.5	144.20	1.967		
10,200.0	7,053.0	10,425.1	7,224.0	92.1	92.9	127.07	-815.8	3,180.5	283.7	135.0	148.70	1.908		
10,300.0	7,053.0	10,525.1	7,224.0	94.9	95.6	127.07	-814.3	3,280.5	283.7	130.5	153.20	1.852		
10,400.0	7,053.0	10,625.1	7,224.0	97.6	98.4	127.07	-812.8	3,380.5	283.7	126.0	157.70	1.799		
10,500.0	7,053.0	10,725.1	7,224.0	100.4	101.1	127.07	-811.3	3,480.4	283.7	121.5	162.21	1.749		
10,600.0	7,053.0	10,825.1	7,224.0	103.2	103.9	127.07	-809.7	3,580.4	283.7	117.0	166.72	1.702		
10,700.0	7,053.0	10,925.1	7,224.0	105.9	106.6	127.07	-808.2	3,680.4	283.7	112.4	171.23	1.657		
10,800.0	7,053.0	11,025.1	7,224.0	108.7	109.4	127.07	-806.7	3,780.4	283.7	107.9	175.75	1.614		
10,900.0	7,053.0	11,125.1	7,224.0	111.5	112.2	127.07	-805.2	3,880.4	283.7	103.4	180.26	1.574		
11,000.0	7,053.0	11,225.1	7,224.0	114.2	114.9	127.07	-803.6	3,980.4	283.7	98.9	184.78	1.535		
11,100.0	7,053.0	11,325.1	7,224.0	117.0	117.7	127.07	-802.1	4,080.4	283.7	94.3	189.31	1.498 Level 3		
11,200.0	7,053.0	11,425.1	7,224.0	119.8	120.5	127.07	-800.6	4,180.4	283.6	89.8	193.83	1.463 Level 3		
11,300.0	7,053.0	11,525.1	7,224.0	122.6	123.2	127.08	-799.1	4,280.4	283.6	85.3	198.36	1.430 Level 3		
11,400.0	7,053.0	11,625.1	7,224.0	125.3	126.0	127.08	-797.5	4,380.3	283.6	80.8	202.89	1.398 Level 3		
11,500.0	7,053.0	11,725.1	7,224.0	128.1	128.8	127.08	-796.0	4,480.3	283.6	76.2	207.42	1.367 Level 3		
11,572.1	7,053.0	11,797.3	7,224.0	130.1	130.8	127.08	-794.9	4,552.5	283.6	72.9	210.69	1.346 Level 3		
11,600.0	7,053.0	11,824.1	7,224.0	130.9	131.5	127.08	-794.5	4,579.3	283.6	71.7	211.93	1.338 Level 3, SF		
11,621.6	7,053.0	11,824.1	7,224.0	131.5	131.5	127.08	-794.5	4,579.3	284.5	72.1	212.42	1.339 Level 3		

Company:	Synergy Resources	Local Co-ordinate Reference:	Well SRC Wiedeman 22-5-4NHZ
Project:	Sec.5-T5N-R66W	TVD Reference:	WELL @ 4796.0ft (RKB - 13')
Reference Site:	SRC Wiedeman Pad Sec.5-T5N-R66W	MD Reference:	WELL @ 4796.0ft (RKB - 13')
Site Error:	0.0ft	North Reference:	True
Reference Well:	SRC Wiedeman 22-5-4NHZ	Survey Calculation Method:	Minimum Curvature
Well Error:	0.0ft	Output errors are at	2.00 sigma
Reference Wellbore	Wellbore #1	Database:	Landmark
Reference Design:	Plan #1 (6-24-14)	Offset TVD Reference:	Offset Datum

Offset Design SRC Wiedeman Pad Sec.5-T5N-R66W - SRC Wiedeman A-5-4CHZ - Wellbore #1 - Plan #1 (6-24-14)													Offset Site Error:	0.0 ft
Survey Program: 0-MWD													Offset Well Error:	0.0 ft
Reference		Offset		Semi Major Axis			Distance							Warning
Measured Depth (ft)	Vertical Depth (ft)	Measured Depth (ft)	Vertical Depth (ft)	Reference (ft)	Offset (ft)	Highside Toolface (°)	Offset Wellbore Centre +N/-S (ft)	+E/-W (ft)	Between Centres (ft)	Between Ellipses (ft)	Minimum Separation (ft)	Separation Factor		
0.0	0.0	0.0	0.0	0.0	0.0	5.32	14.9	1.4	15.0	15.0	0.00	N/A		
100.0	100.0	100.0	100.0	0.1	0.1	5.32	14.9	1.4	15.0	14.8	0.22	66.743		
200.0	200.0	200.0	200.0	0.3	0.3	5.32	14.9	1.4	15.0	14.3	0.67	22.248		
300.0	300.0	300.0	300.0	0.6	0.6	5.32	14.9	1.4	15.0	13.9	1.12	13.349		
400.0	400.0	400.0	400.0	0.8	0.8	5.32	14.9	1.4	15.0	13.4	1.57	9.535		
500.0	500.0	500.0	500.0	1.0	1.0	5.32	14.9	1.4	15.0	13.0	2.02	7.416		
600.0	600.0	600.0	600.0	1.2	1.2	5.32	14.9	1.4	15.0	12.5	2.47	6.068		
700.0	700.0	700.0	700.0	1.5	1.5	5.32	14.9	1.4	15.0	12.1	2.92	5.134		
800.0	800.0	800.0	800.0	1.7	1.7	5.32	14.9	1.4	15.0	11.6	3.37	4.450		
900.0	900.0	900.0	900.0	1.9	1.9	5.32	14.9	1.4	15.0	11.2	3.82	3.926		
1,000.0	1,000.0	1,000.0	1,000.0	2.1	2.1	5.32	14.9	1.4	15.0	10.7	4.27	3.513 CC, ES		
1,100.0	1,100.0	1,100.0	1,100.0	2.3	2.4	167.13	14.9	1.4	16.7	12.0	4.69	3.559		
1,200.0	1,199.8	1,199.8	1,199.8	2.5	2.6	170.17	14.9	1.4	21.8	16.7	5.09	4.289		
1,300.0	1,299.5	1,300.5	1,300.4	2.7	2.8	172.19	13.3	0.6	28.8	23.3	5.46	5.265		
1,400.0	1,398.7	1,401.3	1,401.1	2.9	3.0	172.83	8.6	-1.7	35.7	29.9	5.81	6.148		
1,413.4	1,412.0	1,414.8	1,414.6	3.0	3.0	172.86	7.7	-2.1	36.7	30.8	5.86	6.257		
1,500.0	1,497.7	1,502.3	1,501.7	3.2	3.2	172.57	0.6	-5.5	41.5	35.3	6.19	6.701		
1,600.0	1,596.6	1,602.2	1,601.1	3.4	3.4	172.02	-8.4	-9.8	46.1	39.5	6.59	6.988		
1,700.0	1,695.6	1,702.0	1,700.5	3.7	3.6	171.57	-17.4	-14.1	50.7	43.7	7.01	7.232		
1,800.0	1,794.5	1,801.9	1,799.9	4.0	3.8	171.19	-26.4	-18.4	55.2	47.8	7.43	7.438		
1,900.0	1,893.5	1,901.8	1,899.3	4.3	4.0	170.87	-35.4	-22.7	59.8	52.0	7.86	7.615		
2,000.0	1,992.5	2,001.7	1,998.7	4.6	4.3	170.59	-44.4	-27.0	64.4	56.1	8.29	7.767		
2,100.0	2,091.4	2,101.6	2,098.1	4.9	4.5	170.36	-53.4	-31.3	69.0	60.3	8.74	7.898		
2,200.0	2,190.4	2,201.5	2,197.5	5.3	4.8	170.15	-62.4	-35.7	73.6	64.4	9.18	8.013		
2,300.0	2,289.4	2,301.4	2,296.9	5.6	5.1	169.96	-71.4	-40.0	78.2	68.5	9.64	8.112		
2,400.0	2,388.3	2,401.3	2,396.3	5.9	5.3	169.80	-80.4	-44.3	82.8	72.7	10.09	8.200		
2,500.0	2,487.3	2,501.2	2,495.6	6.3	5.6	169.65	-89.4	-48.6	87.3	76.8	10.55	8.278		
2,600.0	2,586.2	2,601.1	2,595.0	6.6	5.9	169.52	-98.4	-52.9	91.9	80.9	11.01	8.347		
2,700.0	2,685.2	2,701.0	2,694.4	6.9	6.1	169.40	-107.4	-57.2	96.5	85.0	11.48	8.408		
2,800.0	2,784.2	2,800.9	2,793.8	7.3	6.4	169.29	-116.4	-61.5	101.1	89.2	11.95	8.463		
2,900.0	2,883.1	2,900.8	2,893.2	7.6	6.7	169.19	-125.4	-65.8	105.7	93.3	12.42	8.512		
3,000.0	2,982.1	3,000.7	2,992.6	8.0	7.0	169.10	-134.4	-70.1	110.3	97.4	12.89	8.557		
3,100.0	3,081.0	3,100.6	3,092.0	8.3	7.3	169.02	-143.4	-74.5	114.9	101.5	13.36	8.597		
3,200.0	3,180.0	3,200.5	3,191.4	8.6	7.5	168.94	-152.4	-78.8	119.5	105.6	13.84	8.634		
3,300.0	3,279.0	3,300.4	3,290.8	9.0	7.8	168.87	-161.4	-83.1	124.1	109.8	14.32	8.667		
3,400.0	3,377.9	3,400.3	3,390.2	9.3	8.1	168.81	-170.4	-87.4	128.7	113.9	14.79	8.698		
3,500.0	3,476.9	3,500.1	3,489.6	9.7	8.4	168.74	-179.4	-91.7	133.3	118.0	15.27	8.726		
3,600.0	3,575.8	3,600.0	3,589.0	10.0	8.7	168.69	-188.4	-96.0	137.9	122.1	15.75	8.752		
3,700.0	3,674.8	3,699.9	3,688.4	10.4	9.0	168.63	-197.4	-100.3	142.4	126.2	16.23	8.775		
3,800.0	3,773.8	3,799.8	3,787.8	10.7	9.3	168.58	-206.3	-104.6	147.0	130.3	16.71	8.797		
3,900.0	3,872.7	3,899.7	3,887.2	11.1	9.6	168.53	-215.3	-109.0	151.6	134.4	17.20	8.818		
4,000.0	3,971.7	3,999.6	3,986.6	11.4	9.8	168.49	-224.3	-113.3	156.2	138.5	17.68	8.837		
4,100.0	4,070.6	4,099.5	4,086.0	11.8	10.1	168.45	-233.3	-117.6	160.8	142.7	18.16	8.854		
4,200.0	4,169.6	4,199.4	4,185.4	12.1	10.4	168.41	-242.3	-121.9	165.4	146.8	18.65	8.870		
4,300.0	4,268.6	4,299.3	4,284.8	12.5	10.7	168.37	-251.3	-126.2	170.0	150.9	19.13	8.886		
4,400.0	4,367.5	4,399.2	4,384.2	12.8	11.0	168.33	-260.3	-130.5	174.6	155.0	19.62	8.900		
4,500.0	4,466.5	4,499.1	4,483.5	13.2	11.3	168.30	-269.3	-134.8	179.2	159.1	20.10	8.913		
4,600.0	4,565.4	4,599.0	4,582.9	13.6	11.6	168.27	-278.3	-139.1	183.8	163.2	20.59	8.926		
4,700.0	4,664.4	4,698.9	4,682.3	13.9	11.9	168.24	-287.3	-143.4	188.4	167.3	21.08	8.938		
4,800.0	4,763.4	4,798.8	4,781.7	14.3	12.2	168.21	-296.3	-147.8	193.0	171.4	21.56	8.949		
4,900.0	4,862.3	4,898.7	4,881.1	14.6	12.5	168.18	-305.3	-152.1	197.6	175.5	22.05	8.959		
5,000.0	4,961.3	4,998.6	4,980.5	15.0	12.8	168.15	-314.3	-156.4	202.2	179.6	22.54	8.969		

CC - Min centre to center distance or convergent point, SF - min separation factor, ES - min ellipse separation

Company:	Synergy Resources	Local Co-ordinate Reference:	Well SRC Wiedeman 22-5-4NHZ
Project:	Sec.5-T5N-R66W	TVD Reference:	WELL @ 4796.0ft (RKB - 13')
Reference Site:	SRC Wiedeman Pad Sec.5-T5N-R66W	MD Reference:	WELL @ 4796.0ft (RKB - 13')
Site Error:	0.0ft	North Reference:	True
Reference Well:	SRC Wiedeman 22-5-4NHZ	Survey Calculation Method:	Minimum Curvature
Well Error:	0.0ft	Output errors are at	2.00 sigma
Reference Wellbore	Wellbore #1	Database:	Landmark
Reference Design:	Plan #1 (6-24-14)	Offset TVD Reference:	Offset Datum

Offset Design												Offset Site Error:	0.0ft
Survey Program: 0-MWD												Offset Well Error:	0.0ft
Reference		Offset		Semi Major Axis			Distance						
Measured Depth (ft)	Vertical Depth (ft)	Measured Depth (ft)	Vertical Depth (ft)	Reference (ft)	Offset (ft)	Highside Toolface (°)	Offset Wellbore Centre +N/-S (ft)	+E/-W (ft)	Between Centres (ft)	Between Ellipses (ft)	Minimum Separation (ft)	Separation Factor	Warning
5,100.0	5,060.2	5,098.5	5,079.9	15.3	13.1	168.13	-323.3	-160.7	206.7	183.7	23.03	8.978	
5,200.0	5,159.2	5,198.3	5,179.3	15.7	13.3	168.10	-332.3	-165.0	211.3	187.8	23.52	8.987	
5,300.0	5,258.2	5,298.2	5,278.7	16.0	13.6	168.08	-341.3	-169.3	215.9	191.9	24.00	8.996	
5,400.0	5,357.1	5,398.1	5,378.1	16.4	13.9	168.06	-350.3	-173.6	220.5	196.0	24.49	9.004	
5,500.0	5,456.1	5,498.0	5,477.5	16.7	14.2	168.04	-359.3	-177.9	225.1	200.1	24.98	9.011	
5,600.0	5,555.1	5,597.9	5,576.9	17.1	14.5	168.02	-368.3	-182.3	229.7	204.2	25.47	9.018	
5,700.0	5,654.0	5,697.8	5,676.3	17.5	14.8	168.00	-377.3	-186.6	234.3	208.3	25.96	9.025	
5,734.4	5,688.0	5,732.2	5,710.5	17.6	14.9	167.99	-380.4	-188.0	235.9	209.8	26.13	9.027	
5,800.0	5,753.1	5,797.7	5,775.7	17.8	15.1	167.95	-386.3	-190.9	238.2	211.7	26.45	9.003	
5,900.0	5,852.5	5,897.7	5,875.2	18.0	15.4	167.73	-395.3	-195.2	238.8	211.9	26.91	8.874	
6,000.0	5,952.3	5,997.7	5,974.6	18.2	15.7	167.32	-404.3	-199.5	236.1	208.7	27.35	8.632	
6,100.0	6,052.2	6,093.2	6,069.7	18.3	16.0	166.76	-412.4	-203.4	230.5	202.8	27.74	8.310	
6,147.8	6,100.0	6,137.5	6,113.9	18.4	16.0	6.17	-415.3	-204.8	227.6	193.6	34.04	6.687	
6,200.0	6,152.2	6,186.1	6,162.4	18.5	16.1	5.94	-417.8	-206.0	224.8	190.6	34.19	6.575	
6,300.0	6,252.2	6,279.2	6,255.5	18.6	16.3	5.68	-420.5	-207.2	221.8	187.4	34.47	6.436	
6,364.8	6,317.0	6,340.7	6,317.0	18.7	16.4	5.65	-420.8	-207.4	221.5	186.8	34.66	6.391	
6,384.6	6,336.8	6,360.5	6,336.8	18.7	16.4	5.65	-420.8	-207.4	221.5	186.8	34.72	6.380	
6,400.0	6,352.2	6,375.9	6,352.2	18.7	16.5	-83.53	-420.8	-207.4	221.5	192.6	28.83	7.681	
6,450.0	6,402.1	6,425.8	6,402.1	18.8	16.5	-84.27	-420.8	-207.4	221.2	192.1	29.04	7.615	
6,500.0	6,451.7	6,475.4	6,451.7	18.9	16.6	-85.93	-420.8	-207.4	220.6	191.3	29.32	7.525	
6,550.0	6,500.8	6,524.5	6,500.8	18.9	16.7	-88.45	-420.8	-207.4	220.1	190.5	29.67	7.420	
6,575.9	6,525.8	6,549.6	6,525.8	18.9	16.7	-90.00	-420.8	-207.1	220.0	190.2	29.87	7.367	
6,600.0	6,549.0	6,573.1	6,549.3	18.9	16.8	-91.46	-420.8	-206.1	220.1	190.1	30.06	7.323	
6,650.0	6,596.2	6,622.4	6,598.5	18.9	16.8	-94.47	-420.7	-201.5	220.8	190.3	30.42	7.256	
6,700.0	6,642.1	6,672.6	6,648.0	19.0	16.9	-97.47	-420.6	-193.3	222.0	191.3	30.74	7.223	
6,750.0	6,686.6	6,723.7	6,697.7	19.0	16.9	-100.42	-420.4	-181.5	224.0	193.0	31.00	7.225	
6,800.0	6,729.3	6,775.8	6,747.3	19.0	17.0	-103.30	-420.2	-165.8	226.5	195.3	31.17	7.265	
6,850.0	6,770.1	6,828.8	6,796.5	19.0	17.0	-106.08	-419.9	-146.2	229.5	198.2	31.27	7.340	
6,900.0	6,808.9	6,882.8	6,845.1	19.0	17.0	-108.74	-419.5	-122.5	233.0	201.7	31.29	7.447	
6,950.0	6,845.3	6,937.9	6,892.6	19.0	17.0	-111.26	-419.1	-94.6	236.9	205.6	31.25	7.581	
7,000.0	6,879.2	6,994.0	6,938.6	19.0	17.0	-113.63	-418.6	-62.6	241.1	209.9	31.17	7.734	
7,050.0	6,910.5	7,051.2	6,982.8	19.0	17.1	-115.84	-418.1	-26.3	245.5	214.4	31.10	7.893	
7,100.0	6,939.0	7,109.5	7,024.8	19.0	17.1	-117.88	-417.4	14.2	249.9	218.9	31.07	8.043	
7,150.0	6,964.6	7,168.9	7,063.9	19.1	17.1	-119.74	-416.8	58.7	254.4	223.3	31.13	8.171	
7,200.0	6,987.1	7,229.3	7,099.9	19.2	17.1	-121.41	-416.0	107.3	258.7	227.4	31.36	8.250	
7,250.0	7,006.5	7,290.7	7,132.1	19.4	17.3	-122.90	-415.2	159.5	262.9	231.1	31.74	8.284	
7,300.0	7,022.6	7,353.1	7,160.1	19.7	17.7	-124.20	-414.4	215.2	266.7	234.4	32.35	8.246	
7,350.0	7,035.3	7,416.3	7,183.4	20.2	18.4	-125.31	-413.5	274.0	270.2	236.9	33.22	8.133	
7,400.0	7,044.6	7,480.3	7,201.7	20.8	19.3	-126.23	-412.6	335.2	273.1	238.8	34.35	7.952	
7,450.0	7,050.5	7,544.9	7,214.5	21.6	20.4	-126.95	-411.6	398.6	275.6	239.8	35.73	7.711	
7,500.0	7,052.9	7,610.1	7,221.6	22.5	21.5	-127.49	-410.7	463.3	277.4	240.0	37.38	7.422	
7,509.6	7,053.0	7,622.6	7,222.2	22.7	21.8	-127.57	-410.5	475.8	277.7	240.0	37.72	7.362	
7,600.0	7,053.0	7,720.8	7,223.0	24.4	23.7	-127.70	-409.0	574.0	278.0	237.4	40.64	6.840	
7,700.0	7,053.0	7,820.8	7,223.0	26.5	25.8	-127.70	-407.5	674.0	278.0	234.0	44.02	6.316	
7,800.0	7,053.0	7,920.8	7,223.0	28.7	28.1	-127.70	-406.0	774.0	278.0	230.4	47.58	5.843	
7,900.0	7,053.0	8,020.8	7,223.0	31.0	30.4	-127.70	-404.4	874.0	278.0	226.7	51.30	5.420	
8,000.0	7,053.0	8,120.8	7,223.0	33.4	32.8	-127.70	-402.9	974.0	278.0	222.9	55.13	5.042	
8,100.0	7,053.0	8,220.8	7,223.0	35.9	35.2	-127.70	-401.4	1,073.9	278.0	218.9	59.07	4.707	
8,200.0	7,053.0	8,320.8	7,223.0	38.4	37.7	-127.70	-399.9	1,173.9	278.0	214.9	63.08	4.407	
8,300.0	7,053.0	8,420.8	7,223.0	40.9	40.3	-127.70	-398.4	1,273.9	278.0	210.8	67.16	4.139	
8,400.0	7,053.0	8,520.8	7,223.0	43.5	42.9	-127.70	-396.9	1,373.9	278.0	206.7	71.29	3.900	
8,500.0	7,053.0	8,620.8	7,223.0	46.1	45.5	-127.70	-395.4	1,473.9	278.0	202.5	75.46	3.684	

CC - Min centre to center distance or convergent point, SF - min separation factor, ES - min ellipse separation

Company:	Synergy Resources	Local Co-ordinate Reference:	Well SRC Wiedeman 22-5-4NHZ
Project:	Sec.5-T5N-R66W	TVD Reference:	WELL @ 4796.0ft (RKB - 13')
Reference Site:	SRC Wiedeman Pad Sec.5-T5N-R66W	MD Reference:	WELL @ 4796.0ft (RKB - 13')
Site Error:	0.0ft	North Reference:	True
Reference Well:	SRC Wiedeman 22-5-4NHZ	Survey Calculation Method:	Minimum Curvature
Well Error:	0.0ft	Output errors are at	2.00 sigma
Reference Wellbore	Wellbore #1	Database:	Landmark
Reference Design:	Plan #1 (6-24-14)	Offset TVD Reference:	Offset Datum

Offset Design SRC Wiedeman Pad Sec.5-T5N-R66W - SRC Wiedeman A-5-4CHZ - Wellbore #1 - Plan #1 (6-24-14)													Offset Site Error:	0.0 ft
Survey Program: 0-MWD													Offset Well Error:	0.0 ft
Reference		Offset		Semi Major Axis			Distance							Warning
Measured Depth (ft)	Vertical Depth (ft)	Measured Depth (ft)	Vertical Depth (ft)	Reference (ft)	Offset (ft)	Highside Toolface (°)	Offset Wellbore Centre +N/-S (ft)	+E/-W (ft)	Between Centres (ft)	Between Ellipses (ft)	Minimum Separation (ft)	Separation Factor		
8,600.0	7,053.0	8,720.8	7,223.0	48.7	48.1	-127.70	-393.9	1,573.9	278.0	198.3	79.68	3.489		
8,700.0	7,053.0	8,820.8	7,223.0	51.3	50.7	-127.70	-392.3	1,673.9	278.0	194.0	83.92	3.312		
8,800.0	7,053.0	8,920.8	7,223.0	54.0	53.4	-127.70	-390.8	1,773.9	278.0	189.8	88.19	3.152		
8,900.0	7,053.0	9,020.8	7,223.0	56.7	56.1	-127.71	-389.3	1,873.9	278.0	185.5	92.49	3.005		
9,000.0	7,053.0	9,120.8	7,223.0	59.4	58.8	-127.71	-387.8	1,973.8	278.0	181.1	96.81	2.871		
9,100.0	7,053.0	9,220.8	7,223.0	62.0	61.5	-127.71	-386.3	2,073.8	277.9	176.8	101.14	2.748		
9,200.0	7,053.0	9,320.8	7,223.0	64.7	64.2	-127.71	-384.8	2,173.8	277.9	172.5	105.49	2.635		
9,300.0	7,053.0	9,420.8	7,223.0	67.5	66.9	-127.71	-383.3	2,273.8	277.9	168.1	109.85	2.530		
9,400.0	7,053.0	9,520.8	7,223.0	70.2	69.6	-127.71	-381.8	2,373.8	277.9	163.7	114.23	2.433		
9,500.0	7,053.0	9,620.8	7,223.0	72.9	72.3	-127.71	-380.3	2,473.8	277.9	159.3	118.62	2.343		
9,600.0	7,053.0	9,720.8	7,223.0	75.6	75.1	-127.71	-378.7	2,573.8	277.9	154.9	123.01	2.259		
9,700.0	7,053.0	9,820.8	7,223.0	78.4	77.8	-127.71	-377.2	2,673.8	277.9	150.5	127.42	2.181		
9,800.0	7,053.0	9,920.8	7,223.0	81.1	80.6	-127.71	-375.7	2,773.8	277.9	146.1	131.83	2.108		
9,900.0	7,053.0	10,020.8	7,223.0	83.9	83.3	-127.71	-374.2	2,873.7	277.9	141.7	136.25	2.040		
10,000.0	7,053.0	10,120.8	7,223.0	86.6	86.1	-127.71	-372.7	2,973.7	277.9	137.2	140.68	1.975		
10,100.0	7,053.0	10,220.8	7,223.0	89.4	88.8	-127.72	-371.2	3,073.7	277.9	132.8	145.11	1.915		
10,200.0	7,053.0	10,320.8	7,223.0	92.1	91.6	-127.72	-369.7	3,173.7	277.9	128.3	149.54	1.858		
10,300.0	7,053.0	10,420.8	7,223.0	94.9	94.3	-127.72	-368.2	3,273.7	277.9	123.9	153.99	1.805		
10,400.0	7,053.0	10,520.8	7,223.0	97.6	97.1	-127.72	-366.6	3,373.7	277.9	119.5	158.43	1.754		
10,500.0	7,053.0	10,620.8	7,223.0	100.4	99.9	-127.72	-365.1	3,473.7	277.9	115.0	162.88	1.706		
10,600.0	7,053.0	10,720.8	7,223.0	103.2	102.6	-127.72	-363.6	3,573.7	277.9	110.5	167.34	1.661		
10,700.0	7,053.0	10,820.8	7,223.0	105.9	105.4	-127.72	-362.1	3,673.6	277.9	106.1	171.79	1.617		
10,800.0	7,053.0	10,920.8	7,223.0	108.7	108.2	-127.72	-360.6	3,773.6	277.9	101.6	176.25	1.577		
10,900.0	7,053.0	11,020.8	7,223.0	111.5	110.9	-127.72	-359.1	3,873.6	277.9	97.1	180.72	1.538		
11,000.0	7,053.0	11,120.8	7,223.0	114.2	113.7	-127.72	-357.6	3,973.6	277.9	92.7	185.18	1.500		
11,100.0	7,053.0	11,220.8	7,223.0	117.0	116.5	-127.72	-356.1	4,073.6	277.8	88.2	189.65	1.465 Level 3		
11,200.0	7,053.0	11,320.8	7,223.0	119.8	119.3	-127.72	-354.6	4,173.6	277.8	83.7	194.12	1.431 Level 3		
11,300.0	7,053.0	11,420.8	7,223.0	122.6	122.0	-127.72	-353.0	4,273.6	277.8	79.2	198.59	1.399 Level 3		
11,400.0	7,053.0	11,520.8	7,223.0	125.3	124.8	-127.73	-351.5	4,373.6	277.8	74.8	203.07	1.368 Level 3		
11,500.0	7,053.0	11,620.8	7,223.0	128.1	127.6	-127.73	-350.0	4,473.6	277.8	70.3	207.54	1.339 Level 3		
11,600.0	7,053.0	11,720.8	7,223.0	130.9	130.4	-127.73	-348.5	4,573.5	277.8	65.8	212.02	1.310 Level 3		
11,621.6	7,053.0	11,742.4	7,223.0	131.5	131.0	-127.73	-348.2	4,595.2	277.8	64.8	212.99	1.304 Level 3, SF		

Company:	Synergy Resources	Local Co-ordinate Reference:	Well SRC Wiedeman 22-5-4NHZ
Project:	Sec.5-T5N-R66W	TVD Reference:	WELL @ 4796.0ft (RKB - 13')
Reference Site:	SRC Wiedeman Pad Sec.5-T5N-R66W	MD Reference:	WELL @ 4796.0ft (RKB - 13')
Site Error:	0.0ft	North Reference:	True
Reference Well:	SRC Wiedeman 22-5-4NHZ	Survey Calculation Method:	Minimum Curvature
Well Error:	0.0ft	Output errors are at	2.00 sigma
Reference Wellbore	Wellbore #1	Database:	Landmark
Reference Design:	Plan #1 (6-24-14)	Offset TVD Reference:	Offset Datum

Offset Design SRC Wiedeman Pad Sec.5-T5N-R66W - SRC Wiedeman A-5-4NHZ - Wellbore #1 - Plan #1 (6-24-14)													Offset Site Error:	0.0 ft
Survey Program: 0-MWD													Offset Well Error:	0.0 ft
Reference		Offset		Semi Major Axis			Distance							Warning
Measured Depth (ft)	Vertical Depth (ft)	Measured Depth (ft)	Vertical Depth (ft)	Reference (ft)	Offset (ft)	Highside Toolface (°)	Offset Wellbore Centre +N/-S (ft)	+E/-W (ft)	Between Centres (ft)	Between Ellipses (ft)	Minimum Separation (ft)	Separation Factor		
0.0	0.0	0.0	0.0	0.0	0.0	5.32	29.9	2.8	30.0					
100.0	100.0	100.0	100.0	0.1	0.1	5.32	29.9	2.8	30.0	29.8	0.22	133.486		
200.0	200.0	200.0	200.0	0.3	0.3	5.32	29.9	2.8	30.0	29.3	0.67	44.495		
300.0	300.0	300.0	300.0	0.6	0.6	5.32	29.9	2.8	30.0	28.9	1.12	26.697		
400.0	400.0	400.0	400.0	0.8	0.8	5.32	29.9	2.8	30.0	28.4	1.57	19.069		
500.0	500.0	500.0	500.0	1.0	1.0	5.32	29.9	2.8	30.0	28.0	2.02	14.832		
600.0	600.0	600.0	600.0	1.2	1.2	5.32	29.9	2.8	30.0	27.5	2.47	12.135		
700.0	700.0	700.0	700.0	1.5	1.5	5.32	29.9	2.8	30.0	27.1	2.92	10.268		
800.0	800.0	800.0	800.0	1.7	1.7	5.32	29.9	2.8	30.0	26.6	3.37	8.899		
900.0	900.0	900.0	900.0	1.9	1.9	5.32	29.9	2.8	30.0	26.2	3.82	7.852		
1,000.0	1,000.0	1,000.0	1,000.0	2.1	2.1	5.32	29.9	2.8	30.0	25.7	4.27	7.026 CC, ES		
1,100.0	1,100.0	1,100.0	1,100.0	2.3	2.4	166.43	29.9	2.8	31.7	27.0	4.69	6.756		
1,200.0	1,199.8	1,199.8	1,199.8	2.5	2.6	168.32	29.9	2.8	36.8	31.7	5.09	7.231		
1,300.0	1,299.5	1,299.5	1,299.5	2.7	2.8	170.52	29.9	2.8	45.4	39.9	5.49	8.265		
1,400.0	1,398.7	1,398.7	1,398.7	2.9	3.0	172.49	29.9	2.8	57.4	51.5	5.89	9.749		
1,413.4	1,412.0	1,412.2	1,412.2	3.0	3.1	172.72	29.9	2.8	59.3	53.3	5.94	9.978		
1,500.0	1,497.7	1,499.9	1,499.9	3.2	3.2	173.39	28.5	1.7	70.2	63.9	6.29	11.160		
1,600.0	1,596.6	1,601.8	1,601.6	3.4	3.4	172.90	24.4	-1.7	79.8	73.1	6.67	11.954		
1,700.0	1,695.6	1,703.6	1,703.1	3.7	3.6	171.45	17.5	-7.3	86.3	79.2	7.07	12.197		
1,800.0	1,794.5	1,803.4	1,802.4	4.0	3.8	169.90	9.9	-13.5	91.9	84.4	7.49	12.271		
1,900.0	1,893.5	1,903.2	1,901.7	4.3	4.0	168.52	2.4	-19.8	97.6	89.7	7.92	12.326		
2,000.0	1,992.5	2,003.0	2,001.0	4.6	4.3	167.30	-5.2	-26.0	103.4	95.0	8.36	12.364		
2,100.0	2,091.4	2,102.9	2,100.4	4.9	4.5	166.21	-12.8	-32.2	109.1	100.3	8.81	12.389		
2,200.0	2,190.4	2,202.7	2,199.7	5.3	4.7	165.23	-20.4	-38.4	115.0	105.7	9.27	12.404		
2,300.0	2,289.4	2,302.5	2,299.0	5.6	5.0	164.34	-28.0	-44.6	120.8	111.1	9.74	12.411		
2,400.0	2,388.3	2,402.3	2,398.4	5.9	5.2	163.54	-35.5	-50.8	126.7	116.5	10.21	12.410		
2,500.0	2,487.3	2,502.1	2,497.7	6.3	5.5	162.80	-43.1	-57.0	132.6	121.9	10.69	12.405		
2,600.0	2,586.2	2,601.9	2,597.0	6.6	5.8	162.13	-50.7	-63.2	138.5	127.4	11.18	12.395		
2,700.0	2,685.2	2,701.7	2,696.4	6.9	6.0	161.52	-58.3	-69.4	144.5	132.8	11.67	12.382		
2,800.0	2,784.2	2,801.5	2,795.7	7.3	6.3	160.95	-65.8	-75.6	150.4	138.3	12.16	12.366		
2,900.0	2,883.1	2,901.4	2,895.0	7.6	6.6	160.43	-73.4	-81.8	156.4	143.7	12.66	12.349		
3,000.0	2,982.1	3,001.2	2,994.4	8.0	6.8	159.94	-81.0	-88.0	162.4	149.2	13.17	12.330		
3,100.0	3,081.0	3,101.0	3,093.7	8.3	7.1	159.49	-88.6	-94.2	168.4	154.7	13.68	12.311		
3,200.0	3,180.0	3,200.8	3,193.0	8.6	7.4	159.07	-96.1	-100.4	174.4	160.2	14.19	12.290		
3,300.0	3,279.0	3,300.6	3,292.3	9.0	7.6	158.68	-103.7	-106.6	180.4	165.7	14.70	12.270		
3,400.0	3,377.9	3,400.4	3,391.7	9.3	7.9	158.31	-111.3	-112.8	186.4	171.2	15.22	12.249		
3,500.0	3,476.9	3,500.2	3,491.0	9.7	8.2	157.97	-118.9	-119.0	192.4	176.7	15.74	12.228		
3,600.0	3,575.8	3,600.0	3,590.3	10.0	8.5	157.65	-126.4	-125.2	198.4	182.2	16.26	12.207		
3,700.0	3,674.8	3,699.9	3,689.7	10.4	8.8	157.34	-134.0	-131.4	204.5	187.7	16.78	12.186		
3,800.0	3,773.8	3,799.7	3,789.0	10.7	9.1	157.06	-141.6	-137.6	210.5	193.2	17.30	12.166		
3,900.0	3,872.7	3,899.5	3,888.3	11.1	9.3	156.79	-149.2	-143.8	216.6	198.7	17.83	12.146		
4,000.0	3,971.7	3,999.3	3,987.7	11.4	9.6	156.53	-156.7	-150.0	222.6	204.3	18.36	12.126		
4,100.0	4,070.6	4,099.1	4,087.0	11.8	9.9	156.29	-164.3	-156.2	228.7	209.8	18.89	12.107		
4,200.0	4,169.6	4,198.9	4,186.3	12.1	10.2	156.06	-171.9	-162.4	234.7	215.3	19.42	12.088		
4,300.0	4,268.6	4,298.7	4,285.6	12.5	10.5	155.84	-179.5	-168.6	240.8	220.9	19.95	12.070		
4,400.0	4,367.5	4,398.5	4,385.0	12.8	10.8	155.63	-187.0	-174.8	246.9	226.4	20.48	12.052		
4,500.0	4,466.5	4,494.4	4,480.5	13.2	11.0	155.55	-193.8	-180.4	253.4	232.5	20.98	12.078		
4,600.0	4,565.4	4,587.9	4,573.8	13.6	11.2	155.91	-198.2	-183.9	262.2	240.8	21.41	12.247		
4,700.0	4,664.4	4,680.9	4,666.7	13.9	11.4	156.69	-200.2	-185.6	273.4	251.6	21.80	12.542		
4,800.0	4,763.4	4,777.5	4,763.4	14.3	11.5	157.77	-200.3	-185.7	286.5	264.4	22.17	12.925		
4,900.0	4,862.3	4,876.5	4,862.3	14.6	11.7	158.81	-200.3	-185.7	299.9	277.4	22.54	13.303		
5,000.0	4,961.3	4,975.5	4,961.3	15.0	11.9	159.76	-200.3	-185.7	313.4	290.5	22.93	13.670		

CC - Min centre to center distance or convergent point, SF - min separation factor, ES - min ellipse separation

Company:	Synergy Resources	Local Co-ordinate Reference:	Well SRC Wiedeman 22-5-4NHZ
Project:	Sec.5-T5N-R66W	TVD Reference:	WELL @ 4796.0ft (RKB - 13')
Reference Site:	SRC Wiedeman Pad Sec.5-T5N-R66W	MD Reference:	WELL @ 4796.0ft (RKB - 13')
Site Error:	0.0ft	North Reference:	True
Reference Well:	SRC Wiedeman 22-5-4NHZ	Survey Calculation Method:	Minimum Curvature
Well Error:	0.0ft	Output errors are at	2.00 sigma
Reference Wellbore	Wellbore #1	Database:	Landmark
Reference Design:	Plan #1 (6-24-14)	Offset TVD Reference:	Offset Datum

Offset Design												Offset Site Error:	0.0 ft
Survey Program: 0-MWD												Offset Well Error:	0.0 ft
Reference		Offset		Semi Major Axis			Distance						
Measured Depth (ft)	Vertical Depth (ft)	Measured Depth (ft)	Vertical Depth (ft)	Reference (ft)	Offset (ft)	Highside Toolface (°)	Offset Wellbore Centre +N/-S (ft)	+E/-W (ft)	Between Centres (ft)	Between Ellipses (ft)	Minimum Separation (ft)	Separation Factor	Warning
5,100.0	5,060.2	5,074.4	5,060.2	15.3	12.1	160.63	-200.3	-185.7	326.9	303.6	23.31	14.023	
5,200.0	5,159.2	5,173.4	5,159.2	15.7	12.2	161.43	-200.3	-185.7	340.6	316.8	23.71	14.365	
5,300.0	5,258.2	5,272.3	5,258.2	16.0	12.4	162.17	-200.3	-185.7	354.2	330.1	24.11	14.695	
5,400.0	5,357.1	5,371.3	5,357.1	16.4	12.6	162.86	-200.3	-185.7	368.0	343.4	24.51	15.013	
5,500.0	5,456.1	5,470.3	5,456.1	16.7	12.8	163.49	-200.3	-185.7	381.7	356.8	24.92	15.321	
5,600.0	5,555.1	5,569.2	5,555.1	17.1	13.0	164.08	-200.3	-185.7	395.6	370.2	25.33	15.618	
5,700.0	5,654.0	5,668.2	5,654.0	17.5	13.2	164.63	-200.3	-185.7	409.4	383.7	25.74	15.905	
5,734.4	5,688.0	5,702.2	5,688.0	17.6	13.2	164.82	-200.3	-185.7	414.2	388.3	25.88	16.002	
5,800.0	5,753.1	5,767.3	5,753.1	17.8	13.3	165.17	-200.3	-185.7	422.6	396.4	26.16	16.152	
5,900.0	5,852.5	5,866.7	5,852.5	18.0	13.5	165.57	-200.3	-185.7	432.6	406.1	26.55	16.294	
6,000.0	5,952.3	5,966.5	5,952.3	18.2	13.7	165.83	-200.3	-185.7	439.3	412.4	26.92	16.321	
6,100.0	6,052.2	6,066.4	6,052.2	18.3	13.9	165.95	-200.3	-185.7	442.6	415.4	27.26	16.237	
6,147.8	6,100.0	6,114.2	6,100.0	18.4	14.0	5.64	-200.3	-185.7	443.0	411.1	31.88	13.896	
6,200.0	6,152.2	6,166.4	6,152.2	18.5	14.1	5.64	-200.3	-185.7	443.0	410.9	32.06	13.819	
6,300.0	6,252.2	6,266.4	6,252.2	18.6	14.3	5.64	-200.3	-185.7	443.0	410.6	32.38	13.680	
6,384.6	6,336.8	6,351.0	6,336.8	18.7	14.4	5.64	-200.3	-185.7	443.0	410.3	32.66	13.563	
6,400.0	6,352.2	6,365.4	6,351.2	18.7	14.5	-83.50	-200.3	-185.6	443.0	414.6	28.37	15.613	
6,450.0	6,402.1	6,412.1	6,397.9	18.8	14.6	-83.52	-200.3	-183.1	443.0	414.5	28.52	15.530	
6,500.0	6,451.7	6,458.9	6,444.3	18.9	14.6	-83.57	-200.2	-177.6	442.9	414.3	28.65	15.458	
6,550.0	6,500.8	6,505.6	6,490.3	18.9	14.7	-83.66	-200.1	-169.1	442.9	414.1	28.76	15.396	
6,600.0	6,549.0	6,552.5	6,535.6	18.9	14.7	-83.77	-199.9	-157.5	442.8	413.9	28.86	15.340	
6,650.0	6,596.2	6,600.0	6,580.8	18.9	14.8	-83.91	-199.7	-142.8	442.7	413.7	28.95	15.288	
6,700.0	6,642.1	6,646.3	6,623.8	19.0	14.8	-84.07	-199.4	-125.7	442.5	413.5	29.05	15.235	
6,750.0	6,686.6	6,693.3	6,666.3	19.0	14.8	-84.27	-199.1	-105.4	442.4	413.2	29.15	15.176	
6,800.0	6,729.3	6,740.4	6,707.4	19.0	14.9	-84.49	-198.8	-82.4	442.2	412.9	29.28	15.103	
6,850.0	6,770.1	6,787.7	6,746.9	19.0	14.9	-84.74	-198.4	-56.7	442.0	412.6	29.45	15.009	
6,900.0	6,808.9	6,835.0	6,784.8	19.0	14.9	-85.01	-197.9	-28.3	441.8	412.1	29.68	14.885	
6,950.0	6,845.3	6,882.5	6,820.8	19.0	15.0	-85.31	-197.5	2.6	441.6	411.6	29.99	14.725	
7,000.0	6,879.2	6,930.1	6,854.8	19.0	15.0	-85.62	-197.0	35.9	441.4	411.0	30.40	14.519	
7,050.0	6,910.5	6,977.9	6,886.7	19.0	15.2	-85.96	-196.4	71.6	441.2	410.3	30.93	14.264	
7,100.0	6,939.0	7,025.8	6,916.1	19.0	15.5	-86.32	-195.9	109.4	441.0	409.4	31.60	13.957	
7,150.0	6,964.6	7,073.9	6,943.1	19.1	15.9	-86.70	-195.3	149.2	440.9	408.4	32.42	13.598	
7,200.0	6,987.1	7,122.2	6,967.4	19.2	16.4	-87.09	-194.6	190.9	440.7	407.3	33.40	13.194	
7,250.0	7,006.5	7,170.7	6,988.9	19.4	16.9	-87.50	-194.0	234.3	440.6	406.0	34.55	12.751	
7,300.0	7,022.6	7,219.4	7,007.5	19.7	17.6	-87.92	-193.3	279.3	440.4	404.6	35.87	12.280	
7,350.0	7,035.3	7,268.3	7,023.1	20.2	18.3	-88.35	-192.6	325.7	440.3	403.0	37.34	11.792	
7,400.0	7,044.6	7,317.4	7,035.5	20.8	19.1	-88.79	-191.9	373.2	440.2	401.3	38.96	11.300	
7,450.0	7,050.5	7,366.8	7,044.7	21.6	19.9	-89.23	-191.1	421.7	440.2	399.4	40.71	10.812	
7,500.0	7,052.9	7,416.4	7,050.5	22.5	20.9	-89.69	-190.4	470.9	440.1	397.5	42.57	10.338	
7,509.6	7,053.0	7,425.9	7,051.2	22.7	21.1	-89.77	-190.3	480.4	440.1	397.2	42.94	10.250	
7,600.0	7,053.0	7,516.2	7,053.0	24.4	22.9	-90.00	-188.9	570.7	440.1	393.6	46.56	9.453	
7,700.0	7,053.0	7,616.2	7,053.0	26.5	25.0	-90.00	-187.4	670.7	440.1	389.3	50.83	8.659	
7,800.0	7,053.0	7,716.2	7,053.0	28.7	27.2	-90.00	-185.9	770.7	440.1	384.8	55.34	7.953	
7,900.0	7,053.0	7,816.2	7,053.0	31.0	29.6	-90.00	-184.4	870.6	440.1	380.1	60.04	7.330	
8,000.0	7,053.0	7,916.2	7,053.0	33.4	32.0	-90.00	-182.8	970.6	440.1	375.2	64.88	6.783	
8,100.0	7,053.0	8,016.2	7,053.0	35.9	34.5	-90.00	-181.3	1,070.6	440.1	370.2	69.84	6.302	
8,200.0	7,053.0	8,116.2	7,053.0	38.4	37.0	-90.00	-179.8	1,170.6	440.1	365.2	74.89	5.877	
8,300.0	7,053.0	8,216.2	7,053.0	40.9	39.6	-90.00	-178.3	1,270.6	440.1	360.1	80.01	5.500	
8,400.0	7,053.0	8,316.2	7,053.0	43.5	42.2	-90.00	-176.8	1,370.6	440.1	354.9	85.20	5.165	
8,500.0	7,053.0	8,416.2	7,053.0	46.1	44.8	-90.00	-175.3	1,470.6	440.0	349.6	90.43	4.866	
8,600.0	7,053.0	8,516.2	7,053.0	48.7	47.4	-90.00	-173.8	1,570.6	440.0	344.3	95.71	4.598	
8,700.0	7,053.0	8,616.2	7,053.0	51.3	50.1	-90.00	-172.3	1,670.5	440.0	339.0	101.03	4.356	

CC - Min centre to center distance or convergent point, SF - min separation factor, ES - min ellipse separation

Company:	Synergy Resources	Local Co-ordinate Reference:	Well SRC Wiedeman 22-5-4NHZ
Project:	Sec.5-T5N-R66W	TVD Reference:	WELL @ 4796.0ft (RKB - 13')
Reference Site:	SRC Wiedeman Pad Sec.5-T5N-R66W	MD Reference:	WELL @ 4796.0ft (RKB - 13')
Site Error:	0.0ft	North Reference:	True
Reference Well:	SRC Wiedeman 22-5-4NHZ	Survey Calculation Method:	Minimum Curvature
Well Error:	0.0ft	Output errors are at	2.00 sigma
Reference Wellbore	Wellbore #1	Database:	Landmark
Reference Design:	Plan #1 (6-24-14)	Offset TVD Reference:	Offset Datum

Offset Design SRC Wiedeman Pad Sec.5-T5N-R66W - SRC Wiedeman A-5-4NHZ - Wellbore #1 - Plan #1 (6-24-14)												Offset Site Error:	0.0 ft
Survey Program: 0-MWD												Offset Well Error:	0.0 ft
Reference		Offset		Semi Major Axis			Distance						
Measured Depth (ft)	Vertical Depth (ft)	Measured Depth (ft)	Vertical Depth (ft)	Reference (ft)	Offset (ft)	Highside Toolface (°)	Offset Wellbore Centre +N/-S (ft)	+E/-W (ft)	Between Centres (ft)	Between Ellipses (ft)	Minimum Separation (ft)	Separation Factor	Warning
8,800.0	7,053.0	8,716.2	7,053.0	54.0	52.8	-90.00	-170.8	1,770.5	440.0	333.7	106.37	4.137	
8,900.0	7,053.0	8,816.2	7,053.0	56.7	55.4	-90.00	-169.2	1,870.5	440.0	328.3	111.74	3.938	
9,000.0	7,053.0	8,916.2	7,053.0	59.4	58.1	-90.00	-167.7	1,970.5	440.0	322.9	117.14	3.756	
9,100.0	7,053.0	9,016.2	7,053.0	62.0	60.8	-90.00	-166.2	2,070.5	440.0	317.5	122.55	3.590	
9,200.0	7,053.0	9,116.2	7,053.0	64.7	63.6	-90.00	-164.7	2,170.5	440.0	312.0	127.98	3.438	
9,300.0	7,053.0	9,216.2	7,053.0	67.5	66.3	-90.00	-163.2	2,270.5	440.0	306.6	133.42	3.298	
9,400.0	7,053.0	9,316.2	7,053.0	70.2	69.0	-90.00	-161.7	2,370.5	440.0	301.1	138.88	3.168	
9,500.0	7,053.0	9,416.2	7,053.0	72.9	71.7	-90.00	-160.2	2,470.5	440.0	295.6	144.35	3.048	
9,600.0	7,053.0	9,516.2	7,053.0	75.6	74.5	-90.00	-158.7	2,570.4	440.0	290.1	149.83	2.936	
9,700.0	7,053.0	9,616.2	7,053.0	78.4	77.2	-90.00	-157.1	2,670.4	440.0	284.6	155.32	2.833	
9,800.0	7,053.0	9,716.2	7,053.0	81.1	80.0	-90.00	-155.6	2,770.4	440.0	279.1	160.82	2.736	
9,900.0	7,053.0	9,816.2	7,053.0	83.9	82.7	-90.00	-154.1	2,870.4	440.0	273.6	166.33	2.645	
10,000.0	7,053.0	9,916.2	7,053.0	86.6	85.5	-90.00	-152.6	2,970.4	440.0	268.1	171.84	2.560	
10,100.0	7,053.0	10,016.2	7,053.0	89.4	88.2	-90.00	-151.1	3,070.4	439.9	262.6	177.36	2.481	
10,200.0	7,053.0	10,116.2	7,053.0	92.1	91.0	-90.00	-149.6	3,170.4	439.9	257.1	182.88	2.406	
10,300.0	7,053.0	10,216.2	7,053.0	94.9	93.8	-90.00	-148.1	3,270.4	439.9	251.5	188.41	2.335	
10,400.0	7,053.0	10,316.2	7,053.0	97.6	96.5	-90.00	-146.6	3,370.4	439.9	246.0	193.94	2.268	
10,500.0	7,053.0	10,416.2	7,053.0	100.4	99.3	-90.00	-145.1	3,470.3	439.9	240.4	199.48	2.205	
10,600.0	7,053.0	10,516.2	7,053.0	103.2	102.1	-90.00	-143.5	3,570.3	439.9	234.9	205.02	2.146	
10,700.0	7,053.0	10,616.2	7,053.0	105.9	104.9	-90.00	-142.0	3,670.3	439.9	229.3	210.57	2.089	
10,800.0	7,053.0	10,716.2	7,053.0	108.7	107.6	-90.00	-140.5	3,770.3	439.9	223.8	216.12	2.035	
10,900.0	7,053.0	10,816.2	7,053.0	111.5	110.4	-90.00	-139.0	3,870.3	439.9	218.2	221.67	1.984	
11,000.0	7,053.0	10,916.2	7,053.0	114.2	113.2	-90.00	-137.5	3,970.3	439.9	212.7	227.23	1.936	
11,100.0	7,053.0	11,016.2	7,053.0	117.0	116.0	-90.00	-136.0	4,070.3	439.9	207.1	232.78	1.890	
11,200.0	7,053.0	11,116.2	7,053.0	119.8	118.7	-90.00	-134.5	4,170.3	439.9	201.5	238.34	1.846	
11,300.0	7,053.0	11,216.2	7,053.0	122.6	121.5	-90.00	-133.0	4,270.3	439.9	196.0	243.91	1.803	
11,400.0	7,053.0	11,316.2	7,053.0	125.3	124.3	-90.00	-131.4	4,370.2	439.9	190.4	249.47	1.763	
11,500.0	7,053.0	11,416.2	7,053.0	128.1	127.1	-90.00	-129.9	4,470.2	439.9	184.8	255.04	1.725	
11,600.0	7,053.0	11,516.2	7,053.0	130.9	129.9	-90.00	-128.4	4,570.2	439.8	179.2	260.60	1.688	
11,621.6	7,053.0	11,537.8	7,053.0	131.5	130.5	-90.00	-128.1	4,591.8	439.8	178.0	261.81	1.680 SF	

Reference Depths are relative to WELL @ 4796.0ft (RKB - 13')
Offset Depths are relative to Offset Datum
Central Meridian is -105.500000 °

Coordinates are relative to: SRC Wiedeman 22-5-4NHZ
Coordinate System is US State Plane 1983, Colorado Northern Zone
Grid Convergence at Surface is: 0.45°



Company: Synergy Resources
Project: Sec.5-T5N-R66W
Reference Site: SRC Wiedeman Pad Sec.5-T5N-R66W
Site Error: 0.0ft
Reference Well: SRC Wiedeman 22-5-4NHZ
Well Error: 0.0ft
Reference Wellbore: Wellbore #1
Reference Design: Plan #1 (6-24-14)

Local Co-ordinate Reference: Well SRC Wiedeman 22-5-4NHZ
TVD Reference: WELL @ 4796.0ft (RKB - 13')
MD Reference: WELL @ 4796.0ft (RKB - 13')
North Reference: True
Survey Calculation Method: Minimum Curvature
Output errors are at 2.00 sigma
Database: Landmark
Offset TVD Reference: Offset Datum

Reference Depths are relative to WELL @ 4796.0ft (RKB - 13')

Offset Depths are relative to Offset Datum

Central Meridian is -105.500000 °

Coordinates are relative to: SRC Wiedeman 22-5-4NHZ

Coordinate System is US State Plane 1983, Colorado Northern Zone

Grid Convergence at Surface is: 0.45°

