

# Synergy Resources

Well Name: **SRC Wiedeman A-5-4CHZ**

Surface Location: SRC Wiedeman Pad Sec.5-T5N-R66W  
North American Datum 1983 , US State Plane 1983 , Colorado Northern Zone

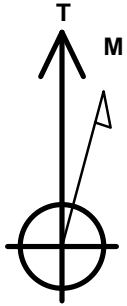
Ground Elevation: 4783.0

+N/-S	+E/-W	Northing	Easting	Latitude	Longitude	Slot
0.0	0.0	1401417.49	3194377.92	40.433192	-104.801731	

RKB - 13' WELL @ 4796.0ft (RKB - 13')

## WELLBORE TARGET DETAILS

Name	TVD	+N/-S	+E/-W	Shape
SHL 1452'FNL & 2438'FEL, Sec.5		0.0	0.0	Point
BHL 1884'FNL & 2192'FWL, Sec.4	7223.0	-362.8	4616.0	Point



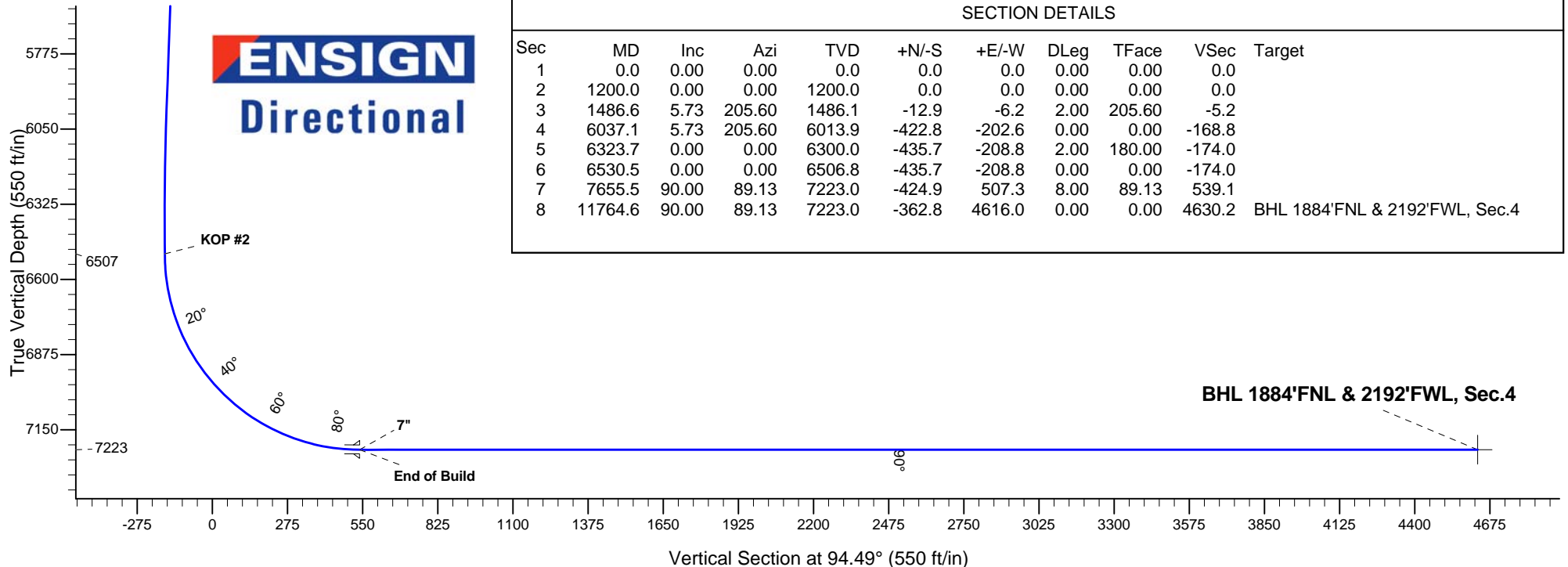
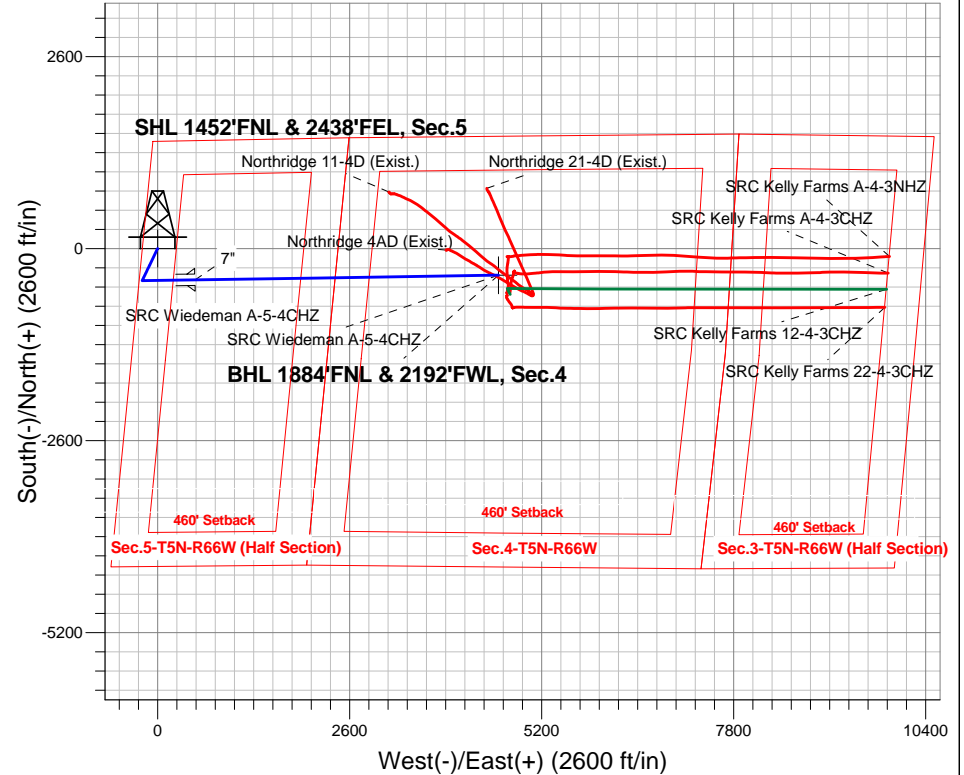
Azimuths to True North  
Magnetic North: 8.48°

Magnetic Field  
Strength: 52825.9snT  
Dip Angle: 66.97°  
Date: 6/26/2014  
Model: IGRF2010

SRC Wiedeman Pad Sec.5-T5N-R66W  
SRC Wiedeman A-5-4CHZ  
Plan #1 (6-24-14)  
5:32, June 26 2014

## ANNOTATIONS

TVD	MD	Annotation
1200.0	1200.0	KOP #1
6506.8	6530.5	KOP #2
7223.0	7655.5	End of Build





## **Synergy Resources**

**Sec.5-T5N-R66W**

**SRC Wiedeman Pad Sec.5-T5N-R66W**

**SRC Wiedeman A-5-4CHZ**

**Wellbore #1**

**Plan: Plan #1 (6-24-14)**

## **Standard Planning Report**

**26 June, 2014**



<b>Database:</b>	Landmark	<b>Local Co-ordinate Reference:</b>	Well SRC Wiedeman A-5-4CHZ
<b>Company:</b>	Synergy Resources	<b>TVD Reference:</b>	WELL @ 4796.0ft (RKB - 13')
<b>Project:</b>	Sec.5-T5N-R66W	<b>MD Reference:</b>	WELL @ 4796.0ft (RKB - 13')
<b>Site:</b>	SRC Wiedeman Pad Sec.5-T5N-R66W	<b>North Reference:</b>	True
<b>Well:</b>	SRC Wiedeman A-5-4CHZ	<b>Survey Calculation Method:</b>	Minimum Curvature
<b>Wellbore:</b>	Wellbore #1		
<b>Design:</b>	Plan #1 (6-24-14)		

<b>Project</b>	Sec.5-T5N-R66W		
<b>Map System:</b>	US State Plane 1983	<b>System Datum:</b>	Mean Sea Level
<b>Geo Datum:</b>	North American Datum 1983		Using Well Reference Point
<b>Map Zone:</b>	Colorado Northern Zone		Using geodetic scale factor

Site						SRC Wiedeman Pad Sec.5-T5N-R66W											
<b>Site Position:</b>						<b>Northing:</b>			1,401,391.96 ft			<b>Latitude:</b>			40.433123		
<b>From:</b>			Lat/Long			<b>Easting:</b>			3,194,327.74 ft			<b>Longitude:</b>			-104.801912		
<b>Position Uncertainty:</b>			0.0 ft			<b>Slot Radius:</b>			"			<b>Grid Convergence:</b>			0.45 °		

Well	SRC Wiedeman A-5-4CHZ					
Well Position	+N/-S	25.1 ft	Northing:	1,401,417.49 ft	Latitude:	40.433192
	+E/-W	50.4 ft	Easting:	3,194,377.92 ft	Longitude:	-104.801731
Position Uncertainty		0.0 ft	Wellhead Elevation:	ft	Ground Level:	4,783.0 ft

<b>Wellbore</b>	Wellbore #1				
<b>Magnetics</b>	<b>Model Name</b>	<b>Sample Date</b>	<b>Declination (°)</b>	<b>Dip Angle (°)</b>	<b>Field Strength (nT)</b>
	IGRF2010	6/26/2014	8.48	66.97	52,826

<b>Design</b>	Plan #1 (6-24-14)			
<b>Audit Notes:</b>				
<b>Version:</b>	<b>Phase:</b>	PROTOTYPE	<b>Tie On Depth:</b>	0.0
<b>Vertical Section:</b>	<b>Depth From (TVD) (ft)</b>	<b>+N/-S (ft)</b>	<b>+E/-W (ft)</b>	<b>Direction (°)</b>
	0.0	0.0	0.0	94.49

<b>Plan Sections</b>										
Measured Depth (ft)	Inclination (°)	Azimuth (°)	Vertical Depth (ft)	+N/-S (ft)	+E/-W (ft)	Dogleg Rate (°/100ft)	Build Rate (°/100ft)	Turn Rate (°/100ft)	TFO (°)	Target
0.0	0.00	0.00	0.0	0.0	0.0	0.00	0.00	0.00	0.00	
1,200.0	0.00	0.00	1,200.0	0.0	0.0	0.00	0.00	0.00	0.00	
1,486.6	5.73	205.60	1,486.1	-12.9	-6.2	2.00	2.00	0.00	205.60	
6,037.1	5.73	205.60	6,013.9	-422.8	-202.6	0.00	0.00	0.00	0.00	
6,323.7	0.00	0.00	6,300.0	-435.7	-208.8	2.00	-2.00	0.00	180.00	
6,530.5	0.00	0.00	6,506.8	-435.7	-208.8	0.00	0.00	0.00	0.00	
7,655.5	90.00	89.13	7,223.0	-424.9	507.3	8.00	8.00	0.00	89.13	
11,764.6	90.00	89.13	7,223.0	-362.8	4,616.0	0.00	0.00	0.00	0.00	BHL 1884'FNL & 21

<b>Database:</b>	Landmark	<b>Local Co-ordinate Reference:</b>	Well SRC Wiedeman A-5-4CHZ
<b>Company:</b>	Synergy Resources	<b>TVD Reference:</b>	WELL @ 4796.0ft (RKB - 13')
<b>Project:</b>	Sec.5-T5N-R66W	<b>MD Reference:</b>	WELL @ 4796.0ft (RKB - 13')
<b>Site:</b>	SRC Wiedeman Pad Sec.5-T5N-R66W	<b>North Reference:</b>	True
<b>Well:</b>	SRC Wiedeman A-5-4CHZ	<b>Survey Calculation Method:</b>	Minimum Curvature
<b>Wellbore:</b>	Wellbore #1		
<b>Design:</b>	Plan #1 (6-24-14)		

Planned Survey									
Measured Depth (ft)	Inclination (°)	Azimuth (°)	Vertical Depth (ft)	+N/-S (ft)	+E/-W (ft)	Vertical Section (ft)	Dogleg Rate (°/100ft)	Build Rate (°/100ft)	Turn Rate (°/100ft)
0.0	0.00	0.00	0.0	0.0	0.0	0.0	0.00	0.00	0.00
1.0	0.00	0.00	1.0	0.0	0.0	0.0	0.00	0.00	0.00
<b>SHL 1452'FNL &amp; 2438'FEL, Sec.5</b>									
100.0	0.00	0.00	100.0	0.0	0.0	0.0	0.00	0.00	0.00
200.0	0.00	0.00	200.0	0.0	0.0	0.0	0.00	0.00	0.00
300.0	0.00	0.00	300.0	0.0	0.0	0.0	0.00	0.00	0.00
400.0	0.00	0.00	400.0	0.0	0.0	0.0	0.00	0.00	0.00
500.0	0.00	0.00	500.0	0.0	0.0	0.0	0.00	0.00	0.00
600.0	0.00	0.00	600.0	0.0	0.0	0.0	0.00	0.00	0.00
700.0	0.00	0.00	700.0	0.0	0.0	0.0	0.00	0.00	0.00
800.0	0.00	0.00	800.0	0.0	0.0	0.0	0.00	0.00	0.00
900.0	0.00	0.00	900.0	0.0	0.0	0.0	0.00	0.00	0.00
1,000.0	0.00	0.00	1,000.0	0.0	0.0	0.0	0.00	0.00	0.00
1,100.0	0.00	0.00	1,100.0	0.0	0.0	0.0	0.00	0.00	0.00
1,200.0	0.00	0.00	1,200.0	0.0	0.0	0.0	0.00	0.00	0.00
<b>KOP #1</b>									
1,300.0	2.00	205.60	1,300.0	-1.6	-0.8	-0.6	2.00	2.00	0.00
1,400.0	4.00	205.60	1,399.8	-6.3	-3.0	-2.5	2.00	2.00	0.00
1,486.6	5.73	205.60	1,486.1	-12.9	-6.2	-5.2	2.00	2.00	0.00
1,500.0	5.73	205.60	1,499.5	-14.1	-6.8	-5.6	0.00	0.00	0.00
1,600.0	5.73	205.60	1,599.0	-23.1	-11.1	-9.2	0.00	0.00	0.00
1,700.0	5.73	205.60	1,698.5	-32.1	-15.4	-12.8	0.00	0.00	0.00
1,800.0	5.73	205.60	1,798.0	-41.1	-19.7	-16.4	0.00	0.00	0.00
1,900.0	5.73	205.60	1,897.5	-50.2	-24.0	-20.0	0.00	0.00	0.00
2,000.0	5.73	205.60	1,997.0	-59.2	-28.3	-23.6	0.00	0.00	0.00
2,100.0	5.73	205.60	2,096.5	-68.2	-32.7	-27.2	0.00	0.00	0.00
2,200.0	5.73	205.60	2,196.0	-77.2	-37.0	-30.8	0.00	0.00	0.00
2,300.0	5.73	205.60	2,295.5	-86.2	-41.3	-34.4	0.00	0.00	0.00
2,400.0	5.73	205.60	2,395.0	-95.2	-45.6	-38.0	0.00	0.00	0.00
2,500.0	5.73	205.60	2,494.5	-104.2	-49.9	-41.6	0.00	0.00	0.00
2,600.0	5.73	205.60	2,594.0	-113.2	-54.2	-45.2	0.00	0.00	0.00
2,700.0	5.73	205.60	2,693.5	-122.2	-58.6	-48.8	0.00	0.00	0.00
2,800.0	5.73	205.60	2,793.0	-131.2	-62.9	-52.4	0.00	0.00	0.00
2,900.0	5.73	205.60	2,892.5	-140.2	-67.2	-56.0	0.00	0.00	0.00
3,000.0	5.73	205.60	2,992.0	-149.2	-71.5	-59.6	0.00	0.00	0.00
3,100.0	5.73	205.60	3,091.5	-158.2	-75.8	-63.2	0.00	0.00	0.00
3,200.0	5.73	205.60	3,191.0	-167.3	-80.1	-66.8	0.00	0.00	0.00
3,300.0	5.73	205.60	3,290.5	-176.3	-84.5	-70.4	0.00	0.00	0.00
3,400.0	5.73	205.60	3,390.0	-185.3	-88.8	-74.0	0.00	0.00	0.00
3,500.0	5.73	205.60	3,489.5	-194.3	-93.1	-77.6	0.00	0.00	0.00
3,600.0	5.73	205.60	3,589.0	-203.3	-97.4	-81.2	0.00	0.00	0.00
3,700.0	5.73	205.60	3,688.5	-212.3	-101.7	-84.8	0.00	0.00	0.00
3,800.0	5.73	205.60	3,788.0	-221.3	-106.0	-88.4	0.00	0.00	0.00
3,900.0	5.73	205.60	3,887.5	-230.3	-110.4	-92.0	0.00	0.00	0.00
4,000.0	5.73	205.60	3,987.0	-239.3	-114.7	-95.6	0.00	0.00	0.00
4,100.0	5.73	205.60	4,086.5	-248.3	-119.0	-99.2	0.00	0.00	0.00
4,200.0	5.73	205.60	4,186.0	-257.3	-123.3	-102.8	0.00	0.00	0.00
4,300.0	5.73	205.60	4,285.5	-266.3	-127.6	-106.4	0.00	0.00	0.00
4,400.0	5.73	205.60	4,385.0	-275.3	-131.9	-110.0	0.00	0.00	0.00
4,500.0	5.73	205.60	4,484.5	-284.4	-136.3	-113.6	0.00	0.00	0.00
4,600.0	5.73	205.60	4,584.0	-293.4	-140.6	-117.2	0.00	0.00	0.00
4,700.0	5.73	205.60	4,683.5	-302.4	-144.9	-120.7	0.00	0.00	0.00
4,800.0	5.73	205.60	4,783.0	-311.4	-149.2	-124.3	0.00	0.00	0.00
4,900.0	5.73	205.60	4,882.5	-320.4	-153.5	-127.9	0.00	0.00	0.00

<b>Database:</b>	Landmark	<b>Local Co-ordinate Reference:</b>	Well SRC Wiedeman A-5-4CHZ
<b>Company:</b>	Synergy Resources	<b>TVD Reference:</b>	WELL @ 4796.0ft (RKB - 13')
<b>Project:</b>	Sec.5-T5N-R66W	<b>MD Reference:</b>	WELL @ 4796.0ft (RKB - 13')
<b>Site:</b>	SRC Wiedeman Pad Sec.5-T5N-R66W	<b>North Reference:</b>	True
<b>Well:</b>	SRC Wiedeman A-5-4CHZ	<b>Survey Calculation Method:</b>	Minimum Curvature
<b>Wellbore:</b>	Wellbore #1		
<b>Design:</b>	Plan #1 (6-24-14)		

Planned Survey									
Measured Depth (ft)	Inclination (°)	Azimuth (°)	Vertical Depth (ft)	+N/-S (ft)	+E/-W (ft)	Vertical Section (ft)	Dogleg Rate (°/100ft)	Build Rate (°/100ft)	Turn Rate (°/100ft)
5,000.0	5.73	205.60	4,982.0	-329.4	-157.8	-131.5	0.00	0.00	0.00
5,100.0	5.73	205.60	5,081.5	-338.4	-162.2	-135.1	0.00	0.00	0.00
5,200.0	5.73	205.60	5,181.0	-347.4	-166.5	-138.7	0.00	0.00	0.00
5,300.0	5.73	205.60	5,280.5	-356.4	-170.8	-142.3	0.00	0.00	0.00
5,400.0	5.73	205.60	5,380.0	-365.4	-175.1	-145.9	0.00	0.00	0.00
5,500.0	5.73	205.60	5,479.5	-374.4	-179.4	-149.5	0.00	0.00	0.00
5,600.0	5.73	205.60	5,579.0	-383.4	-183.7	-153.1	0.00	0.00	0.00
5,700.0	5.73	205.60	5,678.5	-392.4	-188.0	-156.7	0.00	0.00	0.00
5,800.0	5.73	205.60	5,778.0	-401.5	-192.4	-160.3	0.00	0.00	0.00
5,900.0	5.73	205.60	5,877.5	-410.5	-196.7	-163.9	0.00	0.00	0.00
6,000.0	5.73	205.60	5,977.0	-419.5	-201.0	-167.5	0.00	0.00	0.00
6,037.1	5.73	205.60	6,013.9	-422.8	-202.6	-168.8	0.00	0.00	0.00
6,100.0	4.47	205.60	6,076.5	-427.9	-205.0	-170.9	2.00	-2.00	0.00
6,200.0	2.47	205.60	6,176.3	-433.3	-207.6	-173.0	2.00	-2.00	0.00
6,300.0	0.47	205.60	6,276.3	-435.6	-208.7	-174.0	2.00	-2.00	0.00
6,323.7	0.00	0.00	6,300.0	-435.7	-208.8	-174.0	2.00	-2.00	0.00
6,400.0	0.00	0.00	6,376.3	-435.7	-208.8	-174.0	0.00	0.00	0.00
6,500.0	0.00	0.00	6,476.3	-435.7	-208.8	-174.0	0.00	0.00	0.00
6,530.5	0.00	0.00	6,506.8	-435.7	-208.8	-174.0	0.00	0.00	0.00
<b>KOP #2</b>									
6,600.0	5.56	89.13	6,576.2	-435.7	-205.4	-170.7	8.00	8.00	0.00
6,700.0	13.56	89.13	6,674.7	-435.4	-188.8	-154.1	8.00	8.00	0.00
6,800.0	21.56	89.13	6,770.0	-435.0	-158.7	-124.1	8.00	8.00	0.00
6,900.0	29.56	89.13	6,860.1	-434.3	-115.6	-81.2	8.00	8.00	0.00
7,000.0	37.56	89.13	6,943.4	-433.5	-60.4	-26.2	8.00	8.00	0.00
7,100.0	45.56	89.13	7,018.1	-432.5	5.9	39.8	8.00	8.00	0.00
7,200.0	53.56	89.13	7,083.0	-431.3	82.0	115.5	8.00	8.00	0.00
7,300.0	61.56	89.13	7,136.6	-430.1	166.3	199.5	8.00	8.00	0.00
7,400.0	69.56	89.13	7,177.9	-428.7	257.2	290.0	8.00	8.00	0.00
7,500.0	77.56	89.13	7,206.2	-427.2	353.1	385.4	8.00	8.00	0.00
7,600.0	85.56	89.13	7,220.8	-425.7	451.9	483.8	8.00	8.00	0.00
7,655.5	90.00	89.13	7,223.0	-424.9	507.3	539.0	8.00	8.00	0.00
<b>End of Build - 7"</b>									
7,700.0	90.00	89.13	7,223.0	-424.2	551.8	583.4	0.00	0.00	0.00
7,800.0	90.00	89.13	7,223.0	-422.7	651.8	682.9	0.00	0.00	0.00
7,900.0	90.00	89.13	7,223.0	-421.2	751.8	782.5	0.00	0.00	0.00
8,000.0	90.00	89.13	7,223.0	-419.7	851.8	882.0	0.00	0.00	0.00
8,100.0	90.00	89.13	7,223.0	-418.2	951.8	981.6	0.00	0.00	0.00
8,200.0	90.00	89.13	7,223.0	-416.7	1,051.8	1,081.2	0.00	0.00	0.00
8,300.0	90.00	89.13	7,223.0	-415.2	1,151.7	1,180.7	0.00	0.00	0.00
8,400.0	90.00	89.13	7,223.0	-413.6	1,251.7	1,280.3	0.00	0.00	0.00
8,500.0	90.00	89.13	7,223.0	-412.1	1,351.7	1,379.9	0.00	0.00	0.00
8,600.0	90.00	89.13	7,223.0	-410.6	1,451.7	1,479.4	0.00	0.00	0.00
8,700.0	90.00	89.13	7,223.0	-409.1	1,551.7	1,579.0	0.00	0.00	0.00
8,800.0	90.00	89.13	7,223.0	-407.6	1,651.7	1,678.5	0.00	0.00	0.00
8,900.0	90.00	89.13	7,223.0	-406.1	1,751.7	1,778.1	0.00	0.00	0.00
9,000.0	90.00	89.13	7,223.0	-404.6	1,851.7	1,877.7	0.00	0.00	0.00
9,100.0	90.00	89.13	7,223.0	-403.1	1,951.6	1,977.2	0.00	0.00	0.00
9,200.0	90.00	89.13	7,223.0	-401.6	2,051.6	2,076.8	0.00	0.00	0.00
9,300.0	90.00	89.13	7,223.0	-400.0	2,151.6	2,176.4	0.00	0.00	0.00
9,400.0	90.00	89.13	7,223.0	-398.5	2,251.6	2,275.9	0.00	0.00	0.00
9,500.0	90.00	89.13	7,223.0	-397.0	2,351.6	2,375.5	0.00	0.00	0.00
9,600.0	90.00	89.13	7,223.0	-395.5	2,451.6	2,475.0	0.00	0.00	0.00
9,700.0	90.00	89.13	7,223.0	-394.0	2,551.6	2,574.6	0.00	0.00	0.00

**Database:** Landmark  
**Company:** Synergy Resources  
**Project:** Sec.5-T5N-R66W  
**Site:** SRC Wiedeman Pad Sec.5-T5N-R66W  
**Well:** SRC Wiedeman A-5-4CHZ  
**Wellbore:** Wellbore #1  
**Design:** Plan #1 (6-24-14)

**Local Co-ordinate Reference:** Well SRC Wiedeman A-5-4CHZ  
**TVD Reference:** WELL @ 4796.0ft (RKB - 13')  
**MD Reference:** WELL @ 4796.0ft (RKB - 13')  
**North Reference:** True  
**Survey Calculation Method:** Minimum Curvature

**Planned Survey**

Measured Depth (ft)	Inclination (°)	Azimuth (°)	Vertical Depth (ft)	+N/-S (ft)	+E/-W (ft)	Vertical Section (ft)	Dogleg Rate (°/100ft)	Build Rate (°/100ft)	Turn Rate (°/100ft)
9,800.0	90.00	89.13	7,223.0	-392.5	2,651.6	2,674.2	0.00	0.00	0.00
9,900.0	90.00	89.13	7,223.0	-391.0	2,751.6	2,773.7	0.00	0.00	0.00
10,000.0	90.00	89.13	7,223.0	-389.5	2,851.5	2,873.3	0.00	0.00	0.00
10,100.0	90.00	89.13	7,223.0	-387.9	2,951.5	2,972.9	0.00	0.00	0.00
10,200.0	90.00	89.13	7,223.0	-386.4	3,051.5	3,072.4	0.00	0.00	0.00
10,300.0	90.00	89.13	7,223.0	-384.9	3,151.5	3,172.0	0.00	0.00	0.00
10,400.0	90.00	89.13	7,223.0	-383.4	3,251.5	3,271.5	0.00	0.00	0.00
10,500.0	90.00	89.13	7,223.0	-381.9	3,351.5	3,371.1	0.00	0.00	0.00
10,600.0	90.00	89.13	7,223.0	-380.4	3,451.5	3,470.7	0.00	0.00	0.00
10,700.0	90.00	89.13	7,223.0	-378.9	3,551.5	3,570.2	0.00	0.00	0.00
10,800.0	90.00	89.13	7,223.0	-377.4	3,651.5	3,669.8	0.00	0.00	0.00
10,900.0	90.00	89.13	7,223.0	-375.9	3,751.4	3,769.4	0.00	0.00	0.00
11,000.0	90.00	89.13	7,223.0	-374.3	3,851.4	3,868.9	0.00	0.00	0.00
11,100.0	90.00	89.13	7,223.0	-372.8	3,951.4	3,968.5	0.00	0.00	0.00
11,200.0	90.00	89.13	7,223.0	-371.3	4,051.4	4,068.0	0.00	0.00	0.00
11,300.0	90.00	89.13	7,223.0	-369.8	4,151.4	4,167.6	0.00	0.00	0.00
11,400.0	90.00	89.13	7,223.0	-368.3	4,251.4	4,267.2	0.00	0.00	0.00
11,500.0	90.00	89.13	7,223.0	-366.8	4,351.4	4,366.7	0.00	0.00	0.00
11,600.0	90.00	89.13	7,223.0	-365.3	4,451.4	4,466.3	0.00	0.00	0.00
11,700.0	90.00	89.13	7,223.0	-363.8	4,551.4	4,565.9	0.00	0.00	0.00
11,764.6	90.00	89.13	7,223.0	-362.8	4,616.0	4,630.2	0.00	0.00	0.00

**BHL 1884'FNL & 2192'FWL, Sec.4**
**Targets**

Target Name - hit/miss target - Shape	Dip Angle (°)	Dip Dir. (°)	TVD (ft)	+N/-S (ft)	+E/-W (ft)	Northing (ft)	Easting (ft)	Latitude	Longitude
SHL 1452'FNL & 2438'FWL - plan hits target center - Point	0.00	0.00	1.0	0.0	0.0	1,401,417.50	3,194,377.92	40.433192	-104.801731
BHL 1884'FNL & 2192'FWL - plan hits target center - Point	0.00	0.00	7,223.0	-362.8	4,616.0	1,401,091.08	3,198,996.42	40.432195	-104.785150

**Casing Points**

Measured Depth (ft)	Vertical Depth (ft)	Name	Casing Diameter (")	Hole Diameter (")
7,655.5	7,223.0	7"	7	7-1/2

**Plan Annotations**

Measured Depth (ft)	Vertical Depth (ft)	Local Coordinates +N/-S (ft)	+E/-W (ft)	Comment
1,200.0	1,200.0	0.0	0.0	KOP #1
6,530.5	6,506.8	-435.7	-208.8	KOP #2
7,655.5	7,223.0	-424.9	507.3	End of Build

## **Synergy Resources**

**Sec.5-T5N-R66W**

**SRC Wiedeman Pad Sec.5-T5N-R66W**

**SRC Wiedeman A-5-4CHZ**

**Wellbore #1**

**Plan #1 (6-24-14)**

## **Anticollision Report**

**26 June, 2014**

<b>Company:</b>	Synergy Resources	<b>Local Co-ordinate Reference:</b>	Well SRC Wiedeman A-5-4CHZ
<b>Project:</b>	Sec.5-T5N-R66W	<b>TVD Reference:</b>	WELL @ 4796.0ft (RKB - 13')
<b>Reference Site:</b>	SRC Wiedeman Pad Sec.5-T5N-R66W	<b>MD Reference:</b>	WELL @ 4796.0ft (RKB - 13')
<b>Site Error:</b>	0.0ft	<b>North Reference:</b>	True
<b>Reference Well:</b>	SRC Wiedeman A-5-4CHZ	<b>Survey Calculation Method:</b>	Minimum Curvature
<b>Well Error:</b>	0.0ft	<b>Output errors are at</b>	2.00 sigma
<b>Reference Wellbore</b>	Wellbore #1	<b>Database:</b>	Landmark
<b>Reference Design:</b>	Plan #1 (6-24-14)	<b>Offset TVD Reference:</b>	Offset Datum

<b>Reference</b>	Plan #1 (6-24-14)		
<b>Filter type:</b>	NO GLOBAL FILTER: Using user defined selection & filtering criteria		
<b>Interpolation Method:</b>	Stations	<b>Error Model:</b>	ISCWSA
<b>Depth Range:</b>	Unlimited	<b>Scan Method:</b>	Closest Approach 3D
<b>Results Limited by:</b>	Maximum center-center distance of 1,000.0ft	<b>Error Surface:</b>	Elliptical Conic
<b>Warning Levels Evaluated at:</b>	2.00 Sigma		

<b>Survey Tool Program</b>	<b>Date</b> 6/26/2014			
<b>From (ft)</b>	<b>To (ft)</b>	<b>Survey (Wellbore)</b>	<b>Tool Name</b>	<b>Description</b>
0.0	11,764.6	Plan #1 (6-24-14) (Wellbore #1)	MWD	MWD - Standard

Summary						
Site Name	Reference Measured Depth (ft)	Offset Measured Depth (ft)	Distance Between Centres (ft)	Distance Between Ellipses (ft)	Separation Factor	Warning
Northridge Pad Sec.4-T5N-R66W						
Northridge 11-4D (Exist.) - Wellbore #1 - Wellbore #1						Out of range
Northridge 12-4D (Exist.) - Wellbore #1 - Wellbore #1	10,407.9	7,487.8	177.6	45.9	1.348	Level 3, CC, ES, SF
Northridge 21-4D (Exist.) - Wellbore #1 - Wellbore #1						Out of range
Northridge 22-4D (Exist.) - Wellbore #1 - Wellbore #1	11,604.4	7,236.9	396.3	250.7	2.722	CC, ES, SF
Northridge 4AD (Exist.) - Wellbore #1 - Wellbore #1	11,061.4	7,366.2	352.1	213.4	2.539	CC, ES
Northridge 4AD (Exist.) - Wellbore #1 - Wellbore #1	11,100.0	7,365.7	354.2	214.5	2.535	SF
Northridge 4KD (Exist.) - Wellbore #1 - Wellbore #1	10,855.0	7,411.1	991.6	845.7	6.797	CC
Northridge 4KD (Exist.) - Wellbore #1 - Wellbore #1	10,900.0	7,411.4	992.6	845.5	6.747	ES, SF
SRC Kelly Farms Pad Sec.4-T5N-R66W						
SRC Kelly Farms 12-4-3CHZ - Wellbore #1 - Plan #3 (6-	11,764.6	6,990.4	427.2	332.1	4.491	CC, ES, SF
SRC Kelly Farms 22-4-3CHZ - Wellbore #1 - Wellbore #1	11,764.6	6,972.0	609.3	480.8	4.742	CC, ES, SF
SRC Kelly Farms A-4-3CHZ - Wellbore #1 - Wellbore #1	11,764.6	6,975.0	435.7	392.2	10.024	CC, ES, SF
SRC Kelly Farms A-4-3NHZ - Wellbore #1 - Wellbore #1	11,764.6	6,883.0	614.0	525.2	6.910	CC, ES, SF
SRC Wiedeman Pad Sec.5-T5N-R66W						
SRC Wiedeman 22-5-4CHZ - Wellbore #1 - Plan #1 (6-2	800.0	800.0	30.0	26.6	8.899	CC, ES
SRC Wiedeman 22-5-4CHZ - Wellbore #1 - Plan #1 (6-2	11,764.6	11,824.1	448.3	185.5	1.706	SF
SRC Wiedeman 22-5-4NHZ - Wellbore #1 - Plan #1 (6-2	1,000.0	1,000.0	15.0	10.7	3.513	CC, ES
SRC Wiedeman 22-5-4NHZ - Wellbore #1 - Plan #1 (6-2	11,764.6	11,621.6	278.7	65.2	1.305	Level 3, SF
SRC Wiedeman A-5-3CHZ - Wellbore #1 - Plan #1 (6-24	1,200.0	1,200.0	30.0	24.9	5.809	CC, ES
SRC Wiedeman A-5-3CHZ - Wellbore #1 - Plan #1 (6-24	11,764.6	11,689.8	536.4	274.1	2.045	SF
SRC Wiedeman A-5-4NHZ - Wellbore #1 - Plan #1 (6-24	1,200.0	1,200.0	15.0	9.8	2.902	CC, ES
SRC Wiedeman A-5-4NHZ - Wellbore #1 - Plan #1 (6-24	11,764.6	11,560.1	278.1	66.4	1.313	Level 3, SF

<b>Offset Design</b>	Northridge Pad Sec.4-T5N-R66W - Northridge 12-4D (Exist.) - Wellbore #1 - Wellbore #1											<b>Offset Site Error:</b>	0.0 ft
<b>Survey Program:</b>	182-MWD											<b>Offset Well Error:</b>	0.0 ft
Reference	Offset	Semi Major Axis		Distance									
Measured Depth (ft)	Vertical Depth (ft)	Measured Depth (ft)	Vertical Depth (ft)	Reference (ft)	Offset (ft)	Highside Toolface (°)	Offset Wellbore Centre +N/-S (ft)	Offset Wellbore Centre +E/-W (ft)	Between Centres (ft)	Between Ellipses (ft)	Minimum Separation (ft)	Separation Factor	Warning
9,500.0	7,223.0	7,494.7	7,187.0	69.0	38.0	91.95	-560.9	3,262.1	925.1	818.4	106.75	8.666	
9,600.0	7,223.0	7,493.8	7,186.2	71.8	38.0	91.68	-560.9	3,262.1	827.2	717.7	109.50	7.555	
9,700.0	7,223.0	7,493.0	7,185.4	74.5	38.0	91.42	-560.9	3,262.1	729.9	617.6	112.25	6.502	
9,800.0	7,223.0	7,492.2	7,184.6	77.2	38.0	91.16	-560.9	3,262.1	633.3	518.3	115.00	5.507	
9,900.0	7,223.0	7,491.5	7,183.8	80.0	38.0	90.92	-560.9	3,262.1	538.1	420.3	117.76	4.569	

CC - Min centre to center distance or convergent point, SF - min separation factor, ES - min ellipse separation



<b>Company:</b>	Synergy Resources	<b>Local Co-ordinate Reference:</b>	Well SRC Wiedeman A-5-4CHZ
<b>Project:</b>	Sec.5-T5N-R66W	<b>TVD Reference:</b>	WELL @ 4796.0ft (RKB - 13')
<b>Reference Site:</b>	SRC Wiedeman Pad Sec.5-T5N-R66W	<b>MD Reference:</b>	WELL @ 4796.0ft (RKB - 13')
<b>Site Error:</b>	0.0ft	<b>North Reference:</b>	True
<b>Reference Well:</b>	SRC Wiedeman A-5-4CHZ	<b>Survey Calculation Method:</b>	Minimum Curvature
<b>Well Error:</b>	0.0ft	<b>Output errors are at</b>	2.00 sigma
<b>Reference Wellbore</b>	Wellbore #1	<b>Database:</b>	Landmark
<b>Reference Design:</b>	Plan #1 (6-24-14)	<b>Offset TVD Reference:</b>	Offset Datum

<b>Offset Design</b> Northridge Pad Sec.4-T5N-R66W - Northridge 12-4D (Exist.) - Wellbore #1 - Wellbore #1												<b>Offset Site Error:</b>	0.0 ft
Survey Program: 182-MWD												<b>Offset Well Error:</b>	0.0 ft
Reference	Offset	Semi Major Axis		Distance									
Measured Depth (ft)	Vertical Depth (ft)	Measured Depth (ft)	Vertical Depth (ft)	Reference (ft)	Offset (ft)	Highside Toolface (°)	Offset Wellbore Centre +N/-S (ft)	+E/-W (ft)	Between Centres (ft)	Between Ellipses (ft)	Minimum Separation (ft)	Separation Factor	Warning
10,000.0	7,223.0	7,490.7	7,183.1	82.7	38.0	90.67	-560.9	3,262.1	444.9	324.4	120.52	3.692	
10,100.0	7,223.0	7,490.0	7,182.3	85.5	38.0	90.44	-560.9	3,262.1	355.5	232.2	123.28	2.884	
10,200.0	7,223.0	7,489.3	7,181.6	88.2	38.0	90.20	-560.9	3,262.1	273.5	147.4	126.04	2.170	
10,300.0	7,223.0	7,488.6	7,180.9	91.0	38.0	89.98	-560.9	3,262.1	207.8	79.1	128.80	1.614	
10,400.0	7,223.0	7,487.9	7,180.2	93.7	38.0	89.76	-560.9	3,262.1	177.8	46.2	131.56	1.352	Level 3
10,407.9	7,223.0	7,487.8	7,180.2	94.0	38.0	89.74	-560.9	3,262.1	177.6	45.9	131.78	1.348	Level 3, CC, ES, SF
10,500.0	7,223.0	7,487.2	7,179.6	96.5	38.0	89.54	-560.9	3,262.1	200.1	65.8	134.33	1.489	Level 3
10,600.0	7,223.0	7,486.5	7,178.9	99.3	38.0	89.33	-560.9	3,262.1	261.6	124.5	137.09	1.908	
10,700.0	7,223.0	7,485.9	7,178.3	102.0	38.0	89.12	-560.9	3,262.1	341.8	202.0	139.85	2.444	
10,800.0	7,223.0	7,485.3	7,177.6	104.8	38.0	88.92	-560.9	3,262.1	430.4	287.8	142.62	3.018	
10,900.0	7,223.0	7,484.7	7,177.0	107.6	38.0	88.72	-560.9	3,262.1	523.1	377.8	145.38	3.598	
11,000.0	7,223.0	7,484.1	7,176.4	110.4	38.0	88.52	-560.9	3,262.1	618.1	470.0	148.15	4.172	
11,100.0	7,223.0	7,483.5	7,175.8	113.1	38.0	88.33	-560.9	3,262.1	714.5	563.6	150.91	4.735	
11,200.0	7,223.0	7,482.9	7,175.3	115.9	38.0	88.15	-560.9	3,262.1	811.7	658.1	153.67	5.282	
11,300.0	7,223.0	7,482.3	7,174.7	118.7	38.0	87.97	-560.9	3,262.1	909.6	753.1	156.43	5.814	

<b>Company:</b>	Synergy Resources	<b>Local Co-ordinate Reference:</b>	Well SRC Wiedeman A-5-4CHZ
<b>Project:</b>	Sec.5-T5N-R66W	<b>TVD Reference:</b>	WELL @ 4796.0ft (RKB - 13')
<b>Reference Site:</b>	SRC Wiedeman Pad Sec.5-T5N-R66W	<b>MD Reference:</b>	WELL @ 4796.0ft (RKB - 13')
<b>Site Error:</b>	0.0ft	<b>North Reference:</b>	True
<b>Reference Well:</b>	SRC Wiedeman A-5-4CHZ	<b>Survey Calculation Method:</b>	Minimum Curvature
<b>Well Error:</b>	0.0ft	<b>Output errors are at</b>	2.00 sigma
<b>Reference Wellbore</b>	Wellbore #1	<b>Database:</b>	Landmark
<b>Reference Design:</b>	Plan #1 (6-24-14)	<b>Offset TVD Reference:</b>	Offset Datum

<b>Offset Design</b> Northridge Pad Sec.4-T5N-R66W - Northridge 22-4D (Exist.) - Wellbore #1 - Wellbore #1												<b>Offset Site Error:</b>	0.0 ft
Survey Program: 182-MWD												<b>Offset Well Error:</b>	0.0 ft
Reference	Offset	Semi Major Axis		Distance									
Measured Depth (ft)	Vertical Depth (ft)	Measured Depth (ft)	Vertical Depth (ft)	Reference (ft)	Offset (ft)	Highside Toolface (°)	Offset Wellbore Centre +N/-S (ft)	+E/-W (ft)	Between Centres (ft)	Between Ellipses (ft)	Minimum Separation (ft)	Separation Factor	Warning
10,700.0	7,223.0	7,262.0	7,193.7	102.0	18.7	91.83	-762.1	4,461.0	987.1	866.6	120.49	8.192	
10,800.0	7,223.0	7,259.2	7,190.9	104.8	18.7	91.43	-762.0	4,461.1	896.4	773.1	123.28	7.271	
10,900.0	7,223.0	7,256.4	7,188.1	107.6	18.7	91.03	-761.9	4,461.2	808.0	681.9	126.07	6.409	
11,000.0	7,223.0	7,253.6	7,185.3	110.4	18.7	90.62	-761.8	4,461.3	722.5	593.7	128.86	5.607	
11,100.0	7,223.0	7,250.9	7,182.6	113.1	18.7	90.22	-761.7	4,461.3	641.3	509.7	131.64	4.872	
11,200.0	7,223.0	7,248.1	7,179.8	115.9	18.6	89.83	-761.6	4,461.4	566.1	431.7	134.42	4.211	
11,300.0	7,223.0	7,245.3	7,177.0	118.7	18.6	89.43	-761.6	4,461.5	499.6	362.4	137.19	3.642	
11,400.0	7,223.0	7,242.6	7,174.3	121.5	18.6	89.03	-761.5	4,461.6	445.9	305.9	139.96	3.186	
11,500.0	7,223.0	7,239.8	7,171.5	124.2	18.6	88.63	-761.4	4,461.6	409.8	267.1	142.72	2.872	
11,600.0	7,223.0	7,237.1	7,168.8	127.0	18.6	88.23	-761.3	4,461.7	396.3	250.9	145.48	2.724	
11,604.4	7,223.0	7,236.9	7,168.6	127.1	18.6	88.21	-761.3	4,461.7	396.3	250.7	145.60	2.722 CC, ES, SF	
11,700.0	7,223.0	7,234.3	7,166.0	129.8	18.6	87.83	-761.2	4,461.8	407.7	259.5	148.23	2.750	
11,764.6	7,223.0	7,232.5	7,164.2	131.6	18.6	87.57	-761.1	4,461.8	427.5	277.5	150.00	2.850	

<b>Company:</b>	Synergy Resources	<b>Local Co-ordinate Reference:</b>	Well SRC Wiedeman A-5-4CHZ
<b>Project:</b>	Sec.5-T5N-R66W	<b>TVD Reference:</b>	WELL @ 4796.0ft (RKB - 13')
<b>Reference Site:</b>	SRC Wiedeman Pad Sec.5-T5N-R66W	<b>MD Reference:</b>	WELL @ 4796.0ft (RKB - 13')
<b>Site Error:</b>	0.0ft	<b>North Reference:</b>	True
<b>Reference Well:</b>	SRC Wiedeman A-5-4CHZ	<b>Survey Calculation Method:</b>	Minimum Curvature
<b>Well Error:</b>	0.0ft	<b>Output errors are at</b>	2.00 sigma
<b>Reference Wellbore</b>	Wellbore #1	<b>Database:</b>	Landmark
<b>Reference Design:</b>	Plan #1 (6-24-14)	<b>Offset TVD Reference:</b>	Offset Datum

<b>Offset Design</b> Northridge Pad Sec.4-T5N-R66W - Northridge 4AD (Exist.) - Wellbore #1 - Wellbore #1												<b>Offset Site Error:</b>	0.0 ft
Survey Program: 182-MWD												<b>Offset Well Error:</b>	0.0 ft
Reference		Offset		Semi Major Axis			Distance						
Measured Depth (ft)	Vertical Depth (ft)	Measured Depth (ft)	Vertical Depth (ft)	Reference (ft)	Offset (ft)	Highside Toolface (°)	Offset Wellbore Centre +N/-S (ft)	+E/-W (ft)	Between Centres (ft)	Between Ellipses (ft)	Minimum Separation (ft)	Separation Factor	Warning
10,200.0	7,223.0	7,376.5	7,186.7	88.2	28.9	-91.09	-21.3	3,907.3	930.5	815.7	114.79	8.106	
10,300.0	7,223.0	7,375.3	7,185.5	91.0	28.9	-90.90	-21.3	3,907.4	838.8	721.2	117.55	7.135	
10,400.0	7,223.0	7,374.1	7,184.3	93.7	28.9	-90.70	-21.3	3,907.4	749.2	628.9	120.32	6.227	
10,500.0	7,223.0	7,372.9	7,183.1	96.5	28.9	-90.51	-21.4	3,907.4	662.6	539.5	123.09	5.383	
10,600.0	7,223.0	7,371.7	7,181.9	99.3	28.9	-90.31	-21.4	3,907.4	580.3	454.5	125.86	4.611	
10,700.0	7,223.0	7,370.5	7,180.7	102.0	28.9	-90.12	-21.4	3,907.4	504.5	375.9	128.63	3.922	
10,800.0	7,223.0	7,369.3	7,179.5	104.8	28.9	-89.92	-21.4	3,907.4	438.5	307.1	131.40	3.337	
10,900.0	7,223.0	7,368.1	7,178.3	107.6	28.9	-89.73	-21.4	3,907.4	387.3	253.1	134.17	2.886	
11,000.0	7,223.0	7,366.9	7,177.1	110.4	28.9	-89.54	-21.4	3,907.5	357.4	220.4	136.94	2.610	
11,061.4	7,223.0	7,366.2	7,176.4	112.1	28.9	-89.42	-21.4	3,907.5	352.1	213.4	138.64	2.539 CC, ES	
11,100.0	7,223.0	7,365.7	7,175.9	113.1	28.9	-89.34	-21.4	3,907.5	354.2	214.5	139.71	2.535 SF	
11,200.0	7,223.0	7,364.5	7,174.8	115.9	28.9	-89.15	-21.4	3,907.5	378.4	235.9	142.48	2.656	
11,300.0	7,223.0	7,363.3	7,173.6	118.7	28.9	-88.95	-21.4	3,907.5	425.3	280.0	145.25	2.928	
11,400.0	7,223.0	7,362.1	7,172.4	121.5	28.9	-88.76	-21.5	3,907.5	488.5	340.4	148.02	3.300	
11,500.0	7,223.0	7,360.9	7,171.2	124.2	28.9	-88.56	-21.5	3,907.5	562.4	411.6	150.79	3.730	
11,600.0	7,223.0	7,359.7	7,170.0	127.0	28.9	-88.37	-21.5	3,907.5	643.4	489.9	153.56	4.190	
11,700.0	7,223.0	7,358.5	7,168.8	129.8	28.9	-88.17	-21.5	3,907.6	729.2	572.9	156.33	4.665	
11,764.6	7,223.0	7,357.8	7,168.0	131.6	28.9	-88.05	-21.5	3,907.6	786.4	628.3	158.11	4.974	

<b>Company:</b>	Synergy Resources	<b>Local Co-ordinate Reference:</b>	Well SRC Wiedeman A-5-4CHZ
<b>Project:</b>	Sec.5-T5N-R66W	<b>TVD Reference:</b>	WELL @ 4796.0ft (RKB - 13')
<b>Reference Site:</b>	SRC Wiedeman Pad Sec.5-T5N-R66W	<b>MD Reference:</b>	WELL @ 4796.0ft (RKB - 13')
<b>Site Error:</b>	0.0ft	<b>North Reference:</b>	True
<b>Reference Well:</b>	SRC Wiedeman A-5-4CHZ	<b>Survey Calculation Method:</b>	Minimum Curvature
<b>Well Error:</b>	0.0ft	<b>Output errors are at</b>	2.00 sigma
<b>Reference Wellbore</b>	Wellbore #1	<b>Database:</b>	Landmark
<b>Reference Design:</b>	Plan #1 (6-24-14)	<b>Offset TVD Reference:</b>	Offset Datum

<b>Offset Design</b> Northridge Pad Sec.4-T5N-R66W - Northridge 4KD (Exist.) - Wellbore #1 - Wellbore #1													<b>Offset Site Error:</b>	0.0 ft
Survey Program: 124-MWD													<b>Offset Well Error:</b>	0.0 ft
Reference	Offset	Semi Major Axis			Distance									Warning
Measured Depth (ft)	Vertical Depth (ft)	Measured Depth (ft)	Vertical Depth (ft)	Reference (ft)	Offset (ft)	Highside Toolface (°)	Offset Wellbore Centre +N/-S (ft)	+E/-W (ft)	Between Centres (ft)	Between Ellipses (ft)	Minimum Separation (ft)	Separation Factor		
10,800.0	7,223.0	7,410.8	7,172.9	104.8	43.4	89.53	-1,368.0	3,721.5	993.1	848.8	144.36	6.880		
10,855.0	7,223.0	7,411.1	7,173.2	106.3	43.4	89.55	-1,368.0	3,721.5	991.6	845.7	145.88	6.797 CC		
10,900.0	7,223.0	7,411.4	7,173.5	107.6	43.4	89.57	-1,368.0	3,721.5	992.6	845.5	147.13	6.747 ES, SF		

<b>Company:</b>	Synergy Resources	<b>Local Co-ordinate Reference:</b>	Well SRC Wiedeman A-5-4CHZ
<b>Project:</b>	Sec.5-T5N-R66W	<b>TVD Reference:</b>	WELL @ 4796.0ft (RKB - 13')
<b>Reference Site:</b>	SRC Wiedeman Pad Sec.5-T5N-R66W	<b>MD Reference:</b>	WELL @ 4796.0ft (RKB - 13')
<b>Site Error:</b>	0.0ft	<b>North Reference:</b>	True
<b>Reference Well:</b>	SRC Wiedeman A-5-4CHZ	<b>Survey Calculation Method:</b>	Minimum Curvature
<b>Well Error:</b>	0.0ft	<b>Output errors are at</b>	2.00 sigma
<b>Reference Wellbore</b>	Wellbore #1	<b>Database:</b>	Landmark
<b>Reference Design:</b>	Plan #1 (6-24-14)	<b>Offset TVD Reference:</b>	Offset Datum

<b>Offset Design</b> SRC Kelly Farms Pad Sec.4-T5N-R66W - SRC Kelly Farms 12-4-3CHZ - Wellbore #1 - Plan #3 (6-19-1													<b>Offset Site Error:</b>	0.0 ft
Survey Program: 0-MWD													<b>Offset Well Error:</b>	0.0 ft
Reference	Offset	Semi Major Axis		Distance										Warning
Measured Depth (ft)	Vertical Depth (ft)	Measured Depth (ft)	Vertical Depth (ft)	Reference (ft)	Offset (ft)	Highside Toolface (°)	Offset Wellbore Centre +N/-S (ft)	+E/-W (ft)	Between Centres (ft)	Between Ellipses (ft)	Minimum Separation (ft)	Separation Factor		
11,100.0	7,223.0	6,800.0	6,784.4	113.1	15.0	24.11	-542.0	4,812.1	967.0	903.5	63.49	15.230		
11,200.0	7,223.0	6,817.5	6,800.1	115.9	15.0	24.98	-542.0	4,819.9	879.1	812.9	66.21	13.279		
11,300.0	7,223.0	6,850.0	6,828.7	118.7	15.1	26.73	-542.2	4,835.2	793.0	722.6	70.45	11.257		
11,400.0	7,223.0	6,866.0	6,842.6	121.5	15.2	27.66	-542.2	4,843.2	708.7	635.2	73.42	9.651		
11,500.0	7,223.0	6,900.0	6,871.5	124.2	15.3	29.80	-542.3	4,861.0	626.9	548.3	78.58	7.977		
11,600.0	7,223.0	6,927.2	6,894.1	127.0	15.4	31.68	-542.5	4,876.2	548.0	464.6	83.43	6.569		
11,700.0	7,223.0	6,964.0	6,923.7	129.8	15.5	34.50	-542.6	4,898.0	473.1	383.0	90.06	5.253		
11,764.6	7,223.0	6,990.4	6,944.4	131.6	15.7	36.74	-542.7	4,914.4	427.2	332.1	95.13	4.491	CC, ES, SF	

<b>Company:</b>	Synergy Resources	<b>Local Co-ordinate Reference:</b>	Well SRC Wiedeman A-5-4CHZ
<b>Project:</b>	Sec.5-T5N-R66W	<b>TVD Reference:</b>	WELL @ 4796.0ft (RKB - 13')
<b>Reference Site:</b>	SRC Wiedeman Pad Sec.5-T5N-R66W	<b>MD Reference:</b>	WELL @ 4796.0ft (RKB - 13')
<b>Site Error:</b>	0.0ft	<b>North Reference:</b>	True
<b>Reference Well:</b>	SRC Wiedeman A-5-4CHZ	<b>Survey Calculation Method:</b>	Minimum Curvature
<b>Well Error:</b>	0.0ft	<b>Output errors are at</b>	2.00 sigma
<b>Reference Wellbore</b>	Wellbore #1	<b>Database:</b>	Landmark
<b>Reference Design:</b>	Plan #1 (6-24-14)	<b>Offset TVD Reference:</b>	Offset Datum

<b>Offset Design</b>												<b>Offset Site Error:</b>	0.0 ft
SRC Kelly Farms Pad Sec.4-T5N-R66W - SRC Kelly Farms 22-4-3CHZ - Wellbore #1 - Wellbore #1												<b>Offset Well Error:</b>	0.0 ft
Survey Program: 80-MWD													
Reference		Offset		Semi Major Axis			Distance						
Measured Depth (ft)	Vertical Depth (ft)	Measured Depth (ft)	Vertical Depth (ft)	Reference (ft)	Offset (ft)	Highside Toolface (°)	Offset Wellbore Centre +N/-S (ft)	+E/-W (ft)	Between Centres (ft)	Between Ellipses (ft)	Minimum Separation (ft)	Separation Factor	Warning
11,300.0	7,223.0	6,849.7	6,828.9	118.7	14.8	49.94	-793.4	4,894.1	929.9	824.0	105.85	8.785	
11,400.0	7,223.0	6,883.0	6,858.4	121.5	14.9	52.30	-793.3	4,909.7	852.6	741.4	111.19	7.668	
11,500.0	7,223.0	6,883.0	6,858.4	124.2	14.9	52.30	-793.3	4,909.7	778.8	665.4	113.43	6.866	
11,600.0	7,223.0	6,920.9	6,891.1	127.0	15.1	55.14	-793.7	4,928.9	709.7	590.2	119.47	5.940	
11,700.0	7,223.0	6,951.4	6,916.8	129.8	15.2	57.54	-794.5	4,945.2	646.4	521.5	124.87	5.177	
11,764.6	7,223.0	6,972.0	6,933.8	131.6	15.3	59.22	-795.4	4,956.7	609.3	480.8	128.48	4.742 CC, ES, SF	

<b>Company:</b>	Synergy Resources	<b>Local Co-ordinate Reference:</b>	Well SRC Wiedeman A-5-4CHZ
<b>Project:</b>	Sec.5-T5N-R66W	<b>TVD Reference:</b>	WELL @ 4796.0ft (RKB - 13')
<b>Reference Site:</b>	SRC Wiedeman Pad Sec.5-T5N-R66W	<b>MD Reference:</b>	WELL @ 4796.0ft (RKB - 13')
<b>Site Error:</b>	0.0ft	<b>North Reference:</b>	True
<b>Reference Well:</b>	SRC Wiedeman A-5-4CHZ	<b>Survey Calculation Method:</b>	Minimum Curvature
<b>Well Error:</b>	0.0ft	<b>Output errors are at</b>	2.00 sigma
<b>Reference Wellbore</b>	Wellbore #1	<b>Database:</b>	Landmark
<b>Reference Design:</b>	Plan #1 (6-24-14)	<b>Offset TVD Reference:</b>	Offset Datum

<b>Offset Design</b>												<b>Offset Site Error:</b>	0.0 ft
SRC Kelly Farms Pad Sec.4-T5N-R66W - SRC Kelly Farms A-4-3CHZ - Wellbore #1 - Wellbore #1												<b>Offset Well Error:</b>	0.0 ft
Survey Program: 79-MWD													
Reference		Offset		Semi Major Axis			Distance						
Measured Depth (ft)	Vertical Depth (ft)	Measured Depth (ft)	Vertical Depth (ft)	Reference (ft)	Offset (ft)	Highside Toolface (°)	Offset Wellbore Centre +N/-S (ft)	+E/-W (ft)	Between Centres (ft)	Between Ellipses (ft)	Minimum Separation (ft)	Separation Factor	Warning
11,200.0	7,223.0	6,853.8	6,823.5	115.9	15.1	-2.73	-340.9	4,900.6	926.4	887.2	39.26	23.599	
11,300.0	7,223.0	6,886.0	6,852.6	118.7	15.2	-2.65	-342.5	4,914.3	835.6	795.6	40.00	20.892	
11,400.0	7,223.0	6,886.0	6,852.6	121.5	15.2	-2.65	-342.5	4,914.3	745.4	704.7	40.72	18.305	
11,500.0	7,223.0	6,886.0	6,852.6	124.2	15.2	-2.65	-342.5	4,914.3	658.0	616.6	41.45	15.876	
11,600.0	7,223.0	6,929.3	6,890.3	127.0	15.3	-2.59	-344.3	4,935.5	571.1	528.9	42.20	13.534	
11,700.0	7,223.0	6,975.0	6,927.8	129.8	15.5	-2.64	-345.3	4,961.6	488.6	445.6	43.00	11.364	
11,764.6	7,223.0	6,975.0	6,927.8	131.6	15.5	-2.64	-345.3	4,961.6	435.7	392.2	43.47	10.024 CC, ES, SF	

<b>Company:</b>	Synergy Resources	<b>Local Co-ordinate Reference:</b>	Well SRC Wiedeman A-5-4CHZ
<b>Project:</b>	Sec.5-T5N-R66W	<b>TVD Reference:</b>	WELL @ 4796.0ft (RKB - 13')
<b>Reference Site:</b>	SRC Wiedeman Pad Sec.5-T5N-R66W	<b>MD Reference:</b>	WELL @ 4796.0ft (RKB - 13')
<b>Site Error:</b>	0.0ft	<b>North Reference:</b>	True
<b>Reference Well:</b>	SRC Wiedeman A-5-4CHZ	<b>Survey Calculation Method:</b>	Minimum Curvature
<b>Well Error:</b>	0.0ft	<b>Output errors are at</b>	2.00 sigma
<b>Reference Wellbore</b>	Wellbore #1	<b>Database:</b>	Landmark
<b>Reference Design:</b>	Plan #1 (6-24-14)	<b>Offset TVD Reference:</b>	Offset Datum

<b>Offset Design</b>												<b>Offset Site Error:</b>	0.0 ft
SRC Kelly Farms Pad Sec.4-T5N-R66W - SRC Kelly Farms A-4-3NHZ - Wellbore #1 - Wellbore #1												<b>Offset Well Error:</b>	0.0 ft
Survey Program: 174-MWD													
Reference		Offset		Semi Major Axis			Distance						
Measured Depth (ft)	Vertical Depth (ft)	Measured Depth (ft)	Vertical Depth (ft)	Reference (ft)	Offset (ft)	Highside Toolface (°)	Offset Wellbore Centre +N/-S (ft)	+E/-W (ft)	Between Centres (ft)	Between Ellipses (ft)	Minimum Separation (ft)	Separation Factor	Warning
11,300.0	7,223.0	6,704.0	6,651.1	118.7	16.6	-25.81	-96.7	4,865.7	937.5	869.3	68.28	13.732	
11,400.0	7,223.0	6,740.6	6,680.6	121.5	16.7	-27.21	-95.0	4,887.3	861.5	789.4	72.09	11.950	
11,500.0	7,223.0	6,768.8	6,702.3	124.2	16.8	-28.32	-93.7	4,905.1	789.0	713.5	75.51	10.449	
11,600.0	7,223.0	6,804.3	6,728.7	127.0	17.0	-29.78	-92.0	4,929.0	720.3	640.6	79.64	9.044	
11,700.0	7,223.0	6,860.4	6,769.1	129.8	17.3	-32.25	-89.6	4,967.7	654.7	568.9	85.80	7.631	
11,764.6	7,223.0	6,883.0	6,785.2	131.6	17.4	-33.33	-88.7	4,983.6	614.0	525.2	88.86	6.910 CC, ES, SF	



<b>Company:</b>	Synergy Resources	<b>Local Co-ordinate Reference:</b>	Well SRC Wiedeman A-5-4CHZ
<b>Project:</b>	Sec.5-T5N-R66W	<b>TVD Reference:</b>	WELL @ 4796.0ft (RKB - 13')
<b>Reference Site:</b>	SRC Wiedeman Pad Sec.5-T5N-R66W	<b>MD Reference:</b>	WELL @ 4796.0ft (RKB - 13')
<b>Site Error:</b>	0.0ft	<b>North Reference:</b>	True
<b>Reference Well:</b>	SRC Wiedeman A-5-4CHZ	<b>Survey Calculation Method:</b>	Minimum Curvature
<b>Well Error:</b>	0.0ft	<b>Output errors are at</b>	2.00 sigma
<b>Reference Wellbore</b>	Wellbore #1	<b>Database:</b>	Landmark
<b>Reference Design:</b>	Plan #1 (6-24-14)	<b>Offset TVD Reference:</b>	Offset Datum

Offset Design SRC Wiedeman Pad Sec.5-T5N-R66W - SRC Wiedeman 22-5-4CHZ - Wellbore #1 - Plan #1 (6-24-14)													Offset Site Error:	0.0ft
Survey Program: 0-MWD													Offset Well Error:	0.0ft
Reference		Offset		Semi Major Axis			Distance							Warning
Measured Depth (ft)	Vertical Depth (ft)	Measured Depth (ft)	Vertical Depth (ft)	Reference (ft)	Offset (ft)	Highside Toolface (°)	Offset Wellbore Centre +N/-S (ft)	+E/-W (ft)	Between Centres (ft)	Between Ellipses (ft)	Minimum Separation (ft)	Separation Factor		
0.0	0.0	0.0	0.0	0.0	0.0	-174.68	-29.9	-2.8	30.0					
100.0	100.0	100.0	100.0	0.1	0.1	-174.68	-29.9	-2.8	30.0	29.8	0.22	133.486		
200.0	200.0	200.0	200.0	0.3	0.3	-174.68	-29.9	-2.8	30.0	29.3	0.67	44.495		
300.0	300.0	300.0	300.0	0.6	0.6	-174.68	-29.9	-2.8	30.0	28.9	1.12	26.697		
400.0	400.0	400.0	400.0	0.8	0.8	-174.68	-29.9	-2.8	30.0	28.4	1.57	19.069		
500.0	500.0	500.0	500.0	1.0	1.0	-174.68	-29.9	-2.8	30.0	28.0	2.02	14.832		
600.0	600.0	600.0	600.0	1.2	1.2	-174.68	-29.9	-2.8	30.0	27.5	2.47	12.135		
700.0	700.0	700.0	700.0	1.5	1.5	-174.68	-29.9	-2.8	30.0	27.1	2.92	10.268		
800.0	800.0	800.0	800.0	1.7	1.7	-174.68	-29.9	-2.8	30.0	26.6	3.37	8.899 CC, ES		
900.0	900.0	898.9	898.9	1.9	1.9	-174.09	-31.5	-3.3	31.7	27.9	3.79	8.360		
1,000.0	1,000.0	997.7	997.5	2.1	2.1	-172.64	-36.4	-4.7	36.8	32.6	4.20	8.770		
1,100.0	1,100.0	1,095.9	1,095.4	2.4	2.3	-170.96	-44.5	-7.1	45.3	40.7	4.61	9.824		
1,200.0	1,200.0	1,193.4	1,192.2	2.6	2.5	-169.46	-55.8	-10.4	57.2	52.2	5.04	11.352		
1,300.0	1,300.0	1,290.3	1,288.0	2.8	2.7	-14.12	-70.0	-14.6	70.9	65.4	5.43	13.051		
1,400.0	1,399.8	1,389.2	1,385.3	3.0	3.0	-13.91	-86.6	-19.4	83.3	77.5	5.81	14.336		
1,486.6	1,486.1	1,475.4	1,470.2	3.1	3.3	-14.20	-101.1	-23.7	91.3	85.2	6.15	14.864		
1,500.0	1,499.5	1,488.8	1,483.3	3.2	3.3	-14.28	-103.4	-24.3	92.4	86.2	6.20	14.903		
1,600.0	1,599.0	1,588.5	1,581.5	3.4	3.7	-14.80	-120.2	-29.3	100.3	93.6	6.62	15.150		
1,700.0	1,698.5	1,688.2	1,679.6	3.6	4.0	-15.24	-136.9	-34.2	108.1	101.1	7.05	15.345		
1,800.0	1,798.0	1,787.8	1,777.8	3.8	4.4	-15.63	-153.7	-39.1	116.0	108.5	7.48	15.501		
1,900.0	1,897.5	1,887.5	1,875.9	4.0	4.8	-15.96	-170.5	-44.0	123.8	115.9	7.93	15.623		
2,000.0	1,997.0	1,987.2	1,974.0	4.3	5.1	-16.26	-187.2	-48.9	131.7	123.3	8.38	15.720		
2,100.0	2,096.5	2,086.9	2,072.2	4.5	5.5	-16.52	-204.0	-53.9	139.6	130.8	8.84	15.798		
2,200.0	2,196.0	2,186.6	2,170.3	4.8	5.9	-16.76	-220.8	-58.8	147.5	138.2	9.30	15.861		
2,300.0	2,295.5	2,286.3	2,268.5	5.1	6.3	-16.97	-237.5	-63.7	155.4	145.6	9.76	15.910		
2,400.0	2,395.0	2,386.0	2,366.6	5.3	6.6	-17.16	-254.3	-68.6	163.2	153.0	10.23	15.950		
2,500.0	2,494.5	2,485.7	2,464.8	5.6	7.0	-17.33	-271.1	-73.5	171.1	160.4	10.71	15.982		
2,600.0	2,594.0	2,585.3	2,562.9	5.9	7.4	-17.49	-287.8	-78.5	179.0	167.8	11.18	16.007		
2,700.0	2,693.5	2,685.0	2,661.0	6.1	7.8	-17.63	-304.6	-83.4	186.9	175.2	11.66	16.026		
2,800.0	2,793.0	2,784.7	2,759.2	6.4	8.2	-17.76	-321.4	-88.3	194.8	182.7	12.14	16.042		
2,900.0	2,892.5	2,884.4	2,857.3	6.7	8.6	-17.89	-338.2	-93.2	202.7	190.1	12.63	16.053		
3,000.0	2,992.0	2,984.1	2,955.5	7.0	9.0	-18.00	-354.9	-98.1	210.6	197.5	13.11	16.062		
3,100.0	3,091.5	3,083.8	3,053.6	7.3	9.4	-18.10	-371.7	-103.1	218.5	204.9	13.60	16.068		
3,200.0	3,191.0	3,183.5	3,151.8	7.5	9.8	-18.20	-388.5	-108.0	226.4	212.3	14.08	16.072		
3,300.0	3,290.5	3,283.2	3,249.9	7.8	10.2	-18.29	-405.2	-112.9	234.3	219.7	14.57	16.075		
3,400.0	3,390.0	3,382.8	3,348.1	8.1	10.6	-18.38	-422.0	-117.8	242.2	227.1	15.06	16.076		
3,500.0	3,489.5	3,482.5	3,446.2	8.4	11.0	-18.46	-438.8	-122.7	250.0	234.5	15.55	16.076		
3,600.0	3,589.0	3,582.2	3,544.3	8.7	11.4	-18.53	-455.5	-127.7	257.9	241.9	16.05	16.075		
3,700.0	3,688.5	3,681.9	3,642.5	9.0	11.8	-18.60	-472.3	-132.6	265.8	249.3	16.54	16.074		
3,800.0	3,788.0	3,781.6	3,740.6	9.3	12.2	-18.67	-489.1	-137.5	273.7	256.7	17.03	16.071		
3,900.0	3,887.5	3,881.3	3,838.8	9.6	12.6	-18.73	-505.8	-142.4	281.6	264.1	17.53	16.069		
4,000.0	3,987.0	3,981.0	3,936.9	9.8	13.0	-18.79	-522.6	-147.3	289.5	271.5	18.02	16.065		
4,100.0	4,086.5	4,080.6	4,035.1	10.1	13.4	-18.85	-539.4	-152.2	297.4	278.9	18.52	16.062		
4,200.0	4,186.0	4,180.3	4,133.2	10.4	13.8	-18.90	-556.1	-157.2	305.3	286.3	19.01	16.058		
4,300.0	4,285.5	4,280.0	4,231.3	10.7	14.2	-18.95	-572.9	-162.1	313.2	293.7	19.51	16.054		
4,400.0	4,385.0	4,379.7	4,329.5	11.0	14.6	-19.00	-589.7	-167.0	321.1	301.1	20.01	16.049		
4,500.0	4,484.5	4,479.4	4,427.6	11.3	15.0	-19.04	-606.5	-171.9	329.0	308.5	20.51	16.045		
4,600.0	4,584.0	4,579.1	4,525.8	11.6	15.4	-19.09	-623.2	-176.8	336.9	315.9	21.00	16.040		
4,700.0	4,683.5	4,678.8	4,623.9	11.9	15.8	-19.13	-640.0	-181.8	344.8	323.3	21.50	16.035		
4,800.0	4,783.0	4,778.5	4,722.1	12.2	16.2	-19.17	-656.8	-186.7	352.7	330.7	22.00	16.031		
4,900.0	4,882.5	4,878.1	4,820.2	12.5	16.6	-19.21	-673.5	-191.6	360.6	338.1	22.50	16.026		
5,000.0	4,982.0	4,977.8	4,918.3	12.8	17.0	-19.24	-690.3	-196.5	368.5	345.5	23.00	16.021		

CC - Min centre to center distance or convergent point, SF - min separation factor, ES - min ellipse separation

<b>Company:</b>	Synergy Resources	<b>Local Co-ordinate Reference:</b>	Well SRC Wiedeman A-5-4CHZ
<b>Project:</b>	Sec.5-T5N-R66W	<b>TVD Reference:</b>	WELL @ 4796.0ft (RKB - 13')
<b>Reference Site:</b>	SRC Wiedeman Pad Sec.5-T5N-R66W	<b>MD Reference:</b>	WELL @ 4796.0ft (RKB - 13')
<b>Site Error:</b>	0.0ft	<b>North Reference:</b>	True
<b>Reference Well:</b>	SRC Wiedeman A-5-4CHZ	<b>Survey Calculation Method:</b>	Minimum Curvature
<b>Well Error:</b>	0.0ft	<b>Output errors are at</b>	2.00 sigma
<b>Reference Wellbore</b>	Wellbore #1	<b>Database:</b>	Landmark
<b>Reference Design:</b>	Plan #1 (6-24-14)	<b>Offset TVD Reference:</b>	Offset Datum

Offset Design SRC Wiedeman Pad Sec.5-T5N-R66W - SRC Wiedeman 22-5-4CHZ - Wellbore #1 - Plan #1 (6-24-14)												Offset Site Error:	0.0 ft
Survey Program: 0-MWD												Offset Well Error:	0.0 ft
Reference		Offset		Semi Major Axis			Distance						
Measured Depth (ft)	Vertical Depth (ft)	Measured Depth (ft)	Vertical Depth (ft)	Reference (ft)	Offset (ft)	Highside Toolface (°)	Offset Wellbore Centre +N/-S (ft)	+E/-W (ft)	Between Centres (ft)	Between Ellipses (ft)	Minimum Separation (ft)	Separation Factor	Warning
5,100.0	5,081.5	5,077.5	5,016.5	13.1	17.4	-19.28	-707.1	-201.4	376.4	352.9	23.50	16.016	
5,200.0	5,181.0	5,177.2	5,114.6	13.3	17.8	-19.31	-723.8	-206.4	384.3	360.3	24.00	16.011	
5,300.0	5,280.5	5,276.9	5,212.8	13.6	18.2	-19.34	-740.6	-211.3	392.2	367.7	24.50	16.007	
5,400.0	5,380.0	5,376.6	5,310.9	13.9	18.6	-19.37	-757.4	-216.2	400.1	375.1	25.00	16.002	
5,500.0	5,479.5	5,476.3	5,409.1	14.2	19.0	-19.40	-774.1	-221.1	408.0	382.5	25.50	15.997	
5,600.0	5,579.0	5,576.0	5,507.2	14.5	19.4	-19.43	-790.9	-226.0	415.9	389.9	26.01	15.992	
5,700.0	5,678.5	5,675.6	5,605.4	14.8	19.8	-19.46	-807.7	-231.0	423.8	397.3	26.51	15.988	
5,800.0	5,778.0	5,775.3	5,703.5	15.1	20.2	-19.49	-824.4	-235.9	431.7	404.7	27.01	15.983	
5,900.0	5,877.5	5,875.7	5,802.3	15.4	20.6	-19.51	-841.3	-240.8	439.6	412.1	27.51	15.978	
6,000.0	5,977.0	5,993.4	5,918.6	15.7	20.9	-19.60	-858.7	-245.9	445.3	417.3	28.01	15.897	
6,037.1	6,013.9	6,037.2	5,962.1	15.8	21.0	-19.66	-863.9	-247.5	446.4	418.2	28.20	15.833	
6,100.0	6,076.5	6,111.5	6,036.0	16.0	21.2	-19.77	-871.4	-249.7	447.7	419.2	28.47	15.722	
6,200.0	6,176.3	6,229.7	6,153.8	16.2	21.4	-19.89	-879.5	-252.0	449.0	420.1	28.85	15.563	
6,300.0	6,276.3	6,347.9	6,272.0	16.3	21.6	-19.95	-883.0	-253.0	449.6	420.4	29.18	15.405	
6,323.7	6,300.0	6,375.9	6,300.0	16.4	21.6	-174.35	-883.1	-253.1	449.6	412.0	37.60	11.957	
6,400.0	6,376.3	6,452.2	6,376.3	16.5	21.7	-174.35	-883.1	-253.1	449.6	411.8	37.82	11.888	
6,500.0	6,476.3	6,552.2	6,476.3	16.7	21.8	-174.35	-883.1	-253.1	449.6	411.5	38.09	11.804	
6,530.5	6,506.8	6,582.7	6,506.8	16.7	21.9	-174.35	-883.1	-253.1	449.6	411.4	38.17	11.779	
6,550.0	6,526.3	6,603.6	6,527.7	16.7	21.9	96.52	-883.1	-252.8	449.6	419.5	30.05	14.960	
6,600.0	6,576.2	6,657.5	6,581.4	16.8	22.0	96.50	-883.1	-249.3	449.6	419.4	30.20	14.888	
6,650.0	6,625.7	6,711.3	6,634.7	16.9	22.0	96.45	-883.0	-241.8	449.5	419.2	30.32	14.827	
6,700.0	6,674.7	6,765.1	6,687.2	16.9	22.0	96.36	-882.8	-230.3	449.4	419.0	30.42	14.776	
6,750.0	6,722.9	6,818.7	6,738.6	16.9	22.0	96.24	-882.5	-214.9	449.3	418.8	30.50	14.730	
6,800.0	6,770.0	6,872.3	6,788.7	17.0	22.1	96.08	-882.3	-195.7	449.2	418.6	30.58	14.688	
6,850.0	6,815.8	6,925.8	6,837.0	17.0	22.1	95.90	-881.9	-172.9	449.0	418.4	30.67	14.643	
6,900.0	6,860.1	6,979.2	6,883.5	17.0	22.1	95.68	-881.5	-146.7	448.9	418.1	30.77	14.590	
6,950.0	6,902.7	7,032.4	6,927.7	17.0	22.0	95.44	-881.1	-117.1	448.7	417.8	30.90	14.521	
7,000.0	6,943.4	7,085.4	6,969.5	17.0	22.0	95.16	-880.6	-84.5	448.5	417.4	31.08	14.428	
7,050.0	6,981.9	7,138.3	7,008.6	17.1	22.0	94.86	-880.0	-48.9	448.3	416.9	31.34	14.302	
7,100.0	7,018.1	7,190.9	7,044.8	17.1	22.0	94.54	-879.4	-10.8	448.1	416.4	31.70	14.136	
7,150.0	7,051.9	7,243.3	7,078.0	17.1	22.0	94.19	-878.8	29.7	447.8	415.7	32.17	13.922	
7,200.0	7,083.0	7,295.5	7,108.1	17.1	22.1	93.83	-878.2	72.4	447.6	414.9	32.78	13.657	
7,250.0	7,111.2	7,347.5	7,134.8	17.2	22.1	93.44	-877.5	117.0	447.4	413.9	33.54	13.340	
7,300.0	7,136.6	7,399.2	7,158.2	17.3	22.2	93.04	-876.8	163.1	447.3	412.8	34.47	12.975	
7,350.0	7,158.8	7,450.7	7,178.0	17.6	22.3	92.62	-876.1	210.6	447.1	411.5	35.57	12.569	
7,400.0	7,177.9	7,502.0	7,194.4	18.2	22.4	92.19	-875.3	259.2	446.9	410.1	36.84	12.131	
7,450.0	7,193.7	7,553.0	7,207.1	18.9	22.6	91.75	-874.6	308.5	446.8	408.5	38.27	11.675	
7,500.0	7,206.2	7,603.7	7,216.3	19.6	23.0	91.31	-873.8	358.4	446.7	406.9	39.85	11.210	
7,550.0	7,215.2	7,654.2	7,221.9	20.4	23.5	90.86	-873.0	408.5	446.6	405.1	41.56	10.747	
7,600.0	7,220.8	7,704.4	7,224.0	21.3	24.1	90.40	-872.3	458.7	446.6	403.2	43.38	10.296	
7,650.0	7,223.0	7,754.3	7,224.0	22.3	24.9	90.13	-871.5	508.6	446.6	401.3	45.29	9.859	
7,655.5	7,223.0	7,759.9	7,224.0	22.4	25.0	90.13	-871.4	514.1	446.6	401.1	45.51	9.813	
7,700.0	7,223.0	7,804.3	7,224.0	23.3	25.7	90.13	-870.7	558.6	446.6	399.3	47.25	9.451	
7,800.0	7,223.0	7,904.3	7,224.0	25.4	27.6	90.13	-869.2	658.6	446.6	395.1	51.43	8.683	
7,900.0	7,223.0	8,004.3	7,224.0	27.6	29.7	90.13	-867.7	758.6	446.5	390.7	55.86	7.994	
8,000.0	7,223.0	8,104.3	7,224.0	29.9	31.9	90.13	-866.2	858.6	446.5	386.0	60.49	7.382	
8,100.0	7,223.0	8,204.3	7,224.0	32.3	34.2	90.13	-864.6	958.6	446.5	381.2	65.27	6.841	
8,200.0	7,223.0	8,304.3	7,224.0	34.7	36.6	90.13	-863.1	1,058.6	446.5	376.3	70.17	6.363	
8,300.0	7,223.0	8,404.3	7,224.0	37.2	39.0	90.13	-861.6	1,158.6	446.5	371.3	75.18	5.939	
8,400.0	7,223.0	8,504.3	7,224.0	39.8	41.5	90.13	-860.1	1,258.5	446.5	366.2	80.26	5.563	
8,500.0	7,223.0	8,604.3	7,224.0	42.3	44.0	90.13	-858.5	1,358.5	446.5	361.1	85.41	5.227	
8,600.0	7,223.0	8,704.3	7,224.0	44.9	46.6	90.13	-857.0	1,458.5	446.4	355.8	90.61	4.927	

CC - Min centre to center distance or convergent point, SF - min separation factor, ES - min ellipse separation

<b>Company:</b>	Synergy Resources	<b>Local Co-ordinate Reference:</b>	Well SRC Wiedeman A-5-4CHZ
<b>Project:</b>	Sec.5-T5N-R66W	<b>TVD Reference:</b>	WELL @ 4796.0ft (RKB - 13')
<b>Reference Site:</b>	SRC Wiedeman Pad Sec.5-T5N-R66W	<b>MD Reference:</b>	WELL @ 4796.0ft (RKB - 13')
<b>Site Error:</b>	0.0ft	<b>North Reference:</b>	True
<b>Reference Well:</b>	SRC Wiedeman A-5-4CHZ	<b>Survey Calculation Method:</b>	Minimum Curvature
<b>Well Error:</b>	0.0ft	<b>Output errors are at</b>	2.00 sigma
<b>Reference Wellbore</b>	Wellbore #1	<b>Database:</b>	Landmark
<b>Reference Design:</b>	Plan #1 (6-24-14)	<b>Offset TVD Reference:</b>	Offset Datum

Offset Design SRC Wiedeman Pad Sec.5-T5N-R66W - SRC Wiedeman 22-5-4CHZ - Wellbore #1 - Plan #1 (6-24-14)													Offset Site Error:	0.0 ft
Survey Program: 0-MWD													Offset Well Error:	0.0 ft
Reference		Offset		Semi Major Axis			Distance							
Measured Depth (ft)	Vertical Depth (ft)	Measured Depth (ft)	Vertical Depth (ft)	Reference (ft)	Offset (ft)	Highside Toolface (°)	Offset Wellbore Centre +N/-S (ft)	+E/-W (ft)	Between Centres (ft)	Between Ellipses (ft)	Minimum Separation (ft)	Separation Factor	Warning	
8,700.0	7,223.0	8,804.3	7,224.0	47.5	49.2	90.13	-855.5	1,558.5	446.4	350.6	95.86	4.657		
8,800.0	7,223.0	8,904.3	7,224.0	50.2	51.8	90.13	-854.0	1,658.5	446.4	345.3	101.15	4.413		
8,900.0	7,223.0	9,004.3	7,224.0	52.8	54.4	90.13	-852.4	1,758.5	446.4	339.9	106.47	4.193		
9,000.0	7,223.0	9,104.3	7,224.0	55.5	57.1	90.13	-850.9	1,858.5	446.4	334.6	111.82	3.992		
9,100.0	7,223.0	9,204.3	7,224.0	58.2	59.7	90.13	-849.4	1,958.5	446.4	329.2	117.20	3.809		
9,200.0	7,223.0	9,304.3	7,224.0	60.9	62.4	90.13	-847.9	2,058.4	446.4	323.8	122.59	3.641		
9,300.0	7,223.0	9,404.3	7,224.0	63.6	65.1	90.13	-846.3	2,158.4	446.4	318.3	128.01	3.487		
9,400.0	7,223.0	9,504.3	7,224.0	66.3	67.8	90.13	-844.8	2,258.4	446.3	312.9	133.44	3.345		
9,500.0	7,223.0	9,604.3	7,224.0	69.0	70.5	90.13	-843.3	2,358.4	446.3	307.4	138.88	3.214		
9,600.0	7,223.0	9,704.3	7,224.0	71.8	73.2	90.13	-841.8	2,458.4	446.3	302.0	144.34	3.092		
9,700.0	7,223.0	9,804.3	7,224.0	74.5	75.9	90.13	-840.2	2,558.4	446.3	296.5	149.81	2.979		
9,800.0	7,223.0	9,904.3	7,224.0	77.2	78.6	90.13	-838.7	2,658.4	446.3	291.0	155.28	2.874		
9,900.0	7,223.0	10,004.3	7,224.0	80.0	81.3	90.13	-837.2	2,758.4	446.3	285.5	160.77	2.776		
10,000.0	7,223.0	10,104.3	7,224.0	82.7	84.1	90.13	-835.7	2,858.4	446.3	280.0	166.27	2.684		
10,100.0	7,223.0	10,204.3	7,224.0	85.5	86.8	90.13	-834.1	2,958.3	446.2	274.5	171.77	2.598		
10,200.0	7,223.0	10,304.3	7,224.0	88.2	89.5	90.13	-832.6	3,058.3	446.2	268.9	177.28	2.517		
10,300.0	7,223.0	10,404.3	7,224.0	91.0	92.3	90.13	-831.1	3,158.3	446.2	263.4	182.80	2.441		
10,400.0	7,223.0	10,504.3	7,224.0	93.7	95.0	90.13	-829.6	3,258.3	446.2	257.9	188.32	2.369		
10,500.0	7,223.0	10,604.3	7,224.0	96.5	97.8	90.13	-828.0	3,358.3	446.2	252.3	193.85	2.302		
10,600.0	7,223.0	10,704.3	7,224.0	99.3	100.5	90.13	-826.5	3,458.3	446.2	246.8	199.38	2.238		
10,700.0	7,223.0	10,804.3	7,224.0	102.0	103.3	90.13	-825.0	3,558.3	446.2	241.2	204.91	2.177		
10,800.0	7,223.0	10,904.3	7,224.0	104.8	106.1	90.13	-823.5	3,658.3	446.1	235.7	210.45	2.120		
10,900.0	7,223.0	11,004.3	7,224.0	107.6	108.8	90.13	-821.9	3,758.2	446.1	230.1	216.00	2.065		
11,000.0	7,223.0	11,104.3	7,224.0	110.4	111.6	90.13	-820.4	3,858.2	446.1	224.6	221.54	2.014		
11,100.0	7,223.0	11,204.3	7,224.0	113.1	114.4	90.13	-818.9	3,958.2	446.1	219.0	227.09	1.964		
11,200.0	7,223.0	11,304.3	7,224.0	115.9	117.1	90.13	-817.4	4,058.2	446.1	213.4	232.65	1.917		
11,300.0	7,223.0	11,404.3	7,224.0	118.7	119.9	90.13	-815.8	4,158.2	446.1	207.9	238.20	1.873		
11,400.0	7,223.0	11,504.3	7,224.0	121.5	122.7	90.13	-814.3	4,258.2	446.1	202.3	243.76	1.830		
11,500.0	7,223.0	11,604.3	7,224.0	124.2	125.4	90.13	-812.8	4,358.2	446.1	196.7	249.32	1.789		
11,600.0	7,223.0	11,704.3	7,224.0	127.0	128.2	90.13	-811.3	4,458.2	446.0	191.2	254.88	1.750		
11,700.0	7,223.0	11,804.3	7,224.0	129.8	131.0	90.13	-809.7	4,558.2	446.0	185.6	260.45	1.713		
11,705.9	7,223.0	11,810.2	7,224.0	130.0	131.2	90.13	-809.6	4,564.1	446.0	185.2	260.78	1.710		
11,764.6	7,223.0	11,824.1	7,224.0	131.6	131.5	90.13	-809.4	4,577.9	448.3	185.5	262.80	1.706 SF		

<b>Company:</b>	Synergy Resources	<b>Local Co-ordinate Reference:</b>	Well SRC Wiedeman A-5-4CHZ
<b>Project:</b>	Sec.5-T5N-R66W	<b>TVD Reference:</b>	WELL @ 4796.0ft (RKB - 13')
<b>Reference Site:</b>	SRC Wiedeman Pad Sec.5-T5N-R66W	<b>MD Reference:</b>	WELL @ 4796.0ft (RKB - 13')
<b>Site Error:</b>	0.0ft	<b>North Reference:</b>	True
<b>Reference Well:</b>	SRC Wiedeman A-5-4CHZ	<b>Survey Calculation Method:</b>	Minimum Curvature
<b>Well Error:</b>	0.0ft	<b>Output errors are at</b>	2.00 sigma
<b>Reference Wellbore</b>	Wellbore #1	<b>Database:</b>	Landmark
<b>Reference Design:</b>	Plan #1 (6-24-14)	<b>Offset TVD Reference:</b>	Offset Datum

Offset Design SRC Wiedeman Pad Sec.5-T5N-R66W - SRC Wiedeman 22-5-4NHZ - Wellbore #1 - Plan #1 (6-24-14)													Offset Site Error:	0.0 ft
Survey Program: 0-MWD													Offset Well Error:	0.0 ft
Reference		Offset		Semi Major Axis			Distance							Warning
Measured Depth (ft)	Vertical Depth (ft)	Measured Depth (ft)	Vertical Depth (ft)	Reference (ft)	Offset (ft)	Highside Toolface (°)	Offset Wellbore Centre +N/-S (ft)	+E/-W (ft)	Between Centres (ft)	Between Ellipses (ft)	Minimum Separation (ft)	Separation Factor		
0.0	0.0	0.0	0.0	0.0	0.0	-174.68	-14.9	-1.4	15.0	15.0	0.00	N/A		
100.0	100.0	100.0	100.0	0.1	0.1	-174.68	-14.9	-1.4	15.0	14.8	0.22	66.743		
200.0	200.0	200.0	200.0	0.3	0.3	-174.68	-14.9	-1.4	15.0	14.3	0.67	22.248		
300.0	300.0	300.0	300.0	0.6	0.6	-174.68	-14.9	-1.4	15.0	13.9	1.12	13.349		
400.0	400.0	400.0	400.0	0.8	0.8	-174.68	-14.9	-1.4	15.0	13.4	1.57	9.535		
500.0	500.0	500.0	500.0	1.0	1.0	-174.68	-14.9	-1.4	15.0	13.0	2.02	7.416		
600.0	600.0	600.0	600.0	1.2	1.2	-174.68	-14.9	-1.4	15.0	12.5	2.47	6.068		
700.0	700.0	700.0	700.0	1.5	1.5	-174.68	-14.9	-1.4	15.0	12.1	2.92	5.134		
800.0	800.0	800.0	800.0	1.7	1.7	-174.68	-14.9	-1.4	15.0	11.6	3.37	4.450		
900.0	900.0	900.0	900.0	1.9	1.9	-174.68	-14.9	-1.4	15.0	11.2	3.82	3.926		
1,000.0	1,000.0	1,000.0	1,000.0	2.1	2.1	-174.68	-14.9	-1.4	15.0	10.7	4.27	3.513 CC, ES		
1,100.0	1,100.0	1,099.5	1,099.4	2.4	2.3	-173.21	-16.6	-2.0	16.7	12.0	4.69	3.557		
1,200.0	1,200.0	1,198.7	1,198.5	2.6	2.5	-170.17	-21.4	-3.7	21.8	16.7	5.10	4.277		
1,300.0	1,300.0	1,297.6	1,297.0	2.8	2.7	-13.75	-29.5	-6.6	28.7	23.2	5.48	5.234		
1,400.0	1,399.8	1,396.2	1,395.0	3.0	2.9	-13.08	-40.7	-10.6	35.6	29.7	5.84	6.094		
1,486.6	1,486.1	1,482.5	1,480.3	3.1	3.1	-13.21	-52.3	-14.8	40.7	34.6	6.16	6.618		
1,500.0	1,499.5	1,495.8	1,493.6	3.2	3.2	-13.30	-54.1	-15.4	41.4	35.2	6.21	6.661		
1,600.0	1,599.0	1,595.7	1,592.4	3.4	3.4	-13.85	-67.7	-20.2	45.9	39.3	6.61	6.951		
1,700.0	1,698.5	1,695.6	1,691.3	3.6	3.7	-14.31	-81.2	-25.1	50.5	43.5	7.02	7.197		
1,800.0	1,798.0	1,795.5	1,790.1	3.8	4.0	-14.69	-94.7	-29.9	55.1	47.7	7.44	7.406		
1,900.0	1,897.5	1,895.4	1,889.0	4.0	4.3	-15.01	-108.2	-34.7	59.7	51.8	7.87	7.585		
2,000.0	1,997.0	1,995.3	1,987.8	4.3	4.6	-15.29	-121.8	-39.6	64.3	56.0	8.30	7.738		
2,100.0	2,096.5	2,095.2	2,086.7	4.5	4.9	-15.53	-135.3	-44.4	68.8	60.1	8.75	7.871		
2,200.0	2,196.0	2,195.1	2,185.6	4.8	5.2	-15.74	-148.8	-49.3	73.4	64.2	9.19	7.987		
2,300.0	2,295.5	2,295.0	2,284.4	5.1	5.6	-15.92	-162.4	-54.1	78.0	68.4	9.65	8.088		
2,400.0	2,395.0	2,394.9	2,383.3	5.3	5.9	-16.09	-175.9	-58.9	82.6	72.5	10.10	8.177		
2,500.0	2,494.5	2,494.8	2,482.1	5.6	6.2	-16.23	-189.4	-63.8	87.2	76.6	10.56	8.256		
2,600.0	2,594.0	2,594.7	2,581.0	5.9	6.6	-16.37	-202.9	-68.6	91.8	80.8	11.02	8.326		
2,700.0	2,693.5	2,694.6	2,679.8	6.1	6.9	-16.48	-216.5	-73.4	96.4	84.9	11.49	8.388		
2,800.0	2,793.0	2,794.5	2,778.7	6.4	7.2	-16.59	-230.0	-78.3	101.0	89.0	11.96	8.444		
2,900.0	2,892.5	2,894.4	2,877.5	6.7	7.6	-16.69	-243.5	-83.1	105.6	93.1	12.43	8.494		
3,000.0	2,992.0	2,994.3	2,976.4	7.0	7.9	-16.78	-257.0	-87.9	110.2	97.3	12.90	8.540		
3,100.0	3,091.5	3,094.2	3,075.3	7.3	8.3	-16.87	-270.6	-92.8	114.7	101.4	13.37	8.581		
3,200.0	3,191.0	3,194.1	3,174.1	7.5	8.6	-16.94	-284.1	-97.6	119.3	105.5	13.85	8.618		
3,300.0	3,290.5	3,293.9	3,273.0	7.8	9.0	-17.02	-297.6	-102.4	123.9	109.6	14.32	8.652		
3,400.0	3,390.0	3,393.8	3,371.8	8.1	9.3	-17.08	-311.2	-107.3	128.5	113.7	14.80	8.683		
3,500.0	3,489.5	3,493.7	3,470.7	8.4	9.7	-17.14	-324.7	-112.1	133.1	117.8	15.28	8.712		
3,600.0	3,589.0	3,593.6	3,569.5	8.7	10.0	-17.20	-338.2	-116.9	137.7	121.9	15.76	8.738		
3,700.0	3,688.5	3,693.5	3,668.4	9.0	10.4	-17.26	-351.7	-121.8	142.3	126.1	16.24	8.763		
3,800.0	3,788.0	3,793.4	3,767.2	9.3	10.7	-17.31	-365.3	-126.6	146.9	130.2	16.72	8.785		
3,900.0	3,887.5	3,893.3	3,866.1	9.6	11.1	-17.35	-378.8	-131.5	151.5	134.3	17.20	8.806		
4,000.0	3,987.0	3,993.2	3,965.0	9.8	11.4	-17.40	-392.3	-136.3	156.1	138.4	17.69	8.825		
4,100.0	4,086.5	4,093.1	4,063.8	10.1	11.8	-17.44	-405.8	-141.1	160.7	142.5	18.17	8.843		
4,200.0	4,186.0	4,193.0	4,162.7	10.4	12.1	-17.48	-419.4	-146.0	165.3	146.6	18.65	8.860		
4,300.0	4,285.5	4,292.9	4,261.5	10.7	12.5	-17.52	-432.9	-150.8	169.9	150.7	19.14	8.875		
4,400.0	4,385.0	4,392.8	4,360.4	11.0	12.8	-17.56	-446.4	-155.6	174.4	154.8	19.62	8.890		
4,500.0	4,484.5	4,492.7	4,459.2	11.3	13.2	-17.59	-459.9	-160.5	179.0	158.9	20.11	8.903		
4,600.0	4,584.0	4,592.6	4,558.1	11.6	13.5	-17.62	-473.5	-165.3	183.6	163.0	20.60	8.916		
4,700.0	4,683.5	4,692.5	4,657.0	11.9	13.9	-17.65	-487.0	-170.1	188.2	167.1	21.08	8.928		
4,800.0	4,783.0	4,792.4	4,755.8	12.2	14.2	-17.68	-500.5	-175.0	192.8	171.3	21.57	8.940		
4,900.0	4,882.5	4,892.3	4,854.7	12.5	14.6	-17.71	-514.1	-179.8	197.4	175.4	22.06	8.950		
5,000.0	4,982.0	4,992.2	4,953.5	12.8	14.9	-17.74	-527.6	-184.6	202.0	179.5	22.54	8.960		

CC - Min centre to center distance or convergent point, SF - min separation factor, ES - min ellipse separation

<b>Company:</b>	Synergy Resources	<b>Local Co-ordinate Reference:</b>	Well SRC Wiedeman A-5-4CHZ
<b>Project:</b>	Sec.5-T5N-R66W	<b>TVD Reference:</b>	WELL @ 4796.0ft (RKB - 13')
<b>Reference Site:</b>	SRC Wiedeman Pad Sec.5-T5N-R66W	<b>MD Reference:</b>	WELL @ 4796.0ft (RKB - 13')
<b>Site Error:</b>	0.0ft	<b>North Reference:</b>	True
<b>Reference Well:</b>	SRC Wiedeman A-5-4CHZ	<b>Survey Calculation Method:</b>	Minimum Curvature
<b>Well Error:</b>	0.0ft	<b>Output errors are at</b>	2.00 sigma
<b>Reference Wellbore</b>	Wellbore #1	<b>Database:</b>	Landmark
<b>Reference Design:</b>	Plan #1 (6-24-14)	<b>Offset TVD Reference:</b>	Offset Datum

Offset Design SRC Wiedeman Pad Sec.5-T5N-R66W - SRC Wiedeman 22-5-4NHZ - Wellbore #1 - Plan #1 (6-24-14)													Offset Site Error:	0.0 ft
Survey Program: 0-MWD													Offset Well Error:	0.0 ft
Reference		Offset		Semi Major Axis			Distance							Warning
Measured Depth (ft)	Vertical Depth (ft)	Measured Depth (ft)	Vertical Depth (ft)	Reference (ft)	Offset (ft)	Highside Toolface (°)	Offset Wellbore Centre +N/-S (ft)	+E/-W (ft)	Between Centres (ft)	Between Ellipses (ft)	Minimum Separation (ft)	Separation Factor		
5,100.0	5,081.5	5,092.0	5,052.4	13.1	15.3	-17.76	-541.1	-189.5	206.6	183.6	23.03	8.970		
5,200.0	5,181.0	5,191.9	5,151.2	13.3	15.7	-17.78	-554.6	-194.3	211.2	187.7	23.52	8.979		
5,300.0	5,280.5	5,291.8	5,250.1	13.6	16.0	-17.81	-568.2	-199.1	215.8	191.8	24.01	8.988		
5,400.0	5,380.0	5,391.7	5,348.9	13.9	16.4	-17.83	-581.7	-204.0	220.4	195.9	24.50	8.996		
5,500.0	5,479.5	5,491.6	5,447.8	14.2	16.7	-17.85	-595.2	-208.8	225.0	200.0	24.99	9.003		
5,600.0	5,579.0	5,591.5	5,546.7	14.5	17.1	-17.87	-608.7	-213.7	229.6	204.1	25.48	9.011		
5,700.0	5,678.5	5,691.4	5,645.5	14.8	17.4	-17.89	-622.3	-218.5	234.2	208.2	25.97	9.018		
5,800.0	5,778.0	5,796.3	5,749.5	15.1	17.8	-17.95	-635.9	-223.3	238.2	211.7	26.46	9.002		
5,900.0	5,877.5	5,905.2	5,857.7	15.4	18.0	-18.19	-646.5	-227.1	238.8	211.8	26.93	8.867		
6,000.0	5,977.0	6,013.9	5,966.2	15.7	18.2	-18.64	-653.2	-229.5	235.7	208.3	27.40	8.601		
6,037.1	6,013.9	6,054.2	6,006.4	15.8	18.3	-18.87	-654.7	-230.1	233.6	206.0	27.58	8.470		
6,100.0	6,076.5	6,122.3	6,074.5	16.0	18.4	-19.26	-656.0	-230.5	229.6	201.7	27.86	8.240		
6,200.0	6,176.3	6,224.1	6,176.3	16.2	18.5	-19.74	-656.1	-230.6	224.0	195.7	28.25	7.930		
6,300.0	6,276.3	6,324.1	6,276.3	16.3	18.6	-19.95	-656.1	-230.6	221.6	193.0	28.57	7.756		
6,323.7	6,300.0	6,347.8	6,300.0	16.4	18.7	-174.35	-656.1	-230.6	221.5	186.9	34.60	6.400		
6,400.0	6,376.3	6,425.5	6,377.7	16.5	18.8	-174.65	-656.1	-229.4	221.4	186.5	34.82	6.357		
6,500.0	6,476.3	6,527.2	6,478.5	16.7	18.9	-178.01	-655.9	-216.4	220.3	185.4	34.90	6.312		
6,530.5	6,506.8	6,557.3	6,507.9	16.7	18.9	-179.72	-655.8	-209.9	220.1	185.2	34.87	6.311		
6,549.6	6,525.8	6,575.9	6,525.8	16.7	18.9	90.00	-655.7	-205.2	220.0	190.2	29.87	7.367		
6,550.0	6,526.3	6,576.3	6,526.3	16.7	18.9	89.97	-655.7	-205.1	220.0	190.2	29.87	7.366		
6,600.0	6,576.2	6,624.5	6,572.2	16.8	18.9	86.97	-655.5	-190.8	220.4	190.1	30.25	7.285		
6,650.0	6,625.7	6,671.9	6,616.5	16.9	18.9	84.03	-655.3	-173.7	221.3	190.7	30.60	7.232		
6,700.0	6,674.7	6,718.7	6,658.9	16.9	19.0	81.15	-655.0	-154.1	222.8	191.9	30.92	7.206		
6,750.0	6,722.9	6,764.7	6,699.4	16.9	19.0	78.37	-654.6	-132.0	224.9	193.7	31.20	7.209		
6,800.0	6,770.0	6,810.2	6,737.8	17.0	19.0	75.71	-654.3	-107.8	227.4	196.0	31.41	7.240		
6,850.0	6,815.8	6,855.1	6,774.2	17.0	19.0	73.17	-653.9	-81.5	230.3	198.8	31.56	7.299		
6,900.0	6,860.1	6,900.0	6,808.9	17.0	19.0	70.75	-653.4	-53.0	233.6	201.9	31.64	7.381		
6,950.0	6,902.7	6,943.4	6,840.7	17.0	19.0	68.53	-653.0	-23.4	237.1	205.4	31.67	7.484		
7,000.0	6,943.4	6,986.9	6,870.6	17.0	19.0	66.43	-652.5	8.1	240.7	209.1	31.66	7.603		
7,050.0	6,981.9	7,030.0	6,898.3	17.1	19.0	64.49	-652.0	41.0	244.5	212.9	31.62	7.732		
7,100.0	7,018.1	7,072.6	6,923.8	17.1	19.0	62.70	-651.5	75.2	248.3	216.7	31.60	7.858		
7,150.0	7,051.9	7,114.9	6,947.0	17.1	19.0	61.06	-650.9	110.6	252.1	220.5	31.59	7.980		
7,200.0	7,083.0	7,156.9	6,967.9	17.1	19.1	59.58	-650.4	147.0	255.8	224.2	31.63	8.088		
7,250.0	7,111.2	7,200.0	6,987.1	17.2	19.2	58.20	-649.8	185.5	259.4	227.6	31.76	8.167		
7,300.0	7,136.6	7,240.1	7,002.9	17.3	19.3	57.04	-649.3	222.4	262.8	230.8	32.01	8.210		
7,350.0	7,158.8	7,281.4	7,016.9	17.6	19.5	55.98	-648.7	261.2	265.9	233.5	32.40	8.209		
7,400.0	7,177.9	7,322.4	7,028.7	18.2	19.9	55.05	-648.1	300.5	268.8	235.9	32.94	8.160		
7,450.0	7,193.7	7,363.2	7,038.1	18.9	20.3	54.25	-647.5	340.2	271.4	237.7	33.66	8.064		
7,500.0	7,206.2	7,400.0	7,044.6	19.6	20.8	53.62	-646.9	376.4	273.7	239.2	34.51	7.931		
7,550.0	7,215.2	7,444.5	7,050.0	20.4	21.5	53.03	-646.2	420.6	275.5	239.9	35.63	7.733		
7,600.0	7,220.8	7,485.0	7,052.6	21.3	22.2	52.60	-645.6	461.0	277.0	240.1	36.89	7.511		
7,650.0	7,223.0	7,529.2	7,053.0	22.3	23.1	52.31	-645.0	505.2	278.0	239.6	38.38	7.244		
7,655.5	7,223.0	7,534.7	7,053.0	22.4	23.2	52.31	-644.9	510.7	278.0	239.5	38.57	7.209		
7,700.0	7,223.0	7,579.2	7,053.0	23.3	24.0	52.30	-644.2	555.1	278.0	238.1	39.97	6.956		
7,800.0	7,223.0	7,679.2	7,053.0	25.4	26.1	52.30	-642.7	655.1	278.0	234.7	43.30	6.421		
7,900.0	7,223.0	7,779.2	7,053.0	27.6	28.3	52.30	-641.2	755.1	278.0	231.2	46.83	5.937		
8,000.0	7,223.0	7,879.2	7,053.0	29.9	30.6	52.30	-639.6	855.1	278.0	227.5	50.51	5.504		
8,100.0	7,223.0	7,979.2	7,053.0	32.3	32.9	52.30	-638.1	955.1	278.0	223.7	54.33	5.117		
8,200.0	7,223.0	8,079.2	7,053.0	34.7	35.4	52.30	-636.6	1,055.1	278.0	219.8	58.24	4.773		
8,300.0	7,223.0	8,179.2	7,053.0	37.2	37.9	52.30	-635.1	1,155.1	278.0	215.8	62.24	4.467		
8,400.0	7,223.0	8,279.2	7,053.0	39.8	40.4	52.30	-633.6	1,255.1	278.0	211.7	66.30	4.193		
8,500.0	7,223.0	8,379.2	7,053.0	42.3	43.0	52.30	-632.1	1,355.1	278.0	207.6	70.42	3.947		

CC - Min centre to center distance or convergent point, SF - min separation factor, ES - min ellipse separation

<b>Company:</b>	Synergy Resources	<b>Local Co-ordinate Reference:</b>	Well SRC Wiedeman A-5-4CHZ
<b>Project:</b>	Sec.5-T5N-R66W	<b>TVD Reference:</b>	WELL @ 4796.0ft (RKB - 13')
<b>Reference Site:</b>	SRC Wiedeman Pad Sec.5-T5N-R66W	<b>MD Reference:</b>	WELL @ 4796.0ft (RKB - 13')
<b>Site Error:</b>	0.0ft	<b>North Reference:</b>	True
<b>Reference Well:</b>	SRC Wiedeman A-5-4CHZ	<b>Survey Calculation Method:</b>	Minimum Curvature
<b>Well Error:</b>	0.0ft	<b>Output errors are at</b>	2.00 sigma
<b>Reference Wellbore</b>	Wellbore #1	<b>Database:</b>	Landmark
<b>Reference Design:</b>	Plan #1 (6-24-14)	<b>Offset TVD Reference:</b>	Offset Datum

Offset Design SRC Wiedeman Pad Sec.5-T5N-R66W - SRC Wiedeman 22-5-4NHZ - Wellbore #1 - Plan #1 (6-24-14)													Offset Site Error:	0.0 ft
Survey Program: 0-MWD													Offset Well Error:	0.0 ft
Reference		Offset		Semi Major Axis			Distance							
Measured Depth (ft)	Vertical Depth (ft)	Measured Depth (ft)	Vertical Depth (ft)	Reference (ft)	Offset (ft)	Highside Toolface (°)	Offset Wellbore Centre +N/-S (ft)	+E/-W (ft)	Between Centres (ft)	Between Ellipses (ft)	Minimum Separation (ft)	Separation Factor	Warning	
8,600.0	7,223.0	8,479.2	7,053.0	44.9	45.5	52.30	-630.5	1,455.0	278.0	203.4	74.59	3.727		
8,700.0	7,223.0	8,579.2	7,053.0	47.5	48.2	52.30	-629.0	1,555.0	278.0	199.2	78.80	3.528		
8,800.0	7,223.0	8,679.2	7,053.0	50.2	50.8	52.30	-627.5	1,655.0	278.0	194.9	83.04	3.348		
8,900.0	7,223.0	8,779.2	7,053.0	52.8	53.5	52.30	-626.0	1,755.0	278.0	190.7	87.30	3.184		
9,000.0	7,223.0	8,879.2	7,053.0	55.5	56.1	52.29	-624.5	1,855.0	278.0	186.4	91.59	3.035		
9,100.0	7,223.0	8,979.2	7,053.0	58.2	58.8	52.29	-622.9	1,955.0	278.0	182.0	95.91	2.898		
9,200.0	7,223.0	9,079.2	7,053.0	60.9	61.5	52.29	-621.4	2,055.0	277.9	177.7	100.24	2.773		
9,300.0	7,223.0	9,179.2	7,053.0	63.6	64.2	52.29	-619.9	2,155.0	277.9	173.4	104.58	2.658		
9,400.0	7,223.0	9,279.2	7,053.0	66.3	66.9	52.29	-618.4	2,255.0	277.9	169.0	108.95	2.551		
9,500.0	7,223.0	9,379.2	7,053.0	69.0	69.6	52.29	-616.9	2,354.9	277.9	164.6	113.32	2.453		
9,600.0	7,223.0	9,479.2	7,053.0	71.8	72.3	52.29	-615.3	2,454.9	277.9	160.2	117.70	2.361		
9,700.0	7,223.0	9,579.2	7,053.0	74.5	75.1	52.29	-613.8	2,554.9	277.9	155.8	122.10	2.276		
9,800.0	7,223.0	9,679.2	7,053.0	77.2	77.8	52.29	-612.3	2,654.9	277.9	151.4	126.50	2.197		
9,900.0	7,223.0	9,779.2	7,053.0	80.0	80.5	52.29	-610.8	2,754.9	277.9	147.0	130.91	2.123		
10,000.0	7,223.0	9,879.2	7,053.0	82.7	83.3	52.29	-609.3	2,854.9	277.9	142.6	135.33	2.054		
10,100.0	7,223.0	9,979.2	7,053.0	85.5	86.0	52.29	-607.8	2,954.9	277.9	138.1	139.75	1.988		
10,200.0	7,223.0	10,079.2	7,053.0	88.2	88.8	52.28	-606.2	3,054.9	277.9	133.7	144.19	1.927		
10,300.0	7,223.0	10,179.2	7,053.0	91.0	91.5	52.28	-604.7	3,154.8	277.9	129.3	148.62	1.870		
10,400.0	7,223.0	10,279.2	7,053.0	93.7	94.3	52.28	-603.2	3,254.8	277.9	124.8	153.06	1.816		
10,500.0	7,223.0	10,379.2	7,053.0	96.5	97.1	52.28	-601.7	3,354.8	277.9	120.4	157.51	1.764		
10,600.0	7,223.0	10,479.2	7,053.0	99.3	99.8	52.28	-600.2	3,454.8	277.9	115.9	161.96	1.716		
10,700.0	7,223.0	10,579.2	7,053.0	102.0	102.6	52.28	-598.6	3,554.8	277.9	111.5	166.41	1.670		
10,800.0	7,223.0	10,679.2	7,053.0	104.8	105.3	52.28	-597.1	3,654.8	277.9	107.0	170.86	1.626		
10,900.0	7,223.0	10,779.2	7,053.0	107.6	108.1	52.28	-595.6	3,754.8	277.9	102.5	175.32	1.585		
11,000.0	7,223.0	10,879.2	7,053.0	110.4	110.9	52.28	-594.1	3,854.8	277.9	98.1	179.79	1.545		
11,100.0	7,223.0	10,979.2	7,053.0	113.1	113.7	52.28	-592.6	3,954.8	277.8	93.6	184.25	1.508		
11,200.0	7,223.0	11,079.2	7,053.0	115.9	116.4	52.28	-591.1	4,054.7	277.8	89.1	188.72	1.472 Level 3		
11,300.0	7,223.0	11,179.2	7,053.0	118.7	119.2	52.28	-589.5	4,154.7	277.8	84.6	193.19	1.438 Level 3		
11,400.0	7,223.0	11,279.2	7,053.0	121.5	122.0	52.27	-588.0	4,254.7	277.8	80.2	197.66	1.406 Level 3		
11,500.0	7,223.0	11,379.2	7,053.0	124.2	124.8	52.27	-586.5	4,354.7	277.8	75.7	202.13	1.374 Level 3		
11,600.0	7,223.0	11,479.2	7,053.0	127.0	127.5	52.27	-585.0	4,454.7	277.8	71.2	206.61	1.345 Level 3		
11,700.0	7,223.0	11,579.2	7,053.0	129.8	130.3	52.27	-583.5	4,554.7	277.8	66.7	211.09	1.316 Level 3		
11,736.8	7,223.0	11,616.0	7,053.0	130.8	131.3	52.27	-582.9	4,591.5	277.8	65.1	212.74	1.306 Level 3		
11,764.6	7,223.0	11,621.6	7,053.0	131.6	131.5	52.27	-582.8	4,597.1	278.7	65.2	213.48	1.305 Level 3, SF		



<b>Company:</b>	Synergy Resources	<b>Local Co-ordinate Reference:</b>	Well SRC Wiedeman A-5-4CHZ
<b>Project:</b>	Sec.5-T5N-R66W	<b>TVD Reference:</b>	WELL @ 4796.0ft (RKB - 13')
<b>Reference Site:</b>	SRC Wiedeman Pad Sec.5-T5N-R66W	<b>MD Reference:</b>	WELL @ 4796.0ft (RKB - 13')
<b>Site Error:</b>	0.0ft	<b>North Reference:</b>	True
<b>Reference Well:</b>	SRC Wiedeman A-5-4CHZ	<b>Survey Calculation Method:</b>	Minimum Curvature
<b>Well Error:</b>	0.0ft	<b>Output errors are at</b>	2.00 sigma
<b>Reference Wellbore</b>	Wellbore #1	<b>Database:</b>	Landmark
<b>Reference Design:</b>	Plan #1 (6-24-14)	<b>Offset TVD Reference:</b>	Offset Datum

Offset Design SRC Wiedeman Pad Sec.5-T5N-R66W - SRC Wiedeman A-5-3CHZ - Wellbore #1 - Plan #1 (6-24-14)													Offset Site Error:	0.0 ft
Survey Program: 0-MWD													Offset Well Error:	0.0 ft
Reference		Offset		Semi Major Axis			Distance							Warning
Measured Depth (ft)	Vertical Depth (ft)	Measured Depth (ft)	Vertical Depth (ft)	Reference (ft)	Offset (ft)	Highside Toolface (°)	Offset Wellbore Centre +N/-S (ft)	+E/-W (ft)	Between Centres (ft)	Between Ellipses (ft)	Minimum Separation (ft)	Separation Factor		
0.0	0.0	0.0	0.0	0.0	0.0	5.85	29.9	3.1	30.0					
100.0	100.0	100.0	100.0	0.1	0.1	5.85	29.9	3.1	30.0	29.8	0.22	133.607		
200.0	200.0	200.0	200.0	0.3	0.3	5.85	29.9	3.1	30.0	29.4	0.67	44.536		
300.0	300.0	300.0	300.0	0.6	0.6	5.85	29.9	3.1	30.0	28.9	1.12	26.721		
400.0	400.0	400.0	400.0	0.8	0.8	5.85	29.9	3.1	30.0	28.5	1.57	19.087		
500.0	500.0	500.0	500.0	1.0	1.0	5.85	29.9	3.1	30.0	28.0	2.02	14.845		
600.0	600.0	600.0	600.0	1.2	1.2	5.85	29.9	3.1	30.0	27.6	2.47	12.146		
700.0	700.0	700.0	700.0	1.5	1.5	5.85	29.9	3.1	30.0	27.1	2.92	10.277		
800.0	800.0	800.0	800.0	1.7	1.7	5.85	29.9	3.1	30.0	26.7	3.37	8.907		
900.0	900.0	900.0	900.0	1.9	1.9	5.85	29.9	3.1	30.0	26.2	3.82	7.859		
1,000.0	1,000.0	1,000.0	1,000.0	2.1	2.1	5.85	29.9	3.1	30.0	25.8	4.27	7.032		
1,100.0	1,100.0	1,100.0	1,100.0	2.4	2.4	5.85	29.9	3.1	30.0	25.3	4.72	6.362		
1,200.0	1,200.0	1,200.0	1,200.0	2.6	2.6	5.85	29.9	3.1	30.0	24.9	5.17	5.809 CC, ES		
1,300.0	1,300.0	1,300.0	1,300.0	2.8	2.8	161.31	29.9	3.1	31.7	26.1	5.59	5.666		
1,400.0	1,399.8	1,399.8	1,399.8	3.0	3.0	163.90	29.9	3.1	36.7	30.7	5.99	6.126		
1,486.6	1,486.1	1,486.1	1,486.1	3.1	3.2	166.53	29.9	3.1	43.8	37.5	6.33	6.917		
1,500.0	1,499.5	1,499.5	1,499.5	3.2	3.3	166.93	29.9	3.1	45.1	38.7	6.38	7.062		
1,600.0	1,599.0	1,599.0	1,599.0	3.4	3.5	169.29	29.9	3.1	54.9	48.1	6.80	8.072		
1,700.0	1,698.5	1,698.5	1,698.5	3.6	3.7	170.93	29.9	3.1	64.7	57.5	7.21	8.969		
1,800.0	1,798.0	1,798.0	1,798.0	3.8	3.9	172.14	29.9	3.1	74.6	66.9	7.64	9.767		
1,900.0	1,897.5	1,897.5	1,897.5	4.0	4.2	173.07	29.9	3.1	84.5	76.4	8.06	10.480		
2,000.0	1,997.0	1,997.0	1,997.0	4.3	4.4	173.80	29.9	3.1	94.4	85.9	8.49	11.118		
2,100.0	2,096.5	2,096.5	2,096.5	4.5	4.6	173.54	30.8	1.8	104.8	95.9	8.92	11.748		
2,200.0	2,196.0	2,193.7	2,193.6	4.8	4.8	171.72	33.6	-2.3	116.1	106.8	9.35	12.424		
2,300.0	2,295.5	2,291.4	2,290.9	5.1	5.0	168.81	38.4	-9.1	128.7	118.9	9.79	13.154		
2,400.0	2,395.0	2,389.6	2,388.5	5.3	5.3	165.46	44.6	-18.0	142.6	132.4	10.24	13.927		
2,500.0	2,494.5	2,488.3	2,486.5	5.6	5.5	162.63	50.9	-27.0	157.0	146.3	10.71	14.665		
2,600.0	2,594.0	2,586.9	2,584.6	5.9	5.7	160.28	57.3	-36.1	171.7	160.5	11.18	15.359		
2,700.0	2,693.5	2,685.6	2,682.7	6.1	6.0	158.30	63.6	-45.2	186.6	175.0	11.66	16.010		
2,800.0	2,793.0	2,784.3	2,780.7	6.4	6.2	156.62	70.0	-54.2	201.8	189.6	12.14	16.617		
2,900.0	2,892.5	2,883.0	2,878.8	6.7	6.5	155.17	76.3	-63.3	217.0	204.4	12.63	17.184		
3,000.0	2,992.0	2,981.7	2,976.9	7.0	6.7	153.91	82.7	-72.3	232.4	219.3	13.12	17.713		
3,100.0	3,091.5	3,080.4	3,074.9	7.3	7.0	152.81	89.0	-81.4	247.9	234.3	13.62	18.206		
3,200.0	3,191.0	3,179.1	3,173.0	7.5	7.3	151.84	95.4	-90.5	263.4	249.3	14.11	18.667		
3,300.0	3,290.5	3,277.8	3,271.1	7.8	7.5	150.98	101.7	-99.5	279.1	264.5	14.61	19.098		
3,400.0	3,390.0	3,376.5	3,369.1	8.1	7.8	150.20	108.1	-108.6	294.7	279.6	15.11	19.501		
3,500.0	3,489.5	3,475.2	3,467.2	8.4	8.1	149.51	114.4	-117.7	310.5	294.8	15.62	19.879		
3,600.0	3,589.0	3,573.8	3,565.3	8.7	8.4	148.88	120.8	-126.7	326.2	310.1	16.12	20.233		
3,700.0	3,688.5	3,672.5	3,663.3	9.0	8.7	148.31	127.1	-135.8	342.0	325.4	16.63	20.566		
3,800.0	3,788.0	3,778.7	3,769.0	9.3	8.9	147.93	133.1	-144.4	357.0	339.9	17.10	20.878		
3,900.0	3,887.5	3,886.9	3,877.0	9.6	9.1	148.04	137.0	-149.9	369.5	352.0	17.55	21.061		
4,000.0	3,987.0	3,995.7	3,985.7	9.8	9.3	148.62	138.4	-152.0	379.6	361.6	17.98	21.116		
4,100.0	4,086.5	4,096.4	4,086.5	10.1	9.5	149.39	138.5	-152.0	388.2	369.8	18.40	21.094		
4,200.0	4,186.0	4,195.9	4,186.0	10.4	9.7	150.12	138.5	-152.0	396.8	378.0	18.85	21.052		
4,300.0	4,285.5	4,295.4	4,285.5	10.7	9.9	150.82	138.5	-152.0	405.5	386.2	19.30	21.014		
4,400.0	4,385.0	4,394.9	4,385.0	11.0	10.1	151.50	138.5	-152.0	414.3	394.6	19.75	20.981		
4,500.0	4,484.5	4,494.4	4,484.5	11.3	10.3	152.14	138.5	-152.0	423.1	402.9	20.19	20.953		
4,600.0	4,584.0	4,593.9	4,584.0	11.6	10.5	152.76	138.5	-152.0	432.0	411.3	20.64	20.928		
4,700.0	4,683.5	4,693.4	4,683.5	11.9	10.7	153.35	138.5	-152.0	440.9	419.8	21.09	20.907		
4,800.0	4,783.0	4,792.9	4,783.0	12.2	10.9	153.92	138.5	-152.0	449.9	428.3	21.54	20.888		
4,900.0	4,882.5	4,892.4	4,882.5	12.5	11.2	154.47	138.5	-152.0	458.9	436.9	21.98	20.873		
5,000.0	4,982.0	4,991.9	4,982.0	12.8	11.4	155.00	138.5	-152.0	467.9	445.5	22.43	20.859		

CC - Min centre to center distance or convergent point, SF - min separation factor, ES - min ellipse separation

<b>Company:</b>	Synergy Resources	<b>Local Co-ordinate Reference:</b>	Well SRC Wiedeman A-5-4CHZ
<b>Project:</b>	Sec.5-T5N-R66W	<b>TVD Reference:</b>	WELL @ 4796.0ft (RKB - 13')
<b>Reference Site:</b>	SRC Wiedeman Pad Sec.5-T5N-R66W	<b>MD Reference:</b>	WELL @ 4796.0ft (RKB - 13')
<b>Site Error:</b>	0.0ft	<b>North Reference:</b>	True
<b>Reference Well:</b>	SRC Wiedeman A-5-4CHZ	<b>Survey Calculation Method:</b>	Minimum Curvature
<b>Well Error:</b>	0.0ft	<b>Output errors are at</b>	2.00 sigma
<b>Reference Wellbore</b>	Wellbore #1	<b>Database:</b>	Landmark
<b>Reference Design:</b>	Plan #1 (6-24-14)	<b>Offset TVD Reference:</b>	Offset Datum

Offset Design SRC Wiedeman Pad Sec.5-T5N-R66W - SRC Wiedeman A-5-3CHZ - Wellbore #1 - Plan #1 (6-24-14)													Offset Site Error:	0.0 ft
Survey Program: 0-MWD													Offset Well Error:	0.0 ft
Reference		Offset		Semi Major Axis			Distance							Warning
Measured Depth (ft)	Vertical Depth (ft)	Measured Depth (ft)	Vertical Depth (ft)	Reference (ft)	Offset (ft)	Highside Toolface (°)	Offset Wellbore Centre +N/-S (ft)	+E/-W (ft)	Between Centres (ft)	Between Ellipses (ft)	Minimum Separation (ft)	Separation Factor		
5,100.0	5,081.5	5,091.4	5,081.5	13.1	11.6	155.50	138.5	-152.0	477.0	454.1	22.88	20.848		
5,200.0	5,181.0	5,190.9	5,181.0	13.3	11.8	155.99	138.5	-152.0	486.1	462.8	23.33	20.839		
5,300.0	5,280.5	5,290.4	5,280.5	13.6	12.0	156.46	138.5	-152.0	495.2	471.5	23.77	20.832		
5,400.0	5,380.0	5,389.9	5,380.0	13.9	12.2	156.91	138.5	-152.0	504.4	480.2	24.22	20.826		
5,500.0	5,479.5	5,489.4	5,479.5	14.2	12.4	157.35	138.5	-152.0	513.6	489.0	24.67	20.821		
5,600.0	5,579.0	5,588.9	5,579.0	14.5	12.6	157.77	138.5	-152.0	522.9	497.8	25.12	20.818		
5,700.0	5,678.5	5,688.4	5,678.5	14.8	12.9	158.18	138.5	-152.0	532.1	506.6	25.56	20.815		
5,800.0	5,778.0	5,787.9	5,778.0	15.1	13.1	158.57	138.5	-152.0	541.4	515.4	26.01	20.814		
5,900.0	5,877.5	5,887.4	5,877.5	15.4	13.3	158.95	138.5	-152.0	550.7	524.3	26.46	20.813		
6,000.0	5,977.0	5,986.9	5,977.0	15.7	13.5	159.32	138.5	-152.0	560.1	533.2	26.91	20.814		
6,037.1	6,013.9	6,023.8	6,013.9	15.8	13.6	159.45	138.5	-152.0	563.6	536.5	27.08	20.814		
6,100.0	6,076.5	6,086.5	6,076.5	16.0	13.7	159.69	138.5	-152.0	568.8	541.4	27.37	20.783		
6,200.0	6,176.3	6,186.3	6,176.3	16.2	13.9	159.93	138.5	-152.0	574.5	546.7	27.79	20.672		
6,300.0	6,276.3	6,286.3	6,276.3	16.3	14.2	160.04	138.5	-152.0	576.9	548.7	28.19	20.467		
6,323.7	6,300.0	6,310.0	6,300.0	16.4	14.2	5.64	138.5	-152.0	577.0	547.0	29.97	19.254		
6,400.0	6,376.3	6,386.3	6,376.3	16.5	14.4	5.64	138.5	-152.0	577.0	546.7	30.27	19.064		
6,500.0	6,476.3	6,486.3	6,476.3	16.7	14.6	5.64	138.5	-152.0	577.0	546.4	30.64	18.829		
6,530.5	6,506.8	6,516.8	6,506.8	16.7	14.7	5.64	138.5	-152.0	577.0	546.2	30.76	18.759		
6,550.0	6,526.3	6,534.7	6,524.8	16.7	14.7	-83.49	138.5	-151.8	577.0	547.8	29.18	19.771		
6,600.0	6,576.2	6,580.8	6,570.8	16.8	14.8	-83.52	138.5	-149.2	576.9	547.6	29.34	19.662		
6,650.0	6,625.7	6,626.9	6,616.5	16.9	14.8	-83.57	138.5	-143.6	576.8	547.4	29.48	19.566		
6,700.0	6,674.7	6,673.1	6,661.8	16.9	14.9	-83.66	138.6	-135.1	576.7	547.1	29.60	19.480		
6,750.0	6,722.9	6,719.2	6,706.6	16.9	15.0	-83.77	138.7	-123.6	576.5	546.8	29.72	19.400		
6,800.0	6,770.0	6,765.5	6,750.6	17.0	15.0	-83.91	138.8	-109.3	576.2	546.4	29.82	19.322		
6,850.0	6,815.8	6,811.8	6,793.6	17.0	15.1	-84.08	138.9	-92.1	575.9	546.0	29.93	19.240		
6,900.0	6,860.1	6,858.3	6,835.5	17.0	15.2	-84.27	139.1	-72.2	575.5	545.5	30.06	19.148		
6,950.0	6,902.7	6,904.8	6,876.1	17.0	15.2	-84.49	139.2	-49.5	575.2	544.9	30.21	19.038		
7,000.0	6,943.4	6,950.0	6,914.1	17.0	15.3	-84.73	139.4	-25.0	574.7	544.3	30.40	18.904		
7,050.0	6,981.9	6,998.3	6,952.8	17.1	15.5	-85.01	139.6	3.8	574.3	543.6	30.67	18.726		
7,100.0	7,018.1	7,045.2	6,988.6	17.1	15.6	-85.30	139.8	34.2	573.8	542.8	31.01	18.504		
7,150.0	7,051.9	7,092.3	7,022.4	17.1	15.8	-85.62	140.1	67.0	573.3	541.8	31.45	18.228		
7,200.0	7,083.0	7,139.6	7,054.1	17.1	16.1	-85.96	140.3	102.1	572.8	540.8	32.01	17.891		
7,250.0	7,111.2	7,187.1	7,083.5	17.2	16.4	-86.31	140.6	139.4	572.2	539.5	32.71	17.493		
7,300.0	7,136.6	7,234.8	7,110.5	17.3	16.8	-86.69	140.9	178.7	571.7	538.1	33.56	17.036		
7,350.0	7,158.8	7,282.7	7,134.9	17.6	17.3	-87.08	141.2	219.9	571.2	536.6	34.56	16.526		
7,400.0	7,177.9	7,330.9	7,156.6	18.2	17.9	-87.49	141.5	262.9	570.6	534.9	35.73	15.972		
7,450.0	7,193.7	7,379.3	7,175.4	18.9	18.5	-87.91	141.9	307.5	570.1	533.1	37.05	15.387		
7,500.0	7,206.2	7,427.9	7,191.3	19.6	19.2	-88.34	142.2	353.4	569.6	531.1	38.53	14.784		
7,550.0	7,215.2	7,476.8	7,204.1	20.4	20.0	-88.78	142.5	400.6	569.2	529.0	40.15	14.177		
7,600.0	7,220.8	7,526.0	7,213.7	21.3	20.8	-89.23	142.9	448.9	568.7	526.8	41.89	13.577		
7,650.0	7,223.0	7,575.4	7,219.9	22.3	21.7	-89.69	143.3	497.9	568.3	524.5	43.74	12.993		
7,655.5	7,223.0	7,580.9	7,220.4	22.4	21.8	-89.74	143.3	503.4	568.2	524.3	43.94	12.931		
7,700.0	7,223.0	7,625.3	7,222.8	23.3	22.7	-89.98	143.6	547.6	567.9	522.2	45.67	12.434		
7,800.0	7,223.0	7,725.2	7,223.0	25.4	24.7	-90.00	144.4	647.6	567.1	517.3	49.79	11.390		
7,900.0	7,223.0	7,825.2	7,223.0	27.6	26.8	-90.00	145.1	747.6	566.3	512.2	54.17	10.455		
8,000.0	7,223.0	7,925.2	7,223.0	29.9	29.1	-90.00	145.8	847.6	565.6	506.8	58.76	9.626		
8,100.0	7,223.0	8,025.2	7,223.0	32.3	31.5	-90.00	146.6	947.6	564.8	501.3	63.51	8.893		
8,200.0	7,223.0	8,125.2	7,223.0	34.7	33.9	-90.00	147.3	1,047.6	564.0	495.6	68.39	8.247		
8,300.0	7,223.0	8,225.2	7,223.0	37.2	36.4	-90.00	148.1	1,147.6	563.2	489.9	73.38	7.676		
8,400.0	7,223.0	8,325.2	7,223.0	39.8	38.9	-90.00	148.8	1,247.6	562.5	484.0	78.45	7.170		
8,500.0	7,223.0	8,425.2	7,223.0	42.3	41.5	-90.00	149.5	1,347.6	561.7	478.1	83.59	6.719		
8,600.0	7,223.0	8,525.2	7,223.0	44.9	44.0	-90.00	150.3	1,447.6	560.9	472.1	88.79	6.317		

CC - Min centre to center distance or convergent point, SF - min separation factor, ES - min ellipse separation



<b>Company:</b>	Synergy Resources	<b>Local Co-ordinate Reference:</b>	Well SRC Wiedeman A-5-4CHZ
<b>Project:</b>	Sec.5-T5N-R66W	<b>TVD Reference:</b>	WELL @ 4796.0ft (RKB - 13')
<b>Reference Site:</b>	SRC Wiedeman Pad Sec.5-T5N-R66W	<b>MD Reference:</b>	WELL @ 4796.0ft (RKB - 13')
<b>Site Error:</b>	0.0ft	<b>North Reference:</b>	True
<b>Reference Well:</b>	SRC Wiedeman A-5-4CHZ	<b>Survey Calculation Method:</b>	Minimum Curvature
<b>Well Error:</b>	0.0ft	<b>Output errors are at</b>	2.00 sigma
<b>Reference Wellbore</b>	Wellbore #1	<b>Database:</b>	Landmark
<b>Reference Design:</b>	Plan #1 (6-24-14)	<b>Offset TVD Reference:</b>	Offset Datum

Offset Design SRC Wiedeman Pad Sec.5-T5N-R66W - SRC Wiedeman A-5-3CHZ - Wellbore #1 - Plan #1 (6-24-14)													Offset Site Error:	0.0 ft
Survey Program: 0-MWD													Offset Well Error:	0.0 ft
Reference		Offset		Semi Major Axis			Distance							Warning
Measured Depth (ft)	Vertical Depth (ft)	Measured Depth (ft)	Vertical Depth (ft)	Reference (ft)	Offset (ft)	Highside Toolface (°)	Offset Wellbore Centre +N/-S (ft)	+E/-W (ft)	Between Centres (ft)	Between Ellipses (ft)	Minimum Separation (ft)	Separation Factor		
8,700.0	7,223.0	8,625.2	7,223.0	47.5	46.7	-90.00	151.0	1,547.6	560.1	466.1	94.04	5.957		
8,800.0	7,223.0	8,725.2	7,223.0	50.2	49.3	-90.00	151.7	1,647.6	559.4	460.0	99.32	5.632		
8,900.0	7,223.0	8,825.2	7,223.0	52.8	52.0	-90.00	152.5	1,747.6	558.6	453.9	104.64	5.338		
9,000.0	7,223.0	8,925.2	7,223.0	55.5	54.6	-90.00	153.2	1,847.5	557.8	447.8	109.99	5.071		
9,100.0	7,223.0	9,025.2	7,223.0	58.2	57.3	-90.00	154.0	1,947.5	557.0	441.7	115.37	4.828		
9,200.0	7,223.0	9,125.2	7,223.0	60.9	60.0	-90.00	154.7	2,047.5	556.3	435.5	120.76	4.606		
9,300.0	7,223.0	9,225.2	7,223.0	63.6	62.7	-90.00	155.4	2,147.5	555.5	429.3	126.18	4.402		
9,400.0	7,223.0	9,325.2	7,223.0	66.3	65.4	-90.00	156.2	2,247.5	554.7	423.1	131.61	4.215		
9,500.0	7,223.0	9,425.2	7,223.0	69.0	68.1	-90.00	156.9	2,347.5	553.9	416.9	137.05	4.042		
9,600.0	7,223.0	9,525.2	7,223.0	71.8	70.9	-90.00	157.6	2,447.5	553.2	410.7	142.51	3.882		
9,700.0	7,223.0	9,625.2	7,223.0	74.5	73.6	-90.00	158.4	2,547.5	552.4	404.4	147.98	3.733		
9,800.0	7,223.0	9,725.2	7,223.0	77.2	76.3	-90.00	159.1	2,647.5	551.6	398.2	153.46	3.594		
9,900.0	7,223.0	9,825.2	7,223.0	80.0	79.1	-90.00	159.9	2,747.5	550.8	391.9	158.95	3.465		
10,000.0	7,223.0	9,925.2	7,223.0	82.7	81.8	-90.00	160.6	2,847.5	550.1	385.6	164.45	3.345		
10,100.0	7,223.0	10,025.2	7,223.0	85.5	84.6	-90.00	161.3	2,947.5	549.3	379.3	169.96	3.232		
10,200.0	7,223.0	10,125.2	7,223.0	88.2	87.3	-90.00	162.1	3,047.5	548.5	373.1	175.47	3.126		
10,300.0	7,223.0	10,225.2	7,223.0	91.0	90.1	-90.00	162.8	3,147.5	547.8	366.8	180.99	3.026		
10,400.0	7,223.0	10,325.2	7,223.0	93.7	92.9	-90.00	163.5	3,247.5	547.0	360.5	186.51	2.933		
10,500.0	7,223.0	10,425.2	7,223.0	96.5	95.6	-90.00	164.3	3,347.5	546.2	354.2	192.04	2.844		
10,600.0	7,223.0	10,525.2	7,223.0	99.3	98.4	-90.00	165.0	3,447.5	545.4	347.9	197.57	2.761		
10,700.0	7,223.0	10,625.2	7,223.0	102.0	101.2	-90.00	165.8	3,547.4	544.7	341.5	203.11	2.682		
10,800.0	7,223.0	10,725.2	7,223.0	104.8	103.9	-90.00	166.5	3,647.4	543.9	335.2	208.65	2.607		
10,900.0	7,223.0	10,825.2	7,223.0	107.6	106.7	-90.00	167.2	3,747.4	543.1	328.9	214.20	2.536		
11,000.0	7,223.0	10,925.2	7,223.0	110.4	109.5	-90.00	168.0	3,847.4	542.3	322.6	219.75	2.468		
11,100.0	7,223.0	11,025.2	7,223.0	113.1	112.3	-90.00	168.7	3,947.4	541.6	316.3	225.30	2.404		
11,200.0	7,223.0	11,125.1	7,223.0	115.9	115.0	-90.00	169.5	4,047.4	540.8	309.9	230.86	2.343		
11,300.0	7,223.0	11,225.1	7,223.0	118.7	117.8	-90.00	170.2	4,147.4	540.0	303.6	236.41	2.284		
11,400.0	7,223.0	11,325.1	7,223.0	121.5	120.6	-90.00	170.9	4,247.4	539.2	297.3	241.97	2.228		
11,500.0	7,223.0	11,425.1	7,223.0	124.2	123.4	-90.00	171.7	4,347.4	538.5	290.9	247.54	2.175		
11,600.0	7,223.0	11,525.1	7,223.0	127.0	126.2	-90.00	172.4	4,447.4	537.7	284.6	253.10	2.124		
11,700.0	7,223.0	11,625.1	7,223.0	129.8	128.9	-90.00	173.1	4,547.4	536.9	278.2	258.67	2.076		
11,764.6	7,223.0	11,689.8	7,223.0	131.6	130.7	-90.00	173.6	4,612.0	536.4	274.1	262.27	2.045 SF		

<b>Company:</b>	Synergy Resources	<b>Local Co-ordinate Reference:</b>	Well SRC Wiedeman A-5-4CHZ
<b>Project:</b>	Sec.5-T5N-R66W	<b>TVD Reference:</b>	WELL @ 4796.0ft (RKB - 13')
<b>Reference Site:</b>	SRC Wiedeman Pad Sec.5-T5N-R66W	<b>MD Reference:</b>	WELL @ 4796.0ft (RKB - 13')
<b>Site Error:</b>	0.0ft	<b>North Reference:</b>	True
<b>Reference Well:</b>	SRC Wiedeman A-5-4CHZ	<b>Survey Calculation Method:</b>	Minimum Curvature
<b>Well Error:</b>	0.0ft	<b>Output errors are at</b>	2.00 sigma
<b>Reference Wellbore</b>	Wellbore #1	<b>Database:</b>	Landmark
<b>Reference Design:</b>	Plan #1 (6-24-14)	<b>Offset TVD Reference:</b>	Offset Datum

Offset Design SRC Wiedeman Pad Sec.5-T5N-R66W - SRC Wiedeman A-5-4NHZ - Wellbore #1 - Plan #1 (6-24-14)													Offset Site Error:	0.0ft
Survey Program: 0-MWD													Offset Well Error:	0.0ft
Reference		Offset		Semi Major Axis			Distance							Warning
Measured Depth (ft)	Vertical Depth (ft)	Measured Depth (ft)	Vertical Depth (ft)	Reference (ft)	Offset (ft)	Highside Toolface (°)	Offset Wellbore Centre +N/-S (ft)	+E/-W (ft)	Between Centres (ft)	Between Ellipses (ft)	Minimum Separation (ft)	Separation Factor		
0.0	0.0	0.0	0.0	0.0	0.0	5.32	14.9	1.4	15.0	15.0	0.00	N/A		
100.0	100.0	100.0	100.0	0.1	0.1	5.32	14.9	1.4	15.0	14.8	0.22	66.743		
200.0	200.0	200.0	200.0	0.3	0.3	5.32	14.9	1.4	15.0	14.3	0.67	22.248		
300.0	300.0	300.0	300.0	0.6	0.6	5.32	14.9	1.4	15.0	13.9	1.12	13.349		
400.0	400.0	400.0	400.0	0.8	0.8	5.32	14.9	1.4	15.0	13.4	1.57	9.535		
500.0	500.0	500.0	500.0	1.0	1.0	5.32	14.9	1.4	15.0	13.0	2.02	7.416		
600.0	600.0	600.0	600.0	1.2	1.2	5.32	14.9	1.4	15.0	12.5	2.47	6.068		
700.0	700.0	700.0	700.0	1.5	1.5	5.32	14.9	1.4	15.0	12.1	2.92	5.134		
800.0	800.0	800.0	800.0	1.7	1.7	5.32	14.9	1.4	15.0	11.6	3.37	4.450		
900.0	900.0	900.0	900.0	1.9	1.9	5.32	14.9	1.4	15.0	11.2	3.82	3.926		
1,000.0	1,000.0	1,000.0	1,000.0	2.1	2.1	5.32	14.9	1.4	15.0	10.7	4.27	3.513		
1,100.0	1,100.0	1,100.0	1,100.0	2.4	2.4	5.32	14.9	1.4	15.0	10.3	4.72	3.178		
1,200.0	1,200.0	1,200.0	1,200.0	2.6	2.6	5.32	14.9	1.4	15.0	9.8	5.17	2.902 CC, ES		
1,300.0	1,300.0	1,300.0	1,300.0	2.8	2.8	161.79	14.9	1.4	16.6	11.1	5.59	2.978		
1,400.0	1,399.8	1,399.8	1,399.8	3.0	3.0	166.09	14.9	1.4	21.7	15.7	5.99	3.622		
1,486.6	1,486.1	1,486.9	1,486.9	3.1	3.2	168.49	13.9	0.6	27.7	21.4	6.31	4.389		
1,500.0	1,499.5	1,500.4	1,500.4	3.2	3.2	168.65	13.6	0.3	28.6	22.2	6.36	4.497		
1,600.0	1,599.0	1,601.3	1,601.1	3.4	3.4	168.20	9.5	-3.1	33.6	26.9	6.73	5.000		
1,700.0	1,698.5	1,702.1	1,701.5	3.6	3.6	165.44	2.7	-8.6	35.6	28.5	7.11	5.004		
1,800.0	1,798.0	1,802.1	1,801.0	3.8	3.8	162.10	-4.9	-14.9	36.7	29.2	7.52	4.881		
1,900.0	1,897.5	1,902.0	1,900.5	4.0	4.0	158.97	-12.5	-21.1	37.9	30.0	7.94	4.776		
2,000.0	1,997.0	2,002.0	2,000.0	4.3	4.3	156.04	-20.1	-27.3	39.2	30.8	8.37	4.686		
2,100.0	2,096.5	2,102.0	2,099.5	4.5	4.5	153.31	-27.7	-33.5	40.6	31.8	8.82	4.608		
2,200.0	2,196.0	2,201.9	2,199.0	4.8	4.7	150.76	-35.3	-39.7	42.1	32.8	9.28	4.541		
2,300.0	2,295.5	2,301.9	2,298.5	5.1	5.0	148.39	-42.8	-45.9	43.7	33.9	9.75	4.482		
2,400.0	2,395.0	2,401.9	2,398.0	5.3	5.2	146.19	-50.4	-52.1	45.3	35.1	10.23	4.430		
2,500.0	2,494.5	2,501.9	2,497.5	5.6	5.5	144.15	-58.0	-58.3	47.0	36.3	10.73	4.384		
2,600.0	2,594.0	2,601.8	2,596.9	5.9	5.8	142.25	-65.6	-64.6	48.8	37.6	11.23	4.344		
2,700.0	2,693.5	2,701.8	2,696.4	6.1	6.0	140.49	-73.2	-70.8	50.6	38.9	11.75	4.308		
2,800.0	2,793.0	2,801.8	2,795.9	6.4	6.3	138.85	-80.8	-77.0	52.5	40.2	12.27	4.275		
2,900.0	2,892.5	2,901.7	2,895.4	6.7	6.6	137.32	-88.4	-83.2	54.4	41.6	12.80	4.247		
3,000.0	2,992.0	3,001.7	2,994.9	7.0	6.8	135.90	-96.0	-89.4	56.3	42.9	13.33	4.221		
3,100.0	3,091.5	3,101.7	3,094.4	7.3	7.1	134.57	-103.5	-95.6	58.2	44.4	13.87	4.198		
3,200.0	3,191.0	3,201.7	3,193.9	7.5	7.4	133.33	-111.1	-101.8	60.2	45.8	14.42	4.178		
3,300.0	3,290.5	3,301.6	3,293.4	7.8	7.7	132.16	-118.7	-108.0	62.3	47.3	14.97	4.159		
3,400.0	3,390.0	3,401.6	3,392.9	8.1	7.9	131.08	-126.3	-114.3	64.3	48.8	15.52	4.142		
3,500.0	3,489.5	3,501.6	3,492.3	8.4	8.2	130.06	-133.9	-120.5	66.4	50.3	16.08	4.127		
3,600.0	3,589.0	3,601.6	3,591.8	8.7	8.5	129.10	-141.5	-126.7	68.4	51.8	16.64	4.113		
3,700.0	3,688.5	3,701.5	3,691.3	9.0	8.8	128.19	-149.1	-132.9	70.5	53.3	17.20	4.101		
3,800.0	3,788.0	3,801.5	3,790.8	9.3	9.1	127.34	-156.7	-139.1	72.7	54.9	17.77	4.089		
3,900.0	3,887.5	3,901.5	3,890.3	9.6	9.3	126.54	-164.3	-145.3	74.8	56.5	18.34	4.079		
4,000.0	3,987.0	4,001.4	3,989.8	9.8	9.6	125.79	-171.8	-151.5	76.9	58.0	18.91	4.070		
4,100.0	4,086.5	4,101.4	4,089.3	10.1	9.9	125.07	-179.4	-157.7	79.1	59.6	19.48	4.061		
4,200.0	4,186.0	4,201.4	4,188.8	10.4	10.2	124.39	-187.0	-164.0	81.3	61.2	20.05	4.053		
4,300.0	4,285.5	4,301.4	4,288.3	10.7	10.5	123.75	-194.6	-170.2	83.5	62.8	20.62	4.046		
4,400.0	4,385.0	4,401.3	4,387.8	11.0	10.8	123.14	-202.2	-176.4	85.6	64.4	21.20	4.040		
4,500.0	4,484.5	4,500.6	4,486.6	11.3	11.0	123.06	-209.1	-182.0	88.1	66.4	21.73	4.055		
4,600.0	4,584.0	4,600.0	4,585.9	11.6	11.2	124.92	-213.5	-185.6	91.7	69.6	22.13	4.144		
4,700.0	4,683.5	4,697.9	4,683.7	11.9	11.4	128.44	-215.2	-187.1	96.8	74.4	22.43	4.316		
4,800.0	4,783.0	4,797.1	4,783.0	12.2	11.6	132.74	-215.3	-187.1	103.3	80.6	22.67	4.556		
4,900.0	4,882.5	4,896.6	4,882.5	12.5	11.8	136.54	-215.3	-187.1	110.4	87.4	22.93	4.813		
5,000.0	4,982.0	4,996.1	4,982.0	12.8	11.9	139.88	-215.3	-187.1	117.8	94.6	23.19	5.080		

CC - Min centre to center distance or convergent point, SF - min separation factor, ES - min ellipse separation

<b>Company:</b>	Synergy Resources	<b>Local Co-ordinate Reference:</b>	Well SRC Wiedeman A-5-4CHZ
<b>Project:</b>	Sec.5-T5N-R66W	<b>TVD Reference:</b>	WELL @ 4796.0ft (RKB - 13')
<b>Reference Site:</b>	SRC Wiedeman Pad Sec.5-T5N-R66W	<b>MD Reference:</b>	WELL @ 4796.0ft (RKB - 13')
<b>Site Error:</b>	0.0ft	<b>North Reference:</b>	True
<b>Reference Well:</b>	SRC Wiedeman A-5-4CHZ	<b>Survey Calculation Method:</b>	Minimum Curvature
<b>Well Error:</b>	0.0ft	<b>Output errors are at</b>	2.00 sigma
<b>Reference Wellbore</b>	Wellbore #1	<b>Database:</b>	Landmark
<b>Reference Design:</b>	Plan #1 (6-24-14)	<b>Offset TVD Reference:</b>	Offset Datum

Offset Design												Offset Site Error:	0.0 ft
Survey Program: 0-MWD												Offset Well Error:	0.0 ft
Reference		Offset		Semi Major Axis			Distance						
Measured Depth (ft)	Vertical Depth (ft)	Measured Depth (ft)	Vertical Depth (ft)	Reference (ft)	Offset (ft)	Highside Toolface (°)	Offset Wellbore Centre +N/-S (ft)	+E/-W (ft)	Between Centres (ft)	Between Ellipses (ft)	Minimum Separation (ft)	Separation Factor	Warning
5,100.0	5,081.5	5,095.6	5,081.5	13.1	12.1	142.81	-215.3	-187.1	125.6	102.2	23.48	5.351	
5,200.0	5,181.0	5,195.1	5,181.0	13.3	12.3	145.39	-215.3	-187.1	133.7	110.0	23.78	5.624	
5,300.0	5,280.5	5,294.6	5,280.5	13.6	12.5	147.68	-215.3	-187.1	142.1	118.0	24.10	5.896	
5,400.0	5,380.0	5,394.1	5,380.0	13.9	12.6	149.71	-215.3	-187.1	150.6	126.2	24.43	6.166	
5,500.0	5,479.5	5,493.6	5,479.5	14.2	12.8	151.52	-215.3	-187.1	159.4	134.6	24.78	6.432	
5,600.0	5,579.0	5,593.1	5,579.0	14.5	13.0	153.14	-215.3	-187.1	168.2	143.1	25.13	6.693	
5,700.0	5,678.5	5,692.6	5,678.5	14.8	13.2	154.60	-215.3	-187.1	177.2	151.7	25.50	6.949	
5,800.0	5,778.0	5,792.1	5,778.0	15.1	13.4	155.91	-215.3	-187.1	186.3	160.4	25.87	7.200	
5,900.0	5,877.5	5,891.6	5,877.5	15.4	13.6	157.11	-215.3	-187.1	195.4	169.2	26.25	7.445	
6,000.0	5,977.0	5,991.1	5,977.0	15.7	13.8	158.20	-215.3	-187.1	204.7	178.0	26.64	7.683	
6,037.1	6,013.9	6,028.0	6,013.9	15.8	13.8	158.57	-215.3	-187.1	208.1	181.3	26.79	7.770	
6,100.0	6,076.5	6,090.7	6,076.5	16.0	13.9	159.16	-215.3	-187.1	213.3	186.3	27.03	7.893	
6,200.0	6,176.3	6,190.5	6,176.3	16.2	14.1	159.76	-215.3	-187.1	219.0	191.6	27.40	7.995	
6,300.0	6,276.3	6,290.5	6,276.3	16.3	14.3	160.01	-215.3	-187.1	221.4	193.7	27.75	7.980	
6,323.7	6,300.0	6,314.2	6,300.0	16.4	14.4	5.62	-215.3	-187.1	221.5	191.3	30.19	7.338	
6,348.3	6,324.6	6,338.8	6,324.6	16.4	14.4	5.62	-215.3	-187.1	221.5	191.3	30.28	7.316	
6,400.0	6,376.3	6,389.1	6,374.9	16.5	14.5	5.88	-215.2	-186.1	221.7	191.2	30.47	7.274	
6,500.0	6,476.3	6,484.2	6,469.3	16.7	14.7	8.77	-215.1	-174.7	223.4	192.5	30.90	7.228	
6,530.5	6,506.8	6,512.4	6,496.9	16.7	14.7	10.23	-215.0	-169.0	224.5	193.5	31.05	7.232	
6,550.0	6,526.3	6,530.3	6,514.2	16.7	14.7	-77.85	-214.9	-164.8	225.4	197.0	28.37	7.946	
6,600.0	6,576.2	6,575.7	6,557.8	16.8	14.7	-75.21	-214.7	-152.1	228.0	199.6	28.40	8.029	
6,650.0	6,625.7	6,620.5	6,600.0	16.9	14.8	-72.70	-214.5	-137.0	231.0	202.6	28.43	8.126	
6,700.0	6,674.7	6,664.8	6,640.6	16.9	14.8	-70.33	-214.2	-119.4	234.3	205.9	28.45	8.237	
6,750.0	6,722.9	6,708.6	6,679.7	16.9	14.9	-68.11	-213.9	-99.7	237.8	209.4	28.46	8.358	
6,800.0	6,770.0	6,750.0	6,715.5	17.0	14.9	-66.12	-213.6	-78.8	241.5	213.1	28.45	8.490	
6,850.0	6,815.8	6,794.9	6,752.9	17.0	14.9	-64.14	-213.2	-53.9	245.3	216.9	28.44	8.625	
6,900.0	6,860.1	6,837.5	6,786.8	17.0	14.9	-62.38	-212.9	-28.1	249.2	220.7	28.43	8.765	
6,950.0	6,902.7	6,879.8	6,818.8	17.0	15.0	-60.77	-212.4	-0.6	252.9	224.5	28.41	8.904	
7,000.0	6,943.4	6,921.7	6,849.0	17.0	15.0	-59.31	-212.0	28.5	256.6	228.2	28.39	9.039	
7,050.0	6,981.9	6,963.4	6,877.3	17.1	15.1	-58.00	-211.5	59.1	260.2	231.8	28.39	9.163	
7,100.0	7,018.1	7,004.8	6,903.5	17.1	15.3	-56.83	-211.1	91.2	263.5	235.1	28.42	9.271	
7,150.0	7,051.9	7,050.0	6,930.0	17.1	15.7	-55.72	-210.5	127.8	266.6	238.1	28.51	9.352	
7,200.0	7,083.0	7,087.0	6,949.9	17.1	16.0	-54.90	-210.0	158.9	269.4	240.8	28.64	9.407	
7,250.0	7,111.2	7,127.8	6,970.0	17.2	16.4	-54.12	-209.5	194.5	271.9	243.1	28.87	9.420	
7,300.0	7,136.6	7,168.5	6,988.0	17.3	16.9	-53.48	-208.9	230.9	274.1	244.9	29.20	9.389	
7,350.0	7,158.8	7,209.1	7,003.8	17.6	17.4	-52.95	-208.4	268.3	275.9	246.3	29.63	9.312	
7,400.0	7,177.9	7,250.0	7,017.6	18.2	18.0	-52.54	-207.8	306.8	277.4	247.2	30.20	9.185	
7,450.0	7,193.7	7,289.9	7,029.0	18.9	18.6	-52.26	-207.2	345.1	278.4	247.5	30.90	9.010	
7,500.0	7,206.2	7,330.3	7,038.2	19.6	19.3	-52.08	-206.6	384.4	279.0	247.3	31.74	8.790	
7,550.0	7,215.2	7,370.6	7,045.3	20.4	20.0	-52.02	-206.0	424.1	279.2	246.5	32.73	8.533	
7,600.0	7,220.8	7,410.9	7,050.0	21.3	20.8	-52.08	-205.4	464.1	279.0	245.2	33.85	8.244	
7,650.0	7,223.0	7,450.0	7,052.5	22.3	21.5	-52.24	-204.8	503.1	278.4	243.3	35.08	7.936	
7,655.5	7,223.0	7,455.8	7,052.7	22.4	21.6	-52.27	-204.7	508.8	278.3	243.1	35.25	7.895	
7,689.4	7,223.0	7,484.8	7,053.0	23.1	22.2	-52.32	-204.3	537.9	278.1	241.9	36.26	7.671	
7,700.0	7,223.0	7,495.4	7,053.0	23.3	22.4	-52.32	-204.1	548.5	278.1	241.5	36.59	7.601	
7,800.0	7,223.0	7,595.4	7,053.0	25.4	24.5	-52.32	-202.6	648.5	278.1	238.2	39.91	6.968	
7,900.0	7,223.0	7,695.4	7,053.0	27.6	26.8	-52.32	-201.1	748.5	278.1	234.7	43.46	6.400	
8,000.0	7,223.0	7,795.4	7,053.0	29.9	29.1	-52.32	-199.6	848.4	278.1	230.9	47.17	5.896	
8,100.0	7,223.0	7,895.4	7,053.0	32.3	31.5	-52.32	-198.1	948.4	278.1	227.1	51.02	5.451	
8,200.0	7,223.0	7,995.4	7,053.0	34.7	34.0	-52.32	-196.6	1,048.4	278.1	223.1	54.97	5.059	
8,300.0	7,223.0	8,095.4	7,053.0	37.2	36.5	-52.32	-195.1	1,148.4	278.1	219.1	59.01	4.713	
8,400.0	7,223.0	8,195.4	7,053.0	39.8	39.0	-52.32	-193.6	1,248.4	278.1	215.0	63.11	4.407	

CC - Min centre to center distance or convergent point, SF - min separation factor, ES - min ellipse separation

<b>Company:</b>	Synergy Resources	<b>Local Co-ordinate Reference:</b>	Well SRC Wiedeman A-5-4CHZ
<b>Project:</b>	Sec.5-T5N-R66W	<b>TVD Reference:</b>	WELL @ 4796.0ft (RKB - 13')
<b>Reference Site:</b>	SRC Wiedeman Pad Sec.5-T5N-R66W	<b>MD Reference:</b>	WELL @ 4796.0ft (RKB - 13')
<b>Site Error:</b>	0.0ft	<b>North Reference:</b>	True
<b>Reference Well:</b>	SRC Wiedeman A-5-4CHZ	<b>Survey Calculation Method:</b>	Minimum Curvature
<b>Well Error:</b>	0.0ft	<b>Output errors are at</b>	2.00 sigma
<b>Reference Wellbore</b>	Wellbore #1	<b>Database:</b>	Landmark
<b>Reference Design:</b>	Plan #1 (6-24-14)	<b>Offset TVD Reference:</b>	Offset Datum

Offset Design		SRC Wiedeman Pad Sec.5-T5N-R66W - SRC Wiedeman A-5-4NHZ - Wellbore #1 - Plan #1 (6-24-14)										Offset Site Error:		0.0 ft
Survey Program: 0-MWD												Offset Well Error:		0.0 ft
Reference		Offset		Semi Major Axis			Distance							Warning
Measured Depth	Vertical Depth	Measured Depth	Vertical Depth	Reference	Offset	Highside Toolface	Offset Wellbore Centre	Between Centres	Between Ellipses	Minimum Separation	Separation Factor			
(ft)	(ft)	(ft)	(ft)	(ft)	(ft)	(°)	+N/-S (ft)	+E/-W (ft)	(ft)	(ft)	(ft)			
8,500.0	7,223.0	8,295.4	7,053.0	42.3	41.6	-52.32	-192.0	1,348.4	278.1	210.8	67.27	4.134		
8,600.0	7,223.0	8,395.4	7,053.0	44.9	44.2	-52.32	-190.5	1,448.4	278.1	206.6	71.48	3.891		
8,700.0	7,223.0	8,495.4	7,053.0	47.5	46.9	-52.32	-189.0	1,548.4	278.1	202.4	75.72	3.673		
8,800.0	7,223.0	8,595.4	7,053.0	50.2	49.5	-52.32	-187.5	1,648.4	278.1	198.1	80.00	3.477		
8,900.0	7,223.0	8,695.4	7,053.0	52.8	52.2	-52.32	-186.0	1,748.3	278.1	193.8	84.30	3.299		
9,000.0	7,223.0	8,795.4	7,053.0	55.5	54.9	-52.32	-184.5	1,848.3	278.1	189.5	88.63	3.138		
9,100.0	7,223.0	8,895.4	7,053.0	58.2	57.6	-52.32	-183.0	1,948.3	278.1	185.1	92.97	2.991		
9,200.0	7,223.0	8,995.4	7,053.0	60.9	60.3	-52.32	-181.5	2,048.3	278.1	180.8	97.34	2.857		
9,300.0	7,223.0	9,095.4	7,053.0	63.6	63.0	-52.32	-180.0	2,148.3	278.1	176.4	101.72	2.734		
9,400.0	7,223.0	9,195.4	7,053.0	66.3	65.7	-52.32	-178.4	2,248.3	278.1	172.0	106.11	2.621		
9,500.0	7,223.0	9,295.4	7,053.0	69.0	68.4	-52.32	-176.9	2,348.3	278.1	167.6	110.51	2.517		
9,600.0	7,223.0	9,395.4	7,053.0	71.8	71.2	-52.32	-175.4	2,448.3	278.1	163.2	114.93	2.420		
9,700.0	7,223.0	9,495.4	7,053.0	74.5	73.9	-52.32	-173.9	2,548.3	278.1	158.8	119.35	2.330		
9,800.0	7,223.0	9,595.4	7,053.0	77.2	76.7	-52.32	-172.4	2,648.2	278.1	154.3	123.78	2.247		
9,900.0	7,223.0	9,695.4	7,053.0	80.0	79.4	-52.32	-170.9	2,748.2	278.1	149.9	128.22	2.169		
10,000.0	7,223.0	9,795.4	7,053.0	82.7	82.2	-52.32	-169.4	2,848.2	278.1	145.4	132.67	2.096		
10,100.0	7,223.0	9,895.4	7,053.0	85.5	84.9	-52.32	-167.9	2,948.2	278.1	141.0	137.12	2.028		
10,200.0	7,223.0	9,995.4	7,053.0	88.2	87.7	-52.32	-166.4	3,048.2	278.1	136.5	141.57	1.964		
10,300.0	7,223.0	10,095.4	7,053.0	91.0	90.4	-52.32	-164.8	3,148.2	278.1	132.1	146.04	1.904		
10,400.0	7,223.0	10,195.4	7,053.0	93.7	93.2	-52.32	-163.3	3,248.2	278.1	127.6	150.50	1.848		
10,500.0	7,223.0	10,295.4	7,053.0	96.5	96.0	-52.32	-161.8	3,348.2	278.1	123.1	154.97	1.795		
10,600.0	7,223.0	10,395.4	7,053.0	99.3	98.7	-52.32	-160.3	3,448.1	278.1	118.7	159.45	1.744		
10,700.0	7,223.0	10,495.4	7,053.0	102.0	101.5	-52.32	-158.8	3,548.1	278.1	114.2	163.92	1.697		
10,800.0	7,223.0	10,595.4	7,053.0	104.8	104.3	-52.32	-157.3	3,648.1	278.1	109.7	168.40	1.651		
10,900.0	7,223.0	10,695.4	7,053.0	107.6	107.1	-52.32	-155.8	3,748.1	278.1	105.2	172.89	1.609		
11,000.0	7,223.0	10,795.4	7,053.0	110.4	109.8	-52.32	-154.3	3,848.1	278.1	100.7	177.37	1.568		
11,100.0	7,223.0	10,895.4	7,053.0	113.1	112.6	-52.32	-152.7	3,948.1	278.1	96.3	181.86	1.529		
11,200.0	7,223.0	10,995.4	7,053.0	115.9	115.4	-52.32	-151.2	4,048.1	278.1	91.8	186.35	1.492 Level 3		
11,300.0	7,223.0	11,095.4	7,053.0	118.7	118.2	-52.32	-149.7	4,148.1	278.1	87.3	190.85	1.457 Level 3		
11,400.0	7,223.0	11,195.4	7,053.0	121.5	120.9	-52.32	-148.2	4,248.1	278.1	82.8	195.34	1.424 Level 3		
11,500.0	7,223.0	11,295.4	7,053.0	124.2	123.7	-52.32	-146.7	4,348.0	278.1	78.3	199.84	1.392 Level 3		
11,600.0	7,223.0	11,395.4	7,053.0	127.0	126.5	-52.32	-145.2	4,448.0	278.1	73.8	204.34	1.361 Level 3		
11,700.0	7,223.0	11,495.4	7,053.0	129.8	129.3	-52.32	-143.7	4,548.0	278.1	69.3	208.84	1.332 Level 3		
11,764.6	7,223.0	11,560.1	7,053.0	131.6	131.1	-52.32	-142.7	4,612.6	278.1	66.4	211.75	1.313 Level 3, SF		

<b>Company:</b>	Synergy Resources	<b>Local Co-ordinate Reference:</b>	Well SRC Wiedeman A-5-4CHZ
<b>Project:</b>	Sec.5-T5N-R66W	<b>TVD Reference:</b>	WELL @ 4796.0ft (RKB - 13')
<b>Reference Site:</b>	SRC Wiedeman Pad Sec.5-T5N-R66W	<b>MD Reference:</b>	WELL @ 4796.0ft (RKB - 13')
<b>Site Error:</b>	0.0ft	<b>North Reference:</b>	True
<b>Reference Well:</b>	SRC Wiedeman A-5-4CHZ	<b>Survey Calculation Method:</b>	Minimum Curvature
<b>Well Error:</b>	0.0ft	<b>Output errors are at</b>	2.00 sigma
<b>Reference Wellbore</b>	Wellbore #1	<b>Database:</b>	Landmark
<b>Reference Design:</b>	Plan #1 (6-24-14)	<b>Offset TVD Reference:</b>	Offset Datum

Reference Depths are relative to WELL @ 4796.0ft (RKB - 13')

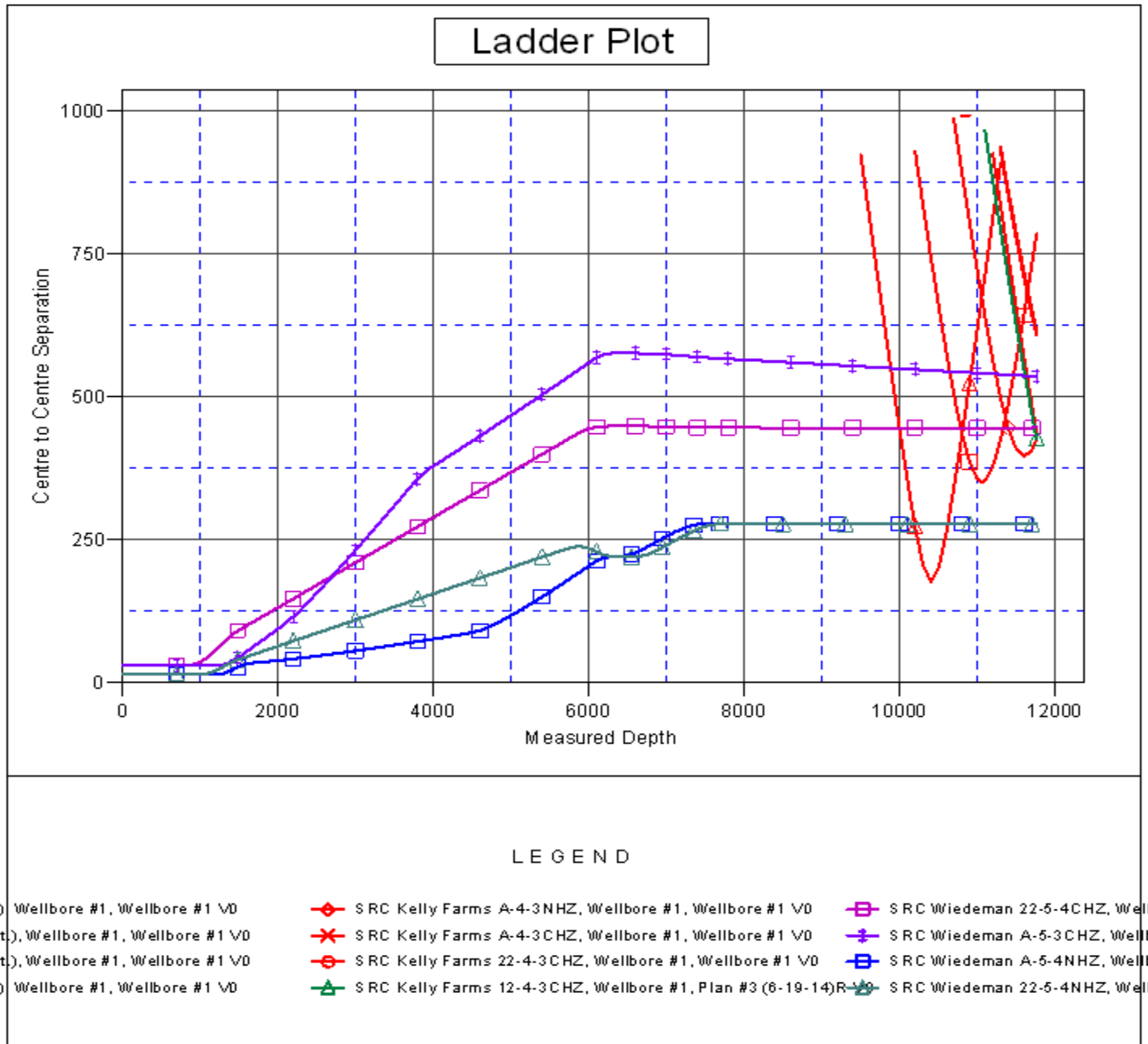
Offset Depths are relative to Offset Datum

Central Meridian is -105.500000 °

Coordinates are relative to: SRC Wiedeman A-5-4CHZ

Coordinate System is US State Plane 1983, Colorado Northern Zone

Grid Convergence at Surface is: 0.45°



**Company:** Synergy Resources  
**Project:** Sec.5-T5N-R66W  
**Reference Site:** SRC Wiedeman Pad Sec.5-T5N-R66W  
**Site Error:** 0.0ft  
**Reference Well:** SRC Wiedeman A-5-4CHZ  
**Well Error:** 0.0ft  
**Reference Wellbore** Wellbore #1  
**Reference Design:** Plan #1 (6-24-14)

**Local Co-ordinate Reference:** Well SRC Wiedeman A-5-4CHZ  
**TVD Reference:** WELL @ 4796.0ft (RKB - 13')  
**MD Reference:** WELL @ 4796.0ft (RKB - 13')  
**North Reference:** True  
**Survey Calculation Method:** Minimum Curvature  
**Output errors are at** 2.00 sigma  
**Database:** Landmark  
**Offset TVD Reference:** Offset Datum

Reference Depths are relative to WELL @ 4796.0ft (RKB - 13')

Offset Depths are relative to Offset Datum

Central Meridian is -105.500000 °

Coordinates are relative to: SRC Wiedeman A-5-4CHZ

Coordinate System is US State Plane 1983, Colorado Northern Zone

Grid Convergence at Surface is: 0.45°

