

Synergy Resources

Well Name: **SRC Wiedeman A-5-4NHZ**

Surface Location: SRC Wiedeman Pad Sec.5-T5N-R66W
North American Datum 1983 , US State Plane 1983 , Colorado Northern Zone

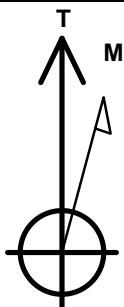
Ground Elevation: 4783.0

+N/-S	+E/-W	Northing	Easting	Latitude	Longitude	Slot
0.0	0.0	1401432.43	3194379.20	40.433233	-104.801726	

RKB - 13' WELL @ 4796.0ft (RKB - 13')

WELLBORE TARGET DETAILS

Name	TVD	+N/-S	+E/-W	Shape
SHL 1438'FNL & 2438'FEL, Sec. 5		0.0	0.0	Point
BHL 1664'FNL & 2189'FWL, Sec.4	7053.0	-157.3	4633.2	Point



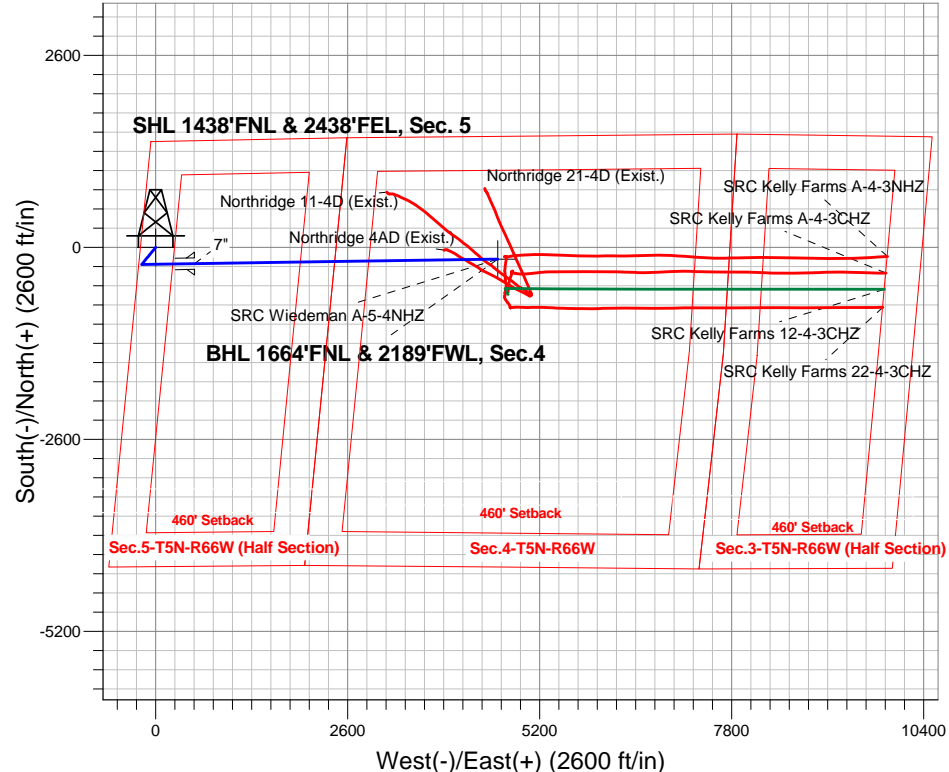
Azimuths to True North
Magnetic North: 8.48°

Magnetic Field
Strength: 52826.5snT
Dip Angle: 66.97°
Date: 6/24/2014
Model: IGRF2010

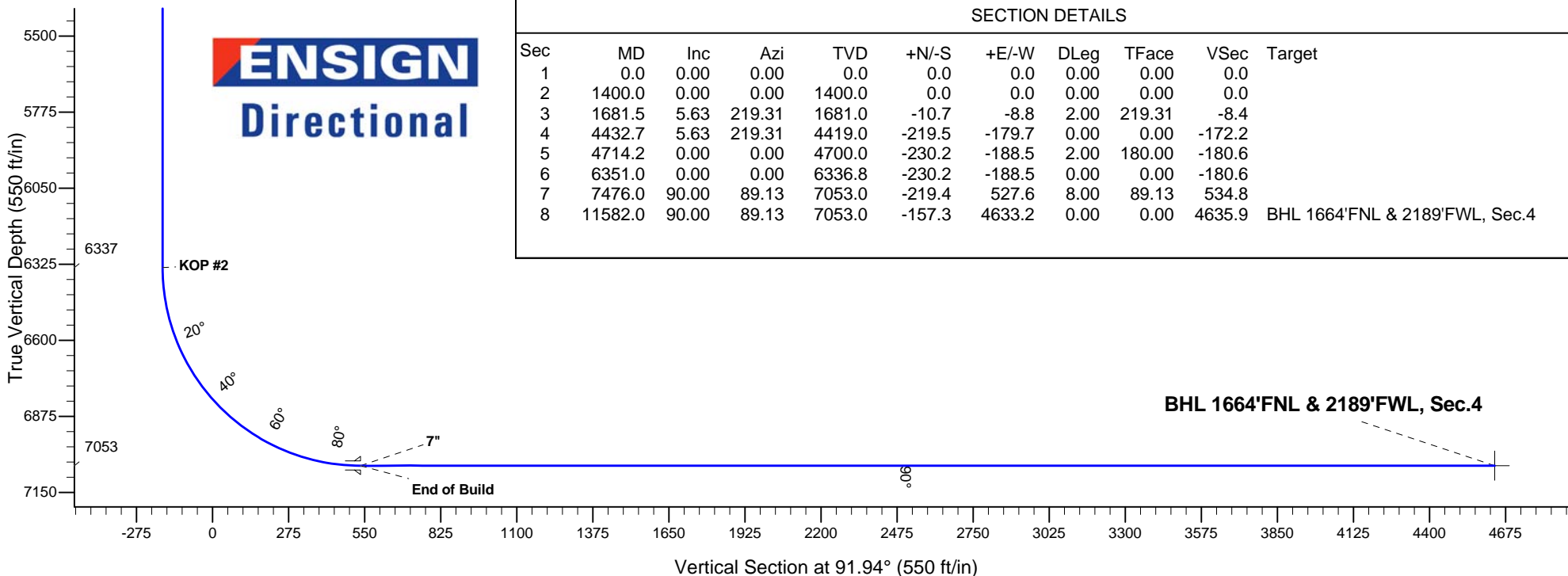
SRC Wiedeman Pad Sec.5-T5N-R66W
SRC Wiedeman A-5-4NHZ
Plan #1 (6-24-14)
15:24, June 25 2014

ANNOTATIONS

TVD	MD	Annotation
1400.0	1400.0	KOP #1
6336.8	6351.0	KOP #2
7053.0	7476.0	End of Build



ENSIGN
Directional



SECTION DETAILS

Sec	MD	Inc	Azi	TVD	+N/-S	+E/-W	DLeg	TFace	VSec	Target
1	0.0	0.00	0.00	0.0	0.0	0.0	0.00	0.00	0.0	
2	1400.0	0.00	0.00	1400.0	0.0	0.0	0.00	0.00	0.0	
3	1681.5	5.63	219.31	1681.0	-10.7	-8.8	2.00	219.31	-8.4	
4	4432.7	5.63	219.31	4419.0	-219.5	-179.7	0.00	0.00	-172.2	
5	4714.2	0.00	0.00	4700.0	-230.2	-188.5	2.00	180.00	-180.6	
6	6351.0	0.00	0.00	6336.8	-230.2	-188.5	0.00	0.00	-180.6	
7	7476.0	90.00	89.13	7053.0	-219.4	527.6	8.00	89.13	534.8	
8	11582.0	90.00	89.13	7053.0	-157.3	4633.2	0.00	0.00	4635.9	BHL 1664'FNL & 2189'FWL, Sec.4



Synergy Resources

Sec.5-T5N-R66W

SRC Wiedeman Pad Sec.5-T5N-R66W

SRC Wiedeman A-5-4NHZ

Wellbore #1

Plan: Plan #1 (6-24-14)

Standard Planning Report

25 June, 2014



Database:	Landmark	Local Co-ordinate Reference:	Well SRC Wiedeman A-5-4NHZ
Company:	Synergy Resources	TVD Reference:	WELL @ 4796.0ft (RKB - 13')
Project:	Sec.5-T5N-R66W	MD Reference:	WELL @ 4796.0ft (RKB - 13')
Site:	SRC Wiedeman Pad Sec.5-T5N-R66W	North Reference:	True
Well:	SRC Wiedeman A-5-4NHZ	Survey Calculation Method:	Minimum Curvature
Wellbore:	Wellbore #1		
Design:	Plan #1 (6-24-14)		

Project	Sec.5-T5N-R66W		
Map System:	US State Plane 1983	System Datum:	Mean Sea Level
Geo Datum:	North American Datum 1983		Using Well Reference Point
Map Zone:	Colorado Northern Zone		Using geodetic scale factor

Site						SRC Wiedeman Pad Sec.5-T5N-R66W											
Site Position:						Northing:			1,401,391.96 ft			Latitude:			40.433123		
From:			Lat/Long			Easting:			3,194,327.74 ft			Longitude:			-104.801912		
Position Uncertainty:			0.0 ft			Slot Radius:			"			Grid Convergence:			0.45 °		

Well	SRC Wiedeman A-5-4NHZ					
Well Position	+N/-S	40.1 ft	Northing:	1,401,432.43 ft	Latitude:	40.433233
	+E/-W	51.8 ft	Easting:	3,194,379.20 ft	Longitude:	-104.801726
Position Uncertainty		0.0 ft	Wellhead Elevation:	ft	Ground Level:	4,783.0 ft

Wellbore	Wellbore #1				
Magnetics	Model Name	Sample Date	Declination (°)	Dip Angle (°)	Field Strength (nT)
	IGRF2010	6/24/2014	8.48	66.97	52,826

Design	Plan #1 (6-24-14)			
Audit Notes:				
Version:	Phase:	PROTOTYPE	Tie On Depth:	0.0
Vertical Section:	Depth From (TVD) (ft)	+N/-S (ft)	+E/-W (ft)	Direction (°)
	0.0	0.0	0.0	91.94

Plan Sections										
Measured Depth (ft)	Inclination (°)	Azimuth (°)	Vertical Depth (ft)	+N/-S (ft)	+E/-W (ft)	Dogleg Rate (°/100ft)	Build Rate (°/100ft)	Turn Rate (°/100ft)	TFO (°)	Target
0.0	0.00	0.00	0.0	0.0	0.0	0.00	0.00	0.00	0.00	
1,400.0	0.00	0.00	1,400.0	0.0	0.0	0.00	0.00	0.00	0.00	
1,681.5	5.63	219.31	1,681.0	-10.7	-8.8	2.00	2.00	0.00	219.31	
4,432.7	5.63	219.31	4,419.0	-219.5	-179.7	0.00	0.00	0.00	0.00	
4,714.2	0.00	0.00	4,700.0	-230.2	-188.5	2.00	-2.00	0.00	180.00	
6,351.0	0.00	0.00	6,336.8	-230.2	-188.5	0.00	0.00	0.00	0.00	
7,476.0	90.00	89.13	7,053.0	-219.4	527.6	8.00	8.00	0.00	89.13	
11,582.0	90.00	89.13	7,053.0	-157.3	4,633.2	0.00	0.00	0.00	0.00	BHL 1664'FNL & 21

Database:	Landmark	Local Co-ordinate Reference:	Well SRC Wiedeman A-5-4NHZ
Company:	Synergy Resources	TVD Reference:	WELL @ 4796.0ft (RKB - 13')
Project:	Sec.5-T5N-R66W	MD Reference:	WELL @ 4796.0ft (RKB - 13')
Site:	SRC Wiedeman Pad Sec.5-T5N-R66W	North Reference:	True
Well:	SRC Wiedeman A-5-4NHZ	Survey Calculation Method:	Minimum Curvature
Wellbore:	Wellbore #1		
Design:	Plan #1 (6-24-14)		

Planned Survey									
Measured Depth (ft)	Inclination (°)	Azimuth (°)	Vertical Depth (ft)	+N/-S (ft)	+E/-W (ft)	Vertical Section (ft)	Dogleg Rate (°/100ft)	Build Rate (°/100ft)	Turn Rate (°/100ft)
0.0	0.00	0.00	0.0	0.0	0.0	0.0	0.00	0.00	0.00
1.0	0.00	0.00	1.0	0.0	0.0	0.0	0.00	0.00	0.00
SHL 1438'FNL & 2438'FEL, Sec. 5									
100.0	0.00	0.00	100.0	0.0	0.0	0.0	0.00	0.00	0.00
200.0	0.00	0.00	200.0	0.0	0.0	0.0	0.00	0.00	0.00
300.0	0.00	0.00	300.0	0.0	0.0	0.0	0.00	0.00	0.00
400.0	0.00	0.00	400.0	0.0	0.0	0.0	0.00	0.00	0.00
500.0	0.00	0.00	500.0	0.0	0.0	0.0	0.00	0.00	0.00
600.0	0.00	0.00	600.0	0.0	0.0	0.0	0.00	0.00	0.00
700.0	0.00	0.00	700.0	0.0	0.0	0.0	0.00	0.00	0.00
800.0	0.00	0.00	800.0	0.0	0.0	0.0	0.00	0.00	0.00
900.0	0.00	0.00	900.0	0.0	0.0	0.0	0.00	0.00	0.00
1,000.0	0.00	0.00	1,000.0	0.0	0.0	0.0	0.00	0.00	0.00
1,100.0	0.00	0.00	1,100.0	0.0	0.0	0.0	0.00	0.00	0.00
1,200.0	0.00	0.00	1,200.0	0.0	0.0	0.0	0.00	0.00	0.00
1,300.0	0.00	0.00	1,300.0	0.0	0.0	0.0	0.00	0.00	0.00
1,400.0	0.00	0.00	1,400.0	0.0	0.0	0.0	0.00	0.00	0.00
KOP #1									
1,500.0	2.00	219.31	1,500.0	-1.4	-1.1	-1.1	2.00	2.00	0.00
1,600.0	4.00	219.31	1,599.8	-5.4	-4.4	-4.2	2.00	2.00	0.00
1,681.5	5.63	219.31	1,681.0	-10.7	-8.8	-8.4	2.00	2.00	0.00
1,700.0	5.63	219.31	1,699.5	-12.1	-9.9	-9.5	0.00	0.00	0.00
1,800.0	5.63	219.31	1,799.0	-19.7	-16.1	-15.4	0.00	0.00	0.00
1,900.0	5.63	219.31	1,898.5	-27.3	-22.3	-21.4	0.00	0.00	0.00
2,000.0	5.63	219.31	1,998.0	-34.9	-28.5	-27.3	0.00	0.00	0.00
2,100.0	5.63	219.31	2,097.5	-42.5	-34.8	-33.3	0.00	0.00	0.00
2,200.0	5.63	219.31	2,197.0	-50.0	-41.0	-39.3	0.00	0.00	0.00
2,300.0	5.63	219.31	2,296.6	-57.6	-47.2	-45.2	0.00	0.00	0.00
2,400.0	5.63	219.31	2,396.1	-65.2	-53.4	-51.2	0.00	0.00	0.00
2,500.0	5.63	219.31	2,495.6	-72.8	-59.6	-57.1	0.00	0.00	0.00
2,600.0	5.63	219.31	2,595.1	-80.4	-65.8	-63.1	0.00	0.00	0.00
2,700.0	5.63	219.31	2,694.6	-88.0	-72.0	-69.0	0.00	0.00	0.00
2,800.0	5.63	219.31	2,794.2	-95.6	-78.3	-75.0	0.00	0.00	0.00
2,900.0	5.63	219.31	2,893.7	-103.2	-84.5	-80.9	0.00	0.00	0.00
3,000.0	5.63	219.31	2,993.2	-110.8	-90.7	-86.9	0.00	0.00	0.00
3,100.0	5.63	219.31	3,092.7	-118.4	-96.9	-92.8	0.00	0.00	0.00
3,200.0	5.63	219.31	3,192.2	-125.9	-103.1	-98.8	0.00	0.00	0.00
3,300.0	5.63	219.31	3,291.7	-133.5	-109.3	-104.7	0.00	0.00	0.00
3,400.0	5.63	219.31	3,391.3	-141.1	-115.5	-110.7	0.00	0.00	0.00
3,500.0	5.63	219.31	3,490.8	-148.7	-121.8	-116.6	0.00	0.00	0.00
3,600.0	5.63	219.31	3,590.3	-156.3	-128.0	-122.6	0.00	0.00	0.00
3,700.0	5.63	219.31	3,689.8	-163.9	-134.2	-128.6	0.00	0.00	0.00
3,800.0	5.63	219.31	3,789.3	-171.5	-140.4	-134.5	0.00	0.00	0.00
3,900.0	5.63	219.31	3,888.8	-179.1	-146.6	-140.5	0.00	0.00	0.00
4,000.0	5.63	219.31	3,988.4	-186.7	-152.8	-146.4	0.00	0.00	0.00
4,100.0	5.63	219.31	4,087.9	-194.3	-159.1	-152.4	0.00	0.00	0.00
4,200.0	5.63	219.31	4,187.4	-201.8	-165.3	-158.3	0.00	0.00	0.00
4,300.0	5.63	219.31	4,286.9	-209.4	-171.5	-164.3	0.00	0.00	0.00
4,400.0	5.63	219.31	4,386.4	-217.0	-177.7	-170.2	0.00	0.00	0.00
4,432.7	5.63	219.31	4,419.0	-219.5	-179.7	-172.2	0.00	0.00	0.00
4,500.0	4.28	219.31	4,486.0	-224.0	-183.4	-175.7	2.00	-2.00	0.00
4,600.0	2.28	219.31	4,585.9	-228.4	-187.0	-179.2	2.00	-2.00	0.00
4,700.0	0.28	219.31	4,685.8	-230.2	-188.5	-180.5	2.00	-2.00	0.00
4,714.2	0.00	0.00	4,700.0	-230.2	-188.5	-180.6	2.00	-2.00	0.00

Database:	Landmark	Local Co-ordinate Reference:	Well SRC Wiedeman A-5-4NHZ
Company:	Synergy Resources	TVD Reference:	WELL @ 4796.0ft (RKB - 13')
Project:	Sec.5-T5N-R66W	MD Reference:	WELL @ 4796.0ft (RKB - 13')
Site:	SRC Wiedeman Pad Sec.5-T5N-R66W	North Reference:	True
Well:	SRC Wiedeman A-5-4NHZ	Survey Calculation Method:	Minimum Curvature
Wellbore:	Wellbore #1		
Design:	Plan #1 (6-24-14)		

Planned Survey									
Measured Depth (ft)	Inclination (°)	Azimuth (°)	Vertical Depth (ft)	+N/-S (ft)	+E/-W (ft)	Vertical Section (ft)	Dogleg Rate (°/100ft)	Build Rate (°/100ft)	Turn Rate (°/100ft)
4,800.0	0.00	0.00	4,785.8	-230.2	-188.5	-180.6	0.00	0.00	0.00
4,900.0	0.00	0.00	4,885.8	-230.2	-188.5	-180.6	0.00	0.00	0.00
5,000.0	0.00	0.00	4,985.8	-230.2	-188.5	-180.6	0.00	0.00	0.00
5,100.0	0.00	0.00	5,085.8	-230.2	-188.5	-180.6	0.00	0.00	0.00
5,200.0	0.00	0.00	5,185.8	-230.2	-188.5	-180.6	0.00	0.00	0.00
5,300.0	0.00	0.00	5,285.8	-230.2	-188.5	-180.6	0.00	0.00	0.00
5,400.0	0.00	0.00	5,385.8	-230.2	-188.5	-180.6	0.00	0.00	0.00
5,500.0	0.00	0.00	5,485.8	-230.2	-188.5	-180.6	0.00	0.00	0.00
5,600.0	0.00	0.00	5,585.8	-230.2	-188.5	-180.6	0.00	0.00	0.00
5,700.0	0.00	0.00	5,685.8	-230.2	-188.5	-180.6	0.00	0.00	0.00
5,800.0	0.00	0.00	5,785.8	-230.2	-188.5	-180.6	0.00	0.00	0.00
5,900.0	0.00	0.00	5,885.8	-230.2	-188.5	-180.6	0.00	0.00	0.00
6,000.0	0.00	0.00	5,985.8	-230.2	-188.5	-180.6	0.00	0.00	0.00
6,100.0	0.00	0.00	6,085.8	-230.2	-188.5	-180.6	0.00	0.00	0.00
6,200.0	0.00	0.00	6,185.8	-230.2	-188.5	-180.6	0.00	0.00	0.00
6,300.0	0.00	0.00	6,285.8	-230.2	-188.5	-180.6	0.00	0.00	0.00
6,351.0	0.00	0.00	6,336.8	-230.2	-188.5	-180.6	0.00	0.00	0.00
KOP #2									
6,400.0	3.92	89.13	6,385.8	-230.2	-186.8	-178.9	8.00	8.00	0.00
6,500.0	11.92	89.13	6,484.8	-230.0	-173.0	-165.1	8.00	8.00	0.00
6,600.0	19.92	89.13	6,580.8	-229.6	-145.6	-137.8	8.00	8.00	0.00
6,700.0	27.92	89.13	6,672.2	-228.9	-105.1	-97.3	8.00	8.00	0.00
6,800.0	35.92	89.13	6,757.0	-228.1	-52.3	-44.5	8.00	8.00	0.00
6,900.0	43.92	89.13	6,833.6	-227.2	11.8	19.5	8.00	8.00	0.00
7,000.0	51.92	89.13	6,900.6	-226.1	86.0	93.6	8.00	8.00	0.00
7,100.0	59.92	89.13	6,956.6	-224.8	168.7	176.3	8.00	8.00	0.00
7,200.0	67.92	89.13	7,000.5	-223.4	258.5	265.9	8.00	8.00	0.00
7,300.0	75.92	89.13	7,031.5	-222.0	353.4	360.8	8.00	8.00	0.00
7,400.0	83.92	89.13	7,049.0	-220.5	451.8	459.0	8.00	8.00	0.00
7,476.0	90.00	89.13	7,053.0	-219.4	527.7	534.8	8.00	8.00	0.00
End of Build - 7"									
7,500.0	90.00	89.13	7,053.0	-219.0	551.7	558.8	0.00	0.00	0.00
7,600.0	90.00	89.13	7,053.0	-217.5	651.6	658.6	0.00	0.00	0.00
7,700.0	90.00	89.13	7,053.0	-216.0	751.6	758.5	0.00	0.00	0.00
7,800.0	90.00	89.13	7,053.0	-214.5	851.6	858.4	0.00	0.00	0.00
7,900.0	90.00	89.13	7,053.0	-213.0	951.6	958.3	0.00	0.00	0.00
8,000.0	90.00	89.13	7,053.0	-211.5	1,051.6	1,058.2	0.00	0.00	0.00
8,100.0	90.00	89.13	7,053.0	-209.9	1,151.6	1,158.0	0.00	0.00	0.00
8,200.0	90.00	89.13	7,053.0	-208.4	1,251.6	1,257.9	0.00	0.00	0.00
8,300.0	90.00	89.13	7,053.0	-206.9	1,351.6	1,357.8	0.00	0.00	0.00
8,400.0	90.00	89.13	7,053.0	-205.4	1,451.6	1,457.7	0.00	0.00	0.00
8,500.0	90.00	89.13	7,053.0	-203.9	1,551.5	1,557.6	0.00	0.00	0.00
8,600.0	90.00	89.13	7,053.0	-202.4	1,651.5	1,657.4	0.00	0.00	0.00
8,700.0	90.00	89.13	7,053.0	-200.9	1,751.5	1,757.3	0.00	0.00	0.00
8,800.0	90.00	89.13	7,053.0	-199.4	1,851.5	1,857.2	0.00	0.00	0.00
8,900.0	90.00	89.13	7,053.0	-197.8	1,951.5	1,957.1	0.00	0.00	0.00
9,000.0	90.00	89.13	7,053.0	-196.3	2,051.5	2,057.0	0.00	0.00	0.00
9,100.0	90.00	89.13	7,053.0	-194.8	2,151.5	2,156.8	0.00	0.00	0.00
9,200.0	90.00	89.13	7,053.0	-193.3	2,251.5	2,256.7	0.00	0.00	0.00
9,300.0	90.00	89.13	7,053.0	-191.8	2,351.5	2,356.6	0.00	0.00	0.00
9,400.0	90.00	89.13	7,053.0	-190.3	2,451.4	2,456.5	0.00	0.00	0.00
9,500.0	90.00	89.13	7,053.0	-188.8	2,551.4	2,556.4	0.00	0.00	0.00
9,600.0	90.00	89.13	7,053.0	-187.3	2,651.4	2,656.2	0.00	0.00	0.00
9,700.0	90.00	89.13	7,053.0	-185.8	2,751.4	2,756.1	0.00	0.00	0.00

Database: Landmark
Company: Synergy Resources
Project: Sec.5-T5N-R66W
Site: SRC Wiedeman Pad Sec.5-T5N-R66W
Well: SRC Wiedeman A-5-4NHZ
Wellbore: Wellbore #1
Design: Plan #1 (6-24-14)

Local Co-ordinate Reference: Well SRC Wiedeman A-5-4NHZ
TVD Reference: WELL @ 4796.0ft (RKB - 13')
MD Reference: WELL @ 4796.0ft (RKB - 13')
North Reference: True
Survey Calculation Method: Minimum Curvature

Planned Survey

Measured Depth (ft)	Inclination (°)	Azimuth (°)	Vertical Depth (ft)	+N/-S (ft)	+E/-W (ft)	Vertical Section (ft)	Dogleg Rate (°/100ft)	Build Rate (°/100ft)	Turn Rate (°/100ft)
9,800.0	90.00	89.13	7,053.0	-184.2	2,851.4	2,856.0	0.00	0.00	0.00
9,900.0	90.00	89.13	7,053.0	-182.7	2,951.4	2,955.9	0.00	0.00	0.00
10,000.0	90.00	89.13	7,053.0	-181.2	3,051.4	3,055.8	0.00	0.00	0.00
10,100.0	90.00	89.13	7,053.0	-179.7	3,151.4	3,155.6	0.00	0.00	0.00
10,200.0	90.00	89.13	7,053.0	-178.2	3,251.3	3,255.5	0.00	0.00	0.00
10,300.0	90.00	89.13	7,053.0	-176.7	3,351.3	3,355.4	0.00	0.00	0.00
10,400.0	90.00	89.13	7,053.0	-175.2	3,451.3	3,455.3	0.00	0.00	0.00
10,500.0	90.00	89.13	7,053.0	-173.7	3,551.3	3,555.2	0.00	0.00	0.00
10,600.0	90.00	89.13	7,053.0	-172.1	3,651.3	3,655.0	0.00	0.00	0.00
10,700.0	90.00	89.13	7,053.0	-170.6	3,751.3	3,754.9	0.00	0.00	0.00
10,800.0	90.00	89.13	7,053.0	-169.1	3,851.3	3,854.8	0.00	0.00	0.00
10,900.0	90.00	89.13	7,053.0	-167.6	3,951.3	3,954.7	0.00	0.00	0.00
11,000.0	90.00	89.13	7,053.0	-166.1	4,051.3	4,054.6	0.00	0.00	0.00
11,100.0	90.00	89.13	7,053.0	-164.6	4,151.2	4,154.4	0.00	0.00	0.00
11,200.0	90.00	89.13	7,053.0	-163.1	4,251.2	4,254.3	0.00	0.00	0.00
11,300.0	90.00	89.13	7,053.0	-161.6	4,351.2	4,354.2	0.00	0.00	0.00
11,400.0	90.00	89.13	7,053.0	-160.1	4,451.2	4,454.1	0.00	0.00	0.00
11,500.0	90.00	89.13	7,053.0	-158.5	4,551.2	4,554.0	0.00	0.00	0.00
11,582.0	90.00	89.13	7,053.0	-157.3	4,633.2	4,635.9	0.00	0.00	0.00
BHL 1664'FNL & 2189'FWL, Sec.4									

Targets
Target Name

- hit/miss target	Dip Angle (°)	Dip Dir. (°)	TVD (ft)	+N/-S (ft)	+E/-W (ft)	Northing (ft)	Easting (ft)	Latitude	Longitude
- Shape									
SHL 1438'FNL & 2438'FWL	0.00	0.00	1.0	0.0	0.0	1,401,432.44	3,194,379.20	40.433233	-104.801726
- plan hits target center									
- Point									
BHL 1664'FNL & 2189'FWL	0.00	0.00	7,053.0	-157.3	4,633.2	1,401,311.62	3,199,013.30	40.432800	-104.785083
- plan hits target center									
- Point									

Casing Points

Measured Depth (ft)	Vertical Depth (ft)	Name	Casing Diameter (")	Hole Diameter (")
7,476.0	7,053.0	7"	7	7-1/2

Plan Annotations

Measured Depth (ft)	Vertical Depth (ft)	Local Coordinates		Comment
		+N/-S (ft)	+E/-W (ft)	
1,400.0	1,400.0	0.0	0.0	KOP #1
6,351.0	6,336.8	-230.2	-188.5	KOP #2
7,476.0	7,053.0	-219.4	527.7	End of Build

Synergy Resources

Sec.5-T5N-R66W

SRC Wiedeman Pad Sec.5-T5N-R66W

SRC Wiedeman A-5-4NHZ

Wellbore #1

Plan #1 (6-24-14)

Anticollision Report

25 June, 2014

Company:	Synergy Resources	Local Co-ordinate Reference:	Well SRC Wiedeman A-5-4NHZ
Project:	Sec.5-T5N-R66W	TVD Reference:	WELL @ 4796.0ft (RKB - 13')
Reference Site:	SRC Wiedeman Pad Sec.5-T5N-R66W	MD Reference:	WELL @ 4796.0ft (RKB - 13')
Site Error:	0.0ft	North Reference:	True
Reference Well:	SRC Wiedeman A-5-4NHZ	Survey Calculation Method:	Minimum Curvature
Well Error:	0.0ft	Output errors are at	2.00 sigma
Reference Wellbore	Wellbore #1	Database:	Landmark
Reference Design:	Plan #1 (6-24-14)	Offset TVD Reference:	Offset Datum

Reference	Plan #1 (6-24-14)		
Filter type:	NO GLOBAL FILTER: Using user defined selection & filtering criteria		
Interpolation Method:	Stations	Error Model:	ISCWSA
Depth Range:	Unlimited	Scan Method:	Closest Approach 3D
Results Limited by:	Maximum center-center distance of 1,000.0ft	Error Surface:	Elliptical Conic
Warning Levels Evaluated at:	2.00 Sigma		

Survey Tool Program	Date 6/25/2014			
From (ft)	To (ft)	Survey (Wellbore)	Tool Name	Description
0.0	11,582.0	Plan #1 (6-24-14) (Wellbore #1)	MWD	MWD - Standard

Summary						
Site Name	Reference Measured Depth (ft)	Offset Measured Depth (ft)	Distance Between Centres (ft)	Distance Between Ellipses (ft)	Separation Factor	Warning
Northridge Pad Sec.4-T5N-R66W						
Northridge 11-4D (Exist.) - Wellbore #1 - Wellbore #1	10,102.0	7,509.4	920.7	788.5	6.963	CC, ES
Northridge 11-4D (Exist.) - Wellbore #1 - Wellbore #1	10,300.0	7,507.1	941.8	804.1	6.839	SF
Northridge 12-4D (Exist.) - Wellbore #1 - Wellbore #1	10,203.9	7,317.1	397.1	265.9	3.028	CC, ES, SF
Northridge 21-4D (Exist.) - Wellbore #1 - Wellbore #1	11,427.5	7,185.0	935.0	787.2	6.325	CC, ES
Northridge 21-4D (Exist.) - Wellbore #1 - Wellbore #1	11,582.0	7,180.5	947.7	795.6	6.231	SF
Northridge 22-4D (Exist.) - Wellbore #1 - Wellbore #1	11,404.2	7,061.6	611.2	466.3	4.218	CC, ES
Northridge 22-4D (Exist.) - Wellbore #1 - Wellbore #1	11,500.0	7,059.4	618.6	471.1	4.192	SF
Northridge 4AD (Exist.) - Wellbore #1 - Wellbore #1	10,860.0	7,199.3	130.6	-7.4	0.946	Level 1, CC, ES, SF
Northridge 4KD (Exist.) - Wellbore #1 - Wellbore #1						Out of range
SRC Kelly Farms Pad Sec.4-T5N-R66W						
SRC Kelly Farms 12-4-3CHZ - Wellbore #1 - Plan #3 (6-	11,582.0	6,900.0	483.5	344.9	3.489	CC, ES, SF
SRC Kelly Farms 22-4-3CHZ - Wellbore #1 - Wellbore #1	11,582.0	6,883.0	725.9	583.5	5.097	CC, ES, SF
SRC Kelly Farms A-4-3CHZ - Wellbore #1 - Wellbore #1	11,582.0	6,886.0	383.6	267.9	3.314	CC, ES, SF
SRC Kelly Farms A-4-3NHZ - Wellbore #1 - Wellbore #1	11,582.0	6,814.1	419.5	371.2	8.676	CC, ES, SF
SRC Wiedeman Pad Sec.5-T5N-R66W						
SRC Wiedeman 22-5-4CHZ - Wellbore #1 - Plan #1 (6-2	800.0	800.0	45.0	41.6	13.349	CC, ES
SRC Wiedeman 22-5-4CHZ - Wellbore #1 - Plan #1 (6-2	11,582.0	11,824.1	691.0	436.1	2.711	SF
SRC Wiedeman 22-5-4NHZ - Wellbore #1 - Plan #1 (6-2	1,000.0	1,000.0	30.0	25.7	7.026	CC, ES
SRC Wiedeman 22-5-4NHZ - Wellbore #1 - Plan #1 (6-2	11,582.0	11,621.6	442.0	179.0	1.681	SF
SRC Wiedeman A-5-3CHZ - Wellbore #1 - Plan #1 (6-24	1,400.0	1,400.0	15.0	9.0	2.477	CC, ES
SRC Wiedeman A-5-3CHZ - Wellbore #1 - Plan #1 (6-24	11,582.0	11,710.0	359.0	125.1	1.535	SF
SRC Wiedeman A-5-4CHZ - Wellbore #1 - Plan #1 (6-24	1,200.0	1,200.0	15.0	9.8	2.902	CC, ES
SRC Wiedeman A-5-4CHZ - Wellbore #1 - Plan #1 (6-24	11,582.0	11,764.6	279.0	66.7	1.314	Level 3, SF

Northridge Pad Sec.4-T5N-R66W - Northridge 11-4D (Exist.) - Wellbore #1 - Wellbore #1											Offset Site Error:		0.0 ft
Survey Program: 147-MWD											Offset Well Error:		0.0 ft
Reference		Offset		Semi Major Axis		Distance							
Measured Depth	Vertical	Measured	Vertical	Reference	Offset	Highside	Offset Wellbore	Centre	Between	Between	Minimum	Separation	Warning
Depth (ft)	Depth (ft)	Depth (ft)	Depth (ft)	(ft)	(ft)	Tooface (°)	+N/-S (ft)	+E/-W (ft)	Centres (ft)	Ellipses (ft)	Separation (ft)	Factor	
9,800.0	7,053.0	7,513.2	6,993.8	82.3	49.2	-88.99	740.8	3,139.4	969.0	845.1	123.90	7.821	
9,900.0	7,053.0	7,511.9	6,992.6	85.0	49.2	-88.91	740.8	3,139.4	942.6	816.0	126.65	7.442	
10,000.0	7,053.0	7,510.7	6,991.3	87.8	49.2	-88.84	740.8	3,139.4	926.3	796.9	129.41	7.158	
10,100.0	7,053.0	7,509.5	6,990.1	90.6	49.2	-88.76	740.7	3,139.4	920.7	788.6	132.17	6.966	

Company:	Synergy Resources	Local Co-ordinate Reference:	Well SRC Wiedeman A-5-4NHZ
Project:	Sec.5-T5N-R66W	TVD Reference:	WELL @ 4796.0ft (RKB - 13')
Reference Site:	SRC Wiedeman Pad Sec.5-T5N-R66W	MD Reference:	WELL @ 4796.0ft (RKB - 13')
Site Error:	0.0ft	North Reference:	True
Reference Well:	SRC Wiedeman A-5-4NHZ	Survey Calculation Method:	Minimum Curvature
Well Error:	0.0ft	Output errors are at	2.00 sigma
Reference Wellbore	Wellbore #1	Database:	Landmark
Reference Design:	Plan #1 (6-24-14)	Offset TVD Reference:	Offset Datum

Offset Design Northridge Pad Sec.4-T5N-R66W - Northridge 11-4D (Exist.) - Wellbore #1 - Wellbore #1													Offset Site Error:	0.0 ft
Survey Program: 147-MWD													Offset Well Error:	0.0 ft
Reference		Offset		Semi Major Axis			Distance						Warning	
Measured Depth	Vertical Depth	Measured Depth	Vertical Depth	Reference	Offset	Highside Toolface	Offset Wellbore Centre		Between Centres	Between Ellipses	Minimum Separation	Separation Factor		
(ft)	(ft)	(ft)	(ft)	(ft)	(ft)	(°)	+N/-S (ft)	+E/-W (ft)	(ft)	(ft)	(ft)			
10,102.0	7,053.0	7,509.4	6,990.1	90.6	49.2	-88.76	740.7	3,139.4	920.7	788.5	132.23	6.963 CC, ES		
10,200.0	7,053.0	7,508.3	6,988.9	93.3	49.2	-88.69	740.7	3,139.4	925.9	791.0	134.93	6.862		
10,300.0	7,053.0	7,507.1	6,987.8	96.1	49.2	-88.62	740.7	3,139.4	941.8	804.1	137.70	6.839 SF		
10,400.0	7,053.0	7,506.0	6,986.6	98.9	49.2	-88.55	740.6	3,139.4	967.8	827.3	140.47	6.890		

Company:	Synergy Resources	Local Co-ordinate Reference:	Well SRC Wiedeman A-5-4NHZ
Project:	Sec.5-T5N-R66W	TVD Reference:	WELL @ 4796.0ft (RKB - 13')
Reference Site:	SRC Wiedeman Pad Sec.5-T5N-R66W	MD Reference:	WELL @ 4796.0ft (RKB - 13')
Site Error:	0.0ft	North Reference:	True
Reference Well:	SRC Wiedeman A-5-4NHZ	Survey Calculation Method:	Minimum Curvature
Well Error:	0.0ft	Output errors are at	2.00 sigma
Reference Wellbore	Wellbore #1	Database:	Landmark
Reference Design:	Plan #1 (6-24-14)	Offset TVD Reference:	Offset Datum

Offset Design Northridge Pad Sec.4-T5N-R66W - Northridge 12-4D (Exist.) - Wellbore #1 - Wellbore #1												Offset Site Error:	0.0 ft
Survey Program: 182-MWD												Offset Well Error:	0.0 ft
Reference		Offset		Semi Major Axis			Distance						Warning
Measured Depth (ft)	Vertical Depth (ft)	Measured Depth (ft)	Vertical Depth (ft)	Reference (ft)	Offset (ft)	Highside Toolface (°)	Offset Wellbore Centre +N/-S (ft)	+E/-W (ft)	Between Centres (ft)	Between Ellipses (ft)	Minimum Separation (ft)	Separation Factor	
9,300.0	7,053.0	7,321.1	7,013.4	68.6	37.8	90.35	-575.2	3,261.2	987.2	880.9	106.29	9.288	
9,400.0	7,053.0	7,320.6	7,013.0	71.3	37.8	90.29	-575.2	3,261.2	896.6	787.6	109.03	8.223	
9,500.0	7,053.0	7,320.2	7,012.6	74.0	37.8	90.22	-575.2	3,261.2	808.1	696.4	111.77	7.230	
9,600.0	7,053.0	7,319.7	7,012.1	76.8	37.8	90.16	-575.2	3,261.2	722.7	608.2	114.52	6.311	
9,700.0	7,053.0	7,319.3	7,011.7	79.5	37.8	90.10	-575.2	3,261.2	641.5	524.3	117.27	5.471	
9,800.0	7,053.0	7,318.9	7,011.2	82.3	37.8	90.03	-575.2	3,261.2	566.4	446.4	120.02	4.719	
9,900.0	7,053.0	7,318.4	7,010.8	85.0	37.8	89.97	-575.2	3,261.2	500.0	377.3	122.77	4.073	
10,000.0	7,053.0	7,318.0	7,010.3	87.8	37.8	89.90	-575.2	3,261.2	446.4	320.8	125.53	3.556	
10,100.0	7,053.0	7,317.5	7,009.9	90.6	37.8	89.84	-575.2	3,261.2	410.5	282.2	128.30	3.199	
10,200.0	7,053.0	7,317.1	7,009.4	93.3	37.8	89.77	-575.2	3,261.2	397.1	266.1	131.06	3.030	
10,203.9	7,053.0	7,317.1	7,009.4	93.4	37.8	89.77	-575.2	3,261.2	397.1	265.9	131.17	3.028	CC, ES, SF
10,300.0	7,053.0	7,316.6	7,009.0	96.1	37.8	89.71	-575.2	3,261.2	408.6	274.8	133.83	3.053	
10,400.0	7,053.0	7,316.2	7,008.5	98.9	37.8	89.64	-575.2	3,261.2	442.9	306.3	136.60	3.243	
10,500.0	7,053.0	7,315.7	7,008.1	101.6	37.8	89.58	-575.2	3,261.2	495.4	356.0	139.37	3.555	
10,600.0	7,053.0	7,315.2	7,007.6	104.4	37.8	89.51	-575.2	3,261.2	560.9	418.8	142.14	3.946	
10,700.0	7,053.0	7,314.8	7,007.1	107.2	37.8	89.44	-575.2	3,261.2	635.5	490.6	144.91	4.385	
10,800.0	7,053.0	7,314.3	7,006.7	110.0	37.8	89.37	-575.2	3,261.2	716.3	568.6	147.68	4.850	
10,900.0	7,053.0	7,313.8	7,006.2	112.7	37.8	89.31	-575.2	3,261.2	801.4	651.0	150.46	5.327	
11,000.0	7,053.0	7,313.3	7,005.7	115.5	37.8	89.24	-575.2	3,261.2	889.7	736.4	153.24	5.806	
11,100.0	7,053.0	7,312.9	7,005.2	118.3	37.8	89.17	-575.2	3,261.2	980.2	824.2	156.01	6.283	

Company:	Synergy Resources	Local Co-ordinate Reference:	Well SRC Wiedeman A-5-4NHZ
Project:	Sec.5-T5N-R66W	TVD Reference:	WELL @ 4796.0ft (RKB - 13')
Reference Site:	SRC Wiedeman Pad Sec.5-T5N-R66W	MD Reference:	WELL @ 4796.0ft (RKB - 13')
Site Error:	0.0ft	North Reference:	True
Reference Well:	SRC Wiedeman A-5-4NHZ	Survey Calculation Method:	Minimum Curvature
Well Error:	0.0ft	Output errors are at	2.00 sigma
Reference Wellbore	Wellbore #1	Database:	Landmark
Reference Design:	Plan #1 (6-24-14)	Offset TVD Reference:	Offset Datum

Offset Design Northridge Pad Sec.4-T5N-R66W - Northridge 21-4D (Exist.) - Wellbore #1 - Wellbore #1												Offset Site Error:	0.0 ft
Survey Program: 150-MWD												Offset Well Error:	0.0 ft
Reference		Offset		Semi Major Axis			Distance						
Measured Depth (ft)	Vertical Depth (ft)	Measured Depth (ft)	Vertical Depth (ft)	Reference (ft)	Offset (ft)	Highside Toolface (°)	Offset Wellbore Centre +N/-S (ft)	+E/-W (ft)	Between Centres (ft)	Between Ellipses (ft)	Minimum Separation (ft)	Separation Factor	Warning
11,100.0	7,053.0	7,194.5	6,967.6	118.3	31.3	-87.40	774.4	4,464.3	990.7	851.9	138.79	7.138	
11,200.0	7,053.0	7,191.6	6,964.7	121.1	31.3	-87.22	774.2	4,464.4	962.3	820.7	141.55	6.798	
11,300.0	7,053.0	7,188.7	6,961.8	123.9	31.3	-87.04	774.0	4,464.5	943.7	799.4	144.31	6.539	
11,400.0	7,053.0	7,185.8	6,958.9	126.6	31.3	-86.86	773.9	4,464.6	935.4	788.4	147.07	6.360	
11,427.5	7,053.0	7,185.0	6,958.1	127.4	31.3	-86.82	773.8	4,464.6	935.0	787.2	147.83	6.325 CC, ES	
11,500.0	7,053.0	7,182.9	6,956.0	129.4	31.3	-86.69	773.7	4,464.7	937.8	788.0	149.83	6.259	
11,582.0	7,053.0	7,180.5	6,953.6	131.7	31.3	-86.54	773.6	4,464.8	947.7	795.6	152.10	6.231 SF	

Company:	Synergy Resources	Local Co-ordinate Reference:	Well SRC Wiedeman A-5-4NHZ
Project:	Sec.5-T5N-R66W	TVD Reference:	WELL @ 4796.0ft (RKB - 13')
Reference Site:	SRC Wiedeman Pad Sec.5-T5N-R66W	MD Reference:	WELL @ 4796.0ft (RKB - 13')
Site Error:	0.0ft	North Reference:	True
Reference Well:	SRC Wiedeman A-5-4NHZ	Survey Calculation Method:	Minimum Curvature
Well Error:	0.0ft	Output errors are at	2.00 sigma
Reference Wellbore	Wellbore #1	Database:	Landmark
Reference Design:	Plan #1 (6-24-14)	Offset TVD Reference:	Offset Datum

Offset Design Northridge Pad Sec.4-T5N-R66W - Northridge 22-4D (Exist.) - Wellbore #1 - Wellbore #1												Offset Site Error:	0.0 ft
Survey Program: 182-MWD												Offset Well Error:	0.0 ft
Reference		Offset		Semi Major Axis			Distance						
Measured Depth (ft)	Vertical Depth (ft)	Measured Depth (ft)	Vertical Depth (ft)	Reference (ft)	Offset (ft)	Highside Toolface (°)	Offset Wellbore Centre +N/-S (ft)	+E/-W (ft)	Between Centres (ft)	Between Ellipses (ft)	Minimum Separation (ft)	Separation Factor	Warning
10,700.0	7,053.0	7,077.8	7,009.6	107.2	18.3	89.87	-771.3	4,464.3	932.3	806.9	125.41	7.434	
10,800.0	7,053.0	7,075.5	7,007.3	110.0	18.3	89.65	-771.3	4,464.3	859.3	731.1	128.18	6.704	
10,900.0	7,053.0	7,073.2	7,005.0	112.7	18.3	89.44	-771.2	4,464.4	792.2	661.3	130.96	6.050	
11,000.0	7,053.0	7,070.9	7,002.7	115.5	18.3	89.22	-771.1	4,464.4	732.7	599.0	133.73	5.479	
11,100.0	7,053.0	7,068.6	7,000.4	118.3	18.3	89.00	-771.1	4,464.5	682.7	546.2	136.50	5.001	
11,200.0	7,053.0	7,066.3	6,998.1	121.1	18.3	88.79	-771.0	4,464.5	644.4	505.1	139.27	4.627	
11,300.0	7,053.0	7,064.0	6,995.8	123.9	18.3	88.58	-770.9	4,464.6	620.0	478.0	142.03	4.365	
11,400.0	7,053.0	7,061.7	6,993.5	126.6	18.3	88.36	-770.9	4,464.6	611.2	466.4	144.80	4.221	
11,404.2	7,053.0	7,061.6	6,993.4	126.8	18.3	88.35	-770.9	4,464.6	611.2	466.3	144.92	4.218 CC, ES	
11,500.0	7,053.0	7,059.4	6,991.3	129.4	18.3	88.15	-770.8	4,464.7	618.6	471.1	147.56	4.192 SF	
11,582.0	7,053.0	7,057.6	6,989.4	131.7	18.3	87.97	-770.7	4,464.7	636.5	486.7	149.83	4.248	

Company:	Synergy Resources	Local Co-ordinate Reference:	Well SRC Wiedeman A-5-4NHZ
Project:	Sec.5-T5N-R66W	TVD Reference:	WELL @ 4796.0ft (RKB - 13')
Reference Site:	SRC Wiedeman Pad Sec.5-T5N-R66W	MD Reference:	WELL @ 4796.0ft (RKB - 13')
Site Error:	0.0ft	North Reference:	True
Reference Well:	SRC Wiedeman A-5-4NHZ	Survey Calculation Method:	Minimum Curvature
Well Error:	0.0ft	Output errors are at	2.00 sigma
Reference Wellbore	Wellbore #1	Database:	Landmark
Reference Design:	Plan #1 (6-24-14)	Offset TVD Reference:	Offset Datum

Offset Design Northridge Pad Sec.4-T5N-R66W - Northridge 4AD (Exist.) - Wellbore #1 - Wellbore #1												Offset Site Error:	0.0 ft
Survey Program: 182-MWD												Offset Well Error:	0.0 ft
Reference		Offset		Semi Major Axis			Distance						
Measured Depth (ft)	Vertical Depth (ft)	Measured Depth (ft)	Vertical Depth (ft)	Reference (ft)	Offset (ft)	Highside Toolface (°)	Offset Wellbore Centre +N/-S (ft)	+E/-W (ft)	Between Centres (ft)	Between Ellipses (ft)	Minimum Separation (ft)	Separation Factor	Warning
9,900.0	7,053.0	7,226.1	7,036.4	85.0	28.7	-101.42	-37.5	3,908.4	968.3	859.0	109.32	8.858	
10,000.0	7,053.0	7,223.7	7,034.0	87.8	28.7	-100.42	-37.5	3,908.5	869.4	757.0	112.38	7.736	
10,100.0	7,053.0	7,221.3	7,031.6	90.6	28.7	-99.37	-37.5	3,908.6	770.7	655.3	115.45	6.676	
10,200.0	7,053.0	7,218.7	7,029.0	93.3	28.7	-98.28	-37.6	3,908.6	672.4	553.9	118.51	5.674	
10,300.0	7,053.0	7,216.1	7,026.4	96.1	28.7	-97.14	-37.6	3,908.7	574.7	453.2	121.55	4.728	
10,400.0	7,053.0	7,213.4	7,023.6	98.9	28.7	-95.96	-37.6	3,908.8	477.9	353.3	124.58	3.836	
10,500.0	7,053.0	7,210.5	7,020.8	101.6	28.7	-94.72	-37.6	3,908.9	382.7	255.2	127.59	3.000	
10,600.0	7,053.0	7,207.6	7,017.8	104.4	28.7	-93.44	-37.6	3,909.0	290.8	160.2	130.56	2.227	
10,700.0	7,053.0	7,204.5	7,014.8	107.2	28.7	-92.10	-37.6	3,909.1	206.4	73.0	133.48	1.547	
10,800.0	7,053.0	7,201.3	7,011.6	110.0	28.7	-90.70	-37.6	3,909.2	143.7	7.4	136.34	1.054 Level 2	
10,860.0	7,053.0	7,199.3	7,009.6	111.6	28.7	-89.83	-37.6	3,909.2	130.6	-7.4	138.02	0.946 Level 1, CC, ES, SF	
10,900.0	7,053.0	7,198.0	7,008.3	112.7	28.7	-89.24	-37.6	3,909.3	136.6	-2.5	139.13	0.982 Level 1	
11,000.0	7,053.0	7,194.5	7,004.8	115.5	28.7	-87.73	-37.6	3,909.4	191.4	49.6	141.83	1.350 Level 3	
11,100.0	7,053.0	7,190.9	7,001.2	118.3	28.6	-86.16	-37.6	3,909.5	273.2	128.7	144.43	1.891	
11,200.0	7,053.0	7,187.2	6,997.5	121.1	28.6	-84.52	-37.6	3,909.7	364.1	217.2	146.91	2.478	
11,300.0	7,053.0	7,183.2	6,993.6	123.9	28.6	-82.82	-37.6	3,909.8	458.8	309.5	149.24	3.074	
11,400.0	7,053.0	7,179.1	6,989.5	126.6	28.6	-81.06	-37.7	3,910.0	555.3	403.9	151.41	3.667	
11,500.0	7,053.0	7,174.9	6,985.2	129.4	28.6	-79.23	-37.7	3,910.1	652.8	499.4	153.40	4.256	
11,582.0	7,053.0	7,171.2	6,981.5	131.7	28.6	-77.69	-37.7	3,910.3	733.3	578.4	154.88	4.735	

Company:	Synergy Resources	Local Co-ordinate Reference:	Well SRC Wiedeman A-5-4NHZ
Project:	Sec.5-T5N-R66W	TVD Reference:	WELL @ 4796.0ft (RKB - 13')
Reference Site:	SRC Wiedeman Pad Sec.5-T5N-R66W	MD Reference:	WELL @ 4796.0ft (RKB - 13')
Site Error:	0.0ft	North Reference:	True
Reference Well:	SRC Wiedeman A-5-4NHZ	Survey Calculation Method:	Minimum Curvature
Well Error:	0.0ft	Output errors are at	2.00 sigma
Reference Wellbore	Wellbore #1	Database:	Landmark
Reference Design:	Plan #1 (6-24-14)	Offset TVD Reference:	Offset Datum

Offset Design												Offset Site Error:	0.0 ft
SRC Kelly Farms Pad Sec.4-T5N-R66W - SRC Kelly Farms 12-4-3CHZ - Wellbore #1 - Plan #3 (6-19-1												Offset Well Error:	0.0 ft
Survey Program: 0-MWD													
Reference		Offset		Semi Major Axis			Distance						
Measured Depth (ft)	Vertical Depth (ft)	Measured Depth (ft)	Vertical Depth (ft)	Reference (ft)	Offset (ft)	Highside Toolface (°)	Offset Wellbore Centre +N/-S (ft)	+E/-W (ft)	Between Centres (ft)	Between Ellipses (ft)	Minimum Separation (ft)	Separation Factor	Warning
10,900.0	7,053.0	6,724.6	6,715.0	112.7	14.8	52.65	-556.7	4,781.3	966.6	862.6	104.05	9.290	
11,000.0	7,053.0	6,750.0	6,738.7	115.5	14.8	54.86	-556.8	4,790.5	882.7	773.7	108.99	8.099	
11,100.0	7,053.0	6,750.0	6,738.7	118.3	14.8	54.86	-556.8	4,790.5	801.5	690.2	111.30	7.202	
11,200.0	7,053.0	6,783.1	6,769.1	121.1	14.9	57.88	-556.9	4,803.5	723.8	606.6	117.21	6.175	
11,300.0	7,053.0	6,800.0	6,784.4	123.9	15.0	59.48	-556.9	4,810.7	650.9	529.5	121.44	5.360	
11,400.0	7,053.0	6,836.7	6,817.0	126.6	15.1	63.08	-557.0	4,827.4	583.9	456.1	127.79	4.569	
11,500.0	7,053.0	6,869.7	6,845.8	129.4	15.2	66.45	-557.2	4,843.7	524.7	391.0	133.65	3.926	
11,582.0	7,053.0	6,900.0	6,871.5	131.7	15.3	69.60	-557.3	4,859.6	483.5	344.9	138.59	3.489 CC, ES, SF	

Company:	Synergy Resources	Local Co-ordinate Reference:	Well SRC Wiedeman A-5-4NHZ
Project:	Sec.5-T5N-R66W	TVD Reference:	WELL @ 4796.0ft (RKB - 13')
Reference Site:	SRC Wiedeman Pad Sec.5-T5N-R66W	MD Reference:	WELL @ 4796.0ft (RKB - 13')
Site Error:	0.0ft	North Reference:	True
Reference Well:	SRC Wiedeman A-5-4NHZ	Survey Calculation Method:	Minimum Curvature
Well Error:	0.0ft	Output errors are at	2.00 sigma
Reference Wellbore	Wellbore #1	Database:	Landmark
Reference Design:	Plan #1 (6-24-14)	Offset TVD Reference:	Offset Datum

Offset Design SRC Kelly Farms Pad Sec.4-T5N-R66W - SRC Kelly Farms 22-4-3CHZ - Wellbore #1 - Wellbore #1												Offset Site Error:	0.0 ft
Survey Program: 80-MWD												Offset Well Error:	0.0 ft
Reference		Offset		Semi Major Axis			Distance						
Measured Depth (ft)	Vertical Depth (ft)	Measured Depth (ft)	Vertical Depth (ft)	Reference (ft)	Offset (ft)	Highside Toolface (°)	Offset Wellbore Centre +N/-S (ft)	+E/-W (ft)	Between Centres (ft)	Between Ellipses (ft)	Minimum Separation (ft)	Separation Factor	Warning
11,100.0	7,053.0	6,795.0	6,779.0	118.3	14.6	69.46	-809.1	4,870.4	996.4	871.2	125.21	7.958	
11,200.0	7,053.0	6,795.0	6,779.0	121.1	14.6	69.46	-809.1	4,870.4	927.9	800.1	127.83	7.259	
11,300.0	7,053.0	6,819.4	6,801.5	123.9	14.7	71.20	-808.7	4,879.9	864.8	733.0	131.79	6.562	
11,400.0	7,053.0	6,840.8	6,821.0	126.6	14.8	72.74	-808.4	4,888.8	808.3	672.7	135.55	5.963	
11,500.0	7,053.0	6,883.0	6,858.4	129.4	14.9	75.77	-808.2	4,908.3	759.7	619.5	140.21	5.419	
11,582.0	7,053.0	6,883.0	6,858.4	131.7	14.9	75.77	-808.2	4,908.3	725.9	583.5	142.43	5.097 CC, ES, SF	

Company:	Synergy Resources	Local Co-ordinate Reference:	Well SRC Wiedeman A-5-4NHZ
Project:	Sec.5-T5N-R66W	TVD Reference:	WELL @ 4796.0ft (RKB - 13')
Reference Site:	SRC Wiedeman Pad Sec.5-T5N-R66W	MD Reference:	WELL @ 4796.0ft (RKB - 13')
Site Error:	0.0ft	North Reference:	True
Reference Well:	SRC Wiedeman A-5-4NHZ	Survey Calculation Method:	Minimum Curvature
Well Error:	0.0ft	Output errors are at	2.00 sigma
Reference Wellbore	Wellbore #1	Database:	Landmark
Reference Design:	Plan #1 (6-24-14)	Offset TVD Reference:	Offset Datum

Offset Design												Offset Site Error:	0.0 ft
SRC Kelly Farms Pad Sec.4-T5N-R66W - SRC Kelly Farms A-4-3CHZ - Wellbore #1 - Wellbore #1												Offset Well Error:	0.0 ft
Survey Program: 79-MWD													
Reference		Offset		Semi Major Axis			Distance						
Measured Depth (ft)	Vertical Depth (ft)	Measured Depth (ft)	Vertical Depth (ft)	Reference (ft)	Offset (ft)	Highside Toolface (°)	Offset Wellbore Centre +N/-S (ft)	+E/-W (ft)	Between Centres (ft)	Between Ellipses (ft)	Minimum Separation (ft)	Separation Factor	Warning
10,900.0	7,053.0	6,768.1	6,742.9	112.7	14.9	35.19	-350.9	4,870.6	978.2	898.7	79.53	12.301	
11,000.0	7,053.0	6,797.0	6,770.5	115.5	15.0	38.30	-352.6	4,879.1	885.2	799.2	86.03	10.289	
11,100.0	7,053.0	6,797.0	6,770.5	118.3	15.0	38.30	-352.6	4,879.1	792.9	705.0	87.84	9.026	
11,200.0	7,053.0	6,797.0	6,770.5	121.1	15.0	38.30	-352.6	4,879.1	702.6	613.0	89.65	7.837	
11,300.0	7,053.0	6,829.9	6,801.5	123.9	15.0	42.29	-354.5	4,890.1	613.6	515.8	97.84	6.272	
11,400.0	7,053.0	6,849.8	6,819.8	126.6	15.1	44.94	-355.6	4,897.6	527.8	423.9	103.94	5.079	
11,500.0	7,053.0	6,886.0	6,852.6	129.4	15.2	50.26	-357.5	4,912.9	446.4	332.4	113.97	3.917	
11,582.0	7,053.0	6,886.0	6,852.6	131.7	15.2	50.26	-357.5	4,912.9	383.6	267.9	115.76	3.314 CC, ES, SF	

Company:	Synergy Resources	Local Co-ordinate Reference:	Well SRC Wiedeman A-5-4NHZ
Project:	Sec.5-T5N-R66W	TVD Reference:	WELL @ 4796.0ft (RKB - 13')
Reference Site:	SRC Wiedeman Pad Sec.5-T5N-R66W	MD Reference:	WELL @ 4796.0ft (RKB - 13')
Site Error:	0.0ft	North Reference:	True
Reference Well:	SRC Wiedeman A-5-4NHZ	Survey Calculation Method:	Minimum Curvature
Well Error:	0.0ft	Output errors are at	2.00 sigma
Reference Wellbore	Wellbore #1	Database:	Landmark
Reference Design:	Plan #1 (6-24-14)	Offset TVD Reference:	Offset Datum

Offset Design												Offset Site Error:	0.0 ft
SRC Kelly Farms Pad Sec.4-T5N-R66W - SRC Kelly Farms A-4-3NHZ - Wellbore #1 - Wellbore #1												Offset Well Error:	0.0 ft
Survey Program: 174-MWD													
Reference		Offset		Semi Major Axis			Distance						
Measured Depth (ft)	Vertical Depth (ft)	Measured Depth (ft)	Vertical Depth (ft)	Reference (ft)	Offset (ft)	Highside Toolface (°)	Offset Wellbore Centre +N/-S (ft)	+E/-W (ft)	Between Centres (ft)	Between Ellipses (ft)	Minimum Separation (ft)	Separation Factor	Warning
10,900.0	7,053.0	6,615.0	6,573.5	112.7	16.3	-4.70	-117.5	4,821.4	980.9	942.1	38.83	25.260	
11,000.0	7,053.0	6,650.6	6,605.6	115.5	16.4	-5.40	-114.7	4,836.7	891.2	851.1	40.07	22.242	
11,100.0	7,053.0	6,667.5	6,620.3	118.3	16.5	-5.74	-113.6	4,844.8	803.9	762.8	41.09	19.566	
11,200.0	7,053.0	6,704.0	6,651.1	121.1	16.6	-6.47	-111.6	4,864.3	719.1	676.7	42.47	16.933	
11,300.0	7,053.0	6,704.0	6,651.1	123.9	16.6	-6.47	-111.6	4,864.3	635.9	592.7	43.25	14.704	
11,400.0	7,053.0	6,740.8	6,680.7	126.6	16.7	-7.25	-109.9	4,886.0	556.0	511.2	44.78	12.416	
11,500.0	7,053.0	6,794.0	6,721.1	129.4	17.0	-8.56	-107.4	4,920.5	480.0	433.0	47.00	10.214	
11,582.0	7,053.0	6,814.1	6,735.8	131.7	17.0	-9.12	-106.6	4,934.3	419.5	371.2	48.35	8.676 CC, ES, SF	

Company:	Synergy Resources	Local Co-ordinate Reference:	Well SRC Wiedeman A-5-4NHZ
Project:	Sec.5-T5N-R66W	TVD Reference:	WELL @ 4796.0ft (RKB - 13')
Reference Site:	SRC Wiedeman Pad Sec.5-T5N-R66W	MD Reference:	WELL @ 4796.0ft (RKB - 13')
Site Error:	0.0ft	North Reference:	True
Reference Well:	SRC Wiedeman A-5-4NHZ	Survey Calculation Method:	Minimum Curvature
Well Error:	0.0ft	Output errors are at	2.00 sigma
Reference Wellbore	Wellbore #1	Database:	Landmark
Reference Design:	Plan #1 (6-24-14)	Offset TVD Reference:	Offset Datum

Offset Design SRC Wiedeman Pad Sec.5-T5N-R66W - SRC Wiedeman 22-5-4CHZ - Wellbore #1 - Plan #1 (6-24-14)													Offset Site Error:	0.0 ft
Survey Program: 0-MWD													Offset Well Error:	0.0 ft
Reference		Offset		Semi Major Axis			Distance							Warning
Measured Depth (ft)	Vertical Depth (ft)	Measured Depth (ft)	Vertical Depth (ft)	Reference (ft)	Offset (ft)	Highside Toolface (°)	Offset Wellbore Centre +N/-S (ft)	+E/-W (ft)	Between Centres (ft)	Between Ellipses (ft)	Minimum Separation (ft)	Separation Factor		
0.0	0.0	0.0	0.0	0.0	0.0	-174.68	-44.8	-4.2	45.0					
100.0	100.0	100.0	100.0	0.1	0.1	-174.68	-44.8	-4.2	45.0	44.8	0.22	200.230		
200.0	200.0	200.0	200.0	0.3	0.3	-174.68	-44.8	-4.2	45.0	44.3	0.67	66.743		
300.0	300.0	300.0	300.0	0.6	0.6	-174.68	-44.8	-4.2	45.0	43.9	1.12	40.046		
400.0	400.0	400.0	400.0	0.8	0.8	-174.68	-44.8	-4.2	45.0	43.4	1.57	28.604		
500.0	500.0	500.0	500.0	1.0	1.0	-174.68	-44.8	-4.2	45.0	43.0	2.02	22.248		
600.0	600.0	600.0	600.0	1.2	1.2	-174.68	-44.8	-4.2	45.0	42.5	2.47	18.203		
700.0	700.0	700.0	700.0	1.5	1.5	-174.68	-44.8	-4.2	45.0	42.1	2.92	15.402		
800.0	800.0	800.0	800.0	1.7	1.7	-174.68	-44.8	-4.2	45.0	41.6	3.37	13.349 CC, ES		
900.0	900.0	898.4	898.4	1.9	1.9	-174.28	-46.4	-4.7	46.7	42.9	3.79	12.318		
1,000.0	1,000.0	996.7	996.5	2.1	2.1	-173.24	-51.3	-6.1	51.8	47.6	4.19	12.343		
1,100.0	1,100.0	1,094.4	1,093.9	2.4	2.3	-171.91	-59.3	-8.4	60.2	55.6	4.61	13.062		
1,200.0	1,200.0	1,191.5	1,190.3	2.6	2.5	-170.57	-70.4	-11.7	72.1	67.0	5.04	14.286		
1,300.0	1,300.0	1,287.6	1,285.3	2.8	2.7	-169.39	-84.5	-15.8	87.3	81.8	5.50	15.872		
1,400.0	1,400.0	1,385.6	1,381.7	3.0	3.0	-168.44	-101.0	-20.6	104.7	98.7	5.97	17.528		
1,500.0	1,500.0	1,484.3	1,478.9	3.2	3.3	-27.30	-117.6	-25.5	120.6	114.3	6.30	19.134		
1,600.0	1,599.8	1,583.4	1,576.5	3.4	3.7	-27.63	-134.2	-30.4	133.5	126.8	6.70	19.936		
1,681.5	1,681.0	1,664.5	1,656.3	3.6	3.9	-28.36	-147.9	-34.4	141.7	134.7	7.03	20.173		
1,700.0	1,699.5	1,682.9	1,674.5	3.6	4.0	-28.58	-151.0	-35.3	143.4	136.3	7.10	20.183		
1,800.0	1,799.0	1,782.5	1,772.5	3.8	4.4	-29.68	-167.7	-40.2	152.3	144.8	7.53	20.216		
1,900.0	1,898.5	1,882.0	1,870.5	4.0	4.7	-30.67	-184.5	-45.1	161.3	153.3	7.98	20.218		
2,000.0	1,998.0	1,981.6	1,968.5	4.3	5.1	-31.55	-201.2	-50.1	170.3	161.9	8.43	20.204		
2,100.0	2,097.5	2,081.2	2,066.5	4.5	5.5	-32.34	-218.0	-55.0	179.4	170.5	8.89	20.175		
2,200.0	2,197.0	2,180.7	2,164.5	4.7	5.9	-33.05	-234.7	-59.9	188.5	179.1	9.36	20.136		
2,300.0	2,296.6	2,280.3	2,262.6	5.0	6.2	-33.70	-251.5	-64.8	197.6	187.7	9.84	20.089		
2,400.0	2,396.1	2,379.8	2,360.6	5.2	6.6	-34.29	-268.2	-69.7	206.7	196.4	10.32	20.036		
2,500.0	2,495.6	2,479.4	2,458.6	5.5	7.0	-34.83	-285.0	-74.6	215.9	205.1	10.80	19.980		
2,600.0	2,595.1	2,579.0	2,556.6	5.7	7.4	-35.33	-301.7	-79.5	225.0	213.7	11.30	19.922		
2,700.0	2,694.6	2,678.5	2,654.6	6.0	7.8	-35.79	-318.5	-84.5	234.2	222.4	11.79	19.862		
2,800.0	2,794.2	2,778.1	2,752.7	6.3	8.2	-36.21	-335.2	-89.4	243.4	231.1	12.29	19.801		
2,900.0	2,893.7	2,877.6	2,850.7	6.5	8.6	-36.61	-352.0	-94.3	252.7	239.9	12.80	19.741		
3,000.0	2,993.2	2,977.2	2,948.7	6.8	9.0	-36.97	-368.7	-99.2	261.9	248.6	13.31	19.682		
3,100.0	3,092.7	3,076.8	3,046.7	7.1	9.4	-37.31	-385.4	-104.1	271.1	257.3	13.82	19.623		
3,200.0	3,192.2	3,176.3	3,144.7	7.4	9.8	-37.63	-402.2	-109.0	280.4	266.0	14.33	19.565		
3,300.0	3,291.7	3,275.9	3,242.7	7.6	10.2	-37.93	-418.9	-113.9	289.6	274.8	14.85	19.509		
3,400.0	3,391.3	3,375.4	3,340.8	7.9	10.6	-38.21	-435.7	-118.8	298.9	283.5	15.36	19.454		
3,500.0	3,490.8	3,475.0	3,438.8	8.2	11.0	-38.47	-452.4	-123.8	308.1	292.3	15.88	19.400		
3,600.0	3,590.3	3,574.6	3,536.8	8.5	11.4	-38.72	-469.2	-128.7	317.4	301.0	16.41	19.348		
3,700.0	3,689.8	3,674.1	3,634.8	8.8	11.8	-38.95	-485.9	-133.6	326.7	309.8	16.93	19.298		
3,800.0	3,789.3	3,773.7	3,732.8	9.1	12.2	-39.17	-502.7	-138.5	336.0	318.5	17.45	19.249		
3,900.0	3,888.8	3,873.2	3,830.9	9.3	12.6	-39.38	-519.4	-143.4	345.3	327.3	17.98	19.202		
4,000.0	3,988.4	3,972.8	3,928.9	9.6	13.0	-39.58	-536.2	-148.3	354.6	336.1	18.51	19.156		
4,100.0	4,087.9	4,072.4	4,026.9	9.9	13.4	-39.76	-552.9	-153.2	363.9	344.8	19.04	19.112		
4,200.0	4,187.4	4,171.9	4,124.9	10.2	13.8	-39.94	-569.7	-158.1	373.2	353.6	19.57	19.069		
4,300.0	4,286.9	4,271.5	4,222.9	10.5	14.2	-40.11	-586.4	-163.1	382.5	362.4	20.10	19.028		
4,400.0	4,386.4	4,371.0	4,320.9	10.8	14.6	-40.27	-603.2	-168.0	391.8	371.1	20.63	18.988		
4,432.7	4,419.0	4,403.6	4,353.0	10.9	14.7	-40.32	-608.6	-169.6	394.8	374.0	20.81	18.975		
4,500.0	4,486.0	4,470.5	4,418.9	11.0	15.0	-40.44	-619.9	-172.9	401.7	380.5	21.14	19.000		
4,600.0	4,585.9	4,569.8	4,516.6	11.2	15.4	-40.38	-636.6	-177.8	414.1	392.5	21.58	19.189		
4,700.0	4,685.8	4,668.5	4,613.8	11.4	15.8	-40.07	-653.2	-182.6	429.2	407.2	21.97	19.532		
4,714.2	4,700.0	4,682.5	4,627.6	11.4	15.8	179.31	-655.6	-183.3	431.5	405.1	26.40	16.345		
4,800.0	4,785.8	4,767.0	4,710.8	11.6	16.1	179.87	-669.8	-187.5	445.9	419.0	26.93	16.560		

CC - Min centre to center distance or convergent point, SF - min separation factor, ES - min ellipse separation

Company:	Synergy Resources	Local Co-ordinate Reference:	Well SRC Wiedeman A-5-4NHZ
Project:	Sec.5-T5N-R66W	TVD Reference:	WELL @ 4796.0ft (RKB - 13')
Reference Site:	SRC Wiedeman Pad Sec.5-T5N-R66W	MD Reference:	WELL @ 4796.0ft (RKB - 13')
Site Error:	0.0ft	North Reference:	True
Reference Well:	SRC Wiedeman A-5-4NHZ	Survey Calculation Method:	Minimum Curvature
Well Error:	0.0ft	Output errors are at	2.00 sigma
Reference Wellbore	Wellbore #1	Database:	Landmark
Reference Design:	Plan #1 (6-24-14)	Offset TVD Reference:	Offset Datum

Offset Design SRC Wiedeman Pad Sec.5-T5N-R66W - SRC Wiedeman 22-5-4CHZ - Wellbore #1 - Plan #1 (6-24-14)												Offset Site Error:	0.0 ft
Survey Program: 0-MWD												Offset Well Error:	0.0 ft
Reference		Offset		Semi Major Axis			Distance						
Measured Depth (ft)	Vertical Depth (ft)	Measured Depth (ft)	Vertical Depth (ft)	Reference (ft)	Offset (ft)	Highside Toolface (°)	Offset Wellbore Centre +N/-S (ft)	+E/-W (ft)	Between Centres (ft)	Between Ellipses (ft)	Minimum Separation (ft)	Separation Factor	Warning
4,900.0	4,885.8	4,865.4	4,807.7	11.8	16.5	-179.51	-686.3	-192.4	462.8	435.3	27.54	16.807	
5,000.0	4,985.8	4,963.9	4,904.6	11.9	16.9	-178.94	-702.9	-197.2	479.7	451.6	28.14	17.046	
5,100.0	5,085.8	5,062.3	5,001.5	12.1	17.3	-178.41	-719.5	-202.1	496.6	467.9	28.75	17.277	
5,200.0	5,185.8	5,160.8	5,098.5	12.3	17.7	-177.91	-736.0	-206.9	513.6	484.3	29.35	17.500	
5,300.0	5,285.8	5,259.2	5,195.4	12.5	18.1	-177.44	-752.6	-211.8	530.7	500.7	29.96	17.715	
5,400.0	5,385.8	5,357.7	5,292.3	12.7	18.5	-177.01	-769.1	-216.7	547.7	517.2	30.56	17.923	
5,500.0	5,485.8	5,456.2	5,389.3	12.8	18.9	-176.60	-785.7	-221.5	564.8	533.6	31.16	18.124	
5,600.0	5,585.8	5,554.6	5,486.2	13.0	19.3	-176.21	-802.3	-226.4	581.9	550.1	31.77	18.318	
5,700.0	5,685.8	5,653.1	5,583.1	13.2	19.7	-175.85	-818.8	-231.2	599.0	566.7	32.37	18.506	
5,800.0	5,785.8	5,751.5	5,680.0	13.4	20.1	-175.50	-835.4	-236.1	616.2	583.2	32.97	18.688	
5,900.0	5,885.8	5,850.0	5,777.0	13.6	20.5	-175.18	-851.9	-240.9	633.4	599.8	33.58	18.863	
6,000.0	5,985.8	5,970.5	5,896.0	13.8	20.9	-174.83	-870.6	-246.4	649.3	615.1	34.15	19.012	
6,100.0	6,085.8	6,098.6	6,023.1	14.0	21.2	-174.57	-885.2	-250.7	660.9	626.3	34.65	19.073	
6,200.0	6,185.8	6,227.7	6,151.9	14.2	21.4	-174.42	-894.4	-253.4	668.2	633.1	35.09	19.043	
6,300.0	6,285.8	6,357.5	6,281.6	14.4	21.6	-174.36	-898.0	-254.5	671.1	635.6	35.48	18.913	
6,351.0	6,336.8	6,412.7	6,336.8	14.4	21.7	-174.36	-898.1	-254.5	671.1	635.5	35.65	18.824	
6,400.0	6,385.8	6,461.7	6,385.8	14.5	21.7	96.64	-898.1	-254.5	671.3	642.2	29.09	23.075	
6,450.0	6,435.5	6,511.4	6,435.5	14.6	21.8	97.02	-898.1	-254.5	671.9	642.7	29.21	23.004	
6,500.0	6,484.8	6,560.7	6,484.8	14.7	21.8	97.65	-898.1	-254.5	673.0	643.7	29.30	22.972	
6,550.0	6,533.3	6,613.5	6,537.6	14.7	21.9	98.54	-898.1	-253.9	674.7	645.3	29.36	22.977	
6,600.0	6,580.8	6,670.9	6,594.7	14.8	22.0	99.50	-898.0	-249.2	676.6	647.1	29.42	22.997	
6,650.0	6,627.2	6,729.5	6,652.6	14.8	22.0	100.42	-897.8	-239.7	678.5	649.0	29.46	23.028	
6,700.0	6,672.2	6,789.4	6,710.6	14.8	22.0	101.28	-897.6	-225.2	680.5	651.0	29.51	23.062	
6,750.0	6,715.5	6,850.4	6,768.4	14.9	22.0	102.09	-897.3	-205.4	682.4	652.9	29.56	23.089	
6,800.0	6,757.0	6,912.7	6,825.3	14.9	22.1	102.83	-896.9	-180.3	684.3	654.7	29.63	23.095	
6,850.0	6,796.4	6,976.1	6,880.8	15.0	22.1	103.51	-896.5	-149.7	686.2	656.4	29.75	23.063	
6,900.0	6,833.6	7,040.5	6,934.2	15.0	22.0	104.10	-895.9	-113.7	687.8	657.9	29.94	22.976	
6,950.0	6,868.4	7,105.8	6,984.9	15.1	22.0	104.61	-895.3	-72.5	689.3	659.1	30.22	22.808	
7,000.0	6,900.6	7,172.0	7,032.1	15.3	22.0	105.02	-894.6	-26.2	690.5	659.9	30.64	22.535	
7,050.0	6,930.0	7,238.8	7,075.3	15.7	22.0	105.34	-893.8	24.7	691.5	660.3	31.22	22.148	
7,100.0	6,956.6	7,306.0	7,113.7	16.1	22.1	105.56	-893.0	79.9	692.1	660.1	31.99	21.637	
7,150.0	6,980.1	7,373.6	7,147.0	16.7	22.1	105.67	-892.1	138.7	692.5	659.5	32.99	20.992	
7,200.0	7,000.5	7,441.3	7,174.7	17.3	22.2	105.67	-891.1	200.4	692.5	658.3	34.20	20.245	
7,250.0	7,017.6	7,508.9	7,196.3	18.0	22.4	105.56	-890.2	264.4	692.1	656.5	35.65	19.413	
7,300.0	7,031.5	7,576.2	7,211.8	18.8	22.8	105.35	-889.2	329.9	691.5	654.2	37.32	18.528	
7,350.0	7,041.9	7,643.0	7,221.0	19.6	23.4	105.04	-888.1	396.0	690.5	651.4	39.17	17.630	
7,400.0	7,049.0	7,709.1	7,224.0	20.6	24.2	104.63	-887.1	462.0	689.3	648.1	41.17	16.741	
7,450.0	7,052.5	7,758.9	7,224.0	21.5	25.0	104.41	-886.4	511.8	688.4	645.4	42.98	16.017	
7,476.0	7,053.0	7,784.9	7,224.0	22.0	25.4	104.39	-886.0	537.8	688.3	644.3	43.92	15.672	
7,500.0	7,053.0	7,808.9	7,224.0	22.5	25.8	104.39	-885.6	561.8	688.3	643.4	44.85	15.346	
7,600.0	7,053.0	7,908.9	7,224.0	24.6	27.7	104.39	-884.1	661.8	688.2	639.3	48.93	14.067	
7,700.0	7,053.0	8,008.9	7,224.0	26.9	29.8	104.39	-882.6	761.8	688.2	635.0	53.25	12.924	
7,800.0	7,053.0	8,108.9	7,224.0	29.2	32.0	104.39	-881.0	861.8	688.2	630.5	57.77	11.914	
7,900.0	7,053.0	8,208.9	7,224.0	31.6	34.3	104.39	-879.5	961.8	688.2	625.8	62.43	11.023	
8,000.0	7,053.0	8,308.9	7,224.0	34.1	36.7	104.39	-878.0	1,061.8	688.2	621.0	67.21	10.239	
8,100.0	7,053.0	8,408.9	7,224.0	36.6	39.1	104.39	-876.5	1,161.8	688.2	616.1	72.09	9.546	
8,200.0	7,053.0	8,508.9	7,224.0	39.1	41.6	104.39	-874.9	1,261.7	688.2	611.1	77.05	8.932	
8,300.0	7,053.0	8,608.9	7,224.0	41.7	44.1	104.39	-873.4	1,361.7	688.2	606.1	82.06	8.386	
8,400.0	7,053.0	8,708.9	7,224.0	44.4	46.7	104.39	-871.9	1,461.7	688.1	601.0	87.13	7.898	
8,500.0	7,053.0	8,808.9	7,224.0	47.0	49.3	104.39	-870.4	1,561.7	688.1	595.9	92.24	7.460	
8,600.0	7,053.0	8,908.9	7,224.0	49.6	51.9	104.39	-868.8	1,661.7	688.1	590.7	97.39	7.065	
8,700.0	7,053.0	9,008.9	7,224.0	52.3	54.5	104.39	-867.3	1,761.7	688.1	585.5	102.57	6.708	

CC - Min centre to center distance or convergent point, SF - min separation factor, ES - min ellipse separation

Company:	Synergy Resources	Local Co-ordinate Reference:	Well SRC Wiedeman A-5-4NHZ
Project:	Sec.5-T5N-R66W	TVD Reference:	WELL @ 4796.0ft (RKB - 13')
Reference Site:	SRC Wiedeman Pad Sec.5-T5N-R66W	MD Reference:	WELL @ 4796.0ft (RKB - 13')
Site Error:	0.0ft	North Reference:	True
Reference Well:	SRC Wiedeman A-5-4NHZ	Survey Calculation Method:	Minimum Curvature
Well Error:	0.0ft	Output errors are at	2.00 sigma
Reference Wellbore	Wellbore #1	Database:	Landmark
Reference Design:	Plan #1 (6-24-14)	Offset TVD Reference:	Offset Datum

Offset Design SRC Wiedeman Pad Sec.5-T5N-R66W - SRC Wiedeman 22-5-4CHZ - Wellbore #1 - Plan #1 (6-24-14)													Offset Site Error:	0.0 ft
Survey Program: 0-MWD													Offset Well Error:	0.0 ft
Reference		Offset		Semi Major Axis			Distance						Warning	
Measured Depth (ft)	Vertical Depth (ft)	Measured Depth (ft)	Vertical Depth (ft)	Reference (ft)	Offset (ft)	Highside Toolface (°)	Offset Wellbore Centre +N/-S (ft)	+E/-W (ft)	Between Centres (ft)	Between Ellipses (ft)	Minimum Separation (ft)	Separation Factor		
8,800.0	7,053.0	9,108.9	7,224.0	55.0	57.2	104.39	-865.8	1,861.7	688.1	580.3	107.78	6.384		
8,900.0	7,053.0	9,208.9	7,224.0	57.7	59.8	104.39	-864.3	1,961.7	688.1	575.1	113.01	6.089		
9,000.0	7,053.0	9,308.9	7,224.0	60.4	62.5	104.39	-862.7	2,061.7	688.1	569.8	118.26	5.818		
9,100.0	7,053.0	9,408.9	7,224.0	63.1	65.2	104.39	-861.2	2,161.6	688.0	564.5	123.52	5.570		
9,200.0	7,053.0	9,508.9	7,224.0	65.8	67.9	104.39	-859.7	2,261.6	688.0	559.2	128.81	5.342		
9,300.0	7,053.0	9,608.9	7,224.0	68.6	70.6	104.39	-858.2	2,361.6	688.0	553.9	134.10	5.131		
9,400.0	7,053.0	9,708.9	7,224.0	71.3	73.3	104.39	-856.6	2,461.6	688.0	548.6	139.41	4.935		
9,500.0	7,053.0	9,808.9	7,224.0	74.0	76.0	104.39	-855.1	2,561.6	688.0	543.3	144.72	4.754		
9,600.0	7,053.0	9,908.9	7,224.0	76.8	78.7	104.39	-853.6	2,661.6	688.0	537.9	150.05	4.585		
9,700.0	7,053.0	10,008.9	7,224.0	79.5	81.5	104.39	-852.1	2,761.6	688.0	532.6	155.39	4.427		
9,800.0	7,053.0	10,108.9	7,224.0	82.3	84.2	104.39	-850.5	2,861.6	688.0	527.2	160.73	4.280		
9,900.0	7,053.0	10,208.9	7,224.0	85.0	86.9	104.39	-849.0	2,961.5	687.9	521.9	166.08	4.142		
10,000.0	7,053.0	10,308.9	7,224.0	87.8	89.7	104.39	-847.5	3,061.5	687.9	516.5	171.44	4.013		
10,100.0	7,053.0	10,408.9	7,224.0	90.6	92.4	104.39	-846.0	3,161.5	687.9	511.1	176.80	3.891		
10,200.0	7,053.0	10,508.9	7,224.0	93.3	95.2	104.39	-844.4	3,261.5	687.9	505.7	182.16	3.776		
10,300.0	7,053.0	10,608.9	7,224.0	96.1	97.9	104.39	-842.9	3,361.5	687.9	500.4	187.54	3.668		
10,400.0	7,053.0	10,708.9	7,224.0	98.9	100.7	104.39	-841.4	3,461.5	687.9	495.0	192.91	3.566		
10,500.0	7,053.0	10,808.9	7,224.0	101.6	103.4	104.39	-839.9	3,561.5	687.9	489.6	198.29	3.469		
10,600.0	7,053.0	10,908.9	7,224.0	104.4	106.2	104.39	-838.3	3,661.5	687.8	484.2	203.68	3.377		
10,700.0	7,053.0	11,008.9	7,224.0	107.2	109.0	104.40	-836.8	3,761.5	687.8	478.8	209.06	3.290		
10,800.0	7,053.0	11,108.9	7,224.0	110.0	111.7	104.40	-835.3	3,861.4	687.8	473.4	214.45	3.207		
10,900.0	7,053.0	11,208.9	7,224.0	112.7	114.5	104.40	-833.7	3,961.4	687.8	468.0	219.85	3.129		
11,000.0	7,053.0	11,308.9	7,224.0	115.5	117.3	104.40	-832.2	4,061.4	687.8	462.6	225.24	3.054		
11,100.0	7,053.0	11,408.9	7,224.0	118.3	120.0	104.40	-830.7	4,161.4	687.8	457.1	230.64	2.982		
11,200.0	7,053.0	11,508.9	7,224.0	121.1	122.8	104.40	-829.2	4,261.4	687.8	451.7	236.04	2.914		
11,300.0	7,053.0	11,608.9	7,224.0	123.9	125.6	104.40	-827.6	4,361.4	687.8	446.3	241.44	2.849		
11,400.0	7,053.0	11,708.9	7,224.0	126.6	128.3	104.40	-826.1	4,461.4	687.7	440.9	246.85	2.786		
11,500.0	7,053.0	11,808.9	7,224.0	129.4	131.1	104.40	-824.6	4,561.4	687.7	435.5	252.25	2.726		
11,505.3	7,053.0	11,814.2	7,224.0	129.6	131.3	104.40	-824.5	4,566.6	687.7	435.2	252.54	2.723		
11,582.0	7,053.0	11,824.1	7,224.0	131.7	131.5	104.40	-824.4	4,576.5	691.0	436.1	254.88	2.711 SF		

Company:	Synergy Resources	Local Co-ordinate Reference:	Well SRC Wiedeman A-5-4NHZ
Project:	Sec.5-T5N-R66W	TVD Reference:	WELL @ 4796.0ft (RKB - 13')
Reference Site:	SRC Wiedeman Pad Sec.5-T5N-R66W	MD Reference:	WELL @ 4796.0ft (RKB - 13')
Site Error:	0.0ft	North Reference:	True
Reference Well:	SRC Wiedeman A-5-4NHZ	Survey Calculation Method:	Minimum Curvature
Well Error:	0.0ft	Output errors are at	2.00 sigma
Reference Wellbore	Wellbore #1	Database:	Landmark
Reference Design:	Plan #1 (6-24-14)	Offset TVD Reference:	Offset Datum

Offset Design SRC Wiedeman Pad Sec.5-T5N-R66W - SRC Wiedeman 22-5-4NHZ - Wellbore #1 - Plan #1 (6-24-14)													Offset Site Error:	0.0 ft
Survey Program: 0-MWD													Offset Well Error:	0.0 ft
Reference		Offset		Semi Major Axis			Distance							Warning
Measured Depth (ft)	Vertical Depth (ft)	Measured Depth (ft)	Vertical Depth (ft)	Reference (ft)	Offset (ft)	Highside Toolface (°)	Offset Wellbore Centre +N/-S (ft)	+E/-W (ft)	Between Centres (ft)	Between Ellipses (ft)	Minimum Separation (ft)	Separation Factor		
0.0	0.0	0.0	0.0	0.0	0.0	-174.68	-29.9	-2.8	30.0					
100.0	100.0	100.0	100.0	0.1	0.1	-174.68	-29.9	-2.8	30.0	29.8	0.22	133.486		
200.0	200.0	200.0	200.0	0.3	0.3	-174.68	-29.9	-2.8	30.0	29.3	0.67	44.495		
300.0	300.0	300.0	300.0	0.6	0.6	-174.68	-29.9	-2.8	30.0	28.9	1.12	26.697		
400.0	400.0	400.0	400.0	0.8	0.8	-174.68	-29.9	-2.8	30.0	28.4	1.57	19.069		
500.0	500.0	500.0	500.0	1.0	1.0	-174.68	-29.9	-2.8	30.0	28.0	2.02	14.832		
600.0	600.0	600.0	600.0	1.2	1.2	-174.68	-29.9	-2.8	30.0	27.5	2.47	12.135		
700.0	700.0	700.0	700.0	1.5	1.5	-174.68	-29.9	-2.8	30.0	27.1	2.92	10.268		
800.0	800.0	800.0	800.0	1.7	1.7	-174.68	-29.9	-2.8	30.0	26.6	3.37	8.899		
900.0	900.0	900.0	900.0	1.9	1.9	-174.68	-29.9	-2.8	30.0	26.2	3.82	7.852		
1,000.0	1,000.0	1,000.0	1,000.0	2.1	2.1	-174.68	-29.9	-2.8	30.0	25.7	4.27	7.026 CC, ES		
1,100.0	1,100.0	1,099.0	1,098.9	2.4	2.3	-173.91	-31.5	-3.4	31.7	27.0	4.69	6.754		
1,200.0	1,200.0	1,197.7	1,197.5	2.6	2.5	-172.03	-36.3	-5.1	36.7	31.6	5.09	7.213		
1,300.0	1,300.0	1,295.9	1,295.4	2.8	2.7	-169.85	-44.3	-7.9	45.2	39.7	5.51	8.208		
1,400.0	1,400.0	1,393.5	1,392.3	3.0	2.9	-167.89	-55.3	-11.9	57.1	51.1	5.93	9.616		
1,500.0	1,500.0	1,492.3	1,490.0	3.2	3.1	-26.20	-68.6	-16.6	69.7	63.4	6.32	11.037		
1,600.0	1,599.8	1,591.8	1,588.5	3.4	3.4	-26.59	-82.1	-21.4	79.3	72.7	6.69	11.857		
1,681.5	1,681.0	1,673.1	1,668.9	3.6	3.6	-27.64	-93.1	-25.4	84.9	77.9	7.01	12.117		
1,700.0	1,699.5	1,691.6	1,687.2	3.6	3.7	-27.95	-95.6	-26.3	85.9	78.9	7.08	12.135		
1,800.0	1,799.0	1,791.4	1,786.0	3.8	4.0	-29.52	-109.1	-31.1	91.6	84.1	7.50	12.213		
1,900.0	1,898.5	1,891.2	1,884.8	4.0	4.3	-30.90	-122.6	-35.9	97.3	89.3	7.93	12.272		
2,000.0	1,998.0	1,991.0	1,983.6	4.3	4.6	-32.13	-136.1	-40.8	103.0	94.6	8.37	12.314		
2,100.0	2,097.5	2,090.8	2,082.3	4.5	4.9	-33.23	-149.6	-45.6	108.8	100.0	8.81	12.343		
2,200.0	2,197.0	2,190.6	2,181.1	4.7	5.2	-34.22	-163.2	-50.4	114.6	105.3	9.27	12.361		
2,300.0	2,296.6	2,290.4	2,279.9	5.0	5.6	-35.11	-176.7	-55.3	120.5	110.7	9.74	12.371		
2,400.0	2,396.1	2,390.2	2,378.7	5.2	5.9	-35.92	-190.2	-60.1	126.3	116.1	10.21	12.373		
2,500.0	2,495.6	2,490.1	2,477.4	5.5	6.2	-36.66	-203.7	-64.9	132.2	121.6	10.69	12.370		
2,600.0	2,595.1	2,589.9	2,576.2	5.7	6.6	-37.33	-217.2	-69.8	138.2	127.0	11.18	12.362		
2,700.0	2,694.6	2,689.7	2,675.0	6.0	6.9	-37.95	-230.7	-74.6	144.1	132.4	11.67	12.351		
2,800.0	2,794.2	2,789.5	2,773.8	6.3	7.2	-38.52	-244.3	-79.4	150.1	137.9	12.16	12.337		
2,900.0	2,893.7	2,889.3	2,872.5	6.5	7.6	-39.05	-257.8	-84.2	156.0	143.4	12.66	12.322		
3,000.0	2,993.2	2,989.1	2,971.3	6.8	7.9	-39.53	-271.3	-89.1	162.0	148.8	13.17	12.304		
3,100.0	3,092.7	3,088.9	3,070.1	7.1	8.3	-39.99	-284.8	-93.9	168.0	154.3	13.67	12.286		
3,200.0	3,192.2	3,188.7	3,168.9	7.4	8.6	-40.41	-298.3	-98.7	174.0	159.8	14.18	12.267		
3,300.0	3,291.7	3,288.5	3,267.6	7.6	9.0	-40.80	-311.8	-103.6	180.0	165.3	14.70	12.248		
3,400.0	3,391.3	3,388.4	3,366.4	7.9	9.3	-41.17	-325.3	-108.4	186.0	170.8	15.21	12.228		
3,500.0	3,490.8	3,488.2	3,465.2	8.2	9.6	-41.51	-338.9	-113.2	192.1	176.3	15.73	12.208		
3,600.0	3,590.3	3,588.0	3,563.9	8.5	10.0	-41.84	-352.4	-118.1	198.1	181.8	16.25	12.188		
3,700.0	3,689.8	3,687.8	3,662.7	8.8	10.3	-42.14	-365.9	-122.9	204.1	187.3	16.77	12.168		
3,800.0	3,789.3	3,787.6	3,761.5	9.1	10.7	-42.43	-379.4	-127.7	210.2	192.9	17.30	12.149		
3,900.0	3,888.8	3,887.4	3,860.3	9.3	11.0	-42.70	-392.9	-132.6	216.2	198.4	17.83	12.129		
4,000.0	3,988.4	3,987.2	3,959.0	9.6	11.4	-42.96	-406.4	-137.4	222.3	203.9	18.35	12.110		
4,100.0	4,087.9	4,087.0	4,057.8	9.9	11.7	-43.20	-420.0	-142.2	228.3	209.4	18.88	12.092		
4,200.0	4,187.4	4,186.9	4,156.6	10.2	12.1	-43.43	-433.5	-147.1	234.4	215.0	19.41	12.073		
4,300.0	4,286.9	4,286.7	4,255.4	10.5	12.5	-43.65	-447.0	-151.9	240.4	220.5	19.94	12.056		
4,400.0	4,386.4	4,386.5	4,354.1	10.8	12.8	-43.86	-460.5	-156.7	246.5	226.0	20.48	12.038		
4,432.7	4,419.0	4,419.1	4,386.4	10.9	12.9	-43.92	-464.9	-158.3	248.5	227.8	20.65	12.032		
4,500.0	4,486.0	4,486.3	4,452.9	11.0	13.2	-43.99	-474.0	-161.5	253.1	232.2	20.99	12.063		
4,600.0	4,585.9	4,585.8	4,551.4	11.2	13.5	-43.69	-487.5	-166.4	262.2	240.7	21.41	12.243		
4,700.0	4,685.8	4,685.1	4,649.6	11.4	13.9	-42.94	-500.9	-171.2	273.7	251.9	21.78	12.566		
4,714.2	4,700.0	4,699.1	4,663.5	11.4	13.9	176.51	-502.8	-171.8	275.6	251.2	24.33	11.327		
4,800.0	4,785.8	4,784.0	4,747.6	11.6	14.2	177.48	-514.3	-176.0	287.0	262.1	24.84	11.554		

CC - Min centre to center distance or convergent point, SF - min separation factor, ES - min ellipse separation

Company:	Synergy Resources	Local Co-ordinate Reference:	Well SRC Wiedeman A-5-4NHZ
Project:	Sec.5-T5N-R66W	TVD Reference:	WELL @ 4796.0ft (RKB - 13')
Reference Site:	SRC Wiedeman Pad Sec.5-T5N-R66W	MD Reference:	WELL @ 4796.0ft (RKB - 13')
Site Error:	0.0ft	North Reference:	True
Reference Well:	SRC Wiedeman A-5-4NHZ	Survey Calculation Method:	Minimum Curvature
Well Error:	0.0ft	Output errors are at	2.00 sigma
Reference Wellbore	Wellbore #1	Database:	Landmark
Reference Design:	Plan #1 (6-24-14)	Offset TVD Reference:	Offset Datum

Offset Design												Offset Site Error:	0.0 ft
Survey Program: 0-MWD												Offset Well Error:	0.0 ft
Reference		Offset		Semi Major Axis			Distance						
Measured Depth (ft)	Vertical Depth (ft)	Measured Depth (ft)	Vertical Depth (ft)	Reference (ft)	Offset (ft)	Highside Toolface (°)	Offset Wellbore Centre +N/-S (ft)	+E/-W (ft)	Between Centres (ft)	Between Ellipses (ft)	Minimum Separation (ft)	Separation Factor	Warning
4,900.0	4,885.8	4,883.0	4,845.5	11.8	14.6	178.51	-527.7	-180.7	300.4	274.9	25.42	11.816	
5,000.0	4,985.8	4,981.9	4,943.4	11.9	14.9	179.46	-541.1	-185.5	313.8	287.8	26.00	12.072	
5,100.0	5,085.8	5,080.9	5,041.4	12.1	15.3	-179.67	-554.5	-190.3	327.4	300.8	26.57	12.321	
5,200.0	5,185.8	5,179.9	5,139.3	12.3	15.6	-178.87	-567.9	-195.1	341.0	313.9	27.14	12.563	
5,300.0	5,285.8	5,278.8	5,237.2	12.5	16.0	-178.14	-581.3	-199.9	354.7	327.0	27.71	12.798	
5,400.0	5,385.8	5,377.8	5,335.2	12.7	16.3	-177.45	-594.7	-204.7	368.4	340.1	28.28	13.026	
5,500.0	5,485.8	5,476.7	5,433.1	12.8	16.7	-176.82	-608.1	-209.5	382.2	353.3	28.85	13.248	
5,600.0	5,585.8	5,575.7	5,531.0	13.0	17.0	-176.23	-621.5	-214.3	396.0	366.6	29.41	13.463	
5,700.0	5,685.8	5,674.7	5,628.9	13.2	17.4	-175.68	-634.9	-219.1	409.9	379.9	29.98	13.672	
5,800.0	5,785.8	5,780.2	5,733.4	13.4	17.7	-175.14	-648.9	-224.1	423.5	392.9	30.54	13.866	
5,900.0	5,885.8	5,896.4	5,849.0	13.6	18.0	-174.72	-660.7	-228.3	433.9	402.9	31.02	13.987	
6,000.0	5,985.8	6,013.5	5,965.8	13.8	18.2	-174.46	-668.1	-230.9	440.4	409.0	31.44	14.006	
6,100.0	6,085.8	6,131.1	6,083.3	14.0	18.4	-174.37	-671.0	-232.0	443.0	411.1	31.83	13.918	
6,200.0	6,185.8	6,233.6	6,185.8	14.2	18.5	-174.36	-671.1	-232.0	443.0	410.8	32.17	13.772	
6,300.0	6,285.8	6,333.6	6,285.8	14.4	18.7	-174.36	-671.1	-232.0	443.0	410.5	32.49	13.633	
6,351.0	6,336.8	6,384.6	6,336.8	14.4	18.7	-174.36	-671.1	-232.0	443.0	410.3	32.66	13.563	
6,400.0	6,385.8	6,437.3	6,389.5	14.5	18.8	96.48	-671.0	-230.0	443.0	414.5	28.49	15.550	
6,450.0	6,435.5	6,491.0	6,442.9	14.6	18.8	96.43	-670.9	-224.1	442.9	414.3	28.63	15.470	
6,500.0	6,484.8	6,544.7	6,495.6	14.7	18.9	96.35	-670.8	-214.1	442.9	414.1	28.76	15.402	
6,550.0	6,533.3	6,598.4	6,547.4	14.7	18.9	96.23	-670.6	-200.3	442.8	413.9	28.86	15.341	
6,600.0	6,580.8	6,651.9	6,598.0	14.8	18.9	96.09	-670.3	-182.7	442.7	413.7	28.96	15.285	
6,650.0	6,627.2	6,705.3	6,646.9	14.8	19.0	95.90	-670.0	-161.4	442.5	413.4	29.06	15.228	
6,700.0	6,672.2	6,758.6	6,694.1	14.8	19.0	95.69	-669.6	-136.5	442.3	413.2	29.17	15.162	
6,750.0	6,715.5	6,811.8	6,739.1	14.9	19.0	95.45	-669.2	-108.3	442.2	412.8	29.32	15.081	
6,800.0	6,757.0	6,864.8	6,781.8	14.9	19.0	95.19	-668.7	-76.9	442.0	412.4	29.51	14.974	
6,850.0	6,796.4	6,917.6	6,822.0	15.0	19.0	94.89	-668.2	-42.6	441.8	412.0	29.78	14.832	
6,900.0	6,833.6	6,970.2	6,859.3	15.0	19.0	94.57	-667.6	-5.6	441.6	411.4	30.15	14.647	
6,950.0	6,868.4	7,022.7	6,893.8	15.1	19.0	94.23	-667.0	33.9	441.3	410.7	30.63	14.410	
7,000.0	6,900.6	7,074.8	6,925.1	15.3	19.0	93.87	-666.4	75.7	441.1	409.9	31.24	14.120	
7,050.0	6,930.0	7,126.8	6,953.1	15.7	19.1	93.48	-665.7	119.4	441.0	408.9	32.02	13.773	
7,100.0	6,956.6	7,178.6	6,977.9	16.1	19.1	93.09	-665.0	164.8	440.8	407.8	32.96	13.375	
7,150.0	6,980.1	7,230.1	6,999.1	16.7	19.3	92.67	-664.3	211.7	440.6	406.5	34.07	12.934	
7,200.0	7,000.5	7,281.3	7,016.9	17.3	19.5	92.25	-663.6	259.7	440.5	405.1	35.35	12.461	
7,250.0	7,017.6	7,332.3	7,031.2	18.0	20.0	91.81	-662.9	308.7	440.3	403.6	36.79	11.968	
7,300.0	7,031.5	7,383.1	7,041.9	18.8	20.6	91.37	-662.1	358.3	440.2	401.9	38.39	11.469	
7,350.0	7,041.9	7,433.6	7,049.0	19.6	21.4	90.92	-661.3	408.3	440.2	400.1	40.11	10.973	
7,400.0	7,049.0	7,483.8	7,052.5	20.6	22.2	90.46	-660.6	458.4	440.1	398.2	41.95	10.491	
7,450.0	7,052.5	7,533.8	7,053.0	21.5	23.1	90.06	-659.8	508.4	440.1	396.2	43.89	10.027	
7,476.0	7,053.0	7,559.8	7,053.0	22.0	23.6	90.00	-659.4	534.3	440.1	395.2	44.93	9.796	
7,500.0	7,053.0	7,583.8	7,053.0	22.5	24.1	90.00	-659.1	558.3	440.1	394.2	45.89	9.590	
7,600.0	7,053.0	7,683.8	7,053.0	24.6	26.2	90.00	-657.5	658.3	440.1	390.0	50.12	8.781	
7,700.0	7,053.0	7,783.8	7,053.0	26.9	28.4	90.00	-656.0	758.3	440.1	385.5	54.59	8.061	
7,800.0	7,053.0	7,883.8	7,053.0	29.2	30.7	90.00	-654.5	858.3	440.1	380.8	59.26	7.426	
7,900.0	7,053.0	7,983.8	7,053.0	31.6	33.0	90.00	-653.0	958.3	440.1	376.0	64.08	6.867	
8,000.0	7,053.0	8,083.8	7,053.0	34.1	35.5	90.00	-651.5	1,058.3	440.1	371.0	69.02	6.376	
8,100.0	7,053.0	8,183.8	7,053.0	36.6	38.0	90.00	-650.0	1,158.3	440.1	366.0	74.06	5.942	
8,200.0	7,053.0	8,283.8	7,053.0	39.1	40.5	90.00	-648.4	1,258.3	440.1	360.9	79.17	5.558	
8,300.0	7,053.0	8,383.8	7,053.0	41.7	43.1	90.00	-646.9	1,358.2	440.1	355.7	84.35	5.217	
8,400.0	7,053.0	8,483.8	7,053.0	44.4	45.7	90.00	-645.4	1,458.2	440.0	350.5	89.58	4.912	
8,500.0	7,053.0	8,583.8	7,053.0	47.0	48.3	90.00	-643.9	1,558.2	440.0	345.2	94.85	4.639	
8,600.0	7,053.0	8,683.8	7,053.0	49.6	50.9	90.00	-642.4	1,658.2	440.0	339.9	100.16	4.393	
8,700.0	7,053.0	8,783.8	7,053.0	52.3	53.6	90.00	-640.8	1,758.2	440.0	334.5	105.50	4.171	

CC - Min centre to center distance or convergent point, SF - min separation factor, ES - min ellipse separation

Company:	Synergy Resources	Local Co-ordinate Reference:	Well SRC Wiedeman A-5-4NHZ
Project:	Sec.5-T5N-R66W	TVD Reference:	WELL @ 4796.0ft (RKB - 13')
Reference Site:	SRC Wiedeman Pad Sec.5-T5N-R66W	MD Reference:	WELL @ 4796.0ft (RKB - 13')
Site Error:	0.0ft	North Reference:	True
Reference Well:	SRC Wiedeman A-5-4NHZ	Survey Calculation Method:	Minimum Curvature
Well Error:	0.0ft	Output errors are at	2.00 sigma
Reference Wellbore	Wellbore #1	Database:	Landmark
Reference Design:	Plan #1 (6-24-14)	Offset TVD Reference:	Offset Datum

Offset Design SRC Wiedeman Pad Sec.5-T5N-R66W - SRC Wiedeman 22-5-4NHZ - Wellbore #1 - Plan #1 (6-24-14)													Offset Site Error:	0.0 ft
Survey Program: 0-MWD													Offset Well Error:	0.0 ft
Reference		Offset		Semi Major Axis			Distance							Warning
Measured Depth	Vertical Depth	Measured Depth	Vertical Depth	Reference	Offset	Highside Toolface	Offset Wellbore Centre		Between Centres	Between Ellipses	Minimum Separation	Separation Factor		
(ft)	(ft)	(ft)	(ft)	(ft)	(ft)	(°)	+N/-S (ft)	+E/-W (ft)	(ft)	(ft)	(ft)			
8,800.0	7,053.0	8,883.8	7,053.0	55.0	56.2	90.00	-639.3	1,858.2	440.0	329.1	110.87	3.969		
8,900.0	7,053.0	8,983.8	7,053.0	57.7	58.9	90.00	-637.8	1,958.2	440.0	323.8	116.26	3.785		
9,000.0	7,053.0	9,083.8	7,053.0	60.4	61.6	90.00	-636.3	2,058.2	440.0	318.3	121.67	3.616		
9,100.0	7,053.0	9,183.8	7,053.0	63.1	64.3	90.00	-634.8	2,158.2	440.0	312.9	127.10	3.462		
9,200.0	7,053.0	9,283.8	7,053.0	65.8	67.0	90.00	-633.3	2,258.1	440.0	307.5	132.54	3.320		
9,300.0	7,053.0	9,383.8	7,053.0	68.6	69.7	90.00	-631.7	2,358.1	440.0	302.0	138.00	3.188		
9,400.0	7,053.0	9,483.8	7,053.0	71.3	72.5	90.00	-630.2	2,458.1	440.0	296.5	143.47	3.067		
9,500.0	7,053.0	9,583.8	7,053.0	74.0	75.2	90.00	-628.7	2,558.1	440.0	291.0	148.94	2.954		
9,600.0	7,053.0	9,683.8	7,053.0	76.8	77.9	90.00	-627.2	2,658.1	440.0	285.5	154.43	2.849		
9,700.0	7,053.0	9,783.8	7,053.0	79.5	80.7	90.00	-625.7	2,758.1	440.0	280.0	159.93	2.751		
9,800.0	7,053.0	9,883.8	7,053.0	82.3	83.4	90.00	-624.1	2,858.1	440.0	274.5	165.43	2.659		
9,900.0	7,053.0	9,983.8	7,053.0	85.0	86.2	90.00	-622.6	2,958.1	439.9	269.0	170.94	2.574		
10,000.0	7,053.0	10,083.8	7,053.0	87.8	88.9	90.00	-621.1	3,058.1	439.9	263.5	176.46	2.493		
10,100.0	7,053.0	10,183.8	7,053.0	90.6	91.7	90.00	-619.6	3,158.0	439.9	257.9	181.98	2.417		
10,200.0	7,053.0	10,283.8	7,053.0	93.3	94.4	90.00	-618.1	3,258.0	439.9	252.4	187.51	2.346		
10,300.0	7,053.0	10,383.8	7,053.0	96.1	97.2	90.00	-616.6	3,358.0	439.9	246.9	193.05	2.279		
10,400.0	7,053.0	10,483.8	7,053.0	98.9	99.9	90.00	-615.0	3,458.0	439.9	241.3	198.58	2.215		
10,500.0	7,053.0	10,583.8	7,053.0	101.6	102.7	90.00	-613.5	3,558.0	439.9	235.8	204.12	2.155		
10,600.0	7,053.0	10,683.8	7,053.0	104.4	105.5	90.00	-612.0	3,658.0	439.9	230.2	209.67	2.098		
10,700.0	7,053.0	10,783.8	7,053.0	107.2	108.2	90.00	-610.5	3,758.0	439.9	224.7	215.22	2.044		
10,800.0	7,053.0	10,883.8	7,053.0	110.0	111.0	90.00	-609.0	3,858.0	439.9	219.1	220.77	1.993		
10,900.0	7,053.0	10,983.8	7,053.0	112.7	113.8	90.00	-607.4	3,957.9	439.9	213.6	226.32	1.944		
11,000.0	7,053.0	11,083.8	7,053.0	115.5	116.6	90.00	-605.9	4,057.9	439.9	208.0	231.88	1.897		
11,100.0	7,053.0	11,183.8	7,053.0	118.3	119.3	90.00	-604.4	4,157.9	439.9	202.4	237.44	1.853		
11,200.0	7,053.0	11,283.8	7,053.0	121.1	122.1	90.00	-602.9	4,257.9	439.9	196.9	243.00	1.810		
11,300.0	7,053.0	11,383.8	7,053.0	123.9	124.9	90.00	-601.4	4,357.9	439.9	191.3	248.57	1.770		
11,400.0	7,053.0	11,483.8	7,053.0	126.6	127.7	90.00	-599.9	4,457.9	439.8	185.7	254.13	1.731		
11,500.0	7,053.0	11,583.8	7,053.0	129.4	130.5	90.00	-598.3	4,557.9	439.8	180.1	259.70	1.694		
11,527.8	7,053.0	11,611.6	7,053.0	130.2	131.2	90.00	-597.9	4,585.7	439.8	178.6	261.25	1.684		
11,582.0	7,053.0	11,621.6	7,053.0	131.7	131.5	90.00	-597.8	4,595.7	442.0	179.0	263.04	1.681 SF		

Company:	Synergy Resources	Local Co-ordinate Reference:	Well SRC Wiedeman A-5-4NHZ
Project:	Sec.5-T5N-R66W	TVD Reference:	WELL @ 4796.0ft (RKB - 13')
Reference Site:	SRC Wiedeman Pad Sec.5-T5N-R66W	MD Reference:	WELL @ 4796.0ft (RKB - 13')
Site Error:	0.0ft	North Reference:	True
Reference Well:	SRC Wiedeman A-5-4NHZ	Survey Calculation Method:	Minimum Curvature
Well Error:	0.0ft	Output errors are at	2.00 sigma
Reference Wellbore	Wellbore #1	Database:	Landmark
Reference Design:	Plan #1 (6-24-14)	Offset TVD Reference:	Offset Datum

Offset Design SRC Wiedeman Pad Sec.5-T5N-R66W - SRC Wiedeman A-5-3CHZ - Wellbore #1 - Plan #1 (6-24-14)													Offset Site Error:	0.0 ft
Survey Program: 0-MWD													Offset Well Error:	0.0 ft
Reference		Offset		Semi Major Axis			Distance							Warning
Measured Depth (ft)	Vertical Depth (ft)	Measured Depth (ft)	Vertical Depth (ft)	Reference (ft)	Offset (ft)	Highside Toolface (°)	Offset Wellbore Centre +N/-S (ft)	+E/-W (ft)	Between Centres (ft)	Between Ellipses (ft)	Minimum Separation (ft)	Separation Factor		
0.0	0.0	0.0	0.0	0.0	0.0	6.38	14.9	1.7	15.0	15.0	0.00	N/A		
100.0	100.0	100.0	100.0	0.1	0.1	6.38	14.9	1.7	15.0	14.8	0.22	66.869		
200.0	200.0	200.0	200.0	0.3	0.3	6.38	14.9	1.7	15.0	14.4	0.67	22.290		
300.0	300.0	300.0	300.0	0.6	0.6	6.38	14.9	1.7	15.0	13.9	1.12	13.374		
400.0	400.0	400.0	400.0	0.8	0.8	6.38	14.9	1.7	15.0	13.5	1.57	9.553		
500.0	500.0	500.0	500.0	1.0	1.0	6.38	14.9	1.7	15.0	13.0	2.02	7.430		
600.0	600.0	600.0	600.0	1.2	1.2	6.38	14.9	1.7	15.0	12.6	2.47	6.079		
700.0	700.0	700.0	700.0	1.5	1.5	6.38	14.9	1.7	15.0	12.1	2.92	5.144		
800.0	800.0	800.0	800.0	1.7	1.7	6.38	14.9	1.7	15.0	11.7	3.37	4.458		
900.0	900.0	900.0	900.0	1.9	1.9	6.38	14.9	1.7	15.0	11.2	3.82	3.933		
1,000.0	1,000.0	1,000.0	1,000.0	2.1	2.1	6.38	14.9	1.7	15.0	10.8	4.27	3.519		
1,100.0	1,100.0	1,100.0	1,100.0	2.4	2.4	6.38	14.9	1.7	15.0	10.3	4.72	3.184		
1,200.0	1,200.0	1,200.0	1,200.0	2.6	2.6	6.38	14.9	1.7	15.0	9.9	5.17	2.907		
1,300.0	1,300.0	1,300.0	1,300.0	2.8	2.8	6.38	14.9	1.7	15.0	9.4	5.62	2.675		
1,400.0	1,400.0	1,400.0	1,400.0	3.0	3.0	6.38	14.9	1.7	15.0	9.0	6.07	2.477 CC, ES		
1,500.0	1,500.0	1,500.0	1,500.0	3.2	3.3	150.35	14.9	1.7	16.5	10.0	6.49	2.545		
1,600.0	1,599.8	1,599.8	1,599.8	3.4	3.5	157.32	14.9	1.7	21.2	14.3	6.89	3.082		
1,681.5	1,681.0	1,681.0	1,681.0	3.6	3.7	162.75	14.9	1.7	27.7	20.5	7.21	3.837		
1,700.0	1,699.5	1,699.5	1,699.5	3.6	3.7	163.80	14.9	1.7	29.4	22.1	7.29	4.036		
1,800.0	1,799.0	1,799.0	1,799.0	3.8	3.9	167.83	14.9	1.7	38.9	31.2	7.70	5.057		
1,900.0	1,898.5	1,898.5	1,898.5	4.0	4.2	170.27	14.9	1.7	48.6	40.4	8.11	5.984		
2,000.0	1,998.0	1,998.0	1,998.0	4.3	4.4	171.90	14.9	1.7	58.3	49.7	8.54	6.824		
2,100.0	2,097.5	2,097.4	2,097.4	4.5	4.6	171.66	15.9	0.3	68.1	59.1	8.96	7.601		
2,200.0	2,197.0	2,196.6	2,196.4	4.7	4.8	168.96	18.8	-3.9	78.2	68.8	9.38	8.339		
2,300.0	2,296.6	2,295.3	2,294.8	5.0	5.0	164.71	23.7	-10.8	89.1	79.3	9.82	9.073		
2,400.0	2,396.1	2,394.2	2,393.0	5.2	5.3	160.01	29.9	-19.8	101.0	90.7	10.28	9.828		
2,500.0	2,495.6	2,493.1	2,491.4	5.5	5.5	156.25	36.3	-28.9	113.5	102.7	10.74	10.561		
2,600.0	2,595.1	2,592.1	2,589.7	5.7	5.7	153.24	42.7	-38.0	126.3	115.1	11.22	11.259		
2,700.0	2,694.6	2,691.1	2,688.1	6.0	6.0	150.78	49.0	-47.0	139.5	127.8	11.70	11.916		
2,800.0	2,794.2	2,790.1	2,786.4	6.3	6.2	148.76	55.4	-56.1	152.8	140.6	12.19	12.533		
2,900.0	2,893.7	2,889.0	2,884.8	6.5	6.5	147.06	61.8	-65.2	166.3	153.6	12.69	13.110		
3,000.0	2,993.2	2,988.0	2,983.1	6.8	6.8	145.61	68.1	-74.3	179.9	166.8	13.18	13.648		
3,100.0	3,092.7	3,087.0	3,081.5	7.1	7.0	144.37	74.5	-83.4	193.7	180.0	13.69	14.151		
3,200.0	3,192.2	3,185.9	3,179.8	7.4	7.3	143.30	80.9	-92.5	207.5	193.3	14.19	14.620		
3,300.0	3,291.7	3,284.9	3,278.2	7.6	7.6	142.35	87.2	-101.6	221.3	206.6	14.70	15.058		
3,400.0	3,391.3	3,383.9	3,376.5	7.9	7.8	141.52	93.6	-110.7	235.2	220.0	15.21	15.468		
3,500.0	3,490.8	3,482.9	3,474.9	8.2	8.1	140.78	100.0	-119.8	249.2	233.5	15.72	15.851		
3,600.0	3,590.3	3,581.8	3,573.2	8.5	8.4	140.12	106.3	-128.9	263.2	247.0	16.24	16.211		
3,700.0	3,689.8	3,680.8	3,671.6	8.8	8.7	139.53	112.7	-138.0	277.2	260.5	16.75	16.548		
3,800.0	3,789.3	3,785.6	3,775.9	9.1	8.9	139.23	118.5	-146.2	290.4	273.1	17.22	16.861		
3,900.0	3,888.8	3,891.5	3,881.5	9.3	9.1	139.55	122.1	-151.4	301.3	283.7	17.67	17.056		
4,000.0	3,988.4	3,997.6	3,987.6	9.6	9.3	140.44	123.5	-153.4	310.2	292.1	18.10	17.142		
4,100.0	4,087.9	4,097.9	4,087.9	9.9	9.5	141.57	123.5	-153.4	317.8	299.3	18.52	17.161		
4,200.0	4,187.4	4,197.4	4,187.4	10.2	9.7	142.64	123.5	-153.4	325.6	306.6	18.97	17.165		
4,300.0	4,286.9	4,296.9	4,286.9	10.5	9.9	143.66	123.5	-153.4	333.5	314.0	19.41	17.176		
4,400.0	4,386.4	4,396.4	4,386.4	10.8	10.1	144.64	123.5	-153.4	341.4	321.6	19.86	17.191		
4,432.7	4,419.0	4,428.9	4,419.0	10.9	10.2	144.94	123.5	-153.4	344.0	324.0	20.01	17.197		
4,500.0	4,486.0	4,496.0	4,486.0	11.0	10.3	145.55	123.5	-153.4	348.8	328.5	20.31	17.175		
4,600.0	4,585.9	4,595.8	4,585.9	11.2	10.5	146.12	123.5	-153.4	353.6	332.8	20.73	17.057		
4,700.0	4,685.8	4,695.8	4,685.8	11.4	10.7	146.35	123.5	-153.4	355.4	334.3	21.13	16.821		
4,714.2	4,700.0	4,710.0	4,700.0	11.4	10.8	5.66	123.5	-153.4	355.5	334.1	21.38	16.628		
4,800.0	4,785.8	4,795.8	4,785.8	11.6	11.0	5.66	123.5	-153.4	355.5	333.7	21.72	16.363		

CC - Min centre to center distance or convergent point, SF - min separation factor, ES - min ellipse separation

Company:	Synergy Resources	Local Co-ordinate Reference:	Well SRC Wiedeman A-5-4NHZ
Project:	Sec.5-T5N-R66W	TVD Reference:	WELL @ 4796.0ft (RKB - 13')
Reference Site:	SRC Wiedeman Pad Sec.5-T5N-R66W	MD Reference:	WELL @ 4796.0ft (RKB - 13')
Site Error:	0.0ft	North Reference:	True
Reference Well:	SRC Wiedeman A-5-4NHZ	Survey Calculation Method:	Minimum Curvature
Well Error:	0.0ft	Output errors are at	2.00 sigma
Reference Wellbore	Wellbore #1	Database:	Landmark
Reference Design:	Plan #1 (6-24-14)	Offset TVD Reference:	Offset Datum

Offset Design SRC Wiedeman Pad Sec.5-T5N-R66W - SRC Wiedeman A-5-3CHZ - Wellbore #1 - Plan #1 (6-24-14)													Offset Site Error:	0.0 ft
Survey Program: 0-MWD													Offset Well Error:	0.0 ft
Reference		Offset		Semi Major Axis			Distance							Warning
Measured Depth (ft)	Vertical Depth (ft)	Measured Depth (ft)	Vertical Depth (ft)	Reference (ft)	Offset (ft)	Highside Toolface (°)	Offset Wellbore Centre +N/-S (ft)	+E/-W (ft)	Between Centres (ft)	Between Ellipses (ft)	Minimum Separation (ft)	Separation Factor		
4,900.0	4,885.8	4,895.8	4,885.8	11.8	11.2	5.66	123.5	-153.4	355.5	333.3	22.12	16.069		
5,000.0	4,985.8	4,995.8	4,985.8	11.9	11.4	5.66	123.5	-153.4	355.5	332.9	22.52	15.784		
5,100.0	5,085.8	5,095.8	5,085.8	12.1	11.6	5.66	123.5	-153.4	355.5	332.5	22.92	15.508		
5,200.0	5,185.8	5,195.8	5,185.8	12.3	11.8	5.66	123.5	-153.4	355.5	332.1	23.32	15.240		
5,300.0	5,285.8	5,295.8	5,285.8	12.5	12.0	5.66	123.5	-153.4	355.5	331.7	23.73	14.980		
5,400.0	5,385.8	5,395.8	5,385.8	12.7	12.2	5.66	123.5	-153.4	355.5	331.3	24.13	14.728		
5,500.0	5,485.8	5,495.8	5,485.8	12.8	12.4	5.66	123.5	-153.4	355.5	330.9	24.54	14.484		
5,600.0	5,585.8	5,595.8	5,585.8	13.0	12.7	5.66	123.5	-153.4	355.5	330.5	24.95	14.247		
5,700.0	5,685.8	5,695.8	5,685.8	13.2	12.9	5.66	123.5	-153.4	355.5	330.1	25.36	14.016		
5,800.0	5,785.8	5,795.8	5,785.8	13.4	13.1	5.66	123.5	-153.4	355.5	329.7	25.77	13.793		
5,900.0	5,885.8	5,895.8	5,885.8	13.6	13.3	5.66	123.5	-153.4	355.5	329.3	26.18	13.575		
6,000.0	5,985.8	5,995.8	5,985.8	13.8	13.5	5.66	123.5	-153.4	355.5	328.9	26.60	13.364		
6,100.0	6,085.8	6,095.8	6,085.8	14.0	13.7	5.66	123.5	-153.4	355.5	328.5	27.01	13.159		
6,200.0	6,185.8	6,195.8	6,185.8	14.2	14.0	5.66	123.5	-153.4	355.5	328.0	27.43	12.959		
6,300.0	6,285.8	6,295.8	6,285.8	14.4	14.2	5.66	123.5	-153.4	355.5	327.6	27.85	12.765		
6,351.0	6,336.8	6,346.8	6,336.8	14.4	14.3	5.66	123.5	-153.4	355.5	327.4	28.06	12.669		
6,400.0	6,385.8	6,395.8	6,385.8	14.5	14.4	-83.76	123.5	-153.4	355.3	327.1	28.18	12.608		
6,450.0	6,435.5	6,445.5	6,435.5	14.6	14.5	-84.62	123.5	-153.4	354.8	326.4	28.37	12.503		
6,500.0	6,484.8	6,494.7	6,484.8	14.7	14.6	-86.05	123.5	-153.4	354.0	325.5	28.56	12.395		
6,550.0	6,533.3	6,542.9	6,532.9	14.7	14.7	-87.89	123.5	-153.0	353.4	324.7	28.74	12.296		
6,600.0	6,580.8	6,591.1	6,581.0	14.8	14.8	-89.80	123.6	-149.6	353.1	324.2	28.90	12.219		
6,611.0	6,591.1	6,601.8	6,591.6	14.8	14.8	-90.22	123.6	-148.4	353.1	324.2	28.93	12.205		
6,650.0	6,627.2	6,640.1	6,629.5	14.8	14.9	-91.71	123.6	-142.8	353.2	324.2	29.04	12.162		
6,700.0	6,672.2	6,690.0	6,678.3	14.8	14.9	-93.64	123.7	-132.6	353.7	324.6	29.18	12.123		
6,750.0	6,715.5	6,740.7	6,727.1	14.9	15.0	-95.55	123.8	-118.7	354.6	325.3	29.31	12.098		
6,800.0	6,757.0	6,792.4	6,775.7	14.9	15.1	-97.45	123.9	-101.0	355.9	326.5	29.45	12.085		
6,850.0	6,796.4	6,845.1	6,823.7	15.0	15.1	-99.32	124.1	-79.5	357.5	327.9	29.60	12.077		
6,900.0	6,833.6	6,898.7	6,870.9	15.0	15.2	-101.15	124.3	-54.0	359.5	329.7	29.79	12.069		
6,950.0	6,868.4	6,953.5	6,916.9	15.1	15.3	-102.92	124.5	-24.4	361.7	331.7	30.02	12.051		
7,000.0	6,900.6	7,009.3	6,961.4	15.3	15.5	-104.63	124.7	9.3	364.2	333.9	30.32	12.013		
7,050.0	6,930.0	7,066.2	7,003.9	15.7	15.7	-106.27	125.0	47.2	366.8	336.1	30.71	11.945		
7,100.0	6,956.6	7,124.2	7,044.0	16.1	16.0	-107.82	125.3	89.1	369.6	338.4	31.21	11.842		
7,150.0	6,980.1	7,183.3	7,081.2	16.7	16.4	-109.27	125.7	135.0	372.3	340.5	31.85	11.691		
7,200.0	7,000.5	7,243.5	7,115.1	17.3	16.9	-110.62	126.0	184.7	375.1	342.5	32.65	11.489		
7,250.0	7,017.6	7,304.7	7,145.1	18.0	17.6	-111.86	126.4	238.0	377.8	344.1	33.63	11.234		
7,300.0	7,031.5	7,366.9	7,170.9	18.8	18.3	-112.97	126.8	294.6	380.3	345.5	34.80	10.927		
7,350.0	7,041.9	7,430.0	7,191.9	19.6	19.2	-113.96	127.3	354.1	382.5	346.3	36.16	10.579		
7,400.0	7,049.0	7,494.0	7,207.8	20.6	20.3	-114.80	127.7	416.0	384.4	346.7	37.69	10.199		
7,450.0	7,052.5	7,558.6	7,218.2	21.5	21.4	-115.50	128.2	479.8	386.0	346.6	39.40	9.796		
7,476.0	7,053.0	7,592.4	7,221.3	22.0	22.0	-115.81	128.5	513.5	386.7	346.3	40.36	9.581		
7,500.0	7,053.0	7,623.9	7,222.8	22.5	22.6	-116.02	128.7	544.8	387.0	345.7	41.27	9.377		
7,600.0	7,053.0	7,728.1	7,223.0	24.6	24.7	-116.10	129.5	649.1	386.4	341.3	45.04	8.578		
7,700.0	7,053.0	7,828.1	7,223.0	26.9	26.9	-116.15	130.2	749.1	385.7	336.7	48.98	7.875		
7,800.0	7,053.0	7,928.1	7,223.0	29.2	29.2	-116.21	130.9	849.1	385.0	331.9	53.10	7.250		
7,900.0	7,053.0	8,028.1	7,223.0	31.6	31.5	-116.26	131.7	949.1	384.3	326.9	57.37	6.699		
8,000.0	7,053.0	8,128.1	7,223.0	34.1	34.0	-116.31	132.4	1,049.1	383.6	321.8	61.75	6.212		
8,100.0	7,053.0	8,228.1	7,223.0	36.6	36.4	-116.36	133.1	1,149.1	382.9	316.7	66.23	5.782		
8,200.0	7,053.0	8,328.1	7,223.0	39.1	39.0	-116.41	133.9	1,249.1	382.2	311.4	70.78	5.400		
8,300.0	7,053.0	8,428.1	7,223.0	41.7	41.5	-116.46	134.6	1,349.0	381.5	306.1	75.38	5.061		
8,400.0	7,053.0	8,528.1	7,223.0	44.4	44.1	-116.51	135.4	1,449.0	380.8	300.8	80.04	4.758		
8,500.0	7,053.0	8,628.1	7,223.0	47.0	46.7	-116.57	136.1	1,549.0	380.1	295.4	84.73	4.486		
8,600.0	7,053.0	8,728.1	7,223.0	49.6	49.4	-116.62	136.8	1,649.0	379.4	290.0	89.45	4.242		

CC - Min centre to center distance or convergent point, SF - min separation factor, ES - min ellipse separation

Company:	Synergy Resources	Local Co-ordinate Reference:	Well SRC Wiedeman A-5-4NHZ
Project:	Sec.5-T5N-R66W	TVD Reference:	WELL @ 4796.0ft (RKB - 13')
Reference Site:	SRC Wiedeman Pad Sec.5-T5N-R66W	MD Reference:	WELL @ 4796.0ft (RKB - 13')
Site Error:	0.0ft	North Reference:	True
Reference Well:	SRC Wiedeman A-5-4NHZ	Survey Calculation Method:	Minimum Curvature
Well Error:	0.0ft	Output errors are at	2.00 sigma
Reference Wellbore	Wellbore #1	Database:	Landmark
Reference Design:	Plan #1 (6-24-14)	Offset TVD Reference:	Offset Datum

Offset Design												Offset Site Error:	0.0 ft
Survey Program: 0-MWD												Offset Well Error:	0.0 ft
Reference		Offset		Semi Major Axis			Distance						Warning
Measured Depth (ft)	Vertical Depth (ft)	Measured Depth (ft)	Vertical Depth (ft)	Reference (ft)	Offset (ft)	Highside Toolface (°)	Offset Wellbore Centre +N/-S (ft)	+E/-W (ft)	Between Centres (ft)	Between Ellipses (ft)	Minimum Separation (ft)	Separation Factor	
8,700.0	7,053.0	8,828.1	7,223.0	52.3	52.0	-116.67	137.6	1,749.0	378.7	284.5	94.20	4.020	
8,800.0	7,053.0	8,928.1	7,223.0	55.0	54.7	-116.72	138.3	1,849.0	378.1	279.1	98.98	3.820	
8,900.0	7,053.0	9,028.1	7,223.0	57.7	57.4	-116.78	139.0	1,949.0	377.4	273.6	103.77	3.637	
9,000.0	7,053.0	9,128.1	7,223.0	60.4	60.1	-116.83	139.8	2,049.0	376.7	268.1	108.58	3.469	
9,100.0	7,053.0	9,228.1	7,223.0	63.1	62.8	-116.88	140.5	2,149.0	376.0	262.6	113.40	3.316	
9,200.0	7,053.0	9,328.1	7,223.0	65.8	65.5	-116.94	141.3	2,249.0	375.3	257.1	118.23	3.174	
9,300.0	7,053.0	9,428.1	7,223.0	68.6	68.2	-116.99	142.0	2,349.0	374.6	251.5	123.07	3.044	
9,400.0	7,053.0	9,528.1	7,223.0	71.3	70.9	-117.04	142.7	2,449.0	373.9	246.0	127.91	2.923	
9,500.0	7,053.0	9,628.1	7,223.0	74.0	73.7	-117.10	143.5	2,549.0	373.2	240.5	132.76	2.811	
9,600.0	7,053.0	9,728.1	7,223.0	76.8	76.4	-117.15	144.2	2,649.0	372.5	234.9	137.62	2.707	
9,700.0	7,053.0	9,828.1	7,223.0	79.5	79.2	-117.21	144.9	2,749.0	371.8	229.4	142.48	2.610	
9,800.0	7,053.0	9,928.0	7,223.0	82.3	81.9	-117.26	145.7	2,849.0	371.2	223.8	147.34	2.519	
9,900.0	7,053.0	10,028.0	7,223.0	85.0	84.7	-117.32	146.4	2,949.0	370.5	218.3	152.20	2.434	
10,000.0	7,053.0	10,128.0	7,223.0	87.8	87.4	-117.37	147.2	3,048.9	369.8	212.7	157.07	2.354	
10,100.0	7,053.0	10,228.0	7,223.0	90.6	90.2	-117.43	147.9	3,148.9	369.1	207.2	161.94	2.279	
10,200.0	7,053.0	10,328.0	7,223.0	93.3	92.9	-117.48	148.6	3,248.9	368.4	201.6	166.80	2.209	
10,300.0	7,053.0	10,428.0	7,223.0	96.1	95.7	-117.54	149.4	3,348.9	367.7	196.1	171.67	2.142	
10,400.0	7,053.0	10,528.0	7,223.0	98.9	98.5	-117.59	150.1	3,448.9	367.0	190.5	176.53	2.079	
10,500.0	7,053.0	10,628.0	7,223.0	101.6	101.2	-117.65	150.8	3,548.9	366.3	185.0	181.40	2.020	
10,600.0	7,053.0	10,728.0	7,223.0	104.4	104.0	-117.71	151.6	3,648.9	365.7	179.4	186.26	1.963	
10,700.0	7,053.0	10,828.0	7,223.0	107.2	106.8	-117.76	152.3	3,748.9	365.0	173.9	191.12	1.910	
10,800.0	7,053.0	10,928.0	7,223.0	110.0	109.6	-117.82	153.1	3,848.9	364.3	168.3	195.97	1.859	
10,900.0	7,053.0	11,028.0	7,223.0	112.7	112.3	-117.88	153.8	3,948.9	363.6	162.8	200.83	1.811	
11,000.0	7,053.0	11,128.0	7,223.0	115.5	115.1	-117.93	154.5	4,048.9	362.9	157.2	205.68	1.764	
11,100.0	7,053.0	11,228.0	7,223.0	118.3	117.9	-117.99	155.3	4,148.9	362.2	151.7	210.53	1.721	
11,200.0	7,053.0	11,328.0	7,223.0	121.1	120.7	-118.05	156.0	4,248.9	361.6	146.2	215.38	1.679	
11,300.0	7,053.0	11,428.0	7,223.0	123.9	123.4	-118.10	156.7	4,348.9	360.9	140.7	220.22	1.639	
11,400.0	7,053.0	11,528.0	7,223.0	126.6	126.2	-118.16	157.5	4,448.9	360.2	135.1	225.06	1.600	
11,500.0	7,053.0	11,628.0	7,223.0	129.4	129.0	-118.22	158.2	4,548.9	359.5	129.6	229.90	1.564	
11,582.0	7,053.0	11,710.0	7,223.0	131.7	131.3	-118.27	158.8	4,630.9	359.0	125.1	233.86	1.535 SF	

Company:	Synergy Resources	Local Co-ordinate Reference:	Well SRC Wiedeman A-5-4NHZ
Project:	Sec.5-T5N-R66W	TVD Reference:	WELL @ 4796.0ft (RKB - 13')
Reference Site:	SRC Wiedeman Pad Sec.5-T5N-R66W	MD Reference:	WELL @ 4796.0ft (RKB - 13')
Site Error:	0.0ft	North Reference:	True
Reference Well:	SRC Wiedeman A-5-4NHZ	Survey Calculation Method:	Minimum Curvature
Well Error:	0.0ft	Output errors are at	2.00 sigma
Reference Wellbore	Wellbore #1	Database:	Landmark
Reference Design:	Plan #1 (6-24-14)	Offset TVD Reference:	Offset Datum

Offset Design SRC Wiedeman Pad Sec.5-T5N-R66W - SRC Wiedeman A-5-4CHZ - Wellbore #1 - Plan #1 (6-24-14)													Offset Site Error:	0.0 ft
Survey Program: 0-MWD													Offset Well Error:	0.0 ft
Reference		Offset		Semi Major Axis			Distance							Warning
Measured Depth (ft)	Vertical Depth (ft)	Measured Depth (ft)	Vertical Depth (ft)	Reference (ft)	Offset (ft)	Highside Toolface (°)	Offset Wellbore Centre +N/-S (ft)	+E/-W (ft)	Between Centres (ft)	Between Ellipses (ft)	Minimum Separation (ft)	Separation Factor		
0.0	0.0	0.0	0.0	0.0	0.0	-174.68	-14.9	-1.4	15.0	15.0	0.00	N/A		
100.0	100.0	100.0	100.0	0.1	0.1	-174.68	-14.9	-1.4	15.0	14.8	0.22	66.743		
200.0	200.0	200.0	200.0	0.3	0.3	-174.68	-14.9	-1.4	15.0	14.3	0.67	22.248		
300.0	300.0	300.0	300.0	0.6	0.6	-174.68	-14.9	-1.4	15.0	13.9	1.12	13.349		
400.0	400.0	400.0	400.0	0.8	0.8	-174.68	-14.9	-1.4	15.0	13.4	1.57	9.535		
500.0	500.0	500.0	500.0	1.0	1.0	-174.68	-14.9	-1.4	15.0	13.0	2.02	7.416		
600.0	600.0	600.0	600.0	1.2	1.2	-174.68	-14.9	-1.4	15.0	12.5	2.47	6.068		
700.0	700.0	700.0	700.0	1.5	1.5	-174.68	-14.9	-1.4	15.0	12.1	2.92	5.134		
800.0	800.0	800.0	800.0	1.7	1.7	-174.68	-14.9	-1.4	15.0	11.6	3.37	4.450		
900.0	900.0	900.0	900.0	1.9	1.9	-174.68	-14.9	-1.4	15.0	11.2	3.82	3.926		
1,000.0	1,000.0	1,000.0	1,000.0	2.1	2.1	-174.68	-14.9	-1.4	15.0	10.7	4.27	3.513		
1,100.0	1,100.0	1,100.0	1,100.0	2.4	2.4	-174.68	-14.9	-1.4	15.0	10.3	4.72	3.178		
1,200.0	1,200.0	1,200.0	1,200.0	2.6	2.6	-174.68	-14.9	-1.4	15.0	9.8	5.17	2.902 CC, ES		
1,300.0	1,300.0	1,299.5	1,299.5	2.8	2.8	-172.61	-16.5	-2.1	16.6	11.1	5.59	2.976		
1,400.0	1,400.0	1,398.7	1,398.5	3.0	3.0	-168.33	-21.1	-4.4	21.6	15.7	5.99	3.612		
1,500.0	1,500.0	1,497.7	1,497.2	3.2	3.1	-25.05	-28.9	-8.1	28.5	22.1	6.38	4.472		
1,600.0	1,599.8	1,597.6	1,596.6	3.4	3.4	-25.43	-37.9	-12.4	33.6	26.8	6.74	4.984		
1,681.5	1,681.0	1,679.0	1,677.6	3.6	3.5	-27.49	-45.2	-15.9	35.4	28.4	7.04	5.028		
1,700.0	1,699.5	1,697.5	1,696.0	3.6	3.6	-28.13	-46.9	-16.7	35.6	28.5	7.11	5.004		
1,800.0	1,799.0	1,797.5	1,795.5	3.8	3.8	-31.46	-55.9	-21.0	36.7	29.2	7.51	4.880		
1,900.0	1,898.5	1,897.5	1,895.0	4.0	4.0	-34.60	-64.9	-25.3	37.9	29.9	7.93	4.775		
2,000.0	1,998.0	1,997.5	1,994.4	4.3	4.3	-37.54	-73.9	-29.6	39.2	30.8	8.36	4.684		
2,100.0	2,097.5	2,097.4	2,093.9	4.5	4.5	-40.28	-82.9	-33.9	40.6	31.8	8.81	4.607		
2,200.0	2,197.0	2,197.4	2,193.4	4.7	4.8	-42.83	-91.9	-38.3	42.1	32.8	9.27	4.539		
2,300.0	2,296.6	2,297.4	2,292.8	5.0	5.1	-45.20	-100.9	-42.6	43.7	33.9	9.74	4.480		
2,400.0	2,396.1	2,397.4	2,392.3	5.2	5.3	-47.40	-109.9	-46.9	45.3	35.1	10.23	4.428		
2,500.0	2,495.6	2,497.3	2,491.8	5.5	5.6	-49.45	-118.9	-51.2	47.0	36.3	10.72	4.382		
2,600.0	2,595.1	2,597.3	2,591.3	5.7	5.9	-51.35	-127.9	-55.5	48.8	37.5	11.23	4.342		
2,700.0	2,694.6	2,697.3	2,690.7	6.0	6.1	-53.11	-136.9	-59.8	50.6	38.8	11.74	4.306		
2,800.0	2,794.2	2,797.2	2,790.2	6.3	6.4	-54.76	-145.9	-64.2	52.4	40.2	12.26	4.274		
2,900.0	2,893.7	2,897.2	2,889.7	6.5	6.7	-56.29	-154.9	-68.5	54.3	41.5	12.79	4.245		
3,000.0	2,993.2	2,997.2	2,989.2	6.8	7.0	-57.71	-163.9	-72.8	56.2	42.9	13.33	4.220		
3,100.0	3,092.7	3,097.2	3,088.6	7.1	7.3	-59.04	-172.9	-77.1	58.2	44.3	13.87	4.197		
3,200.0	3,192.2	3,197.1	3,188.1	7.4	7.5	-60.29	-181.9	-81.4	60.2	45.8	14.41	4.176		
3,300.0	3,291.7	3,297.1	3,287.6	7.6	7.8	-61.45	-190.9	-85.7	62.2	47.2	14.96	4.158		
3,400.0	3,391.3	3,397.1	3,387.0	7.9	8.1	-62.54	-199.9	-90.0	64.2	48.7	15.52	4.141		
3,500.0	3,490.8	3,497.0	3,486.5	8.2	8.4	-63.56	-208.9	-94.4	66.3	50.2	16.07	4.126		
3,600.0	3,590.3	3,597.0	3,586.0	8.5	8.7	-64.52	-218.0	-98.7	68.4	51.8	16.63	4.112		
3,700.0	3,689.8	3,697.0	3,685.5	8.8	9.0	-65.43	-227.0	-103.0	70.5	53.3	17.20	4.100		
3,800.0	3,789.3	3,797.0	3,784.9	9.1	9.3	-66.28	-236.0	-107.3	72.6	54.9	17.76	4.088		
3,900.0	3,888.8	3,896.9	3,884.4	9.3	9.5	-67.08	-245.0	-111.6	74.7	56.4	18.33	4.078		
4,000.0	3,988.4	3,996.9	3,983.9	9.6	9.8	-67.84	-254.0	-115.9	76.9	58.0	18.90	4.069		
4,100.0	4,087.9	4,096.9	4,083.3	9.9	10.1	-68.55	-263.0	-120.2	79.1	59.6	19.47	4.060		
4,200.0	4,187.4	4,196.8	4,182.8	10.2	10.4	-69.23	-272.0	-124.6	81.2	61.2	20.04	4.053		
4,300.0	4,286.9	4,296.8	4,282.3	10.5	10.7	-69.88	-281.0	-128.9	83.4	62.8	20.62	4.046		
4,400.0	4,386.4	4,396.8	4,381.8	10.8	11.0	-70.49	-290.0	-133.2	85.6	64.4	21.19	4.039		
4,432.7	4,419.0	4,429.5	4,414.3	10.9	11.1	-70.68	-292.9	-134.6	86.3	64.9	21.38	4.037		
4,500.0	4,486.0	4,496.8	4,481.2	11.0	11.3	-70.61	-299.0	-137.5	88.1	66.3	21.73	4.053		
4,600.0	4,585.9	4,596.6	4,580.6	11.2	11.6	-68.82	-308.0	-141.8	91.7	69.5	22.13	4.142		
4,700.0	4,685.8	4,696.3	4,679.8	11.4	11.9	-65.29	-317.0	-146.1	96.8	74.3	22.42	4.315		
4,714.2	4,700.0	4,710.4	4,693.8	11.4	11.9	154.63	-318.2	-146.7	97.6	76.3	21.31	4.582		
4,800.0	4,785.8	4,795.8	4,778.8	11.6	12.2	158.32	-325.9	-150.4	103.3	81.4	21.88	4.719		

CC - Min centre to center distance or convergent point, SF - min separation factor, ES - min ellipse separation

Company:	Synergy Resources	Local Co-ordinate Reference:	Well SRC Wiedeman A-5-4NHZ
Project:	Sec.5-T5N-R66W	TVD Reference:	WELL @ 4796.0ft (RKB - 13')
Reference Site:	SRC Wiedeman Pad Sec.5-T5N-R66W	MD Reference:	WELL @ 4796.0ft (RKB - 13')
Site Error:	0.0ft	North Reference:	True
Reference Well:	SRC Wiedeman A-5-4NHZ	Survey Calculation Method:	Minimum Curvature
Well Error:	0.0ft	Output errors are at	2.00 sigma
Reference Wellbore	Wellbore #1	Database:	Landmark
Reference Design:	Plan #1 (6-24-14)	Offset TVD Reference:	Offset Datum

Offset Design												Offset Site Error:	0.0 ft
Survey Program: 0-MWD												Offset Well Error:	0.0 ft
Reference		Offset		Semi Major Axis			Distance						
Measured Depth (ft)	Vertical Depth (ft)	Measured Depth (ft)	Vertical Depth (ft)	Reference (ft)	Offset (ft)	Highside Toolface (°)	Offset Wellbore Centre +N/-S (ft)	+E/-W (ft)	Between Centres (ft)	Between Ellipses (ft)	Minimum Separation (ft)	Separation Factor	Warning
4,900.0	4,885.8	4,895.3	4,877.8	11.8	12.5	162.12	-334.9	-154.7	110.3	87.8	22.53	4.895	
5,000.0	4,985.8	4,994.8	4,976.8	11.9	12.7	165.46	-343.9	-159.0	117.8	94.6	23.17	5.083	
5,100.0	5,085.8	5,094.3	5,075.8	12.1	13.0	168.40	-352.8	-163.3	125.6	101.8	23.78	5.280	
5,200.0	5,185.8	5,193.8	5,174.8	12.3	13.3	170.98	-361.8	-167.6	133.7	109.3	24.38	5.483	
5,300.0	5,285.8	5,293.3	5,273.8	12.5	13.6	173.27	-370.8	-171.9	142.0	117.1	24.97	5.688	
5,400.0	5,385.8	5,392.8	5,372.8	12.7	13.9	175.30	-379.7	-176.2	150.6	125.0	25.54	5.895	
5,500.0	5,485.8	5,492.3	5,471.8	12.8	14.2	177.11	-388.7	-180.5	159.3	133.2	26.11	6.102	
5,600.0	5,585.8	5,591.8	5,570.8	13.0	14.5	178.73	-397.6	-184.8	168.2	141.5	26.66	6.308	
5,700.0	5,685.8	5,691.3	5,669.8	13.2	14.8	-179.81	-406.6	-189.1	177.1	149.9	27.20	6.511	
5,800.0	5,785.8	5,790.8	5,768.8	13.4	15.1	-178.49	-415.6	-193.4	186.2	158.5	27.74	6.712	
5,900.0	5,885.8	5,890.3	5,867.8	13.6	15.4	-177.30	-424.5	-197.7	195.4	167.1	28.28	6.909	
6,000.0	5,985.8	5,989.8	5,966.8	13.8	15.7	-176.21	-433.5	-201.9	204.6	175.8	28.81	7.103	
6,100.0	6,085.8	6,093.3	6,069.8	14.0	16.0	-175.23	-442.3	-206.2	213.5	184.1	29.32	7.281	
6,200.0	6,185.8	6,200.7	6,177.0	14.2	16.2	-174.61	-448.3	-209.0	219.2	189.5	29.75	7.370	
6,300.0	6,285.8	6,308.4	6,284.7	14.4	16.3	-174.38	-450.6	-210.2	221.5	191.4	30.14	7.350	
6,351.0	6,336.8	6,360.5	6,336.8	14.4	16.4	-174.38	-450.7	-210.2	221.5	191.2	30.32	7.305	
6,400.0	6,385.8	6,409.5	6,385.8	14.5	16.5	96.90	-450.7	-210.2	221.7	193.6	28.13	7.881	
6,450.0	6,435.5	6,459.2	6,435.5	14.6	16.6	98.16	-450.7	-210.2	222.4	194.2	28.23	7.877	
6,500.0	6,484.8	6,508.5	6,484.8	14.7	16.7	100.20	-450.7	-210.2	223.8	195.5	28.28	7.913	
6,550.0	6,533.3	6,559.1	6,535.3	14.7	16.7	102.92	-450.7	-209.6	226.2	197.9	28.29	7.995	
6,600.0	6,580.8	6,612.0	6,588.1	14.8	16.8	105.72	-450.6	-205.6	229.1	200.9	28.27	8.104	
6,650.0	6,627.2	6,665.8	6,641.3	14.8	16.9	108.39	-450.5	-197.4	232.6	204.3	28.24	8.236	
6,700.0	6,672.2	6,720.8	6,694.8	14.8	16.9	110.93	-450.3	-185.1	236.4	208.2	28.18	8.389	
6,750.0	6,715.5	6,776.8	6,748.2	14.9	17.0	113.32	-450.0	-168.3	240.6	212.5	28.11	8.558	
6,800.0	6,757.0	6,833.8	6,801.1	14.9	17.0	115.55	-449.7	-146.9	244.9	216.9	28.03	8.740	
6,850.0	6,796.4	6,892.0	6,853.1	15.0	17.0	117.61	-449.3	-120.9	249.4	221.5	27.94	8.927	
6,900.0	6,833.6	6,951.2	6,903.7	15.0	17.0	119.49	-448.9	-90.1	253.9	226.0	27.86	9.111	
6,950.0	6,868.4	7,011.5	6,952.4	15.1	17.0	121.19	-448.3	-54.7	258.3	230.4	27.83	9.280	
7,000.0	6,900.6	7,072.8	6,998.7	15.3	17.1	122.70	-447.7	-14.5	262.4	234.6	27.86	9.421	
7,050.0	6,930.0	7,135.0	7,042.0	15.7	17.1	124.02	-447.0	30.1	266.3	238.3	27.97	9.520	
7,100.0	6,956.6	7,198.1	7,081.8	16.1	17.1	125.16	-446.3	79.1	269.8	241.6	28.20	9.566	
7,150.0	6,980.1	7,262.0	7,117.6	16.7	17.2	126.10	-445.5	132.0	272.8	244.2	28.60	9.541	
7,200.0	7,000.5	7,326.6	7,148.8	17.3	17.4	126.85	-444.6	188.5	275.4	246.2	29.18	9.438	
7,250.0	7,017.6	7,391.6	7,174.9	18.0	18.1	127.41	-443.7	248.0	277.3	247.3	29.95	9.258	
7,300.0	7,031.5	7,457.1	7,195.7	18.8	19.0	127.78	-442.8	310.1	278.6	247.6	30.94	9.002	
7,350.0	7,041.9	7,522.8	7,210.7	19.6	20.0	127.96	-441.8	374.0	279.2	247.0	32.16	8.681	
7,400.0	7,049.0	7,588.6	7,219.9	20.6	21.1	127.95	-440.8	439.1	279.1	245.5	33.59	8.310	
7,450.0	7,052.5	7,654.3	7,223.0	21.5	22.4	127.74	-439.9	504.7	278.4	243.2	35.22	7.905	
7,476.0	7,053.0	7,680.5	7,223.0	22.0	22.9	127.68	-439.5	531.0	278.1	242.1	35.98	7.731	
7,500.0	7,053.0	7,704.6	7,223.0	22.5	23.4	127.68	-439.1	555.0	278.1	241.4	36.74	7.570	
7,600.0	7,053.0	7,804.6	7,223.0	24.6	25.5	127.68	-437.6	655.0	278.1	238.0	40.07	6.940	
7,700.0	7,053.0	7,904.6	7,223.0	26.9	27.7	127.68	-436.1	755.0	278.1	234.5	43.62	6.375	
7,800.0	7,053.0	8,004.6	7,223.0	29.2	30.0	127.68	-434.6	855.0	278.1	230.8	47.34	5.874	
7,900.0	7,053.0	8,104.6	7,223.0	31.6	32.4	127.68	-433.0	954.9	278.1	226.9	51.20	5.432	
8,000.0	7,053.0	8,204.6	7,223.0	34.1	34.8	127.68	-431.5	1,054.9	278.1	223.0	55.15	5.043	
8,100.0	7,053.0	8,304.6	7,223.0	36.6	37.3	127.68	-430.0	1,154.9	278.1	218.9	59.19	4.698	
8,200.0	7,053.0	8,404.6	7,223.0	39.1	39.9	127.68	-428.5	1,254.9	278.1	214.8	63.30	4.394	
8,300.0	7,053.0	8,504.6	7,223.0	41.7	42.4	127.68	-427.0	1,354.9	278.1	210.7	67.46	4.123	
8,400.0	7,053.0	8,604.6	7,223.0	44.4	45.0	127.68	-425.5	1,454.9	278.1	206.4	71.67	3.880	
8,500.0	7,053.0	8,704.6	7,223.0	47.0	47.7	127.68	-424.0	1,554.9	278.1	202.2	75.92	3.663	
8,600.0	7,053.0	8,804.6	7,223.0	49.6	50.3	127.68	-422.5	1,654.9	278.1	197.9	80.19	3.468	
8,700.0	7,053.0	8,904.6	7,223.0	52.3	53.0	127.68	-421.0	1,754.8	278.1	193.6	84.50	3.291	

CC - Min centre to center distance or convergent point, SF - min separation factor, ES - min ellipse separation

Company:	Synergy Resources	Local Co-ordinate Reference:	Well SRC Wiedeman A-5-4NHZ
Project:	Sec.5-T5N-R66W	TVD Reference:	WELL @ 4796.0ft (RKB - 13')
Reference Site:	SRC Wiedeman Pad Sec.5-T5N-R66W	MD Reference:	WELL @ 4796.0ft (RKB - 13')
Site Error:	0.0ft	North Reference:	True
Reference Well:	SRC Wiedeman A-5-4NHZ	Survey Calculation Method:	Minimum Curvature
Well Error:	0.0ft	Output errors are at	2.00 sigma
Reference Wellbore	Wellbore #1	Database:	Landmark
Reference Design:	Plan #1 (6-24-14)	Offset TVD Reference:	Offset Datum

Offset Design SRC Wiedeman Pad Sec.5-T5N-R66W - SRC Wiedeman A-5-4CHZ - Wellbore #1 - Plan #1 (6-24-14)													Offset Site Error:	0.0 ft
Survey Program: 0-MWD													Offset Well Error:	0.0 ft
Reference		Offset		Semi Major Axis			Distance							Warning
Measured Depth (ft)	Vertical Depth (ft)	Measured Depth (ft)	Vertical Depth (ft)	Reference (ft)	Offset (ft)	Highside Toolface (°)	Offset Wellbore Centre +N/-S (ft)	+E/-W (ft)	Between Centres (ft)	Between Ellipses (ft)	Minimum Separation (ft)	Separation Factor		
8,800.0	7,053.0	9,004.6	7,223.0	55.0	55.6	127.68	-419.4	1,854.8	278.1	189.3	88.82	3.131		
8,900.0	7,053.0	9,104.6	7,223.0	57.7	58.3	127.68	-417.9	1,954.8	278.1	184.9	93.17	2.985		
9,000.0	7,053.0	9,204.6	7,223.0	60.4	61.0	127.68	-416.4	2,054.8	278.1	180.6	97.54	2.851		
9,100.0	7,053.0	9,304.6	7,223.0	63.1	63.7	127.68	-414.9	2,154.8	278.1	176.2	101.92	2.729		
9,200.0	7,053.0	9,404.6	7,223.0	65.8	66.4	127.68	-413.4	2,254.8	278.1	171.8	106.31	2.616		
9,300.0	7,053.0	9,504.6	7,223.0	68.6	69.2	127.68	-411.9	2,354.8	278.1	167.4	110.71	2.512		
9,400.0	7,053.0	9,604.6	7,223.0	71.3	71.9	127.68	-410.4	2,454.8	278.1	163.0	115.13	2.416		
9,500.0	7,053.0	9,704.6	7,223.0	74.0	74.6	127.68	-408.9	2,554.8	278.1	158.6	119.55	2.326		
9,600.0	7,053.0	9,804.6	7,223.0	76.8	77.4	127.68	-407.3	2,654.7	278.1	154.1	123.98	2.243		
9,700.0	7,053.0	9,904.6	7,223.0	79.5	80.1	127.68	-405.8	2,754.7	278.1	149.7	128.42	2.166		
9,800.0	7,053.0	10,004.6	7,223.0	82.3	82.9	127.68	-404.3	2,854.7	278.1	145.2	132.87	2.093		
9,900.0	7,053.0	10,104.6	7,223.0	85.0	85.6	127.68	-402.8	2,954.7	278.1	140.8	137.32	2.025		
10,000.0	7,053.0	10,204.6	7,223.0	87.8	88.4	127.68	-401.3	3,054.7	278.1	136.3	141.78	1.962		
10,100.0	7,053.0	10,304.6	7,223.0	90.6	91.1	127.68	-399.8	3,154.7	278.1	131.9	146.24	1.902		
10,200.0	7,053.0	10,404.6	7,223.0	93.3	93.9	127.68	-398.3	3,254.7	278.1	127.4	150.70	1.845		
10,300.0	7,053.0	10,504.6	7,223.0	96.1	96.6	127.68	-396.8	3,354.7	278.1	122.9	155.18	1.792		
10,400.0	7,053.0	10,604.6	7,223.0	98.9	99.4	127.68	-395.2	3,454.7	278.1	118.5	159.65	1.742		
10,500.0	7,053.0	10,704.6	7,223.0	101.6	102.2	127.68	-393.7	3,554.6	278.1	114.0	164.13	1.694		
10,600.0	7,053.0	10,804.6	7,223.0	104.4	104.9	127.68	-392.2	3,654.6	278.1	109.5	168.61	1.649		
10,700.0	7,053.0	10,904.6	7,223.0	107.2	107.7	127.68	-390.7	3,754.6	278.1	105.0	173.09	1.607		
10,800.0	7,053.0	11,004.6	7,223.0	110.0	110.5	127.68	-389.2	3,854.6	278.1	100.5	177.58	1.566		
10,900.0	7,053.0	11,104.6	7,223.0	112.7	113.3	127.68	-387.7	3,954.6	278.1	96.0	182.07	1.528		
11,000.0	7,053.0	11,204.6	7,223.0	115.5	116.0	127.68	-386.2	4,054.6	278.1	91.6	186.56	1.491 Level 3		
11,100.0	7,053.0	11,304.6	7,223.0	118.3	118.8	127.68	-384.7	4,154.6	278.1	87.1	191.05	1.456 Level 3		
11,200.0	7,053.0	11,404.6	7,223.0	121.1	121.6	127.68	-383.2	4,254.6	278.1	82.6	195.55	1.422 Level 3		
11,300.0	7,053.0	11,504.6	7,223.0	123.9	124.4	127.68	-381.6	4,354.5	278.1	78.1	200.04	1.390 Level 3		
11,400.0	7,053.0	11,604.6	7,223.0	126.6	127.1	127.68	-380.1	4,454.5	278.1	73.6	204.54	1.360 Level 3		
11,500.0	7,053.0	11,704.6	7,223.0	129.4	129.9	127.68	-378.6	4,554.5	278.1	69.1	209.04	1.330 Level 3		
11,549.7	7,053.0	11,754.2	7,223.0	130.8	131.3	127.68	-377.9	4,604.2	278.1	66.8	211.28	1.316 Level 3		
11,582.0	7,053.0	11,764.6	7,223.0	131.7	131.6	127.68	-377.7	4,614.6	279.0	66.7	212.24	1.314 Level 3, SF		

Company:	Synergy Resources	Local Co-ordinate Reference:	Well SRC Wiedeman A-5-4NHZ
Project:	Sec.5-T5N-R66W	TVD Reference:	WELL @ 4796.0ft (RKB - 13')
Reference Site:	SRC Wiedeman Pad Sec.5-T5N-R66W	MD Reference:	WELL @ 4796.0ft (RKB - 13')
Site Error:	0.0ft	North Reference:	True
Reference Well:	SRC Wiedeman A-5-4NHZ	Survey Calculation Method:	Minimum Curvature
Well Error:	0.0ft	Output errors are at	2.00 sigma
Reference Wellbore	Wellbore #1	Database:	Landmark
Reference Design:	Plan #1 (6-24-14)	Offset TVD Reference:	Offset Datum

Reference Depths are relative to WELL @ 4796.0ft (RKB - 13')

Offset Depths are relative to Offset Datum

Central Meridian is -105.500000 °

Coordinates are relative to: SRC Wiedeman A-5-4NHZ

Coordinate System is US State Plane 1983, Colorado Northern Zone

Grid Convergence at Surface is: 0.45°



Company:	Synergy Resources	Local Co-ordinate Reference:	Well SRC Wiedeman A-5-4NHZ
Project:	Sec.5-T5N-R66W	TVD Reference:	WELL @ 4796.0ft (RKB - 13')
Reference Site:	SRC Wiedeman Pad Sec.5-T5N-R66W	MD Reference:	WELL @ 4796.0ft (RKB - 13')
Site Error:	0.0ft	North Reference:	True
Reference Well:	SRC Wiedeman A-5-4NHZ	Survey Calculation Method:	Minimum Curvature
Well Error:	0.0ft	Output errors are at	2.00 sigma
Reference Wellbore	Wellbore #1	Database:	Landmark
Reference Design:	Plan #1 (6-24-14)	Offset TVD Reference:	Offset Datum

Reference Depths are relative to WELL @ 4796.0ft (RKB - 13')

Offset Depths are relative to Offset Datum

Central Meridian is -105.500000 °

Coordinates are relative to: SRC Wiedeman A-5-4NHZ

Coordinate System is US State Plane 1983, Colorado Northern Zone

Grid Convergence at Surface is: 0.45°

