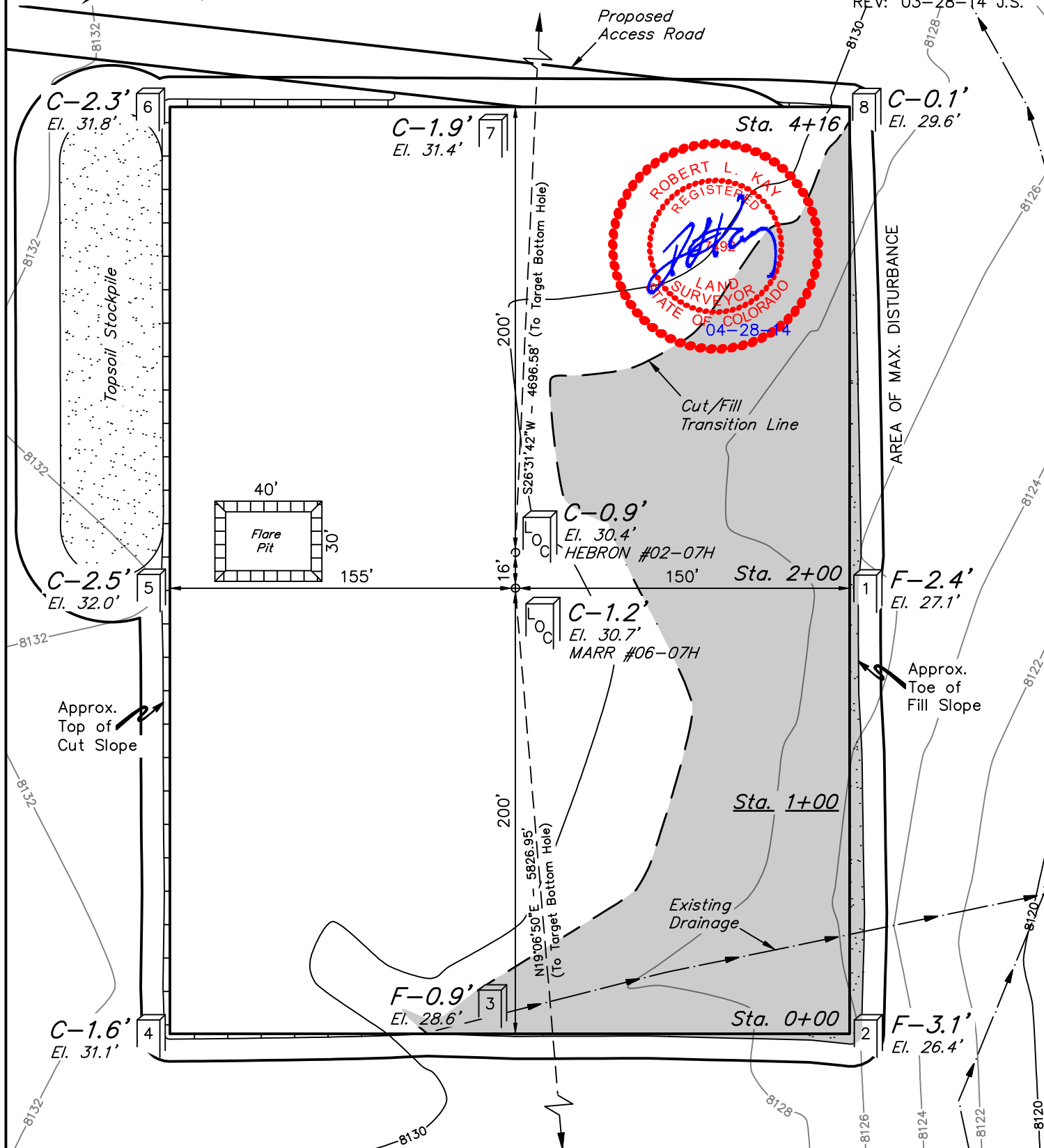


CONSTRUCTION LAYOUT FOR  
HEBRON #02-07H & MARR #06-07H  
SECTION 7, T7N, R80W, 6th P.M.  
NW 1/4 NE 1/4

REV: 03-28-14 J.S.



Elev. Ungraded Ground At MARR #06-07H Loc. Stake = 8130.7'  
FINISHED GRADE ELEV. AT MARR #06-07H LOC. STAKE = 8129.5'

UINTAH ENGINEERING & LAND SURVEYING  
85 So. 200 East \* Vernal, Utah 84078 \* (435) 789-1017

EE3 LLC

FIGURE #2

CONSTRUCTION LAYOUT CROSS SECTIONS FOR  
HEBRON #02-07H & MARR #06-07H  
SECTION 7, T7N, R80W, 6th P.M.  
NW 1/4 NE 1/4

1" = 40'  
X-Section  
Scale  
1" = 100'

DATE: 12-02-08

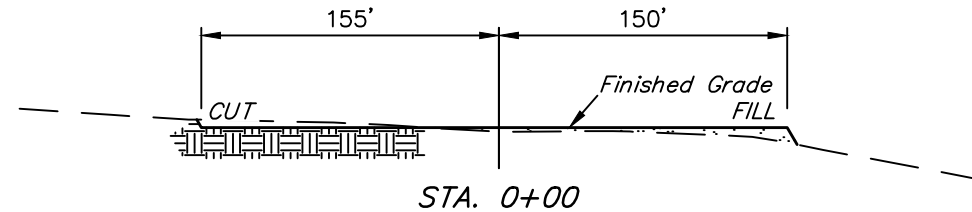
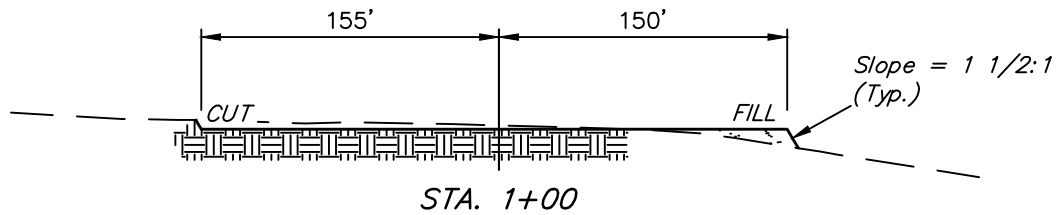
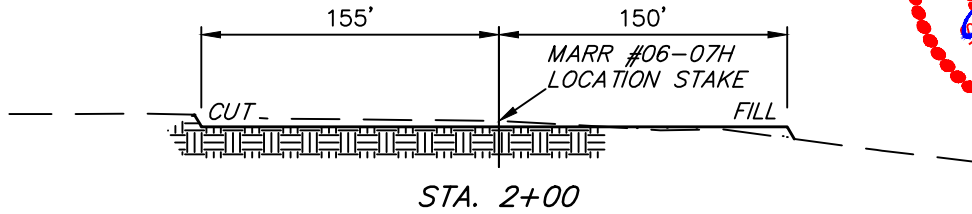
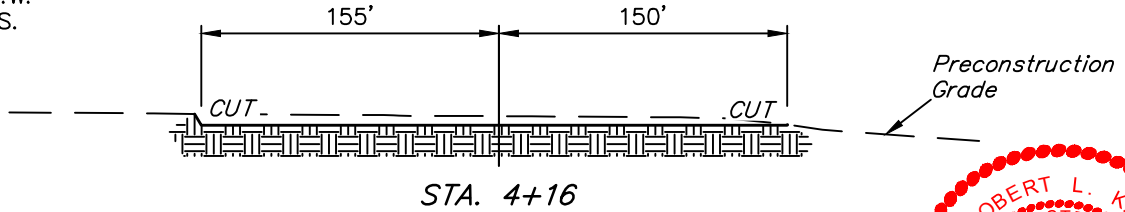
DRAWN BY: C.C.

REV: 04-18-13 B.D.H.

REV: 05-13-13 H.K.W.

REV: 06-17-13 H.K.W.

REV: 03-28-14 J.S.



NOTE:

Topsoil should not be  
Stripped Below Finished  
Grade on Substructure Area.

APPROXIMATE ACREAGE

WELL SITE DISTURBANCE = ± 3.659 ACRES  
ACCESS ROAD DISTURBANCE = ± 1.385 ACRES  
TOTAL = ± 5.044 ACRES

\* NOTE:  
FILL QUANTITY INCLUDES  
5% FOR COMPACTION

APPROXIMATE YARDAGES

(6") Topsoil Stripping = 2,430 Cu. Yds.  
Remaining Location = 2,680 Cu. Yds.  
TOTAL CUT = 5,110 CU. YDS.  
FILL = 2,680 CU. YDS.

EXCESS MATERIAL = 2,430 Cu. Yds.  
Topsoil = 2,430 Cu. Yds.  
EXCESS UNBALANCE = 0 Cu. Yds.  
(After Interim Rehabilitation)

UINTAH ENGINEERING & LAND SURVEYING  
85 So. 200 East \* Vernal, Utah 84078 \* (435) 789-1017