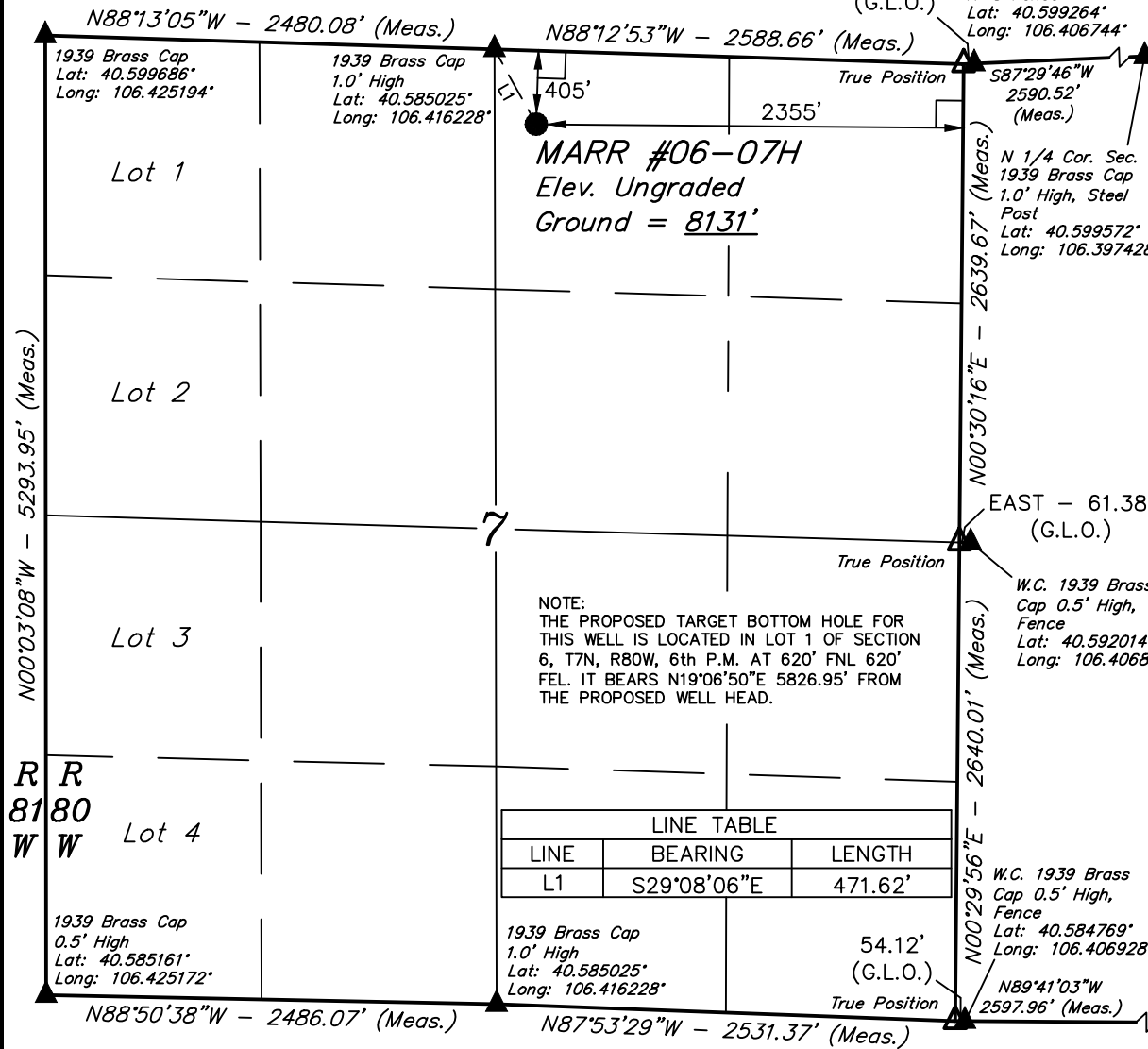


T7N, R80W, 6th P.M.

EE3 LLC.



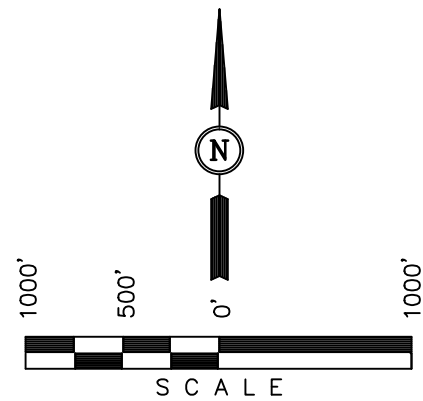
Well location, MARR #06-07H (Surface Location), located as shown in the NW 1/4 NE 1/4 of Section 7, T7N, R80W, 6th P.M., Jackson County, Colorado.

BASIS OF ELEVATION

SPOT ELEVATION LOCATED AT THE SOUTHEAST CORNER OF SECTION 29, T7N, R80W, 6th P.M. TAKEN FROM THE COALMONT QUADRANGLE, COLORADO, JACKSON COUNTY, 7.5 MINUTE QUAD. (TOPOGRAPHIC MAP) PUBLISHED BY THE UNITED STATES DEPARTMENT OF THE INTERIOR, GEOLOGICAL SURVEY. SAID ELEVATION IS MARKED AS BEING 8156 FEET.

BASIS OF BEARINGS

BASIS OF BEARINGS IS A G.P.S. OBSERVATION.



CERTIFICATE

THIS IS TO CERTIFY THAT THE ABOVE PLAT WAS PREPARED FROM FIELD NOTES OF ACTUAL SURVEYS MADE BY ME OR UNDER MY SUPERVISION AND THAT THE SAME ARE TRUE AND CORRECT TO THE BEST OF MY KNOWLEDGE AND BELIEF.

REGISTERED LAND SURVEYOR
 REGISTRATION NO. 17492
 STATE OF COLORADO
 04-18-13

REV: 04-18-13 B.D.H.

LEGEND:

- └─┘ = 90° SYMBOL
- = PROPOSED WELL HEAD.
- ▲ = SECTION CORNERS LOCATED.
- △ = SECTION CORNERS RE-ESTABLISHED. (Not Set on Ground.)

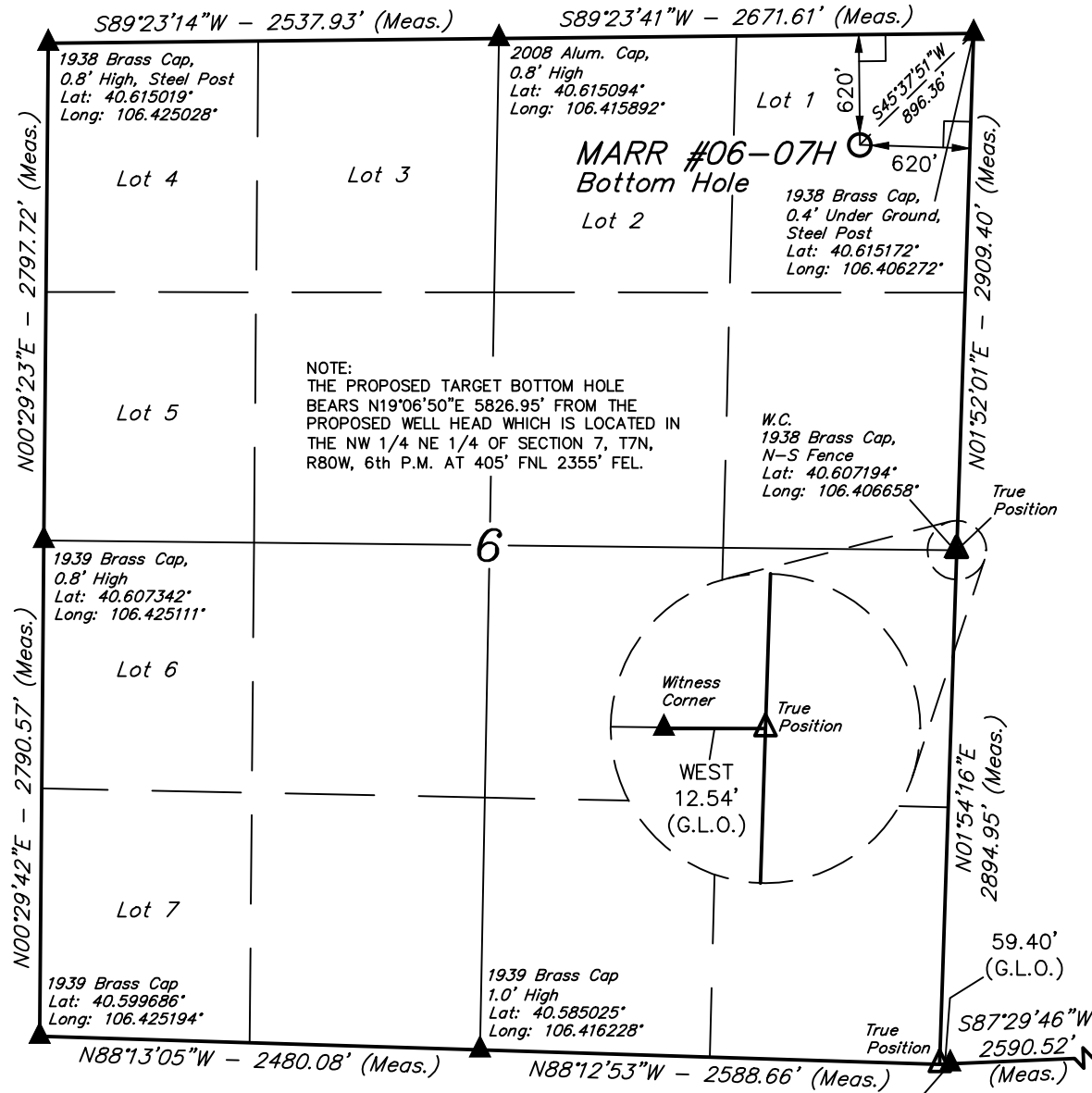
PDOP = 1.2

NAD 83 (SURFACE LOCATION)	
LATITUDE	= 40°35'54.05" (40.598347)
LONGITUDE	= 106°24'55.60" (106.415444)
NAD 27 (SURFACE LOCATION)	
LATITUDE	= 40°35'54.13" (40.598369)
LONGITUDE	= 106°24'53.49" (106.414858)
STATE PLANE NAD 83	
N: 1462131.57	E: 2745789.73
STATE PLANE NAD 27	
N: 462129.47	E: 1745945.96

UINTAH ENGINEERING & LAND SURVEYING 85 SOUTH 200 EAST - VERNAL, UTAH 84078 (435) 789-1017		
SCALE 1" = 1000'	DATE SURVEYED: 11-21-08	DATE DRAWN: 12-02-08
PARTY J.F. C.L. C.C.	REFERENCES G.L.O. PLAT	
WEATHER COOL	FILE EE3 LLC.	

T7N, R80W, 6th P.M.

EE3 LLC.



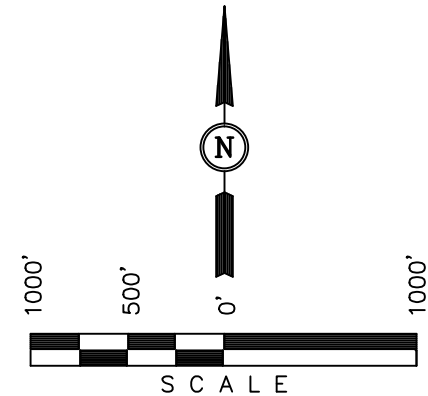
Well location, MARR #06-07H (Target Bottom Hole), located as shown in Lot 1 of Section 6, T7N, R80W, 6th P.M., Jackson County, Colorado.

BASIS OF ELEVATION

SPOT ELEVATION LOCATED ON THE SOUTHEAST CORNER OF SECTION 29, T7N, R80W, 6th P.M. TAKEN FROM THE COALMONT QUADRANGLE, COLORADO, JACKSON COUNTY, 7.5 MINUTE SERIES (TOPOGRAPHICAL MAP) PUBLISHED BY THE UNITED STATES DEPARTMENT OF THE INTERIOR, GEOLOGICAL SURVEY. SAID ELEVATION IS MARKED AS BEING 8156 FEET.

BASIS OF BEARINGS

BASIS OF BEARINGS IS A G.P.S. OBSERVATION.



CERTIFICATE

THIS IS TO CERTIFY THAT THE ABOVE PLAT WAS PREPARED FROM FIELD NOTES OF ACTUAL SURVEYS MADE BY ME OR UNDER MY SUPERVISION AND THAT THE SAME ARE TRUE AND CORRECT TO THE BEST OF MY KNOWLEDGE AND BELIEF.

REGISTERED LAND SURVEYOR
REGISTRATION NO. 17492
STATE OF COLORADO

REV: 04-18-13 B.D.H.

LEGEND:

- └─┘ = 90° SYMBOL
- = PROPOSED BOTTOM HOLE.
- ▲ = SECTION CORNERS LOCATED.
- △ = SECTION CORNERS RE-ESTABLISHED.
- (Not Set on Ground.)

W.C.
1939 Brass Cap
Flush W/ Ground,
N-S Fence
Lat: 40.599264°
Long: 106.406744°

NAD 83 (TARGET BOTTOM HOLE)	
LATITUDE	= 40°36'48.43" (40.613453)
LONGITUDE	= 106°24'30.88" (106.408578)
NAD 27 (TARGET BOTTOM HOLE)	
LATITUDE	= 40°36'48.51" (40.613475)
LONGITUDE	= 106°24'28.77" (106.407992)
STATE PLANE NAD 83	
N: 1467614.86	E: 2747752.86
STATE PLANE NAD 27	
N: 467612.80	E: 1747909.03

UINTAH ENGINEERING & LAND SURVEYING
85 SOUTH 200 EAST - VERNAL, UTAH 84078
(435) 789-1017

SCALE 1" = 1000'	DATE SURVEYED: 11-21-08	DATE DRAWN: 12-02-08
PARTY J.F. C.L. C.C.	REFERENCES G.L.O. PLAT	
WEATHER COOL	FILE EE3 LLC.	

NAD 83 (SURFACE LOCATION)
LATITUDE = 40°35'54.05" (40.598347)
LONGITUDE = 106°24'55.60" (106.415444)
NAD 27 (SURFACE LOCATION)
LATITUDE = 40°35'54.13" (40.598369)
LONGITUDE = 106°24'53.49" (106.414858)
STATE PLANE NAD 83
N: 1462131.57 E: 2745789.73
STATE PLANE NAD 27
N: 462129.47 E: 1745945.96