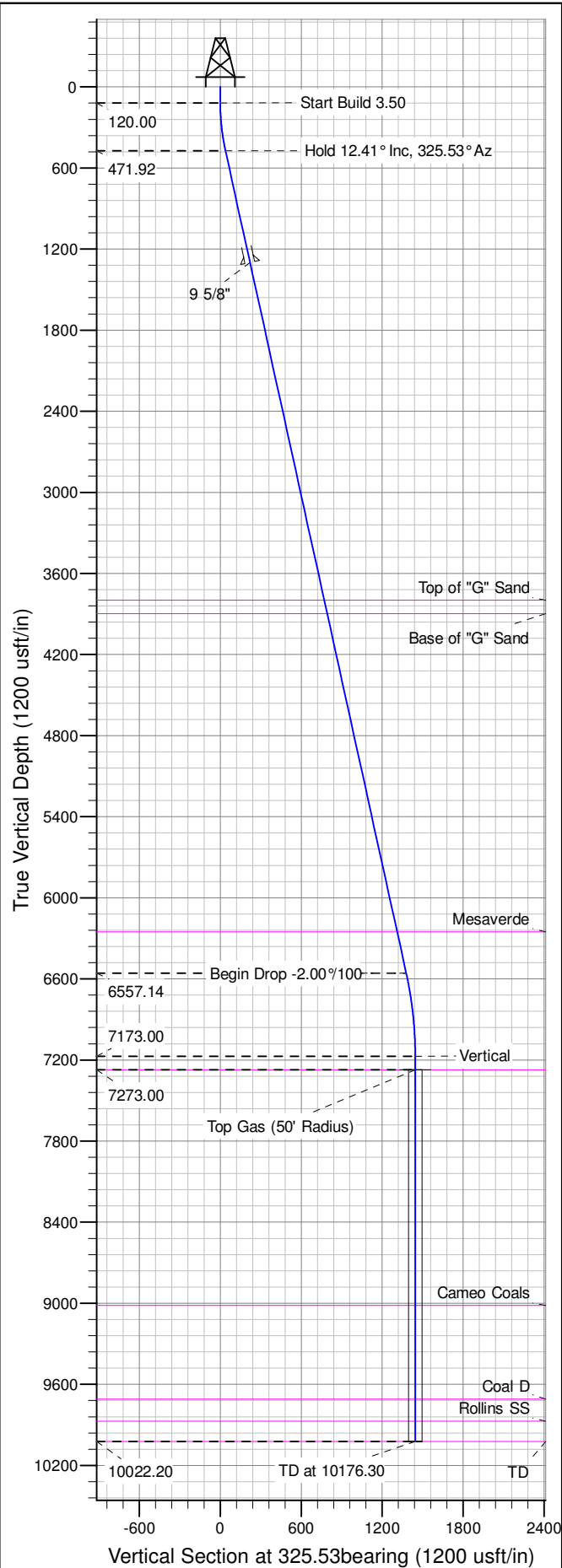
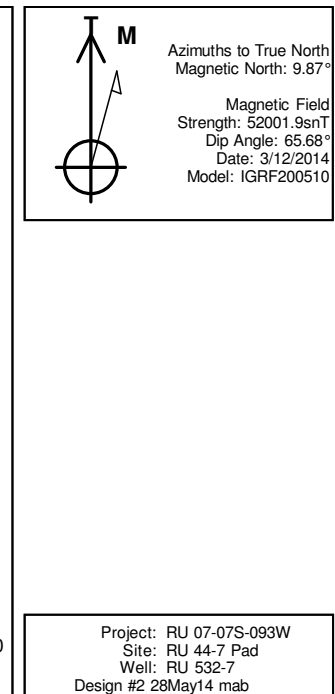
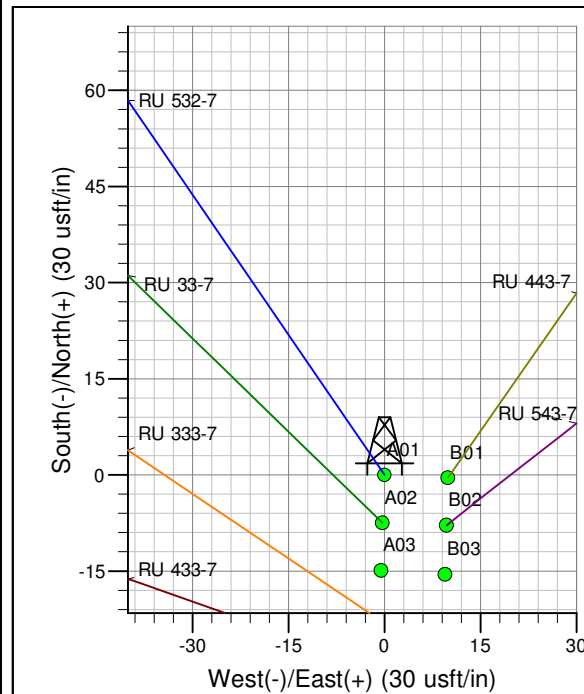
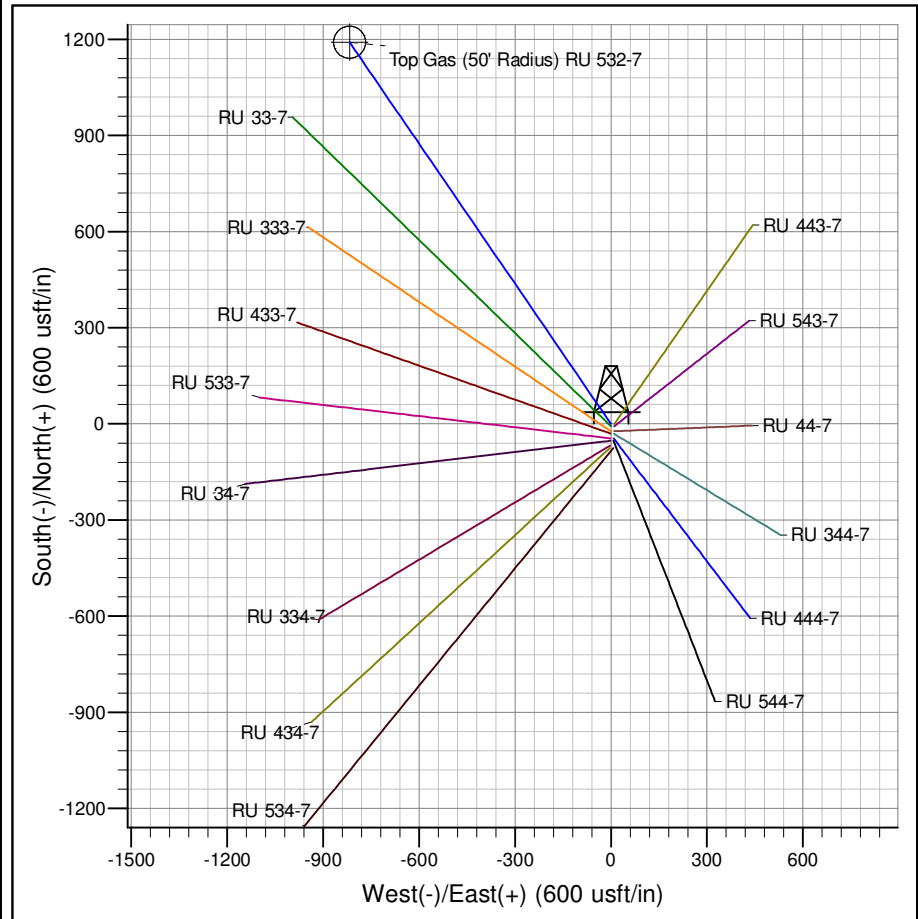




Well Name: RU 532-7  
Surface Location: RU 44-7 Pad  
North American Datum 1983 , US State Plane 1983 , Colorado Central Zone  
Ground Elevation: 7917.00  
+N/-S +E/-W Northing Easting Latitude Longitude Slot  
0.00 0.00 1598876.20000 2347570.30000 39.45490 -107.81084 A01  
KELLY BUSHING @ 7943.00usft (Nabors 576 (26' RKB) kjs)



ANNOTATIONS										
TVD	MD	Inc	Azi	+N/-S	+E/-W	Vsect	Departure	Annotation		
120.00	120.00	0.00	0.00	0.00	0.00	0.00	0.00	Start Build 3.50		
471.92	474.69	12.41	325.53	31.56	-21.66	38.27	38.27	Hold 12.41° Inc, 325.53° Az		
6557.14	6705.59	12.41	325.53	1135.92	-779.69	1377.77	1377.77	Begin Drop -2.00°/100		
7173.00	7326.30	0.00	0.00	1191.15	-817.60	1444.75	1444.75	Vertical		
7273.00	7426.30	0.00	0.00	1191.15	-817.60	1444.75	1444.75	Top Gas		
10022.20	10175.50	0.00	0.00	1191.15	-817.60	1444.75	1444.75	TD at 10176.30		



# **PICEANCE VLY NAD 83**

**RU 07-07S-093W**

**RU 44-7 Pad**

**RU 532-7 - Slot A01**

**Wellbore #1**

**Plan: Design #2 28May14 mab**

## **Standard Planning Report - Geographic**

**12 June, 2014**

**WPX**  
Planning Report - Geographic

<b>Database:</b>	COMPASS-PICEANCE	<b>Local Co-ordinate Reference:</b>	Well RU 532-7 - Slot A01
<b>Company:</b>	PICEANCE VLY NAD 83	<b>TVD Reference:</b>	KELLY BUSHING @ 7943.00usft (Nabors 576 (26' RKB) kjs)
<b>Project:</b>	RU 07-07S-093W	<b>MD Reference:</b>	KELLY BUSHING @ 7943.00usft (Nabors 576 (26' RKB) kjs)
<b>Site:</b>	RU 44-7 Pad	<b>North Reference:</b>	True
<b>Well:</b>	RU 532-7	<b>Survey Calculation Method:</b>	Minimum Curvature
<b>Wellbore:</b>	Wellbore #1		
<b>Design:</b>	Design #2 28May14 mab		

<b>Project</b>	RU 07-07S-093W, Garfield County, CO		
<b>Map System:</b>	US State Plane 1983	<b>System Datum:</b>	Mean Sea Level
<b>Geo Datum:</b>	North American Datum 1983		
<b>Map Zone:</b>	Colorado Central Zone		Using geodetic scale factor

<b>Site</b>	RU 44-7 Pad			
<b>Site Position:</b>		<b>Northing:</b>	1,598,795.70000 usft	<b>Latitude:</b> 39.45468
<b>From:</b> Map		<b>Easting:</b>	2,347,575.10000 usft	<b>Longitude:</b> -107.81082
<b>Position Uncertainty:</b>	0.00 usft	<b>Slot Radius:</b>	13.200 in	<b>Grid Convergence:</b> -1.46 °

<b>Well</b>	RU 532-7 - Slot A01			
<b>Well Position</b>	<b>+N/-S</b>	0.00 usft	<b>Northing:</b>	1,598,876.20000 usft
	<b>+E/-W</b>	0.00 usft	<b>Easting:</b>	2,347,570.30000 usft
<b>Position Uncertainty</b>	0.00 usft		<b>Wellhead Elevation:</b>	0.00 usft
			<b>Ground Level:</b>	7,917.00 usft

<b>Wellbore</b>	Wellbore #1				
<b>Magnetics</b>	<b>Model Name</b>	<b>Sample Date</b>	<b>Declination (°)</b>	<b>Dip Angle (°)</b>	<b>Field Strength (nT)</b>
	IGRF200510	3/12/2014	9.87	65.68	52,002

<b>Design</b>	Design #2 28May14 mab			
<b>Audit Notes:</b>				
<b>Version:</b>	<b>Phase:</b>	PLAN	<b>Tie On Depth:</b>	0.00
<b>Vertical Section:</b>	<b>Depth From (TVD) (usft)</b>	<b>+N/-S (usft)</b>	<b>+E/-W (usft)</b>	<b>Direction (bearing)</b>
	0.00	0.00	0.00	325.53

<b>Plan Sections</b>										
Measured Depth (usft)	Inclination (°)	Azimuth (bearing)	Vertical Depth (usft)	+N/-S (usft)	+E/-W (usft)	Dogleg Rate (°/100usft)	Build Rate (°/100usft)	Turn Rate (°/100usft)	TFO (°)	Target
0.00	0.00	0.00	0.00	0.00	0.00	0.00	0.00	0.00	0.00	
120.00	0.00	0.00	120.00	0.00	0.00	0.00	0.00	0.00	0.00	
474.69	12.41	325.53	471.92	31.56	-21.66	3.50	3.50	0.00	325.53	
6,705.59	12.41	325.53	6,557.14	1,135.92	-779.69	0.00	0.00	0.00	0.00	
7,326.30	0.00	0.00	7,173.00	1,191.15	-817.60	2.00	-2.00	0.00	180.00	
7,426.30	0.00	0.00	7,273.00	1,191.15	-817.60	0.00	0.00	0.00	0.00	Top Gas (50' Radius)
10,176.30	0.00	0.00	10,023.00	1,191.15	-817.60	0.00	0.00	0.00	0.00	

**WPX**  
Planning Report - Geographic

<b>Database:</b>	COMPASS-PICEANCE	<b>Local Co-ordinate Reference:</b>	Well RU 532-7 - Slot A01
<b>Company:</b>	PICEANCE VLY NAD 83	<b>TVD Reference:</b>	KELLY BUSHING @ 7943.00usft (Nabors 576 (26' RKB) kjs)
<b>Project:</b>	RU 07-07S-093W	<b>MD Reference:</b>	KELLY BUSHING @ 7943.00usft (Nabors 576 (26' RKB) kjs)
<b>Site:</b>	RU 44-7 Pad	<b>North Reference:</b>	True
<b>Well:</b>	RU 532-7	<b>Survey Calculation Method:</b>	Minimum Curvature
<b>Wellbore:</b>	Wellbore #1		
<b>Design:</b>	Design #2 28May14 mab		

Planned Survey										
Measured Depth (usft)	Inclination (°)	Azimuth (bearing)	Vertical Depth (usft)	+N/-S (usft)	+E/-W (usft)	Map Northing (usft)	Map Easting (usft)	Latitude	Longitude	
0.00	0.00	0.00	0.00	0.00	0.00	1,598,876.20000	2,347,570.30000	39.45490	-107.81084	
120.00	0.00	0.00	120.00	0.00	0.00	1,598,876.20000	2,347,570.30000	39.45490	-107.81084	
Start Build 3.50										
200.00	2.80	325.53	199.97	1.61	-1.11	1,598,877.83886	2,347,569.23539	39.45491	-107.81084	
400.00	9.80	325.53	398.64	19.69	-13.52	1,598,896.23109	2,347,557.28765	39.45496	-107.81089	
474.69	12.41	325.53	471.92	31.56	-21.66	1,598,908.29527	2,347,549.45066	39.45499	-107.81092	
Hold 12.41° Inc, 325.53° Az										
600.00	12.41	325.53	594.30	53.77	-36.90	1,598,930.88512	2,347,534.77612	39.45505	-107.81097	
800.00	12.41	325.53	789.63	89.21	-61.24	1,598,966.93889	2,347,511.35530	39.45515	-107.81106	
1,000.00	12.41	325.53	984.95	124.66	-85.57	1,599,002.99267	2,347,487.93448	39.45525	-107.81114	
1,200.00	12.41	325.53	1,180.27	160.11	-109.90	1,599,039.04644	2,347,464.51366	39.45534	-107.81123	
1,322.59	12.41	325.53	1,300.00	181.84	-124.81	1,599,061.14616	2,347,450.15751	39.45540	-107.81128	
9 5/8"										
1,400.00	12.41	325.53	1,375.60	195.56	-134.23	1,599,075.10022	2,347,441.09284	39.45544	-107.81132	
1,600.00	12.41	325.53	1,570.92	231.01	-158.56	1,599,111.15400	2,347,417.67202	39.45554	-107.81140	
1,800.00	12.41	325.53	1,766.24	266.45	-182.89	1,599,147.20778	2,347,394.25120	39.45564	-107.81149	
2,000.00	12.41	325.53	1,961.57	301.90	-207.22	1,599,183.26156	2,347,370.83038	39.45573	-107.81157	
2,200.00	12.41	325.53	2,156.89	337.35	-231.56	1,599,219.31534	2,347,347.40956	39.45583	-107.81166	
2,400.00	12.41	325.53	2,352.22	372.80	-255.89	1,599,255.36911	2,347,323.98874	39.45593	-107.81175	
2,600.00	12.41	325.53	2,547.54	408.25	-280.22	1,599,291.42289	2,347,300.56792	39.45603	-107.81183	
2,800.00	12.41	325.53	2,742.86	443.69	-304.55	1,599,327.47667	2,347,277.14710	39.45612	-107.81192	
3,000.00	12.41	325.53	2,938.19	479.14	-328.88	1,599,363.53045	2,347,253.72628	39.45622	-107.81200	
3,200.00	12.41	325.53	3,133.51	514.59	-353.21	1,599,399.58423	2,347,230.30546	39.45632	-107.81209	
3,400.00	12.41	325.53	3,328.84	550.04	-377.54	1,599,435.63800	2,347,206.88464	39.45641	-107.81218	
3,600.00	12.41	325.53	3,524.16	585.49	-401.87	1,599,471.69178	2,347,183.46383	39.45651	-107.81226	
3,800.00	12.41	325.53	3,719.48	620.93	-426.21	1,599,507.74556	2,347,160.04301	39.45661	-107.81235	
3,879.37	12.41	325.53	3,797.00	635.00	-435.86	1,599,522.05384	2,347,150.74823	39.45665	-107.81238	
Top of "G" Sand										
3,981.77	12.41	325.53	3,897.00	653.15	-448.32	1,599,540.51230	2,347,138.75747	39.45670	-107.81243	
Base of "G" Sand										
4,000.00	12.41	325.53	3,914.81	656.38	-450.54	1,599,543.79933	2,347,136.62218	39.45671	-107.81244	
4,200.00	12.41	325.53	4,110.13	691.83	-474.87	1,599,579.85311	2,347,113.20136	39.45680	-107.81252	
4,400.00	12.41	325.53	4,305.46	727.28	-499.20	1,599,615.90689	2,347,089.78054	39.45690	-107.81261	
4,600.00	12.41	325.53	4,500.78	762.73	-523.53	1,599,651.96067	2,347,066.35972	39.45700	-107.81269	
4,800.00	12.41	325.53	4,696.10	798.17	-547.86	1,599,688.01445	2,347,042.93890	39.45710	-107.81278	
5,000.00	12.41	325.53	4,891.43	833.62	-572.19	1,599,724.06823	2,347,019.51808	39.45719	-107.81287	
5,200.00	12.41	325.53	5,086.75	869.07	-596.53	1,599,760.12201	2,346,996.09726	39.45729	-107.81295	
5,400.00	12.41	325.53	5,282.08	904.52	-620.86	1,599,796.17579	2,346,972.67644	39.45739	-107.81304	
5,600.00	12.41	325.53	5,477.40	939.97	-645.19	1,599,832.22955	2,346,949.25562	39.45748	-107.81312	
5,800.00	12.41	325.53	5,672.72	975.42	-669.52	1,599,868.28333	2,346,925.83480	39.45758	-107.81321	
6,000.00	12.41	325.53	5,868.05	1,010.86	-693.85	1,599,904.33711	2,346,902.41398	39.45768	-107.81330	
6,200.00	12.41	325.53	6,063.37	1,046.31	-718.18	1,599,940.39089	2,346,878.99316	39.45778	-107.81338	
6,393.15	12.41	325.53	6,252.00	1,080.54	-741.68	1,599,975.20897	2,346,856.37506	39.45787	-107.81347	
Mesaverde										
6,400.00	12.41	325.53	6,258.69	1,081.76	-742.51	1,599,976.44467	2,346,855.57234	39.45787	-107.81347	
6,600.00	12.41	325.53	6,454.02	1,117.21	-766.84	1,600,012.49845	2,346,832.15152	39.45797	-107.81356	
6,705.59	12.41	325.53	6,557.14	1,135.92	-779.69	1,600,031.53328	2,346,819.78634	39.45802	-107.81360	
Begin Drop -2.00°/100										
6,800.00	10.53	325.53	6,649.66	1,151.40	-790.31	1,600,047.27529	2,346,809.56021	39.45807	-107.81364	
7,000.00	6.53	325.53	6,847.41	1,175.84	-807.09	1,600,072.13454	2,346,793.41145	39.45813	-107.81370	
7,200.00	2.53	325.53	7,046.75	1,188.85	-816.02	1,600,085.36593	2,346,784.81624	39.45817	-107.81373	

**WPX**  
Planning Report - Geographic

<b>Database:</b>	COMPASS-PICEANCE	<b>Local Co-ordinate Reference:</b>	Well RU 532-7 - Slot A01
<b>Company:</b>	PICEANCE VLY NAD 83	<b>TVD Reference:</b>	KELLY BUSHING @ 7943.00usft (Nabors 576 (26' RKB) kjs)
<b>Project:</b>	RU 07-07S-093W	<b>MD Reference:</b>	KELLY BUSHING @ 7943.00usft (Nabors 576 (26' RKB) kjs)
<b>Site:</b>	RU 44-7 Pad	<b>North Reference:</b>	True
<b>Well:</b>	RU 532-7	<b>Survey Calculation Method:</b>	Minimum Curvature
<b>Wellbore:</b>	Wellbore #1		
<b>Design:</b>	Design #2 28May14 mab		

Planned Survey									
Measured Depth (usft)	Inclination (°)	Azimuth (bearing)	Vertical Depth (usft)	+N/-S (usft)	+E/-W (usft)	Map Northing (usft)	Map Easting (usft)	Latitude	Longitude
7,326.30	0.00	0.00	7,173.00	1,191.15	-817.60	1,600,087.70000	2,346,783.30000	39.45817	-107.81374
<b>Vertical</b>									
7,400.00	0.00	0.00	7,246.70	1,191.15	-817.60	1,600,087.70000	2,346,783.30000	39.45817	-107.81374
7,426.30	0.00	0.00	7,273.00	1,191.15	-817.60	1,600,087.70000	2,346,783.30000	39.45817	-107.81374
<b>Top Gas - Approx. Top Gas</b>									
7,600.00	0.00	0.00	7,446.70	1,191.15	-817.60	1,600,087.70000	2,346,783.30000	39.45817	-107.81374
7,800.00	0.00	0.00	7,646.70	1,191.15	-817.60	1,600,087.70000	2,346,783.30000	39.45817	-107.81374
8,000.00	0.00	0.00	7,846.70	1,191.15	-817.60	1,600,087.70000	2,346,783.30000	39.45817	-107.81374
8,200.00	0.00	0.00	8,046.70	1,191.15	-817.60	1,600,087.70000	2,346,783.30000	39.45817	-107.81374
8,400.00	0.00	0.00	8,246.70	1,191.15	-817.60	1,600,087.70000	2,346,783.30000	39.45817	-107.81374
8,600.00	0.00	0.00	8,446.70	1,191.15	-817.60	1,600,087.70000	2,346,783.30000	39.45817	-107.81374
8,800.00	0.00	0.00	8,646.70	1,191.15	-817.60	1,600,087.70000	2,346,783.30000	39.45817	-107.81374
9,000.00	0.00	0.00	8,846.70	1,191.15	-817.60	1,600,087.70000	2,346,783.30000	39.45817	-107.81374
9,170.30	0.00	0.00	9,017.00	1,191.15	-817.60	1,600,087.70000	2,346,783.30000	39.45817	-107.81374
<b>Cameo Coals</b>									
9,200.00	0.00	0.00	9,046.70	1,191.15	-817.60	1,600,087.70000	2,346,783.30000	39.45817	-107.81374
9,400.00	0.00	0.00	9,246.70	1,191.15	-817.60	1,600,087.70000	2,346,783.30000	39.45817	-107.81374
9,600.00	0.00	0.00	9,446.70	1,191.15	-817.60	1,600,087.70000	2,346,783.30000	39.45817	-107.81374
9,800.00	0.00	0.00	9,646.70	1,191.15	-817.60	1,600,087.70000	2,346,783.30000	39.45817	-107.81374
9,862.30	0.00	0.00	9,709.00	1,191.15	-817.60	1,600,087.70000	2,346,783.30000	39.45817	-107.81374
<b>Coal D</b>									
10,000.00	0.00	0.00	9,846.70	1,191.15	-817.60	1,600,087.70000	2,346,783.30000	39.45817	-107.81374
10,026.30	0.00	0.00	9,873.00	1,191.15	-817.60	1,600,087.70000	2,346,783.30000	39.45817	-107.81374
<b>Rollins SS</b>									
10,175.50	0.00	0.00	10,022.20	1,191.15	-817.60	1,600,087.70000	2,346,783.30000	39.45817	-107.81374
<b>TD at 10176.30</b>									
10,176.30	0.00	0.00	10,023.00	1,191.15	-817.60	1,600,087.70000	2,346,783.30000	39.45817	-107.81374
<b>TD</b>									

Design Targets									
Target Name - hit/miss target - Shape	Dip Angle (°)	Dip Dir. (bearing)	TVD (usft)	+N/-S (usft)	+E/-W (usft)	Northing (usft)	Easting (usft)	Latitude	Longitude
Top Gas (50' Radius) RL - plan hits target center - Circle (radius 50.00)	0.00	0.00	7,273.00	1,191.15	-817.60	1,600,087.70000	2,346,783.30000	39.45817	-107.81374

Casing Points					
Measured Depth (usft)	Vertical Depth (usft)	Name	Casing Diameter (in)	Hole Diameter (in)	
1,322.59	1,300.00	9 5/8"	9.625	13.500	

**WPX**  
Planning Report - Geographic

<b>Database:</b>	COMPASS-PICEANCE	<b>Local Co-ordinate Reference:</b>	Well RU 532-7 - Slot A01
<b>Company:</b>	PICEANCE VLY NAD 83	<b>TVD Reference:</b>	KELLY BUSHING @ 7943.00usft (Nabors 576 (26' RKB) kjs)
<b>Project:</b>	RU 07-07S-093W	<b>MD Reference:</b>	KELLY BUSHING @ 7943.00usft (Nabors 576 (26' RKB) kjs)
<b>Site:</b>	RU 44-7 Pad	<b>North Reference:</b>	True
<b>Well:</b>	RU 532-7	<b>Survey Calculation Method:</b>	Minimum Curvature
<b>Wellbore:</b>	Wellbore #1		
<b>Design:</b>	Design #2 28May14 mab		

Formations						
Measured Depth (usft)	Vertical Depth (usft)	Name	Lithology	Dip (°)	Dip Direction (bearing)	
3,879.37	3,797.00	Top of "G" Sand				
3,981.77	3,897.00	Base of "G" Sand				
6,393.15	6,252.00	Mesaverde				
7,426.30	7,273.00	Approx. Top Gas				
9,170.30	9,017.00	Cameo Coals				
9,862.30	9,709.00	Coal D				
10,026.30	9,873.00	Rollins SS				
10,176.30	10,023.00	TD				

Plan Annotations					
Measured Depth (usft)	Vertical Depth (usft)	Local Coordinates			
		+N/-S (usft)	+E/-W (usft)	Comment	
120.00	120.00	0.00	0.00	Start Build 3.50	
474.69	471.92	31.56	-21.66	Hold 12.41° Inc, 325.53° Az	
6,705.59	6,557.14	1,135.92	-779.69	Begin Drop -2.00°/100	
7,326.30	7,173.00	1,191.15	-817.60	Vertical	
7,426.30	7,273.00	1,191.15	-817.60	Top Gas	
10,175.50	10,022.20	1,191.15	-817.60	TD at 10176.30	