



WELL NO.: GRAY A-16
(2813)
FIELD ...: RANGELY, CO.

SURVEY DATA

05-103-06136

REMARKS

RUN NO. 24

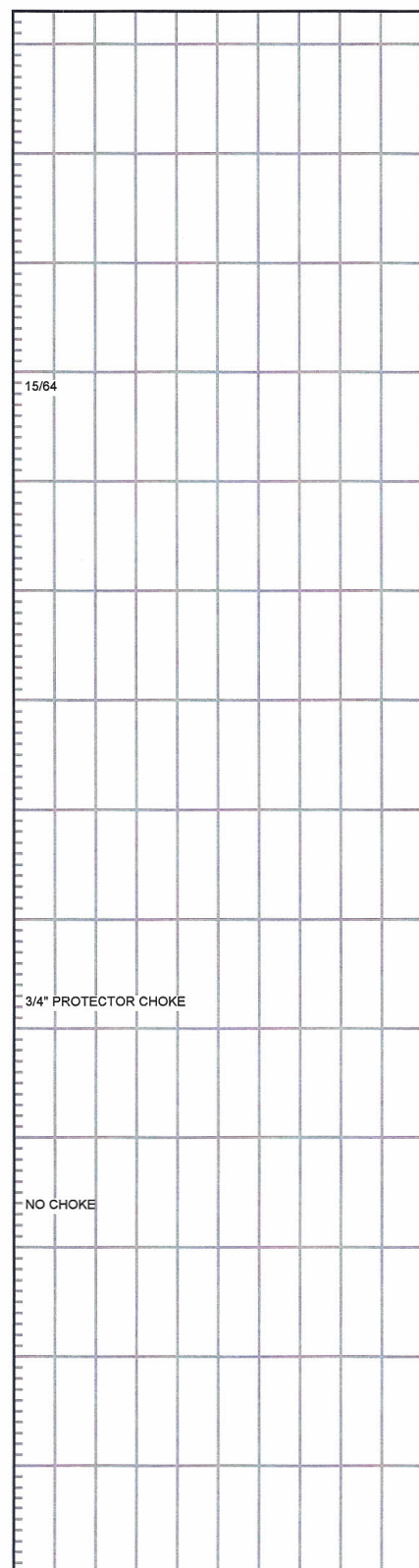
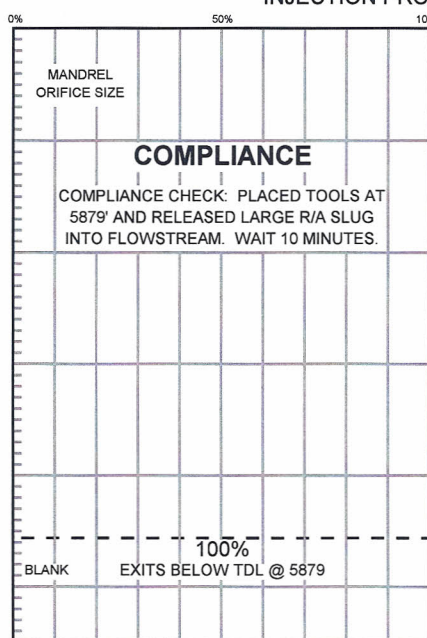
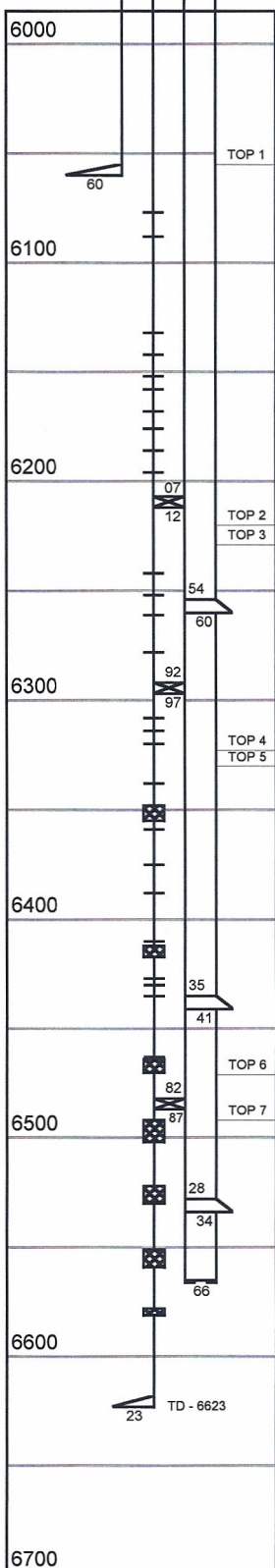
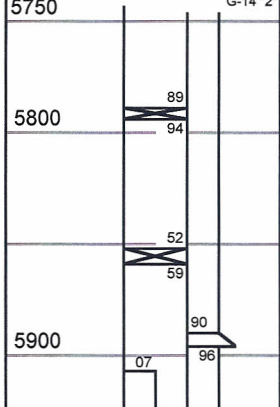
SURVEY TYPE . . .	T-S-T	SURFACE TEMP . .	94.5 F
DATE	6/5/2014	BHT	105.1 F
METERED RATE . .	1140 B/D	TBG PRESSURE . .	1375 PSI
MEASURED RATE:	1195 B/D	CSG PRESSURE . .	0 PSI
DESIRED RATE . .	N/A	PICK-UP	5879" GDA
SERVICE CO. . .	PLS	INJ. FLUID	H2O

R/A TRACER INDICATES TOP PERF AND PACKERS OK.
RECORDED BY: R. ANDREWS
06/05/14, RAN 1.75" GAUGE RING TO 5892±. UNABLE TO GET ANY DEEPER. PULLING TIGHT IN SIE. HAD TO TURN RATE OFF TO GET OUT OF MANDREL.

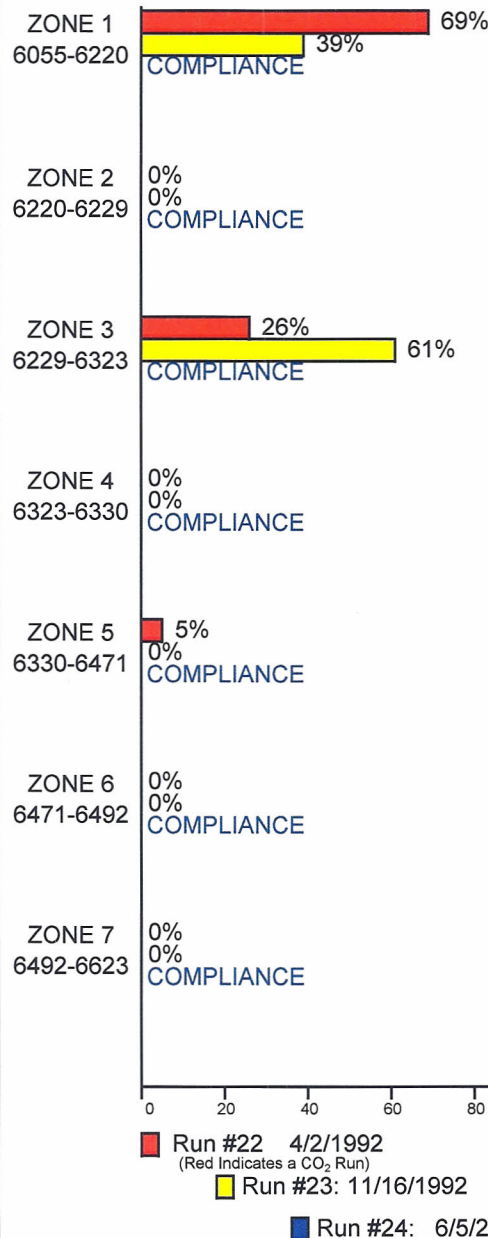
INJECTION PROFILE

MECHANICAL INFORMATION

MECHANICAL INFORMATION	
7" 23# CASING	0-8060'
4-1/2" 11.6# LINER	5907'-6823'
2-7/8" F.L. TUBING	0-5789'
TOP PACKER	5789'-5794'
2-7/8" TUBING JOINT	5794'-5826'
2-7/8" 10' TUBING PUP	5826'-5846'
ON/OFF TOOL 1.875"	5846'-5848'
2-3/8" J-55 P.L. TUBING	5848'-6482'
BOTTOM PACKER	6482'-6487'
2-3/8" J-55 P.L. TUBING	6487'-6565'
7" NIPPLE	6566'
5750'	G-14 "2"



PERCENTAGE INJECTED INTO
ZONE



TEMPERATURES (F°)

DATE	RUN #22 4/2/1992	RUN #23 11/16/1992	RUN #24 6/5/2014
SURFACE	66.0	132.4	94.5
GDA (5879)	146.0	132.0	105.1
6055-6220	---	---	---
6220-6229	---	---	---
6229-6323	---	---	---
6323-6330	---	---	---
6330-6471	---	---	---
6471-6492	---	---	---
6492-6623	---	---	---
RATE (B/D)	1247	1600	1195
PRESS (PSI)	1275	1200	1375