



FILE NO: CH085717	COMPANY WPX ENERGY INC
API NO: 05045222660000	WELL C&C ENERGY GM 522-13
	FIELD GRAND VALLEY
	COUNTY GARFIELD
	STATE CO

Ver. 3.87	LOCATION: S 13 T7S R96W PAD: GM 24-12 RIG: H & P 318	OTHER SERVICES CBL
	SHL: 263 FSL 1036' FWL S12 T7S R96W BHL: 2506' FNL 2010' FWL S13 T7S R96W	
	SEC 13 TWP 7S RGE 96W	

PERMANENT DATUM LOG MEASURED FROM DRILL MEAS. FROM	GL KB KB KB	ELEVATION 5141 FT 24 FT ABOVE P.D.
		ELEVATIONS: KB 5165 FT DF GL 5141 FT

DATE	14-May-2014
RUN	1
TRIP	1
SERVICE ORDER	US086717
DEPTH DRILLER	7045 FT
DEPTH LOGGER	7040 FT
BOTTOM LOGGED INTERVAL	7030 FT
TOP LOGGED INTERVAL	3726 FT
TIME STARTED	2100
TIME FINISHED	0300
OPERATOR RIG TIME	6.0 HR
TYPE OF FLUID IN HOLE	WATER
FLUID DENSITY	NA
FLUID SALINITY	NA
FLUID LEVEL	68 FT
LOGGED CEMENT TOP	NA
WELLHEAD PRESSURE	0 PSI
MAXIMUM HOLE DEVIATION	NA
NOMINAL LOGGING SPEED	15 FMIN
MAX. RECORDED TEMP.	200 DEGF
REFERENCE LOG	BAKER HUGHES BOND LOG
REFERENCE LOG DATE	14-MAY-2014
EQUIP. NO.	6670
LOCATION	GRAND JCT
RECORDED BY	D SMITH/T NEWELL
WITNESSED BY	JEFF BRADY

IN MAKING INTERPRETATIONS OF LOGS OUR EMPLOYEES WILL GIVE THE CUSTOMER THE BENEFIT OF THEIR BEST JUDGEMENT. BUT SINCE ALL INTERPRETATIONS ARE OPINIONS BASED ON INFERENCES FROM ELECTRICAL OR OTHER MEASUREMENTS, WE CANNOT, AND WE DO NOT GUARANTEE THE ACCURACY OR CORRECTNESS OF ANY INTERPRETATION. WE SHALL NOT BE LIABLE OR RESPONSIBLE FOR ANY LOSS, COST, DAMAGES, OR EXPENSES WHATSOEVER INCURRED OR SUSTAINED BY THE CUSTOMER RESULTING FROM ANY INTERPRETATION MADE BY ANY OF OUR EMPLOYEES.

BOREHOLE RECORD		
BIT SIZE	FROM	TO
13.5 IN	0 FT	1517 FT
8.75 IN	1517 FT	7060 FT

CASING RECORD				
SIZE	WEIGHT	GRADE	FROM	TO
9.625 IN	32.2 LB/F		0 FT	1517 FT
4.5 IN	11.6 LB/F	I-80	0 FT	7060 FT

## REMARKS

RUN 1 TRIP 1: ALL DATA ON THIS LOG IS SHIFTED AND DEPTH MATCHED USING THE GAMMA RAY CURVE TO THE BAKER HUGHES BOND LOG 5/14/2014 AT THE CLIENT'S REQUEST

THE DEPTH MATCHING PROCESS CREATES POTENTIAL FOR COLLAR LENGTHS TO VARY FROM THOSE RECORDED ON OTHER CASED HOLE WIRELINE UNITS WITHOUT A GAMMA RAY REFERENCE

AMOUNT OF LINEAR SHIFT IS 6 FEET

LOGGED IN PNC-3D MODE

BHT = 200 DEGF

SJ = 3828'-3850'

THANK YOU FOR USING BAKER HUGHES WIRELINE SERVICES

## EQUIPMENT DATA

RUN	TRIP	TOOL	SERIES NO.	SERIAL NO.	POSITION
1	1	PCM PWR SUP	8250EA	10408796	FREE
1	1	TELE/CCL	8248ED	10590814	FREE
1	1	GAMMA RAY	8262XA	10317216	FREE
1	1	RPM ELEC	8281EA	10294757	FREE
1	1	RPM	8283PA	10466231	FREE
1	1	RPM FA	8281FA	10307727	FREE
1	1	TEMP	8255XA	11774568	FREE

## MAIN SECTION PNC 3-D MODE

ECLIPS 6.2i ECLIPS General Release Rel 6.2i Wed Jun 12 12:21:40 CDT 2013

Updates: 1

Plotted: Sun May 18 10:13:28 2014

## PARAMETER AND FILTER SUMMARY REPORT

FILE: /dat1a/CH085717/n353h05.prm  
 LOGGING MODE: DEPTH DIRECTION: UP  
 TOP DEPTH: 3699.500 ft BOTTOM DEPTH: 7026.250 ft

## SYMMETRIC FILTER

MEASUREMENT TYPE	PARAMETER	VALUE	UNITS	INTERVAL (ft)
GR	FILTER ()	medium (1)		TOP BOTTOM

## RPM PROCESSING

MEASUREMENT TYPE	PARAMETER	VALUE	UNITS	INTERVAL (ft)
PNC Parameters	BOREHOLE CONTENTS	FLUID		TOP BOTTOM
	OPEN/CASED HOLE	CASED HOLE		" "
	BOREHOLE SIZE	8.75	in	" "
	CASING SIZE	4.50	in	" "
	MATRIX	SANDSTONE		" "
	CORRECTION BUFFER	11		" "

## CURVE DESCRIPTION REPORT

CURVE NAME	CREATION DATE	CURVE DESCRIPTION
F1:CCL	May 15 06:38:56 2014	CASING COLLAR LOCATOR
F1:GR	May 15 06:38:56 2014	GAMMA RAY
F1:ISS	May 15 06:38:56 2014	INELASTIC SHORT SPACE COUNT RATE
F1:LS	May 15 06:38:56 2014	LONG SPACE COUNT RATE
F1:RATO	May 15 06:38:57 2014	SHORT/LONG SPACE COUNT RATE RATIO
F1:RICS	May 15 06:38:57 2014	SHORT SPACE INELASTIC TO CAPTURE COUNT RATE RATIO (ISS/CSS)
F1:SGFC	May 15 06:38:57 2014	CORRECTED FORMATION SIGMA
F1:SS	May 15 06:38:57 2014	SHORT SPACE COUNT RATE

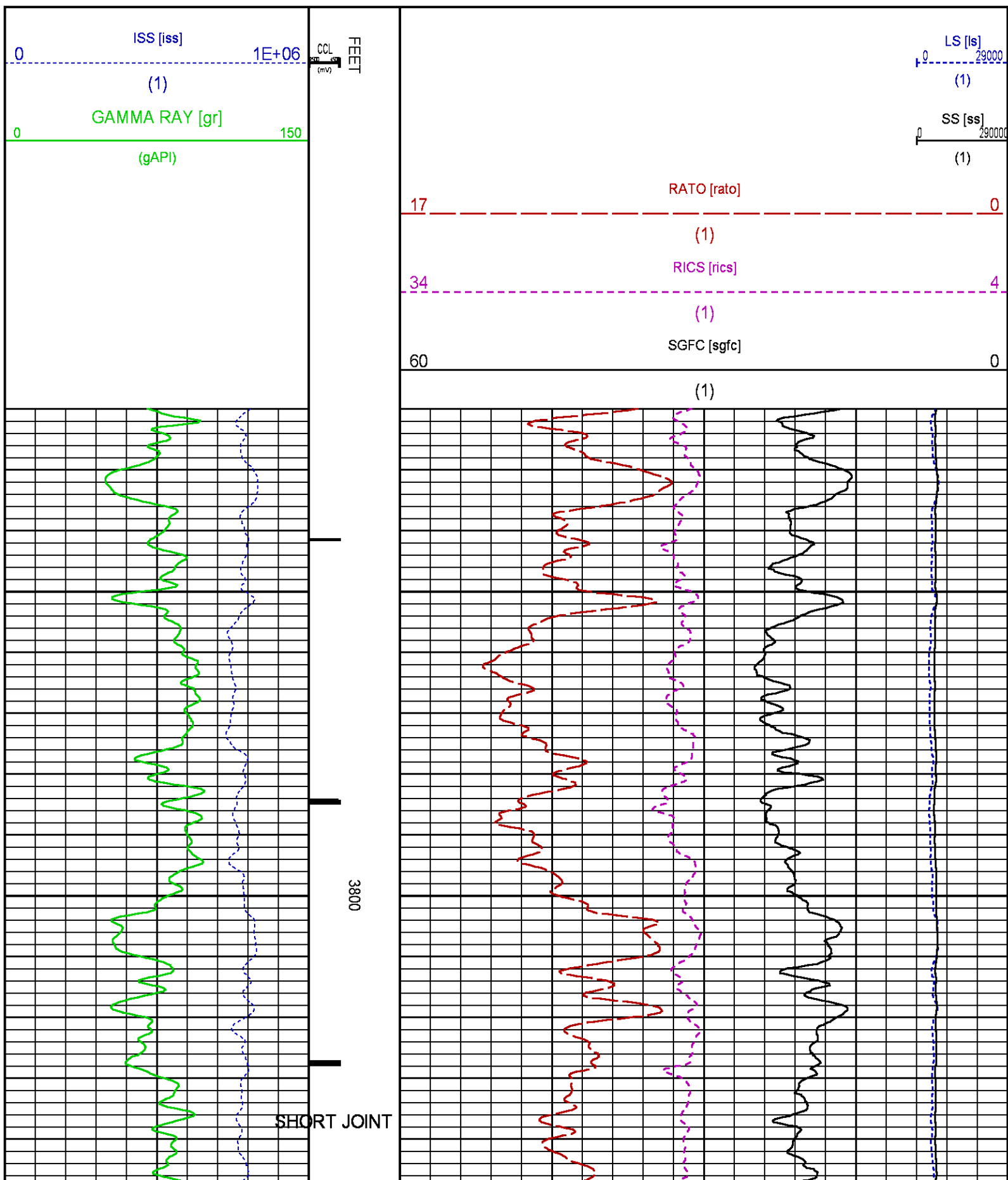
## CURVE MEASURE POINT OFFSET

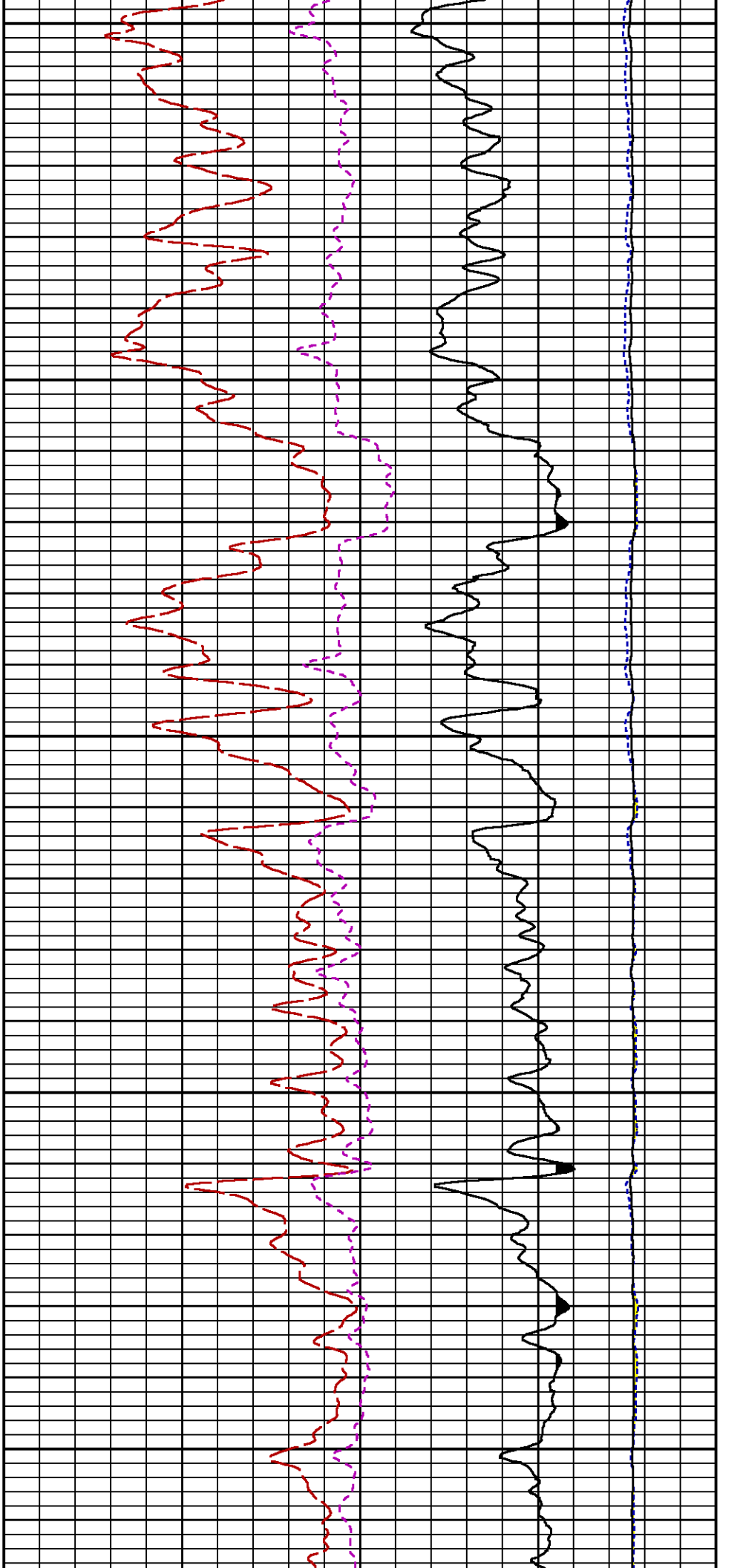
CURVE	OFFSET (ft)	CURVE	OFFSET (ft)	CURVE	OFFSET (ft)	CURVE	OFFSET (ft)
CCL	26.00	ISS	12.75	RATO	12.75	SGFC	12.75
GR	23.00	LS	12.75	RICS	12.75	SS	12.75

Presentation : HL6670:GM\_522\_13\_RPM\_MAIN\_PRESENTATION\_05\_18\_2014.fvpdf [5"/100' Scale]

Plot Interval : 3720 - 7050 Feet

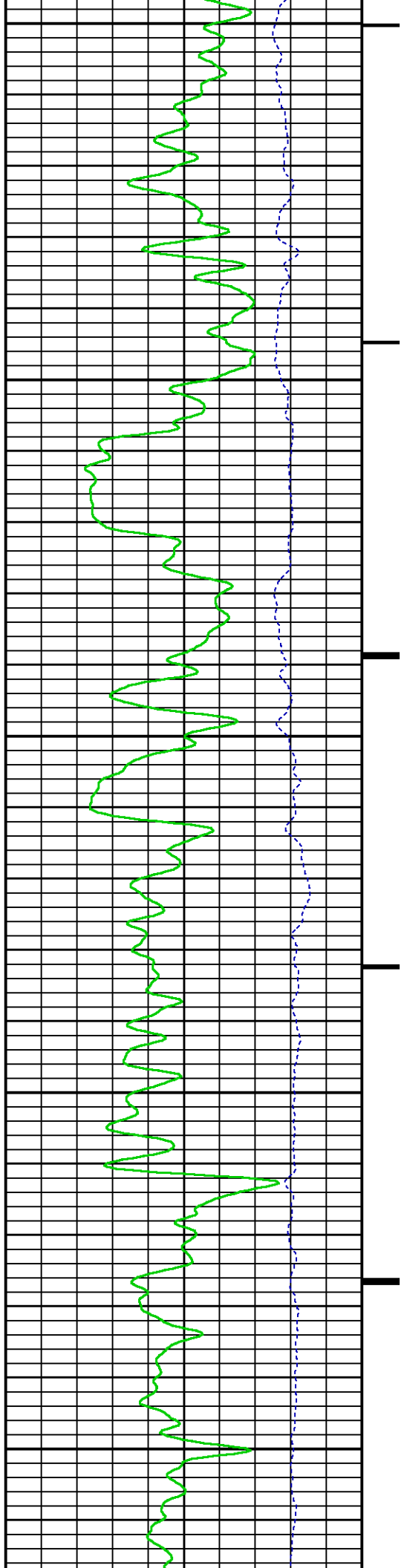
Plot Interval : 5720 - 7030 Feet  
Data File 1 : F1 : HL6670:/dat1a/CH085717/RPM\_MAIN2.XTF  
Created On : May 15 06:38:56 2014  
Company : WPX ENERGY INC  
Well : C&C ENERGY GM 522-13  
Field : GRAND VALLEY  
File Interval : 19.5 - 7033.5 Feet  
OCT : n353h

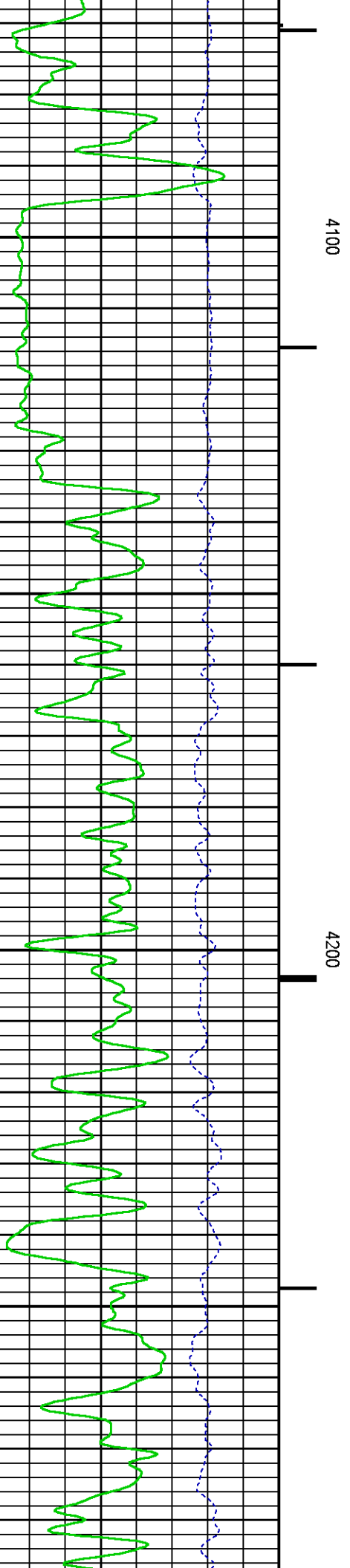
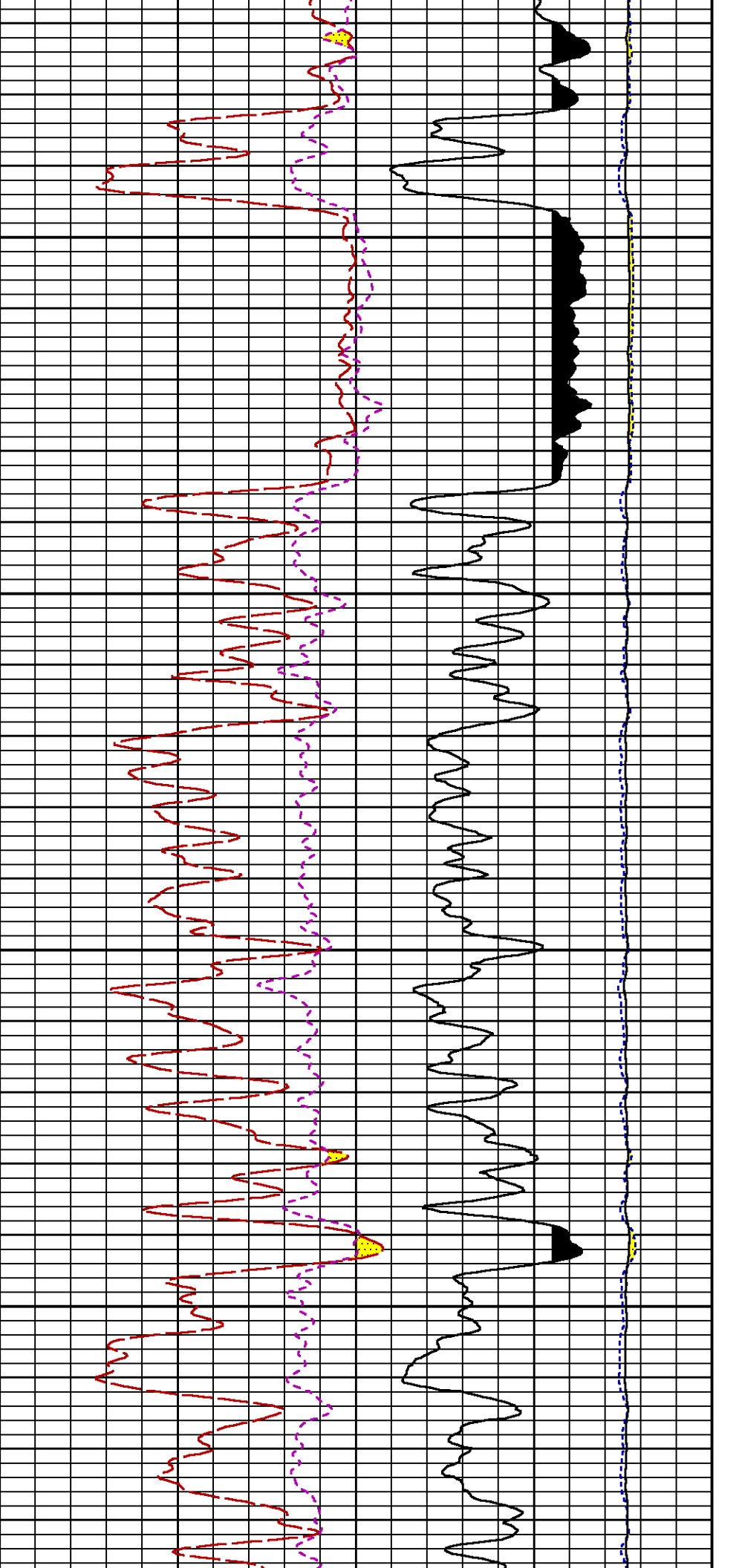


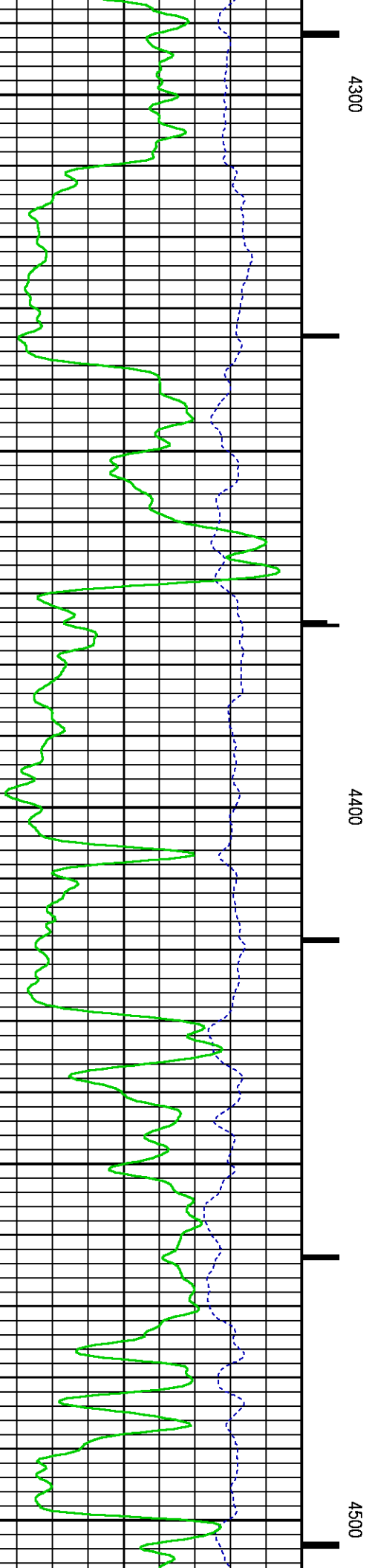
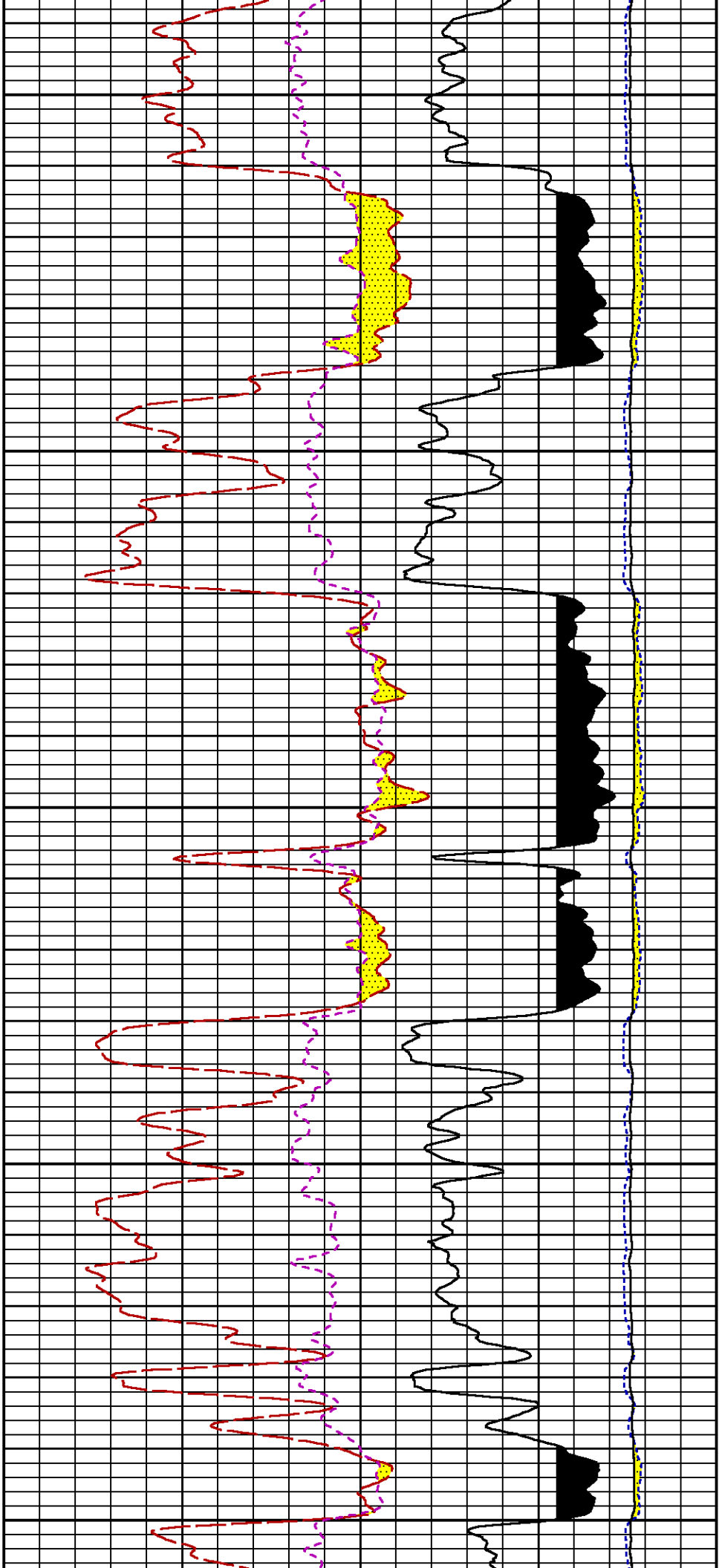


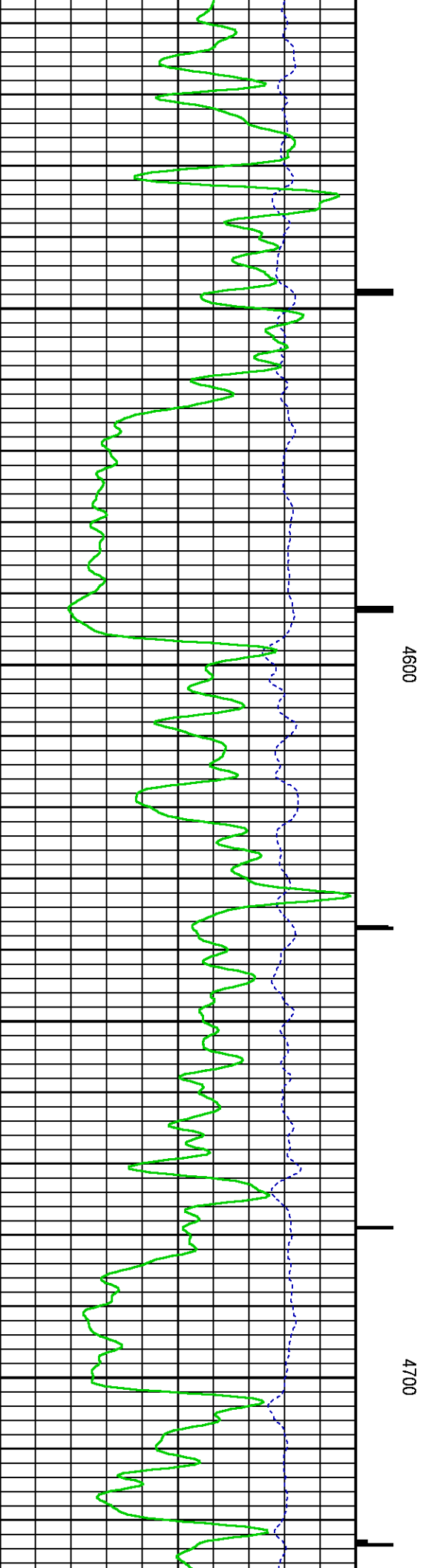
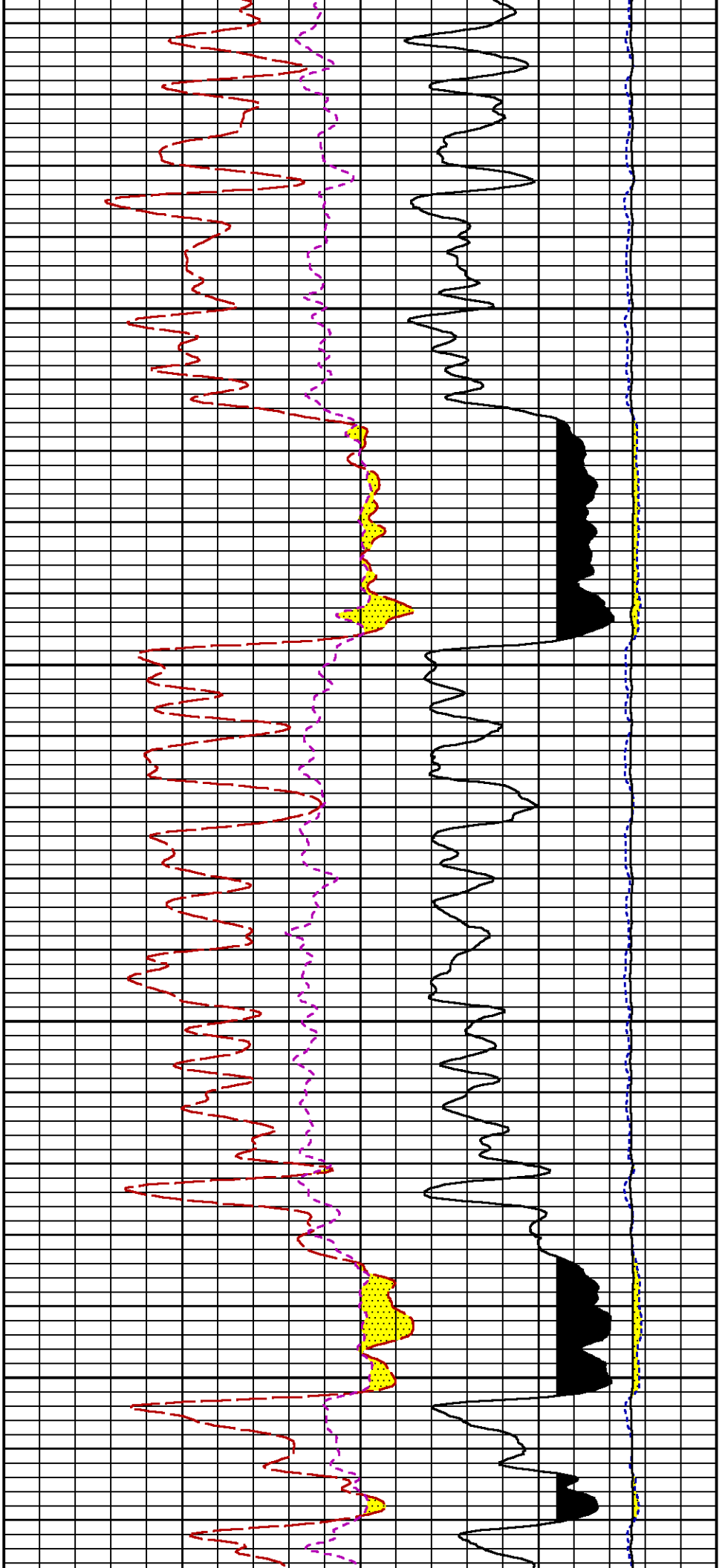
3900

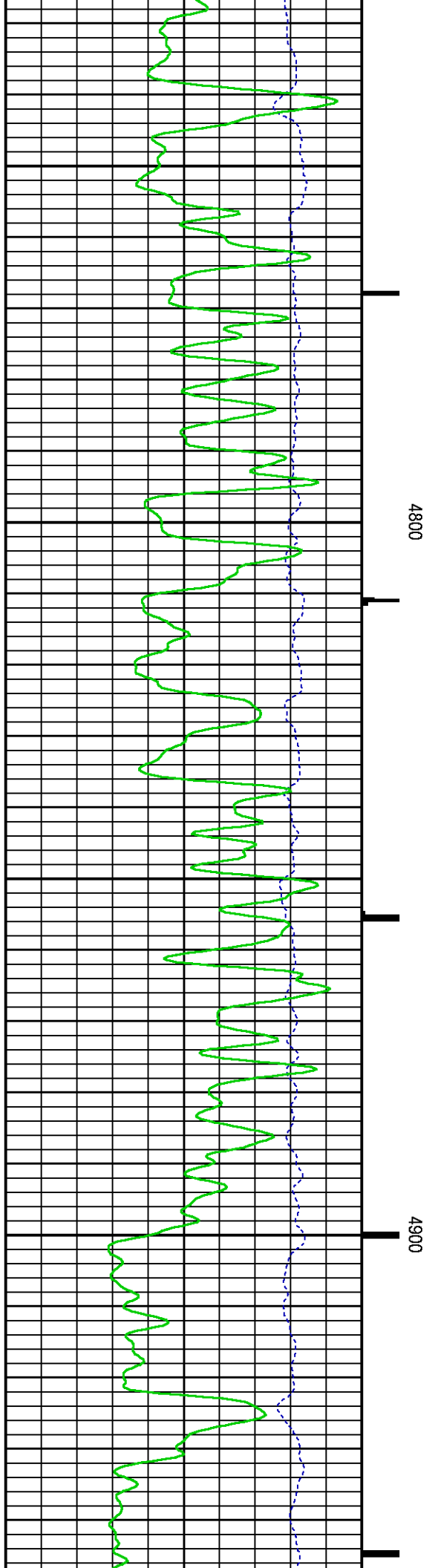
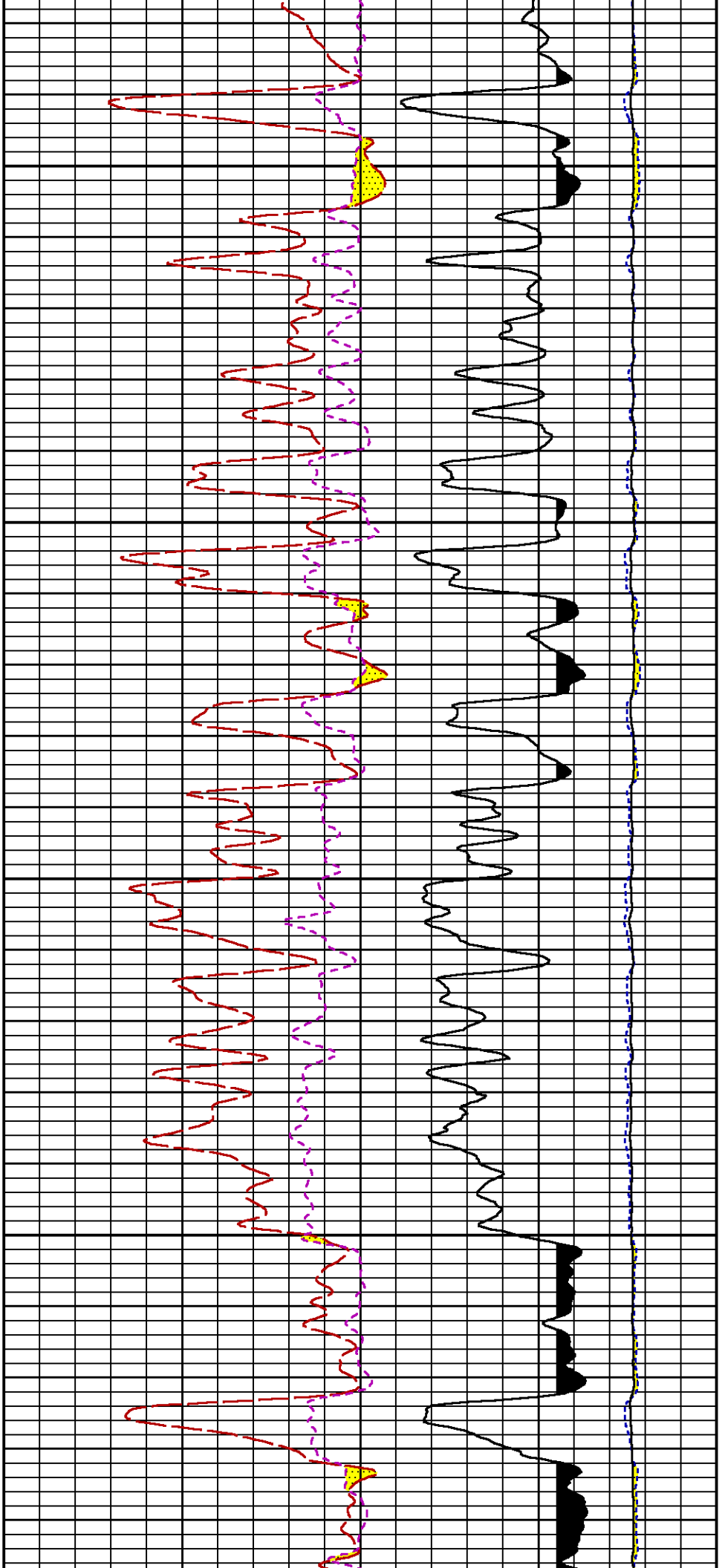
4000



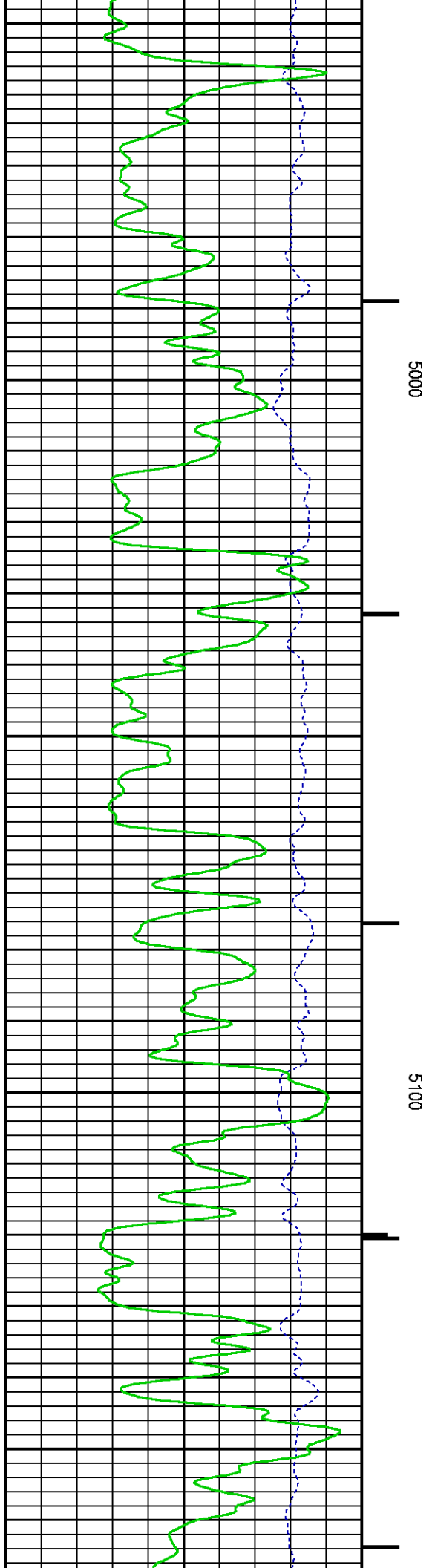
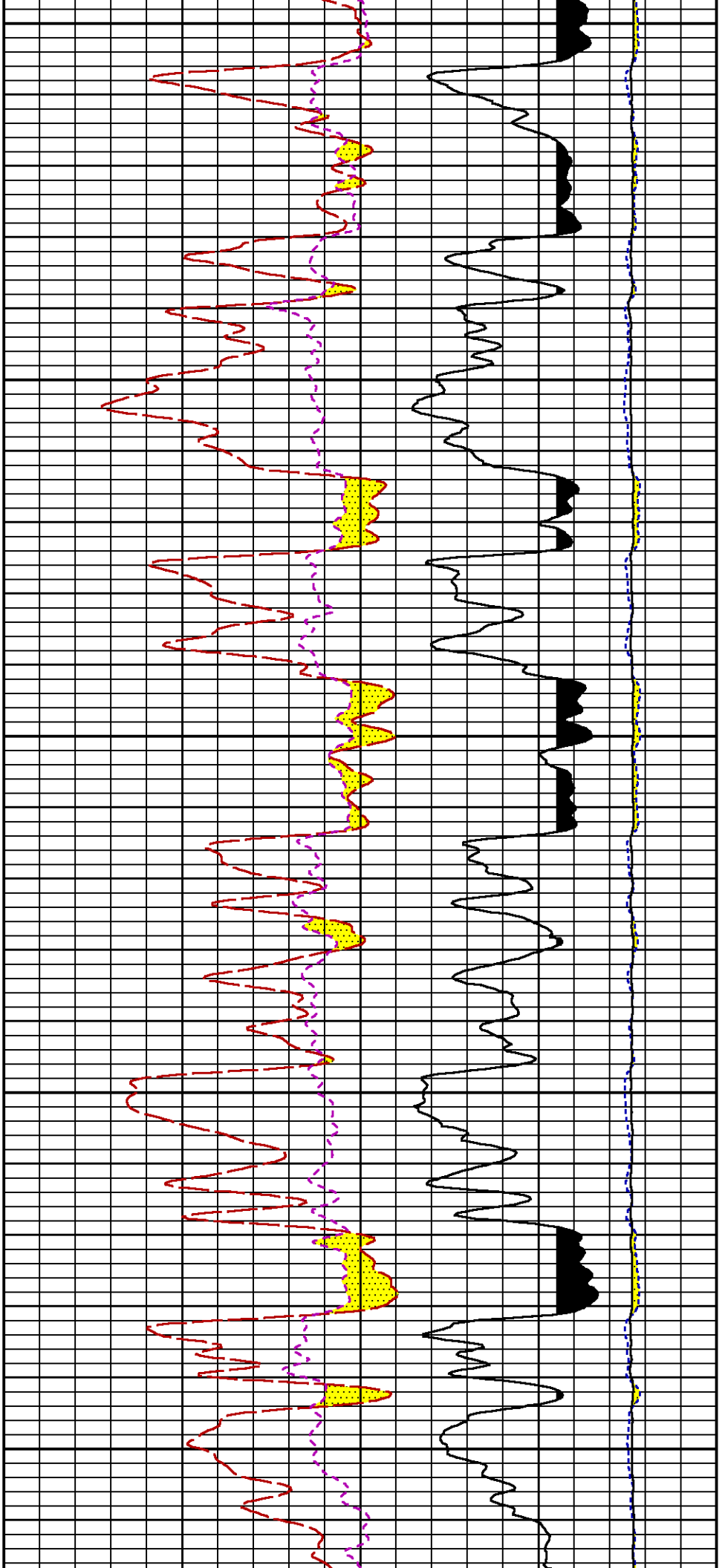


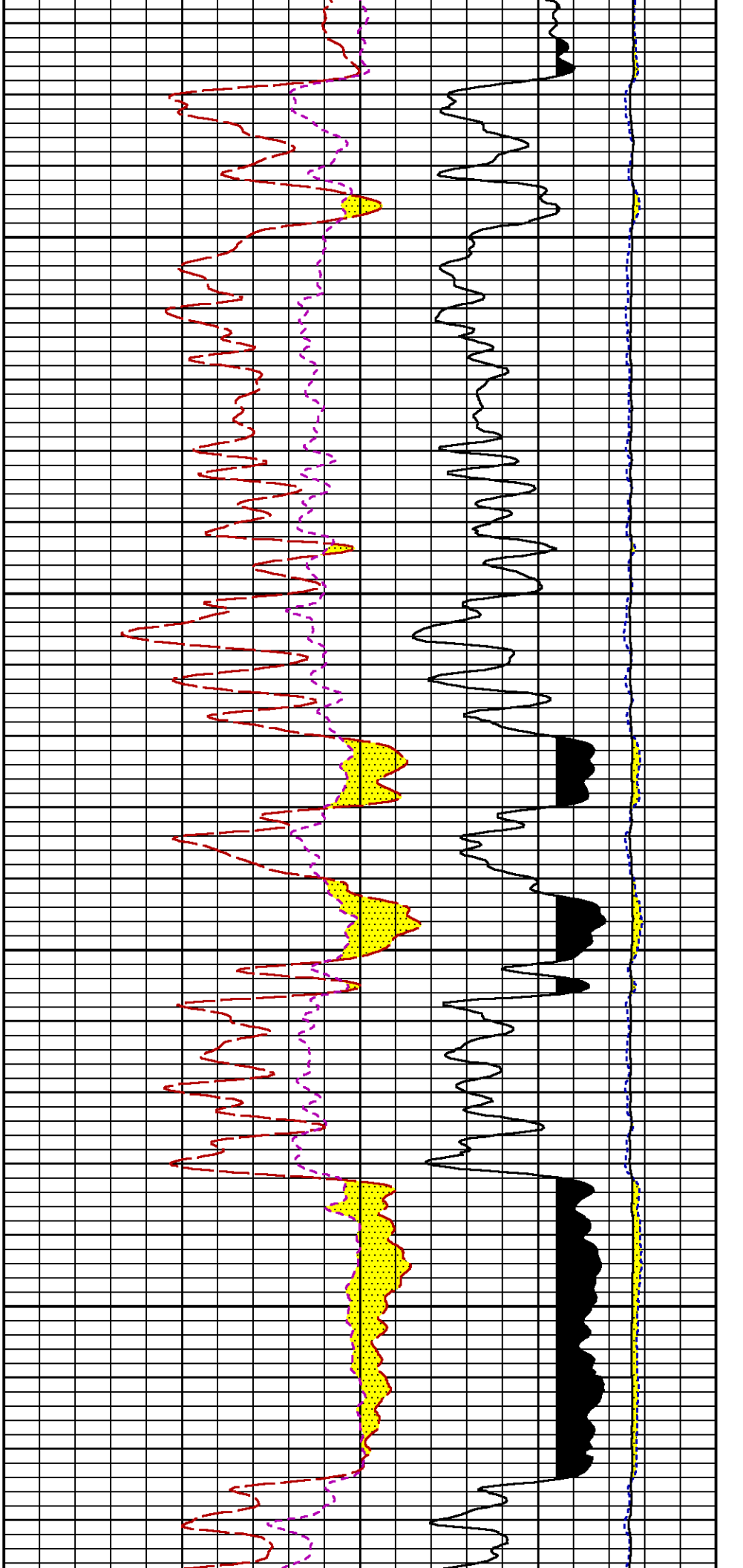






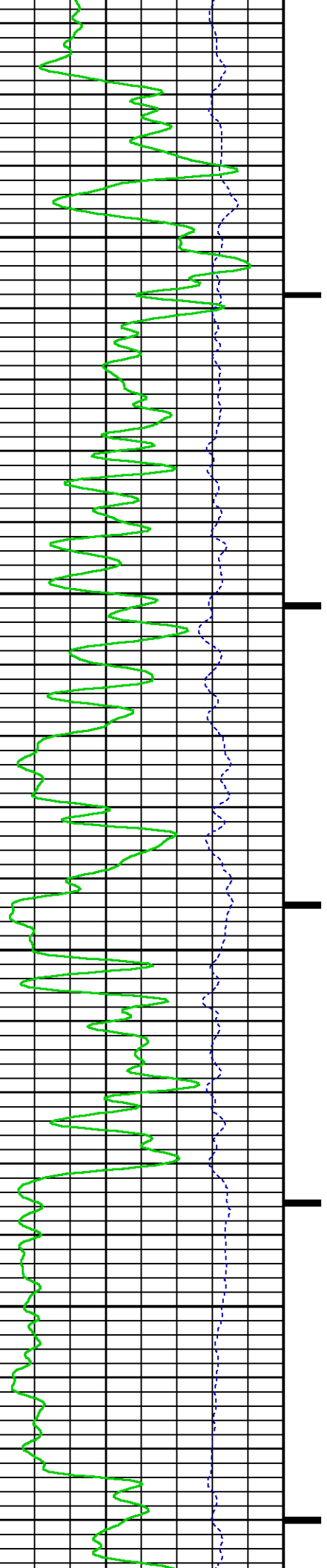


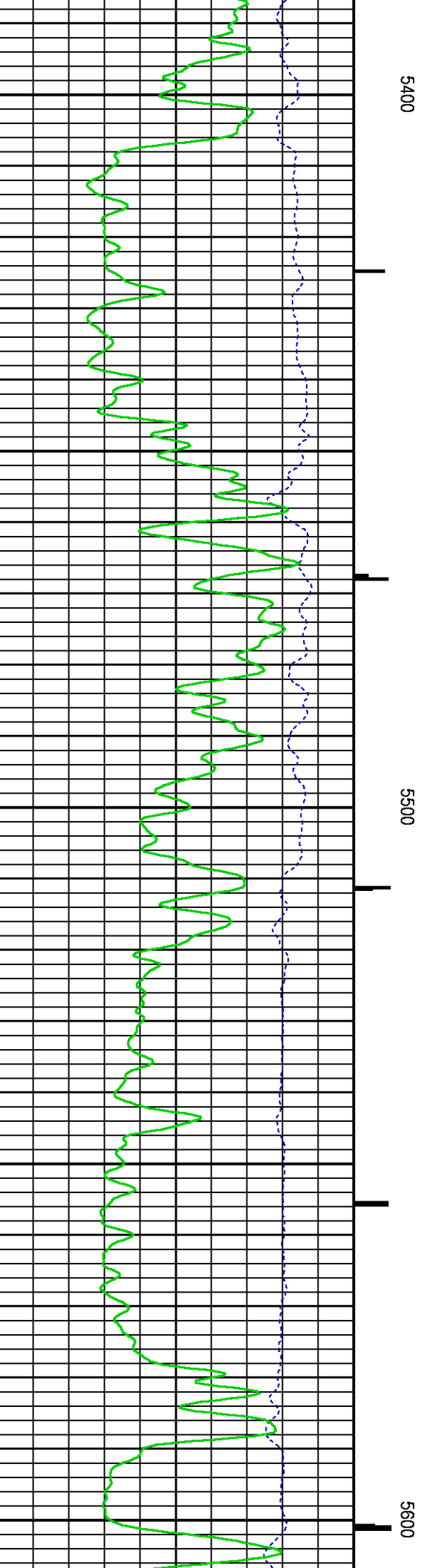
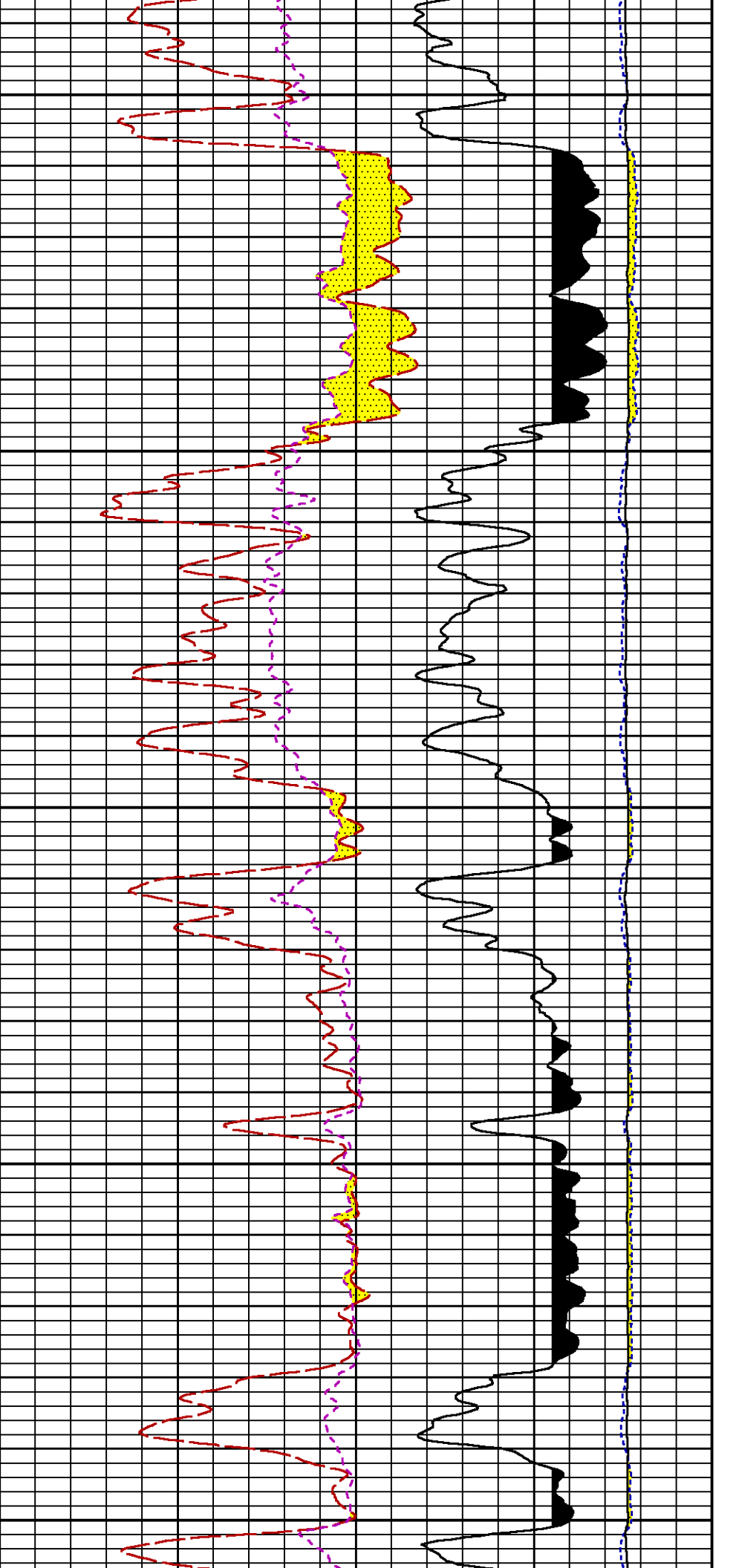


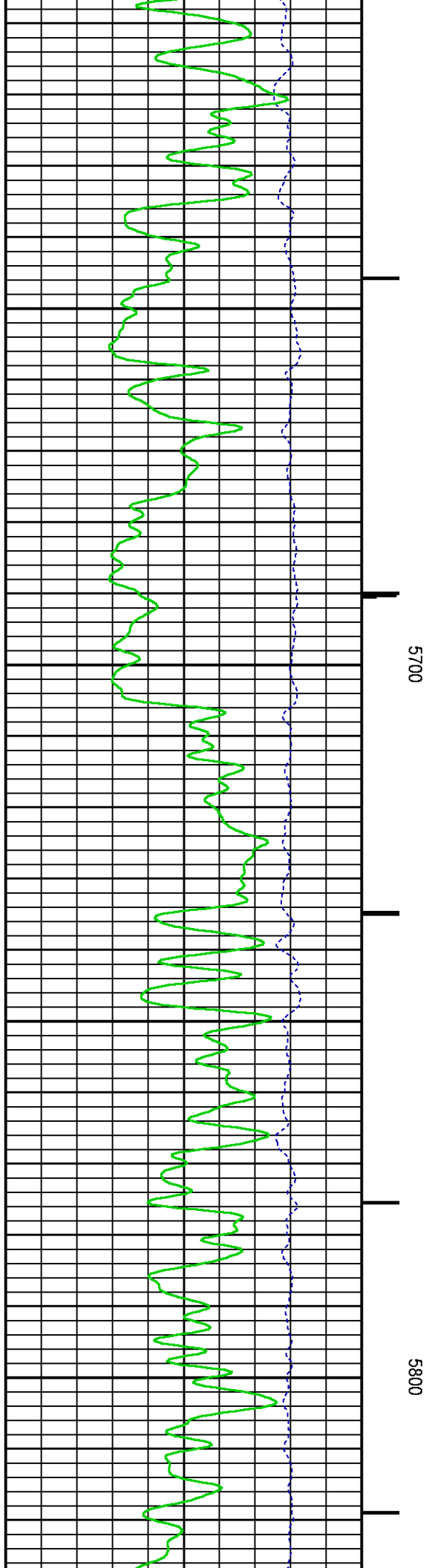
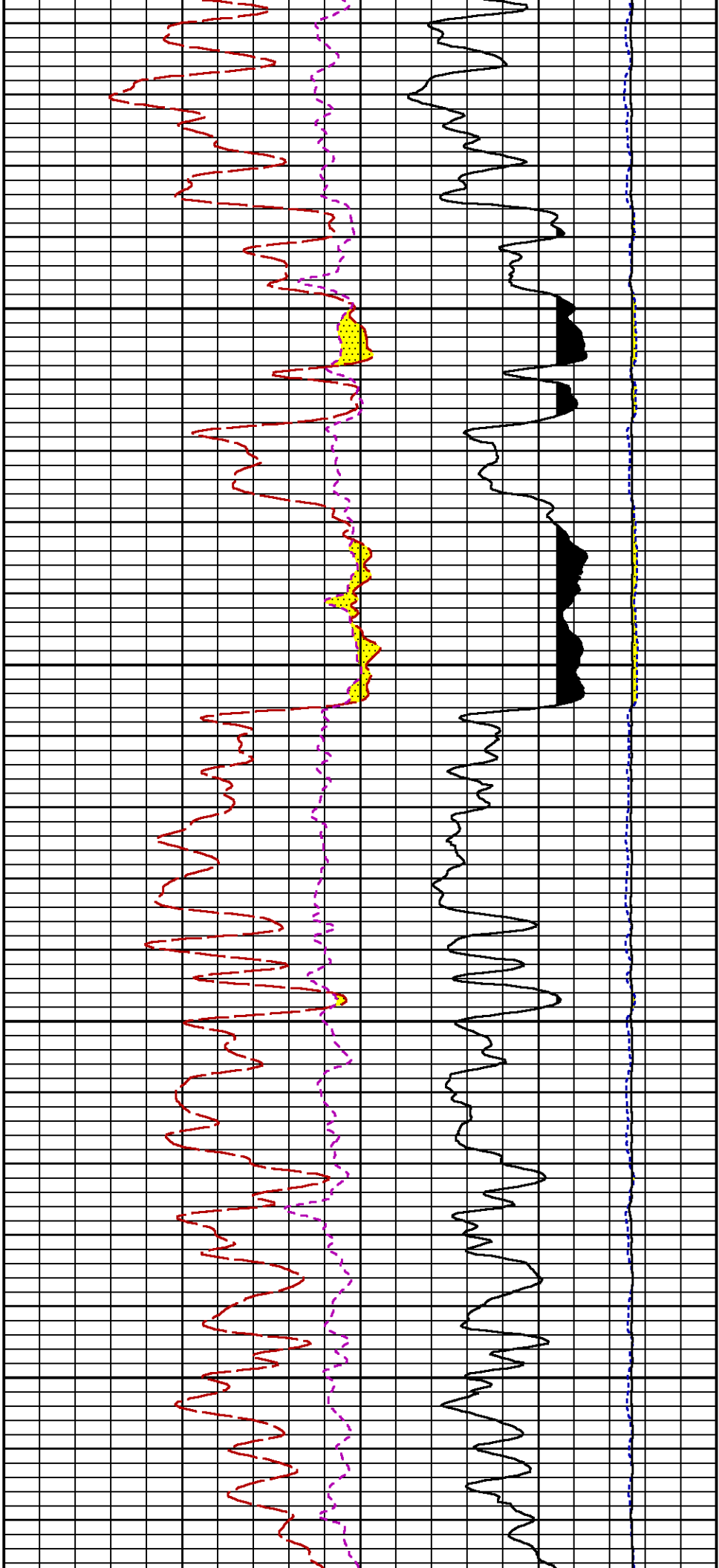


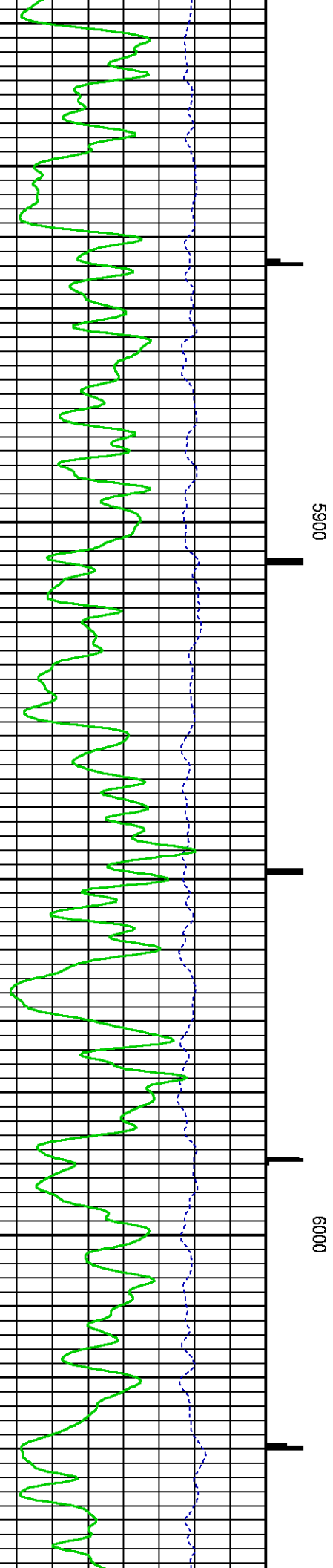
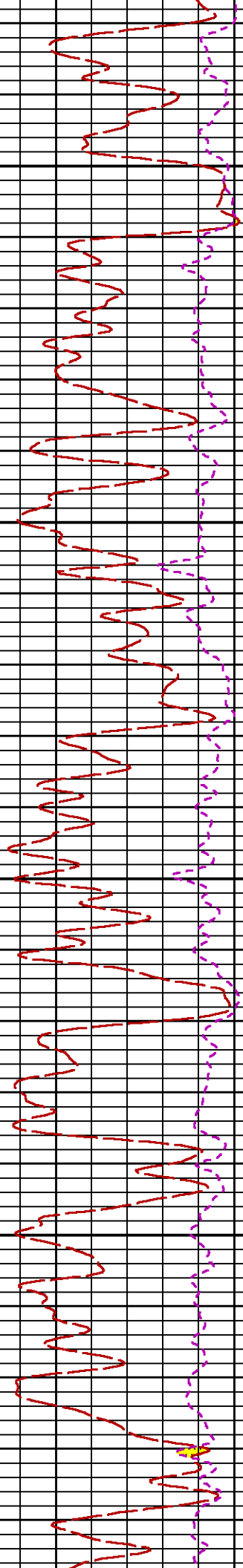
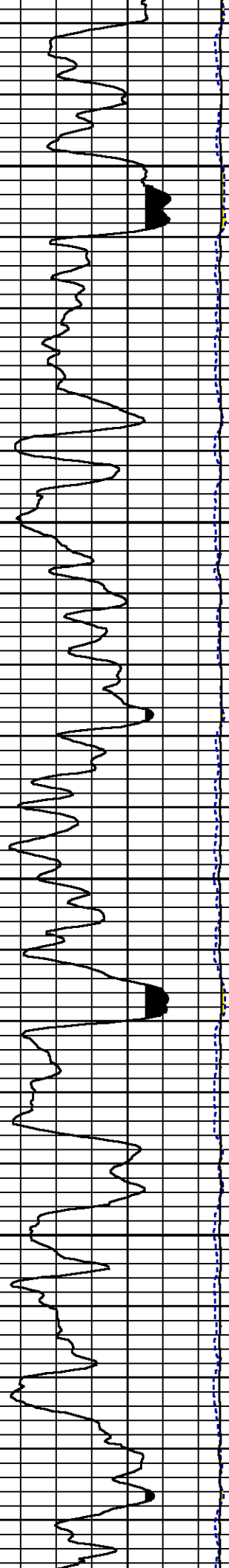
5200

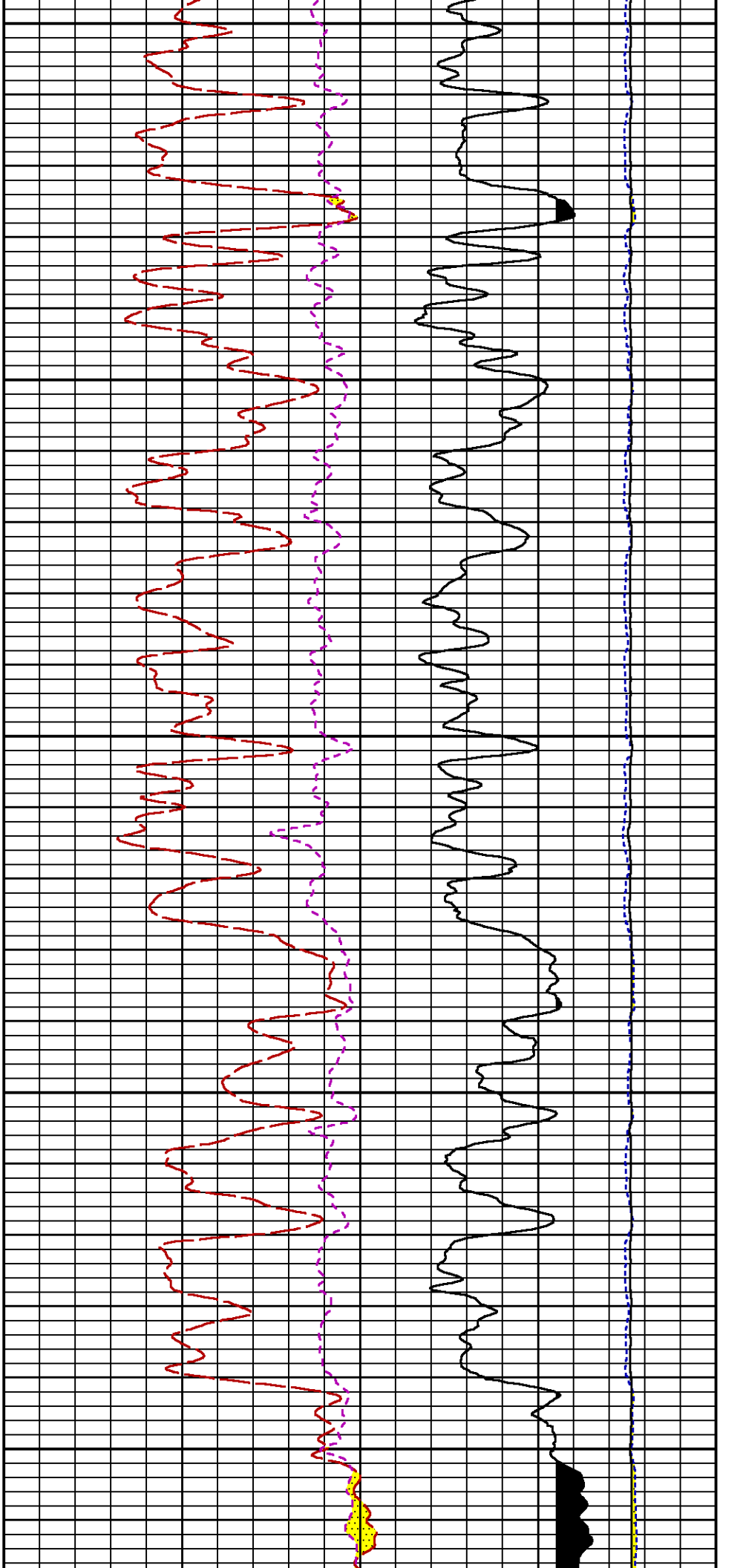
5300





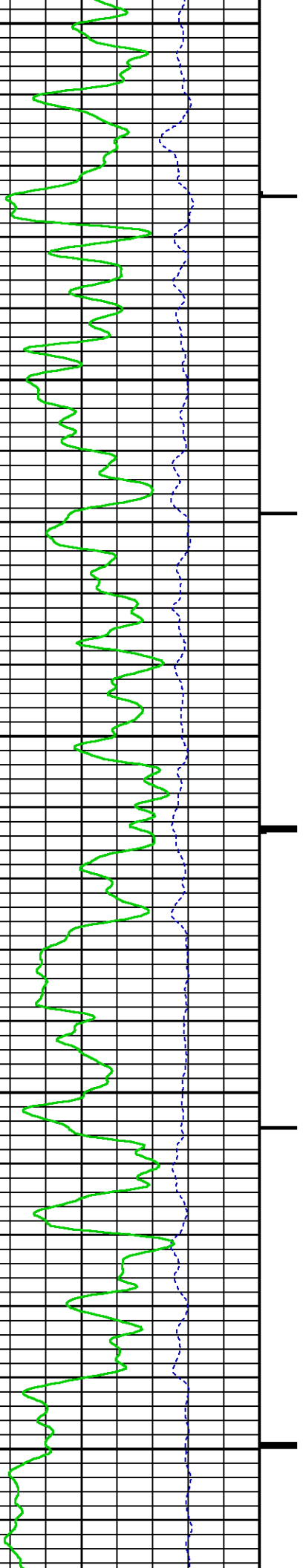


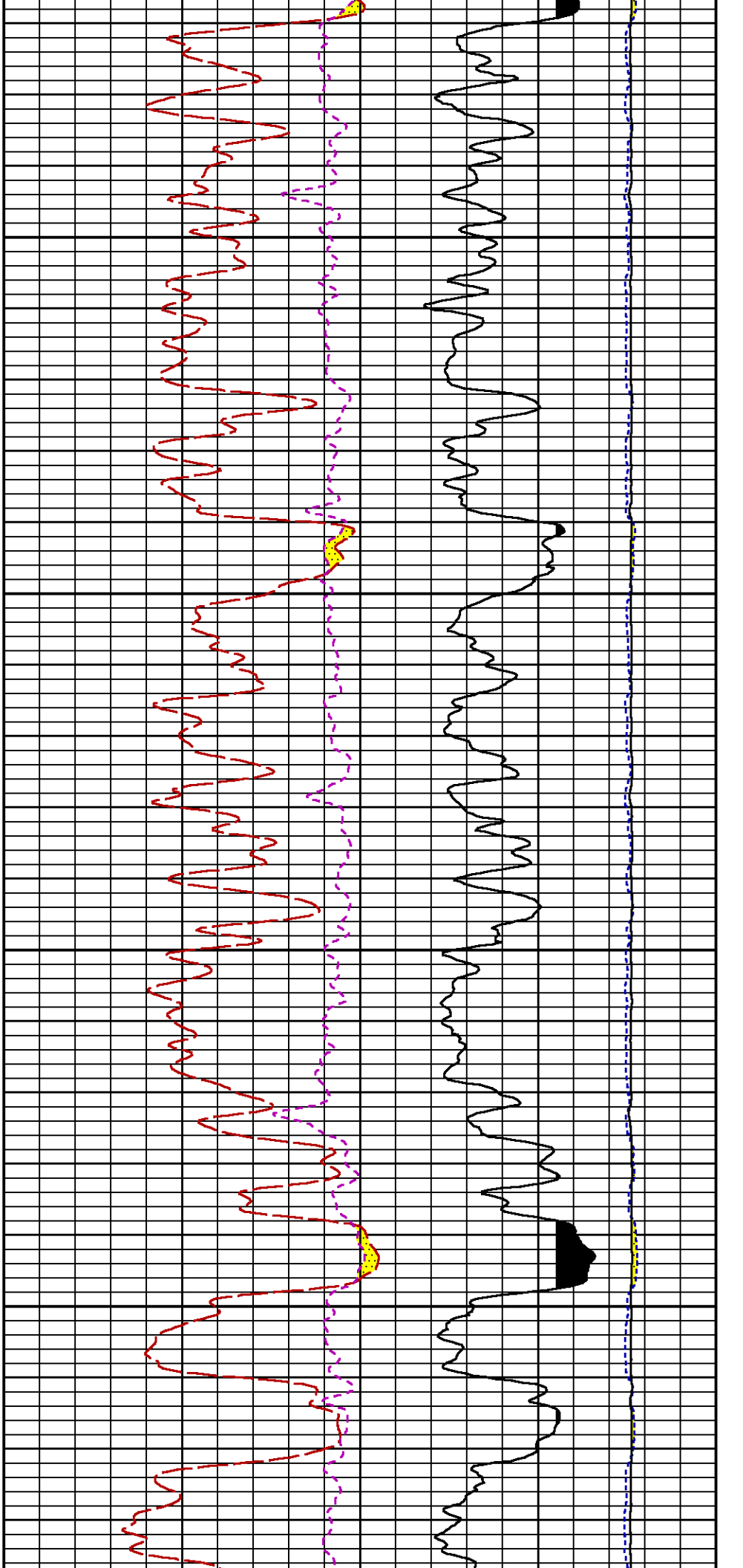




6100

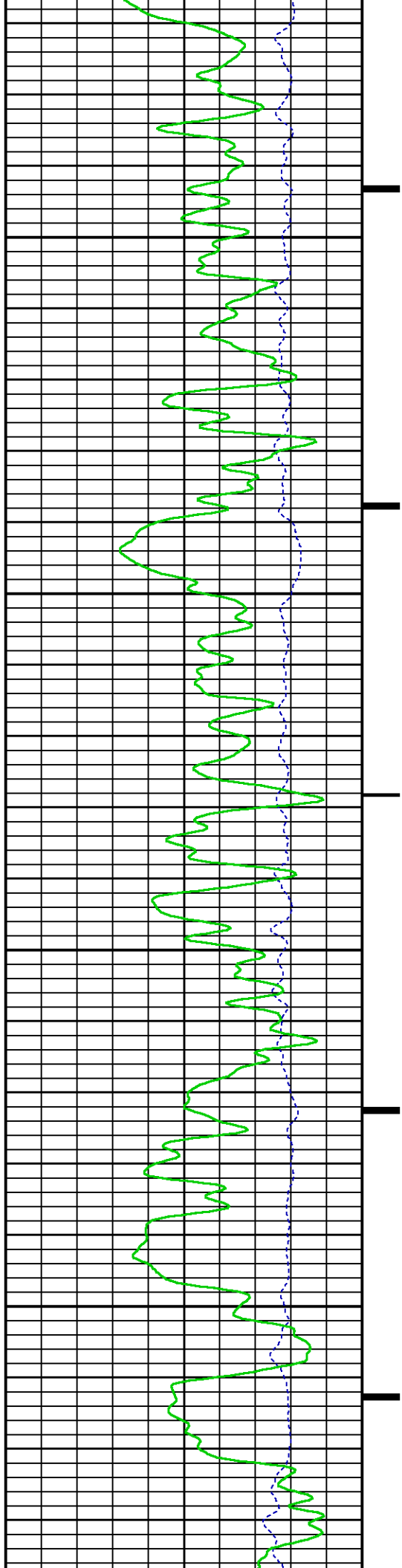
6200

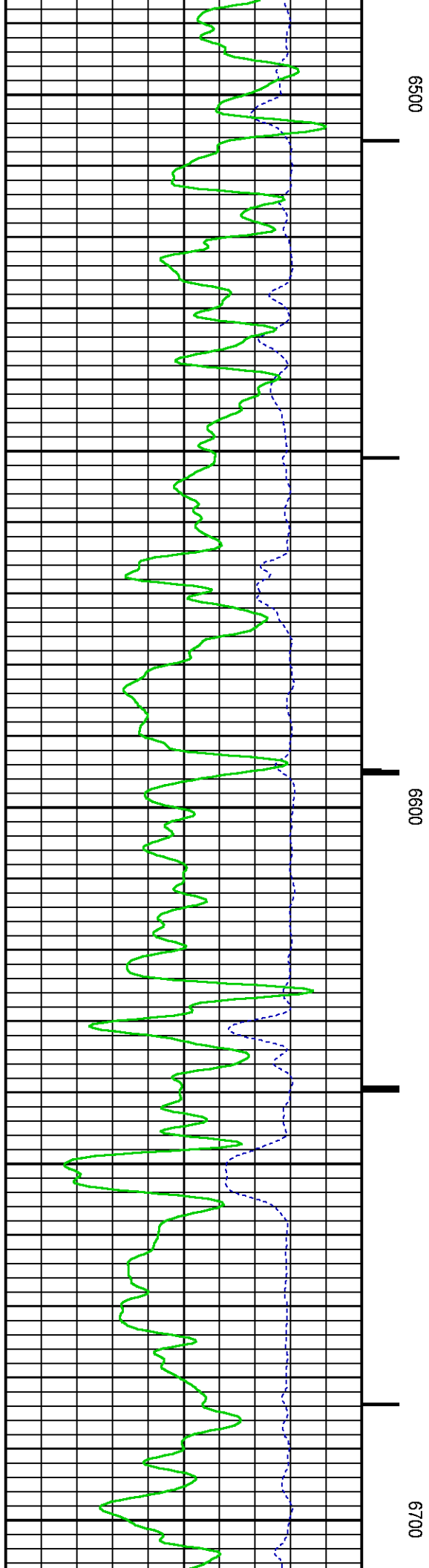
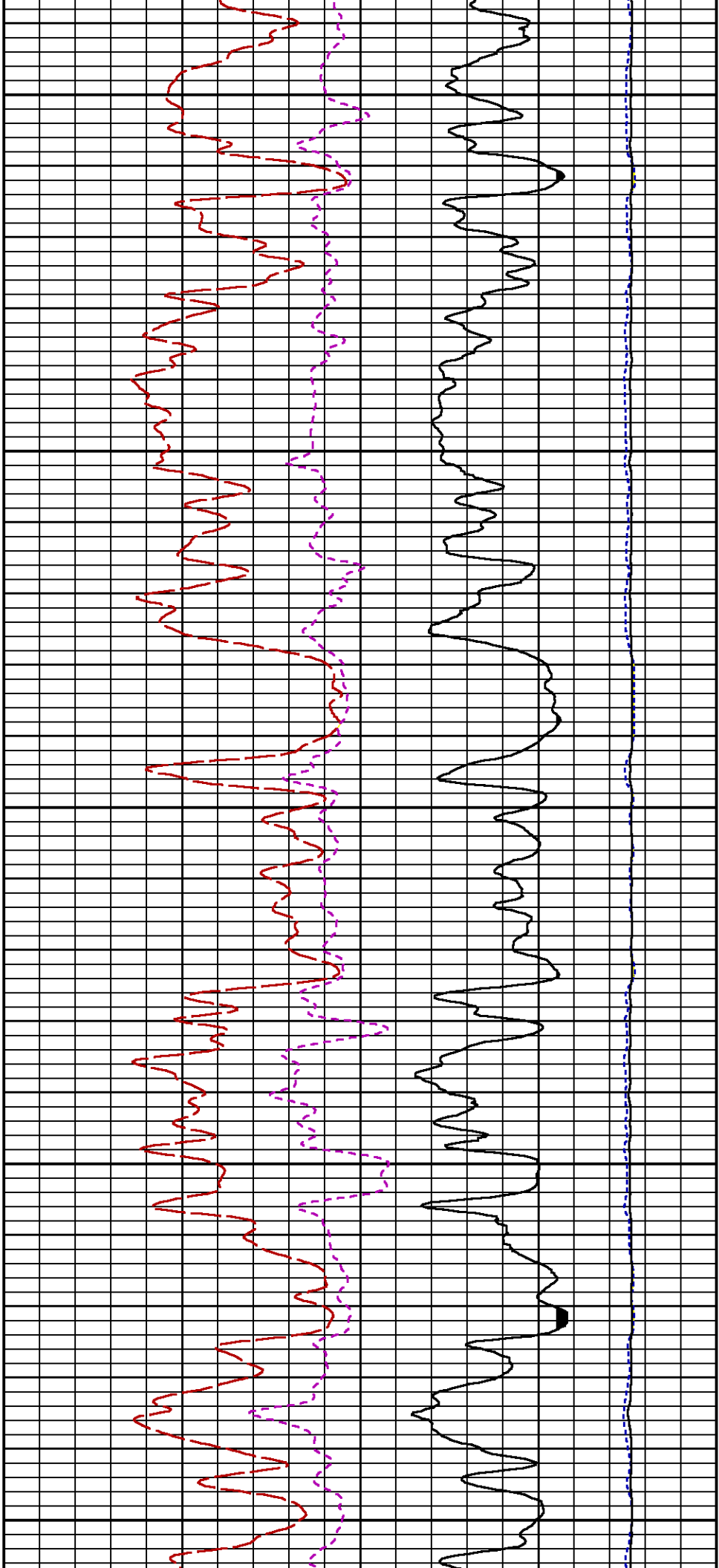




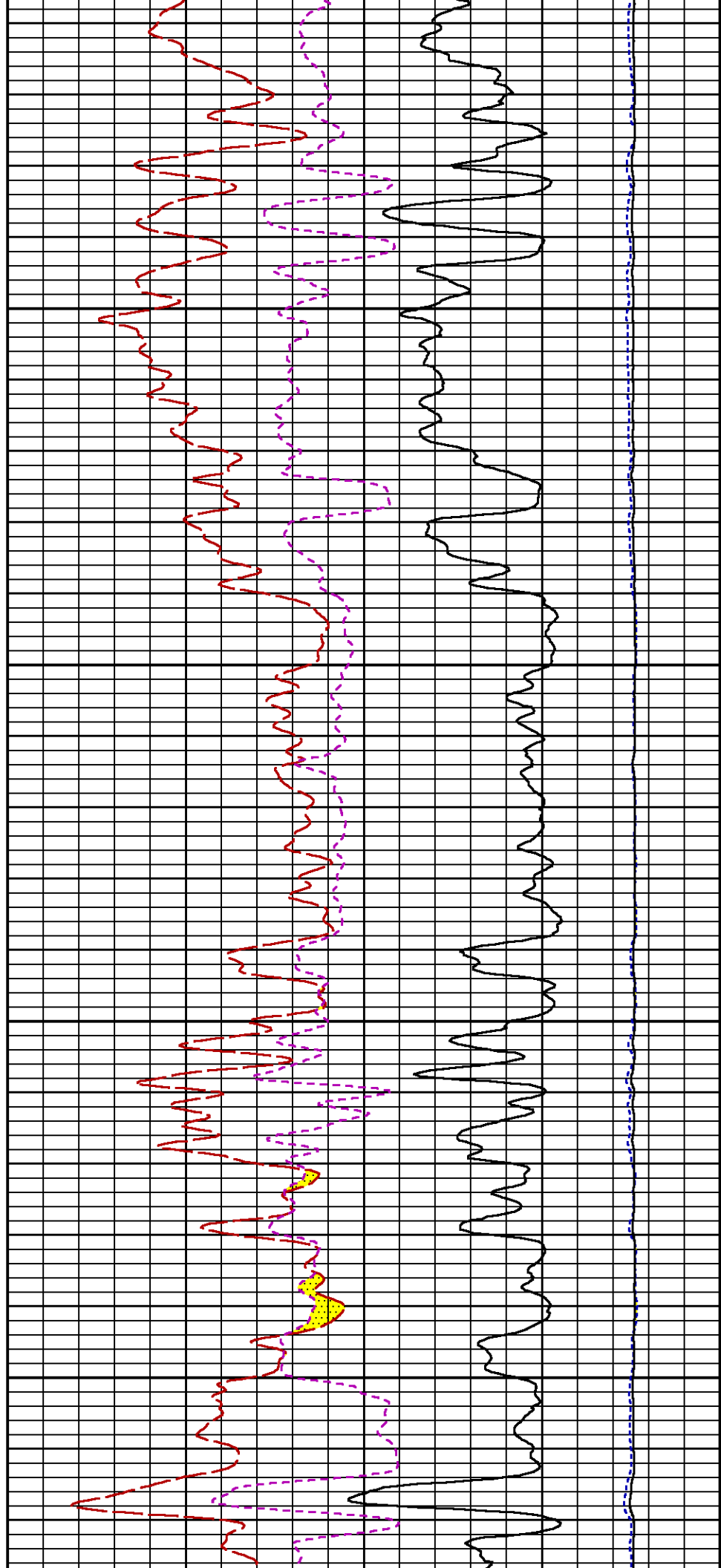
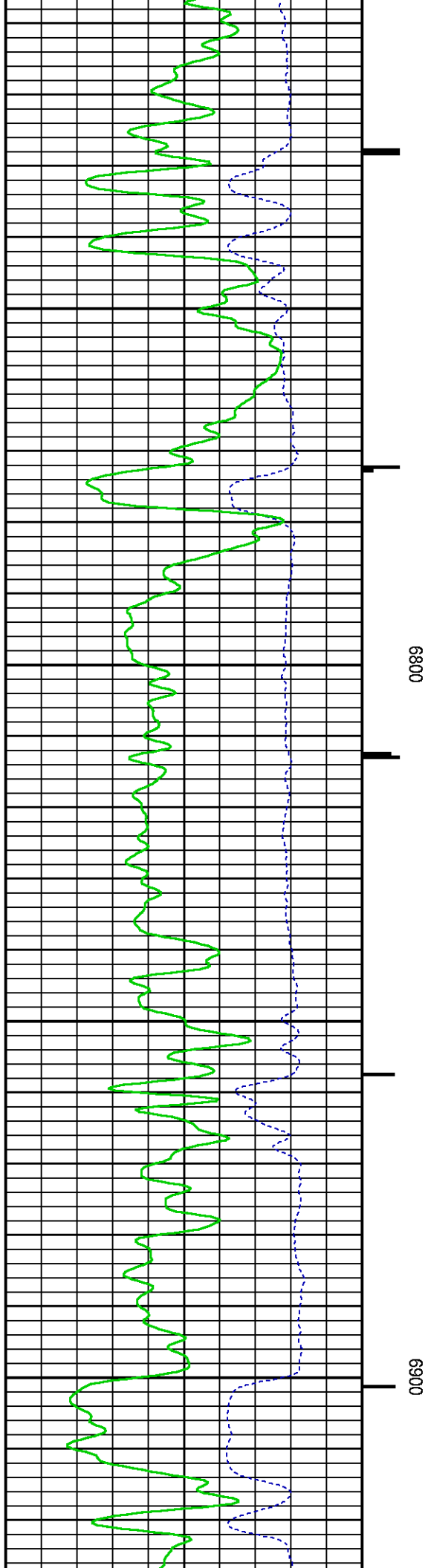
6300

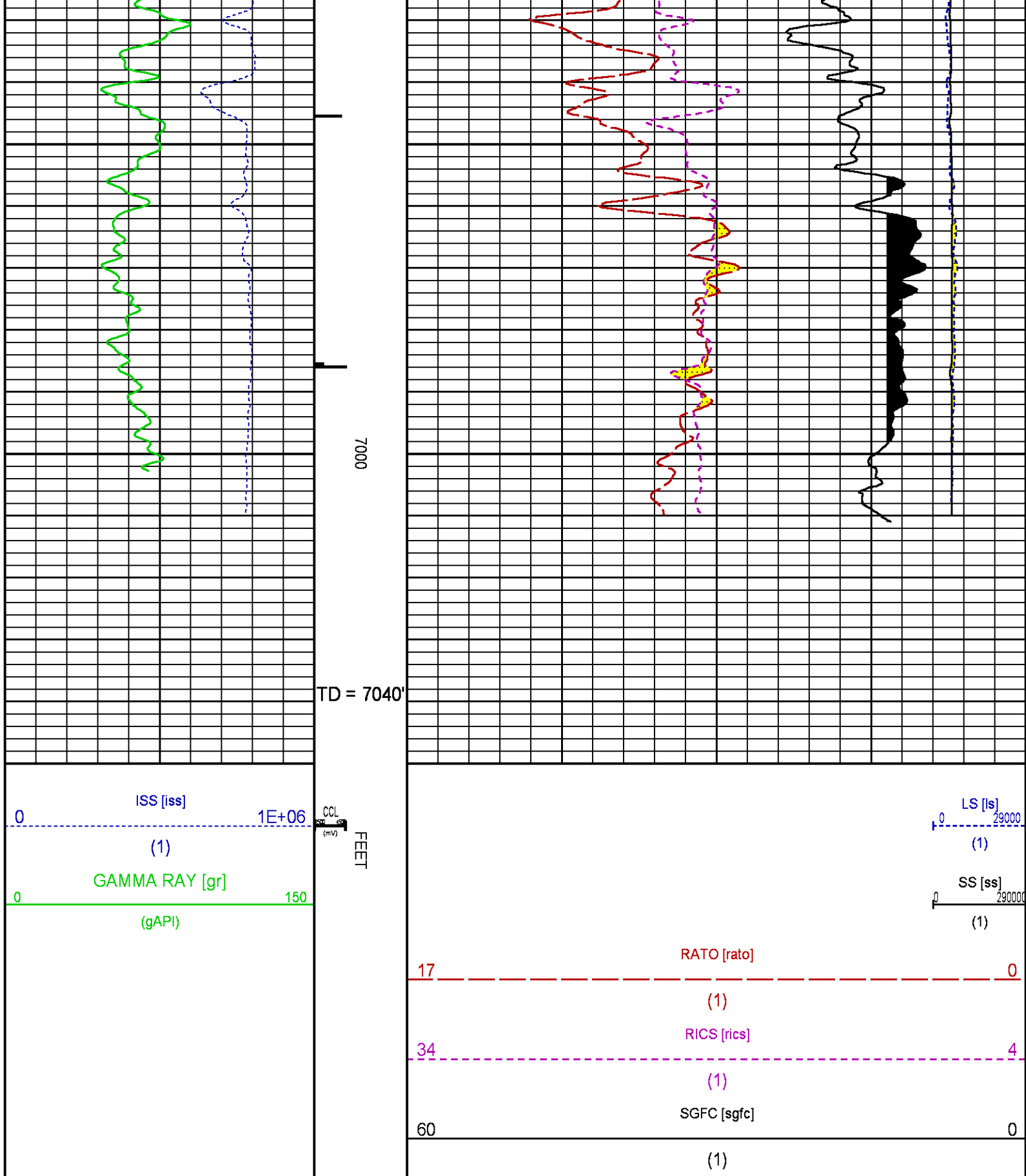
6400











REPEAT SECTION PNC 3-D MODE

Plotted: Sun May 18 10:18:52 2014

PARAMETER AND FILTER SUMMARY REPORT

FILE: /dat1a/CH085717/n353h04.prm  
LOGGING MODE: DEPTH                      DIRECTION: UP  
TOP DEPTH: 6143.250 ft                    BOTTOM DEPTH: 6497.324 ft

SYMMETRIC FILTER

MEASUREMENT TYPE	PARAMETER	VALUE	UNITS	INTERVAL (ft)	
GR	FILTER ( )	medium (1)		TOP	BOTTOM

RPM PROCESSING

MEASUREMENT TYPE	PARAMETER	VALUE	UNITS	INTERVAL (ft)	
PNC Parameters	BOREHOLE CONTENTS	FLUID		TOP	BOTTOM
	OPEN/CASED HOLE	CASED HOLE		"	"
	BOREHOLE SIZE	8.75	in	"	"
	CASING SIZE	4.50	in	"	"
	MATRIX	SANDSTONE		"	"
	CORRECTION BUFFER	11		"	"

CURVE DESCRIPTION REPORT

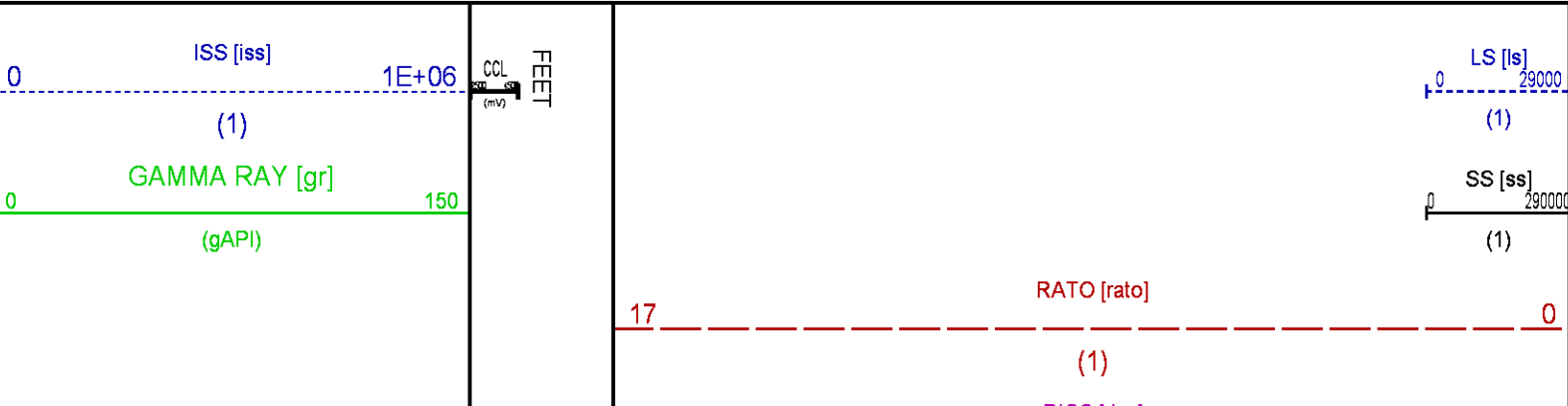
CURVE NAME	CREATION DATE	CURVE DESCRIPTION
F1:CCL	May 14 22:15:06 2014	CASING COLLAR LOCATOR
F1:GR	May 14 22:15:06 2014	GAMMA RAY
F1:ISS	May 14 22:15:06 2014	INELASTIC SHORT SPACE COUNT RATE
F1:LS	May 14 22:15:06 2014	LONG SPACE COUNT RATE
F1:RATO	May 14 22:15:06 2014	SHORT/LONG SPACE COUNT RATE RATIO
F1:RICS	May 14 22:15:06 2014	SHORT SPACE INELASTIC TO CAPTURE COUNT RATE RATIO (ISS/CSS)
F1:SGFC	May 14 22:15:06 2014	CORRECTED FORMATION SIGMA
F1:SS	May 14 22:15:06 2014	SHORT SPACE COUNT RATE

CURVE MEASURE POINT OFFSET

CURVE	OFFSET (ft)	CURVE	OFFSET (ft)	CURVE	OFFSET (ft)	CURVE	OFFSET (ft)
CCL	26.00	ISS	12.75	RATO	12.75	SGFC	12.75
GR	23.00	LS	12.75	RICS	12.75	SS	12.75

Presentation : HL6670:GM 522\_13\_RPM\_REPEAT\_PRESENTATION\_05\_18\_2014.fvpdf [5"/100' Scale]  
Plot Interval : 6150 - 6450 Feet

Data File 1 : F1 : HL6670:/dat1a/CH085717/RPM\_REPEAT.xtf  
Created On : May 14 22:15:06 2014  
Company : WPX ENERGY INC  
Well : C&C ENERGY GM 522-13  
Field : GRAND VALLEY  
File Interval : 19.5 - 7033.5 Feet  
OCT : n353h



(1)

SGFC [sgfc]

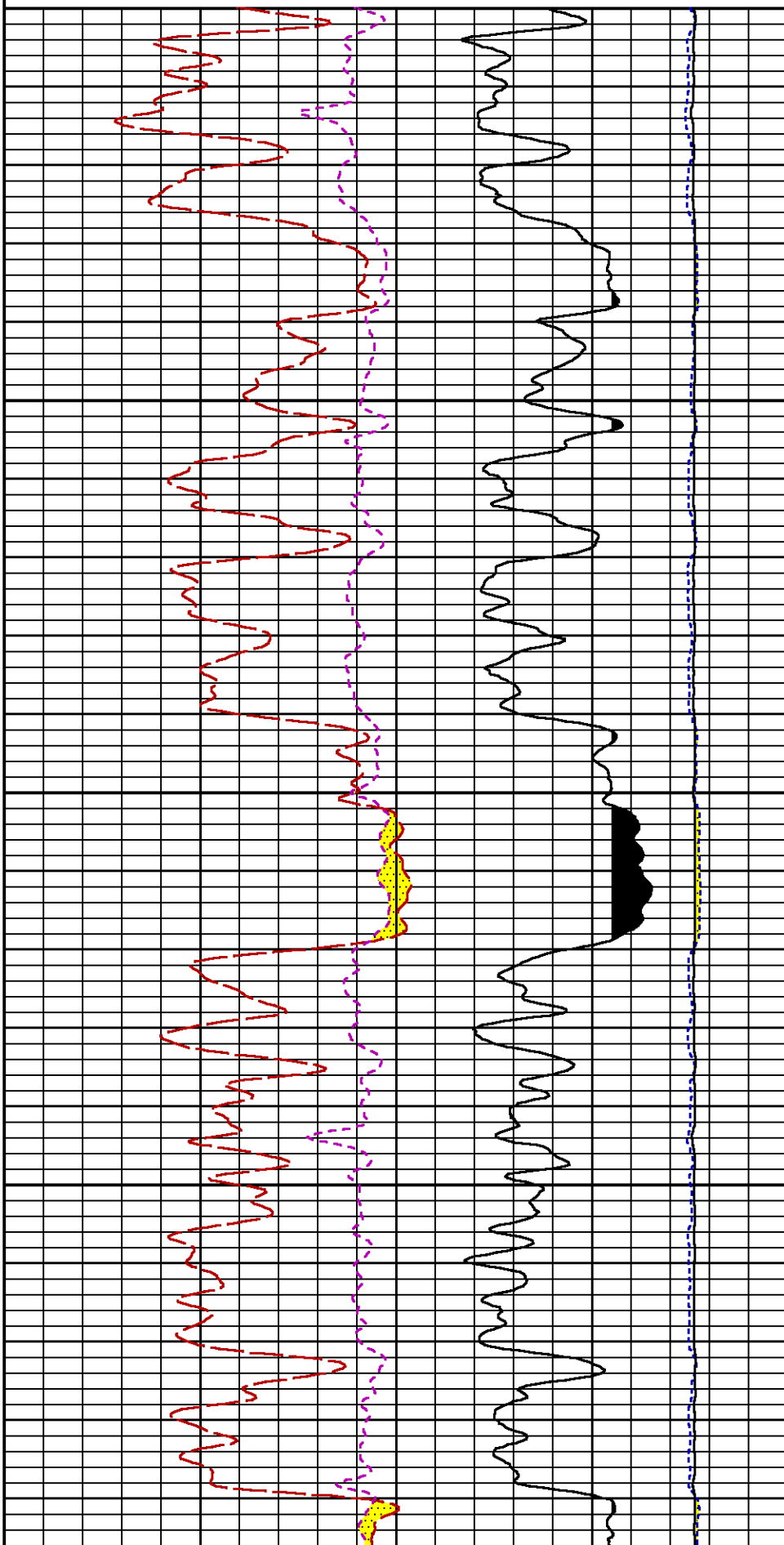
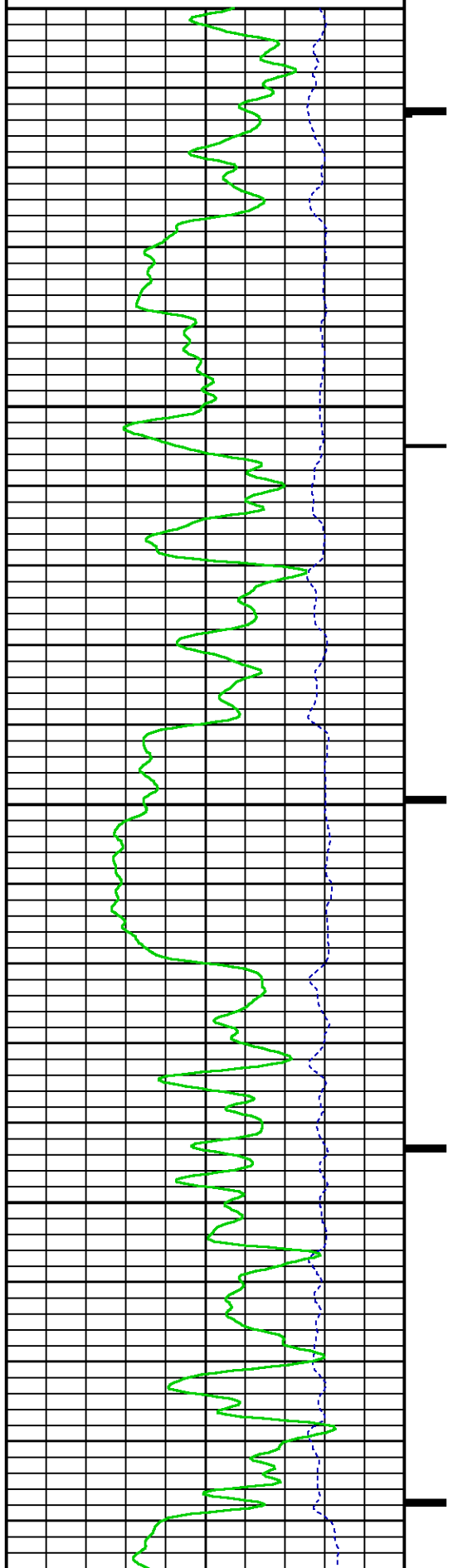
60

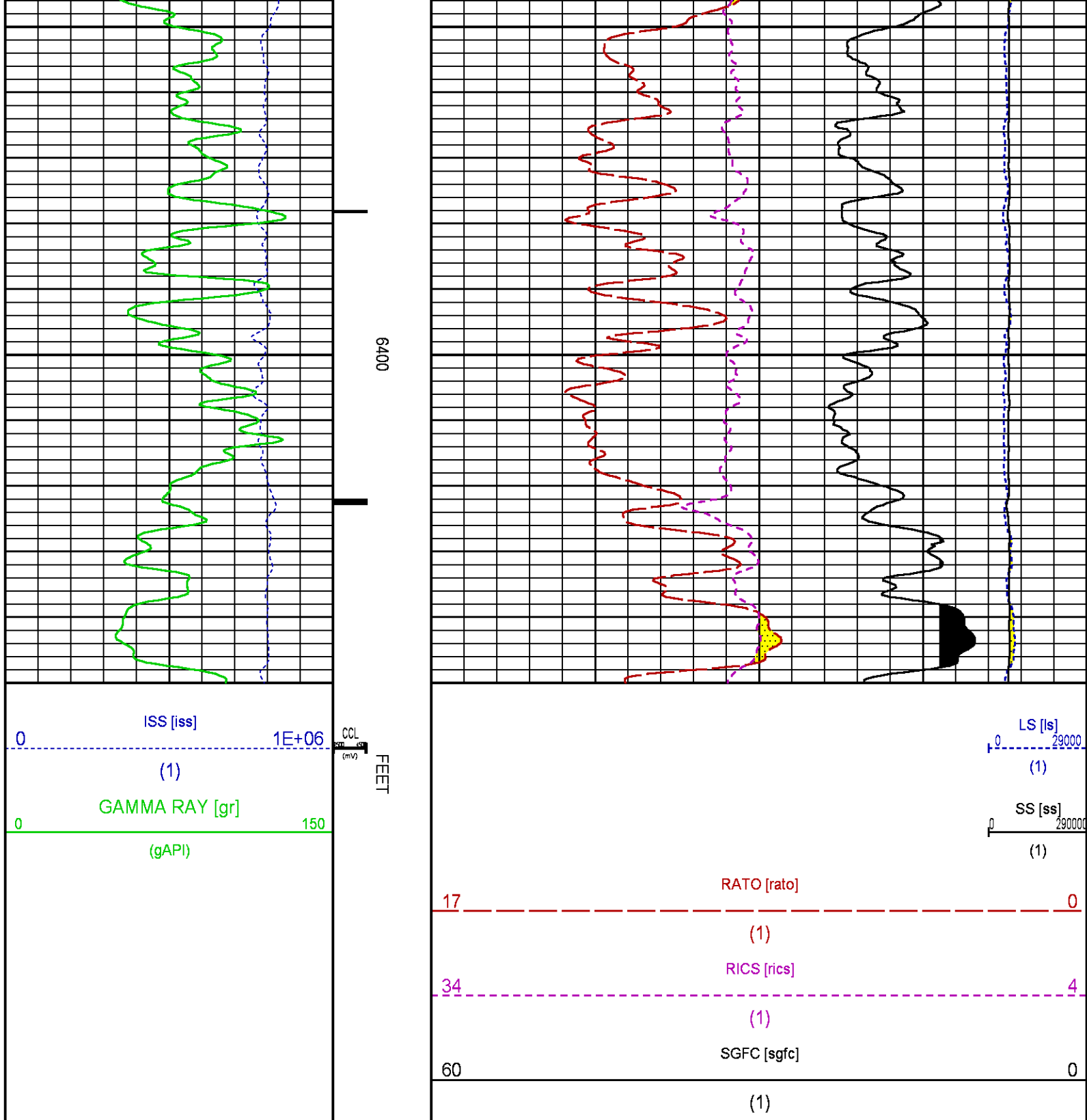
0

(1)

6200

6300





## CALIBRATION / VERIFICATION SUMMARY

Source File: /dat1a/CH085717/RPM.tp1

### GR PRIMARY CALIBRATION SUMMARY

TOOL #: 2812LA 1004393

DATE/TIME PERFORMED: Tue May 6 11:42:16 2014

UNIT #: 3880TA HL6670

CALB JIG #: 4702NK VBA-905

BACKGROUND CALBRTR ON

CR DIFF

MULT

BACKGROUND CALBRTR ON

CALBRTR

	(cts/s)	(cts/s)	(cts/s)		(gAPI)	(gAPI)	(gAPI)
GR	60.02	284.09	224.1	0.937	56.25	266.25	210

## GR PRIMARY VERIFICATION SUMMARY

TOOL #: 2812LA 1004393 DATE/TIME PERFORMED: Tue May 6 11:47:07 2014

UNIT #: 3880TA HL6670 VERI JIG #: 4702NK VBA-905

	BACKGROUND (cts/s)	CALBRTR ON (cts/s)	MULT	BACKGROUND (gAPI)	CALBRTR ON (gAPI)	DIFF. (gAPI)
GR	59.64	282.98	0.937	55.90	265.21	209.31
						200.00 220.00

## RPM\_PNC\_3D PRIMARY CALIBRATION SUMMARY

TOOL: 8283PA 10466231 DATE/TIME PERFORMED: Tue May 13 12:59:39 2014

UNIT: 3880TA HL6670 CALIBRATOR: 2437XB 112674 SOURCE: 8281AA 11724361 HOURS: 8281AA 129

	ISS	Mtr Vits (V)	SS Gain	LS Gain	XLS Gain	EA Temp (degF)	Sync Delay (usec)	RCAL
Raw Data	812300	121	2261	2282	2276	126	7	0.9741
Interpolated	1300000	144	2242	2276	2274			

	ISS	BKS	BKL	BKX	SGA1	SDA1	SGA2	SDA2
Raw Data	812300	7319	1132	152	26.17	0.14	24.21	0.31
					26.36 26.40	0.00 0.20	23.60 24.80	0.00 0.40

	ISS	ILS	IXS	SS	SS2	LS	CSS	CLS
Raw Data	812300	175079	27254	94990	33788	8764	57492	14038
Fit Quality %		1.514	1.530	1.479	1.439	1.666	1.344	1.597

	ISS	RBOR	RIN ISS/ILS	RIN13 ISS/IXS	RICS ISS/CSS	RATO SS/LS	RTWO SS2/LS	RONE CSS/CLS
Raw Data	812300	1.43	4.64	29.82	14.13	10.84	3.86	4.10
		1.42 1.46	3.66 5.62	22.20 32.70	10.99 16.34	10.06 11.10	3.67 3.96	3.76 4.22
Fit Quality %		0.069	0.171	0.157	0.149	0.170	0.180	0.125
Reduced	1393172	1.43	4.66	29.95	14.19	10.86	3.86	4.10
		1.42 1.46	4.39 5.62	27.60 32.70	13.70 16.34	10.06 11.10	3.67 3.96	3.76 4.22

## TPSETEMP PRIMARY CALIBRATION SUMMARY

TOOL #: 8255XA 11774568 DATE/TIME PERFORMED: Wed May 14 12:39:45 2014

UNIT #: 3880TA HL6670

	T(0)	T(1)	T(2)	T(3)
Corr Coeff for Temp	-9.274653E+00	1.055639E-01	2.143764E-06	-2.782846E-10

## INSTRUMENT CONFIGURATION

Source File: /dat1a/CH085717/WPX\_CH-ldg

A3 CABLEHEAD  
Diameter : 1.37"

PCM POWER SUPPLY  
Diameter : 1.70"  
Length : 3.86"  
Weight : 15 lbs  
Series : 8250EA  
Mnemonic : PCM

34.08"

TELEMETRY / CCL  
Diameter : 1.70"  
Length : 4.46"  
Weight : 20 lbs  
Series : 8248ED  
Mnemonic : PCM  
Measure Point: 1.00': CCL MP

CCL MP 26.03°

GAMMA RAY  
Diameter : 1.70"  
Length : 3.02"  
Weight : 15 lbs  
Series : 8262XA  
Mnemonic : GR  
Measure Point: 0.89': GR MP

GR MP 22.90°

RPM ELECTRONICS  
Diameter : 1.70"  
Length : 4.48"  
Weight : 16 lbs  
Series : 8281EA  
Mnemonic : RPM

RPM C DETECTOR SECTION  
Diameter : 1.70"  
Length : 9.40"  
Weight : 41 lbs  
Series : 8283PA  
Mnemonic : RPM  
Measure Point: 5.45': XLS DETECTOR  
Measure Point: 5.04': LS DETECTOR  
Measure Point: 4.79': SS DETECTOR

XLS DETECTOR 13.58°  
LS DETECTOR 13.16°  
SS DETECTOR 12.91°

RPM SOURCE SECTION  
Diameter : 1.70"  
Length : 4.70"  
Weight : 18 lbs  
Series : 8281FA  
Mnemonic : RPM


TEMPERATURE / PRESSURE  
Diameter : 1.70"  
Length : 3.30"  
Weight : 13 lbs  
Series : 8255XA  
Mnemonic : SRPL  
Measure Point: 1.52': TEMP MP

TEMP MP 1.65°  
PRES MP

BULL PLUG 1 11/16

0.00°

TOTAL LENGTH: 34.08'  
TOTAL WEIGHT: 144 lbs  
MAX DIAMETER: 0"1.70"

	COMPANY	WPX ENERGY INC		FILE NO:	
	WELL	C&C ENERGY GM 522-13			CH085717
	FIELD	GRAND VALLEY		API NO:	
	COUNTY	GARFIELD	STATE	CO	05045222660000
LOCATION:		ELEVATIONS:		S 13 T7S R96W	
SHL: 263' FSL 1036' FWL S12 T7S R96W		KB 5165 FT		PAD: GM 24-12	
BHL: 2506' FNL 2010' FWL S13 T7S R96W		DF		RIG: H & P 318	
SEC 13 TWP 7S RGE 96W		GL 5141 FT			
		DATE		14-May-2014	