



FILE NO:
CH085724
API NO:
05045222600000

COMPANY
WELL
FIELD
COUNTY
STATE
CO

WPX ENERGY
C&C ENERGY GM 421-13
GRAND VALLEY
GARFIELD

Ver. 3.87
S13 T7S R96W
PAD: GM 24-12
H&P 318

LOCATION:
SHL: 273' FSL 1039' FWL
BHL: 736' FNL 2206' FWL
SEC 13 TWP 7S RGE 96W

OTHER SERVICES
CBL

PERMANENT DATUM
LOG MEASURED FROM
DRILL MEAS. FROM
GL
KB
KB
ELEVATION
5141 FT
24 FT
ABOVE P.D.

ELEVATIONS:
KB 5165 FT
DF
GL 5141 FT

DATE	RUN	TRIP	15-May-2014	1		
SERVICE ORDER			US085724			
DEPTH DRILLER			6282 FT			
DEPTH LOGGER			6252 FT			
BOTTOM LOGGED INTERVAL			6242 FT			
TOP LOGGED INTERVAL			3053 FT			
TIME STARTED			0300			
TIME FINISHED			0830			
OPERATOR RIG TIME			5.5 HR			
TYPE OF FLUID IN HOLE			WATER			
FLUID DENSITY			NA			
FLUID SALINITY			NA			
FLUID LEVEL			NA			
LOGGED CEMENT TOP			NA			
WELLHEAD PRESSURE			0 PSI			
MAXIMUM HOLE DEVIATION			NA			
NOMINAL LOGGING SPEED			15 FMIN			
MAX. RECORDED TEMP.			202 DEGF			
REFERENCE LOG			BAKER HUGHES CBL LOG			
REFERENCE LOG DATE			15-MAY-2014			
EQUIP. NO.			6670			
LOCATION			GRAND JCT			
RECORDED BY			D SMITH/T NEWELL			
WITNESSED BY			JEFF BRADY			

IN MAKING INTERPRETATIONS OF LOGS OUR EMPLOYEES WILL GIVE THE CUSTOMER THE BENEFIT OF THEIR BEST JUDGEMENT. BUT SINCE ALL INTERPRETATIONS ARE OPINIONS BASED ON INFERENCES FROM ELECTRICAL OR OTHER MEASUREMENTS, WE CANNOT, AND WE DO NOT GUARANTEE THE ACCURACY OR CORRECTNESS OF ANY INTERPRETATION. WE SHALL NOT BE LIABLE OR RESPONSIBLE FOR ANY LOSS, COST, DAMAGES, OR EXPENSES WHATSOEVER INCURRED OR SUSTAINED BY THE CUSTOMER RESULTING FROM ANY INTERPRETATION MADE BY ANY OF OUR EMPLOYEES.

BOREHOLE RECORD

BIT SIZE	FROM	TO
13.5 IN	0 FT	1701 FT
8.75 IN	1701 FT	6325 FT

CASING RECORD

SIZE	WEIGHT	GRADE	FROM	TO
9.625 IN	32.2 LB/F		0 FT	1701 FT
4.5 IN	11.6 LB/F	I-80	0 FT	6325 FT

REMARKS

RUN 1 TRIP 1: ALL DATA ON THIS LOG IS SHIFTED AND DEPTH MATCHED USING THE GAMMA RAY CURVE TO THE BAKER HUGHES BOND LOG 5/14/2014 AT THE CLIENT'S REQUEST

THE DEPTH MATCHING PROCESS CREATES POTENTIAL FOR COLLAR LENGTHS TO VARY FROM THOSE RECORDED ON OTHER CASED HOLE WIRELINE UNITS WITHOUT A GAMMA RAY REFERENCE

AMOUNT OF LINEAR SHIFT IS 4 FEET

LOGGED IN PNC-3D MODE

BHT = 202 DEGF

S.I = 2870'

THANK YOU FOR USING BAKER HUGHES WIRELINE SERVICES

CREW: SMITH/NEWELL/BAUGHMAN/COATE

EQUIPMENT DATA

RUN	TRIP	TOOL	SERIES NO.	SERIAL NO.	POSITION
1	1	PCM PWR SUP	8250EA	10408796	FREE
1	1	TELE/CCL	8248ED	10590814	FREE
1	1	GAMMA RAY	8262XA	10317216	FREE
1	1	RPM ELEC	8281EA	10294757	FREE
1	1	RPM	8283PA	10466231	FREE
1	1	RPM FA	8281FA	10307727	FREE
1	1	TEMP	8255XA	11774568	FREE

MAIN SECTION PNC 3-D MODE

ECLIPS 6.2i ECLIPS General Release Rel 6.2i Wed Jun 12 12:21:40 CDT 2013

Updates: 1

Plotted: Sun May 18 08:46:38 2014

PARAMETER AND FILTER SUMMARY REPORT

FILE: /dat1a/CH085724/n353h02.prm
 LOGGING MODE: DEPTH DIRECTION: UP
 TOP DEPTH: 3009.500 ft BOTTOM DEPTH: 6256.500 ft

SYMMETRIC FILTER

MEASUREMENT TYPE	PARAMETER	VALUE	UNITS	INTERVAL (ft)	
GR	FILTER Q	medium (1)		TOP	BOTTOM

RPM PROCESSING

MEASUREMENT TYPE	PARAMETER	VALUE	UNITS	INTERVAL (ft)	
PNC Parameters	BOREHOLE CONTENTS	FLUID		TOP	BOTTOM
	OPEN/CASED HOLE	CASED HOLE		"	"
	BOREHOLE SIZE	8.75	in	"	"
	CASING SIZE	4.50	in	"	"
	MATRIX	SANDSTONE		"	"
	CORRECTION BUFFER	11		"	"

CURVE DESCRIPTION REPORT

CURVE NAME	CREATION DATE	CURVE DESCRIPTION
F1:CCL	May 15 19:04:36 2014	CASING COLLAR LOCATOR
F1:GR	May 15 19:04:36 2014	GAMMA RAY
F1:ISS	May 15 19:04:36 2014	INELASTIC SHORT SPACE COUNT RATE
F1:LS	May 15 19:04:37 2014	LONG SPACE COUNT RATE
F1:RATO	May 15 19:04:37 2014	SHORT/LONG SPACE COUNT RATE RATIO
F1:RICS	May 15 19:04:37 2014	SHORT SPACE INELASTIC TO CAPTURE COUNT RATE RATIO (ISS/CSS)
F1:SGFC	May 15 19:04:38 2014	CORRECTED FORMATION SIGMA
F1:SS	May 15 19:04:38 2014	SHORT SPACE COUNT RATE

CURVE MEASURE POINT OFFSET

CURVE	OFFSET (ft)	CURVE	OFFSET (ft)	CURVE	OFFSET (ft)	CURVE	OFFSET (ft)
CCL	26.00	ISS	12.75	RATO	12.75	SGFC	12.75

GR	23.00	LS	12.75	RICS	12.75	SS	12.75
----	-------	----	-------	------	-------	----	-------

Presentation
: HL6670:RPM_MAIN_FINAL_PRESENTATION_05_18_2014.fvpdf [5"/100' Scale]

Plot Interval
: 3050 - 6266 Feet

Data File 1
: F1 : HL6670:/dat1a/CH085724/MAIN_RPM.xdf

Created On
: May 15 19:04:36 2014

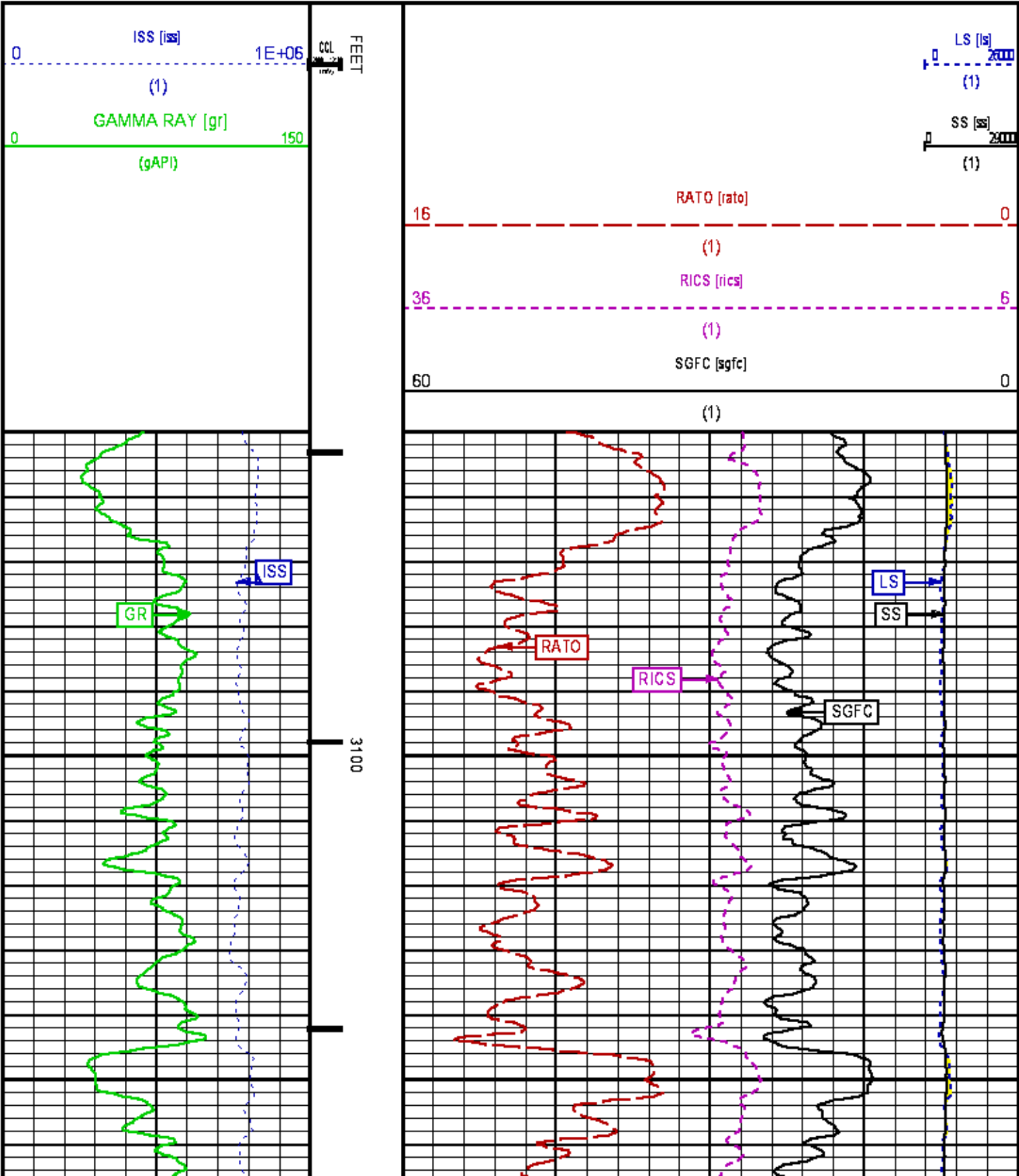
Company
: WPX ENERGY

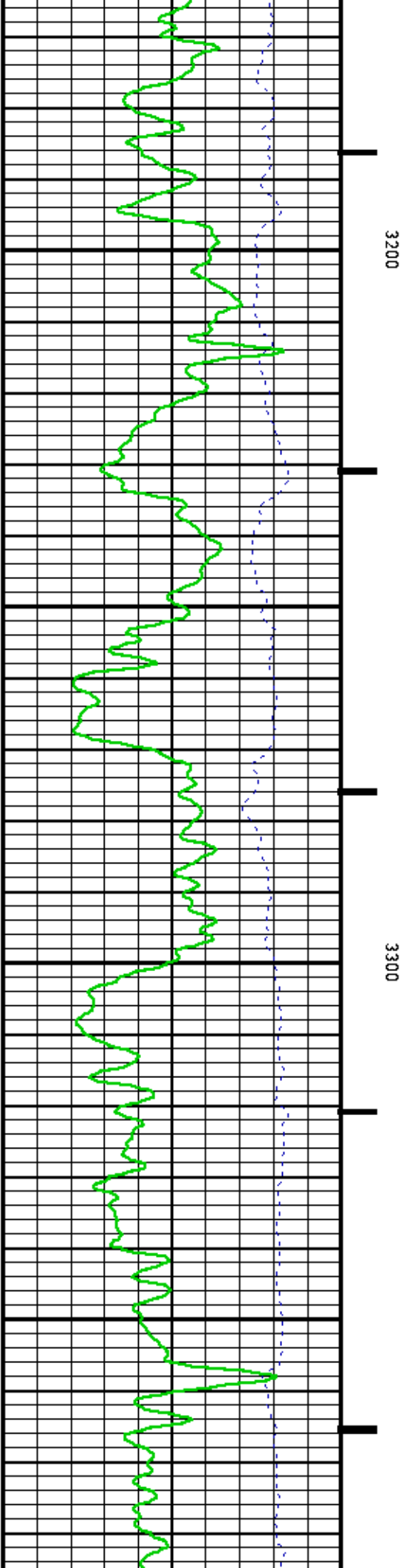
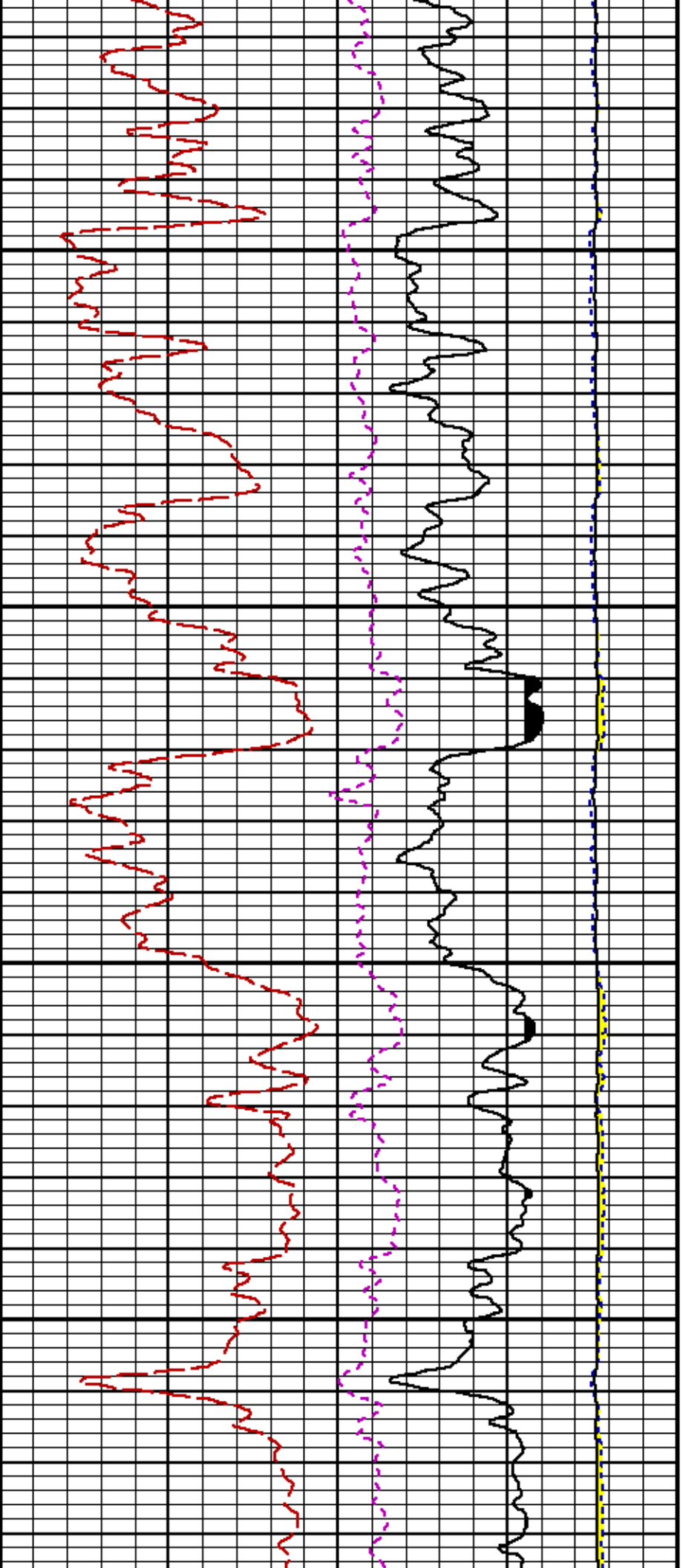
Well
: C&C ENERGY GM 421-13

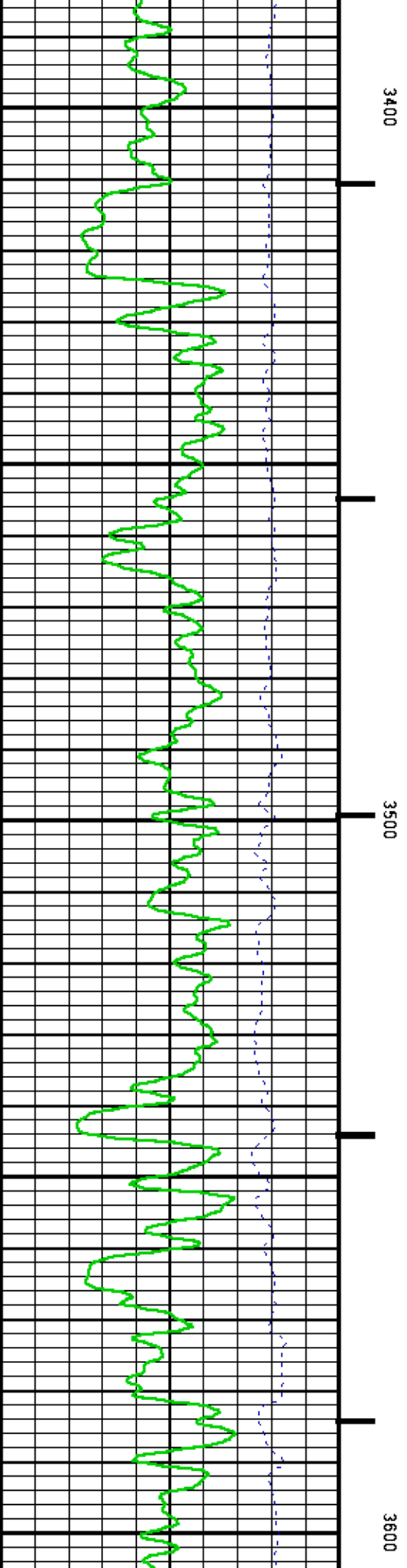
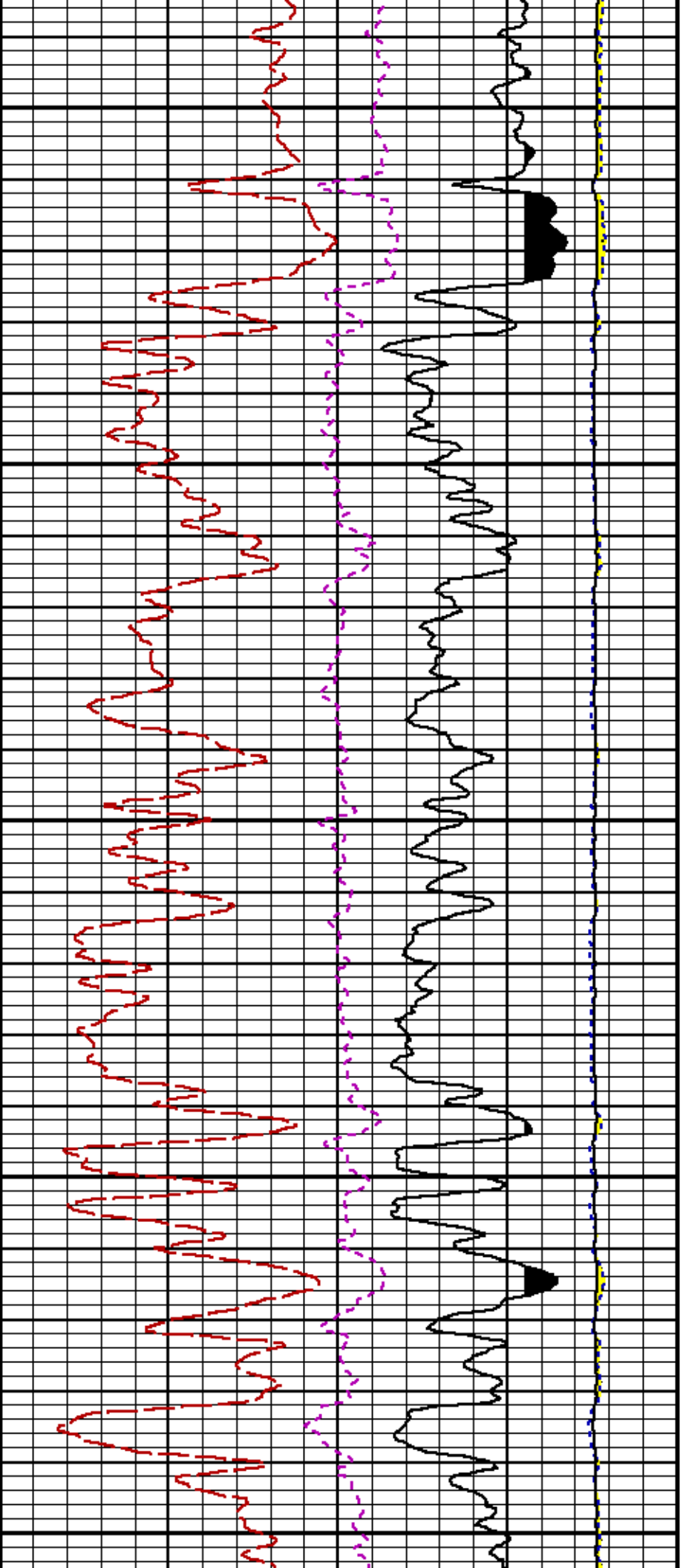
Field
: GRAND VALLEY

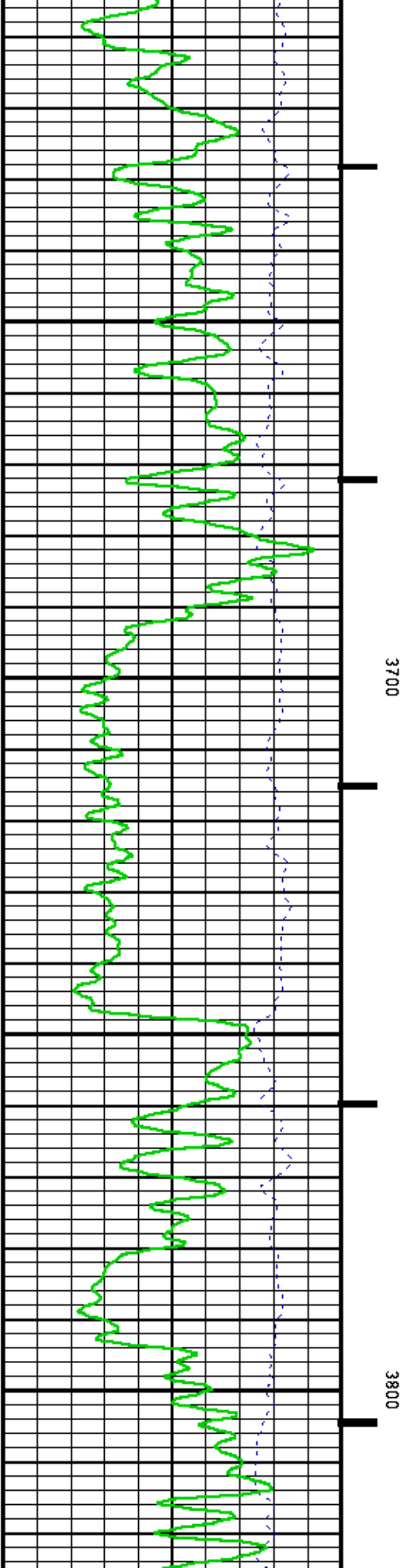
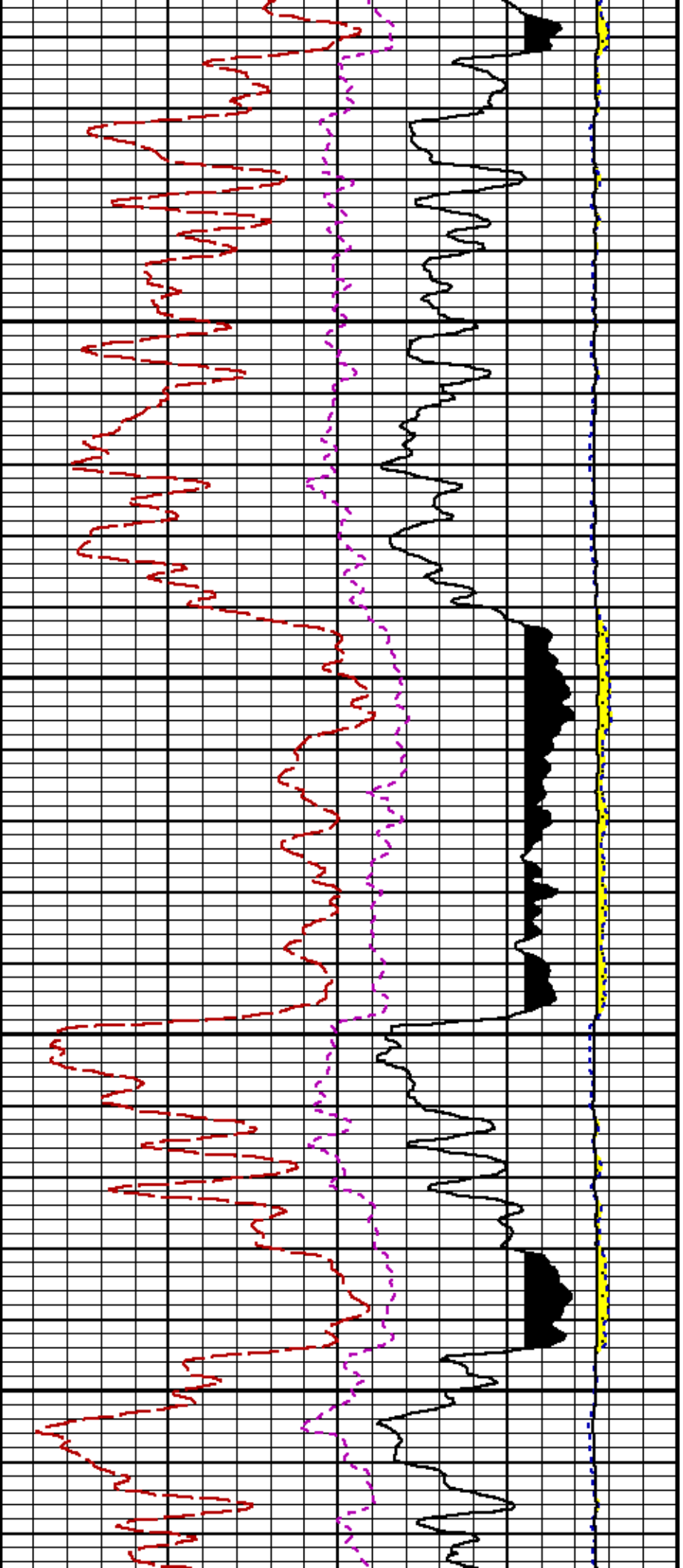
File Interval
: 16.75 - 6266 Feet

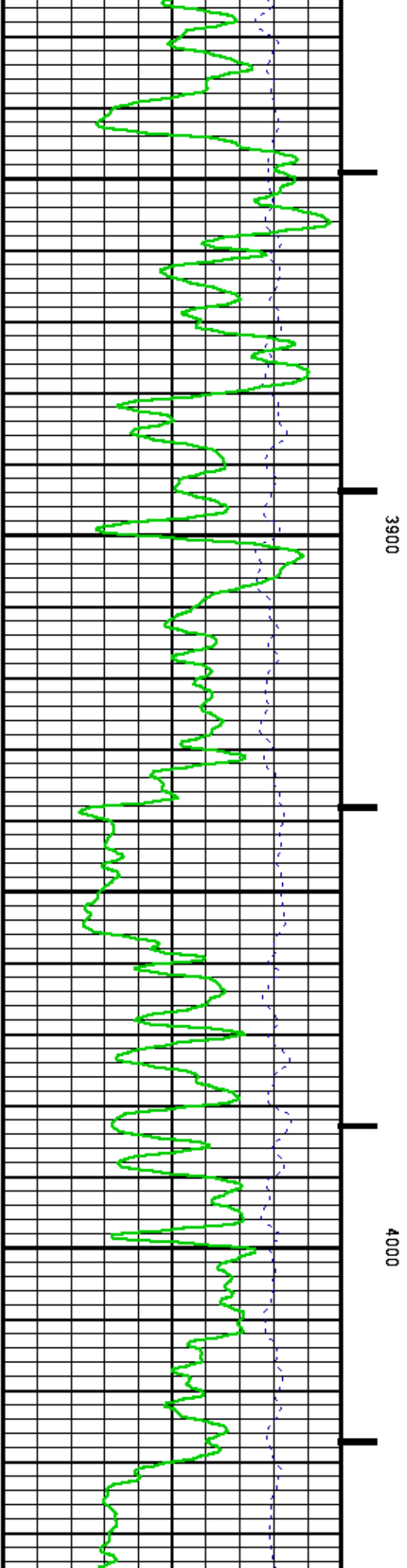
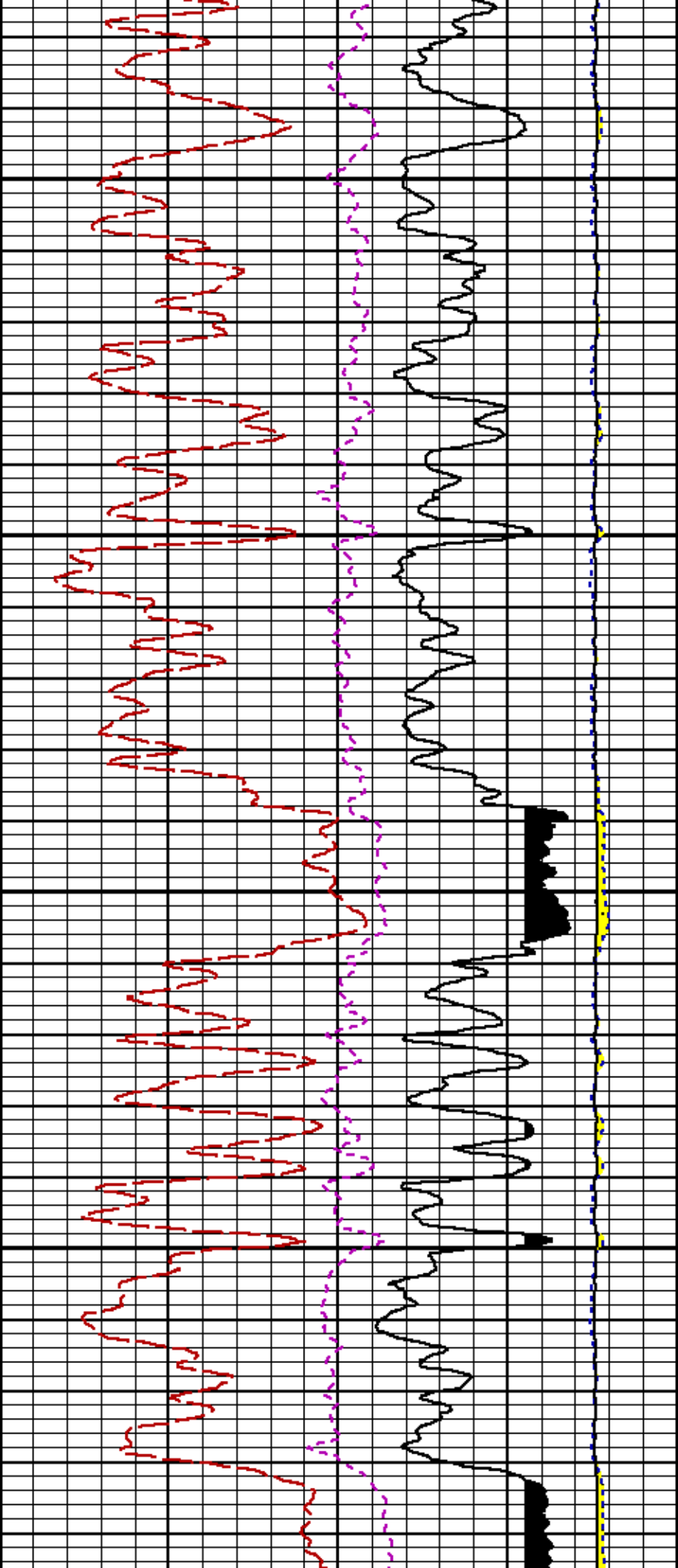
OCT
: n353h

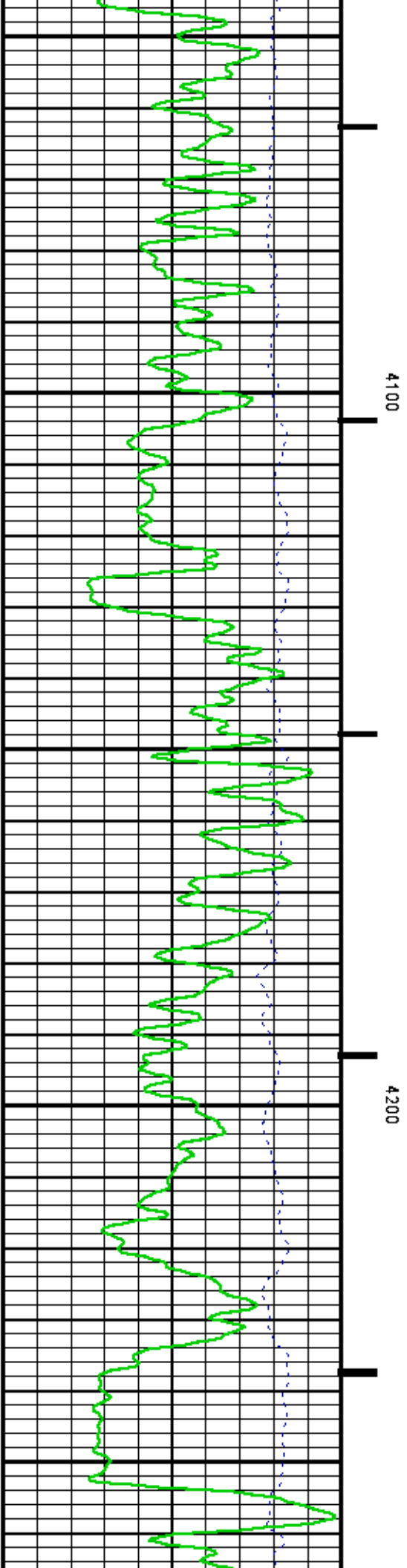
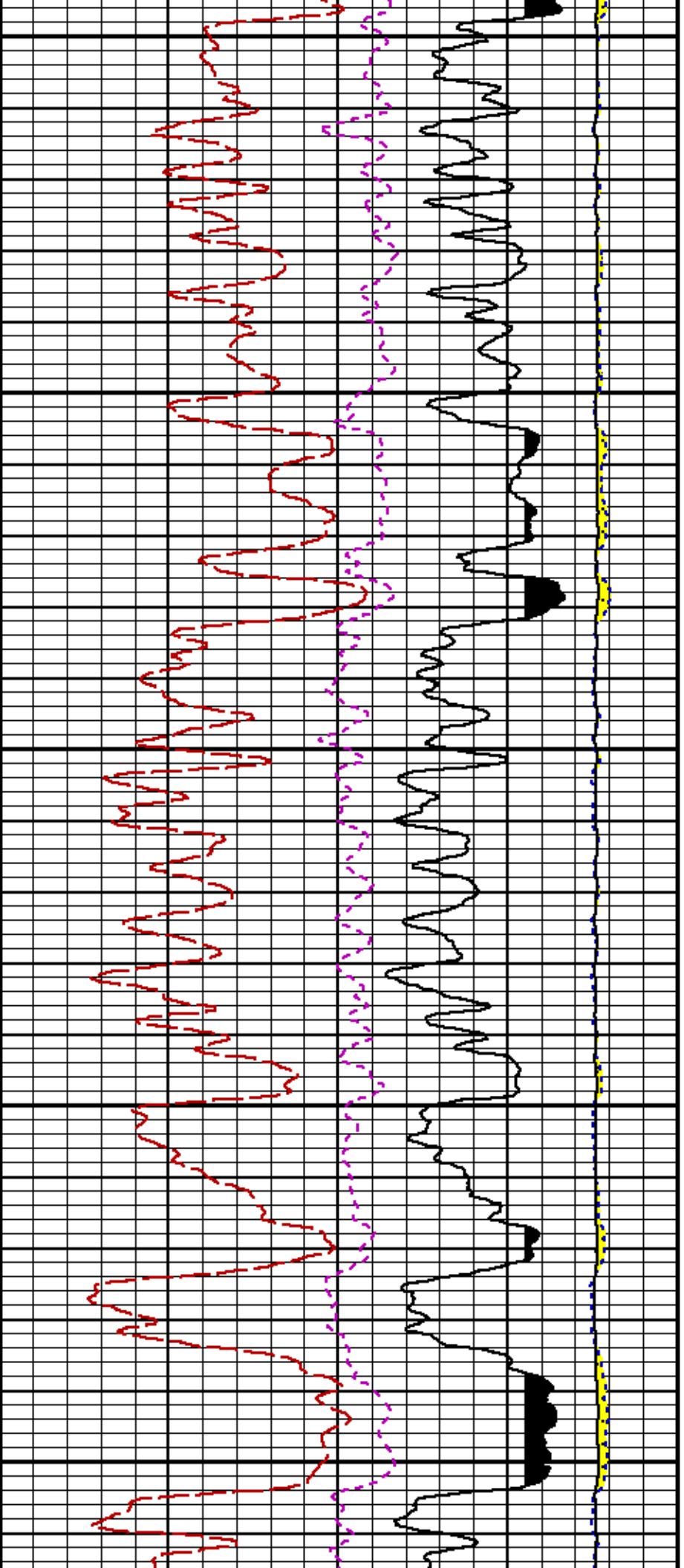


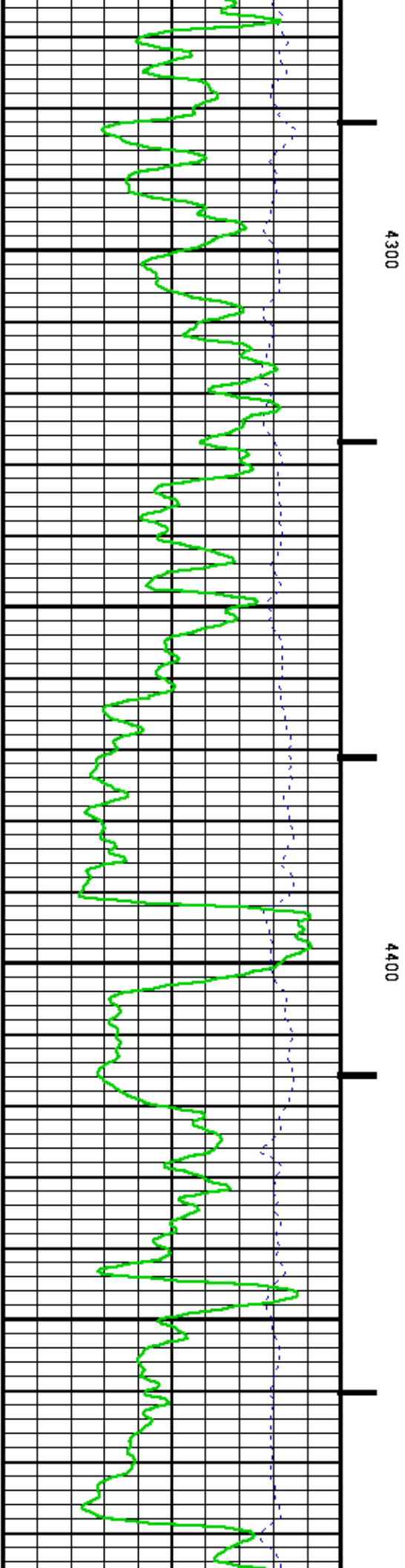
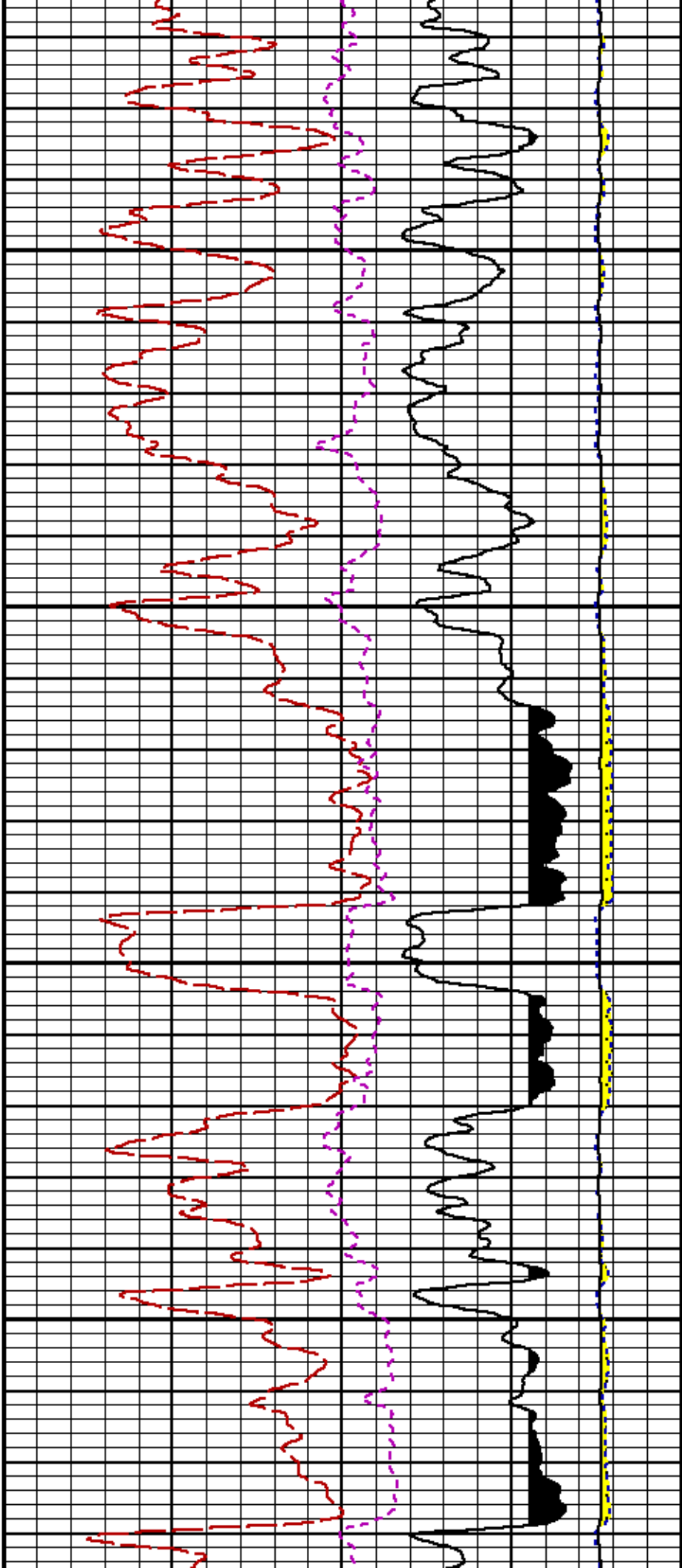


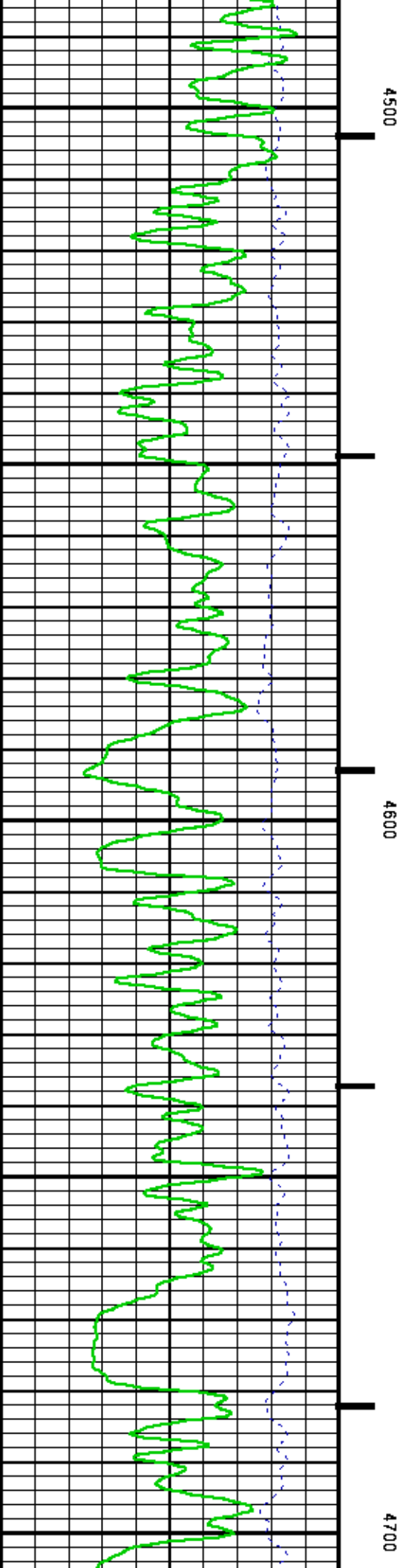
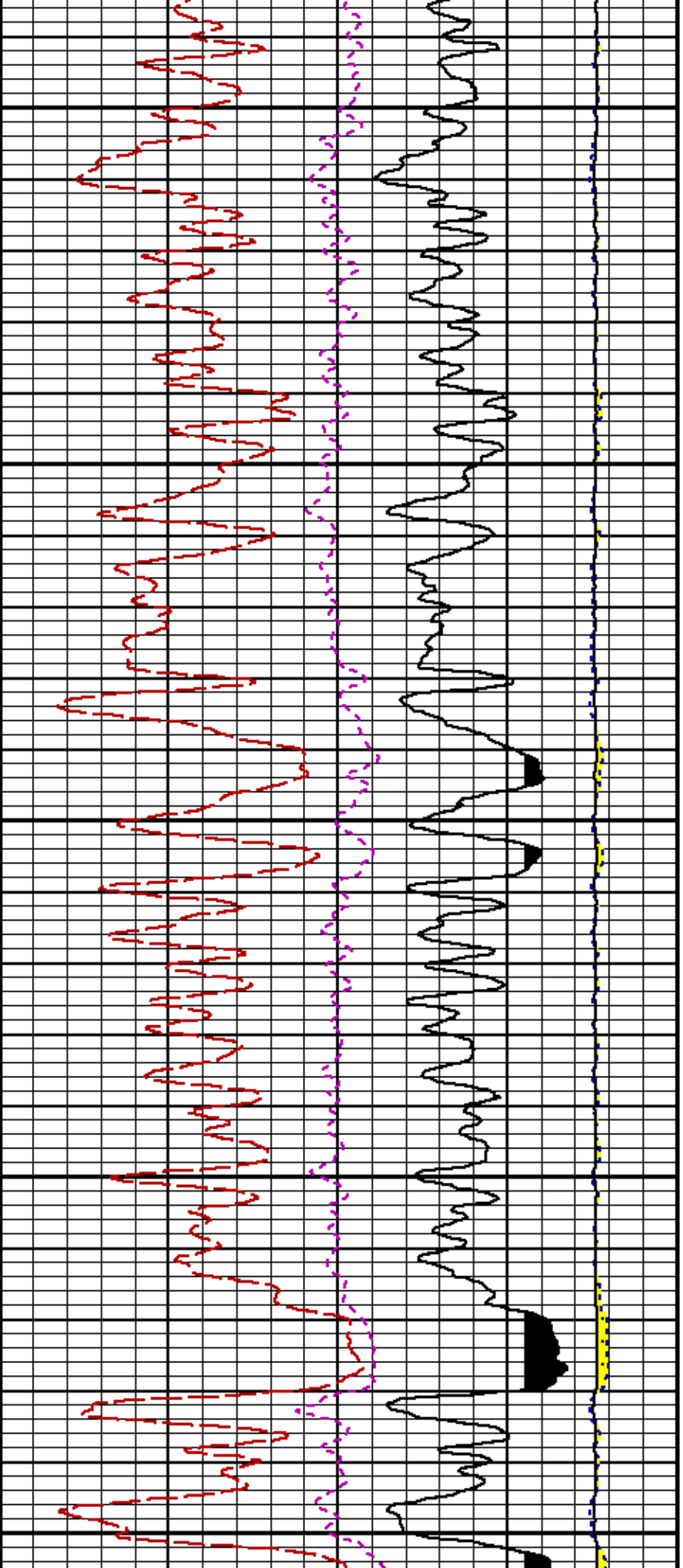


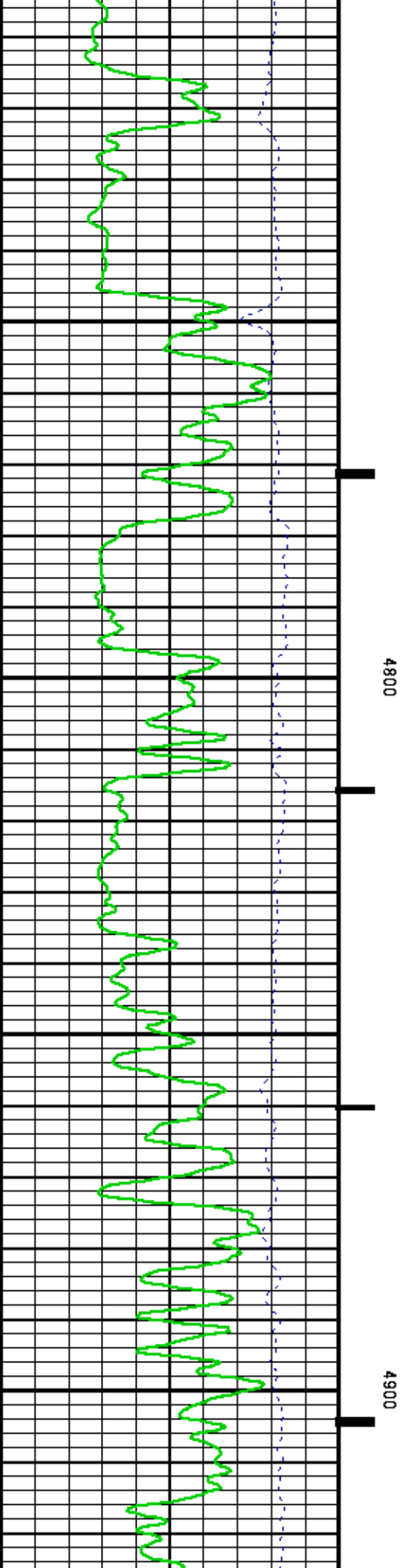
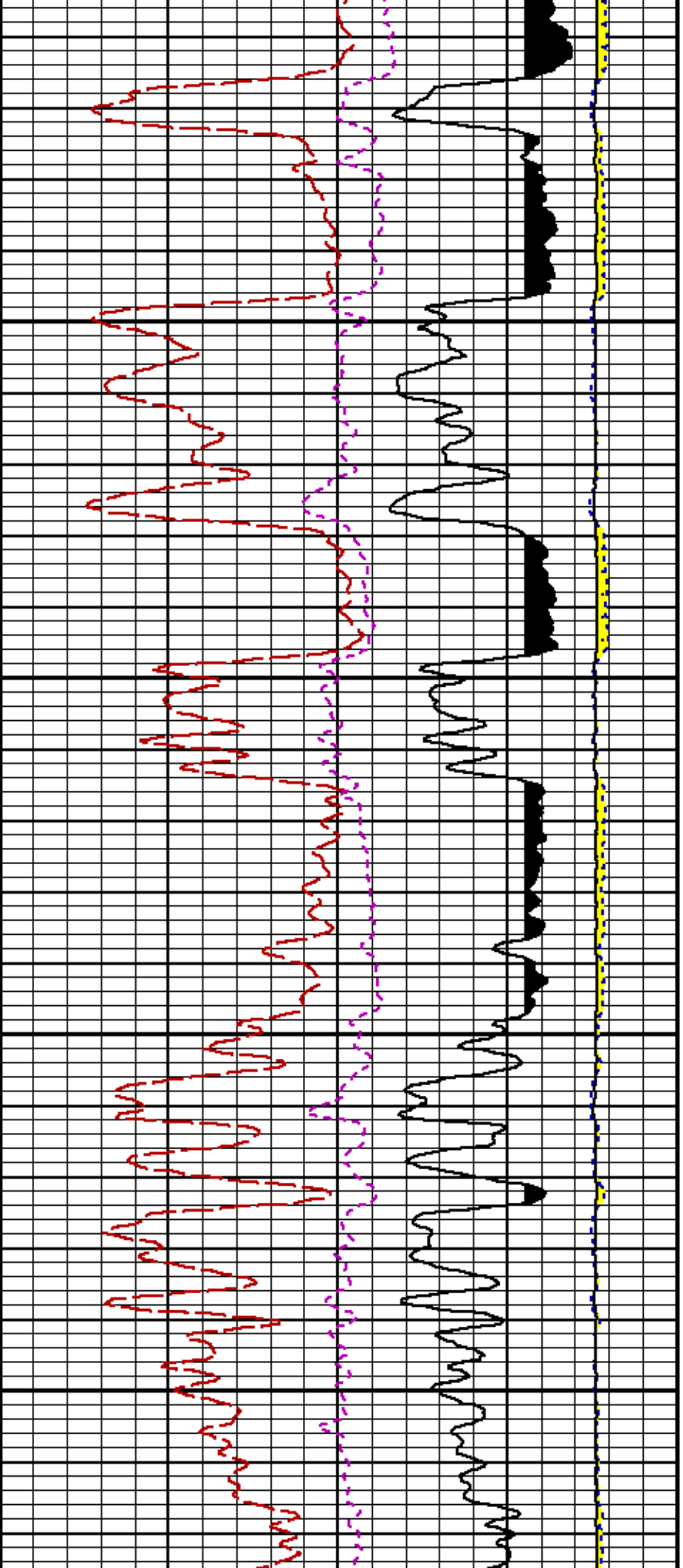


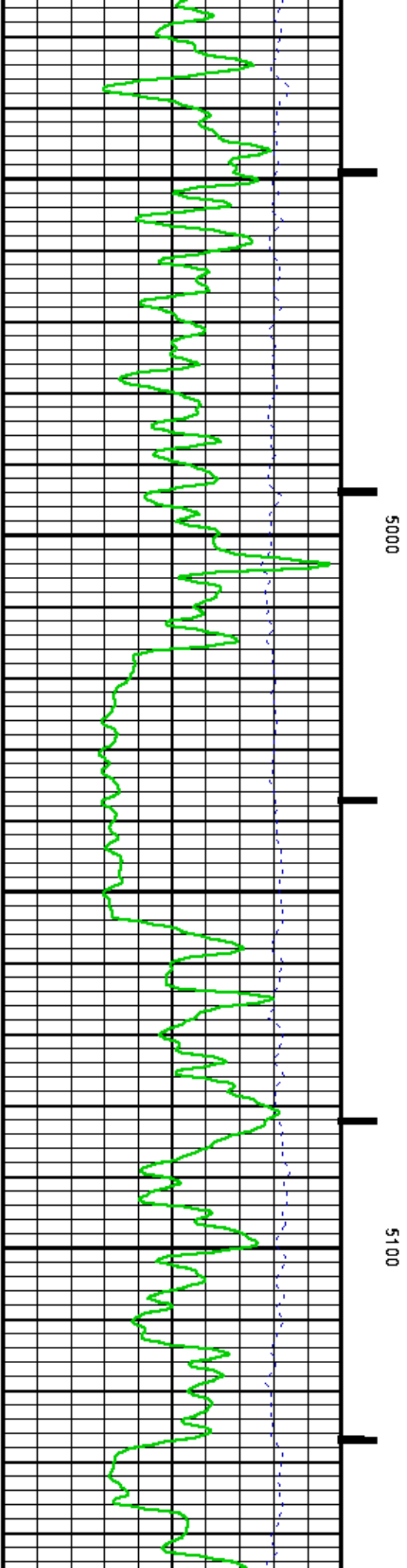
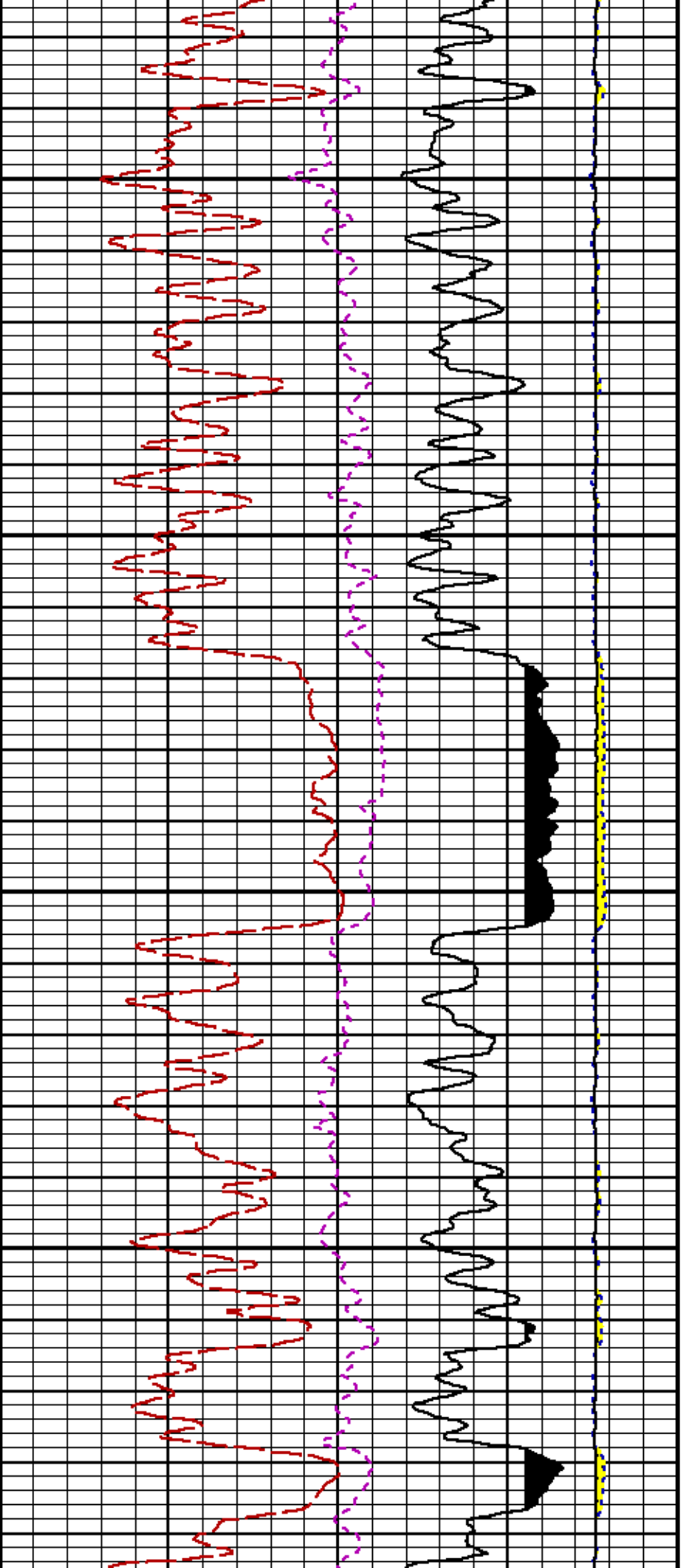


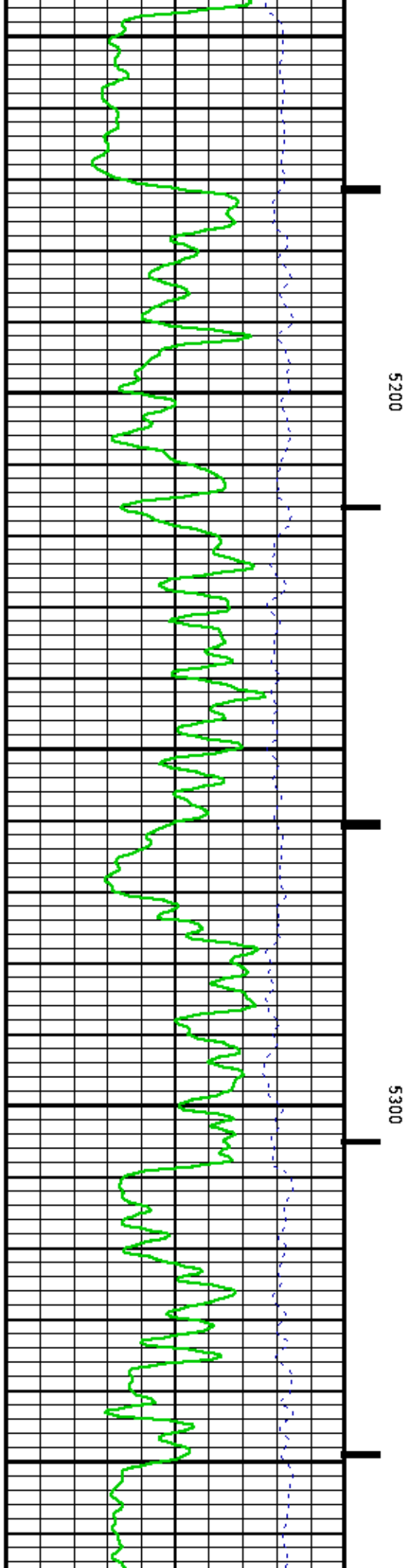
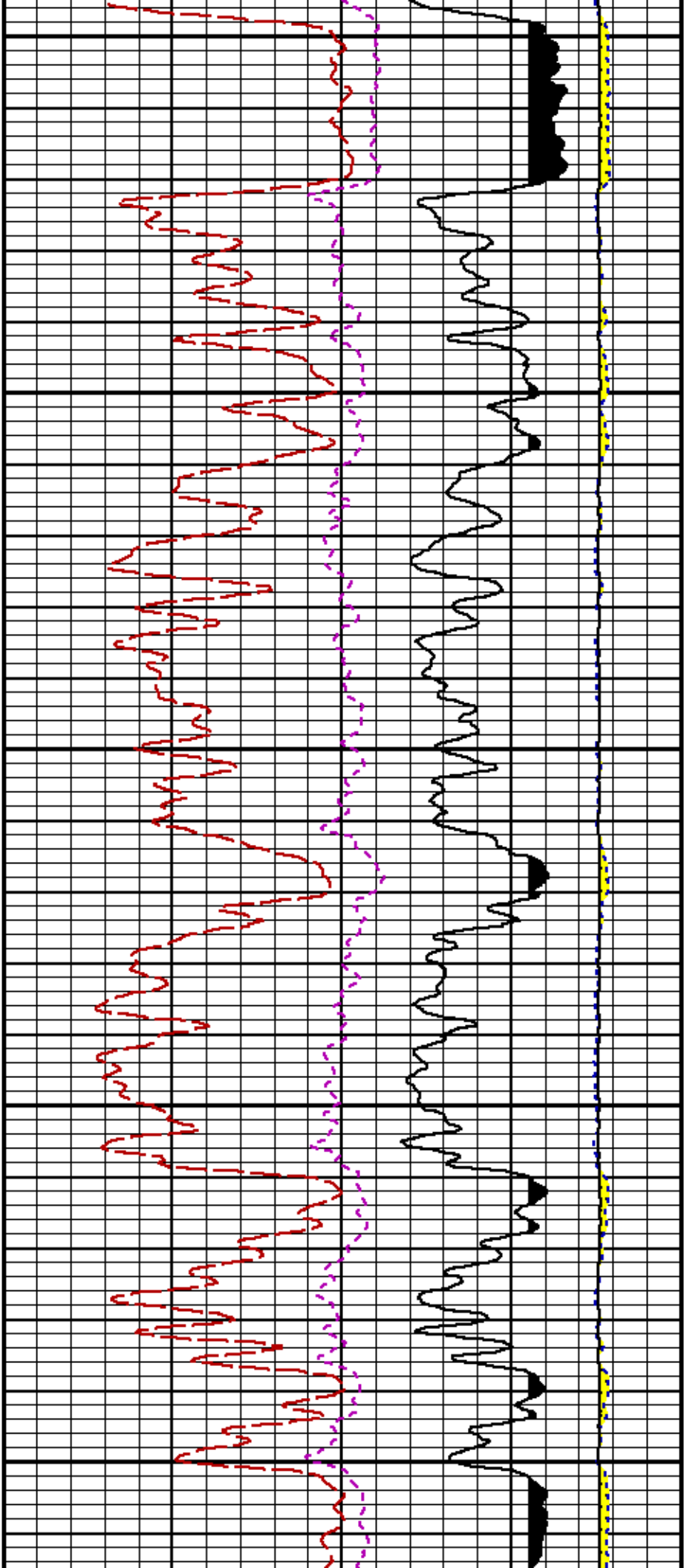


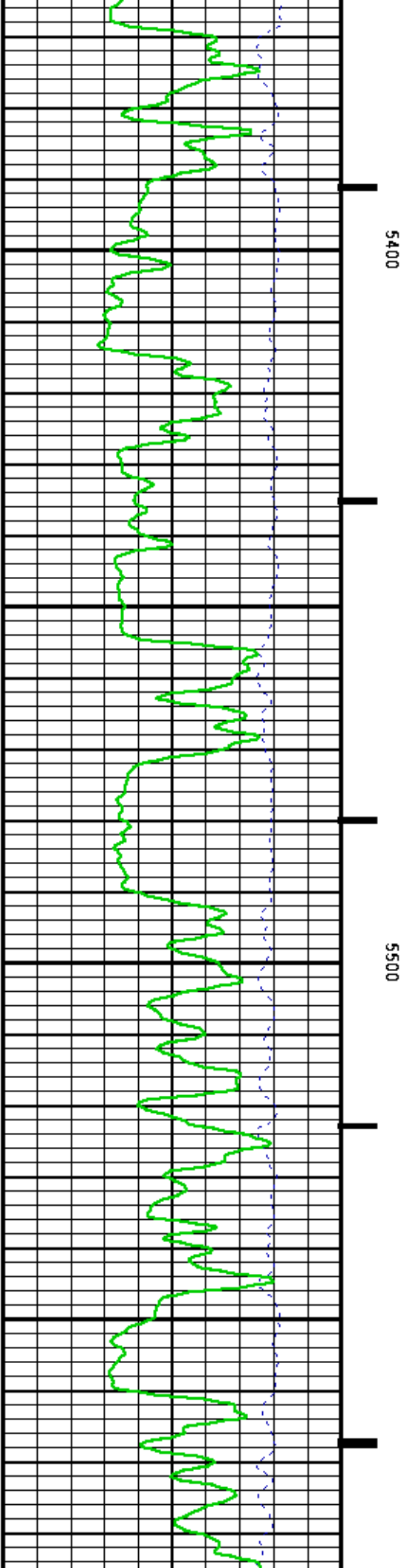
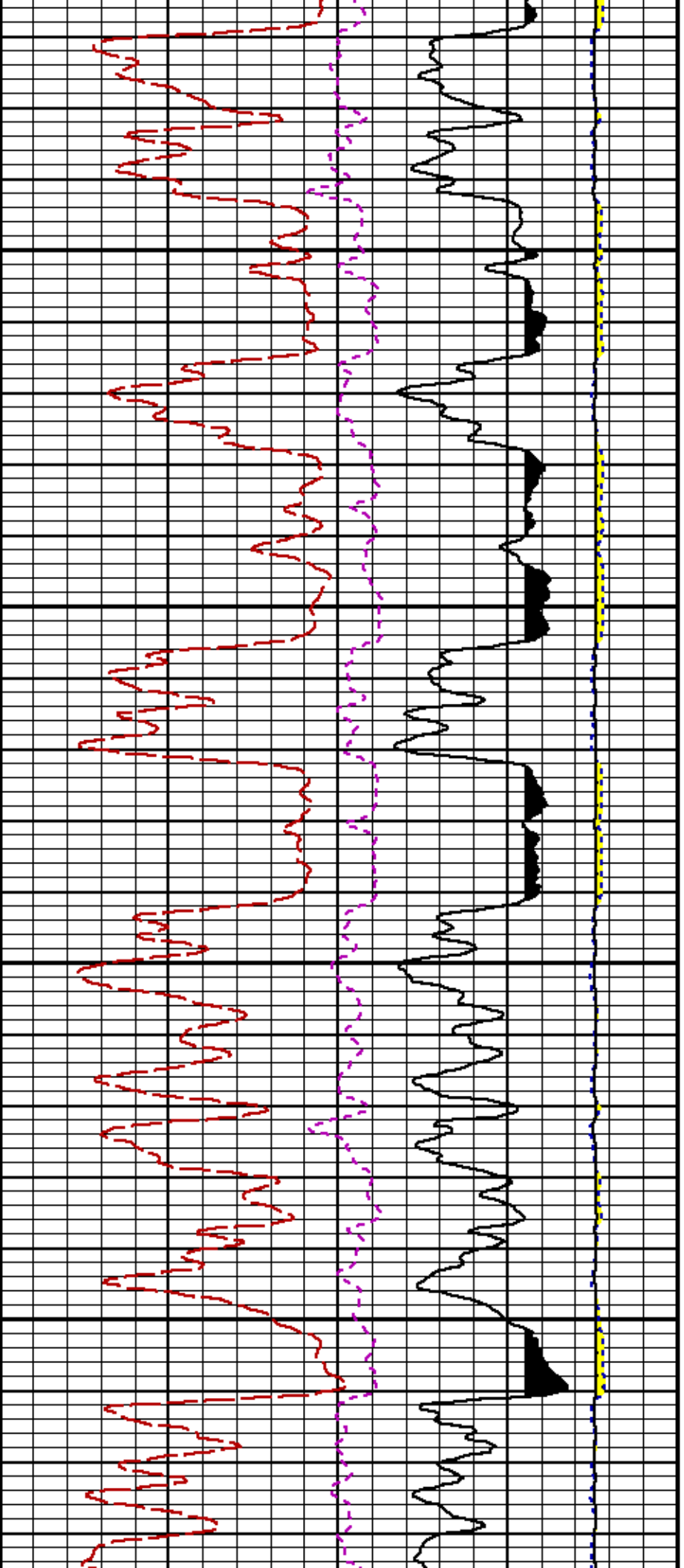


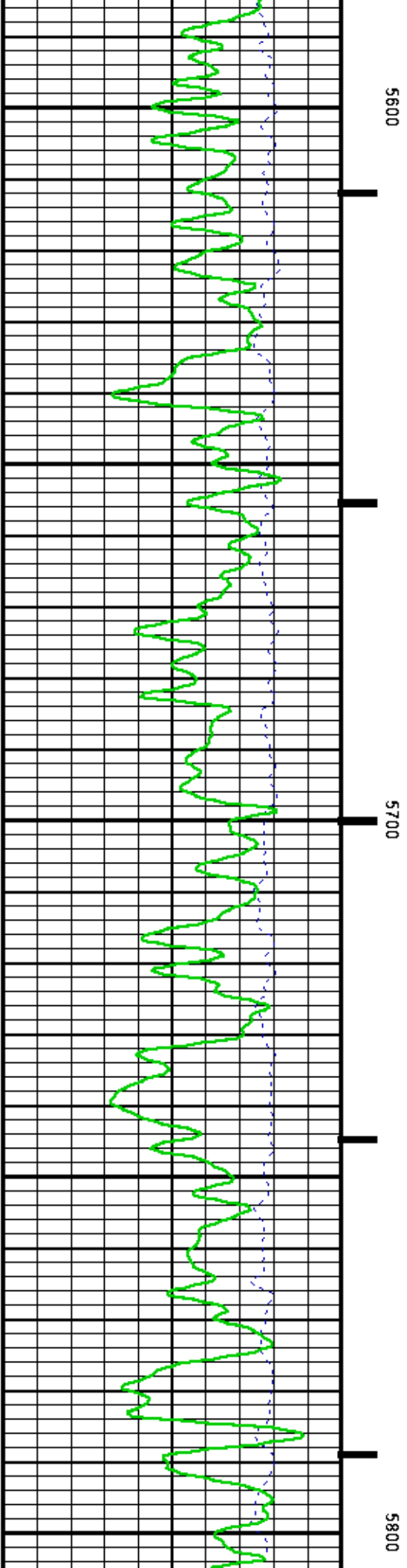
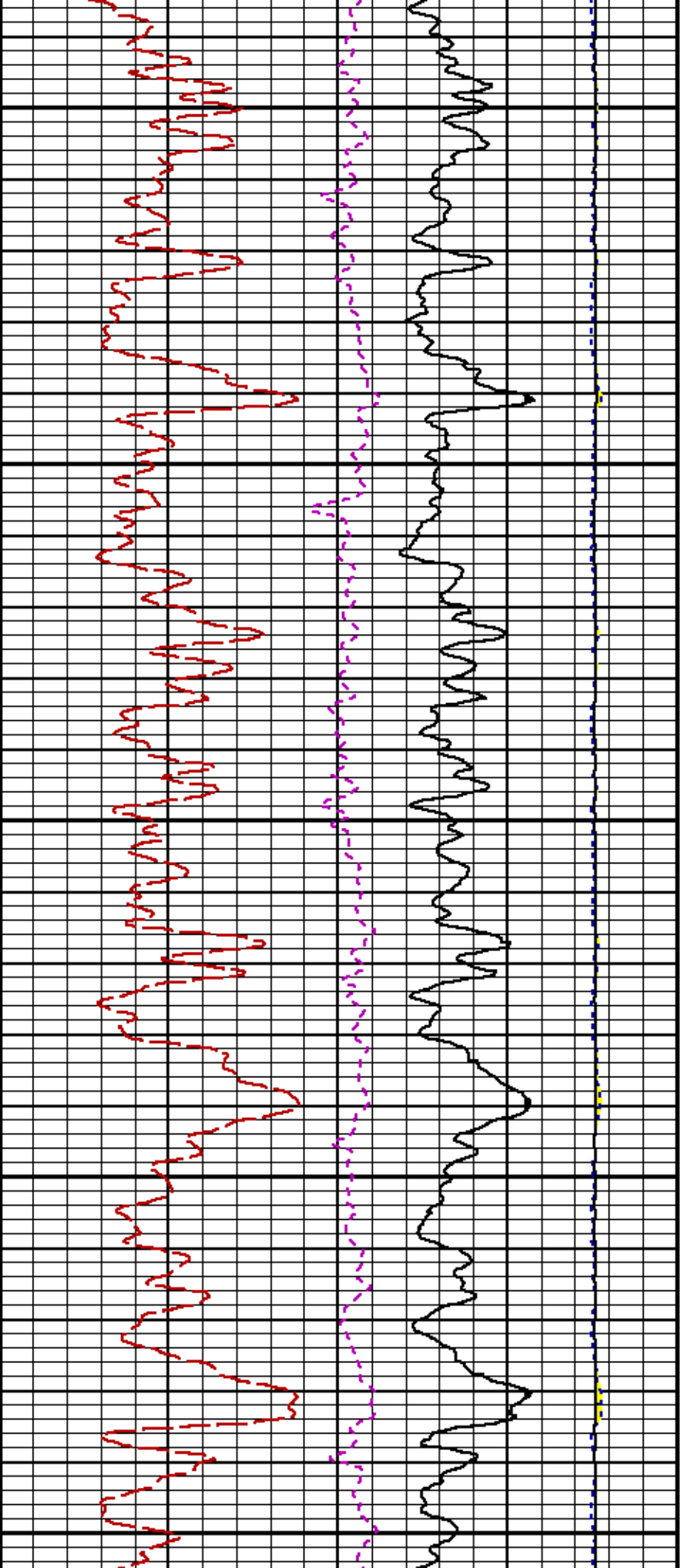


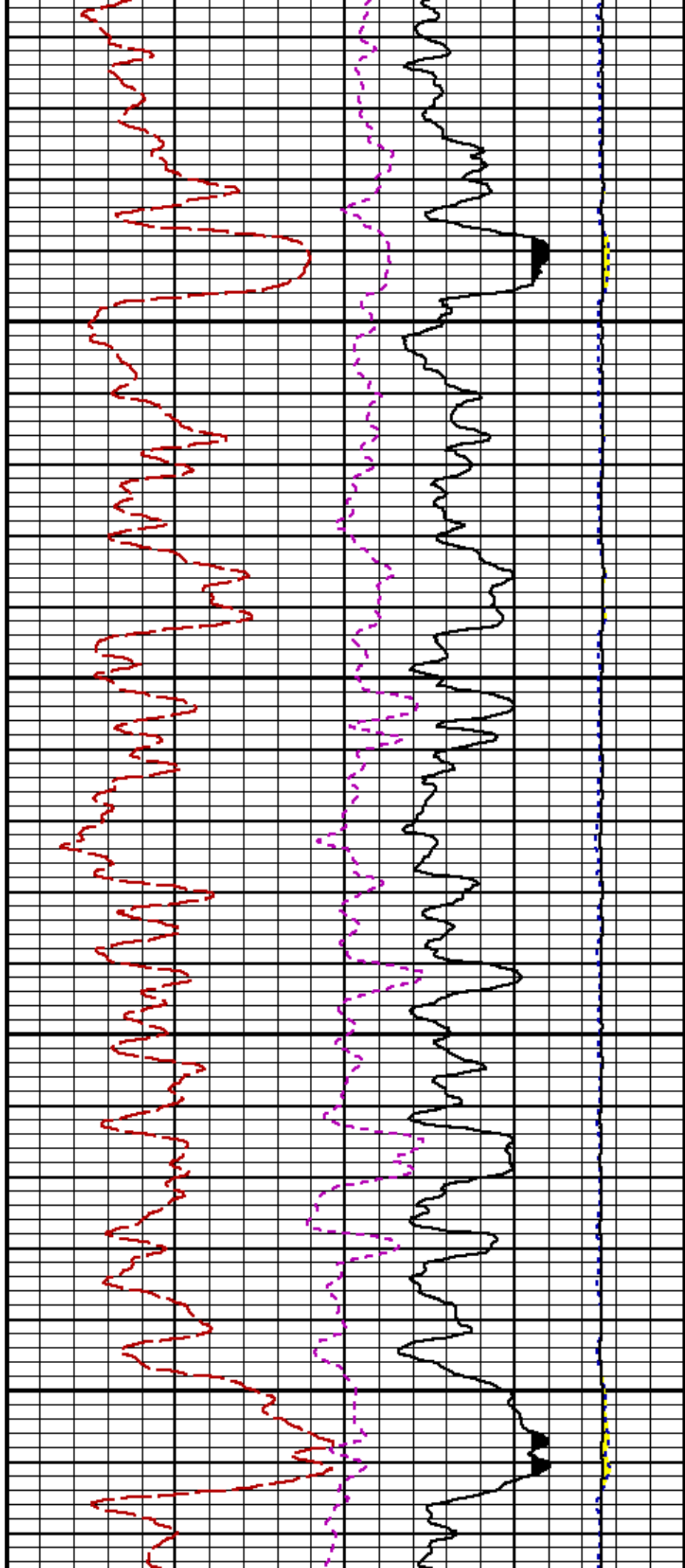
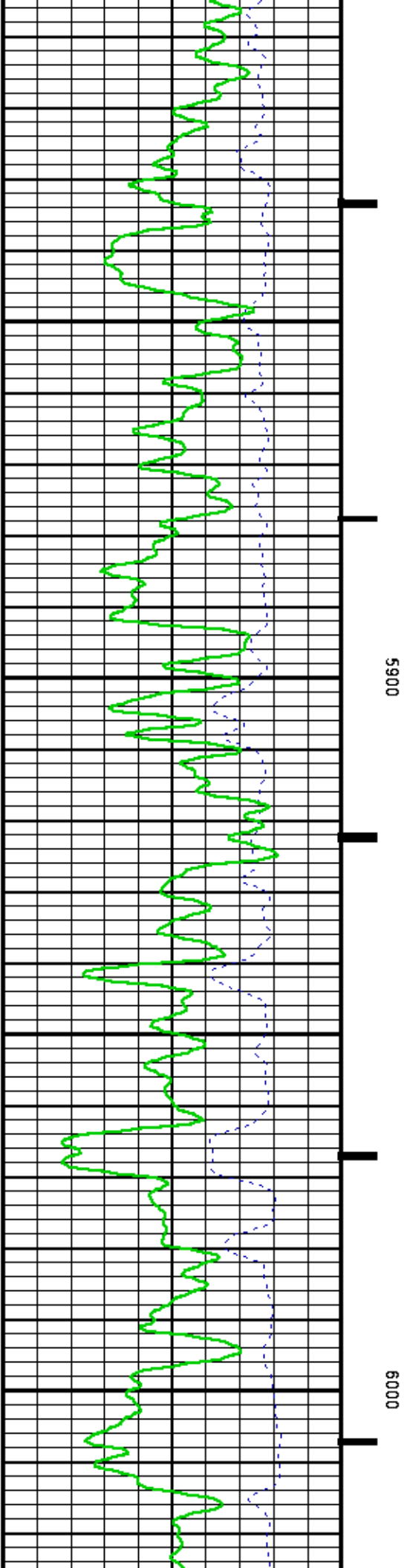


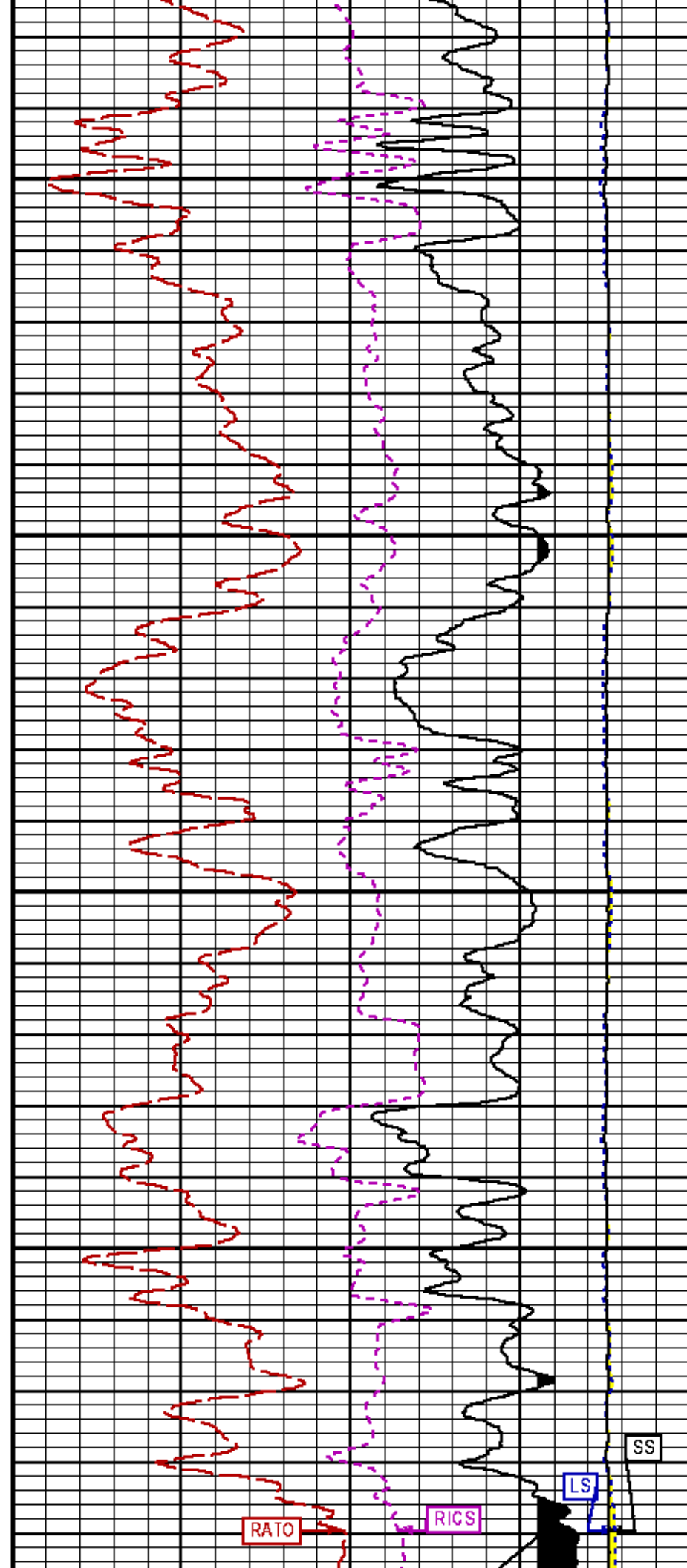
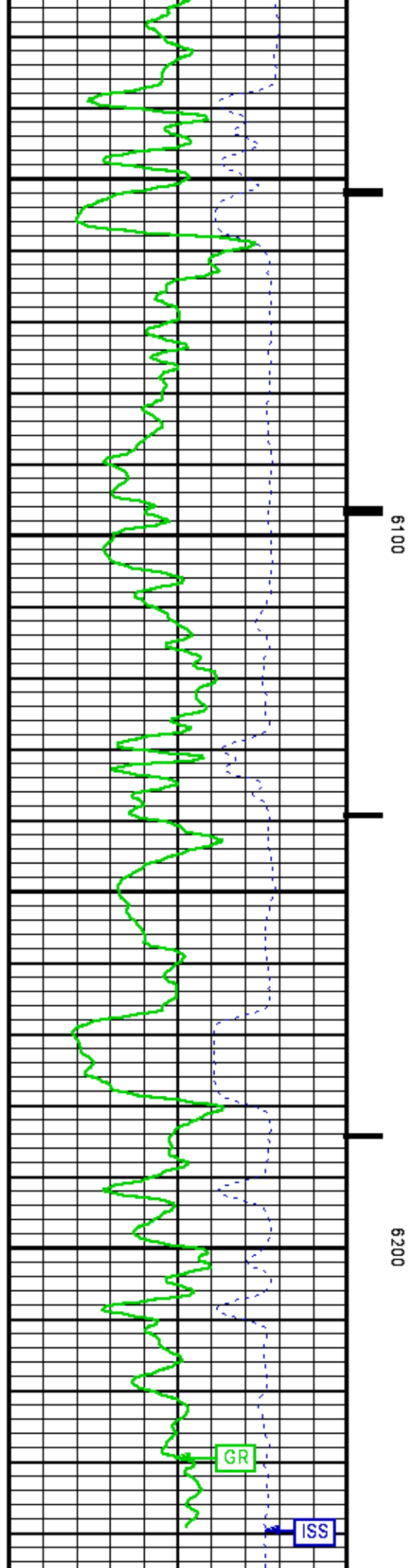


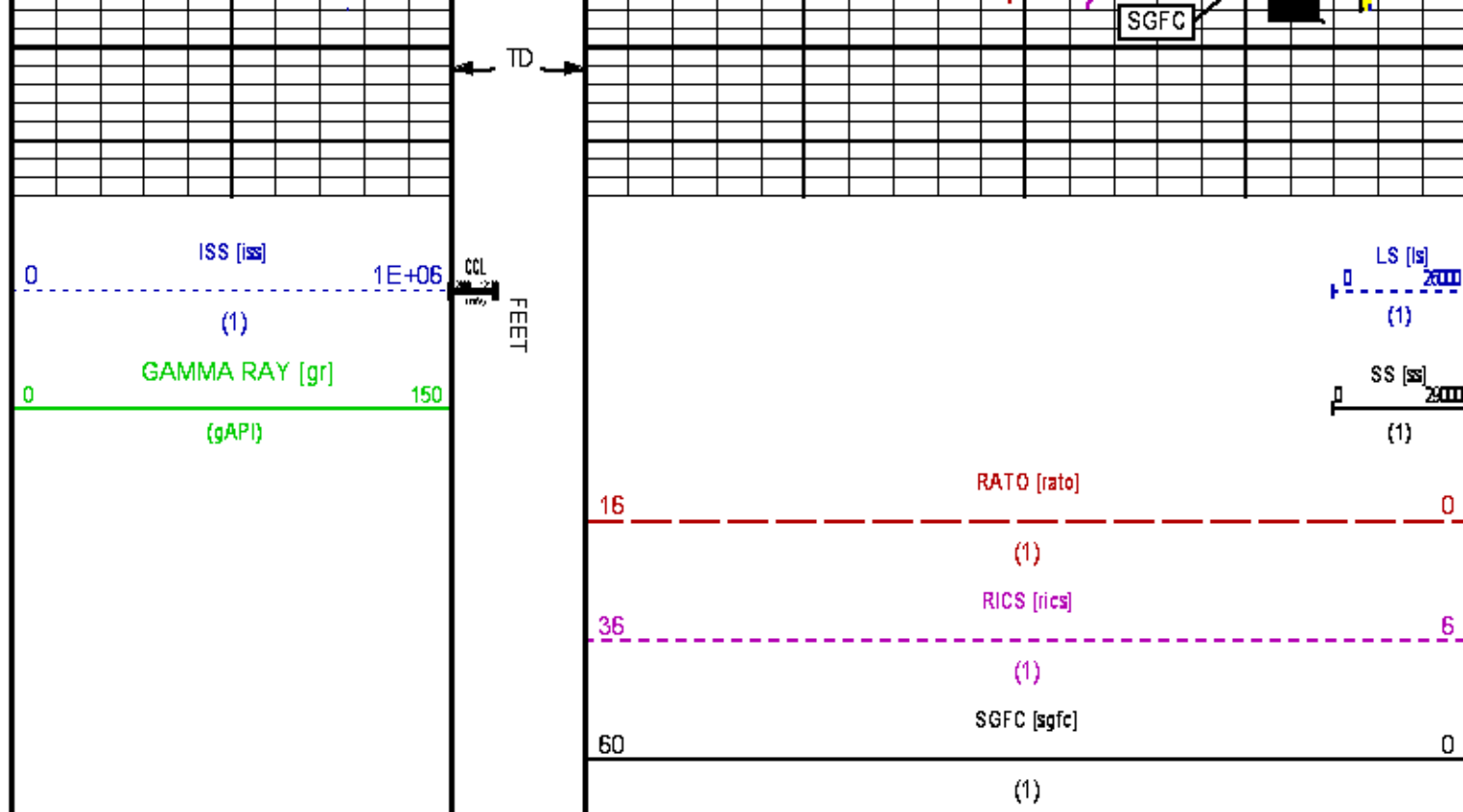












REPEAT SECTION PNC 3-D MODE

ECLIPS 6.2i ECLIPS General Release Rel 6.2i Wed Jun 12 12:21:40 CDT 2013
Updates: 1

Plotted: Sun May 18 08:38:58 2014

PARAMETER AND FILTER SUMMARY REPORT					
FILE: /dat1a/CH085724/n353hREPEAT01.prm LOGGING MODE: DEPTH DIRECTION: UP TOP DEPTH: 5442.375 ft BOTTOM DEPTH: 5803.750 ft					
SYMMETRIC FILTER					
MEASUREMENT TYPE	PARAMETER	VALUE	UNITS	INTERVAL (ft)	
GR	FILTER Q	medium (1)		TOP	BOTTOM
RPM PROCESSING					
MEASUREMENT TYPE	PARAMETER	VALUE	UNITS	INTERVAL (ft)	
PNC Parameters	BOREHOLE CONTENTS	FLUID		TOP	BOTTOM
	OPEN/CASED HOLE	CASED HOLE		"	"
	BOREHOLE SIZE	8.75	in	"	"
	CASING SIZE	4.50	in	"	"
	MATRIX	SANDSTONE		"	"
	CORRECTION BUFFER	11		"	"

CURVE DESCRIPTION REPORT		
CURVE NAME	CREATION DATE	CURVE DESCRIPTION
F1:CCL	May 15 16:25:13 2014	CASING COLLAR LOCATOR

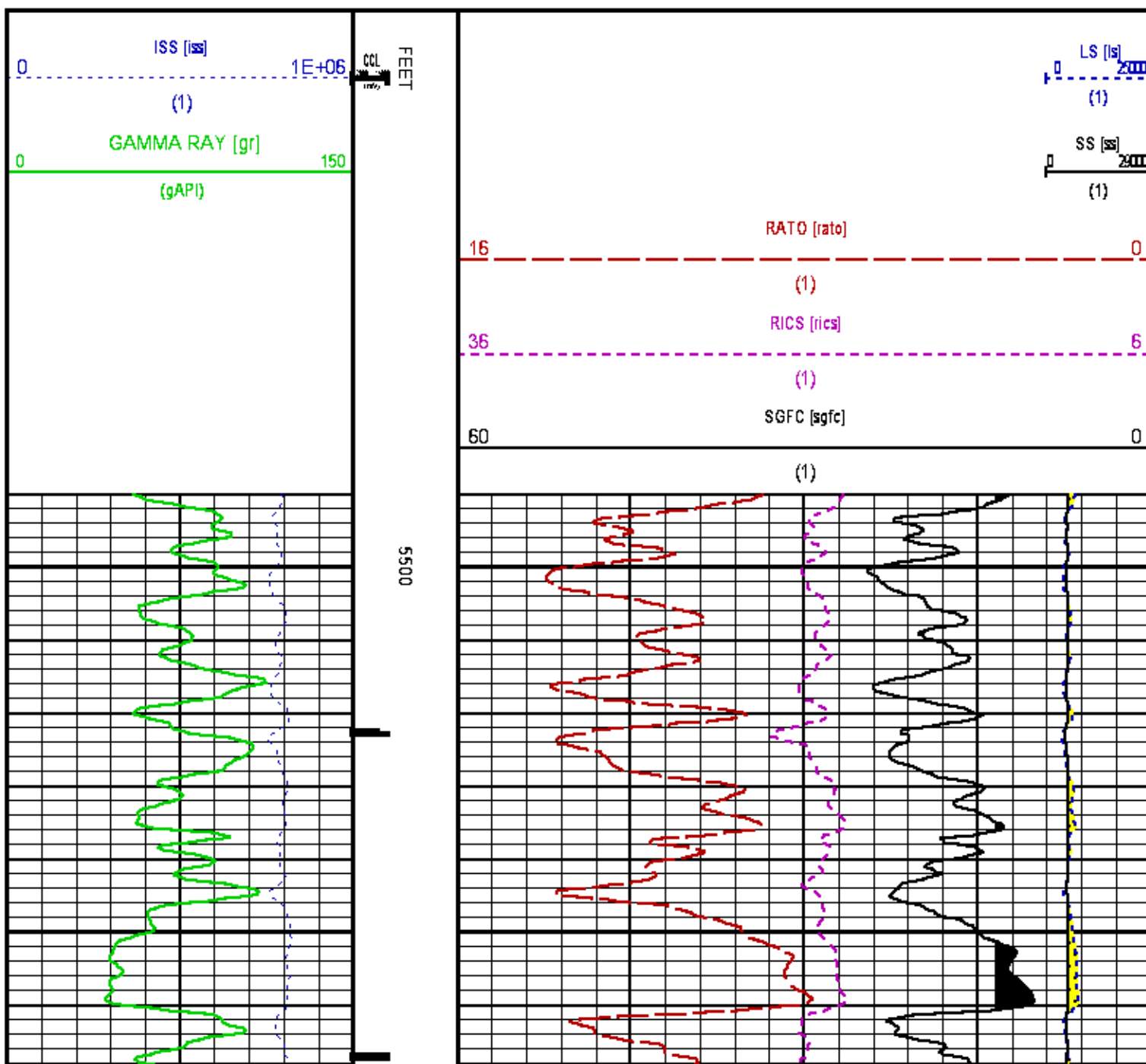
F1:GR	May 15 16:25:13 2014	GAMMA RAY
F1:ISS	May 15 16:25:13 2014	INELASTIC SHORT SPACE COUNT RATE
F1:LS	May 15 16:25:13 2014	LONG SPACE COUNT RATE
F1:RATO	May 15 16:25:13 2014	SHORT/LONG SPACE COUNT RATE RATIO
F1:RICS	May 15 16:25:13 2014	SHORT SPACE INELASTIC TO CAPTURE COUNT RATE RATIO (ISS/CSS)
F1:SGFC	May 15 16:25:13 2014	CORRECTED FORMATION SIGMA
F1:SS	May 15 16:25:13 2014	SHORT SPACE COUNT RATE

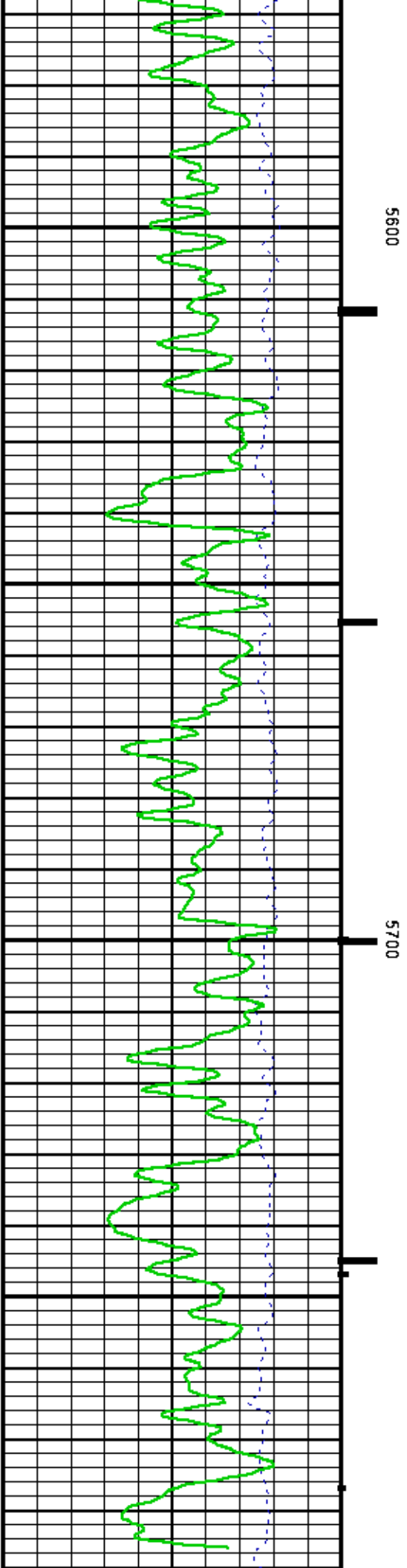
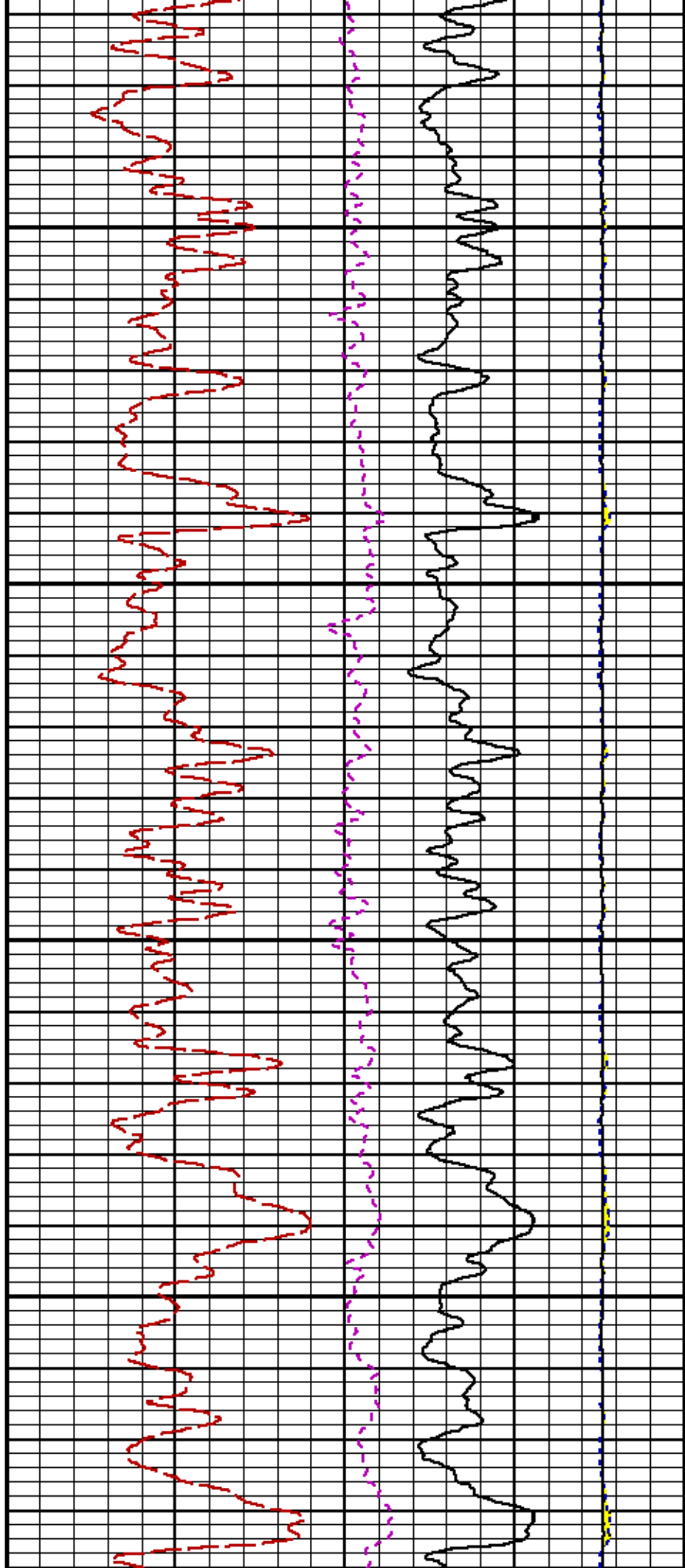
CURVE MEASURE POINT OFFSET

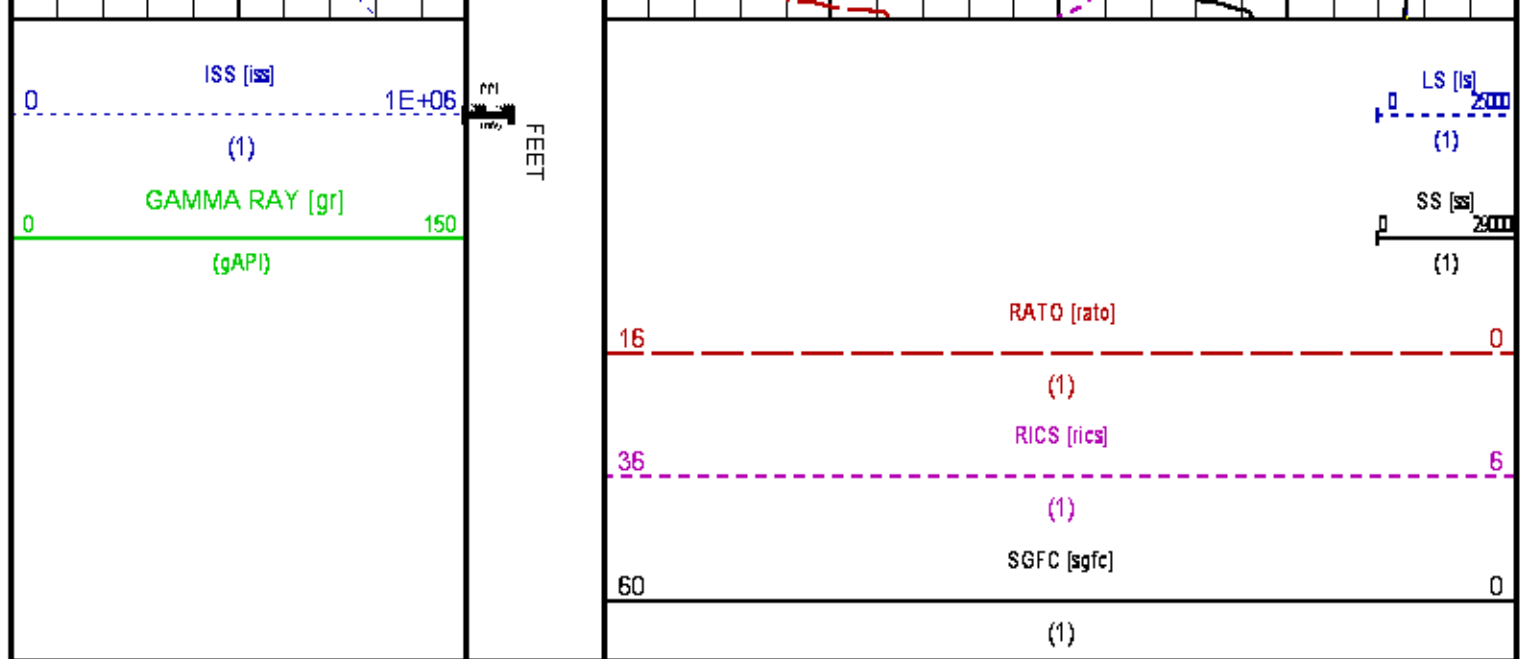
CURVE	OFFSET (ft)	CURVE	OFFSET (ft)	CURVE	OFFSET (ft)	CURVE	OFFSET (ft)
CCL	26.00	ISS	12.75	RATO	12.75	SGFC	12.75
GR	23.00	LS	12.75	RICS	12.75	SS	12.75

Presentation : HL6670:RPM_REPEAT_FINAL_PRESENTATION_05_18_2014.fvpdf [5"/100' Scale]
Plot Interval : 5490 - 5790 Feet

Data File 1 : F1 : HL6670:/dat1a/CH085724/n353hREPEAT01.xtf
Created On : May 15 16:25:13 2014
Company : WPX ENERGY
Well : C&C ENERGY GM 421-13
Field : GRAND VALLEY
File Interval : 5422.25 - 5809.75 Feet
OCT : n353h







CALIBRATION / VERIFICATION SUMMARY

Source File: /mnt1a/CH085724/rn353h_RPM.tp1

GR PRIMARY CALIBRATION SUMMARY

TOOL #:	8262XA 10317216	DATE/TIME PERFORMED:	Tue May 6 11:23:07 2014				
UNIT #:	3880TA HL6670	CALB JIG #:	4702NK VBA-905				
	BACKGROUND (ct6/s)	CALBRTR ON (ct6/s)	GR DIFF (ct6/s)	MULT	BACKGROUND (gAPI)	CALBRTR ON (gAPI)	CALBRTR (gAPI)
GR	98.04	440.29	342.2	0.541	53.00	238.00	185

GR PRIMARY VERIFICATION SUMMARY

TOOL #:	8262XA 10317216			DATE/TIME PERFORMED:	Tue May 6 11:27:45 2014	
	UNIT #:	3880TA HL6670		VERI JIG #:	4702NK VBA-905	
	BACKGROUND (ct6/s)	CALBRTR ON (ct6/s)	MULT	BACKGROUND (gAPI)	CALBRTR ON (gAPI)	DIFF. (gAPI)
GR	97.16	432.07	0.541	52.52	233.55	181.04
						119.00 189.00

RPM_PNC_3D PRIMARY CALIBRATION SUMMARY

TOOL:	8283PA 10466231			DATE/TIME PERFORMED:	Tue May 13 12:59:39 2014			
UNIT:	3880TA HL6670	CALIBRATOR:	2437XB 112674	SOURCE:	8281AA 11724361	HOURS:	8281AA 129	
	ISS	Mtr Vite (V)	SS Gain	LS Gain	XLS Gain	EA Temp (degF)	Sync Delay (usec)	RCAL
Raw Data	812300	121	2261	2282	2276	126	7	0.9741
Interpolated	1300000	144	2242	2276	2274			
	ISS	BKS	BKL	BKX	SGA1	SDA1	SGA2	SDA2
Raw Data	812300	7319	1132	152	26.17 25.30 26.10	0.14 0.00 0.20	24.21 23.00 21.00	0.31 0.00 0.10
	ISS	ILS	IXS	SS	SS2	LS	CSS	CLS
Raw Data	812300	175079	27254	94990	33788	8764	57492	14038
Fit Quality %		1.514	1.530	1.479	1.439	1.666	1.344	1.597

	ISS	RBOR	RIN	RIN13	RICS	RATO	RTWO	RONE
	ISS/LS		ISS/XS		ISS/CSS	SS/LS	SS2/LS	CSS/CLS
Raw Data	812300	1.43	4.64	29.82	14.13	10.84	3.86	4.10
	1.42	1.45	3.85	32.20	32.70	10.08	11.10	3.57
Fit Quality %		0.069	0.171	0.157	0.149	0.170	0.180	0.125
Reduced	1393172	1.43	4.66	29.95	14.19	10.86	3.86	4.10
	1.42	1.45	3.85	32.20	32.70	10.08	11.10	3.57

TPSETEMP PRIMARY CALIBRATION SUMMARY

TOOL #: 8255XA 1177456B

DATE/TIME PERFORMED: Wed May 14 12:39:45 2014

UNIT #: 3880TA HL6670

	T(0)	T(1)	T(2)	T(3)
Corr Coeff for Temp	-9.274653E+00	1.055639E-01	2.143764E-06	-2.782846E-10

INSTRUMENT CONFIGURATION

Source File: /mnt1a/GH085724/RPM_WPX.tbl

A3 CABLEHEAD

Diameter : 1.37"

PCM POWER SUPPLY

Diameter : 1.70"
Length : 3.86'
Weight : 18.1 lbs
Series : B350EA
Mnemonic : PCM

TELEMETRY / CCL

Diameter : 1.70"
Length : 4.48'
Weight : 30.1 lbs
Series : B34BED
Mnemonic : PCM
Measure Point: 1.00': CCL MP

GAMMA RAY

Diameter : 1.70"
Length : 3.03'
Weight : 15.1 lbs
Series : B362XA
Mnemonic : CR
Measure Point: 0.89': CR MP

RPM ELECTRONICS

Diameter : 1.70"
Length : 4.48'
Weight : 16.1 lbs
Series : B381EA
Mnemonic : RPM

RPM C DETECTOR SECTION

Diameter : 1.70"
Length : 9.40'
Weight : 41.1 lbs
Series : B383PA
Mnemonic : RPM
Measure Point: 5.45': XLS DETECTOR
Measure Point: 5.04': LS DETECTOR
Measure Point: 4.79': SS DETECTOR

34.08'

CCL MP 36.03'

CR MP 33.90'

XLS DETECTOR 13.58'
LS DETECTOR 13.16'
SS DETECTOR 12.91'

RPM SOURCE SECTION
 Diameter : 1.70"
 Length : 4.70'
 Weight : 18.1 lbs
 Series : B3B1FA
 Mnemonic : RPM

TEMPERATURE / PRESSURE
 Diameter : 1.70"
 Length : 3.30'
 Weight : 13.1 lbs
 Series : B355XA
 Mnemonic : SRP
 Measure Point: 1.53' : TEMP MP

TEMP MP : 1.65'
 PRES MP : 0.00'

BULL PLUG 1 11/16

TOTAL LENGTH: 34.08'
 TOTAL WEIGHT: 144.1 lbs
 MAX DIAMETER: 0'1.70"



COMPANY WPX ENERGY
 WELL C&C ENERGY GM 421-13
 FIELD GRAND VALLEY
 COUNTY GARFIELD STATE CO

FILE NO: CH085724
 API NO: 05045222600000

LOCATION:

SHL: 273' FSL 1039' FVL
 BHL: 736' FNL 2206' FVL

ELEVATIONS:

KB 5165 FT
 DF
 GL 5141 FT

S13 T7S R96W
 PAD: GM 24-12
 H&P 318

SEC 13 TWP 7S RGE 96W

DATE 15 May 2014

