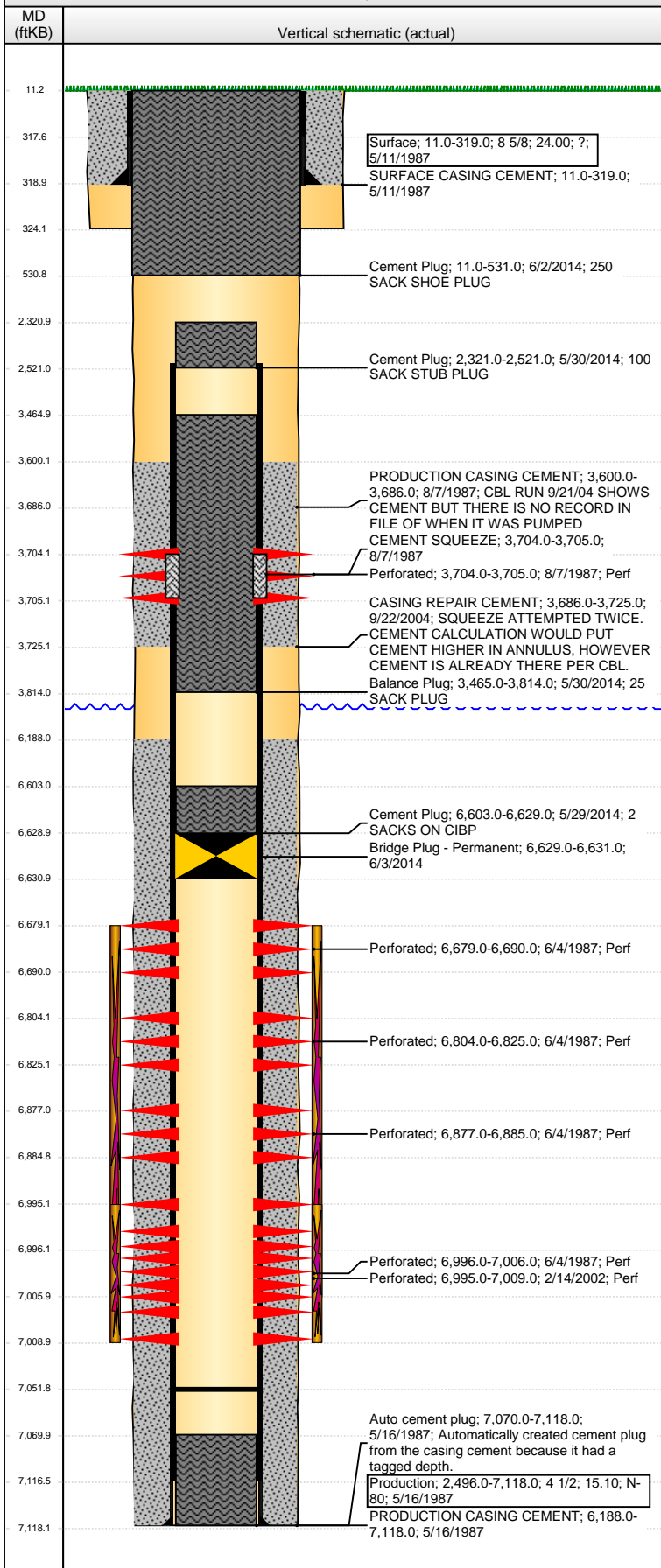


**Well Name: HERMAN E24-05**

VERTICAL - ORIGINAL HOLE, 7/9/2014 8:18:17 AM



## Well Header

API	Business Unit	District	Well Config
05-123-13431	WATTENBERG	15	VERTICAL
Original KB Elevation (ft)	KB - GL / MSL (ftKB)	Spud Date	P & A Date
4,698.00	11.00	5/11/1987	6/2/2014

## Comment

HIC @ 3710, CASING REPAIR W/ CEMENT TD DISCREPANCY - COMPLETION RPT AND LOGS HAVE TD @ 7117' - DAILY REPORTS HAVE TD @ 7118' SLIDING SLEEVE @ 3838, COULD NOT OPEN

## Directions To Well

## Congressional Location

Quarter 1	Quarter 2	Quarter 3	Quarter 4	Section	Township	Twnshp N...	Range	Rng E/W Dir
		SW	NW	24	6	N	65	W

## Bottom Hole Location

North-South Distance (ft)	From N or S Line	East-West Distance (ft)	From E or W Line

## Plug Back Total Depths

Date	Depth (ftKB)	Method	Com
6/4/1987	7,070.0	CASED HOLE LOG	DEPTH LOGGER ON CBL
9/20/2004	7,052.0	TAG	TAGGED TO SET PLUG

## Wellbore Sections

Section Des	Size (in)	Act Top, MD (ftKB)	Act Btm, MD (ftKB)
SURFACE	12 1/4	11.0	324.0
PRODUCTION	7 7/8	324.0	7,118.0

## Zone Statuses

Zone Name	Status Date	Status	Job
CODELL	6/17/1987	PR	DRILLING/COMPLETION - ORIGINAL, 5/11/1987 00:00
CODELL	4/1/2002	PR	RE-FRAC, 2/7/2002 00:00
CODELL	1/7/2005	PR	CASING REPAIR, 9/17/2004 00:00
CODELL	5/29/2014	P&A	ABANDON WELL, 5/29/2014 06:00
NIOBRARA	6/17/1987	PR	DRILLING/COMPLETION - ORIGINAL, 5/11/1987 00:00
NIOBRARA	1/7/2005	PR	CASING REPAIR, 9/17/2004 00:00
NIOBRARA	5/29/2014	P&A	ABANDON WELL, 5/29/2014 06:00

## Casing Strings

### Surface, 319.0ftKB

Casing Description	Run Date	OD (in)	Wt/Len (l...)	Grade	Top, MD (ft...)	MD (ftKB)
Surface	5/11/1987	8 5/8	24.00	?	11.0	319.0

### Production, 7,118.0ftKB

Casing Description	Run Date	OD (in)	Wt/Len (l...)	Grade	Top, MD (ft...)	MD (ftKB)
Production	5/16/1987	4 1/2	15.10	N-80	11.0	7,118.0

## Cement

Description	Top Depth (ftKB)	Bottom Depth (ftKB)
SURFACE CASING CEMENT	11.0	319.0
PRODUCTION CASING CEMENT	6,188.0	7,118.0
CEMENT SQUEEZE	3,704.0	3,705.0
PRODUCTION CASING CEMENT	3,600.0	3,686.0
CASING REPAIR CEMENT	3,686.0	3,725.0
Cement Plug	6,603.0	6,629.0
Balance Plug	3,465.0	3,814.0
Cement Plug	2,321.0	2,521.0
Cement Plug	11.0	531.0

## Tubing Components

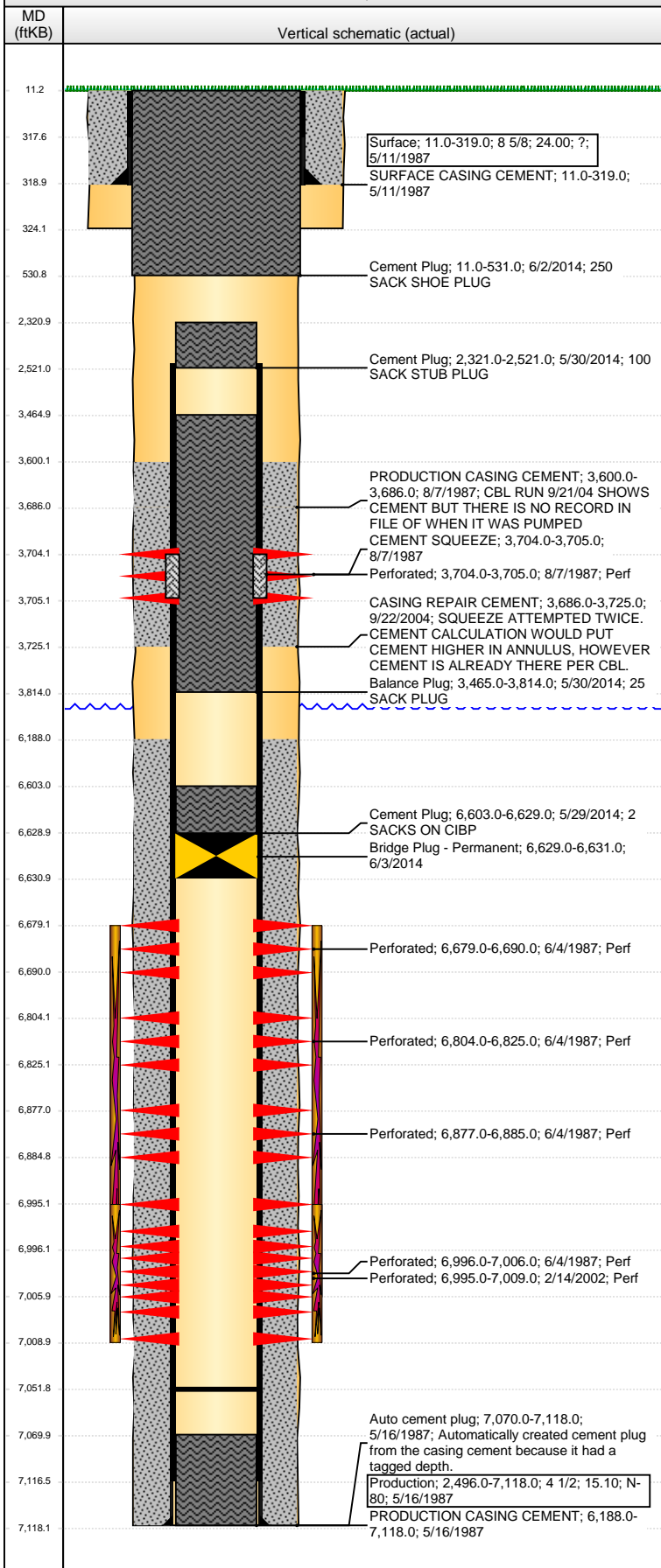
Item Des	OD (in)	Wt (lb/ft)	Grade	Jts	Len (ft)	Btm (ftKB)	Btm (TVD) (ftKB)

## Perforation Data

Zone	Bnch/St g	Entered Shot Total	Top (ftKB)	Btm (ftKB)	Date
NIOBRARA, ORIGINAL HOLE	A	4	3,704.00	3,705.00	8/7/1987
		33	6,679.00	6,690.00	6/4/1987

**Well Name: HERMAN E24-05**

VERTICAL - ORIGINAL HOLE, 7/9/2014 8:18:20 AM



## Perforation Data

Zone	Brnch/St g	Entered Shot Total	Top (ftKB)	Btm (ftKB)	Date
NIOBRARA, ORIGINAL HOLE	B	105	6,804.00	6,825.00	6/4/1987
NIOBRARA, ORIGINAL HOLE	C	16	6,877.00	6,885.00	6/4/1987
CODELL, ORIGINAL HOLE		56	6,995.00	7,009.00	2/14/2002
CODELL, ORIGINAL HOLE		50	6,996.00	7,006.00	6/4/1987

## Stimulations & Treatments

Date	Zone	Primary Job Type
6/5/1987	NIOBRARA-CODELL, ORIGINAL HOLE	DRILLING/COMPLETION - ORIGINAL
Technical Result	Tech Result Details	Tech Result Note

Comment  
LIMITED ENTRY

Date	Zone	Primary Job Type
3/5/2002	CODELL, ORIGINAL HOLE	RE-FRAC
Technical Result	Tech Result Details	Tech Result Note

Comment

## Other In Hole

Run Date	Des	OD (in)	Top (ftKB)	Btm (ftKB)
6/3/2014	Bridge Plug - Permanent	3.99	6,629.0	6,631.0

## Logs

Date	Type	Top, MD (ftKB)	Btm, MD (ftKB)
5/16/1987	COMPENSATED DENSITY	3,550.0	7,047.0
5/16/1987	COMPENSATED NEUTRON	3,550.0	7,111.0
5/16/1987	INDUCTION	317.0	7,090.0
5/16/1987	MICRO LOG	3,550.0	7,022.0
6/4/1987	CEMENT BOND	3,580.0	7,061.0
9/21/2004	CEMENT BOND	2,956.0	3,957.0
4/5/2013	GYRO	11.0	6,950.0