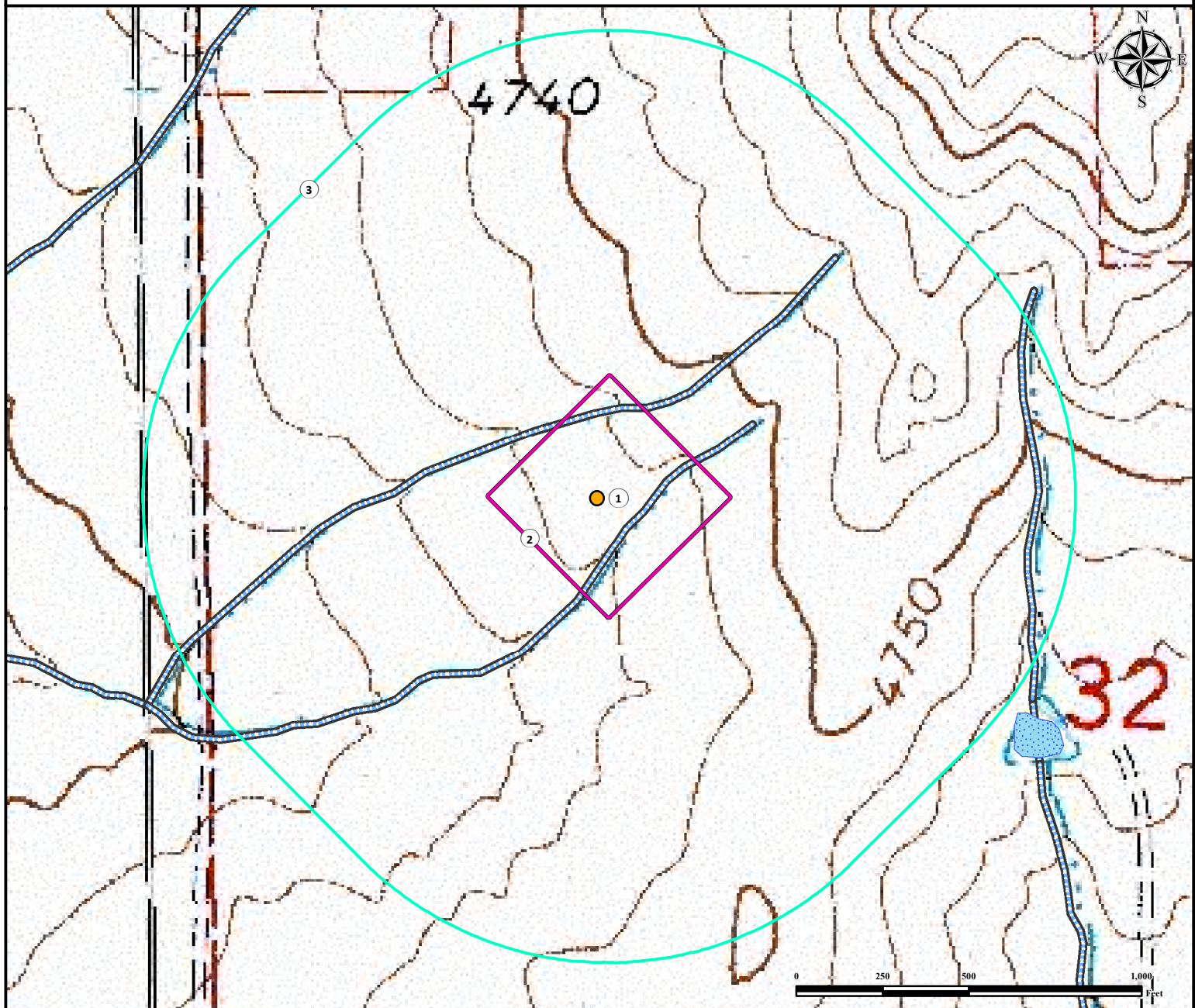


Hydrology Map






HARMON 12-32-16-53

SW¼NW¼ SECTION 32, TOWNSHIP 16 SOUTH, RANGE 53 WEST OF THE 6TH PRINCIPAL MERIDIAN



1. Proposed Well HARMON 12-32-16-53.
2. Operational Disturbance Area.
3. 1000' Radius.
4. Ephemeral Drainage is $\pm 118'$ SE, $\pm 241'$ NW, and 1254' E (dry at time of survey).

Legend

- | | | |
|--|--|--|
|  Proposed Well |  Disturbance Area |  Ephemeral Drainage |
|  1000' Radius |  Pond | |

Reference Location

** HARMON 12-32-16-53 **

Lat: 38.619802° Long: -103.370882° (NAD83)
Elevation: 4737 Feet



Use our resources to find yours!
www.petro-fs.com
(303) 928-7128

Field Date: 03/25/2014
Drafting Date: 07/08/2014
Drafted by: SMG
Checked by: DRF
Revision:

Data Sources:
- Topo courtesy USGS
- Water features courtesy of NHD

Prepared
for:

**PIONEER NATURAL
RESOURCES USA INC.**