

Synergy Resources

Well Name: **SRC Kelly Farms 12-4-3CHZ**

Surface Location: SRC Kelly Farms Pad Sec.4-T5N-R66W

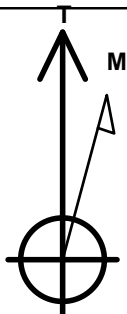
North American Datum 1983 , US State Plane 1983 , Colorado Northern Zone

Ground Elevation: 4751.0

+N/-S	+E/-W	Northing	Easting	Latitude	Longitude	Slot
0.0	0.0	1400833.69	3199156.62	40.431485	-104.784582	
Ensign Rig #131 - RKB -13.5' WELL @ 4764.5ft (Ensign Rig #131 - RKB -13.5')						

WELLBORE TARGET DETAILS

Name	TVD	+N/-S	+E/-W	Shape
SHL 2144'FNL & 2375'FWL, Sec. 4	1.0	0.0	0.0	Point
BHL 2077'FNL & 2118'FWL, Sec. 3	7232.0	68.7	5097.6	Point
Landing Pt. 2077'FNL & 2223'FEL, Sec.4	7232.0	74.4	749.2	Point



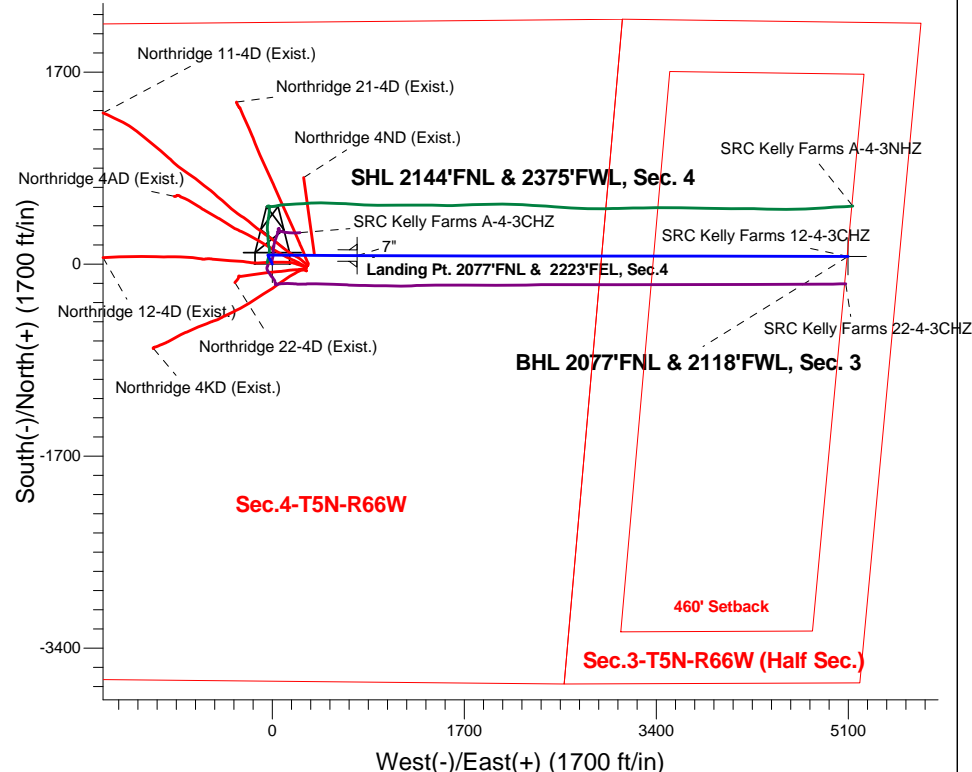
Azimuths to True North
Magnetic North: 8.47°

Magnetic Field
Strength: 52829.1nT
Dip Angle: 66.97°
Date: 6/19/2014
Model: IGRF2010

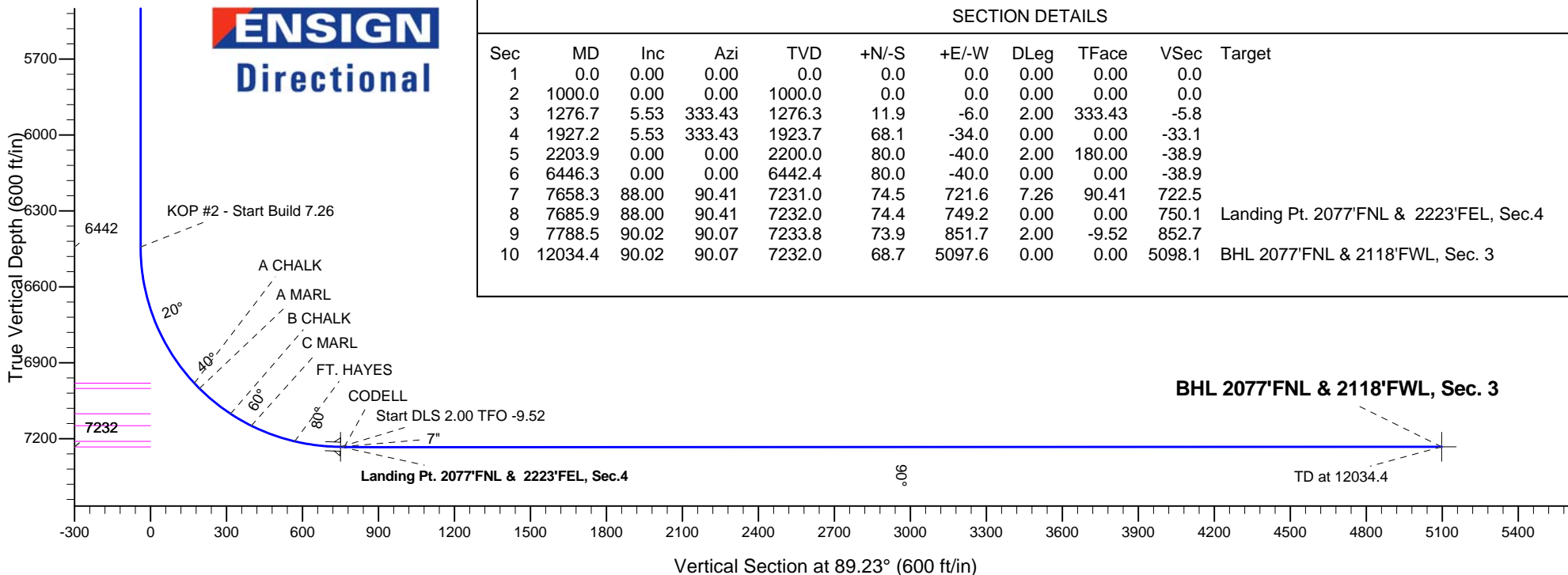
SRC Kelly Farms Pad Sec.4-T5N-R66W
SRC Kelly Farms 12-4-3CHZ
Plan #3 (6-19-14)R
7:06, June 19 2014

ANNOTATIONS

TVD	MD	Annotation
1000.0	1000.0	KOP #1 - Start Build 2.00
1923.7	1927.2	Start Drop -2.00
6442.4	6446.3	KOP #2 - Start Build 7.26
7232.0	7685.9	Start DLS 2.00 TFO -9.52
7232.0	12034.4	TD at 12034.4

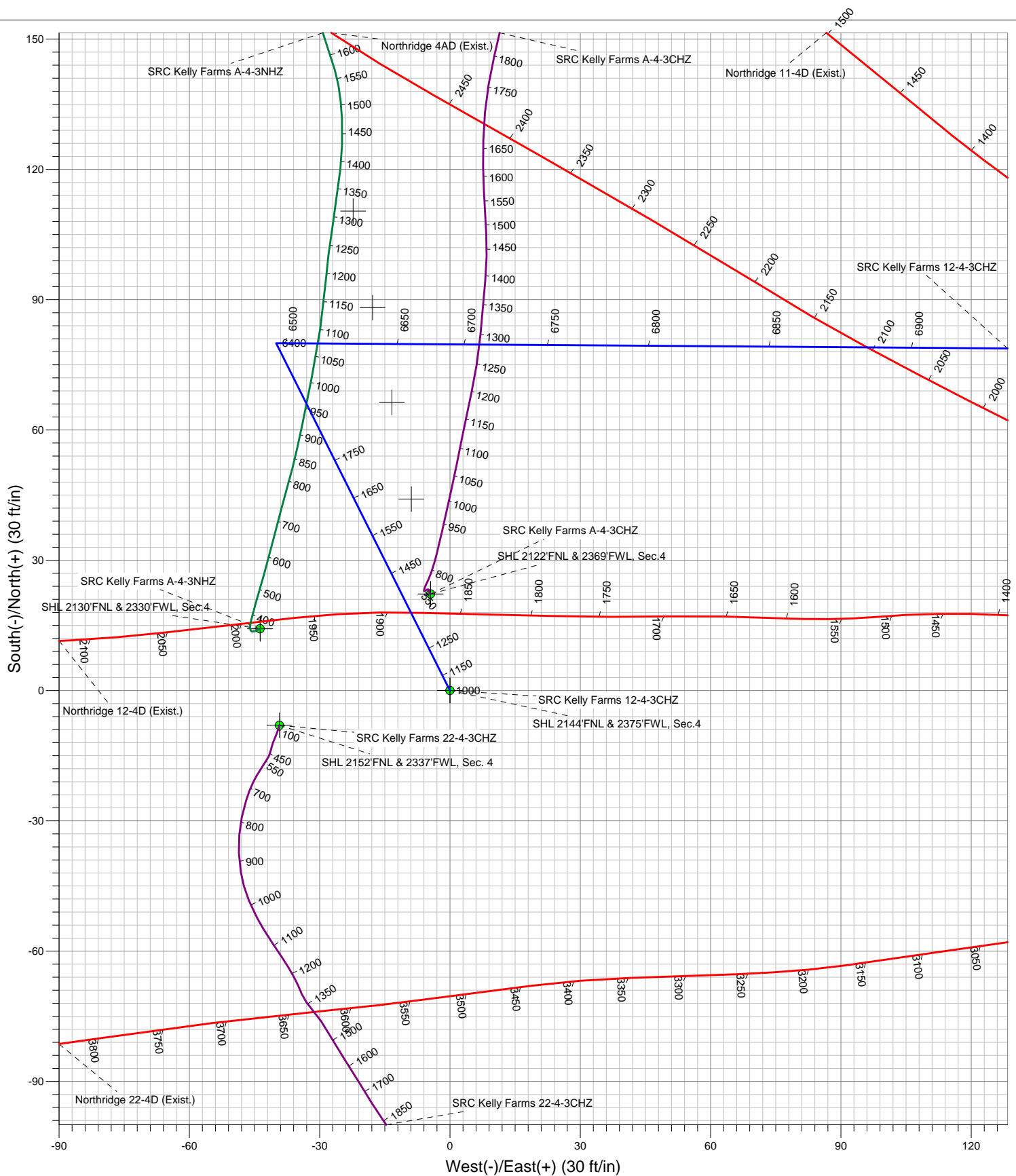
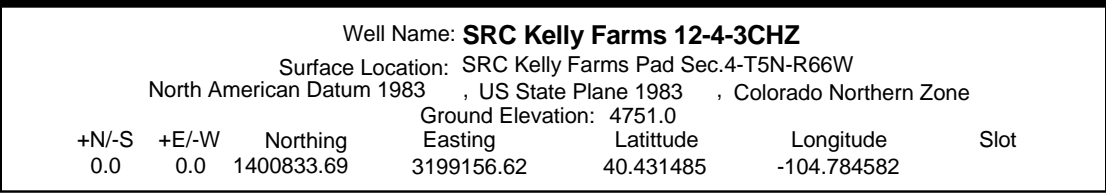


ENSIGN
Directional



SECTION DETAILS

Sec	MD	Inc	Azi	TVD	+N/-S	+E/-W	DLeg	TFace	VSec	Target
1	0.0	0.00	0.00	0.0	0.0	0.0	0.00	0.00	0.0	
2	1000.0	0.00	0.00	1000.0	0.0	0.0	0.00	0.00	0.0	
3	1276.7	5.53	333.43	1276.3	11.9	-6.0	2.00	333.43	-5.8	
4	1927.2	5.53	333.43	1923.7	68.1	-34.0	0.00	0.00	-33.1	
5	2203.9	0.00	0.00	2200.0	80.0	-40.0	2.00	180.00	-38.9	
6	6446.3	0.00	0.00	6442.4	80.0	-40.0	0.00	0.00	-38.9	
7	7658.3	88.00	90.41	7231.0	74.5	721.6	7.26	90.41	722.5	
8	7685.9	88.00	90.41	7232.0	74.4	749.2	0.00	0.00	750.1	Landing Pt. 2077'FNL & 2223'FEL, Sec.4
9	7788.5	90.02	90.07	7233.8	73.9	851.7	2.00	-9.52	852.7	
10	12034.4	90.02	90.07	7232.0	68.7	5097.6	0.00	0.00	5098.1	BHL 2077'FNL & 2118'FWL, Sec. 3





Directional

Synergy Resources

SEC.4-T5N-R66W

SRC Kelly Farms Pad Sec.4-T5N-R66W

SRC Kelly Farms 12-4-3CHZ

Wellbore #1

Plan: Plan #3 (6-19-14)R

Standard Planning Report

19 June, 2014

Database:	Landmark	Local Co-ordinate Reference:	Well SRC Kelly Farms 12-4-3CHZ
Company:	Synergy Resources	TVD Reference:	WELL @ 4764.5ft (Ensign Rig #131 - RKB -13.5')
Project:	SEC.4-T5N-R66W	MD Reference:	WELL @ 4764.5ft (Ensign Rig #131 - RKB -13.5')
Site:	SRC Kelly Farms Pad Sec.4-T5N-R66W	North Reference:	True
Well:	SRC Kelly Farms 12-4-3CHZ	Survey Calculation Method:	Minimum Curvature
Wellbore:	Wellbore #1		
Design:	Plan #3 (6-19-14)R		

Project	SEC.4-T5N-R66W, Weld County, Colorado		
Map System:	US State Plane 1983	System Datum:	Mean Sea Level
Geo Datum:	North American Datum 1983		Using Well Reference Point
Map Zone:	Colorado Northern Zone		Using geodetic scale factor

Site						SRC Kelly Farms Pad Sec.4-T5N-R66W											
Site Position:						Northing:			1,400,891.57 ft			Latitude:			40.431645		
From:			Lat/Long			Easting:			3,199,103.54 ft			Longitude:			-104.784771		
Position Uncertainty:			0.0 ft			Slot Radius:			"			Grid Convergence:			0.46 °		

Well	SRC Kelly Farms 12-4-3CHZ					
Well Position	+N/-S	-58.3 ft	Northing:	1,400,833.69 ft	Latitude:	40.431485
	+E/-W	52.6 ft	Easting:	3,199,156.62 ft	Longitude:	-104.784582
Position Uncertainty		0.0 ft	Wellhead Elevation:	ft	Ground Level:	4,751.0 ft

Wellbore	Wellbore #1				
Magnetics	Model Name	Sample Date	Declination (°)	Dip Angle (°)	Field Strength (nT)
	IGRF2010	6/19/2014	8.47	66.97	52,829

Design	Plan #3 (6-19-14)R			
Audit Notes:				
Version:	Phase:	PROTOTYPE	Tie On Depth:	0.0
Vertical Section:	Depth From (TVD) (ft)	+N/-S (ft)	+E/-W (ft)	Direction (°)
	0.0	0.0	0.0	89.23

Plan Sections										
Measured Depth (ft)	Inclination (°)	Azimuth (°)	Vertical Depth (ft)	+N/-S (ft)	+E/-W (ft)	Dogleg Rate (°/100ft)	Build Rate (°/100ft)	Turn Rate (°/100ft)	TFO (°)	Target
0.0	0.00	0.00	0.0	0.0	0.0	0.00	0.00	0.00	0.00	
1,000.0	0.00	0.00	1,000.0	0.0	0.0	0.00	0.00	0.00	0.00	
1,276.7	5.53	333.43	1,276.3	11.9	-6.0	2.00	2.00	0.00	333.43	
1,927.2	5.53	333.43	1,923.7	68.1	-34.0	0.00	0.00	0.00	0.00	
2,203.9	0.00	0.00	2,200.0	80.0	-40.0	2.00	-2.00	0.00	180.00	
6,446.3	0.00	0.00	6,442.4	80.0	-40.0	0.00	0.00	0.00	0.00	
7,658.3	88.00	90.41	7,231.0	74.5	721.6	7.26	7.26	0.00	90.41	
7,685.9	88.00	90.41	7,232.0	74.4	749.2	0.00	0.00	0.00	0.00	Landing Pt. 2077'Ft
7,788.5	90.02	90.07	7,233.8	73.9	851.7	2.00	1.97	-0.33	-9.52	
12,034.4	90.02	90.07	7,232.0	68.7	5,097.6	0.00	0.00	0.00	0.00	BHL 2077'FNL & 21

Database:	Landmark	Local Co-ordinate Reference:	Well SRC Kelly Farms 12-4-3CHZ
Company:	Synergy Resources	TVD Reference:	WELL @ 4764.5ft (Ensign Rig #131 - RKB -13.5')
Project:	SEC.4-T5N-R66W	MD Reference:	WELL @ 4764.5ft (Ensign Rig #131 - RKB -13.5')
Site:	SRC Kelly Farms Pad Sec.4-T5N-R66W	North Reference:	True
Well:	SRC Kelly Farms 12-4-3CHZ	Survey Calculation Method:	Minimum Curvature
Wellbore:	Wellbore #1		
Design:	Plan #3 (6-19-14)R		

Planned Survey									
Measured Depth (ft)	Inclination (°)	Azimuth (°)	Vertical Depth (ft)	+N/-S (ft)	+E/-W (ft)	Vertical Section (ft)	Dogleg Rate (°/100ft)	Build Rate (°/100ft)	Turn Rate (°/100ft)
0.0	0.00	0.00	0.0	0.0	0.0	0.0	0.00	0.00	0.00
1.0	0.00	0.00	1.0	0.0	0.0	0.0	0.00	0.00	0.00
SHL 2144'FNL & 2375'FWL, Sec. 4									
100.0	0.00	0.00	100.0	0.0	0.0	0.0	0.00	0.00	0.00
200.0	0.00	0.00	200.0	0.0	0.0	0.0	0.00	0.00	0.00
300.0	0.00	0.00	300.0	0.0	0.0	0.0	0.00	0.00	0.00
400.0	0.00	0.00	400.0	0.0	0.0	0.0	0.00	0.00	0.00
500.0	0.00	0.00	500.0	0.0	0.0	0.0	0.00	0.00	0.00
600.0	0.00	0.00	600.0	0.0	0.0	0.0	0.00	0.00	0.00
700.0	0.00	0.00	700.0	0.0	0.0	0.0	0.00	0.00	0.00
800.0	0.00	0.00	800.0	0.0	0.0	0.0	0.00	0.00	0.00
900.0	0.00	0.00	900.0	0.0	0.0	0.0	0.00	0.00	0.00
1,000.0	0.00	0.00	1,000.0	0.0	0.0	0.0	0.00	0.00	0.00
KOP #1 - Start Build 2.00									
1,100.0	2.00	333.43	1,100.0	1.6	-0.8	-0.8	2.00	2.00	0.00
1,200.0	4.00	333.43	1,199.8	6.2	-3.1	-3.0	2.00	2.00	0.00
1,276.7	5.53	333.43	1,276.3	11.9	-6.0	-5.8	2.00	2.00	0.00
1,300.0	5.53	333.43	1,299.5	14.0	-7.0	-6.8	0.00	0.00	0.00
1,400.0	5.53	333.43	1,399.0	22.6	-11.3	-11.0	0.00	0.00	0.00
1,500.0	5.53	333.43	1,498.5	31.2	-15.6	-15.2	0.00	0.00	0.00
1,600.0	5.53	333.43	1,598.1	39.8	-19.9	-19.4	0.00	0.00	0.00
1,700.0	5.53	333.43	1,697.6	48.5	-24.2	-23.6	0.00	0.00	0.00
1,800.0	5.53	333.43	1,797.1	57.1	-28.5	-27.8	0.00	0.00	0.00
1,900.0	5.53	333.43	1,896.7	65.7	-32.9	-32.0	0.00	0.00	0.00
1,927.2	5.53	333.43	1,923.7	68.1	-34.0	-33.1	0.00	0.00	0.00
Start Drop -2.00									
2,000.0	4.08	333.43	1,996.3	73.5	-36.8	-35.8	2.00	-2.00	0.00
2,100.0	2.08	333.43	2,096.1	78.3	-39.2	-38.1	2.00	-2.00	0.00
2,200.0	0.08	333.43	2,196.1	80.0	-40.0	-38.9	2.00	-2.00	0.00
2,203.9	0.00	0.00	2,200.0	80.0	-40.0	-38.9	2.00	-2.00	0.00
2,300.0	0.00	0.00	2,296.1	80.0	-40.0	-38.9	0.00	0.00	0.00
2,400.0	0.00	0.00	2,396.1	80.0	-40.0	-38.9	0.00	0.00	0.00
2,500.0	0.00	0.00	2,496.1	80.0	-40.0	-38.9	0.00	0.00	0.00
2,600.0	0.00	0.00	2,596.1	80.0	-40.0	-38.9	0.00	0.00	0.00
2,700.0	0.00	0.00	2,696.1	80.0	-40.0	-38.9	0.00	0.00	0.00
2,800.0	0.00	0.00	2,796.1	80.0	-40.0	-38.9	0.00	0.00	0.00
2,900.0	0.00	0.00	2,896.1	80.0	-40.0	-38.9	0.00	0.00	0.00
3,000.0	0.00	0.00	2,996.1	80.0	-40.0	-38.9	0.00	0.00	0.00
3,100.0	0.00	0.00	3,096.1	80.0	-40.0	-38.9	0.00	0.00	0.00
3,200.0	0.00	0.00	3,196.1	80.0	-40.0	-38.9	0.00	0.00	0.00
3,300.0	0.00	0.00	3,296.1	80.0	-40.0	-38.9	0.00	0.00	0.00
3,400.0	0.00	0.00	3,396.1	80.0	-40.0	-38.9	0.00	0.00	0.00
3,500.0	0.00	0.00	3,496.1	80.0	-40.0	-38.9	0.00	0.00	0.00
3,600.0	0.00	0.00	3,596.1	80.0	-40.0	-38.9	0.00	0.00	0.00
3,700.0	0.00	0.00	3,696.1	80.0	-40.0	-38.9	0.00	0.00	0.00
3,800.0	0.00	0.00	3,796.1	80.0	-40.0	-38.9	0.00	0.00	0.00
3,900.0	0.00	0.00	3,896.1	80.0	-40.0	-38.9	0.00	0.00	0.00
4,000.0	0.00	0.00	3,996.1	80.0	-40.0	-38.9	0.00	0.00	0.00
4,100.0	0.00	0.00	4,096.1	80.0	-40.0	-38.9	0.00	0.00	0.00
4,200.0	0.00	0.00	4,196.1	80.0	-40.0	-38.9	0.00	0.00	0.00
4,300.0	0.00	0.00	4,296.1	80.0	-40.0	-38.9	0.00	0.00	0.00
4,400.0	0.00	0.00	4,396.1	80.0	-40.0	-38.9	0.00	0.00	0.00

Database:	Landmark	Local Co-ordinate Reference:	Well SRC Kelly Farms 12-4-3CHZ
Company:	Synergy Resources	TVD Reference:	WELL @ 4764.5ft (Ensign Rig #131 - RKB -13.5')
Project:	SEC.4-T5N-R66W	MD Reference:	WELL @ 4764.5ft (Ensign Rig #131 - RKB -13.5')
Site:	SRC Kelly Farms Pad Sec.4-T5N-R66W	North Reference:	True
Well:	SRC Kelly Farms 12-4-3CHZ	Survey Calculation Method:	Minimum Curvature
Wellbore:	Wellbore #1		
Design:	Plan #3 (6-19-14)R		

Planned Survey									
Measured Depth (ft)	Inclination (°)	Azimuth (°)	Vertical Depth (ft)	+N/-S (ft)	+E/-W (ft)	Vertical Section (ft)	Dogleg Rate (°/100ft)	Build Rate (°/100ft)	Turn Rate (°/100ft)
4,500.0	0.00	0.00	4,496.1	80.0	-40.0	-38.9	0.00	0.00	0.00
4,600.0	0.00	0.00	4,596.1	80.0	-40.0	-38.9	0.00	0.00	0.00
4,700.0	0.00	0.00	4,696.1	80.0	-40.0	-38.9	0.00	0.00	0.00
4,800.0	0.00	0.00	4,796.1	80.0	-40.0	-38.9	0.00	0.00	0.00
4,900.0	0.00	0.00	4,896.1	80.0	-40.0	-38.9	0.00	0.00	0.00
5,000.0	0.00	0.00	4,996.1	80.0	-40.0	-38.9	0.00	0.00	0.00
5,100.0	0.00	0.00	5,096.1	80.0	-40.0	-38.9	0.00	0.00	0.00
5,200.0	0.00	0.00	5,196.1	80.0	-40.0	-38.9	0.00	0.00	0.00
5,300.0	0.00	0.00	5,296.1	80.0	-40.0	-38.9	0.00	0.00	0.00
5,400.0	0.00	0.00	5,396.1	80.0	-40.0	-38.9	0.00	0.00	0.00
5,500.0	0.00	0.00	5,496.1	80.0	-40.0	-38.9	0.00	0.00	0.00
5,600.0	0.00	0.00	5,596.1	80.0	-40.0	-38.9	0.00	0.00	0.00
5,700.0	0.00	0.00	5,696.1	80.0	-40.0	-38.9	0.00	0.00	0.00
5,800.0	0.00	0.00	5,796.1	80.0	-40.0	-38.9	0.00	0.00	0.00
5,900.0	0.00	0.00	5,896.1	80.0	-40.0	-38.9	0.00	0.00	0.00
6,000.0	0.00	0.00	5,996.1	80.0	-40.0	-38.9	0.00	0.00	0.00
6,100.0	0.00	0.00	6,096.1	80.0	-40.0	-38.9	0.00	0.00	0.00
6,200.0	0.00	0.00	6,196.1	80.0	-40.0	-38.9	0.00	0.00	0.00
6,300.0	0.00	0.00	6,296.1	80.0	-40.0	-38.9	0.00	0.00	0.00
6,400.0	0.00	0.00	6,396.1	80.0	-40.0	-38.9	0.00	0.00	0.00
6,446.3	0.00	0.00	6,442.4	80.0	-40.0	-38.9	0.00	0.00	0.00
KOP #2 - Start Build 7.26									
6,500.0	3.90	90.41	6,496.1	80.0	-38.2	-37.1	7.27	7.27	0.00
6,600.0	11.16	90.41	6,595.1	79.9	-25.1	-24.0	7.26	7.26	0.00
6,700.0	18.42	90.41	6,691.8	79.7	0.4	1.5	7.26	7.26	0.00
6,800.0	25.68	90.41	6,784.4	79.4	38.0	39.0	7.26	7.26	0.00
6,900.0	32.94	90.41	6,871.5	79.1	86.9	87.9	7.26	7.26	0.00
7,000.0	40.20	90.41	6,951.8	78.7	146.4	147.5	7.26	7.26	0.00
7,038.4	42.99	90.41	6,980.5	78.5	171.9	173.0	7.26	7.26	0.00
A CHALK									
7,067.6	45.11	90.41	7,001.5	78.3	192.3	193.3	7.26	7.26	0.00
A MARL									
7,100.0	47.46	90.41	7,023.9	78.2	215.6	216.7	7.26	7.26	0.00
7,200.0	54.72	90.41	7,086.6	77.6	293.4	294.4	7.26	7.26	0.00
7,226.4	56.64	90.41	7,101.5	77.5	315.2	316.2	7.26	7.26	0.00
B CHALK									
7,300.0	61.99	90.41	7,139.1	77.0	378.5	379.5	7.26	7.26	0.00
7,320.6	63.48	90.41	7,148.5	76.9	396.8	397.8	7.26	7.26	0.00
C MARL									
7,400.0	69.25	90.41	7,180.3	76.4	469.5	470.5	7.26	7.26	0.00
7,500.0	76.51	90.41	7,209.7	75.7	565.0	566.0	7.26	7.26	0.00
7,503.3	76.75	90.41	7,210.5	75.6	568.2	569.2	7.26	7.26	0.00
FT. HAYES									
7,600.0	83.77	90.41	7,226.9	75.0	663.4	664.4	7.26	7.26	0.00
7,658.3	88.00	90.41	7,231.0	74.5	721.6	722.5	7.26	7.26	0.00
7,685.9	88.00	90.41	7,232.0	74.4	749.2	750.1	0.00	0.00	0.00
Start DLS 2.00 TFO -9.52 - 7" - Landing Pt. 2077'FNL & 2223'FEL, Sec.4									
7,700.0	88.28	90.36	7,232.5	74.3	763.3	764.2	2.00	1.97	-0.33
7,701.4	88.28	90.36	7,232.5	74.2	764.6	765.6	0.00	0.00	0.00
CODELL									
7,788.5	90.02	90.07	7,233.8	73.9	851.7	852.7	2.03	2.00	-0.34

Database:	Landmark	Local Co-ordinate Reference:	Well SRC Kelly Farms 12-4-3CHZ
Company:	Synergy Resources	TVD Reference:	WELL @ 4764.5ft (Ensign Rig #131 - RKB -13.5')
Project:	SEC.4-T5N-R66W	MD Reference:	WELL @ 4764.5ft (Ensign Rig #131 - RKB -13.5')
Site:	SRC Kelly Farms Pad Sec.4-T5N-R66W	North Reference:	True
Well:	SRC Kelly Farms 12-4-3CHZ	Survey Calculation Method:	Minimum Curvature
Wellbore:	Wellbore #1		
Design:	Plan #3 (6-19-14)R		

Planned Survey

Measured Depth (ft)	Inclination (°)	Azimuth (°)	Vertical Depth (ft)	+N/-S (ft)	+E/-W (ft)	Vertical Section (ft)	Dogleg Rate (°/100ft)	Build Rate (°/100ft)	Turn Rate (°/100ft)
7,800.0	90.02	90.07	7,233.8	73.9	863.2	864.2	0.00	0.00	0.00
7,900.0	90.02	90.07	7,233.7	73.8	963.2	964.1	0.00	0.00	0.00
8,000.0	90.02	90.07	7,233.7	73.7	1,063.2	1,064.1	0.00	0.00	0.00
8,100.0	90.02	90.07	7,233.6	73.5	1,163.2	1,164.1	0.00	0.00	0.00
8,200.0	90.02	90.07	7,233.6	73.4	1,263.2	1,264.1	0.00	0.00	0.00
8,300.0	90.02	90.07	7,233.6	73.3	1,363.2	1,364.1	0.00	0.00	0.00
8,400.0	90.02	90.07	7,233.5	73.2	1,463.2	1,464.1	0.00	0.00	0.00
8,500.0	90.02	90.07	7,233.5	73.0	1,563.2	1,564.1	0.00	0.00	0.00
8,600.0	90.02	90.07	7,233.4	72.9	1,663.2	1,664.1	0.00	0.00	0.00
8,700.0	90.02	90.07	7,233.4	72.8	1,763.2	1,764.1	0.00	0.00	0.00
8,800.0	90.02	90.07	7,233.3	72.7	1,863.2	1,864.1	0.00	0.00	0.00
8,900.0	90.02	90.07	7,233.3	72.5	1,963.2	1,964.0	0.00	0.00	0.00
9,000.0	90.02	90.07	7,233.3	72.4	2,063.2	2,064.0	0.00	0.00	0.00
9,100.0	90.02	90.07	7,233.2	72.3	2,163.2	2,164.0	0.00	0.00	0.00
9,200.0	90.02	90.07	7,233.2	72.2	2,263.2	2,264.0	0.00	0.00	0.00
9,300.0	90.02	90.07	7,233.1	72.1	2,363.2	2,364.0	0.00	0.00	0.00
9,400.0	90.02	90.07	7,233.1	71.9	2,463.2	2,464.0	0.00	0.00	0.00
9,500.0	90.02	90.07	7,233.1	71.8	2,563.2	2,564.0	0.00	0.00	0.00
9,600.0	90.02	90.07	7,233.0	71.7	2,663.2	2,664.0	0.00	0.00	0.00
9,700.0	90.02	90.07	7,233.0	71.6	2,763.2	2,764.0	0.00	0.00	0.00
9,800.0	90.02	90.07	7,232.9	71.4	2,863.2	2,863.9	0.00	0.00	0.00
9,900.0	90.02	90.07	7,232.9	71.3	2,963.2	2,963.9	0.00	0.00	0.00
10,000.0	90.02	90.07	7,232.8	71.2	3,063.2	3,063.9	0.00	0.00	0.00
10,100.0	90.02	90.07	7,232.8	71.1	3,163.2	3,163.9	0.00	0.00	0.00
10,200.0	90.02	90.07	7,232.8	70.9	3,263.2	3,263.9	0.00	0.00	0.00
10,300.0	90.02	90.07	7,232.7	70.8	3,363.2	3,363.9	0.00	0.00	0.00
10,400.0	90.02	90.07	7,232.7	70.7	3,463.2	3,463.9	0.00	0.00	0.00
10,500.0	90.02	90.07	7,232.6	70.6	3,563.2	3,563.9	0.00	0.00	0.00
10,600.0	90.02	90.07	7,232.6	70.4	3,663.2	3,663.9	0.00	0.00	0.00
10,700.0	90.02	90.07	7,232.6	70.3	3,763.2	3,763.8	0.00	0.00	0.00
10,800.0	90.02	90.07	7,232.5	70.2	3,863.2	3,863.8	0.00	0.00	0.00
10,900.0	90.02	90.07	7,232.5	70.1	3,963.2	3,963.8	0.00	0.00	0.00
11,000.0	90.02	90.07	7,232.4	70.0	4,063.2	4,063.8	0.00	0.00	0.00
11,100.0	90.02	90.07	7,232.4	69.8	4,163.2	4,163.8	0.00	0.00	0.00
11,200.0	90.02	90.07	7,232.3	69.7	4,263.2	4,263.8	0.00	0.00	0.00
11,300.0	90.02	90.07	7,232.3	69.6	4,363.2	4,363.8	0.00	0.00	0.00
11,400.0	90.02	90.07	7,232.3	69.5	4,463.2	4,463.8	0.00	0.00	0.00
11,500.0	90.02	90.07	7,232.2	69.3	4,563.2	4,563.8	0.00	0.00	0.00
11,600.0	90.02	90.07	7,232.2	69.2	4,663.2	4,663.7	0.00	0.00	0.00
11,700.0	90.02	90.07	7,232.1	69.1	4,763.2	4,763.7	0.00	0.00	0.00
11,800.0	90.02	90.07	7,232.1	69.0	4,863.2	4,863.7	0.00	0.00	0.00
11,900.0	90.02	90.07	7,232.1	68.8	4,963.2	4,963.7	0.00	0.00	0.00
12,000.0	90.02	90.07	7,232.0	68.7	5,063.2	5,063.7	0.00	0.00	0.00
12,034.4	90.02	90.07	7,232.0	68.7	5,097.6	5,098.1	0.00	0.00	0.00
BHL 2077'FNL & 2118'FWL, Sec. 3									

Database:	Landmark	Local Co-ordinate Reference:	Well SRC Kelly Farms 12-4-3CHZ
Company:	Synergy Resources	TVD Reference:	WELL @ 4764.5ft (Ensign Rig #131 - RKB -13.5')
Project:	SEC.4-T5N-R66W	MD Reference:	WELL @ 4764.5ft (Ensign Rig #131 - RKB -13.5')
Site:	SRC Kelly Farms Pad Sec.4-T5N-R66W	North Reference:	True
Well:	SRC Kelly Farms 12-4-3CHZ	Survey Calculation Method:	Minimum Curvature
Wellbore:	Wellbore #1		
Design:	Plan #3 (6-19-14)R		

Targets									
Target Name									
- hit/miss target	Dip Angle	Dip Dir.	TVD	+N-S	+E-W	Northing	Easting		
- Shape	(°)	(°)	(ft)	(ft)	(ft)	(ft)	(ft)	Latitude	Longitude
BHL 2077'FNL & 2111' - plan hits target center - Point	0.00	0.00	7,232.0	68.7	5,097.6	1,400,943.48	3,204,253.32	40.431672	-104.766271
SHL 2144'FNL & 2375' - plan hits target center - Point	0.00	0.00	1.0	0.0	0.0	1,400,833.71	3,199,156.62	40.431485	-104.784582
Landing Pt. 2077'FNL - plan hits target center - Point	0.00	0.00	7,232.0	74.4	749.2	1,400,914.08	3,199,905.12	40.431689	-104.781891

Casing Points					
Measured Depth (ft)	Vertical Depth (ft)	Name	Casing Diameter (")	Hole Diameter (")	
7,685.9	7,232.0	7"	7	7-1/2	

Formations					
Measured Depth (ft)	Vertical Depth (ft)	Name	Lithology	Dip (°)	Dip Direction (°)
7,038.4	6,980.5	A CHALK		0.00	
7,067.6	7,001.5	A MARL		0.00	
7,226.4	7,101.5	B CHALK		0.00	
7,320.6	7,148.5	C MARL		0.00	
7,503.3	7,210.5	FT. HAYES		0.00	
7,701.4	7,232.5	CODELL		0.00	

Plan Annotations				
Measured Depth (ft)	Vertical Depth (ft)	Local Coordinates +N/-S (ft)	+E/-W (ft)	Comment
1,000.0	1,000.0	0.0	0.0	KOP #1 - Start Build 2.00
1,927.2	1,923.7	68.1	-34.0	Start Drop -2.00
6,446.3	6,442.4	80.0	-40.0	KOP #2 - Start Build 7.26
7,685.9	7,232.0	74.4	749.2	Start DLS 2.00 TFO -9.52
12,034.4	7,232.0	68.7	5,097.6	TD at 12034.4



Directional

Synergy Resources

SEC.4-T5N-R66W

SRC Kelly Farms Pad Sec.4-T5N-R66W

SRC Kelly Farms 12-4-3CHZ

Wellbore #1

Plan #3 (6-19-14)R

Anticollision Report

19 June, 2014

Company:	Synergy Resources	Local Co-ordinate Reference:	Well SRC Kelly Farms 12-4-3CHZ
Project:	SEC.4-T5N-R66W	TVD Reference:	WELL @ 4764.5ft (Ensign Rig #131 - RKB -13.5')
Reference Site:	SRC Kelly Farms Pad Sec.4-T5N-R66W	MD Reference:	WELL @ 4764.5ft (Ensign Rig #131 - RKB -13.5')
Site Error:	0.0ft	North Reference:	True
Reference Well:	SRC Kelly Farms 12-4-3CHZ	Survey Calculation Method:	Minimum Curvature
Well Error:	0.0ft	Output errors are at	2.00 sigma
Reference Wellbore	Wellbore #1	Database:	Landmark
Reference Design:	Plan #3 (6-19-14)R	Offset TVD Reference:	Offset Datum

Offset Design Northridge Pad Sec.4-T5N-R66W - Northridge 11-4D (Exist.) - Wellbore #1 - Wellbore #1													Offset Site Error: 0.0ft
Survey Program: 147-MWD													Offset Well Error: 0.0ft
Reference	Offset	Semi Major Axis		Distance		Warning							
Measured Depth (ft)	Vertical Depth (ft)	Measured Depth (ft)	Vertical Depth (ft)	Reference (ft)	Offset (ft)	Highside Toolface (°)	Offset Wellbore Centre +N/-S (ft)	+E/-W (ft)	Between Centres (ft)	Between Ellipses (ft)	Minimum Separation (ft)	Separation Factor	
0.0	0.0	0.0	0.0	0.0	0.0	91.87	-10.2	311.8	312.2				
100.0	100.0	84.4	84.4	0.1	0.1	91.96	-10.7	312.3	312.5	312.3	0.21	1,489.132	
200.0	200.0	185.8	185.8	0.3	0.2	92.23	-12.2	314.0	314.3	313.7	0.58	537.616	
300.0	300.0	297.8	297.7	0.6	0.5	92.16	-11.8	312.8	313.1	312.1	1.04	300.855	
400.0	400.0	406.5	406.3	0.8	0.7	91.42	-7.6	308.1	308.7	307.2	1.51	204.378	
500.0	500.0	518.8	517.9	1.0	1.0	89.87	0.7	299.6	301.0	299.0	2.01	150.070	
600.0	600.0	627.4	625.2	1.2	1.3	87.56	12.3	287.2	289.8	287.3	2.51	115.436	
700.0	700.0	730.0	726.0	1.5	1.7	84.97	24.0	272.6	276.2	273.2	3.00	92.054	
800.0	800.0	826.5	821.0	1.7	2.1	82.40	34.6	259.2	263.5	260.1	3.46	76.223	
900.0	900.0	931.7	924.1	1.9	2.5	78.71	48.6	243.4	250.7	246.7	3.98	62.999	
1,000.0	1,000.0	1,042.1	1,031.5	2.1	3.0	74.42	61.9	221.8	234.3	229.7	4.56	51.336	
1,100.0	1,100.0	1,144.9	1,130.5	2.4	3.5	96.65	74.8	197.2	215.2	209.6	5.59	38.484	
1,200.0	1,199.8	1,243.5	1,224.3	2.6	4.1	91.70	89.7	171.0	196.4	190.0	6.39	30.743	
1,276.7	1,276.3	1,317.8	1,294.2	2.8	4.6	87.04	103.5	149.8	183.1	176.0	7.08	25.840	
1,300.0	1,299.5	1,340.3	1,315.2	2.8	4.7	85.43	107.9	143.3	179.3	172.0	7.31	24.526	
1,400.0	1,399.0	1,433.1	1,401.6	3.1	5.4	77.49	127.7	115.8	165.5	157.2	8.33	19.876	
1,500.0	1,498.5	1,527.9	1,488.8	3.3	6.1	67.21	151.3	86.9	158.0	148.6	9.40	16.804	
1,581.9	1,580.1	1,606.3	1,560.6	3.5	6.7	58.02	170.9	62.4	155.9	145.6	10.23	15.237 CC	
1,600.0	1,598.1	1,623.4	1,576.2	3.6	6.9	55.91	175.2	56.8	156.0	145.6	10.40	15.004 ES	
1,700.0	1,697.6	1,716.2	1,660.3	3.8	7.7	44.41	199.4	25.8	161.1	149.9	11.20	14.392 SF	
1,800.0	1,797.1	1,813.7	1,748.4	4.1	8.5	33.18	224.6	-7.5	172.9	161.2	11.75	14.717	
1,900.0	1,896.7	1,906.1	1,831.8	4.3	9.3	23.68	247.2	-40.3	189.3	177.2	12.10	15.646	
1,927.2	1,923.7	1,930.6	1,853.8	4.4	9.5	21.38	253.4	-49.1	194.9	182.7	12.17	16.009	
2,000.0	1,996.3	1,995.4	1,911.9	4.6	10.1	15.98	270.3	-72.2	212.8	200.4	12.34	17.243	
2,100.0	2,096.1	2,090.2	1,997.0	4.8	10.9	9.40	295.4	-105.7	243.4	230.9	12.48	19.508	
2,203.9	2,200.0	2,179.0	2,076.7	5.0	11.7	-22.21	318.4	-137.3	280.7	265.3	15.34	18.294	
2,300.0	2,296.1	2,257.3	2,146.3	5.1	12.4	-25.71	340.7	-165.5	320.7	304.3	16.45	19.499	
2,400.0	2,396.1	2,351.3	2,229.7	5.4	13.3	-28.54	369.7	-197.5	364.3	346.7	17.66	20.627	
2,500.0	2,496.1	2,456.1	2,324.0	5.6	14.1	-31.42	397.5	-233.9	405.2	386.3	18.92	21.412	
2,600.0	2,596.1	2,544.1	2,403.5	5.8	14.9	-33.70	418.1	-265.5	444.9	424.9	20.01	22.237	
2,700.0	2,696.1	2,628.9	2,479.6	6.0	15.7	-35.54	439.0	-296.5	486.5	465.5	21.06	23.102	
2,800.0	2,796.1	2,708.6	2,551.0	6.2	16.4	-36.90	459.8	-325.2	529.3	507.2	22.06	23.987	
2,900.0	2,896.1	2,768.0	2,603.5	6.4	17.0	-37.68	477.2	-346.8	575.2	552.3	22.87	25.149	
3,000.0	2,996.1	2,841.2	2,667.1	6.6	17.7	-38.44	501.0	-374.2	624.3	600.4	23.89	26.129	
3,100.0	3,096.1	2,927.4	2,740.8	6.9	18.6	-39.17	531.0	-407.4	675.7	650.7	25.05	26.976	
3,200.0	3,196.1	3,066.9	2,863.0	7.1	19.9	-40.22	574.8	-458.3	723.4	696.7	26.64	27.153	
3,300.0	3,296.1	3,145.8	2,933.2	7.3	20.7	-40.67	598.4	-485.4	768.5	740.9	27.59	27.851	
3,400.0	3,396.1	3,242.6	3,019.3	7.5	21.5	-41.12	628.0	-518.3	813.9	785.2	28.72	28.343	
3,500.0	3,496.1	3,397.1	3,159.5	7.7	22.8	-41.89	669.3	-568.5	855.7	825.5	30.23	28.305	
3,600.0	3,596.1	3,479.1	3,235.2	8.0	23.4	-42.32	688.1	-593.6	893.5	862.4	31.11	28.721	
3,700.0	3,696.1	3,556.8	3,306.1	8.2	24.1	-42.68	707.6	-618.6	933.7	901.8	31.97	29.210	
3,800.0	3,796.1	3,684.3	3,423.2	8.4	25.1	-43.13	739.5	-657.9	973.3	940.1	33.20	29.314	

Company:	Synergy Resources	Local Co-ordinate Reference:	Well SRC Kelly Farms 12-4-3CHZ
Project:	SEC.4-T5N-R66W	TVD Reference:	WELL @ 4764.5ft (Ensign Rig #131 - RKB -13.5')
Reference Site:	SRC Kelly Farms Pad Sec.4-T5N-R66W	MD Reference:	WELL @ 4764.5ft (Ensign Rig #131 - RKB -13.5')
Site Error:	0.0ft	North Reference:	True
Reference Well:	SRC Kelly Farms 12-4-3CHZ	Survey Calculation Method:	Minimum Curvature
Well Error:	0.0ft	Output errors are at	2.00 sigma
Reference Wellbore	Wellbore #1	Database:	Landmark
Reference Design:	Plan #3 (6-19-14)R	Offset TVD Reference:	Offset Datum

Offset Design Northridge Pad Sec.4-T5N-R66W - Northridge 12-4D (Exist.) - Wellbore #1 - Wellbore #1													Offset Site Error:	0.0ft
Survey Program: 182-MWD													Offset Well Error:	0.0ft
Reference		Offset		Semi Major Axis			Distance							Warning
Measured Depth (ft)	Vertical Depth (ft)	Measured Depth (ft)	Vertical Depth (ft)	Reference (ft)	Offset (ft)	Highside Toolface (°)	Offset Wellbore Centre +N/-S (ft)	+E/-W (ft)	Between Centres (ft)	Between Ellipses (ft)	Minimum Separation (ft)	Separation Factor		
0.0	0.0	0.0	0.0	0.0	0.0	95.89	-31.0	299.8	301.6					
100.0	100.0	89.1	89.1	0.1	0.1	95.89	-30.9	299.9	301.5	301.3	0.21	1,418.257		
200.0	200.0	188.8	188.8	0.3	0.2	95.85	-30.8	300.1	301.7	301.1	0.56	543.157		
300.0	300.0	291.4	291.4	0.6	0.4	95.97	-31.4	300.0	301.6	300.6	0.99	304.939		
400.0	400.0	401.4	401.4	0.8	0.7	95.82	-30.4	297.9	299.7	298.2	1.45	207.361		
500.0	500.0	521.2	520.8	1.0	0.9	95.23	-26.5	289.7	292.6	290.7	1.95	149.899		
600.0	600.0	629.5	628.1	1.2	1.2	94.39	-21.2	276.3	279.8	277.4	2.45	114.421		
700.0	700.0	734.5	731.8	1.5	1.6	93.20	-14.6	261.1	264.9	262.0	2.92	90.683		
800.0	800.0	835.7	831.5	1.7	1.9	91.98	-8.5	244.8	248.5	245.1	3.38	73.491		
900.0	900.0	938.2	932.3	1.9	2.3	90.76	-3.0	226.9	230.9	227.1	3.85	59.984		
1,000.0	1,000.0	1,038.5	1,030.5	2.1	2.7	89.00	3.6	207.8	211.8	207.5	4.32	49.028		
1,100.0	1,100.0	1,136.9	1,126.9	2.4	3.1	114.59	9.2	188.6	193.2	188.3	4.87	39.679		
1,200.0	1,199.8	1,240.4	1,228.0	2.6	3.6	115.00	13.2	167.1	174.7	169.4	5.35	32.661		
1,276.7	1,276.3	1,320.3	1,305.7	2.8	4.0	116.35	15.7	148.2	159.3	153.6	5.73	27.821		
1,300.0	1,299.5	1,344.0	1,328.6	2.8	4.1	116.85	16.3	142.2	154.3	148.5	5.84	26.439		
1,400.0	1,399.0	1,439.7	1,421.1	3.1	4.5	119.83	17.7	118.1	133.6	127.3	6.28	21.280		
1,500.0	1,498.5	1,534.3	1,513.2	3.3	4.9	124.78	16.8	96.4	115.7	109.0	6.69	17.300		
1,600.0	1,598.1	1,637.2	1,612.9	3.6	5.4	131.73	16.9	71.0	97.2	90.0	7.18	13.526		
1,700.0	1,697.6	1,735.4	1,707.3	3.8	6.0	142.09	17.0	44.0	77.8	70.0	7.85	9.918		
1,800.0	1,797.1	1,833.4	1,801.0	4.1	6.5	159.37	17.3	15.0	60.7	51.7	8.99	6.746		
1,900.0	1,896.7	1,929.3	1,891.9	4.3	7.1	-173.80	18.0	-15.2	51.2	40.4	10.79	4.746		
1,908.0	1,904.6	1,936.7	1,899.0	4.4	7.2	-171.37	17.9	-17.6	51.2	40.2	10.94	4.677 CC, ES		
1,927.2	1,923.7	1,954.6	1,916.0	4.4	7.3	-165.52	17.7	-23.3	51.5	40.3	11.27	4.573 SF		
2,000.0	1,996.3	2,023.1	1,980.8	4.6	7.7	-144.97	15.7	-45.1	58.7	46.5	12.18	4.818		
2,100.0	2,096.1	2,118.0	2,070.5	4.8	8.3	-123.96	12.4	-75.9	77.0	64.4	12.62	6.103		
2,203.9	2,200.0	2,215.3	2,161.4	5.0	9.0	-134.49	10.8	-110.4	102.7	90.8	11.82	8.681		
2,300.0	2,296.1	2,307.2	2,247.1	5.1	9.6	-123.82	10.6	-143.6	130.5	117.3	13.20	9.891		
2,400.0	2,396.1	2,405.9	2,339.8	5.4	10.3	-115.78	13.6	-177.5	159.4	145.0	14.46	11.027		
2,500.0	2,496.1	2,500.1	2,428.7	5.6	10.9	-110.32	17.6	-208.5	188.5	172.9	15.53	12.136		
2,600.0	2,596.1	2,590.9	2,513.9	5.8	11.5	-106.48	20.9	-239.6	220.2	203.6	16.53	13.321		
2,700.0	2,696.1	2,679.7	2,596.9	6.0	12.1	-103.51	24.5	-270.8	253.4	235.9	17.51	14.472		
2,800.0	2,796.1	2,758.8	2,669.8	6.2	12.8	-101.49	26.9	-301.5	291.0	272.5	18.43	15.787		
2,900.0	2,896.1	2,838.3	2,741.7	6.4	13.5	-99.86	28.7	-335.4	332.5	313.1	19.41	17.133		
3,000.0	2,996.1	2,939.8	2,833.6	6.6	14.3	-98.33	30.4	-378.5	374.3	353.8	20.54	18.224		
3,100.0	3,096.1	3,025.0	2,911.1	6.9	15.0	-97.12	33.3	-413.7	415.1	393.6	21.49	19.314		
3,200.0	3,196.1	3,108.9	2,986.8	7.1	15.8	-95.92	37.5	-449.5	457.2	434.7	22.49	20.328		
3,300.0	3,296.1	3,222.8	3,090.1	7.3	16.7	-94.75	42.0	-497.3	498.8	475.1	23.71	21.038		
3,400.0	3,396.1	3,321.2	3,180.7	7.5	17.5	-93.94	45.9	-535.7	537.5	512.8	24.71	21.754		
3,500.0	3,496.1	3,430.1	3,281.6	7.7	18.3	-93.53	46.9	-576.5	574.9	549.2	25.73	22.342		
3,600.0	3,596.1	3,591.7	3,435.4	8.0	19.2	-93.32	46.1	-625.4	605.3	578.4	26.93	22.481		
3,700.0	3,696.1	3,695.4	3,535.9	8.2	19.7	-92.81	50.1	-650.6	629.4	601.8	27.67	22.748		
3,800.0	3,796.1	3,775.0	3,613.0	8.4	20.1	-92.46	52.9	-670.3	654.0	625.7	28.30	23.112		
3,900.0	3,896.1	3,850.1	3,685.1	8.6	20.6	-92.13	55.8	-690.9	681.5	652.5	28.97	23.527		
4,000.0	3,996.1	3,924.8	3,756.1	8.8	21.0	-91.84	58.3	-714.1	712.4	682.8	29.68	24.006		
4,100.0	4,096.1	4,000.8	3,827.7	9.1	21.6	-91.62	60.2	-739.6	745.8	715.4	30.43	24.507		
4,200.0	4,196.1	4,077.0	3,898.9	9.3	22.1	-91.46	61.5	-766.8	781.5	750.3	31.22	25.030		
4,300.0	4,296.1	4,159.4	3,975.2	9.5	22.8	-91.29	62.9	-797.7	819.0	786.9	32.09	25.524		
4,400.0	4,396.1	4,285.6	4,092.8	9.7	23.7	-91.09	64.7	-843.4	855.2	822.0	33.22	25.742		
4,500.0	4,496.1	4,380.8	4,182.6	9.9	24.3	-91.03	64.9	-875.2	888.6	854.5	34.09	26.066		
4,600.0	4,596.1	4,456.4	4,253.3	10.2	24.8	-91.01	64.7	-901.8	923.8	889.0	34.85	26.510		
4,700.0	4,696.1	4,543.0	4,334.1	10.4	25.5	-91.03	64.0	-933.2	960.0	924.3	35.72	26.877		

CC - Min centre to center distance or convergent point, SF - min separation factor, ES - min ellipse separation

Company:	Synergy Resources	Local Co-ordinate Reference:	Well SRC Kelly Farms 12-4-3CHZ
Project:	SEC.4-T5N-R66W	TVD Reference:	WELL @ 4764.5ft (Ensign Rig #131 - RKB -13.5')
Reference Site:	SRC Kelly Farms Pad Sec.4-T5N-R66W	MD Reference:	WELL @ 4764.5ft (Ensign Rig #131 - RKB -13.5')
Site Error:	0.0ft	North Reference:	True
Reference Well:	SRC Kelly Farms 12-4-3CHZ	Survey Calculation Method:	Minimum Curvature
Well Error:	0.0ft	Output errors are at	2.00 sigma
Reference Wellbore	Wellbore #1	Database:	Landmark
Reference Design:	Plan #3 (6-19-14)R	Offset TVD Reference:	Offset Datum

Offset Design Northridge Pad Sec.4-T5N-R66W - Northridge 12-4D (Exist.) - Wellbore #1 - Wellbore #1													Offset Site Error:	0.0 ft
Survey Program: 182-MWD													Offset Well Error:	0.0 ft
Reference		Offset		Semi Major Axis			Distance						Warning	
Measured Depth (ft)	Vertical Depth (ft)	Measured Depth (ft)	Vertical Depth (ft)	Reference (ft)	Offset (ft)	Highside Toolface (°)	Offset Wellbore Centre +N/-S (ft)	Wellbore Centre +E/-W (ft)	Between Centres (ft)	Between Ellipses (ft)	Minimum Separation (ft)	Separation Factor		
4,800.0	4,796.1	4,618.0	4,403.7	10.6	26.1	-91.05	63.1	-961.1	997.3	960.8	36.52	27.311		

Company:	Synergy Resources	Local Co-ordinate Reference:	Well SRC Kelly Farms 12-4-3CHZ
Project:	SEC.4-T5N-R66W	TVD Reference:	WELL @ 4764.5ft (Ensign Rig #131 - RKB -13.5')
Reference Site:	SRC Kelly Farms Pad Sec.4-T5N-R66W	MD Reference:	WELL @ 4764.5ft (Ensign Rig #131 - RKB -13.5')
Site Error:	0.0ft	North Reference:	True
Reference Well:	SRC Kelly Farms 12-4-3CHZ	Survey Calculation Method:	Minimum Curvature
Well Error:	0.0ft	Output errors are at	2.00 sigma
Reference Wellbore	Wellbore #1	Database:	Landmark
Reference Design:	Plan #3 (6-19-14)R	Offset TVD Reference:	Offset Datum

Offset Design Northridge Pad Sec.4-T5N-R66W - Northridge 21-4D (Exist.) - Wellbore #1 - Wellbore #1													Offset Site Error:	0.0ft
Survey Program: 150-MWD													Offset Well Error:	0.0ft
Reference		Offset		Semi Major Axis			Distance							Warning
Measured Depth (ft)	Vertical Depth (ft)	Measured Depth (ft)	Vertical Depth (ft)	Reference (ft)	Offset (ft)	Highside Toolface (°)	Offset Wellbore Centre +N/-S (ft)	+E/-W (ft)	Between Centres (ft)	Between Ellipses (ft)	Minimum Separation (ft)	Separation Factor		
0.0	0.0	0.0	0.0	0.0	0.0	89.93	0.4	317.6	317.9					
100.0	100.0	87.3	87.3	0.1	0.1	89.88	0.6	317.8	317.8	317.6	0.21	1,507.850		
200.0	200.0	188.2	188.2	0.3	0.3	89.68	1.8	318.3	318.3	317.7	0.59	537.894		
300.0	300.0	294.4	294.3	0.6	0.5	88.92	6.0	317.4	317.5	316.4	1.06	298.860		
400.0	400.0	400.2	399.8	0.8	0.8	87.47	13.9	314.2	314.7	313.2	1.55	203.295		
500.0	500.0	503.4	502.3	1.0	1.0	85.59	23.9	309.4	310.6	308.6	2.04	152.234		
600.0	600.0	604.0	602.0	1.2	1.4	83.12	36.7	303.6	306.1	303.6	2.55	119.915		
700.0	700.0	702.7	699.3	1.5	1.7	80.14	51.7	297.4	302.1	299.0	3.09	97.798		
800.0	800.0	801.6	796.8	1.7	2.1	77.02	67.1	291.3	299.0	295.4	3.65	82.026		
900.0	900.0	901.4	894.7	1.9	2.5	73.34	85.0	284.0	296.5	292.2	4.25	69.710		
1,000.0	1,000.0	999.1	989.7	2.1	2.9	68.96	106.0	275.5	295.1	290.2	4.92	59.945		
1,016.2	1,016.2	1,014.7	1,004.9	2.2	3.0	94.76	109.6	274.0	295.1	289.9	5.18	56.991 CC, ES		
1,100.0	1,100.0	1,098.3	1,085.3	2.4	3.4	90.68	130.6	265.4	295.8	290.0	5.80	50.986		
1,200.0	1,199.8	1,195.4	1,177.9	2.6	4.0	85.96	157.0	253.1	297.5	290.9	6.57	45.292		
1,276.7	1,276.3	1,266.4	1,245.0	2.8	4.4	82.55	178.4	243.7	300.7	293.5	7.16	42.000		
1,300.0	1,299.5	1,287.9	1,265.2	2.8	4.6	81.57	185.1	240.9	302.0	294.7	7.34	41.136		
1,400.0	1,399.0	1,383.7	1,355.2	3.1	5.2	77.23	215.6	228.6	309.6	301.5	8.11	38.176		
1,500.0	1,498.5	1,484.1	1,449.7	3.3	5.8	73.03	246.7	215.6	318.3	309.5	8.84	36.020		
1,600.0	1,598.1	1,584.4	1,544.4	3.6	6.3	69.10	276.9	202.1	327.5	318.0	9.53	34.358		
1,700.0	1,697.6	1,682.7	1,637.5	3.8	6.9	65.60	305.5	188.9	337.4	327.2	10.19	33.115		
1,800.0	1,797.1	1,782.0	1,731.9	4.1	7.4	62.38	333.8	176.0	348.3	337.4	10.83	32.170		
1,900.0	1,896.7	1,881.0	1,826.3	4.3	8.0	59.54	361.0	163.7	359.6	348.1	11.44	31.431		
1,927.2	1,923.7	1,907.9	1,852.0	4.4	8.1	58.82	368.2	160.5	362.7	351.1	11.60	31.262		
2,000.0	1,996.3	1,980.0	1,920.9	4.6	8.5	57.05	387.4	152.0	371.8	359.8	12.01	30.967		
2,100.0	2,096.1	2,080.3	2,017.0	4.8	9.1	54.45	413.6	140.4	386.2	373.7	12.49	30.912 SF		
2,203.9	2,200.0	2,177.7	2,110.2	5.0	9.6	25.10	439.2	128.3	404.3	391.9	12.38	32.652		
2,300.0	2,296.1	2,273.9	2,202.3	5.1	10.1	22.10	464.4	116.1	422.9	409.7	13.21	32.020		
2,400.0	2,396.1	2,368.9	2,293.5	5.4	10.7	19.55	488.5	105.0	442.9	428.9	14.03	31.571		
2,500.0	2,496.1	2,459.3	2,380.2	5.6	11.1	17.34	512.0	94.9	464.4	449.6	14.83	31.318		
2,600.0	2,596.1	2,549.0	2,465.8	5.8	11.7	15.24	536.6	84.4	488.0	472.3	15.65	31.171		
2,700.0	2,696.1	2,643.0	2,555.3	6.0	12.2	13.14	562.9	72.7	512.5	496.0	16.51	31.033		
2,800.0	2,796.1	2,726.9	2,634.8	6.2	12.7	11.33	587.4	61.7	538.7	521.4	17.33	31.092		
2,900.0	2,896.1	2,814.4	2,717.1	6.4	13.3	9.53	614.7	49.7	567.5	549.3	18.19	31.189		
3,000.0	2,996.1	2,927.1	2,823.4	6.6	14.0	7.49	648.9	34.8	596.1	576.9	19.22	31.021		
3,100.0	3,096.1	3,018.0	2,909.7	6.9	14.6	6.05	675.0	23.1	623.4	603.4	20.05	31.100		
3,200.0	3,196.1	3,103.2	2,990.2	7.1	15.1	4.77	700.4	11.7	652.2	631.3	20.86	31.263		
3,300.0	3,296.1	3,221.8	3,102.7	7.3	15.8	3.16	734.7	-3.9	680.5	658.6	21.87	31.112		
3,400.0	3,396.1	3,323.3	3,199.7	7.5	16.4	2.02	761.7	-16.0	706.8	684.0	22.71	31.117		
3,500.0	3,496.1	3,422.5	3,294.7	7.7	16.9	0.99	788.1	-27.7	733.2	709.7	23.53	31.158		
3,600.0	3,596.1	3,537.2	3,405.1	8.0	17.5	-0.05	816.0	-40.7	757.6	733.2	24.40	31.045		
3,700.0	3,696.1	3,639.5	3,504.0	8.2	18.0	-0.93	839.7	-52.4	781.0	755.8	25.18	31.018		
3,800.0	3,796.1	3,733.5	3,594.9	8.4	18.5	-1.67	861.2	-62.8	804.2	778.3	25.90	31.048		
3,900.0	3,896.1	3,808.7	3,667.4	8.6	18.9	-2.21	879.2	-70.9	828.8	802.2	26.54	31.223		
4,000.0	3,996.1	3,876.5	3,732.1	8.8	19.3	-2.75	897.8	-79.2	856.7	829.6	27.18	31.525		
4,100.0	4,096.1	3,955.0	3,806.3	9.1	19.8	-3.40	921.0	-90.0	887.2	859.3	27.92	31.779		
4,200.0	4,196.1	4,031.9	3,878.5	9.3	20.3	-4.04	945.0	-101.1	919.6	890.9	28.68	32.065		
4,300.0	4,296.1	4,125.1	3,965.8	9.5	20.9	-4.74	975.2	-114.2	953.2	923.6	29.55	32.251		
4,400.0	4,396.1	4,264.2	4,097.3	9.7	21.7	-5.57	1,016.8	-131.3	984.1	953.5	30.67	32.092		

Company:	Synergy Resources	Local Co-ordinate Reference:	Well SRC Kelly Farms 12-4-3CHZ
Project:	SEC.4-T5N-R66W	TVD Reference:	WELL @ 4764.5ft (Ensign Rig #131 - RKB -13.5')
Reference Site:	SRC Kelly Farms Pad Sec.4-T5N-R66W	MD Reference:	WELL @ 4764.5ft (Ensign Rig #131 - RKB -13.5')
Site Error:	0.0ft	North Reference:	True
Reference Well:	SRC Kelly Farms 12-4-3CHZ	Survey Calculation Method:	Minimum Curvature
Well Error:	0.0ft	Output errors are at	2.00 sigma
Reference Wellbore	Wellbore #1	Database:	Landmark
Reference Design:	Plan #3 (6-19-14)R	Offset TVD Reference:	Offset Datum

Offset Design Northridge Pad Sec.4-T5N-R66W - Northridge 22-4D (Exist.) - Wellbore #1 - Wellbore #1												Offset Site Error: 0.0 ft	
Survey Program: 182-MWD												Offset Well Error: 0.0 ft	
Reference		Offset		Semi Major Axis		Distance							Warning
Measured Depth (ft)	Vertical Depth (ft)	Measured Depth (ft)	Vertical Depth (ft)	Reference (ft)	Offset (ft)	Highside Toolface (°)	Offset Wellbore Centre +N/-S (ft)	+E/-W (ft)	Between Centres (ft)	Between Ellipses (ft)	Minimum Separation (ft)	Separation Factor	
0.0	0.0	0.0	0.0	0.0	0.0	98.04	-41.5	294.0	297.1				
100.0	100.0	87.2	87.2	0.1	0.1	98.17	-42.3	294.2	297.2	297.0	0.21	1,386.090	
200.0	200.0	184.7	184.7	0.3	0.2	98.63	-44.8	295.0	298.5	297.9	0.56	537.255	
300.0	300.0	285.4	285.3	0.6	0.4	99.23	-48.1	296.0	300.0	299.0	0.99	302.897	
400.0	400.0	385.9	385.7	0.8	0.6	99.74	-51.0	296.9	301.3	299.9	1.42	212.259	
500.0	500.0	486.5	486.4	1.0	0.9	100.16	-53.4	297.7	302.5	300.6	1.86	162.585	
600.0	600.0	587.1	586.9	1.2	1.1	100.51	-55.3	298.2	303.3	301.0	2.30	131.727	
700.0	700.0	687.4	687.2	1.5	1.3	100.82	-57.1	298.8	304.3	301.5	2.74	111.040	
800.0	800.0	789.2	788.9	1.7	1.5	101.07	-58.5	299.0	304.7	301.5	3.18	95.772	
900.0	900.0	890.2	890.0	1.9	1.7	100.96	-57.9	299.1	304.7	301.1	3.62	84.077	
1,000.0	1,000.0	992.7	992.4	2.1	1.9	100.56	-55.7	299.0	304.2	300.1	4.06	74.854	
1,065.9	1,065.9	1,059.9	1,059.6	2.3	2.1	127.06	-54.6	298.4	303.9	299.5	4.35	69.805	
1,100.0	1,100.0	1,094.2	1,094.0	2.4	2.1	127.13	-54.1	298.0	304.0	299.5	4.50	67.593	
1,200.0	1,199.8	1,194.8	1,194.6	2.6	2.4	127.67	-52.7	296.6	305.5	300.6	4.92	62.048	
1,276.7	1,276.3	1,271.7	1,271.4	2.8	2.5	128.40	-51.5	295.5	308.1	302.9	5.26	58.593	
1,300.0	1,299.5	1,295.0	1,294.7	2.8	2.6	128.67	-51.1	295.1	309.1	303.7	5.36	57.648	
1,400.0	1,399.0	1,395.4	1,395.1	3.1	2.8	129.81	-49.4	293.5	313.2	307.4	5.81	53.925	
1,500.0	1,498.5	1,494.1	1,493.7	3.3	3.0	130.96	-48.0	291.9	317.6	311.3	6.25	50.849	
1,600.0	1,598.1	1,593.8	1,593.4	3.6	3.2	132.12	-46.9	290.3	322.2	315.5	6.68	48.198	
1,700.0	1,697.6	1,695.6	1,695.2	3.8	3.4	133.33	-45.9	288.3	326.6	319.4	7.14	45.753	
1,800.0	1,797.1	1,795.7	1,795.2	4.1	3.6	134.63	-45.6	285.7	330.7	323.1	7.59	43.591	
1,900.0	1,896.7	1,895.6	1,895.1	4.3	3.8	135.91	-45.4	283.1	335.0	327.0	8.03	41.707	
1,927.2	1,923.7	1,923.6	1,923.1	4.4	3.9	136.27	-45.4	282.3	336.2	328.0	8.16	41.211	
2,000.0	1,996.3	1,999.2	1,998.6	4.6	4.0	137.18	-45.3	279.6	338.2	329.7	8.48	39.883	
2,100.0	2,096.1	2,101.1	2,100.5	4.8	4.3	138.04	-45.0	275.0	337.9	329.0	8.89	38.021	
2,203.9	2,200.0	2,208.6	2,207.8	5.0	4.5	112.03	-45.3	269.5	334.4	325.1	9.36	35.715	
2,300.0	2,296.1	2,310.7	2,309.7	5.1	4.7	112.56	-45.6	262.3	328.3	318.5	9.78	33.555	
2,400.0	2,396.1	2,421.0	2,419.5	5.4	5.0	113.35	-45.9	251.6	319.5	309.2	10.26	31.128	
2,500.0	2,496.1	2,524.3	2,521.8	5.6	5.3	114.61	-47.5	238.3	308.2	297.5	10.74	28.705	
2,600.0	2,596.1	2,637.6	2,633.6	5.8	5.6	116.35	-48.7	219.9	294.0	282.8	11.26	26.114	
2,700.0	2,696.1	2,741.7	2,735.7	6.0	5.9	118.46	-49.6	199.1	276.5	264.7	11.78	23.476	
2,800.0	2,796.1	2,842.1	2,833.6	6.2	6.3	121.16	-51.3	177.2	258.3	246.0	12.30	21.001	
2,900.0	2,896.1	2,944.5	2,932.8	6.4	6.7	125.05	-54.7	152.0	239.2	226.4	12.83	18.639	
3,000.0	2,996.1	3,041.3	3,025.9	6.6	7.0	129.82	-58.3	125.8	219.6	206.3	13.32	16.486	
3,100.0	3,096.1	3,136.0	3,117.3	6.9	7.4	135.07	-61.8	101.5	202.8	189.1	13.76	14.743	
3,200.0	3,196.1	3,237.4	3,215.3	7.1	7.8	141.44	-64.8	75.5	187.6	173.4	14.18	13.233	
3,300.0	3,296.1	3,333.8	3,308.0	7.3	8.2	148.55	-65.9	49.2	172.5	157.9	14.55	11.850	
3,400.0	3,396.1	3,427.2	3,398.6	7.5	8.6	155.74	-67.1	26.3	161.9	147.0	14.90	10.870	
3,500.0	3,496.1	3,523.1	3,491.6	7.7	9.0	163.91	-69.9	3.2	156.2	140.9	15.24	10.249	
3,600.0	3,596.1	3,620.9	3,586.1	8.0	9.5	173.24	-73.0	-21.9	154.1	138.5	15.63	9.862	
3,609.1	3,605.2	3,629.8	3,594.7	8.0	9.5	174.14	-73.3	-24.3	154.1	138.4	15.67	9.836 CC, ES	
3,700.0	3,696.1	3,716.6	3,678.1	8.2	9.9	-177.00	-75.8	-48.2	156.2	140.1	16.12	9.689 SF	
3,800.0	3,796.1	3,810.9	3,768.5	8.4	10.4	-167.72	-79.2	-74.7	163.8	147.1	16.75	9.779	
3,900.0	3,896.1	3,905.9	3,859.3	8.6	10.9	-159.08	-83.1	-102.4	176.6	159.1	17.53	10.075	
4,000.0	3,996.1	4,001.6	3,950.4	8.8	11.5	-151.29	-86.7	-131.3	193.3	174.9	18.41	10.501	
4,100.0	4,096.1	4,100.3	4,044.9	9.1	12.0	-144.89	-90.4	-159.8	212.3	193.0	19.30	11.000	
4,200.0	4,196.1	4,201.9	4,143.1	9.3	12.4	-140.18	-94.5	-185.5	231.1	211.0	20.13	11.481	
4,300.0	4,296.1	4,303.8	4,242.2	9.5	12.8	-136.60	-98.2	-208.5	249.1	228.2	20.91	11.909	
4,400.0	4,396.1	4,408.0	4,344.4	9.7	13.3	-133.85	-101.7	-229.2	265.5	243.9	21.65	12.265	
4,500.0	4,496.1	4,511.2	4,445.8	9.9	13.6	-131.66	-104.6	-247.4	280.5	258.2	22.33	12.560	
4,600.0	4,596.1	4,619.5	4,552.9	10.2	14.0	-129.90	-107.0	-263.6	293.3	270.3	22.98	12.763	

CC - Min centre to center distance or convergent point, SF - min separation factor, ES - min ellipse separation

Company:	Synergy Resources	Local Co-ordinate Reference:	Well SRC Kelly Farms 12-4-3CHZ
Project:	SEC.4-T5N-R66W	TVD Reference:	WELL @ 4764.5ft (Ensign Rig #131 - RKB -13.5')
Reference Site:	SRC Kelly Farms Pad Sec.4-T5N-R66W	MD Reference:	WELL @ 4764.5ft (Ensign Rig #131 - RKB -13.5')
Site Error:	0.0ft	North Reference:	True
Reference Well:	SRC Kelly Farms 12-4-3CHZ	Survey Calculation Method:	Minimum Curvature
Well Error:	0.0ft	Output errors are at	2.00 sigma
Reference Wellbore	Wellbore #1	Database:	Landmark
Reference Design:	Plan #3 (6-19-14)R	Offset TVD Reference:	Offset Datum

Offset Design Northridge Pad Sec.4-T5N-R66W - Northridge 22-4D (Exist.) - Wellbore #1 - Wellbore #1													Offset Site Error: 0.0 ft	
Survey Program: 182-MWD													Offset Well Error: 0.0 ft	
Reference		Offset		Semi Major Axis			Distance							Warning
Measured Depth (ft)	Vertical Depth (ft)	Measured Depth (ft)	Vertical Depth (ft)	Reference (ft)	Offset (ft)	Highside Toolface (°)	Offset Wellbore Centre		Between Centres (ft)	Between Ellipses (ft)	Minimum Separation (ft)	Separation Factor		
							+N/-S (ft)	+E/-W (ft)						
4,700.0	4,696.1	4,729.4	4,662.1	10.4	14.3	-128.71	-108.7	-275.4	302.6	279.0	23.56	12.844		
4,800.0	4,796.1	4,840.4	4,772.8	10.6	14.5	-127.69	-108.6	-284.1	308.7	284.6	24.09	12.817		
4,900.0	4,896.1	4,947.1	4,879.4	10.8	14.8	-126.92	-107.1	-289.1	311.6	287.0	24.55	12.689		
5,000.0	4,996.1	5,049.1	4,981.4	11.0	14.9	-126.49	-106.2	-291.8	313.2	288.2	24.97	12.540		
5,100.0	5,096.1	5,149.2	5,081.4	11.3	15.1	-126.24	-105.9	-293.7	314.5	289.2	25.38	12.393		
5,200.0	5,196.1	5,250.1	5,182.3	11.5	15.3	-126.06	-105.8	-295.2	315.7	289.9	25.78	12.246		
5,300.0	5,296.1	5,349.9	5,282.1	11.7	15.4	-125.92	-105.8	-296.5	316.8	290.6	26.18	12.101		
5,400.0	5,396.1	5,450.2	5,382.4	11.9	15.6	-125.88	-106.3	-297.5	317.8	291.3	26.57	11.962		
5,500.0	5,496.1	5,550.3	5,482.5	12.2	15.7	-125.96	-107.2	-298.0	318.8	291.9	26.96	11.827		
5,600.0	5,596.1	5,650.5	5,582.6	12.4	15.9	-126.12	-108.5	-298.3	319.8	292.5	27.34	11.696		
5,700.0	5,696.1	5,751.0	5,683.2	12.6	16.0	-126.30	-109.8	-298.4	320.6	292.9	27.73	11.565		
5,800.0	5,796.1	5,851.1	5,783.2	12.8	16.2	-126.47	-111.0	-298.4	321.4	293.3	28.11	11.434		
5,900.0	5,896.1	5,950.9	5,883.1	13.0	16.4	-126.63	-112.2	-298.5	322.1	293.6	28.49	11.306		
6,000.0	5,996.1	6,050.6	5,982.7	13.3	16.5	-126.75	-113.3	-298.8	323.0	294.1	28.88	11.183		
6,100.0	6,096.1	6,150.3	6,082.5	13.5	16.7	-126.92	-114.6	-299.0	323.9	294.7	29.27	11.067		
6,200.0	6,196.1	6,250.4	6,182.6	13.7	16.8	-127.10	-116.0	-299.1	324.9	295.2	29.66	10.953		
6,300.0	6,296.1	6,349.4	6,281.5	13.9	17.0	-127.31	-117.6	-299.2	326.0	295.9	30.05	10.848		
6,400.0	6,396.1	6,449.3	6,381.4	14.2	17.2	-127.59	-119.6	-299.3	327.3	296.8	30.44	10.752		
6,446.3	6,442.4	6,495.5	6,427.6	14.3	17.2	-127.75	-120.7	-299.2	327.9	297.2	30.62	10.708		
6,450.0	6,446.1	6,499.1	6,431.2	14.3	17.2	141.83	-120.8	-299.2	327.9	298.9	29.05	11.288		
6,500.0	6,496.1	6,547.6	6,479.6	14.4	17.3	141.77	-121.9	-299.3	330.1	301.0	29.16	11.320		
6,550.0	6,545.8	6,595.7	6,527.8	14.5	17.4	141.94	-123.1	-299.7	335.1	305.9	29.21	11.471		
6,600.0	6,595.1	6,644.0	6,576.0	14.6	17.5	142.34	-124.1	-300.3	342.7	313.5	29.19	11.740		
6,650.0	6,643.9	6,691.9	6,623.9	14.6	17.6	142.90	-125.2	-301.0	353.0	323.9	29.11	12.127		
6,700.0	6,691.8	6,739.0	6,671.0	14.7	17.7	143.57	-126.3	-301.8	366.0	337.0	28.96	12.638		
6,750.0	6,738.7	6,785.6	6,717.5	14.8	17.8	144.33	-127.4	-302.7	381.6	352.9	28.75	13.276		
6,800.0	6,784.4	6,830.9	6,762.9	15.0	17.8	145.10	-128.5	-303.5	399.9	371.5	28.48	14.045		
6,850.0	6,828.7	6,874.7	6,806.6	15.1	17.9	145.83	-129.6	-304.3	420.9	392.8	28.16	14.950		
6,900.0	6,871.5	6,916.2	6,848.2	15.3	18.0	146.47	-130.6	-305.0	444.7	416.9	27.80	15.995		
6,950.0	6,912.6	6,956.0	6,887.9	15.5	18.1	146.98	-131.6	-305.8	471.1	443.7	27.42	17.180		
7,000.0	6,951.8	6,993.8	6,925.6	15.7	18.1	147.35	-132.6	-306.6	500.1	473.1	27.04	18.497		
7,050.0	6,988.9	7,029.7	6,961.6	16.0	18.2	147.53	-133.6	-307.4	531.7	505.0	26.68	19.932		
7,100.0	7,023.9	7,063.4	6,995.3	16.3	18.3	147.49	-134.6	-308.2	565.7	539.3	26.36	21.455		
7,150.0	7,056.5	7,094.8	7,026.6	16.7	18.3	147.18	-135.5	-308.9	601.9	575.7	26.14	23.022		
7,200.0	7,086.6	7,123.5	7,055.3	17.2	18.4	146.54	-136.4	-309.6	640.1	614.1	26.06	24.566		
7,250.0	7,114.2	7,149.5	7,081.3	17.7	18.5	145.49	-137.2	-310.2	680.4	654.2	26.18	25.992		
7,300.0	7,139.1	7,172.7	7,104.5	18.3	18.5	143.93	-137.9	-310.8	722.4	695.8	26.57	27.186		
7,350.0	7,161.1	7,193.1	7,124.9	19.0	18.5	141.70	-138.5	-311.3	765.9	738.6	27.34	28.015		
7,400.0	7,180.3	7,210.7	7,142.4	19.8	18.6	138.59	-139.1	-311.7	810.9	782.3	28.60	28.349		
7,450.0	7,196.5	7,225.2	7,156.9	20.6	18.6	134.25	-139.5	-312.1	857.0	826.5	30.50	28.100		
7,500.0	7,209.7	7,236.8	7,168.5	21.5	18.6	128.18	-139.9	-312.4	904.0	870.9	33.15	27.273		
7,550.0	7,219.9	7,245.3	7,177.0	22.4	18.6	119.68	-140.2	-312.7	951.9	915.4	36.54	26.047		

Northridge Pad Sec.4-T5N-R66W - Northridge 4AD (Exist.) - Wellbore #1 - Wellbore #1													Offset Site Error:	0.0 ft
Survey Program: 182-MWD													Offset Well Error:	0.0 ft
Reference		Offset		Semi Major Axis			Distance						Warning	
Measured Depth (ft)	Vertical Depth (ft)	Measured Depth (ft)	Vertical Depth (ft)	Reference (ft)	Offset (ft)	Highside Toolface (°)	Offset Wellbore Centre +N/-S (ft)	+E/-W (ft)	Between Centres (ft)	Between Ellipses (ft)	Minimum Separation (ft)	Separation Factor		
0.0	0.0	0.0	0.0	0.0	0.0	93.81	-20.4	306.0	306.8					
100.0	100.0	90.0	90.0	0.1	0.1	93.80	-20.3	305.7	306.4	306.2	0.21	1,431.945		
200.0	200.0	191.1	191.1	0.3	0.2	93.77	-20.1	305.0	305.6	305.1	0.56	545.132		
246.1	246.1	234.6	234.5	0.4	0.3	93.74	-19.9	304.8	305.4	304.7	0.75	406.087		
300.0	300.0	286.6	286.6	0.6	0.4	93.71	-19.8	305.0	305.7	304.7	0.98	312.206		
400.0	400.0	391.3	391.3	0.8	0.6	93.77	-20.1	304.9	305.5	304.1	1.42	214.913		
500.0	500.0	493.3	493.2	1.0	0.9	93.76	-20.0	303.3	304.0	302.1	1.87	162.878		
600.0	600.0	592.1	592.0	1.2	1.1	93.57	-18.9	302.2	302.9	300.6	2.30	131.824		
700.0	700.0	693.2	693.2	1.5	1.3	93.71	-19.5	300.7	301.4	298.7	2.73	110.274		
800.0	800.0	796.0	795.9	1.7	1.5	93.87	-20.2	298.8	299.5	296.3	3.18	94.179		
900.0	900.0	895.3	895.2	1.9	1.7	93.87	-20.0	296.3	297.1	293.5	3.62	82.165		
1,000.0	1,000.0	1,005.5	1,005.3	2.1	2.0	93.64	-18.6	292.2	293.3	289.2	4.08	71.919		
1,100.0	1,100.0	1,118.3	1,117.6	2.4	2.2	120.22	-15.7	282.7	285.5	281.0	4.55	62.737		
1,200.0	1,199.8	1,219.6	1,218.3	2.6	2.5	120.30	-10.2	272.7	277.9	272.9	5.00	55.612		
1,276.7	1,276.3	1,302.4	1,300.4	2.8	2.7	120.69	-5.1	263.3	272.1	266.8	5.36	50.797		
1,300.0	1,299.5	1,328.8	1,326.5	2.8	2.8	120.82	-3.2	259.8	270.1	264.6	5.47	49.338		
1,400.0	1,399.0	1,436.2	1,432.2	3.1	3.1	120.97	6.2	243.1	258.8	252.8	5.97	43.317		
1,500.0	1,498.5	1,539.7	1,533.5	3.3	3.5	120.71	17.2	225.1	245.5	239.1	6.48	37.914		
1,600.0	1,598.1	1,644.3	1,635.7	3.6	3.9	120.91	26.4	204.7	230.3	223.3	6.99	32.952		
1,700.0	1,697.6	1,747.0	1,735.4	3.8	4.3	120.74	37.0	182.5	212.8	205.3	7.52	28.291		
1,800.0	1,797.1	1,846.1	1,831.3	4.1	4.8	120.54	47.4	159.9	194.2	186.1	8.05	24.130		
1,900.0	1,896.7	1,943.9	1,926.0	4.3	5.2	120.31	57.6	137.8	175.6	167.1	8.57	20.494		
1,927.2	1,923.7	1,971.5	1,952.7	4.4	5.3	120.17	60.7	131.4	170.5	161.8	8.72	19.551		
2,000.0	1,996.3	2,044.9	2,023.5	4.6	5.7	118.93	69.5	114.0	155.7	146.6	9.13	17.055		
2,100.0	2,096.1	2,143.8	2,118.3	4.8	6.2	115.08	82.7	89.3	132.9	123.1	9.73	13.649		
2,203.9	2,200.0	2,244.5	2,214.2	5.0	6.8	79.84	98.5	63.1	107.8	96.8	10.99	9.808		
2,300.0	2,296.1	2,336.3	2,301.5	5.1	7.3	67.09	113.1	38.2	86.6	75.5	11.13	7.779		
2,400.0	2,396.1	2,431.3	2,391.8	5.4	7.9	47.98	127.7	12.9	71.6	60.6	10.97	6.526		
2,476.7	2,472.8	2,504.3	2,461.3	5.5	8.3	29.71	138.7	-6.5	67.5	56.5	10.99	6.144 CC, ES		
2,500.0	2,496.1	2,526.1	2,482.0	5.6	8.4	24.02	142.0	-12.4	68.0	56.9	11.12	6.114 SF		
2,600.0	2,596.1	2,619.6	2,570.7	5.8	9.0	1.88	158.1	-37.4	79.4	67.1	12.32	6.447		
2,700.0	2,696.1	2,714.4	2,660.4	6.0	9.5	-13.64	174.8	-63.0	100.5	86.7	13.80	7.283		
2,800.0	2,796.1	2,808.3	2,748.8	6.2	10.1	-24.45	190.8	-90.4	126.9	111.8	15.15	8.376		
2,900.0	2,896.1	2,904.9	2,839.6	6.4	10.8	-32.09	206.6	-119.4	156.0	139.7	16.34	9.548		
3,000.0	2,996.1	3,003.6	2,933.5	6.6	11.4	-36.88	221.2	-145.9	183.7	166.4	17.35	10.593		
3,100.0	3,096.1	3,096.6	3,021.9	6.9	11.9	-40.37	234.6	-171.4	212.4	194.1	18.25	11.636		
3,200.0	3,196.1	3,192.7	3,113.2	7.1	12.5	-42.76	250.1	-197.2	242.4	223.2	19.13	12.670		
3,300.0	3,296.1	3,296.4	3,212.3	7.3	13.1	-44.80	265.0	-223.7	270.6	250.6	20.00	13.530		
3,400.0	3,396.1	3,396.5	3,308.6	7.5	13.6	-46.74	276.3	-248.6	296.4	275.6	20.81	14.243		
3,500.0	3,496.1	3,495.6	3,404.1	7.7	14.1	-48.25	287.5	-272.5	321.8	300.3	21.58	14.912		
3,600.0	3,596.1	3,593.6	3,498.8	8.0	14.6	-49.60	297.7	-295.7	346.6	324.3	22.34	15.518		
3,700.0	3,696.1	3,688.2	3,590.2	8.2	15.1	-50.54	308.4	-317.5	371.6	348.5	23.07	16.111		
3,800.0	3,796.1	3,773.8	3,672.7	8.4	15.6	-51.31	318.8	-338.2	398.1	374.4	23.78	16.746		
3,900.0	3,896.1	3,854.6	3,749.7	8.6	16.1	-51.76	331.4	-359.0	427.9	403.4	24.49	17.471		
4,000.0	3,996.1	3,936.0	3,826.5	8.8	16.6	-52.08	346.2	-381.6	461.0	435.8	25.26	18.253		
4,100.0	4,096.1	4,022.6	3,907.5	9.1	17.2	-52.35	363.1	-407.0	496.2	470.1	26.09	19.019		
4,200.0	4,196.1	4,122.8	4,001.1	9.3	17.9	-52.68	382.6	-437.0	531.8	504.8	27.02	19.683		
4,300.0	4,296.1	4,245.6	4,117.4	9.5	18.7	-53.14	403.0	-470.9	563.9	535.9	28.02	20.126		
4,400.0	4,396.1	4,328.5	4,196.4	9.7	19.2	-53.54	414.7	-493.0	593.8	565.1	28.76	20.649		
4,500.0	4,496.1	4,414.4	4,277.3	9.9	19.7	-53.89	428.7	-518.0	626.9	597.4	29.54	21.226		
4,600.0	4,596.1	4,505.7	4,363.6	10.2	20.3	-54.12	444.3	-543.6	659.7	629.3	30.36	21.728		

Northridge Pad Sec.4-T5N-R66W - Northridge 4AD (Exist.) - Wellbore #1 - Wellbore #1													Offset Site Error:	0.0 ft
Survey Program: 182-MWD													Offset Well Error:	0.0 ft
Reference		Offset		Semi Major Axis			Distance							Warning
Measured Depth Depth (ft)	Vertical Depth (ft)	Measured Depth (ft)	Vertical Depth (ft)	Reference (ft)	Offset (ft)	Highside Toolface (°)	Offset Wellbore Centre +N/-S (ft)	+E/-W (ft)	Between Centres (ft)	Between Ellipses (ft)	Minimum Separation (ft)	Separation Factor		
4,700.0	4,696.1	4,584.2	4,437.3	10.4	20.9	-54.26	458.9	-566.6	694.3	663.2	31.12	22.308		
4,800.0	4,796.1	4,670.6	4,517.6	10.6	21.5	-54.61	473.9	-594.5	730.7	698.8	31.98	22.852		
4,900.0	4,896.1	4,779.4	4,619.3	10.8	22.2	-54.85	493.7	-627.6	766.0	733.1	32.96	23.242		
5,000.0	4,996.1	4,890.7	4,724.0	11.0	23.0	-54.97	514.2	-659.5	800.1	766.2	33.91	23.596		
5,100.0	5,096.1	4,991.2	4,819.3	11.3	23.6	-55.13	530.7	-686.8	831.8	797.0	34.77	23.925		
5,200.0	5,196.1	5,120.2	4,942.0	11.5	24.4	-55.24	552.0	-720.1	862.7	826.9	35.77	24.118		
5,300.0	5,296.1	5,280.7	5,097.1	11.7	25.2	-55.58	571.0	-756.5	888.6	851.8	36.80	24.145		
5,400.0	5,396.1	5,400.9	5,215.1	11.9	25.7	-55.78	581.5	-777.4	907.8	870.2	37.52	24.197		
5,500.0	5,496.1	5,567.7	5,379.9	12.2	26.2	-56.07	591.7	-800.6	922.7	884.4	38.28	24.102		
5,600.0	5,596.1	5,698.6	5,510.2	12.4	26.5	-56.20	596.7	-811.8	931.8	893.0	38.82	24.005		
5,700.0	5,696.1	5,799.7	5,610.9	12.6	26.7	-56.17	601.8	-818.6	940.2	900.9	39.25	23.951		
5,800.0	5,796.1	5,935.1	5,746.1	12.8	27.0	-56.18	605.9	-824.9	945.6	905.8	39.72	23.808		
5,900.0	5,896.1	6,035.8	5,846.7	13.0	27.1	-56.22	607.4	-828.5	949.4	909.3	40.09	23.679		
6,000.0	5,996.1	6,137.7	5,948.5	13.3	27.3	-56.33	608.1	-832.9	953.3	912.9	40.47	23.554		
6,100.0	6,096.1	6,242.0	6,052.7	13.5	27.4	-56.44	608.7	-837.0	956.9	916.1	40.86	23.422		
6,200.0	6,196.1	6,347.8	6,158.4	13.7	27.6	-56.58	608.5	-840.9	960.0	918.7	41.23	23.282		
6,300.0	6,296.1	6,461.8	6,272.5	13.9	27.7	-56.76	607.3	-844.6	962.0	920.4	41.60	23.125		
6,400.0	6,396.1	6,565.5	6,376.1	14.2	27.8	-56.90	605.7	-846.5	962.7	920.8	41.95	22.949		
6,446.3	6,442.4	6,606.3	6,416.9	14.3	27.9	-56.96	605.2	-847.4	963.3	921.2	42.11	22.878		
6,450.0	6,446.1	6,609.6	6,420.2	14.3	27.9	-147.37	605.2	-847.5	963.4	933.1	30.26	31.838		
6,500.0	6,496.1	6,653.6	6,464.2	14.4	28.0	-147.38	604.9	-848.6	965.8	935.6	30.22	31.957		
6,550.0	6,545.8	6,701.7	6,512.2	14.5	28.0	-147.38	604.7	-850.1	971.2	941.0	30.13	32.230		
6,600.0	6,595.1	6,757.3	6,567.8	14.6	28.1	-147.43	604.2	-851.7	979.0	949.0	30.00	32.638		
6,650.0	6,643.9	6,812.2	6,622.7	14.6	28.2	-147.50	603.4	-853.0	989.2	959.4	29.80	33.194		

Company:	Synergy Resources	Local Co-ordinate Reference:	Well SRC Kelly Farms 12-4-3CHZ
Project:	SEC.4-T5N-R66W	TVD Reference:	WELL @ 4764.5ft (Ensign Rig #131 - RKB -13.5')
Reference Site:	SRC Kelly Farms Pad Sec.4-T5N-R66W	MD Reference:	WELL @ 4764.5ft (Ensign Rig #131 - RKB -13.5')
Site Error:	0.0ft	North Reference:	True
Reference Well:	SRC Kelly Farms 12-4-3CHZ	Survey Calculation Method:	Minimum Curvature
Well Error:	0.0ft	Output errors are at	2.00 sigma
Reference Wellbore	Wellbore #1	Database:	Landmark
Reference Design:	Plan #3 (6-19-14)R	Offset TVD Reference:	Offset Datum

Offset Design Northridge Pad Sec.4-T5N-R66W - Northridge 4KD (Exist.) - Wellbore #1 - Wellbore #1													Offset Site Error: 0.0 ft	
Survey Program: 124-MWD													Offset Well Error: 0.0 ft	
Reference		Offset		Semi Major Axis		Distance								Warning
Measured Depth (ft)	Vertical Depth (ft)	Measured Depth (ft)	Vertical Depth (ft)	Reference (ft)	Offset (ft)	Highside Toolface (°)	Offset Wellbore Centre +N/-S (ft)	+E/-W (ft)	Between Centres (ft)	Between Ellipses (ft)	Minimum Separation (ft)	Separation Factor		
0.0	0.0	0.0	0.0	0.0	0.0	100.25	-52.1	288.1	293.0					
100.0	100.0	92.1	92.1	0.1	0.1	100.18	-51.7	287.8	292.4	292.2	0.22	1,348.880		
200.0	200.0	194.5	194.5	0.3	0.3	100.02	-50.6	286.6	291.1	290.4	0.63	461.137		
300.0	300.0	299.7	299.6	0.6	0.5	99.97	-49.9	284.0	288.6	287.5	1.09	264.915		
400.0	400.0	404.0	403.9	0.8	0.8	100.12	-49.9	279.6	284.3	282.8	1.56	182.648		
500.0	500.0	521.7	521.1	1.0	1.2	100.86	-51.6	269.2	275.9	273.8	2.11	130.540		
600.0	600.0	629.6	627.8	1.2	1.6	102.28	-55.2	253.6	262.4	259.6	2.74	95.708		
700.0	700.0	729.2	725.8	1.5	2.2	104.45	-61.1	237.2	247.6	244.2	3.42	72.340		
800.0	800.0	826.8	821.7	1.7	2.7	107.35	-69.0	220.8	233.6	229.4	4.18	55.875		
900.0	900.0	930.0	922.3	1.9	3.4	111.99	-81.2	200.9	219.2	214.0	5.12	42.785		
1,000.0	1,000.0	1,031.2	1,020.1	2.1	4.1	117.71	-93.8	178.5	203.9	197.7	6.16	33.085		
1,100.0	1,100.0	1,127.0	1,112.2	2.4	4.9	151.47	-107.1	155.5	191.7	184.9	6.74	28.436		
1,196.2	1,196.0	1,216.3	1,197.5	2.6	5.7	159.62	-121.5	133.7	187.3	179.4	7.92	23.643 CC		
1,200.0	1,199.8	1,219.8	1,200.9	2.6	5.7	159.96	-122.1	132.8	187.3	179.3	7.97	23.501 ES		
1,276.7	1,276.3	1,291.3	1,268.8	2.8	6.3	167.15	-135.4	115.0	190.6	181.7	8.91	21.389		
1,300.0	1,299.5	1,315.1	1,291.4	2.8	6.5	169.51	-139.7	108.9	192.5	183.3	9.19	20.943		
1,400.0	1,399.0	1,412.0	1,383.6	3.1	7.2	178.46	-155.6	83.8	202.0	191.8	10.21	19.787		
1,500.0	1,498.5	1,504.0	1,471.5	3.3	7.9	-174.18	-170.9	61.2	216.9	205.8	11.06	19.618 SF		
1,600.0	1,598.1	1,597.8	1,560.9	3.6	8.6	-167.55	-187.2	38.0	235.8	224.0	11.87	19.876		
1,700.0	1,697.6	1,691.9	1,650.8	3.8	9.4	-162.05	-203.7	15.4	257.8	245.2	12.57	20.509		
1,800.0	1,797.1	1,786.7	1,741.1	4.1	10.2	-157.26	-220.3	-7.8	281.9	268.6	13.25	21.278		
1,900.0	1,896.7	1,884.4	1,834.0	4.3	11.0	-152.85	-237.1	-33.1	307.2	293.3	13.93	22.058		
1,927.2	1,923.7	1,911.7	1,859.9	4.4	11.3	-151.68	-241.4	-40.5	314.1	300.0	14.10	22.272		
2,000.0	1,996.3	1,982.0	1,926.8	4.6	11.8	-148.98	-252.3	-59.6	331.9	317.4	14.52	22.852		
2,100.0	2,096.1	2,075.0	2,015.5	4.8	12.6	-145.92	-266.8	-83.2	354.9	339.9	15.03	23.614		
2,203.9	2,200.0	2,174.1	2,109.8	5.0	13.4	-169.27	-283.1	-108.8	378.1	363.5	14.53	26.012		
2,300.0	2,296.1	2,263.5	2,195.3	5.1	14.1	-166.51	-297.6	-130.6	398.7	383.1	15.62	25.531		
2,400.0	2,396.1	2,361.1	2,288.5	5.4	14.8	-163.87	-314.7	-154.1	422.2	405.4	16.79	25.144		
2,500.0	2,496.1	2,468.3	2,391.0	5.6	15.6	-161.07	-330.5	-180.8	444.2	426.2	18.02	24.645		
2,600.0	2,596.1	2,558.8	2,477.9	5.8	16.3	-158.90	-343.0	-203.2	466.0	446.9	19.08	24.425		
2,700.0	2,696.1	2,648.9	2,564.2	6.0	17.0	-157.15	-357.6	-224.4	490.2	470.0	20.15	24.331		
2,800.0	2,796.1	2,748.4	2,659.2	6.2	17.9	-155.18	-373.2	-249.6	515.1	493.7	21.35	24.127		
2,900.0	2,896.1	2,837.1	2,743.5	6.4	18.7	-153.33	-385.6	-273.9	540.1	517.6	22.49	24.018		
3,000.0	2,996.1	2,940.3	2,841.4	6.6	19.6	-151.32	-400.8	-303.0	566.7	542.9	23.75	23.859		
3,100.0	3,096.1	3,023.7	2,920.7	6.9	20.3	-149.80	-412.1	-326.4	592.8	568.0	24.81	23.890		
3,200.0	3,196.1	3,108.8	3,000.8	7.1	21.1	-148.29	-425.2	-352.1	622.0	596.0	25.94	23.973		
3,300.0	3,296.1	3,221.6	3,107.0	7.3	22.1	-146.45	-441.9	-386.0	651.1	623.8	27.32	23.836		
3,400.0	3,396.1	3,313.0	3,193.7	7.5	22.9	-145.09	-453.7	-412.5	678.5	650.1	28.43	23.869		
3,500.0	3,496.1	3,393.9	3,270.2	7.7	23.7	-144.01	-465.5	-436.2	707.8	678.4	29.48	24.007		
3,600.0	3,596.1	3,498.2	3,368.4	8.0	24.6	-142.79	-482.2	-466.8	738.5	707.8	30.75	24.015		
3,700.0	3,696.1	3,615.5	3,479.8	8.2	25.6	-141.42	-497.2	-500.4	766.5	734.4	32.05	23.916		
3,800.0	3,796.1	3,713.0	3,572.9	8.4	26.4	-140.21	-505.9	-527.9	791.6	758.5	33.10	23.915		
3,900.0	3,896.1	3,786.7	3,643.2	8.6	27.0	-139.40	-513.5	-548.8	818.4	784.4	34.00	24.072		
4,000.0	3,996.1	3,849.8	3,702.3	8.8	27.6	-138.70	-522.1	-569.0	850.1	815.2	34.90	24.355		
4,100.0	4,096.1	3,922.0	3,769.0	9.1	28.4	-137.82	-532.3	-594.8	884.9	848.9	35.99	24.588		
4,200.0	4,196.1	4,008.4	3,848.3	9.3	29.5	-136.77	-544.4	-626.9	920.9	883.6	37.28	24.700		
4,300.0	4,296.1	4,075.1	3,909.1	9.5	30.2	-136.05	-554.9	-652.1	958.9	920.5	38.34	25.007		
4,400.0	4,396.1	4,170.3	3,995.6	9.7	31.4	-135.14	-571.4	-688.2	998.3	958.6	39.73	25.125		

Company:	Synergy Resources	Local Co-ordinate Reference:	Well SRC Kelly Farms 12-4-3CHZ
Project:	SEC.4-T5N-R66W	TVD Reference:	WELL @ 4764.5ft (Ensign Rig #131 - RKB -13.5')
Reference Site:	SRC Kelly Farms Pad Sec.4-T5N-R66W	MD Reference:	WELL @ 4764.5ft (Ensign Rig #131 - RKB -13.5')
Site Error:	0.0ft	North Reference:	True
Reference Well:	SRC Kelly Farms 12-4-3CHZ	Survey Calculation Method:	Minimum Curvature
Well Error:	0.0ft	Output errors are at	2.00 sigma
Reference Wellbore	Wellbore #1	Database:	Landmark
Reference Design:	Plan #3 (6-19-14)R	Offset TVD Reference:	Offset Datum

Offset Design Northridge Pad Sec.4-T5N-R66W - Northridge 4ND (Exist.) - Northridge 4ND - Northridge 4ND														Offset Site Error:	0.0ft
Survey Program: 0-MWD														Offset Well Error:	0.0ft
Measured Depth (ft)	Vertical Depth (ft)	Measured Depth (ft)	Vertical Depth (ft)	Reference	Offset	Semi Major Axis	Highside Toolface (°)	Offset Wellbore Centre +N/-S (ft)	+E/-W (ft)	Distance	Between Centres (ft)	Between Ellipses (ft)	Minimum Separation (ft)	Separation Factor	Warning
0.0	0.0	0.0	0.0	0.0	0.0	75.93	75.93	92.9	370.8	382.5					
100.0	100.0	88.5	88.5	0.1	0.1	75.93	75.93	92.9	370.8	382.3	382.1	0.21	1,804.356		
200.0	200.0	188.5	188.5	0.3	0.3	75.93	75.93	92.9	370.8	382.3	381.6	0.65	589.529		
300.0	300.0	288.5	288.5	0.6	0.5	75.93	75.93	92.9	370.8	382.3	381.2	1.10	348.166		
400.0	400.0	388.5	388.5	0.8	0.8	75.93	75.93	92.9	370.8	382.3	380.7	1.55	247.028		
500.0	500.0	488.5	488.5	1.0	1.0	75.93	75.93	92.9	370.8	382.3	380.3	2.00	191.423		
600.0	600.0	588.5	588.5	1.2	1.2	75.93	75.93	92.9	370.8	382.3	379.8	2.45	156.251		
700.0	700.0	688.5	688.5	1.5	1.4	75.93	75.93	92.9	370.8	382.3	379.4	2.90	131.998		
800.0	800.0	788.5	788.5	1.7	1.7	75.93	75.93	92.9	370.8	382.3	378.9	3.35	114.262		
900.0	900.0	888.5	888.5	1.9	1.9	75.93	75.93	92.9	370.8	382.3	378.5	3.80	100.728		
1,000.0	1,000.0	988.5	988.5	2.1	2.1	75.93	75.93	92.9	370.8	382.3	378.0	4.24	90.060 CC		
1,100.0	1,100.0	1,088.5	1,088.5	2.4	2.3	102.75	102.75	92.9	370.8	382.7	378.0	4.69	81.555 ES		
1,200.0	1,199.8	1,188.3	1,188.3	2.6	2.6	103.48	103.48	92.9	370.8	383.9	378.7	5.14	74.699		
1,276.7	1,276.3	1,264.8	1,264.8	2.8	2.7	104.37	104.37	92.9	370.8	385.4	379.9	5.48	70.264		
1,300.0	1,299.5	1,288.0	1,288.0	2.8	2.8	104.69	104.69	92.9	370.8	386.0	380.4	5.59	69.031		
1,400.0	1,399.0	1,387.5	1,387.5	3.1	3.0	106.06	106.06	92.9	370.8	388.5	382.5	6.05	64.198		
1,500.0	1,498.5	1,487.0	1,487.0	3.3	3.2	107.42	107.42	92.9	370.8	391.3	384.8	6.52	60.027		
1,600.0	1,598.1	1,586.6	1,586.6	3.6	3.5	108.75	108.75	92.9	370.8	394.3	387.3	6.99	56.408		
1,700.0	1,697.6	1,686.1	1,686.1	3.8	3.7	110.06	110.06	92.9	370.8	397.5	390.1	7.47	53.251		
1,800.0	1,797.1	1,785.6	1,785.6	4.1	3.9	111.35	111.35	92.9	370.8	401.0	393.0	7.94	50.483		
1,900.0	1,896.7	1,885.2	1,885.2	4.3	4.1	112.61	112.61	92.9	370.8	404.6	396.2	8.42	48.043		
1,927.2	1,923.7	1,912.2	1,912.2	4.4	4.2	112.96	112.96	92.9	370.8	405.6	397.1	8.55	47.431		
2,000.0	1,996.3	1,984.8	1,984.8	4.6	4.3	113.79	113.79	92.9	370.8	408.0	399.2	8.88	45.949		
2,100.0	2,096.1	2,085.9	2,085.8	4.8	4.6	114.34	114.34	94.2	370.6	410.1	400.8	9.30	44.107		
2,203.9	2,200.0	2,191.1	2,191.0	5.0	4.8	87.31	87.31	99.2	369.9	410.4	400.8	9.60	42.768		
2,300.0	2,296.1	2,288.0	2,287.6	5.1	5.0	86.19	86.19	107.2	368.8	409.7	399.7	10.00	40.966		
2,400.0	2,396.1	2,388.2	2,387.0	5.4	5.3	84.54	84.54	118.9	367.2	409.1	398.6	10.45	39.161		
2,500.0	2,496.1	2,487.4	2,485.0	5.6	5.5	82.43	82.43	133.9	365.1	408.7	397.8	10.89	37.537		
2,513.9	2,510.0	2,501.1	2,498.5	5.6	5.5	82.09	82.09	136.2	364.8	408.7	397.7	10.95	37.326		
2,600.0	2,596.1	2,585.4	2,581.3	5.8	5.8	79.87	79.87	151.9	362.6	409.0	397.7	11.33	36.104		
2,700.0	2,696.1	2,682.1	2,675.7	6.0	6.0	76.91	76.91	173.0	359.7	410.5	398.7	11.77	34.873		
2,800.0	2,796.1	2,779.3	2,770.1	6.2	6.4	73.75	73.75	195.6	356.6	413.3	401.1	12.21	33.839		
2,900.0	2,896.1	2,876.5	2,864.6	6.4	6.7	70.65	70.65	218.2	353.4	417.5	404.8	12.66	32.965		
3,000.0	2,996.1	2,973.7	2,959.1	6.6	7.0	67.61	67.61	240.8	350.3	422.9	409.7	13.12	32.220		
3,100.0	3,096.1	3,070.9	3,053.6	6.9	7.4	64.66	64.66	263.4	347.1	429.5	415.9	13.60	31.585		
3,200.0	3,196.1	3,168.1	3,148.1	7.1	7.8	61.79	61.79	286.0	344.0	437.3	423.2	14.09	31.043		
3,300.0	3,296.1	3,265.3	3,242.6	7.3	8.2	59.03	59.03	308.6	340.9	446.2	431.6	14.59	30.580		
3,400.0	3,396.1	3,362.5	3,337.1	7.5	8.6	56.38	56.38	331.2	337.7	456.1	441.0	15.11	30.182		
3,500.0	3,496.1	3,459.7	3,431.6	7.7	9.0	53.84	53.84	353.8	334.6	467.0	451.3	15.65	29.841		
3,600.0	3,596.1	3,556.9	3,526.1	8.0	9.4	51.42	51.42	376.4	331.5	478.8	462.6	16.20	29.548		
3,700.0	3,696.1	3,654.1	3,620.6	8.2	9.8	49.11	49.11	399.0	328.3	491.4	474.6	16.77	29.296		
3,800.0	3,796.1	3,751.3	3,715.0	8.4	10.2	46.91	46.91	421.6	325.2	504.8	487.5	17.36	29.079		
3,900.0	3,896.1	3,848.6	3,809.5	8.6	10.6	44.83	44.83	444.2	322.0	519.0	501.0	17.96	28.893		
4,000.0	3,996.1	3,945.8	3,904.0	8.8	11.1	42.86	42.86	466.8	318.9	533.7	515.2	18.58	28.734		
4,100.0	4,096.1	4,043.0	3,998.5	9.1	11.5	40.99	40.99	489.4	315.8	549.1	529.9	19.20	28.599		
4,200.0	4,196.1	4,140.2	4,093.0	9.3	11.9	39.23	39.23	512.0	312.6	565.1	545.2	19.84	28.485		
4,300.0	4,296.1	4,237.4	4,187.5	9.5	12.4	37.56	37.56	534.6	309.5	581.5	561.1	20.48	28.389		
4,400.0	4,396.1	4,334.6	4,282.0	9.7	12.8	35.97	35.97	557.1	306.3	598.5	577.3	21.14	28.311		
4,500.0	4,496.1	4,431.8	4,376.5	9.9	13.3	34.48	34.48	579.7	303.2	615.8	594.0	21.80	28.247		
4,600.0	4,596.1	4,529.0	4,471.0	10.2	13.7	33.07	33.07	602.3	300.1	633.6	611.1	22.47	28.197		
4,700.0	4,696.1	4,626.2	4,565.5	10.4	14.1	31.73	31.73	624.9	296.9	651.7	628.5	23.14	28.158		

CC - Min centre to center distance or convergent point, SF - min separation factor, ES - min ellipse separation

Company:	Synergy Resources	Local Co-ordinate Reference:	Well SRC Kelly Farms 12-4-3CHZ
Project:	SEC.4-T5N-R66W	TVD Reference:	WELL @ 4764.5ft (Ensign Rig #131 - RKB -13.5')
Reference Site:	SRC Kelly Farms Pad Sec.4-T5N-R66W	MD Reference:	WELL @ 4764.5ft (Ensign Rig #131 - RKB -13.5')
Site Error:	0.0ft	North Reference:	True
Reference Well:	SRC Kelly Farms 12-4-3CHZ	Survey Calculation Method:	Minimum Curvature
Well Error:	0.0ft	Output errors are at	2.00 sigma
Reference Wellbore	Wellbore #1	Database:	Landmark
Reference Design:	Plan #3 (6-19-14)R	Offset TVD Reference:	Offset Datum

Offset Design Northridge Pad Sec.4-T5N-R66W - Northridge 4ND (Exist.) - Northridge 4ND - Northridge 4ND												Offset Site Error: 0.0 ft		
Survey Program: 0-MWD												Offset Well Error: 0.0 ft		
Reference		Offset		Semi Major Axis			Distance							Warning
Measured Depth (ft)	Vertical Depth (ft)	Measured Depth (ft)	Vertical Depth (ft)	Reference (ft)	Offset (ft)	Highside Toolface (°)	Offset Wellbore Centre +N/-S (ft)	+E/-W (ft)	Between Centres (ft)	Between Ellipses (ft)	Minimum Separation (ft)	Separation Factor		
4,800.0	4,796.1	4,723.4	4,660.0	10.6	14.6	30.46	647.5	293.8	670.1	646.3	23.82	28.130		
4,900.0	4,896.1	4,820.6	4,754.4	10.8	15.1	29.26	670.1	290.7	688.9	664.4	24.51	28.111		
5,000.0	4,996.1	4,923.4	4,854.4	11.0	15.5	28.07	693.9	287.4	707.8	682.6	25.20	28.093		
5,100.0	5,096.1	5,046.6	4,974.9	11.3	15.9	26.88	718.8	283.9	724.6	698.7	25.87	28.008		
5,200.0	5,196.1	5,171.8	5,098.5	11.5	16.3	25.98	738.9	281.1	738.0	711.5	26.50	27.851		
5,300.0	5,296.1	5,298.5	5,224.3	11.7	16.6	25.34	753.7	279.0	747.9	720.8	27.07	27.627		
5,400.0	5,396.1	5,426.4	5,351.8	11.9	16.9	24.95	763.1	277.7	754.1	726.5	27.58	27.346		
5,500.0	5,496.1	5,554.8	5,480.2	12.2	17.1	24.79	766.8	277.2	756.6	728.6	28.02	27.002		
5,600.0	5,596.1	5,659.2	5,584.6	12.4	17.2	24.79	766.9	277.2	756.6	728.2	28.41	26.635		
5,700.0	5,696.1	5,759.2	5,684.6	12.6	17.4	24.79	766.9	277.2	756.6	727.8	28.79	26.277		
5,800.0	5,796.1	5,859.2	5,784.6	12.8	17.6	24.79	766.9	277.2	756.6	727.4	29.18	25.927		
5,900.0	5,896.1	5,959.2	5,884.6	13.0	17.7	24.79	766.9	277.2	756.6	727.0	29.57	25.585		
6,000.0	5,996.1	6,059.2	5,984.6	13.3	17.9	24.79	766.9	277.2	756.6	726.7	29.96	25.250		
6,100.0	6,096.1	6,159.2	6,084.6	13.5	18.0	24.79	766.9	277.2	756.6	726.3	30.36	24.924		
6,200.0	6,196.1	6,259.2	6,184.6	13.7	18.2	24.79	766.9	277.2	756.6	725.9	30.75	24.604		
6,300.0	6,296.1	6,359.2	6,284.6	13.9	18.4	24.79	766.9	277.2	756.6	725.5	31.15	24.292		
6,400.0	6,396.1	6,459.2	6,384.6	14.2	18.5	24.79	766.9	277.2	756.6	725.1	31.54	23.986		
6,446.3	6,442.4	6,505.5	6,430.9	14.3	18.6	24.79	766.9	277.2	756.6	724.9	31.73	23.847		
6,450.0	6,446.1	6,509.2	6,434.6	14.3	18.6	-65.62	766.9	277.2	756.6	726.4	30.25	25.014		
6,500.0	6,496.1	6,559.2	6,484.6	14.4	18.7	-65.80	766.9	277.2	755.9	725.4	30.45	24.825		
6,550.0	6,545.8	6,608.9	6,534.3	14.5	18.8	-66.28	766.9	277.2	753.8	723.2	30.61	24.630		
6,600.0	6,595.1	6,658.2	6,583.6	14.6	18.8	-67.06	766.9	277.2	750.6	719.9	30.73	24.427		
6,650.0	6,643.9	6,707.0	6,632.4	14.6	18.9	-68.13	766.9	277.2	746.2	715.4	30.82	24.211		
6,700.0	6,691.8	6,754.9	6,680.3	14.7	19.0	-69.48	766.9	277.2	740.8	709.9	30.90	23.978		
6,750.0	6,738.7	6,801.8	6,727.2	14.8	19.1	-71.10	766.9	277.2	734.7	703.7	30.97	23.721		
6,800.0	6,784.4	6,847.5	6,772.9	15.0	19.2	-72.96	766.9	277.2	727.9	696.9	31.06	23.437		
6,850.0	6,828.7	6,891.8	6,817.2	15.1	19.2	-75.04	766.9	277.2	720.8	689.6	31.17	23.124		
6,900.0	6,871.5	6,934.6	6,860.0	15.3	19.3	-77.28	766.9	277.2	713.7	682.3	31.32	22.784		
6,950.0	6,912.6	6,975.7	6,901.1	15.5	19.4	-79.64	766.9	277.2	706.8	675.3	31.52	22.422		
7,000.0	6,951.8	7,014.9	6,940.3	15.7	19.4	-82.06	766.9	277.2	700.6	668.8	31.77	22.048		
7,050.0	6,988.9	7,052.0	6,977.4	16.0	19.5	-84.48	766.9	277.2	695.3	663.3	32.08	21.676		
7,100.0	7,023.9	7,087.0	7,012.4	16.3	19.6	-86.82	766.9	277.2	691.5	659.1	32.43	21.319		
7,150.0	7,056.5	7,119.6	7,045.0	16.7	19.6	-89.02	766.9	277.2	689.4	656.6	32.84	20.991		
7,173.8	7,071.1	7,134.3	7,059.6	16.9	19.6	-90.00	766.9	277.2	689.2	656.1	33.06	20.843		
7,200.0	7,086.6	7,149.7	7,075.1	17.2	19.7	-91.01	766.9	277.2	689.5	656.2	33.30	20.702		
7,250.0	7,114.2	7,177.3	7,102.7	17.7	19.7	-92.74	766.9	277.2	692.0	658.2	33.82	20.460		
7,300.0	7,139.1	7,202.2	7,127.6	18.3	19.8	-94.14	766.9	277.2	697.3	662.9	34.41	20.267		
7,350.0	7,161.1	7,224.2	7,149.6	19.0	19.8	-95.17	766.9	277.2	705.5	670.5	35.06	20.123		
7,400.0	7,180.3	7,243.4	7,168.8	19.8	19.8	-95.79	766.9	277.2	716.8	681.0	35.80	20.023		
7,450.0	7,196.5	7,259.6	7,185.0	20.6	19.9	-95.96	766.9	277.2	731.3	694.6	36.63	19.962		
7,500.0	7,209.7	7,272.8	7,198.2	21.5	19.9	-95.66	766.9	277.2	748.8	711.2	37.56	19.936 SF		
7,550.0	7,219.9	7,283.0	7,208.4	22.4	19.9	-94.85	766.9	277.2	769.2	730.6	38.57	19.941		
7,600.0	7,226.9	7,290.0	7,215.4	23.4	19.9	-93.53	766.9	277.2	792.4	752.8	39.66	19.979		
7,650.0	7,230.7	7,293.8	7,219.2	24.4	19.9	-91.66	766.9	277.2	818.2	777.4	40.80	20.056		
7,658.3	7,231.0	7,294.1	7,219.5	24.6	19.9	-91.30	766.9	277.2	822.7	781.7	40.99	20.073		
7,685.9	7,232.0	7,295.1	7,220.5	25.2	19.9	-91.38	766.9	277.2	838.1	796.5	41.56	20.163		
7,700.0	7,232.5	7,295.6	7,221.0	25.5	19.9	-91.22	766.9	277.2	846.2	804.3	41.87	20.208		
7,788.5	7,233.8	7,296.9	7,222.3	27.4	19.9	-89.98	766.9	277.2	900.2	856.3	43.85	20.528		
7,800.0	7,233.8	7,296.9	7,222.3	27.6	19.9	-89.98	766.9	277.2	907.6	863.5	44.11	20.576		
7,900.0	7,233.7	7,296.8	7,222.2	29.9	19.9	-89.98	766.9	277.2	975.2	928.8	46.40	21.016		

CC - Min centre to center distance or convergent point, SF - min separation factor, ES - min ellipse separation

Company:	Synergy Resources	Local Co-ordinate Reference:	Well SRC Kelly Farms 12-4-3CHZ
Project:	SEC.4-T5N-R66W	TVD Reference:	WELL @ 4764.5ft (Ensign Rig #131 - RKB -13.5')
Reference Site:	SRC Kelly Farms Pad Sec.4-T5N-R66W	MD Reference:	WELL @ 4764.5ft (Ensign Rig #131 - RKB -13.5')
Site Error:	0.0ft	North Reference:	True
Reference Well:	SRC Kelly Farms 12-4-3CHZ	Survey Calculation Method:	Minimum Curvature
Well Error:	0.0ft	Output errors are at	2.00 sigma
Reference Wellbore	Wellbore #1	Database:	Landmark
Reference Design:	Plan #3 (6-19-14)R	Offset TVD Reference:	Offset Datum

Company:	Synergy Resources	Local Co-ordinate Reference:	Well SRC Kelly Farms 12-4-3CHZ
Project:	SEC.4-T5N-R66W	TVD Reference:	WELL @ 4764.5ft (Ensign Rig #131 - RKB -13.5')
Reference Site:	SRC Kelly Farms Pad Sec.4-T5N-R66W	MD Reference:	WELL @ 4764.5ft (Ensign Rig #131 - RKB -13.5')
Site Error:	0.0ft	North Reference:	True
Reference Well:	SRC Kelly Farms 12-4-3CHZ	Survey Calculation Method:	Minimum Curvature
Well Error:	0.0ft	Output errors are at	2.00 sigma
Reference Wellbore	Wellbore #1	Database:	Landmark
Reference Design:	Plan #3 (6-19-14)R	Offset TVD Reference:	Offset Datum

Offset Design													Offset Site Error:	0.0ft
Survey Program: 80-MWD													Offset Well Error:	0.0ft
Reference		Offset		Semi Major Axis			Distance							Warning
Measured Depth (ft)	Vertical Depth (ft)	Measured Depth (ft)	Vertical Depth (ft)	Reference (ft)	Offset (ft)	Highside Toolface (°)	Offset Wellbore Centre +N/-S (ft)	+E/-W (ft)	Between Centres (ft)	Between Ellipses (ft)	Minimum Separation (ft)	Separation Factor		
0.0	0.0	3.0	3.0	0.0	0.0	-101.52	-8.0	-39.3	40.1	40.1	0.00	N/A CC		
100.0	100.0	102.6	102.6	0.1	0.1	-102.92	-9.1	-39.5	40.6	40.3	0.25	159.326		
200.0	200.0	202.5	202.5	0.3	0.4	-105.11	-10.9	-40.3	41.7	41.0	0.70	59.821		
300.0	300.0	302.7	302.6	0.6	0.6	-106.97	-12.5	-40.9	42.7	41.6	1.13	37.954		
400.0	400.0	402.7	402.7	0.8	0.8	-108.66	-13.9	-41.3	43.6	42.0	1.56	27.999		
500.0	500.0	502.4	502.3	1.0	1.0	-110.00	-15.2	-41.8	44.4	42.5	1.99	22.324		
600.0	600.0	601.5	601.4	1.2	1.2	-112.33	-17.8	-43.4	46.9	44.5	2.43	19.305		
700.0	700.0	700.6	700.4	1.5	1.4	-116.04	-22.4	-45.9	51.1	48.3	2.88	17.755		
800.0	800.0	800.4	799.8	1.7	1.7	-122.07	-30.1	-48.1	56.8	53.5	3.34	17.019		
900.0	900.0	900.6	899.7	1.9	1.9	-128.78	-39.0	-48.5	62.3	58.5	3.81	16.358		
1,000.0	1,000.0	1,001.5	1,000.0	2.1	2.2	-136.85	-49.1	-46.0	67.3	63.0	4.28	15.714		
1,100.0	1,100.0	1,102.5	1,100.4	2.4	2.4	-119.75	-58.5	-40.7	72.1	67.4	4.68	15.426		
1,200.0	1,199.8	1,202.3	1,199.9	2.6	2.7	-128.15	-65.0	-36.5	78.7	73.6	5.10	15.447		
1,276.7	1,276.3	1,278.7	1,276.2	2.8	2.8	-133.63	-68.8	-34.6	85.7	80.3	5.42	15.829		
1,300.0	1,299.5	1,301.9	1,299.4	2.8	2.9	-135.20	-69.8	-34.1	88.1	82.6	5.51	15.982		
1,400.0	1,399.0	1,401.0	1,398.3	3.1	3.1	-141.57	-74.2	-31.2	98.8	92.9	5.94	16.625		
1,500.0	1,498.5	1,497.4	1,494.4	3.3	3.3	-147.08	-79.9	-27.4	112.0	105.6	6.38	17.550		
1,600.0	1,598.1	1,597.3	1,594.1	3.6	3.6	-151.50	-85.9	-23.6	126.0	119.2	6.82	18.481		
1,700.0	1,697.6	1,696.1	1,692.6	3.8	3.8	-154.93	-91.7	-20.0	140.5	133.2	7.25	19.367		
1,800.0	1,797.1	1,796.8	1,793.2	4.1	4.0	-157.51	-96.4	-17.1	154.1	146.4	7.69	20.029		
1,900.0	1,896.7	1,894.8	1,891.0	4.3	4.2	-159.69	-100.9	-14.0	167.9	159.7	8.13	20.650		
1,927.2	1,923.7	1,921.3	1,917.6	4.4	4.3	-160.24	-102.2	-13.2	171.7	163.5	8.25	20.821		
2,000.0	1,996.3	1,992.6	1,988.7	4.6	4.5	-161.63	-105.8	-10.6	181.5	173.0	8.56	21.211		
2,100.0	2,096.1	2,092.3	2,088.1	4.8	4.7	-163.43	-111.1	-5.6	192.6	183.7	8.96	21.512		
2,203.9	2,200.0	2,194.8	2,190.3	5.0	5.0	168.52	-116.0	-0.2	200.4	190.5	9.89	20.263		
2,300.0	2,296.1	2,287.8	2,283.0	5.1	5.2	167.63	-121.7	4.3	207.2	196.9	10.30	20.106		
2,400.0	2,396.1	2,387.1	2,382.1	5.4	5.4	166.91	-128.9	8.6	215.2	204.4	10.76	19.990		
2,500.0	2,496.1	2,489.3	2,483.9	5.6	5.7	166.14	-135.6	13.2	222.6	211.4	11.23	19.828		
2,600.0	2,596.1	2,590.3	2,584.6	5.8	5.9	165.38	-141.3	17.7	229.2	217.5	11.68	19.619		
2,700.0	2,696.1	2,688.8	2,682.9	6.0	6.2	164.97	-147.1	21.0	235.7	223.6	12.13	19.436		
2,800.0	2,796.1	2,785.0	2,778.8	6.2	6.4	164.91	-154.2	23.1	243.4	230.9	12.58	19.349		
2,900.0	2,896.1	2,886.4	2,879.9	6.4	6.6	164.96	-162.3	25.1	251.6	238.6	13.05	19.285		
3,000.0	2,996.1	2,992.2	2,985.4	6.6	6.9	164.88	-168.6	27.1	257.9	244.3	13.51	19.083		
3,100.0	3,096.1	3,094.2	3,087.4	6.9	7.1	164.81	-173.3	28.8	262.8	248.8	13.96	18.826		
3,200.0	3,196.1	3,200.7	3,193.7	7.1	7.3	164.81	-177.0	29.8	266.3	251.9	14.40	18.494		
3,300.0	3,296.1	3,304.1	3,297.2	7.3	7.6	164.82	-178.1	30.0	267.4	252.6	14.83	18.035		
3,400.0	3,396.1	3,404.2	3,397.3	7.5	7.7	164.79	-178.7	30.3	268.1	252.8	15.24	17.590		
3,500.0	3,496.1	3,504.4	3,497.4	7.7	7.9	164.71	-179.2	30.9	268.7	253.1	15.66	17.165		
3,600.0	3,596.1	3,604.1	3,597.2	8.0	8.1	164.49	-179.6	32.1	269.4	253.4	16.07	16.765		
3,700.0	3,696.1	3,705.3	3,698.3	8.2	8.3	164.26	-179.8	33.2	269.9	253.4	16.49	16.367		
3,800.0	3,796.1	3,805.2	3,798.2	8.4	8.5	164.02	-179.7	34.4	270.2	253.3	16.91	15.979		
3,900.0	3,896.1	3,905.4	3,898.5	8.6	8.7	163.78	-179.8	35.6	270.5	253.2	17.32	15.616		
4,000.0	3,996.1	4,005.1	3,998.1	8.8	8.9	163.61	-179.7	36.4	270.7	253.0	17.74	15.261		
4,100.0	4,096.1	4,100.4	4,093.4	9.1	9.1	163.52	-180.6	37.1	271.8	253.6	18.15	14.972		
4,200.0	4,196.1	4,205.2	4,198.2	9.3	9.3	163.48	-182.2	37.8	273.4	254.9	18.59	14.712		
4,300.0	4,296.1	4,305.7	4,298.7	9.5	9.5	163.49	-182.3	37.8	273.6	254.6	19.01	14.396		
4,400.0	4,396.1	4,406.1	4,399.1	9.7	9.7	163.50	-182.4	37.7	273.7	254.3	19.42	14.089		
4,500.0	4,496.1	4,506.5	4,499.5	9.9	9.9	163.50	-182.4	37.7	273.7	253.8	19.84	13.791		
4,600.0	4,596.1	4,607.3	4,600.2	10.2	10.1	163.60	-182.2	37.2	273.3	253.1	20.26	13.490		
4,700.0	4,696.1	4,707.2	4,700.2	10.4	10.3	163.75	-182.0	36.4	272.9	252.2	20.68	13.197		
4,800.0	4,796.1	4,807.1	4,800.1	10.6	10.5	163.84	-181.8	35.8	272.5	251.4	21.10	12.918		

CC - Min centre to center distance or convergent point, SF - min separation factor, ES - min ellipse separation

Company:	Synergy Resources	Local Co-ordinate Reference:	Well SRC Kelly Farms 12-4-3CHZ
Project:	SEC.4-T5N-R66W	TVD Reference:	WELL @ 4764.5ft (Ensign Rig #131 - RKB -13.5')
Reference Site:	SRC Kelly Farms Pad Sec.4-T5N-R66W	MD Reference:	WELL @ 4764.5ft (Ensign Rig #131 - RKB -13.5')
Site Error:	0.0ft	North Reference:	True
Reference Well:	SRC Kelly Farms 12-4-3CHZ	Survey Calculation Method:	Minimum Curvature
Well Error:	0.0ft	Output errors are at	2.00 sigma
Reference Wellbore	Wellbore #1	Database:	Landmark
Reference Design:	Plan #3 (6-19-14)R	Offset TVD Reference:	Offset Datum

Offset Design		SRC Kelly Farms Pad Sec.4-T5N-R66W - SRC Kelly Farms 22-4-3CHZ - Wellbore #1 - Wellbore #1										Offset Site Error:		0.0 ft			
Survey Program: 80-MWD														Offset Well Error:		0.0 ft	
Reference		Offset		Semi Major Axis			Distance							Warning			
Measured Depth (ft)	Vertical Depth (ft)	Measured Depth (ft)	Vertical Depth (ft)	Reference (ft)	Offset (ft)	Highside Toolface (°)	Offset Wellbore Centre +N/-S (ft)	+E/-W (ft)	Between Centres (ft)	Between Ellipses (ft)	Minimum Separation (ft)	Separation Factor					
4,900.0	4,896.1	4,907.8	4,900.8	10.8	10.7	163.81	-181.3	35.9	272.1	250.6	21.52	12.646					
5,000.0	4,996.1	5,008.0	5,001.0	11.0	10.9	163.74	-180.5	36.0	271.4	249.4	21.93	12.373					
5,100.0	5,096.1	5,107.0	5,100.0	11.3	11.1	163.78	-180.1	35.6	270.9	248.5	22.35	12.119					
5,200.0	5,196.1	5,206.2	5,199.2	11.5	11.3	163.90	-180.0	35.1	270.6	247.9	22.77	11.886					
5,205.6	5,201.7	5,211.7	5,204.7	11.5	11.3	163.91	-180.0	35.0	270.6	247.8	22.79	11.873					
5,300.0	5,296.1	5,304.4	5,297.4	11.7	11.5	164.01	-180.5	34.6	271.0	247.8	23.19	11.684					
5,400.0	5,396.1	5,404.1	5,397.1	11.9	11.7	164.15	-181.5	34.2	271.8	248.2	23.62	11.508					
5,500.0	5,496.1	5,510.7	5,503.6	12.2	11.9	164.31	-181.6	33.5	271.8	247.7	24.05	11.299					
5,600.0	5,596.1	5,613.3	5,606.2	12.4	12.1	164.33	-179.0	32.7	269.0	244.6	24.47	10.995					
5,700.0	5,696.1	5,710.6	5,703.5	12.6	12.3	164.37	-177.0	31.9	266.9	242.0	24.88	10.727					
5,800.0	5,796.1	5,807.8	5,800.7	12.8	12.5	164.46	-176.0	31.2	265.7	240.5	25.29	10.507					
5,873.1	5,869.2	5,879.4	5,872.2	13.0	12.6	164.56	-176.0	30.7	265.5	239.9	25.60	10.372					
5,900.0	5,896.1	5,905.7	5,898.6	13.0	12.7	164.62	-176.0	30.5	265.6	239.8	25.71	10.327					
6,000.0	5,996.1	6,004.9	5,997.8	13.3	12.9	164.85	-176.6	29.5	265.9	239.7	26.14	10.171					
6,100.0	6,096.1	6,103.5	6,096.4	13.5	13.1	165.08	-177.6	28.6	266.6	240.1	26.57	10.036					
6,200.0	6,196.1	6,204.1	6,196.9	13.7	13.3	165.37	-179.1	27.6	267.8	240.8	27.00	9.917					
6,300.0	6,296.1	6,306.1	6,299.0	13.9	13.5	165.34	-179.3	27.8	268.0	240.6	27.43	9.770					
6,400.0	6,396.1	6,405.9	6,398.8	14.2	13.7	165.31	-179.3	28.0	268.1	240.2	27.86	9.624					
6,446.3	6,442.4	6,451.7	6,444.6	14.3	13.8	165.09	-179.2	29.0	268.2	240.1	28.06	9.559					
6,450.0	6,446.1	6,455.4	6,448.2	14.3	13.8	74.65	-179.1	29.1	268.2	240.5	27.71	9.679					
6,500.0	6,496.1	6,504.0	6,496.8	14.4	13.9	74.41	-178.7	32.0	268.0	240.1	27.91	9.603					
6,550.0	6,545.8	6,552.2	6,544.7	14.5	14.0	74.41	-177.9	36.8	267.2	239.1	28.10	9.510					
6,600.0	6,595.1	6,599.9	6,591.8	14.6	14.1	74.58	-177.0	43.9	266.0	237.7	28.29	9.402					
6,650.0	6,643.9	6,646.5	6,637.6	14.6	14.2	74.88	-175.9	53.2	264.5	236.0	28.49	9.284					
6,700.0	6,691.8	6,692.7	6,682.2	14.7	14.3	75.31	-174.8	64.6	262.8	234.1	28.69	9.161					
6,750.0	6,738.7	6,739.3	6,726.8	14.8	14.5	75.89	-173.8	78.5	261.0	232.1	28.91	9.031					
6,800.0	6,784.4	6,786.3	6,770.9	15.0	14.6	76.66	-172.9	94.5	259.1	230.0	29.15	8.889					
6,850.0	6,828.7	6,830.5	6,811.6	15.1	14.7	77.52	-172.1	111.7	257.2	227.8	29.43	8.742					
6,900.0	6,871.5	6,874.3	6,850.7	15.3	14.9	78.34	-171.9	131.3	256.0	226.2	29.74	8.607					
6,950.0	6,912.6	6,916.9	6,887.6	15.5	15.1	79.17	-172.2	152.6	255.3	225.2	30.12	8.479					
6,958.6	6,919.4	6,924.2	6,893.8	15.5	15.1	79.32	-172.3	156.4	255.3	225.1	30.19	8.458					
7,000.0	6,951.8	6,959.3	6,923.4	15.7	15.3	80.13	-173.4	175.5	255.7	225.1	30.55	8.369					
7,050.0	6,988.9	7,008.4	6,963.3	16.0	15.5	81.40	-175.4	203.9	256.5	225.4	31.12	8.242					
7,100.0	7,023.9	7,060.7	7,004.1	16.3	15.8	82.83	-176.6	236.5	256.7	224.9	31.80	8.071					
7,150.0	7,056.5	7,115.0	7,044.0	16.7	16.2	84.25	-176.7	273.4	255.8	223.2	32.65	7.835					
7,200.0	7,086.6	7,166.1	7,078.3	17.2	16.7	85.36	-175.5	311.1	254.0	220.4	33.58	7.562					
7,250.0	7,114.2	7,210.0	7,104.7	17.7	17.1	86.05	-174.7	346.2	252.6	218.0	34.59	7.302					
7,300.0	7,139.1	7,255.2	7,128.5	18.3	17.6	86.42	-174.7	384.7	252.2	216.4	35.72	7.058					
7,320.3	7,148.4	7,274.4	7,137.7	18.6	17.9	86.52	-174.8	401.5	252.1	215.9	36.26	6.954					
7,350.0	7,161.1	7,302.6	7,150.2	19.0	18.2	86.63	-175.1	426.8	252.2	215.1	37.04	6.808					
7,400.0	7,180.3	7,349.6	7,168.9	19.8	18.9	86.75	-175.8	469.9	252.6	214.1	38.47	6.566					
7,450.0	7,196.5	7,395.6	7,185.6	20.6	19.6	87.13	-177.0	512.8	253.4	213.4	40.03	6.331					
7,500.0	7,209.7	7,442.1	7,200.7	21.5	20.4	87.70	-178.9	556.7	255.0	213.3	41.72	6.112					
7,550.0	7,219.9	7,491.1	7,214.1	22.4	21.3	88.40	-181.2	603.8	256.9	213.3	43.57	5.896					
7,600.0	7,226.9	7,541.3	7,224.4	23.4	22.3	89.01	-183.5	652.8	258.7	213.2	45.53	5.683					
7,650.0	7,230.7	7,593.2	7,229.3	24.4	23.3	89.10	-185.5	704.5	260.3	212.6	47.62	5.466					
7,658.3	7,231.0	7,601.5	7,229.7	24.6	23.5	89.10	-185.7	712.7	260.5	212.5	47.96	5.431					
7,685.9	7,232.0	7,628.9	7,230.5	25.2	24.1	89.07	-186.7	740.1	261.3	212.1	49.12	5.319					
7,700.0	7,232.5	7,643.0	7,230.6	25.5	24.4	88.98	-187.2	754.1	261.7	211.9	49.71	5.264					
7,788.5	7,233.8	7,733.2	7,228.4	27.4	26.3	88.18	-189.8	844.3	264.0	210.4	53.59	4.926					

CC - Min centre to center distance or convergent point, SF - min separation factor, ES - min ellipse separation

Company:	Synergy Resources	Local Co-ordinate Reference:	Well SRC Kelly Farms 12-4-3CHZ
Project:	SEC.4-T5N-R66W	TVD Reference:	WELL @ 4764.5ft (Ensign Rig #131 - RKB -13.5')
Reference Site:	SRC Kelly Farms Pad Sec.4-T5N-R66W	MD Reference:	WELL @ 4764.5ft (Ensign Rig #131 - RKB -13.5')
Site Error:	0.0ft	North Reference:	True
Reference Well:	SRC Kelly Farms 12-4-3CHZ	Survey Calculation Method:	Minimum Curvature
Well Error:	0.0ft	Output errors are at	2.00 sigma
Reference Wellbore	Wellbore #1	Database:	Landmark
Reference Design:	Plan #3 (6-19-14)R	Offset TVD Reference:	Offset Datum

Offset Design										SRC Kelly Farms Pad Sec.4-T5N-R66W - SRC Kelly Farms 22-4-3CHZ - Wellbore #1 - Wellbore #1				Offset Site Error:		0.0 ft
Survey Program: 80-MWD														Offset Well Error:		0.0 ft
Reference		Offset		Semi Major Axis			Distance							Warning		
Measured Depth (ft)	Vertical Depth (ft)	Measured Depth (ft)	Vertical Depth (ft)	Reference (ft)	Offset (ft)	Highside Toolface (°)	Offset Wellbore Centre +N/-S (ft)	+E/-W (ft)	Between Centres (ft)	Between Ellipses (ft)	Minimum Separation (ft)	Separation Factor				
7,800.0	7,233.8	7,744.1	7,228.2	27.6	26.6	88.15	-190.1	855.2	264.3	210.2	54.09	4.887				
7,900.0	7,233.7	7,850.7	7,226.8	29.9	29.0	87.85	-192.0	961.8	266.0	207.2	58.82	4.522				
8,000.0	7,233.7	7,947.2	7,226.0	32.3	31.3	87.70	-192.6	1,058.2	266.5	203.0	63.49	4.198				
8,100.0	7,233.6	8,063.5	7,224.8	34.8	34.2	87.47	-193.9	1,174.5	267.9	199.2	68.77	3.896				
8,200.0	7,233.6	8,164.1	7,227.2	37.3	36.7	87.96	-188.7	1,274.9	262.5	188.7	73.80	3.557				
8,300.0	7,233.6	8,256.9	7,228.8	39.8	39.0	88.29	-187.0	1,367.7	260.5	181.7	78.71	3.309				
8,400.0	7,233.5	8,355.5	7,229.9	42.4	41.6	88.53	-185.3	1,466.3	258.6	174.8	83.83	3.085				
8,500.0	7,233.5	8,454.0	7,230.4	45.0	44.1	88.66	-184.5	1,564.8	257.7	168.7	89.00	2.895				
8,600.0	7,233.4	8,552.2	7,231.6	47.6	46.7	88.92	-184.3	1,662.9	257.3	163.1	94.21	2.731				
8,601.2	7,233.4	8,553.3	7,231.6	47.6	46.7	88.92	-184.3	1,664.1	257.3	163.0	94.27	2.729				
8,700.0	7,233.4	8,651.3	7,232.5	50.2	49.3	89.14	-184.6	1,762.1	257.4	157.9	99.48	2.588				
8,800.0	7,233.3	8,748.2	7,232.6	52.9	51.9	89.18	-185.8	1,859.0	258.6	153.8	104.73	2.469				
8,900.0	7,233.3	8,852.0	7,231.8	55.5	54.7	88.99	-186.5	1,962.7	259.1	149.0	110.18	2.352				
9,000.0	7,233.3	8,953.7	7,230.7	58.2	57.4	88.78	-186.6	2,064.5	259.1	143.5	115.59	2.241				
9,100.0	7,233.2	9,054.6	7,231.5	60.9	60.2	88.95	-185.6	2,165.3	258.0	137.0	121.02	2.132				
9,200.0	7,233.2	9,155.5	7,231.6	63.6	62.9	88.98	-184.9	2,266.2	257.1	130.6	126.46	2.033				
9,300.0	7,233.1	9,260.9	7,231.1	66.4	65.7	88.86	-182.6	2,371.6	254.9	122.9	132.03	1.931				
9,376.4	7,233.1	9,328.6	7,230.4	68.4	67.6	88.72	-181.4	2,439.3	253.4	117.4	135.94	1.864				
9,400.0	7,233.1	9,349.1	7,230.1	69.1	68.1	88.65	-181.5	2,459.8	253.5	116.4	137.14	1.849				
9,500.0	7,233.1	9,450.8	7,228.9	71.8	70.9	88.39	-182.8	2,561.5	254.8	112.1	142.63	1.786				
9,600.0	7,233.0	9,551.6	7,228.0	74.5	73.7	88.21	-183.3	2,662.2	255.2	107.0	148.11	1.723				
9,700.0	7,233.0	9,652.2	7,226.6	77.3	76.4	87.89	-183.7	2,762.9	255.4	101.8	153.58	1.663				
9,800.0	7,232.9	9,752.8	7,225.1	80.0	79.2	87.56	-183.4	2,863.4	255.1	96.0	159.05	1.604				
9,819.1	7,232.9	9,771.4	7,224.7	80.6	79.7	87.48	-183.4	2,882.0	255.0	95.0	160.08	1.593				
9,900.0	7,232.9	9,852.2	7,222.9	82.8	81.9	87.09	-183.5	2,962.8	255.2	90.7	164.47	1.552				
10,000.0	7,232.8	9,953.5	7,221.1	85.5	84.7	86.68	-183.3	3,064.1	255.0	85.0	169.95	1.500				
10,100.0	7,232.8	10,058.2	7,220.4	88.3	87.6	86.53	-182.2	3,168.7	253.8	78.2	175.55	1.446 Level 3				
10,200.0	7,232.8	10,156.0	7,220.8	91.1	90.3	86.59	-180.3	3,266.5	251.7	70.7	181.01	1.391 Level 3				
10,300.0	7,232.7	10,254.8	7,221.7	93.8	93.0	86.79	-179.3	3,365.4	250.5	64.0	186.53	1.343 Level 3				
10,371.7	7,232.7	10,324.1	7,222.2	95.8	94.9	86.92	-179.1	3,434.6	250.2	59.7	190.44	1.314 Level 3				
10,400.0	7,232.7	10,351.9	7,222.4	96.6	95.7	86.96	-179.1	3,462.5	250.2	58.2	192.00	1.303 Level 3				
10,500.0	7,232.6	10,451.7	7,223.4	99.4	98.5	87.20	-179.5	3,562.3	250.4	52.8	197.57	1.267 Level 3				
10,600.0	7,232.6	10,550.2	7,224.4	102.1	101.2	87.44	-180.2	3,660.7	250.9	47.8	203.10	1.235 Level 2				
10,700.0	7,232.6	10,649.8	7,224.8	104.9	104.0	87.56	-181.5	3,760.4	252.1	43.4	208.65	1.208 Level 2				
10,800.0	7,232.5	10,753.5	7,224.4	107.7	106.8	87.48	-182.0	3,864.0	252.5	38.2	214.29	1.178 Level 2				
10,900.0	7,232.5	10,854.7	7,223.4	110.4	109.6	87.24	-181.2	3,965.3	251.6	31.8	219.83	1.144 Level 2				
11,000.0	7,232.4	10,954.1	7,222.4	113.2	112.4	87.02	-180.5	4,064.6	250.8	25.5	225.31	1.113 Level 2				
11,100.0	7,232.4	11,054.7	7,222.1	116.0	115.2	86.95	-179.8	4,165.2	250.0	19.1	230.86	1.083 Level 2				
11,138.7	7,232.4	11,091.1	7,221.9	117.1	116.2	86.92	-179.7	4,201.6	249.8	16.9	232.94	1.072 Level 2				
11,200.0	7,232.3	11,149.9	7,222.2	118.8	117.8	87.00	-180.1	4,260.4	250.2	13.9	236.29	1.059 Level 2				
11,300.0	7,232.3	11,255.5	7,223.4	121.6	120.8	87.28	-180.0	4,366.0	249.9	7.8	242.06	1.032 Level 2				
11,400.0	7,232.3	11,356.2	7,225.0	124.4	123.6	87.63	-178.8	4,466.6	248.4	0.7	247.70	1.003 Level 2				
11,500.0	7,232.2	11,454.0	7,224.7	127.1	126.3	87.56	-177.7	4,564.4	247.3	-5.9	253.18	0.977 Level 1				
11,539.5	7,232.2	11,491.9	7,224.3	128.2	127.4	87.46	-177.6	4,602.4	247.1	-8.2	255.32	0.968 Level 1				
11,600.0	7,232.2	11,552.2	7,223.5	129.9	129.0	87.30	-177.7	4,662.7	247.2	-11.5	258.65	0.956 Level 1				
11,700.0	7,232.1	11,653.5	7,222.3	132.7	131.9	87.02	-177.7	4,763.9	247.1	-17.1	264.19	0.935 Level 1				
11,800.0	7,232.1	11,754.7	7,221.2	135.5	134.7	86.78	-177.1	4,865.2	246.4	-23.3	269.73	0.914 Level 1				
11,900.0	7,232.1	11,856.1	7,220.3	138.3	137.5	86.55	-176.0	4,966.5	245.3	-30.0	275.27	0.891 Level 1				
12,000.0	7,232.0	11,956.7	7,218.1	141.1	140.3	86.01	-174.3	5,067.0	243.6	-37.0	280.68	0.868 Level 1				
12,013.4	7,232.0	11,966.0	7,217.8	141.4	140.5	85.95	-174.1	5,076.4	243.4	-37.9	281.29	0.865 Level 1, ES, SF				
12,034.4	7,232.0	11,966.0	7,217.8	142.0	140.5	85.95	-174.1	5,076.4	244.3	-37.5	281.88	0.867 Level 1				

CC - Min centre to center distance or convergent point, SF - min separation factor, ES - min ellipse separation

Company:	Synergy Resources	Local Co-ordinate Reference:	Well SRC Kelly Farms 12-4-3CHZ
Project:	SEC.4-T5N-R66W	TVD Reference:	WELL @ 4764.5ft (Ensign Rig #131 - RKB -13.5')
Reference Site:	SRC Kelly Farms Pad Sec.4-T5N-R66W	MD Reference:	WELL @ 4764.5ft (Ensign Rig #131 - RKB -13.5')
Site Error:	0.0ft	North Reference:	True
Reference Well:	SRC Kelly Farms 12-4-3CHZ	Survey Calculation Method:	Minimum Curvature
Well Error:	0.0ft	Output errors are at	2.00 sigma
Reference Wellbore	Wellbore #1	Database:	Landmark
Reference Design:	Plan #3 (6-19-14)R	Offset TVD Reference:	Offset Datum

Offset Design													Offset Site Error:	0.0 ft
SRC Kelly Farms Pad Sec.4-T5N-R66W - SRC Kelly Farms 22-4-3CHZ - Wellbore #1 - Wellbore #1													Offset Well Error:	0.0 ft
Survey Program: 80-MWD														
Reference		Offset		Semi Major Axis			Distance							
Measured Depth (ft)	Vertical Depth (ft)	Measured Depth (ft)	Vertical Depth (ft)	Reference (ft)	Offset (ft)	Highside Toolface (°)	Offset Wellbore Centre +N/-S (ft)	Wellbore Centre +E/-W (ft)	Between Centres (ft)	Between Ellipses (ft)	Minimum Separation (ft)	Separation Factor	Warning	
12,034.8	7,232.0	11,966.0	7,217.8	142.0	140.5	85.95	-174.1	5,076.4	244.4	-37.5	281.89	0.867	Level 1	

Company:	Synergy Resources	Local Co-ordinate Reference:	Well SRC Kelly Farms 12-4-3CHZ
Project:	SEC.4-T5N-R66W	TVD Reference:	WELL @ 4764.5ft (Ensign Rig #131 - RKB -13.5')
Reference Site:	SRC Kelly Farms Pad Sec.4-T5N-R66W	MD Reference:	WELL @ 4764.5ft (Ensign Rig #131 - RKB -13.5')
Site Error:	0.0ft	North Reference:	True
Reference Well:	SRC Kelly Farms 12-4-3CHZ	Survey Calculation Method:	Minimum Curvature
Well Error:	0.0ft	Output errors are at	2.00 sigma
Reference Wellbore	Wellbore #1	Database:	Landmark
Reference Design:	Plan #3 (6-19-14)R	Offset TVD Reference:	Offset Datum

Offset Design													Offset Site Error:	0.0ft
Survey Program: 79-MWD													Offset Well Error:	0.0ft
Reference		Offset		Semi Major Axis			Distance							Warning
Measured Depth (ft)	Vertical Depth (ft)	Measured Depth (ft)	Vertical Depth (ft)	Reference (ft)	Offset (ft)	Highside Toolface (°)	Offset Wellbore Centre +N/-S (ft)	+E/-W (ft)	Between Centres (ft)	Between Ellipses (ft)	Minimum Separation (ft)	Separation Factor		
0.0	0.0	1.0	1.0	0.0	0.0	-11.33	22.2	-4.5	22.7	22.7	0.00	N/A CC		
100.0	100.0	101.0	101.0	0.1	0.1	-11.58	22.3	-4.6	22.7	22.5	0.25	91.377		
200.0	200.0	200.9	200.9	0.3	0.4	-11.83	22.5	-4.7	23.0	22.3	0.69	33.327		
300.0	300.0	300.9	300.9	0.6	0.6	-11.88	23.1	-4.9	23.6	22.4	1.13	20.898		
400.0	400.0	401.0	401.0	0.8	0.8	-12.06	23.3	-5.0	23.8	22.3	1.56	15.326		
500.0	500.0	501.0	501.0	1.0	1.0	-13.44	23.1	-5.5	23.8	21.8	1.98	11.981		
569.7	569.7	570.7	570.7	1.2	1.1	-14.48	22.9	-5.9	23.6	21.3	2.28	10.341		
600.0	600.0	600.9	600.9	1.2	1.2	-14.62	22.9	-6.0	23.7	21.3	2.42	9.812 ES		
700.0	700.0	700.5	700.5	1.5	1.4	-12.84	24.3	-5.5	25.0	22.1	2.85	8.759		
800.0	800.0	799.9	799.8	1.7	1.6	-8.45	27.7	-4.1	28.0	24.7	3.29	8.518		
900.0	900.0	898.7	898.4	1.9	1.8	-4.24	33.7	-2.5	33.9	30.2	3.73	9.086		
1,000.0	1,000.0	997.1	996.3	2.1	2.1	-0.50	43.1	-0.4	43.3	39.1	4.18	10.363		
1,100.0	1,100.0	1,095.4	1,093.9	2.4	2.3	29.57	54.8	2.1	53.8	49.2	4.62	11.640		
1,200.0	1,199.8	1,195.3	1,193.0	2.6	2.6	33.66	67.8	4.8	62.6	57.5	5.06	12.374		
1,276.7	1,276.3	1,271.3	1,268.3	2.8	2.8	37.03	77.5	6.5	67.3	61.9	5.39	12.494		
1,300.0	1,299.5	1,294.3	1,291.0	2.8	2.8	37.98	80.6	6.9	68.7	63.2	5.49	12.512		
1,400.0	1,399.0	1,394.6	1,390.4	3.1	3.1	41.41	94.1	8.1	74.7	68.8	5.95	12.561		
1,500.0	1,498.5	1,496.3	1,491.4	3.3	3.4	43.98	106.2	8.3	79.1	72.7	6.41	12.340		
1,600.0	1,598.1	1,595.7	1,590.2	3.6	3.7	45.94	117.1	7.7	82.6	75.7	6.88	11.993		
1,700.0	1,697.6	1,693.2	1,686.8	3.8	4.0	47.62	129.9	7.8	88.3	81.0	7.37	11.986		
1,800.0	1,797.1	1,791.7	1,784.4	4.1	4.3	49.91	143.6	9.7	95.6	87.7	7.86	12.157		
1,900.0	1,896.7	1,889.9	1,881.4	4.3	4.6	52.27	158.7	13.0	105.0	96.6	8.37	12.548		
1,927.2	1,923.7	1,917.3	1,908.4	4.4	4.7	52.73	163.1	13.8	107.6	99.1	8.51	12.647		
2,000.0	1,996.3	1,990.4	1,980.6	4.6	4.9	53.44	174.4	15.3	114.8	105.9	8.85	12.966		
2,100.0	2,096.1	2,089.8	2,078.8	4.8	5.2	53.99	188.8	18.7	126.1	116.8	9.27	13.600		
2,203.9	2,200.0	2,194.2	2,182.2	5.0	5.5	27.17	203.2	23.3	139.8	129.5	10.27	13.616		
2,300.0	2,296.1	2,288.6	2,275.7	5.1	5.8	26.17	215.7	26.7	152.7	141.9	10.76	14.195		
2,400.0	2,396.1	2,387.5	2,373.6	5.4	6.1	25.65	229.0	31.5	166.9	155.6	11.29	14.786		
2,500.0	2,496.1	2,483.2	2,468.2	5.6	6.5	25.02	242.5	35.9	181.7	169.9	11.82	15.366		
2,600.0	2,596.1	2,583.4	2,567.2	5.8	6.8	24.76	257.3	41.8	197.5	185.1	12.38	15.957		
2,700.0	2,696.1	2,683.7	2,666.4	6.0	7.1	24.27	271.5	46.3	212.3	199.4	12.92	16.428		
2,800.0	2,796.1	2,783.3	2,764.9	6.2	7.4	23.75	285.5	50.4	226.8	213.3	13.47	16.839		
2,900.0	2,896.1	2,891.3	2,872.0	6.4	7.7	23.28	298.4	54.0	239.1	225.1	14.01	17.064		
3,000.0	2,996.1	2,999.3	2,979.5	6.6	8.0	23.06	307.5	56.9	247.9	233.4	14.51	17.085		
3,100.0	3,096.1	3,110.5	3,090.7	6.9	8.3	22.88	313.0	58.3	252.9	238.0	14.97	16.895		
3,200.0	3,196.1	3,220.2	3,200.4	7.1	8.4	23.00	313.2	59.0	253.4	238.0	15.38	16.476		
3,300.0	3,296.1	3,321.8	3,301.9	7.3	8.6	23.18	311.3	59.1	251.7	235.9	15.75	15.981		
3,400.0	3,396.1	3,421.2	3,401.3	7.5	8.7	23.21	309.5	58.4	249.8	233.7	16.12	15.496		
3,500.0	3,496.1	3,518.0	3,498.1	7.7	8.9	23.05	309.1	57.5	248.9	232.4	16.50	15.088		
3,600.0	3,596.1	3,617.5	3,597.6	8.0	9.1	22.70	309.2	55.9	248.5	231.6	16.89	14.708		
3,616.5	3,612.6	3,633.6	3,613.6	8.0	9.1	22.67	309.3	55.7	248.4	231.5	16.96	14.651		
3,700.0	3,696.1	3,716.0	3,696.0	8.2	9.2	22.60	309.7	55.6	248.8	231.5	17.29	14.388		
3,800.0	3,796.1	3,817.3	3,797.4	8.4	9.4	22.45	310.1	55.1	249.0	231.3	17.69	14.073		
3,900.0	3,896.1	3,917.4	3,897.5	8.6	9.6	22.19	310.3	53.9	248.7	230.6	18.09	13.747		
4,000.0	3,996.1	4,017.3	3,997.4	8.8	9.8	21.92	310.7	52.8	248.6	230.1	18.49	13.445		
4,100.0	4,096.1	4,119.0	4,099.1	9.1	10.0	21.71	310.6	51.8	248.2	229.3	18.89	13.138		
4,200.0	4,196.1	4,219.0	4,199.1	9.3	10.1	21.64	310.0	51.2	247.4	228.1	19.29	12.826		
4,300.0	4,296.1	4,317.4	4,297.4	9.5	10.3	21.64	309.6	51.1	247.0	227.3	19.68	12.547		
4,400.0	4,396.1	4,417.1	4,397.1	9.7	10.5	21.69	309.4	51.3	246.9	226.8	20.09	12.294		
4,485.7	4,481.8	4,502.8	4,482.8	9.9	10.6	21.76	309.3	51.5	246.9	226.5	20.43	12.084		
4,500.0	4,496.1	4,517.0	4,497.0	9.9	10.7	21.78	309.3	51.6	246.9	226.4	20.49	12.050		

CC - Min centre to center distance or convergent point, SF - min separation factor, ES - min ellipse separation

Company:	Synergy Resources	Local Co-ordinate Reference:	Well SRC Kelly Farms 12-4-3CHZ
Project:	SEC.4-T5N-R66W	TVD Reference:	WELL @ 4764.5ft (Ensign Rig #131 - RKB -13.5')
Reference Site:	SRC Kelly Farms Pad Sec.4-T5N-R66W	MD Reference:	WELL @ 4764.5ft (Ensign Rig #131 - RKB -13.5')
Site Error:	0.0ft	North Reference:	True
Reference Well:	SRC Kelly Farms 12-4-3CHZ	Survey Calculation Method:	Minimum Curvature
Well Error:	0.0ft	Output errors are at	2.00 sigma
Reference Wellbore	Wellbore #1	Database:	Landmark
Reference Design:	Plan #3 (6-19-14)R	Offset TVD Reference:	Offset Datum

Offset Design				SRC Kelly Farms Pad Sec.4-T5N-R66W - SRC Kelly Farms A-4-3CHZ - Wellbore #1 - Wellbore #1										Offset Site Error: 0.0 ft	
Survey Program: 79-MWD														Offset Well Error: 0.0 ft	
Reference		Offset		Semi Major Axis			Distance							Warning	
Measured Depth (ft)	Vertical Depth (ft)	Measured Depth (ft)	Vertical Depth (ft)	Reference (ft)	Offset (ft)	Highside Toolface (°)	Offset Wellbore Centre +N/-S (ft)	+E/-W (ft)	Between Centres (ft)	Between Ellipses (ft)	Minimum Separation (ft)	Separation Factor			
4,600.0	4,596.1	4,614.4	4,594.5	10.2	10.8	21.88	309.4	52.1	247.2	226.3	20.90	11.832			
4,700.0	4,696.1	4,710.6	4,690.6	10.4	11.0	22.11	310.7	53.8	249.2	227.8	21.31	11.693			
4,800.0	4,796.1	4,808.7	4,788.7	10.6	11.2	22.24	313.3	55.4	252.2	230.5	21.74	11.603			
4,900.0	4,896.1	4,915.0	4,894.9	10.8	11.5	22.33	315.6	56.8	254.7	232.5	22.18	11.484			
5,000.0	4,996.1	5,024.0	5,003.9	11.0	11.7	22.73	313.8	58.0	253.6	231.0	22.59	11.224			
5,100.0	5,096.1	5,122.6	5,102.4	11.3	11.8	22.94	311.3	57.9	251.2	228.2	22.98	10.931			
5,200.0	5,196.1	5,222.3	5,202.2	11.5	12.0	23.01	309.3	57.4	249.2	225.8	23.38	10.659			
5,300.0	5,296.1	5,322.4	5,302.2	11.7	12.2	23.03	307.3	56.6	247.0	223.3	23.78	10.390			
5,400.0	5,396.1	5,421.2	5,401.0	11.9	12.3	22.93	305.8	55.5	245.2	221.0	24.18	10.142			
5,500.0	5,496.1	5,520.9	5,500.7	12.2	12.5	22.78	304.7	54.4	243.7	219.2	24.58	9.915			
5,600.0	5,596.1	5,622.5	5,602.2	12.4	12.7	22.83	303.0	53.9	242.0	217.0	24.98	9.686			
5,700.0	5,696.1	5,723.1	5,702.8	12.6	12.9	23.23	300.2	54.5	239.7	214.3	25.38	9.444			
5,800.0	5,796.1	5,824.3	5,804.0	12.8	13.1	23.58	297.2	54.8	237.1	211.3	25.78	9.195			
5,900.0	5,896.1	5,923.8	5,903.4	13.0	13.2	23.75	294.2	54.3	234.2	208.0	26.18	8.944			
6,000.0	5,996.1	6,022.1	6,001.7	13.3	13.4	23.61	292.5	52.9	232.0	205.4	26.59	8.727			
6,100.0	6,096.1	6,121.2	6,100.8	13.5	13.6	23.39	291.0	51.3	230.0	203.0	26.99	8.519			
6,200.0	6,196.1	6,220.7	6,200.3	13.7	13.8	23.21	290.3	50.2	228.9	201.5	27.41	8.352			
6,300.0	6,296.1	6,320.0	6,299.5	13.9	14.0	23.05	289.1	49.0	227.3	199.5	27.82	8.170			
6,391.4	6,387.5	6,408.9	6,388.5	14.1	14.1	23.22	288.5	49.4	226.8	198.7	28.19	8.047			
6,400.0	6,396.1	6,417.4	6,396.9	14.2	14.2	23.25	288.4	49.5	226.9	198.6	28.23	8.037			
6,446.3	6,442.4	6,461.2	6,440.8	14.3	14.2	23.44	288.3	50.3	227.1	198.6	28.42	7.990			
6,450.0	6,446.1	6,464.7	6,444.2	14.3	14.2	-66.95	288.3	50.4	227.1	199.3	27.82	8.163			
6,500.0	6,496.1	6,510.4	6,489.9	14.4	14.3	-66.86	288.5	52.4	227.5	199.5	28.02	8.119			
6,550.0	6,545.8	6,555.3	6,534.7	14.5	14.4	-67.15	289.1	55.9	227.6	199.4	28.20	8.073			
6,600.0	6,595.1	6,599.6	6,578.6	14.6	14.5	-67.55	289.8	61.6	227.8	199.4	28.36	8.031			
6,650.0	6,643.9	6,651.1	6,629.2	14.6	14.6	-68.19	290.4	70.9	227.5	199.0	28.53	7.975			
6,700.0	6,691.8	6,708.0	6,684.8	14.7	14.8	-69.30	288.7	82.8	224.8	196.1	28.71	7.830			
6,750.0	6,738.7	6,755.1	6,730.4	14.8	14.9	-70.58	286.2	94.3	220.5	191.7	28.89	7.634			
6,800.0	6,784.4	6,797.0	6,770.5	15.0	15.0	-71.94	283.8	106.4	216.0	186.9	29.08	7.427			
6,850.0	6,828.7	6,845.4	6,815.8	15.1	15.1	-73.55	281.0	123.1	211.5	182.2	29.34	7.208			
6,900.0	6,871.5	6,889.0	6,855.4	15.3	15.2	-74.95	278.7	141.3	207.6	178.0	29.62	7.010			
6,950.0	6,912.6	6,931.0	6,891.9	15.5	15.3	-76.10	277.0	161.9	204.7	174.7	29.97	6.829			
7,000.0	6,951.8	6,975.0	6,928.0	15.7	15.5	-76.93	276.0	187.0	203.0	172.6	30.37	6.685			
7,032.0	6,975.8	6,998.9	6,946.7	15.9	15.6	-77.28	275.9	201.9	202.6	172.0	30.67	6.607			
7,050.0	6,988.9	7,013.4	6,957.7	16.0	15.7	-77.49	276.1	211.3	202.8	171.9	30.85	6.573			
7,100.0	7,023.9	7,053.7	6,987.4	16.3	15.9	-78.08	277.6	238.5	204.2	172.8	31.40	6.504 SF			
7,150.0	7,056.5	7,064.0	6,994.7	16.7	16.0	-77.86	278.2	245.8	210.1	178.3	31.82	6.603			
7,200.0	7,086.6	7,064.0	6,994.7	17.2	16.0	-76.65	278.2	245.8	226.2	194.0	32.17	7.030			
7,250.0	7,114.2	7,064.0	6,994.7	17.7	16.0	-74.66	278.2	245.8	250.7	218.2	32.51	7.713			
7,300.0	7,139.1	7,064.0	6,994.7	18.3	16.0	-71.93	278.2	245.8	281.5	248.7	32.79	8.586			
7,350.0	7,161.1	7,064.0	6,994.7	19.0	16.0	-68.57	278.2	245.8	316.5	283.6	32.96	9.603			
7,400.0	7,180.3	7,064.0	6,994.7	19.8	16.0	-64.69	278.2	245.8	354.5	321.5	32.98	10.748			
7,450.0	7,196.5	7,064.0	6,994.7	20.6	16.0	-60.43	278.2	245.8	394.3	361.5	32.81	12.020			
7,500.0	7,209.7	7,064.0	6,994.7	21.5	16.0	-55.97	278.2	245.8	435.4	403.0	32.43	13.429			
7,550.0	7,219.9	7,064.0	6,994.7	22.4	16.0	-51.46	278.2	245.8	477.4	445.5	31.85	14.987			
7,600.0	7,226.9	7,064.0	6,994.7	23.4	16.0	-47.07	278.2	245.8	519.8	488.6	31.14	16.693			
7,650.0	7,230.7	7,064.0	6,994.7	24.4	16.0	-42.91	278.2	245.8	562.3	532.0	30.33	18.538			
7,658.3	7,231.0	7,064.0	6,994.7	24.6	16.0	-42.24	278.2	245.8	569.4	539.2	30.20	18.856			
7,685.9	7,232.0	7,064.0	6,994.7	25.2	16.0	-42.24	278.2	245.8	593.1	562.5	30.59	19.389			
7,700.0	7,232.5	7,064.0	6,994.7	25.5	16.0	-41.97	278.2	245.8	605.3	574.6	30.69	19.725			

CC - Min centre to center distance or convergent point, SF - min separation factor, ES - min ellipse separation

Company:	Synergy Resources	Local Co-ordinate Reference:	Well SRC Kelly Farms 12-4-3CHZ
Project:	SEC.4-T5N-R66W	TVD Reference:	WELL @ 4764.5ft (Ensign Rig #131 - RKB -13.5')
Reference Site:	SRC Kelly Farms Pad Sec.4-T5N-R66W	MD Reference:	WELL @ 4764.5ft (Ensign Rig #131 - RKB -13.5')
Site Error:	0.0ft	North Reference:	True
Reference Well:	SRC Kelly Farms 12-4-3CHZ	Survey Calculation Method:	Minimum Curvature
Well Error:	0.0ft	Output errors are at	2.00 sigma
Reference Wellbore	Wellbore #1	Database:	Landmark
Reference Design:	Plan #3 (6-19-14)R	Offset TVD Reference:	Offset Datum

Offset Design												Offset Site Error:	0.0 ft
SRC Kelly Farms Pad Sec.4-T5N-R66W - SRC Kelly Farms A-4-3CHZ - Wellbore #1 - Wellbore #1												Offset Well Error:	0.0 ft
Survey Program: 79-MWD													
Reference		Offset		Semi Major Axis			Distance						
Measured Depth (ft)	Vertical Depth (ft)	Measured Depth (ft)	Vertical Depth (ft)	Reference (ft)	Offset (ft)	Highside Toolface (°)	Offset Wellbore Centre +N/-S (ft)	+E/-W (ft)	Between Centres (ft)	Between Ellipses (ft)	Minimum Separation (ft)	Separation Factor	Warning
7,788.5	7,233.8	7,064.0	6,994.7	27.4	16.0	-40.26	278.2	245.8	683.1	651.8	31.27	21.843	
7,800.0	7,233.8	7,064.0	6,994.7	27.6	16.0	-40.26	278.2	245.8	693.3	661.9	31.44	22.051	
7,900.0	7,233.7	7,064.0	6,994.7	29.9	16.0	-40.26	278.2	245.8	783.7	750.8	32.94	23.790	
8,000.0	7,233.7	7,064.0	6,994.7	32.3	16.0	-40.26	278.2	245.8	876.2	841.7	34.51	25.393	
8,100.0	7,233.6	7,064.0	6,994.7	34.8	16.0	-40.26	278.2	245.8	970.2	934.1	36.12	26.862	

Company:	Synergy Resources	Local Co-ordinate Reference:	Well SRC Kelly Farms 12-4-3CHZ
Project:	SEC.4-T5N-R66W	TVD Reference:	WELL @ 4764.5ft (Ensign Rig #131 - RKB -13.5')
Reference Site:	SRC Kelly Farms Pad Sec.4-T5N-R66W	MD Reference:	WELL @ 4764.5ft (Ensign Rig #131 - RKB -13.5')
Site Error:	0.0ft	North Reference:	True
Reference Well:	SRC Kelly Farms 12-4-3CHZ	Survey Calculation Method:	Minimum Curvature
Well Error:	0.0ft	Output errors are at	2.00 sigma
Reference Wellbore	Wellbore #1	Database:	Landmark
Reference Design:	Plan #3 (6-19-14)R	Offset TVD Reference:	Offset Datum

Offset Design													Offset Site Error:	0.0ft
Survey Program: 174-MWD													Offset Well Error:	0.0ft
Reference		Offset		Semi Major Axis			Distance							Warning
Measured Depth (ft)	Vertical Depth (ft)	Measured Depth (ft)	Vertical Depth (ft)	Reference (ft)	Offset (ft)	Highside Toolface (°)	Offset Wellbore Centre +N/-S (ft)	+E/-W (ft)	Between Centres (ft)	Between Ellipses (ft)	Minimum Separation (ft)	Separation Factor		
0.0	0.0	2.0	2.0	0.0	0.0	-71.99	14.2	-43.7	46.0	46.0	0.00	N/A CC, ES		
100.0	100.0	101.7	101.7	0.1	0.1	-72.37	14.0	-44.1	46.3	46.1	0.23	203.033		
200.0	200.0	201.5	201.5	0.3	0.3	-73.34	13.6	-45.3	47.3	46.7	0.59	79.966		
300.0	300.0	301.7	301.7	0.6	0.5	-72.69	14.3	-46.0	48.2	47.2	1.02	47.192		
400.0	400.0	401.8	401.8	0.8	0.7	-69.10	17.4	-45.4	48.7	47.2	1.46	33.381		
500.0	500.0	501.5	501.3	1.0	0.9	-62.15	23.2	-43.9	49.6	47.7	1.91	26.001		
600.0	600.0	601.0	600.5	1.2	1.1	-53.79	30.6	-41.7	51.7	49.4	2.36	21.882		
700.0	700.0	700.5	699.5	1.5	1.4	-45.70	38.7	-39.7	55.5	52.7	2.82	19.669		
800.0	800.0	799.6	798.3	1.7	1.7	-37.86	47.8	-37.2	60.7	57.4	3.27	18.534		
900.0	900.0	898.1	896.1	1.9	1.9	-30.76	58.2	-34.6	68.0	64.2	3.73	18.238		
1,000.0	1,000.0	997.1	994.4	2.1	2.2	-24.71	70.0	-32.2	77.4	73.3	4.17	18.592		
1,100.0	1,100.0	1,095.9	1,092.5	2.4	2.5	6.53	81.9	-30.1	86.1	81.4	4.66	18.462		
1,200.0	1,199.8	1,194.8	1,190.5	2.6	2.8	10.45	94.5	-28.5	92.6	87.5	5.10	18.141		
1,276.7	1,276.3	1,271.5	1,266.6	2.8	3.0	13.43	104.4	-27.4	95.6	90.2	5.43	17.604		
1,300.0	1,299.5	1,294.7	1,289.6	2.8	3.1	14.40	107.4	-26.9	96.3	90.8	5.53	17.404		
1,400.0	1,399.0	1,395.0	1,389.1	3.1	3.4	18.30	120.2	-25.2	99.3	93.3	5.97	16.626		
1,500.0	1,498.5	1,493.7	1,487.0	3.3	3.7	21.16	132.9	-24.9	103.0	96.6	6.41	16.068		
1,600.0	1,598.1	1,596.1	1,588.6	3.6	3.9	22.53	145.0	-27.1	106.0	99.1	6.86	15.453		
1,700.0	1,697.6	1,696.9	1,688.9	3.8	4.2	23.06	155.1	-30.5	107.3	100.0	7.30	14.700		
1,800.0	1,797.1	1,797.0	1,788.4	4.1	4.5	23.64	165.1	-33.8	108.7	100.9	7.75	14.017		
1,900.0	1,896.7	1,896.6	1,887.5	4.3	4.7	25.60	174.5	-34.4	109.4	101.2	8.21	13.332		
1,927.2	1,923.7	1,922.9	1,913.7	4.4	4.8	26.26	177.3	-34.3	109.9	101.6	8.33	13.195		
2,000.0	1,996.3	1,995.8	1,986.1	4.6	5.0	27.88	185.5	-33.9	112.6	104.0	8.65	13.022		
2,100.0	2,096.1	2,095.3	2,085.1	4.8	5.3	28.75	196.0	-34.5	118.5	109.5	9.05	13.100		
2,203.9	2,200.0	2,197.8	2,186.9	5.0	5.6	1.48	207.9	-36.7	128.8	118.3	10.49	12.273		
2,300.0	2,296.1	2,295.2	2,283.6	5.1	5.9	1.32	218.9	-36.8	139.6	128.7	10.95	12.749		
2,400.0	2,396.1	2,393.0	2,380.8	5.4	6.1	0.82	229.3	-37.9	150.3	138.9	11.44	13.134		
2,500.0	2,496.1	2,493.8	2,481.0	5.6	6.4	0.28	240.6	-39.2	161.5	149.6	11.95	13.523		
2,600.0	2,596.1	2,591.4	2,578.0	5.8	6.7	0.09	251.5	-39.7	172.6	160.2	12.44	13.882		
2,700.0	2,696.1	2,690.1	2,676.0	6.0	7.0	0.08	263.1	-39.8	184.5	171.5	12.94	14.253		
2,800.0	2,796.1	2,789.6	2,774.7	6.2	7.3	-0.11	275.1	-40.4	196.5	183.0	13.46	14.601		
2,900.0	2,896.1	2,890.4	2,874.9	6.4	7.6	-0.46	286.7	-41.6	208.0	194.1	13.96	14.898		
3,000.0	2,996.1	2,990.0	2,973.9	6.6	7.9	-0.87	297.5	-43.3	218.9	204.4	14.46	15.132		
3,100.0	3,096.1	3,088.3	3,071.5	6.9	8.1	-1.05	309.0	-44.2	230.6	215.6	14.96	15.410		
3,200.0	3,196.1	3,187.9	3,170.5	7.1	8.4	-1.14	320.1	-44.8	241.7	226.2	15.47	15.628		
3,300.0	3,296.1	3,288.6	3,270.6	7.3	8.7	-0.85	331.7	-43.8	253.2	237.2	15.97	15.855		
3,400.0	3,396.1	3,391.6	3,372.9	7.5	9.0	-0.69	342.2	-43.1	263.4	246.9	16.47	15.992		
3,500.0	3,496.1	3,489.5	3,470.4	7.7	9.3	-0.51	351.7	-42.4	273.1	256.2	16.95	16.111		
3,600.0	3,596.1	3,585.8	3,566.2	8.0	9.5	-0.28	362.0	-41.4	283.8	266.4	17.44	16.271		
3,700.0	3,696.1	3,689.4	3,669.2	8.2	9.8	-0.21	372.6	-41.1	294.0	276.1	17.95	16.380		
3,800.0	3,796.1	3,782.9	3,762.1	8.4	10.1	0.14	382.9	-39.3	305.0	286.6	18.43	16.545		
3,900.0	3,896.1	3,880.3	3,858.8	8.6	10.4	0.63	394.6	-36.5	317.1	298.2	18.95	16.738		
4,000.0	3,996.1	3,978.6	3,956.3	8.8	10.7	1.00	407.0	-34.3	329.7	310.3	19.47	16.939		
4,100.0	4,096.1	4,084.6	4,061.4	9.1	11.0	1.26	419.8	-32.5	341.9	321.9	20.00	17.096		
4,200.0	4,196.1	4,186.7	4,163.0	9.3	11.3	1.39	429.9	-31.5	351.8	331.3	20.50	17.159		
4,300.0	4,296.1	4,285.3	4,261.1	9.5	11.5	1.47	439.9	-30.8	361.9	340.9	20.99	17.239		
4,400.0	4,396.1	4,381.0	4,356.3	9.7	11.8	1.68	450.1	-29.1	372.6	351.1	21.48	17.344		
4,500.0	4,496.1	4,490.0	4,464.7	9.9	12.1	1.94	460.9	-27.1	382.6	360.6	22.00	17.394		
4,600.0	4,596.1	4,593.6	4,568.0	10.2	12.4	2.02	469.1	-26.3	390.5	368.0	22.48	17.372		
4,700.0	4,696.1	4,692.8	4,666.9	10.4	12.6	1.95	477.1	-26.5	398.6	375.6	22.95	17.371		
4,800.0	4,796.1	4,790.5	4,764.3	10.6	12.9	1.91	484.5	-26.5	406.1	382.7	23.41	17.347		

CC - Min centre to center distance or convergent point, SF - min separation factor, ES - min ellipse separation

SRC Kelly Farms Pad Sec.4-T5N-R66W - SRC Kelly Farms A-4-3NHZ - Wellbore #1 - Wellbore #1													Offset Site Error:	0.0 ft
Survey Program: 174-MWD													Offset Well Error:	0.0 ft
Reference		Offset		Semi Major Axis			Distance							
Measured Depth	Vertical Depth	Measured Depth	Vertical Depth	Reference	Offset	Highside Toolface	Offset Wellbore Centre		Between Centres	Between Ellipses	Minimum Separation	Separation Factor	Warning	
Depth (ft)	Depth (ft)	Depth (ft)	Depth (ft)	(ft)	(ft)	(°)	+N/-S (ft)	+E/-W (ft)	(ft)	(ft)	(ft)			
4,900.0	4,896.1	4,885.5	4,858.9	10.8	13.1	2.03	493.2	-25.4	415.3	391.5	23.88	17.392		
5,000.0	4,996.1	4,987.4	4,960.4	11.0	13.4	2.12	502.6	-24.4	424.6	400.2	24.37	17.420		
5,100.0	5,096.1	5,107.9	5,080.5	11.3	13.7	2.13	510.8	-24.0	431.5	406.6	24.88	17.343		
5,200.0	5,196.1	5,220.8	5,193.4	11.5	13.9	1.74	513.5	-26.9	433.7	408.4	25.31	17.134		
5,300.0	5,296.1	5,324.0	5,296.6	11.7	14.0	1.29	514.3	-30.2	434.4	408.7	25.71	16.897		
5,400.0	5,396.1	5,424.6	5,397.1	11.9	14.2	0.91	514.5	-33.1	434.6	408.5	26.10	16.651		
5,500.0	5,496.1	5,527.4	5,499.9	12.2	14.4	0.55	514.6	-35.8	434.6	408.2	26.49	16.408		
5,600.0	5,596.1	5,627.5	5,599.9	12.4	14.5	0.32	514.1	-37.6	434.1	407.3	26.87	16.155		
5,700.0	5,696.1	5,727.6	5,700.0	12.6	14.7	0.12	513.7	-39.1	433.7	406.5	27.26	15.911		
5,800.0	5,796.1	5,827.8	5,800.2	12.8	14.9	-0.12	513.3	-40.9	433.3	405.7	27.65	15.674		
5,900.0	5,896.1	5,931.4	5,903.8	13.0	15.0	-0.44	512.4	-43.3	432.4	404.4	28.03	15.424		
6,000.0	5,996.1	6,029.1	6,001.4	13.3	15.2	-0.69	510.9	-45.2	431.0	402.5	28.41	15.168		
6,031.0	6,027.1	6,056.8	6,029.2	13.3	15.2	-0.71	510.8	-45.4	430.8	402.3	28.53	15.102		
6,100.0	6,096.1	6,125.8	6,098.2	13.5	15.3	-0.64	511.0	-44.8	431.1	402.3	28.80	14.969		
6,200.0	6,196.1	6,227.4	6,199.7	13.7	15.5	-0.28	510.6	-42.1	430.6	401.4	29.19	14.750		
6,300.0	6,296.1	6,330.7	6,302.6	13.9	15.7	0.68	510.0	-34.9	430.1	400.5	29.59	14.535		
6,346.5	6,342.6	6,373.5	6,344.6	14.0	15.8	1.80	509.5	-26.5	429.7	399.9	29.77	14.437		
6,400.0	6,396.1	6,418.2	6,387.9	14.2	15.8	3.24	509.5	-15.7	430.3	400.4	29.97	14.361		
6,446.3	6,442.4	6,455.5	6,423.7	14.3	15.9	4.63	510.1	-5.2	432.0	401.8	30.14	14.331		
6,450.0	6,446.1	6,458.4	6,426.5	14.3	15.9	-85.65	510.1	-4.3	432.1	404.2	27.99	15.442		
6,500.0	6,496.1	6,498.2	6,464.4	14.4	16.0	-84.04	511.4	7.8	435.2	407.0	28.18	15.443		
6,550.0	6,545.8	6,538.1	6,502.1	14.5	16.1	-82.60	513.4	20.7	439.1	410.8	28.37	15.477		
6,600.0	6,595.1	6,578.3	6,539.7	14.6	16.2	-81.31	516.0	34.7	443.9	415.3	28.58	15.535		
6,650.0	6,643.9	6,619.1	6,577.2	14.6	16.3	-80.14	519.2	50.3	449.3	420.6	28.77	15.617		
6,700.0	6,691.8	6,667.5	6,620.3	14.7	16.5	-78.76	522.8	72.0	454.8	425.8	29.01	15.680		
6,750.0	6,738.7	6,713.4	6,658.8	14.8	16.6	-77.23	525.2	96.9	460.0	430.7	29.23	15.736		
6,800.0	6,784.4	6,754.3	6,691.3	15.0	16.8	-75.75	527.1	121.7	465.3	435.8	29.47	15.788		
6,850.0	6,828.7	6,794.0	6,721.1	15.1	17.0	-74.31	528.9	147.8	470.9	441.2	29.70	15.857		
6,900.0	6,871.5	6,842.0	6,755.9	15.3	17.2	-72.81	531.0	180.7	476.3	446.3	30.02	15.868		
6,950.0	6,912.6	6,889.0	6,789.4	15.5	17.4	-71.64	533.0	213.7	481.2	450.8	30.36	15.850		
7,000.0	6,951.8	6,933.3	6,820.0	15.7	17.7	-70.73	534.8	245.7	485.6	454.8	30.78	15.775		
7,050.0	6,988.9	6,972.0	6,845.7	16.0	18.0	-70.04	536.2	274.6	489.5	458.3	31.21	15.686		
7,100.0	7,023.9	7,016.6	6,874.1	16.3	18.3	-69.44	538.0	309.0	493.2	461.4	31.81	15.504		
7,150.0	7,056.5	7,061.0	6,900.6	16.7	18.7	-68.98	540.1	344.5	496.8	464.4	32.48	15.298		
7,200.0	7,086.6	7,115.3	6,931.1	17.2	19.3	-68.62	541.8	389.3	499.5	466.1	33.42	14.946		
7,250.0	7,114.2	7,169.0	6,959.4	17.7	19.9	-68.40	541.5	435.0	500.1	465.6	34.50	14.495		
7,300.0	7,139.1	7,212.1	6,980.2	18.3	20.5	-68.30	540.7	472.8	499.8	464.2	35.62	14.033		
7,350.0	7,161.1	7,254.1	6,998.5	19.0	21.1	-68.29	539.7	510.6	499.1	462.3	36.86	13.542		
7,400.0	7,180.3	7,294.5	7,014.3	19.8	21.7	-68.36	538.8	547.7	498.2	459.9	38.23	13.030		
7,450.0	7,196.5	7,336.5	7,028.8	20.6	22.4	-68.52	537.8	587.1	497.0	457.3	39.75	12.502		
7,500.0	7,209.7	7,386.7	7,043.6	21.5	23.3	-68.77	536.0	635.0	495.0	453.4	41.58	11.904		
7,550.0	7,219.9	7,435.7	7,055.5	22.4	24.2	-69.09	533.1	682.5	491.9	448.3	43.51	11.304		
7,600.0	7,226.9	7,482.8	7,065.4	23.4	25.1	-69.62	530.0	728.4	487.8	442.2	45.56	10.707		
7,650.0	7,230.7	7,525.2	7,073.3	24.4	26.0	-70.35	527.1	770.0	483.1	435.4	47.63	10.141		
7,658.3	7,231.0	7,531.5	7,074.3	24.6	26.1	-70.48	526.7	776.2	482.3	434.3	47.97	10.053		
7,685.9	7,232.0	7,552.5	7,077.6	25.2	26.6	-70.73	525.5	796.9	479.8	430.8	49.02	9.789		
7,700.0	7,232.5	7,563.3	7,079.1	25.5	26.8	-70.86	524.9	807.5	478.7	429.2	49.57	9.658		
7,788.5	7,233.8	7,626.8	7,085.7	27.4	28.2	-71.50	522.5	870.6	473.4	420.5	52.97	8.937		
7,800.0	7,233.8	7,633.0	7,085.9	27.6	28.3	-71.53	522.4	876.8	473.0	419.7	53.36	8.865		
7,900.0	7,233.7	7,723.0	7,086.2	29.9	30.4	-71.51	521.0	966.8	471.6	414.1	57.52	8.199		

Company:	Synergy Resources	Local Co-ordinate Reference:	Well SRC Kelly Farms 12-4-3CHZ
Project:	SEC.4-T5N-R66W	TVD Reference:	WELL @ 4764.5ft (Ensign Rig #131 - RKB -13.5')
Reference Site:	SRC Kelly Farms Pad Sec.4-T5N-R66W	MD Reference:	WELL @ 4764.5ft (Ensign Rig #131 - RKB -13.5')
Site Error:	0.0ft	North Reference:	True
Reference Well:	SRC Kelly Farms 12-4-3CHZ	Survey Calculation Method:	Minimum Curvature
Well Error:	0.0ft	Output errors are at	2.00 sigma
Reference Wellbore	Wellbore #1	Database:	Landmark
Reference Design:	Plan #3 (6-19-14)R	Offset TVD Reference:	Offset Datum

Offset Design		SRC Kelly Farms Pad Sec.4-T5N-R66W - SRC Kelly Farms A-4-3NHZ - Wellbore #1 - Wellbore #1										Offset Site Error:		0.0 ft		
Survey Program: 174-MWD														Offset Well Error:		0.0 ft
Reference		Offset		Semi Major Axis			Distance							Warning		
Measured Depth (ft)	Vertical Depth (ft)	Measured Depth (ft)	Vertical Depth (ft)	Reference (ft)	Offset (ft)	Highside Toolface (°)	Offset Wellbore Centre		Between Centres (ft)	Between Ellipses (ft)	Minimum Separation (ft)	Separation Factor				
							+N/-S (ft)	+E/-W (ft)								
7,905.7	7,233.7	7,723.0	7,086.2	30.1	30.4	-71.51	521.0	966.8	471.6	414.0	57.65	8.180				
8,000.0	7,233.7	7,808.0	7,084.0	32.3	32.3	-71.29	521.6	1,051.8	473.0	411.4	61.64	7.674				
8,100.0	7,233.6	7,920.3	7,082.2	34.8	35.1	-71.11	522.0	1,164.0	474.0	407.5	66.52	7.126				
8,104.0	7,233.6	7,924.0	7,082.1	34.9	35.2	-71.10	522.0	1,167.7	474.0	407.3	66.69	7.107				
8,200.0	7,233.6	8,015.1	7,081.2	37.3	37.4	-71.02	522.2	1,258.9	474.7	403.5	71.11	6.675				
8,300.0	7,233.6	8,122.0	7,080.0	39.8	40.1	-70.90	522.4	1,365.7	475.2	399.2	76.05	6.249				
8,400.0	7,233.5	8,224.9	7,078.3	42.4	42.7	-70.63	520.3	1,468.6	474.0	393.1	80.90	5.860				
8,464.4	7,233.5	8,284.4	7,077.1	44.0	44.3	-70.46	519.4	1,528.1	473.6	389.8	83.87	5.647				
8,500.0	7,233.5	8,316.4	7,076.6	45.0	45.1	-70.40	519.3	1,560.0	473.8	388.3	85.50	5.541				
8,600.0	7,233.4	8,405.7	7,075.5	47.6	47.4	-70.35	520.7	1,649.4	475.7	385.5	90.17	5.275				
8,700.0	7,233.4	8,499.8	7,074.3	50.2	49.9	-70.35	523.9	1,743.4	479.5	384.5	95.00	5.047				
8,800.0	7,233.3	8,596.8	7,072.9	52.9	52.5	-70.37	528.1	1,840.3	484.0	384.1	99.95	4.843				
8,900.0	7,233.3	8,707.8	7,069.0	55.5	55.4	-70.07	531.2	1,951.2	488.0	382.9	105.11	4.643				
9,000.0	7,233.3	8,828.0	7,067.5	58.2	58.6	-69.92	531.4	2,071.3	488.7	378.1	110.61	4.419				
9,100.0	7,233.2	8,939.7	7,067.0	60.9	61.6	-69.70	527.1	2,183.0	485.3	369.4	115.86	4.189				
9,200.0	7,233.2	9,044.3	7,066.3	63.6	64.5	-69.43	521.9	2,287.4	481.0	360.1	120.90	3.978				
9,300.0	7,233.1	9,146.6	7,066.3	66.4	67.2	-69.19	516.1	2,389.6	475.8	349.9	125.91	3.779				
9,400.0	7,233.1	9,249.2	7,064.0	69.1	70.0	-68.61	508.7	2,491.8	469.9	339.3	130.65	3.597				
9,500.0	7,233.1	9,341.8	7,059.0	71.8	72.5	-67.73	501.5	2,584.1	464.8	329.9	134.83	3.447				
9,600.0	7,233.0	9,438.1	7,055.5	74.5	75.1	-67.06	495.8	2,680.1	460.9	321.7	139.23	3.310				
9,700.0	7,233.0	9,534.6	7,054.8	77.3	77.8	-66.80	491.8	2,776.5	457.4	313.5	143.98	3.177				
9,800.0	7,232.9	9,623.9	7,055.3	80.0	80.2	-66.80	490.4	2,865.8	455.8	307.1	148.78	3.064				
9,821.9	7,232.9	9,643.7	7,055.5	80.6	80.8	-66.81	490.4	2,885.5	455.8	305.9	149.86	3.042				
9,900.0	7,232.9	9,714.8	7,056.0	82.8	82.7	-66.92	491.2	2,956.7	456.4	302.7	153.76	2.968				
10,000.0	7,232.8	9,813.7	7,057.2	85.5	85.4	-67.20	493.9	3,055.6	458.6	299.5	159.11	2.882				
10,100.0	7,232.8	9,916.5	7,058.7	88.3	88.3	-67.46	495.6	3,158.3	459.6	295.0	164.58	2.793				
10,200.0	7,232.8	10,015.8	7,058.4	91.1	91.0	-67.50	496.8	3,257.6	461.0	291.3	169.73	2.716				
10,300.0	7,232.7	10,112.3	7,057.8	93.8	93.7	-67.51	498.1	3,354.1	462.6	287.8	174.79	2.646				
10,400.0	7,232.7	10,219.4	7,057.6	96.6	96.6	-67.57	499.7	3,461.2	464.1	283.9	180.18	2.576				
10,500.0	7,232.6	10,319.7	7,056.4	99.4	99.4	-67.45	499.8	3,561.5	464.7	279.5	185.19	2.509				
10,600.0	7,232.6	10,426.9	7,053.5	102.1	102.4	-67.04	497.8	3,668.6	464.2	274.1	190.02	2.443				
10,700.0	7,232.6	10,525.3	7,051.0	104.9	105.1	-66.67	495.7	3,767.0	463.3	268.7	194.63	2.380				
10,791.1	7,232.5	10,613.2	7,048.8	107.4	107.5	-66.35	494.2	3,854.8	462.8	264.0	198.80	2.328				
10,800.0	7,232.5	10,621.5	7,048.7	107.7	107.8	-66.32	494.1	3,863.1	462.9	263.7	199.20	2.324				
10,900.0	7,232.5	10,722.5	7,046.9	110.4	110.6	-66.12	493.7	3,964.1	463.3	259.2	204.05	2.270				
11,000.0	7,232.4	10,826.3	7,046.2	113.2	113.4	-65.99	492.5	4,067.9	462.6	253.6	209.08	2.213				
11,100.0	7,232.4	10,923.4	7,045.3	116.0	116.1	-65.84	491.3	4,164.9	462.0	248.1	213.90	2.160				
11,200.0	7,232.3	11,026.2	7,045.4	118.8	119.0	-65.84	490.8	4,267.7	461.5	242.4	219.08	2.107				
11,300.0	7,232.3	11,136.1	7,046.0	121.6	122.0	-65.76	487.7	4,377.6	458.8	234.5	224.32	2.045				
11,400.0	7,232.3	11,223.9	7,045.5	124.4	124.5	-65.62	485.9	4,465.4	457.3	228.4	228.90	1.998				
11,433.2	7,232.3	11,255.4	7,045.3	125.3	125.4	-65.59	485.8	4,496.9	457.2	226.7	230.50	1.984				
11,500.0	7,232.2	11,320.0	7,045.0	127.1	127.2	-65.57	485.8	4,561.5	457.4	223.6	233.82	1.956				
11,600.0	7,232.2	11,411.7	7,044.3	129.9	129.7	-65.52	486.2	4,653.2	458.3	219.7	238.63	1.921				
11,700.0	7,232.1	11,496.9	7,043.3	132.7	132.1	-65.59	489.7	4,738.3	462.5	219.0	243.47	1.900				
11,800.0	7,232.1	11,589.9	7,041.7	135.5	134.6	-65.70	495.2	4,831.2	468.7	220.1	248.59	1.886				
11,900.0	7,232.1	11,690.2	7,039.2	138.3	137.4	-65.78	502.0	4,931.1	476.1	222.3	253.82	1.876				
12,000.0	7,232.0	11,793.7	7,036.3	141.1	140.3	-65.74	507.4	5,034.5	482.1	223.1	258.95	1.862				
12,034.4	7,232.0	11,824.0	7,035.4	142.0	141.1	-65.73	509.2	5,064.7	484.3	223.7	260.58	1.859 SF				
12,034.8	7,232.0	11,824.0	7,035.4	142.0	141.1	-65.73	509.2	5,064.7	484.4	223.8	260.59	1.859				

Company:	Synergy Resources	Local Co-ordinate Reference:	Well SRC Kelly Farms 12-4-3CHZ
Project:	SEC.4-T5N-R66W	TVD Reference:	WELL @ 4764.5ft (Ensign Rig #131 - RKB -13.5')
Reference Site:	SRC Kelly Farms Pad Sec.4-T5N-R66W	MD Reference:	WELL @ 4764.5ft (Ensign Rig #131 - RKB -13.5')
Site Error:	0.0ft	North Reference:	True
Reference Well:	SRC Kelly Farms 12-4-3CHZ	Survey Calculation Method:	Minimum Curvature
Well Error:	0.0ft	Output errors are at	2.00 sigma
Reference Wellbore	Wellbore #1	Database:	Landmark
Reference Design:	Plan #3 (6-19-14)R	Offset TVD Reference:	Offset Datum

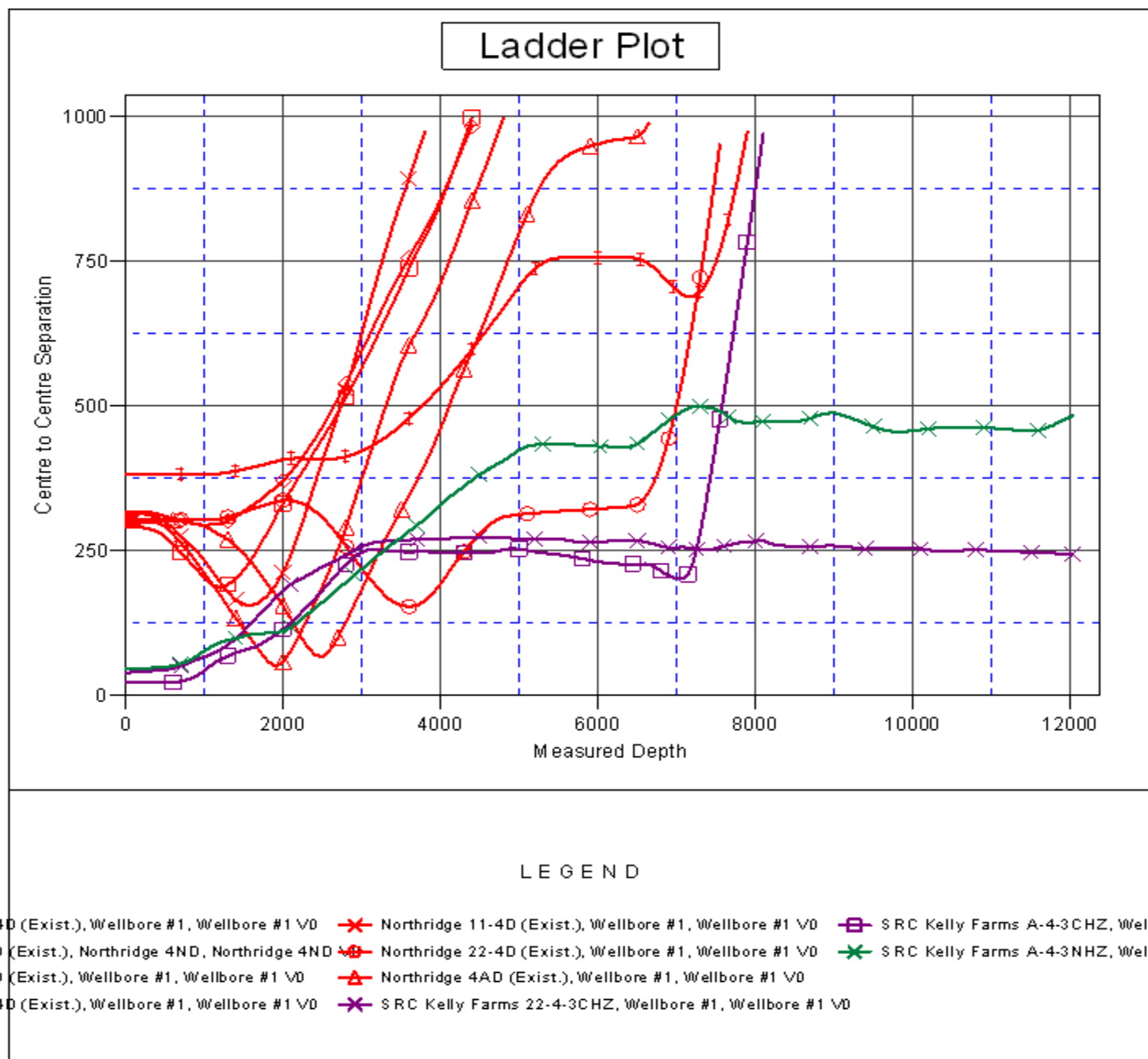
Reference Depths are relative to WELL @ 4764.5ft (Ensign Rig #131 - Coordinates are relative to: SRC Kelly Farms 12-4-3CHZ

Offset Depths are relative to Offset Datum

Coordinate System is US State Plane 1983, Colorado Northern Zone

Central Meridian is -105.500000 °

Grid Convergence at Surface is: 0.46°



Company:	Synergy Resources	Local Co-ordinate Reference:	Well SRC Kelly Farms 12-4-3CHZ
Project:	SEC.4-T5N-R66W	TVD Reference:	WELL @ 4764.5ft (Ensign Rig #131 - RKB -13.5')
Reference Site:	SRC Kelly Farms Pad Sec.4-T5N-R66W	MD Reference:	WELL @ 4764.5ft (Ensign Rig #131 - RKB -13.5')
Site Error:	0.0ft	North Reference:	True
Reference Well:	SRC Kelly Farms 12-4-3CHZ	Survey Calculation Method:	Minimum Curvature
Well Error:	0.0ft	Output errors are at	2.00 sigma
Reference Wellbore	Wellbore #1	Database:	Landmark
Reference Design:	Plan #3 (6-19-14)R	Offset TVD Reference:	Offset Datum

Reference Depths are relative to WELL @ 4764.5ft (Ensign Rig #131 - Coordinates are relative to: SRC Kelly Farms 12-4-3CHZ
 Offset Depths are relative to Offset Datum
 Central Meridian is -105.500000 °
 Coordinate System is US State Plane 1983, Colorado Northern Zone
 Grid Convergence at Surface is: 0.46°

