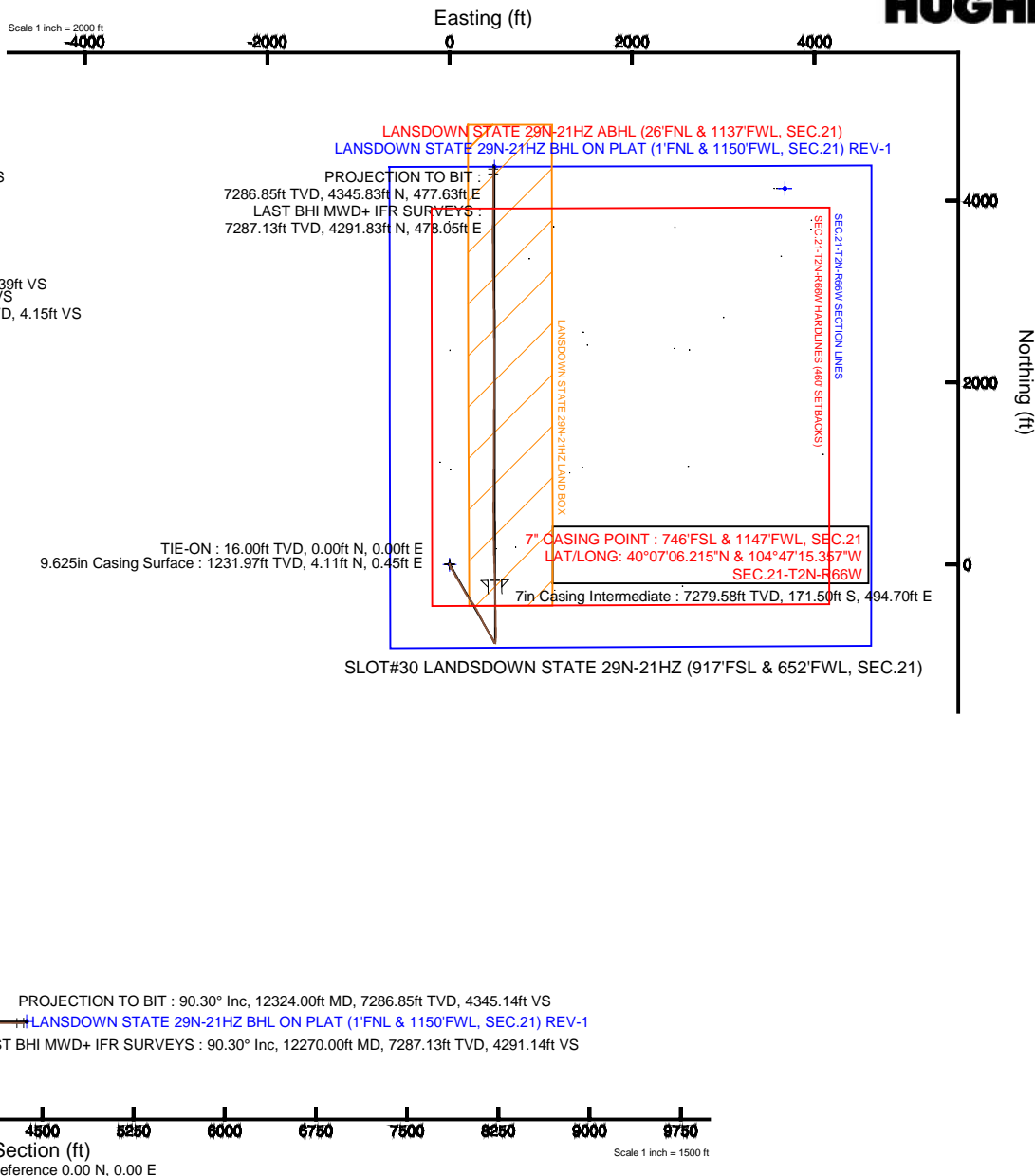


KERR-MCGEE OIL & GAS ONSHORE LP

Location: COLORADO Slot: SLOT#30 LANDSDOWN STATE 29N-21HZ (917'FSL & 652'FWL, SEC.21)
 Field: WELD COUNTY (KERR MCGEE) Well: LANDSDOWN STATE 29N-21HZ
 Facility: SEC.21-T2N-R66W Wellbore: LANDSDOWN STATE 29N-21HZ PWB

Plot reference wellpath is LANDSDOWN STATE 29N-21HZ (REV-A.0) PWP

| | |
|--|--|
| True vertical depths are referenced to XTREME 20 (16'KB) (RKB) | Grid System: NAD83 / Lambert Colorado SP, Northern Zone (601), US feet |
| Measured depths are referenced to XTREME 20 (16'KB) (RKB) | North Reference: True north |
| XTREME 20 (16'KB) (RKB) to Mean Sea Level: 4950 feet | Scale: True distance |
| Mean Sea Level to Mud line (At Slot: SLOT#30 LANDSDOWN STATE 29N-21HZ (917'FSL & 652'FWL, SEC.21)): 0 feet | Depths are in feet |
| Coordinates are in feet referenced to Slot | Created by: ingmjmr on 7/2/2014 |



Actual Wellpath Report

LANDSDOWN STATE 29N-21HZ AWP

Page 1 of 9

REFERENCE WELLPATH IDENTIFICATION

| | | | |
|----------|---------------------------------|----------|--|
| Operator | KERR-MCGEE OIL & GAS ONSHORE LP | Slot | SLOT#30 LANDSDOWN STATE 29N-21HZ (917'FSL & 652'FWL, S |
| Area | COLORADO | Well | LANDSDOWN STATE 29N-21HZ |
| Field | WELD COUNTY (KERR MCGEE) | Wellbore | LANDSDOWN STATE 29N-21HZ AWP |
| Facility | SEC.21-T2N-R66W | | |

REPORT SETUP INFORMATION

| | | | |
|---------------------|---|----------------------|--|
| Projection System | NAD83 / Lambert Colorado SP, Northern Zone (501), US feet | Software System | WellArchitect® 4.0.0 |
| North Reference | True | User | Ingmjmr |
| Scale | 0.999959 | Report Generated | 7/2/2014 at 1:27:01 PM |
| Convergence at slot | n/a | Database/Source file | WA_ANADARKO/LANDSDOWN_STATE_29N-21HZ_AWP.xml |

WELLPATH LOCATION

| | Local coordinates | | Grid coordinates | | Geographic coordinates | |
|-----------------------|-------------------|----------|------------------|-----------------|------------------------|-----------------|
| | North[ft] | East[ft] | Easting[US ft] | Northing[US ft] | Latitude | Longitude |
| Slot Location | -3780.66 | -3966.91 | 3198736.97 | 1286942.45 | 40°07'07.910"N | 104°47'21.725"W |
| Facility Reference Pt | | | 3202672.68 | 1290755.25 | 40°07'45.274"N | 104°46'30.663"W |
| Field Reference Pt | | | 3197771.84 | 1268891.29 | 40°04'09.600"N | 104°47'36.000"W |

WELLPATH DATUM

| | | | |
|--------------------------|-------------------------|--|-------------------|
| Calculation method | Minimum curvature | XTREME 20 (16'KB) (RKB) to Facility Vertical Datum | 4950.00ft |
| Horizontal Reference Pt | Slot | XTREME 20 (16'KB) (RKB) to Mean Sea Level | 4950.00ft |
| Vertical Reference Pt | XTREME 20 (16'KB) (RKB) | XTREME 20 (16'KB) (RKB) to Mud Line at Slot (SLOT#30 LANDSDOWN STATE 29N-21HZ (917'FSL & 652'FWL, SEC.21)) | 4950.00ft |
| MD Reference Pt | XTREME 20 (16'KB) (RKB) | Section Origin | N 0.00, E 0.00 ft |
| Field Vertical Reference | Mean Sea Level | Section Azimuth | 359.92° |

REFERENCE WELLPATH IDENTIFICATION

| | | | |
|----------|---------------------------------|----------|--|
| Operator | KERR-MCGEE OIL & GAS ONSHORE LP | Slot | SLOT#30 LANDSDOWN STATE 29N-21HZ (917'FSL & 652'FWL, S |
| Area | COLORADO | Well | LANDSDOWN STATE 29N-21HZ |
| Field | WELD COUNTY (KERR MCGEE) | Wellbore | LANDSDOWN STATE 29N-21HZ AWP |
| Facility | SEC.21-T2N-R66W | | |

WELLPATH DATA (153 stations) † = interpolated/extrapolated station

| MD [ft] | Inclination [°] | Azimuth [°] | TVD [ft] | Vert Sect [ft] | North [ft] | East [ft] | Latitude | Longitude | DLS [°/100ft] | Comments |
|---------|-----------------|-------------|----------|----------------|------------|-----------|----------------|-----------------|---------------|----------------------------|
| 0.00† | 0.000 | 326.160 | 0.00 | 0.00 | 0.00 | 0.00 | 40°07'07.910"N | 104°47'21.725"W | 0.00 | |
| 16.00 | 0.000 | 326.160 | 16.00 | 0.00 | 0.00 | 0.00 | 40°07'07.910"N | 104°47'21.725"W | 0.00 | TIE-ON |
| 116.00 | 0.540 | 326.160 | 116.00 | 0.39 | 0.39 | -0.26 | 40°07'07.914"N | 104°47'21.728"W | 0.54 | BEGIN GYRO SURVEYS |
| 216.00 | 0.710 | 23.240 | 215.99 | 1.35 | 1.35 | -0.28 | 40°07'07.923"N | 104°47'21.729"W | 0.62 | |
| 316.00 | 0.470 | 267.680 | 315.99 | 1.91 | 1.90 | -0.45 | 40°07'07.929"N | 104°47'21.731"W | 1.01 | |
| 416.00 | 0.640 | 48.430 | 415.99 | 2.26 | 2.26 | -0.44 | 40°07'07.932"N | 104°47'21.731"W | 1.05 | |
| 516.00 | 0.770 | 328.090 | 515.98 | 3.20 | 3.20 | -0.38 | 40°07'07.942"N | 104°47'21.730"W | 0.91 | |
| 616.00 | 0.380 | 262.170 | 615.98 | 3.73 | 3.73 | -1.06 | 40°07'07.947"N | 104°47'21.739"W | 0.71 | |
| 716.00 | 0.670 | 43.540 | 715.98 | 4.11 | 4.10 | -0.98 | 40°07'07.951"N | 104°47'21.738"W | 1.00 | |
| 816.00 | 0.480 | 99.390 | 815.97 | 4.46 | 4.46 | -0.17 | 40°07'07.954"N | 104°47'21.727"W | 0.56 | |
| 916.00 | 0.390 | 85.210 | 915.97 | 4.42 | 4.42 | 0.58 | 40°07'07.954"N | 104°47'21.717"W | 0.14 | |
| 1016.00 | 0.360 | 306.290 | 1015.97 | 4.63 | 4.63 | 0.67 | 40°07'07.956"N | 104°47'21.716"W | 0.70 | |
| 1116.00 | 0.270 | 216.340 | 1115.97 | 4.63 | 4.63 | 0.28 | 40°07'07.956"N | 104°47'21.721"W | 0.45 | |
| 1159.00 | 0.470 | 151.050 | 1158.97 | 4.39 | 4.39 | 0.30 | 40°07'07.953"N | 104°47'21.721"W | 1.01 | TIE-INTO GYRO SURVEYS |
| 1272.00 | 0.210 | 321.820 | 1271.97 | 4.15 | 4.15 | 0.40 | 40°07'07.951"N | 104°47'21.720"W | 0.60 | BEGIN BHI MWD+ IFR SURVEYS |
| 1365.00 | 0.800 | 160.430 | 1364.96 | 3.67 | 3.67 | 0.51 | 40°07'07.946"N | 104°47'21.718"W | 1.08 | |
| 1459.00 | 2.590 | 172.810 | 1458.92 | 0.95 | 0.95 | 1.00 | 40°07'07.919"N | 104°47'21.712"W | 1.93 | |
| 1555.00 | 4.080 | 164.400 | 1554.75 | -4.50 | -4.49 | 2.19 | 40°07'07.866"N | 104°47'21.697"W | 1.63 | |
| 1647.00 | 6.070 | 163.090 | 1646.39 | -12.31 | -12.30 | 4.48 | 40°07'07.788"N | 104°47'21.667"W | 2.17 | |
| 1739.00 | 7.760 | 159.560 | 1737.72 | -22.79 | -22.78 | 8.07 | 40°07'07.685"N | 104°47'21.621"W | 1.89 | |
| 1831.00 | 9.630 | 153.290 | 1828.66 | -35.49 | -35.47 | 13.69 | 40°07'07.559"N | 104°47'21.549"W | 2.28 | |
| 1923.00 | 11.070 | 148.990 | 1919.16 | -49.95 | -49.92 | 21.70 | 40°07'07.417"N | 104°47'21.446"W | 1.78 | |
| 2014.00 | 12.340 | 146.910 | 2008.27 | -65.60 | -65.55 | 31.51 | 40°07'07.262"N | 104°47'21.319"W | 1.47 | |
| 2106.00 | 13.790 | 150.470 | 2097.88 | -83.39 | -83.33 | 42.29 | 40°07'07.087"N | 104°47'21.181"W | 1.80 | |
| 2198.00 | 15.240 | 151.060 | 2186.94 | -103.53 | -103.45 | 53.54 | 40°07'06.888"N | 104°47'21.036"W | 1.58 | |
| 2289.00 | 17.120 | 150.240 | 2274.34 | -125.64 | -125.55 | 65.98 | 40°07'06.669"N | 104°47'20.876"W | 2.08 | |
| 2381.00 | 16.460 | 149.850 | 2362.41 | -148.69 | -148.58 | 79.25 | 40°07'06.442"N | 104°47'20.705"W | 0.73 | |
| 2473.00 | 16.620 | 148.720 | 2450.61 | -171.22 | -171.09 | 92.63 | 40°07'06.219"N | 104°47'20.533"W | 0.39 | |
| 2564.00 | 16.510 | 148.850 | 2537.83 | -193.43 | -193.28 | 106.07 | 40°07'06.000"N | 104°47'20.360"W | 0.13 | |
| 2656.00 | 17.170 | 150.250 | 2625.88 | -216.43 | -216.26 | 119.57 | 40°07'05.773"N | 104°47'20.186"W | 0.84 | |

REFERENCE WELLPATH IDENTIFICATION

| | | | |
|----------|---------------------------------|----------|--|
| Operator | KERR-MCGEE OIL & GAS ONSHORE LP | Slot | SLOT#30 LANDSDOWN STATE 29N-21HZ (917'FSL & 652'FWL, S |
| Area | COLORADO | Well | LANDSDOWN STATE 29N-21HZ |
| Field | WELD COUNTY (KERR MCGEE) | Wellbore | LANDSDOWN STATE 29N-21HZ AWB |
| Facility | SEC.21-T2N-R66W | | |

WELLPATH DATA (153 stations)

| MD [ft] | Inclination [°] | Azimuth [°] | TVD [ft] | Vert Sect [ft] | North [ft] | East [ft] | Latitude | Longitude | DLS [°/100ft] | Comments |
|------------|--------------------|----------------|-------------|-------------------|---------------|--------------|----------------|-----------------|------------------|----------|
| 2748.00 | 16.900 | 150.130 | 2713.85 | -239.83 | -239.64 | 132.97 | 40°07'05.542"N | 104°47'20.013"W | 0.30 | |
| 2839.00 | 16.820 | 152.290 | 2800.94 | -262.98 | -262.77 | 145.68 | 40°07'05.313"N | 104°47'19.850"W | 0.69 | |
| 2931.00 | 16.480 | 151.810 | 2889.08 | -286.28 | -286.05 | 158.03 | 40°07'05.083"N | 104°47'19.691"W | 0.40 | |
| 3022.00 | 16.990 | 149.960 | 2976.23 | -309.18 | -308.94 | 170.79 | 40°07'04.857"N | 104°47'19.527"W | 0.81 | |
| 3114.00 | 17.520 | 147.910 | 3064.09 | -332.57 | -332.31 | 184.87 | 40°07'04.626"N | 104°47'19.345"W | 0.88 | |
| 3205.00 | 15.430 | 145.000 | 3151.35 | -354.12 | -353.83 | 199.09 | 40°07'04.413"N | 104°47'19.162"W | 2.47 | |
| 3297.00 | 16.110 | 139.570 | 3239.89 | -373.88 | -373.58 | 214.39 | 40°07'04.218"N | 104°47'18.965"W | 1.77 | |
| 3388.00 | 15.850 | 141.820 | 3327.37 | -393.28 | -392.95 | 230.26 | 40°07'04.027"N | 104°47'18.761"W | 0.74 | |
| 3480.00 | 14.160 | 147.110 | 3416.24 | -412.63 | -412.28 | 244.14 | 40°07'03.836"N | 104°47'18.582"W | 2.36 | |
| 3572.00 | 13.310 | 145.340 | 3505.61 | -430.81 | -430.44 | 256.28 | 40°07'03.656"N | 104°47'18.426"W | 1.03 | |
| 3664.00 | 15.300 | 149.210 | 3594.75 | -449.97 | -449.58 | 268.51 | 40°07'03.467"N | 104°47'18.269"W | 2.40 | |
| 3755.00 | 15.670 | 149.240 | 3682.45 | -470.86 | -470.46 | 280.94 | 40°07'03.261"N | 104°47'18.109"W | 0.41 | |
| 3847.00 | 16.320 | 152.270 | 3770.89 | -493.00 | -492.58 | 293.31 | 40°07'03.042"N | 104°47'17.950"W | 1.15 | |
| 3938.00 | 16.740 | 151.880 | 3858.13 | -515.89 | -515.45 | 305.44 | 40°07'02.816"N | 104°47'17.793"W | 0.48 | |
| 4030.00 | 16.310 | 150.730 | 3946.33 | -538.86 | -538.41 | 318.00 | 40°07'02.589"N | 104°47'17.632"W | 0.59 | |
| 4121.00 | 16.490 | 153.010 | 4033.62 | -561.53 | -561.06 | 330.11 | 40°07'02.366"N | 104°47'17.476"W | 0.73 | |
| 4213.00 | 16.360 | 152.660 | 4121.87 | -584.69 | -584.21 | 341.99 | 40°07'02.137"N | 104°47'17.323"W | 0.18 | |
| 4298.00 | 17.590 | 155.680 | 4203.17 | -607.05 | -606.55 | 352.77 | 40°07'01.916"N | 104°47'17.184"W | 1.78 | |
| 4384.00 | 16.730 | 155.690 | 4285.34 | -630.19 | -629.67 | 363.22 | 40°07'01.688"N | 104°47'17.050"W | 1.00 | |
| 4469.00 | 16.360 | 151.770 | 4366.82 | -651.90 | -651.36 | 373.92 | 40°07'01.473"N | 104°47'16.912"W | 1.38 | |
| 4554.00 | 15.440 | 149.050 | 4448.57 | -672.17 | -671.62 | 385.40 | 40°07'01.273"N | 104°47'16.764"W | 1.39 | |
| 4639.00 | 16.160 | 151.450 | 4530.36 | -692.28 | -691.71 | 396.87 | 40°07'01.074"N | 104°47'16.617"W | 1.14 | |
| 4724.00 | 16.340 | 149.550 | 4611.96 | -712.99 | -712.41 | 408.59 | 40°07'00.870"N | 104°47'16.466"W | 0.66 | |
| 4809.00 | 16.700 | 149.700 | 4693.45 | -733.86 | -733.26 | 420.81 | 40°07'00.664"N | 104°47'16.309"W | 0.43 | |
| 4895.00 | 15.950 | 149.760 | 4775.99 | -754.76 | -754.14 | 432.99 | 40°07'00.457"N | 104°47'16.152"W | 0.87 | |
| 4980.00 | 14.990 | 149.150 | 4857.91 | -774.30 | -773.67 | 444.51 | 40°07'00.265"N | 104°47'16.003"W | 1.15 | |
| 5065.00 | 13.590 | 149.400 | 4940.27 | -792.35 | -791.70 | 455.23 | 40°07'00.086"N | 104°47'15.865"W | 1.65 | |
| 5150.00 | 12.020 | 152.290 | 5023.16 | -808.80 | -808.13 | 464.43 | 40°06'59.924"N | 104°47'15.747"W | 1.99 | |
| 5235.00 | 10.140 | 150.340 | 5106.57 | -823.15 | -822.47 | 472.25 | 40°06'59.782"N | 104°47'15.646"W | 2.25 | |
| 5321.00 | 8.270 | 152.590 | 5191.46 | -835.23 | -834.54 | 478.85 | 40°06'59.663"N | 104°47'15.561"W | 2.21 | |

REFERENCE WELLPATH IDENTIFICATION

| | | | |
|----------|---------------------------------|----------|--|
| Operator | KERR-MCGEE OIL & GAS ONSHORE LP | Slot | SLOT#30 LANDSDOWN STATE 29N-21HZ (917'FSL & 652'FWL, S |
| Area | COLORADO | Well | LANDSDOWN STATE 29N-21HZ |
| Field | WELD COUNTY (KERR MCGEE) | Wellbore | LANDSDOWN STATE 29N-21HZ AWB |
| Facility | SEC.21-T2N-R66W | | |

WELLPATH DATA (153 stations)

| MD [ft] | Inclination [°] | Azimuth [°] | TVD [ft] | Vert Sect [ft] | North [ft] | East [ft] | Latitude | Longitude | DLS [°/100ft] | Comments |
|------------|--------------------|----------------|-------------|-------------------|---------------|--------------|----------------|-----------------|------------------|----------|
| 5406.00 | 6.940 | 152.150 | 5275.71 | -845.20 | -844.51 | 484.06 | 40°06'59.564"N | 104°47'15.494"W | 1.57 | |
| 5491.00 | 5.600 | 149.570 | 5360.20 | -853.32 | -852.63 | 488.56 | 40°06'59.484"N | 104°47'15.436"W | 1.61 | |
| 5576.00 | 4.160 | 153.330 | 5444.89 | -859.66 | -858.96 | 492.04 | 40°06'59.422"N | 104°47'15.392"W | 1.73 | |
| 5661.00 | 2.960 | 155.110 | 5529.72 | -864.41 | -863.70 | 494.35 | 40°06'59.375"N | 104°47'15.362"W | 1.42 | |
| 5746.00 | 1.870 | 172.220 | 5614.65 | -867.78 | -867.07 | 495.46 | 40°06'59.341"N | 104°47'15.348"W | 1.52 | |
| 5831.00 | 0.030 | 50.730 | 5699.63 | -869.14 | -868.43 | 495.67 | 40°06'59.328"N | 104°47'15.345"W | 2.22 | |
| 6001.00 | 0.310 | 26.200 | 5869.63 | -868.70 | -867.99 | 495.91 | 40°06'59.332"N | 104°47'15.342"W | 0.17 | |
| 6172.00 | 0.270 | 288.200 | 6040.63 | -868.16 | -867.45 | 495.73 | 40°06'59.338"N | 104°47'15.344"W | 0.26 | |
| 6342.00 | 0.290 | 89.630 | 6210.63 | -868.03 | -867.32 | 495.78 | 40°06'59.339"N | 104°47'15.344"W | 0.33 | |
| 6512.00 | 1.070 | 115.160 | 6380.62 | -868.70 | -867.99 | 497.64 | 40°06'59.332"N | 104°47'15.320"W | 0.48 | |
| 6597.00 | 0.440 | 68.190 | 6465.61 | -868.92 | -868.21 | 498.67 | 40°06'59.330"N | 104°47'15.306"W | 0.98 | |
| 6682.00 | 0.690 | 60.960 | 6550.61 | -868.55 | -867.84 | 499.42 | 40°06'59.334"N | 104°47'15.297"W | 0.31 | |
| 6767.00 | 1.320 | 52.730 | 6635.59 | -867.71 | -867.00 | 500.64 | 40°06'59.342"N | 104°47'15.281"W | 0.76 | |
| 6810.00 | 5.520 | 5.340 | 6678.51 | -865.35 | -864.64 | 501.23 | 40°06'59.366"N | 104°47'15.273"W | 10.99 | |
| 6853.00 | 11.740 | 5.100 | 6721.00 | -858.93 | -858.21 | 501.81 | 40°06'59.429"N | 104°47'15.266"W | 14.47 | |
| 6896.00 | 18.010 | 7.430 | 6762.54 | -847.97 | -847.25 | 503.06 | 40°06'59.537"N | 104°47'15.250"W | 14.64 | |
| 6938.00 | 19.780 | 5.590 | 6802.28 | -834.46 | -833.74 | 504.59 | 40°06'59.671"N | 104°47'15.230"W | 4.45 | |
| 6981.00 | 21.680 | 4.210 | 6842.49 | -819.30 | -818.58 | 505.89 | 40°06'59.821"N | 104°47'15.213"W | 4.56 | |
| 7023.00 | 23.890 | 1.950 | 6881.21 | -803.06 | -802.34 | 506.74 | 40°06'59.981"N | 104°47'15.202"W | 5.66 | |
| 7066.00 | 29.050 | 0.300 | 6919.69 | -783.91 | -783.18 | 507.10 | 40°07'00.170"N | 104°47'15.198"W | 12.12 | |
| 7108.00 | 35.570 | 0.180 | 6955.17 | -761.47 | -760.75 | 507.19 | 40°07'00.392"N | 104°47'15.197"W | 15.52 | |
| 7151.00 | 36.970 | 359.300 | 6989.84 | -736.03 | -735.31 | 507.07 | 40°07'00.644"N | 104°47'15.198"W | 3.47 | |
| 7193.00 | 38.850 | 358.860 | 7022.97 | -710.23 | -709.51 | 506.65 | 40°07'00.899"N | 104°47'15.204"W | 4.52 | |
| 7236.00 | 44.680 | 358.730 | 7055.03 | -681.61 | -680.89 | 506.05 | 40°07'01.181"N | 104°47'15.211"W | 13.56 | |
| 7279.00 | 51.040 | 358.960 | 7083.87 | -649.75 | -649.02 | 505.41 | 40°07'01.496"N | 104°47'15.220"W | 14.80 | |
| 7322.00 | 51.520 | 359.650 | 7110.77 | -616.20 | -615.48 | 505.00 | 40°07'01.828"N | 104°47'15.225"W | 1.68 | |
| 7364.00 | 51.250 | 359.380 | 7136.98 | -583.38 | -582.66 | 504.73 | 40°07'02.152"N | 104°47'15.228"W | 0.82 | |
| 7407.00 | 56.790 | 359.090 | 7162.23 | -548.60 | -547.88 | 504.26 | 40°07'02.496"N | 104°47'15.234"W | 12.90 | |
| 7449.00 | 63.540 | 357.940 | 7183.11 | -512.20 | -511.48 | 503.30 | 40°07'02.855"N | 104°47'15.247"W | 16.25 | |
| 7492.00 | 64.810 | 358.030 | 7201.84 | -473.52 | -472.80 | 501.94 | 40°07'03.238"N | 104°47'15.264"W | 2.96 | |

REFERENCE WELLPATH IDENTIFICATION

| | | | |
|----------|---------------------------------|----------|--|
| Operator | KERR-MCGEE OIL & GAS ONSHORE LP | Slot | SLOT#30 LANDSDOWN STATE 29N-21HZ (917'FSL & 652'FWL, S |
| Area | COLORADO | Well | LANDSDOWN STATE 29N-21HZ |
| Field | WELD COUNTY (KERR MCGEE) | Wellbore | LANDSDOWN STATE 29N-21HZ AWP |
| Facility | SEC.21-T2N-R66W | | |

WELLPATH DATA (153 stations) † = interpolated/extrapolated station

| MD [ft] | Inclination [°] | Azimuth [°] | TVD [ft] | Vert Sect [ft] | North [ft] | East [ft] | Latitude | Longitude | DLS [°/100ft] | Comments |
|------------|--------------------|----------------|-------------|-------------------|---------------|--------------|----------------|-----------------|------------------|-----------------|
| 7534.00 | 65.330 | 358.150 | 7219.55 | -435.45 | -434.74 | 500.67 | 40°07'03.614"N | 104°47'15.280"W | 1.26 | |
| 7577.00 | 68.030 | 359.320 | 7236.57 | -395.98 | -395.26 | 499.80 | 40°07'04.004"N | 104°47'15.292"W | 6.76 | |
| 7619.00 | 73.050 | 358.700 | 7250.56 | -356.40 | -355.68 | 499.12 | 40°07'04.395"N | 104°47'15.300"W | 12.03 | |
| 7662.00 | 78.180 | 358.560 | 7261.24 | -314.77 | -314.06 | 498.12 | 40°07'04.806"N | 104°47'15.313"W | 11.93 | |
| 7705.00 | 79.900 | 359.040 | 7269.41 | -272.56 | -271.85 | 497.24 | 40°07'05.223"N | 104°47'15.325"W | 4.15 | |
| 7748.00 | 83.670 | 358.900 | 7275.55 | -230.02 | -229.31 | 496.47 | 40°07'05.644"N | 104°47'15.334"W | 8.77 | |
| 7768.00 | 84.890 | 357.440 | 7277.55 | -210.13 | -209.42 | 495.84 | 40°07'05.840"N | 104°47'15.343"W | 9.49 | |
| 7806.00† | 88.975 | 359.131 | 7279.58 | -172.21 | -171.50 | 494.70 | 40°07'06.215"N | 104°47'15.357"W | 11.63 | 7" CASING POINT |
| 7808.00 | 89.190 | 359.220 | 7279.61 | -170.21 | -169.50 | 494.67 | 40°07'06.235"N | 104°47'15.358"W | 11.63 | |
| 7899.00 | 91.320 | 358.220 | 7279.21 | -79.23 | -78.53 | 492.64 | 40°07'07.134"N | 104°47'15.384"W | 2.59 | |
| 7991.00 | 90.550 | 357.850 | 7277.71 | 12.70 | 13.40 | 489.49 | 40°07'08.042"N | 104°47'15.424"W | 0.93 | |
| 8082.00 | 90.400 | 357.940 | 7276.95 | 103.64 | 104.34 | 486.14 | 40°07'08.941"N | 104°47'15.467"W | 0.19 | |
| 8167.00 | 89.840 | 359.040 | 7276.77 | 188.62 | 189.31 | 483.91 | 40°07'09.781"N | 104°47'15.496"W | 1.45 | |
| 8252.00 | 88.860 | 359.650 | 7277.74 | 273.60 | 274.30 | 482.93 | 40°07'10.621"N | 104°47'15.509"W | 1.36 | |
| 8337.00 | 88.880 | 359.430 | 7279.42 | 358.59 | 359.28 | 482.25 | 40°07'11.460"N | 104°47'15.517"W | 0.26 | |
| 8422.00 | 89.160 | 359.410 | 7280.87 | 443.57 | 444.26 | 481.39 | 40°07'12.300"N | 104°47'15.528"W | 0.33 | |
| 8506.00 | 89.040 | 359.080 | 7282.19 | 527.55 | 528.24 | 480.28 | 40°07'13.130"N | 104°47'15.543"W | 0.42 | |
| 8592.00 | 89.810 | 359.760 | 7283.05 | 613.54 | 614.23 | 479.41 | 40°07'13.980"N | 104°47'15.554"W | 1.19 | |
| 8676.00 | 89.750 | 0.950 | 7283.37 | 697.54 | 698.23 | 479.93 | 40°07'14.810"N | 104°47'15.547"W | 1.42 | |
| 8761.00 | 89.900 | 0.630 | 7283.63 | 782.53 | 783.22 | 481.11 | 40°07'15.650"N | 104°47'15.532"W | 0.42 | |
| 8846.00 | 89.900 | 0.430 | 7283.78 | 867.52 | 868.22 | 481.89 | 40°07'16.490"N | 104°47'15.522"W | 0.24 | |
| 8931.00 | 90.240 | 0.530 | 7283.68 | 952.52 | 953.21 | 482.60 | 40°07'17.330"N | 104°47'15.513"W | 0.42 | |
| 9016.00 | 90.060 | 0.040 | 7283.46 | 1037.52 | 1038.21 | 483.03 | 40°07'18.170"N | 104°47'15.507"W | 0.61 | |
| 9101.00 | 90.270 | 0.450 | 7283.21 | 1122.52 | 1123.21 | 483.39 | 40°07'19.010"N | 104°47'15.503"W | 0.54 | |
| 9186.00 | 90.550 | 0.350 | 7282.60 | 1207.51 | 1208.20 | 483.98 | 40°07'19.850"N | 104°47'15.495"W | 0.35 | |
| 9272.00 | 90.830 | 0.380 | 7281.57 | 1293.50 | 1294.20 | 484.53 | 40°07'20.699"N | 104°47'15.488"W | 0.33 | |
| 9357.00 | 90.800 | 0.150 | 7280.36 | 1378.49 | 1379.19 | 484.92 | 40°07'21.539"N | 104°47'15.483"W | 0.27 | |
| 9442.00 | 90.490 | 359.980 | 7279.40 | 1463.49 | 1464.18 | 485.02 | 40°07'22.379"N | 104°47'15.481"W | 0.42 | |
| 9527.00 | 90.000 | 0.040 | 7279.04 | 1548.48 | 1549.18 | 485.04 | 40°07'23.219"N | 104°47'15.481"W | 0.58 | |
| 9611.00 | 89.380 | 0.670 | 7279.49 | 1632.48 | 1633.18 | 485.56 | 40°07'24.049"N | 104°47'15.475"W | 1.05 | |

REFERENCE WELLPATH IDENTIFICATION

| | | | |
|----------|---------------------------------|----------|--|
| Operator | KERR-MCGEE OIL & GAS ONSHORE LP | Slot | SLOT#30 LANDSDOWN STATE 29N-21HZ (917'FSL & 652'FWL, S |
| Area | COLORADO | Well | LANDSDOWN STATE 29N-21HZ |
| Field | WELD COUNTY (KERR MCGEE) | Wellbore | LANDSDOWN STATE 29N-21HZ AWB |
| Facility | SEC.21-T2N-R66W | | |

WELLPATH DATA (153 stations)

| MD [ft] | Inclination [°] | Azimuth [°] | TVD [ft] | Vert Sect [ft] | North [ft] | East [ft] | Latitude | Longitude | DLS [°/100ft] | Comments |
|------------|--------------------|----------------|-------------|-------------------|---------------|--------------|----------------|-----------------|------------------|----------|
| 9697.00 | 89.220 | 0.420 | 7280.54 | 1718.47 | 1719.17 | 486.37 | 40°07'24.899"N | 104°47'15.464"W | 0.35 | |
| 9782.00 | 89.530 | 0.360 | 7281.47 | 1803.46 | 1804.16 | 486.95 | 40°07'25.739"N | 104°47'15.456"W | 0.37 | |
| 9867.00 | 89.530 | 0.490 | 7282.17 | 1888.45 | 1889.15 | 487.58 | 40°07'26.579"N | 104°47'15.448"W | 0.15 | |
| 9952.00 | 89.530 | 0.330 | 7282.86 | 1973.45 | 1974.15 | 488.19 | 40°07'27.419"N | 104°47'15.441"W | 0.19 | |
| 10037.00 | 89.600 | 0.100 | 7283.51 | 2058.44 | 2059.15 | 488.51 | 40°07'28.259"N | 104°47'15.436"W | 0.28 | |
| 10123.00 | 89.590 | 359.790 | 7284.12 | 2144.44 | 2145.14 | 488.43 | 40°07'29.109"N | 104°47'15.437"W | 0.36 | |
| 10208.00 | 89.690 | 359.780 | 7284.65 | 2229.44 | 2230.14 | 488.11 | 40°07'29.948"N | 104°47'15.442"W | 0.12 | |
| 10293.00 | 89.560 | 359.600 | 7285.21 | 2314.44 | 2315.14 | 487.65 | 40°07'30.788"N | 104°47'15.447"W | 0.26 | |
| 10378.00 | 89.900 | 359.680 | 7285.61 | 2399.44 | 2400.14 | 487.12 | 40°07'31.628"N | 104°47'15.454"W | 0.41 | |
| 10464.00 | 90.030 | 359.430 | 7285.66 | 2485.43 | 2486.13 | 486.45 | 40°07'32.478"N | 104°47'15.463"W | 0.33 | |
| 10549.00 | 90.210 | 359.830 | 7285.48 | 2570.43 | 2571.13 | 485.90 | 40°07'33.318"N | 104°47'15.470"W | 0.52 | |
| 10634.00 | 90.490 | 359.070 | 7284.96 | 2655.43 | 2656.12 | 485.08 | 40°07'34.158"N | 104°47'15.480"W | 0.95 | |
| 10719.00 | 90.890 | 359.430 | 7283.94 | 2740.42 | 2741.11 | 483.97 | 40°07'34.998"N | 104°47'15.495"W | 0.63 | |
| 10804.00 | 90.700 | 358.920 | 7282.76 | 2825.40 | 2826.09 | 482.75 | 40°07'35.838"N | 104°47'15.510"W | 0.64 | |
| 10889.00 | 90.980 | 359.290 | 7281.51 | 2910.38 | 2911.07 | 481.42 | 40°07'36.678"N | 104°47'15.527"W | 0.55 | |
| 10974.00 | 91.070 | 358.690 | 7279.99 | 2995.36 | 2996.05 | 479.92 | 40°07'37.517"N | 104°47'15.547"W | 0.71 | |
| 11059.00 | 90.950 | 358.620 | 7278.50 | 3080.32 | 3081.01 | 477.93 | 40°07'38.357"N | 104°47'15.572"W | 0.16 | |
| 11145.00 | 91.170 | 358.760 | 7276.91 | 3166.29 | 3166.97 | 475.96 | 40°07'39.206"N | 104°47'15.598"W | 0.30 | |
| 11229.00 | 90.180 | 359.170 | 7275.92 | 3250.27 | 3250.95 | 474.44 | 40°07'40.036"N | 104°47'15.617"W | 1.28 | |
| 11315.00 | 89.010 | 359.940 | 7276.52 | 3336.26 | 3336.94 | 473.77 | 40°07'40.886"N | 104°47'15.626"W | 1.63 | |
| 11400.00 | 89.160 | 359.640 | 7277.88 | 3421.25 | 3421.93 | 473.46 | 40°07'41.726"N | 104°47'15.630"W | 0.39 | |
| 11485.00 | 89.260 | 359.890 | 7279.05 | 3506.24 | 3506.92 | 473.11 | 40°07'42.566"N | 104°47'15.634"W | 0.32 | |
| 11570.00 | 89.310 | 359.380 | 7280.11 | 3591.24 | 3591.92 | 472.57 | 40°07'43.406"N | 104°47'15.641"W | 0.60 | |
| 11655.00 | 88.920 | 0.520 | 7281.43 | 3676.22 | 3676.90 | 472.50 | 40°07'44.246"N | 104°47'15.642"W | 1.42 | |
| 11740.00 | 89.040 | 1.110 | 7282.94 | 3761.20 | 3761.88 | 473.71 | 40°07'45.085"N | 104°47'15.627"W | 0.71 | |
| 11825.00 | 89.290 | 1.020 | 7284.18 | 3846.17 | 3846.86 | 475.29 | 40°07'45.925"N | 104°47'15.606"W | 0.31 | |
| 11910.00 | 89.290 | 0.550 | 7285.23 | 3931.16 | 3931.84 | 476.45 | 40°07'46.765"N | 104°47'15.591"W | 0.55 | |
| 11995.00 | 89.660 | 0.340 | 7286.01 | 4016.15 | 4016.84 | 477.11 | 40°07'47.605"N | 104°47'15.583"W | 0.50 | |
| 12081.00 | 89.720 | 0.450 | 7286.48 | 4102.15 | 4102.83 | 477.71 | 40°07'48.455"N | 104°47'15.575"W | 0.15 | |
| 12166.00 | 89.780 | 0.390 | 7286.85 | 4187.14 | 4187.83 | 478.33 | 40°07'49.295"N | 104°47'15.567"W | 0.10 | |

REFERENCE WELLPATH IDENTIFICATION

| | | | |
|----------|---------------------------------|----------|--|
| Operator | KERR-MCGEE OIL & GAS ONSHORE LP | Slot | SLOT#30 LANDSDOWN STATE 29N-21HZ (917'FSL & 652'FWL, S |
| Area | COLORADO | Well | LANDSDOWN STATE 29N-21HZ |
| Field | WELD COUNTY (KERR MCGEE) | Wellbore | LANDSDOWN STATE 29N-21HZ AWP |
| Facility | SEC.21-T2N-R66W | | |

WELLPATH DATA (153 stations)

| MD [ft] | Inclination [°] | Azimuth [°] | TVD [ft] | Vert Sect [ft] | North [ft] | East [ft] | Latitude | Longitude | DLS [°/100ft] | Comments |
|----------|-----------------|-------------|----------|----------------|------------|-----------|----------------|-----------------|---------------|---------------------------|
| 12251.00 | 89.810 | 359.460 | 7287.15 | 4272.14 | 4272.83 | 478.22 | 40°07'50.135"N | 104°47'15.568"W | 1.09 | |
| 12270.00 | 90.300 | 359.550 | 7287.13 | 4291.14 | 4291.83 | 478.05 | 40°07'50.322"N | 104°47'15.570"W | 2.62 | LAST BHI MWD+ IFR SURVEYS |
| 12324.00 | 90.300 | 359.550 | 7286.85 | 4345.14 | 4345.83 | 477.63 | 40°07'50.856"N | 104°47'15.576"W | 0.00 | PROJECTION TO BIT |

HOLE & CASING SECTIONS -

Ref Wellbore: LANDSDOWN STATE 29N-21HZ AWP Ref Wellpath: LANDSDOWN STATE 29N-21HZ AWP

| String/Diameter | Start MD [ft] | End MD [ft] | Interval [ft] | Start TVD [ft] | End TVD [ft] | Start N/S [ft] | Start E/W [ft] | End N/S [ft] | End E/W [ft] |
|-------------------------|---------------|-------------|---------------|----------------|--------------|----------------|----------------|--------------|--------------|
| 13.5in Open Hole | 16.00 | 1232.00 | 1216.00 | 16.00 | 1231.97 | 0.00 | 0.00 | 4.11 | 0.45 |
| 9.625in Casing Surface | 16.00 | 1232.00 | 1216.00 | 16.00 | 1231.97 | 0.00 | 0.00 | 4.11 | 0.45 |
| 8.75in Open Hole | 1232.00 | 7816.00 | 6584.00 | 1231.97 | 7279.71 | 4.11 | 0.45 | -161.50 | 494.56 |
| 7in Casing Intermediate | 16.00 | 7806.00 | 7790.00 | 16.00 | 7279.58 | 0.00 | 0.00 | -171.50 | 494.70 |
| 6in Open Hole | 7816.00 | 12324.00 | 4508.00 | 7279.71 | 7286.85 | -161.50 | 494.56 | 4345.83 | 477.63 |

REFERENCE WELLPATH IDENTIFICATION

| | | | |
|----------|---------------------------------|----------|--|
| Operator | KERR-MCGEE OIL & GAS ONSHORE LP | Slot | SLOT#30 LANDSDOWN STATE 29N-21HZ (917'FSL & 652'FWL, S |
| Area | COLORADO | Well | LANDSDOWN STATE 29N-21HZ |
| Field | WELD COUNTY (KERR MCGEE) | Wellbore | LANDSDOWN STATE 29N-21HZ AWB |
| Facility | SEC.21-T2N-R66W | | |

TARGETS

| Name | MD [ft] | TVD [ft] | North [ft] | East [ft] | Grid East [US ft] | Grid North [US ft] | Latitude | Longitude | Shape |
|---|------------|-------------|---------------|--------------|----------------------|-----------------------|----------------|-----------------|---------|
| SEC.21-T2N-R66W HARDLINES (460' SETBACKS) | | -56.00 | 4132.18 | 3677.14 | 3202380.72 | 1291103.80 | 40°07'48.742"N | 104°46'34.385"W | polygon |
| SEC.21-T2N-R66W SECTION LINES | | -56.00 | 4132.18 | 3677.14 | 3202380.72 | 1291103.80 | 40°07'48.742"N | 104°46'34.385"W | polygon |
| LANDSDOWN STATE 29N-21HZ BHL ON PLAT (1'FNL & 1150'FWL, SEC.21) REV-1 | | 7275.00 | 4371.22 | 490.76 | 3199192.66 | 1291317.28 | 40°07'51.107"N | 104°47'15.407"W | point |
| LANDSDOWN STATE 29N-21HZ LAND BOX | | 7275.00 | 0.00 | 0.00 | 3198736.97 | 1286942.45 | 40°07'07.910"N | 104°47'21.725"W | polygon |

WELLPATH COMPOSITION -

Ref Wellbore: LANDSDOWN STATE 29N-21HZ AWB Ref Wellpath: LANDSDOWN STATE 29N-21HZ AWP

| Start MD [ft] | End MD [ft] | Positional Uncertainty Model | Log Name/Comment | Wellbore |
|------------------|----------------|--------------------------------------|--|------------------------------|
| 16.00 | 1159.00 | Generic gyro - continuous (Standard) | MS ENERGY GYRO SURVEYS <100-1159> | LANDSDOWN STATE 29N-21HZ AWE |
| 1159.00 | 7768.00 | NaviTrak (MAGCORR,IFR) | BHI MWD+IFR SURVEYS 8 3/4" HOLE <1272-7768> | LANDSDOWN STATE 29N-21HZ AWE |
| 7768.00 | 12270.00 | NaviTrak (MAGCORR,IFR) | BHI MWD+IFR SURVEYS 6 1/8" HOLE <7808-12270> | LANDSDOWN STATE 29N-21HZ AWE |
| 12270.00 | 12324.00 | Blind Drilling (std) | Projection to bit | LANDSDOWN STATE 29N-21HZ AWE |

Actual Wellpath Report

LANDSDOWN STATE 29N-21HZ AWP

Page 9 of 9

REFERENCE WELLPATH IDENTIFICATION

| | | | |
|----------|---------------------------------|----------|--|
| Operator | KERR-MCGEE OIL & GAS ONSHORE LP | Slot | SLOT#30 LANDSDOWN STATE 29N-21HZ (917'FSL & 652'FWL, S |
| Area | COLORADO | Well | LANDSDOWN STATE 29N-21HZ |
| Field | WELD COUNTY (KERR MCGEE) | Wellbore | LANDSDOWN STATE 29N-21HZ AWB |
| Facility | SEC.21-T2N-R66W | | |

WELLPATH COMMENTS

| MD [ft] | Inclination [°] | Azimuth [°] | TVD [ft] | Comment |
|------------|--------------------|----------------|-------------|----------------------------|
| 16.00 | 0.000 | 326.160 | 16.00 | TIE-ON |
| 116.00 | 0.540 | 326.160 | 116.00 | BEGIN GYRO SURVEYS |
| 1159.00 | 0.470 | 151.050 | 1158.97 | TIE-INTO GYRO SURVEYS |
| 1272.00 | 0.210 | 321.820 | 1271.97 | BEGIN BHI MWD+ IFR SURVEYS |
| 7806.00 | 88.975 | 359.131 | 7279.58 | 7" CASING POINT |
| 12270.00 | 90.300 | 359.550 | 7287.13 | LAST BHI MWD+ IFR SURVEYS |
| 12324.00 | 90.300 | 359.550 | 7286.85 | PROJECTION TO BIT |