

INC 1.55 AZ 248.58
VS 14.62

MD 4123 TVD 4085.07
INC 1.25 AZ 244.02
VS 12.45

MD 4217 TVD 4179.04
INC 1.25 AZ 228.26
VS 10.71

ROP (Ft/Hr)
Gamma (API)

PARKMAN 4100' MD 4062' TVD



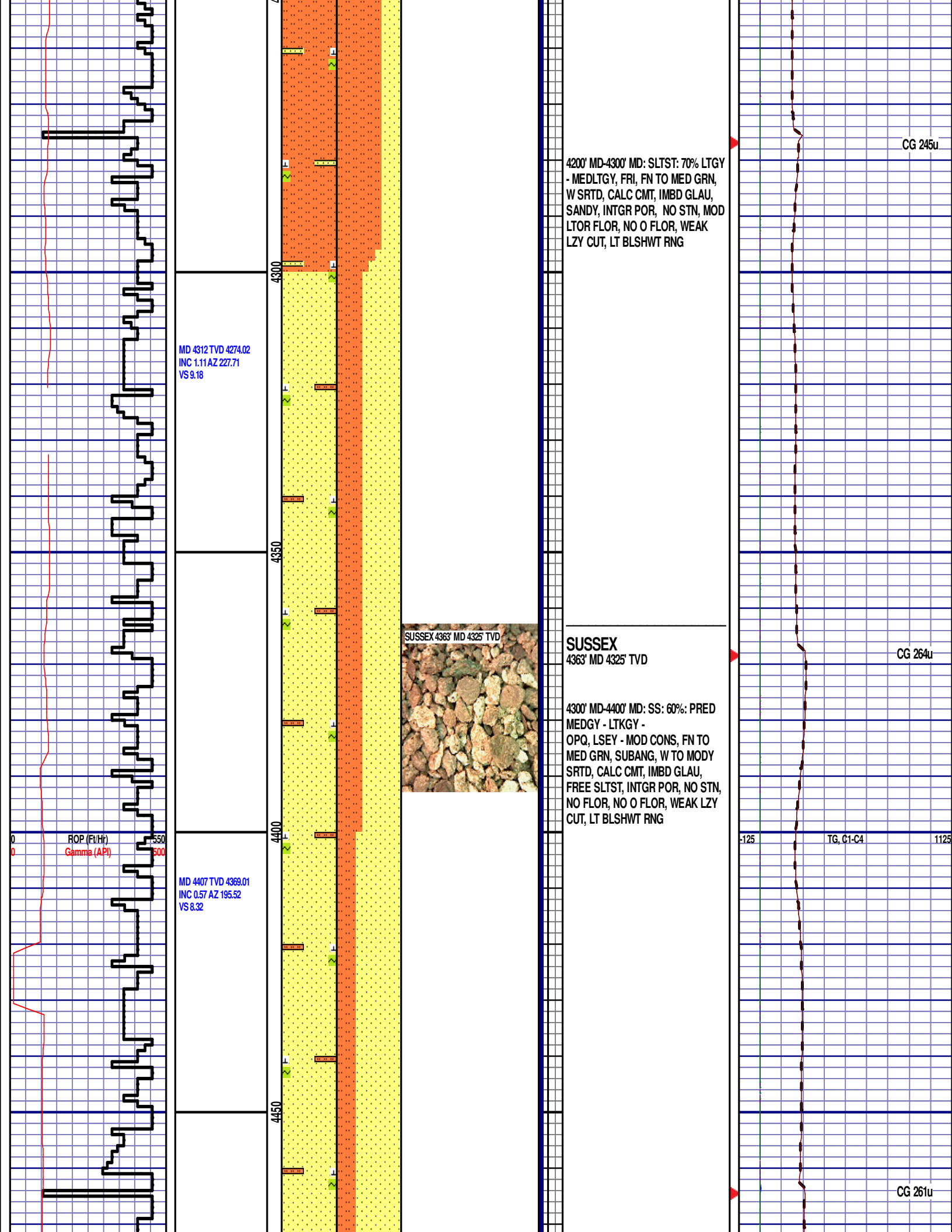
4000' MD-4100' MD: SS: 60%: PRED
MEDGY - LTKGY -
OPQ, LSEY - MOD CONS, FN TO
MED GRN, SUBANG, W TO MODY
SRTD, CALC CMT, IMBD GLAU,
FREE SLTST, INTGR POR, NO STN,
NO FLOR, NO O FLOR, WEAK LZY
CUT, LT BLSHWT RING

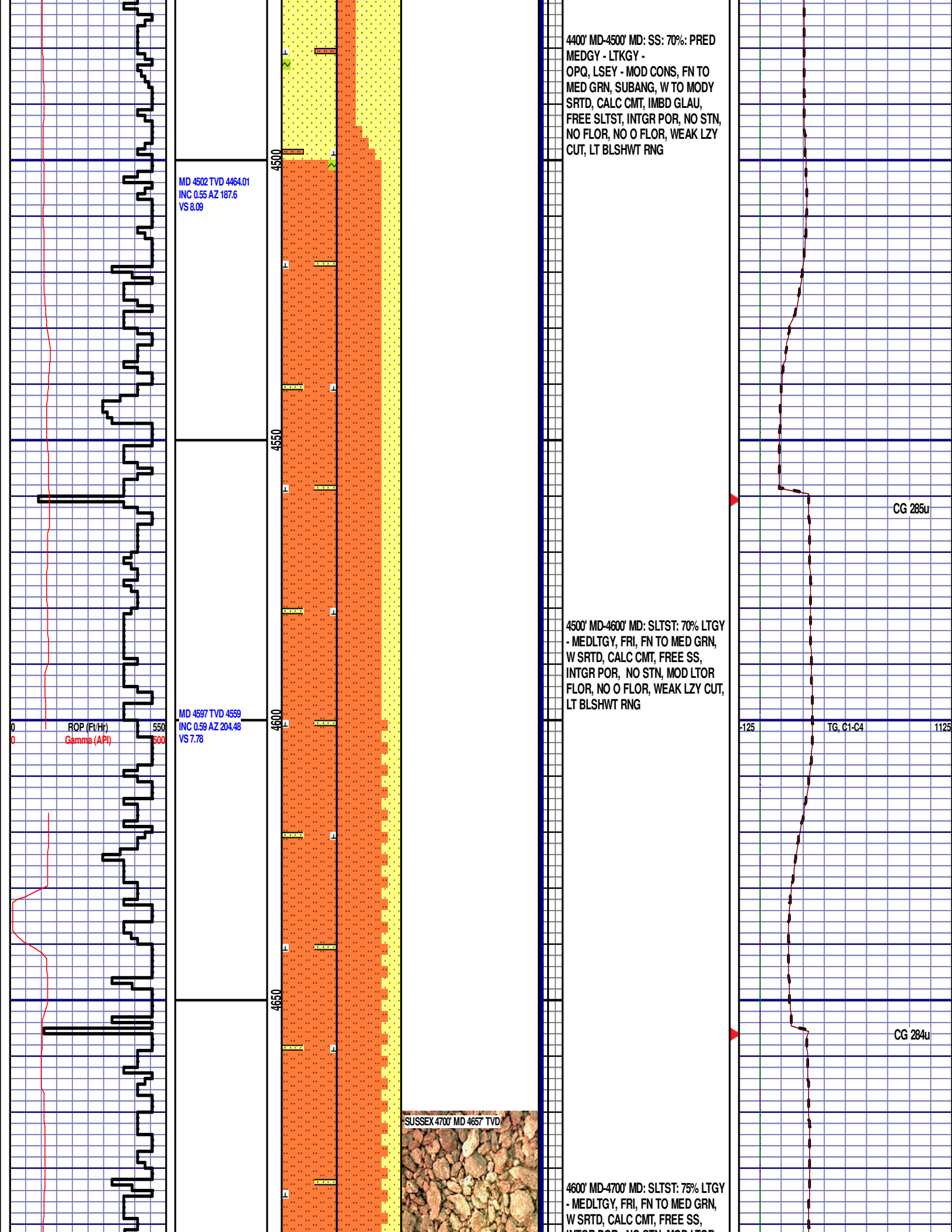
4100' MD-4200' MD: SLTST: 60% LTGY
- MEDLTGY, FRI, FN TO MED GRN,
W SRTD, CALC CMT, IMBD GLAU,
SANDY, INTGR POR, NO STN, MOD
LTOR FLOR, NO O FLOR, WEAK
LZY CUT, LT BLSHWT RING

CG 251u

CG 202u

TG, C1-C4

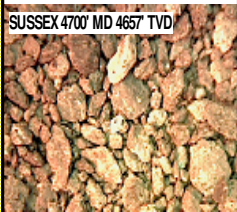




4400' MD-4500' MD: SS: 70%: PRED
MEDGY - LTKGY -
OPQ, LSEY - MOD CONS, FN TO
MED GRN, SUBANG, W TO MODY
SRTD, CALC CMT, IMBD GLAU,
FREE SLTST, INTGR POR, NO STN,
NO FLOR, NO O FLOR, WEAK LZY
CUT, LT BLSHWT RING

4500' MD-4600' MD: SLTST: 70% LTGY
- MEDLTGY, FRI, FN TO MED GRN,
W SRTD, CALC CMT, FREE SS,
INTGR POR, NO STN, MOD LTOR
FLOR, NO O FLOR, WEAK LZY CUT,
LT BLSHWT RING

4600' MD-4700' MD: SLTST: 75% LTGY
- MEDLTGY, FRI, FN TO MED GRN,
W SRTD, CALC CMT, FREE SS,
INTGR POR, NO STN, MOD LTOR
FLOR, NO O FLOR, WEAK LZY CUT,
LT BLSHWT RING



CG 285u

TG, C1-C4

CG 284u

MD 4692 TVD 4654
INC 0.83 AZ 206.45
VS 7.21

MD 4787 TVD 4748.98
INC 1.17 AZ 201.93
VS 6.47

MD 4881 TVD 4842.97
INC 0.71 AZ 227.06
VS 5.61

INTGR POR, NO STN, MOD LTOR
FLOR, NO O FLOR, WEAK LZ Y CUT,
LT BLSHWT RNG

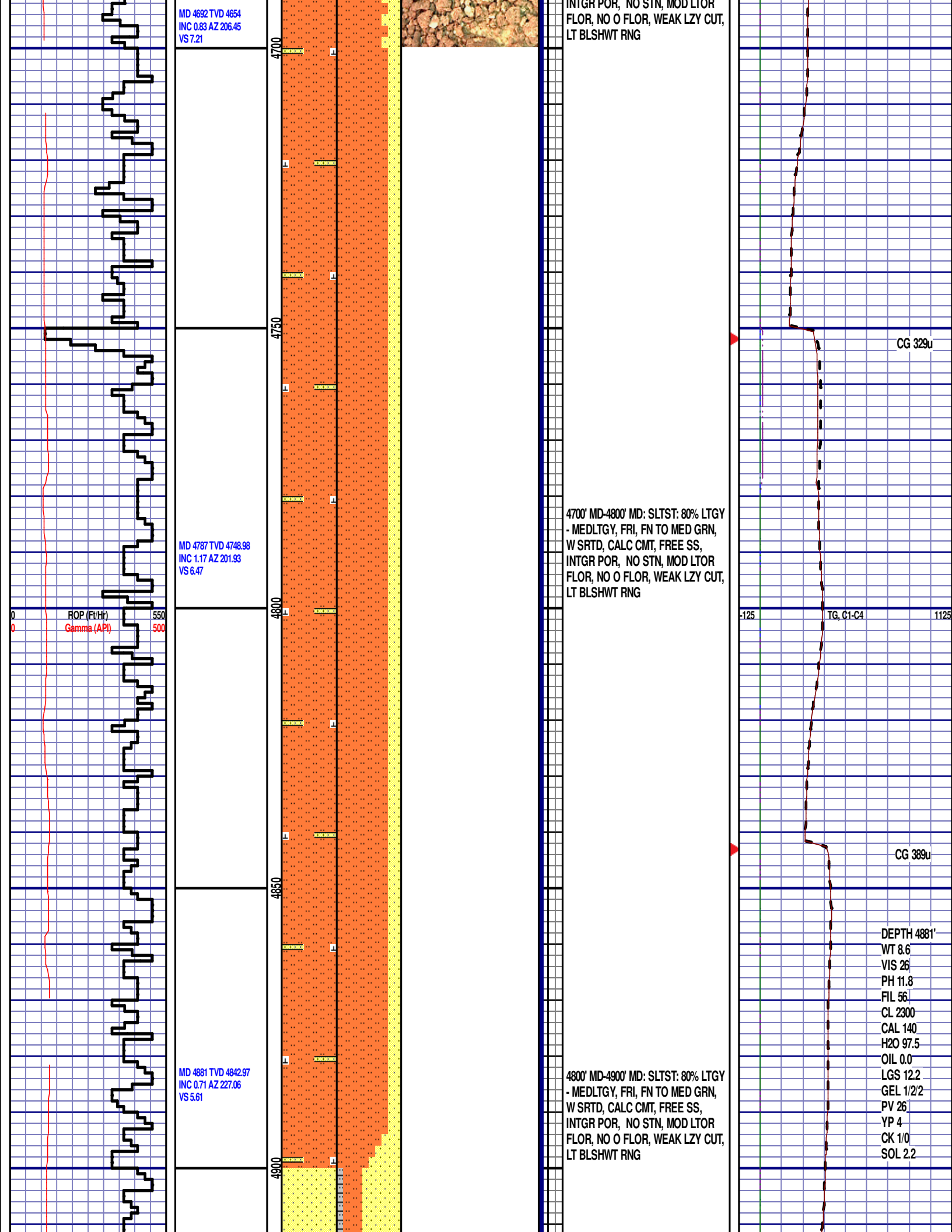
4700' MD-4800' MD: SLTST: 80% LTGY
- MEDLTGY, FRI, FN TO MED GRN,
W SRTD, CALC CMT, FREE SS,
INTGR POR, NO STN, MOD LTOR
FLOR, NO O FLOR, WEAK LZ Y CUT,
LT BLSHWT RNG

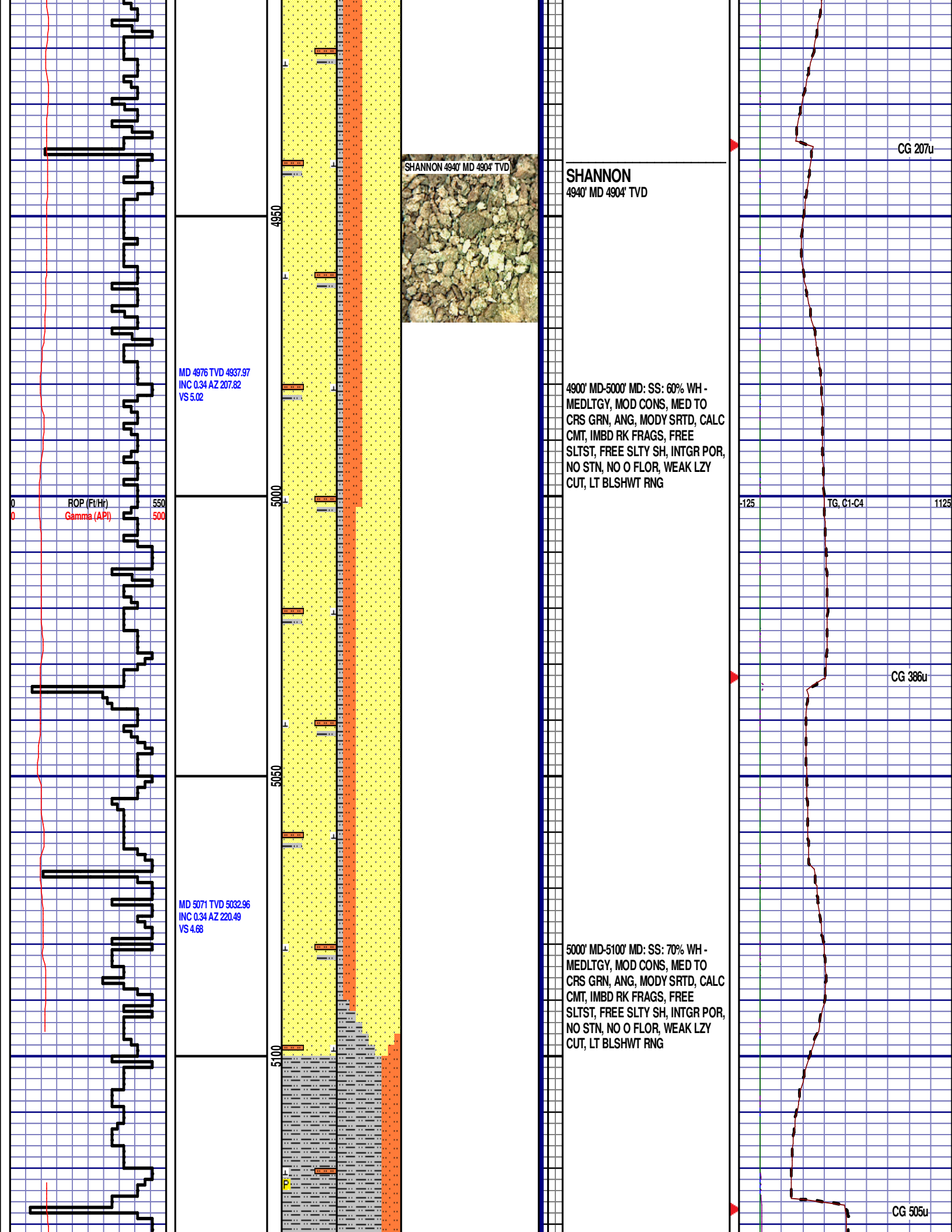
4800' MD-4900' MD: SLTST: 80% LTGY
- MEDLTGY, FRI, FN TO MED GRN,
W SRTD, CALC CMT, FREE SS,
INTGR POR, NO STN, MOD LTOR
FLOR, NO O FLOR, WEAK LZ Y CUT,
LT BLSHWT RNG

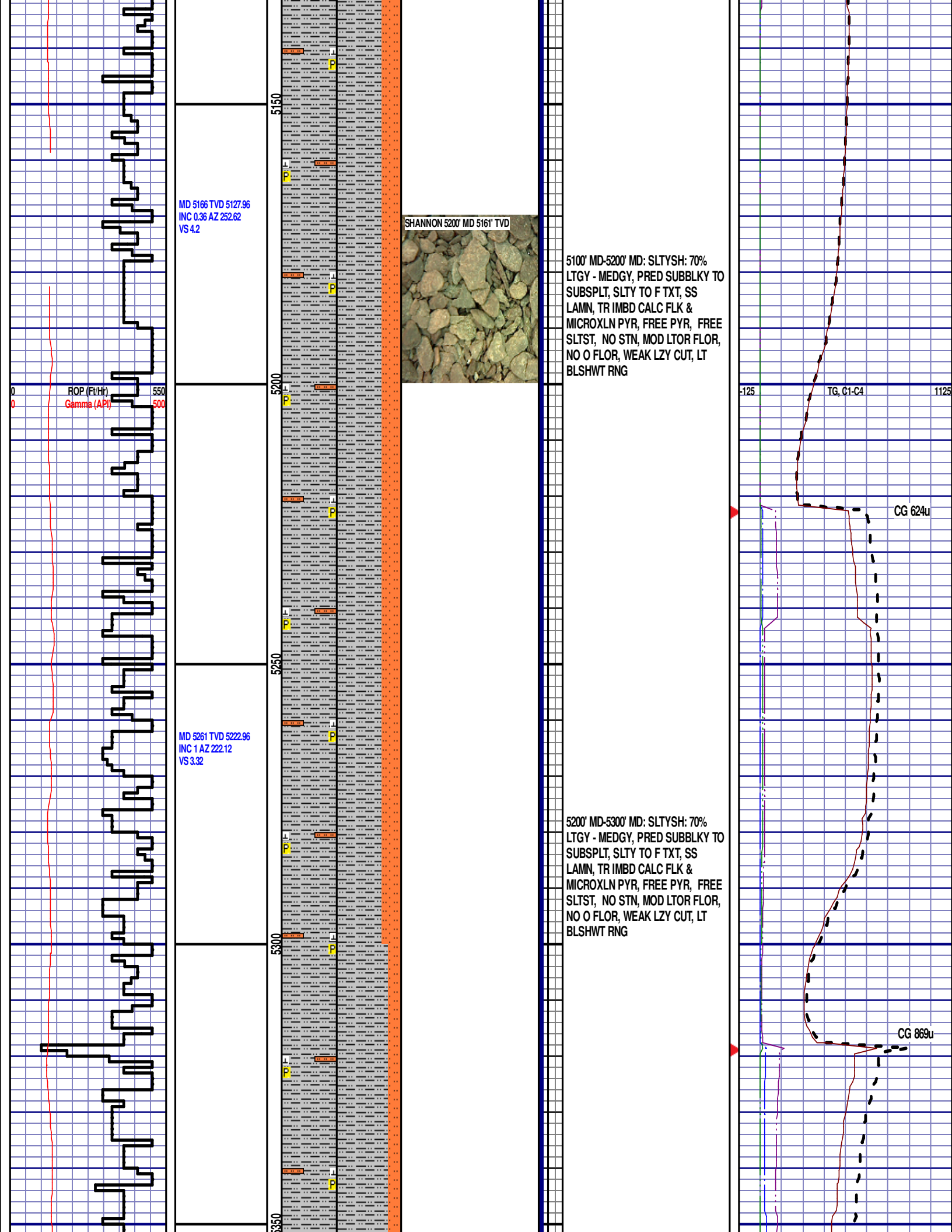
CG 329u

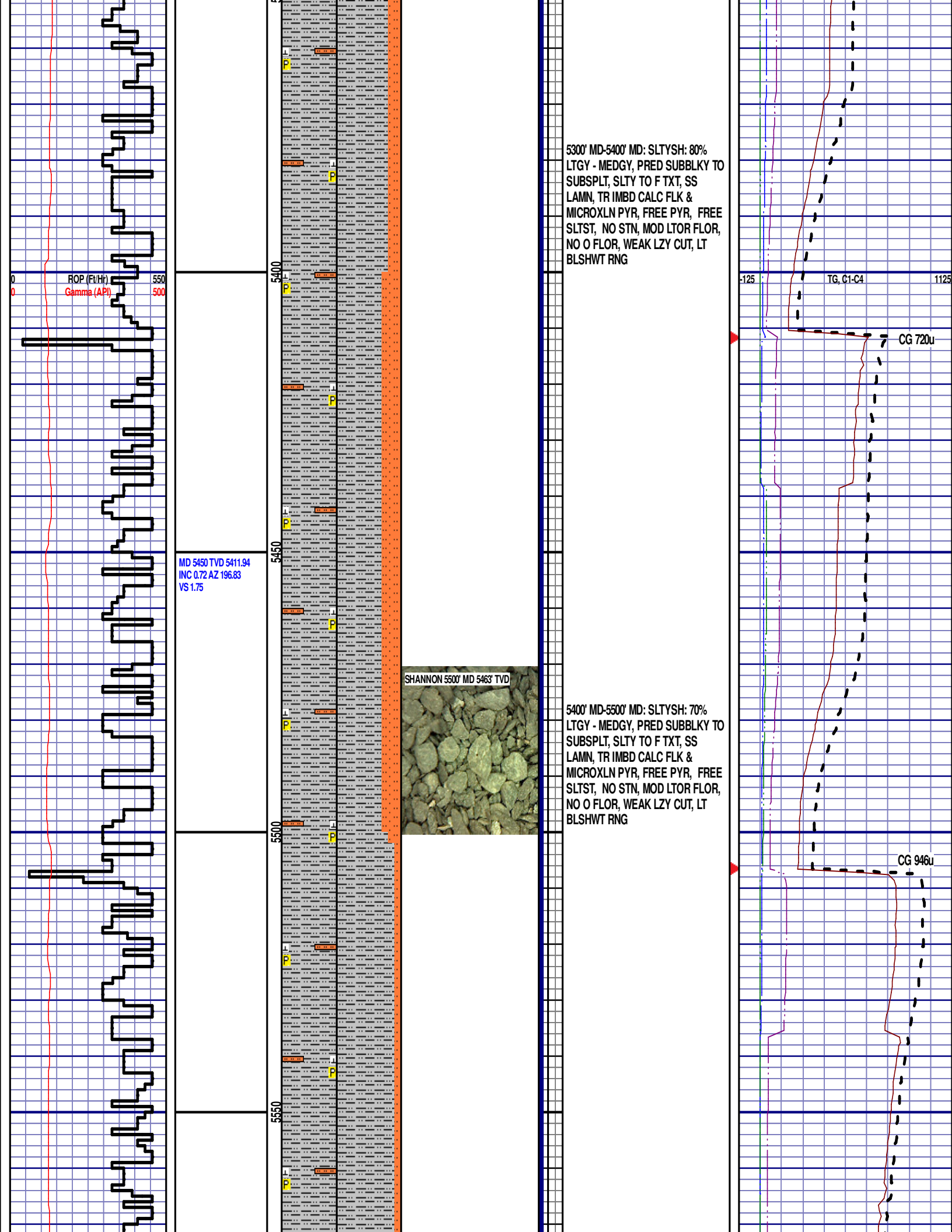
CG 389u

DEPTH 4881'
WT 8.6
VIS 26
PH 11.8
FIL 56
CL 2300
CAL 140
H2O 97.5
OIL 0.0
LGS 12.2
GEL 1/2/2
PV 26
YP 4
CK 1/0
SOL 2.2









WOB 18.7K
PP 3960
RPM 80
SPM 67/67

ROP (Ft/Hr)
Gamma (API)

MD 5640 TVD 5601.93
INC 0.26 AZ 137.28
VS 1.62

MD 5735 TVD 5696.93
INC 0.19 AZ 243.4
VS 1.61

5500' MD-5600' MD: SLTYSH: 90%
LTGY - MEDGY, PRED SUBBLKY TO
SUBSPLT, SLTY TO F TXT, SS
LAMN, TR IMBD CALC FLK &
MICROXLN PYR, FREE PYR, FREE
SLTST, NO STN, MOD LTOR FLOR,
NO O FLOR, WEAK LZV CUT, LT
BLSHWT RING

5600' MD-5700' MD: SLTYSH: 90%
LTGY - MEDGY, PRED SUBBLKY TO
SUBSPLT, SLTY TO F TXT, SS
LAMN, TR IMBD CALC FLK &
MICROXLN PYR, FREE PYR, FREE
SLTST, NO STN, MOD LTOR FLOR,
NO O FLOR, WEAK LZV CUT, LT
BLSHWT RING

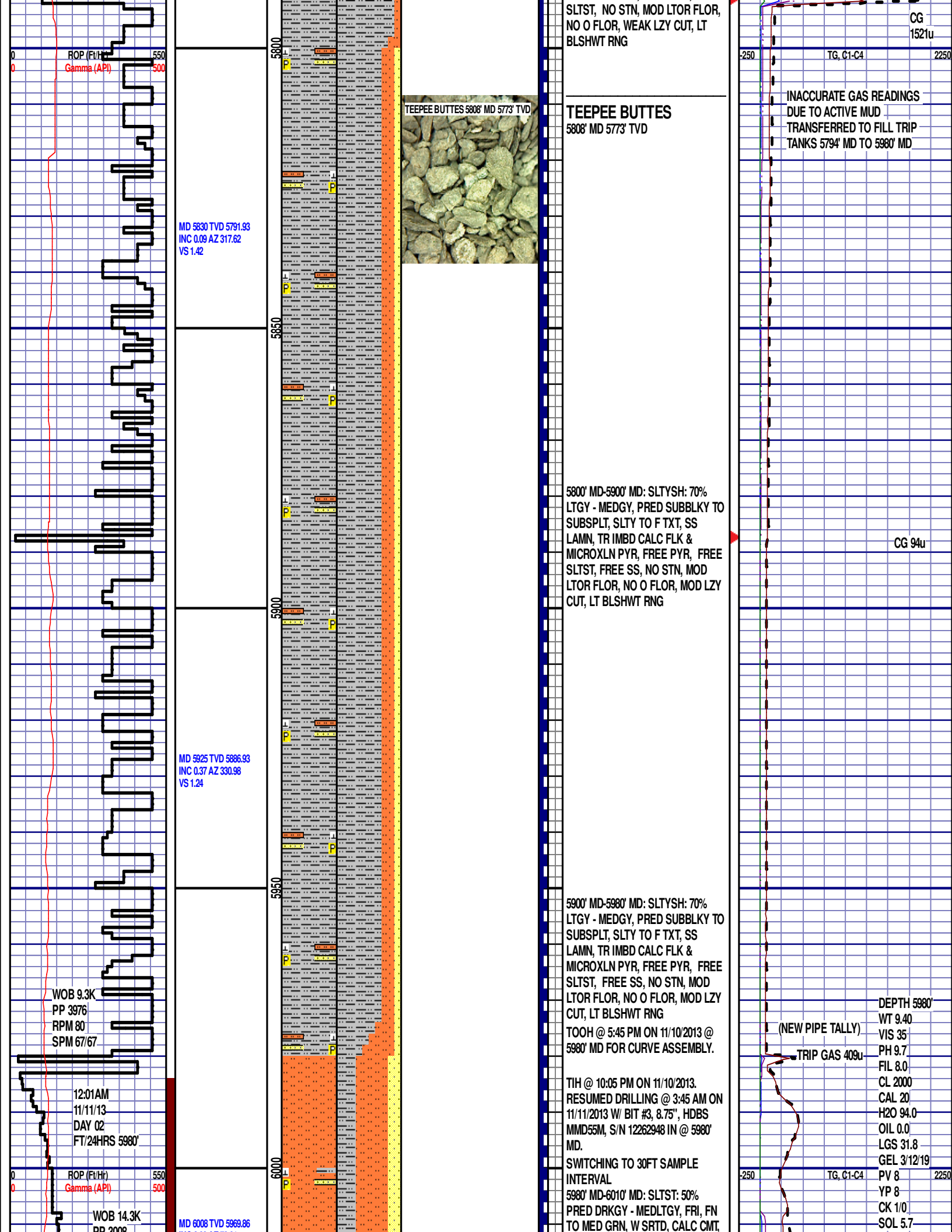
5700' MD-5800' MD: SLTYSH: 90%
LTGY - MEDGY, PRED SUBBLKY TO
SUBSPLT, SLTY TO F TXT, SS
LAMN, TR IMBD CALC FLK &
MICROXLN PYR, FREE PYR, FREE

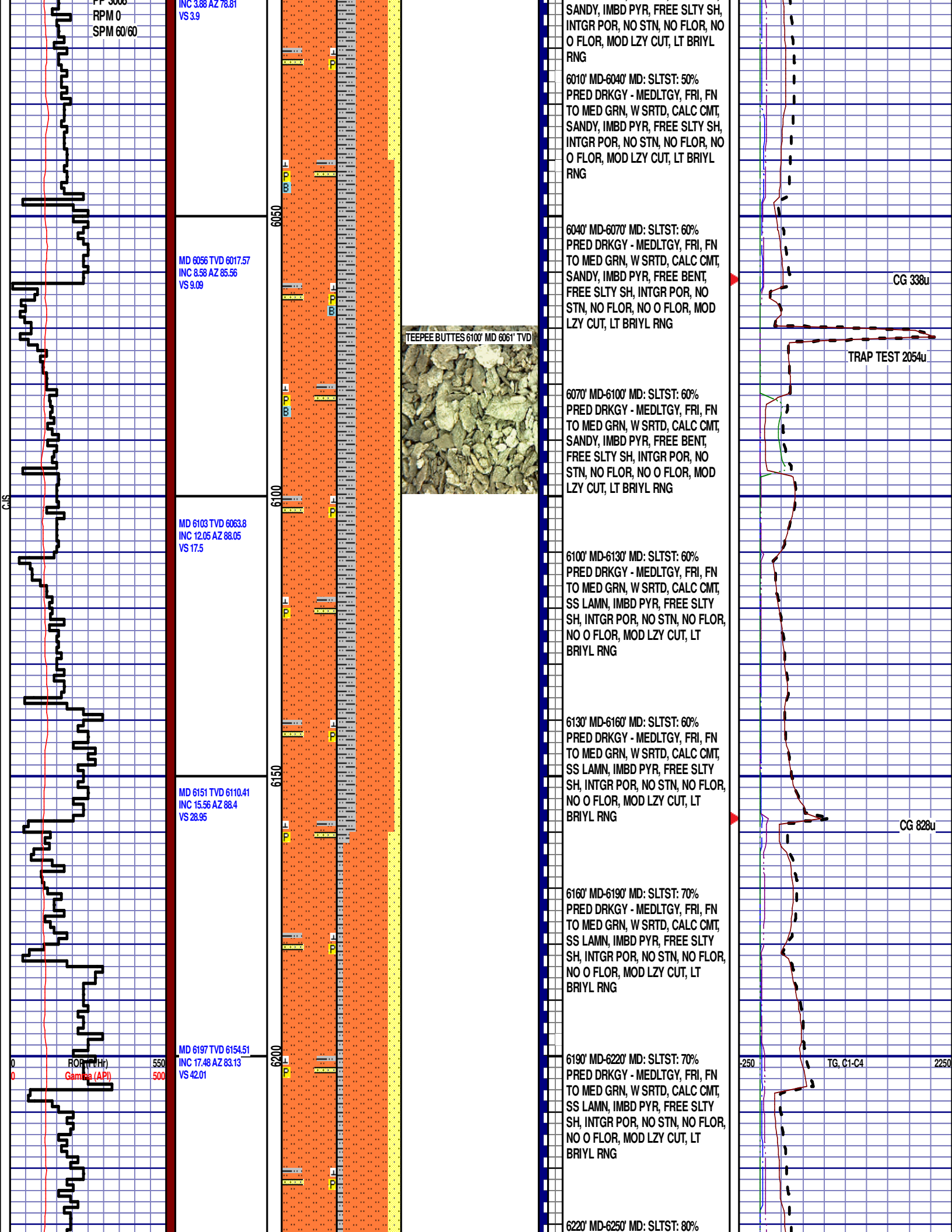
CG 676u

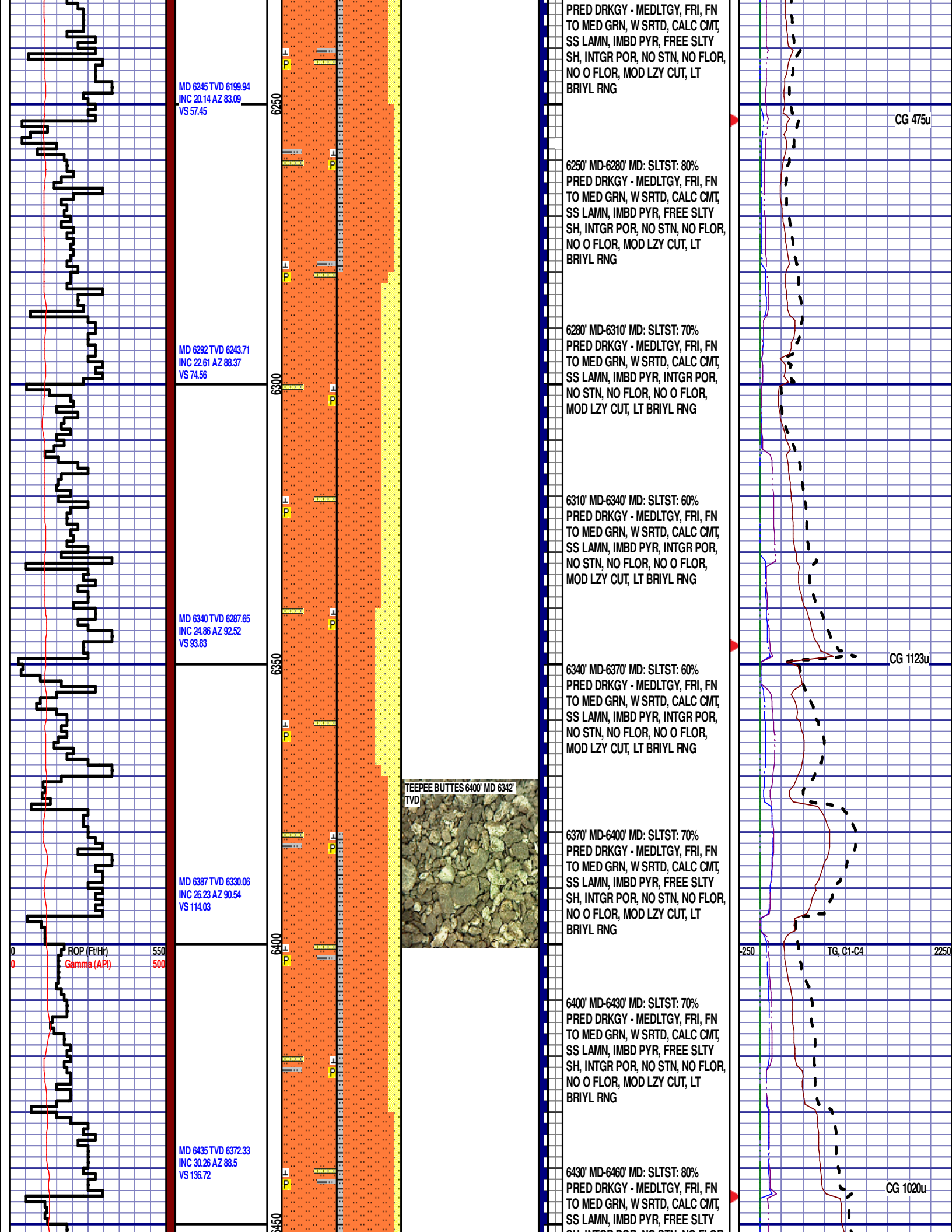
Scale Change
TG, C1-C4

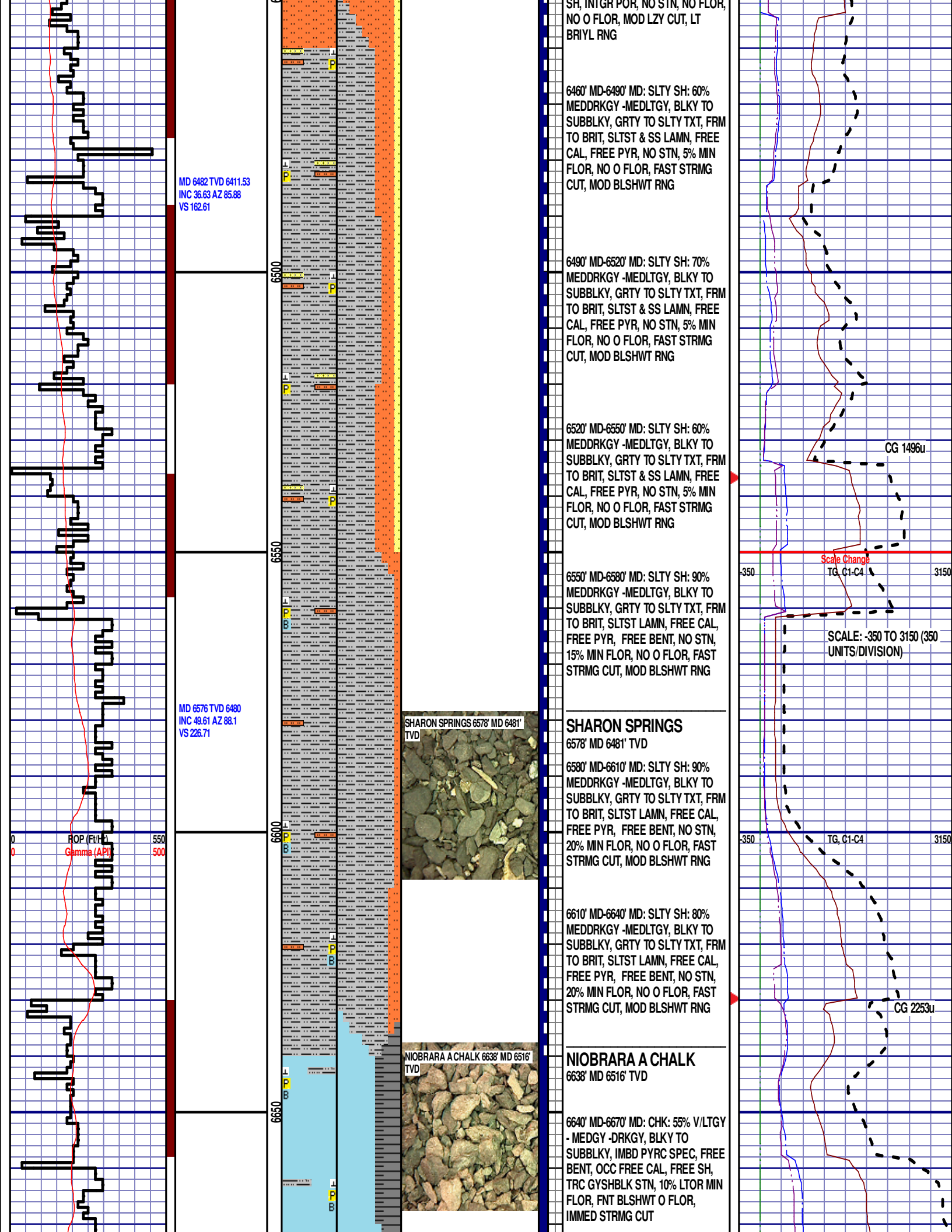
SCALE CHANGE: -250
TO 2250
(250 UNITS/DIVISION)

CG 1193u









MD 6671 TVD 6536.52
INC 57.31 AZ 88.47
VS 8.11

MD 6719 TVD 6562.34
INC 57.62 AZ 87.88
VS 1.22

WOB 13K
PP 2508
RPM 0
SPM 65/65

MD 6766 TVD 6587.38
INC 58 AZ 87.5
VS 1.06

ROP (Ft/Hr)
Gamma (API)

550
500

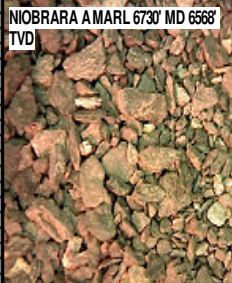
6700

6750

6800

50

NIOBRARA A MARL 6730' MD 6568'
TVD



6670' MD-6700' MD: CHK: 70% V/LTGY
- MEDGY -DRKGY, BLKY TO
SUBBLKY, IMBD PYRC SPEC, OCC
FREE CAL, FREE SH, TRC
GYSHBLK STN, 5% LTOR MIN
FLOR, FNT BLSHWT O FLOR,
IMMED STRMG CUT

6700' MD-6730' MD: MRL: 45%
MEDDRKGY - DRKGY,
BLKY TO SUBBLKY, FXLN TO
CHLKY, SFT, CHK FRMWRK, IMBD
CAL, FREE PYR, FREE BENT, NO
STN, 15% LTOR MIN FLOR, FNT
BLSHWT O FLOR, IMMED STRMG
CUT

NIOBRARA A MARL

6730' MD 6568' TVD

6730' MD-6760' MD: MRL: 45% MEDDRKGY -
DRKGY,
BLKY TO SUBBLKY, FXLN TO CHLKY, SFT,
CHK FRMWRK, IMBD CAL, FREE PYR, FREE
BENT, NO STN, 15% LTOR MIN FLOR, FNT
BLSHWT O FLOR, IMMED STRMG CUT

6760' MD-6790' MD: MRL: 45%
MEDDRKGY - DRKGY, BLKY TO
SUBBLKY, FXLN TO CHLKY, SFT,
CHK FRMWRK, IMBD CAL, FREE
PYR, FREE BENT, NO STN, 15%
LTOR MIN FLOR, FNT BLSHWT O
FLOR, IMMED STRMG CUT

END OF VERTICAL LOG @ 6800' MD
ON 11/11/2013, CONTINUED ON
HORIZONTAL LOG

CG 3014u

350

TG, C1-C4

3150