

<<< Fold Here >>>

All interpretations are opinions based on inferences from electrical or other measurements and we cannot and do not guarantee the accuracy or correctness of any interpretation, and we shall not, except in the case of gross or willful negligence on our part, be liable or responsible for any loss, costs, damages, or expenses incurred or sustained by anyone resulting from any interpretation made by any of our officers, agents or employees. These interpretations are also subject to our general terms and conditions set out in our current Price Schedule.

## Log Correlated to 24' Drilling Rig KB

Main Pass and Repeat Pass logged with zero Pressure on surface

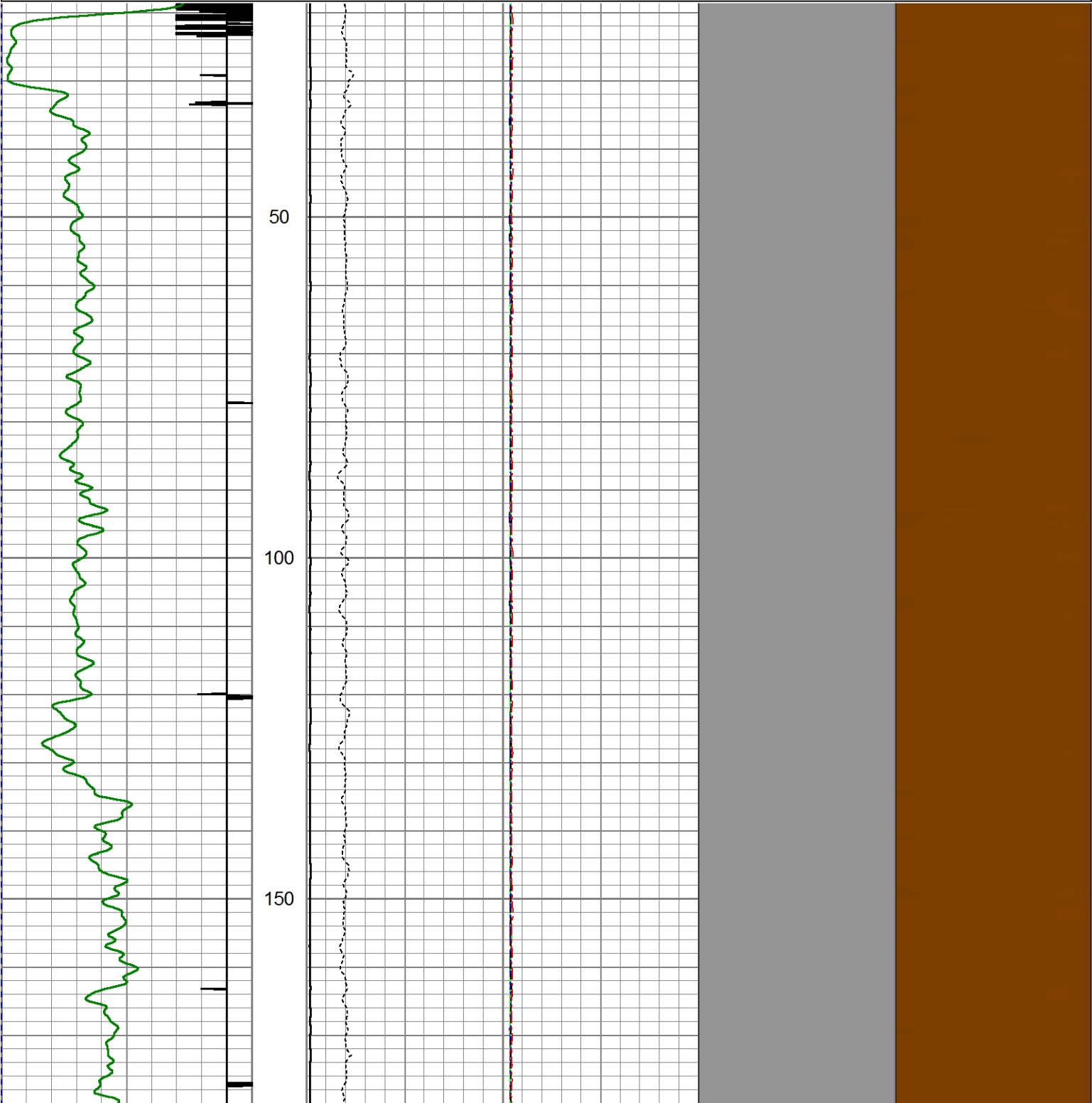
Short Joint @ 5790' - 5806'

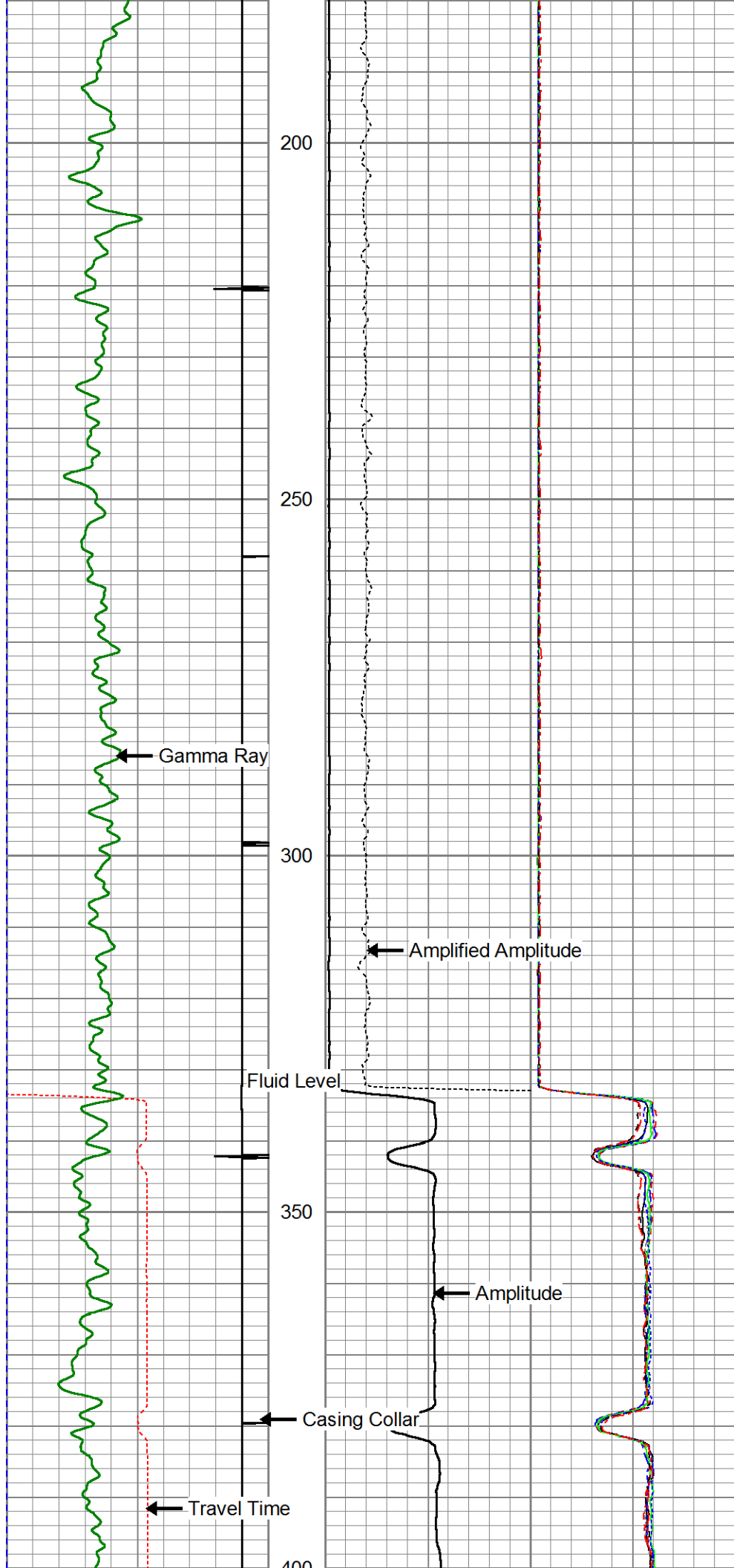
Thank You for using Allied Wireline

(303)659-4609



400	Travel Time (usec)	200	0	Amplitude (mV)	100	-5	AMPS1	150	Variable Density		1	Cement Map	8
9	Casing Collar	-1	Amplified Amplitude			-5	AMPS2	150	200	1200	0	100	
0	Gamma Ray (GAPI)	150	0	(mV)	10	-5	AMPS3	150					
Line Tension (lb)		5000				-5	AMPS4	150					
						-5	AMPS5	150					
						-5	AMPS6	150					
						-5	AMPS7	150					
						-5	AMPS8	150					





Variable Density

Cement Map

