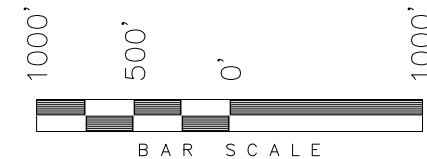


**T3N, R97W, 6th P.M.**

**ENDEAVOUR OPERATING CORPORATION**

WELL LOCATION, WILEY 23-3-97 H1,  
LOCATED AS SHOWN IN THE SW 1/4  
SE 1/4 OF SECTION 23, T3N, R97W, 6TH  
P.M. RIO BLANCO COUNTY, COLORADO.

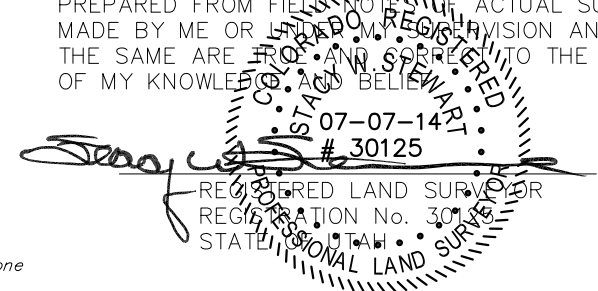


**NOTES:**

1. Well footages are measured at right angles to the Section Lines.
2. Bearings are based on Global Positioning Satellite observations.
3. G.P.S. Operator: K. Stewart, (PDOP) = 1.2
4. The Bottom of Hole Bears S18°47'08"W 5887.35' from the Top of Hole.



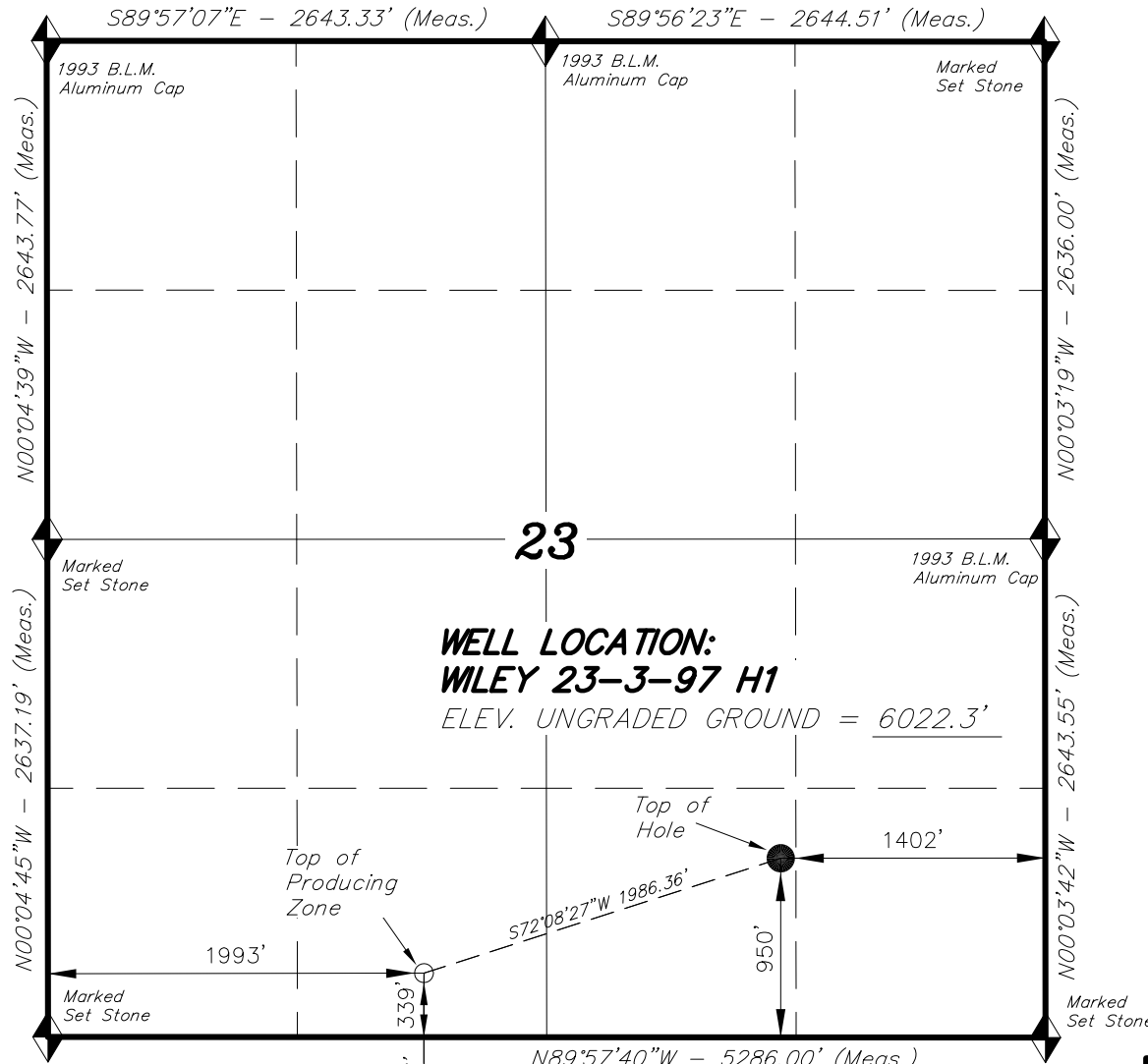
THIS IS TO CERTIFY THAT THE ABOVE PLAT WAS  
PREPARED FROM FIELD NOTES OF ACTUAL SURVEYS  
MADE BY ME OR UNDER MY SUPERVISION AND THAT  
THE SAME ARE TRUE AND CORRECT TO THE BEST  
OF MY KNOWLEDGE AND BELIEF.



**TRI STATE LAND SURVEYING & CONSULTING**

180 NORTH VERNAL AVE. — VERNAL, UTAH 84078  
(435) 781-2501

DATE SURVEYED: 12-18-12	SURVEYED BY: K.S.	SHEET  <b>1</b>
DATE DRAWN: 06-17-13	DRAWN BY: M.W.	
REVISED: 07-07-14 R.V.C.	SCALE: 1" = 1000'	



◆ = SECTION CORNERS  
LOCATED

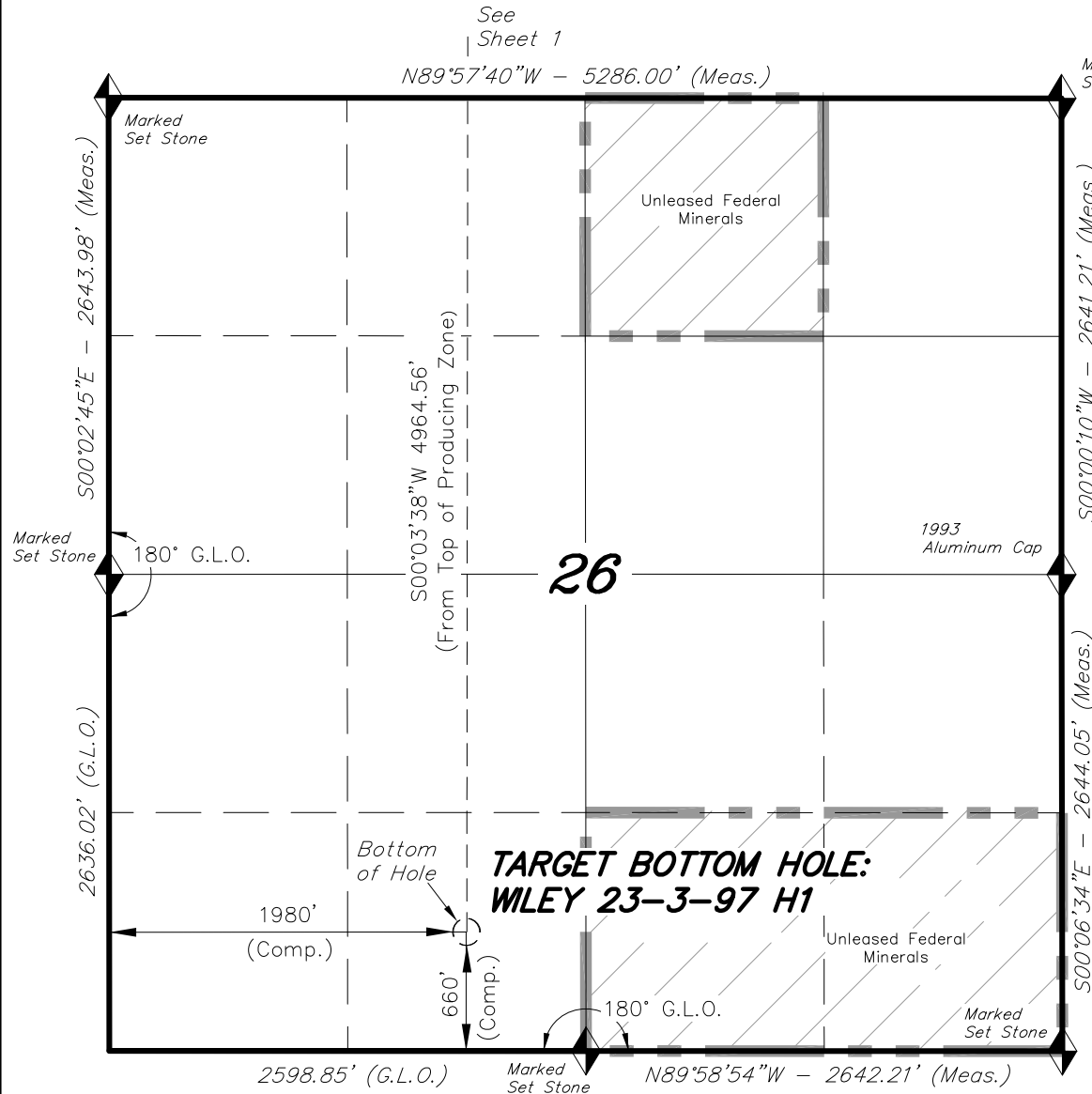
BASIS OF ELEV; U.S.G.S.  
7-1/2 min QUAD  
(Indian Valley)

S00°03'38"W — 4964.56'  
(To Bottom Hole)  
See  
Sheet 1a

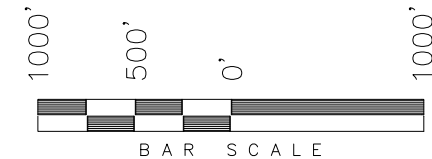
<b>NAD 83 (SURFACE LOCATION)</b>	
LATITUDE = 40°12'35.23" (40.209787°)	LONGITUDE = 108°14'27.89" (108.241080°)
<b>NAD 27 (SURFACE LOCATION)</b>	
LATITUDE = 40°12'35.34" (40.209817°)	LONGITUDE = 108°14'25.57" (108.240437°)
<b>NAD 83 (TOP OF PRODUCING ZONE)</b>	
LATITUDE = 40°12'29.23" (40.208119°)	LONGITUDE = 108°14'52.26" (108.247849°)
<b>NAD 27 (TOP OF PRODUCING ZONE)</b>	
LATITUDE = 40°12'29.34" (40.208149°)	LONGITUDE = 108°14'49.94" (108.247205°)

**T3N, R97W, 6th P.M.**

**ENDEAVOUR OPERATING CORPORATION**



TARGET BOTTOM HOLE, WILEY 23-3-97 H1, LOCATED AS SHOWN IN THE SE 1/4 SW 1/4 OF SECTION 26, T3N, R97W, 6TH P.M. RIO BLANCO COUNTY, COLORADO.

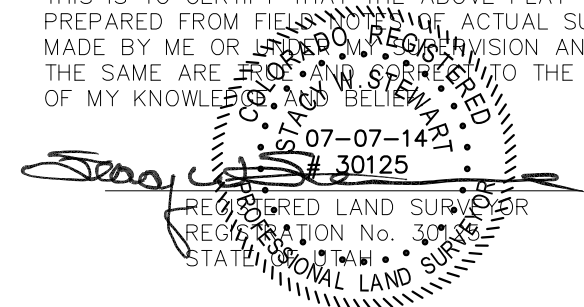


**NOTES:**

1. Well footages are measured at right angles to the Section Lines.
2. Bearings are based on Global Positioning Satellite observations.
3. The Bottom of Hole Bears S18°47'08"W 5887.35' from the Top of Hole.



THIS IS TO CERTIFY THAT THE ABOVE PLAT WAS PREPARED FROM FIELD NOTES OF ACTUAL SURVEYS MADE BY ME OR UNDER MY SUPERVISION AND THAT THE SAME ARE TRUE AND CORRECT TO THE BEST OF MY KNOWLEDGE AND BELIEF.



◆ = SECTION CORNERS LOCATED

BASIS OF ELEV; U.S.G.S.  
7-1/2 min QUAD (Indian Valley)

NAD 83 (BOTTOM HOLE LOCATION)	
LATITUDE	= 40°11'40.17" (40.194492°)
LONGITUDE	= 108°14'52.41" (108.247892°)
NAD 27 (BOTTOM HOLE LOCATION)	
LATITUDE	= 40°11'40.28" (40.194522°)
LONGITUDE	= 108°14'50.10" (108.247249°)

**TRI STATE LAND SURVEYING & CONSULTING**

180 NORTH VERNAL AVE. - VERNAL, UTAH 84078  
(435) 781-2501

DATE SURVEYED: 12-18-12	SURVEYED BY: K.S.	SHEET  <b>1a</b>
DATE DRAWN: 06-17-13	DRAWN BY: M.W.	
REVISED: 07-07-14 R.V.C.	SCALE: 1" = 1000'	