



RADIAL CEMENT BOND LOG GAMMA RAY CCL

Company KERR MCGEE OIL AND GAS ONSHORE
Well ELLIOT, KARL UNIT #1
Field WATTENBERG
County WELD
State COLORADO

Company KERR MCGEE OIL AND GAS ONSHORE
Well ELLIOT, KARL UNIT #1
Field WATTENBERG
County WELD State COLORADO

Location: API # : 05-123-08066
SHL 1,580'FNL 1,390' FEL
LAT: 40.22890 LONG:-104.92830
SEC 18 TWP 3N RGE 67W
Permanent Datum G.L. Elevation 4841
Log Measured From KB 10
Drilling Measured From K.B
Other Services
Elevation
K.B. 4851
D.F. 4850
G.L. 4841

Date	6/20/14
Run Number	ONE
Depth Driller	7745
Depth Logger	7440
Bottom Logged Interval	7440
Top Log Interval	SURFACE
Open Hole Size	7.88
Type Fluid	WATER
Density / Viscosity	1.0
Max. Recorded Temp.	221
Estimated Cement Top	6916
Time Well Ready	NA
Time Logger on Bottom	NA
Equipment Number	4740
Location	GREELEY, CO
Recorded By	C. SHARP
Witnessed By	L. WEBB

Borehole Record				Tubing Record			
Run Number	Bit	From	To	Size	Weight	From	To
ONE							
TWO							
THREE							
Casing Record		Size		Wgt/Ft	Top		Bottom
Surface String		8.63		20#	0		213
Prot. String							
Production String		4.5		10.5 & 11.6#	0		7750
Liner							1

<<< Fold Here >>>

All interpretations are opinions based on inferences from electrical or other measurements and we cannot and do not guarantee the accuracy or correctness of any interpretation, and we shall not, except in the case of gross or willful negligence on our part, be liable or responsible for any loss, costs, damages, or expenses incurred or sustained by anyone resulting from any interpretation made by any of our officers, agents or employees. These interpretations are also subject to our general terms and conditions set out in our current Price Schedule.



Comments

CORRELATED TO SCHLUMBERGER CBL

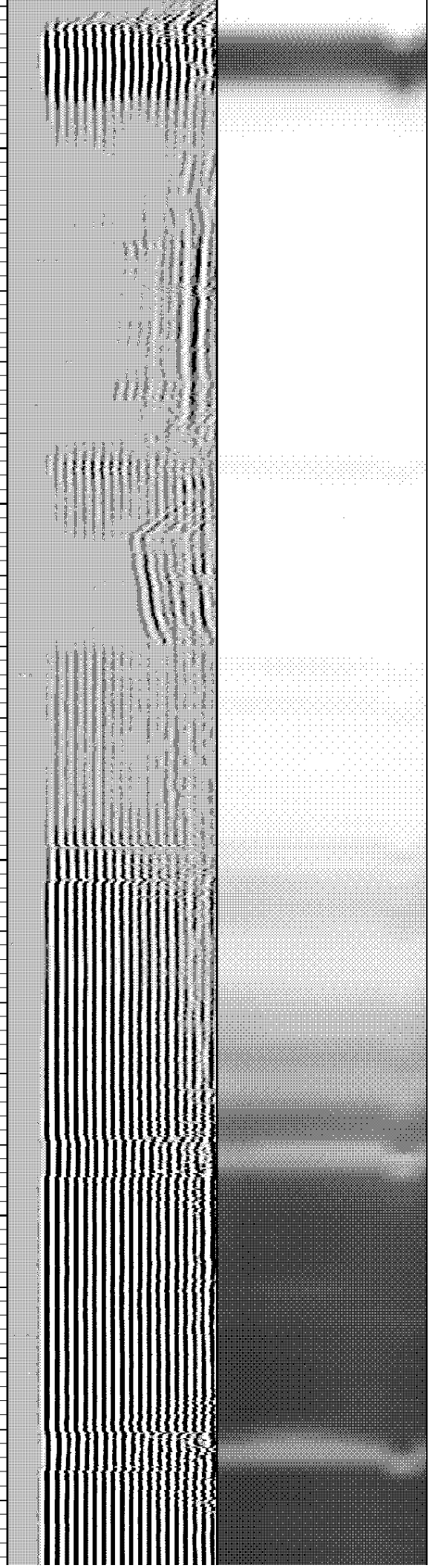
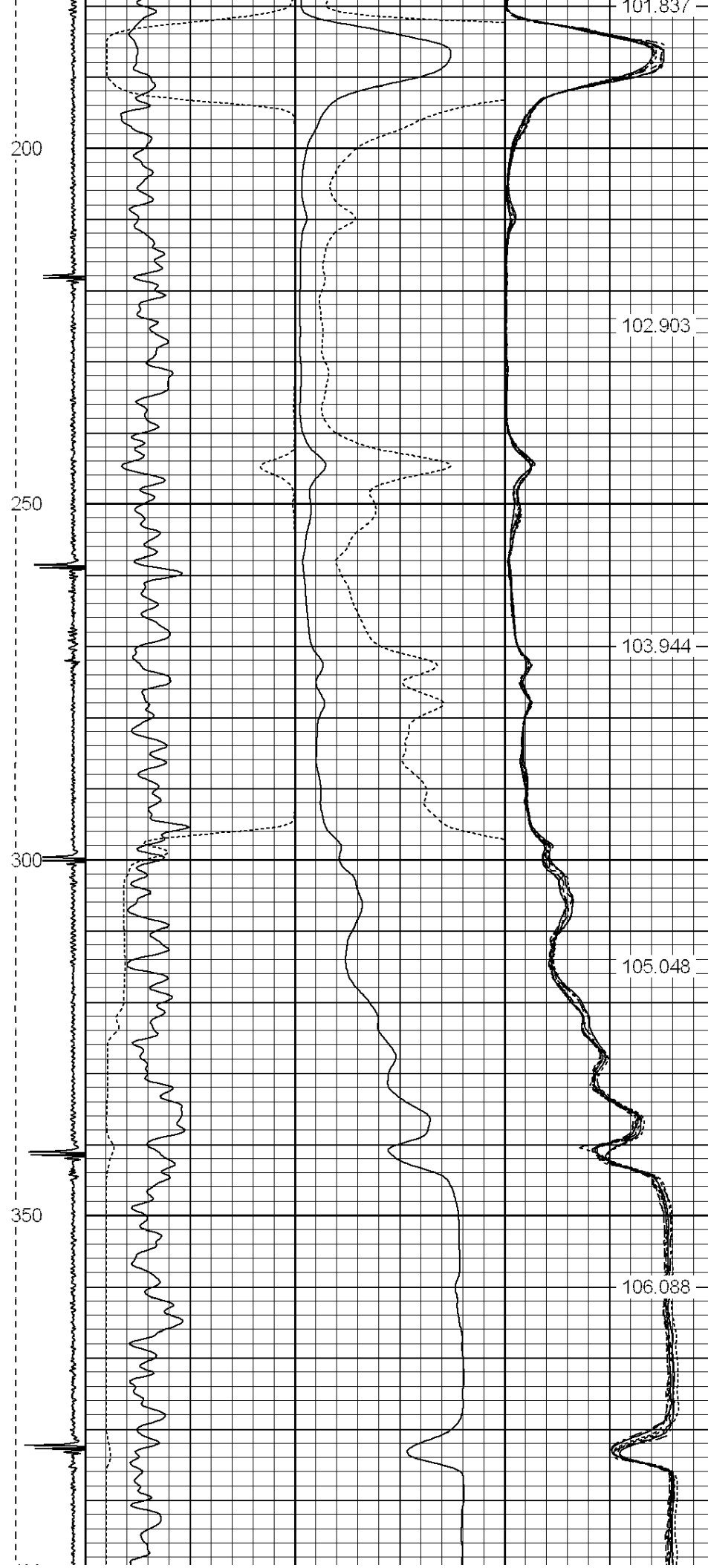
THANK YOU FOR USING WARRIOR ENERGY SERVICES!!!

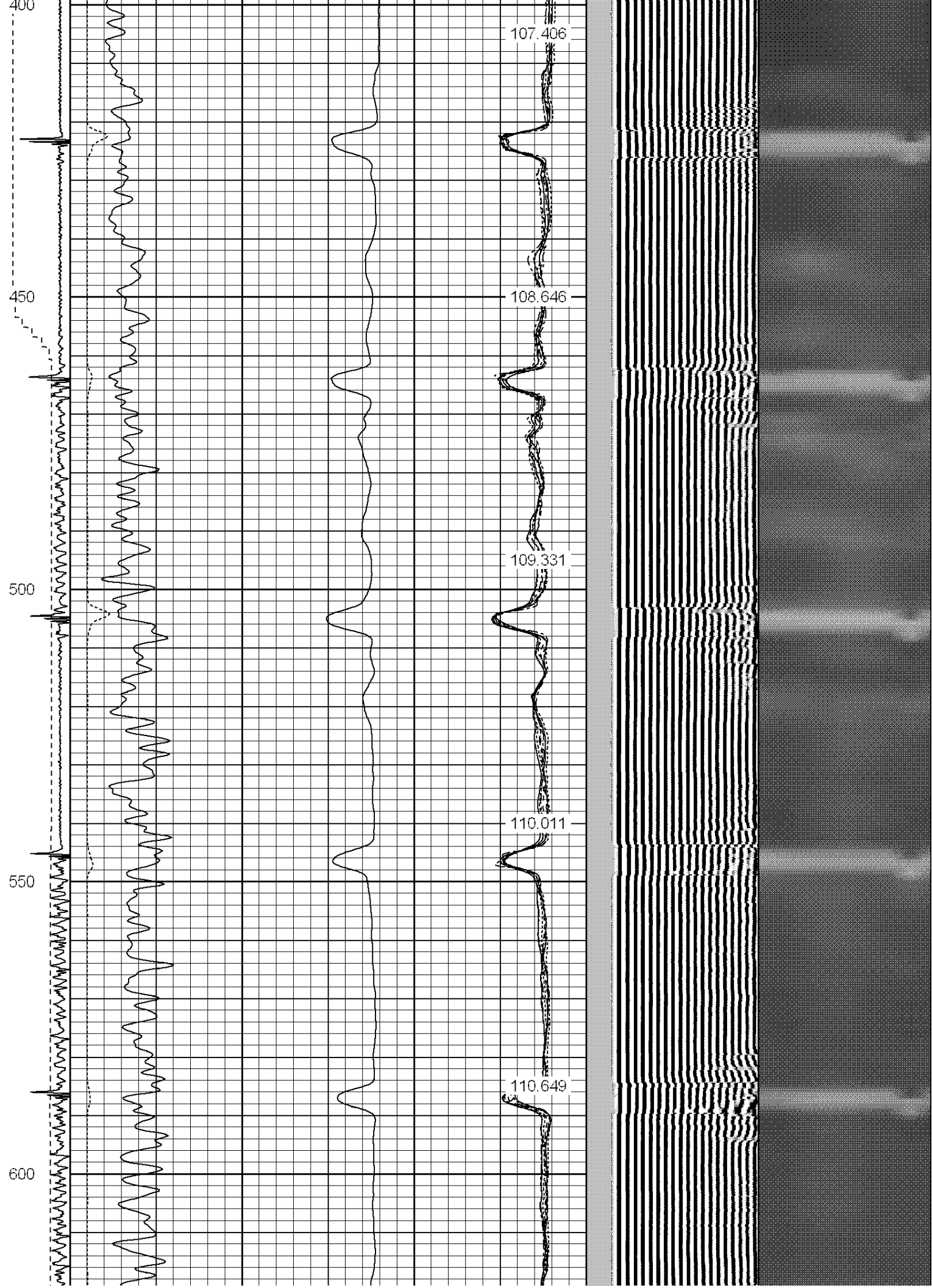
Sensor	Offset (ft)	Schematic	Description	Len (ft)	OD (in)	Wt (lb)

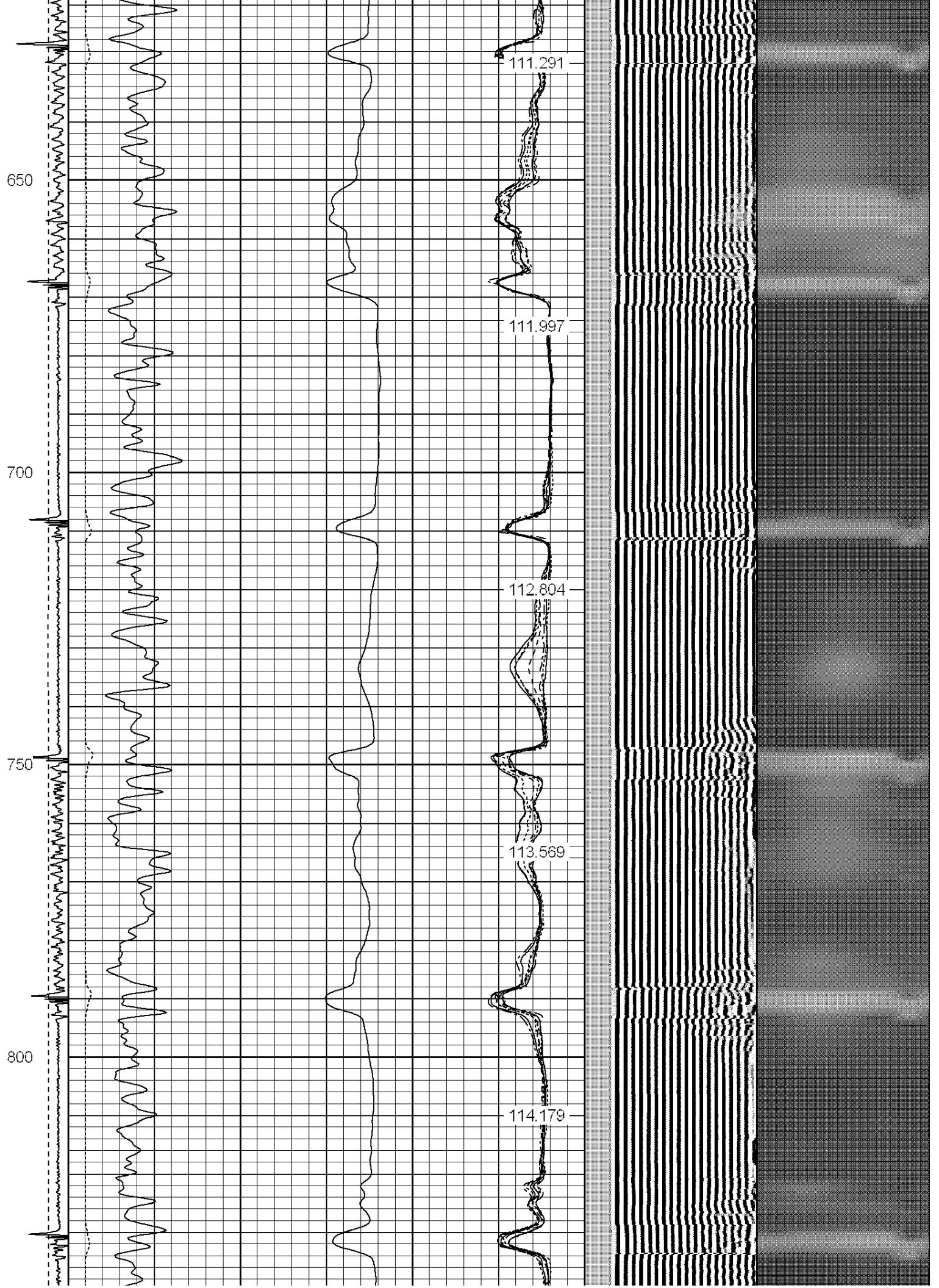
Tool Joint	Tool Joint Length (ft)	Tool Joint Weight (lb)	Tool Joint O.D. (in)	Tool Joint Description	Tool Joint Length (ft)	Tool Joint Weight (lb)	Tool Joint O.D. (in)
HEADVOLT	16.25						
IntTemp	14.83						
WVFS3FT	11.58						
WVFCAL	11.58						
WVFS1	11.58						
WVFS2	11.58						
WVFS3	11.58						
WVFS4	11.58						
WVFS5	11.58						
WVFS6	11.58						
WVFS7	11.58						
WVFS8	11.58						
WVFS5FT	10.58						
CNLSC	6.00						
CNSSC	5.17						
CCL	3.64						
GR	0.90						
Dataset: elliot karl unit #1.db: field/well/run1/pass6 Total Length: 19.08 ft Total Weight: 160.00 lb O.D.: 2.75 in							

-9	CCL	1	200	TT (usec)	800	0	AMP (mV)	100	0	AMPS1	100	200	VDL	1200	1	Cement Map	8
LSPD (ft/min)			0	GR (GAPI)	200	0		AMPx5 (mV)	20	0	AMPS2	100			1		
			200	GR (GAPI)	400			0	AMPS4	100							
0	250									0	AMPS5	100					
-----		0								AMPS6	100						
		0								AMPS7	100						
		0								AMPS8	100						
										IntTemp (degF)							









850

900

950

1000

1050

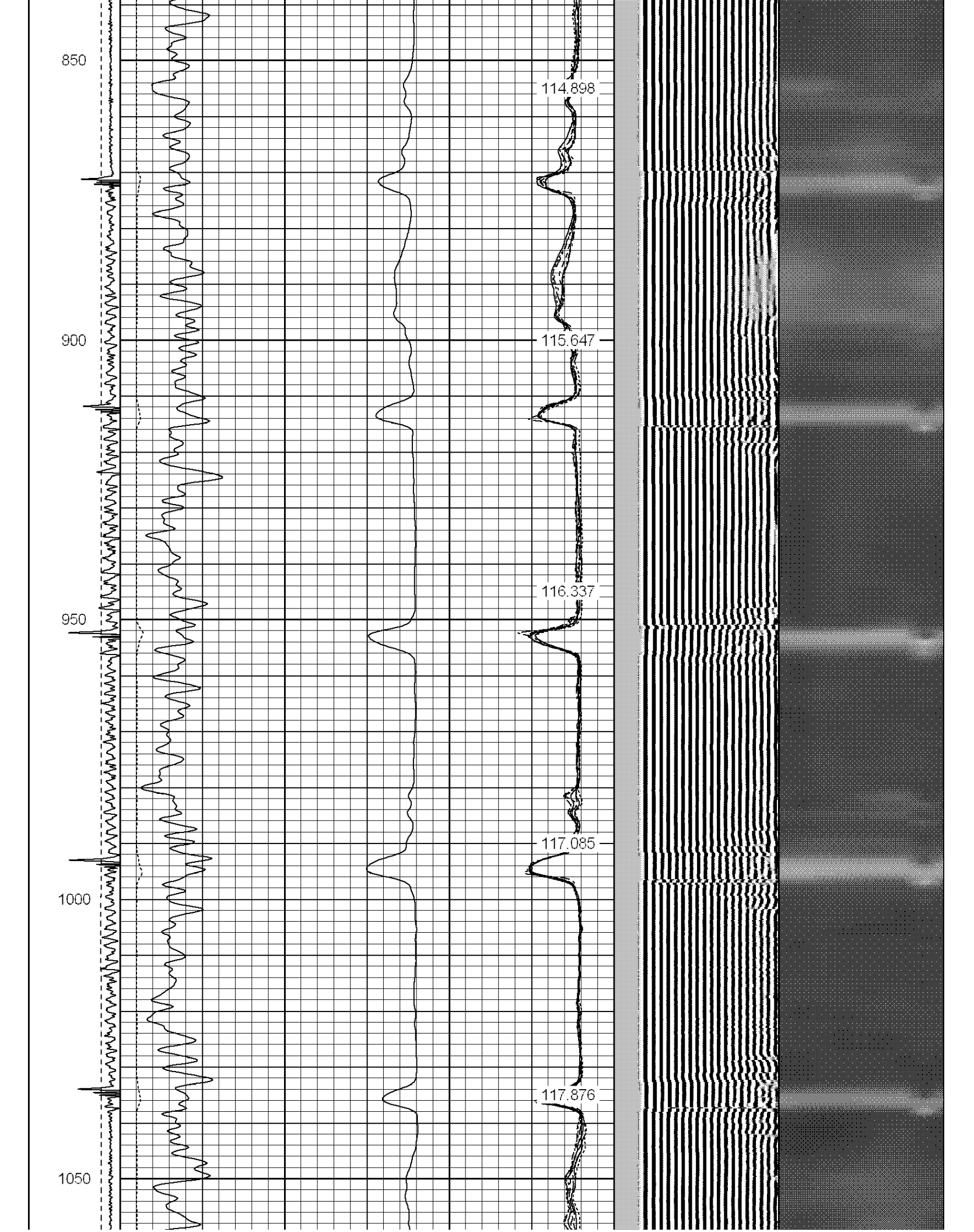
114.898

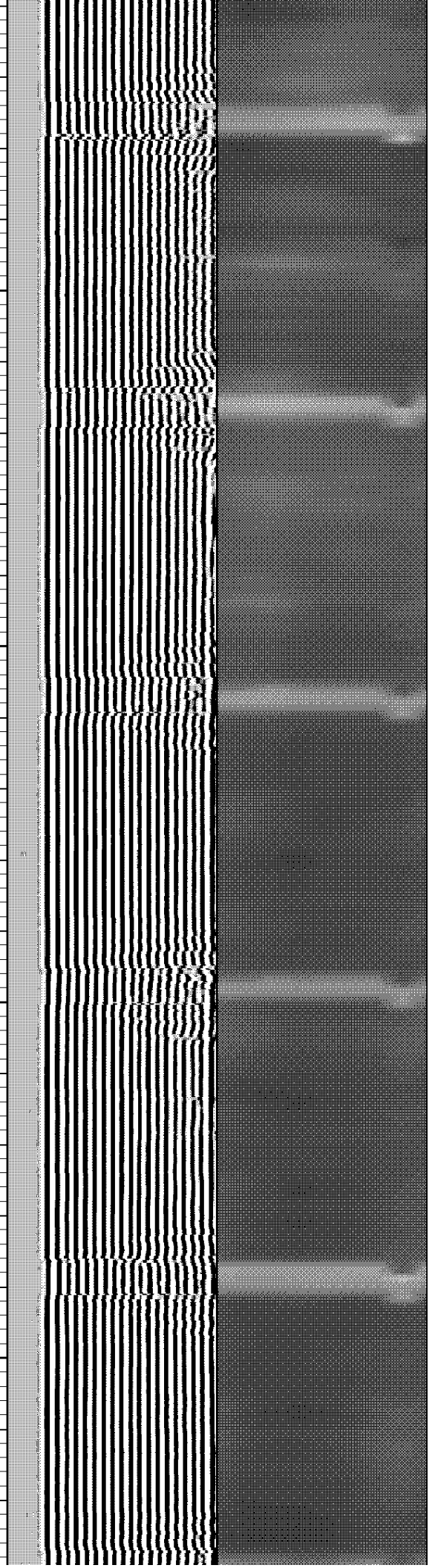
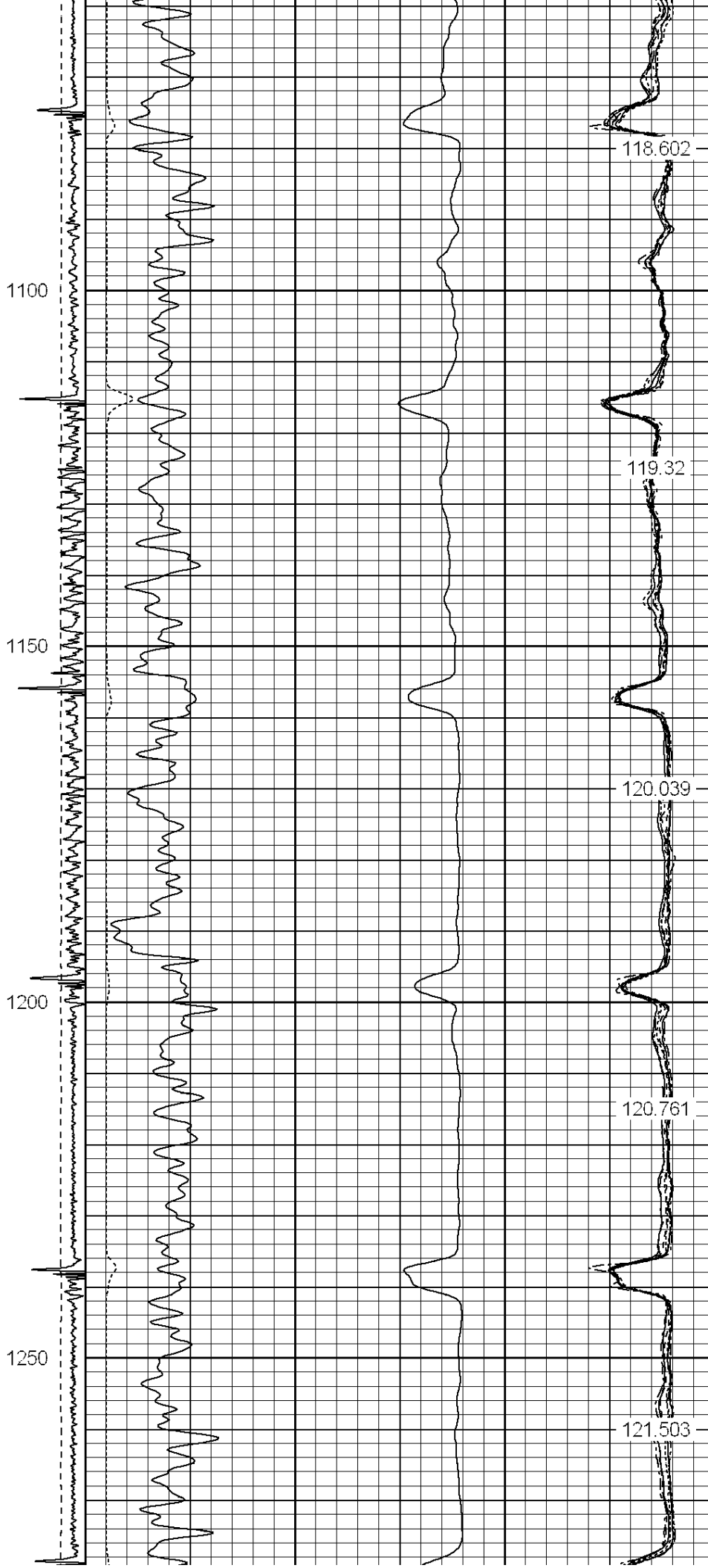
115.647

116.337

117.085

117.876





1300

1350

1400

1450

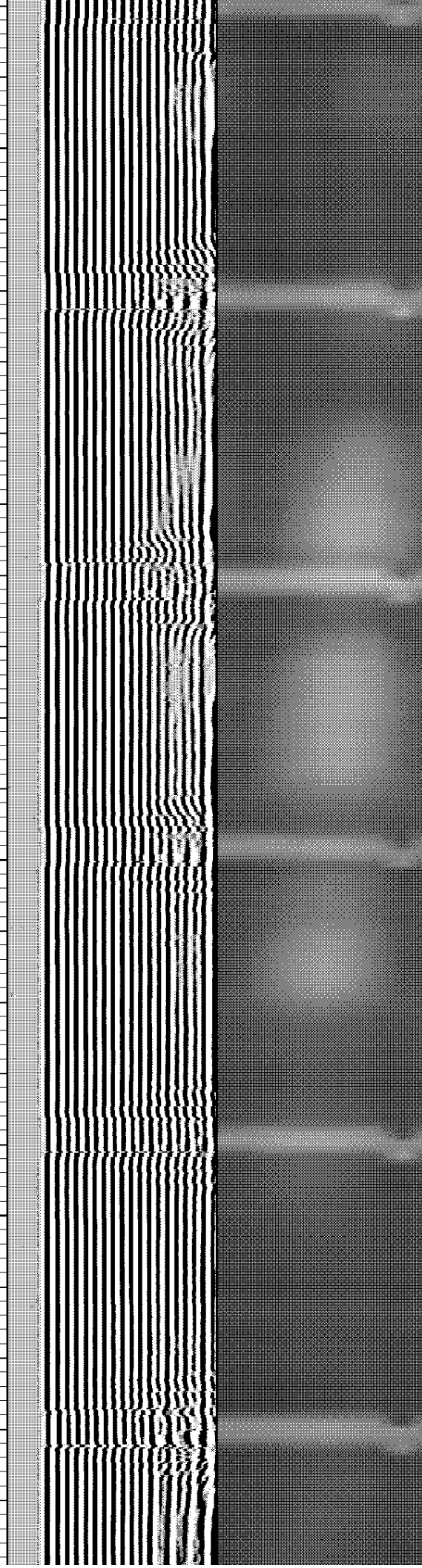
122.254

123.061

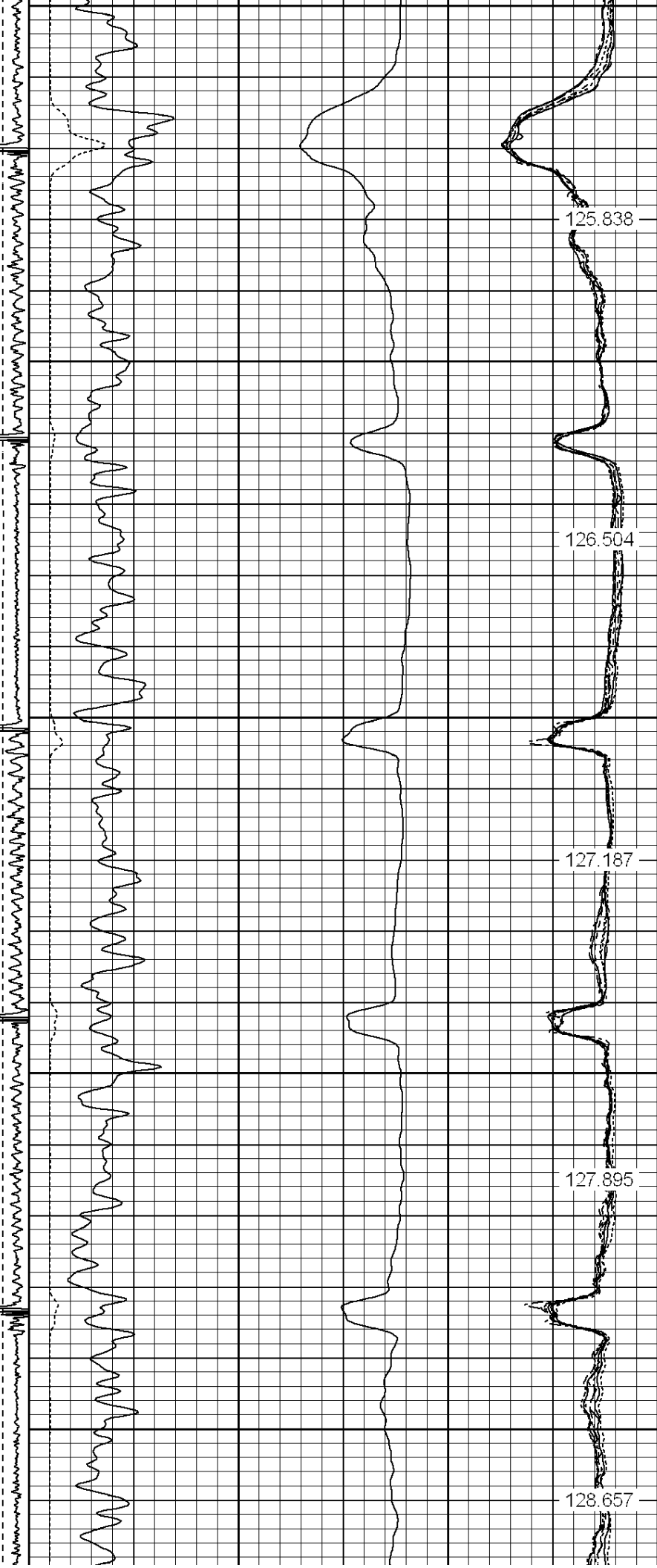
123.678

124.406

125.149



1500
1550
1600
1650
1700



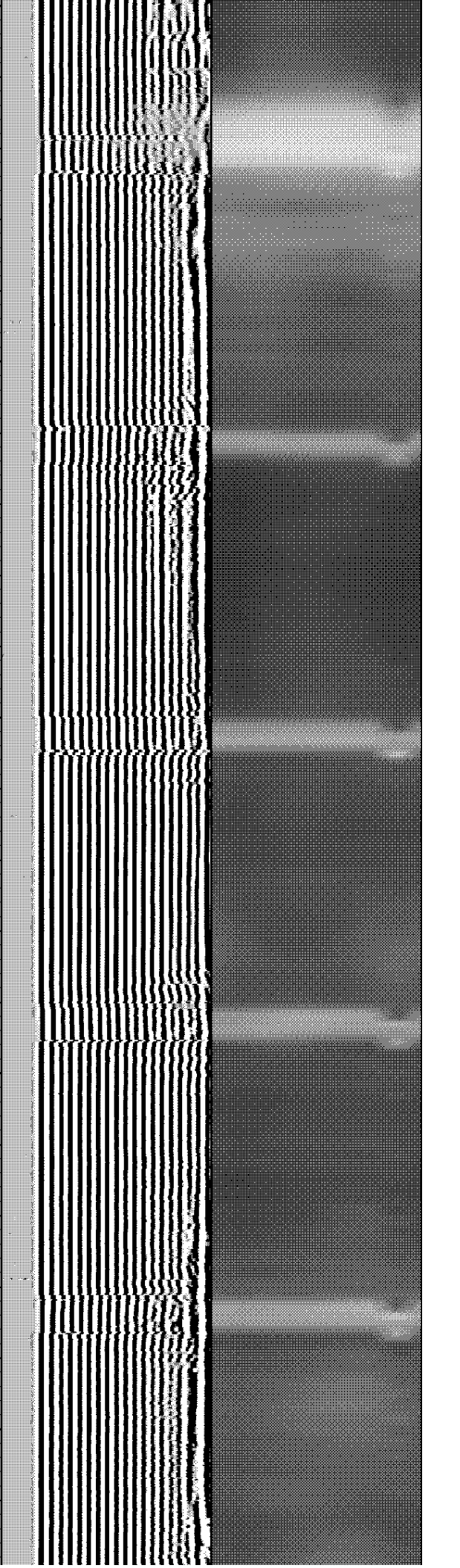
125.838

126.504

127.187

127.895

128.657



1750

1800

1850

1900

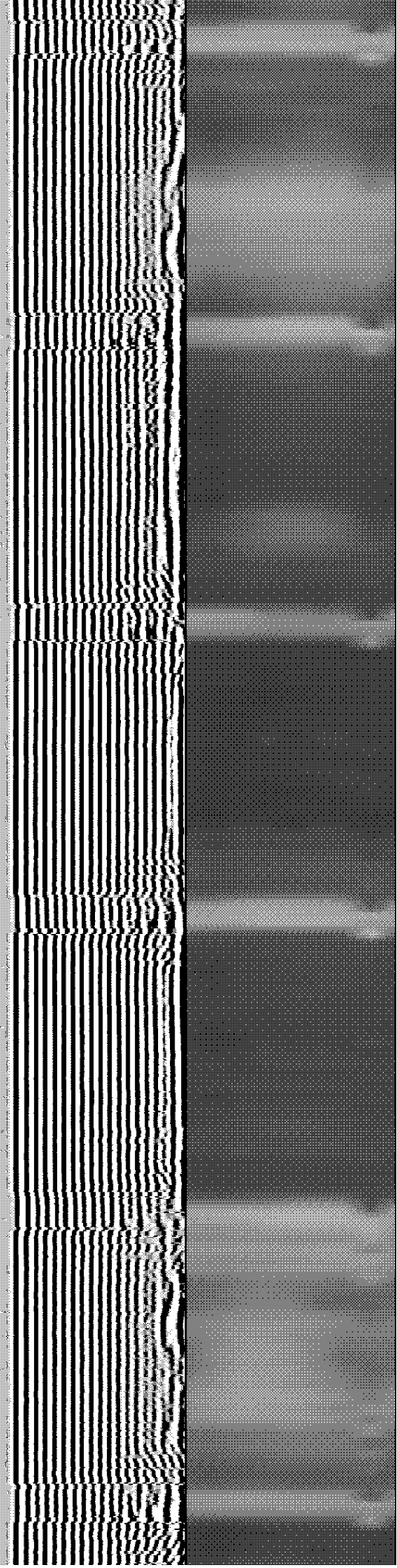
129.31

129.87

130.62

131.149

131.791



1950

2000

2050

2100

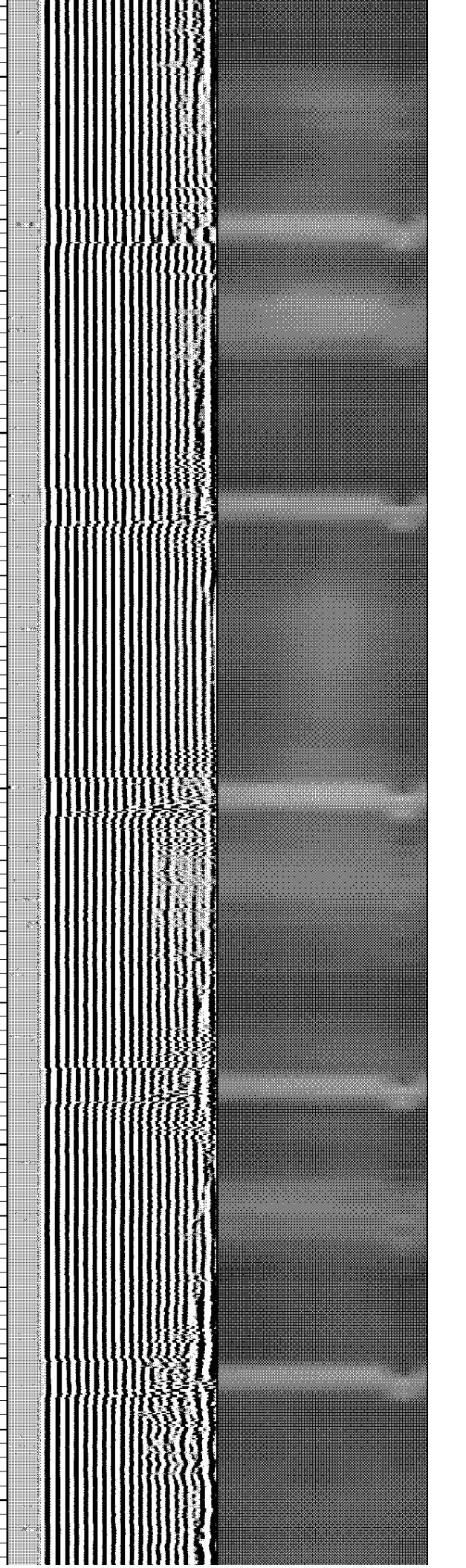
2150

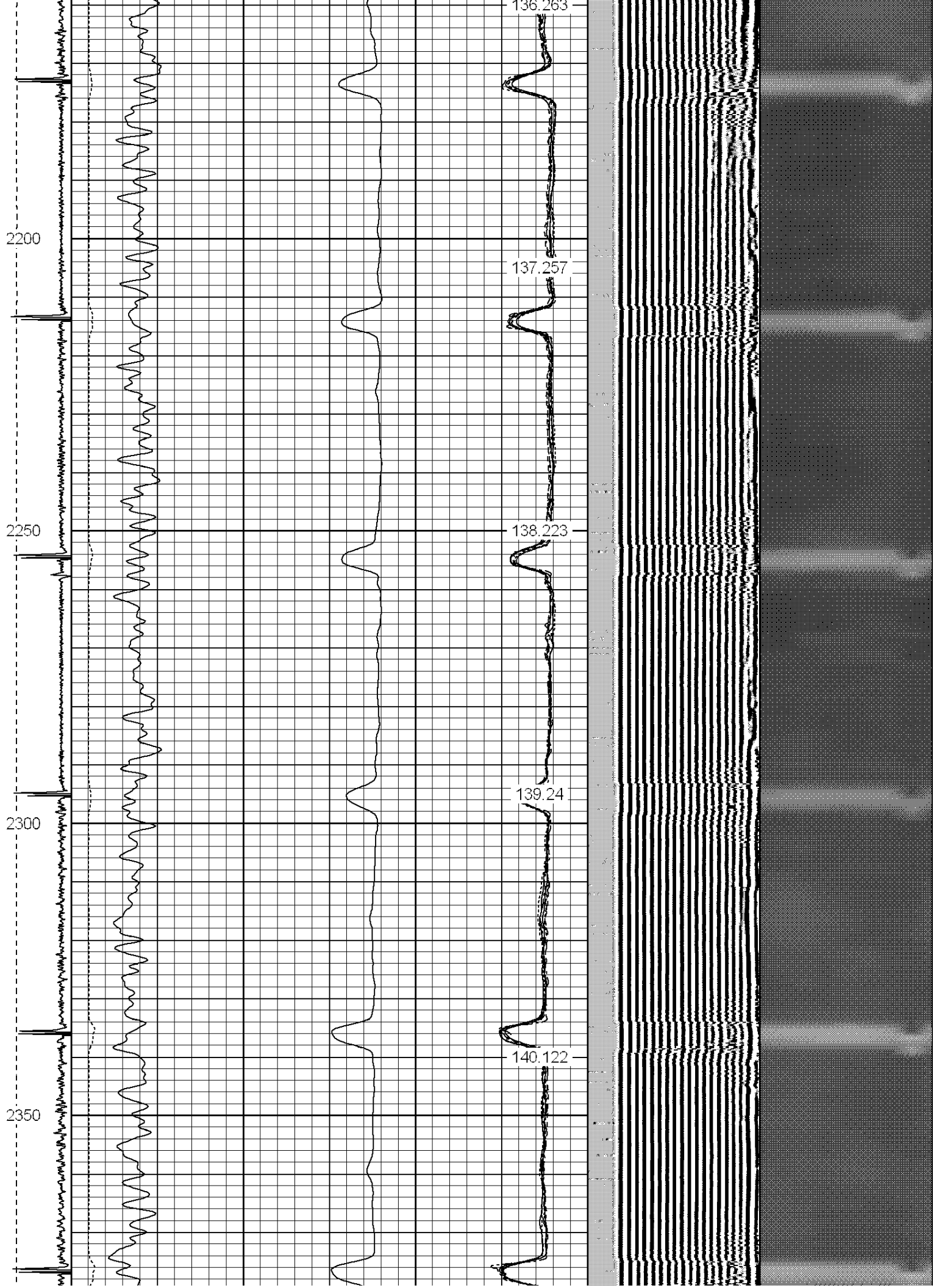
132.377

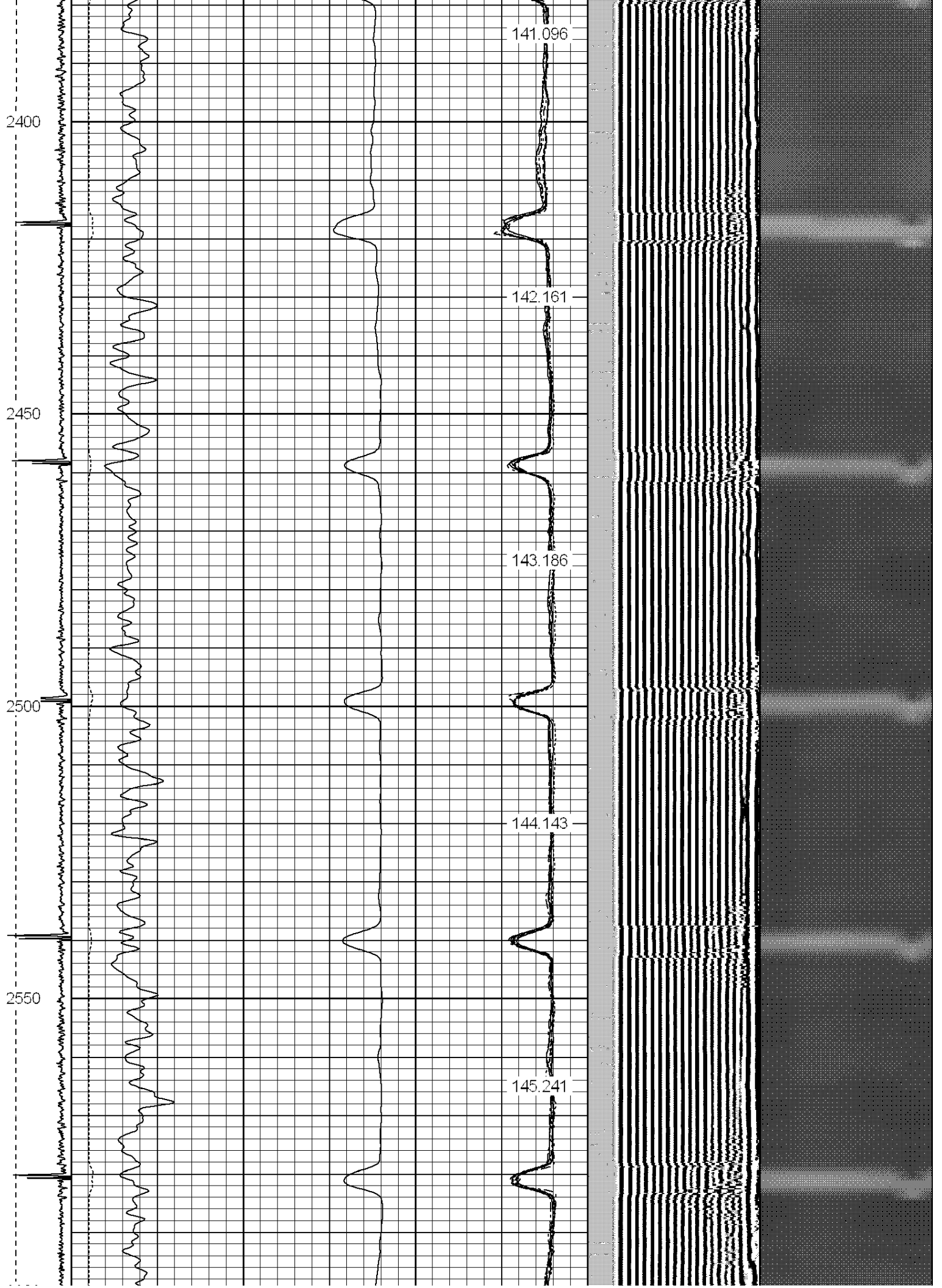
133.339

134.264

135.366







2600
2650
2700
2750
2800

146.242

147.261

148.193

149.131

150.188

2850

2900

2950

3000

151.175

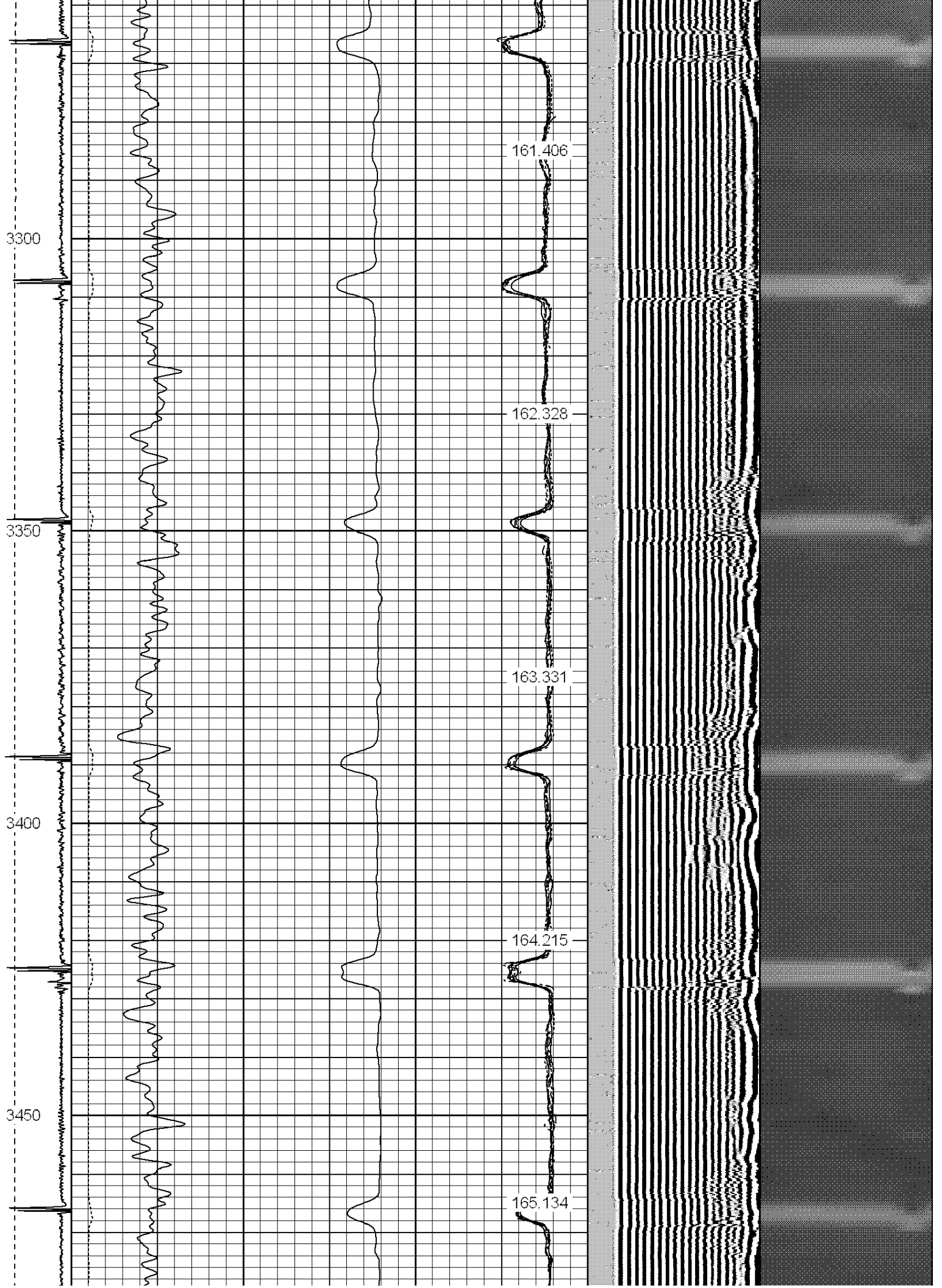
152.239

153.263

154.327

155.407





3500

3550

3600

3650

166.146

166.988

167.804

168.743

169.604

3700

3750

3800

3850

3900

Top of Cement

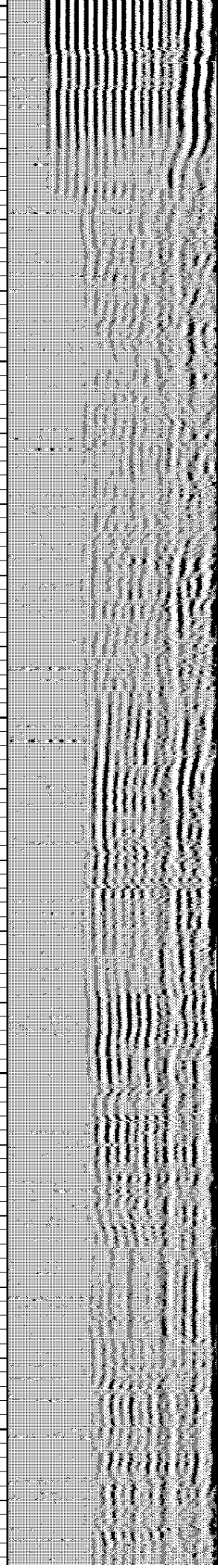
170.489

171.383

172.279

173.19

173.988



3950

4000

4050

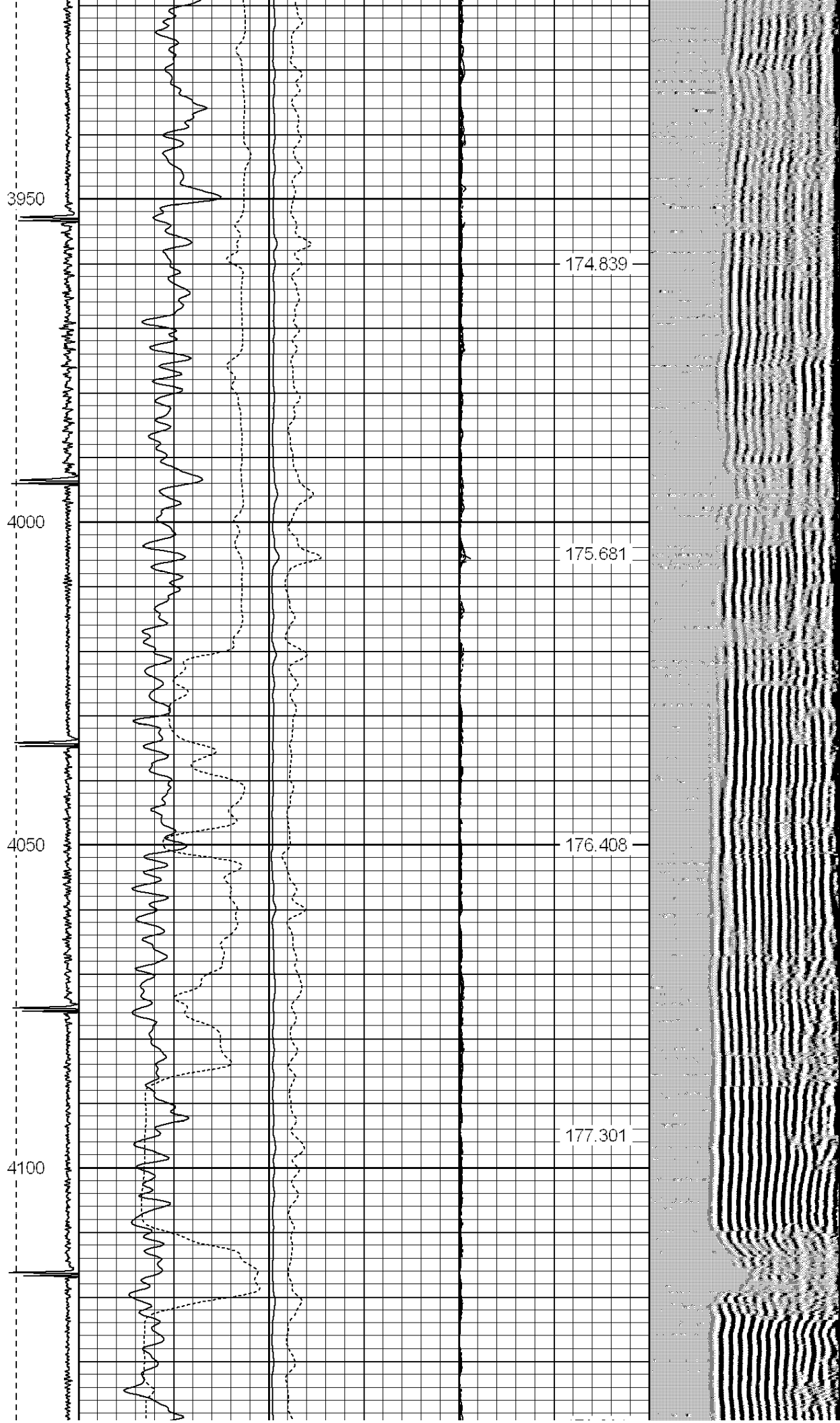
4100

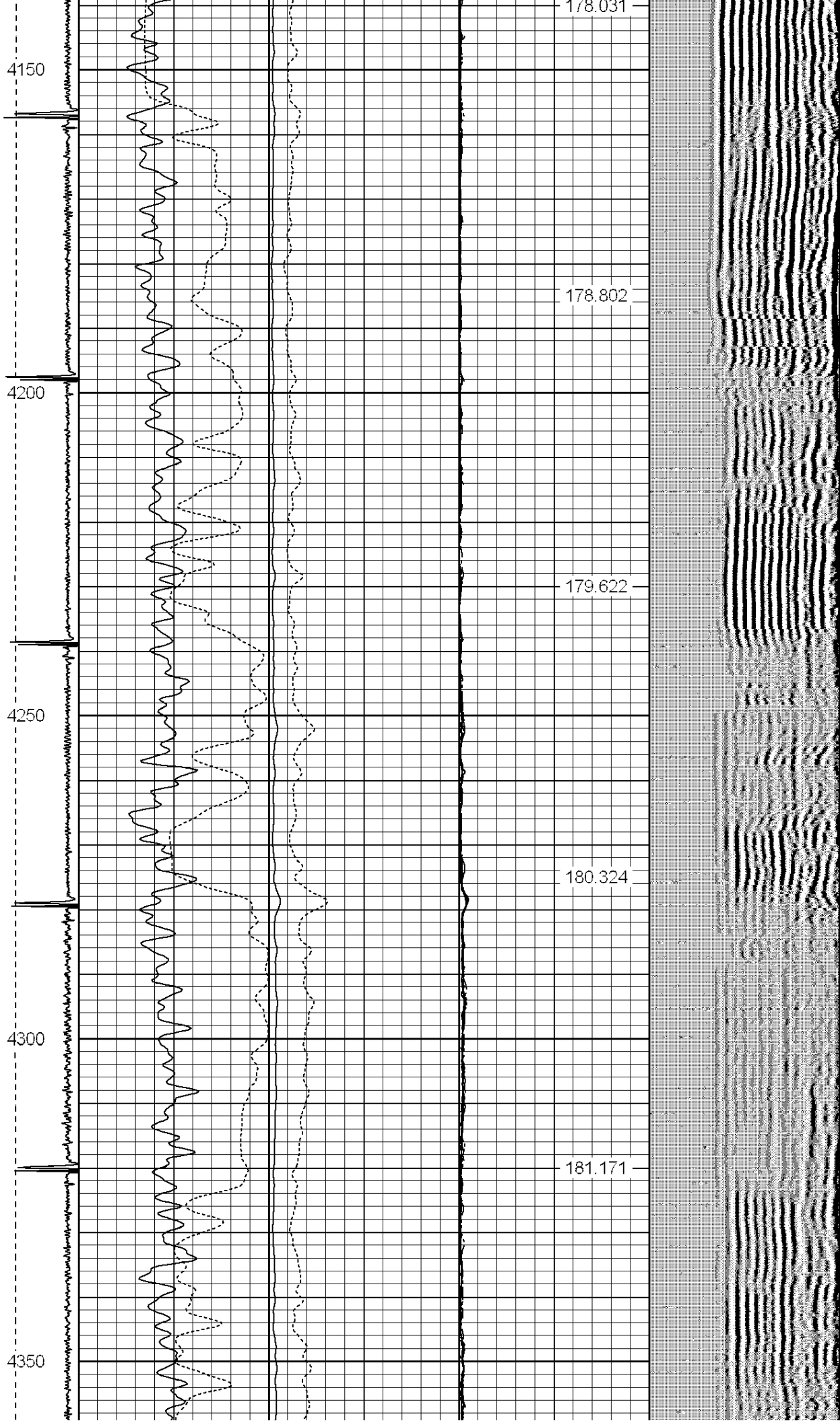
174.839

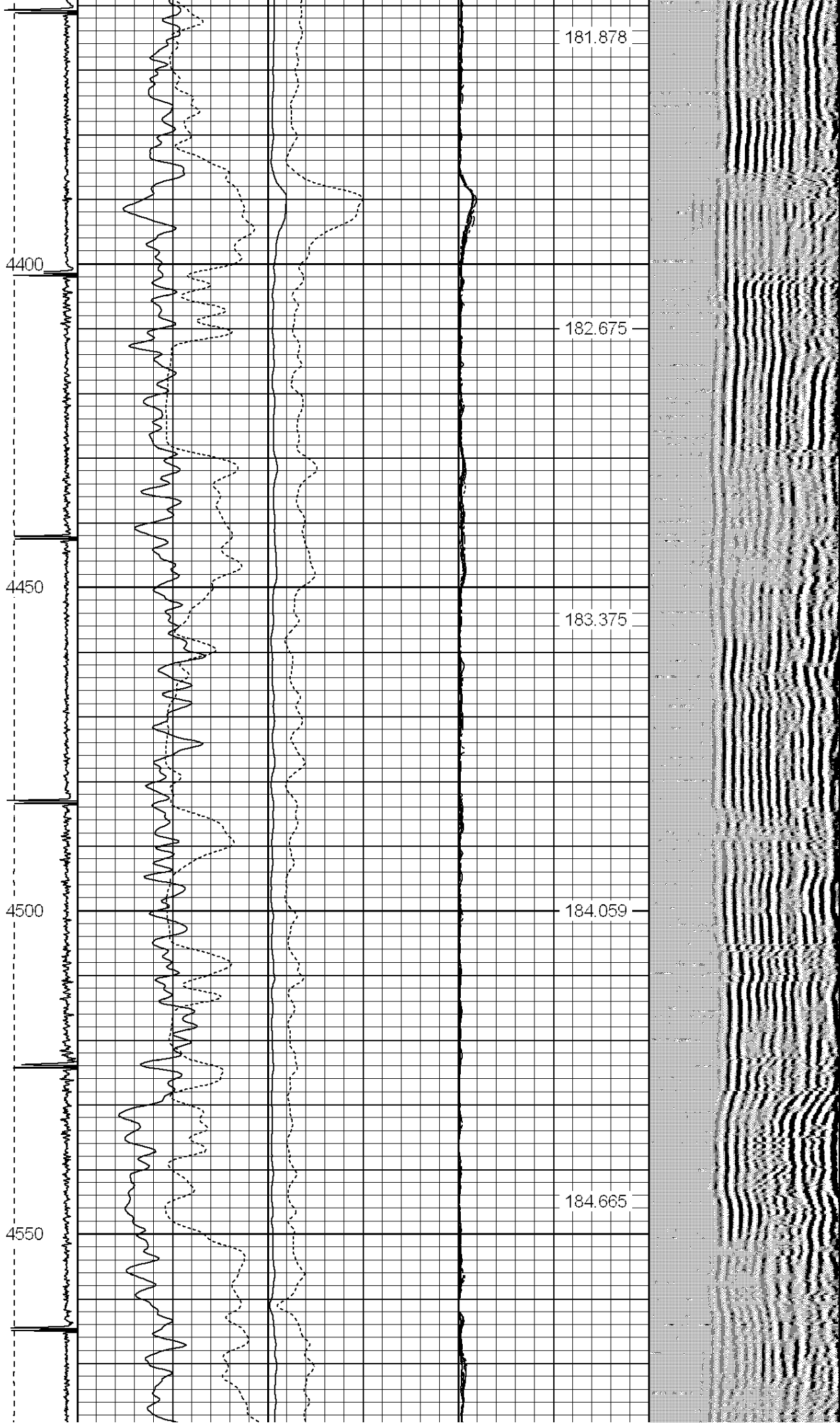
175.681

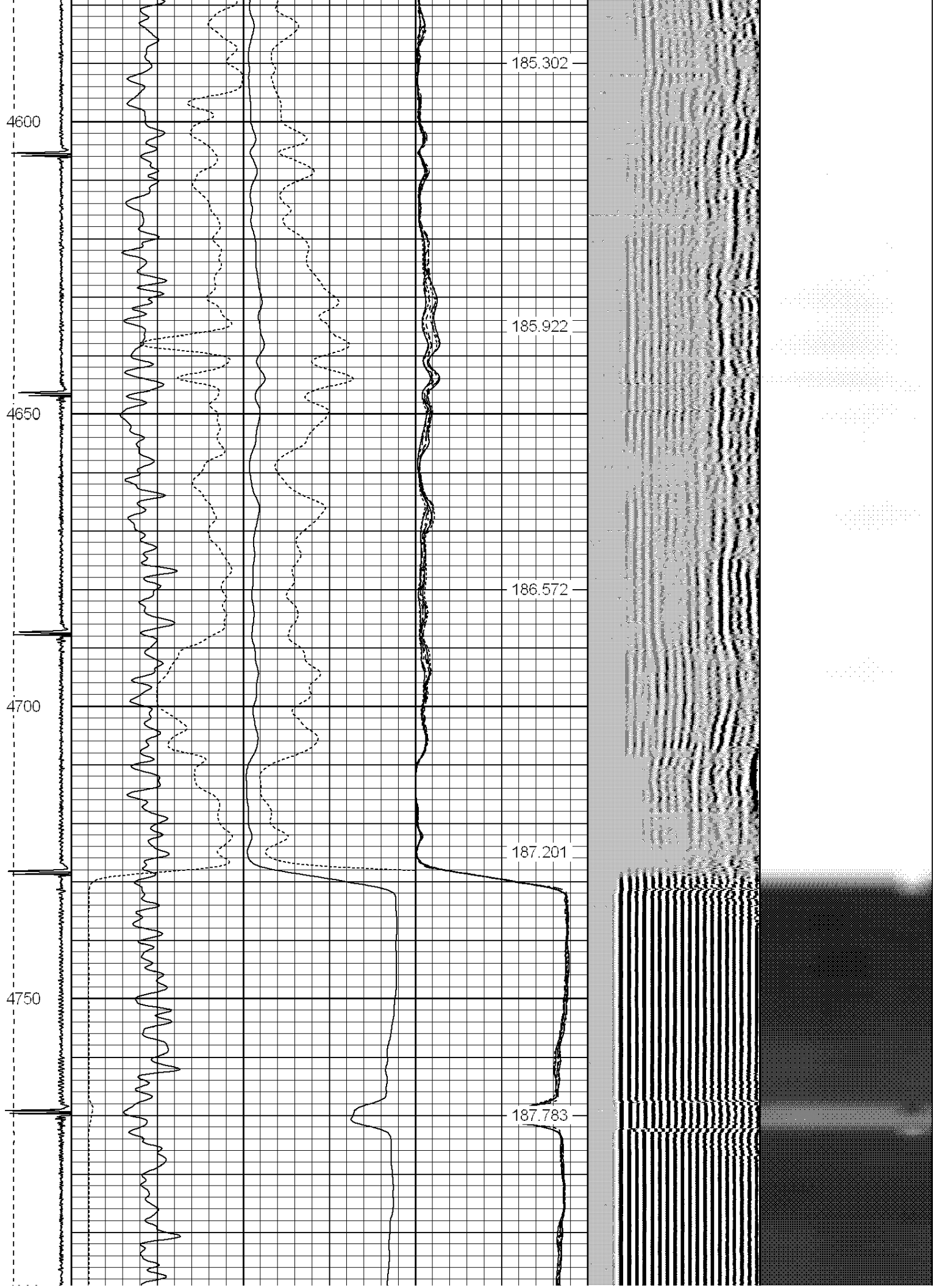
176.408

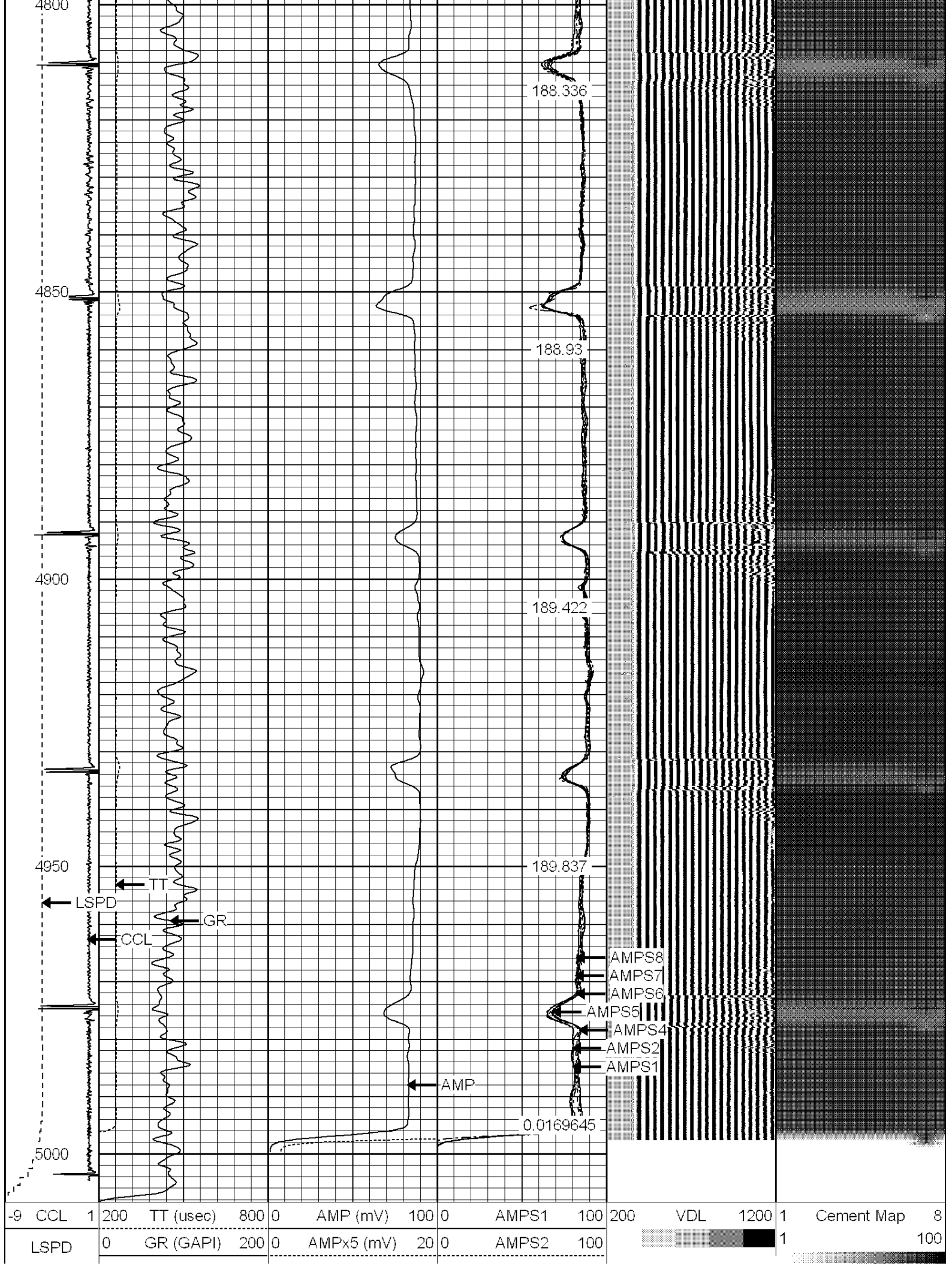
177.301







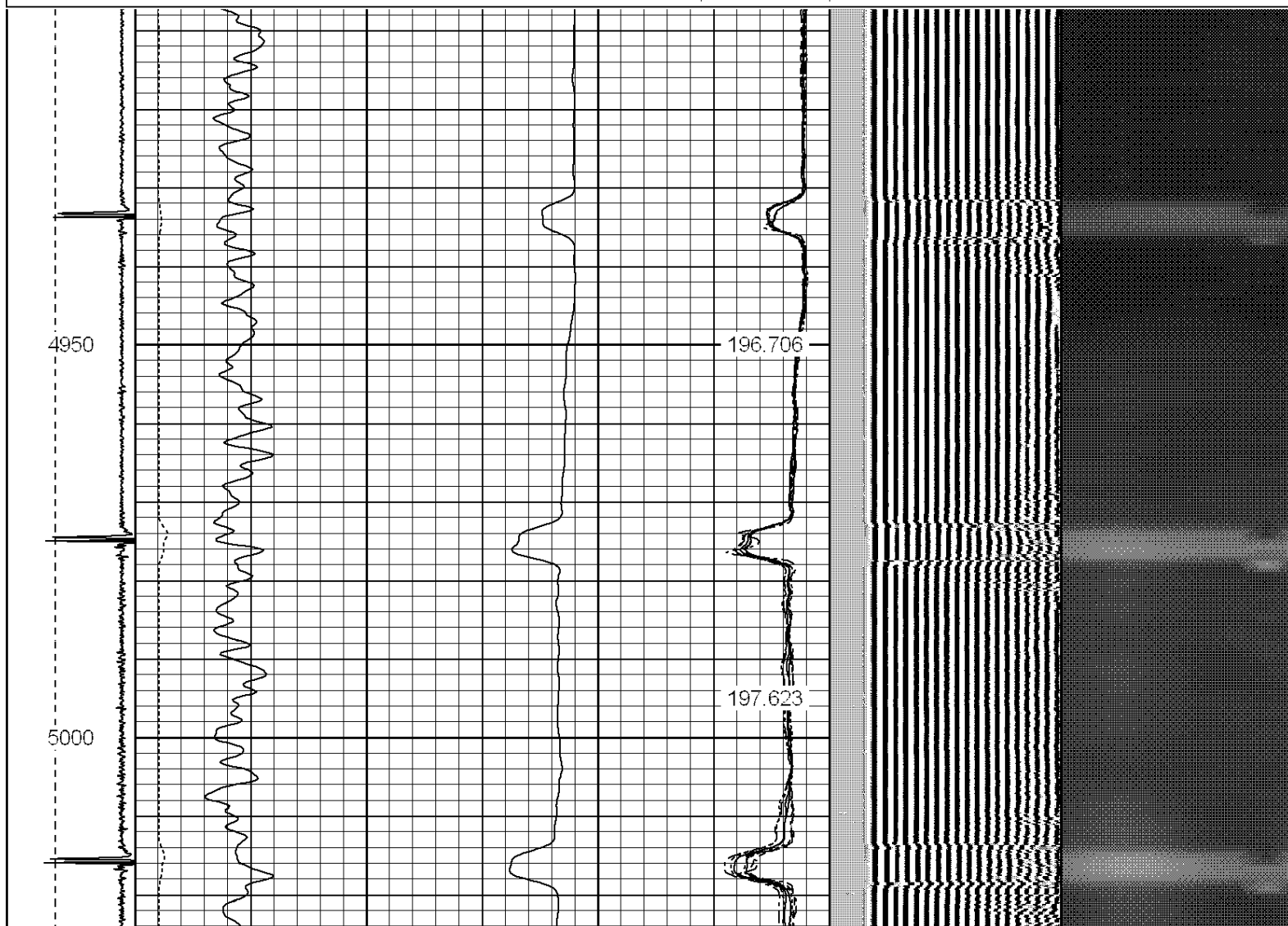




(ft/min)	200	GR (GAPI)	400	0	AMPS4	100
0	250			0	AMPS5	100
				0	AMPS6	100
				0	AMPS7	100
				0	AMPS8	100
					IntTemp	
					(degF)	

Database File: elliot karl unit #1.db
 Dataset Pathname: pass5
 Presentation Format: ips_rbt
 Dataset Creation: Fri Jun 20 14:47:28 2014 by Log SCH 120126
 Charted by: Depth in Feet scaled 1:240

-9	CCL	1	200	TT (usec)	800	0	AMP (mV)	100	0	AMPS1	100	200	VDL	1200	1	Cement Map	8
	LSPD		0	GR (GAPI)	200	0	AMPx5 (mV)	20	0	AMPS2	100				1		100
	(ft/min)		200	GR (GAPI)	400				0	AMPS4	100						
0	250								0	AMPS5	100						
									0	AMPS6	100						
									0	AMPS7	100						
									0	AMPS8	100						
										IntTemp							
										(degF)							



5050

5100

5150

5200

198.493

199.403

200.348

201.208

202.18



5250

5300

5350

5400

5450

203.152

204.084

205.098

206.056

206.867



5500

5550

5600

5650

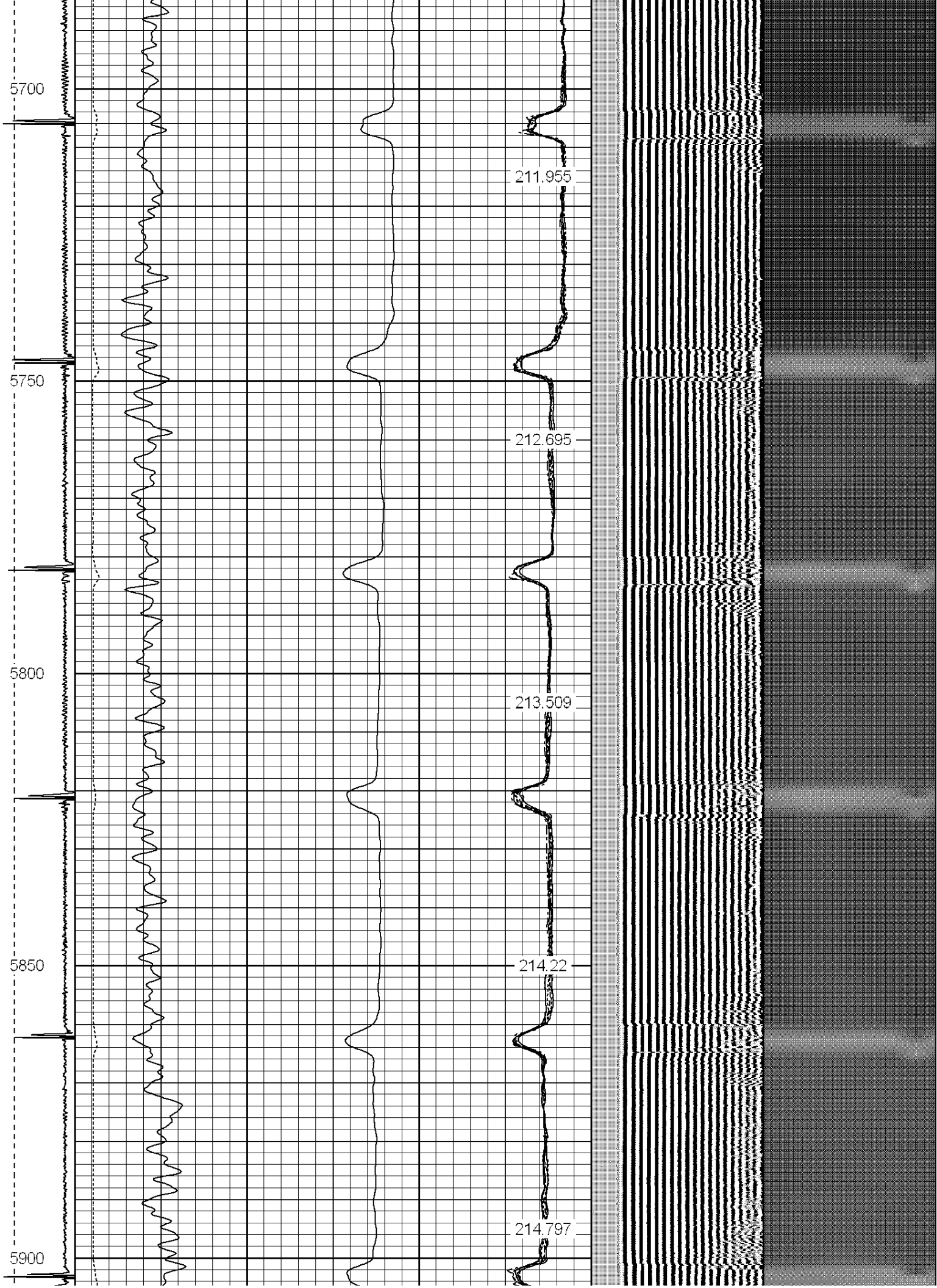
207.721

208.74

209.483

210.366

211.184





6150

6200

6250

6300

218.107

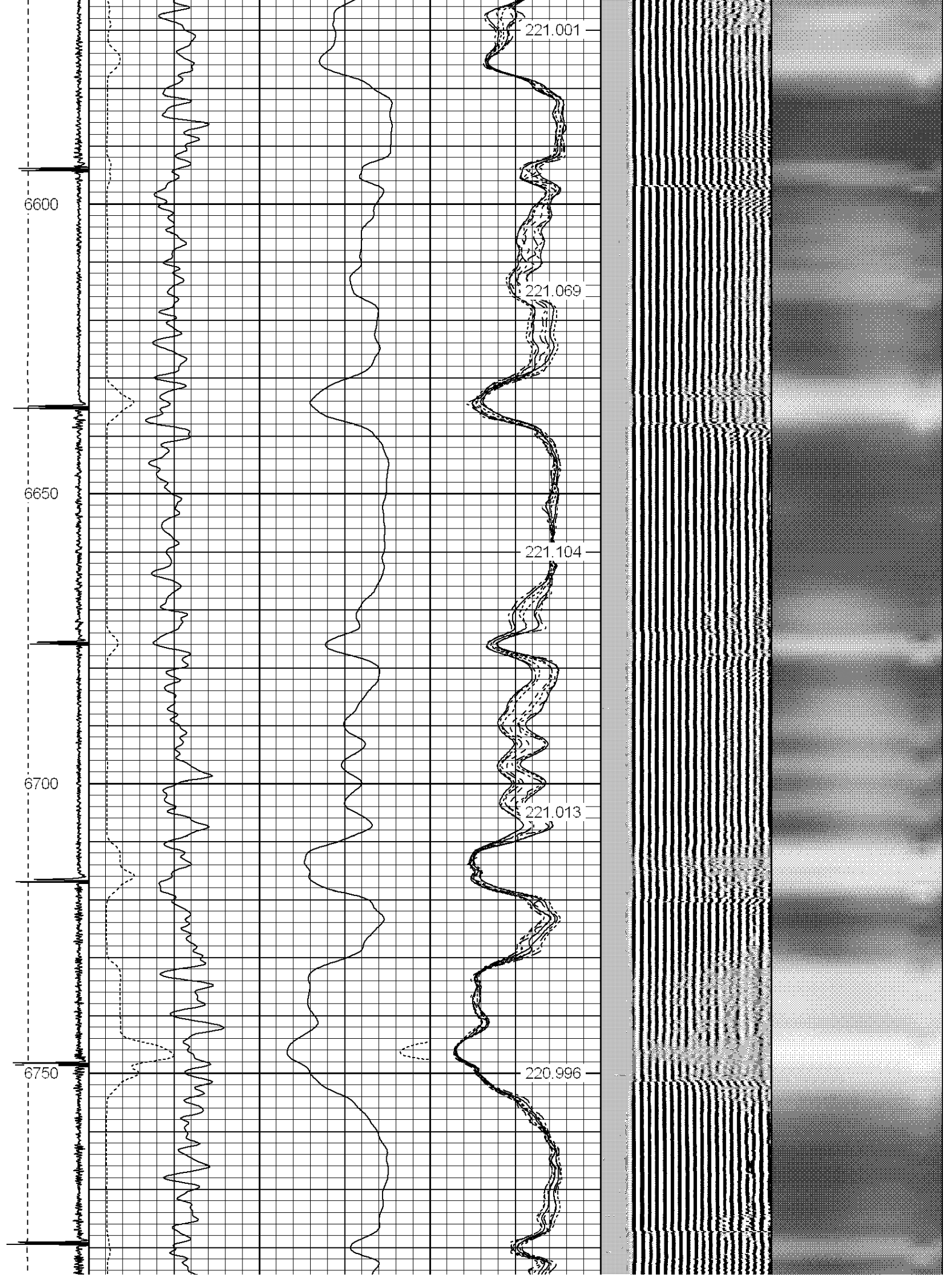
218.552

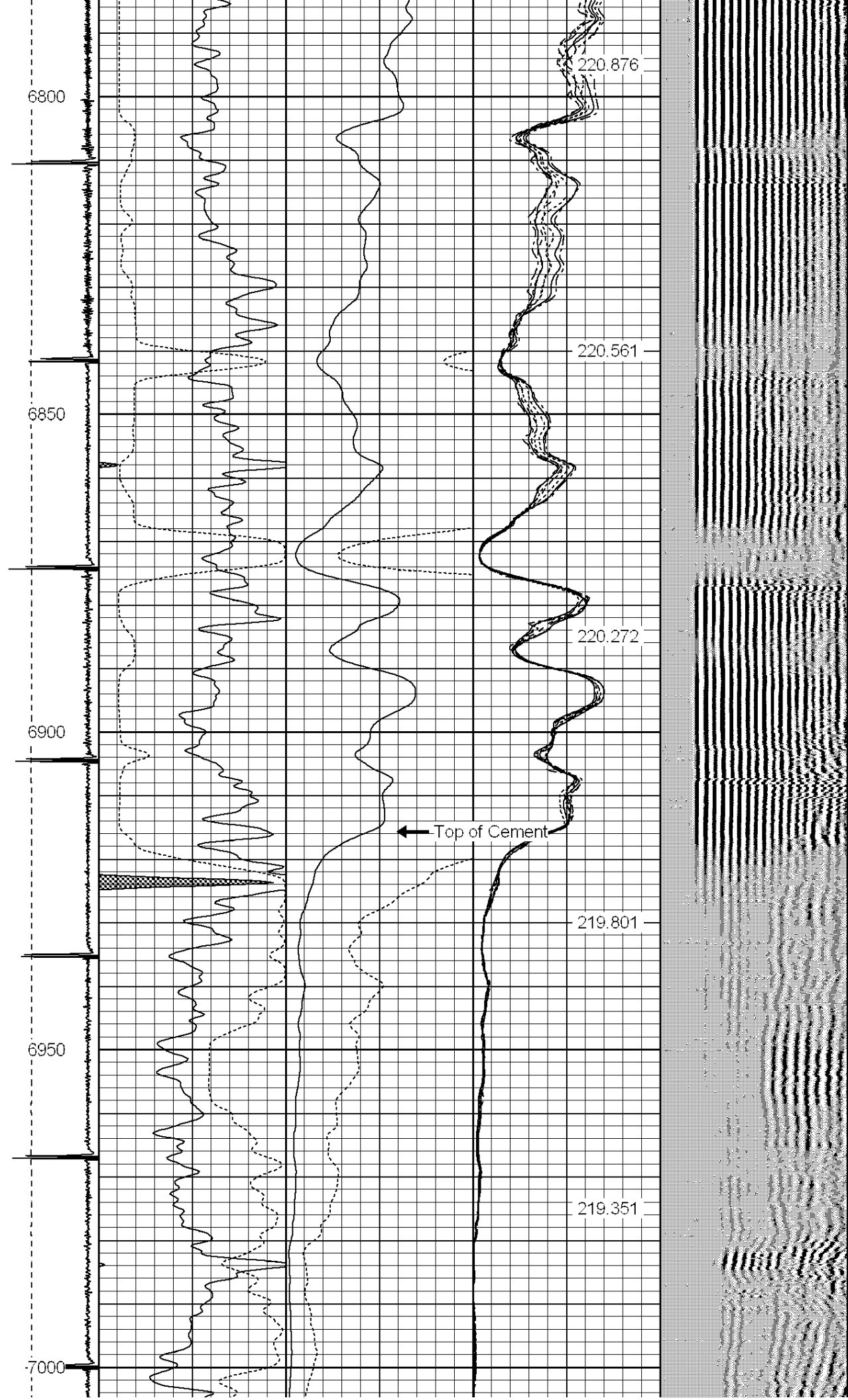
218.912

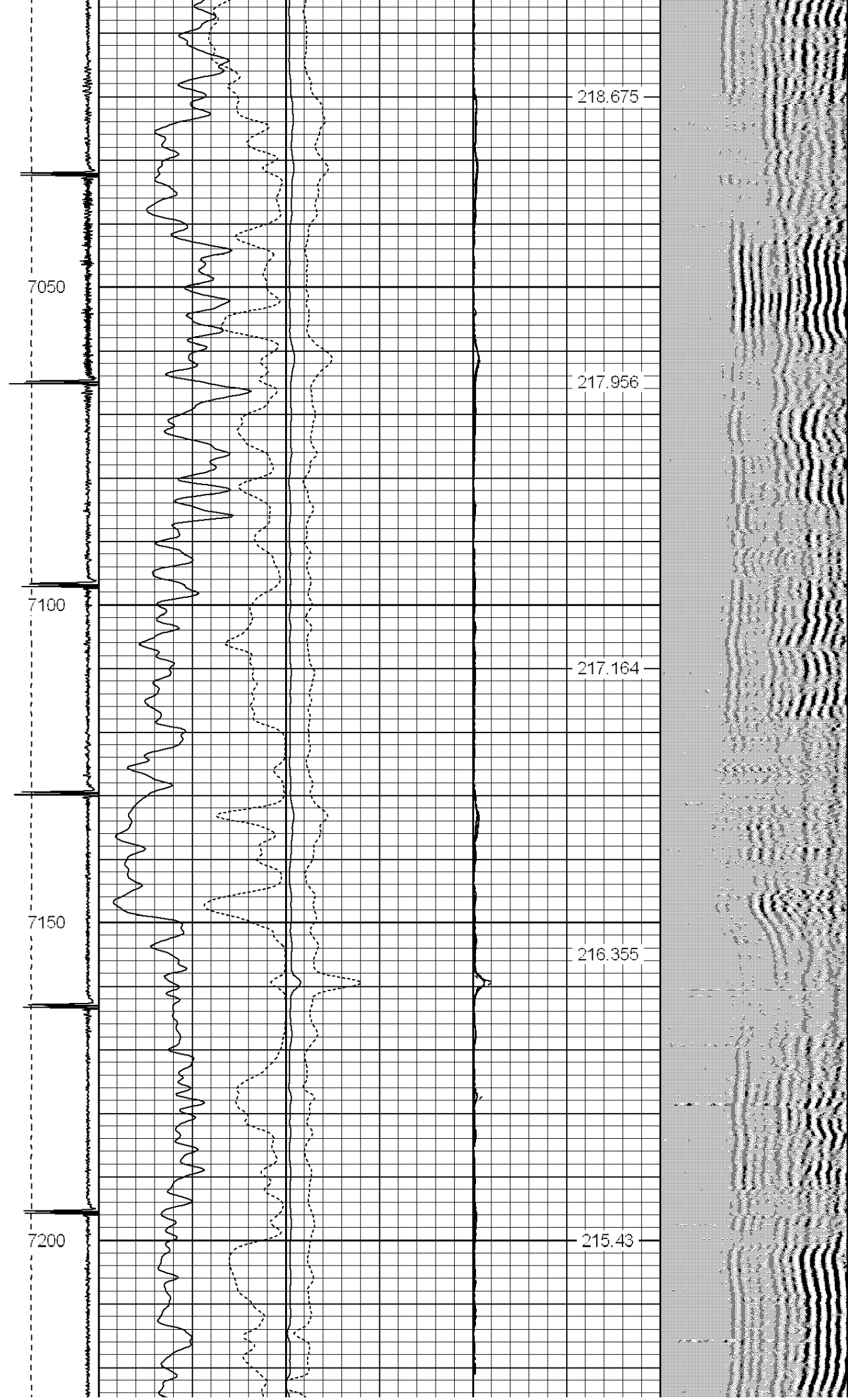
219.386

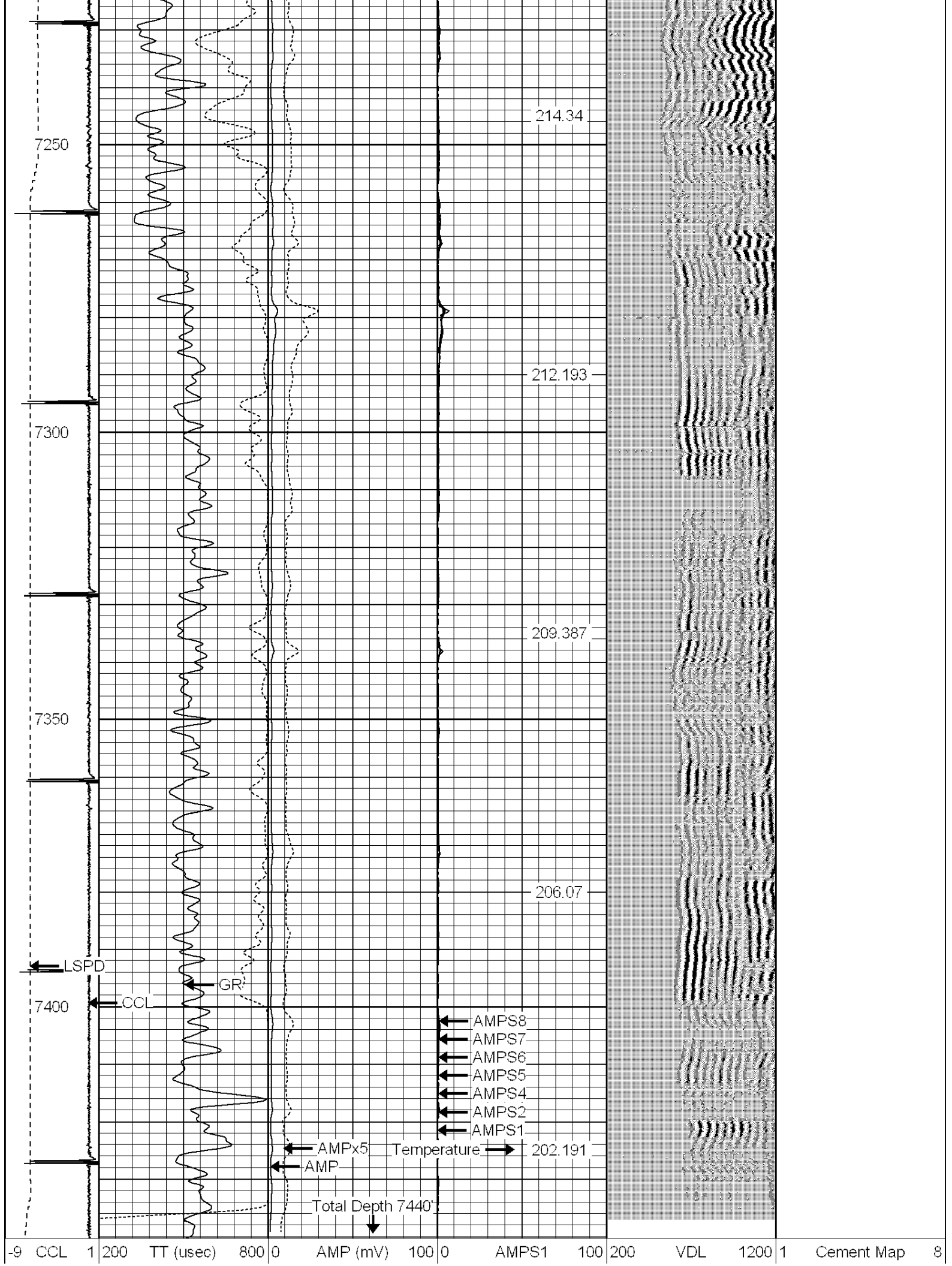
219.667











LSPD (ft/min)	0	GR (GAPI)	200	0	AMPx5 (mV)	20	0	AMPS2	100	1	100
	200	GR (GAPI)	400	0			0	AMPS4	100		
0	250			0			0	AMPS5	100		
				0			0	AMPS6	100		
				0			0	AMPS7	100		
				0			0	AMPS8	100		
								IntTemp (degF)			



WARRIOR

ENERGY SERVICES

Company

KERR MCGEE OIL AND GAS ONSHORE

Well

ELLIOT, KARL UNIT #1

Field

WATTENBERG

County

WELD

State

COLORADO