



Cathedral Energy Services
1049 Pyrite Rd.
Casper, Wyoming
82604

145021

5":100' - TVD
2/3/2014 8:20:00 AM

Oper. Company: Encana Oil & Gas
Country: USA
State / Province: CO
County / Parish: Weld
Started: 01/21/2014 10:00 PM

API/UWI: 05-123-37785-00
Field: DJ Basin
Well: Lochbuie 2F-31H
Rig: H&P 522
Ended: 01/30/2014 07:00 PM

Personnel

Day Hand: Jared Nichols
Night Hand: Clarke Van Oerle
Comp. Emp: Cathedral Energy Service

Location

Latitude: 40.014080
Longitude: -104.712020
Elev. GL: 5007
Elev. DF: 30
Elev. KB: 5037

Gamma Ray
ROP
TD 11,821'

Hole Data

Size	From	To
12.25	0	866
8.75	866	7927
6.13	7927	11821

Casing Data

Size	From	To
9 5/8	0	1508
7	0	7927
7	0	11620

Bit Sizes

Size	From	To
12.25	0	866
8.75	866	7927
6.13	7927	11821

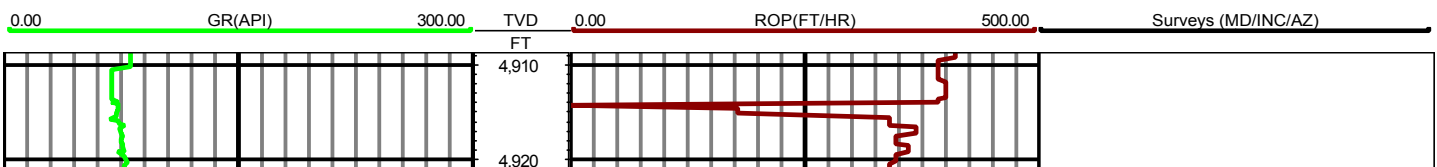
Mud Data

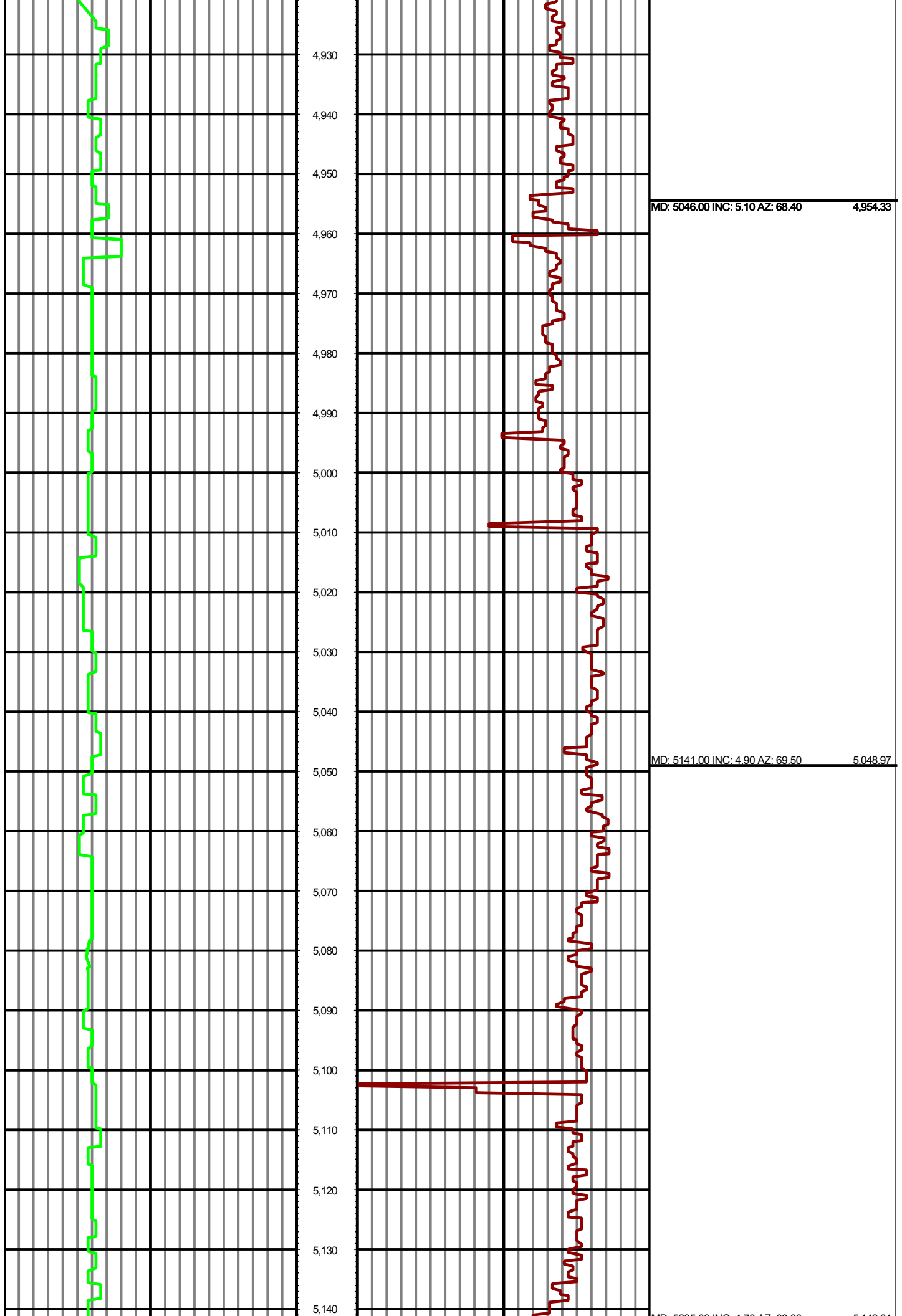
Type	Weight	Density	Viscosity	Rm	Rmf	Rmc	From	To
Water	8.4		28				0	2500
LSND	9.8		35				2501	7500
LSND	10.1		26				7501	11821

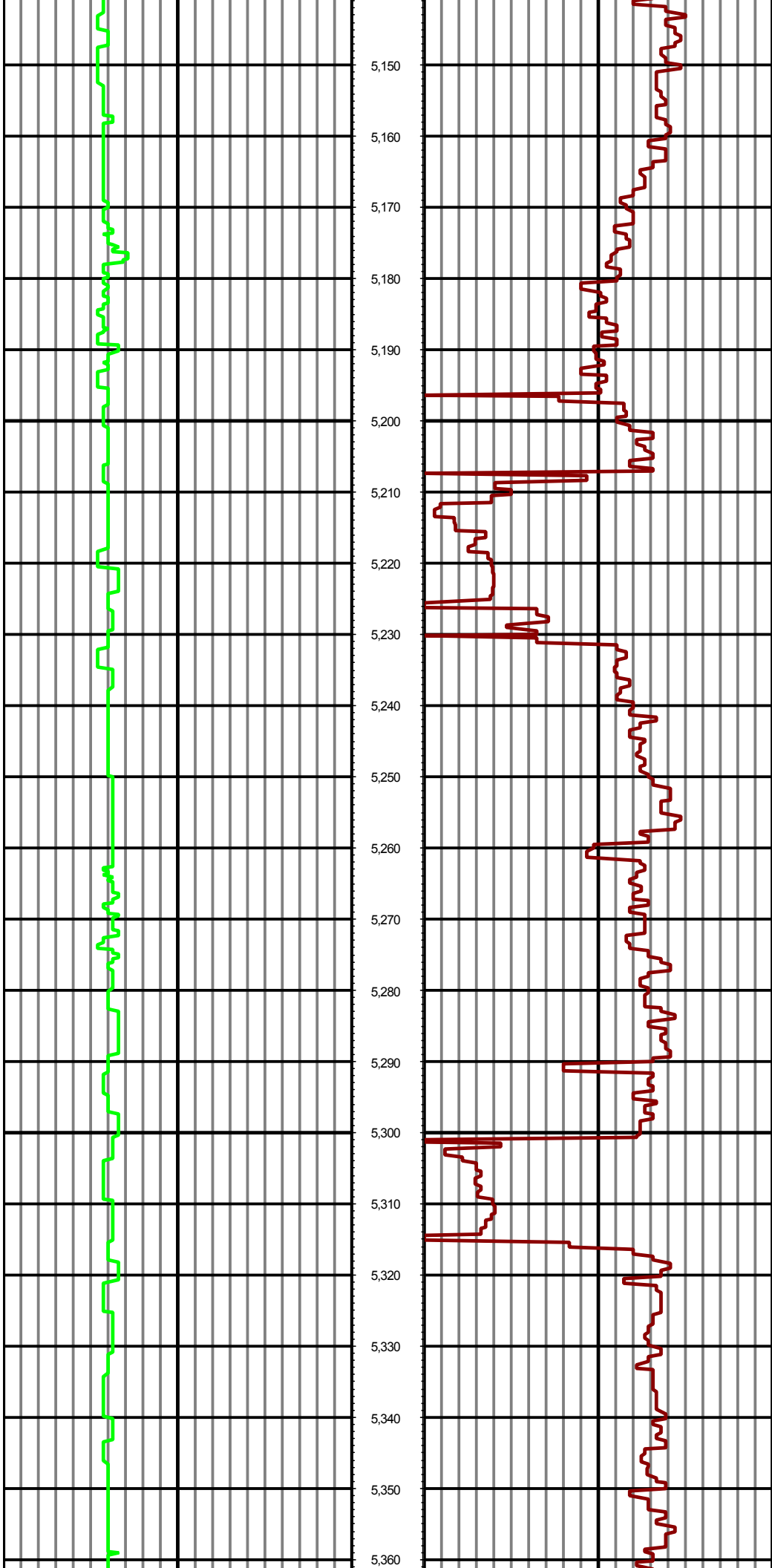
Tool Run Data

Serial Number	Gamma Offset	Resist. Offset	Start Time	Start Depth	End Time	End Depth
235	35.54	0	1/21/2014 3:00:54 AM	1508	1/22/2014 5:00:54 AM	6991
330	40.76	0	1/22/2014 6:00:35 PM	6991	1/24/2014 5:00:35 AM	7927
330	38.32	0	1/25/2014 4:30:47 PM	7927	1/28/2014 12:00:47 AM	10524
330	38.35	0	1/28/2014 1:00:41 PM	10524	1/31/2014 9:00:41 AM	11821

All interpretations are opinions based on inferences from electrical or other measurements and we cannot and do not guarantee the accuracy or correctness of any interpretation, and we shall not except in the case of gross or willful negligence on our part, be liable or responsible for any loss, cost damages or expenses incurred or sustained by anyone resulting from an interpretation made by any of our officers, agents, or employees.







MD: 5235.00 INC: 4.70 AZ: 68.00

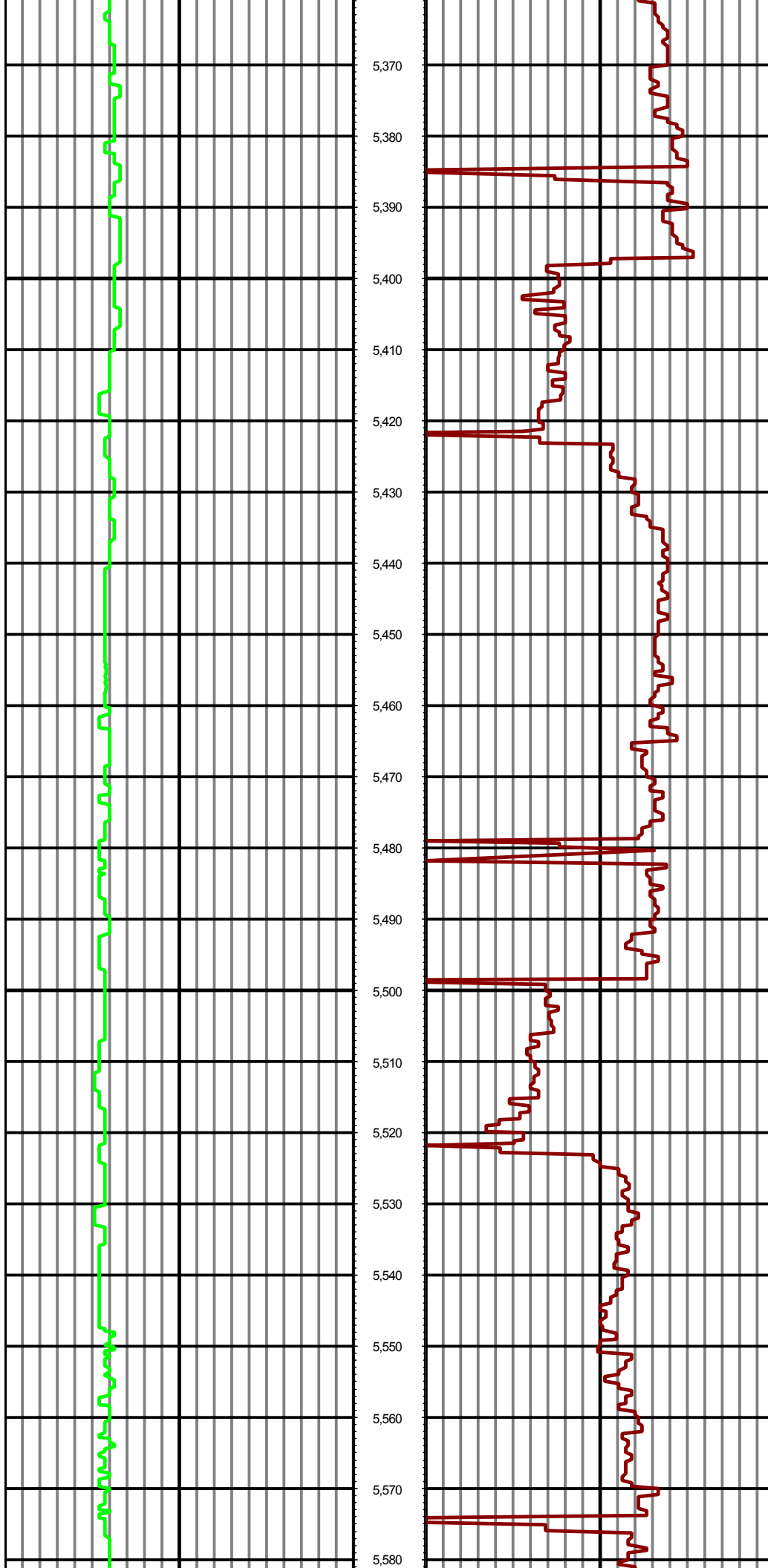
5,142.64

MD: 5330.00 INC: 3.80 AZ: 66.00

5,237.38

MD: 5424.00 INC: 2.70 AZ: 69.40

5,331.23

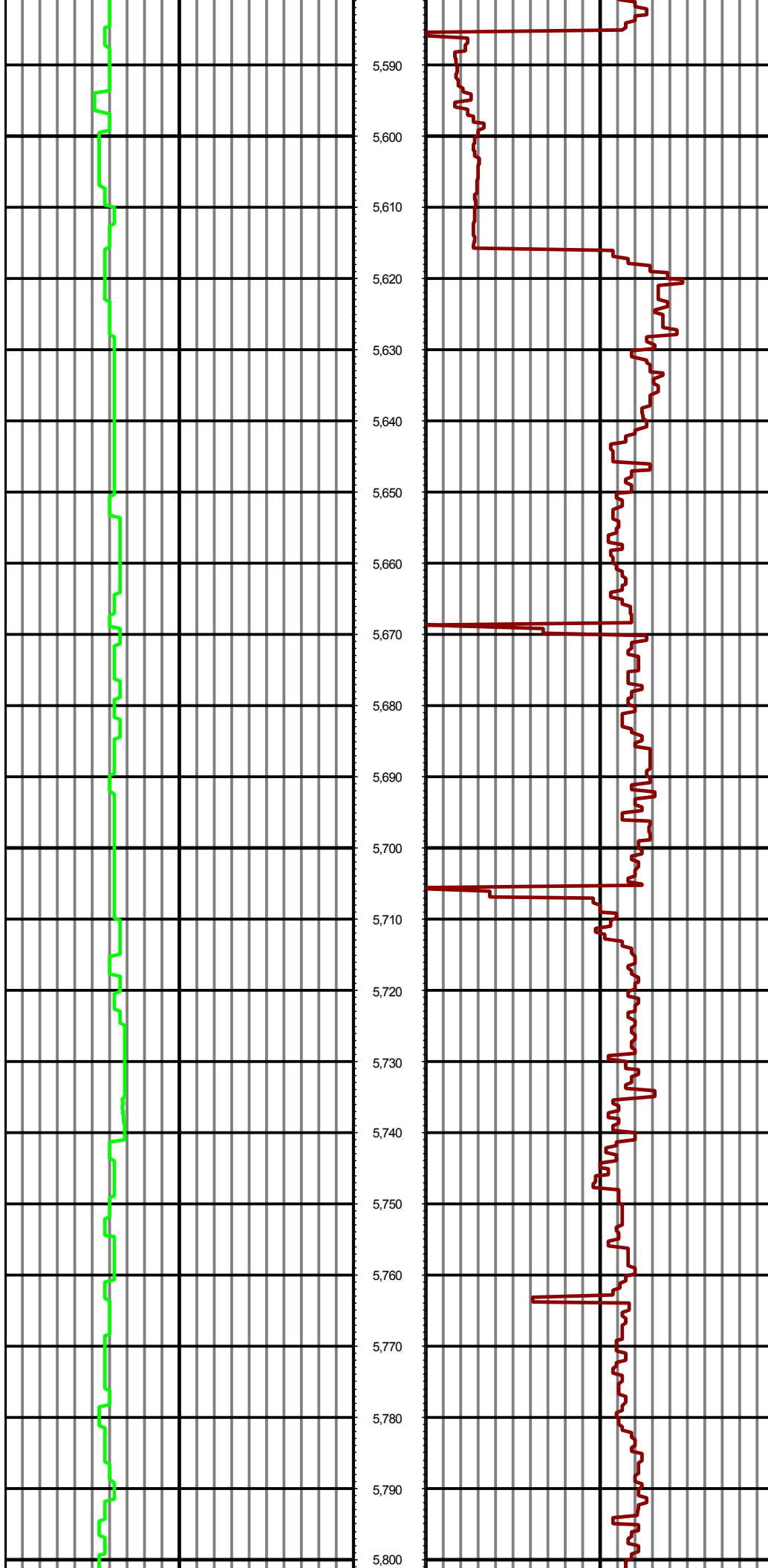


MD: 5519.00 INC: 2.50 AZ: 73.20

5,426.13

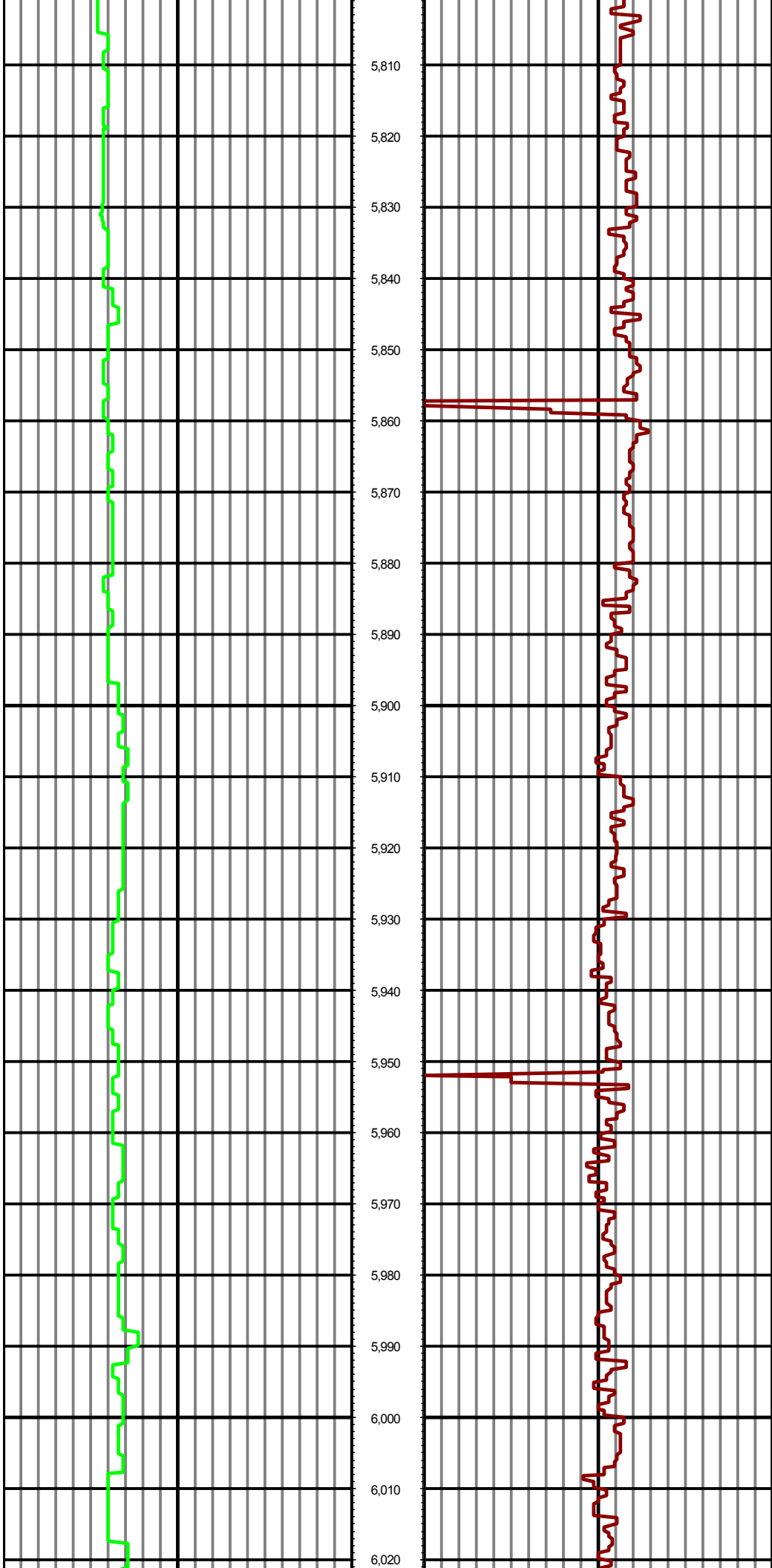
MD: 5614.00 INC: 2.20 AZ: 81.80

5,521.05



MD: 5708.00 INC: 0.60 AZ: 261.00 5,615.03

MD: 5803.00 INC: 0.80 AZ: 278.70 5,710.02



MD: 5897.00 INC: 0.80 AZ: 275.50 5,804.01

MD: 5992.00 INC: 0.50 AZ: 267.60 5,899.01

MD: 6087.00 INC: 0.20 AZ: 240.00 5,994.00

