

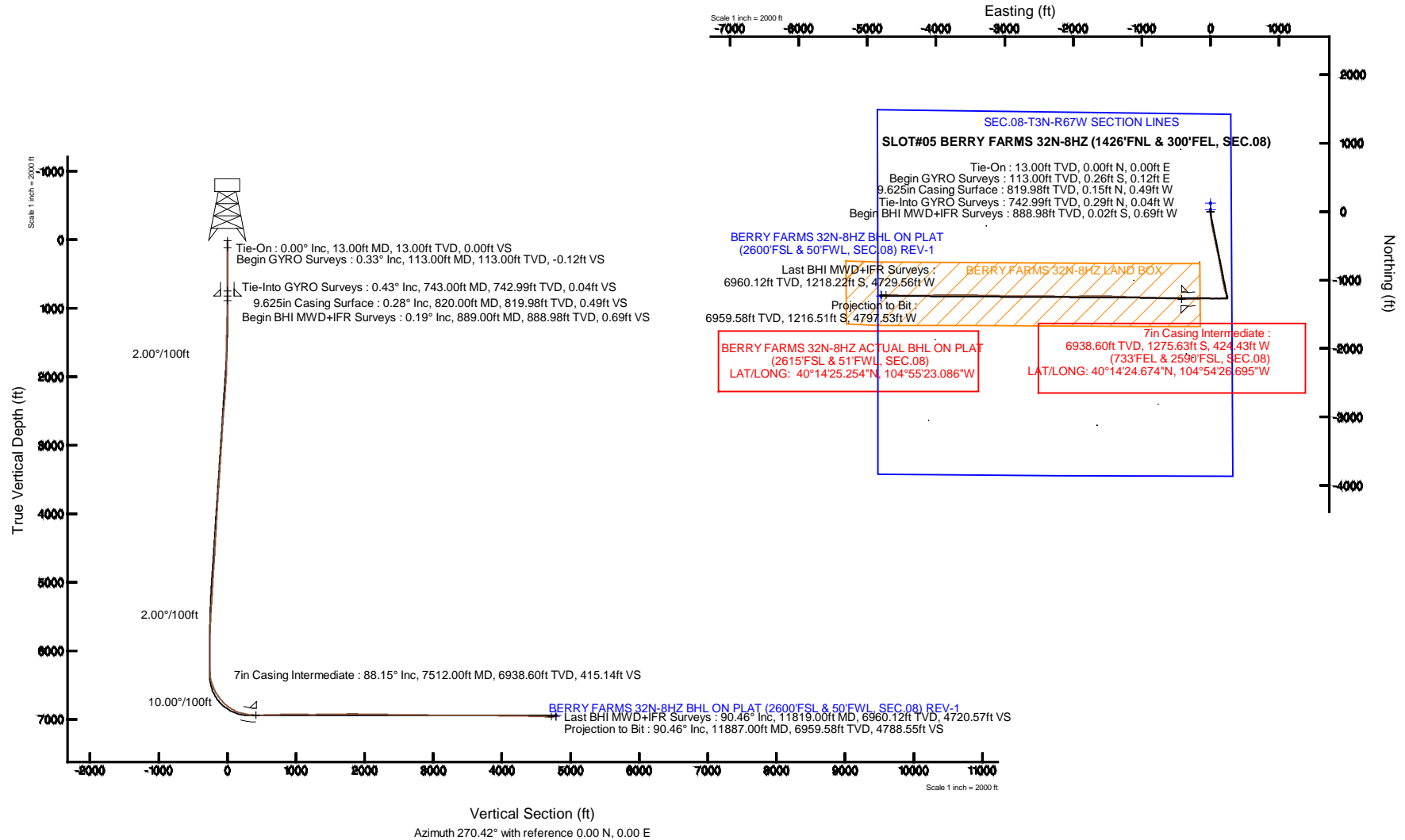
KERR-MCGEE OIL & GAS ONSHORE LP

Location: COLORADO Slot: SLOT#05 BERRY FARMS 32N-8HZ (1426'FNL & 300'FEL, SEC.08)
 Field: WELD COUNTY (KERR MCGEE) Well: BERRY FARMS 32N-8HZ
 Facility: SEC.08-T3N-R67W Wellbore: BERRY FARMS 32N-8HZ PWB



Plot reference wellpath is BERRY FARMS 32N-8HZ (REV-A.0) PWP

True vertical depths are referenced to ENSIGN 145 (13KB) (RKB)	Grid System: NAD83 / Lambert Colorado SP, Northern Zone (501), US feet
Measured depths are referenced to ENSIGN 145 (13KB) (RKB)	North Reference: True north
ENSGN 145 (13KB) (RKB) to Mean Sea Level: 4833 feet	Scale: True distance
Mean Sea Level to Mud line (At Slot: SLOT#05 BERRY FARMS 32N-8HZ (1426'FNL & 300'FEL, SEC.08)): 0 feet	Depths are in feet
Coordinates are in feet referenced to Slot	Created by: pccalin on 02/Jul/2014



Actual Wellpath Report

BERRY FARMS 32N-8HZ AWP

Page 1 of 6

REFERENCE WELLPATH IDENTIFICATION			
Operator	KERR-MCGEE OIL & GAS ONSHORE LP	Slot	SLOT#05 BERRY FARMS 32N-8HZ (1426'FNL & 300'FEL, SEC.08)
Area	COLORADO	Well	BERRY FARMS 32N-8HZ
Field	WELD COUNTY (KERR MCGEE)	Wellbore	BERRY FARMS 32N-8HZ AWP
Facility	SEC.08-T3N-R67W		

REPORT SETUP INFORMATION			
Projection System	NAD83 / Lambert Colorado SP, Northern Zone (501), US feet	Software System	WellArchitect® 4.0.0
North Reference	True	User	Precain
Scale	0.999957	Report Generated	01/Jul/2014 at 22:18
Convergence at slot	n/a	Database/Source file	WellArchitectDB/BERRY_FARMS_32N-8HZ_AWP.xml

WELLPATH LOCATION						
	Local coordinates		Grid coordinates		Geographic coordinates	
	North[ft]	East[ft]	Easting[US ft]	Northing[US ft]	Latitude	Longitude
Slot Location	-119.92	0.08	3165844.66	1332173.21	40°14'37.280"N	104°54'21.222"W
Facility Reference Pt			3165843.78	1332293.12	40°14'38.465"N	104°54'21.223"W
Field Reference Pt			3197771.84	1268891.29	40°04'09.600"N	104°47'36.000"W

WELLPATH DATUM			
Calculation method	Minimum curvature	ENSIGN 145 (13'KB) (RKB) to Facility Vertical Datum	4833.00ft
Horizontal Reference Pt	Slot	ENSIGN 145 (13'KB) (RKB) to Mean Sea Level	4833.00ft
Vertical Reference Pt	ENSIGN 145 (13'KB) (RKB)	ENSIGN 145 (13'KB) (RKB) to Mud Line at Slot (SLOT#05 BERRY FARMS 32N-8HZ (1426'FNL & 300'FEL, SEC.08))	4833.00ft
MD Reference Pt	ENSIGN 145 (13'KB) (RKB)	Section Origin	N 0.00, E 0.00 ft
Field Vertical Reference	Mean Sea Level	Section Azimuth	270.42°

Actual Wellpath Report

BERRY FARMS 32N-8HZ AWP

Page 2 of 6

REFERENCE WELLPATH IDENTIFICATION			
Operator	KERR-MCGEE OIL & GAS ONSHORE LP	Slot	SLOT#05 BERRY FARMS 32N-8HZ (1426'FNL & 300'FEL, SEC.08)
Area	COLORADO	Well	BERRY FARMS 32N-8HZ
Field	WELD COUNTY (KERR MCGEE)	Wellbore	BERRY FARMS 32N-8HZ AWP
Facility	SEC.08-T3N-R67W		

WELLPATH DATA (136 stations) † = interpolated/extrapolated station

MD [ft]	Inclination [°]	Azimuth [°]	TVD [ft]	Vert Sect [ft]	North [ft]	East [ft]	Latitude	Longitude	DLS [°/100ft]	Comments
0.00†	0.000	156.010	0.00	0.00	0.00	0.00	40°14'37.280"N	104°54'21.222"W	0.00	
13.00	0.000	156.010	13.00	0.00	0.00	0.00	40°14'37.280"N	104°54'21.222"W	0.00	Tie-On
113.00	0.330	156.010	113.00	-0.12	-0.26	0.12	40°14'37.277"N	104°54'21.220"W	0.33	Begin GYRO Surveys
213.00	0.150	13.820	213.00	-0.27	-0.40	0.27	40°14'37.276"N	104°54'21.219"W	0.46	
313.00	0.430	152.780	313.00	-0.47	-0.61	0.47	40°14'37.274"N	104°54'21.216"W	0.55	
413.00	0.620	73.680	413.00	-1.16	-0.79	1.16	40°14'37.272"N	104°54'21.207"W	0.68	
513.00	0.450	322.520	512.99	-1.44	-0.32	1.44	40°14'37.277"N	104°54'21.203"W	0.89	
613.00	0.390	299.070	612.99	-0.90	0.15	0.90	40°14'37.282"N	104°54'21.210"W	0.18	
713.00	0.470	269.350	712.99	-0.19	0.31	0.20	40°14'37.283"N	104°54'21.219"W	0.23	
743.00	0.430	259.410	742.99	0.04	0.29	-0.04	40°14'37.283"N	104°54'21.222"W	0.29	Tie-Into GYRO Surveys
889.00	0.190	206.720	888.98	0.69	-0.02	-0.69	40°14'37.280"N	104°54'21.231"W	0.24	Begin BHI MWD+IFR Surveys
1012.00	2.130	163.930	1011.95	0.13	-2.40	-0.14	40°14'37.256"N	104°54'21.224"W	1.62	
1106.00	2.760	145.870	1105.87	-1.65	-5.96	1.61	40°14'37.221"N	104°54'21.201"W	1.05	
1199.00	4.370	158.490	1198.69	-4.25	-11.11	4.16	40°14'37.170"N	104°54'21.168"W	1.92	
1293.00	6.290	163.630	1292.28	-7.07	-19.38	6.93	40°14'37.088"N	104°54'21.133"W	2.10	
1387.00	7.770	173.890	1385.57	-9.28	-30.64	9.06	40°14'36.977"N	104°54'21.105"W	2.06	
1480.00	9.390	181.750	1477.53	-9.82	-44.47	9.49	40°14'36.841"N	104°54'21.100"W	2.15	
1574.00	10.570	180.870	1570.11	-9.57	-60.76	9.13	40°14'36.680"N	104°54'21.104"W	1.27	
1667.00	12.490	181.710	1661.23	-9.28	-79.34	8.70	40°14'36.496"N	104°54'21.110"W	2.07	
1761.00	13.930	177.530	1752.74	-9.62	-100.81	8.88	40°14'36.284"N	104°54'21.107"W	1.84	
1854.00	15.880	175.560	1842.61	-11.26	-124.68	10.35	40°14'36.048"N	104°54'21.089"W	2.17	
1948.00	16.800	172.180	1932.81	-14.29	-150.96	13.20	40°14'35.788"N	104°54'21.052"W	1.41	
2041.00	18.400	169.860	2021.45	-18.91	-178.73	17.61	40°14'35.514"N	104°54'20.995"W	1.88	
2135.00	17.720	169.960	2110.82	-24.22	-207.42	22.71	40°14'35.230"N	104°54'20.929"W	0.72	
2228.00	19.040	168.800	2199.08	-29.85	-236.24	28.13	40°14'34.946"N	104°54'20.859"W	1.47	
2322.00	18.810	167.850	2288.00	-36.23	-266.09	34.30	40°14'34.651"N	104°54'20.780"W	0.41	
2416.00	19.740	167.100	2376.73	-43.19	-296.38	41.03	40°14'34.351"N	104°54'20.693"W	1.02	
2509.00	20.200	166.900	2464.13	-50.56	-327.33	48.18	40°14'34.045"N	104°54'20.601"W	0.50	
2602.00	19.790	168.350	2551.53	-57.60	-358.39	54.99	40°14'33.738"N	104°54'20.513"W	0.69	
2692.00	17.830	167.800	2636.72	-63.80	-386.78	60.98	40°14'33.458"N	104°54'20.436"W	2.19	
2782.00	17.730	169.200	2722.42	-69.47	-413.71	66.46	40°14'33.192"N	104°54'20.365"W	0.49	
2872.00	17.530	169.080	2808.19	-74.80	-440.48	71.60	40°14'32.927"N	104°54'20.299"W	0.23	
2962.00	17.190	169.290	2894.09	-80.03	-466.85	76.64	40°14'32.667"N	104°54'20.234"W	0.38	
3053.00	17.400	168.560	2980.98	-85.42	-493.40	81.84	40°14'32.404"N	104°54'20.167"W	0.33	
3143.00	17.850	167.050	3066.75	-91.38	-520.04	87.60	40°14'32.141"N	104°54'20.092"W	0.71	
3233.00	16.560	167.660	3152.72	-97.40	-546.01	93.43	40°14'31.884"N	104°54'20.017"W	1.45	
3323.00	16.630	166.870	3238.98	-103.25	-571.08	99.09	40°14'31.637"N	104°54'19.944"W	0.26	
3413.00	17.200	169.170	3325.08	-108.86	-596.69	104.52	40°14'31.384"N	104°54'19.874"W	0.98	
3503.00	17.180	167.280	3411.06	-114.48	-622.73	109.95	40°14'31.126"N	104°54'19.804"W	0.62	
3593.00	17.350	169.030	3497.01	-120.15	-648.87	115.43	40°14'30.868"N	104°54'19.734"W	0.61	
3683.00	17.950	168.870	3582.77	-125.57	-675.65	120.66	40°14'30.603"N	104°54'19.666"W	0.67	
3773.00	19.910	169.110	3667.90	-131.35	-704.31	126.23	40°14'30.320"N	104°54'19.594"W	2.18	
3953.00	20.220	170.300	3836.98	-142.83	-765.07	137.26	40°14'29.720"N	104°54'19.452"W	0.28	
4043.00	18.750	170.670	3921.82	-148.01	-794.67	142.23	40°14'29.427"N	104°54'19.388"W	1.64	
4223.00	16.480	170.280	4093.37	-157.40	-848.39	151.23	40°14'28.896"N	104°54'19.272"W	1.26	

Actual Wellpath Report

BERRY FARMS 32N-8HZ AWP

Page 3 of 6

REFERENCE WELLPATH IDENTIFICATION			
Operator	KERR-MCGEE OIL & GAS ONSHORE LP	Slot	SLOT#05 BERRY FARMS 32N-8HZ (1426'FNL & 300'FEL, SEC.08)
Area	COLORADO	Well	BERRY FARMS 32N-8HZ
Field	WELD COUNTY (KERR MCGEE)	Wellbore	BERRY FARMS 32N-8HZ AWP
Facility	SEC.08-T3N-R67W		

WELLPATH DATA (136 stations) † = interpolated/extrapolated station

MD [ft]	Inclination [°]	Azimuth [°]	TVD [ft]	Vert Sect [ft]	North [ft]	East [ft]	Latitude	Longitude	DLS [°/100ft]	Comments
4313.00	16.690	170.020	4179.62	-161.98	-873.70	155.63	40°14'28.646"N	104°54'19.215"W	0.25	
4403.00	17.820	169.880	4265.57	-166.83	-899.99	160.29	40°14'28.386"N	104°54'19.155"W	1.26	
4493.00	18.990	169.430	4350.97	-172.14	-927.94	165.39	40°14'28.110"N	104°54'19.089"W	1.31	
4673.00	16.590	171.000	4522.35	-181.93	-982.12	174.78	40°14'27.575"N	104°54'18.968"W	1.36	
4763.00	17.760	168.990	4608.33	-186.75	-1008.29	179.42	40°14'27.316"N	104°54'18.908"W	1.46	
4853.00	19.290	167.800	4693.67	-192.72	-1036.29	185.18	40°14'27.039"N	104°54'18.834"W	1.75	
5033.00	15.510	166.630	4865.40	-204.95	-1088.78	197.03	40°14'26.521"N	104°54'18.681"W	2.11	
5123.00	13.880	167.350	4952.45	-210.26	-1111.03	202.18	40°14'26.301"N	104°54'18.615"W	1.82	
5213.00	12.640	167.480	5040.05	-214.91	-1131.17	206.68	40°14'26.102"N	104°54'18.557"W	1.38	
5303.00	10.950	166.270	5128.15	-219.20	-1149.09	210.84	40°14'25.925"N	104°54'18.503"W	1.90	
5393.00	11.360	161.620	5216.45	-224.14	-1165.81	215.67	40°14'25.760"N	104°54'18.441"W	1.10	
5483.00	11.270	161.920	5304.70	-229.79	-1182.58	221.19	40°14'25.594"N	104°54'18.370"W	0.12	
5573.00	10.500	160.250	5393.08	-235.41	-1198.66	226.69	40°14'25.435"N	104°54'18.299"W	0.92	
5662.00	8.300	160.480	5480.88	-240.39	-1212.35	231.58	40°14'25.300"N	104°54'18.236"W	2.47	
5752.00	8.060	155.780	5569.97	-245.24	-1224.22	236.34	40°14'25.182"N	104°54'18.174"W	0.79	
5842.00	6.190	154.460	5659.27	-249.99	-1234.36	241.02	40°14'25.082"N	104°54'18.114"W	2.09	
5932.00	4.750	153.530	5748.86	-253.80	-1242.07	244.77	40°14'25.006"N	104°54'18.066"W	1.60	
6022.00	3.490	153.070	5838.62	-256.75	-1247.85	247.67	40°14'24.949"N	104°54'18.028"W	1.40	
6112.00	2.010	160.000	5928.52	-258.56	-1251.77	249.45	40°14'24.910"N	104°54'18.005"W	1.68	
6202.00	1.070	230.260	6018.49	-258.46	-1253.79	249.35	40°14'24.890"N	104°54'18.007"W	2.15	
6292.00	1.050	245.590	6108.47	-257.07	-1254.67	247.95	40°14'24.881"N	104°54'18.025"W	0.31	
6446.00	1.080	256.650	6262.45	-254.38	-1255.59	245.25	40°14'24.872"N	104°54'18.059"W	0.13	
6517.00	1.740	253.070	6333.42	-252.71	-1256.06	243.57	40°14'24.868"N	104°54'18.081"W	0.94	
6562.00	7.470	257.600	6378.26	-249.20	-1256.89	240.06	40°14'24.860"N	104°54'18.126"W	12.75	
6607.00	12.980	260.340	6422.53	-241.36	-1258.36	232.21	40°14'24.845"N	104°54'18.228"W	12.29	
6652.00	18.000	262.770	6465.88	-229.49	-1260.09	220.32	40°14'24.828"N	104°54'18.381"W	11.25	
6697.00	20.590	262.660	6508.35	-214.76	-1261.97	205.58	40°14'24.809"N	104°54'18.571"W	5.76	
6742.00	24.070	265.270	6549.97	-197.77	-1263.74	188.58	40°14'24.792"N	104°54'18.790"W	8.04	
6787.00	28.370	266.420	6590.33	-177.96	-1265.17	168.75	40°14'24.778"N	104°54'19.046"W	9.62	
6832.00	32.670	268.120	6629.09	-155.14	-1266.23	145.93	40°14'24.767"N	104°54'19.340"W	9.75	
6877.00	36.480	270.570	6666.13	-129.62	-1266.50	120.41	40°14'24.765"N	104°54'19.669"W	9.01	
6922.00	39.270	270.250	6701.65	-102.00	-1266.30	92.78	40°14'24.766"N	104°54'20.026"W	6.22	
6967.00	41.970	269.330	6735.81	-72.70	-1266.42	63.49	40°14'24.765"N	104°54'20.403"W	6.15	
7012.00	45.870	269.250	6768.21	-41.50	-1266.81	32.28	40°14'24.762"N	104°54'20.806"W	8.67	
7057.00	50.350	268.590	6798.25	-8.02	-1267.44	-1.20	40°14'24.755"N	104°54'21.237"W	10.02	
7102.00	54.580	268.300	6825.66	27.63	-1268.41	-36.86	40°14'24.746"N	104°54'21.697"W	9.41	
7147.00	59.340	267.640	6850.19	65.31	-1269.76	-74.55	40°14'24.732"N	104°54'22.183"W	10.65	
7192.00	63.850	266.590	6871.59	104.81	-1271.76	-114.07	40°14'24.713"N	104°54'22.693"W	10.23	
7237.00	68.490	266.670	6889.77	145.88	-1274.17	-155.15	40°14'24.689"N	104°54'23.223"W	10.31	
7282.00	73.470	268.280	6904.43	188.35	-1276.04	-197.64	40°14'24.670"N	104°54'23.771"W	11.57	
7327.00	78.030	269.080	6915.50	231.93	-1277.04	-241.23	40°14'24.660"N	104°54'24.333"W	10.28	
7372.00	79.020	269.380	6924.46	276.02	-1277.63	-285.33	40°14'24.655"N	104°54'24.901"W	2.29	
7417.00	82.810	270.230	6931.56	320.45	-1277.78	-329.76	40°14'24.653"N	104°54'25.474"W	8.63	
7459.00	85.710	271.470	6935.76	362.23	-1277.16	-371.54	40°14'24.659"N	104°54'26.013"W	7.50	
7512.00†	88.153	271.839	6938.60	415.14	-1275.63	-424.43	40°14'24.674"N	104°54'26.695"W	4.66	7" Casing Intermediate

Actual Wellpath Report

BERRY FARMS 32N-8HZ AWP

Page 4 of 6

REFERENCE WELLPATH IDENTIFICATION			
Operator	KERR-MCGEE OIL & GAS ONSHORE LP	Slot	SLOT#05 BERRY FARMS 32N-8HZ (1426'FNL & 300'FEL, SEC.08)
Area	COLORADO	Well	BERRY FARMS 32N-8HZ
Field	WELD COUNTY (KERR MCGEE)	Wellbore	BERRY FARMS 32N-8HZ AWP
Facility	SEC.08-T3N-R67W		

WELLPATH DATA (136 stations)

MD [ft]	Inclination [°]	Azimuth [°]	TVD [ft]	Vert Sect [ft]	North [ft]	East [ft]	Latitude	Longitude	DLS [°/100ft]	Comments
7574.00	91.010	272.270	6939.05	477.11	-1273.41	-486.39	40°14'24.696"N	104°54'27.494"W	4.66	
7664.00	92.220	272.530	6936.52	567.01	-1269.64	-576.27	40°14'24.733"N	104°54'28.653"W	1.38	
7754.00	91.820	272.560	6933.34	656.90	-1265.65	-666.12	40°14'24.773"N	104°54'29.812"W	0.45	
7841.00	91.630	273.290	6930.72	743.77	-1261.21	-752.97	40°14'24.817"N	104°54'30.932"W	0.87	
7931.00	91.380	271.800	6928.36	833.68	-1257.22	-842.85	40°14'24.856"N	104°54'32.090"W	1.68	
8021.00	90.400	271.440	6926.96	923.64	-1254.67	-932.80	40°14'24.881"N	104°54'33.250"W	1.16	
8111.00	89.010	271.880	6927.43	1013.62	-1252.07	-1022.76	40°14'24.907"N	104°54'34.410"W	1.62	
8201.00	88.850	272.060	6929.11	1103.57	-1248.97	-1112.69	40°14'24.938"N	104°54'35.570"W	0.27	
8291.00	89.280	272.330	6930.57	1193.52	-1245.53	-1202.61	40°14'24.972"N	104°54'36.730"W	0.56	
8381.00	90.830	272.750	6930.49	1283.45	-1241.54	-1292.52	40°14'25.011"N	104°54'37.889"W	1.78	
8471.00	90.360	271.790	6929.55	1373.40	-1237.97	-1382.44	40°14'25.046"N	104°54'39.049"W	1.19	
8561.00	90.490	271.080	6928.89	1463.38	-1235.72	-1472.41	40°14'25.068"N	104°54'40.209"W	0.80	
8651.00	91.530	270.730	6927.30	1553.36	-1234.30	-1562.39	40°14'25.082"N	104°54'41.369"W	1.22	
8741.00	91.170	270.160	6925.18	1643.34	-1233.60	-1652.36	40°14'25.089"N	104°54'42.529"W	0.75	
8831.00	91.350	268.890	6923.20	1733.30	-1234.35	-1742.33	40°14'25.082"N	104°54'43.689"W	1.42	
8921.00	90.030	269.190	6922.12	1823.27	-1235.85	-1832.31	40°14'25.067"N	104°54'44.850"W	1.50	
9011.00	88.640	269.470	6923.16	1913.24	-1236.91	-1922.30	40°14'25.056"N	104°54'46.010"W	1.58	
9101.00	88.880	269.700	6925.11	2003.21	-1237.56	-2012.27	40°14'25.050"N	104°54'47.170"W	0.37	
9191.00	89.000	270.060	6926.77	2093.19	-1237.75	-2102.26	40°14'25.048"N	104°54'48.330"W	0.42	
9281.00	89.100	270.330	6928.27	2183.18	-1237.44	-2192.24	40°14'25.051"N	104°54'49.491"W	0.32	
9371.00	89.260	270.620	6929.55	2273.17	-1236.69	-2282.23	40°14'25.058"N	104°54'50.651"W	0.37	
9550.00	89.500	270.920	6931.49	2452.16	-1234.29	-2461.20	40°14'25.082"N	104°54'52.959"W	0.21	
9731.00	88.920	270.310	6933.99	2633.14	-1232.34	-2642.17	40°14'25.101"N	104°54'55.293"W	0.47	
9821.00	88.980	269.890	6935.64	2723.12	-1232.19	-2732.16	40°14'25.102"N	104°54'56.453"W	0.47	
9910.00	89.500	270.190	6936.82	2812.11	-1232.13	-2821.15	40°14'25.103"N	104°54'57.601"W	0.67	
10000.00	89.470	270.820	6937.62	2902.10	-1231.33	-2911.14	40°14'25.110"N	104°54'58.761"W	0.70	
10180.00	88.520	270.500	6940.78	3082.07	-1229.26	-3091.10	40°14'25.131"N	104°55'01.082"W	0.56	
10270.00	89.440	270.920	6942.38	3172.06	-1228.14	-3181.08	40°14'25.142"N	104°55'02.242"W	1.12	
10360.00	91.170	271.610	6941.91	3262.04	-1226.16	-3271.05	40°14'25.161"N	104°55'03.402"W	2.07	
10450.00	90.060	272.070	6940.94	3352.01	-1223.27	-3361.00	40°14'25.190"N	104°55'04.562"W	1.34	
10540.00	90.490	271.510	6940.51	3441.98	-1220.46	-3450.95	40°14'25.217"N	104°55'05.722"W	0.78	
10630.00	88.640	271.050	6941.19	3531.96	-1218.45	-3540.92	40°14'25.237"N	104°55'06.882"W	2.12	
10720.00	89.010	269.910	6943.04	3621.94	-1217.69	-3630.90	40°14'25.244"N	104°55'08.042"W	1.33	
10810.00	90.520	270.320	6943.41	3711.94	-1217.51	-3720.90	40°14'25.246"N	104°55'09.203"W	1.74	
10900.00	88.790	269.080	6943.95	3801.92	-1217.98	-3810.89	40°14'25.241"N	104°55'10.363"W	2.36	
10990.00	90.000	269.270	6944.90	3891.89	-1219.28	-3900.87	40°14'25.228"N	104°55'11.524"W	1.36	
11080.00	89.220	268.640	6945.51	3981.86	-1220.92	-3990.85	40°14'25.212"N	104°55'12.684"W	1.11	
11170.00	89.840	269.010	6946.25	4071.82	-1222.77	-4080.83	40°14'25.193"N	104°55'13.844"W	0.80	
11260.00	88.580	269.160	6947.49	4161.79	-1224.20	-4170.81	40°14'25.179"N	104°55'15.004"W	1.41	
11350.00	89.160	270.090	6949.26	4251.76	-1224.79	-4260.79	40°14'25.173"N	104°55'16.165"W	1.22	
11440.00	88.240	270.660	6951.31	4341.74	-1224.20	-4350.76	40°14'25.179"N	104°55'17.325"W	1.20	
11530.00	87.410	270.230	6954.72	4431.67	-1223.50	-4440.69	40°14'25.186"N	104°55'18.485"W	1.04	
11620.00	88.440	271.030	6957.98	4521.61	-1222.52	-4530.63	40°14'25.195"N	104°55'19.644"W	1.45	
11710.00	89.220	271.220	6959.82	4611.58	-1220.75	-4620.59	40°14'25.212"N	104°55'20.804"W	0.89	
11819.00	90.460	271.440	6960.12	4720.57	-1218.22	-4729.56	40°14'25.237"N	104°55'22.209"W	1.16	Last BHI MWD+IFR Surveys

Actual Wellpath Report

BERRY FARMS 32N-8HZ AWP

Page 5 of 6

REFERENCE WELLPATH IDENTIFICATION			
Operator	KERR-MCGEE OIL & GAS ONSHORE LP	Slot	SLOT#05 BERRY FARMS 32N-8HZ (1426'FNL & 300'FEL, SEC.08)
Area	COLORADO	Well	BERRY FARMS 32N-8HZ
Field	WELD COUNTY (KERR MCGEE)	Wellbore	BERRY FARMS 32N-8HZ AWB
Facility	SEC.08-T3N-R67W		

WELLPATH DATA (136 stations)										
MD [ft]	Inclination [°]	Azimuth [°]	TVD [ft]	Vert Sect [ft]	North [ft]	East [ft]	Latitude	Longitude	DLS [°/100ft]	Comments
11887.00	90.460	271.440	6959.58	4788.55	-1216.51	-4797.53	40°14'25.254"N	104°55'23.086"W	0.00	Projection to Bit

HOLE & CASING SECTIONS - Ref Wellbore: BERRY FARMS 32N-8HZ AWB Ref Wellpath: BERRY FARMS 32N-8HZ AWP									
String/Diameter	Start MD [ft]	End MD [ft]	Interval [ft]	Start TVD [ft]	End TVD [ft]	Start N/S [ft]	Start E/W [ft]	End N/S [ft]	End E/W [ft]
13.5in Open Hole	13.00	830.00	817.00	13.00	829.98	0.00	0.00	0.13	-0.53
9.625in Casing Surface	13.00	820.00	807.00	13.00	819.98	0.00	0.00	0.15	-0.49
8.75in Open Hole	830.00	7522.00	6692.00	829.98	6938.88	0.13	-0.53	-1275.31	-434.42
7in Casing Intermediate	13.00	7512.00	7499.00	13.00	6938.60	0.00	0.00	-1275.63	-424.43
6.125in Open Hole	7522.00	11887.00	4365.00	6938.88	6959.58	-1275.31	-434.42	-1216.51	-4797.53

TARGETS									
Name	MD [ft]	TVD [ft]	North [ft]	East [ft]	Grid East [US ft]	Grid North [US ft]	Latitude	Longitude	Shape
SEC.08-T3N-R67W SECTION LINES		0.00	119.92	0.00	3165843.86	1332293.12	40°14'38.465"N	104°54'21.222"W	polygon
BERRY FARMS 32N-8HZ BHL ON PLAT (2600'FSL & 50'FWL, SEC.08) REV-1		6943.00	-1231.56	-4797.97	3161055.26	1330909.58	40°14'25.105"N	104°55'23.092"W	point
BERRY FARMS 32N-8HZ LAND BOX		7143.00	29.95	0.00	3165844.46	1332203.16	40°14'37.576"N	104°54'21.222"W	polygon

WELLPATH COMPOSITION - Ref Wellbore: BERRY FARMS 32N-8HZ AWB Ref Wellpath: BERRY FARMS 32N-8HZ AWP									
Start MD [ft]	End MD [ft]	Positional Uncertainty Model	Log Name/Comment				Wellbore		
13.00	743.00	Generic gyro - continuous (Standard)	MS ENERGY SERVICES GYRO SURVEY <113-743>				BERRY FARMS 32N-8HZ AWB		
743.00	7459.00	NaviTrak (IFR)	BHI MWD+IFR SURVEYS 8 3/4" HOLE <889-7459>				BERRY FARMS 32N-8HZ AWB		
7459.00	11819.00	NaviTrak (IFR)	BHI MWD+IFR SURVEYS 6 1/8" HOLE <7574-11819>				BERRY FARMS 32N-8HZ AWB		
11819.00	11887.00	Blind Drilling (std)	Projection to bit				BERRY FARMS 32N-8HZ AWB		

Actual Wellpath Report

BERRY FARMS 32N-8HZ AWP

Page 6 of 6

REFERENCE WELLPATH IDENTIFICATION			
Operator	KERR-MCGEE OIL & GAS ONSHORE LP	Slot	SLOT#05 BERRY FARMS 32N-8HZ (1426'FNL & 300'FEL, SEC.08)
Area	COLORADO	Well	BERRY FARMS 32N-8HZ
Field	WELD COUNTY (KERR MCGEE)	Wellbore	BERRY FARMS 32N-8HZ AWB
Facility	SEC.08-T3N-R67W		

WELLPATH COMMENTS				
MD [ft]	Inclination [°]	Azimuth [°]	TVD [ft]	Comment
13.00	0.000	156.010	13.00	Tie-On
113.00	0.330	156.010	113.00	Begin GYRO Surveys
743.00	0.430	259.410	742.99	Tie-Into GYRO Surveys
889.00	0.190	206.720	888.98	Begin BHI MWD+IFR Surveys
7512.00	88.153	271.839	6938.60	7" Casing Intermediate
11819.00	90.460	271.440	6960.12	Last BHI MWD+IFR Surveys
11887.00	90.460	271.440	6959.58	Projection to Bit