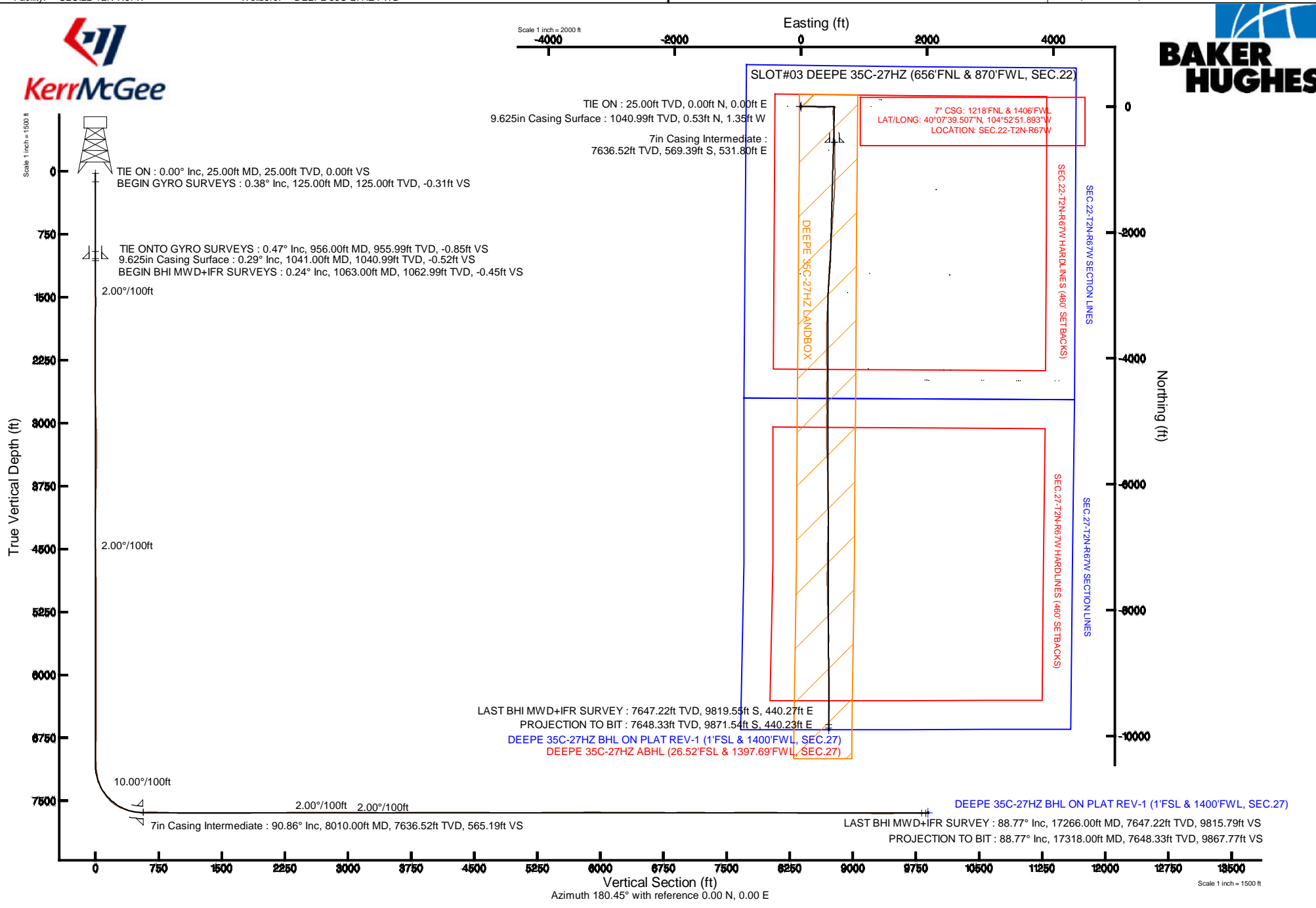


KERR-MCGEE OIL & GAS ONSHORE LP

Location: COLORADO Slot: SLOT#03 DEEPE 35C-27HZ (656'FNL & 870'FWL, SEC.22)
 Field: WELD COUNTY (KERR MCGEE) Well: DEEPE 35C-27HZ
 Facility: SEC.22-T2N-R67W Wellbore: DEEPE 35C-27HZ PWB

Plot reference wellpath is DEEPE 35C-27HZ (REV-B.1) PWP

True vertical depths are referenced to PRECISION 595 (25KB) (RKB)	Grid System: NAD83 / Lambert Colorado SP, Northern Zone (501), US feet
Measured depths are referenced to PRECISION 595 (25KB) (RKB)	North Reference: True north
PRECISION 595 (25KB) (RKB) to Mean Sea Level: 5032 feet	Scale: True distance
Mean Sea Level to Mud line (At Slot: SLOT#03 DEEPE 35C-27HZ (656'FNL & 870'FWL, SEC.22)): 0 feet	Depths are in feet
Coordinates are in feet referenced to Slot	Created by: robale01 on 20/May/2014



Actual Wellpath Report

DEEPE 35C-27HZ AWP

Page 1 of 7

REFERENCE WELLPATH IDENTIFICATION

Operator	KERR-MCGEE OIL & GAS ONSHORE LP	Slot	SLOT#03 DEEPE 35C-27HZ (656'FNL & 870'FWL, SEC.22)
Area	COLORADO	Well	DEEPE 35C-27HZ
Field	WELD COUNTY (KERR MCGEE)	Wellbore	DEEPE 35C-27HZ AWB
Facility	SEC.22-T2N-R67W		

REPORT SETUP INFORMATION

Projection System	NAD83 / Lambert Colorado SP, Northern Zone (501), US feet	Software System	WellArchitect® 4.0.0
North Reference	True	User	Robiale01
Scale	0.999959	Report Generated	20/May/2014 at 10:59
Convergence at slot	n/a	Database/Source file	WellArchitectDB/DEEPE_35C-27HZ_AWB.xml

WELLPATH LOCATION

	Local coordinates		Grid coordinates		Geographic coordinates	
	North[ft]	East[ft]	Easting[US ft]	Northing[US ft]	Latitude	Longitude
Slot Location	-108.25	-1240.49	3172530.63	1290513.02	40°07'45.134"N	104°52'58.739"W
Facility Reference Pt			3173770.27	1290629.95	40°07'46.204"N	104°52'42.769"W
Field Reference Pt			3197771.84	1268891.29	40°04'09.600"N	104°47'36.000"W

WELLPATH DATUM

Calculation method	Minimum curvature	PRECISION 595 (25'KB) (RKB) to Facility Vertical Datum	5032.00ft
Horizontal Reference Pt	Slot	PRECISION 595 (25'KB) (RKB) to Mean Sea Level	5032.00ft
Vertical Reference Pt	PRECISION 595 (25'KB) (RKB)	PRECISION 595 (25'KB) (RKB) to Mud Line at Slot (SLOT#03 DEEPE 35C-27HZ (656'FNL & 870'FWL, SEC.22))	5032.00ft
MD Reference Pt	PRECISION 595 (25'KB) (RKB)	Section Origin	N 0.00, E 0.00 ft
Field Vertical Reference	Mean Sea Level	Section Azimuth	177.45°

Actual Wellpath Report

DEEPE 35C-27HZ AWP

Page 2 of 7

REFERENCE WELLPATH IDENTIFICATION

Operator	KERR-MCGEE OIL & GAS ONSHORE LP	Slot	SLOT#03 DEEPE 35C-27HZ (656'FNL & 870'FWL, SEC.22)
Area	COLORADO	Well	DEEPE 35C-27HZ
Field	WELD COUNTY (KERR MCGEE)	Wellbore	DEEPE 35C-27HZ AWP
Facility	SEC.22-T2N-R67W		

WELLPATH DATA (181 stations) † = interpolated/extrapolated station

MD [ft]	Inclination [°]	Azimuth [°]	TVD [ft]	Vert Sect [ft]	North [ft]	East [ft]	Latitude	Longitude	DLS [°/100ft]	Comments
0.00†	0.000	22.520	0.00	0.00	0.00	0.00	40°07'45.134"N	104°52'58.739"W	0.00	
25.00	0.000	22.520	25.00	0.00	0.00	0.00	40°07'45.134"N	104°52'58.739"W	0.00	TIE ON
125.00	0.380	22.520	125.00	-0.30	0.31	0.13	40°07'45.137"N	104°52'58.737"W	0.38	BEGIN GYRO SURVEYS
225.00	0.050	63.350	225.00	-0.62	0.63	0.29	40°07'45.140"N	104°52'58.735"W	0.34	
325.00	0.270	4.440	325.00	-0.87	0.89	0.35	40°07'45.143"N	104°52'58.734"W	0.25	
425.00	0.110	176.570	425.00	-1.01	1.03	0.37	40°07'45.144"N	104°52'58.734"W	0.38	
525.00	0.080	341.870	525.00	-0.98	1.00	0.36	40°07'45.144"N	104°52'58.734"W	0.19	
625.00	0.220	236.300	625.00	-0.95	0.96	0.18	40°07'45.143"N	104°52'58.737"W	0.25	
725.00	0.060	36.960	725.00	-0.89	0.89	0.05	40°07'45.143"N	104°52'58.738"W	0.28	
825.00	0.280	289.770	825.00	-1.02	1.02	-0.15	40°07'45.144"N	104°52'58.741"W	0.30	
925.00	0.390	246.530	925.00	-0.99	0.96	-0.69	40°07'45.144"N	104°52'58.748"W	0.27	
956.00	0.470	238.290	955.99	-0.89	0.85	-0.90	40°07'45.142"N	104°52'58.751"W	0.33	TIE ONTO GYRO SURVEYS
1063.00	0.240	224.310	1062.99	-0.53	0.46	-1.43	40°07'45.139"N	104°52'58.757"W	0.23	BEGIN BHI MWD+IFR SURVEYS
1185.00	1.920	98.690	1184.97	0.05	-0.03	0.42	40°07'45.134"N	104°52'58.734"W	1.70	
1277.00	3.880	83.750	1276.85	0.15	0.08	5.03	40°07'45.135"N	104°52'58.674"W	2.27	
1369.00	5.640	85.740	1368.53	-0.19	0.75	12.64	40°07'45.141"N	104°52'58.576"W	1.92	
1461.00	6.840	86.630	1459.98	-0.40	1.41	22.61	40°07'45.148"N	104°52'58.448"W	1.31	
1554.00	8.430	89.590	1552.15	-0.23	1.78	34.96	40°07'45.152"N	104°52'58.289"W	1.76	
1646.00	9.610	83.560	1643.02	-0.49	2.69	49.34	40°07'45.161"N	104°52'58.104"W	1.64	
1738.00	9.790	86.570	1733.70	-1.13	4.02	64.77	40°07'45.174"N	104°52'57.905"W	0.58	
1830.00	10.970	86.880	1824.20	-1.34	4.97	81.32	40°07'45.183"N	104°52'57.692"W	1.28	
1922.00	10.330	93.060	1914.61	-0.62	5.00	98.30	40°07'45.183"N	104°52'57.473"W	1.42	
2044.00	9.960	89.620	2034.71	0.85	4.49	119.77	40°07'45.178"N	104°52'57.197"W	0.58	
2228.00	9.140	85.570	2216.16	0.98	5.72	150.26	40°07'45.191"N	104°52'56.805"W	0.58	
2319.00	9.070	89.860	2306.01	1.04	6.30	164.64	40°07'45.196"N	104°52'56.619"W	0.75	
2504.00	7.910	92.690	2488.98	2.82	5.74	191.93	40°07'45.191"N	104°52'56.268"W	0.67	
2689.00	9.030	102.360	2671.97	7.72	2.03	218.83	40°07'45.154"N	104°52'55.922"W	0.98	
2873.00	9.730	103.370	2853.51	15.70	-4.65	248.07	40°07'45.088"N	104°52'55.545"W	0.39	
3057.00	10.610	102.200	3034.62	24.28	-11.83	279.75	40°07'45.017"N	104°52'55.138"W	0.49	
3241.00	10.780	91.170	3215.44	29.71	-15.76	313.52	40°07'44.978"N	104°52'54.703"W	1.11	
3430.00	11.030	88.090	3401.03	31.06	-15.52	349.26	40°07'44.981"N	104°52'54.243"W	0.34	
3619.00	9.600	81.750	3586.98	29.70	-12.65	382.93	40°07'45.009"N	104°52'53.809"W	0.96	
3807.00	10.820	86.330	3772.00	27.80	-9.27	416.05	40°07'45.042"N	104°52'53.383"W	0.78	
3987.00	8.650	81.090	3949.40	25.97	-6.10	446.29	40°07'45.074"N	104°52'52.994"W	1.30	
4166.00	6.460	78.260	4126.83	22.88	-1.96	469.45	40°07'45.115"N	104°52'52.695"W	1.24	
4256.00	7.250	88.960	4216.19	22.22	-0.83	480.09	40°07'45.126"N	104°52'52.558"W	1.66	
4346.00	7.720	97.160	4305.43	23.39	-1.48	491.76	40°07'45.119"N	104°52'52.408"W	1.30	
4436.00	6.740	98.610	4394.71	25.43	-3.02	502.98	40°07'45.104"N	104°52'52.264"W	1.11	
4525.00	5.190	104.330	4483.23	27.61	-4.80	512.05	40°07'45.086"N	104°52'52.147"W	1.86	
4615.00	5.090	101.820	4572.87	29.78	-6.63	519.90	40°07'45.068"N	104°52'52.046"W	0.27	
4705.00	4.650	98.540	4662.54	31.48	-7.99	527.41	40°07'45.055"N	104°52'51.949"W	0.58	
4795.00	4.240	97.380	4752.27	32.75	-8.96	534.32	40°07'45.045"N	104°52'51.860"W	0.47	
4884.00	2.940	113.260	4841.10	34.31	-10.28	539.68	40°07'45.032"N	104°52'51.791"W	1.83	
4974.00	1.430	154.280	4931.03	36.35	-12.20	542.29	40°07'45.013"N	104°52'51.758"W	2.32	
5064.00	0.880	262.060	5021.02	37.45	-13.31	542.09	40°07'45.002"N	104°52'51.760"W	2.10	

Actual Wellpath Report

DEEPE 35C-27HZ AWP

Page 3 of 7

REFERENCE WELLPATH IDENTIFICATION

Operator	KERR-MCGEE OIL & GAS ONSHORE LP	Slot	SLOT#03 DEEPE 35C-27HZ (656'FNL & 870'FWL, SEC.22)
Area	COLORADO	Well	DEEPE 35C-27HZ
Field	WELD COUNTY (KERR MCGEE)	Wellbore	DEEPE 35C-27HZ AWP
Facility	SEC.22-T2N-R67W		

WELLPATH DATA (181 stations) † = interpolated/extrapolated station

MD [ft]	Inclination [°]	Azimuth [°]	TVD [ft]	Vert Sect [ft]	North [ft]	East [ft]	Latitude	Longitude	DLS [°/100ft]	Comments
5333.00	1.160	256.470	5289.98	38.16	-14.23	537.40	40°07'44.993"N	104°52'51.821"W	0.11	
5423.00	1.050	264.620	5379.96	38.37	-14.52	535.69	40°07'44.990"N	104°52'51.843"W	0.21	
5513.00	0.900	270.520	5469.95	38.38	-14.59	534.16	40°07'44.990"N	104°52'51.862"W	0.20	
5602.00	1.140	265.630	5558.94	38.37	-14.66	532.58	40°07'44.989"N	104°52'51.883"W	0.29	
5781.00	0.400	328.460	5737.92	37.88	-14.26	530.48	40°07'44.993"N	104°52'51.910"W	0.57	
5961.00	0.750	288.190	5917.91	36.91	-13.36	529.03	40°07'45.002"N	104°52'51.928"W	0.29	
6230.00	0.610	227.900	6186.90	37.20	-13.77	526.30	40°07'44.998"N	104°52'51.963"W	0.26	
6320.00	0.520	25.530	6276.89	37.14	-13.72	526.12	40°07'44.998"N	104°52'51.966"W	1.23	
6500.00	0.490	10.760	6456.89	35.67	-12.23	526.61	40°07'45.013"N	104°52'51.959"W	0.07	
6769.00	0.500	313.440	6725.88	33.71	-10.29	525.98	40°07'45.032"N	104°52'51.968"W	0.18	
7038.00	0.840	264.230	6994.86	32.98	-9.68	523.16	40°07'45.038"N	104°52'52.004"W	0.24	
7128.00	2.380	199.050	7084.83	34.75	-11.51	521.89	40°07'45.020"N	104°52'52.020"W	2.41	
7173.00	5.960	192.190	7129.70	37.88	-14.68	521.10	40°07'44.989"N	104°52'52.030"W	8.02	
7218.00	9.090	193.710	7174.31	43.55	-20.42	519.76	40°07'44.932"N	104°52'52.048"W	6.97	
7263.00	13.030	191.500	7218.47	51.89	-28.85	517.91	40°07'44.849"N	104°52'52.072"W	8.80	
7308.00	16.360	189.520	7261.99	63.01	-40.07	515.85	40°07'44.738"N	104°52'52.098"W	7.48	
7353.00	20.850	191.120	7304.63	77.00	-54.19	513.25	40°07'44.598"N	104°52'52.131"W	10.04	
7398.00	25.170	185.480	7346.04	94.27	-71.58	510.79	40°07'44.427"N	104°52'52.163"W	10.77	
7443.00	30.090	180.340	7385.90	115.02	-92.40	509.81	40°07'44.221"N	104°52'52.176"W	12.14	
7488.00	34.930	176.780	7423.84	139.19	-116.56	510.47	40°07'43.982"N	104°52'52.167"W	11.56	
7532.00	39.690	174.420	7458.83	165.83	-143.14	512.54	40°07'43.719"N	104°52'52.141"W	11.29	
7577.00	44.890	174.620	7492.11	196.06	-173.27	515.43	40°07'43.422"N	104°52'52.103"W	11.56	
7622.00	51.020	177.610	7522.23	229.45	-206.59	517.65	40°07'43.092"N	104°52'52.075"W	14.49	
7667.00	56.850	175.830	7548.72	265.80	-242.89	519.75	40°07'42.734"N	104°52'52.048"W	13.34	
7712.00	62.510	176.260	7571.42	304.62	-281.62	522.43	40°07'42.351"N	104°52'52.013"W	12.60	
7757.00	67.620	177.110	7590.39	345.41	-322.35	524.78	40°07'41.948"N	104°52'51.983"W	11.48	
7802.00	71.870	177.130	7605.97	387.61	-364.50	526.90	40°07'41.532"N	104°52'51.956"W	9.44	
7847.00	76.700	178.240	7618.15	430.92	-407.77	528.64	40°07'41.104"N	104°52'51.933"W	10.99	
7892.00	82.030	178.850	7626.45	475.12	-451.97	529.76	40°07'40.668"N	104°52'51.919"W	11.92	
7937.00	83.090	178.820	7632.28	519.73	-496.58	530.67	40°07'40.227"N	104°52'51.907"W	2.36	
7978.00	86.830	179.230	7635.88	560.55	-537.41	531.37	40°07'39.823"N	104°52'51.898"W	9.18	
8010.00†	90.864	179.230	7636.52	592.52	-569.39	531.80	40°07'39.507"N	104°52'51.893"W	12.61	7" CASING POINT
8011.00	90.990	179.230	7636.51	593.52	-570.39	531.81	40°07'39.497"N	104°52'51.893"W	12.61	
8072.00	91.400	179.180	7635.24	654.48	-631.37	532.65	40°07'38.895"N	104°52'51.882"W	0.68	
8161.00	88.430	179.130	7635.37	743.43	-720.35	533.97	40°07'38.015"N	104°52'51.865"W	3.34	
8251.00	88.060	179.190	7638.12	833.34	-810.30	535.29	40°07'37.126"N	104°52'51.848"W	0.42	
8341.00	87.390	179.270	7641.70	923.23	-900.22	536.49	40°07'36.238"N	104°52'51.832"W	0.75	
8431.00	87.330	178.940	7645.84	1013.09	-990.11	537.90	40°07'35.350"N	104°52'51.814"W	0.37	
8520.00	88.890	180.960	7648.78	1101.95	-1079.06	537.98	40°07'34.471"N	104°52'51.813"W	2.87	
8610.00	89.850	181.790	7649.77	1191.74	-1169.02	535.82	40°07'33.582"N	104°52'51.841"W	1.41	
8700.00	90.030	182.060	7649.86	1281.46	-1258.97	532.79	40°07'32.693"N	104°52'51.880"W	0.36	
8790.00	89.510	181.760	7650.22	1371.19	-1348.92	529.79	40°07'31.804"N	104°52'51.919"W	0.67	
8879.00	90.710	183.900	7650.05	1459.79	-1437.81	525.40	40°07'30.925"N	104°52'51.975"W	2.76	
8969.00	90.740	183.780	7648.91	1549.22	-1527.60	519.37	40°07'30.038"N	104°52'52.053"W	0.14	
9059.00	90.710	183.720	7647.77	1638.67	-1617.40	513.49	40°07'29.151"N	104°52'52.129"W	0.07	

Actual Wellpath Report

DEEPE 35C-27HZ AWP

Page 4 of 7

REFERENCE WELLPATH IDENTIFICATION

Operator	KERR-MCGEE OIL & GAS ONSHORE LP	Slot	SLOT#03 DEEPE 35C-27HZ (656'FNL & 870'FWL, SEC.22)
Area	COLORADO	Well	DEEPE 35C-27HZ
Field	WELD COUNTY (KERR MCGEE)	Wellbore	DEEPE 35C-27HZ AWP
Facility	SEC.22-T2N-R67W		

WELLPATH DATA (181 stations)

MD [ft]	Inclination [°]	Azimuth [°]	TVD [ft]	Vert Sect [ft]	North [ft]	East [ft]	Latitude	Longitude	DLS [°/100ft]	Comments
9148.00	90.620	183.560	7646.74	1727.14	-1706.21	507.84	40°07'28.273"N	104°52'52.202"W	0.21	
9238.00	90.310	184.190	7646.01	1816.57	-1796.00	501.76	40°07'27.386"N	104°52'52.280"W	0.78	
9328.00	91.080	183.910	7644.92	1905.97	-1885.77	495.40	40°07'26.499"N	104°52'52.362"W	0.91	
9422.00	90.860	183.480	7643.33	1999.40	-1979.56	489.34	40°07'25.572"N	104°52'52.440"W	0.51	
9517.00	90.650	183.670	7642.08	2093.85	-2074.37	483.42	40°07'24.635"N	104°52'52.516"W	0.30	
9611.00	90.180	183.320	7641.40	2187.32	-2168.19	477.69	40°07'23.708"N	104°52'52.590"W	0.62	
9706.00	90.770	182.700	7640.61	2281.87	-2263.06	472.70	40°07'22.770"N	104°52'52.654"W	0.90	
9800.00	91.210	185.050	7638.98	2375.26	-2356.82	466.35	40°07'21.844"N	104°52'52.736"W	2.54	
9894.00	90.560	184.780	7637.53	2468.45	-2450.46	458.30	40°07'20.918"N	104°52'52.840"W	0.75	
9989.00	90.500	183.650	7636.65	2562.78	-2545.20	451.31	40°07'19.982"N	104°52'52.929"W	1.19	
10083.00	89.100	182.690	7636.98	2656.31	-2639.05	446.12	40°07'19.055"N	104°52'52.996"W	1.81	
10177.00	88.610	181.890	7638.86	2749.95	-2732.96	442.36	40°07'18.127"N	104°52'53.045"W	1.00	
10272.00	90.370	183.470	7639.71	2844.55	-2827.84	437.92	40°07'17.189"N	104°52'53.102"W	2.49	
10364.00	89.720	182.110	7639.63	2936.14	-2919.73	433.44	40°07'16.281"N	104°52'53.160"W	1.64	
10456.00	89.970	182.820	7639.88	3027.79	-3011.65	429.49	40°07'15.373"N	104°52'53.211"W	0.82	
10548.00	89.690	181.970	7640.15	3119.45	-3103.56	425.64	40°07'14.464"N	104°52'53.260"W	0.97	
10640.00	90.590	183.080	7639.93	3211.08	-3195.47	421.59	40°07'13.556"N	104°52'53.312"W	1.55	
10732.00	89.540	183.240	7639.83	3302.62	-3287.33	416.52	40°07'12.648"N	104°52'53.378"W	1.15	
10824.00	89.260	181.780	7640.79	3394.26	-3379.23	412.49	40°07'11.740"N	104°52'53.429"W	1.62	
10916.00	89.970	181.070	7641.41	3486.03	-3471.20	410.20	40°07'10.831"N	104°52'53.459"W	1.09	
11009.00	91.090	181.040	7640.55	3578.84	-3564.18	408.49	40°07'09.912"N	104°52'53.481"W	1.20	
11100.00	90.160	180.590	7639.55	3669.68	-3655.17	407.19	40°07'09.013"N	104°52'53.498"W	1.14	
11193.00	90.650	179.670	7638.90	3762.57	-3748.16	406.98	40°07'08.094"N	104°52'53.500"W	1.12	
11284.00	89.230	179.100	7638.99	3853.52	-3839.15	407.96	40°07'07.195"N	104°52'53.488"W	1.68	
11376.00	90.090	179.760	7639.54	3945.46	-3931.15	408.87	40°07'06.286"N	104°52'53.476"W	1.18	
11467.00	90.930	179.550	7638.73	4036.39	-4022.14	409.42	40°07'05.387"N	104°52'53.469"W	0.95	
11560.00	89.570	177.940	7638.32	4129.36	-4115.11	411.46	40°07'04.468"N	104°52'53.443"W	2.27	
11655.00	89.820	180.110	7638.83	4224.31	-4210.09	413.08	40°07'03.529"N	104°52'53.422"W	2.30	
11749.00	90.680	180.800	7638.42	4318.18	-4304.09	412.33	40°07'02.601"N	104°52'53.432"W	1.17	
11843.00	89.720	181.230	7638.09	4412.00	-4398.07	410.66	40°07'01.672"N	104°52'53.453"W	1.12	
11938.00	89.510	180.700	7638.73	4506.82	-4493.05	409.06	40°07'00.733"N	104°52'53.474"W	0.60	
12032.00	90.000	180.350	7639.13	4600.68	-4587.05	408.20	40°06'59.804"N	104°52'53.485"W	0.64	
12127.00	88.740	178.750	7640.17	4695.60	-4682.03	408.95	40°06'58.866"N	104°52'53.475"W	2.14	
12217.00	89.100	178.800	7641.87	4785.56	-4772.00	410.87	40°06'57.977"N	104°52'53.450"W	0.40	
12307.00	90.280	180.170	7642.36	4875.50	-4861.99	411.68	40°06'57.087"N	104°52'53.440"W	2.01	
12396.00	89.630	181.550	7642.43	4964.34	-4950.98	410.35	40°06'56.208"N	104°52'53.457"W	1.71	
12486.00	90.090	180.050	7642.65	5054.18	-5040.96	409.09	40°06'55.319"N	104°52'53.473"W	1.74	
12575.00	90.680	180.040	7642.05	5143.09	-5129.96	409.02	40°06'54.439"N	104°52'53.474"W	0.66	
12665.00	90.400	180.230	7641.20	5232.99	-5219.96	408.81	40°06'53.550"N	104°52'53.477"W	0.38	
12755.00	90.430	179.560	7640.55	5322.90	-5309.95	408.97	40°06'52.660"N	104°52'53.475"W	0.75	
12845.00	90.400	178.840	7639.90	5412.86	-5399.94	410.23	40°06'51.771"N	104°52'53.459"W	0.80	
12934.00	90.150	177.220	7639.47	5501.85	-5488.89	413.29	40°06'50.892"N	104°52'53.420"W	1.84	
13024.00	89.720	177.460	7639.57	5591.85	-5578.79	417.46	40°06'50.004"N	104°52'53.366"W	0.55	
13114.00	91.320	178.390	7638.76	5681.84	-5668.72	420.72	40°06'49.115"N	104°52'53.324"W	2.06	
13204.00	91.480	177.860	7636.56	5771.80	-5758.65	423.67	40°06'48.226"N	104°52'53.286"W	0.61	

REFERENCE WELLPATH IDENTIFICATION			
Operator	KERR-MCGEE OIL & GAS ONSHORE LP	Slot	SLOT#03 DEEPE 35C-27HZ (656'FNL & 870'FWL, SEC.22)
Area	COLORADO	Well	DEEPE 35C-27HZ
Field	WELD COUNTY (KERR MCGEE)	Wellbore	DEEPE 35C-27HZ AWP
Facility	SEC.22-T2N-R67W		

WELLPATH DATA (181 stations)

MD [ft]	Inclination [°]	Azimuth [°]	TVD [ft]	Vert Sect [ft]	North [ft]	East [ft]	Latitude	Longitude	DLS [°/100ft]	Comments
13293.00	90.370	179.350	7635.12	5860.77	-5847.60	425.83	40°06'47.347"N	104°52'53.258"W	2.09	
13383.00	89.750	178.850	7635.03	5950.73	-5937.59	427.25	40°06'46.458"N	104°52'53.240"W	0.88	
13473.00	89.380	178.260	7635.71	6040.71	-6027.56	429.52	40°06'45.569"N	104°52'53.211"W	0.77	
13563.00	89.450	179.030	7636.63	6130.69	-6117.53	431.64	40°06'44.680"N	104°52'53.183"W	0.86	
13652.00	90.120	180.620	7636.96	6219.61	-6206.53	431.92	40°06'43.800"N	104°52'53.180"W	1.94	
13742.00	88.580	179.210	7637.98	6309.51	-6296.52	432.05	40°06'42.911"N	104°52'53.178"W	2.32	
13832.00	89.040	179.500	7639.85	6399.44	-6386.49	433.06	40°06'42.022"N	104°52'53.165"W	0.60	
13922.00	90.090	180.570	7640.54	6489.35	-6476.48	433.01	40°06'41.133"N	104°52'53.166"W	1.67	
14011.00	90.090	180.100	7640.40	6578.23	-6565.48	432.49	40°06'40.253"N	104°52'53.173"W	0.53	
14101.00	90.400	180.900	7640.01	6668.10	-6655.48	431.70	40°06'39.364"N	104°52'53.183"W	0.95	
14190.00	89.170	180.700	7640.35	6756.95	-6744.47	430.46	40°06'38.484"N	104°52'53.199"W	1.40	
14280.00	90.000	182.600	7641.00	6846.70	-6834.42	427.87	40°06'37.595"N	104°52'53.232"W	2.30	
14369.00	91.020	181.310	7640.20	6935.42	-6923.36	424.83	40°06'36.716"N	104°52'53.271"W	1.85	
14459.00	90.340	181.540	7639.14	7025.19	-7013.33	422.59	40°06'35.827"N	104°52'53.300"W	0.80	
14549.00	89.780	180.070	7639.04	7115.04	-7103.32	421.33	40°06'34.938"N	104°52'53.316"W	1.75	
14639.00	89.070	180.730	7639.95	7204.91	-7193.31	420.70	40°06'34.049"N	104°52'53.324"W	1.08	
14729.00	89.940	181.200	7640.72	7294.74	-7283.29	419.19	40°06'33.160"N	104°52'53.344"W	1.10	
14819.00	90.150	180.180	7640.65	7384.59	-7373.28	418.10	40°06'32.270"N	104°52'53.358"W	1.16	
14908.00	89.780	180.640	7640.71	7473.47	-7462.28	417.46	40°06'31.391"N	104°52'53.366"W	0.66	
14998.00	90.160	179.370	7640.75	7563.38	-7552.28	417.46	40°06'30.501"N	104°52'53.366"W	1.47	
15088.00	91.080	179.460	7639.78	7653.32	-7642.27	418.38	40°06'29.612"N	104°52'53.355"W	1.03	
15178.00	90.030	178.460	7638.91	7743.28	-7732.25	420.01	40°06'28.723"N	104°52'53.334"W	1.61	
15268.00	90.460	178.810	7638.52	7833.26	-7822.22	422.15	40°06'27.834"N	104°52'53.306"W	0.62	
15357.00	89.690	178.510	7638.41	7922.24	-7911.20	424.23	40°06'26.955"N	104°52'53.279"W	0.93	
15447.00	89.850	178.360	7638.77	8012.23	-8001.16	426.69	40°06'26.066"N	104°52'53.248"W	0.24	
15537.00	88.670	178.170	7639.93	8102.21	-8091.11	429.42	40°06'25.177"N	104°52'53.213"W	1.33	
15627.00	88.650	178.080	7642.04	8192.18	-8181.04	432.36	40°06'24.288"N	104°52'53.175"W	0.10	
15716.00	88.800	178.140	7644.02	8281.15	-8269.97	435.30	40°06'23.409"N	104°52'53.137"W	0.18	
15806.00	88.860	179.050	7645.85	8371.11	-8359.92	437.50	40°06'22.520"N	104°52'53.109"W	1.01	
15896.00	89.630	179.960	7647.04	8461.04	-8449.91	438.28	40°06'21.631"N	104°52'53.099"W	1.32	
15986.00	89.350	181.150	7647.84	8550.91	-8539.90	437.41	40°06'20.742"N	104°52'53.110"W	1.36	
16076.00	89.910	180.060	7648.42	8640.77	-8629.89	436.46	40°06'19.852"N	104°52'53.122"W	1.36	
16165.00	90.650	179.340	7647.99	8729.69	-8718.89	436.92	40°06'18.973"N	104°52'53.116"W	1.16	
16255.00	89.410	178.320	7647.94	8819.67	-8808.86	438.76	40°06'18.084"N	104°52'53.092"W	1.78	
16345.00	89.780	178.530	7648.58	8909.65	-8898.83	441.23	40°06'17.195"N	104°52'53.061"W	0.47	
16435.00	89.200	178.760	7649.38	8999.63	-8988.80	443.36	40°06'16.306"N	104°52'53.033"W	0.69	
16524.00	90.280	178.510	7649.78	9088.60	-9077.77	445.48	40°06'15.426"N	104°52'53.006"W	1.25	
16614.00	89.850	178.880	7649.68	9178.58	-9167.75	447.53	40°06'14.537"N	104°52'52.980"W	0.63	
16704.00	88.300	179.470	7651.13	9268.53	-9257.72	448.83	40°06'13.648"N	104°52'52.963"W	1.84	
16794.00	90.000	180.110	7652.47	9358.44	-9347.71	449.16	40°06'12.759"N	104°52'52.959"W	2.02	
16884.00	91.200	181.100	7651.52	9448.29	-9437.70	448.21	40°06'11.870"N	104°52'52.971"W	1.73	
16974.00	91.230	181.610	7649.62	9538.06	-9527.65	446.08	40°06'10.981"N	104°52'52.998"W	0.57	
17064.00	90.960	181.320	7647.90	9627.83	-9617.60	443.78	40°06'10.092"N	104°52'53.028"W	0.44	
17153.00	90.650	181.380	7646.65	9716.61	-9706.57	441.68	40°06'09.212"N	104°52'53.055"W	0.35	
17266.00	88.770	180.050	7647.22	9829.42	-9819.55	440.27	40°06'08.096"N	104°52'53.073"W	2.04	LAST BHI MWD+IFR SURVEY

Actual Wellpath Report

DEEPE 35C-27HZ AWP

Page 6 of 7

REFERENCE WELLPATH IDENTIFICATION

Operator	KERR-MCGEE OIL & GAS ONSHORE LP	Slot	SLOT#03 DEEPE 35C-27HZ (656'FNL & 870'FWL, SEC.22)
Area	COLORADO	Well	DEEPE 35C-27HZ
Field	WELD COUNTY (KERR MCGEE)	Wellbore	DEEPE 35C-27HZ AWB
Facility	SEC.22-T2N-R67W		

WELLPATH DATA (181 stations)

MD [ft]	Inclination [°]	Azimuth [°]	TVD [ft]	Vert Sect [ft]	North [ft]	East [ft]	Latitude	Longitude	DLS [°/100ft]	Comments
17318.00	88.770	180.050	7648.33	9881.35	-9871.54	440.23	40°06'07.582"N	104°52'53.074"W	0.00	PROJECTION TO BIT

HOLE & CASING SECTIONS - Ref Wellbore: DEEPE 35C-27HZ AWB Ref Wellpath: DEEPE 35C-27HZ AWP

String/Diameter	Start MD [ft]	End MD [ft]	Interval [ft]	Start TVD [ft]	End TVD [ft]	Start N/S [ft]	Start E/W [ft]	End N/S [ft]	End E/W [ft]
13.5in Open Hole	25.00	1052.00	1027.00	25.00	1051.99	0.00	0.00	0.50	-1.39
9.625in Casing Surface	25.00	1041.00	1016.00	25.00	1040.99	0.00	0.00	0.53	-1.35
8.75in Open Hole	1052.00	8020.00	6968.00	1051.99	7636.35	0.50	-1.39	-579.39	531.93
7in Casing Intermediate	25.00	8010.00	7985.00	25.00	7636.52	0.00	0.00	-569.39	531.80
6.125in Open Hole	8020.00	17318.00	9298.00	7636.35	7648.33	-579.39	531.93	-9871.54	440.23

WELLPATH COMPOSITION - Ref Wellbore: DEEPE 35C-27HZ AWB Ref Wellpath: DEEPE 35C-27HZ AWP

Start MD [ft]	End MD [ft]	Positional Uncertainty Model	Log Name/Comment	Wellbore
25.00	956.00	Generic gyro - continuous (Standard)	MS ENERGY GYRO SURVEYS <125-956>	DEEPE 35C-27HZ AWB
956.00	7978.00	NaviTrak (MAGCORR,IFR)	BHI NAVITRAK MWD+IFR 8 3/4" <1063-7978>	DEEPE 35C-27HZ AWB
7978.00	17266.00	NaviTrak (MAGCORR,IFR)	BHI NAVITRAK MWD+IFR 6 1/8" <8011-17266>	DEEPE 35C-27HZ AWB
17266.00	17318.00	Blind Drilling (std)	Projection to bit	DEEPE 35C-27HZ AWB

Actual Wellpath Report

DEEPE 35C-27HZ AWP

Page 7 of 7

REFERENCE WELLPATH IDENTIFICATION			
Operator	KERR-MCGEE OIL & GAS ONSHORE LP	Slot	SLOT#03 DEEPE 35C-27HZ (656'FNL & 870'FWL, SEC.22)
Area	COLORADO	Well	DEEPE 35C-27HZ
Field	WELD COUNTY (KERR MCGEE)	Wellbore	DEEPE 35C-27HZ AWB
Facility	SEC.22-T2N-R67W		

WELLPATH COMMENTS				
MD [ft]	Inclination [°]	Azimuth [°]	TVD [ft]	Comment
25.00	0.000	22.520	25.00	TIE ON
125.00	0.380	22.520	125.00	BEGIN GYRO SURVEYS
956.00	0.470	238.290	955.99	TIE ONTO GYRO SURVEYS
1063.00	0.240	224.310	1062.99	BEGIN BHI MWD+IFR SURVEYS
8010.00	90.864	179.230	7636.52	7" CASING POINT
17266.00	88.770	180.050	7647.22	LAST BHI MWD+IFR SURVEY
17318.00	88.770	180.050	7648.33	PROJECTION TO BIT