

WPX ENERGY ROCKY MOUNTAIN LLC-EBUS

RG 511-14-298

Cyclone 29

Post Job Summary
Cement Production Casing

Date Prepared: 03/3/2014
Version: 1

Service Supervisor: Smith, Christopher

Submitted by: Grand Junction Engineering

The Road to Excellence Starts with Safety

Sold To #: 300721		Ship To #: 3124401		Quote #:		Sales Order #: 901137038	
Customer: WPX ENERGY ROCKY MOUNTAIN LLC-EBUS				Customer Rep: Ragsdale, Ted			
Well Name: RG		Well #: 511-14-298		API/UWI #: 05-103-11809			
Field:		City (SAP): MEEKER		County/Parish: Rio Blanco		State: Colorado	
Contractor: CYCLONE 29		Rig/Platform Name/Num: 29					
Job Purpose: Cement Multiple Stages							
Well Type: Development Well				Job Type: Cement Multiple Stages			
Sales Person: MAYO, MARK		Srvc Supervisor: MILLER, KEVIN		MBU ID Emp #: 443040			
Job Personnel							
HES Emp Name	Exp Hrs	Emp #	HES Emp Name	Exp Hrs	Emp #	HES Emp Name	Exp Hrs
HYDE, DUSTIN C	14.5	453940	MILLER, KEVIN Paul	14.5	443040	SINCLAIR, DAN J	14.5
WILSON, BENJAMIN Wallace	14.5	533647	DAVID LIDE	14.5	547540	RAMON SOMOZA	14.5
Equipment							
HES Unit #	Distance-1 way	HES Unit #	Distance-1 way	HES Unit #	Distance-1 way	HES Unit #	Distance-1 way
10565341	60 mile	10867531	60 mile	10989685	60 mile	10995027	60 mile
Job Hours							
Date	On Location Hours	Operating Hours	Date	On Location Hours	Operating Hours	Date	On Location Hours
2/23/14	8	4					
TOTAL		Total is the sum of each column separately					
Job				Job Times			
Formation Name				Date		Time	
Formation Depth (MD) Top		Bottom		Called Out		22 - Feb - 2014 17:30	
Form Type		BHST		On Location		22 - Feb - 2014 23:00	
Job depth MD 3056. ft		Job Depth TVD 3056. ft		Job Started		23 - Feb - 2014 03:57	
Water Depth		Wk Ht Above Floor 4. ft		Job Completed			
Perforation Depth (MD) From		To		Departed Loc			
Well Data							
Description	New / Used	Max pressure psig	Size in	ID in	Weight lbm/ft	Thread	Grade
OPEN HOLE				13.5			1205.
OPEN HOLE				14.75			1205.
SURFACE PIPE	New		9.625	8.921	36.	J-55	3060.8
Tools and Accessories							
Type	Size	Qty	Make	Depth	Type	Size	Qty
Guide Shoe					Packer		
Float Shoe	9.625	1	WEA		Bridge Plug		
Float Collar	9.625	1	WEA		Retainer		
Insert Float							
Stage Tool	9.625	1	WEA	1258			
Miscellaneous Materials							
Gelling Agt		Conc		Surfactant		Conc	
Treatment Fld		Conc		Inhibitor		Conc	
Fluid Data							
Stage/Plug #: 1							
Fluid #	Stage Type	Fluid Name			Qty	Qty uom	Mixing Density lbm/gal
							Yield ft3/sk
							Mix Fluid Gal/sk
							Rate bbl/min
							Total Mix Fluid Gal/sk

Stage/Plug #: 1

Stage/Plug #: 1									
Fluid #	Stage Type	Fluid Name	Qty	Qty uom	Mixing Density lbm/gal	Yield ft ³ /sk	Mix Fluid Gal/sk	Rate bbl/min	Total Mix Fluid Gal/sk
1	Fresh Water Spacer		40.00	bbl	8.33	.0	.0	.0	
2	1st Stage HLC Lead Cement	ECONOCER (TM) SYSTEM (452992)	780.0	sacks	12.8	1.77	9.34		9.34
	0.25 lbm	POLY-E-FLAKE (101216940)							
	0.35 %	HR-5, 50 LB SK (100005050)							
	9.34 Gal	FRESH WATER							
3	1st Stage Varicem Tail Cement	VARICEM (TM) CEMENT (452009)	325.0	sacks	12.8	1.96	10.95		10.95
	0.25 lbm	POLY-E-FLAKE (101216940)							
	10.95 Gal	FRESH WATER							
4	Displacement		235.00	bbl	8.33	.0	.0	.0	
5	Fresh Water Spacer		20.00	bbl	8.33	.0	.0	.0	
6	2nd Stage VariCem Cement	VARICEM (TM) CEMENT (452009)	765.0	sacks	12.8	1.96	10.95		10.95
	0.25 lbm	POLY-E-FLAKE (101216940)							
	10.95 Gal	FRESH WATER							
7	Displacement		97.00	bbl	8.33	.0	.0	.0	
Calculated Values		Pressures		Volumes					
Displacement		Shut In: Instant		Lost Returns		Cement Slurry		Pad	
Top Of Cement		5 Min		Cement Returns		Actual Displacement		Treatment	
Frac Gradient		15 Min		Spacers		Load and Breakdown		Total Job	
Rates									
Circulating	12	Mixing	6	Displacement	10	Avg. Job	6		
Cement Left In Pipe	Amount	26.6 ft	Reason	Shoe Joint					
Frac Ring # 1 @	ID	Frac ring # 2 @	ID	Frac Ring # 3 @	ID	Frac Ring # 4 @	ID		
The Information Stated Herein Is Correct				Customer Representative Signature					

The Road to Excellence Starts with Safety

Sold To #: 300721	Ship To #: 3124401	Quote #:	Sales Order #: 901137038
Customer: WPX ENERGY ROCKY MOUNTAIN LLC-EBUS	Customer Rep: Ragsdale, Ted		
Well Name: RG	Well #: 511-14-298	API/UWI #: 05-103-11809	
Field:	City (SAP): MEEKER	County/Parish: Rio Blanco	State: Colorado
Legal Description:			
Lat: N 0 deg. OR N 0 deg. 0 min. 0 secs.		Long: E 0 deg. OR E 0 deg. 0 min. 0 secs.	
Contractor: CYCLONE 29	Rig/Platform Name/Num: 29		
Job Purpose: Cement Multiple Stages	Ticket Amount:		
Well Type: Development Well	Job Type: Cement Multiple Stages		
Sales Person: MAYO, MARK	Srvc Supervisor: MILLER, KEVIN	MBU ID Emp #: 443040	

Activity Description	Date/Time	Cht #	Rate bbl/ min	Volume bbl		Pressure psig		Comments
				Stage	Total	Tubing	Casing	
Call Out	02/22/2014 17:30							
Pre-Convoy Safety Meeting	02/22/2014 20:00							ALL HES PERSONEL
Depart from Service Center or Other Site	02/22/2014 20:10							
Arrive At Loc	02/22/2014 23:00							RIG WAS STILL RUNNING CASING UPON HES ARRIVAL
Pre-Rig Up Safety Meeting	02/23/2014 00:10							ALL HES PERSONEL
Rig-Up Equipment	02/23/2014 01:10							2 SILOS, 1 ELITE, 1 F250, 1 660 BULK TRUCK
Rig-Up Completed	02/23/2014 02:45							
Pre-Job Safety Meeting	02/23/2014 03:30							ALL HES AND RIG PERSONEL
Start Job	02/23/2014 03:57							TD 3056', TP 3060.77', SJ 26.67', CSG 9.625" 36#, OH 13.5" 1205' TO TD, 14.75" 1205'- 0', MUD 10#,
Other	02/23/2014 03:59							PRIME LINES
Pressure Test	02/23/2014 04:01							KICKOUT FUNCTION TEST, 7TH GEAR STALL OUT, PSI TEST AT 3500
Pump Spacer 1	02/23/2014 04:09		4	40			205.0	FRESH WATER, GOT RETURNS AT 4 BBLS AWAY
Pump 1st Stage Lead Slurry	02/23/2014 04:22		7	245.9			350.0	780 SKS, 12.8 PPG, 1.77 FT3/SK, 9.34 GAL/SK, 10 BOXES OF TOUGH FIBER THROUGHOUT LEAD

Activity Description	Date/Time	Cht #	Rate bbl/min	Volume bbl		Pressure psig		Comments
				Stage	Total	Tubing	Casing	
Pump 1st Stage Tail Slurry	02/23/2014 05:03		6	113.4 4			370.0	325 SKS, 12.8 PPG, 1.96 FT3/SK, 10.95 GAL/SK
Shutdown	02/23/2014 05:23							
Drop Top Plug	02/23/2014 05:27							POP CAP AND DROP WIPER DART, WASH PUMPS AND LINES ON TOP OF PLUG
Pump Displacement	02/23/2014 05:30		10	234.5 3			900.0	FRESH H2O, SLOWED RATE TO 4 BBL A MIN AT 93-103 BBLS AWAY TO PASS DART THROUGH MSC, GOT CEMENT TO SURFACE AT 185 BBLS AWAY. 50 TOTAL
Slow Rate	02/23/2014 05:59		2	224			900.0	
Bump Plug	02/23/2014 06:01		2	234.5 3			1400.0	500 PSI OVER
Check Floats	02/23/2014 06:05							FLOATS HELD, 1.5 BBLS BACK
Drop Opening Device For Multiple Stage Cementer	02/23/2014 06:08							DROP BOMB/ LOAD CLOSING PLUG, WAIT TEN MINS FOR BOMB TO SEAT.
Other	02/23/2014 06:21		1	1			800.0	OPEN TOOL 800 PSI
Pump Spacer 1	02/23/2014 06:25		4	20			440.0	FRESH WATER, GOT CIRCULATION AFTER 4 BBLS
Pump 2nd Stage Tail Slurry	02/23/2014 06:32		6	267			426.0	765 SKS, 12.8 PPG, 1.96 FT3/SK, 10.95 GAL/SK, 5 BOXES OF TOUGH FIBER IN LAST 100 BBLS, GOT BACK TO FRESH WATER RETURNS AT CALCULATED 145 BBLS INTO CEMENT.
Shutdown	02/23/2014 07:23							CIRCULATED 146 BBLS OF CEMENT OFF OF TOOL
Drop Top Plug	02/23/2014 07:24							WASH UP ON TOP OF CLOSING PLUG
Activity Description	Date/Time	Cht #	Rate bbl/min	Volume bbl		Pressure psig		Comments
				Stage	Total	Tubing	Casing	

Sold To # : 300721

Ship To # : 3124401

Quote # :

Sales Order # : 901137038

SUMMIT Version: 7.3.0124

Monday, March 03, 2014 01:19:00

HALLIBURTON

Cementing Job Log

Pump Displacement	02/23/2014 07:27		10	97.24			740.0	FRESH WATER, GOT CEMENT RETURNS BACK AT START OF DISPLACEMENT, 97 BBLs CEMENT BACK TO SURFACE.
Slow Rate	02/23/2014 07:40		4	87			430.0	
Close Multiple Stage Cementer	02/23/2014 07:43		2	97.24			1500.0	1200 PSI OVER LIFT PSI TO CLOSE MSC
Check Floats	02/23/2014 07:46							TOOL CLOSED, .75 BBL BACK
End Job	02/23/2014 07:48							USED 40 LBS OF SUGAR, NO ADD HOURS
Post-Job Safety Meeting (Pre Rig-Down)	02/23/2014 08:15							ALL HES PERSONEL
Rig-Down Equipment	02/23/2014 08:30							
Rig-Down Completed	02/23/2014 09:45							
Pre-Convoy Safety Meeting	02/23/2014 10:00							ALL HES PERSONEL
Depart Location for Service Center or Other Site	02/23/2014 10:10							THANK YOU FOR CHOOSING HALLIBURTON, KEVIN MILLER AND CREW

Sold To # : 300721

Ship To # : 3124401

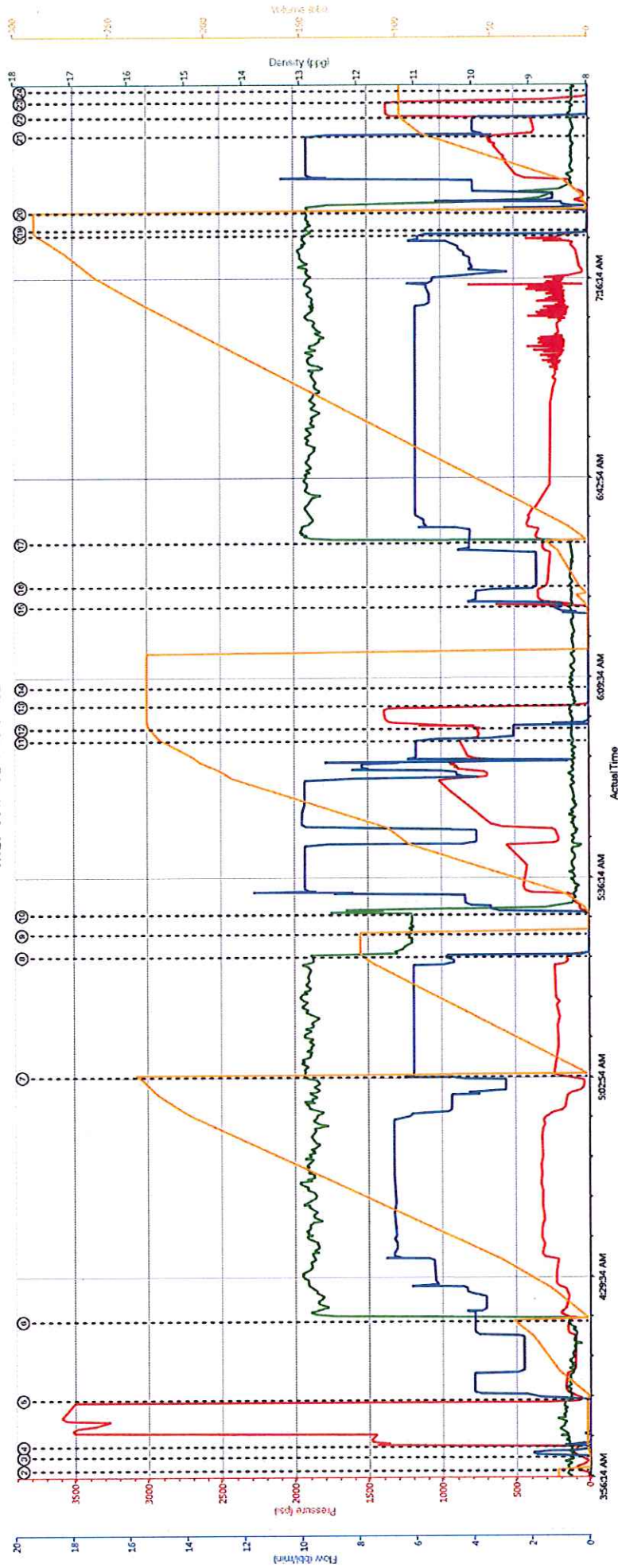
Quote # :

Sales Order # : 901137038

SUMMIT Version: 7.3.0124

Monday, March 03, 2014 01:19:00

9.625" SURFACE-TWO STAGE



DS Pump Press (psi)	DH Density (ppg)	Comb Pump Rate (bbl/min)	Pump Stg for (bbl)
① Start Job 263.410.0	① Test Lines 1425.0, 30.0, 1.6	① Pump Lead Cement 232.12, 99.6, 1.0	① Pump Plug 0.12, 0.0, 0.0
② Start Job 101.0, 26.0	② Pump Spacer 155.0, 25.0, 0.9	② Shutdown 131.12, 63.2, 2.1	② Check Floats -15.12, 52.0, 0
③ Prime Lines 95.0, 23.1, 4.0	③ Pump Lead Cement 147.0, 37.4, 0.3	③ Drop Wiper Dart -13.11, 0, 1.6	③ Slow Rate 975.8, 26.6, 1.4
	④ Pump Plug 751.8, 29.2, 6.3	④ Drop Wiper Dart -13.11, 0, 1.6	④ Check Floats -13.23, 0, 2.0
	⑤ Open Multiple Stage Cement 497.8, 27.0, 0.1	⑤ Shutdown 94.12, 92.0, 2.5	⑤ Pump Tail Cement 300.86, 8.20, 4.17
	⑥ Open Multiple Stage Cement 497.8, 27.0, 0.1	⑥ Shutdown 94.12, 92.0, 2.5	⑥ Pump Plug 0.12, 0.0, 0.0
	⑦ Open Multiple Stage Cement 497.8, 27.0, 0.1	⑦ Shutdown 94.12, 92.0, 2.5	⑦ Check Floats -4.12, 0.0, 0
	⑧ Open Multiple Stage Cement 497.8, 27.0, 0.1	⑧ Shutdown 94.12, 92.0, 2.5	⑧ Pump Plug 0.12, 0.0, 0.0
	⑨ Open Multiple Stage Cement 497.8, 27.0, 0.1	⑨ Shutdown 94.12, 92.0, 2.5	⑨ Check Floats -4.12, 0.0, 0
	⑩ Open Multiple Stage Cement 497.8, 27.0, 0.1	⑩ Shutdown 94.12, 92.0, 2.5	⑩ Pump Plug 0.12, 0.0, 0.0
	⑪ Open Multiple Stage Cement 497.8, 27.0, 0.1	⑪ Shutdown 94.12, 92.0, 2.5	⑪ Check Floats -4.12, 0.0, 0
	⑫ Open Multiple Stage Cement 497.8, 27.0, 0.1	⑫ Shutdown 94.12, 92.0, 2.5	⑫ Pump Plug 0.12, 0.0, 0.0
	⑬ Open Multiple Stage Cement 497.8, 27.0, 0.1	⑬ Shutdown 94.12, 92.0, 2.5	⑬ Check Floats -4.12, 0.0, 0
	⑭ Open Multiple Stage Cement 497.8, 27.0, 0.1	⑭ Shutdown 94.12, 92.0, 2.5	⑭ Pump Plug 0.12, 0.0, 0.0
	⑮ Open Multiple Stage Cement 497.8, 27.0, 0.1	⑮ Shutdown 94.12, 92.0, 2.5	⑮ Check Floats -4.12, 0.0, 0
	⑯ Open Multiple Stage Cement 497.8, 27.0, 0.1	⑯ Shutdown 94.12, 92.0, 2.5	⑯ Pump Plug 0.12, 0.0, 0.0
	⑰ Open Multiple Stage Cement 497.8, 27.0, 0.1	⑰ Shutdown 94.12, 92.0, 2.5	⑰ Check Floats -4.12, 0.0, 0
	⑱ Open Multiple Stage Cement 497.8, 27.0, 0.1	⑱ Shutdown 94.12, 92.0, 2.5	⑱ Pump Plug 0.12, 0.0, 0.0
	⑲ Open Multiple Stage Cement 497.8, 27.0, 0.1	⑲ Shutdown 94.12, 92.0, 2.5	⑲ Check Floats -4.12, 0.0, 0
	⑳ Open Multiple Stage Cement 497.8, 27.0, 0.1	⑳ Shutdown 94.12, 92.0, 2.5	⑳ Pump Plug 0.12, 0.0, 0.0
	㉑ Open Multiple Stage Cement 497.8, 27.0, 0.1	㉑ Shutdown 94.12, 92.0, 2.5	㉑ Check Floats -4.12, 0.0, 0
	㉒ Open Multiple Stage Cement 497.8, 27.0, 0.1	㉒ Shutdown 94.12, 92.0, 2.5	㉒ Pump Plug 0.12, 0.0, 0.0
	㉓ Open Multiple Stage Cement 497.8, 27.0, 0.1	㉓ Shutdown 94.12, 92.0, 2.5	㉓ Check Floats -4.12, 0.0, 0
	㉔ Open Multiple Stage Cement 497.8, 27.0, 0.1	㉔ Shutdown 94.12, 92.0, 2.5	㉔ Pump Plug 0.12, 0.0, 0.0
	㉕ Open Multiple Stage Cement 497.8, 27.0, 0.1	㉕ Shutdown 94.12, 92.0, 2.5	㉕ Check Floats -4.12, 0.0, 0
	㉖ Open Multiple Stage Cement 497.8, 27.0, 0.1	㉖ Shutdown 94.12, 92.0, 2.5	㉖ Pump Plug 0.12, 0.0, 0.0
	㉗ Open Multiple Stage Cement 497.8, 27.0, 0.1	㉗ Shutdown 94.12, 92.0, 2.5	㉗ Check Floats -4.12, 0.0, 0
	㉘ Open Multiple Stage Cement 497.8, 27.0, 0.1	㉘ Shutdown 94.12, 92.0, 2.5	㉘ Pump Plug 0.12, 0.0, 0.0
	㉙ Open Multiple Stage Cement 497.8, 27.0, 0.1	㉙ Shutdown 94.12, 92.0, 2.5	㉙ Check Floats -4.12, 0.0, 0
	㉚ Open Multiple Stage Cement 497.8, 27.0, 0.1	㉚ Shutdown 94.12, 92.0, 2.5	㉚ Pump Plug 0.12, 0.0, 0.0
	㉛ Open Multiple Stage Cement 497.8, 27.0, 0.1	㉛ Shutdown 94.12, 92.0, 2.5	㉛ Check Floats -4.12, 0.0, 0
	㉜ Open Multiple Stage Cement 497.8, 27.0, 0.1	㉜ Shutdown 94.12, 92.0, 2.5	㉜ Pump Plug 0.12, 0.0, 0.0
	㉝ Open Multiple Stage Cement 497.8, 27.0, 0.1	㉝ Shutdown 94.12, 92.0, 2.5	㉝ Check Floats -4.12, 0.0, 0
	㉞ Open Multiple Stage Cement 497.8, 27.0, 0.1	㉞ Shutdown 94.12, 92.0, 2.5	㉞ Pump Plug 0.12, 0.0, 0.0
	㉟ Open Multiple Stage Cement 497.8, 27.0, 0.1	㉟ Shutdown 94.12, 92.0, 2.5	㉟ Check Floats -4.12, 0.0, 0
	㊱ Open Multiple Stage Cement 497.8, 27.0, 0.1	㊱ Shutdown 94.12, 92.0, 2.5	㊱ Pump Plug 0.12, 0.0, 0.0
	㊲ Open Multiple Stage Cement 497.8, 27.0, 0.1	㊲ Shutdown 94.12, 92.0, 2.5	㊲ Check Floats -4.12, 0.0, 0
	㊳ Open Multiple Stage Cement 497.8, 27.0, 0.1	㊳ Shutdown 94.12, 92.0, 2.5	㊳ Pump Plug 0.12, 0.0, 0.0
	㊴ Open Multiple Stage Cement 497.8, 27.0, 0.1	㊴ Shutdown 94.12, 92.0, 2.5	㊴ Check Floats -4.12, 0.0, 0
	㊵ Open Multiple Stage Cement 497.8, 27.0, 0.1	㊵ Shutdown 94.12, 92.0, 2.5	㊵ Pump Plug 0.12, 0.0, 0.0
	㊶ Open Multiple Stage Cement 497.8, 27.0, 0.1	㊶ Shutdown 94.12, 92.0, 2.5	㊶ Check Floats -4.12, 0.0, 0
	㊷ Open Multiple Stage Cement 497.8, 27.0, 0.1	㊷ Shutdown 94.12, 92.0, 2.5	㊷ Pump Plug 0.12, 0.0, 0.0
	㊸ Open Multiple Stage Cement 497.8, 27.0, 0.1	㊸ Shutdown 94.12, 92.0, 2.5	㊸ Check Floats -4.12, 0.0, 0
	㊹ Open Multiple Stage Cement 497.8, 27.0, 0.1	㊹ Shutdown 94.12, 92.0, 2.5	㊹ Pump Plug 0.12, 0.0, 0.0
	㊺ Open Multiple Stage Cement 497.8, 27.0, 0.1	㊺ Shutdown 94.12, 92.0, 2.5	㊺ Check Floats -4.12, 0.0, 0
	㊻ Open Multiple Stage Cement 497.8, 27.0, 0.1	㊻ Shutdown 94.12, 92.0, 2.5	㊻ Pump Plug 0.12, 0.0, 0.0
	㊼ Open Multiple Stage Cement 497.8, 27.0, 0.1	㊼ Shutdown 94.12, 92.0, 2.5	㊼ Check Floats -4.12, 0.0, 0
	㊽ Open Multiple Stage Cement 497.8, 27.0, 0.1	㊽ Shutdown 94.12, 92.0, 2.5	㊽ Pump Plug 0.12, 0.0, 0.0
	㊾ Open Multiple Stage Cement 497.8, 27.0, 0.1	㊾ Shutdown 94.12, 92.0, 2.5	㊾ Check Floats -4.12, 0.0, 0
	㊿ Open Multiple Stage Cement 497.8, 27.0, 0.1	㊿ Shutdown 94.12, 92.0, 2.5	㊿ Pump Plug 0.12, 0.0, 0.0

HALLIBURTON

Water Analysis Report

Company: WPX
Submitted by: KEVIN MILLER
Attention: J.Trout
Lease: RG
Well #: 511-14-298

Date: 2/23/2014
Date Rec.: 2/23/2014
S.O.#: 901137038
Job Type: SURFACE

Specific Gravity	<i>MAX</i>	1
pH	<i>8</i>	6.9
Potassium (K)	<i>5000</i>	500 Mg / L
Calcium (Ca)	<i>500</i>	250 Mg / L
Iron (FE2)	<i>300</i>	0 Mg / L
Chlorides (Cl)	<i>3000</i>	0 Mg / L
Sulfates (SO ₄)	<i>1500</i>	200 Mg / L
Chlorine (Cl ₂)		0 Mg / L
Temp	<i>40-80</i>	72 Deg
Total Dissolved Solids		250 Mg / L

Respectfully: KEVIN MILLER

Title: CEMENTING SUPERVISOR

Location: Grand Junction, CO

NOTICE:

This report is limited to the described sample tested. Any person using or relying on this report agrees that Halliburton shall not be liable for any loss or damage whether due to act or omission resulting from such report or its use.

Sales Order #: 901137038	Line Item: 10	Survey Conducted Date: 2/23/2014
Customer: WPX ENERGY ROCKY MOUNTAIN LLC-EBUS		Job Type (BOM): CMT MULTIPLE STAGES BOM
Customer Representative: TED RAGDALE		API / UWI: (leave blank if unknown) 05-103-11809
Well Name: RG		Well Number: 511-14-298
Well Type: Development Well	Well Country: United States of America	
H2S Present:	Well State: Colorado	Well County: Rio Blanco

Dear Customer,

We hope that you were satisfied with the service quality of this job performed by Halliburton. It is the aim of our management and service personnel to deliver equipment and service of a standard unmatched in the service sector of the energy industry.

Please take the time to let us know if our performance met with your satisfaction. Please be as critical as possible to ensure we constantly improve our service. Your comments are of great value to us and are intended for the exclusive use of Halliburton.

CUSTOMER SATISFACTION SURVEY

CATEGORY	CUSTOMER SATISFACTION RESPONSE	
Survey Conducted Date	The date the survey was conducted	2/23/2014
Survey Interviewer	The survey interviewer is the person who initiated the survey.	KEVIN MILLER (HB11248)
Customer Participation	Did the customer participate in this survey? (Y/N)	Yes
Customer Representative	Enter the Customer representative name	TED RAGDALE
HSE	Was our HSE performance satisfactory? Circle Y or N	Yes
Equipment	Were you satisfied with our Equipment? Circle Y or N	Yes
Personnel	Were you satisfied with our people? Circle Y or N	Yes
Customer Comment	Customer's Comment	GREAT JOB GUYS THANKS/ WELL DONE!!!

CUSTOMER SIGNATURE

Sales Order #: 901137038	Line Item: 10	Survey Conducted Date: 2/23/2014
Customer: WPX ENERGY ROCKY MOUNTAIN LLC-EBUS		Job Type (BOM): CMT MULTIPLE STAGES BOM
Customer Representative: TED RAGDALE		API / UWI: (leave blank if unknown) 05-103-11809
Well Name: RG		Well Number: 511-14-298
Well Type: Development Well	Well Country: United States of America	
H2S Present:	Well State: Colorado	Well County: Rio Blanco

KEY PERFORMANCE INDICATORS

General	
Survey Conducted Date The date the survey was conducted	2/23/2014

Cementing KPI Survey	
Type of Job Select the type of job. (Cementing or Non-Cementing)	0
Select the Maximum Deviation range for this Job What is the highest deviation for the job you just completed? This may not be the maximum well deviation.	Vertical
Total Operating Time (hours) Total Operating Hours Including Rig-up, Pumping, Rig-down. Enter in decimal format.	9
HSE Incident, Accident, Injury HSE Incident, Accident, Injury. This should be recordable incidents only.	No
Was the job purpose achieved? Was the job delivered correctly as per customer agreed design?	Yes
Operating Hours (Pumping Hours) Total number of hours pumping fluid on this job. Enter in decimal format.	4
Customer Non-Productive Rig Time (hrs) Lost time due to Halliburton in the start, execution, or completion of an ordered service or product, or delays in a follow-on service. Enter in decimal format. 0 if none.	0
Type of Rig Classification Job Was Performed Type Of Rig (classification) Job Was Performed On	Drilling Rig (Portable)
Number Of JSAs Performed Number Of Jsas Performed	4
Number of Unplanned Shutdowns Unplanned shutdown is when injection stops for any period of time.	0
Was this a Primary Cement Job (Yes / No)	Yes

Sales Order #: 901137038	Line Item: 10	Survey Conducted Date: 2/23/2014
Customer: WPX ENERGY ROCKY MOUNTAIN LLC-EBUS		Job Type (BOM): CMT MULTIPLE STAGES BOM
Customer Representative: TED RAGDALE		API / UWI: (leave blank if unknown) 05-103-11809
Well Name: RG		Well Number: 511-14-298
Well Type: Development Well	Well Country: United States of America	
H2S Present:	Well State: Colorado	Well County: Rio Blanco

Primary Cement Job= Casing job, Liner job, or Tie-back job.	
Did We Run Wiper Plugs? Did We Run Top And Bottom Casing Wiper Plugs?	Top
Mixing Density of Job Stayed In Designed Density Range (0-100%) Density Range defined as +/- .20 ppg. Calculation: Total BBLs cement mixed at designed density divided by total BBLs of cement multiplied by 100	97
Was Automated Density Control Used? Was Automated Density Control (ADC) Used ?	Yes
Pump Rate (percent) of Job Stayed At Designed Pump Rate Pump Rate range defined as +/- 1bbl/min. Calculation: Total BBLs of fluid pumped at the designed rate divided by Total BBLs of fluid pumped, multiplied by 100	97
Nbr of Remedial Sqz Jobs Rqd - Competition Number Of Remedial Squeeze Jobs Required After Primary Job Performed By Competition	0
Nbr of Remedial Plug Jobs Rqd - HES Number Of Remedial Plug Jobs Needed After Primary Plug Pumped By HES	0
Nbr of Remedial Sqz Jobs Rqd - HES Number Of Remedial Squeeze Jobs Required After Primary Job Performed By HES	0