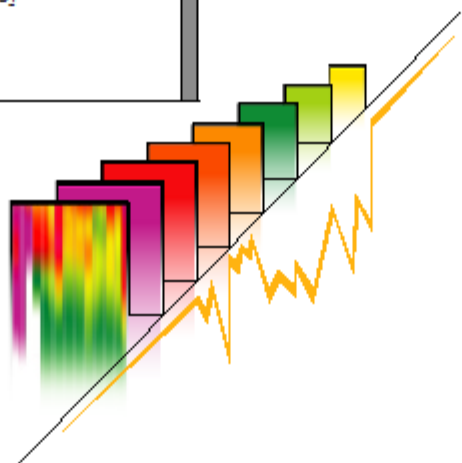
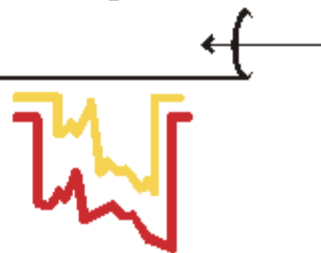


SPECTRASCAN™



Company	ConocoPhillips	Logs Processed	SpectraScan
Well	Libby Ingram Moran Trust 2-1	Date Logged	Jun/14/2014
Field	Wildcat	Type Fluid In Hole	Produced Fluids
County	Arapahoe	Location	Grand Junction
State	Colorado	Computer Processed Product	
Location	Sec. 02 Twp. 05S Rge. 64W API #05-005-07207		
Elevations	KB 5,999' DF N/A GL 5,975'		
Date Processed	Jun/25/2014		
Job Number	191690		
Interval Processed	7,100' - 7,853'		
Processed By	M. Wells		
Processed At	Houston		

----- Fold Here -----

All interpretations are opinions based on inferences from electrical or other measurements and we cannot and do not guarantee the accuracy or correctness of any interpretation, and we shall not, except in the case of gross or willful negligence on our part, be liable or responsible for any loss, costs, damages, or expenses incurred or sustained by anyone resulting from any interpretation made by any of our officers, agents or employees. These interpretations are also subject to our general terms and conditions set out in our current Price Schedule.

Comments:

Recorded by: J. White
Traced by: M. Brees
Proposal ID #44562

Well Information

Surface String: 9 5/8 [in] 36 [lb/ft] Top: Surface [ft] Bottom: 2269 [ft]

Production String: 7 [in] 32 [lb/ft] Top: Surface [ft] Bottom: 8015 [ft]

Frac String: 4.5 [in] 13.5 [lb/ft] Top: Surface [ft] Bottom: 7450 [ft]

Tracer Information

Stage 1

Formation: Niobrara

Perforations: 7688-7692 ft

Treatment Date: Jun/14/2014

Tracers	Form	Type	Amount	Concentration	Total Activity
Sc-46 Zero Wash	Solid	PAD	13,831 gal	1.01 mCi/1000 gal	14.0 mCi
Sb-124 Zero Wash	Solid	100 mesh	7,899 lb	0.38 mCi/1000 lb	3.0 mCi
Ir-192 Zero Wash	Solid	Ottawa Sand	9,477 lb	0.42 mCi/1000 lb	4.0 mCi

Service Company: Halliburton Energy Services

Treatment: Pump water frac treatment at an average of 2,654 psi @ 16.2 bpm (ISIP = 2,315 psi).

Pump a total of 13,831 gal of pad; 7,899 lb of 100 Mesh and 9,477 lb of 40/70 Ottawa Sand in a treated water.

Rel. Lithology

Iridium

Antimony

Scandium

Iridium

Antimony

Scandium

Iridium

Antimony

Scandium

Iridium

Antimony

Scandium

Iridium

Antimony

Scandium

Iridium

Antimony

Scandium

Iridium

Antimony

Scandium

Iridium

Antimony

Scandium

Iridium

Antimony

Scandium

Iridium

Antimony

Scandium

Iridium

Antimony

Scandium

Iridium

Antimony

Scandium

Rel. Lithology

Iridium

Antimony

Scandium

Iridium

Antimony

Scandium

Iridium

Antimony

Scandium

Iridium

Antimony

Scandium

Iridium

Antimony

Scandium

Iridium

Antimony

Scandium

Iridium

Antimony

Scandium

Iridium

Antimony

Scandium

Iridium

Antimony

Scandium

Iridium

Antimony

Scandium

Iridium

Antimony

Scandium

Iridium

Antimony

Scandium

GR PASS 1
0 300

SBRD
0 [IN] 25

GR PASS 2
0 300

IRRDR
0 [IN] 25

GR OH [API]
0 300

SCRDR
0 [IN] 25

CCL
-430 [Volts] 270

Iridium

Antimony

Scandium

Iridium

Antimony

Scandium

Iridium

Antimony

Scandium

Iridium

Antimony

Scandium

Iridium

Antimony

Scandium

Iridium

Antimony

Scandium

Iridium

Antimony

Scandium

Iridium

Antimony

Scandium

Iridium

Antimony

Scandium

Bore Hole

Iridium

Antimony

Scandium

Iridium

Antimony

Scandium

Iridium

Antimony

Scandium

Iridium

Antimony

Scandium

Iridium

Antimony

Scandium

Iridium

Antimony

Scandium

Iridium

Antimony

Scandium

Iridium

Antimony

Scandium

Iridium

Antimony

Scandium

Iridium

IRTOT
0 8000

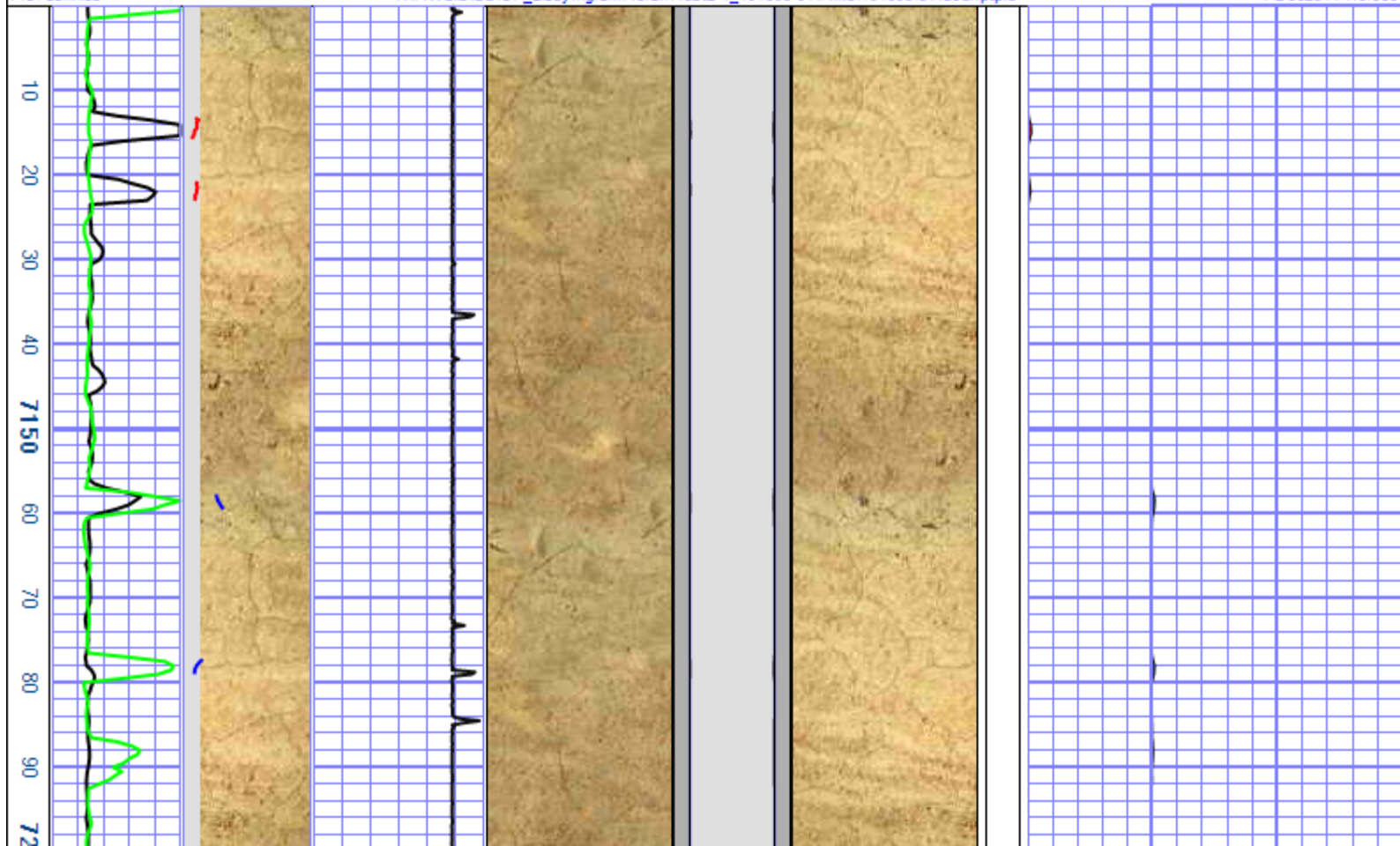
Antimony

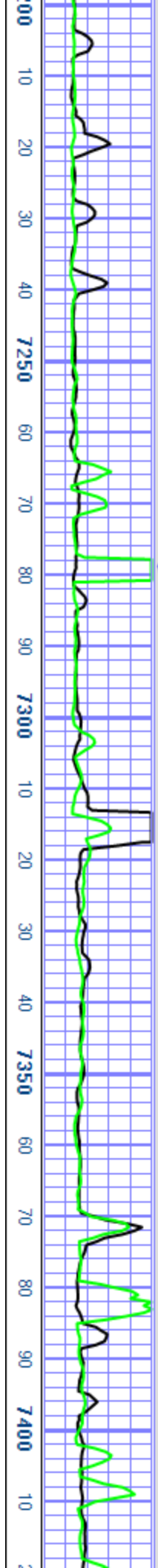
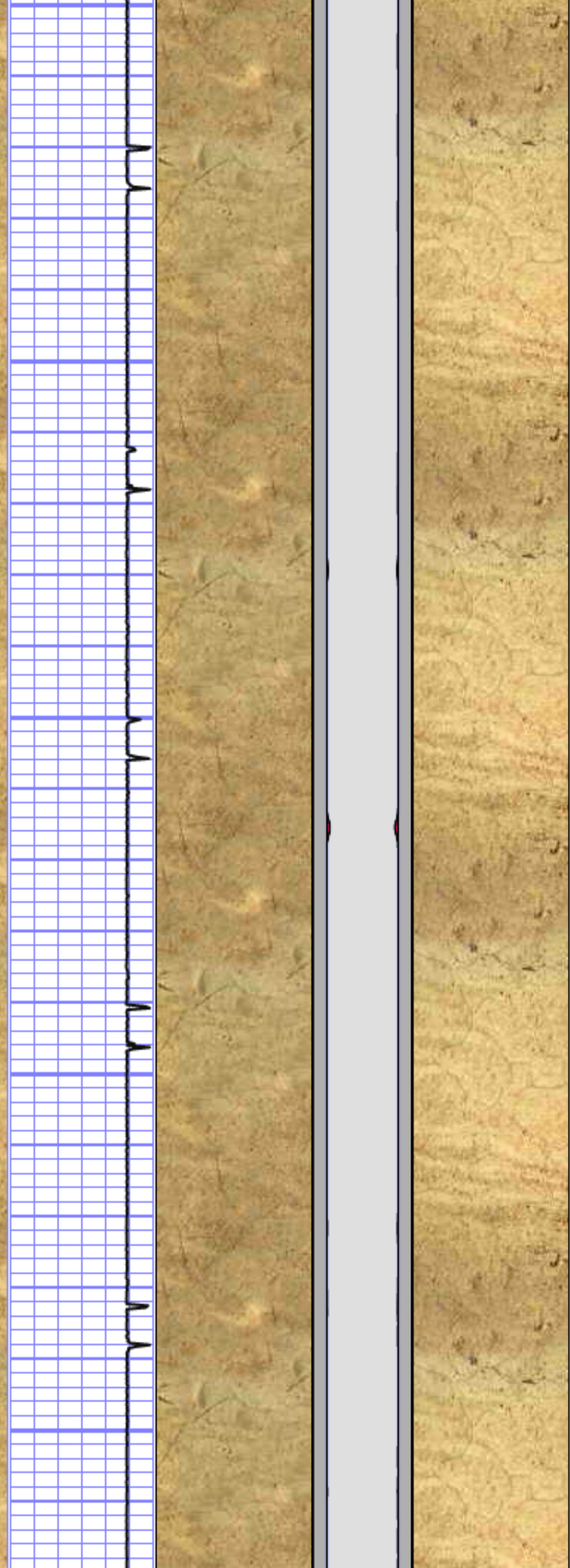
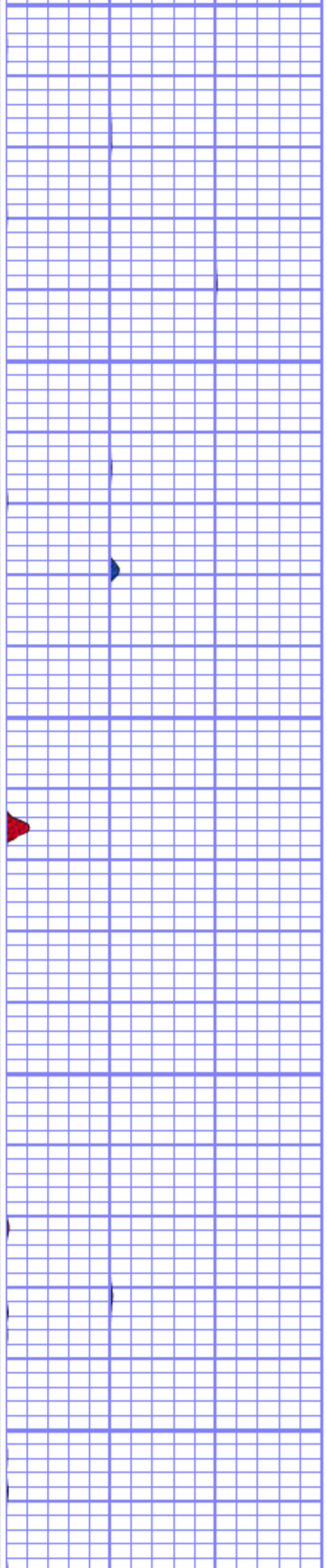
SBTOT
0 8000

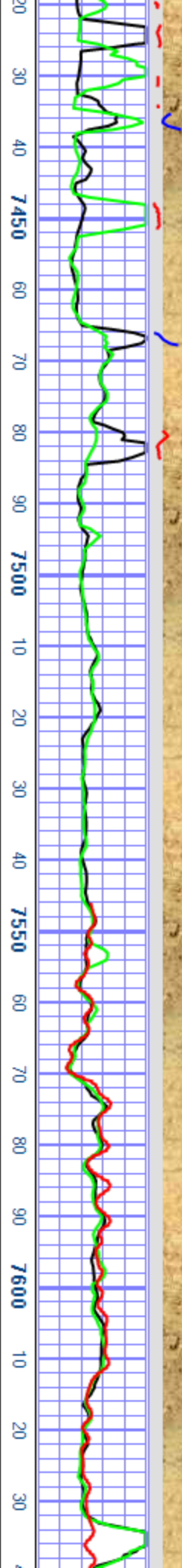
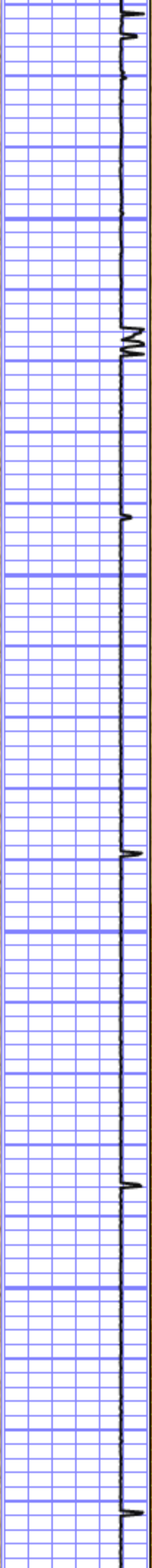
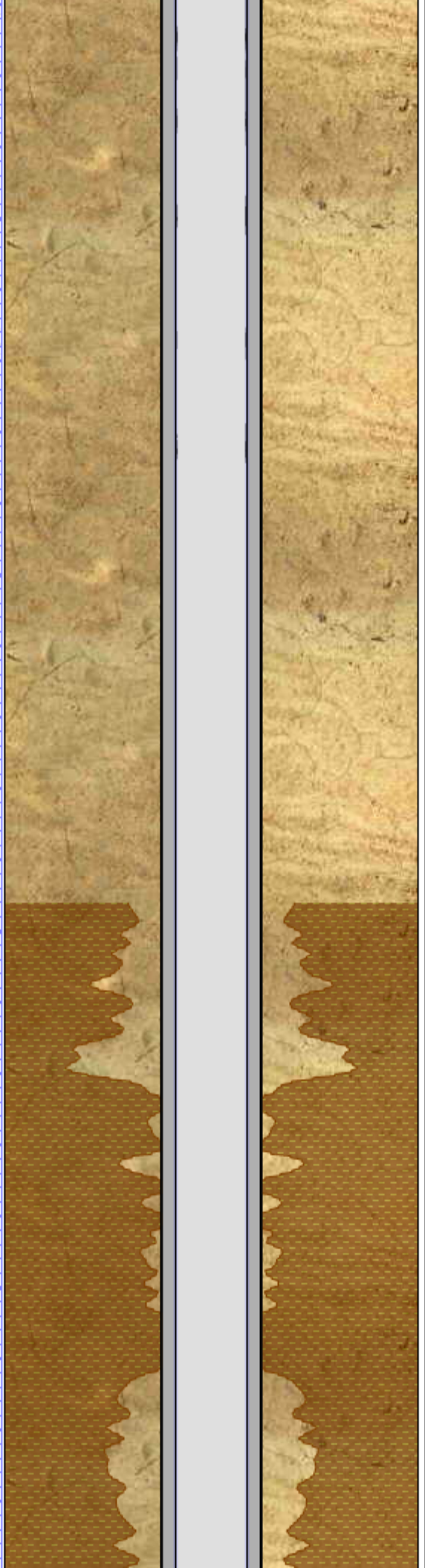
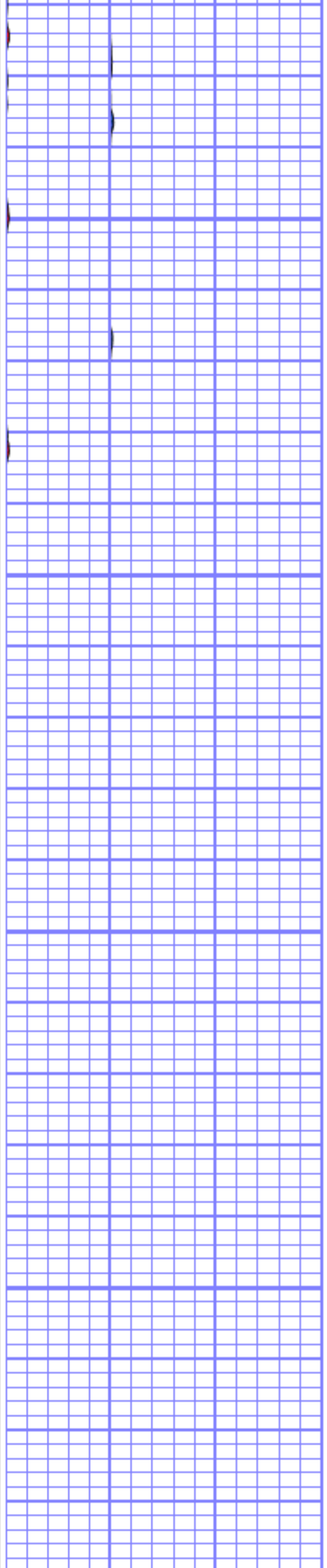
Scandium

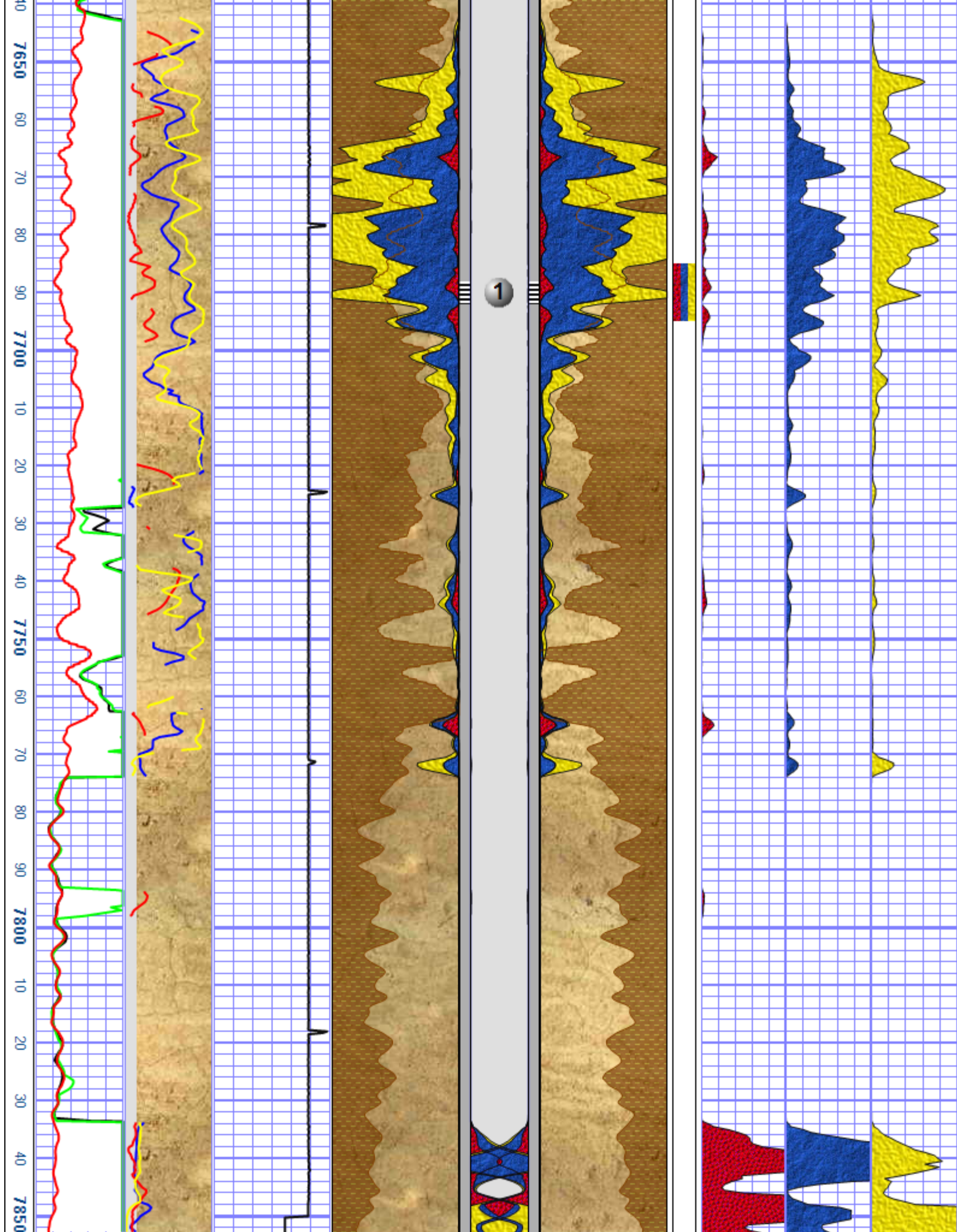
SCTOT
0 8000

ProTechnics Y:\MWells\SS\CP_LibbyIngramMoranTrust2-1_191690-91\Mike\191690\3Tracer.prtpr PD062514 1.0.535









Rel. Lithology

Rel. Lithology

GR PASS 1	SBRD		Iridium		Iridium		
0 300	0 [IN] 25		Antimony		Antimony		
			Scandium		Scandium		
GR PASS 2	IRRD		Iridium		Antimony		
0 300	0 [IN] 25		8000 0		0 8000		
			Antimony		Scandium		
			8000 0		0 8000		
GR OH [API]	SCRD	CCL	Scandium		Iridium	Iridium	Antimony
0 300	0 [IN] 25	-430 [Volts] 270	8000 0	Bore Hole	0 8000	0 8000	0 8000
						SCTOT	

Company:

ConocoPhillips

Well:

Libby Ingram Moran Trust 2-1

Field:

Wildcat

County:

Arapahoe

State: Colorado