

# UNION PACIFIC RESOURCES

Structure : SEC.31-T14S-R44W Well : #1H HOFFMAN 13-31

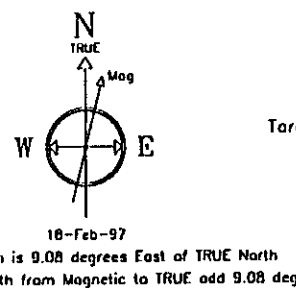
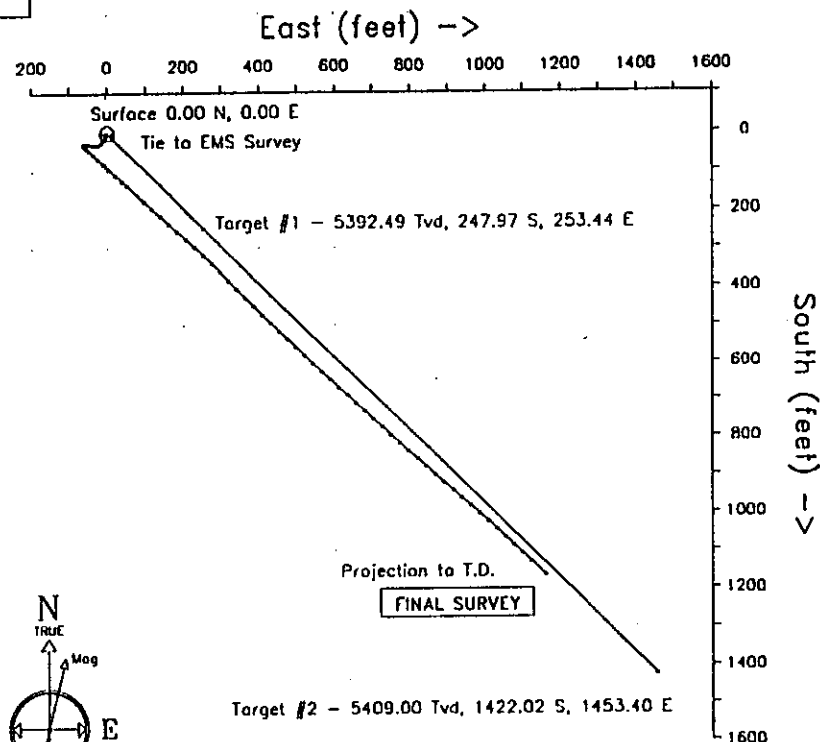
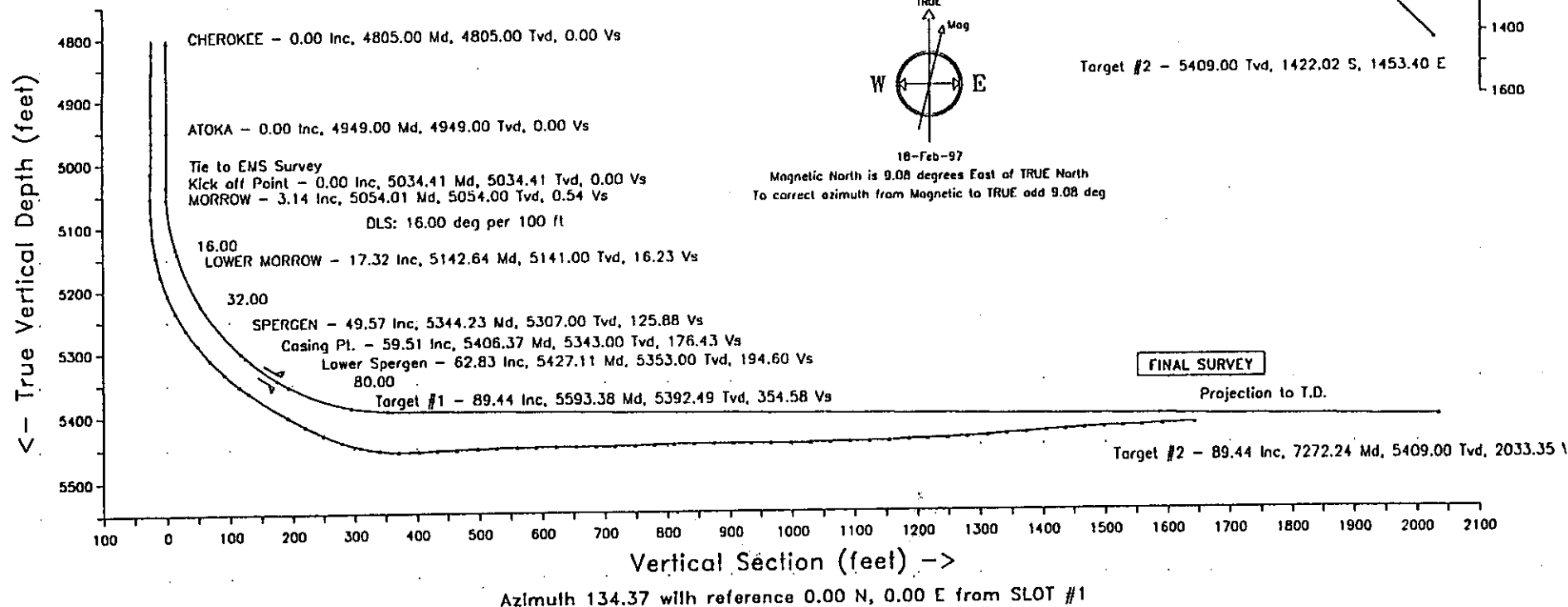
Field : CHEYENNE COUNTY Location : COLORADO



## WELL PROFILE DATA

Point	MD	Inc	Dir	TVD	North	East	V. Sect	Deg/100
Tie on	0.00	0.00	134.37	0.00	0.00	0.00	0.00	0.00
KOP	5034.41	0.00	134.37	5034.41	0.00	0.00	0.00	0.00
End of Build	5593.38	89.44	134.37	5392.49	-247.97	253.44	354.58	16.00
T.D. & Target	7272.24	89.44	134.37	5409.00	-1422.02	1453.40	2033.35	0.00

-- Baker Hughes INTEQ --  
 DRAWN BY: ERIN ANDERSON  
 DATE: MAY 29, 1997  
 TVD REFERENCED RKB  
 DENVER, COLORADO  
 PHONE: (303) 534-3223



00497157