

WELL LOCATION MAP

SMU 4-23-L PAD

16|15
21|22
#5 Rebar

N 89°25'46" E 5198.78'

15|14
22|23
Pin & Cap
PLS 10945

NOTE-DISTANCE TO NEAREST:
Property Line - N87°E 1100'±
Public Road - CR 564 - N37°W 3871'±
Building - N63°W 2± Miles
Railroad - S15°E 11.8± Miles
Powerline - N30°W 393'±
Water Well - N59°E 4839'±
Intermittent Drainage - N8°W 353'±

4-23-L

Surface Location
520 FNL 1100 FEL
Ground Elev 8765.8
Pad Elev 8768.2
LAT:37.69131
LON:-105.20173

22

N 01°19'56" W 5183.71'

(Basis of Bearings)
N 02°44'18" W 5091.25'

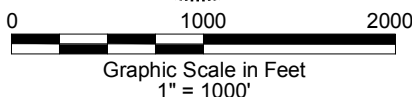
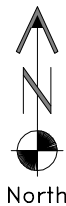
N 88°23'59" E 5323.32'

21|22
28|27
Alum. Cap
PLS 23041

22|23
27|26
See Note 3

SURVEYOR'S STATEMENT

The undersigned hereby states that the well location shown hereon was staked on the ground based on existing monumentation and/or physical evidence found in the field and is correct to the best of my knowledge, information and belief.



NOTES

- 1.) Horizontal and vertical datum, based on an OPUS solution.
 - 2.) All directions, distances, and dimensions shown hereon are based on coordinates from the "Colorado coordinate system of 1983 south zone" (article 52 of title 38, C.R.S.).
 - 3.) All section line dimensions shown hereon are based on field measurements of existing monuments and/or physical evidence found in the field unless otherwise indicated. Refer to land survey plats deposited in Huerfano County, COGCC Well Plats, & BLM Survey.
 - 4.) Physical features shown hereon are for graphical representation only.
 - 5.) See Form 2A for visible improvements within 500' of wellhead.
 - 6.) Distances to nearest section lines are measured perpendicularly.
 - 7.) This is not a land survey nor land survey plat.
 - 8.) Date of Survey 10/2/12 Date of Drawing 5/22/13. REV 1
- PDOP Reading: 2.3 Instrument Operator: Sam Selin

5/22/14

GEO SURV

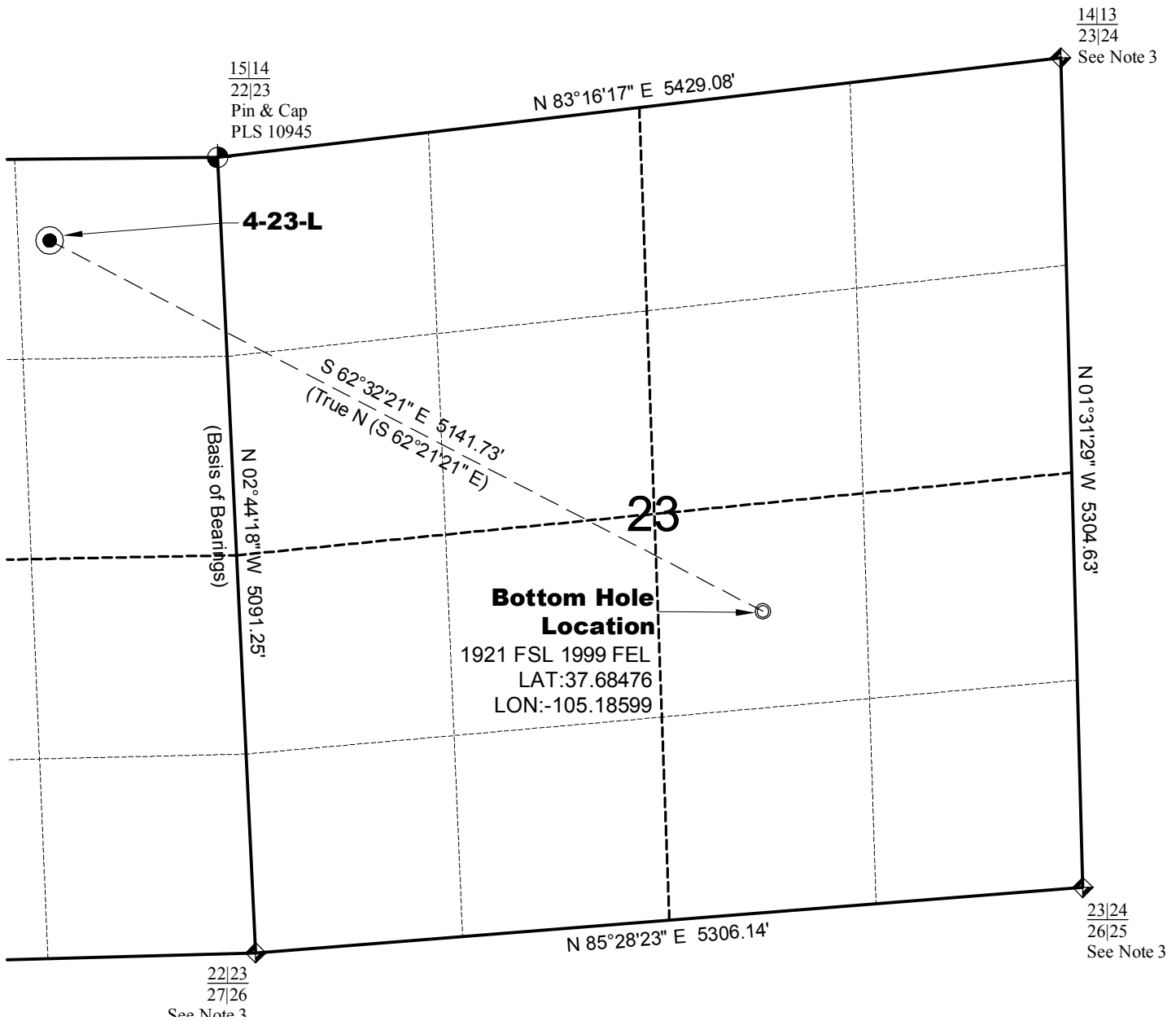
LAND SURVEYING AND MAPPING
LAFAYETTE - WINTER PARK
Ph 303 666 0379 Fx 303 665 6320

OXY PERMIAN
SMU 4-23-L

SL NE1/4 NE1/4 SEC.22 T27S R70W
BHL NW1/4 SE1/4 SEC.23 T27S R70W
6th PM HUERFANO COUNTY COLORADO

BOTTOM HOLE LOCATION MAP

SMU 4-23-L PAD



North



Graphic Scale in Feet
1" = 1000'



LAND SURVEYING AND MAPPING
LAFAYETTE - WINTER PARK
Ph 303 666 0379 Fx 303 665 6320

OXY PERMIAN
SMU 4-23-L

SL NE1/4 NE1/4 SEC.22 T27S R70W
BHL NW1/4 SE1/4 SEC.23 T27S R70W
6th PM HUERFANO COUNTY COLORADO