

**ANADARKO PETROLEUM CORP - EBUS
DO NOT MAIL - PO BOX 4995
THE WOODLANDS, Texas**

Lansdown State 4C-21HZ

Majors 42

Post Job Summary **Cement Surface Casing**

Date Prepared: 4/2/2014
Version: 1

Service Supervisor: SMITH, AARON

Submitted by: TRIER, DEREK

HALLIBURTON

HALLIBURTON

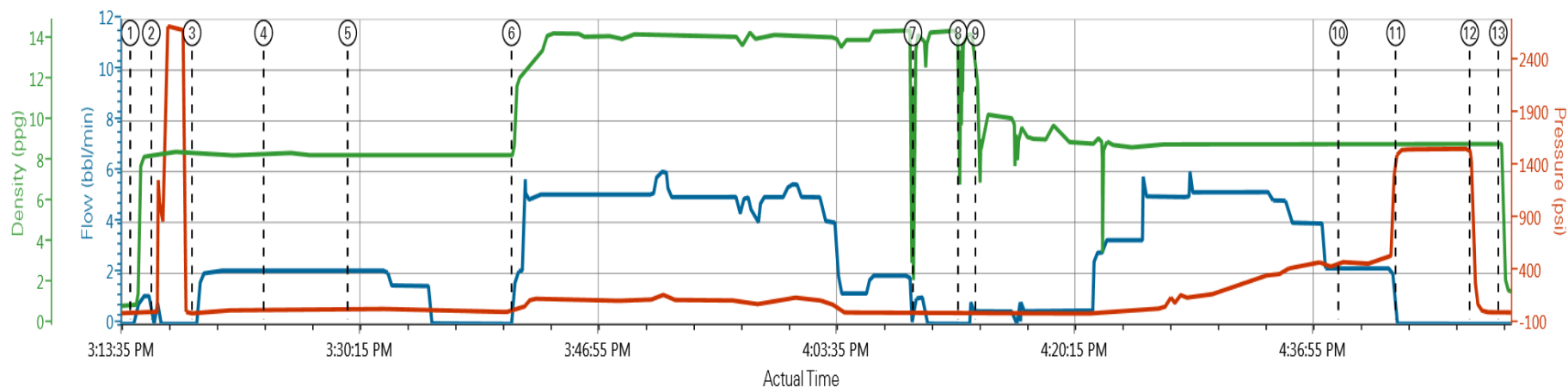
Pumping Schedule

Stage /Plug #	Fluid #	Fluid Type	Fluid Name	Surface Density lbm/gal	Avg Rate bbl/min	Surface Volume	Downhole Volume
1	1	Spacer	Fresh Water	8.33	5.00	10.0 bbl	10.0 bbl
1	1	Spacer	Mud Flush	8.50	5.00	12.0 bbl	12.0 bbl
1	1	Spacer	Fresh Water	8.33	5.00	10.0 bbl	10.0 bbl
1	2	Cement Slurry	SwiftCem B2	14.20	5.00	487.0 sacks	487.0 sacks

HALLIBURTON

Data Acquisition

ANADARKO PETROLEUM LANSDOWN STATE 4C-21HZ SURFACE



Comb Pump Rate (bbl/min) PS Pump Press (psi) DH Density (ppg)

① Start Job 0,0;0.86 ④ Pump Spacer 2.2,34;8.34 ⑦ Shutdown 1.1,13;13.94 ⑩ Other 2.2,486;8.85 ⑬ End Job 0,7;8.88
 ② Test Lines 0,-2;8.37 ⑤ Pump Spacer 1.2,41;8.35 ⑧ Drop Top Plug 0,8;13.74 ⑪ Bump Plug 0,1543;8.86
 ③ Pump Spacer 1.0,1;8.39 ⑥ Pump Cement 1.6,28;9.36 ⑨ Pump Displacement 0.5,5;9.94 ⑫ Check Floats 0,1085;8.92

▼ HALLIBURTON | iCem® Service

Created: 2014-03-24 13:57:58, Version: 3.0.121

Edit

Customer: ANADARKO PETROLEUM CORP -
EBUS

Job Date: 3/24/2014 2:00:56 PM

Well: LANSDOWN STATE 4C-21HZ

Representative: AARON SMITH

Sales Order #: 901212202

HALLIBURTON

Service Supervisor Reports

Job Log

Date/Time	Chart #	Activity Code	Pump Rate	Cum Vol	Pump		Pressure (psig)	Comments
03/24/2014 12:30		Arrive at Location from Service Center						WITH ALL EQUIPMENT AND MATERIALS,
03/24/2014 12:35		Assessment Of Location Safety Meeting						
03/24/2014 12:45		Pre-Rig Up Safety Meeting						RIG-UP JSA
03/24/2014 13:00		Rig-Up Equipment						
03/24/2014 13:00		Rig-Up Completed						
03/24/2014 14:05		Casing on Bottom						
03/24/2014 14:05		Circulate Well						
03/24/2014 14:45		Pre-Job Safety Meeting						WITH CUSTOMER REP AND RIG CREW
03/24/2014 15:14		Start Job						
03/24/2014 15:15		Test Lines						FRESH WATER WITH NO ADDITIVES
03/24/2014 15:18		Pump Spacer 1	5	10			85.0	FRESH WATER WITH NO ADDITIVES
03/24/2014 15:23		Pump Spacer 2	5	12			85.0	FRESH WATER WITH MUD FLUSH
03/24/2014 15:29		Pump Spacer 1	5	10			85.0	FRESH WATER WITH NO ADDITIVES
03/24/2014 15:41		Pump Cement	5	134			125.0	487 SKS SWIFTCM B1 @ 14.2 PPG 1.55 YIELD, 7.68 GAL/SK VERIFIED WEIGHT USING PRESSURIZED SCALES @ 14.2
03/24/2014 15:48		Other						WEIGHED SLURRY USING PRESSURIZED SCALES 14.2 PPG
03/24/2014 15:56		Other						WEIGHED SLURRY USING PRESSURIZED SCALES 14.2 PPG
03/24/2014 16:04		Other						WEIGHED SLURRY USING PRESSURIZED SCALES 14.2 PPG
03/24/2014 16:09		Shutdown						
03/24/2014 16:12		Drop Top Plug						PRE-LOADED HWE TOP PLUG IN PLUG CONTAINER VERIFIED BY CUSTOMER REP
03/24/2014 16:13		Pump Displacement	5	93			460.0	FRESH WATER WITH NO ADDITIVES
03/24/2014 16:32		Spacer Returns to Surface						@51 BBLS DISPLACEMENT, 32 BBLS TO THE PIT
03/24/2014 16:38		Cement Returns to Surface						@83BBLS DISPLACEMENT, 10 BBLS TO THE PIT
03/24/2014 16:42		Bump Plug					1564.0	FINAL CIRCULATING PRESSURE 464
03/24/2014 16:48		Check Floats						FLOATS HELD, BBLS BACK
03/24/2014 16:50		End Job						RIG DOWN JSA, JOURNEY MANAGMENT MEETING, THANKS AARON SMITH AND CREW

The Road to Excellence Starts with Safety

Sold To #: 300466	Ship To #: 3360554	Quote #:	Sales Order #: 901212202
Customer: ANADARKO PETROLEUM CORP - EBUS		Customer Rep: Hersch, Larry	
Well Name: Lansdown State		Well #: 4C-21HZ	API/UWI #: 05-123-39043
Field:	City (SAP): IONE	County/Parish: Weld	State: Colorado
Contractor: Majors		Rig/Platform Name/Num: Majors 42	
Job Purpose: Cement Surface Casing			
Well Type: Development Well		Job Type: Cement Surface Casing	
Sales Person: GREGORY, JON	Srvc Supervisor: SMITH, AARON		MBU ID Emp #: 518187

Job Personnel

HES Emp Name	Exp Hrs	Emp #	HES Emp Name	Exp Hrs	Emp #	HES Emp Name	Exp Hrs	Emp #
DODSON, RICHARD Bryan	4.5	518192	ROOD, TRAVIS James	4.5	561971	SMITH, AARON David	4.5	518187
TOWNSON, JUSTIN T	4.5	555407						

Equipment

HES Unit #	Distance-1 way	HES Unit #	Distance-1 way	HES Unit #	Distance-1 way	HES Unit #	Distance-1 way
10679720C	20 mile	10867419C	20 mile	11019275C	20 mile	11410470C	20 mile
11562544C	20 mile	12010173	20 mile				

Job

Formation Name	Top	Bottom	Called Out	Date	Time	Time Zone
Formation Depth (MD)			On Location	24 - Mar - 2014	07:30	MST
Form Type		BHST	Job Started	24 - Mar - 2014	12:30	MST
Job depth MD	1252. ft	Job Depth TVD	Job Completed	24 - Mar - 2014	15:14	MST
Water Depth		Wk Ht Above Floor	Deparated Loc	24 - Mar - 2014	16:50	MST
Perforation Depth (MD)	From	To		24 - Mar - 2014	17:30	MST

Well Data

Description	New / Used	Max pressure psig	Size in	ID in	Weight lbm/ft	Thread	Grade	Top MD ft	Bottom MD ft	Top TVD ft	Bottom TVD ft
-------------	------------	-------------------	---------	-------	---------------	--------	-------	-----------	--------------	------------	---------------

Fluid Data

Stage/Plug #: 1										
Fluid #	Stage Type	Fluid Name	Qty	Qty uom	Mixing Density lbm/gal	Yield ft ³ /sk	Mix Fluid Gal/sk	Rate bbl/min	Total Mix Fluid Gal/sk	
1	Fresh Water		10.00	Bbl	8.33			5.0		
2	Mud Flush		12.00	bbl	8.5			5.0		
	3.33 lbm/bbl	MUD FLUSH III, 40 LB SACK (101633304)								
	0 gal/bbl	FRESH WATER								
1	Fresh Water		10.00	Bbl	8.33			5.0		
3	SwiftCem B2	SWIFTCM (TM) SYSTEM (452990)	487.0	sacks	14.2	1.54	7.64	5.0	7.64	
	7.64 Gal	FRESH WATER								
Calculated Values			Pressures			Volumes				
Displacement		Shut In: Instant		Lost Returns		Cement Slurry		Pad		
Top Of Cement		5 Min		Cement Returns	10	Actual Displacement	93	Treatment		
Frac Gradient		15 Min		Spacers	32	Load and Breakdown		Total Job		

Rates											
Circulating		Mixing		Displacement	5.0	Avg. Job					
Cement Left In Pipe	Amount	0 ft	Reason	Shoe Joint							
Frac Ring # 1 @	ID		Frac ring # 2 @	ID		Frac Ring # 3 @	ID		Frac Ring # 4 @	ID	
The Information Stated Herein Is Correct				Customer Representative Signature							

