

**RADIAL CEMENT BOND  
GAMMA RAY  
CCL**

Company		KERR MCGEE OIL AND GAS					
Well		UPRR 41 PAN AM H #1					
Field		WATTENBERG					
County		WELD					
State		CO					
Location:		APL # : 05-123-14386					
SHL 1345' FSL & 1305' FEL NE/SE		Other Services					
SEC 23 TWP 3N RGE 68W		Elevation					
Permanent Datum		GL	4975'				
Log Measured From		KB 13'	K.B. 4988'				
Drilling Measured From		KB	D.F. 4987'				
			G.L. 4975'				
Date	5-23-2014						
Run Number	ONE						
Depth Driller	7985'						
Depth Logger	5213'						
Bottom Logged Interval	5210'						
Top Log Interval	4000'						
Open Hole Size	7.875						
Type Fluid	WATER						
Density / Viscosity	1.0						
Max. Recorded Temp.	154						
Estimated Cement Top	4696'						
Time Well Ready	N/A						
Time Logger on Bottom	N/A						
Equipment Number	4310						
Location	GREELEY						
Recorded By	N. BREHMER						
Witnessed By	A. HOLTEN						
Borehole Record		Tubing Record					
Run Number	Bit	From	To	Size	Weight	From	To
Casing Record	Size	Wgt/Ft	Top	Bottom			
Surface String	8.63	24#	SURFACE	667'			
Prot. String							
Production String	5.5	17#	SURFACE	7493'			
Liner							

<<< Fold Here >>>

All interpretations are opinions based on inferences from electrical or other measurements and we cannot and do not guarantee the accuracy or correctness of any interpretation, and we shall not, except in the case of gross or willful negligence on our part, be liable or responsible for any loss, costs, damages, or expenses incurred or sustained by anyone resulting from any interpretation made by any of our officers, agents or employees. These interpretations are also subject to our general terms and conditions set out in our current Price Schedule.

Comments

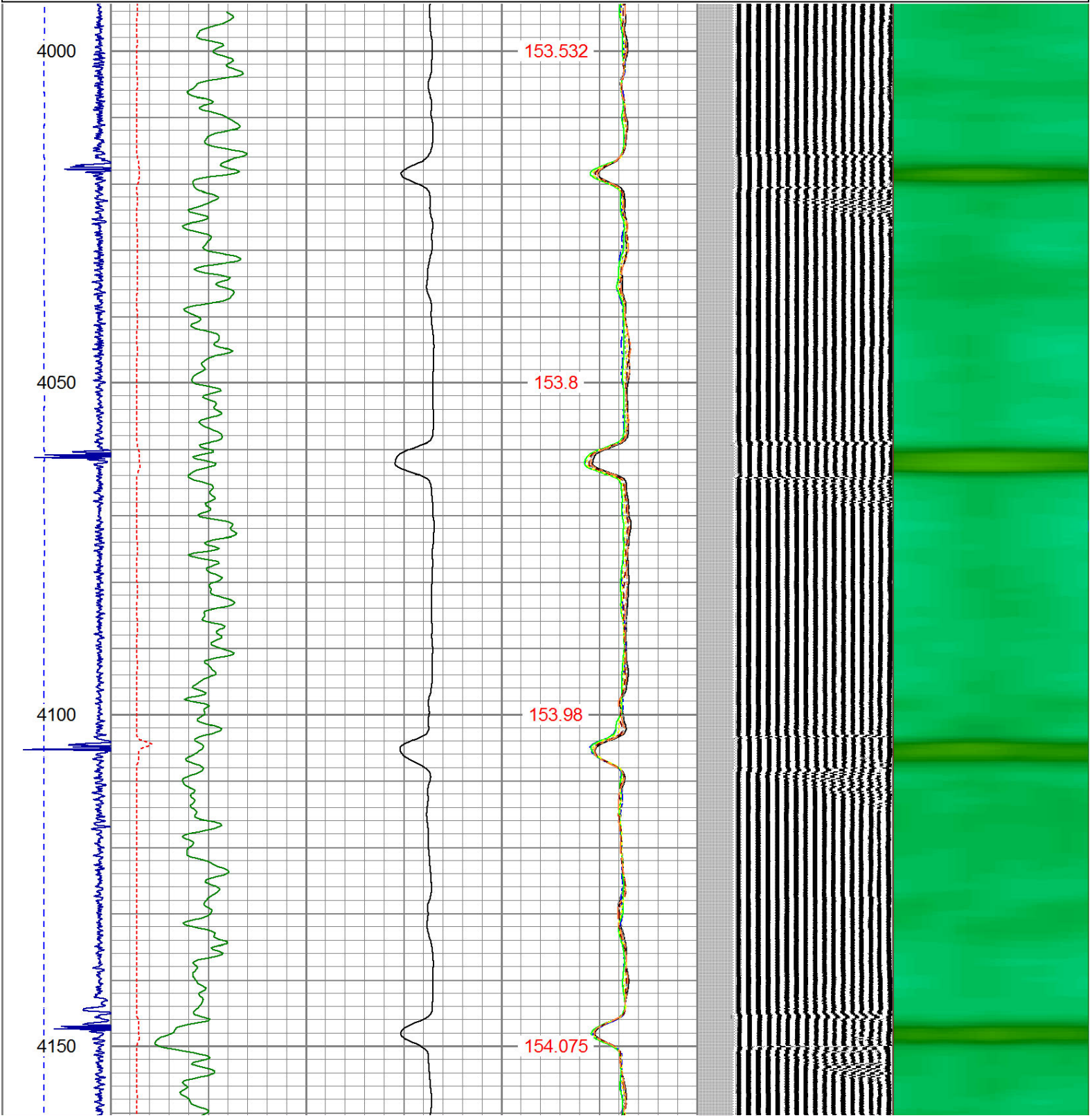
RAN CBL TO VERIFY CEMENT BOND

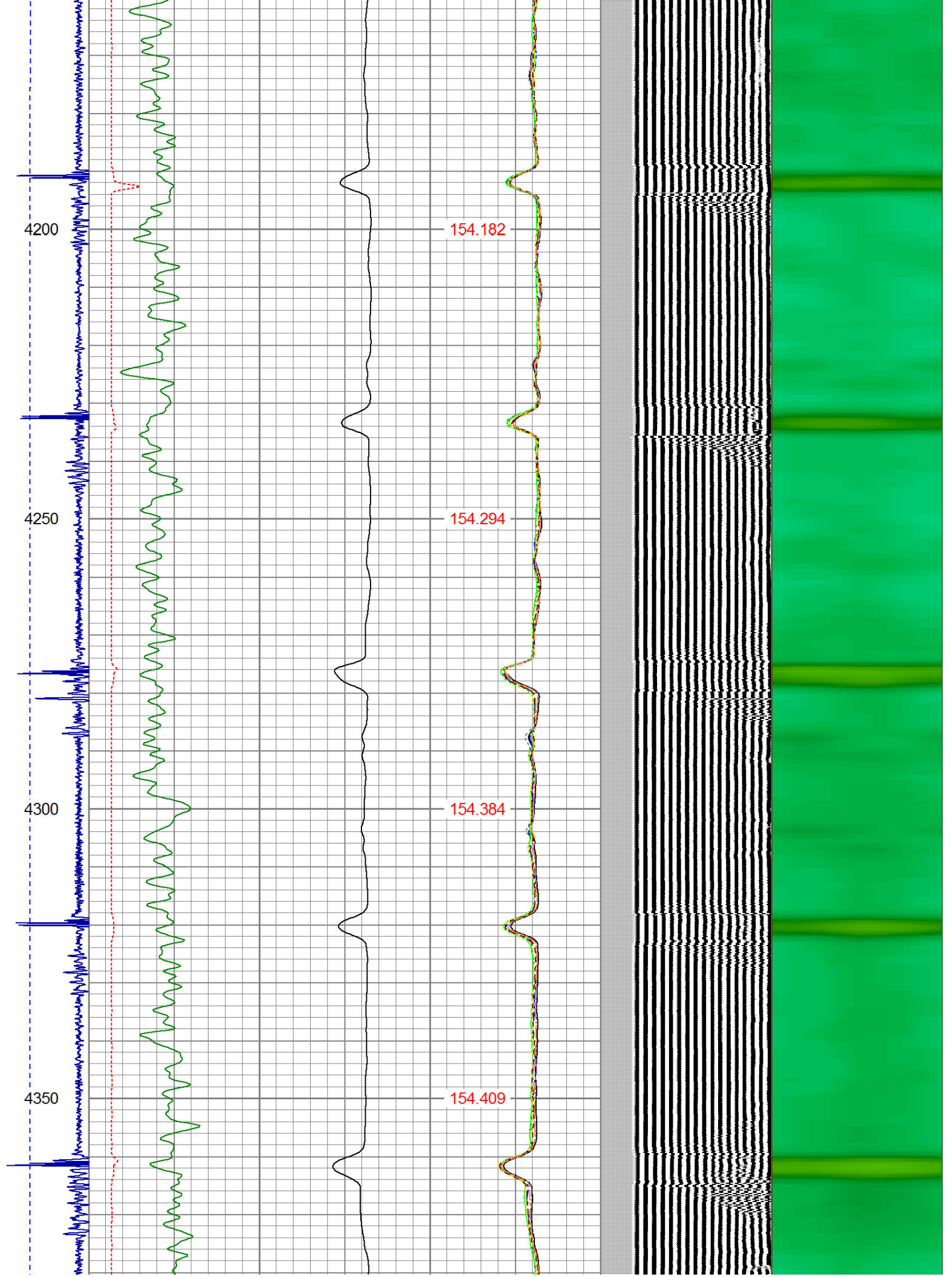
THANK YOU FOR USING WARRIOR !!!!!!!

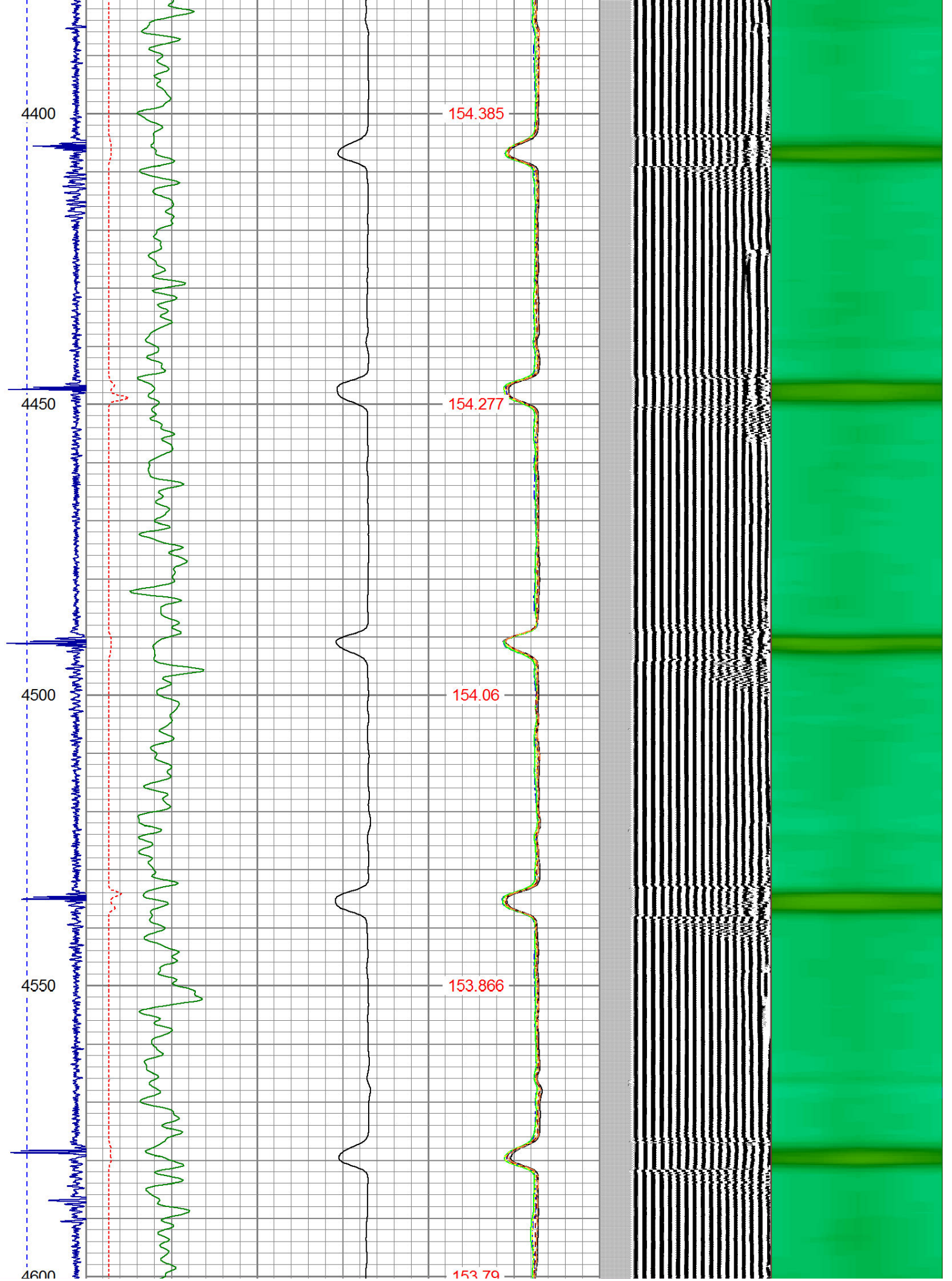
Sensor	Offset (ft)	Schematic	Description	Len (ft)	OD (in)	Wt (lb)

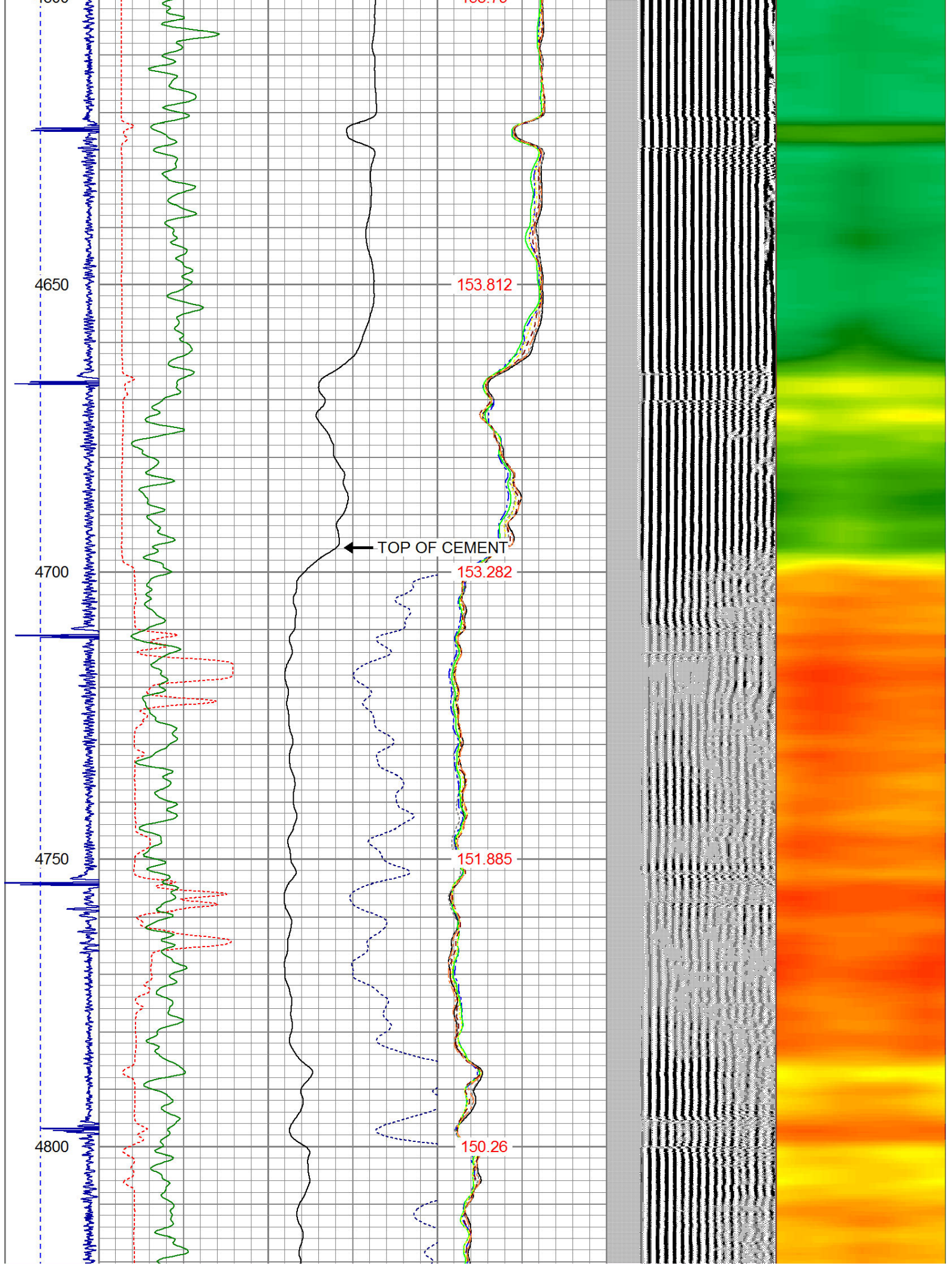
			PTS275	2.83	2.75	
HEADVOLT	16.13					
IntTemp	14.71					
WVF3FT	11.46		RBT-Probe (Base)	8.92	2.75	90.00
WVFCAL	11.46		Probe Radii Bond Tool with Digital Telemetry			
WVFS1	11.46					
WVFS2	11.46					
WVFS3	11.46					
WVFS4	11.46					
WVFS5	11.46					
WVFS6	11.46					
WVFS7	11.46					
WVFS8	11.46					
WVF5FT	10.46					
CNLSC	6.00		CNT-Probe_B (275)	2.88	2.75	40.00
CNSSC	5.17		6 bow centralizer			
CCL	3.64					
			GR-Probe (275)	4.33	2.75	30.00
			Probe 2.75"			
GR	0.90					
Dataset: uprr 41 pam am h #1.db: field/well/run1/pass3 Total Length: 18.96 ft Total Weight: 160.00 lb O.D. 2.75 in						

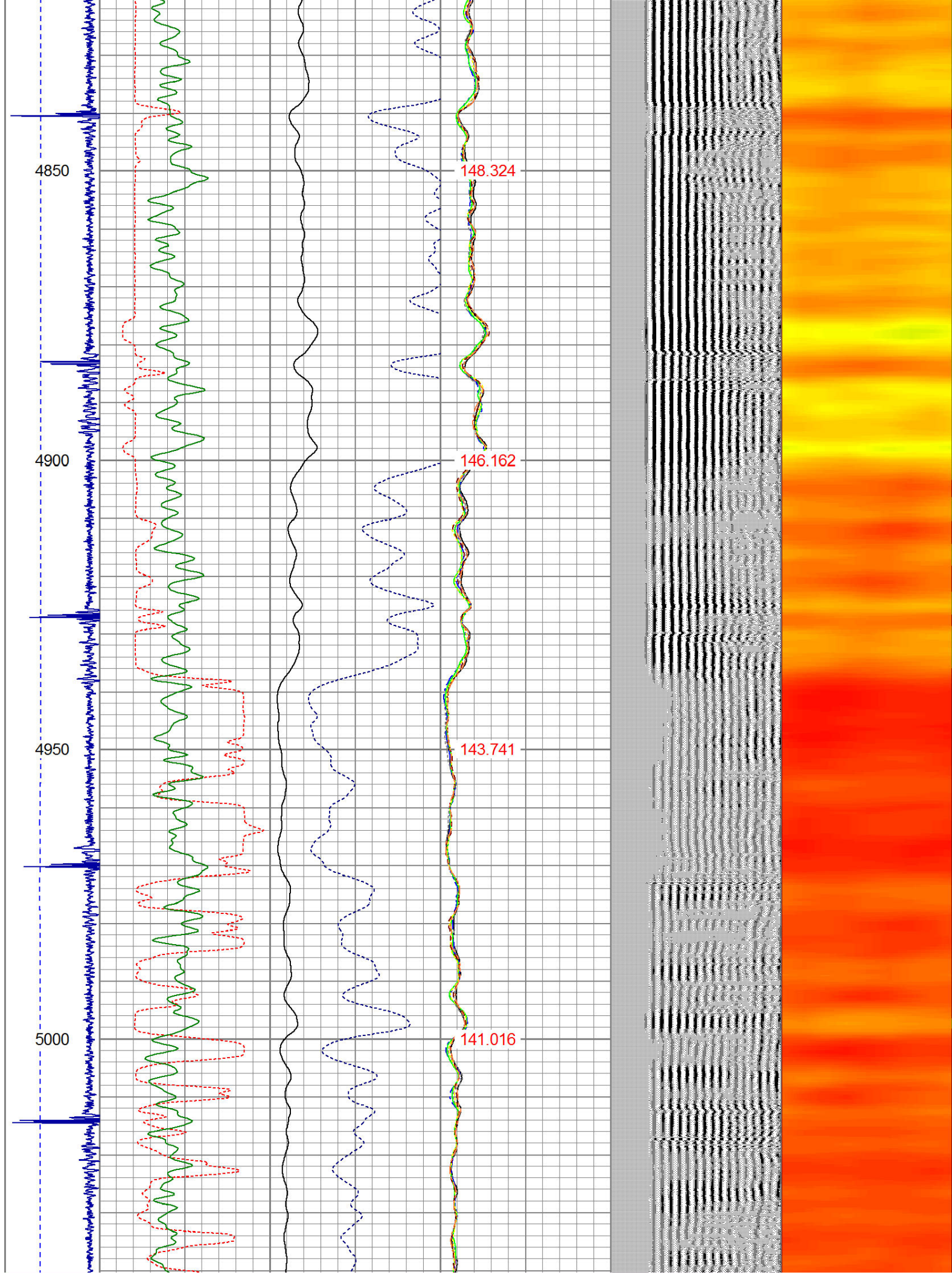
Dataset Creation: Fri May 23 07:16:06 2014 by Log 7.0 B1																						
Charted by: Depth in Feet scaled 1:240																						
-9	CCL	1	200	TT (usec)	800	0	AMP (mV)	100	0	AMPS1	100	200	VDL	1200	1	Cement Map	8					
LSPD (ft/min)	0		0	GR (GAPI)	200	0	AMPx5 (mV)	20	0	AMPS2	100			1			100					
	200		200	GR (GAPI)	400																	
	0		250																			
										0	AMPS4	100										
										0	AMPS5	100										
										0	AMPS6	100										
										0	AMPS7	100										
										0	AMPS8	100										
										IntTemp												
										(degF)												

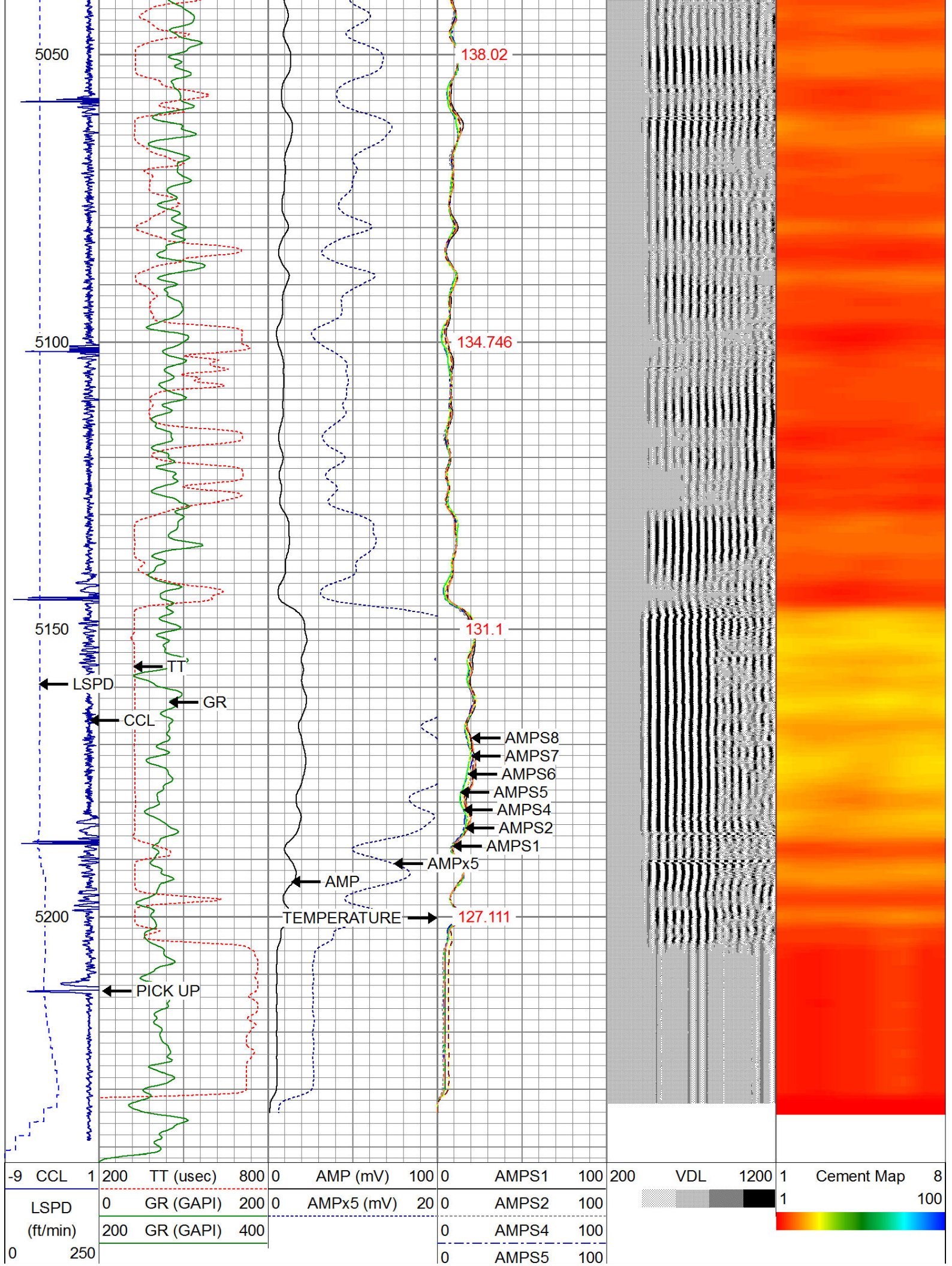












0	AMPS6	100
0	AMPS7	100
0	AMPS8	100
IntTemp		
(degF)		



**WARRIOR**  
ENERGY SERVICES

Company KERR McGEE OIL AND GAS

Well UPRR 41 PAN AM H #1

Field WATTENBERG

County WELD

State CO