

WELL LOCATION FOR AUGUSTUS ENERGY RESOURCES LLC

LUNDGREN FARMS 22-08 5N46W

R 46 W

NOTES

BEARINGS SHOWN HEREON ARE
BASED UPON RTK GPS
OBSERVATIONS

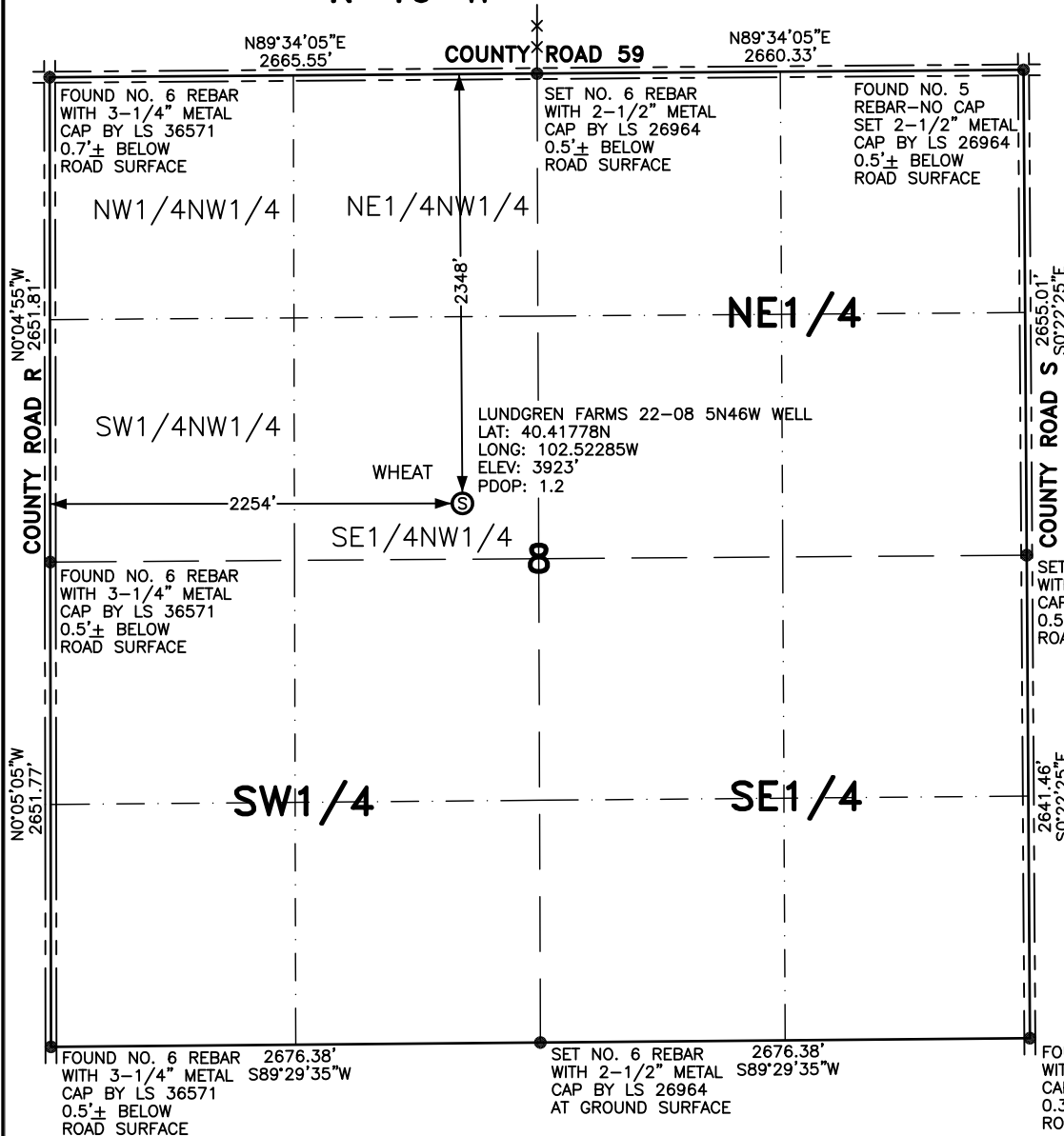
SEE LOCATION DRAWING FOR
IMPROVEMENTS WITHIN 700' OF
LOCATION.

USGS QUAD MAP:
CLARKEVILLE NE, COLO.

LAT/LONG VALUES ARE NAD83

ELEVATIONS BASED UPON NGS
OPUS SOLUTION NAVD 88 DATUM

ALL DISTANCES TO SECTION LINES
ARE MEASURED PERPENDICULAR
TO AND ARE AT RIGHT ANGLES
TO SAID SECTION LINES.



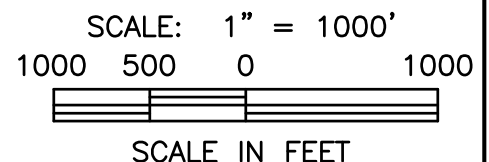
LEGEND

⊙ FIELD SURVEYED
WELL LOCATION

== == == ROAD

-x-x- FENCE

THIS WELL LOCATION PLAT HAS BEEN PREPARED FOR AUGUSTUS ENERGY RESOURCES LLC
TO LOCATE THE LUNDGREN FARMS 22-08 5N46W WELL BEING 2254 FEET FROM THE WEST LINE AND
2348 FEET FROM THE NORTH LINE IN THE SE1/4NW1/4 OF SECTION 8,
TOWNSHIP 5 NORTH, RANGE 46 WEST OF THE 6TH P.M., YUMA COUNTY, COLORADO.
THE SURFACE ELEVATION AT THIS POINT IS 3923 FEET.
THIS IS NOT A LAND SURVEY PLAT.



LEIBERT-McATEE & ASSOCIATES, INC.

P.O. BOX 442 615 SOUTH TENTH AVENUE
STERLING, CO 80751 970-522-1960

FIELD DATE: 6-16-14	DWG DATE: 6-27-14	GPS OPERATOR: DARREN VEAL
LUNDGREN FARMS 22-08 5N46W	DWG NO. 851-14	SHEET 1 OF 1