

WELL LOCATION FOR AUGUSTUS ENERGY RESOURCES LLC

BARBER 34-07 5N46W

NOTES

BEARINGS SHOWN HEREON ARE
BASED UPON RTK GPS
OBSERVATIONS

SEE LOCATION DRAWING FOR
IMPROVEMENTS WITHIN 700' OF
LOCATION.

USGS QUAD MAP:
CLARKEVILLE NE, COLO.

LAT/LONG VALUES ARE NAD83

ELEVATIONS BASED UPON NGS
OPUS SOLUTION NAVD 88 DATUM

ALL DISTANCES TO SECTION LINES
ARE MEASURED PERPENDICULAR
TO AND ARE AT RIGHT ANGLES
TO SAID SECTION LINES.

LEGEND

⊙ FIELD SURVEYED
WELL LOCATION

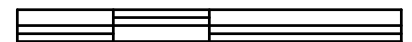
== == == ROAD

-x-x- FENCE



SCALE: 1" = 1000'

1000 500 0 1000



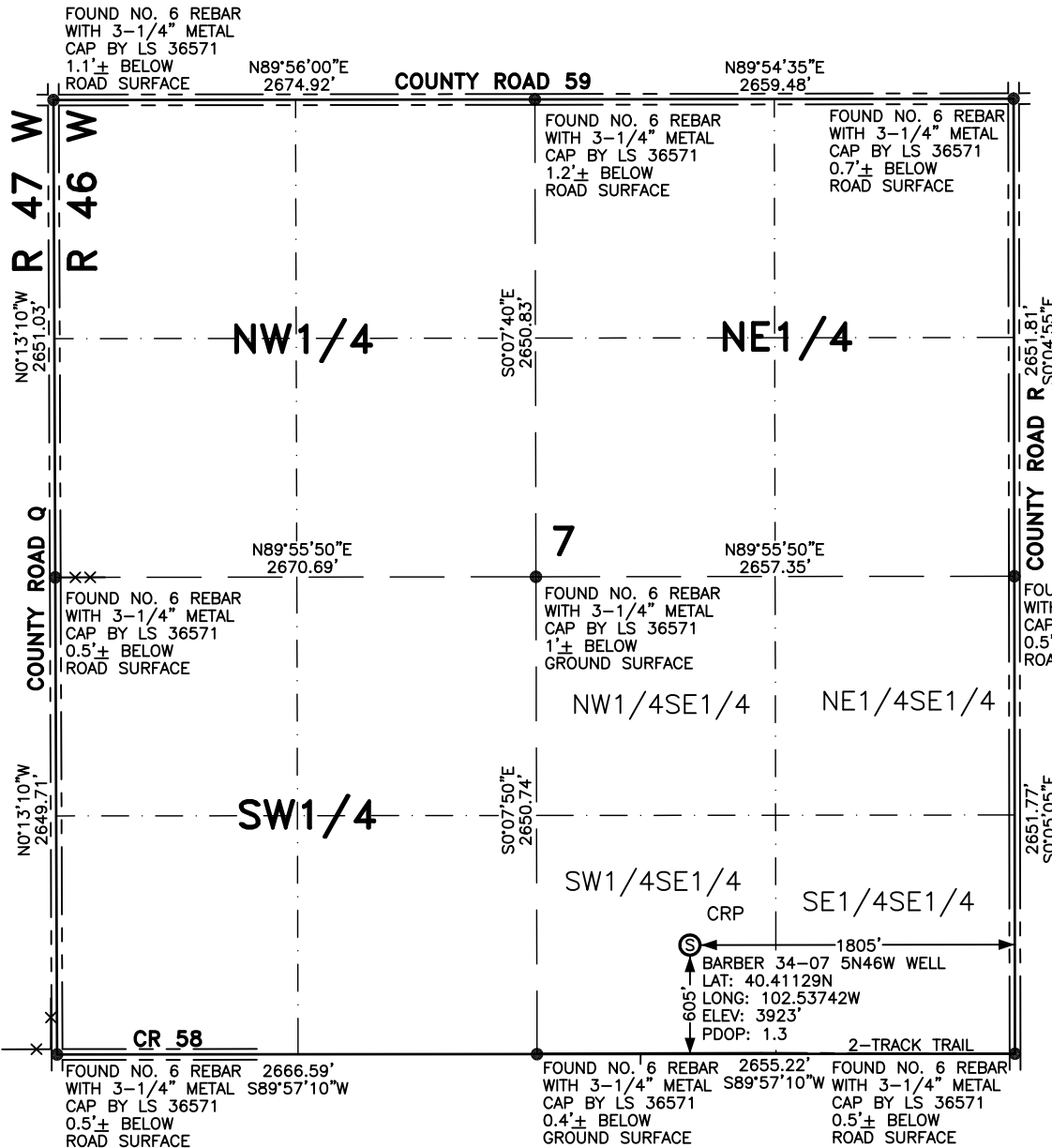
SCALE IN FEET



LEIBERT-McATEE & ASSOCIATES, INC.

P.O. BOX 442 615 SOUTH TENTH AVENUE
STERLING, CO 80751 970-522-1960

FIELD DATE: 6-16-14	DWG DATE: 6-27-14	GPS OPERATOR: DARREN VEAL
BARBER 34-07 5N46W	DWG NO. 850-14	SHEET 1 OF 1



THIS WELL LOCATION PLAT HAS BEEN PREPARED FOR AUGUSTUS ENERGY RESOURCES LLC
TO LOCATE THE BARBER 34-07 5N46W WELL BEING 1805 FEET FROM THE EAST LINE AND
605 FEET FROM THE SOUTH LINE IN THE SW1/4SE1/4 OF SECTION 7,
TOWNSHIP 5 NORTH, RANGE 46 WEST OF THE 6TH P.M., YUMA COUNTY, COLORADO.
THE SURFACE ELEVATION AT THIS POINT IS 3923 FEET.
THIS IS NOT A LAND SURVEY PLAT.