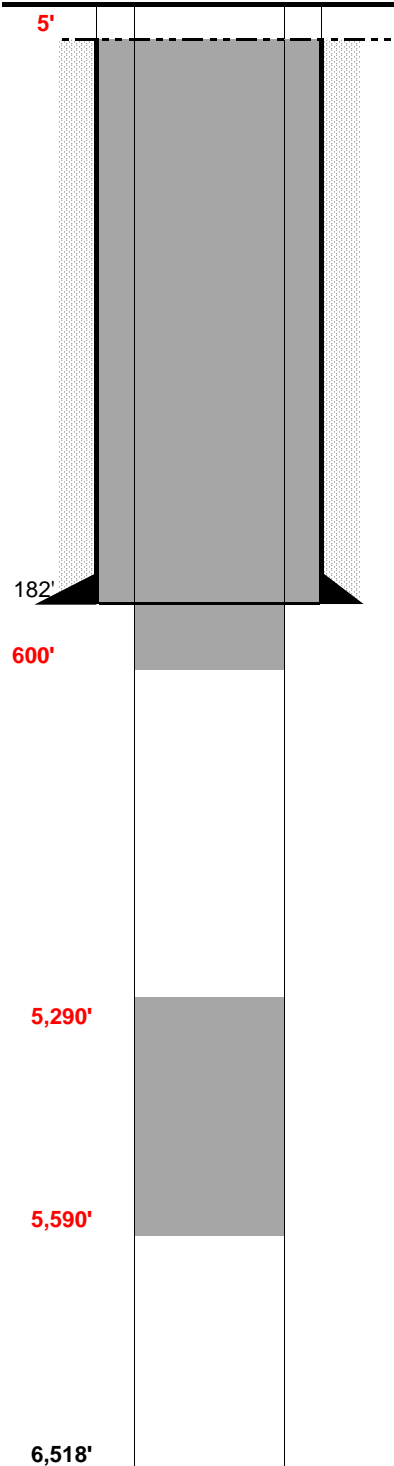


PROPOSED WBD

WELL NAME:	Dennis #F	COUNTY:	Weld	SPUD:	12/27/88
OPERATOR:	Petroleum Energy Corp	STATE:	Colorado	D&A:	12/31/88
COMP ZONE:		API :	05-123-14187	GL:	4760'
LOCATION:	9N 58W 33Sec SE NW 6 PM				



SURFACE CASING

DEPTH: 182' SIZE: 8.625" GRADE: WT (#/ft): 24.0
 CEMENT:
 COMMENTS:

PRODUCTION CASING

DEPTH: SIZE: GRADE: WT (#/ft):
 CEMENT: TOC:
 COMMENTS:

PERFS: - PROD ZONE 1:
 PERFS: - ZONE 2:
 PERFS: - ZONE 3:

PREVIOUS PLUGS

RECOVERED: SIZE:
 CMT 1: 205' - 155' COMMENT: 25 SX
 CMT 2: 30' - 4' COMMENT: 10 sx to surface
 CMT 3: - COMMENT:
 CMT 3: - COMMENT:

OTHER: Proposed Plug 1: 300' cement from 5590' to 5290' (above Niobrara)
 Proposed Plug #2: 600' cement from 600' to surface (Isolate FW Zones)

FORMATIONS:

FW Zone:
 NIOBRARA: 5,590'
 FORT HAYS 5,784'
 CODELL 5,828'
 D SAND 6,358'
 J SAND 6,446'