



FILE NO: US086321	COMPANY WPX ENERGY INC
API NO: 05045221350000	WELL WPX ENERGY PA 544-3
	FIELD PARACHUTE
	COUNTY GARFIELD
	STATE CO
Ver. 3.87 S3 T7S R95W PAD: GV 86-2 RIG: AZTEC 1000	LOCATION: SHL: 2023' FSL 244' FWL S2 T7S R95W BHL: 244' FSL 509' FEL S3 T7S R95W SEC 3 TWP 7S RGE 95W
PERMANENT DATUM LOG MEASURED FROM DRILL. MEAS. FROM	OTHER SERVICES BOND LOG ELEVATIONS: KB 5846 FT DF GL 5821 FT

DATE	17-May-2014	
RUN	TRIP	1
SERVICE ORDER	US086321	
DEPTH DRILLER	8143 FT	
DEPTH LOGGER	8122 FT	
BOTTOM LOGGED INTERVAL	8112 FT	
TOP LOGGED INTERVAL	4606 FT	
TIME STARTED	1230	
TIME FINISHED	1830	
OPERATOR RIG TIME	6 HR	
TYPE OF FLUID IN HOLE	WATER	
FLUID DENSITY	NA	
FLUID SALINITY	NA	
FLUID LEVEL	72 FT	
LOGGED CEMENT TOP	NA	
WELLHEAD PRESSURE	O	
MAXIMUM HOLE DEVIATION	NA	
NOMINAL LOGGING SPEED	15 F/MN	
MAX. RECORDED TEMP.	218 DEGF	
REFERENCE LOG	BAKER HUGHES BOND LOG	
REFERENCE LOG DATE	18-MAY-2014	
EQUIP. NO.	LOCATION	
RECORDED BY	SMITH/NEWELL	GRAND JCT
WITNESSED BY	J BRADY	

IN MAKING INTERPRETATIONS OF LOGS OUR EMPLOYEES WILL GIVE THE CUSTOMER THE BENEFIT OF THEIR BEST JUDGEMENT. BUT SINCE ALL INTERPRETATIONS ARE OPINIONS BASED ON INFERENCES FROM ELECTRICAL OR OTHER MEASUREMENTS, WE CANNOT, AND WE DO NOT GUARANTEE THE ACCURACY OR CORRECTNESS OF ANY INTERPRETATION. WE SHALL NOT BE LIABLE OR RESPONSIBLE FOR ANY LOSS, COST, DAMAGES, OR EXPENSES WHATSOEVER INCURRED OR SUSTAINED BY THE CUSTOMER RESULTING FROM ANY INTERPRETATION MADE BY ANY OF OUR EMPLOYEES.

BOREHOLE RECORD		
BIT SIZE	FROM	TO
13.5 IN	0 FT	1272 FT
8.75 IN	1272 FT	8198 FT

CASING RECORD				
SIZE	WEIGHT	GRADE	FROM	TO
9.625 IN	32.2 LB/F		0 FT	1272 FT
4.5 IN	11.6 LB/F		0 FT	8198 FT

REMARKS

RUN 1 TRIP 1: ALL DATA ON THIS LOG IS DEPTH SHIFTED AND DEPTH MATCHED USING GAMMA RAY CURVE T THE BAKER HUGHES BOND LOG DONE 18-MAY-2014 (AT CLIENT'S REQUEST)

THE DEPTH MATCHING PROCESS CREATES POTENTIAL FOR COLLAR LENGTHS TO VARY FROM THOSE RECORDED ON OTHER CASED HOLE WIRELINE UNITS WITHOOUT GAMMA RAY REFERENCE

AMOUNT LINEAR SHIFT +7'

BHT: 218 DEG F

SJ = 4757' - 4778'

THANK YOU FOR CHOOSING BAKER HUGHES WIRELINE SERVICES

EQUIPMENT DATA

RUN	TRIP	TOOL	SERIES NO.	SERIAL NO.	POSITION
1	1	PCM PWR SUP	8250EA	10408796	FREE
1	1	TELE/CCL	8248ED	10590814	FREE
1	1	GAMMA RAY	8262XA	10317216	FREE
1	1	RPM ELEC	8281EA	10294755	FREE
1	1	RPM	8283PA	10466231	FREE
1	1	RPM FA	8281FA	10307727	FREE

MAIN SECTION PNC 3-D MODE

ECLIPS 6.2i ECLIPS General Release Rel 6.2i Wed Jun 12 12:21:40 CDT 2013

Updates: 1

Plotted: Sun May 18 16:06:19 2014

PARAMETER AND FILTER SUMMARY REPORT

FILE: /dat1a/CH086321/n353h02.prm
 LOGGING MODE: DEPTH DIRECTION: UP
 TOP DEPTH: 4551.750 ft BOTTOM DEPTH: 8142.250 ft

SYMMETRIC FILTER

MEASUREMENT TYPE	PARAMETER	VALUE	UNITS	INTERVAL (ft)	
GR	FILTER ()	medium (1)		TOP	BOTTOM

RPM PROCESSING

MEASUREMENT TYPE	PARAMETER	VALUE	UNITS	INTERVAL (ft)	
PNC Parameters	BOREHOLE CONTENTS	FLUID		TOP	BOTTOM
	OPEN/CASED HOLE	CASED HOLE		"	"
	BOREHOLE SIZE	8.75	in	"	"
	CASING SIZE	4.50	in	"	"
	MATRIX	SANDSTONE		"	"
	CORRECTION BUFFER	11		"	"

CURVE DESCRIPTION REPORT

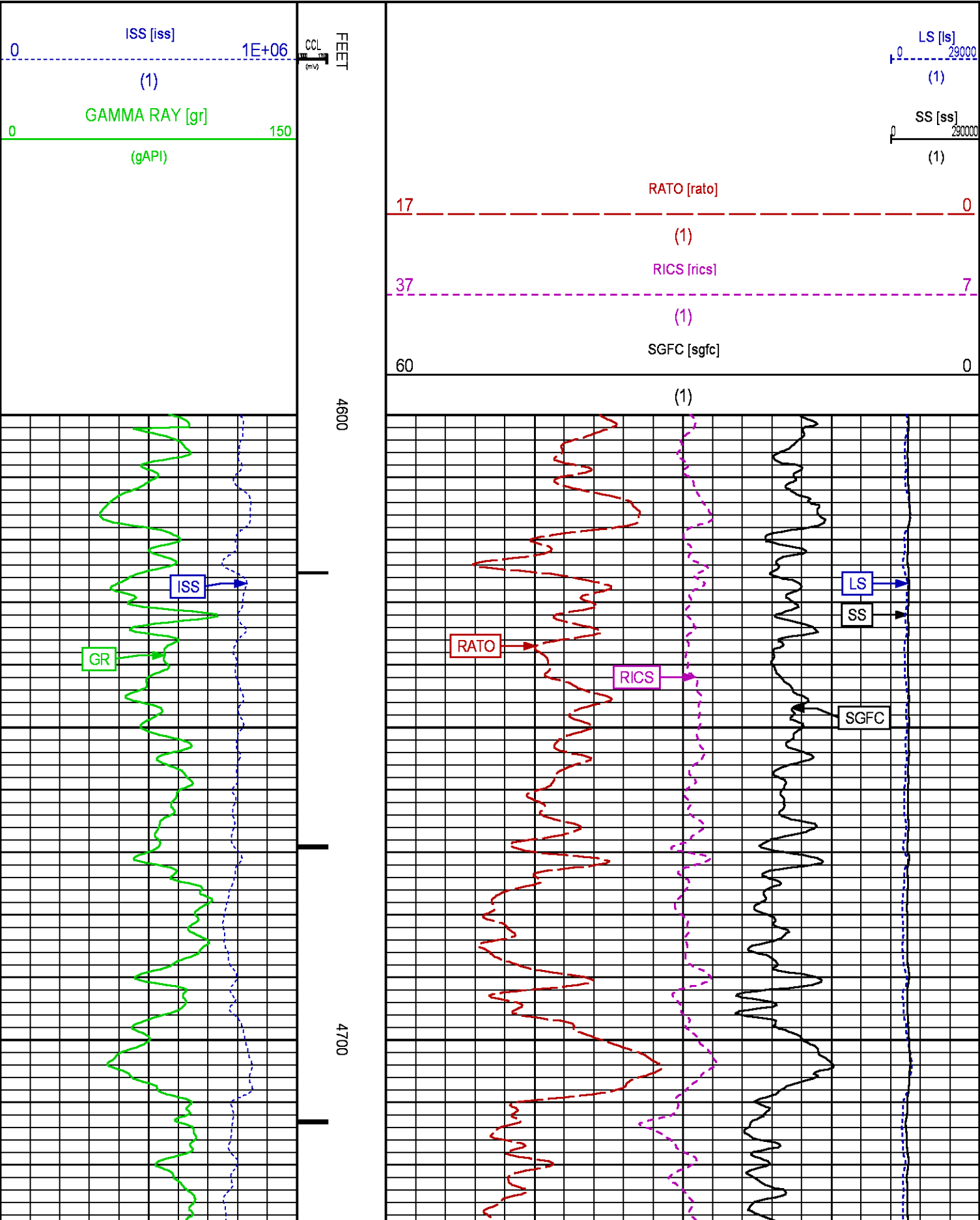
CURVE NAME	CREATION DATE	CURVE DESCRIPTION
F1:CCL	May 18 15:41:56 2014	CASING COLLAR LOCATOR
F1:GR	May 18 15:41:20 2014	GAMMA RAY
F1:ISS	May 18 15:41:21 2014	INELASTIC SHORT SPACE COUNT RATE
F1:LS	May 18 15:41:21 2014	LONG SPACE COUNT RATE
F1:RATO	May 18 15:41:42 2014	SHORT/LONG SPACE COUNT RATE RATIO
F1:RICS	May 18 15:41:55 2014	SHORT SPACE INELASTIC TO CAPTURE COUNT RATE RATIO (ISS/CSS)
F1:SGFC	May 18 15:41:56 2014	CORRECTED FORMATION SIGMA
F1:SS	May 18 15:41:56 2014	SHORT SPACE COUNT RATE

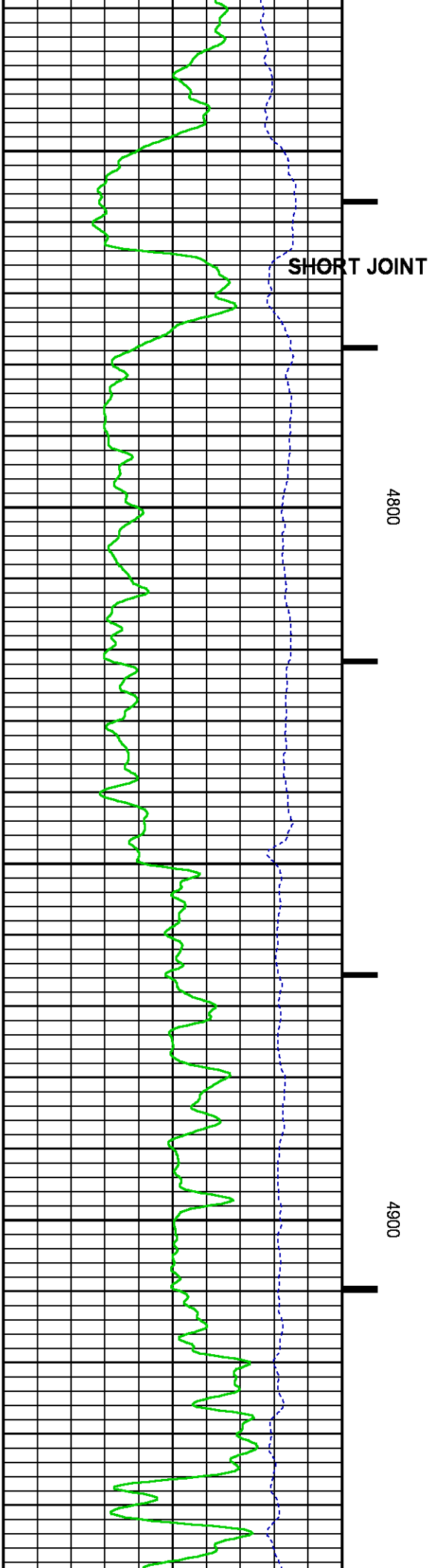
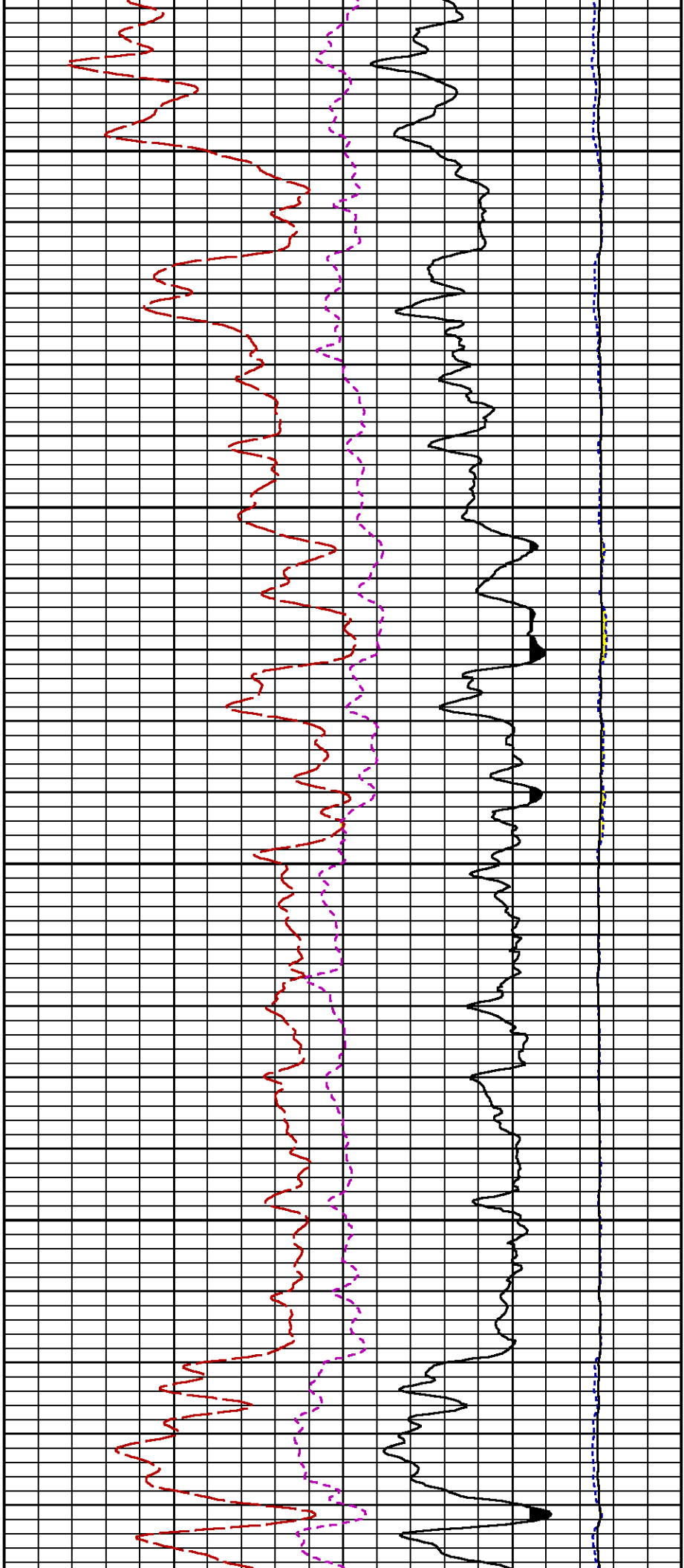
CURVE MEASURE POINT OFFSET

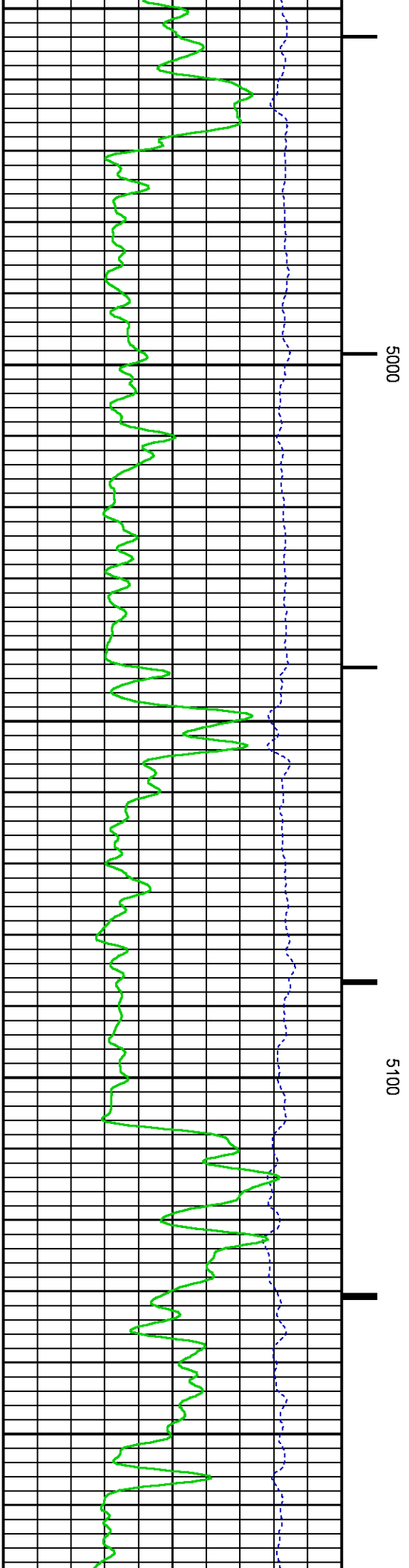
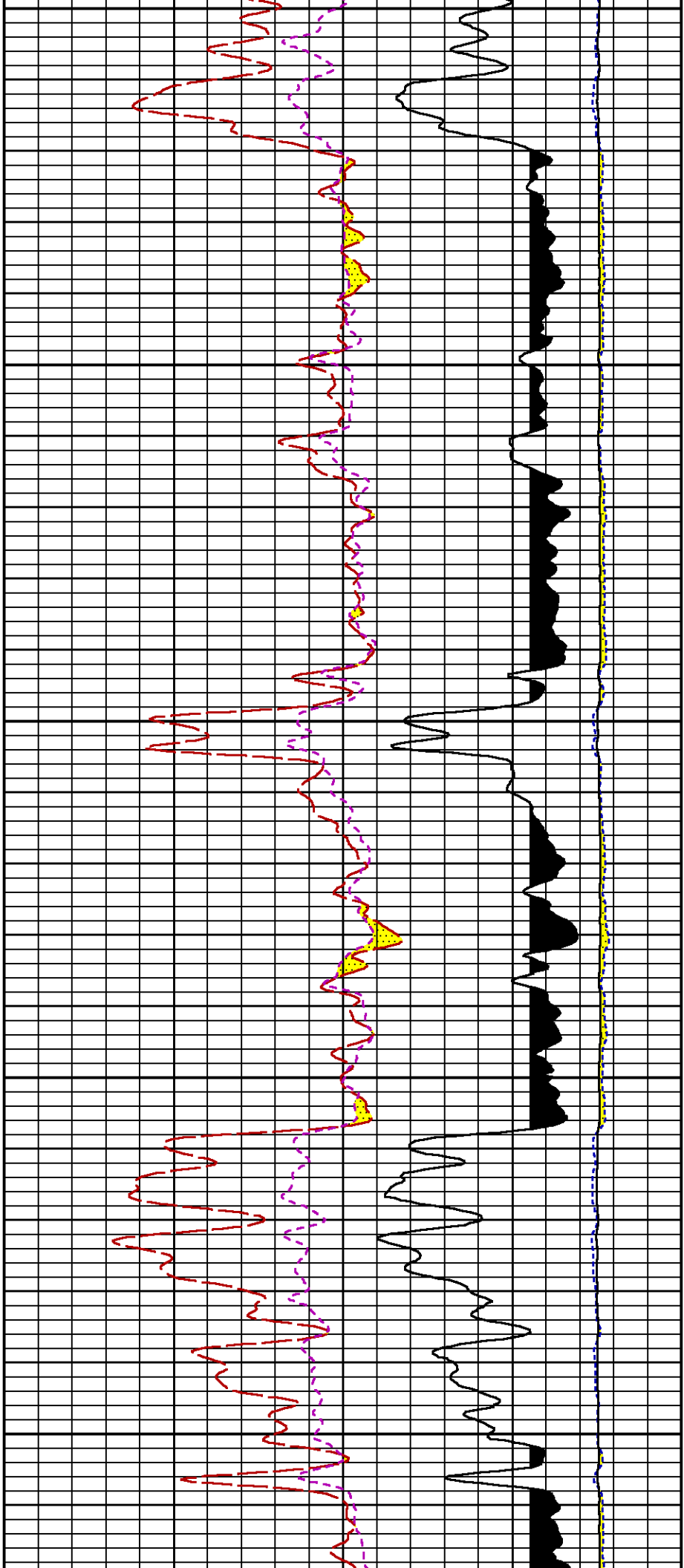
CURVE	OFFSET (ft)	CURVE	OFFSET (ft)	CURVE	OFFSET (ft)	CURVE	OFFSET (ft)
CCL	22.50	ISS	9.50	RATO	9.50	SGFC	9.50
GR	19.50	LS	9.50	RICS	9.50	SS	9.50

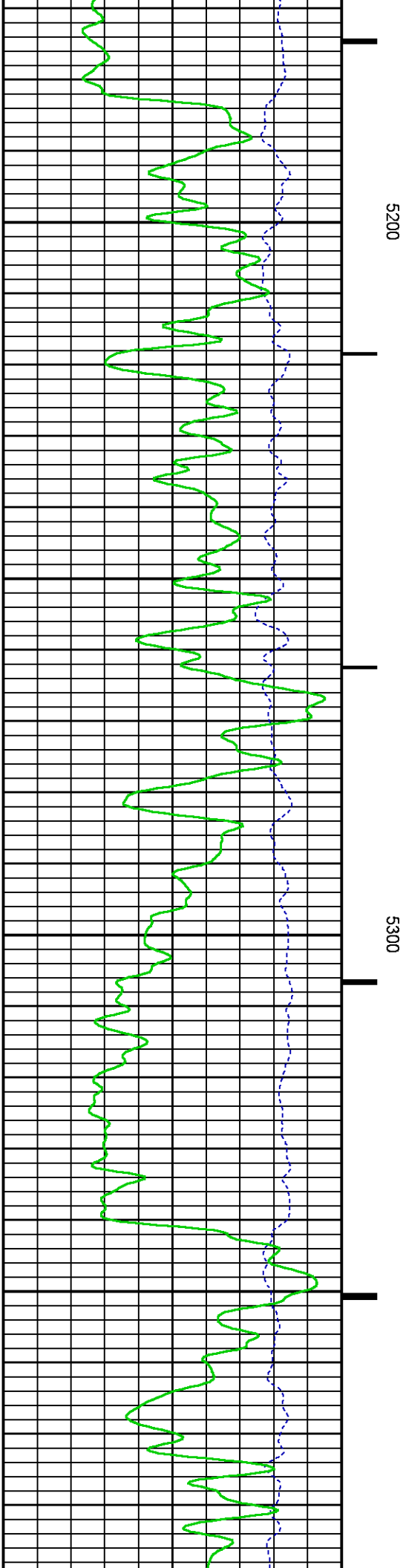
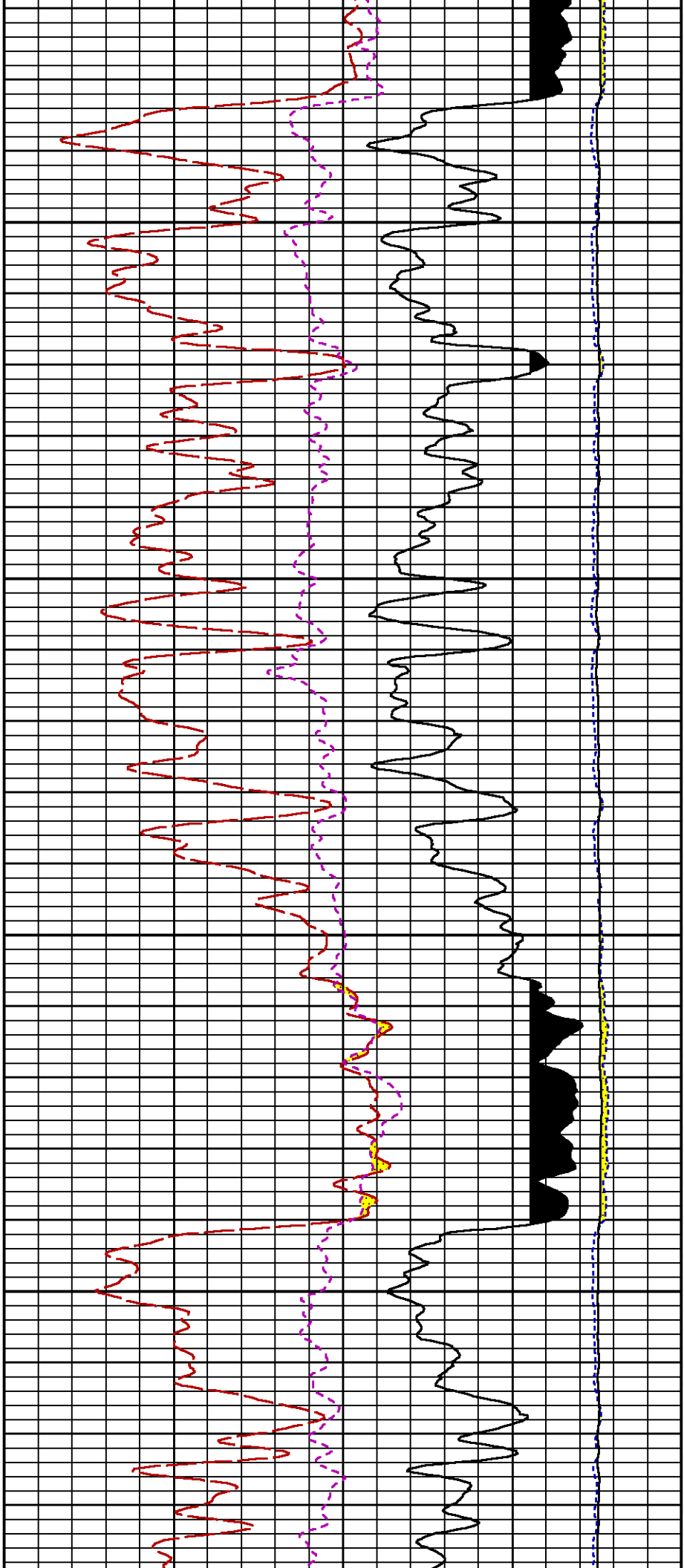
Presentation : HL6670:RPM_MAIN_PRESENTATION.fvpdf [5"/100' Scale]
 Plot Interval : 4600 - 8127 Feet

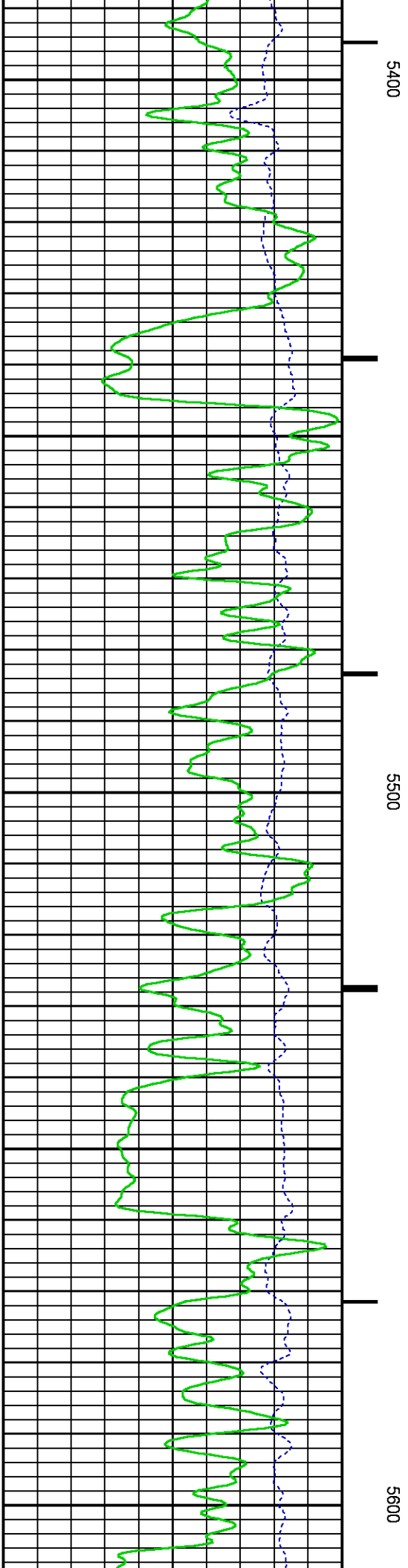
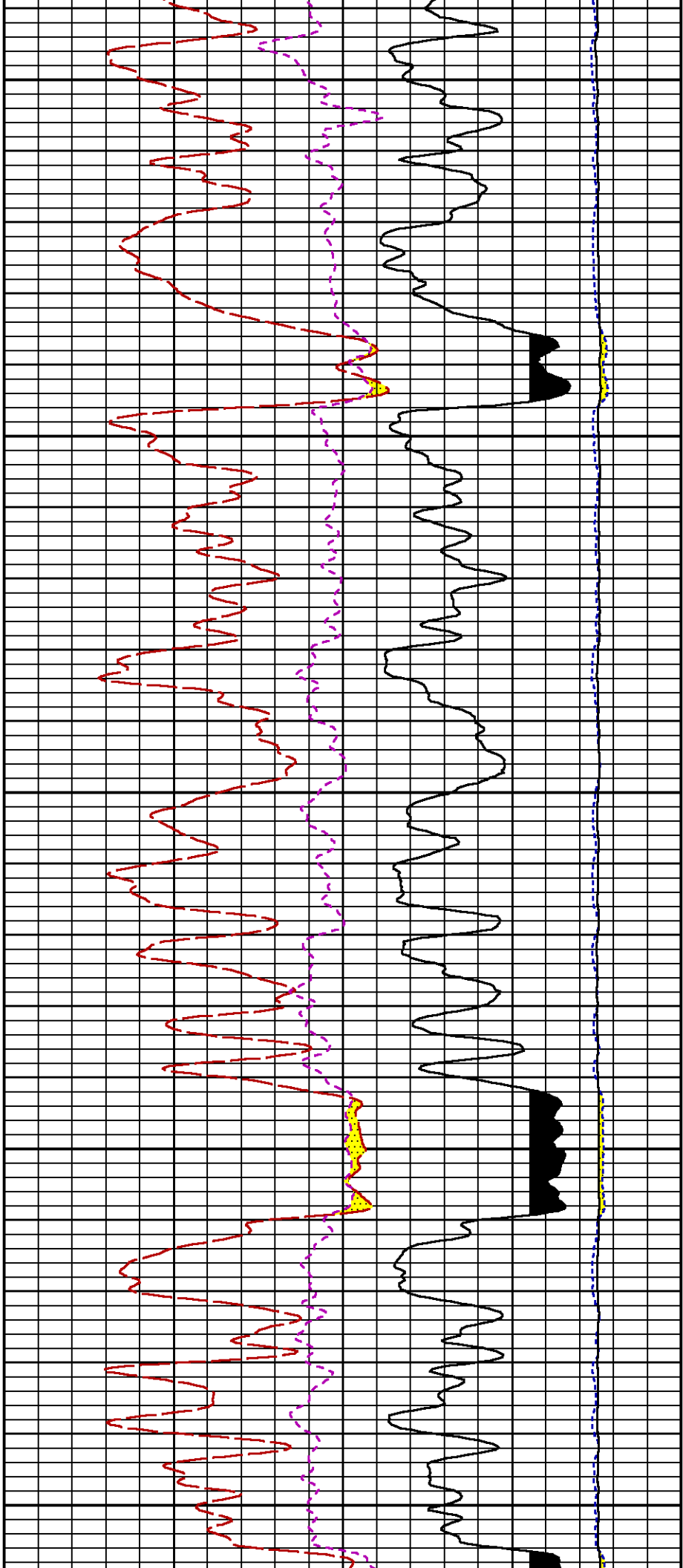
Data File 1 : F1 : HL6670:/dat1a/CH086321/RPM_MAIN.xtf
Created On : May 18 15:40:00 2014
Company : WPX ENERGY INC
Well : WPX ENERGY PA 544-3
Field : PARACHUTE
File Interval : 16.75 - 8150.75 Feet
OCT : n353h

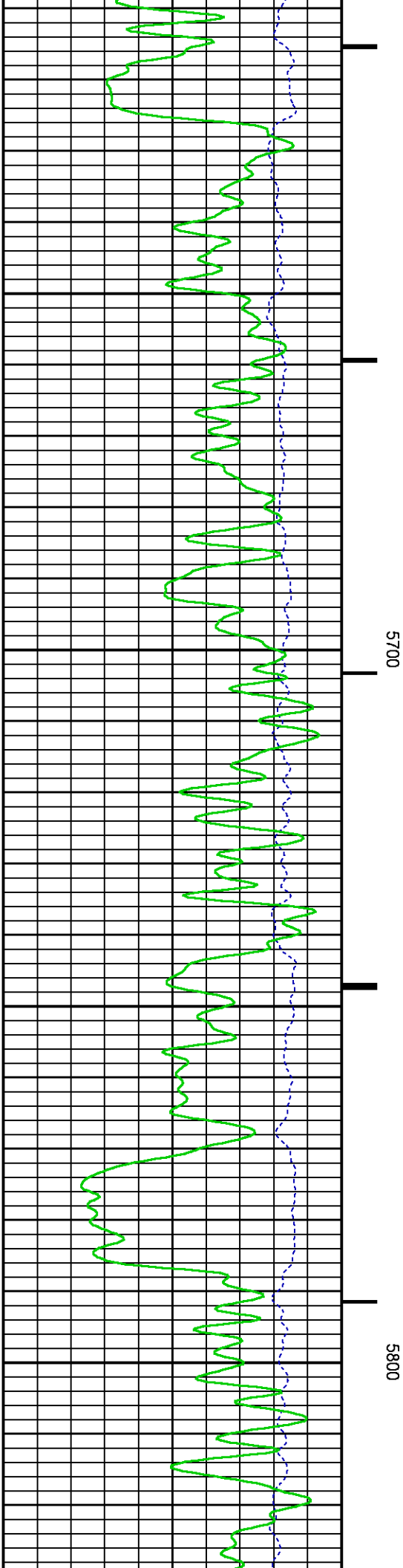
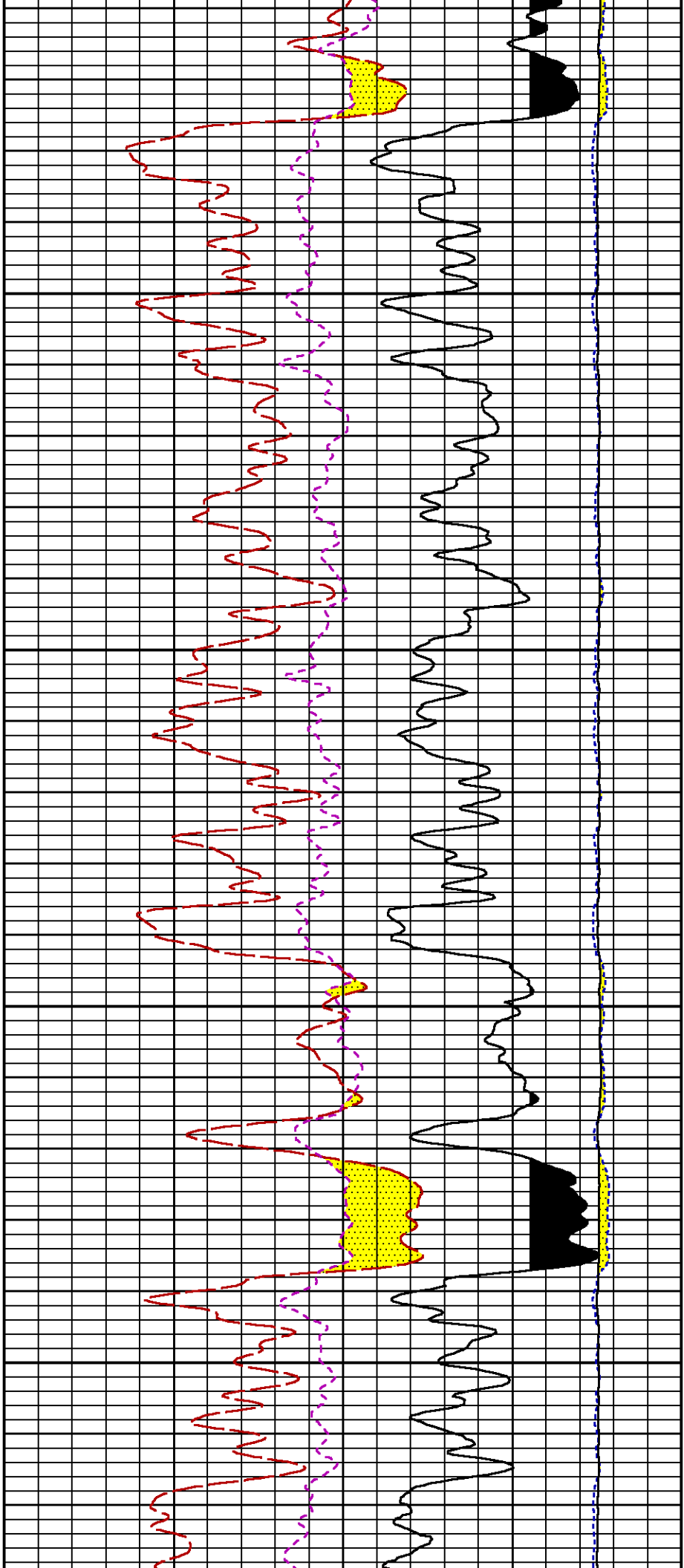


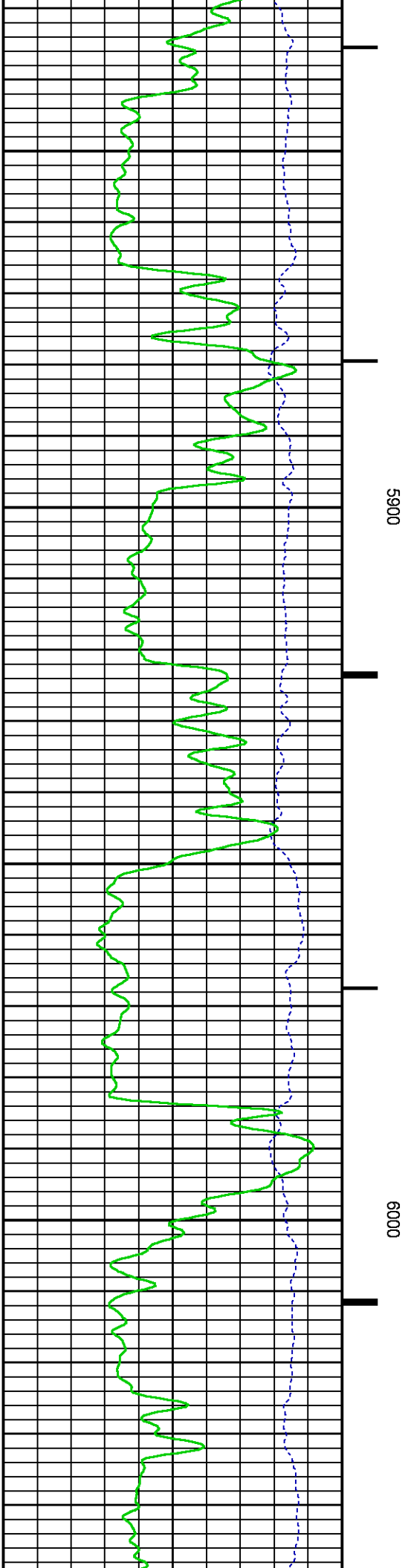
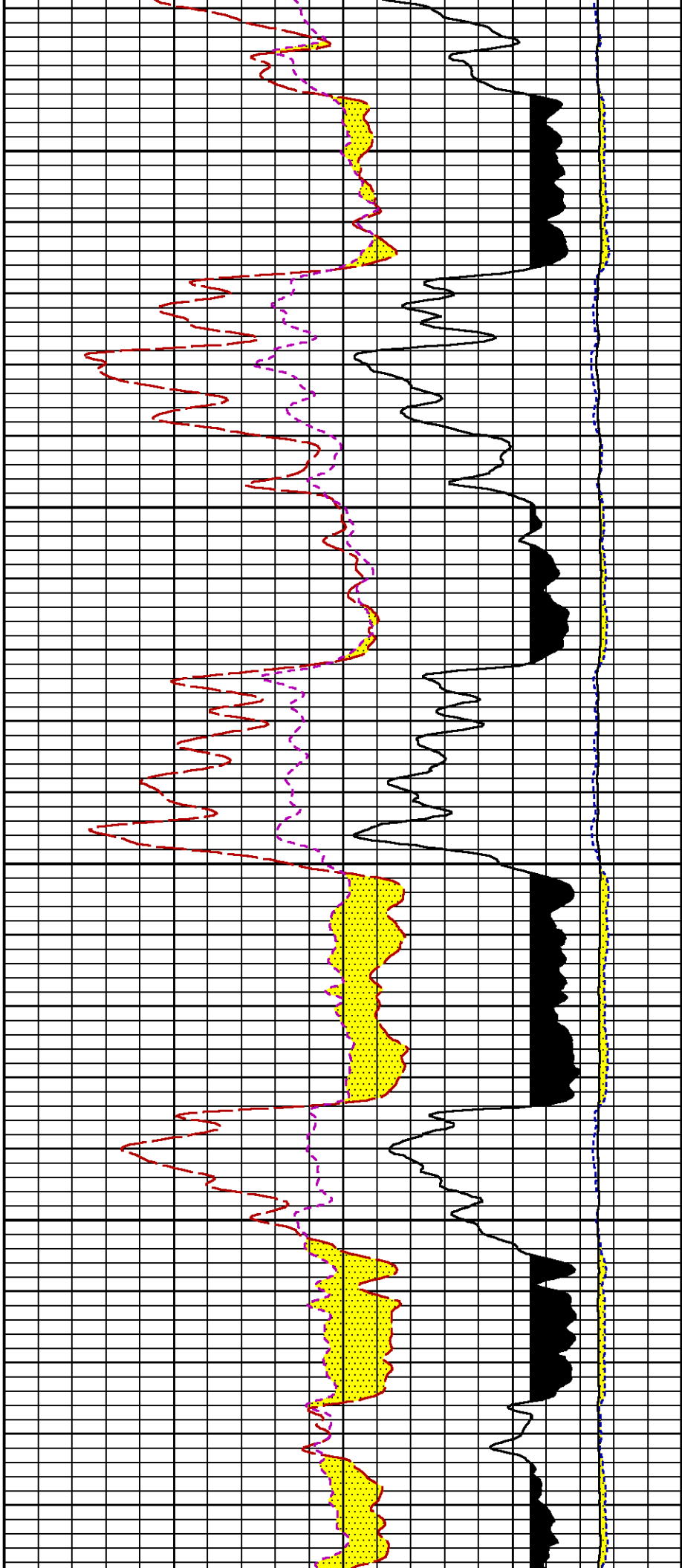


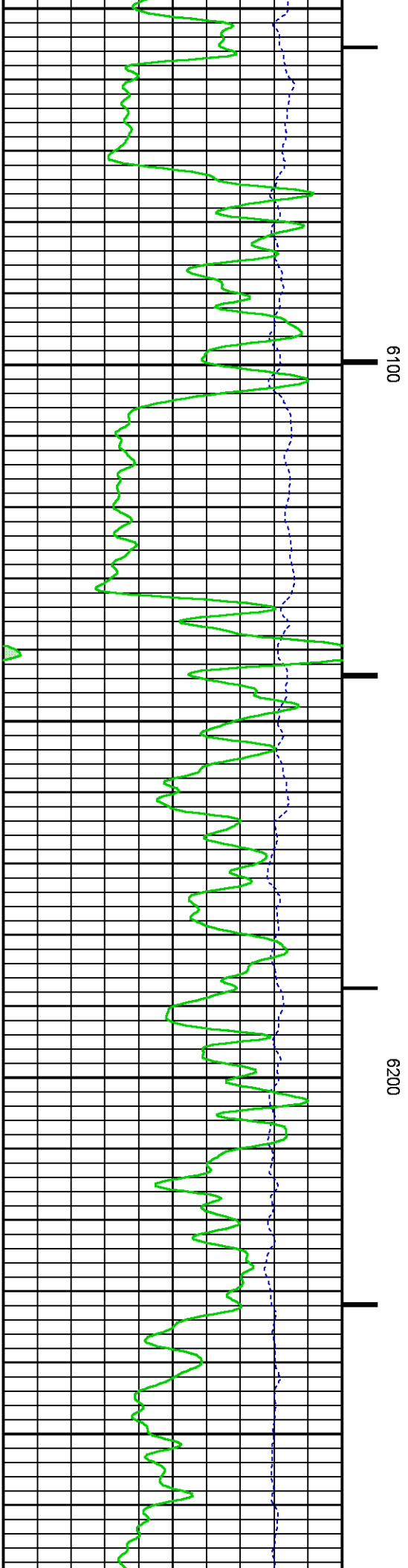
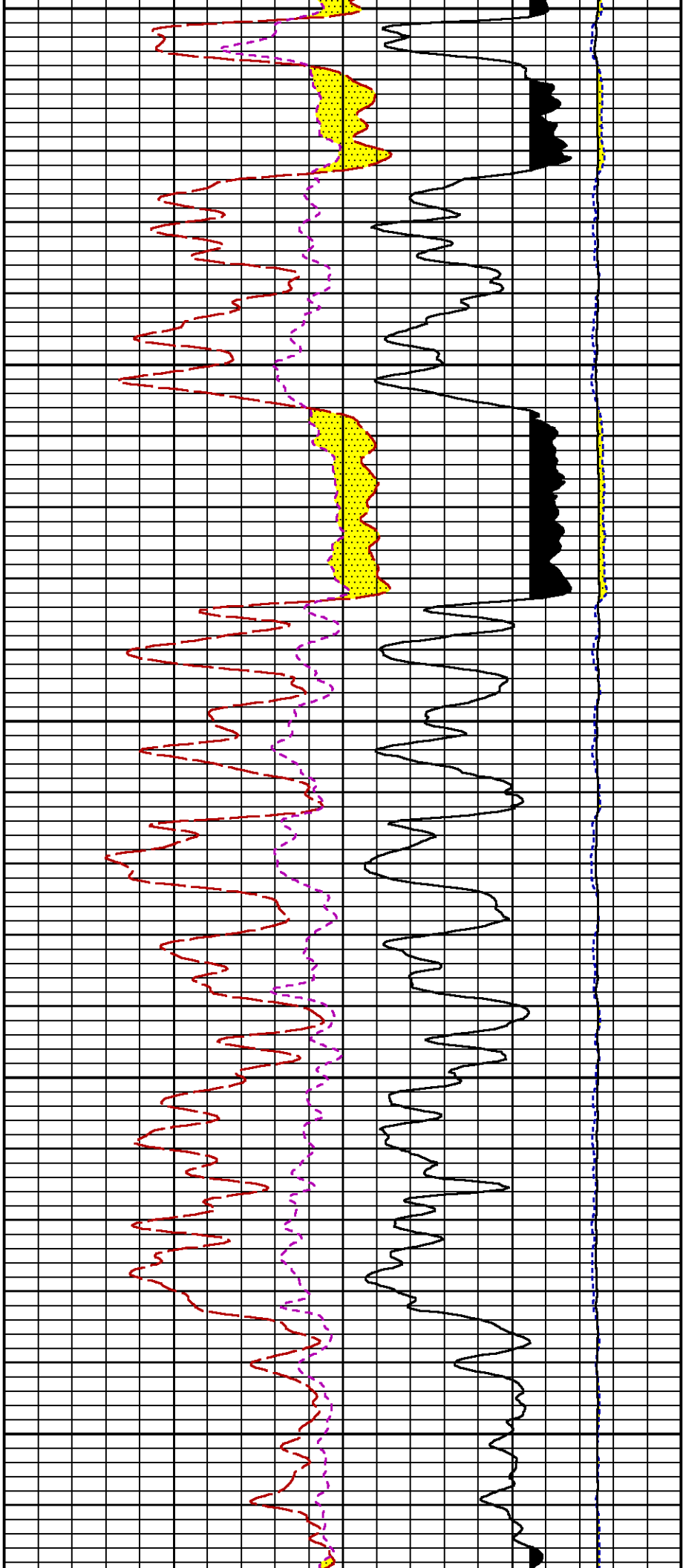


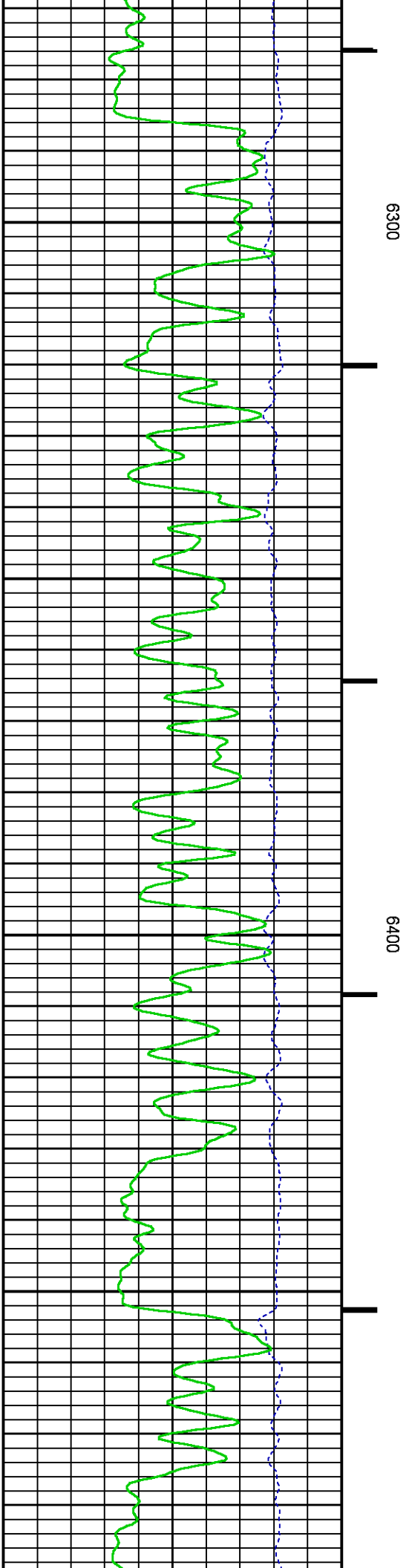
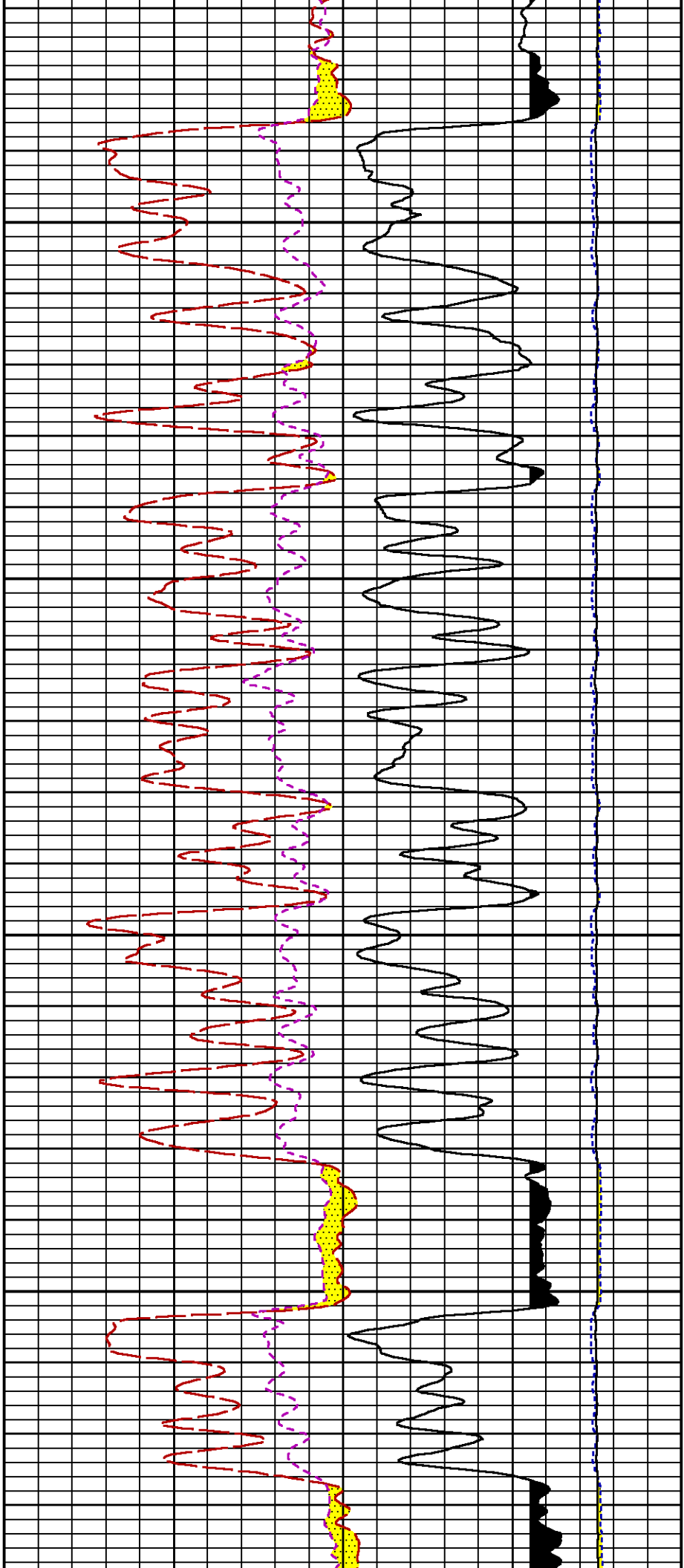


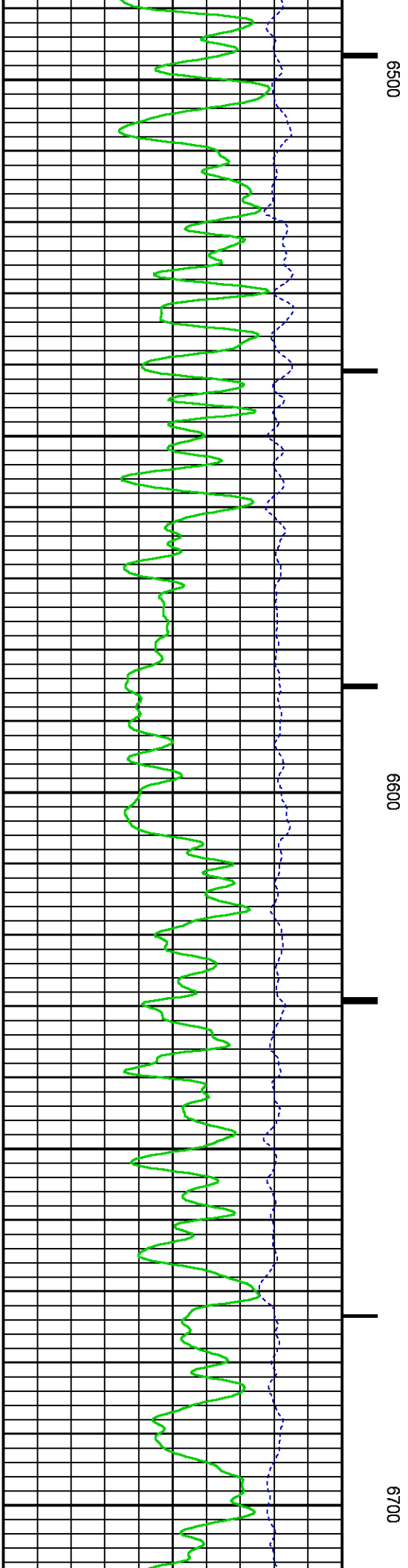
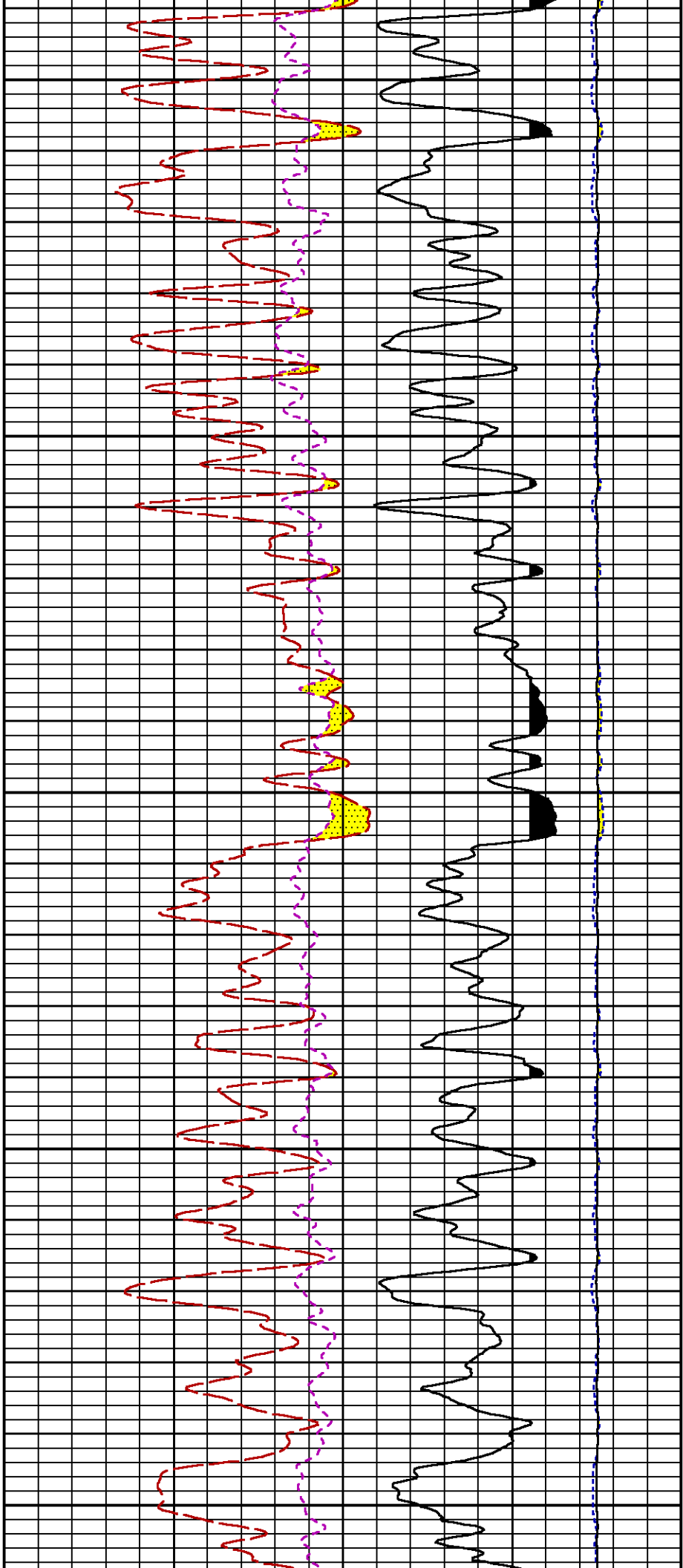


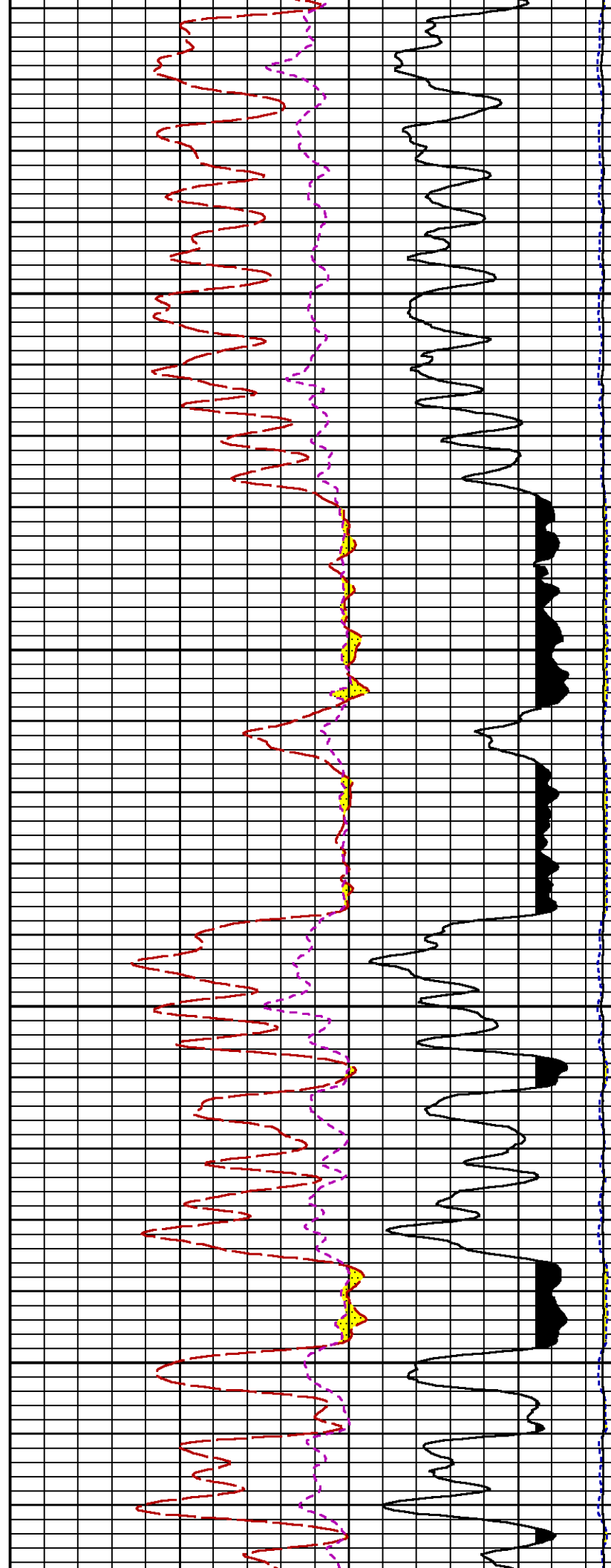
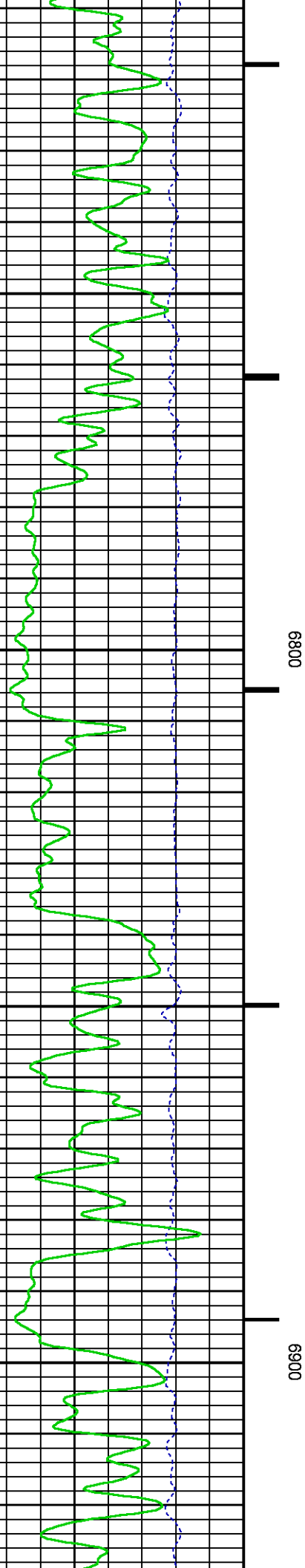


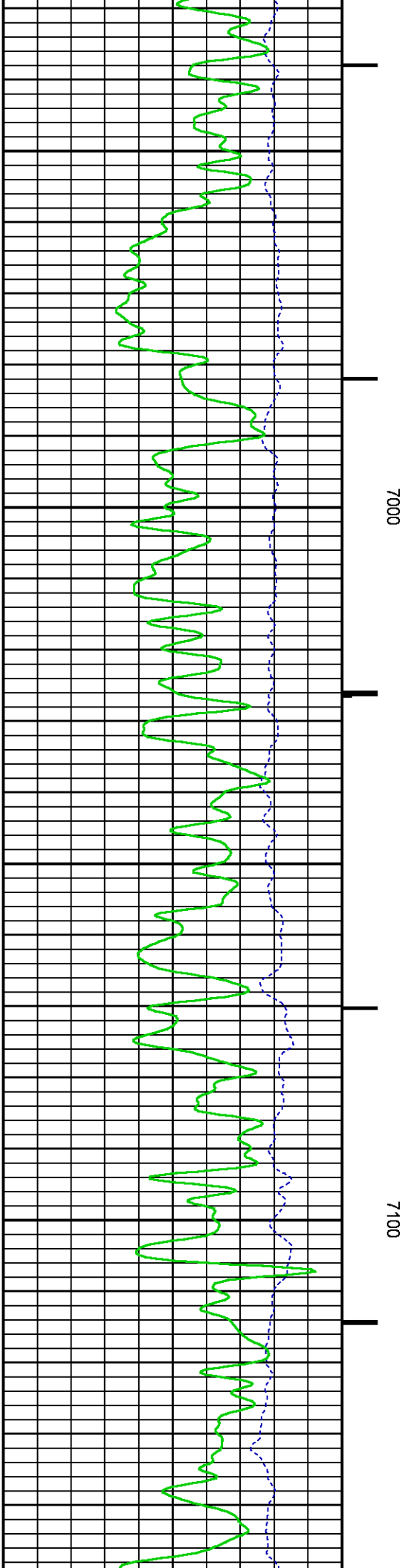
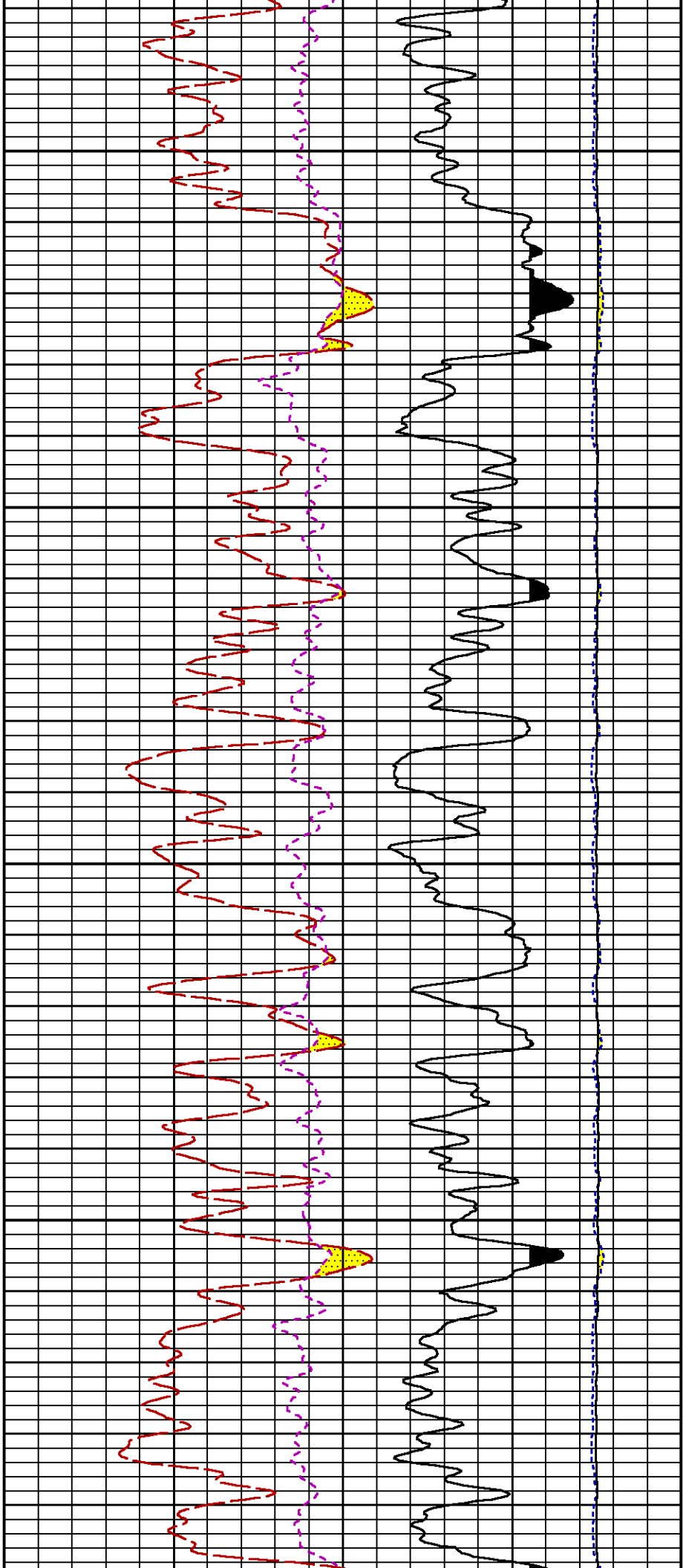


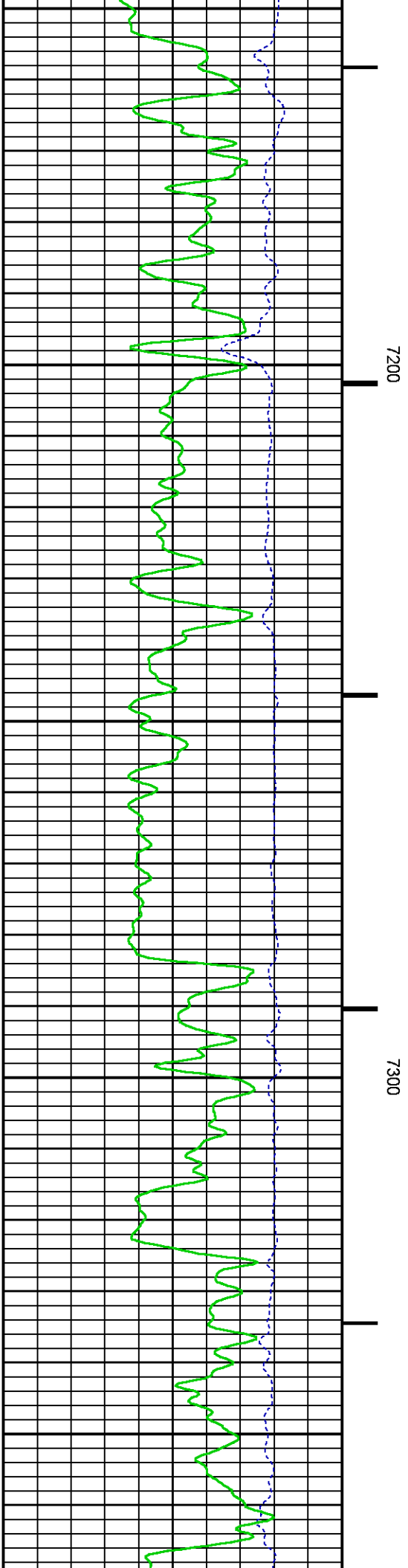
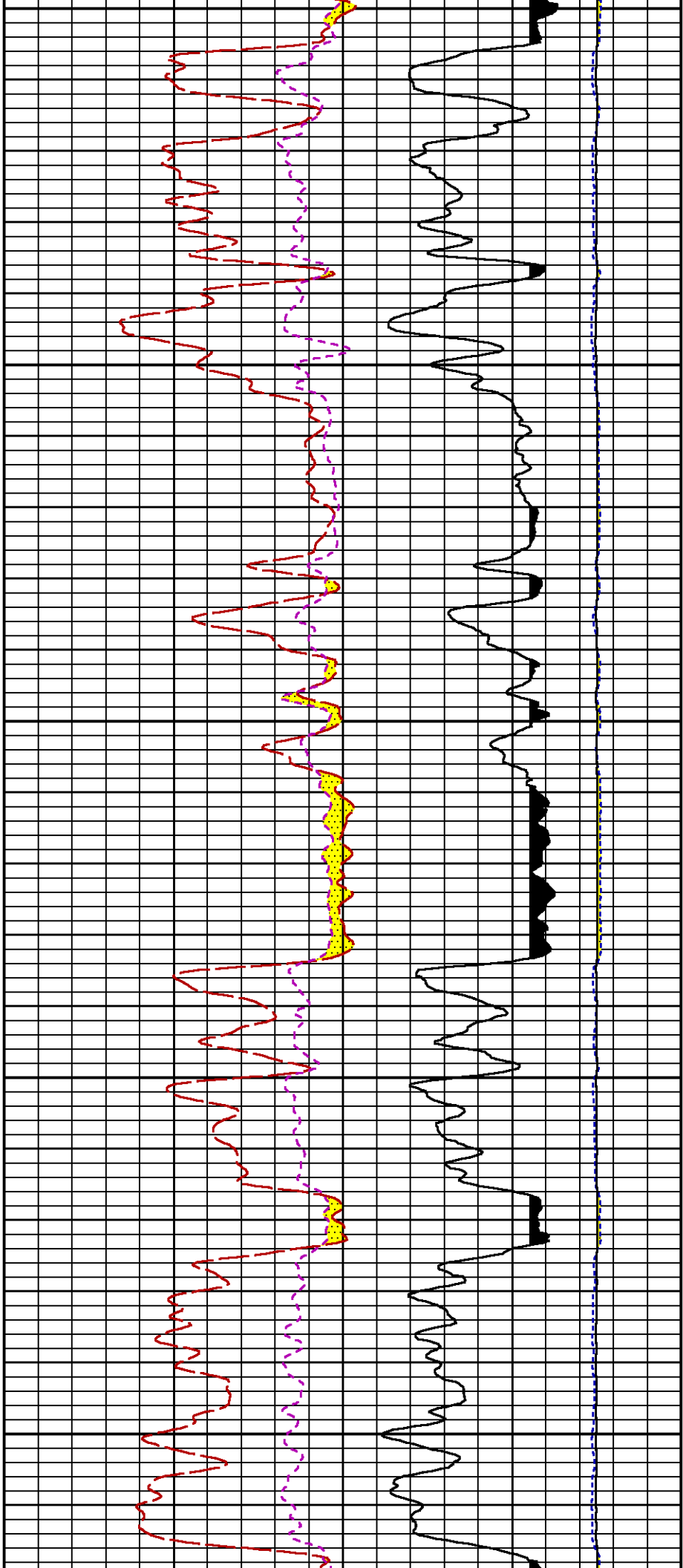


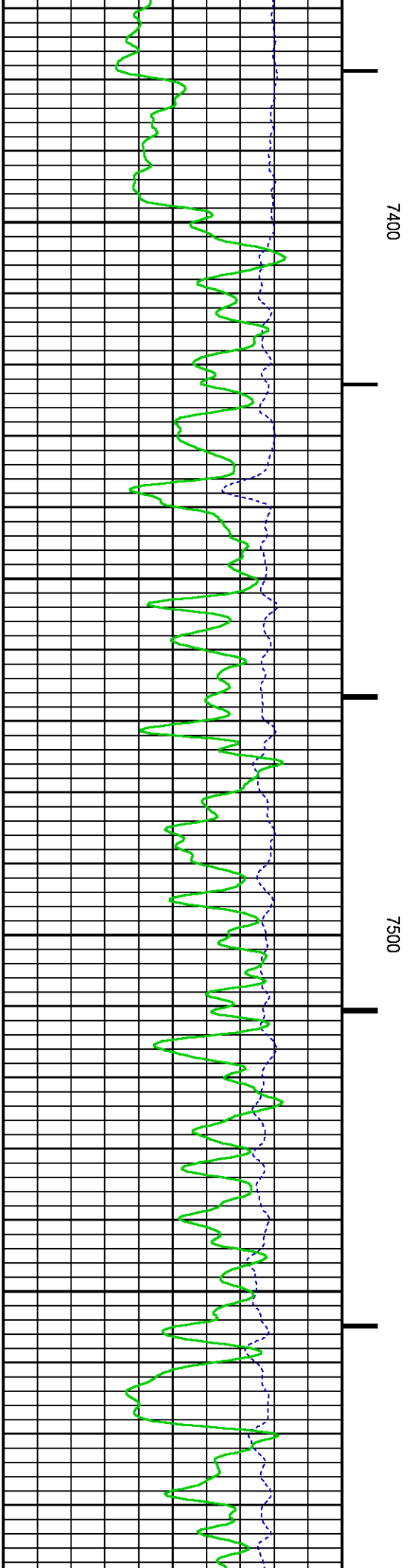
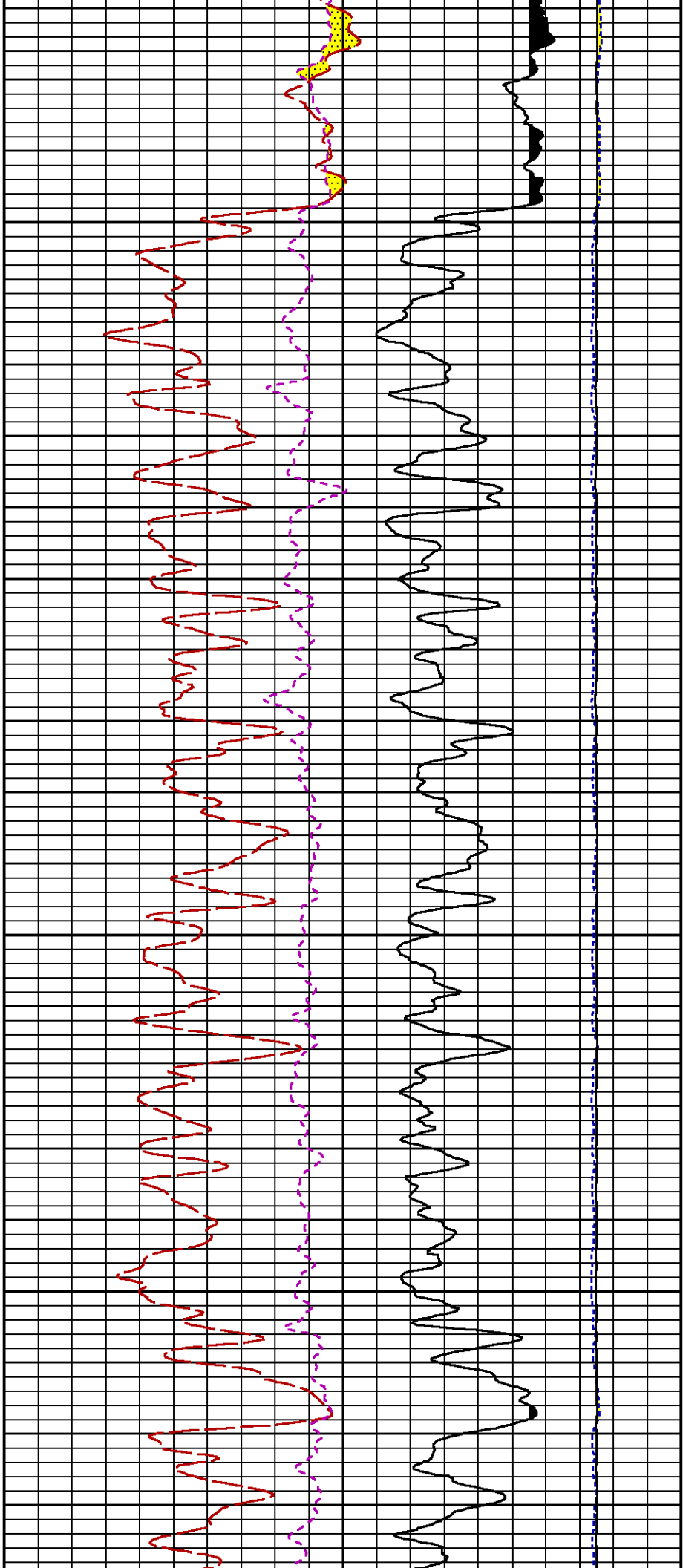


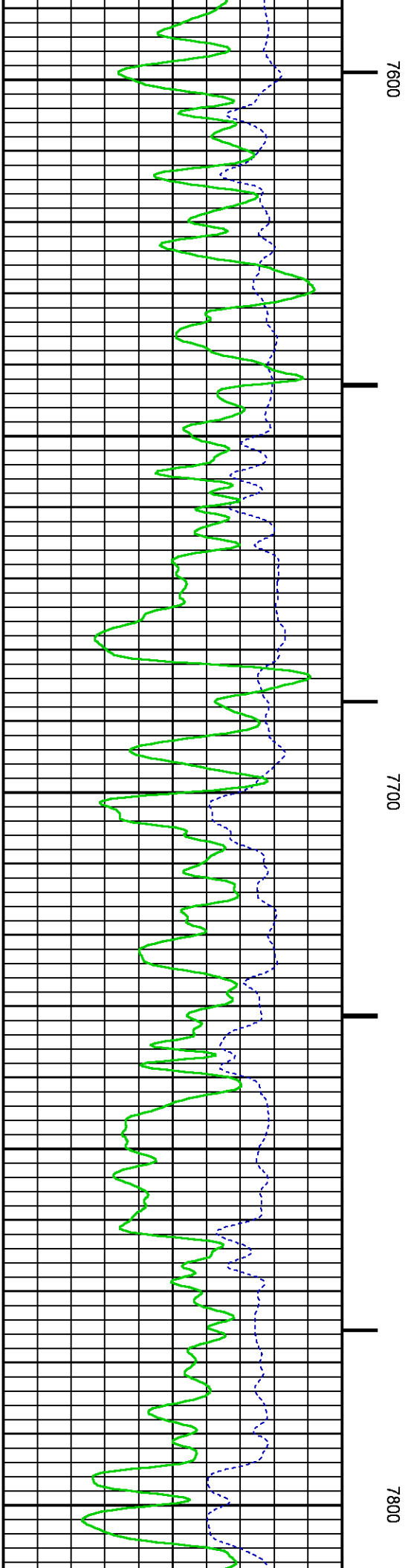
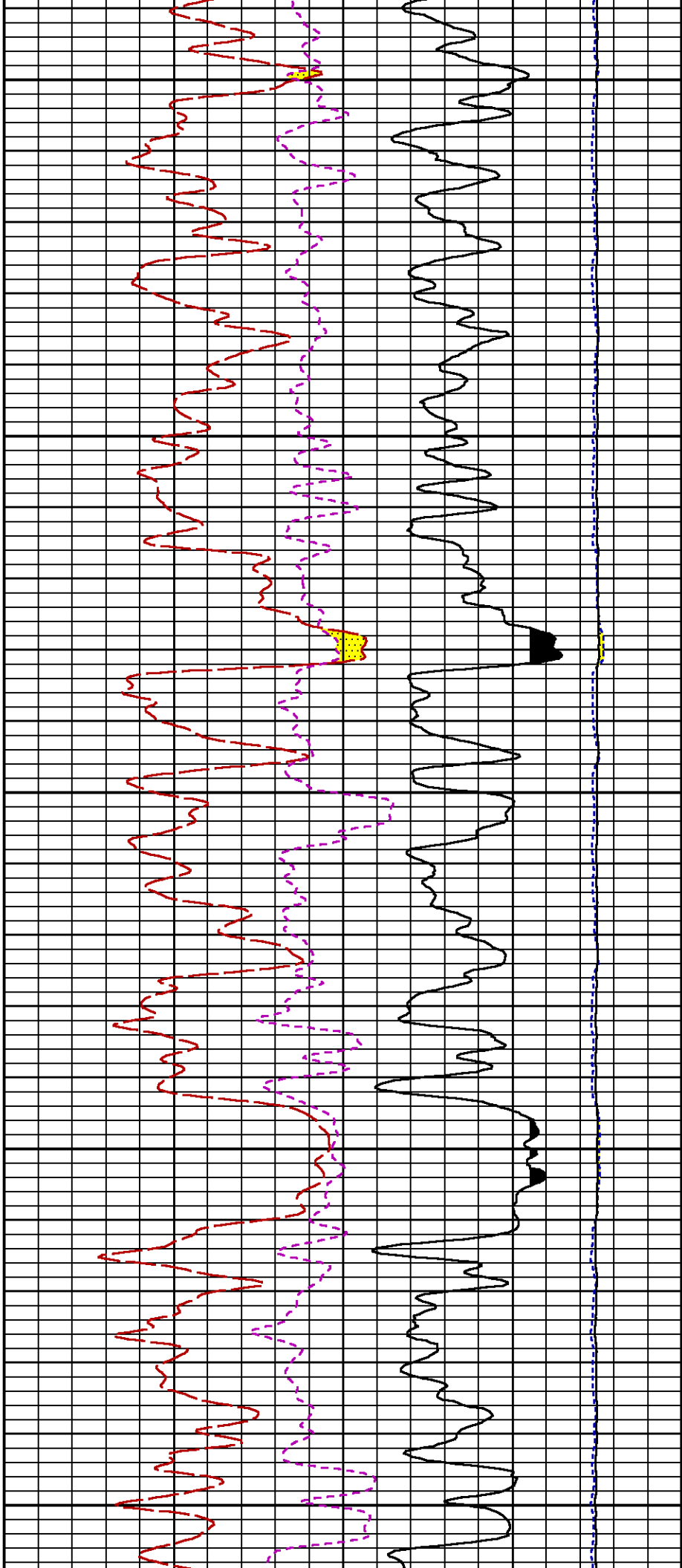


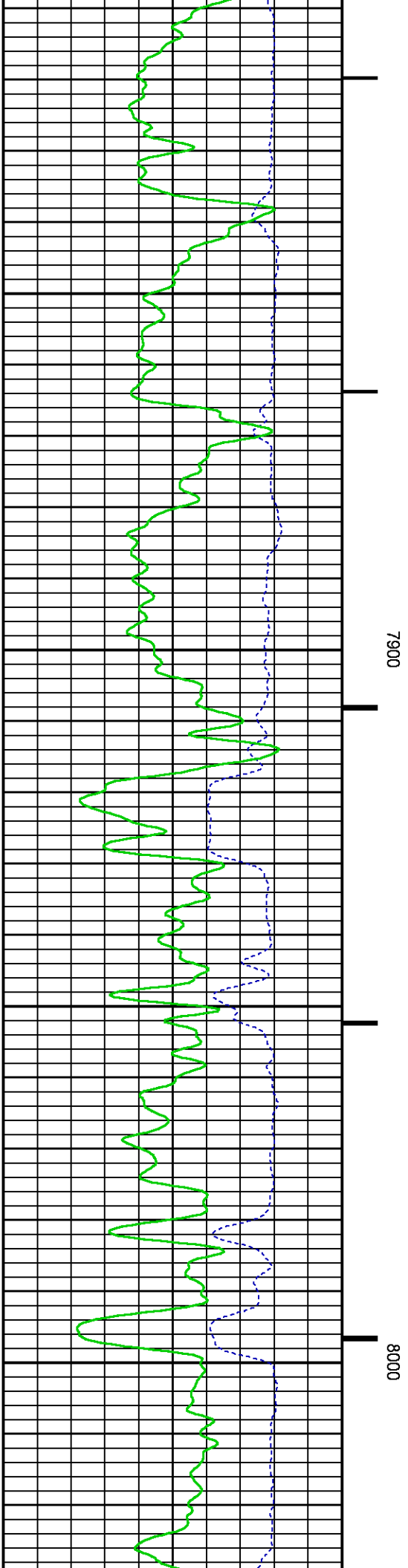
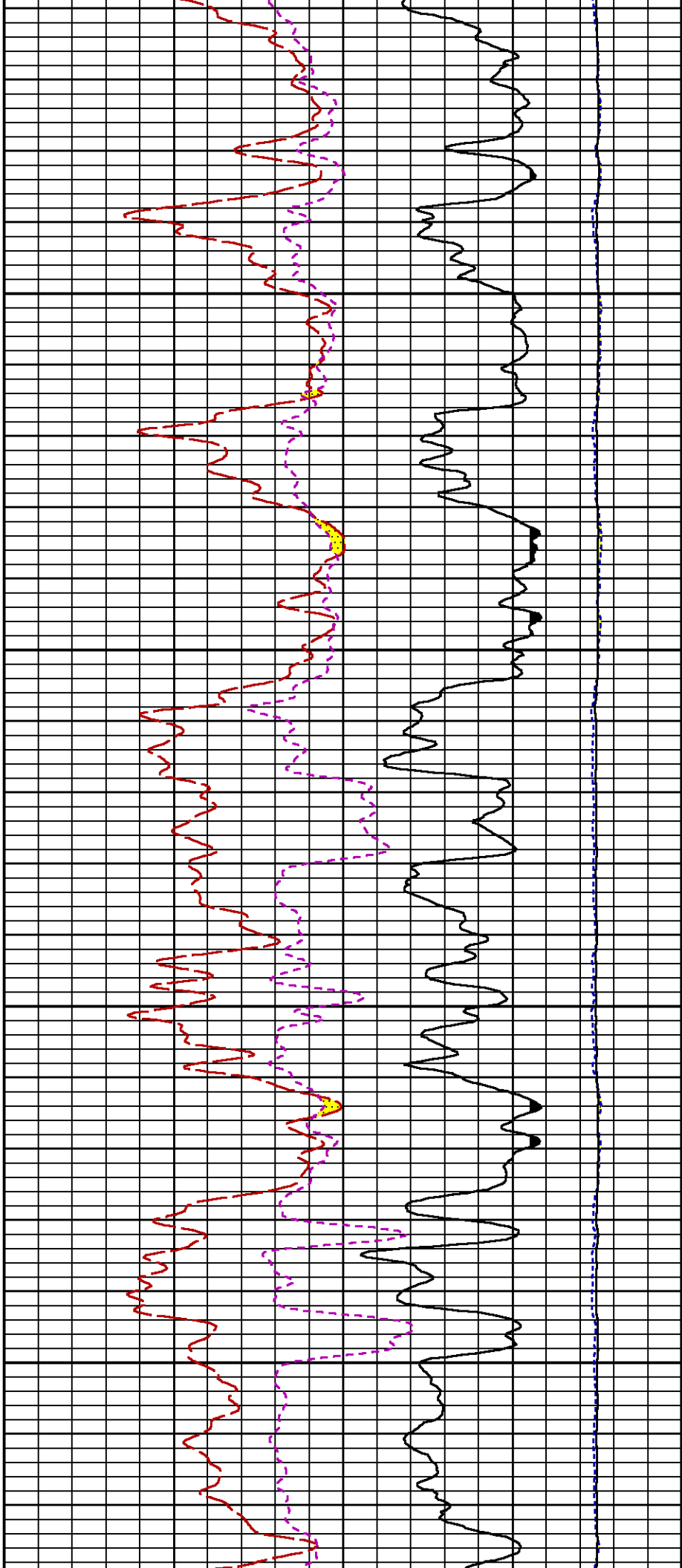


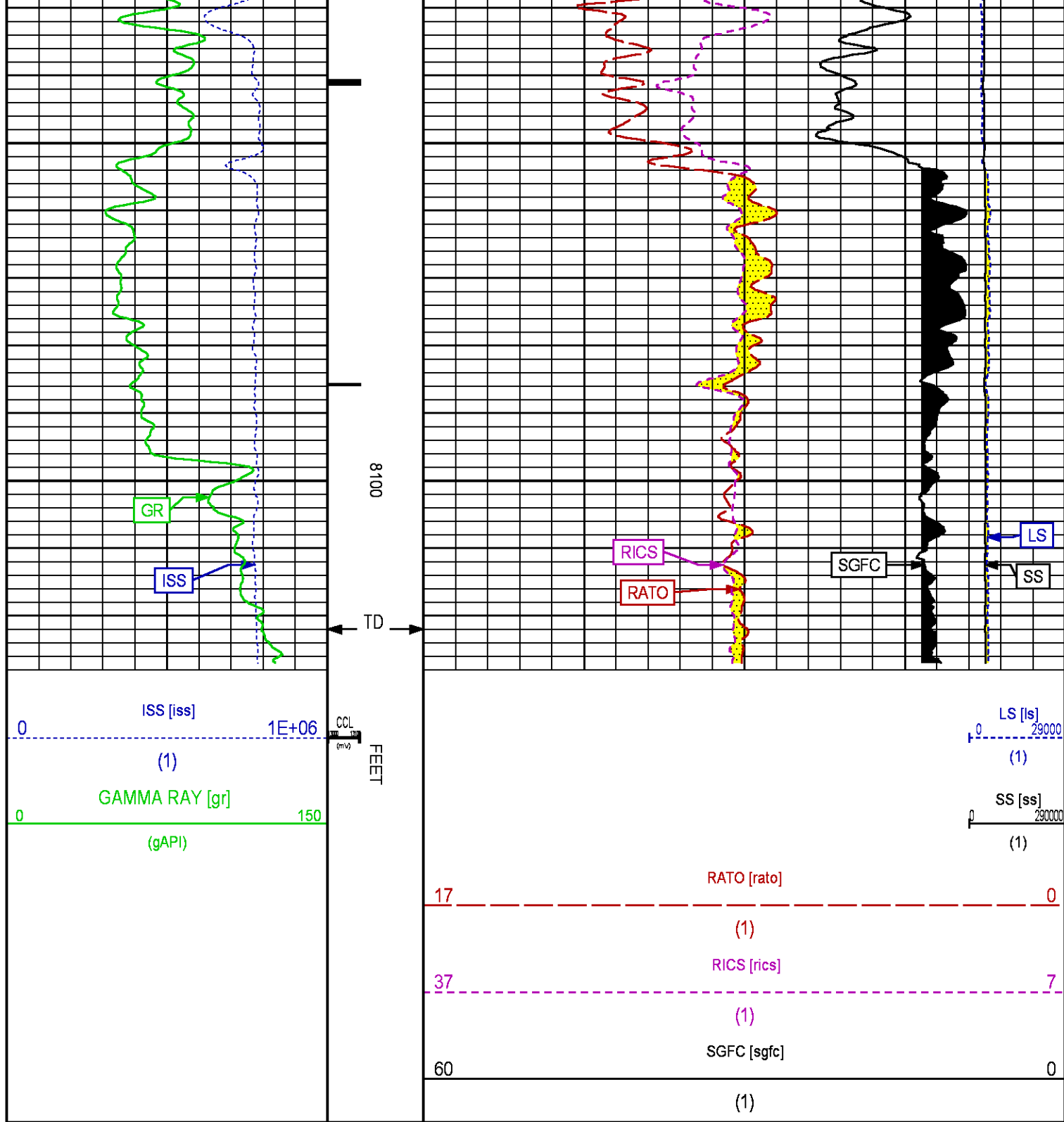












REPEAT SECTION PNC 3-D MODE

PARAMETER AND FILTER SUMMARY REPORT

FILE: /dat1a/CH086321/n353h01.prm
 LOGGING MODE: DEPTH DIRECTION: UP
 TOP DEPTH: 7095.750 ft BOTTOM DEPTH: 7441.000 ft

SYMMETRIC FILTER

MEASUREMENT TYPE	PARAMETER	VALUE	UNITS	INTERVAL (ft)
GR	FILTER ()	medium (1)		TOP BOTTOM

RPM PROCESSING

MEASUREMENT TYPE	PARAMETER	VALUE	UNITS	INTERVAL (ft)
PNC Parameters	BOREHOLE CONTENTS	FLUID		TOP BOTTOM
	OPEN/CASED HOLE	CASED HOLE		" "
	BOREHOLE SIZE	8.75	in	" "
	CASING SIZE	4.50	in	" "
	MATRIX	SANDSTONE		" "
	CORRECTION BUFFER	11		" "

CURVE DESCRIPTION REPORT

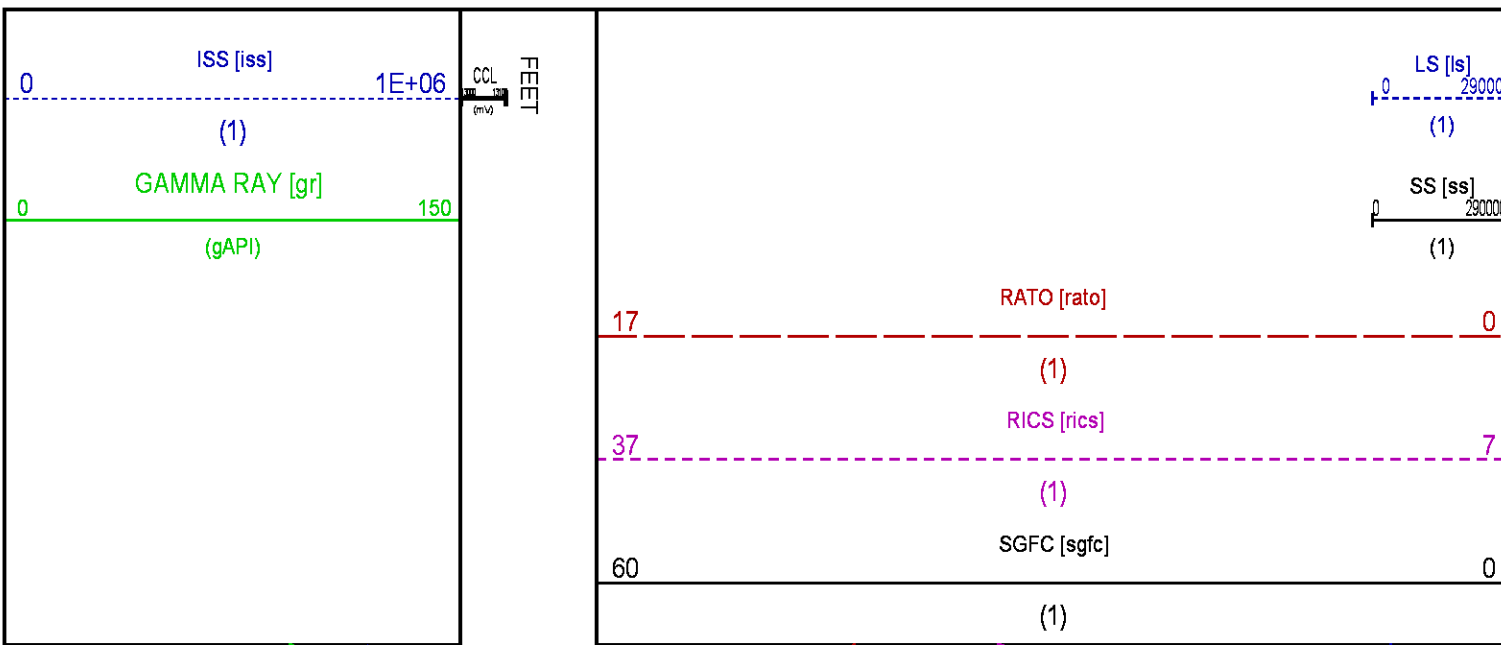
CURVE NAME	CREATION DATE	CURVE DESCRIPTION
F1:CCL	May 17 13:19:33 2014	CASING COLLAR LOCATOR
F1:GR	May 17 13:19:33 2014	GAMMA RAY
F1:ISS	May 17 13:19:33 2014	INELASTIC SHORT SPACE COUNT RATE
F1:LS	May 17 13:19:33 2014	LONG SPACE COUNT RATE
F1:RATO	May 17 13:19:33 2014	SHORT/LONG SPACE COUNT RATE RATIO
F1:RICS	May 17 13:19:33 2014	SHORT SPACE INELASTIC TO CAPTURE COUNT RATE RATIO (ISS/CSS)
F1:SGFC	May 17 13:19:33 2014	CORRECTED FORMATION SIGMA
F1:SS	May 17 13:19:33 2014	SHORT SPACE COUNT RATE

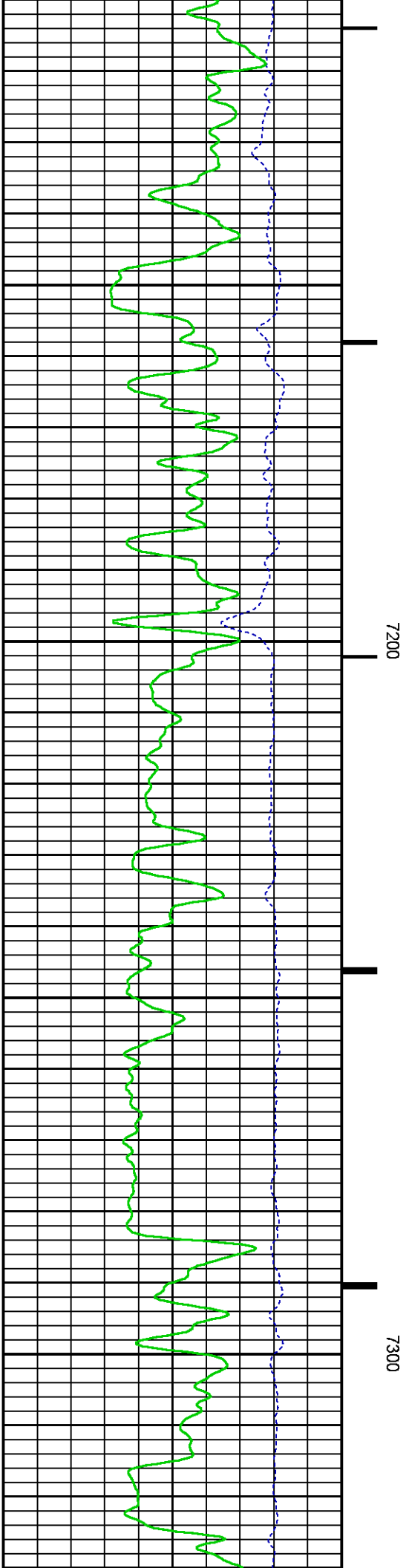
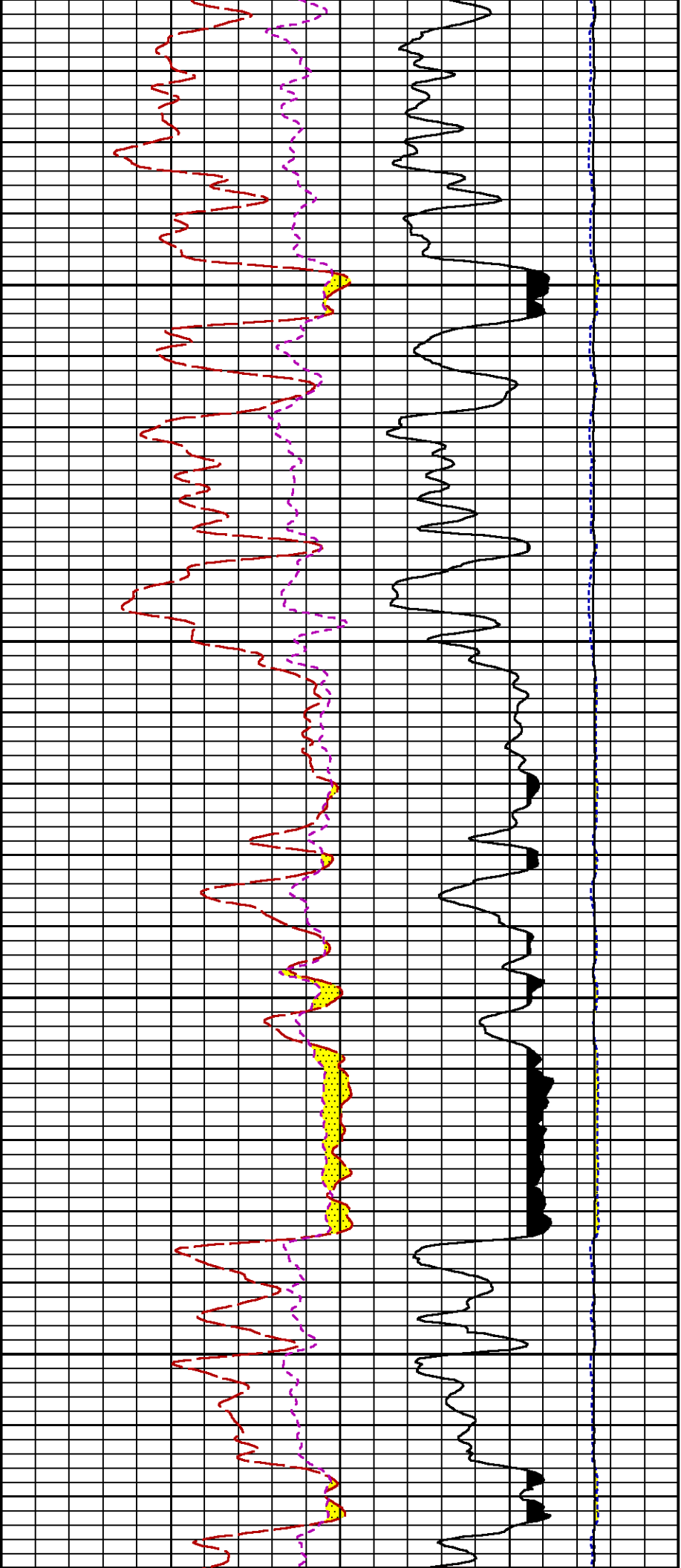
CURVE MEASURE POINT OFFSET

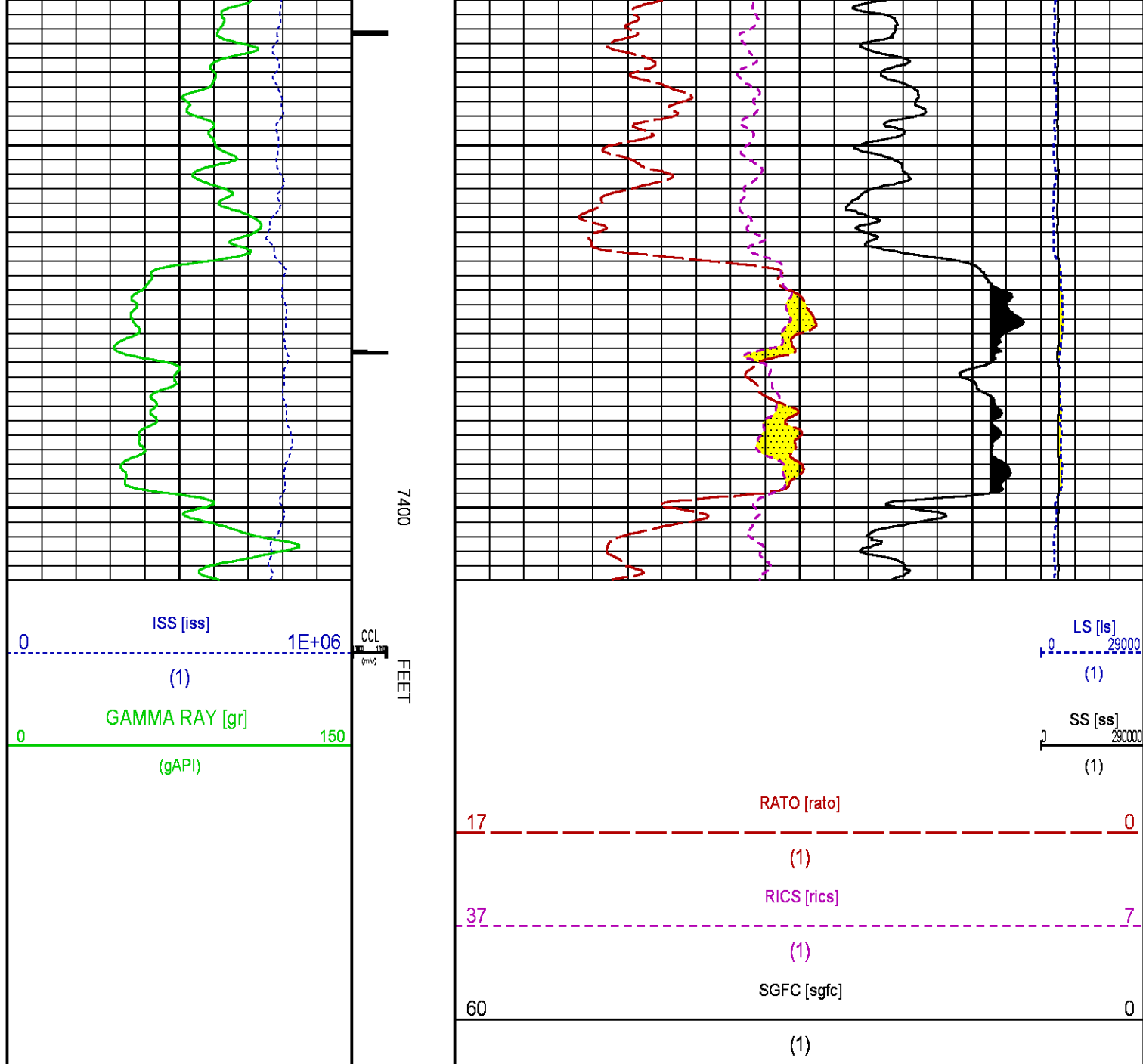
CURVE	OFFSET (ft)	CURVE	OFFSET (ft)	CURVE	OFFSET (ft)	CURVE	OFFSET (ft)
CCL	22.50	ISS	9.50	RATO	9.50	SGFC	9.50
GR	19.50	LS	9.50	RICS	9.50	SS	9.50

Presentation : HL6670:/dat1a/CH086321/RPM_REPEAT_PRESENTATION.fvpdf [5"/100' Scale]
 Plot Interval : 7110 - 7410 Feet

Data File 1 : F1 : HL6670:/dat1a/CH086321/RPM_REPEAT.xtf
 Created On : May 17 13:19:33 2014
 Company : WPX ENERGY INC
 Well : WPX ENERGY PA 544-3
 Field : PARACHUTE
 File Interval : 7078.5 - 7447.25 Feet
 OCT : n353h







CALIBRATION / VERIFICATION SUMMARY

Source File: /dat1a/CH086321/RPM.lp1

GR PRIMARY CALIBRATION SUMMARY

TOOL #: 8262XA 10317216

DATE/TIME PERFORMED: Tue May 6 11:23:07 2014

UNIT #: 3880TA HL6670

CALB JIG #: 4702NK VBA-905

	BACKGROUND (cts/s)	CALBRTR ON (cts/s)	CR DIFF (cts/s)	MULT	BACKGROUND (gAPI)	CALBRTR ON (gAPI)	CALBRTR (gAPI)
GR	98.04	440.29	342.2	0.541	53.00	238.00	185

GR PRIMARY VERIFICATION SUMMARY

TOOL #: 8262XA 10317216

DATE/TIME PERFORMED: Tue May 6 11:27:45 2014

UNIT #: 3880TA HL 6670

VERI JIG #: 4702NK VBA-905

	BACKGROUND CALBRTR ON (cts/s)	MULT (cts/s)	BACKGROUND CALBRTR ON (gAPI)	DIFF. (gAPI)
GR	97.16	432.07	52.52	233.55
		0.541		181.04
				176.00 196.00

RPM_PNC_3D PRIMARY CALIBRATION SUMMARY

TOOL: 8283PA 10466231

DATE/TIME PERFORMED: Tue May 13 12:59:39 2014

UNIT: 3880TA HL6670

CALIBRATOR: 2437XB 112674

SOURCE: 8281AA 11724361

HOURS: 8281AA 129

	ISS	Mtr Vltts (V)	SS Gain	LS Gain	XLS Gain	EA Temp (degF)	Sync Delay (usec)	RCAL
Raw Data	812300	121	2261	2282	2276	126	7	0.9741
Interpolated	1300000	144	2242	2276	2274			
	ISS	BKS	BKL	BKX	SGA1	SDA1	SGA2	SDA2
Raw Data	812300	7319	1132	152	26.17	0.14	24.21	0.31
					26.36 26.40	0.00 0.20	23.60 24.80	0.00 0.40
	ISS	ILS	IXS	SS	SS2	LS	CSS	CLS
Raw Data	812300	175079	27254	94990	33788	8764	57492	14038
Fit Quality %		1.514	1.530	1.479	1.439	1.666	1.344	1.597
	ISS	RBOR	RIN ISS/ILS	RIN13 ISS/IXS	RICS ISS/CSS	RATO SS/LS	RTWO SS2/LS	RONE CSS/CLS
Raw Data	812300	1.43	4.64	29.82	14.13	10.84	3.86	4.10
		1.42 1.46	3.66 6.62	22.20 32.70	10.99 16.34	10.06 11.10	3.67 3.96	3.76 4.22
Fit Quality %		0.069	0.171	0.157	0.149	0.170	0.180	0.125
Reduced	1393172	1.43	4.66	29.95	14.19	10.86	3.86	4.10
		1.42 1.46	4.33 6.62	27.60 32.70	13.70 16.34	10.06 11.10	3.67 3.96	3.76 4.22

INSTRUMENT CONFIGURATION

Source File: /dat1a/CH086321/WPX_RPM-ldg

A3 CABLEHEAD	34.08'
Diameter : 1.37"	
PCM POWER SUPPLY	
Diameter : 1.70"	
Length : 3.86'	
Weight : 18 lbs	
Series : 8250EA	
Mnemonic : PCM	
TELEMETRY / CCL	
Diameter : 1.70"	
Length : 4.46'	
Weight : 20 lbs	
Series : 8248ED	
Mnemonic : PCM	
Measure Point: 1.00': CCL MP	CCL MP 26.03'
GAMMA RAY	
Diameter : 1.70"	
Length : 3.02'	
Weight : 15 lbs	
Series : 8262XA	
Mnemonic : GR	
Measure Point: 0.89': GR MP	GR MP 22.90'
RPM ELECTRONICS	
Diameter : 1.70"	
Length : 4.48'	
Weight : 16 lbs	
Series : 8281EA	
Mnemonic : RPM	

RPM C DETECTOR SECTION

Diameter : 1.70"
Length : 9.40'
Weight : 41 lbs
Series : 8283PA
Mnemonic : RPM
Measure Point: 5.45': XLS DETECTOR
Measure Point: 5.04': LS DETECTOR
Measure Point: 4.79': SS DETECTOR

XLS DETECTOR 13.58'
LS DETECTOR 13.16'
SS DETECTOR 12.91'

RPM SOURCE SECTION

Diameter : 1.70"
Length : 4.70'
Weight : 18 lbs
Series : 8281FA
Mnemonic : RPM

TEMPERATURE / PRESSURE


Diameter : 1.70"
Length : 3.30'
Weight : 13 lbs
Series : 8255XA
Mnemonic : SRPL
Measure Point: 1.52': TEMP MP

TEMP MP 1.65'
PRES MP

BULL PLUG 1 11/16

TOTAL LENGTH: 34.08'
TOTAL WEIGHT: 144 lbs
MAX DIAMETER: 0'1.70'

0.00'

	COMPANY	WPX ENERGY INC		FILE NO:	
	WELL	WPX ENERGY PA 544-3			US086321
	FIELD	PARACHUTE		API NO:	
	COUNTY	GARFIELD	STATE	CO	05045221350000
	LOCATION:		ELEVATIONS:		
SHL: 2023' FSL 244' FWL S2 T7S R95W		KB 5846 FT		S3 T7S R95W	
BHL: 244' FSL 509' FEL S3 T7S R95W		DF		PAD: GV 86-2	
SEC 3 TWP 7S RGE 95W		GL 5821 FT		RIG: AZTEC 1000	
		DATE		17-May-2014	