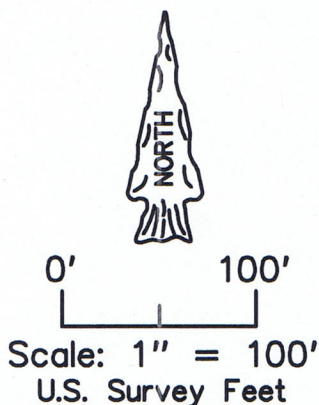
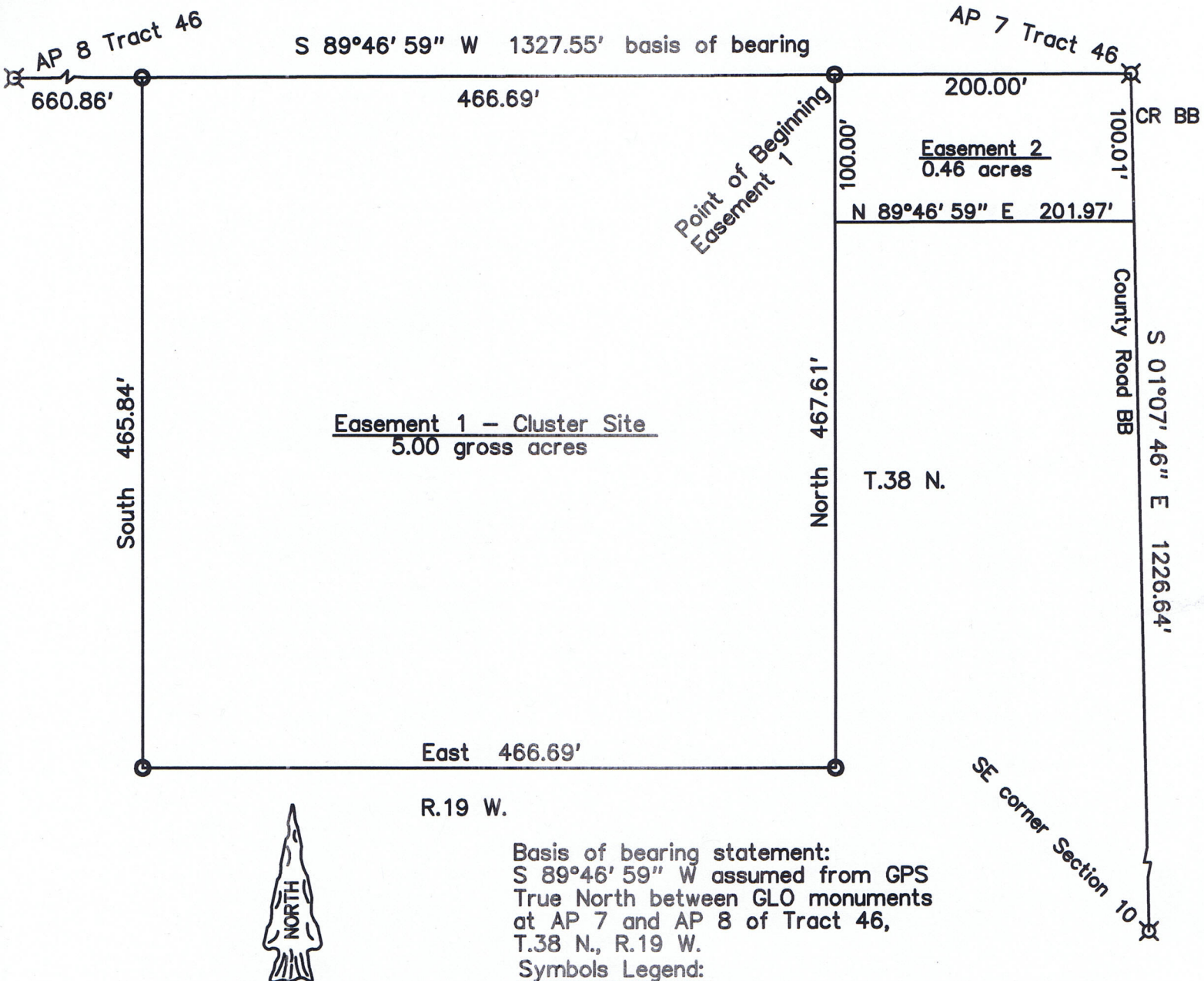


Kinder Morgan CO2 Company, LP  
 CB Cluster Site  
 Tract 46, SE 1/4 Section 10,  
 T.38 N., R.19 W., NMPM  
 Montezuma County, CO



Basis of bearing statement:  
 S 89°46' 59" W assumed from GPS  
 True North between GLO monuments  
 at AP 7 and AP 8 of Tract 46,  
 T.38 N., R.19 W.  
Symbols Legend:

- ⊗ standard GLO brass cap
- set #4 rebar/plastic cap



#### Legal descriptions:

Easements located in that portion of Tract 46 that is situated in the SE 1/4 of Section 10, T.38 N., R.19 W., NMPM, Montezuma County, CO being more particularly described as follows:

#### Easement 1 - 5.00 acre cluster site

Beginning at a point from which AP 7 of said Tract 46 bears N 89°46' 59" E a distance of 200.00 feet;  
 thence, S 89°46' 59" E a distance of 466.69 feet, along the North line of said tract 46;  
 thence, South a distance of 465.84 feet;  
 thence, East a distance of 466.69 feet;  
 thence, North a distance of 467.61 feet back to the point of beginning.

#### Easement 2 - 0.46 acres

Beginning at AP 7 of said Tract 46;  
 thence, S 89°46' 59" W a distance of 200.00 feet, to the NE corner of said Easement 1;  
 thence, South a distance of 100.00 of feet;  
 thence, N 89°46' 59" E a distance of 201.97 feet;  
 thence, N 01°07' 46" W a distance of 100.01 feet, back to the point of beginning.