

WELL LOCATION FOR AUGUSTUS ENERGY RESOURCES LLC

FRANSON 23-33 4N47W
R 47 W

NOTES

FOUND NO. 6 REBAR
WITH 3-1/4" METAL
CAP BY LS 26602
0.5'± BELOW
ROAD SURFACE

BEARINGS SHOWN HEREON ARE
BASED UPON RTK GPS
OBSERVATIONS

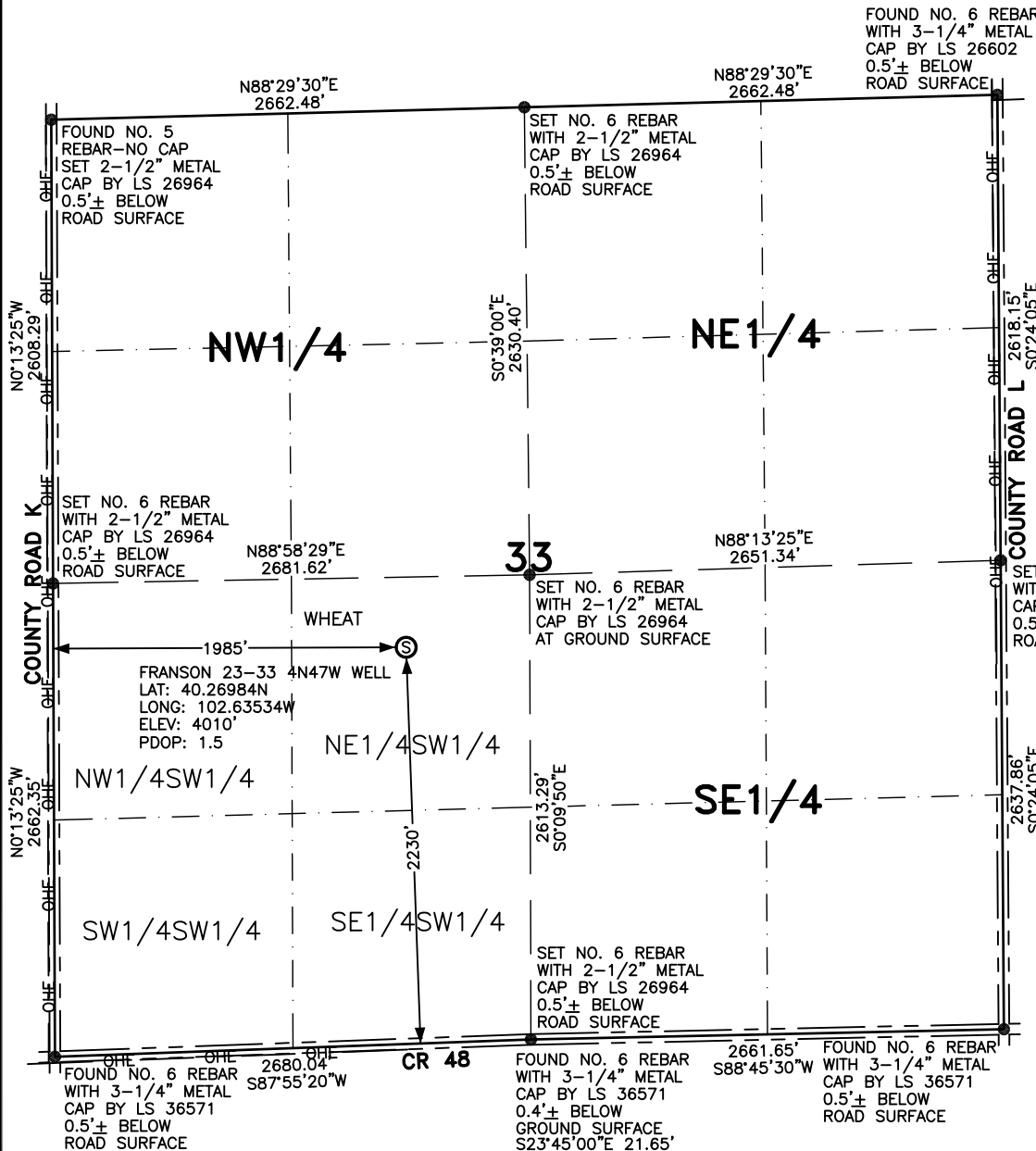
SEE LOCATION DRAWING FOR
IMPROVEMENTS WITHIN 700' OF
LOCATION.

USGS QUAD MAP:
CLARKVILLE SW, COLO.

LAT/LONG VALUES ARE NAD83

ELEVATIONS BASED UPON NGS
OPUS SOLUTION NAVD 88 DATUM

ALL DISTANCES TO SECTION LINES
ARE MEASURED PERPENDICULAR
TO AND ARE AT RIGHT ANGLES
TO SAID SECTION LINES.



T
4
N

LEGEND

- ⊙ FIELD SURVEYED WELL LOCATION
- == ROAD
- x-x- FENCE



SCALE: 1" = 1000'



SCALE IN FEET

THIS WELL LOCATION PLAT HAS BEEN PREPARED FOR AUGUSTUS ENERGY RESOURCES LLC TO LOCATE THE FRANSON 23-33 4N47W WELL BEING 1985 FEET FROM THE WEST LINE AND 2230 FEET FROM THE SOUTH LINE IN THE NE1/4SW1/4 OF SECTION 33, TOWNSHIP 4 NORTH, RANGE 47 WEST OF THE 6TH P.M., YUMA COUNTY, COLORADO. THE SURFACE ELEVATION AT THIS POINT IS 4010 FEET. THIS IS NOT A LAND SURVEY PLAT.



LEIBERT-McATEE & ASSOCIATES, INC.

P.O. BOX 442 615 SOUTH TENTH AVENUE
STERLING, CO 80751 970-522-1960

FIELD DATE: 6-13-14	DWG DATE: 6-25-14	GPS OPERATOR: DARREN VEAL
FRANSON 23-33 4N47W	DWG NO. 842-14	SHEET 1 OF 1