



Company: Extraction Oil & Gas
Field: Weld Co., Co
Location: Sec.28-T07N-R67W
Well: Nelson Farm #4
Borehole: Original Hole
Rig: Xtreme 7
Plan: Rev 2

PATHFINDER
A Schlumberger Company

SECTION DETAILS

Sec	MD	Inc	Azi	TVD	+N/-S	+E/-W	Dleg	TFace	Vsect
1	0.00	0.00	0.00	0.00	0.00	0.00	0.00	0.00	0.00
2	900.00	0.00	0.00	900.00	0.00	0.00	0.00	0.00	0.00
3	1239.63	6.79	292.08	1238.83	7.56	-18.63	2.00	292.08	-18.38
4	6237.42	6.79	292.08	6201.55	229.78	-566.39	0.00	0.00	-558.75
5	6577.05	0.00	0.00	6540.38	237.34	-585.02	2.00	180.00	-577.14
6	6677.05	0.00	0.00	6640.38	237.34	-585.02	0.00	0.00	-577.14
7	7677.05	90.00	90.00	7277.00	237.34	51.60	9.00	90.00	59.16
8	15048.84	90.00	90.00	7277.00	237.34	7423.39	0.00	0.00	7427.19

WELL DETAILS: Nelson Farm #4

+N/-S	+E/-W	GL 4972.00	KB @ 4988.00usft (Xtreme 7 - 16')	Longitude
0.00	0.00	1443895.72	3164958.01	104° 54' 23.011 W

WELLBORE TARGET DETAILS

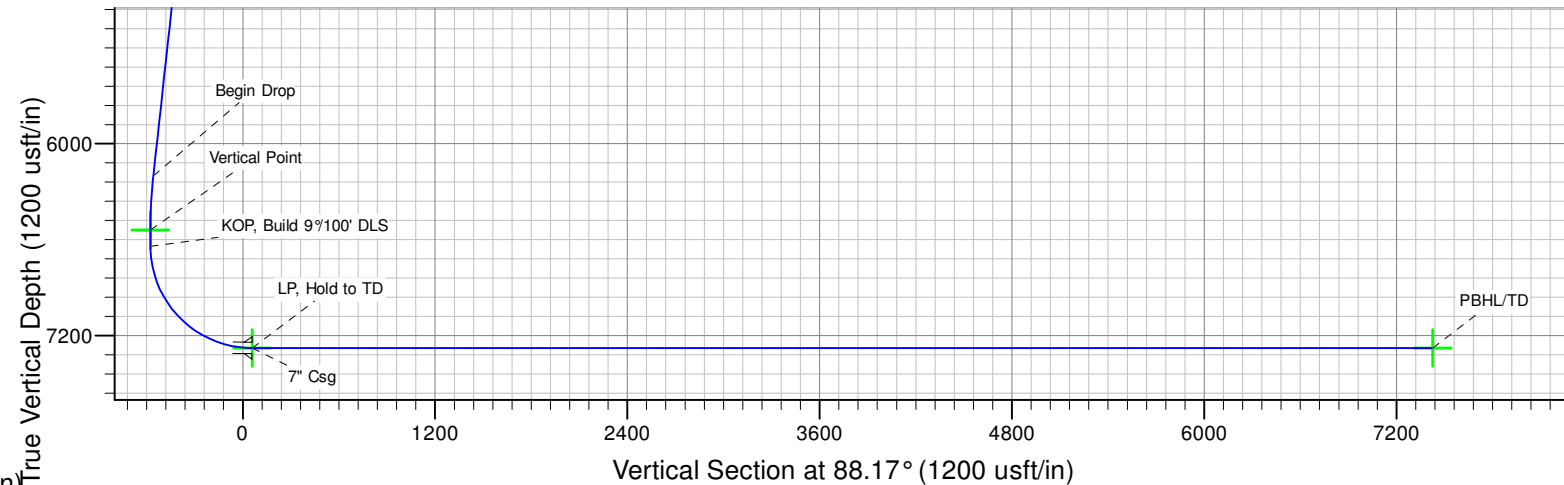
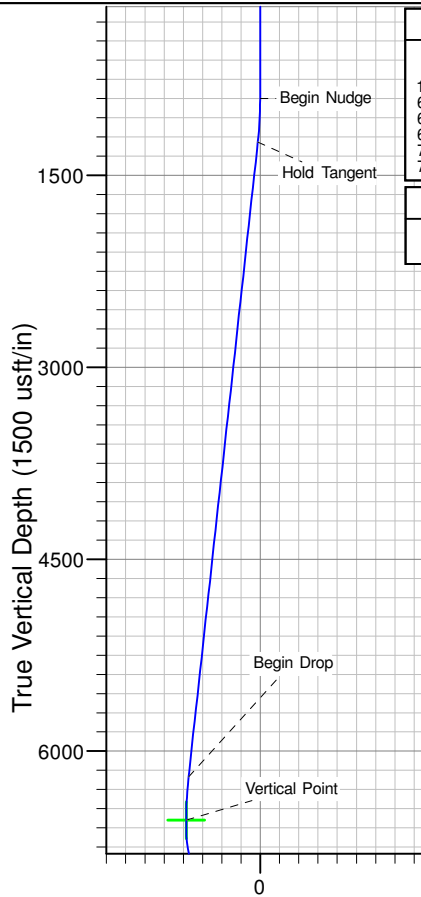
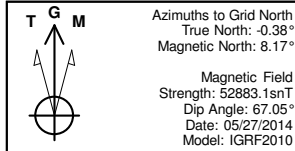
Name	TVD	+N/-S	+E/-W	Shape
KOP #4	6540.38	237.34	-585.02	Point
LP #4	7277.00	237.34	51.60	Point
PBHL Nelson Farm #4	7277.00	237.34	7423.39	Point

ANNOTATIONS

TVD	MD	Annotation
900.00	900.00	Begin Nudge
1238.83	1239.63	Hold Tangent
6201.54	6237.42	Begin Drop
6540.38	6577.05	Vertical Point
6640.38	6677.05	KOP, Build 9°/100' DLS
7277.00	7677.05	LP, Hold to TD
7277.00	15048.84	PBHL/TD

CASING DETAILS

TVD	MD	Name	Size
7277.00	7677.05	7" Csg	7

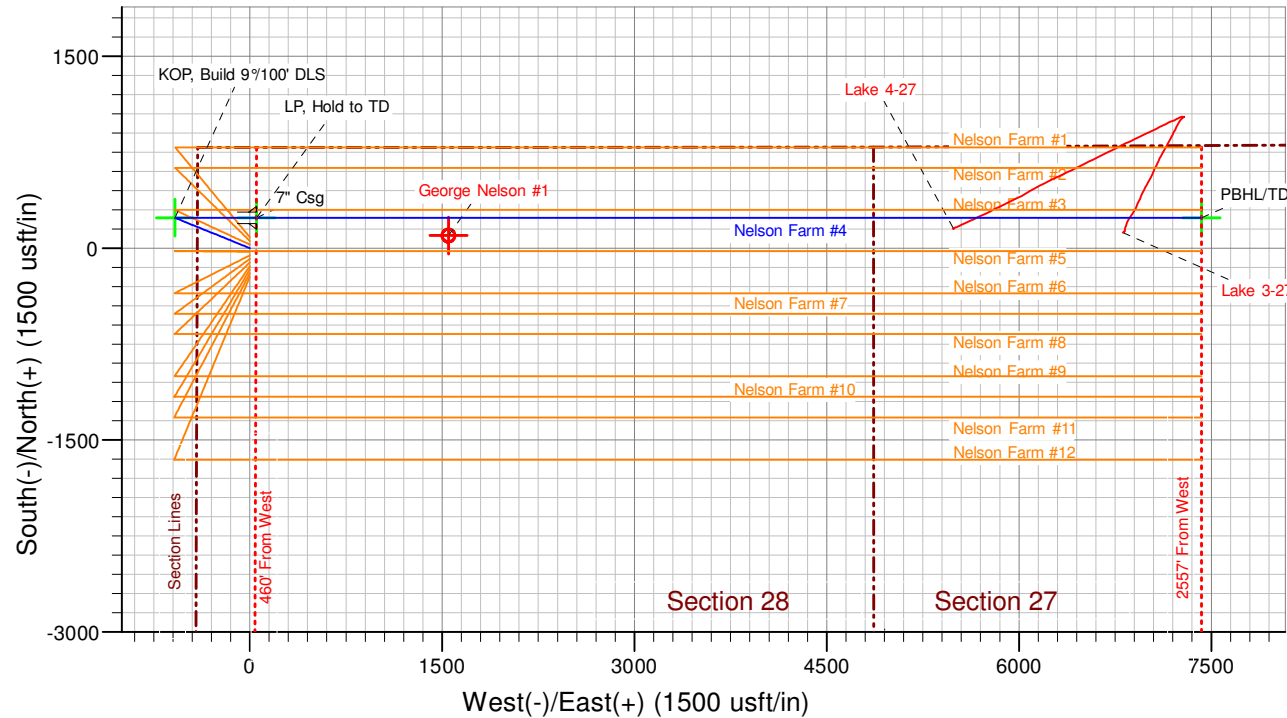


SHL: 788' FNL & 409' FWL
(Sec.28-T07N-R67W)
PBHL: 564' FNL & 2555' FWL
(Sec.27-T07N-R67W)

Notice:
Section Lines and Hardlines
are estimates only and are
subject to customer approval

Nelson Farm #4 Rev 2

Created By: J Rieke Date: 9:26, June 26 2014





Extraction Oil & Gas

**Weld Co., Co
Sec.28-T07N-R67W
Nelson Farm #4**

Original Hole

Plan: Rev 2

Standard Planning Report

26 June, 2014



Database:	EDM 5000.1 Single User Db	Local Co-ordinate Reference:	Well Nelson Farm #4
Company:	Extraction Oil & Gas	TVD Reference:	KB @ 4988.00usft (Xtreme 7 - 16')
Project:	Weld Co., Co	MD Reference:	KB @ 4988.00usft (Xtreme 7 - 16')
Site:	Sec.28-T07N-R67W	North Reference:	Grid
Well:	Nelson Farm #4	Survey Calculation Method:	Minimum Curvature
Wellbore:	Original Hole		
Design:	Rev 2		

Project	Weld Co., Co		
Map System:	US State Plane 1983	System Datum:	Mean Sea Level
Geo Datum:	North American Datum 1983		
Map Zone:	Colorado Northern Zone		

Site	Sec.28-T07N-R67W			
Site Position:		Northing:	1,443,979.89 usft	Latitude: 40° 33' 2.192 N
From:	Lat/Long	Easting:	3,164,958.28 usft	Longitude: 104° 54' 23.000 W
Position Uncertainty:	0.00 usft	Slot Radius:	13-3/16 "	Grid Convergence: 0.38 °

Well	Nelson Farm #4			
Well Position	+N/-S	-84.17 usft	Northing:	1,443,895.72 usft
	+E/-W	-0.27 usft	Easting:	3,164,958.01 usft
Position Uncertainty	0.00 usft		Wellhead Elevation:	4,988.00 usft
			Ground Level:	4,972.00 usft

Wellbore	Original Hole				
Magnetics	Model Name	Sample Date	Declination (°)	Dip Angle (°)	Field Strength (nT)
	IGRF2010	05/27/14	8.56	67.05	52,883

Design	Rev 2			
Audit Notes:				
Version:	Phase:	PROTOTYPE	Tie On Depth:	0.00
Vertical Section:	Depth From (TVD) (usft)	+N/-S (usft)	+E/-W (usft)	Direction (°)
	0.00	0.00	0.00	88.17

Plan Sections										
Measured Depth (usft)	Inclination (°)	Azimuth (°)	Vertical Depth (usft)	+N/-S (usft)	+E/-W (usft)	Dogleg Rate (°/100usft)	Build Rate (°/100usft)	Turn Rate (°/100usft)	TFO (°)	Target
0.00	0.00	0.00	0.00	0.00	0.00	0.00	0.00	0.00	0.00	
900.00	0.00	0.00	900.00	0.00	0.00	0.00	0.00	0.00	0.00	
1,239.63	6.79	292.08	1,238.83	7.56	-18.63	2.00	2.00	0.00	292.08	
6,237.42	6.79	292.08	6,201.55	229.78	-566.39	0.00	0.00	0.00	0.00	
6,577.05	0.00	0.00	6,540.38	237.34	-585.02	2.00	-2.00	0.00	180.00	KOP #4
6,677.05	0.00	0.00	6,640.38	237.34	-585.02	0.00	0.00	0.00	0.00	
7,677.05	90.00	90.00	7,277.00	237.34	51.60	9.00	9.00	0.00	90.00	LP #4
15,048.84	90.00	90.00	7,277.00	237.34	7,423.39	0.00	0.00	0.00	0.00	PBHL Nelson Farm #4



Database:	EDM 5000.1 Single User Db	Local Co-ordinate Reference:	Well Nelson Farm #4
Company:	Extraction Oil & Gas	TVD Reference:	KB @ 4988.00usft (Xtreme 7 - 16')
Project:	Weld Co., Co	MD Reference:	KB @ 4988.00usft (Xtreme 7 - 16')
Site:	Sec.28-T07N-R67W	North Reference:	Grid
Well:	Nelson Farm #4	Survey Calculation Method:	Minimum Curvature
Wellbore:	Original Hole		
Design:	Rev 2		

Planned Survey									
Measured Depth (usft)	Inclination (°)	Azimuth (°)	Vertical Depth (usft)	+N/-S (usft)	+E/-W (usft)	Vertical Section (usft)	Dogleg Rate (°/100usft)	Build Rate (°/100usft)	Turn Rate (°/100usft)
0.00	0.00	0.00	0.00	0.00	0.00	0.00	0.00	0.00	0.00
100.00	0.00	0.00	100.00	0.00	0.00	0.00	0.00	0.00	0.00
200.00	0.00	0.00	200.00	0.00	0.00	0.00	0.00	0.00	0.00
300.00	0.00	0.00	300.00	0.00	0.00	0.00	0.00	0.00	0.00
400.00	0.00	0.00	400.00	0.00	0.00	0.00	0.00	0.00	0.00
500.00	0.00	0.00	500.00	0.00	0.00	0.00	0.00	0.00	0.00
600.00	0.00	0.00	600.00	0.00	0.00	0.00	0.00	0.00	0.00
700.00	0.00	0.00	700.00	0.00	0.00	0.00	0.00	0.00	0.00
800.00	0.00	0.00	800.00	0.00	0.00	0.00	0.00	0.00	0.00
900.00	0.00	0.00	900.00	0.00	0.00	0.00	0.00	0.00	0.00
Begin Nudge									
1,000.00	2.00	292.08	999.98	0.66	-1.62	-1.60	2.00	2.00	0.00
1,100.00	4.00	292.08	1,099.84	2.62	-6.47	-6.38	2.00	2.00	0.00
1,200.00	6.00	292.08	1,199.45	5.90	-14.54	-14.35	2.00	2.00	0.00
1,239.63	6.79	292.08	1,238.84	7.56	-18.63	-18.38	2.00	2.00	0.00
Hold Tangent									
1,300.00	6.79	292.08	1,298.78	10.24	-25.25	-24.91	0.00	0.00	0.00
1,400.00	6.79	292.08	1,398.08	14.69	-36.21	-35.72	0.00	0.00	0.00
1,500.00	6.79	292.08	1,497.38	19.14	-47.17	-46.53	0.00	0.00	0.00
1,600.00	6.79	292.08	1,596.68	23.58	-58.13	-57.35	0.00	0.00	0.00
1,700.00	6.79	292.08	1,695.97	28.03	-69.09	-68.16	0.00	0.00	0.00
1,800.00	6.79	292.08	1,795.27	32.48	-80.05	-78.97	0.00	0.00	0.00
1,900.00	6.79	292.08	1,894.57	36.92	-91.01	-89.78	0.00	0.00	0.00
2,000.00	6.79	292.08	1,993.87	41.37	-101.97	-100.60	0.00	0.00	0.00
2,100.00	6.79	292.08	2,093.17	45.81	-112.93	-111.41	0.00	0.00	0.00
2,200.00	6.79	292.08	2,192.46	50.26	-123.89	-122.22	0.00	0.00	0.00
2,300.00	6.79	292.08	2,291.76	54.71	-134.85	-133.03	0.00	0.00	0.00
2,400.00	6.79	292.08	2,391.06	59.15	-145.81	-143.84	0.00	0.00	0.00
2,500.00	6.79	292.08	2,490.36	63.60	-156.77	-154.66	0.00	0.00	0.00
2,600.00	6.79	292.08	2,589.66	68.05	-167.73	-165.47	0.00	0.00	0.00
2,700.00	6.79	292.08	2,688.95	72.49	-178.69	-176.28	0.00	0.00	0.00
2,800.00	6.79	292.08	2,788.25	76.94	-189.65	-187.09	0.00	0.00	0.00
2,900.00	6.79	292.08	2,887.55	81.39	-200.61	-197.91	0.00	0.00	0.00
3,000.00	6.79	292.08	2,986.85	85.83	-211.57	-208.72	0.00	0.00	0.00
3,100.00	6.79	292.08	3,086.15	90.28	-222.53	-219.53	0.00	0.00	0.00
3,200.00	6.79	292.08	3,185.44	94.73	-233.49	-230.34	0.00	0.00	0.00
3,300.00	6.79	292.08	3,284.74	99.17	-244.45	-241.15	0.00	0.00	0.00
3,400.00	6.79	292.08	3,384.04	103.62	-255.41	-251.97	0.00	0.00	0.00
3,500.00	6.79	292.08	3,483.34	108.06	-266.37	-262.78	0.00	0.00	0.00
3,600.00	6.79	292.08	3,582.64	112.51	-277.33	-273.59	0.00	0.00	0.00
3,700.00	6.79	292.08	3,681.94	116.96	-288.29	-284.40	0.00	0.00	0.00
3,800.00	6.79	292.08	3,781.23	121.40	-299.25	-295.22	0.00	0.00	0.00
3,900.00	6.79	292.08	3,880.53	125.85	-310.21	-306.03	0.00	0.00	0.00
4,000.00	6.79	292.08	3,979.83	130.30	-321.17	-316.84	0.00	0.00	0.00
4,100.00	6.79	292.08	4,079.13	134.74	-332.13	-327.65	0.00	0.00	0.00
4,200.00	6.79	292.08	4,178.43	139.19	-343.09	-338.46	0.00	0.00	0.00
4,300.00	6.79	292.08	4,277.72	143.64	-354.05	-349.28	0.00	0.00	0.00
4,400.00	6.79	292.08	4,377.02	148.08	-365.01	-360.09	0.00	0.00	0.00
4,500.00	6.79	292.08	4,476.32	152.53	-375.97	-370.90	0.00	0.00	0.00
4,600.00	6.79	292.08	4,575.62	156.97	-386.93	-381.71	0.00	0.00	0.00
4,700.00	6.79	292.08	4,674.92	161.42	-397.89	-392.53	0.00	0.00	0.00
4,800.00	6.79	292.08	4,774.21	165.87	-408.85	-403.34	0.00	0.00	0.00
4,900.00	6.79	292.08	4,873.51	170.31	-419.81	-414.15	0.00	0.00	0.00
5,000.00	6.79	292.08	4,972.81	174.76	-430.77	-424.96	0.00	0.00	0.00



Database:	EDM 5000.1 Single User Db	Local Co-ordinate Reference:	Well Nelson Farm #4
Company:	Extraction Oil & Gas	TVD Reference:	KB @ 4988.00usft (Xtreme 7 - 16')
Project:	Weld Co., Co	MD Reference:	KB @ 4988.00usft (Xtreme 7 - 16')
Site:	Sec.28-T07N-R67W	North Reference:	Grid
Well:	Nelson Farm #4	Survey Calculation Method:	Minimum Curvature
Wellbore:	Original Hole		
Design:	Rev 2		

Planned Survey									
Measured Depth (usft)	Inclination (°)	Azimuth (°)	Vertical Depth (usft)	+N/-S (usft)	+E/-W (usft)	Vertical Section (usft)	Dogleg Rate (°/100usft)	Build Rate (°/100usft)	Turn Rate (°/100usft)
5,100.00	6.79	292.08	5,072.11	179.21	-441.73	-435.77	0.00	0.00	0.00
5,200.00	6.79	292.08	5,171.41	183.65	-452.69	-446.59	0.00	0.00	0.00
5,300.00	6.79	292.08	5,270.70	188.10	-463.65	-457.40	0.00	0.00	0.00
5,400.00	6.79	292.08	5,370.00	192.55	-474.61	-468.21	0.00	0.00	0.00
5,500.00	6.79	292.08	5,469.30	196.99	-485.57	-479.02	0.00	0.00	0.00
5,600.00	6.79	292.08	5,568.60	201.44	-496.53	-489.84	0.00	0.00	0.00
5,700.00	6.79	292.08	5,667.90	205.88	-507.49	-500.65	0.00	0.00	0.00
5,800.00	6.79	292.08	5,767.20	210.33	-518.45	-511.46	0.00	0.00	0.00
5,900.00	6.79	292.08	5,866.49	214.78	-529.41	-522.27	0.00	0.00	0.00
6,000.00	6.79	292.08	5,965.79	219.22	-540.37	-533.08	0.00	0.00	0.00
6,100.00	6.79	292.08	6,065.09	223.67	-551.33	-543.90	0.00	0.00	0.00
6,200.00	6.79	292.08	6,164.39	228.12	-562.29	-554.71	0.00	0.00	0.00
6,237.42	6.79	292.08	6,201.55	229.78	-566.39	-558.75	0.00	0.00	0.00
Begin Drop									
6,300.00	5.54	292.08	6,263.76	232.31	-572.62	-564.90	2.00	-2.00	0.00
6,400.00	3.54	292.08	6,363.44	235.28	-579.95	-572.14	2.00	-2.00	0.00
6,500.00	1.54	292.08	6,463.34	236.95	-584.06	-576.19	2.00	-2.00	0.00
6,577.05	0.00	0.00	6,540.38	237.34	-585.02	-577.14	2.00	-2.00	88.15
Vertical Point									
6,600.00	0.00	0.00	6,563.33	237.34	-585.02	-577.14	0.00	0.00	0.00
6,677.05	0.00	0.00	6,640.38	237.34	-585.02	-577.14	0.00	0.00	0.00
KOP, Build 9°/100' DLS									
6,700.00	2.07	90.00	6,663.33	237.34	-584.61	-576.72	9.00	9.00	0.00
6,800.00	11.07	90.00	6,762.57	237.34	-573.18	-565.31	9.00	9.00	0.00
6,900.00	20.07	90.00	6,858.80	237.34	-546.38	-538.51	9.00	9.00	0.00
7,000.00	29.07	90.00	6,949.66	237.34	-504.85	-497.01	9.00	9.00	0.00
7,100.00	38.07	90.00	7,032.90	237.34	-449.62	-441.80	9.00	9.00	0.00
7,200.00	47.07	90.00	7,106.47	237.34	-382.04	-374.26	9.00	9.00	0.00
7,300.00	56.07	90.00	7,168.57	237.34	-303.79	-296.05	9.00	9.00	0.00
7,400.00	65.07	90.00	7,217.66	237.34	-216.79	-209.09	9.00	9.00	0.00
7,500.00	74.07	90.00	7,252.54	237.34	-123.18	-115.53	9.00	9.00	0.00
7,600.00	83.07	90.00	7,272.34	237.34	-25.26	-17.67	9.00	9.00	0.00
7,677.05	90.00	90.00	7,277.00	237.34	51.60	59.16	9.00	9.00	0.00
LP, Hold to TD - 7" Csg									
7,700.00	90.00	90.00	7,277.00	237.34	74.55	82.10	0.00	0.00	0.00
7,800.00	90.00	90.00	7,277.00	237.34	174.55	182.04	0.00	0.00	0.00
7,900.00	90.00	90.00	7,277.00	237.34	274.55	281.99	0.00	0.00	0.00
8,000.00	90.00	90.00	7,277.00	237.34	374.55	381.94	0.00	0.00	0.00
8,100.00	90.00	90.00	7,277.00	237.34	474.55	481.89	0.00	0.00	0.00
8,200.00	90.00	90.00	7,277.00	237.34	574.55	581.84	0.00	0.00	0.00
8,300.00	90.00	90.00	7,277.00	237.34	674.55	681.79	0.00	0.00	0.00
8,400.00	90.00	90.00	7,277.00	237.34	774.55	781.74	0.00	0.00	0.00
8,500.00	90.00	90.00	7,277.00	237.34	874.55	881.69	0.00	0.00	0.00
8,600.00	90.00	90.00	7,277.00	237.34	974.55	981.64	0.00	0.00	0.00
8,700.00	90.00	90.00	7,277.00	237.34	1,074.55	1,081.59	0.00	0.00	0.00
8,800.00	90.00	90.00	7,277.00	237.34	1,174.55	1,181.53	0.00	0.00	0.00
8,900.00	90.00	90.00	7,277.00	237.34	1,274.55	1,281.48	0.00	0.00	0.00
9,000.00	90.00	90.00	7,277.00	237.34	1,374.55	1,381.43	0.00	0.00	0.00
9,100.00	90.00	90.00	7,277.00	237.34	1,474.55	1,481.38	0.00	0.00	0.00
9,200.00	90.00	90.00	7,277.00	237.34	1,574.55	1,581.33	0.00	0.00	0.00
9,300.00	90.00	90.00	7,277.00	237.34	1,674.55	1,681.28	0.00	0.00	0.00
9,400.00	90.00	90.00	7,277.00	237.34	1,774.55	1,781.23	0.00	0.00	0.00
9,500.00	90.00	90.00	7,277.00	237.34	1,874.55	1,881.18	0.00	0.00	0.00



Database:	EDM 5000.1 Single User Db	Local Co-ordinate Reference:	Well Nelson Farm #4
Company:	Extraction Oil & Gas	TVD Reference:	KB @ 4988.00usft (Xtreme 7 - 16')
Project:	Weld Co., Co	MD Reference:	KB @ 4988.00usft (Xtreme 7 - 16')
Site:	Sec.28-T07N-R67W	North Reference:	Grid
Well:	Nelson Farm #4	Survey Calculation Method:	Minimum Curvature
Wellbore:	Original Hole		
Design:	Rev 2		

Planned Survey										
Measured Depth (usft)	Inclination (°)	Azimuth (°)	Vertical Depth (usft)	+N/-S (usft)	+E/-W (usft)	Vertical Section (usft)	Dogleg Rate (°/100usft)	Build Rate (°/100usft)	Turn Rate (°/100usft)	
9,600.00	90.00	90.00	7,277.00	237.34	1,974.55	1,981.13	0.00	0.00	0.00	
9,700.00	90.00	90.00	7,277.00	237.34	2,074.55	2,081.07	0.00	0.00	0.00	
9,800.00	90.00	90.00	7,277.00	237.34	2,174.55	2,181.02	0.00	0.00	0.00	
9,900.00	90.00	90.00	7,277.00	237.34	2,274.55	2,280.97	0.00	0.00	0.00	
10,000.00	90.00	90.00	7,277.00	237.34	2,374.55	2,380.92	0.00	0.00	0.00	
10,100.00	90.00	90.00	7,277.00	237.34	2,474.55	2,480.87	0.00	0.00	0.00	
10,200.00	90.00	90.00	7,277.00	237.34	2,574.55	2,580.82	0.00	0.00	0.00	
10,300.00	90.00	90.00	7,277.00	237.34	2,674.55	2,680.77	0.00	0.00	0.00	
10,400.00	90.00	90.00	7,277.00	237.34	2,774.55	2,780.72	0.00	0.00	0.00	
10,500.00	90.00	90.00	7,277.00	237.34	2,874.55	2,880.67	0.00	0.00	0.00	
10,600.00	90.00	90.00	7,277.00	237.34	2,974.55	2,980.61	0.00	0.00	0.00	
10,700.00	90.00	90.00	7,277.00	237.34	3,074.55	3,080.56	0.00	0.00	0.00	
10,800.00	90.00	90.00	7,277.00	237.34	3,174.55	3,180.51	0.00	0.00	0.00	
10,900.00	90.00	90.00	7,277.00	237.34	3,274.55	3,280.46	0.00	0.00	0.00	
11,000.00	90.00	90.00	7,277.00	237.34	3,374.55	3,380.41	0.00	0.00	0.00	
11,100.00	90.00	90.00	7,277.00	237.34	3,474.55	3,480.36	0.00	0.00	0.00	
11,200.00	90.00	90.00	7,277.00	237.34	3,574.55	3,580.31	0.00	0.00	0.00	
11,300.00	90.00	90.00	7,277.00	237.34	3,674.55	3,680.26	0.00	0.00	0.00	
11,400.00	90.00	90.00	7,277.00	237.34	3,774.55	3,780.21	0.00	0.00	0.00	
11,500.00	90.00	90.00	7,277.00	237.34	3,874.55	3,880.16	0.00	0.00	0.00	
11,600.00	90.00	90.00	7,277.00	237.34	3,974.55	3,980.10	0.00	0.00	0.00	
11,700.00	90.00	90.00	7,277.00	237.34	4,074.55	4,080.05	0.00	0.00	0.00	
11,800.00	90.00	90.00	7,277.00	237.34	4,174.55	4,180.00	0.00	0.00	0.00	
11,900.00	90.00	90.00	7,277.00	237.34	4,274.55	4,279.95	0.00	0.00	0.00	
12,000.00	90.00	90.00	7,277.00	237.34	4,374.55	4,379.90	0.00	0.00	0.00	
12,100.00	90.00	90.00	7,277.00	237.34	4,474.55	4,479.85	0.00	0.00	0.00	
12,200.00	90.00	90.00	7,277.00	237.34	4,574.55	4,579.80	0.00	0.00	0.00	
12,300.00	90.00	90.00	7,277.00	237.34	4,674.55	4,679.75	0.00	0.00	0.00	
12,400.00	90.00	90.00	7,277.00	237.34	4,774.55	4,779.70	0.00	0.00	0.00	
12,500.00	90.00	90.00	7,277.00	237.34	4,874.55	4,879.64	0.00	0.00	0.00	
12,600.00	90.00	90.00	7,277.00	237.34	4,974.55	4,979.59	0.00	0.00	0.00	
12,700.00	90.00	90.00	7,277.00	237.34	5,074.55	5,079.54	0.00	0.00	0.00	
12,800.00	90.00	90.00	7,277.00	237.34	5,174.55	5,179.49	0.00	0.00	0.00	
12,900.00	90.00	90.00	7,277.00	237.34	5,274.55	5,279.44	0.00	0.00	0.00	
13,000.00	90.00	90.00	7,277.00	237.34	5,374.55	5,379.39	0.00	0.00	0.00	
13,100.00	90.00	90.00	7,277.00	237.34	5,474.55	5,479.34	0.00	0.00	0.00	
13,200.00	90.00	90.00	7,277.00	237.34	5,574.55	5,579.29	0.00	0.00	0.00	
13,300.00	90.00	90.00	7,277.00	237.34	5,674.55	5,679.24	0.00	0.00	0.00	
13,400.00	90.00	90.00	7,277.00	237.34	5,774.55	5,779.18	0.00	0.00	0.00	
13,500.00	90.00	90.00	7,277.00	237.34	5,874.55	5,879.13	0.00	0.00	0.00	
13,600.00	90.00	90.00	7,277.00	237.34	5,974.55	5,979.08	0.00	0.00	0.00	
13,700.00	90.00	90.00	7,277.00	237.34	6,074.55	6,079.03	0.00	0.00	0.00	
13,800.00	90.00	90.00	7,277.00	237.34	6,174.55	6,178.98	0.00	0.00	0.00	
13,900.00	90.00	90.00	7,277.00	237.34	6,274.55	6,278.93	0.00	0.00	0.00	
14,000.00	90.00	90.00	7,277.00	237.34	6,374.55	6,378.88	0.00	0.00	0.00	
14,100.00	90.00	90.00	7,277.00	237.34	6,474.55	6,478.83	0.00	0.00	0.00	
14,200.00	90.00	90.00	7,277.00	237.34	6,574.55	6,578.78	0.00	0.00	0.00	
14,300.00	90.00	90.00	7,277.00	237.34	6,674.55	6,678.73	0.00	0.00	0.00	
14,400.00	90.00	90.00	7,277.00	237.34	6,774.55	6,778.67	0.00	0.00	0.00	
14,500.00	90.00	90.00	7,277.00	237.34	6,874.55	6,878.62	0.00	0.00	0.00	
14,600.00	90.00	90.00	7,277.00	237.34	6,974.55	6,978.57	0.00	0.00	0.00	
14,700.00	90.00	90.00	7,277.00	237.34	7,074.55	7,078.52	0.00	0.00	0.00	
14,800.00	90.00	90.00	7,277.00	237.34	7,174.55	7,178.47	0.00	0.00	0.00	
14,900.00	90.00	90.00	7,277.00	237.34	7,274.55	7,278.42	0.00	0.00	0.00	



Database:	EDM 5000.1 Single User Db	Local Co-ordinate Reference:	Well Nelson Farm #4
Company:	Extraction Oil & Gas	TVD Reference:	KB @ 4988.00usft (Xtreme 7 - 16')
Project:	Weld Co., Co	MD Reference:	KB @ 4988.00usft (Xtreme 7 - 16')
Site:	Sec.28-T07N-R67W	North Reference:	Grid
Well:	Nelson Farm #4	Survey Calculation Method:	Minimum Curvature
Wellbore:	Original Hole		
Design:	Rev 2		

Planned Survey										
Measured Depth (usft)	Inclination (°)	Azimuth (°)	Vertical Depth (usft)	+N/-S (usft)	+E/-W (usft)	Vertical Section (usft)	Dogleg Rate (°/100usft)	Build Rate (°/100usft)	Turn Rate (°/100usft)	
15,000.00	90.00	90.00	7,277.00	237.34	7,374.55	7,378.37	0.00	0.00	0.00	
15,048.84	90.00	90.00	7,277.00	237.34	7,423.39	7,427.19	0.00	0.00	0.00	
PBHL/TD										

Design Targets										
Target Name	Dip Angle (°)	Dip Dir. (°)	TVD (usft)	+N/-S (usft)	+E/-W (usft)	Northing (usft)	Easting (usft)	Latitude	Longitude	
- hit/miss target										
- Shape										
George Nelson	0.00	0.01	4,335.00	99.32	1,548.62	1,443,995.04	3,166,506.63	40° 33' 2.239 N	104° 54' 2.941 W	
- plan misses target center by 1897.83usft at 4146.37usft MD (4125.18 TVD, 136.80 N, -337.21 E)										
- Circle (radius 50.00)										
KOP #4	0.00	0.00	6,540.38	237.34	-585.02	1,444,133.06	3,164,372.99	40° 33' 3.745 N	104° 54' 30.569 W	
- plan hits target center										
- Point										
LP #4	0.00	0.00	7,277.00	237.34	51.60	1,444,133.06	3,165,009.61	40° 33' 3.703 N	104° 54' 22.322 W	
- plan hits target center										
- Point										
PBHL Nelson Farm #4	0.00	0.00	7,277.00	237.34	7,423.39	1,444,133.06	3,172,381.41	40° 33' 3.204 N	104° 52' 46.825 W	
- plan hits target center										
- Point										

Casing Points					
Measured Depth (usft)	Vertical Depth (usft)	Name	Casing Diameter (")	Hole Diameter (")	
7,677.05	7,277.00	7" Csg	7	7-1/2	

Plan Annotations					
Measured Depth (usft)	Vertical Depth (usft)	Local Coordinates			
		+N/-S (usft)	+E/-W (usft)	Comment	
900.00	900.00	0.00	0.00	Begin Nudge	
1,239.63	1,238.84	7.56	-18.63	Hold Tangent	
6,237.42	6,201.55	229.78	-566.39	Begin Drop	
6,577.05	6,540.38	237.34	-585.02	Vertical Point	
6,677.05	6,640.38	237.34	-585.02	KOP, Build 9°/100' DLS	
7,677.05	7,277.00	237.34	51.60	LP, Hold to TD	
15,048.84	7,277.00	237.34	7,423.39	PBHL/TD	