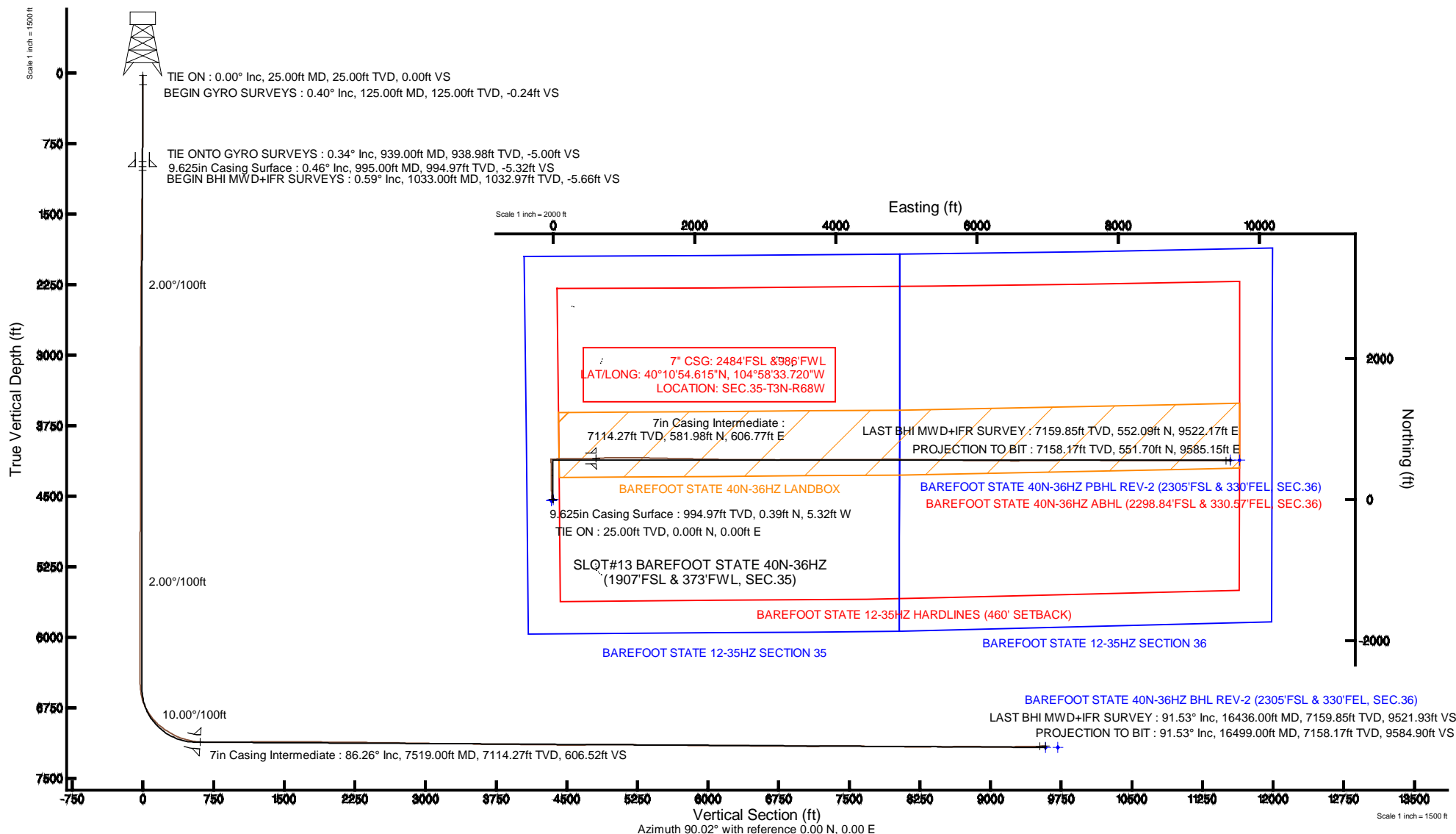


KERR-MCGEE OIL & GAS ONSHORE LP

Location: COLORADO Slot: SLOT#13 BAREFOOT STATE 40N-36HZ (1907'FSL & 373'FWL, SEC.35)
 Field: WELD COUNTY (KERR MCGEE) Well: BAREFOOT STATE 40N-36HZ
 Facility: SEC.35-T3N-R68W Wellbore: BAREFOOT STATE 40N-36HZ PWB

Plot reference wellpath is BAREFOOT STATE 40N-36HZ (REV-B.0) PWP

True vertical depths are referenced to H&P 307 (25KB) (RKB)	Grid System: NAD83 / Lambert Colorado SP, Northern Zone (501), US feet
Measured depths are referenced to H&P 307 (25KB) (RKB)	North Reference: True north
H&P 307 (25KB) (RKB) to Mean Sea Level: 4886 feet	Scale: True distance
Mean Sea Level to Mud line (At Slot: SLOT#13 BAREFOOT STATE 40N-36HZ (1907'FSL & 373'FWL, SEC.35)): 0 feet	Depths are in feet
Coordinates are in feet referenced to Slot	Created by: robale01 on 12/Jun/2014



REFERENCE WELLPATH IDENTIFICATION			
Operator	KERR-MCGEE OIL & GAS ONSHORE LP	Slot	SLOT#13 BAREFOOT STATE 40N-36HZ (1907'FSL & 373'FWL, SEC.35)
Area	COLORADO	Well	BAREFOOT STATE 40N-36HZ
Field	WELD COUNTY (KERR MCGEE)	Wellbore	BAREFOOT STATE 40N-36HZ AWB
Facility	SEC.35-T3N-R68W		

REPORT SETUP INFORMATION			
Projection System	NAD83 / Lambert Colorado SP, Northern Zone (501), US feet	Software System	WellArchitect® 4.0.0
North Reference	True	User	Robiale01
Scale	0.999958	Report Generated	12/Jun/2014 at 14:12
Convergence at slot	n/a	Database/Source file	WellArchitectDB/_BAREFOOT_STATE_40N-36HZ_AWB.xml

WELLPATH LOCATION						
	Local coordinates		Grid coordinates		Geographic coordinates	
	North[ft]	East[ft]	Easting[US ft]	Northing[US ft]	Latitude	Longitude
Slot Location	-1963.56	-683.20	3145795.55	1308933.19	40°10'48.864"N	104°58'41.538"W
Facility Reference Pt			3146467.10	1310900.67	40°11'08.268"N	104°58'32.736"W
Field Reference Pt			3197771.84	1268891.29	40°04'09.600"N	104°47'36.000"W

WELLPATH DATUM			
Calculation method	Minimum curvature	H&P 307 (25'KB) (RKB) to Facility Vertical Datum	4886.00ft
Horizontal Reference Pt	Slot	H&P 307 (25'KB) (RKB) to Mean Sea Level	4886.00ft
Vertical Reference Pt	H&P 307 (25'KB) (RKB)	H&P 307 (25'KB) (RKB) to Mud Line at Slot (SLOT#13 BAREFOOT STATE 40N-36HZ (1907'FSL & 373'FWL, SEC.35))	4886.00ft
MD Reference Pt	H&P 307 (25'KB) (RKB)	Section Origin	N 0.00, E 0.00 ft
Field Vertical Reference	Mean Sea Level	Section Azimuth	86.71°

REFERENCE WELLPATH IDENTIFICATION

Operator	KERR-MCGEE OIL & GAS ONSHORE LP	Slot	SLOT#13 BAREFOOT STATE 40N-36HZ (1907'FSL & 373'FWL, SEC.35)
Area	COLORADO	Well	BAREFOOT STATE 40N-36HZ
Field	WELD COUNTY (KERR MCGEE)	Wellbore	BAREFOOT STATE 40N-36HZ AWP
Facility	SEC.35-T3N-R68W		

WELLPATH DATA (176 stations) † = interpolated/extrapolated station

MD [ft]	Inclination [°]	Azimuth [°]	TVD [ft]	Vert Sect [ft]	North [ft]	East [ft]	Latitude	Longitude	DLS [°/100ft]	Comments
0.00†	0.000	316.000	0.00	0.00	0.00	0.00	40°10'48.864"N	104°58'41.538"W	0.00	
25.00	0.000	316.000	25.00	0.00	0.00	0.00	40°10'48.864"N	104°58'41.538"W	0.00	TIE ON
125.00	0.400	316.000	125.00	-0.23	0.25	-0.24	40°10'48.866"N	104°58'41.541"W	0.40	BEGIN GYRO SURVEYS
225.00	0.230	296.760	225.00	-0.63	0.59	-0.66	40°10'48.870"N	104°58'41.547"W	0.20	
325.00	0.100	244.330	325.00	-0.88	0.65	-0.92	40°10'48.870"N	104°58'41.550"W	0.19	
425.00	0.300	196.530	425.00	-1.05	0.36	-1.08	40°10'48.868"N	104°58'41.552"W	0.24	
525.00	0.420	234.240	524.99	-1.45	-0.11	-1.45	40°10'48.863"N	104°58'41.557"W	0.26	
625.00	0.530	250.960	624.99	-2.21	-0.47	-2.18	40°10'48.859"N	104°58'41.566"W	0.18	
725.00	0.690	273.560	724.99	-3.25	-0.59	-3.22	40°10'48.858"N	104°58'41.579"W	0.29	
825.00	0.570	293.230	824.98	-4.29	-0.35	-4.28	40°10'48.861"N	104°58'41.593"W	0.25	
925.00	0.400	323.010	924.98	-4.93	0.12	-4.95	40°10'48.865"N	104°58'41.602"W	0.30	
939.00	0.340	319.540	938.98	-4.98	0.19	-5.00	40°10'48.866"N	104°58'41.602"W	0.46	TIE ONTO GYRO SURVEYS
1033.00	0.590	276.410	1032.97	-5.63	0.46	-5.66	40°10'48.869"N	104°58'41.611"W	0.44	BEGIN BHI MWD+IFR SURVEYS
1401.00	0.730	270.700	1400.95	-9.83	0.70	-9.89	40°10'48.871"N	104°58'41.665"W	0.04	
1676.00	0.960	305.660	1675.92	-13.37	2.06	-13.51	40°10'48.884"N	104°58'41.712"W	0.20	
1976.00	1.280	315.180	1975.86	-17.55	5.90	-17.92	40°10'48.922"N	104°58'41.769"W	0.12	
2068.00	2.400	336.670	2067.82	-18.89	8.40	-19.40	40°10'48.947"N	104°58'41.788"W	1.41	
2160.00	4.180	352.600	2159.66	-19.79	13.50	-20.60	40°10'48.997"N	104°58'41.803"W	2.16	
2252.00	5.700	354.280	2251.32	-20.22	21.37	-21.49	40°10'49.075"N	104°58'41.815"W	1.66	
2343.00	7.560	356.200	2341.70	-20.47	31.84	-22.33	40°10'49.179"N	104°58'41.826"W	2.06	
2435.00	9.160	2.220	2432.73	-19.82	45.20	-22.45	40°10'49.311"N	104°58'41.827"W	1.98	
2526.00	10.440	1.680	2522.40	-18.41	60.68	-21.93	40°10'49.464"N	104°58'41.821"W	1.41	
2619.00	9.940	2.480	2613.93	-16.87	77.12	-21.33	40°10'49.626"N	104°58'41.813"W	0.56	
2710.00	10.800	357.700	2703.44	-15.93	93.48	-21.34	40°10'49.788"N	104°58'41.813"W	1.34	
2804.00	10.500	355.550	2795.82	-15.95	110.82	-22.36	40°10'49.959"N	104°58'41.826"W	0.53	
2897.00	9.950	354.440	2887.35	-16.44	127.27	-23.79	40°10'50.122"N	104°58'41.845"W	0.63	
2991.00	10.370	358.890	2979.87	-16.44	143.81	-24.74	40°10'50.285"N	104°58'41.857"W	0.95	
3084.00	9.600	358.720	3071.47	-15.85	159.93	-25.08	40°10'50.444"N	104°58'41.861"W	0.83	
3178.00	10.750	357.750	3163.99	-15.41	176.53	-25.60	40°10'50.608"N	104°58'41.868"W	1.24	
3271.00	9.520	356.570	3255.53	-15.27	192.87	-26.40	40°10'50.770"N	104°58'41.878"W	1.34	
3365.00	9.830	2.140	3348.20	-14.53	208.65	-26.56	40°10'50.926"N	104°58'41.880"W	1.05	
3459.00	11.530	1.970	3440.57	-12.91	226.06	-25.94	40°10'51.098"N	104°58'41.872"W	1.81	
3553.00	10.750	2.060	3532.79	-11.23	244.21	-25.30	40°10'51.277"N	104°58'41.864"W	0.83	
3648.00	9.850	2.000	3626.26	-9.65	261.18	-24.70	40°10'51.445"N	104°58'41.856"W	0.95	
3742.00	9.540	0.290	3718.92	-8.42	277.01	-24.38	40°10'51.601"N	104°58'41.852"W	0.45	
3837.00	9.370	359.790	3812.63	-7.51	292.62	-24.37	40°10'51.756"N	104°58'41.852"W	0.20	
3931.00	9.050	0.720	3905.42	-6.58	307.66	-24.30	40°10'51.904"N	104°58'41.851"W	0.38	
4026.00	9.770	358.150	3999.14	-5.86	323.19	-24.47	40°10'52.058"N	104°58'41.853"W	0.88	
4120.00	9.120	2.330	4091.86	-4.93	338.60	-24.42	40°10'52.210"N	104°58'41.853"W	1.00	
4214.00	10.280	358.370	4184.52	-3.95	354.43	-24.36	40°10'52.366"N	104°58'41.852"W	1.42	
4308.00	10.740	354.570	4276.94	-4.04	371.53	-25.43	40°10'52.536"N	104°58'41.866"W	0.88	
4403.00	10.040	354.480	4370.39	-4.69	388.59	-27.06	40°10'52.704"N	104°58'41.887"W	0.74	
4497.00	9.860	2.200	4462.98	-4.24	404.79	-27.54	40°10'52.864"N	104°58'41.893"W	1.43	
4685.00	9.100	358.370	4648.41	-2.26	435.74	-27.35	40°10'53.170"N	104°58'41.890"W	0.53	
4780.00	10.190	358.840	4742.07	-1.73	451.65	-27.73	40°10'53.327"N	104°58'41.895"W	1.15	

REFERENCE WELLPATH IDENTIFICATION

Operator	KERR-MCGEE OIL & GAS ONSHORE LP	Slot	SLOT#13 BAREFOOT STATE 40N-36HZ (1907'FSL & 373'FWL, SEC.35)
Area	COLORADO	Well	BAREFOOT STATE 40N-36HZ
Field	WELD COUNTY (KERR MCGEE)	Wellbore	BAREFOOT STATE 40N-36HZ AWP
Facility	SEC.35-T3N-R68W		

WELLPATH DATA (176 stations) † = interpolated/extrapolated station

MD [ft]	Inclination [°]	Azimuth [°]	TVD [ft]	Vert Sect [ft]	North [ft]	East [ft]	Latitude	Longitude	DLS [°/100ft]	Comments
4968.00	8.460	354.630	4927.58	-1.61	482.04	-29.36	40°10'53.628"N	104°58'41.916"W	0.99	
5062.00	9.350	359.980	5020.44	-1.43	496.56	-30.01	40°10'53.771"N	104°58'41.925"W	1.29	
5156.00	9.100	359.070	5113.23	-0.68	511.63	-30.13	40°10'53.920"N	104°58'41.926"W	0.31	
5250.00	8.440	358.620	5206.13	-0.15	525.96	-30.42	40°10'54.062"N	104°58'41.930"W	0.71	
5345.00	6.670	1.270	5300.30	0.52	538.45	-30.47	40°10'54.185"N	104°58'41.931"W	1.90	
5439.00	5.130	358.400	5393.80	1.08	548.11	-30.46	40°10'54.280"N	104°58'41.930"W	1.67	
5533.00	2.940	0.580	5487.56	1.37	554.72	-30.56	40°10'54.346"N	104°58'41.932"W	2.34	
5628.00	1.390	335.070	5582.49	1.11	558.20	-31.02	40°10'54.380"N	104°58'41.938"W	1.88	
5722.00	0.490	296.760	5676.48	0.34	559.42	-31.86	40°10'54.392"N	104°58'41.948"W	1.12	
6099.00	0.910	357.240	6053.45	-1.03	563.13	-33.44	40°10'54.429"N	104°58'41.969"W	0.21	
6288.00	1.340	8.770	6242.42	-0.55	566.82	-33.18	40°10'54.465"N	104°58'41.965"W	0.26	
6382.00	0.750	58.470	6336.40	0.22	568.22	-32.48	40°10'54.479"N	104°58'41.957"W	1.09	
6477.00	0.880	23.880	6431.39	1.10	569.22	-31.66	40°10'54.489"N	104°58'41.946"W	0.53	
6571.00	3.710	82.340	6525.32	4.47	570.28	-28.35	40°10'54.500"N	104°58'41.903"W	3.55	
6618.00	7.620	86.470	6572.08	9.10	570.68	-23.73	40°10'54.503"N	104°58'41.844"W	8.36	
6666.00	12.230	86.770	6619.35	17.37	571.16	-15.47	40°10'54.508"N	104°58'41.737"W	9.60	
6713.00	16.460	85.410	6664.87	29.01	571.97	-3.86	40°10'54.516"N	104°58'41.588"W	9.03	
6760.00	21.370	85.240	6709.32	44.24	573.22	11.32	40°10'54.529"N	104°58'41.392"W	10.45	
6807.00	26.490	85.470	6752.27	63.29	574.76	30.31	40°10'54.544"N	104°58'41.147"W	10.90	
6855.00	31.480	86.750	6794.24	86.54	576.31	53.51	40°10'54.559"N	104°58'40.849"W	10.48	
6902.00	35.370	87.800	6833.46	112.42	577.53	79.37	40°10'54.571"N	104°58'40.515"W	8.37	
6949.00	40.550	88.300	6870.50	141.32	578.51	108.25	40°10'54.581"N	104°58'40.143"W	11.04	
6996.00	44.540	88.720	6905.12	173.07	579.33	140.01	40°10'54.589"N	104°58'39.734"W	8.51	
7043.00	49.150	88.840	6937.26	207.33	580.06	174.28	40°10'54.596"N	104°58'39.293"W	9.81	
7090.00	53.090	89.590	6966.76	243.87	580.55	210.86	40°10'54.601"N	104°58'38.821"W	8.47	
7138.00	56.700	89.110	6994.36	283.09	581.00	250.12	40°10'54.605"N	104°58'38.315"W	7.57	
7185.00	59.850	89.640	7019.07	323.02	581.43	290.09	40°10'54.610"N	104°58'37.801"W	6.77	
7232.00	62.980	89.330	7041.55	364.24	581.81	331.35	40°10'54.613"N	104°58'37.269"W	6.68	
7279.00	66.360	89.810	7061.66	406.66	582.12	373.83	40°10'54.617"N	104°58'36.722"W	7.25	
7326.00	71.640	90.110	7078.50	450.45	582.15	417.69	40°10'54.617"N	104°58'36.157"W	11.25	
7373.00	75.420	90.220	7091.82	495.43	582.02	462.75	40°10'54.616"N	104°58'35.576"W	8.05	
7421.00	79.150	90.470	7102.38	542.15	581.74	509.57	40°10'54.613"N	104°58'34.973"W	7.79	
7474.00	83.640	90.270	7110.31	594.44	581.40	561.96	40°10'54.609"N	104°58'34.298"W	8.48	
7519.00†	86.261	88.265	7114.27	639.21	581.98	606.77	40°10'54.615"N	104°58'33.720"W	7.32	7" CASING POINT
7574.00	89.470	85.830	7116.32	694.16	584.81	661.65	40°10'54.643"N	104°58'33.013"W	7.32	
7666.00	89.380	86.760	7117.24	786.15	590.75	753.45	40°10'54.702"N	104°58'31.831"W	1.02	
7758.00	90.460	89.020	7117.37	878.13	594.14	845.38	40°10'54.735"N	104°58'30.646"W	2.72	
7850.00	90.430	90.200	7116.66	970.00	594.77	937.38	40°10'54.741"N	104°58'29.461"W	1.28	
7941.00	90.730	89.950	7115.74	1060.84	594.65	1028.37	40°10'54.740"N	104°58'28.289"W	0.43	
8033.00	90.270	90.940	7114.93	1152.64	593.93	1120.36	40°10'54.733"N	104°58'27.103"W	1.19	
8125.00	90.760	90.580	7114.11	1244.41	592.71	1212.35	40°10'54.721"N	104°58'25.918"W	0.66	
8216.00	90.640	91.430	7112.99	1335.14	591.12	1303.33	40°10'54.705"N	104°58'24.746"W	0.94	
8308.00	90.180	91.870	7112.34	1426.80	588.47	1395.29	40°10'54.679"N	104°58'23.561"W	0.69	
8400.00	89.630	91.430	7112.49	1518.45	585.82	1487.25	40°10'54.653"N	104°58'22.376"W	0.77	
8492.00	90.550	91.340	7112.34	1610.15	583.59	1579.22	40°10'54.631"N	104°58'21.192"W	1.00	

REFERENCE WELLPATH IDENTIFICATION

Operator	KERR-MCGEE OIL & GAS ONSHORE LP	Slot	SLOT#13 BAREFOOT STATE 40N-36HZ (1907'FSL & 373'FWL, SEC.35)
Area	COLORADO	Well	BAREFOOT STATE 40N-36HZ
Field	WELD COUNTY (KERR MCGEE)	Wellbore	BAREFOOT STATE 40N-36HZ AWB
Facility	SEC.35-T3N-R68W		

WELLPATH DATA (176 stations)

MD [ft]	Inclination [°]	Azimuth [°]	TVD [ft]	Vert Sect [ft]	North [ft]	East [ft]	Latitude	Longitude	DLS [°/100ft]	Comments
8586.00	89.720	91.360	7112.12	1703.84	581.38	1673.19	40°10'54.609"N	104°58'19.981"W	0.88	
8679.00	89.070	91.100	7113.10	1796.54	579.38	1766.17	40°10'54.589"N	104°58'18.783"W	0.75	
8772.00	89.440	90.780	7114.31	1889.28	577.86	1859.15	40°10'54.574"N	104°58'17.585"W	0.53	
8866.00	88.890	90.880	7115.68	1983.03	576.50	1953.13	40°10'54.560"N	104°58'16.374"W	0.59	
8960.00	89.290	90.850	7117.18	2076.77	575.08	2047.10	40°10'54.546"N	104°58'15.163"W	0.43	
9053.00	88.980	90.310	7118.58	2169.54	574.14	2140.09	40°10'54.537"N	104°58'13.965"W	0.67	
9147.00	89.810	90.920	7119.57	2263.32	573.13	2234.08	40°10'54.527"N	104°58'12.754"W	1.10	
9241.00	90.150	92.590	7119.61	2356.95	570.25	2328.03	40°10'54.498"N	104°58'11.544"W	1.81	
9335.00	89.130	91.240	7120.20	2450.56	567.11	2421.97	40°10'54.467"N	104°58'10.334"W	1.80	
9430.00	88.670	90.120	7122.02	2545.31	565.98	2516.94	40°10'54.456"N	104°58'09.110"W	1.27	
9525.00	89.230	90.270	7123.76	2640.12	565.66	2611.93	40°10'54.452"N	104°58'07.886"W	0.61	
9619.00	89.720	89.970	7124.62	2733.94	565.46	2705.92	40°10'54.450"N	104°58'06.675"W	0.61	
9713.00	88.760	90.140	7125.87	2827.77	565.37	2799.91	40°10'54.449"N	104°58'05.464"W	1.04	
9808.00	89.010	90.110	7127.72	2922.59	565.16	2894.89	40°10'54.447"N	104°58'04.241"W	0.27	
9902.00	89.320	90.050	7129.09	3016.41	565.03	2988.88	40°10'54.446"N	104°58'03.030"W	0.34	
9996.00	88.920	91.570	7130.53	3110.16	563.70	3082.86	40°10'54.433"N	104°58'01.819"W	1.67	
10090.00	89.070	89.800	7132.18	3203.91	562.58	3176.84	40°10'54.421"N	104°58'00.608"W	1.89	
10185.00	89.320	89.400	7133.52	3298.78	563.24	3271.82	40°10'54.428"N	104°57'59.384"W	0.50	
10279.00	89.870	89.180	7134.18	3392.69	564.41	3365.81	40°10'54.439"N	104°57'58.173"W	0.63	
10373.00	89.630	90.080	7134.59	3486.56	565.01	3459.81	40°10'54.445"N	104°57'56.962"W	0.99	
10467.00	89.690	90.090	7135.15	3580.40	564.87	3553.81	40°10'54.444"N	104°57'55.751"W	0.06	
10572.00	89.500	89.860	7135.89	3685.22	564.92	3658.81	40°10'54.444"N	104°57'54.398"W	0.28	
10664.00	89.750	89.950	7136.49	3777.08	565.07	3750.80	40°10'54.445"N	104°57'53.213"W	0.29	
10756.00	89.840	89.740	7136.82	3868.94	565.32	3842.80	40°10'54.448"N	104°57'52.028"W	0.25	
10849.00	88.550	90.430	7138.13	3961.76	565.18	3935.79	40°10'54.446"N	104°57'50.830"W	1.57	
10943.00	88.950	89.960	7140.18	4055.57	564.86	4029.77	40°10'54.443"N	104°57'49.619"W	0.66	
11036.00	89.290	89.850	7141.61	4148.41	565.02	4122.76	40°10'54.444"N	104°57'48.421"W	0.38	
11129.00	89.320	90.050	7142.73	4241.26	565.10	4215.75	40°10'54.445"N	104°57'47.223"W	0.22	
11223.00	89.260	89.560	7143.90	4335.11	565.42	4309.74	40°10'54.448"N	104°57'46.012"W	0.53	
11317.00	89.630	89.610	7144.81	4428.99	566.10	4403.73	40°10'54.454"N	104°57'44.801"W	0.40	
11410.00	89.320	89.400	7145.66	4521.87	566.90	4496.73	40°10'54.462"N	104°57'43.603"W	0.40	
11504.00	90.460	89.080	7145.84	4615.78	568.15	4590.72	40°10'54.474"N	104°57'42.392"W	1.26	
11599.00	90.610	88.440	7144.96	4710.71	570.21	4685.69	40°10'54.494"N	104°57'41.168"W	0.69	
11693.00	90.060	90.830	7144.41	4804.58	570.80	4779.68	40°10'54.500"N	104°57'39.957"W	2.61	
11787.00	90.060	90.420	7144.31	4898.36	569.78	4873.67	40°10'54.490"N	104°57'38.746"W	0.44	
11881.00	90.330	90.500	7143.99	4992.16	569.02	4967.67	40°10'54.482"N	104°57'37.535"W	0.30	
11976.00	89.660	90.810	7144.00	5086.93	567.94	5062.66	40°10'54.471"N	104°57'36.311"W	0.78	
12071.00	90.060	90.650	7144.23	5181.70	566.73	5157.65	40°10'54.459"N	104°57'35.087"W	0.45	
12165.00	89.130	91.000	7144.89	5275.45	565.37	5251.64	40°10'54.446"N	104°57'33.877"W	1.06	
12259.00	89.960	90.640	7145.64	5369.21	564.03	5345.63	40°10'54.432"N	104°57'32.666"W	0.96	
12354.00	89.530	91.110	7146.06	5463.95	562.58	5440.62	40°10'54.418"N	104°57'31.442"W	0.67	
12448.00	90.030	91.200	7146.42	5557.67	560.68	5534.60	40°10'54.399"N	104°57'30.231"W	0.54	
12542.00	88.920	90.850	7147.28	5651.40	559.00	5628.57	40°10'54.382"N	104°57'29.020"W	1.24	
12637.00	89.130	91.030	7148.90	5746.12	557.44	5723.55	40°10'54.366"N	104°57'27.797"W	0.29	
12732.00	89.290	90.950	7150.21	5840.85	555.80	5818.52	40°10'54.350"N	104°57'26.573"W	0.19	

REFERENCE WELLPATH IDENTIFICATION

Operator	KERR-MCGEE OIL & GAS ONSHORE LP	Slot	SLOT#13 BAREFOOT STATE 40N-36HZ (1907'FSL & 373'FWL, SEC.35)
Area	COLORADO	Well	BAREFOOT STATE 40N-36HZ
Field	WELD COUNTY (KERR MCGEE)	Wellbore	BAREFOOT STATE 40N-36HZ AWP
Facility	SEC.35-T3N-R68W		

WELLPATH DATA (176 stations)

MD [ft]	Inclination [°]	Azimuth [°]	TVD [ft]	Vert Sect [ft]	North [ft]	East [ft]	Latitude	Longitude	DLS [°/100ft]	Comments
12826.00	89.070	90.700	7151.56	5934.60	554.45	5912.51	40°10'54.336"N	104°57'25.362"W	0.35	
12920.00	89.290	90.630	7152.90	6028.36	553.36	6006.49	40°10'54.325"N	104°57'24.151"W	0.25	
13014.00	89.690	90.560	7153.74	6122.14	552.38	6100.48	40°10'54.315"N	104°57'22.940"W	0.43	
13109.00	89.750	90.380	7154.20	6216.94	551.60	6195.48	40°10'54.307"N	104°57'21.716"W	0.20	
13203.00	89.840	90.540	7154.54	6310.73	550.85	6289.47	40°10'54.300"N	104°57'20.505"W	0.20	
13297.00	90.060	90.430	7154.62	6404.53	550.05	6383.47	40°10'54.292"N	104°57'19.294"W	0.26	
13392.00	89.380	90.460	7155.08	6499.32	549.32	6478.46	40°10'54.284"N	104°57'18.070"W	0.72	
13486.00	89.380	89.740	7156.10	6593.15	549.15	6572.46	40°10'54.282"N	104°57'16.859"W	0.77	
13580.00	89.590	89.590	7156.95	6687.02	549.70	6666.45	40°10'54.287"N	104°57'15.648"W	0.27	
13674.00	89.410	89.400	7157.77	6780.91	550.53	6760.45	40°10'54.295"N	104°57'14.437"W	0.28	
13768.00	89.560	89.420	7158.61	6874.80	551.50	6854.44	40°10'54.305"N	104°57'13.226"W	0.16	
13862.00	89.780	89.030	7159.15	6968.71	552.77	6948.43	40°10'54.317"N	104°57'12.015"W	0.48	
13956.00	89.500	89.110	7159.74	7062.63	554.29	7042.41	40°10'54.332"N	104°57'10.805"W	0.31	
14050.00	90.180	89.050	7160.01	7156.54	555.80	7136.40	40°10'54.346"N	104°57'09.594"W	0.73	
14144.00	90.580	89.200	7159.38	7250.46	557.24	7230.39	40°10'54.360"N	104°57'08.383"W	0.45	
14239.00	90.800	89.660	7158.24	7345.34	558.18	7325.37	40°10'54.369"N	104°57'07.159"W	0.54	
14333.00	90.580	89.670	7157.11	7439.21	558.73	7419.36	40°10'54.374"N	104°57'05.948"W	0.23	
14428.00	89.500	90.780	7157.04	7534.03	558.36	7514.36	40°10'54.370"N	104°57'04.724"W	1.63	
14522.00	88.640	90.560	7158.57	7627.79	557.26	7608.34	40°10'54.359"N	104°57'03.513"W	0.94	
14617.00	89.130	90.520	7160.41	7722.56	556.37	7703.32	40°10'54.350"N	104°57'02.289"W	0.52	
14711.00	89.230	90.740	7161.76	7816.33	555.33	7797.30	40°10'54.340"N	104°57'01.079"W	0.26	
14805.00	89.380	90.660	7162.90	7910.10	554.18	7891.29	40°10'54.328"N	104°56'59.868"W	0.18	
14899.00	89.440	90.620	7163.87	8003.87	553.13	7985.28	40°10'54.317"N	104°56'58.657"W	0.08	
14994.00	89.500	90.590	7164.75	8098.64	552.13	8080.27	40°10'54.307"N	104°56'57.433"W	0.07	
15088.00	89.750	90.420	7165.36	8192.44	551.30	8174.26	40°10'54.299"N	104°56'56.222"W	0.32	
15182.00	90.090	89.990	7165.49	8286.26	550.97	8268.26	40°10'54.295"N	104°56'55.011"W	0.58	
15277.00	90.640	90.000	7164.89	8381.10	550.98	8363.26	40°10'54.295"N	104°56'53.787"W	0.58	
15371.00	89.590	89.370	7164.70	8474.97	551.49	8457.26	40°10'54.300"N	104°56'52.576"W	1.30	
15466.00	90.120	89.280	7164.94	8569.87	552.61	8552.25	40°10'54.310"N	104°56'51.352"W	0.57	
15560.00	90.150	89.730	7164.72	8663.76	553.42	8646.25	40°10'54.318"N	104°56'50.141"W	0.48	
15655.00	90.800	89.890	7163.93	8758.62	553.74	8741.24	40°10'54.321"N	104°56'48.917"W	0.70	
15749.00	89.200	89.920	7163.93	8852.47	553.89	8835.24	40°10'54.322"N	104°56'47.706"W	1.70	
15843.00	89.440	90.070	7165.05	8946.31	553.90	8929.23	40°10'54.322"N	104°56'46.495"W	0.30	
15938.00	89.560	90.070	7165.88	9041.14	553.79	9024.23	40°10'54.320"N	104°56'45.271"W	0.13	
16032.00	90.360	89.980	7165.94	9134.98	553.75	9118.23	40°10'54.320"N	104°56'44.060"W	0.86	
16126.00	90.490	90.240	7165.24	9228.81	553.56	9212.22	40°10'54.317"N	104°56'42.849"W	0.31	
16221.00	90.860	90.190	7164.12	9323.63	553.21	9307.22	40°10'54.314"N	104°56'41.625"W	0.39	
16315.00	91.010	90.260	7162.59	9417.44	552.84	9401.20	40°10'54.310"N	104°56'40.414"W	0.18	
16409.00	91.470	90.430	7160.56	9511.23	552.27	9495.18	40°10'54.304"N	104°56'39.203"W	0.52	
16436.00	91.530	90.350	7159.85	9538.16	552.09	9522.17	40°10'54.302"N	104°56'38.856"W	0.37	LAST BHI MWD+IFR SURVEY
16499.00	91.530	90.350	7158.17	9601.01	551.70	9585.15	40°10'54.298"N	104°56'38.044"W	0.00	PROJECTION TO BIT

REFERENCE WELLPATH IDENTIFICATION			
Operator	KERR-MCGEE OIL & GAS ONSHORE LP	Slot	SLOT#13 BAREFOOT STATE 40N-36HZ (1907'FSL & 373'FWL, SEC.35)
Area	COLORADO	Well	BAREFOOT STATE 40N-36HZ
Field	WELD COUNTY (KERR MCGEE)	Wellbore	BAREFOOT STATE 40N-36HZ AWB
Facility	SEC.35-T3N-R68W		

HOLE & CASING SECTIONS - Ref Wellbore: BAREFOOT STATE 40N-36HZ AWB Ref Wellpath: BAREFOOT STATE 40N-36HZ AWP									
String/Diameter	Start MD [ft]	End MD [ft]	Interval [ft]	Start TVD [ft]	End TVD [ft]	Start N/S [ft]	Start E/W [ft]	End N/S [ft]	End E/W [ft]
13.5in Open Hole	25.00	1005.00	980.00	25.00	1004.97	0.00	0.00	0.41	-5.40
9.625in Casing Surface	25.00	995.00	970.00	25.00	994.97	0.00	0.00	0.39	-5.32
8.75in Open Hole	1005.00	7538.00	6533.00	1004.97	7115.33	0.41	-5.40	582.69	625.73
7in Casing Intermediate	25.00	7519.00	7494.00	25.00	7114.27	0.00	0.00	581.98	606.77
6.125in Open Hole	7538.00	16499.00	8961.00	7115.33	7158.17	582.69	625.73	551.70	9585.15

WELLPATH COMPOSITION - Ref Wellbore: BAREFOOT STATE 40N-36HZ AWB Ref Wellpath: BAREFOOT STATE 40N-36HZ AWP				
Start MD [ft]	End MD [ft]	Positional Uncertainty Model	Log Name/Comment	Wellbore
25.00	939.00	Generic gyro - continuous (Standard)	MS GYRO SURVEYS <125-939>	BAREFOOT STATE 40N-36HZ AWB
939.00	7474.00	NaviTrak (IFR)	BHI NAVITRAK MWD+IFR 8 3/4" <1033-7474>	BAREFOOT STATE 40N-36HZ AWB
7474.00	16436.00	NaviTrak (IFR)	BHI NAVITRAK MWD+IFR 6 1/8" <7574-16436>	BAREFOOT STATE 40N-36HZ AWB
16436.00	16499.00	Blind Drilling (std)	Projection to bit	BAREFOOT STATE 40N-36HZ AWB

REFERENCE WELLPATH IDENTIFICATION				
Operator	KERR-MCGEE OIL & GAS ONSHORE LP	Slot	SLOT#13 BAREFOOT STATE 40N-36HZ (1907'FSL & 373'FWL, SEC.35)	
Area	COLORADO	Well	BAREFOOT STATE 40N-36HZ	
Field	WELD COUNTY (KERR MCGEE)	Wellbore	BAREFOOT STATE 40N-36HZ AWB	
Facility	SEC.35-T3N-R68W			

WELLPATH COMMENTS				
MD [ft]	Inclination [°]	Azimuth [°]	TVD [ft]	Comment
25.00	0.000	316.000	25.00	TIE ON
125.00	0.400	316.000	125.00	BEGIN GYRO SURVEYS
939.00	0.340	319.540	938.98	TIE ONTO GYRO SURVEYS
1033.00	0.590	276.410	1032.97	BEGIN BHI MWD+IFR SURVEYS
7519.00	86.261	88.265	7114.27	7" CASING POINT
16436.00	91.530	90.350	7159.85	LAST BHI MWD+IFR SURVEY
16499.00	91.530	90.350	7158.17	PROJECTION TO BIT