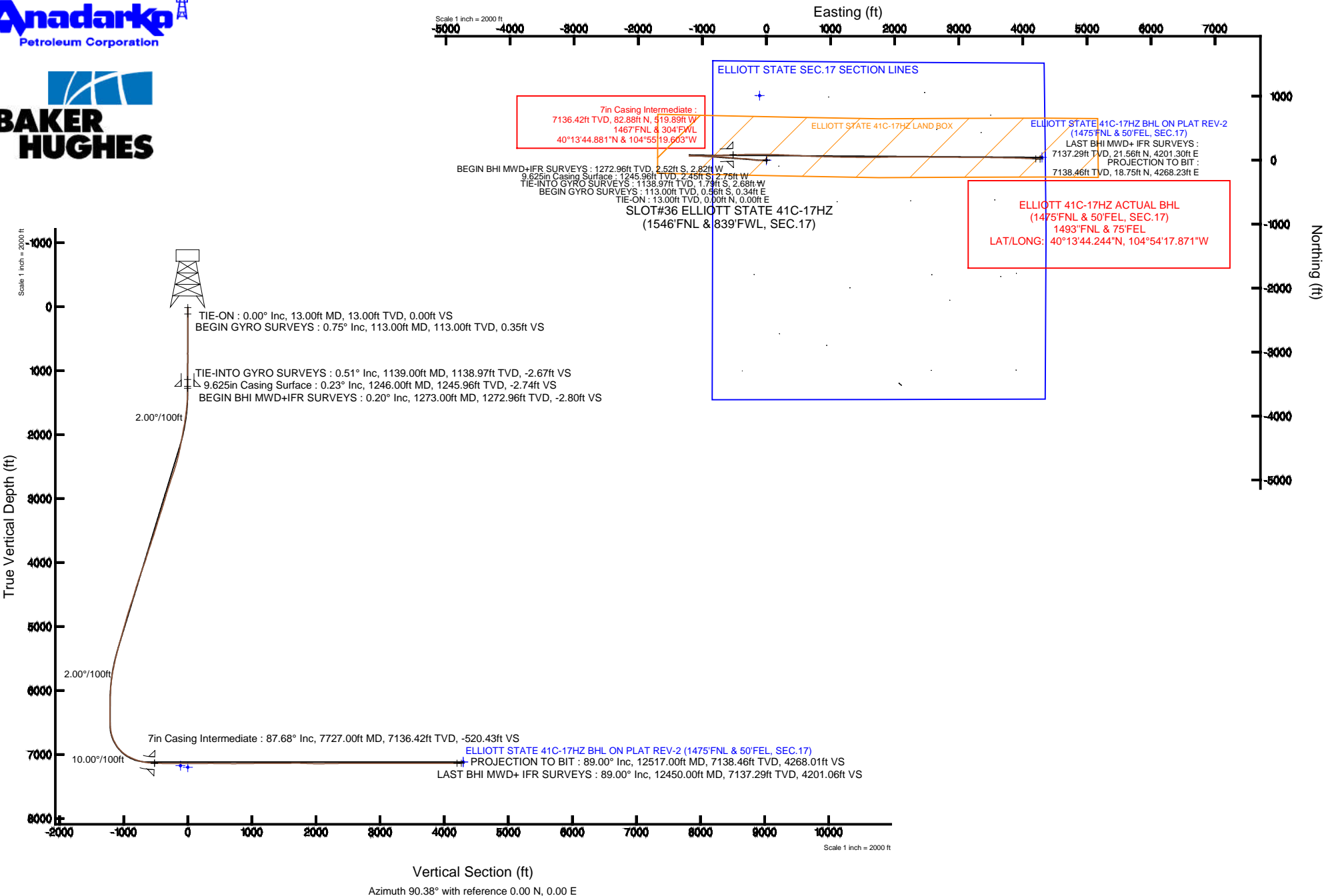


# KERR-MCGEE OIL & GAS ONSHORE LP

Location: COLORADO Slot: SLOT#36 ELLIOTT STATE 41C-17HZ (1546'FNL & 839'FWL, SEC.17)  
 Field: WELD COUNTY (KERR MCGEE) Well: ELLIOTT STATE 41C-17HZ  
 Facility: SEC.17-T3N-R67W Wellbore: ELLIOTT STATE 41C-17HZ PWB

Plot reference wellpath is ELLIOTT STATE 41C-17HZ (REV-A.0) PWP

True vertical depths are referenced to ENSIGN 138 (13' RKB) (RKB)	Grid System: NAD83 / Lambert Colorado SP, Northern Zone (501), US feet
Measured depths are referenced to ENSIGN 138 (13' RKB) (RKB)	North Reference: True north
ENSGN 138 (13' RKB) (RKB) to Mean Sea Level: 4825 feet	Scale: True distance
Mean Sea Level to Mud line (At Slot: SLOT#36 ELLIOTT STATE 41C-17HZ (1546'FNL & 839'FWL, SEC.17)): 0 feet	Depths are in feet
Coordinates are in feet referenced to Slot	Created by: ingnjamr on 6/20/2014



# Actual Wellpath Report

ELLIOTT STATE 41C-17HZ AWP

Page 1 of 8

## REFERENCE WELLPATH IDENTIFICATION

Operator	KERR-MCGEE OIL & GAS ONSHORE LP	Slot	SLOT#36 ELLIOTT STATE 41C-17HZ (1546'FNL & 839'FWL, SEC
Area	COLORADO	Well	ELLIOTT STATE 41C-17HZ
Field	WELD COUNTY (KERR MCGEE)	Wellbore	ELLIOTT STATE 41C-17HZ AWP
Facility	SEC.17-T3N-R67W		

## REPORT SETUP INFORMATION

Projection System	NAD83 / Lambert Colorado SP, Northern Zone (501), US feet	Software System	WellArchitect® 4.0.0
North Reference	True	User	Ingmjmr
Scale	0.999957	Report Generated	6/18/2014 at 12:36:47 PM
Convergence at slot	n/a	Database/Source file	Anadarko Map Checks/ELLIOTT_STATE_41C-17HZ_AWP.xml

## WELLPATH LOCATION

	Local coordinates		Grid coordinates		Geographic coordinates	
	North[ft]	East[ft]	Easting[US ft]	Northing[US ft]	Latitude	Longitude
Slot Location	16.80	-47.47	3161872.72	1326761.65	40°13'44.062"N	104°55'12.900"W
Facility Reference Pt			3161920.30	1326745.17	40°13'43.896"N	104°55'12.288"W
Field Reference Pt			3197771.84	1268891.29	40°04'09.600"N	104°47'36.000"W

## WELLPATH DATUM

Calculation method	Minimum curvature	ENSIGN 138 (13' RKB) (RKB) to Facility Vertical Datum	4825.00ft
Horizontal Reference Pt	Slot	ENSIGN 138 (13' RKB) (RKB) to Mean Sea Level	4825.00ft
Vertical Reference Pt	ENSIGN 138 (13' RKB) (RKB)	ENSIGN 138 (13' RKB) (RKB) to Mud Line at Slot (SLOT#36 ELLIOTT STATE 41C-17HZ (1546'FNL & 839'FWL, SEC.17))	4825.00ft
MD Reference Pt	ENSIGN 138 (13' RKB) (RKB)	Section Origin	N 0.00, E 0.00 ft
Field Vertical Reference	Mean Sea Level	Section Azimuth	89.75°

### REFERENCE WELLPATH IDENTIFICATION

Operator	KERR-MCGEE OIL & GAS ONSHORE LP	Slot	SLOT#36 ELLIOTT STATE 41C-17HZ (1546'FNL & 839'FWL, SEC
Area	COLORADO	Well	ELLIOTT STATE 41C-17HZ
Field	WELD COUNTY (KERR MCGEE)	Wellbore	ELLIOTT STATE 41C-17HZ AWP
Facility	SEC.17-T3N-R67W		

### WELLPATH DATA (123 stations) † = interpolated/extrapolated station

MD [ft]	Inclination [°]	Azimuth [°]	TVD [ft]	Vert Sect [ft]	North [ft]	East [ft]	Latitude	Longitude	DLS [°/100ft]	Comments
0.00†	0.000	148.440	0.00	0.00	0.00	0.00	40°13'44.062"N	104°55'12.900"W	0.00	
13.00	0.000	148.440	13.00	0.00	0.00	0.00	40°13'44.062"N	104°55'12.900"W	0.00	TIE-ON
113.00	0.750	148.440	113.00	0.34	-0.56	0.34	40°13'44.056"N	104°55'12.896"W	0.75	BEGIN GYRO SURVEYS
213.00	0.680	244.460	212.99	0.14	-1.37	0.15	40°13'44.048"N	104°55'12.898"W	1.06	
313.00	0.220	30.560	312.99	-0.29	-1.46	-0.29	40°13'44.048"N	104°55'12.904"W	0.87	
413.00	0.650	173.200	412.99	-0.13	-1.86	-0.12	40°13'44.044"N	104°55'12.902"W	0.84	
513.00	0.780	261.390	512.98	-0.74	-2.52	-0.73	40°13'44.037"N	104°55'12.909"W	1.00	
613.00	0.320	347.430	612.98	-1.47	-2.35	-1.46	40°13'44.039"N	104°55'12.919"W	0.82	
713.00	0.180	342.140	712.98	-1.58	-1.93	-1.57	40°13'44.043"N	104°55'12.920"W	0.14	
813.00	0.350	135.920	812.98	-1.42	-2.00	-1.41	40°13'44.042"N	104°55'12.918"W	0.52	
913.00	0.790	279.330	912.98	-1.88	-2.11	-1.88	40°13'44.041"N	104°55'12.924"W	1.09	
1013.00	0.580	351.400	1012.97	-2.64	-1.50	-2.63	40°13'44.047"N	104°55'12.934"W	0.82	
1113.00	0.620	178.910	1112.97	-2.70	-1.54	-2.70	40°13'44.047"N	104°55'12.935"W	1.20	
1139.00	0.510	174.910	1138.97	-2.69	-1.79	-2.68	40°13'44.044"N	104°55'12.935"W	0.45	TIE-INTO GYRO SURVEYS
1273.00	0.200	234.200	1272.96	-2.83	-2.52	-2.82	40°13'44.037"N	104°55'12.936"W	0.33	BEGIN BHI MWD+IFR SURVEYS
1304.00	0.300	346.200	1303.96	-2.89	-2.48	-2.88	40°13'44.038"N	104°55'12.937"W	1.35	
1398.00	2.900	293.600	1397.92	-5.13	-1.29	-5.12	40°13'44.049"N	104°55'12.966"W	2.90	
1492.00	4.300	289.700	1491.73	-10.62	0.85	-10.62	40°13'44.070"N	104°55'13.037"W	1.51	
1587.00	5.600	271.500	1586.38	-18.60	2.18	-18.61	40°13'44.084"N	104°55'13.140"W	2.13	
1679.00	7.300	272.800	1677.80	-28.92	2.58	-28.93	40°13'44.087"N	104°55'13.273"W	1.85	
1770.00	8.500	269.800	1767.93	-41.42	2.84	-41.43	40°13'44.090"N	104°55'13.434"W	1.39	
1862.00	10.000	265.900	1858.73	-56.19	2.24	-56.20	40°13'44.084"N	104°55'13.625"W	1.77	
2229.00	11.300	268.300	2219.41	-123.93	-1.10	-123.93	40°13'44.051"N	104°55'14.498"W	0.37	
2320.00	13.000	268.900	2308.36	-143.08	-1.56	-143.07	40°13'44.047"N	104°55'14.745"W	1.87	
2412.00	15.200	273.600	2397.59	-165.46	-1.00	-165.46	40°13'44.052"N	104°55'15.033"W	2.69	
2503.00	16.900	279.500	2485.05	-190.40	1.93	-190.41	40°13'44.081"N	104°55'15.355"W	2.59	
2594.00	18.800	284.100	2571.67	-217.65	7.68	-217.69	40°13'44.138"N	104°55'15.707"W	2.60	
2686.00	18.800	281.300	2658.76	-246.54	14.20	-246.60	40°13'44.202"N	104°55'16.079"W	0.98	
2778.00	18.800	276.400	2745.86	-275.79	18.76	-275.87	40°13'44.247"N	104°55'16.457"W	1.72	
2869.00	17.800	275.800	2832.25	-304.18	21.80	-304.28	40°13'44.277"N	104°55'16.823"W	1.12	

### REFERENCE WELLPATH IDENTIFICATION

Operator	KERR-MCGEE OIL & GAS ONSHORE LP	Slot	SLOT#36 ELLIOTT STATE 41C-17HZ (1546'FNL & 839'FWL, SEC
Area	COLORADO	Well	ELLIOTT STATE 41C-17HZ
Field	WELD COUNTY (KERR MCGEE)	Wellbore	ELLIOTT STATE 41C-17HZ AWP
Facility	SEC.17-T3N-R67W		

### WELLPATH DATA (123 stations)

MD [ft]	Inclination [°]	Azimuth [°]	TVD [ft]	Vert Sect [ft]	North [ft]	East [ft]	Latitude	Longitude	DLS [°/100ft]	Comments
2961.00	16.300	272.700	2920.21	-331.06	23.83	-331.17	40°13'44.297"N	104°55'17.170"W	1.91	
3053.00	17.000	270.600	3008.35	-357.40	24.58	-357.51	40°13'44.305"N	104°55'17.509"W	1.00	
3144.00	16.700	271.400	3095.45	-383.77	25.04	-383.89	40°13'44.309"N	104°55'17.849"W	0.42	
3235.00	17.400	273.100	3182.45	-410.43	26.09	-410.55	40°13'44.320"N	104°55'18.193"W	0.94	
3326.00	18.500	275.700	3269.02	-438.37	28.26	-438.50	40°13'44.341"N	104°55'18.553"W	1.50	
3421.00	17.100	275.500	3359.47	-467.26	31.10	-467.40	40°13'44.369"N	104°55'18.926"W	1.48	
3516.00	17.000	275.300	3450.29	-494.98	33.72	-495.13	40°13'44.395"N	104°55'19.284"W	0.12	
3612.00	18.000	274.900	3541.85	-523.72	36.28	-523.89	40°13'44.420"N	104°55'19.654"W	1.05	
3707.00	18.200	275.000	3632.15	-553.11	38.83	-553.29	40°13'44.446"N	104°55'20.033"W	0.21	
3801.00	18.200	276.000	3721.44	-582.32	41.64	-582.51	40°13'44.473"N	104°55'20.410"W	0.33	
3895.00	18.000	276.100	3810.79	-611.35	44.72	-611.55	40°13'44.504"N	104°55'20.785"W	0.22	
3990.00	17.600	274.600	3901.24	-640.25	47.43	-640.47	40°13'44.531"N	104°55'21.157"W	0.64	
4085.00	18.800	276.800	3991.49	-669.76	50.40	-669.98	40°13'44.560"N	104°55'21.538"W	1.46	
4179.00	19.700	273.400	4080.24	-700.60	53.13	-700.84	40°13'44.587"N	104°55'21.936"W	1.53	
4273.00	19.000	271.400	4168.93	-731.71	54.44	-731.95	40°13'44.600"N	104°55'22.337"W	1.03	
4368.00	18.600	272.700	4258.86	-762.30	55.53	-762.55	40°13'44.611"N	104°55'22.731"W	0.61	
4557.00	16.600	270.900	4439.01	-819.40	57.38	-819.66	40°13'44.629"N	104°55'23.468"W	1.10	
4653.00	16.900	272.100	4530.93	-847.05	58.10	-847.31	40°13'44.636"N	104°55'23.824"W	0.48	
4749.00	18.600	271.900	4622.36	-876.29	59.12	-876.56	40°13'44.646"N	104°55'24.201"W	1.77	
4938.00	17.000	271.200	4802.31	-934.04	60.70	-934.31	40°13'44.662"N	104°55'24.946"W	0.85	
5032.00	15.400	271.800	4892.57	-960.25	61.38	-960.53	40°13'44.668"N	104°55'25.284"W	1.71	
5126.00	16.600	272.500	4982.93	-986.13	62.36	-986.42	40°13'44.678"N	104°55'25.618"W	1.29	
5222.00	15.200	274.500	5075.25	-1012.38	63.95	-1012.67	40°13'44.694"N	104°55'25.956"W	1.57	
5316.00	15.800	273.400	5165.83	-1037.43	65.67	-1037.73	40°13'44.711"N	104°55'26.279"W	0.71	
5411.00	16.300	271.500	5257.13	-1063.66	66.79	-1063.96	40°13'44.722"N	104°55'26.617"W	0.76	
5505.00	14.700	269.000	5347.71	-1088.77	66.92	-1089.08	40°13'44.723"N	104°55'26.941"W	1.84	
5600.00	14.200	270.400	5439.71	-1112.48	66.80	-1112.78	40°13'44.722"N	104°55'27.247"W	0.64	
5694.00	12.100	267.500	5531.24	-1133.85	66.45	-1134.16	40°13'44.718"N	104°55'27.522"W	2.34	
5789.00	11.900	269.700	5624.16	-1153.60	65.96	-1153.90	40°13'44.714"N	104°55'27.777"W	0.53	
5883.00	10.000	274.300	5716.45	-1171.43	66.52	-1171.73	40°13'44.719"N	104°55'28.007"W	2.22	

## REFERENCE WELLPATH IDENTIFICATION

Operator	KERR-MCGEE OIL & GAS ONSHORE LP	Slot	SLOT#36 ELLIOTT STATE 41C-17HZ (1546'FNL & 839'FWL, SEC
Area	COLORADO	Well	ELLIOTT STATE 41C-17HZ
Field	WELD COUNTY (KERR MCGEE)	Wellbore	ELLIOTT STATE 41C-17HZ AWB
Facility	SEC.17-T3N-R67W		

## WELLPATH DATA (123 stations) † = interpolated/extrapolated station

MD [ft]	Inclination [°]	Azimuth [°]	TVD [ft]	Vert Sect [ft]	North [ft]	East [ft]	Latitude	Longitude	DLS [°/100ft]	Comments
5977.00	7.900	279.100	5809.30	-1185.94	68.16	-1186.25	40°13'44.735"N	104°55'28.194"W	2.37	
6072.00	6.100	275.200	5903.59	-1197.41	69.65	-1197.72	40°13'44.750"N	104°55'28.342"W	1.96	
6166.00	3.400	273.600	5997.26	-1205.16	70.27	-1205.48	40°13'44.756"N	104°55'28.442"W	2.88	
6261.00	1.600	272.900	6092.16	-1209.29	70.52	-1209.62	40°13'44.759"N	104°55'28.495"W	1.89	
6355.00	0.900	264.300	6186.14	-1211.34	70.51	-1211.66	40°13'44.758"N	104°55'28.522"W	0.77	
6450.00	0.900	273.400	6281.13	-1212.83	70.48	-1213.15	40°13'44.758"N	104°55'28.541"W	0.15	
6638.00	0.900	89.000	6469.12	-1212.82	70.59	-1213.15	40°13'44.759"N	104°55'28.541"W	0.96	
6733.00	5.000	90.400	6563.97	-1207.94	70.58	-1208.26	40°13'44.759"N	104°55'28.478"W	4.32	
6828.00	10.700	85.600	6658.04	-1194.99	71.23	-1195.31	40°13'44.766"N	104°55'28.311"W	6.03	
6922.00	21.800	91.900	6748.15	-1168.76	71.32	-1169.09	40°13'44.766"N	104°55'27.973"W	11.94	
7018.00	30.600	92.600	6834.21	-1126.46	69.61	-1126.78	40°13'44.750"N	104°55'27.427"W	9.17	
7113.00	39.500	91.600	6911.90	-1072.00	67.67	-1072.31	40°13'44.730"N	104°55'26.725"W	9.39	
7207.00	50.600	89.000	6978.21	-1005.59	67.47	-1005.90	40°13'44.729"N	104°55'25.869"W	11.97	
7302.00	62.000	88.800	7030.84	-926.70	68.99	-927.01	40°13'44.744"N	104°55'24.852"W	12.00	
7396.00	67.700	87.400	7070.77	-841.68	71.84	-842.01	40°13'44.772"N	104°55'23.756"W	6.21	
7491.00	73.500	87.200	7102.31	-752.20	76.06	-752.54	40°13'44.813"N	104°55'22.602"W	6.11	
7585.00	80.000	88.100	7123.85	-660.81	79.80	-661.17	40°13'44.850"N	104°55'21.424"W	6.98	
7671.00	86.800	89.200	7133.73	-575.45	81.80	-575.81	40°13'44.870"N	104°55'20.324"W	8.01	
7727.00†	87.676	88.590	7136.42	-519.52	82.88	-519.89	40°13'44.881"N	104°55'19.603"W	1.91	7" CASING POINT
7818.00	89.100	87.600	7138.98	-428.60	85.91	-428.98	40°13'44.911"N	104°55'18.431"W	1.91	
7912.00	89.400	88.500	7140.21	-334.65	89.11	-335.04	40°13'44.943"N	104°55'17.220"W	1.01	
8007.00	89.600	89.700	7141.04	-239.66	90.60	-240.06	40°13'44.957"N	104°55'15.995"W	1.28	
8102.00	90.100	89.900	7141.29	-144.66	90.93	-145.06	40°13'44.961"N	104°55'14.770"W	0.57	
8196.00	89.600	90.200	7141.54	-50.66	90.85	-51.06	40°13'44.960"N	104°55'13.558"W	0.62	
8289.00	90.300	91.100	7141.62	42.33	89.79	41.93	40°13'44.949"N	104°55'12.359"W	1.23	
8383.00	90.700	91.700	7140.80	136.28	87.50	135.90	40°13'44.927"N	104°55'11.148"W	0.77	
8477.00	90.400	92.100	7139.90	230.21	84.38	229.84	40°13'44.896"N	104°55'09.937"W	0.53	
8572.00	90.200	92.800	7139.40	325.10	80.32	324.75	40°13'44.856"N	104°55'08.713"W	0.77	
8667.00	89.500	92.700	7139.65	419.97	75.76	419.64	40°13'44.811"N	104°55'07.490"W	0.74	
8761.00	89.000	93.200	7140.88	513.82	70.92	513.51	40°13'44.763"N	104°55'06.279"W	0.75	

### REFERENCE WELLPATH IDENTIFICATION

Operator	KERR-MCGEE OIL & GAS ONSHORE LP	Slot	SLOT#36 ELLIOTT STATE 41C-17HZ (1546'FNL & 839'FWL, SEC
Area	COLORADO	Well	ELLIOTT STATE 41C-17HZ
Field	WELD COUNTY (KERR MCGEE)	Wellbore	ELLIOTT STATE 41C-17HZ AWB
Facility	SEC.17-T3N-R67W		

### WELLPATH DATA (123 stations)

MD [ft]	Inclination [°]	Azimuth [°]	TVD [ft]	Vert Sect [ft]	North [ft]	East [ft]	Latitude	Longitude	DLS [°/100ft]	Comments
8856.00	89.300	92.400	7142.29	608.67	66.28	608.39	40°13'44.717"N	104°55'05.056"W	0.90	
8950.00	90.000	92.600	7142.86	702.56	62.18	702.29	40°13'44.676"N	104°55'03.845"W	0.77	
9044.00	90.300	91.900	7142.62	796.47	58.49	796.22	40°13'44.640"N	104°55'02.634"W	0.81	
9139.00	91.200	91.500	7141.37	891.41	55.67	891.17	40°13'44.612"N	104°55'01.410"W	1.04	
9233.00	90.600	91.300	7139.90	985.35	53.38	985.13	40°13'44.589"N	104°55'00.199"W	0.67	
9328.00	90.100	91.900	7139.32	1080.30	50.73	1080.09	40°13'44.563"N	104°54'58.975"W	0.82	
9422.00	90.800	90.900	7138.58	1174.26	48.43	1174.06	40°13'44.540"N	104°54'57.763"W	1.30	
9611.00	89.800	90.600	7137.59	1363.22	45.96	1363.04	40°13'44.516"N	104°54'55.327"W	0.55	
9707.00	90.600	90.500	7137.25	1459.21	45.03	1459.03	40°13'44.507"N	104°54'54.089"W	0.84	
9799.00	90.200	90.500	7136.61	1551.20	44.23	1551.02	40°13'44.499"N	104°54'52.903"W	0.43	
9894.00	90.900	89.800	7135.70	1646.20	43.98	1646.02	40°13'44.496"N	104°54'51.678"W	1.04	
10083.00	87.400	88.200	7138.50	1835.12	47.28	1834.93	40°13'44.529"N	104°54'49.243"W	2.04	
10177.00	88.300	88.700	7142.03	1929.03	49.82	1928.83	40°13'44.554"N	104°54'48.032"W	1.10	
10272.00	89.300	89.600	7144.02	2024.00	51.23	2023.80	40°13'44.567"N	104°54'46.808"W	1.42	
10368.00	91.500	89.900	7143.35	2119.99	51.65	2119.79	40°13'44.571"N	104°54'45.570"W	2.31	
10462.00	91.000	90.200	7141.30	2213.97	51.57	2213.77	40°13'44.571"N	104°54'44.358"W	0.62	
10558.00	90.600	90.400	7139.96	2309.96	51.06	2309.75	40°13'44.566"N	104°54'43.121"W	0.47	
10653.00	91.000	90.700	7138.63	2404.94	50.15	2404.74	40°13'44.556"N	104°54'41.896"W	0.53	
10748.00	90.000	90.300	7137.80	2499.92	49.32	2499.73	40°13'44.548"N	104°54'40.671"W	1.13	
10844.00	89.900	90.600	7137.89	2595.92	48.57	2595.73	40°13'44.541"N	104°54'39.434"W	0.33	
10937.00	89.800	90.800	7138.13	2688.90	47.43	2688.72	40°13'44.529"N	104°54'38.235"W	0.24	
11032.00	90.600	90.200	7137.80	2783.89	46.60	2783.72	40°13'44.521"N	104°54'37.010"W	1.05	
11128.00	90.400	90.200	7136.96	2879.89	46.27	2879.71	40°13'44.518"N	104°54'35.772"W	0.21	
11222.00	90.300	90.400	7136.39	2973.88	45.78	2973.71	40°13'44.513"N	104°54'34.561"W	0.24	
11411.00	89.300	90.100	7137.04	3162.87	44.95	3162.70	40°13'44.504"N	104°54'32.124"W	0.55	
11506.00	89.600	90.200	7137.96	3257.86	44.70	3257.70	40°13'44.502"N	104°54'30.899"W	0.33	
11600.00	89.900	90.800	7138.37	3351.85	43.88	3351.69	40°13'44.493"N	104°54'29.687"W	0.71	
11694.00	90.600	90.500	7137.96	3445.84	42.82	3445.69	40°13'44.483"N	104°54'28.475"W	0.81	
11883.00	89.900	91.100	7137.13	3634.80	40.18	3634.66	40°13'44.456"N	104°54'26.039"W	0.49	
12072.00	89.700	91.000	7137.79	3823.75	36.71	3823.63	40°13'44.422"N	104°54'23.603"W	0.12	

# Actual Wellpath Report

ELLIOTT STATE 41C-17HZ AWP

Page 6 of 8

## REFERENCE WELLPATH IDENTIFICATION

Operator	KERR-MCGEE OIL & GAS ONSHORE LP	Slot	SLOT#36 ELLIOTT STATE 41C-17HZ (1546'FNL & 839'FWL, SEC
Area	COLORADO	Well	ELLIOTT STATE 41C-17HZ
Field	WELD COUNTY (KERR MCGEE)	Wellbore	ELLIOTT STATE 41C-17HZ AWB
Facility	SEC.17-T3N-R67W		

## WELLPATH DATA (123 stations)

MD [ft]	Inclination [°]	Azimuth [°]	TVD [ft]	Vert Sect [ft]	North [ft]	East [ft]	Latitude	Longitude	DLS [°/100ft]	Comments
12262.00	90.800	92.900	7136.96	4013.60	30.25	4013.51	40°13'44.358"N	104°54'21.155"W	1.16	
12450.00	89.000	92.400	7137.29	4201.35	21.56	4201.30	40°13'44.271"N	104°54'18.734"W	0.99	LAST BHI MWD+ IFR SURVEYS
12517.00	89.000	92.400	7138.46	4268.27	18.75	4268.23	40°13'44.244"N	104°54'17.871"W	0.00	PROJECTION TO BIT

## HOLE & CASING SECTIONS - Ref Wellbore: ELLIOTT STATE 41C-17HZ AWB Ref Wellpath: ELLIOTT STATE 41C-17HZ AWP

String/Diameter	Start MD [ft]	End MD [ft]	Interval [ft]	Start TVD [ft]	End TVD [ft]	Start N/S [ft]	Start E/W [ft]	End N/S [ft]	End E/W [ft]
13.5in Open Hole	13.00	1243.00	1230.00	13.00	1242.96	0.00	0.00	-2.44	-2.75
9.625in Casing Surface	13.00	1246.00	1233.00	13.00	1245.96	0.00	0.00	-2.45	-2.75
8.75in Open Hole	1243.00	7734.00	6491.00	1242.96	7136.70	-2.44	-2.75	83.06	-512.90
7in Casing Intermediate	13.00	7727.00	7714.00	13.00	7136.42	0.00	0.00	82.88	-519.89
6.125in Open Hole	7734.00	12517.00	4783.00	7136.70	7138.46	83.06	-512.90	18.75	4268.23

# Actual Wellpath Report

ELLIOTT STATE 41C-17HZ AWP

Page 7 of 8

## REFERENCE WELLPATH IDENTIFICATION

Operator	KERR-MCGEE OIL & GAS ONSHORE LP	Slot	SLOT#36 ELLIOTT STATE 41C-17HZ (1546'FNL & 839'FWL, SEC
Area	COLORADO	Well	ELLIOTT STATE 41C-17HZ
Field	WELD COUNTY (KERR MCGEE)	Wellbore	ELLIOTT STATE 41C-17HZ AWB
Facility	SEC.17-T3N-R67W		

## TARGETS

Name	MD [ft]	TVD [ft]	North [ft]	East [ft]	Grid East [US ft]	Grid North [US ft]	Latitude	Longitude	Shape
ELLIOTT STATE 41C-17HZ BHL ON PLAT REV-1 (1325'FNL & 50'FEL, SEC.17)		7118.00	193.78	4297.53	3166168.70	1326983.51	40°13'45.973"N	104°54'17.492"W	point
ELLIOTT STATE 41C-17HZ BHL ON PLAT REV-2 (1475'FNL & 50'FEL, SEC.17)		7118.00	43.78	4297.53	3166169.68	1326833.52	40°13'44.491"N	104°54'17.493"W	point
ELLIOTT STATE SEC.17 SECTION LINES		7176.00	1009.80	-107.78	3161758.35	1327770.68	40°13'54.041"N	104°55'14.290"W	polygon
ELLIOTT STATE 41C-17HZ LAND BOX		7200.00	0.00	0.00	3161872.72	1326761.65	40°13'44.062"N	104°55'12.900"W	polygon

## WELLPATH COMPOSITION - Ref Wellbore: ELLIOTT STATE 41C-17HZ AWB Ref Wellpath: ELLIOTT STATE 41C-17HZ AWP

Start MD [ft]	End MD [ft]	Positional Uncertainty Model	Log Name/Comment	Wellbore
13.00	1139.00	Generic gyro - continuous (Standard)	MS ENERGY GYRODATA SURVEYS <113-1139>	ELLIOTT STATE 41C-17HZ AWB
1139.00	7671.00	NaviTrak (IFR)	BHI MWD/NAVITRAK (IFR) 8.75" HOLE < 1273-7671>	ELLIOTT STATE 41C-17HZ AWB
7671.00	12450.00	NaviTrak (IFR)	BHI MWD/NAVITRAK (IFR) 6.125" HOLE <7818-12450>	ELLIOTT STATE 41C-17HZ AWB
12450.00	12517.00	Blind Drilling (std)	Projection to bit	ELLIOTT STATE 41C-17HZ AWB



# Actual Wellpath Report

ELLIOTT STATE 41C-17HZ AWP

Page 8 of 8

## REFERENCE WELLPATH IDENTIFICATION

Operator	KERR-MCGEE OIL & GAS ONSHORE LP	Slot	SLOT#36 ELLIOTT STATE 41C-17HZ (1546'FNL & 839'FWL, SEC
Area	COLORADO	Well	ELLIOTT STATE 41C-17HZ
Field	WELD COUNTY (KERR MCGEE)	Wellbore	ELLIOTT STATE 41C-17HZ AWB
Facility	SEC.17-T3N-R67W		

## WELLPATH COMMENTS

MD [ft]	Inclination [°]	Azimuth [°]	TVD [ft]	Comment
13.00	0.000	148.440	13.00	TIE-ON
113.00	0.750	148.440	113.00	BEGIN GYRO SURVEYS
1139.00	0.510	174.910	1138.97	TIE-INTO GYRO SURVEYS
1273.00	0.200	234.200	1272.96	BEGIN BHI MWD+IFR SURVEYS
7727.00	87.676	88.590	7136.42	7" CASING POINT
12450.00	89.000	92.400	7137.29	LAST BHI MWD+ IFR SURVEYS
12517.00	89.000	92.400	7138.46	PROJECTION TO BIT