



Scale: 7.95" / 100'
Measured Depth Log

Well Name Elliott State 41C-17HZ

Location NWNW SEC 17, T3N, R67W

State COLORADO County WELD

Country WELD Rig Number ENSIGN #138

API Number 05-123-39080 Field WATTEBERG

Region DJ BASIN Drilling Completed 5/30/2014

Spud Date 5/23/2014

Surface Coordinates 1546' FNL & 839' FWL

Bottom Hole Coordinates 1325' FFNL & 50' FFELL

Ground Elevation 4812' K.B. Elevation 4825'

Logged Interval 6800' To 12517' Total Depth 12517'

Formation CODELL SANDSTONE

Type of Drilling Fluid LSND, H2O

Operator

Company Anadarko

Address GRANITE TOWER
1099 18TH ST, SUITE #1800
DENVER, CO 80202

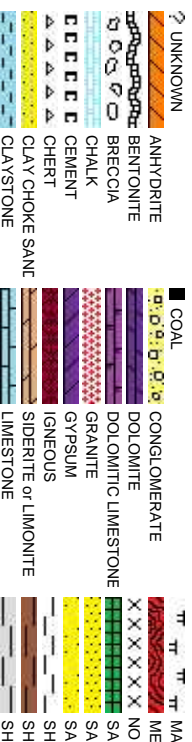
Geologist

Name ZACH UBER & CHRIS JOHNSON
Company COLUMBINE LOGGING, INC.
Address 2385 S. LIPAN ST.
DENVER, CO 80223

Zone Color Coding



Rock Types



Accessories

Fossils

- GASTROPOD
- INOCERAMUS
- OOOLITE
- OSTRACOD
- BELEMNITE
- BIOCLASTIC
- BRACHIOPOD
- BRYOZOA
- CEPHALOPOD
- CORAL
- CRINOID
- ECHINOID
- FISH
- FORAMINIFERA
- FOSSIL

Minerals

- ARGILLITE GRAIN
- BENTONITE
- BITUMENOUS SUBSTANCE
- BRECCIA FRAGMENTS
- CALCAREOUS
- CARBONACEOUS FLAKES
- CHITL
- CHITL
- COAL - THIN BEDS
- DOLOMITIC
- FELDSPAR
- FERRUGINOUS PELLET
- FERRUGINOUS
- GLAUCONITE
- GYPSIFEROUS
- HEAVY MINERAL
- KAOLIN
- MARCASITE
- MARLSTONE
- MICACEOUS
- MINERAL CRYSTALS
- NODULES
- PHOSPHATE PELLETS
- PYRITE
- SALT CAST
- SANDY
- SIDERITE
- SILICEOUS
- SILTY
- TUFFACEOUS

Stringer

- ANHYDRITE STRINGER
- BENTONITE STRINGER
- COAL STRINGER
- DOLOMITE STRINGER
- GYPSUM STRINGER
- LIMESTONE STRINGER
- MARLSTONE (CALC) STRG
- MARLSTONE (DOL) STRG
- SANDSTONE STRINGER
- SHALE STRINGER
- SILTSTONE STRINGER

Other Symbols

Oil Show

- PINPOINT
- VUGGY
- DEAD
- EVEN
- QUESTIONABLE
- BIT
- SPOTTED STAINING
- CONNECTION (UP)

Engineering

- DST INTERVAL
- FAULT
- FORMATION TOP
- GAS SHOW
- OIL SHOW
- MN DEPTH UP

Rounding

- WIRELINE TESTED - LEFT
- E EARTHY
- WIRELINE TESTED - RT
- FINELYXLN
- DRILL STEM TEST
- MN DEPTH
- L LITHOGRAPHIC
- MX MICROXLN
- MUDSTONE

Porosity

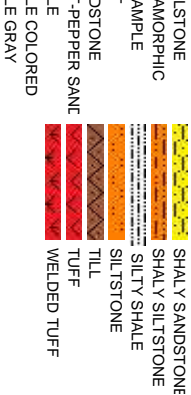
- CONNECTION (DOWN)
- CONNECTION GAS
- CONNECTION GAS (LEFT)
- TRIP GAS
- TRIP GAS (LEFT)
- DOWN TIME GAS
- DOWN TIME GAS (LEFT)
- CORE - LOST
- CORE - RECOVERED

Textures

- INTERCRYSTALLINE
- INTEROOLITIC
- MOLDIC
- ORGANIC
- SHALY SANDSTONE
- SHALY SILTSTONE
- SILTSTONE
- TILL
- TUFF
- WELDED TUFF

Sorting

- POOR
- MODERATE
- WELL



Slide/Rotate

ROP SCALE:
0 -500 FT/HR

ROP
ROP
GAMMA

GAMMA SCALE:
0 -300 API

Total Gas & Chromatograph

GAS
C1
C2
C3
C4

PASON TOTAL GAS
IN "GAS 10000" UNITS

Depth Labels

% Lith

6000

100' SAMPLE INTERVALS

Well Bore
TVD

TVD (ft)

COLUMBINE LOGGING INC.
RIGGED UP ON 05/24/2014
BEGAN LOGGING ON
05/25/2014 @ 09:50 HRS MST

MD: 6,828'
TVD: 6,658.04'
Inclination: 10.7°
Azimuth: 85.6°
VS: -1,195.77'

100% SLTY SH: lt-med gy brn, sme dk gy, mot lp, frm-hd, sb blk-y-sb ply, silty tex, sl calc

8000

Oil Show

63
66
59
34
16

Images



6,810

6,820

6,830

6,840

6,850

6,860

6,870

6,880

6,890

6,900

6,910

6,920

6,930

6,940

6,950

6,960

6,970

6,980

6,990

7,000

7,010

7,020

7,030

7,040

7,050

7,060

7,070

7,080

7,090

7,100

7,110

7,120

7,130

7,140

7,150

7,160

7,170

7,180

7,190

7,200

7,210

7,220

7,230

7,240

7,250

7,260

7,270

7,280

7,290

7,300

7,310

7,320

7,330

7,340

7,350

7,360

7,370

7,380

7,390

7,400

7,410

7,420

7,430

7,440

7,450

7,460

7,470

7,480

7,490

7,500

7,510

7,520

7,530

7,540

7,550

7,560

7,570

7,580

7,590

7,600

2473u

GAS (units)
C1-C4 (PPM)

ROP (ft/hr)

GAMMA (api)

0

0

0

0

0

0

0

0

0

0

0

0

0

0

0

0

0

0

0

0

0

0

0

0

0

0

0

0

0

0

0

0

0

0

0

0

0

0

0

0

0

0

0

0

0

0

0

0

0

0

0

0

0

0

0

0

0

0

0

0

0

0

0

0

0

0

0

0

0

0

0

0

0

0

0

0

0

0

0

0

0

0

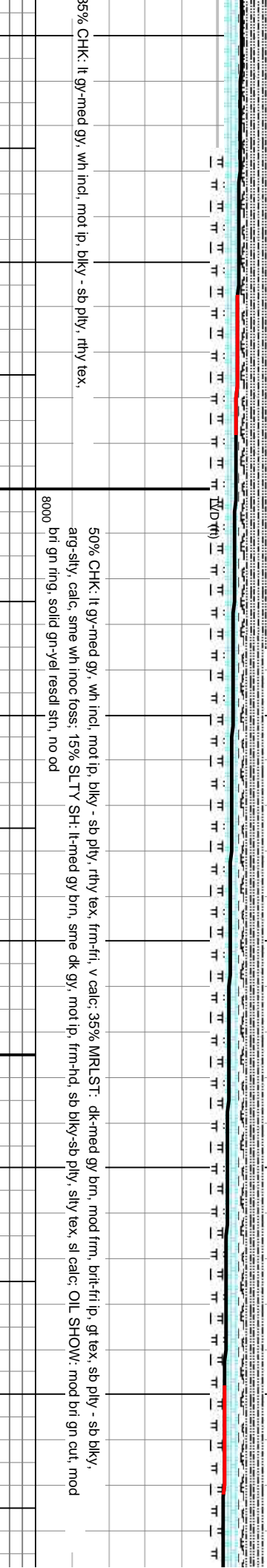
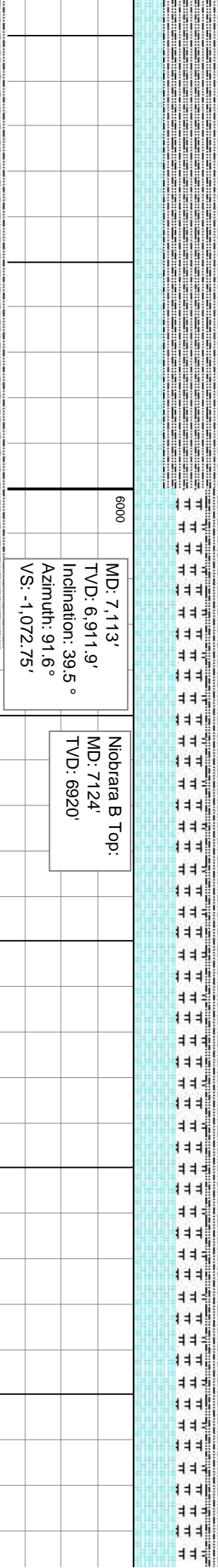
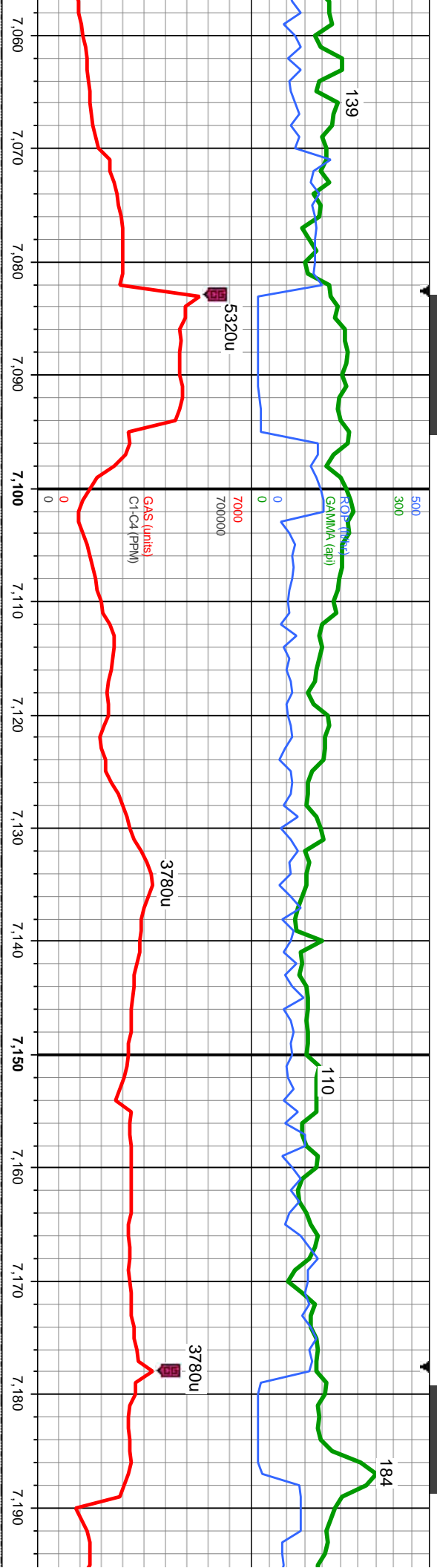
0

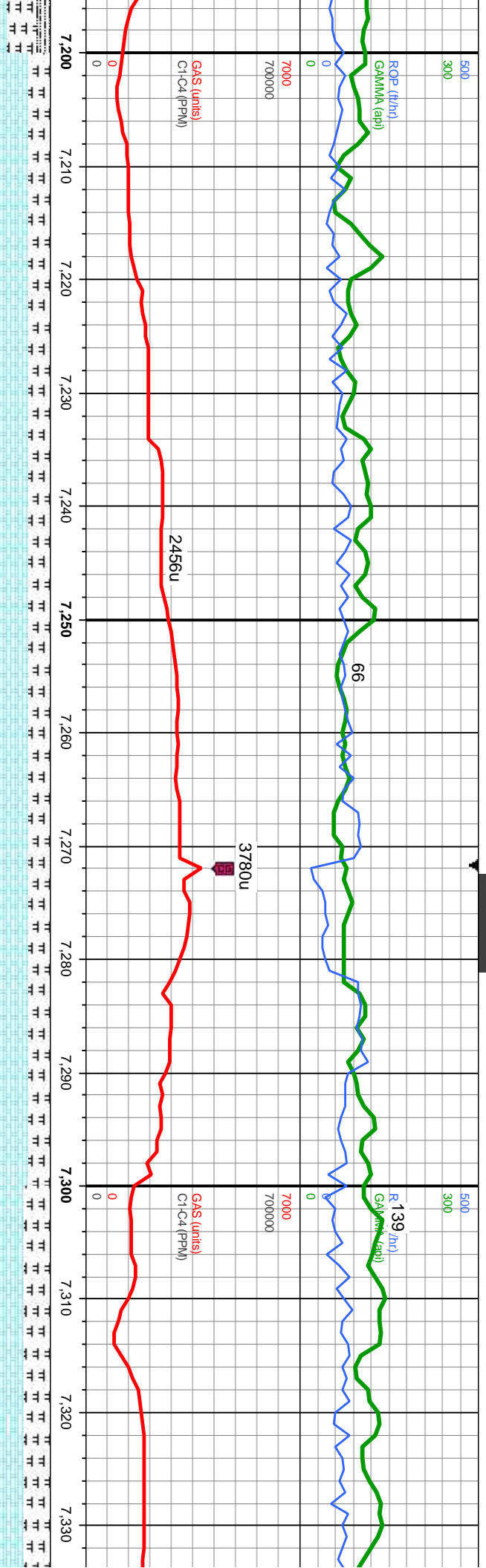
0

0

0

MD:
TVD
Incli
Azim
VS:





MD: 7,207'
TVD: 6,978.21'
Inclination: 50.6°
Azimuth: 89°
VS: -1,006.34'

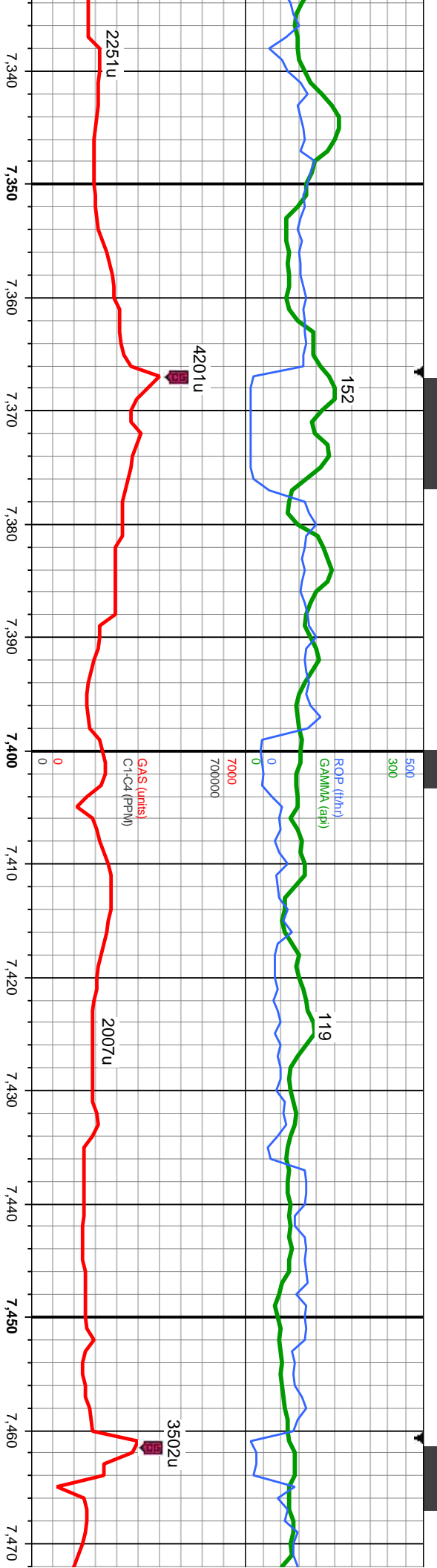
Niobrara C Top:
MD: 7207'
TVD: 6978'

MD: 7,302'
TVD: 7,030.84'
Inclination: 62°
Azimuth: 88.8°
VS: -927.46'

75% CHK: mot lt-med gy, sb blk-y-sb ply, frm-occ brt, rthy tex, sme bent, mtk, v calc; 25% MRLST: dk-med gy brn, mod frm, brt-fr ip, gt tex, sb ply - sb blk-y, arg-sily, calc, abnt wh inoc foss; OIL SHOW: mod brt, lt bl, smtg mky cut, bri wh-lt bl solid ring, sl gn resd ring

70% CHK: mot lt-med gy, sb blk-y-sb ply, frm blk-y, arg-sily, calc, tr wh inoc foss; OIL SHOW



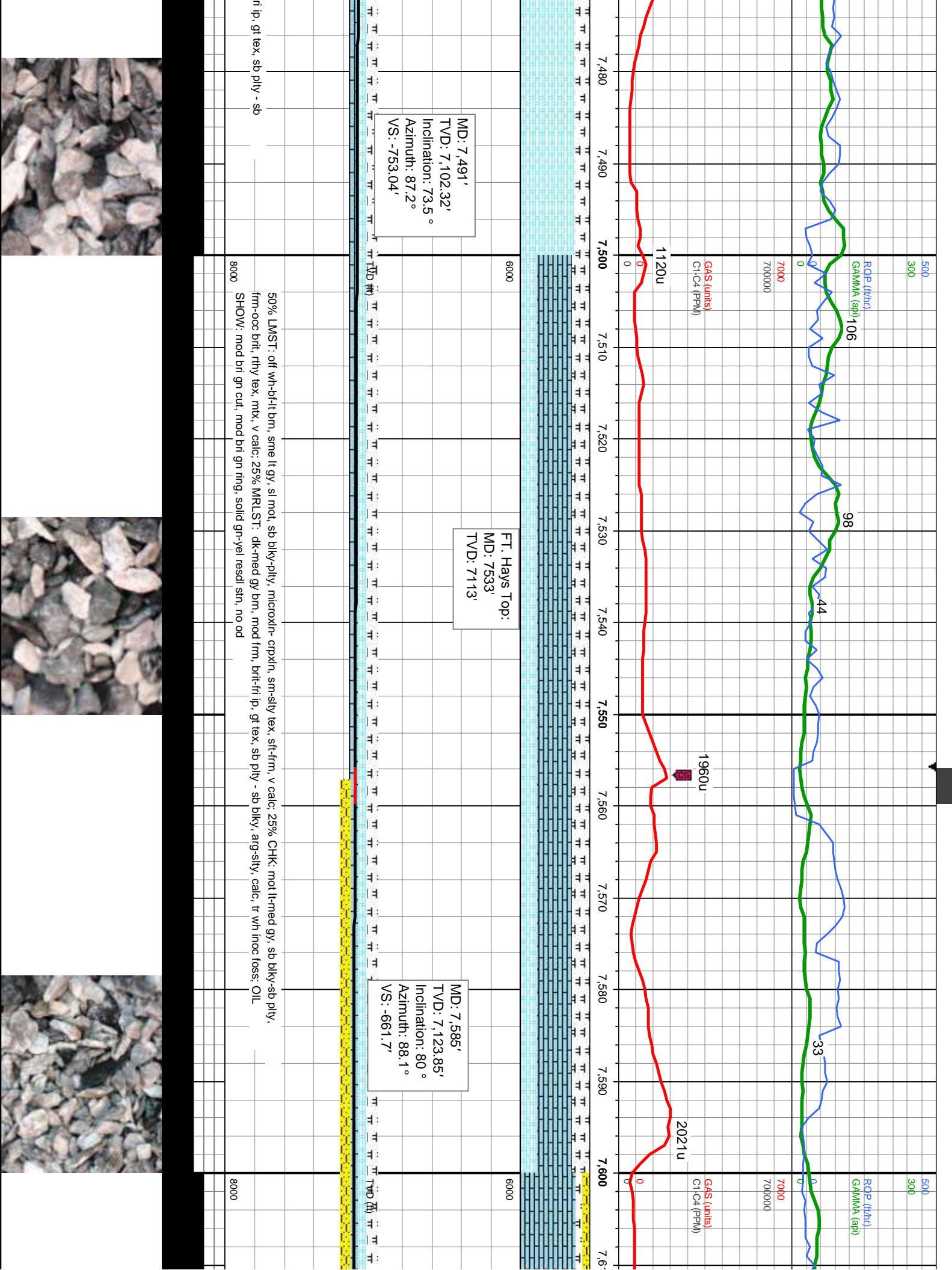


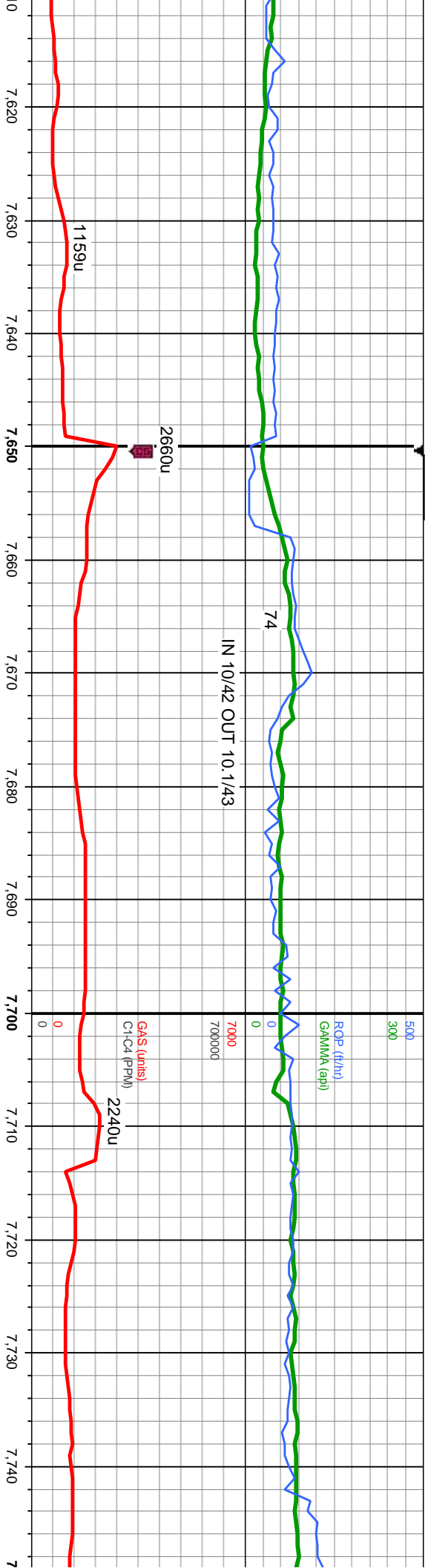
MD: 7.396'
TVD: 7,070.77'
Inclination: 67.7°
Azimuth: 87.4°
VS: -842.48'

o-occ brlt, rthy tex, mtx, v calc: 30% MRLST: dk-med gy brn, mod frm, brit-fri i.p, gt tex, sb plty - sb
W: mod brl, lt bl, string mlky cut, brl wh-lt bl solid ring, sl gn resdl ring

80% CHK: mot lt-med gy, sb blkly-sb plty, frm-occ brlt, rthy tex, mtx, v calc: 20% MRLST: dk-med gy brn, mod frm, brit-fri i.p, gt tex, sb plty - sb
blkly, arg-slty, calc, tr wh inoc foss: OIL SHOW: mod brl, lt bl, string mlky cut, brl wh-lt bl solid ring, sl gn resdl ring







Codeell Top:
MD: 7657'
TVD: 7133'

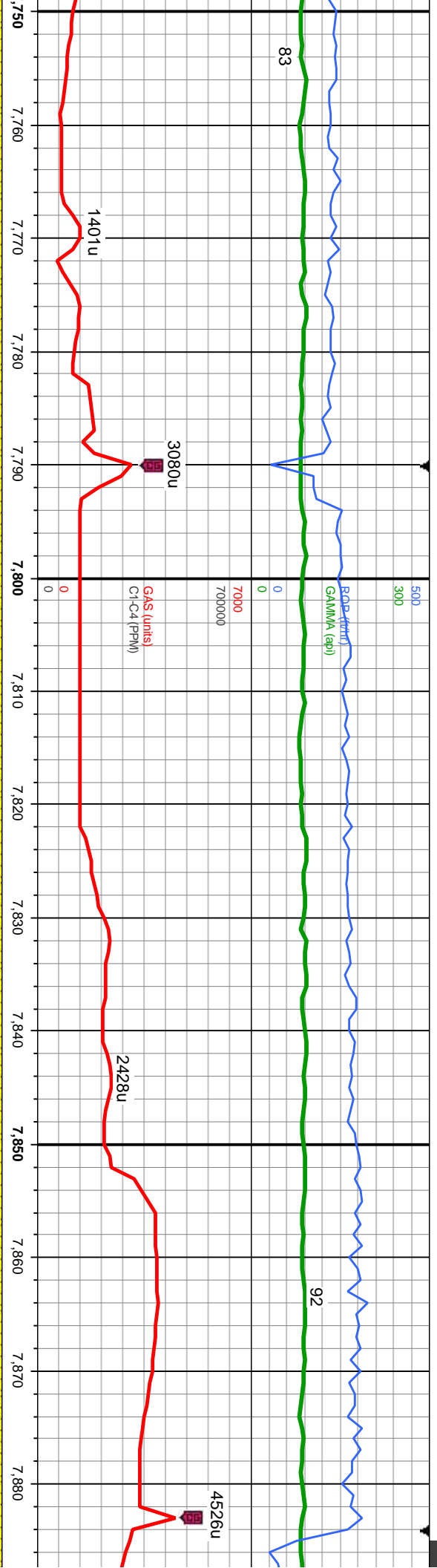
MD: 7,671'
TVD: 7,133.73'
Inclination: 86.8 °
Azimuth: 89.2 °
VS: -576.36'

TOOH for intermediate casing on
5/25/14 @ 21:00 HRS MST
Repaired tracking motor on top drive
RESUME DRILLING @ 11:48 HRS MST ON 05/29/14

80% LMST: off wh-b-ft brn, sme lt gy, sl mot, sb blk-y-ply, microxh- cpxh, sm-sly tex, sft-frm, v calc; 10%
MR LST: dk-med gy, mod frm, brit-frt ip, gt tex, sb ply - sb blk-y, arg-sly, calc; 10% SHY SS: dk gy-dk brn, c gr,
occ f gr, sb ang-sb md, p-mod srt, fri brit, mod-gd cons, sl calc; OIL SHOW: mod bri, lt bl, string milky cut, bri wh-it
sl solid ring, sl gn ressl ring

80% LMST: off wh-b-ft brn, sme lt gy, sl mot, sb blk-y-ply, microxh- cpxh, sm-sly t
80% p-mod srt, fri brit, mod-gd cons, sl calc; OIL SHOW: mod bri, lt bl, string milky cut, bri



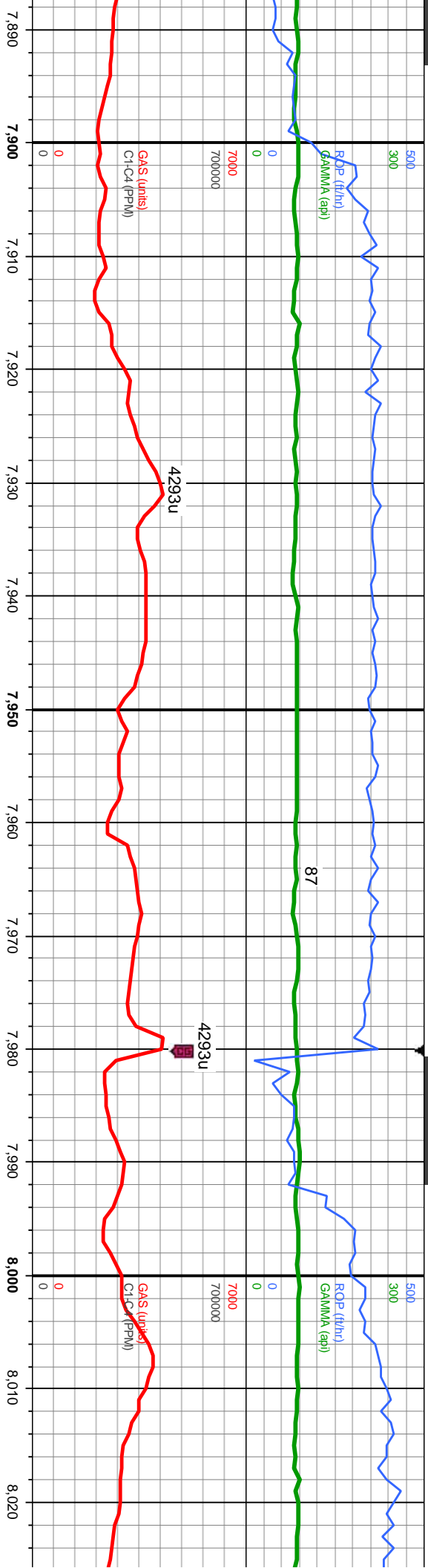


MD: 7,818'
TVD: 7,138.99'
Inclination: 89.1°
Azimuth: 87.6°
VS: -429.55'

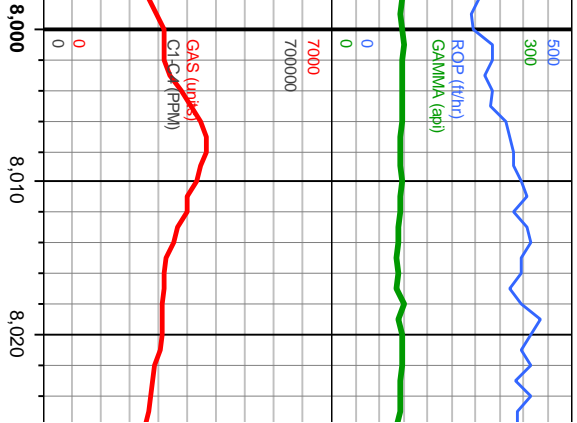
ex, sft-firm, v calc, 20% SHY SS: dk gy-dk brn, c gr, occ f gr, sb ang-sb md, wh-lt bl solid ring, sl gn resd ring

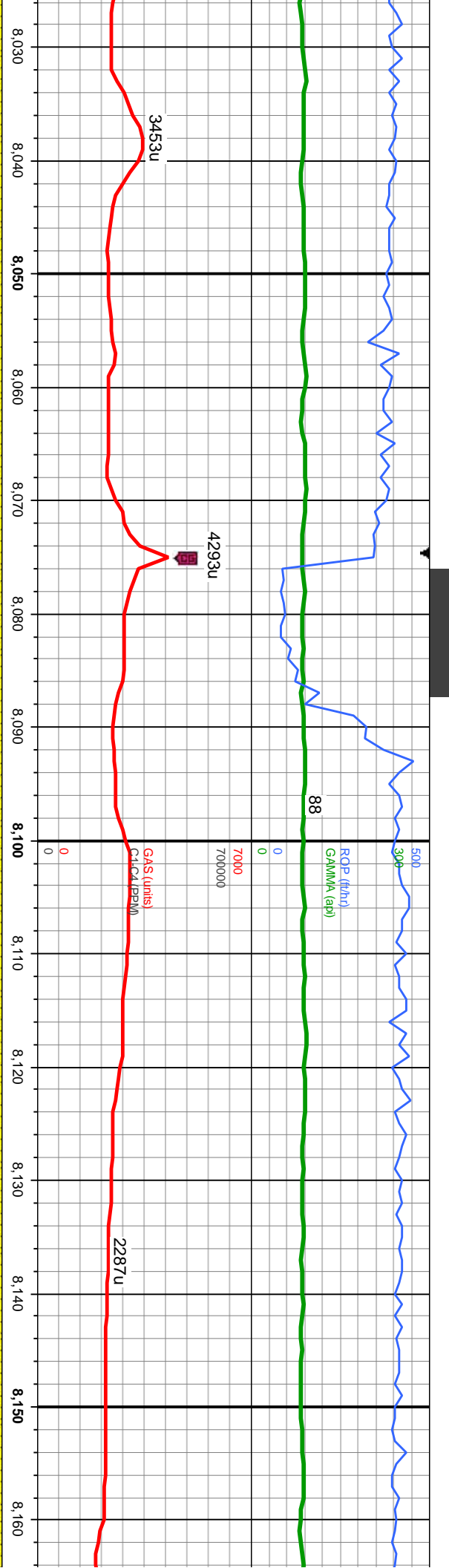
90% SHY SS: brn - gy brn, dk gy, trnsi - clr gr, vf - f gr, sb md - sb ang, mod - v hd, brit, w srt, 10% LS-offwht - crm, lt gy, hd, brit, plty - sb plty, wxy te calc, tr glauc, tr pyr, OIL SHOW: mod bri, lt bl, stmg mky cut, bri wh-lt bl solid ring, sl gn resd ring





-100% SHY SS: It - meo brn, gy brn, wh ip, tmsl - clr gr, v-f - l-c gr, sb rrd - ang, hd, brit - fri ip, p srt, p - mod cons, p - mod cmt, sl calc, occ pyr,
 occ glar: OIL SHOW: bri It bl-wh milky smng cut, bri wh thk mng, solid bri bl/reds sm, no od

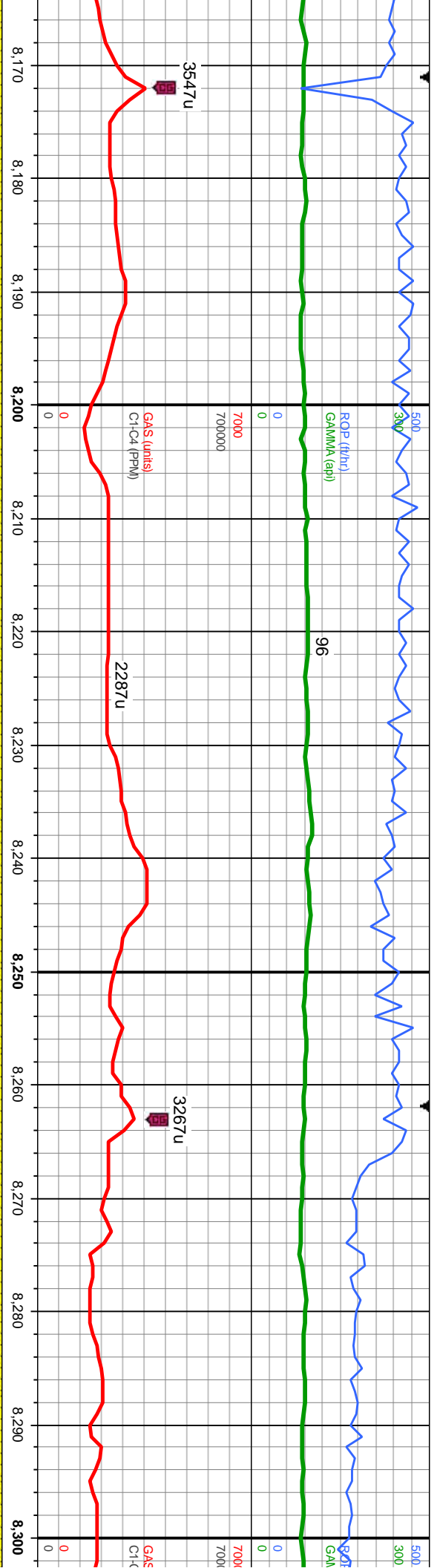




MD: 8,102'
TVD: 7,141.3'
Inclination: 90.1 °
Azimuth: 89.9 °
VS: -145.68'

100% SHY SS: lt - med brn, gy brn, wh ip, trnsl - clr gr, vf - l c gr, sb md - ang, hd, brlt - frt ip, p srt, p - mod cons
80%~ OCC glau: OIL SHOW: mod brt, lt bl, string mlky cut, brt wh-lt bl solid ring, sl gn resd ring





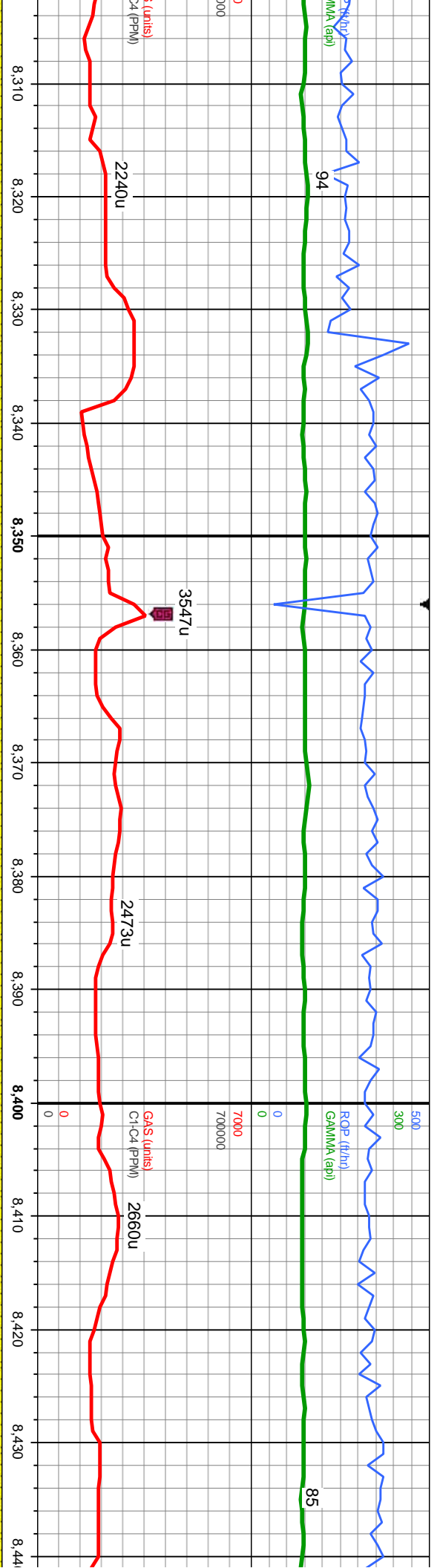
MD: 8,196'
TVD: 7,141.54'
Inclination: 89.6 °
Azimuth: 90.2 °
VS: -51.68'

MD: 8,289'
TVD: 7,141.62'
Inclination: 90.3 °
Azimuth: 91.1 °
VS: 41.32'

p - mod cmt, sl calc, occ pyr,

100% SHY SS: lt - med brn, gy brn, wh ip, tmsl - cfr gr, vt - l c gr, sb md - ang, hd, brit - fri ip, p str, p - mod cons, p - mod cmt, sl calc, occ pyr,
occ glau: OIL SHOW: mod brl, lt bl, stmg mlky cut, bri wh-lt bl solid ring, sl gn resdl ring



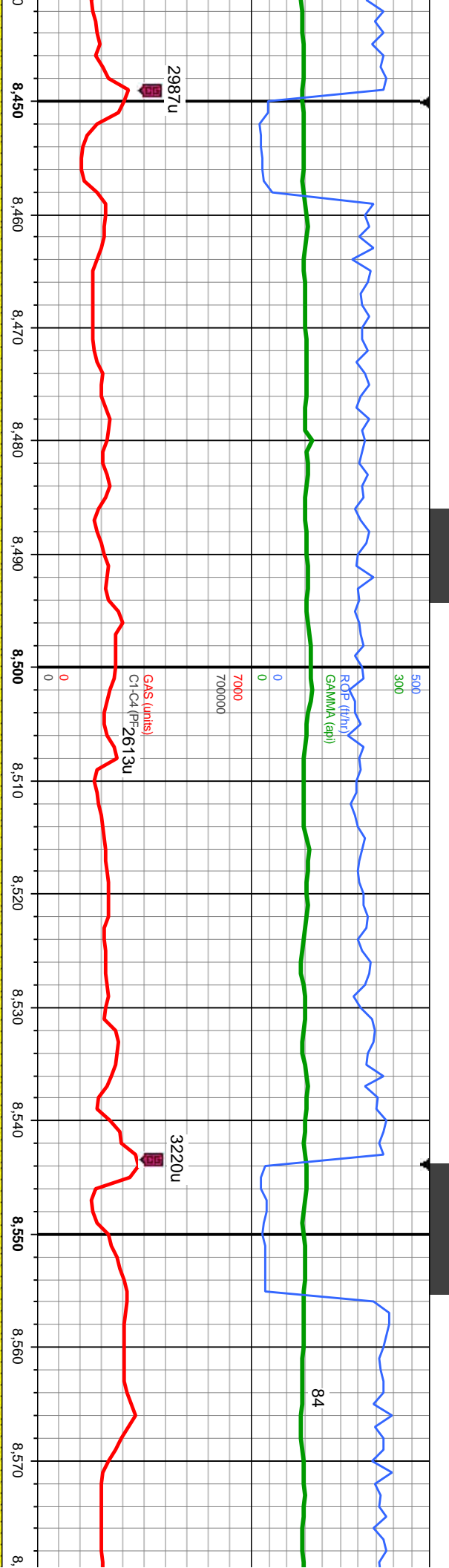


MD: 8,383'
TVD: 7,140.8'
Inclination: 90.7°
Azimuth: 91.7°
VS: 135.3'

100% SHY SS: lt - med brn, gy brn, wh ip, trnsi - cl gr, vf - l c gr, sb md - ang, hd, brit - fri ip, p srt, p - mod cons, p - mod cnt, sl calc, occ pyr, occ glau; OIL SHOW: mod br, lt bl, string milky cut, bri wh-lt bl solid ring, sl gr resd, ring

100% SHY SS: lt - med brn, gy brn, wh ip, trnsi - cl gr, vf - l c gr, sb md - ang, hd, brit - fri ip, p srt, p - mod cons, p - mod cnt, sl calc, occ pyr, occ glau; OIL SHOW: mod br, lt bl, string milky cut, bri wh-lt bl solid ring, sl gr resd, ring





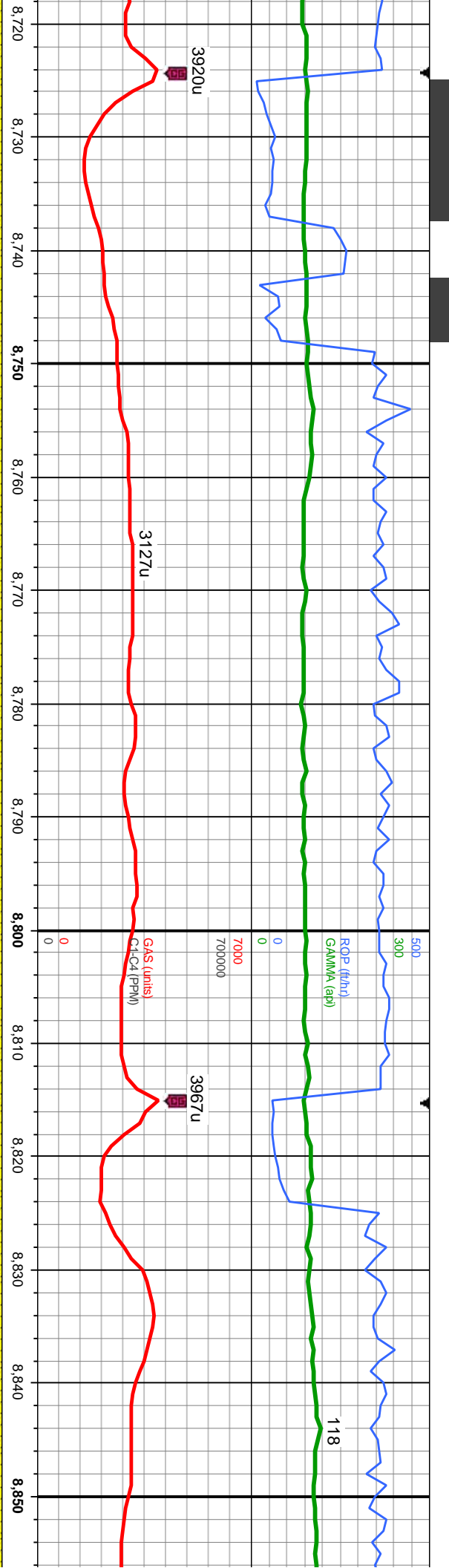
MD: 8,477'
TVD: 7,139.9'
Inclination: 90.4 °
Azimuth: 92.1 °
VS: 229.26'

MD: 8,572'
TVD: 7,139.4'
Inclination: 90.2 °
Azimuth: 92.8 °
VS: 324.2'

gr, sb md - ang, hd, brit - fri ip, p srt, p - mod cons, p - mod cnt, sl calc, occ pyr, solid ring, sl gn resd ring

100% SHY SS: lt - med brn, gy brn, wh ip, tnsi - clr gr, vf - l c gr, sb md - ang, hd, brit - fri ip, p srt, p - mod cons, p - mod cnt, s occ glau; OIL SHOW: mod bri, lt bl, sting mlky cut, bri wh-lt bl solid ring, sl gn resd ring





MD: 8,761'
TVD: 7,140.88'
Inclination: 89 °
Azimuth: 93.2 °
VS: 513.01'

MD: 8,856'
TVD: 7,141'
Inclination: 89 °
Azimuth: 93.2 °
VS: 607.9'

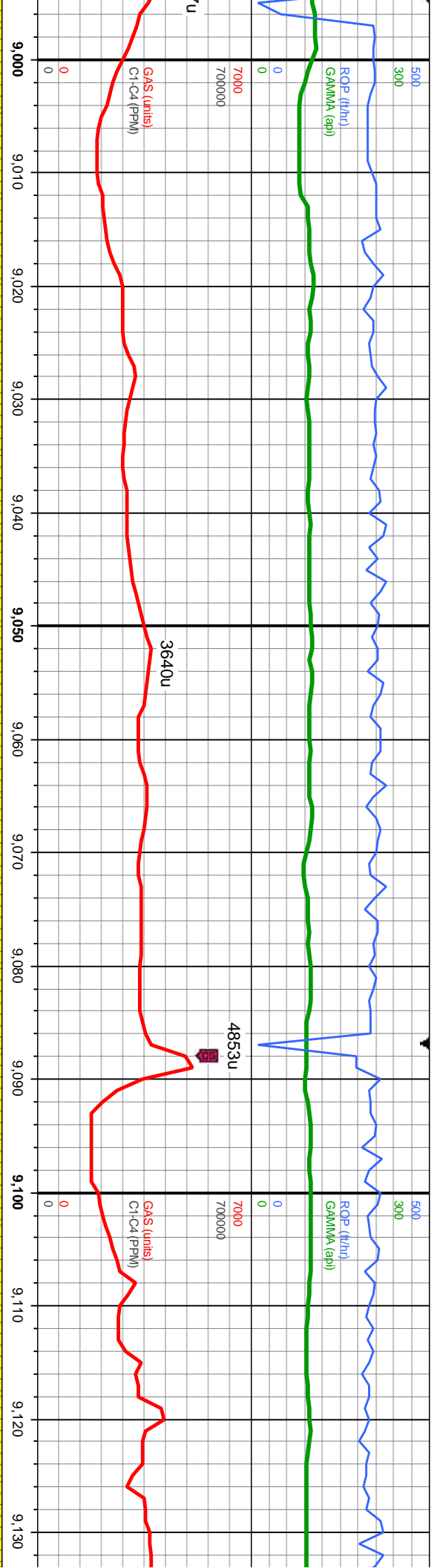
8,720 8,730 8,740 8,750 8,760 8,770 8,780 8,790 8,800 8,810 8,820 8,830 8,840 8,850

6000

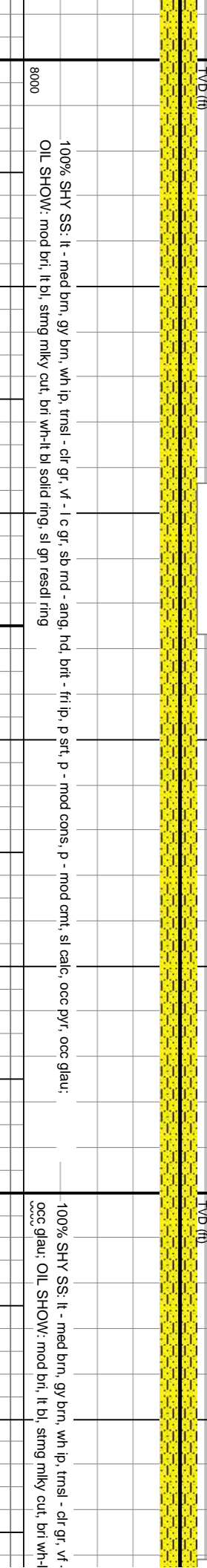
8000

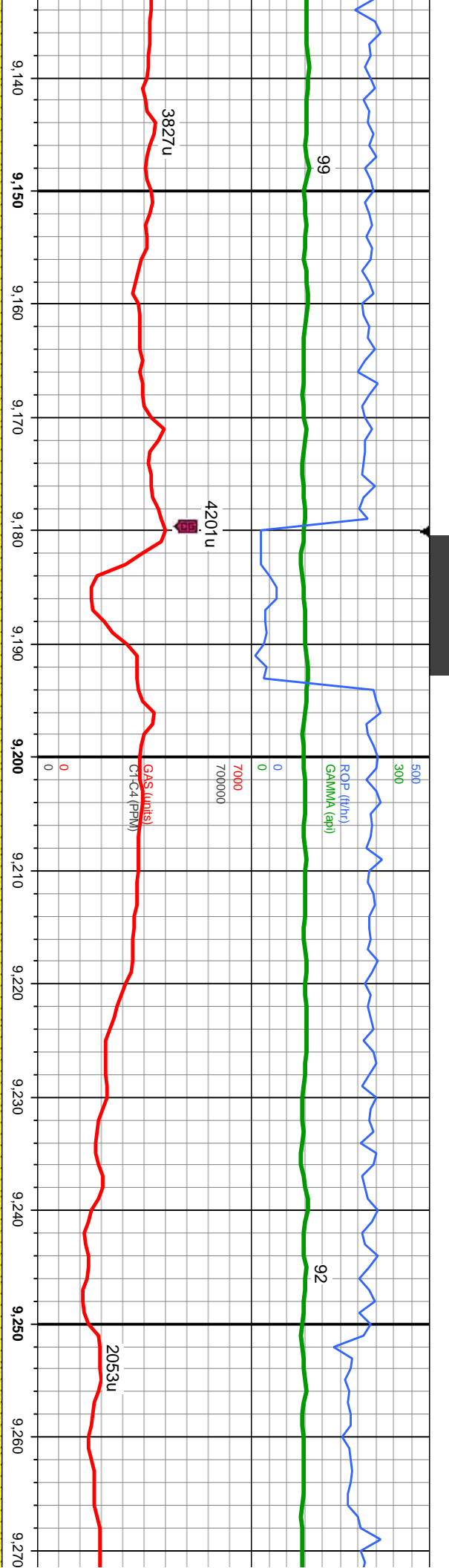
100% SHY SS: lt - med brn, gy brn, wh ip, trnsf - clr gr, vf - lc gr, sb md - ang, hd, brit - fri ip, p srt, p - mod cons, p - mod cmt, sl calc, occ pyr, occ glau; OIL SHOW: mod bri, lt bl, string milky cut, bri wh-lt bl solid ring, sl gn resd ring





MD: 9,044'
TVD: 7,142.62'
Inclination: 90.3 °
Azimuth: 91.9 °
VS: 795.8'





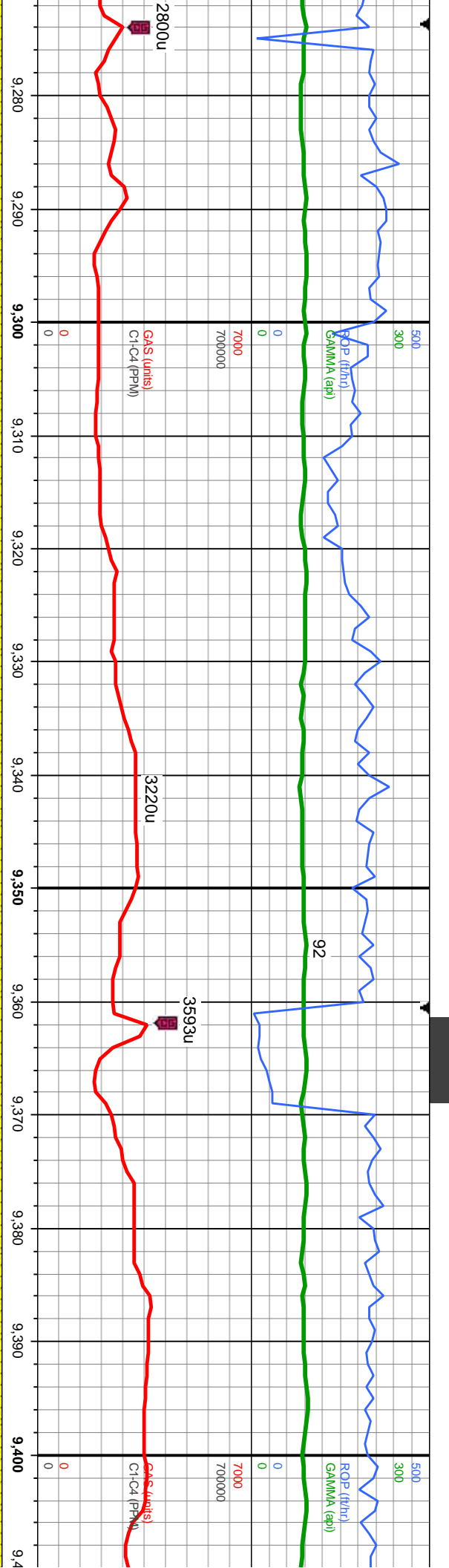
MD: 9,139'
TVD: 7,141.38'
Inclination: 91.2°
Azimuth: 91.5°
VS: 890.77'

MD: 9,233'
TVD: 7,139.9'
Inclination: 90.6°
Azimuth: 91.3°
VS: 984.74'

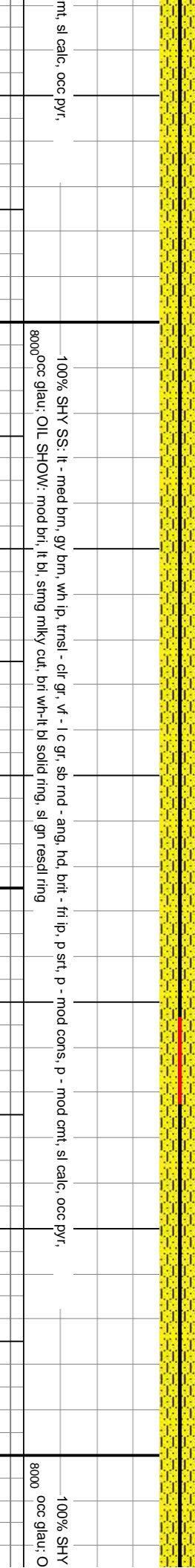
l c gr, sb md - ang, hd, brit - fri ip, p str, p - mod cons, p - mod cmt, sl calc, occ pyr,
bl solid ring, sl gn resd ring

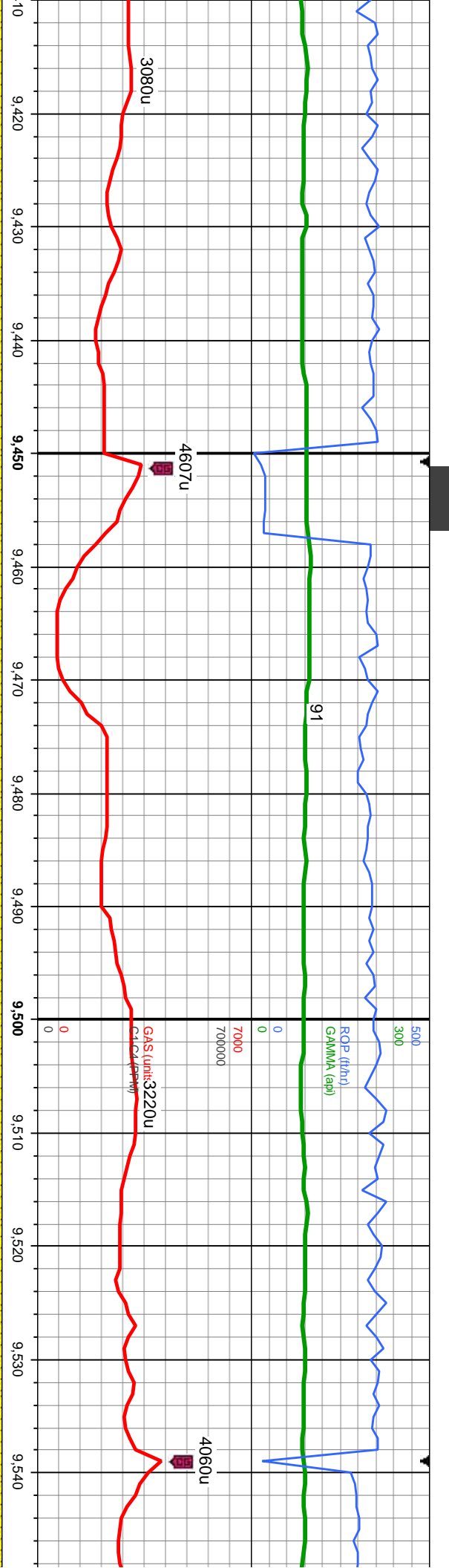
100% SHY SS. lt - med brn, gy brn, wh ip, trns - clt gr, v - l c gr, sb md - ang, hd, brit - fri ip, p str, p - mod cons, p - mod c
occ glau; OIL SHOW: mod brf, lt bl, smg milky cut, bri wh lt bl solid ring, sl gn resd ring





MD: 9,328'
TVD: 7,139.32'
Inclination: 90.1°
Azimuth: 91.9°
VS: 1,079.71'

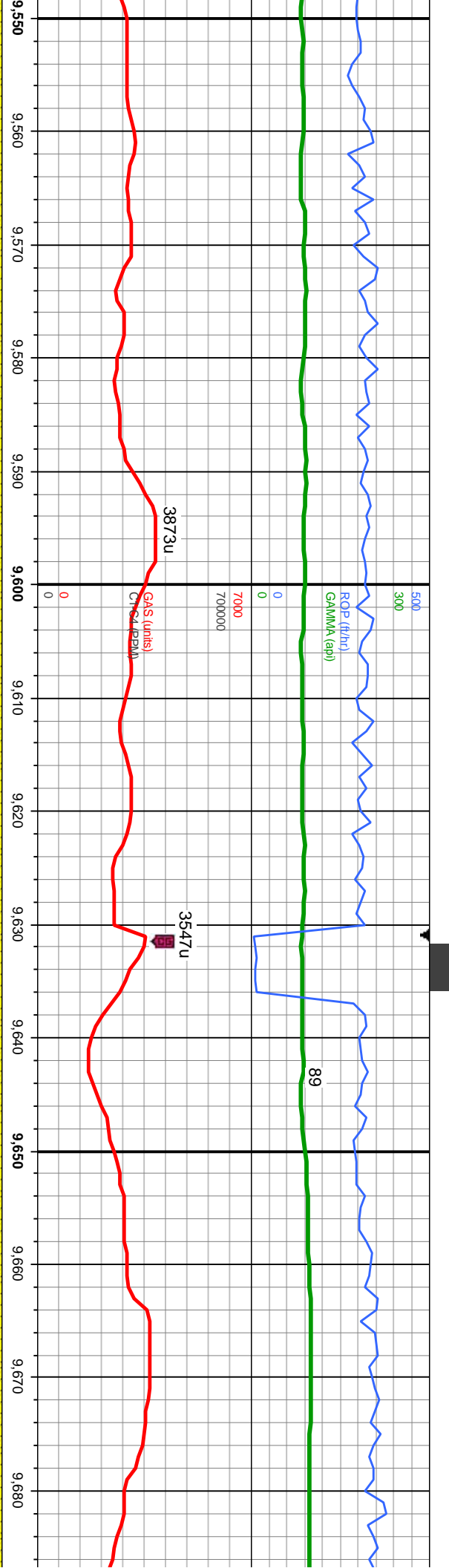




MD: 9,422'
TVD: 7,138.58'
Inclination: 90.8 °
Azimuth: 90.9 °
VS: 1,173.69'

SS: lt - med brn, gy brn, wh lp, trnsi - clt gr, vt - l c gr, sb md - ang, hd, brit - fir ip, p srt, p - mod cons, p - mod cntl, sl calc, occ pyr,
IL SHOW: mod brl, lt bl, stmg mlky cut, brn wh-lt bl solid ring, sl gn resdl ring

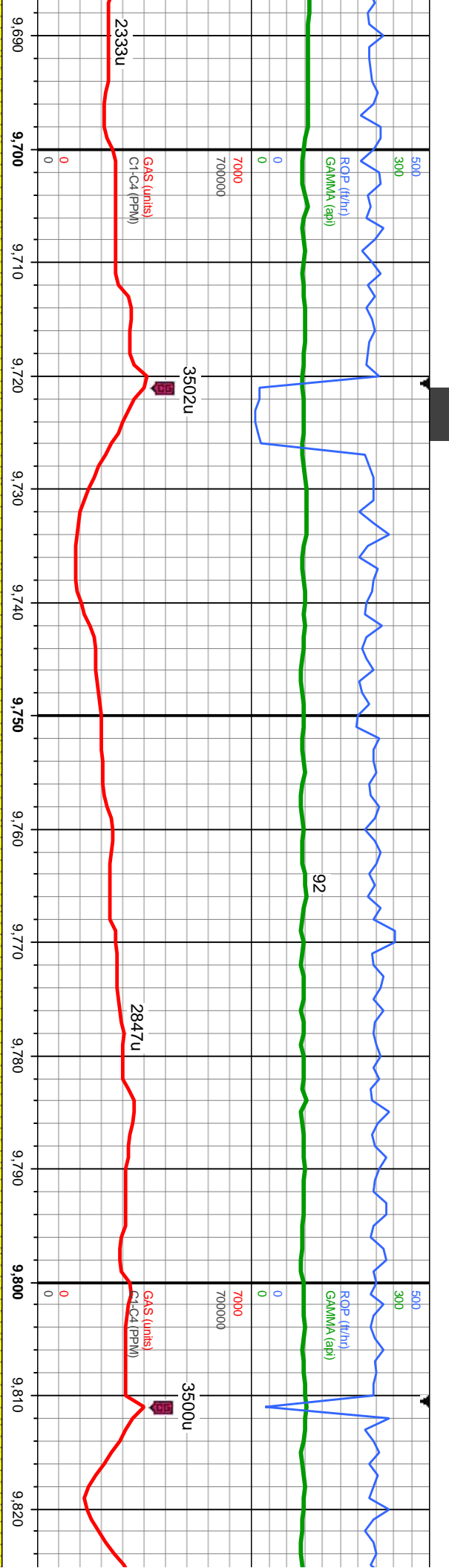




MD: 9,611'
TVD: 7,137.59'
Inclination: 89.8°
Azimuth: 90.6°
VS: 1,362.69'

d, bit - fri ip, p srt, p - mod cons, p - mod cnt, sl calc, occ pyr, ssd ring	
100% SHY SS: lt - med brn, gy brn, wh ip, trnsi - clr gr, vt - l c gr, sb md - ang, hd, bit - fri ip, p srt, p - mod cons, p - mod cnt, sl calc, occ pyr, occ glau: OIL SHOW: mod bri, lt bl, stmg mlky cut, bri wh-lt bl solid ring, sl gn resd ring	





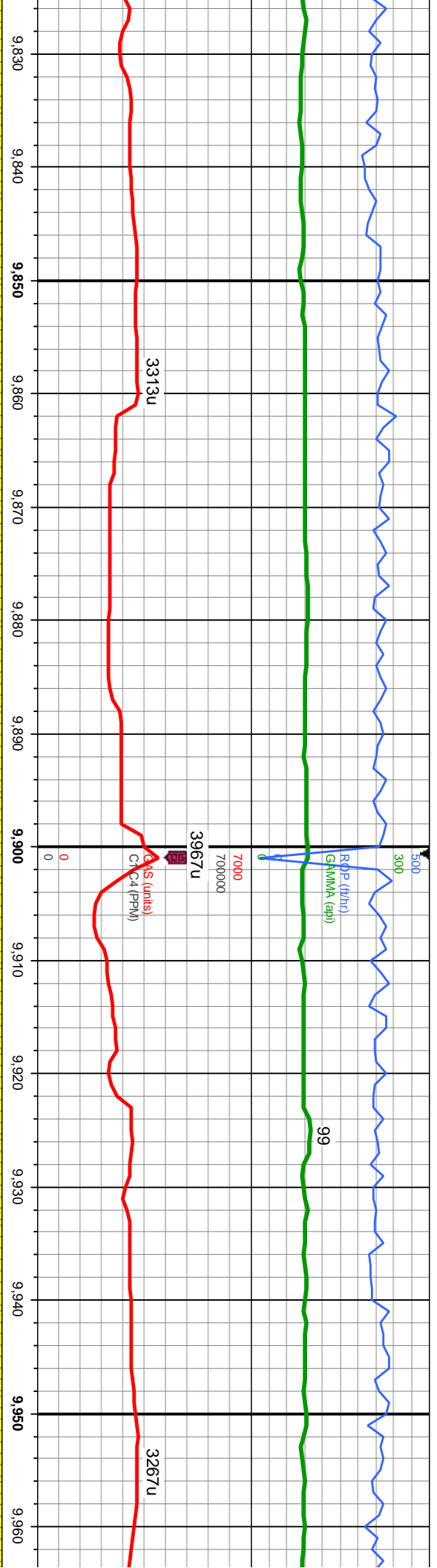
MD: 9,707'
TVD: 7,137.26'
Inclination: 90.6°
Azimuth: 90.5°
VS: 1,458.68'

MD: 9,799'
TVD: 7,136.61'
Inclination: 90.2°
Azimuth: 90.5°
VS: 1,550.68'

100% SHY SS: lt - med brn, gy brn, wh ip, trnsi - clr gr, vf - l c gr, sb rnd - ang, hd, brit - fri ip, p sft, p - mod cons, p - mod cnt, sl calc, occ pyr, occ glau; OIL SHOW: mod br, lt bl, string milky cut, bri wh-lt bl solid ring, sl gn rescl ring

100% SHY SS: lt - med brn, gy l
occ glau; OIL SHOW: mod br, lt

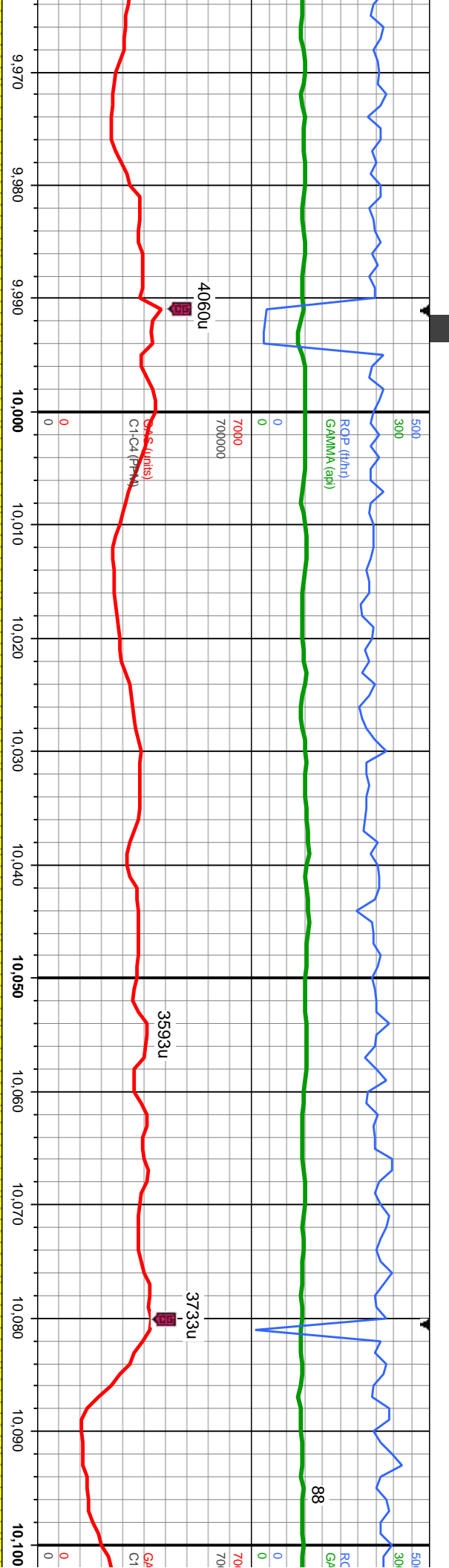




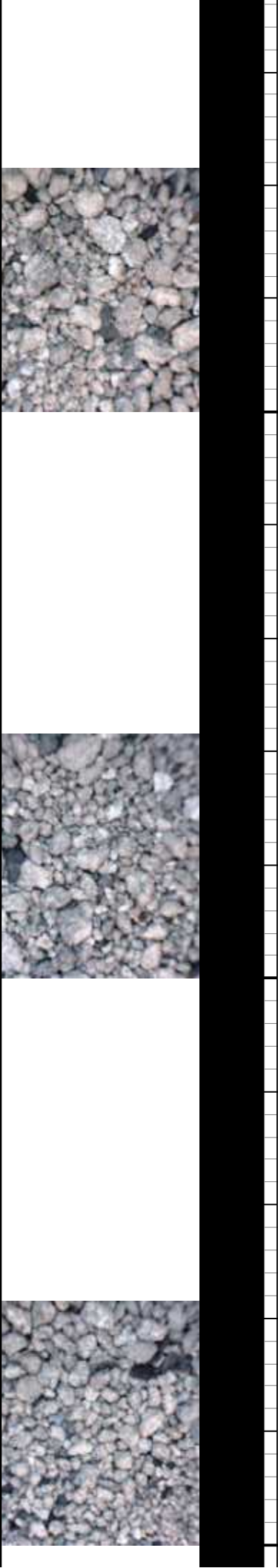
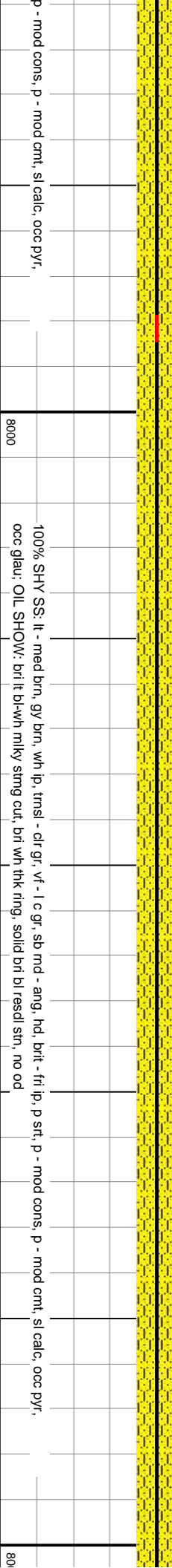
MD: 9,894'
TVD: 7,135.7'
Inclination: 90.9°
Azimuth: 89.8°
VS: 1,645.67'

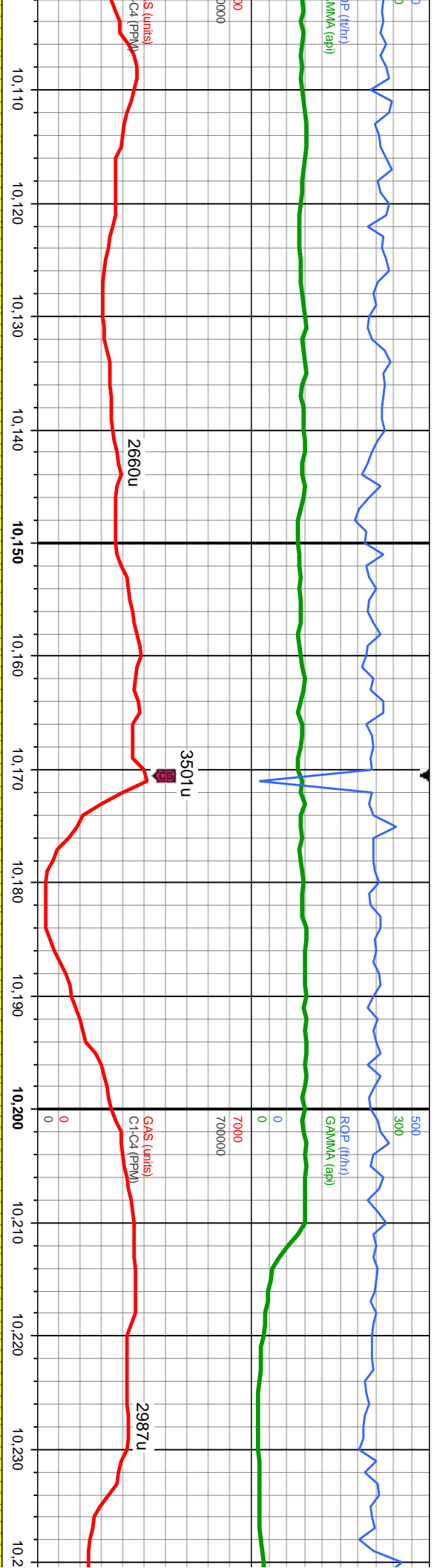
TVD (ft)	
6000	
8000	
on, wh ip, tmsl - clt gr, vf - l c gr, sb md - ang, hd, bit - fri ip, p srt, p - mod cons, p - mod cmt, sl calc, occ pyr, bl, sting mlky cut, bri wh-it bl solid ring, sl gn resdl ring	
100% SHY SS: lt - med brn, gy brn, wh ip, tmsl - clt gr, vf - l c gr, sb rnd - ang, hd, bit - fri ip, p srt, occ glau; OIL SHOW: bri lt br-wh mlky sting cut, bri wh thk ring, solid bri bl resdl stn, no od	





MD: 10,083'
TVD: 7,138.51'
Inclination: 87.4°
Azimuth: 88.2°
VS: 1,834.56'



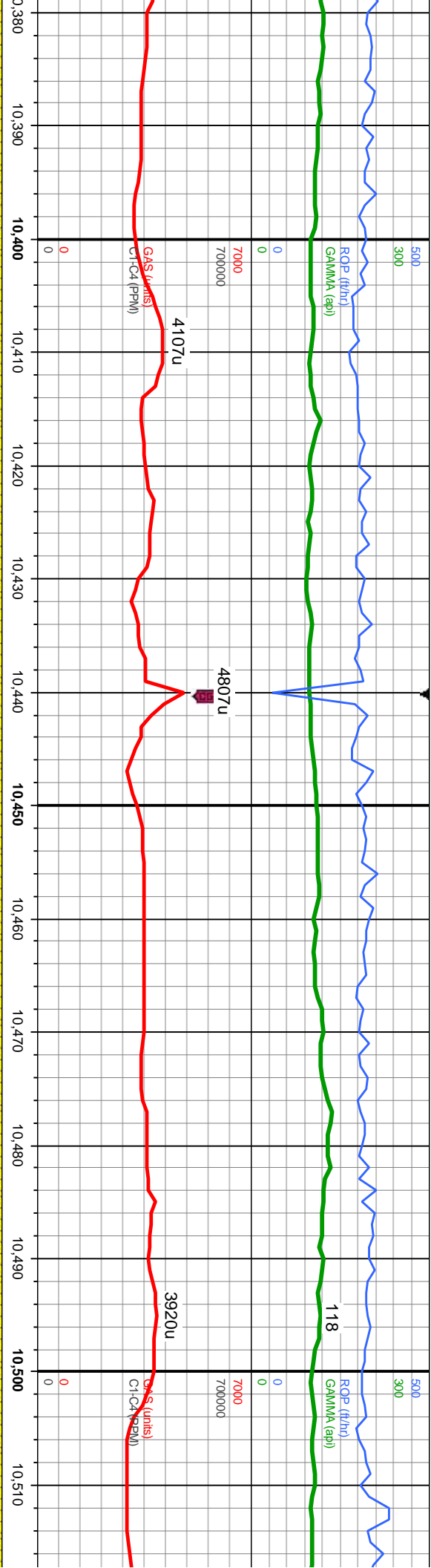


MD: 10,177'
TVD: 7,142.03'
Inclination: 88.3°
Azimuth: 88.7°
VS: 1,928.44'

100% SHY SS: lt - med brn, gy brn, wh ip, trns l - clr gr, vf - l c gr, sb md - ang, hd, brit - fri ip, p srt, p - mod cons, p - mod cmf, sl calc, occ pyr, occ glau; OIL SHOW: bri lt br-wh milky string cut, bri wh thk ring, solid bri bl resd sin, no od

80% LS: ofwt/lt - cfm, lt brn - lt gy, v frm - hd, brit, f wh ip, trns l - clr gr, vf - l c gr, sb md - ang, hd, brit - string milky cut, bri wh-lt bl solid ring, sl gn resd ring

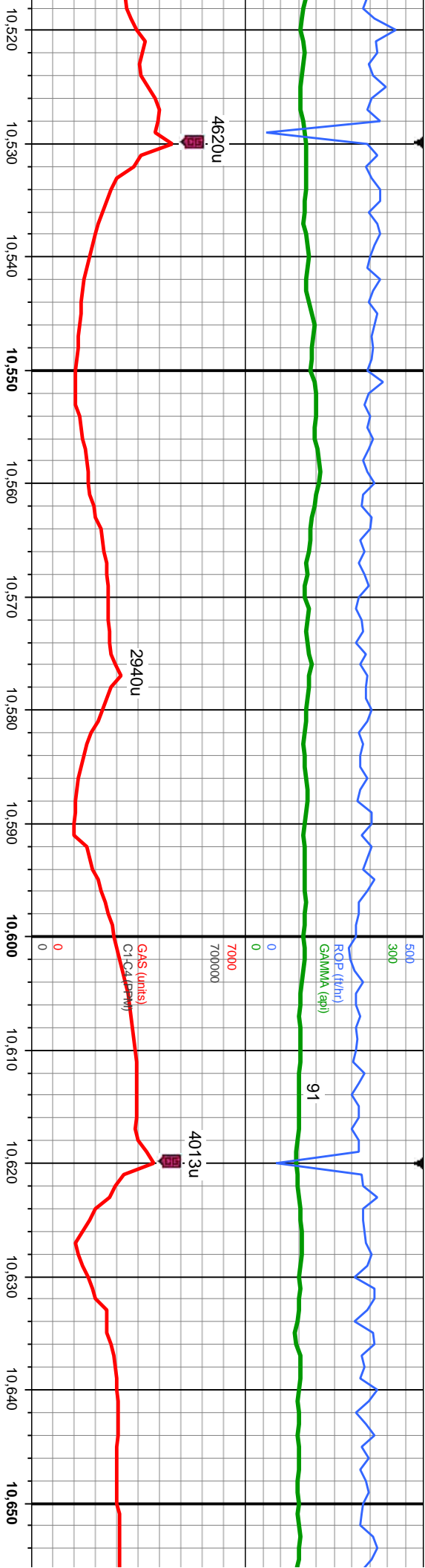




MD: 10,462'
TVD: 7,141.3'
Inclination: 91 °
Azimuth: 90.2 °
VS: 2,213.36'

OW: mod brn, gy brn, : lt - med brn, gy brn,	8000	100% SHY SS: lt - med brn, gy brn, wh ip, trnsf - clr gr, vf - l c gr, sb rnd - ang, hcd, brit - fit ip, p srt, p - mod cons, p - mod cnt, sl calc, occ pyr, occ glau; OIL SHOW: mod bri, lt bl, sting mlky cut, bri wh-lt bl solid ring, sl gn resd ring	8000	100% Sh occ glau
--	------	---	------	------------------





MD: 10,558'
TVD: 7,139.96'
Inclination: 90.6°
Azimuth: 90.4°
VS: 2,309.35'

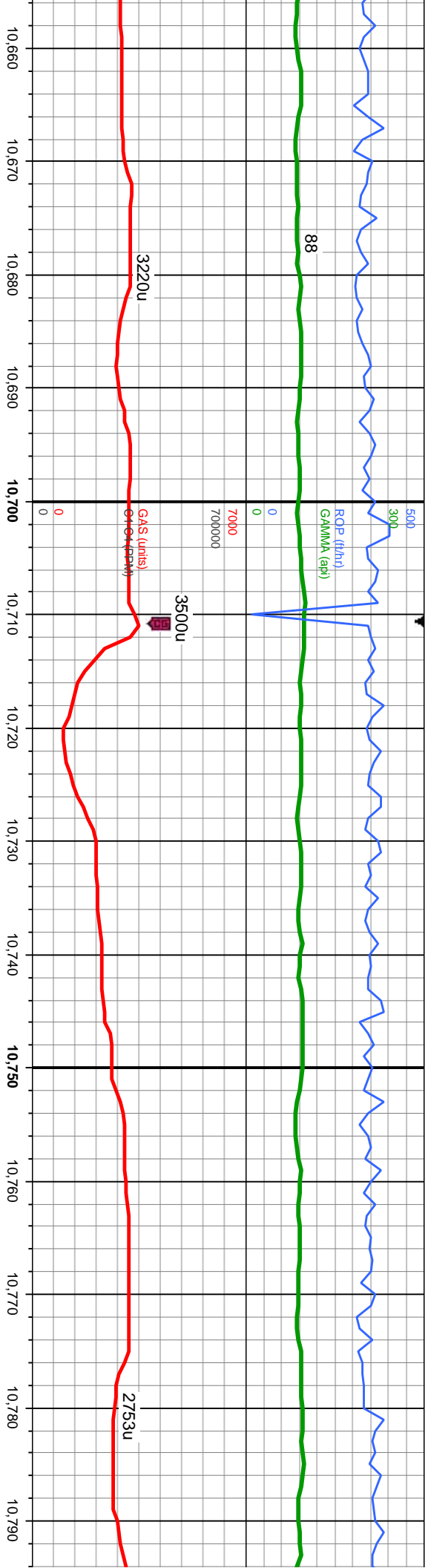
MD: 10,653'
TVD: 7,138.6'
Inclination: 90.4°
Azimuth: 90.4°
VS: 2,404.34'

IV SS: lt - med brn, gy brn, wh ip, trnsi - clr gr, vf - lc gr, sb rnd - ang, hd, brt - fri ip, p stf, p - mod cons, p - mod cnt, sl calc, occ pyr,
OIL SHOW: mod brl, lt bl, string milky cut, brl wh-lt bl solid ring, sl gn rescl ring

8000

100% SHY SS: lt - med brn, gy brn, wh ip, trnsi - clr gr, vf - lc gr, sb
occ glau



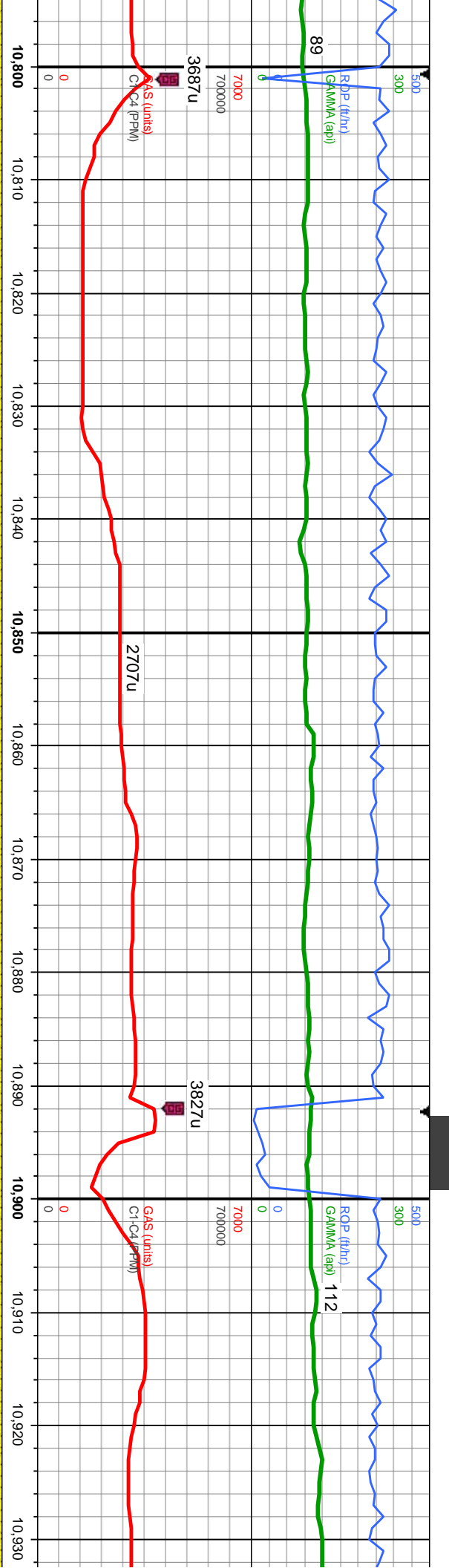


33' 1° 7° 1'

MD: 10,748'
TVD: 7,137.8'
Inclination: 90.0°
Azimuth: 90.3°
VS: 2,499.33'

mod - ang, hd, brit - fri ip, p srt, p - mod cons, p - mod cnt, sl calc, occ pyr,	8000	100% SHY SS: lt - med brn, gy brn, wh ip, trnsf - clt gr, vt - l c gr, sb rnd - ang, hd, brit - fri ip, p srt, p - mod cons, p - mod cnt, sl calc, occ pyr, occ glau; OIL SHOW: brt lt bl-wh mlky string cut, brt wh thk ring, solid brt bl resdi stn, no od
---	------	--





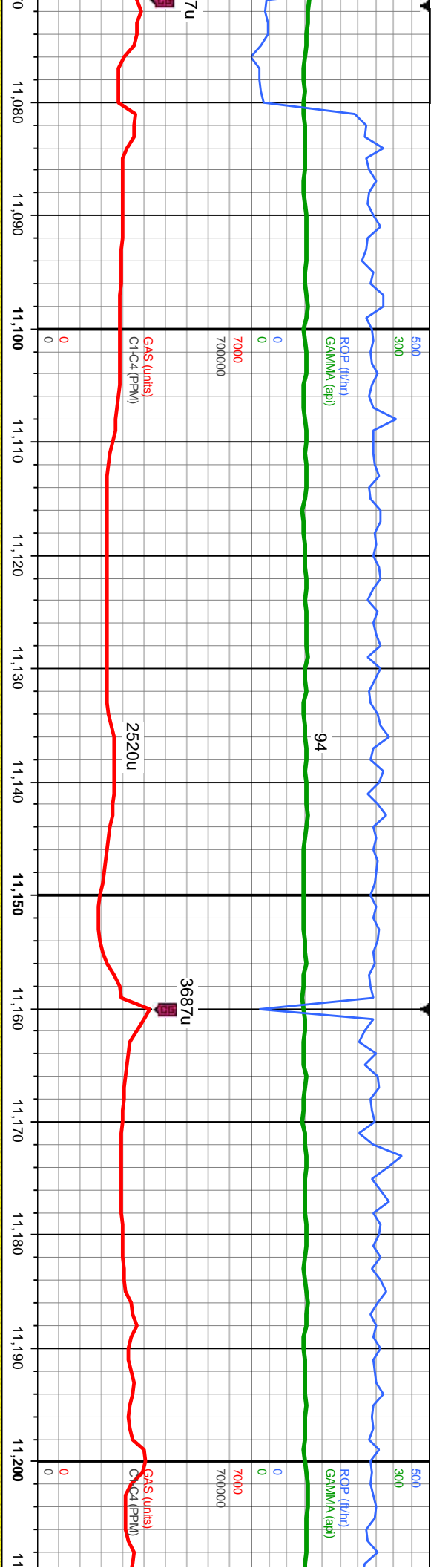
MD: 10,844'
TVD: 7,137.89'
Inclination: 89.9°
Azimuth: 90.6°
VS: 2,595.33'

ME
TV
Inc
Az
VS

100% SHY SS: lt - med brn, gy brn, wh ip, trnsf - clt gr, vt - l c gr, sb md - ang, hd, brit - fri ip, p str, p - mod cons, p - mod cmt, sl calc, occ pyr,
800c glau: OIL SHOW: bri lt bl-wh mlky string cut, bri wh thk ring, solid bri bl resd stn, no od

100% SHY SS: lt - med brn, gy brn, wh ip, trnsf - clt gr,
800c glau: OIL SHOW: mod bri, lt bl, string mlky cut, bri w

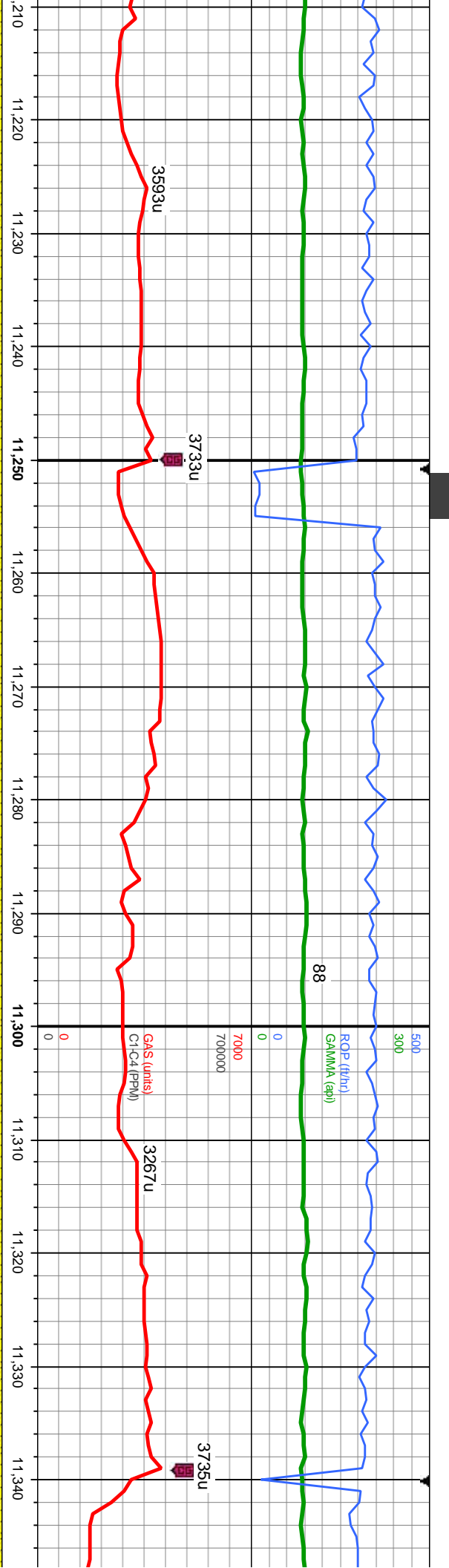




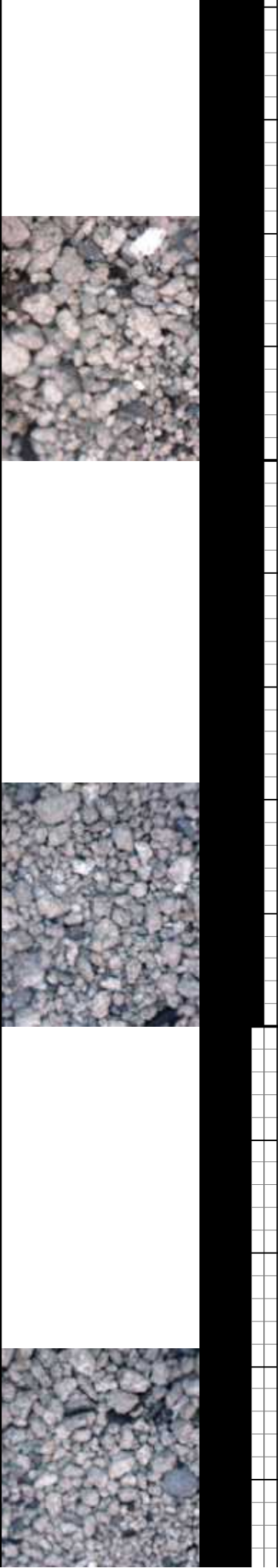
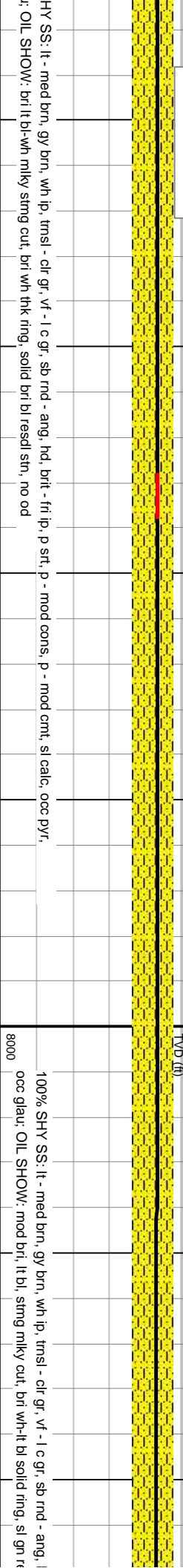
MD: 11,128'
TVD: 7,136.96'
Inclination: 90.4°
Azimuth: 90.2°
VS: 2,879.33'

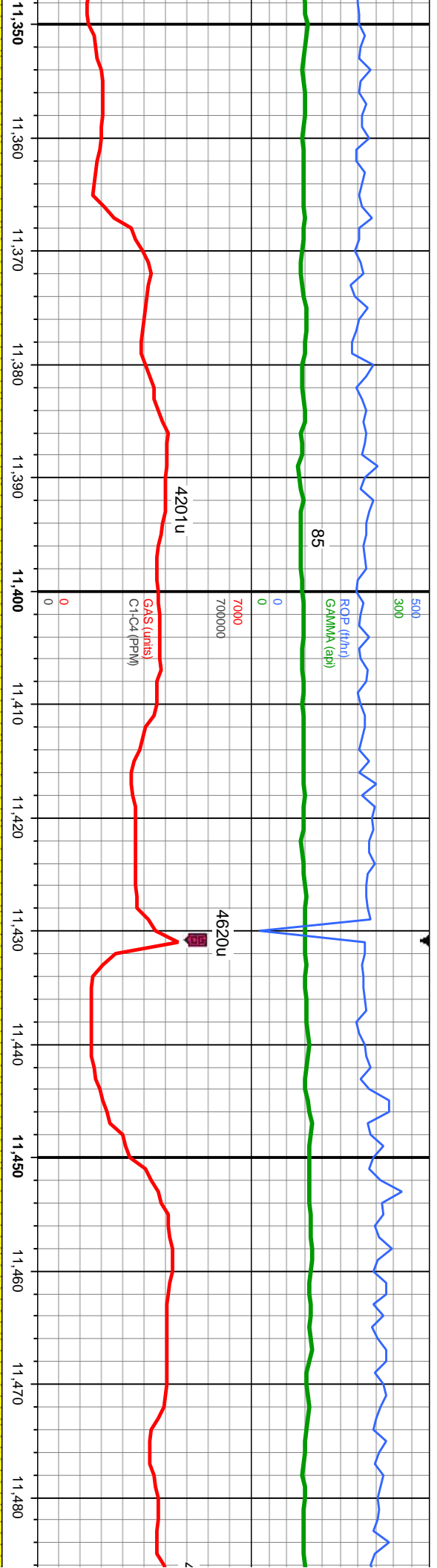
p - mod cntl, sl calc, occ pyr,		100% SHY SS: lt - med brn, gy brn, wh ip, trnsf - clr gr, vf - l c gr, sb rnd - ang, hd, brit - fit ip, p srt, p - mod cons, p - mod cntl, sl calc, occ pyr,	
8000		occ glau: OIL SHOW: mod bri, lt bl, sting mlky cut, bri wh-lt bl solid ring, sl gn resd ring	
TVD (ft)		TVD (ft)	



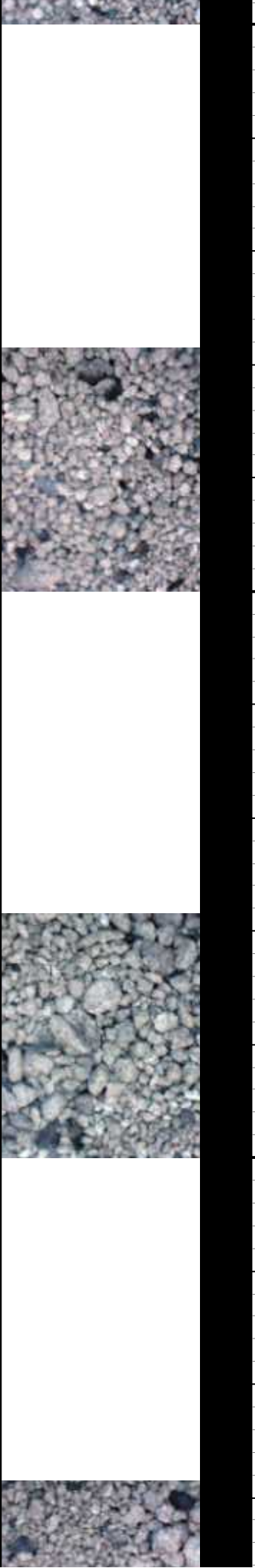
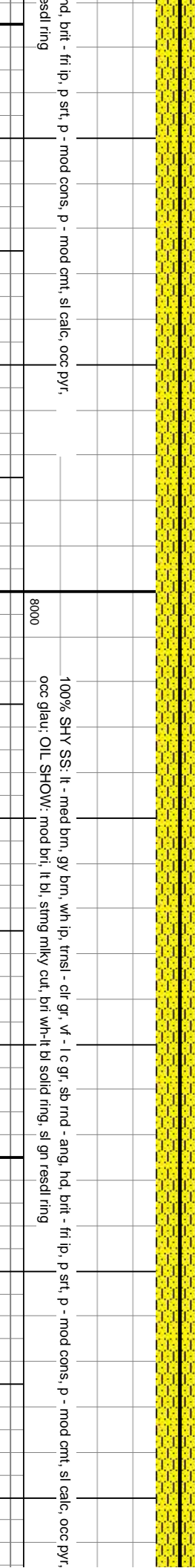


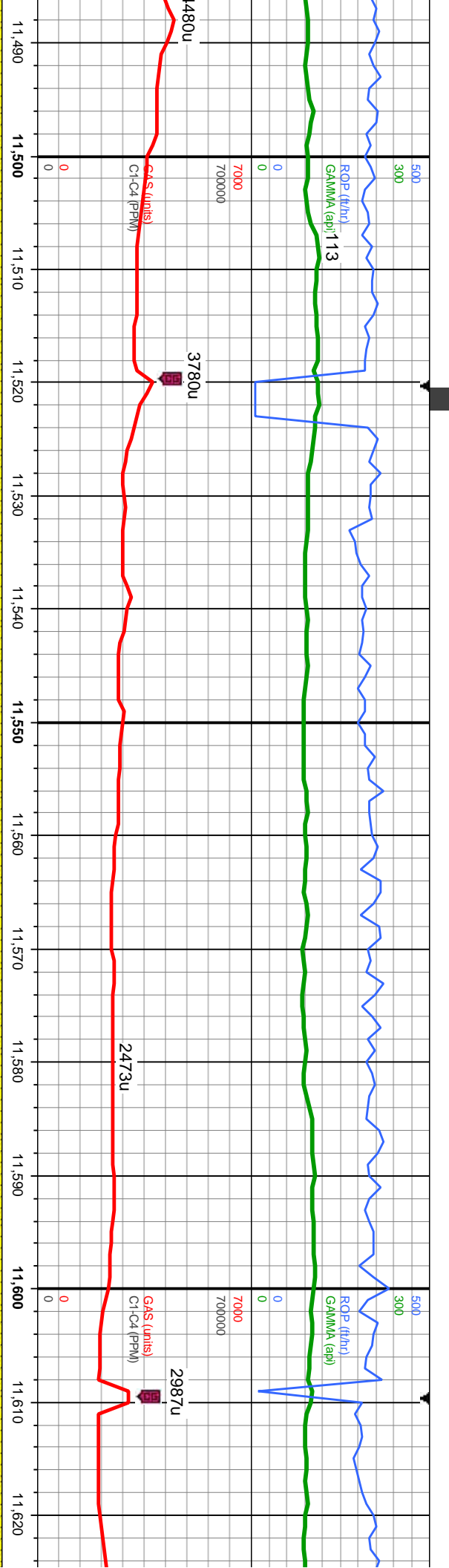
MD: 11,222'
TVD: 7,136.39'
Inclination: 90.3 °
Azimuth: 90.4 °
VS: 2,973.32'





MD: 11,411'
TVD: 7,137.05'
Inclination: 89.3 °
Azimuth: 90.1 °
VS: 3,162.32'





MD: 11,506'
TVD: 7,137.96'
Inclination: 89.6 °
Azimuth: 90.2 °
VS: 3,257.31'

MD: 11,600'
TVD: 7,138.37'
Inclination: 89.9 °
Azimuth: 90.8 °
VS: 3,351.31'

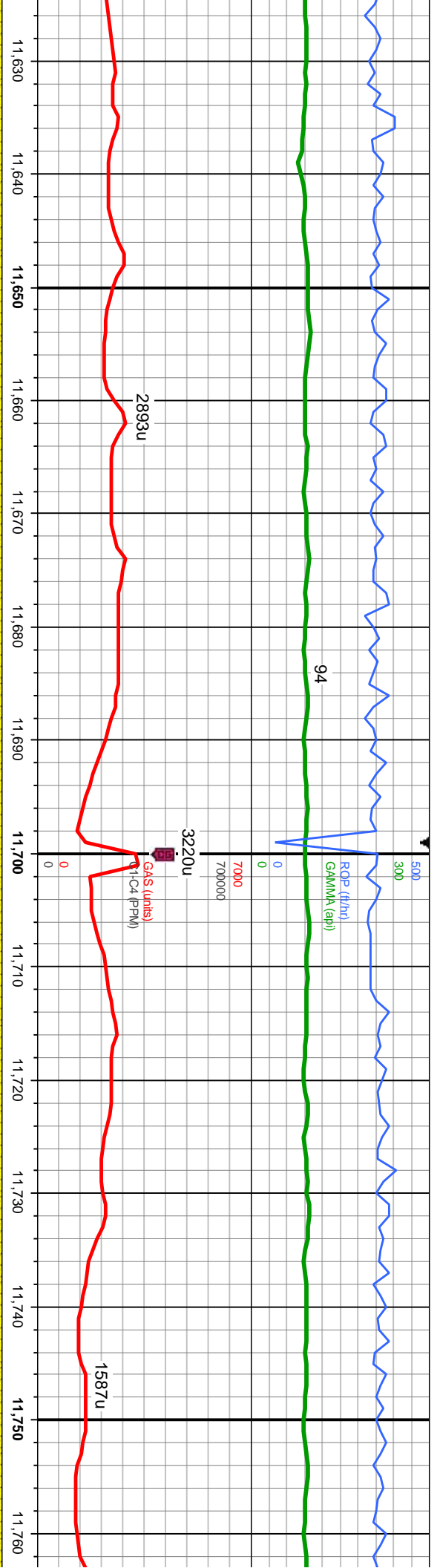
8000

100% SHY SS: lt - med brn, gy brn, wh lp, tnsl - clt gr, vt - l c gr, sb md - ang, hd, brit - fri lp, p srt, p - mod cons, p - mod cnt, sl calc, occ pyr, occ glau; OIL SHOW: mod brl, lt bl, stmg mlky cut, brl wh-lt bl solid ring, sl gn resdl ring

8000

100% SHY SS: lt - med b
occ glau; OIL SHOW: sl-r

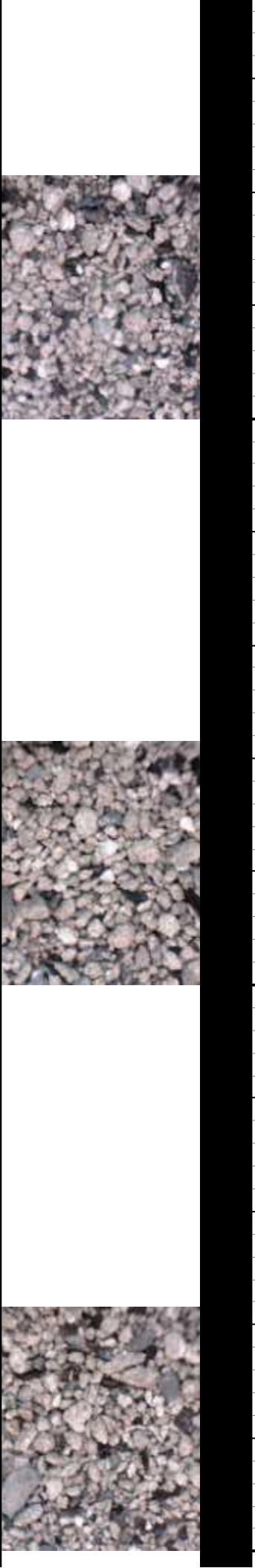
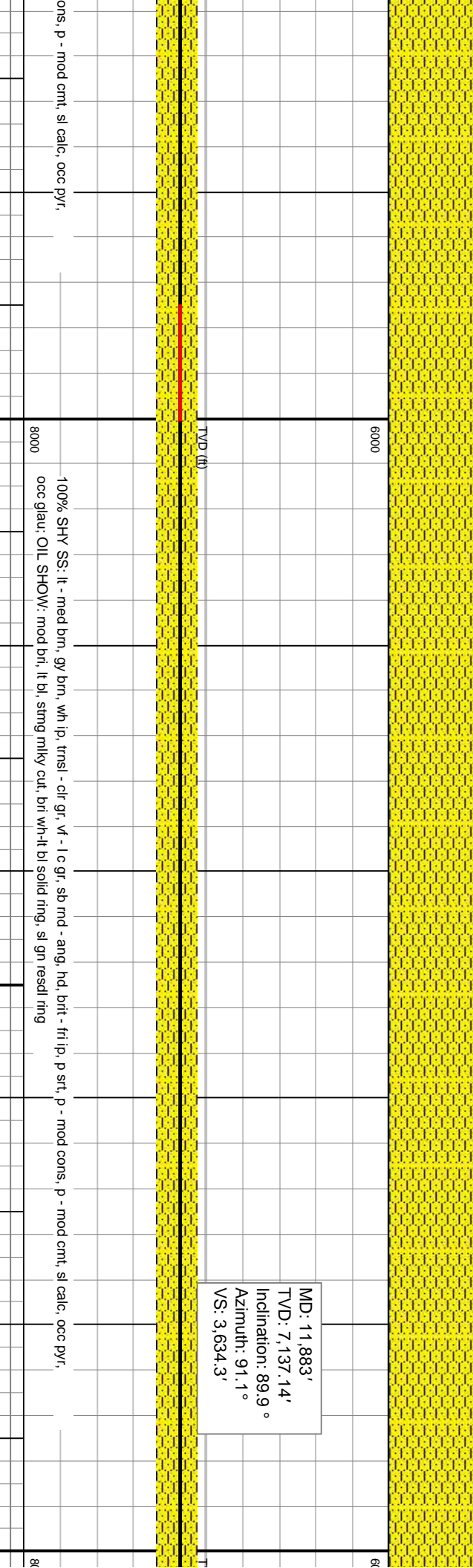
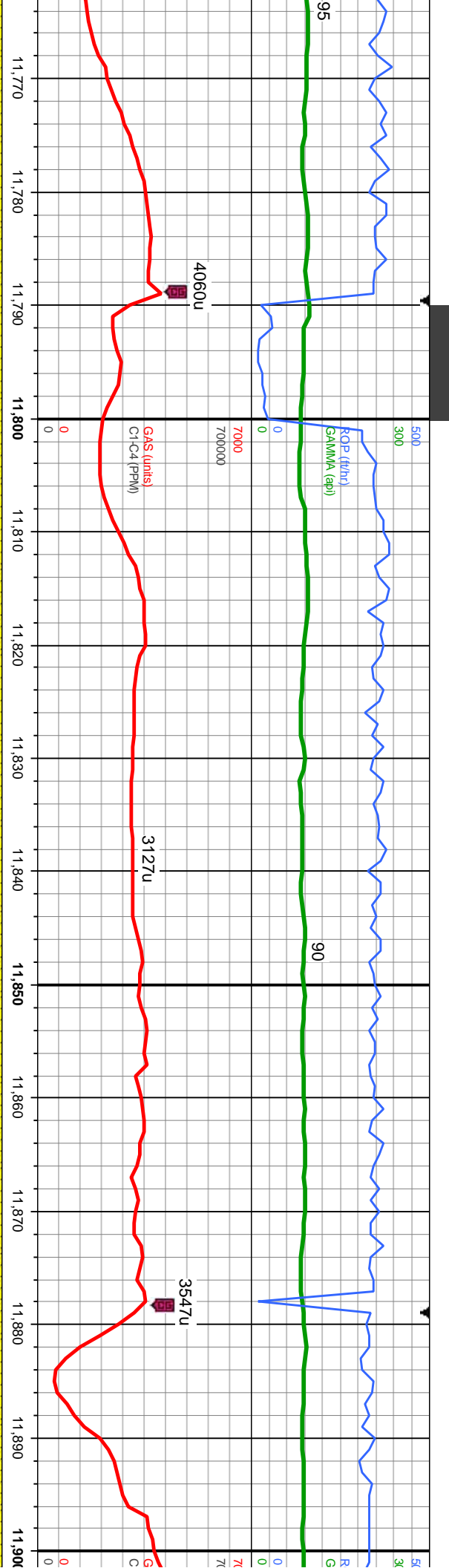


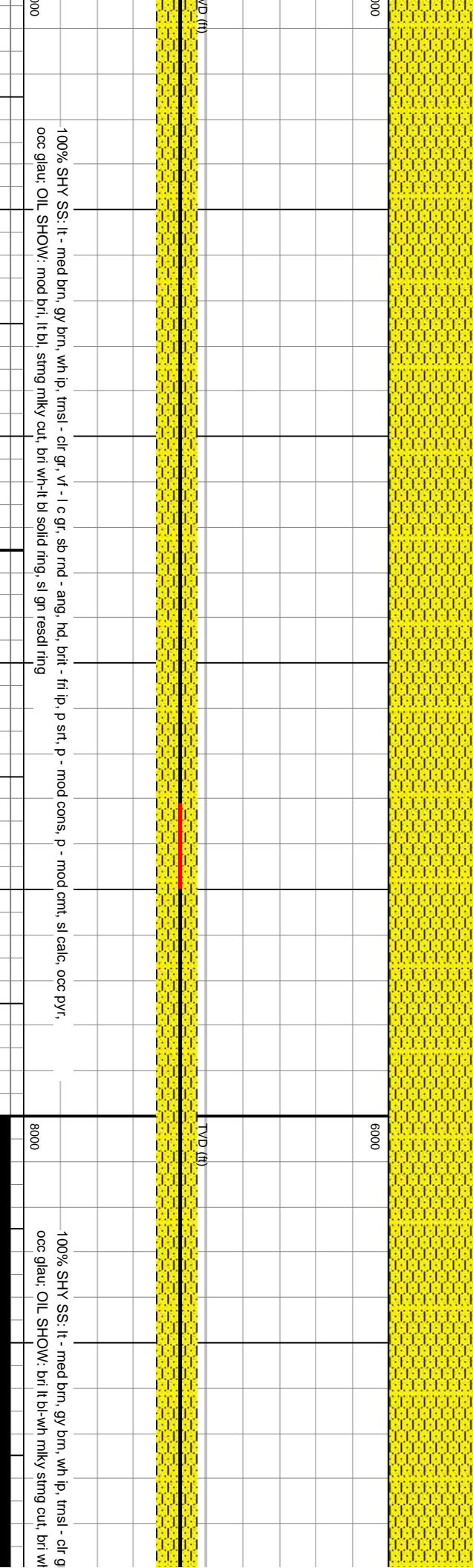
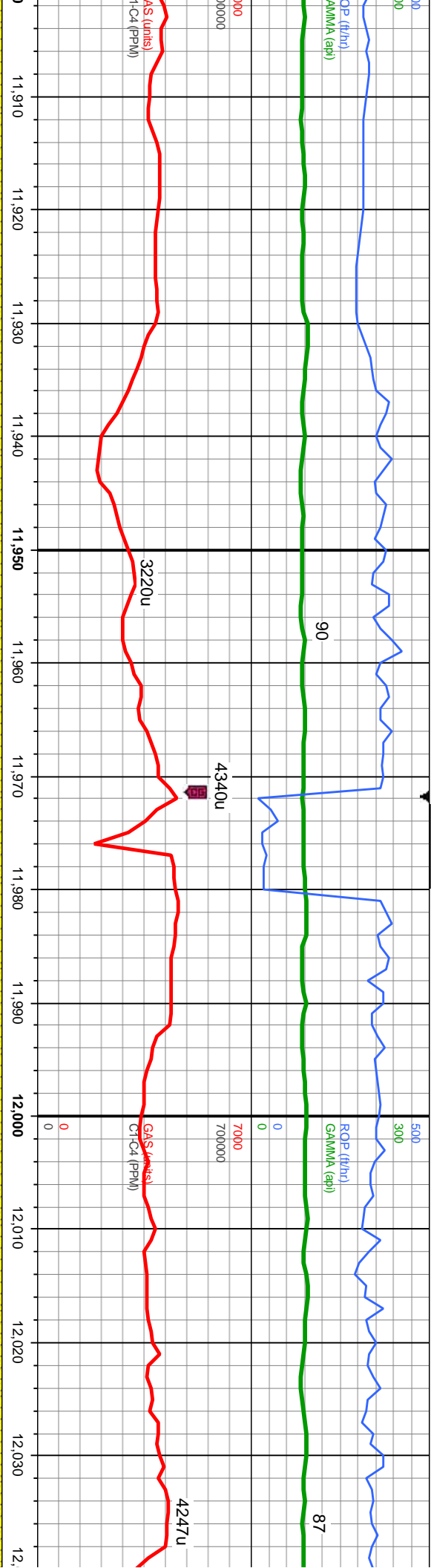


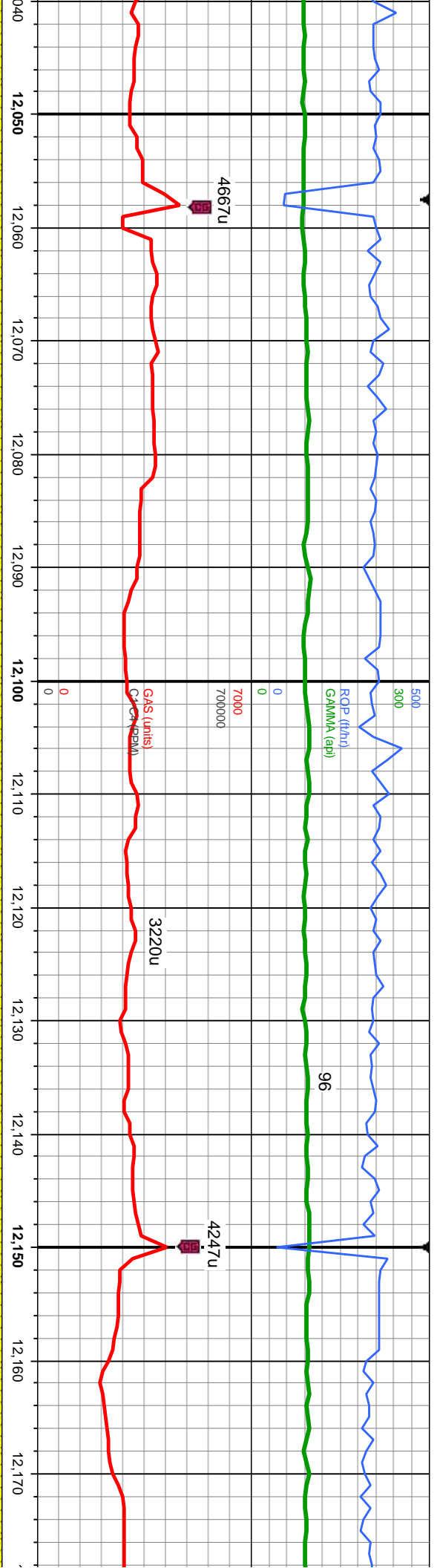
MD: 11,694'
TVD: 7,137.96'
Inclination: 90.6 °
Azimuth: 90.5 °
VS: 3,445.31'

100% SHY SS: lt - med brn, gy brn, wh ip, trnsi - clr gr, vf - lc gr, sb md - ang, hd, brit - fit ip, p srt, p - mod cons, p - mod cnt, sl calc, occ pyr, mod bri, lt bl, sting milky cut, bri wh-lt bl solid ring, sl gn resdl ring







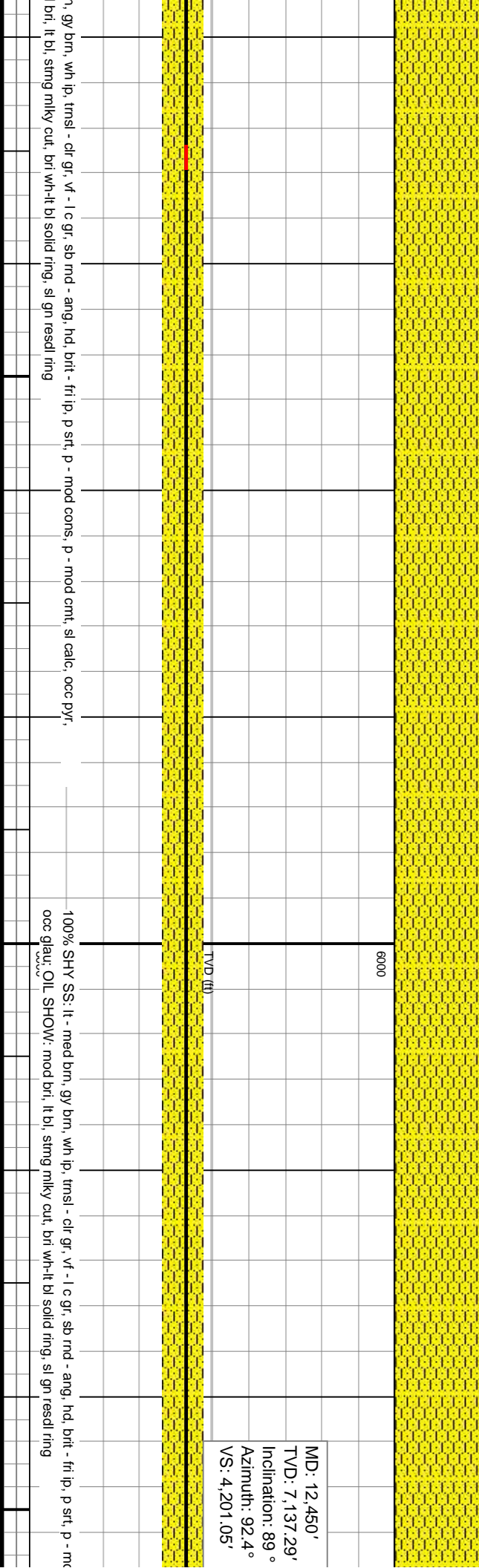
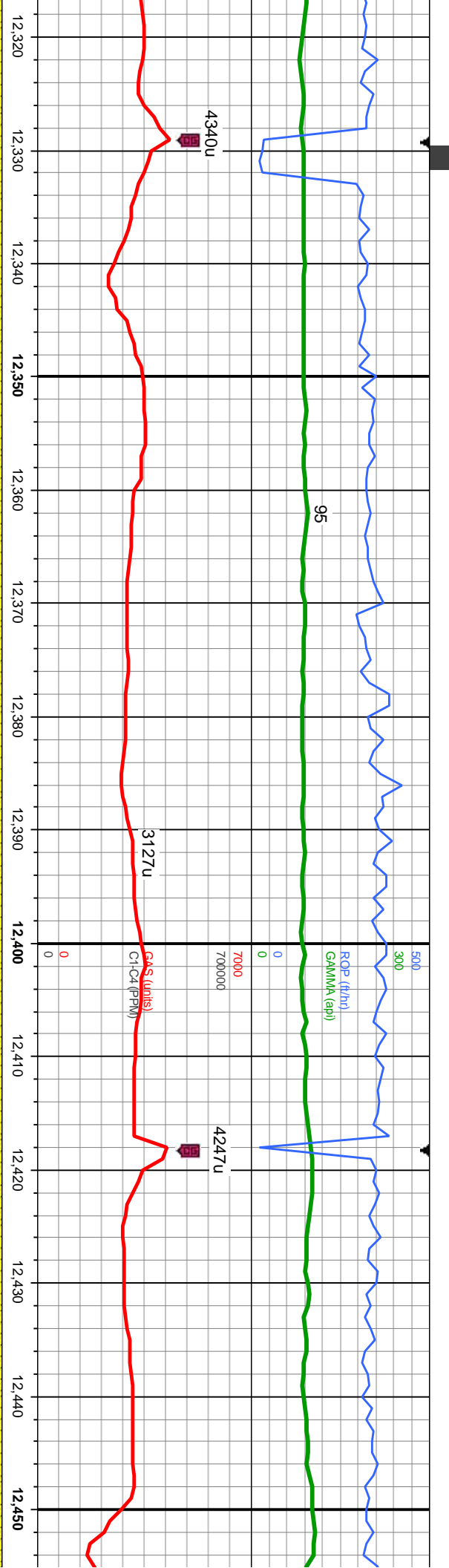


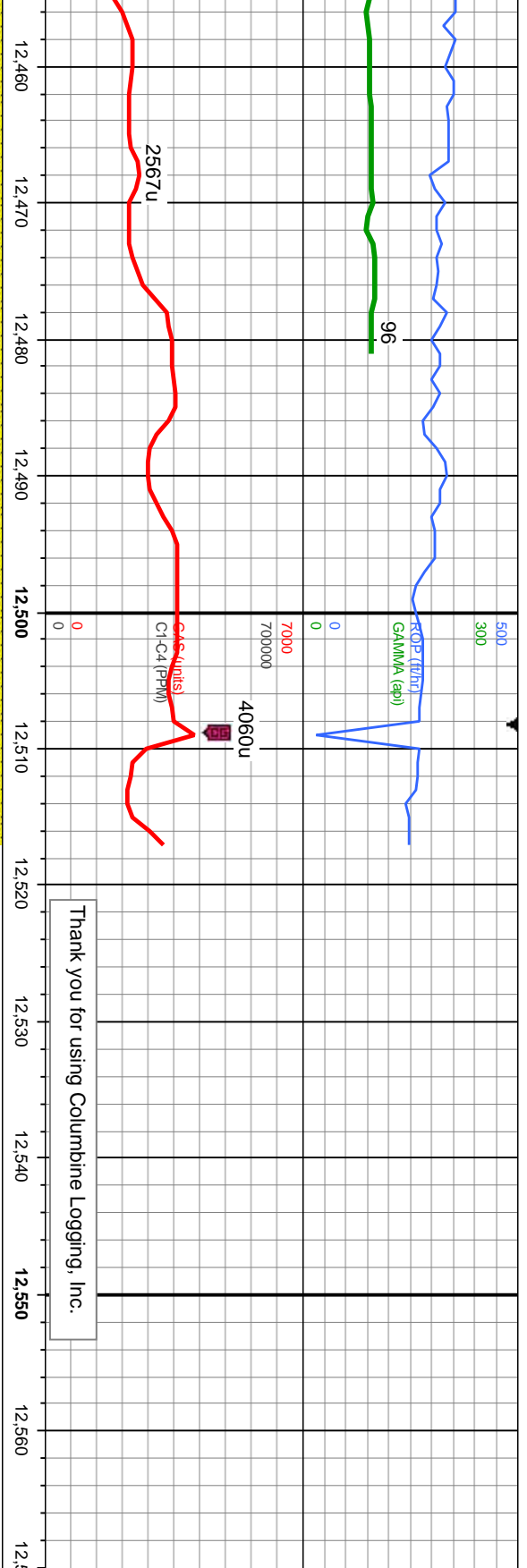
MD: 12,072'
TVD: 7,137.8'
Inclination: 89.7°
Azimuth: 91°
VS: 3,823.29'

, vř - l c gr, sb rnd - ang, hd, brit - fit ip, p sřt, p - mod cons, p - mod cmt, sl calc, occ pyr,	
thk ring, solid bri bl resdł sřn, no od	
8000	

100% SHY SS: lt - med brn, gy brn, wh ip, trnsł - cř gr, vř - l c gr, sb rnd - ang, hd, brit - fit ip, p sřt, p - mod cons, p - mod cmt
occ glau; OIL SHOW: mod bri, lt bl, stmg mlky cut, brn wh-lt bl solid ring, sl gn resdł ring







Thank you for using Columbine Logging, Inc.



6000

PTB

MD: 12,517'
TVD: 7,138'
Inclination: 89 °

TVD (ft)

TDd @ 12517' MD on 5/30/2014 at 12:15 HRS MST

cond cons, p - mod cnt, sl calc, occ pyr,

8000

