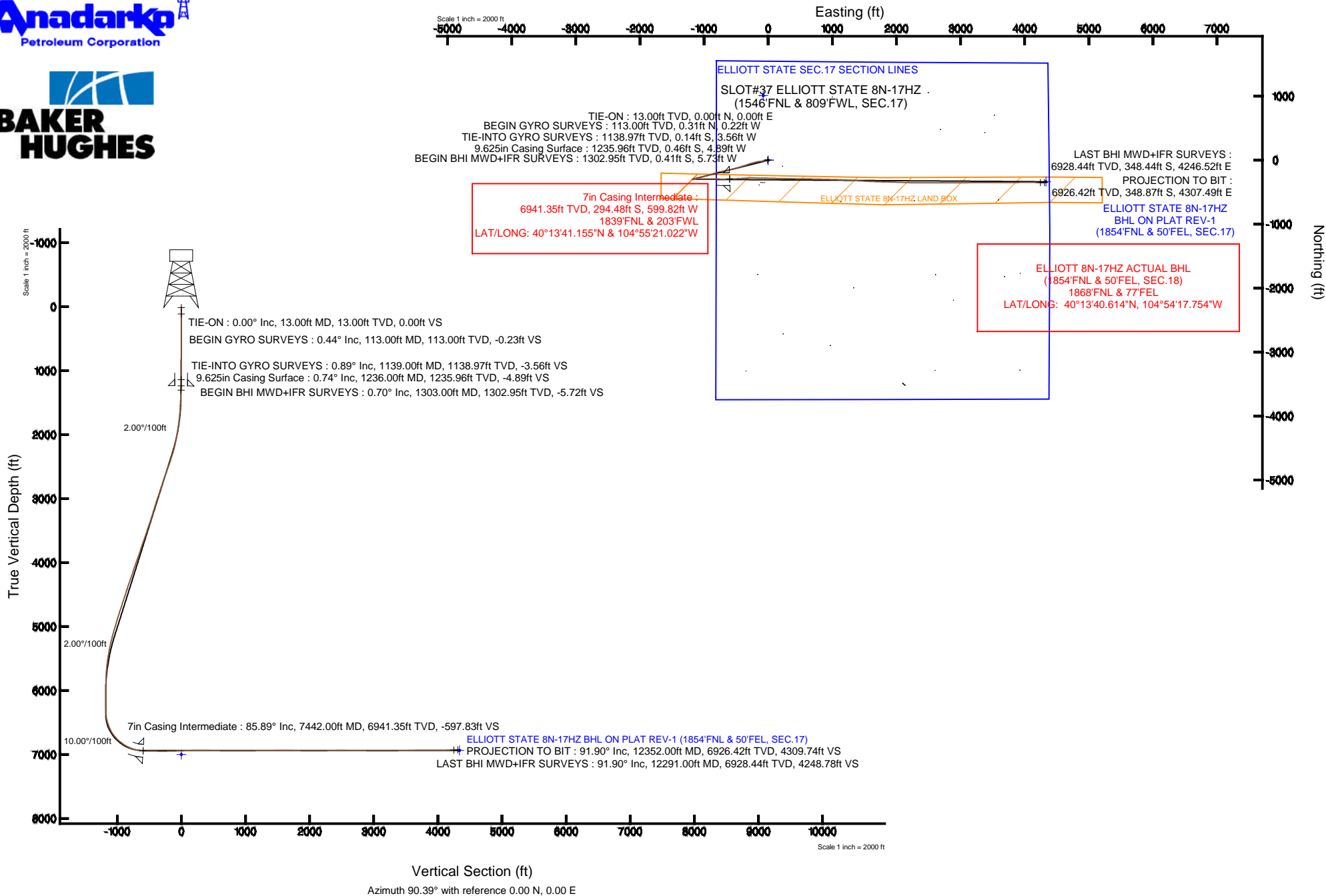


KERR-MCGEE OIL & GAS ONSHORE LP

Location: COLORADO Slot: SLOT#37 ELLIOTT STATE 8N-17HZ (1546'FNL & 809'FWL, SEC.17)
Field: WELD COUNTY (KERR MCGEE) Well: ELLIOTT STATE 8N-17HZ
Facility: SEC.17-T3N-R67W Wellbore: ELLIOTT STATE 8N-17HZ PWB

Plot reference wellpath is ELLIOTT STATE 8N-17HZ (REV-A.0) PWB

True vertical depths are referenced to ENSIGN 138 (13' RKB) (RKB)	Grid System: NAD83 / Lambert Colorado SP, Northern Zone (501), US feet
Measured depths are referenced to ENSIGN 138 (13' RKB) (RKB)	North Reference: True north
ENSIGN 138 (13' RKB) (RKB) to Mean Sea Level: 4825 feet	Scale: True distance
Mean Sea Level to Mud line (At Slot: SLOT#37 ELLIOTT STATE 8N-17HZ (1546'FNL & 809'FWL, SEC.17)): 0 feet	Depths are in feet
Coordinates are in feet referenced to Slot	Created by: ingmjmr on 6/20/2014



Actual Wellpath Report

ELLIOTT STATE 8N-17HZ AWP

Page 1 of 7

REFERENCE WELLPATH IDENTIFICATION

Operator	KERR-MCGEE OIL & GAS ONSHORE LP	Slot	SLOT#37 ELLIOTT STATE 8N-17HZ (1546'FNL & 809'FWL, SEC.17)
Area	COLORADO	Well	ELLIOTT STATE 8N-17HZ
Field	WELD COUNTY (KERR MCGEE)	Wellbore	ELLIOTT STATE 8N-17HZ AWP
Facility	SEC.17-T3N-R67W		

REPORT SETUP INFORMATION

Projection System	NAD83 / Lambert Colorado SP, Northern Zone (501), US feet	Software System	WellArchitect® 4.0.0
North Reference	True	User	Ingmjmr
Scale	0.999957	Report Generated	6/18/2014 at 12:39:02 PM
Convergence at slot	n/a	Database/Source file	Anadarko Map Checks/ELLIOTT_STATE_8N-17HZ_AWP.xml

WELLPATH LOCATION

	Local coordinates		Grid coordinates		Geographic coordinates	
	North[ft]	East[ft]	Easting[US ft]	Northing[US ft]	Latitude	Longitude
Slot Location	17.10	-77.64	3161842.55	1326761.76	40°13'44.065"N	104°55'13.289"W
Facility Reference Pt			3161920.30	1326745.17	40°13'43.896"N	104°55'12.288"W
Field Reference Pt			3197771.84	1268891.29	40°04'09.600"N	104°47'36.000"W

WELLPATH DATUM

Calculation method	Minimum curvature	ENSIGN 138 (13' RKB) (RKB) to Facility Vertical Datum	4825.00ft
Horizontal Reference Pt	Slot	ENSIGN 138 (13' RKB) (RKB) to Mean Sea Level	4825.00ft
Vertical Reference Pt	ENSIGN 138 (13' RKB) (RKB)	ENSIGN 138 (13' RKB) (RKB) to Mud Line at Slot (SLOT#37 ELLIOTT STATE 8N-17HZ (1546'FNL & 809'FWL, SEC.17))	4825.00ft
MD Reference Pt	ENSIGN 138 (13' RKB) (RKB)	Section Origin	N 0.00, E 0.00 ft
Field Vertical Reference	Mean Sea Level	Section Azimuth	94.63°

REFERENCE WELLPATH IDENTIFICATION

Operator	KERR-MCGEE OIL & GAS ONSHORE LP	Slot	SLOT#37 ELLIOTT STATE 8N-17HZ (1546'FNL & 809'FWL, SEC.1
Area	COLORADO	Well	ELLIOTT STATE 8N-17HZ
Field	WELD COUNTY (KERR MCGEE)	Wellbore	ELLIOTT STATE 8N-17HZ AWP
Facility	SEC.17-T3N-R67W		

WELLPATH DATA (112 stations) † = interpolated/extrapolated station

MD [ft]	Inclination [°]	Azimuth [°]	TVD [ft]	Vert Sect [ft]	North [ft]	East [ft]	Latitude	Longitude	DLS [°/100ft]	Comments
0.00†	0.000	324.300	0.00	0.00	0.00	0.00	40°13'44.065"N	104°55'13.289"W	0.00	
13.00	0.000	324.300	13.00	0.00	0.00	0.00	40°13'44.065"N	104°55'13.289"W	0.00	TIE-ON
113.00	0.440	324.300	113.00	-0.25	0.31	-0.22	40°13'44.068"N	104°55'13.292"W	0.44	BEGIN GYRO SURVEYS
213.00	0.400	111.910	213.00	-0.16	0.49	-0.12	40°13'44.070"N	104°55'13.291"W	0.81	
313.00	0.620	276.530	313.00	-0.37	0.42	-0.34	40°13'44.069"N	104°55'13.293"W	1.01	
413.00	0.460	139.070	412.99	-0.63	0.18	-0.61	40°13'44.067"N	104°55'13.297"W	1.01	
513.00	0.730	299.250	512.99	-0.92	0.19	-0.91	40°13'44.067"N	104°55'13.301"W	1.17	
613.00	0.480	131.840	612.99	-1.16	0.22	-1.15	40°13'44.067"N	104°55'13.304"W	1.20	
713.00	0.700	320.400	712.99	-1.26	0.41	-1.23	40°13'44.069"N	104°55'13.305"W	1.18	
813.00	0.790	223.530	812.98	-2.11	0.38	-2.09	40°13'44.069"N	104°55'13.316"W	1.12	
913.00	0.420	144.880	912.98	-2.31	-0.41	-2.35	40°13'44.061"N	104°55'13.319"W	0.82	
1013.00	0.570	336.160	1012.98	-2.32	-0.26	-2.34	40°13'44.062"N	104°55'13.319"W	0.99	
1113.00	0.790	252.800	1112.97	-3.19	-0.01	-3.20	40°13'44.065"N	104°55'13.330"W	0.92	
1139.00	0.890	248.040	1138.97	-3.54	-0.14	-3.56	40°13'44.064"N	104°55'13.335"W	0.47	TIE-INTO GYRO SURVEYS
1303.00	0.700	281.600	1302.95	-5.67	-0.41	-5.73	40°13'44.061"N	104°55'13.363"W	0.30	BEGIN BHI MWD+IFR SURVEYS
1396.00	2.500	264.600	1395.91	-8.23	-0.49	-8.30	40°13'44.060"N	104°55'13.396"W	1.98	
1490.00	3.500	262.400	1489.78	-13.06	-1.06	-13.19	40°13'44.055"N	104°55'13.459"W	1.07	
1586.00	3.400	263.900	1585.61	-18.72	-1.75	-18.92	40°13'44.048"N	104°55'13.533"W	0.14	
1678.00	4.900	266.900	1677.37	-25.29	-2.25	-25.56	40°13'44.043"N	104°55'13.619"W	1.65	
1769.00	6.800	258.700	1767.89	-34.33	-3.52	-34.72	40°13'44.030"N	104°55'13.737"W	2.28	
1861.00	7.900	262.200	1859.13	-45.74	-5.44	-46.33	40°13'44.011"N	104°55'13.886"W	1.29	
1952.00	9.500	260.600	1949.08	-59.13	-7.52	-59.93	40°13'43.991"N	104°55'14.062"W	1.78	
2044.00	11.000	254.100	2039.62	-74.72	-11.17	-75.87	40°13'43.955"N	104°55'14.267"W	2.06	
2136.00	12.200	260.300	2129.74	-92.36	-15.21	-93.89	40°13'43.915"N	104°55'14.500"W	1.88	
2228.00	14.500	263.300	2219.25	-113.07	-18.19	-114.92	40°13'43.885"N	104°55'14.771"W	2.61	
2319.00	17.100	264.900	2306.80	-137.43	-20.71	-139.56	40°13'43.860"N	104°55'15.088"W	2.90	
2411.00	19.300	259.400	2394.20	-165.44	-24.71	-167.98	40°13'43.821"N	104°55'15.455"W	3.03	
2502.00	20.400	254.900	2479.80	-194.88	-31.61	-198.08	40°13'43.753"N	104°55'15.843"W	2.07	
2593.00	19.900	254.500	2565.23	-224.35	-39.88	-228.32	40°13'43.671"N	104°55'16.233"W	0.57	
2685.00	19.100	254.800	2651.95	-253.21	-48.01	-257.93	40°13'43.591"N	104°55'16.614"W	0.88	

REFERENCE WELLPATH IDENTIFICATION

Operator	KERR-MCGEE OIL & GAS ONSHORE LP	Slot	SLOT#37 ELLIOTT STATE 8N-17HZ (1546'FNL & 809'FWL, SEC.1
Area	COLORADO	Well	ELLIOTT STATE 8N-17HZ
Field	WELD COUNTY (KERR MCGEE)	Wellbore	ELLIOTT STATE 8N-17HZ AWB
Facility	SEC.17-T3N-R67W		

WELLPATH DATA (112 stations)

MD [ft]	Inclination [°]	Azimuth [°]	TVD [ft]	Vert Sect [ft]	North [ft]	East [ft]	Latitude	Longitude	DLS [°/100ft]	Comments
2777.00	19.900	251.100	2738.68	-281.73	-57.03	-287.27	40°13'43.501"N	104°55'16.993"W	1.60	
2868.00	18.900	250.800	2824.51	-309.41	-66.89	-315.84	40°13'43.404"N	104°55'17.361"W	1.10	
2960.00	19.300	251.100	2911.44	-336.98	-76.72	-344.30	40°13'43.307"N	104°55'17.728"W	0.45	
3051.00	19.500	253.600	2997.28	-364.95	-85.88	-373.10	40°13'43.216"N	104°55'18.099"W	0.94	
3143.00	17.900	252.300	3084.42	-392.36	-94.51	-401.30	40°13'43.131"N	104°55'18.463"W	1.80	
3234.00	18.100	252.300	3170.97	-418.37	-103.06	-428.09	40°13'43.047"N	104°55'18.808"W	0.22	
3325.00	17.900	252.800	3257.51	-444.43	-111.49	-454.91	40°13'42.963"N	104°55'19.154"W	0.28	
3420.00	19.500	253.500	3347.49	-472.77	-120.31	-484.06	40°13'42.876"N	104°55'19.530"W	1.70	
3515.00	19.000	256.300	3437.18	-502.24	-128.48	-514.29	40°13'42.795"N	104°55'19.920"W	1.10	
3609.00	18.700	255.400	3526.14	-531.00	-135.90	-543.74	40°13'42.722"N	104°55'20.299"W	0.44	
3704.00	19.700	257.600	3615.86	-560.69	-143.18	-574.12	40°13'42.650"N	104°55'20.691"W	1.30	
3797.00	19.600	257.300	3703.44	-590.56	-149.98	-604.64	40°13'42.583"N	104°55'21.085"W	0.15	
3892.00	19.200	257.900	3793.05	-620.73	-156.75	-635.46	40°13'42.516"N	104°55'21.482"W	0.47	
3986.00	19.000	257.000	3881.87	-650.12	-163.43	-665.49	40°13'42.450"N	104°55'21.869"W	0.38	
4080.00	19.400	258.300	3970.65	-679.68	-170.04	-695.68	40°13'42.385"N	104°55'22.258"W	0.62	
4176.00	20.000	256.700	4061.03	-710.61	-177.05	-727.27	40°13'42.315"N	104°55'22.665"W	0.84	
4271.00	19.200	256.500	4150.52	-740.91	-184.44	-758.27	40°13'42.242"N	104°55'23.065"W	0.85	
4365.00	20.000	254.800	4239.07	-770.72	-192.26	-788.82	40°13'42.165"N	104°55'23.459"W	1.05	
4460.00	19.300	254.400	4328.54	-800.73	-200.74	-819.61	40°13'42.081"N	104°55'23.856"W	0.75	
4555.00	18.300	254.000	4418.47	-829.42	-209.07	-849.07	40°13'41.999"N	104°55'24.236"W	1.06	
4649.00	18.000	252.800	4507.80	-856.72	-217.44	-877.13	40°13'41.916"N	104°55'24.598"W	0.51	
4744.00	19.900	253.800	4597.64	-885.46	-226.29	-906.68	40°13'41.829"N	104°55'24.979"W	2.03	
4838.00	18.900	253.700	4686.30	-914.63	-235.03	-936.66	40°13'41.742"N	104°55'25.365"W	1.06	
4933.00	18.200	256.600	4776.37	-943.11	-242.78	-965.86	40°13'41.666"N	104°55'25.742"W	1.22	
5027.00	18.300	253.400	4865.64	-970.82	-250.40	-994.28	40°13'41.590"N	104°55'26.108"W	1.07	
5122.00	16.600	252.200	4956.27	-997.27	-258.81	-1021.50	40°13'41.507"N	104°55'26.459"W	1.83	
5217.00	17.600	252.300	5047.07	-1023.10	-267.33	-1048.10	40°13'41.423"N	104°55'26.802"W	1.05	
5311.00	15.600	252.300	5137.15	-1047.94	-275.49	-1073.69	40°13'41.342"N	104°55'27.132"W	2.13	
5406.00	14.000	252.700	5228.99	-1070.42	-282.79	-1096.83	40°13'41.270"N	104°55'27.430"W	1.69	
5500.00	12.600	257.200	5320.47	-1090.75	-288.45	-1117.68	40°13'41.214"N	104°55'27.699"W	1.85	

REFERENCE WELLPATH IDENTIFICATION

Operator	KERR-MCGEE OIL & GAS ONSHORE LP	Slot	SLOT#37 ELLIOTT STATE 8N-17HZ (1546'FNL & 809'FWL, SEC.1
Area	COLORADO	Well	ELLIOTT STATE 8N-17HZ
Field	WELD COUNTY (KERR MCGEE)	Wellbore	ELLIOTT STATE 8N-17HZ AWB
Facility	SEC.17-T3N-R67W		

WELLPATH DATA (112 stations) † = interpolated/extrapolated station

MD [ft]	Inclination [°]	Azimuth [°]	TVD [ft]	Vert Sect [ft]	North [ft]	East [ft]	Latitude	Longitude	DLS [°/100ft]	Comments
5595.00	9.700	258.000	5413.67	-1108.31	-292.41	-1135.62	40°13'41.175"N	104°55'27.930"W	3.06	
5690.00	8.200	256.500	5507.51	-1122.42	-295.65	-1150.04	40°13'41.143"N	104°55'28.116"W	1.60	
5783.00	6.300	261.800	5599.76	-1133.70	-297.93	-1161.54	40°13'41.121"N	104°55'28.264"W	2.16	
5878.00	4.700	264.700	5694.32	-1142.61	-299.03	-1170.57	40°13'41.110"N	104°55'28.381"W	1.71	
5973.00	2.500	237.900	5789.13	-1148.11	-300.49	-1176.20	40°13'41.095"N	104°55'28.453"W	2.86	
6164.00	1.000	327.000	5980.06	-1152.46	-301.31	-1180.64	40°13'41.087"N	104°55'28.511"W	1.40	
6449.00	1.100	113.500	6265.04	-1151.39	-300.31	-1179.49	40°13'41.097"N	104°55'28.496"W	0.71	
6543.00	1.900	82.900	6359.01	-1149.01	-300.48	-1177.11	40°13'41.095"N	104°55'28.465"W	1.18	
6637.00	12.400	82.500	6452.15	-1137.59	-298.97	-1165.53	40°13'41.110"N	104°55'28.316"W	11.17	
6731.00	20.400	82.700	6542.25	-1111.65	-295.56	-1139.23	40°13'41.144"N	104°55'27.977"W	8.51	
6825.00	27.700	89.000	6628.05	-1073.82	-293.09	-1101.08	40°13'41.168"N	104°55'27.485"W	8.22	
6921.00	39.200	91.600	6708.02	-1021.14	-293.55	-1048.26	40°13'41.164"N	104°55'26.804"W	12.07	
7018.00	47.800	89.600	6778.32	-954.61	-294.16	-981.56	40°13'41.158"N	104°55'25.944"W	8.98	
7112.00	55.400	88.600	6836.66	-881.35	-292.97	-907.96	40°13'41.170"N	104°55'24.995"W	8.13	
7207.00	64.300	91.100	6884.34	-799.57	-292.84	-825.91	40°13'41.171"N	104°55'23.937"W	9.64	
7301.00	72.500	91.900	6918.91	-712.38	-295.14	-738.61	40°13'41.148"N	104°55'22.812"W	8.76	
7390.00	84.200	89.000	6936.86	-625.61	-295.78	-651.61	40°13'41.142"N	104°55'21.690"W	13.53	
7442.00†	85.887	88.136	6941.35	-574.09	-294.48	-599.82	40°13'41.155"N	104°55'21.022"W	3.64	7" CASING POINT
7541.00	89.100	86.500	6945.68	-476.01	-289.85	-501.04	40°13'41.201"N	104°55'19.749"W	3.64	
7635.00	88.800	86.500	6947.40	-382.97	-284.11	-407.23	40°13'41.257"N	104°55'18.539"W	0.32	
7730.00	89.700	87.500	6948.64	-288.82	-279.14	-312.37	40°13'41.307"N	104°55'17.316"W	1.42	
7824.00	91.500	90.700	6947.66	-195.28	-277.67	-218.41	40°13'41.321"N	104°55'16.105"W	3.91	
7919.00	91.200	90.800	6945.42	-100.52	-278.91	-123.44	40°13'41.309"N	104°55'14.880"W	0.33	
8013.00	91.600	91.400	6943.12	-6.73	-280.71	-29.49	40°13'41.291"N	104°55'13.669"W	0.77	
8108.00	91.600	91.400	6940.47	88.08	-283.03	65.45	40°13'41.268"N	104°55'12.445"W	0.00	
8203.00	91.800	91.800	6937.65	182.91	-285.68	160.37	40°13'41.242"N	104°55'11.221"W	0.47	
8297.00	89.600	90.900	6936.51	276.74	-287.90	254.33	40°13'41.220"N	104°55'10.010"W	2.53	
8391.00	90.500	91.500	6936.42	370.57	-289.87	348.31	40°13'41.201"N	104°55'08.798"W	1.15	
8485.00	88.600	90.700	6937.16	464.38	-291.67	442.28	40°13'41.183"N	104°55'07.587"W	2.19	
8579.00	88.400	90.600	6939.62	558.12	-292.74	536.24	40°13'41.172"N	104°55'06.375"W	0.24	

REFERENCE WELLPATH IDENTIFICATION

Operator	KERR-MCGEE OIL & GAS ONSHORE LP	Slot	SLOT#37 ELLIOTT STATE 8N-17HZ (1546'FNL & 809'FWL, SEC.1
Area	COLORADO	Well	ELLIOTT STATE 8N-17HZ
Field	WELD COUNTY (KERR MCGEE)	Wellbore	ELLIOTT STATE 8N-17HZ AWB
Facility	SEC.17-T3N-R67W		

WELLPATH DATA (112 stations)

MD [ft]	Inclination [°]	Azimuth [°]	TVD [ft]	Vert Sect [ft]	North [ft]	East [ft]	Latitude	Longitude	DLS [°/100ft]	Comments
8674.00	89.100	90.600	6941.69	652.87	-293.73	631.21	40°13'41.162"N	104°55'05.151"W	0.74	
8768.00	89.900	91.400	6942.51	746.67	-295.37	725.19	40°13'41.146"N	104°55'03.939"W	1.20	
8862.00	90.400	91.500	6942.27	840.53	-297.75	819.16	40°13'41.123"N	104°55'02.728"W	0.54	
9050.00	90.100	91.400	6941.45	1028.23	-302.51	1007.10	40°13'41.075"N	104°55'00.305"W	0.17	
9239.00	90.100	92.700	6941.12	1217.04	-309.27	1195.98	40°13'41.009"N	104°54'57.870"W	0.69	
9428.00	91.200	94.000	6938.97	1405.97	-320.31	1384.63	40°13'40.899"N	104°54'55.437"W	0.90	
9617.00	90.300	92.700	6936.50	1594.90	-331.35	1573.29	40°13'40.790"N	104°54'53.005"W	0.84	
9806.00	88.400	91.300	6938.64	1783.68	-337.95	1762.15	40°13'40.725"N	104°54'50.570"W	1.25	
9995.00	88.800	91.800	6943.26	1972.35	-343.06	1951.02	40°13'40.674"N	104°54'48.135"W	0.34	
10184.00	90.700	92.100	6944.09	2161.13	-349.49	2139.90	40°13'40.610"N	104°54'45.700"W	1.02	
10373.00	91.900	89.900	6939.80	2349.69	-352.79	2328.81	40°13'40.578"N	104°54'43.265"W	1.33	
10562.00	89.600	89.900	6937.32	2538.02	-352.46	2517.78	40°13'40.581"N	104°54'40.828"W	1.22	
10753.00	89.200	89.700	6939.32	2728.33	-351.79	2708.77	40°13'40.587"N	104°54'38.366"W	0.23	
10941.00	89.600	90.200	6941.29	2915.69	-351.63	2896.76	40°13'40.589"N	104°54'35.942"W	0.34	
11130.00	89.200	89.700	6943.27	3104.05	-351.47	3085.74	40°13'40.590"N	104°54'33.506"W	0.34	
11320.00	91.000	89.900	6942.94	3293.36	-350.80	3275.74	40°13'40.596"N	104°54'31.056"W	0.95	
11510.00	91.200	89.800	6939.29	3482.67	-350.30	3465.70	40°13'40.601"N	104°54'28.607"W	0.12	
11699.00	92.000	90.300	6934.02	3670.99	-350.47	3654.62	40°13'40.599"N	104°54'26.171"W	0.50	
11887.00	89.400	88.900	6931.72	3858.23	-349.16	3842.58	40°13'40.612"N	104°54'23.748"W	1.57	
12076.00	90.200	90.100	6932.38	4046.47	-347.51	4031.57	40°13'40.628"N	104°54'21.312"W	0.76	
12291.00	91.900	90.400	6928.44	4260.79	-348.44	4246.52	40°13'40.618"N	104°54'18.540"W	0.80	LAST BHI MWD+IFR SURVEYS
12352.00	91.900	90.400	6926.42	4321.59	-348.87	4307.49	40°13'40.614"N	104°54'17.754"W	0.00	PROJECTION TO BIT

Actual Wellpath Report

ELLIOTT STATE 8N-17HZ AWP

Page 6 of 7

REFERENCE WELLPATH IDENTIFICATION

Operator	KERR-MCGEE OIL & GAS ONSHORE LP	Slot	SLOT#37 ELLIOTT STATE 8N-17HZ (1546'FNL & 809'FWL, SEC.1
Area	COLORADO	Well	ELLIOTT STATE 8N-17HZ
Field	WELD COUNTY (KERR MCGEE)	Wellbore	ELLIOTT STATE 8N-17HZ AWB
Facility	SEC.17-T3N-R67W		

HOLE & CASING SECTIONS - Ref Wellbore: ELLIOTT STATE 8N-17HZ AWB Ref Wellpath: ELLIOTT STATE 8N-17HZ AWP

String/Diameter	Start MD [ft]	End MD [ft]	Interval [ft]	Start TVD [ft]	End TVD [ft]	Start N/S [ft]	Start E/W [ft]	End N/S [ft]	End E/W [ft]
13.5in Open Hole	13.00	1257.00	1244.00	13.00	1256.96	0.00	0.00	-0.47	-5.16
9.625in Casing Surface	13.00	1236.00	1223.00	13.00	1235.96	0.00	0.00	-0.46	-4.89
8.75in Open Hole	1257.00	7505.00	6248.00	1256.96	6944.75	-0.47	-5.16	-291.86	-536.97
7in Casing Intermediate	13.00	7442.00	7429.00	13.00	6941.35	0.00	0.00	-294.48	-599.82
6.25in Open Hole	7505.00	12352.00	4847.00	6944.75	6926.42	-291.86	-536.97	-348.87	4307.49

TARGETS

Name	MD [ft]	TVD [ft]	North [ft]	East [ft]	Grid East [US ft]	Grid North [US ft]	Latitude	Longitude	Shape
ELLIOTT STATE 8N-17HZ BHL ON PLAT REV-1 (1854'FNL & 50'FEL, SEC.17)		6936.00	-335.85	4333.10	3166177.56	1326454.25	40°13'40.742"N	104°54'17.424"W	point
ELLIOTT STATE 8N-17HZ LAND BOX		7000.00	0.00	0.00	3161842.55	1326761.76	40°13'44.065"N	104°55'13.289"W	polygon
ELLIOTT STATE SEC.17 SECTION LINES		7176.00	1009.50	-77.61	3161758.35	1327770.68	40°13'54.041"N	104°55'14.290"W	polygon

WELLPATH COMPOSITION - Ref Wellbore: ELLIOTT STATE 8N-17HZ AWB Ref Wellpath: ELLIOTT STATE 8N-17HZ AWP

Start MD [ft]	End MD [ft]	Positional Uncertainty Model	Log Name/Comment	Wellbore
13.00	1139.00	Generic gyro - continuous (Standard)	MS ENERGY GYRODATA SURVEYS <113-1139>	ELLIOTT STATE 8N-17HZ AWB
1139.00	7390.00	NaviTrak (IFR)	BHI MWD+IFR SURVEYS 8 3/4" HOLE <1303-7390>	ELLIOTT STATE 8N-17HZ AWB
7390.00	12291.00	NaviTrak (IFR)	BHI MWD+IFR SURVEYS 6 1/8" HOLE <7541-12291>	ELLIOTT STATE 8N-17HZ AWB
12291.00	12352.00	Blind Drilling (std)	Projection to bit	ELLIOTT STATE 8N-17HZ AWB

Actual Wellpath Report

ELLIOTT STATE 8N-17HZ AWP

Page 7 of 7

REFERENCE WELLPATH IDENTIFICATION

Operator	KERR-MCGEE OIL & GAS ONSHORE LP	Slot	SLOT#37 ELLIOTT STATE 8N-17HZ (1546'FNL & 809'FWL, SEC.1
Area	COLORADO	Well	ELLIOTT STATE 8N-17HZ
Field	WELD COUNTY (KERR MCGEE)	Wellbore	ELLIOTT STATE 8N-17HZ AWB
Facility	SEC.17-T3N-R67W		

WELLPATH COMMENTS

MD [ft]	Inclination [°]	Azimuth [°]	TVD [ft]	Comment
13.00	0.000	324.300	13.00	TIE-ON
113.00	0.440	324.300	113.00	BEGIN GYRO SURVEYS
1139.00	0.890	248.040	1138.97	TIE-INTO GYRO SURVEYS
1303.00	0.700	281.600	1302.95	BEGIN BHI MWD+IFR SURVEYS
7442.00	85.887	88.136	6941.35	7" CASING POINT
12291.00	91.900	90.400	6928.44	LAST BHI MWD+IFR SURVEYS
12352.00	91.900	90.400	6926.42	PROJECTION TO BIT