

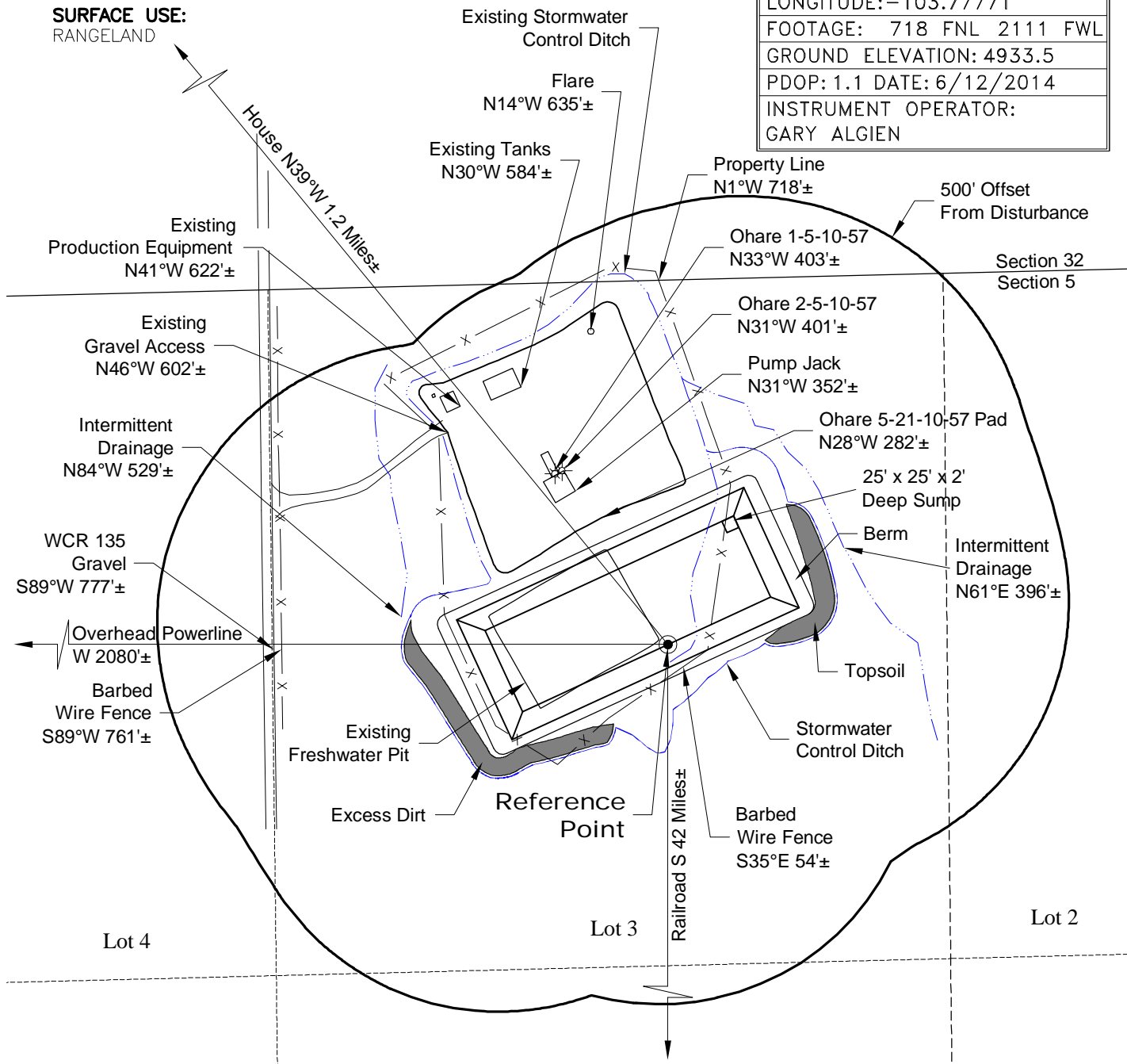
LOCATION DRAWING

PLANT COMMUNITY:
DISTURBED GRASSLAND

SURFACE USE:
RANGELAND

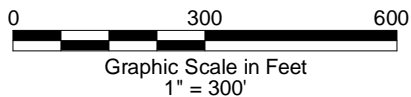
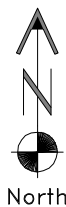
REFERENCE POINT

LATITUDE: 40.87350
LONGITUDE: -103.77771
FOOTAGE: 718 FNL 2111 FWL
GROUND ELEVATION: 4933.5
PDOP: 1.1 DATE: 6/12/2014
INSTRUMENT OPERATOR:
GARY ALGIEN



DISTURBANCE ACREAGE: 4.3±

6/18/14



LAND SURVEYING AND MAPPING
LAFAYETTE - WINTER PARK
Ph 303 666 0379 Fx 303 665 6320

CARRIZO NIOBRARA LLC
OHARE 5- 10-57
FRESHWATER PIT

LOT 3 SECTION 5 T10N R57W
6th PM WELD COUNTY COLORADO