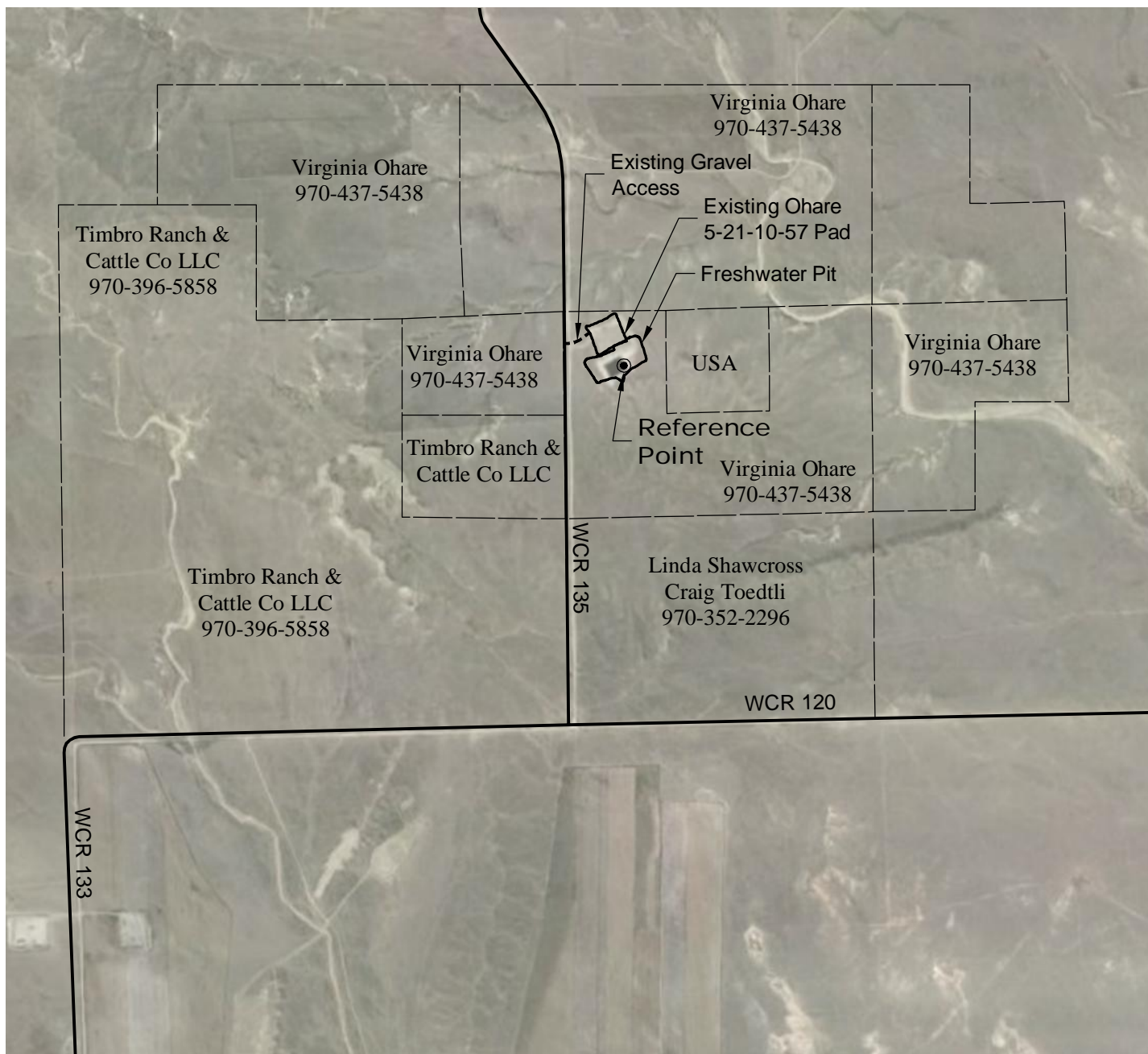


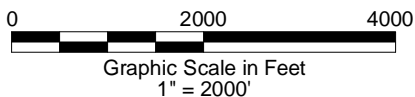
# ACCESS ROAD MAP



## DRIVING DIRECTIONS:

- MP 0.0 - Intersection of Highway 14 & WCR 129 in Raymer;  
East on Highway 14
- MP 8.6 - Left on Highway 71 (WCR 147); continue north on Highway 71
- MP 26.3 - Left on WCR 120
- MP 31.0 - Right on WCR 135
- MP 31.9 - Right on Access to pad
- MP 32.0 - Ohare 5-21-10-57 Pad

6/18/14



LAND SURVEYING AND MAPPING  
LAFAYETTE - WINTER PARK  
Ph 303 666 0379 Fx 303 665 6320

**CARRIZO NIOBRARA LLC**  
**OHARE 5- 10-57**  
**FRESHWATER PIT**

**LOT 3 SECTION 5 T10N R57W**  
**6th PM WELD COUNTY COLORADO**