



Circle B -6-66-9-0461CH

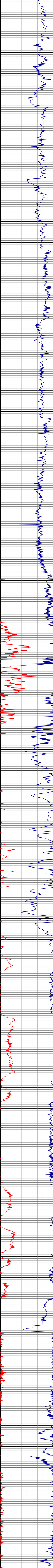
MD

1"-100'

Company: Bill Barrett Corp
Well Name: Circle B -6-66-9-0461CH
API: 05-123-37726
Rig Id: Nabors M22

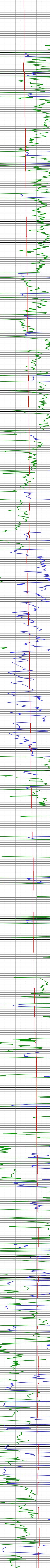
State: CO
County/Parish: Weld
Survey Company: Crescent Drilling
Job number: CA-141210

Gamma
API
150.0
300.0



Gamma
API
150.0
300.0

ROP
0
150.0
300.0
Temperature
degF
0.0
300.0



ROP
0
150.0
300.0
Temperature
degF
0.0
300.0

#43 MD(4046.00) Inc(6.4) Azm(65.4) TVD(4035.72) VS(-137.14) NS(-149.19) EWI(168.51) TEMP(140.0)
#44 MD(4140.00) Inc(5.0) Azm(49.3) TVD(4130.24) VS(-142.69) NS(155.27) EWI(175.73) TEMP(140.0)
#45 MD(4235.00) Inc(3.4) Azm(53.4) TVD(4224.59) VS(-146.69) NS(159.65) EWI(181.13) TEMP(140.0)
#46 MD(4330.00) Inc(3.8) Azm(43.8) TVD(4319.83) VS(-150.10) NS(163.36) EWI(185.34) TEMP(136.4)
#47 MD(4425.00) Inc(3.6) Azm(46.4) TVD(4414.64) VS(-153.90) NS(167.45) EWI(189.45) TEMP(143.6)
#48 MD(4520.00) Inc(4.1) Azm(42.9) TVD(4509.43) VS(-158.12) NS(171.99) EWI(193.52) TEMP(143.6)
#49 MD(4616.00) Inc(3.8) Azm(42.1) TVD(4605.20) VS(-162.67) NS(176.87) EWI(198.39) TEMP(147.2)
#50 MD(4711.00) Inc(2.4) Azm(43.5) TVD(4700.06) VS(-166.20) NS(180.65) EWI(201.87) TEMP(147.2)
#51 MD(4806.00) Inc(3.4) Azm(42.7) TVD(4794.84) VS(-169.29) NS(183.99) EWI(205.32) TEMP(149.0)
#52 MD(4901.00) Inc(3.3) Azm(51.5) TVD(4889.77) VS(-172.59) NS(187.58) EWI(209.55) TEMP(150.8)
#53 MD(4996.00) Inc(4.9) Azm(48.6) TVD(4984.53) VS(-176.69) NS(191.37) EWI(214.73) TEMP(150.8)
#54 MD(5091.00) Inc(5.0) Azm(49.0) TVD(5079.17) VS(-181.56) NS(197.37) EWI(220.90) TEMP(152.6)
#55 MD(5186.00) Inc(4.0) Azm(48.4) TVD(5173.88) VS(-186.08) NS(202.28) EWI(226.50) TEMP(154.4)
#56 MD(5281.00) Inc(2.8) Azm(47.5) TVD(5268.71) VS(-189.54) NS(206.55) EWI(230.89) TEMP(156.2)
#57 MD(5375.00) Inc(3.3) Azm(52.4) TVD(5362.58) VS(-192.47) NS(209.25) EWI(234.52) TEMP(158.0)
#58 MD(5470.00) Inc(4.0) Azm(53.2) TVD(5457.38) VS(-196.78) NS(212.91) EWI(239.34) TEMP(158.0)
#59 MD(5565.00) Inc(4.2) Azm(50.5) TVD(5552.14) VS(-199.60) NS(217.10) EWI(244.88) TEMP(159.8)
#60 MD(5660.00) Inc(4.8) Azm(50.4) TVD(5646.85) VS(-203.93) NS(221.85) EWI(249.32) TEMP(161.6)
#61 MD(5755.00) Inc(3.8) Azm(52.3) TVD(5741.58) VS(-208.00) NS(226.31) EWI(255.88) TEMP(163.4)
#62 MD(5851.00) Inc(4.6) Azm(50.7) TVD(5837.32) VS(-211.99) NS(230.69) EWI(261.84) TEMP(163.4)
#63 MD(5946.00) Inc(3.6) Azm(55.2) TVD(5931.08) VS(-215.69) NS(234.47) EWI(266.82) TEMP(167.0)
#64 MD(6041.00) Inc(2.3) Azm(66.5) TVD(6025.84) VS(-217.90) NS(237.29) EWI(271.17) TEMP(168.8)
#65 MD(6135.00) Inc(2.3) Azm(38.4) TVD(6120.86) VS(-220.00) NS(239.61) EWI(274.25) TEMP(168.8)
#66 MD(6230.00) Inc(1.8) Azm(53.9) TVD(6215.80) VS(-222.29) NS(241.59) EWI(278.54) TEMP(170.6)
#67 MD(6325.00) Inc(1.7) Azm(79.2) TVD(6310.76) VS(-223.16) NS(243.13) EWI(279.23) TEMP(174.2)
#68 MD(6420.00) Inc(1.4) Azm(138.9) TVD(6405.73) VS(-222.40) NS(242.52) EWI(281.38) TEMP(176.8)
#69 MD(6515.00) Inc(1.8) Azm(128.1) TVD(6500.69) VS(-226.46) NS(246.70) EWI(283.30) TEMP(170.6)
#71 MD(6611.00) Inc(2.3) Azm(155.5) TVD(6596.63) VS(-217.47) NS(237.85) EWI(285.30) TEMP(158.0)
#72 MD(6642.00) Inc(2.9) Azm(167.7) TVD(6627.60) VS(-216.12) NS(238.52) EWI(285.72) TEMP(156.2)
#73 MD(6674.00) Inc(5.9) Azm(182.7) TVD(6659.50) VS(-213.69) NS(234.08) EWI(285.82) TEMP(156.2)
#74 MD(6705.00) Inc(3.3) Azm(186.9) TVD(6690.22) VS(-209.64) NS(230.00) EWI(285.44) TEMP(159.8)
#75 MD(6750.00) Inc(15.3) Azm(189.8) TVD(6734.17) VS(-200.29) NS(220.54) EWI(283.38) TEMP(159.8)
#76 MD(6800.00) Inc(18.6) Azm(190.4) TVD(6781.98) VS(-186.16) NS(206.19) EWI(281.41) TEMP(159.8)
#77 MD(6845.00) Inc(22.1) Azm(194.2) TVD(6824.16) VS(-171.16) NS(190.92) EWI(278.04) TEMP(163.4)
#78 MD(6895.00) Inc(26.5) Azm(192.7) TVD(6869.74) VS(-151.53) NS(170.91) EWI(273.27) TEMP(163.4)
#79 MD(6940.00) Inc(31.3) Azm(189.7) TVD(6909.12) VS(-130.54) NS(149.58) EWI(266.10) TEMP(165.2)
#80 MD(6990.00) Inc(35.4) Azm(186.8) TVD(6950.88) VS(-103.68) NS(122.38) EWI(265.18) TEMP(167.0)
#81 MD(7035.00) Inc(41.5) Azm(182.9) TVD(6996.11) VS(-78.05) NS(94.52) EWI(262.89) TEMP(168.8)
#82 MD(7085.00) Inc(47.6) Azm(180.9) TVD(7021.73) VS(-41.17) NS(59.48) EWI(261.76) TEMP(168.8)
#83 MD(7130.00) Inc(50.9) Azm(181.9) TVD(7051.10) VS(-7.24) NS(25.41) EWI(260.32) TEMP(170.6)
#84 MD(7180.00) Inc(54.9) Azm(182.5) TVD(7081.26) VS(32.40) NS(-14.43) EWI(259.38) TEMP(170.6)
#85 MD(7225.00) Inc(60.3) Azm(180.2) TVD(7105.36) VS(70.21) NS(-52.40) EWI(258.51) TEMP(170.6)
#86 MD(7275.00) Inc(64.9) Azm(179.2) TVD(7128.37) VS(114.50) NS(-96.79) EWI(258.73) TEMP(172.4)
#87 MD(7320.00) Inc(67.5) Azm(179.0) TVD(7146.52) VS(155.61) NS(-137.94) EWI(259.49) TEMP(174.2)
#88 MD(7370.00) Inc(70.9) Azm(178.1) TVD(7164.26) VS(202.28) NS(-184.67) EWI(260.17) TEMP(174.2)
#89 MD(7415.00) Inc(74.0) Azm(179.4) TVD(7177.84) VS(245.11) NS(-227.56) EWI(260.74) TEMP(174.2)
#90 MD(7468.00) Inc(78.8) Azm(179.2) TVD(7191.20) VS(296.31) NS(-278.84) EWI(261.36) TEMP(176.0)
#91 MD(7511.00) Inc(80.2) Azm(180.6) TVD(7199.77) VS(338.35) NS(-320.97) EWI(261.43) TEMP(177.8)
#92 MD(7535.00) Inc(82.9) Azm(180.1) TVD(7203.30) VS(362.91) NS(-344.71) EWI(261.29) TEMP(177.8)
#93 MD(7577.00) Inc(84.5) Azm(179.5) TVD(7207.81) VS(403.67) NS(-386.45) EWI(261.43) TEMP(177.8)
#94 MD(7646.00) Inc(87.5) Azm(180.4) TVD(7212.65) VS(471.34) NS(-454.28) EWI(261.49) TEMP(177.8)
#95 MD(7672.00) Inc(87.5) Azm(179.9) TVD(7213.83) VS(498.24) NS(-481.25) EWI(261.42) TEMP(178.6)
#96 MD(7717.00) Inc(89.1) Azm(178.8) TVD(7215.17) VS(543.14) NS(-526.23) EWI(261.53) TEMP(179.8)
#97 MD(7767.00) Inc(89.4) Azm(178.1) TVD(7215.82) VS(595.09) NS(-576.21) EWI(261.58) TEMP(181.4)
#98 MD(7863.00) Inc(90.6) Azm(177.7) TVD(7215.82) VS(689.04) NS(-672.14) EWI(266.80) TEMP(185.0)
#99 MD(7957.00) Inc(90.9) Azm(177.6) TVD(7214.59) VS(782.99) NS(-766.05) EWI(270.66) TEMP(186.6)
#100 MD(8050.00) Inc(90.1) Azm(177.6) TVD(7213.76) VS(877.85) NS(-860.97) EWI(274.83) TEMP(192.2)
#101 MD(8148.00) Inc(89.9) Azm(177.3) TVD(7213.76) VS(973.92) NS(-956.87) EWI(278.91) TEMP(194.0)
#102 MD(8243.00) Inc(89.2) Azm(179.7) TVD(7213.68) VS(1068.63) NS(-1051.61) EWI(281.39) TEMP(194.0)
#103 MD(8338.00) Inc(89.7) Azm(179.0) TVD(7213.76) VS(1163.66) NS(-1146.82) EWI(282.47) TEMP(192.2)
#104 MD(8433.00) Inc(90.6) Azm(180.2) TVD(7213.51) VS(1258.49) NS(-1241.82) EWI(283.13) TEMP(194.0)
#105 MD(8528.00) Inc(90.7) Azm(180.0) TVD(7212.43) VS(1353.23) NS(-1336.81) EWI(282.97) TEMP(196.8)
#106 MD(8622.00) Inc(91.1) Azm(180.1) TVD(7210.96) VS(1448.90) NS(-1430.89) EWI(282.89) TEMP(195.6)
#107 MD(8717.00) Inc(91.5) Azm(180.3) TVD(7208.80) VS(1541.71) NS(-1525.79) EWI(282.55) TEMP(198.4)
#108 MD(8812.00) Inc(90.5) Azm(180.5) TVD(7207.14) VS(1636.41) NS(-1620.76) EWI(281.89) TEMP(201.2)
#109 MD(8907.00) Inc(90.7) Azm(180.8) TVD(7206.15) VS(1731.10) NS(-1715.75) EWI(280.81) TEMP(203.0)
#110 MD(9002.00) Inc(90.9) Azm(180.6) TVD(7204.82) VS(1825.79) NS(-1810.79) EWI(279.49) TEMP(210.2)
#111 MD(9098.00) Inc(91.3) Azm(180.4) TVD(7202.98) VS(1921.43) NS(-1906.79) EWI(278.48) TEMP(212.0)
#112 MD(9183.00) Inc(91.6) Azm(180.3) TVD(7200.58) VS(2016.13) NS(-2001.67) EWI(277.90) TEMP(210.2)
#113 MD(9268.00) Inc(90.7) Azm(179.7) TVD(7198.67) VS(2110.89) NS(-2096.69) EWI(277.80) TEMP(210.2)
#114 MD(9382.00) Inc(90.8) Azm(180.4) TVD(7197.44) VS(2204.64) NS(-2190.64) EWI(277.82) TEMP(212.0)
#115 MD(9478.00) Inc(90.5) Azm(180.5) TVD(7196.35) VS(2300.33) NS(-2286.63) EWI(277.07) TEMP(215.6)
#116 MD(9573.00) Inc(90.9) Azm(181.9) TVD(7195.19) VS(2394.95) NS(-2381.60) EWI(275.08) TEMP(217.4)
#117 MD(9668.00) Inc(90.1) Azm(179.4) TVD(7194.36) VS(2489.63) NS(-2476.58) EWI(274.00) TEMP(213.8)
#118 MD(9763.00) Inc(90.0) Azm(178.1) TVD(7194.28) VS(2584.53) NS(-2572.59) EWI(273.07) TEMP(219.2)
#119 MD(9859.00) Inc(89.7) Azm(177.7) TVD(7194.53) VS(2680.47) NS(-2667.49) EWI(273.59) TEMP(221.0)
#120 MD(9954.00) Inc(91.7) Azm(178.4) TVD(7193.37) VS(2775.40) NS(-2762.43) EWI(282.82) TEMP(217.4)
#121 MD(10040.00) Inc(92.2) Azm(178.1) TVD(7190.14) VS(2870.27) NS(-2857.57) EWI(282.75) TEMP(222.8)
#122 MD(10144.00) Inc(91.7) Azm(177.4) TVD(7196.90) VS(2965.17) NS(-2952.20) EWI(289.45) TEMP(219.2)
#123 MD(10240.00) Inc(91.4) Azm(177.4) TVD(7184.31) VS(3061.11) NS(-3048.09) EWI(293.80) TEMP(213.8)
#124 MD(10335.00) Inc(90.4) Azm(176.6) TVD(7182.81) VS(3156.03) NS(-3142.89) EWI(297.12) TEMP(213.8)
#125 MD(10430.00) Inc(89.9) Azm(177.8) TVD(7182.57) VS(3250.96) NS(-3237.94) EWI(300.10) TEMP(221.0)
#126 MD(10525.00) Inc(88.8) Azm(176.1) TVD(7180.81) VS(3345.99) NS(-3329.81) EWI(305.19) TEMP(224.6)
#127 MD(10620.00) Inc(89.0) Azm(178.1) TVD(7183.81) VS(3440.94) NS(-3427.59) EWI(309.62) TEMP(217.4)
#128 MD(10715.00) Inc(90.1) Azm(177.1) TVD(7184.56) VS(3535.93) NS(-3522.00) EWI(317.25) TEMP(219.2)
#129 MD(10810.00) Inc(90.2) Azm(176.7) TVD(7184.31) VS(3630.92) NS(-3617.57) EWI(322.99) TEMP(219.2)
#130 MD(10905.00) Inc(91.5) Azm(178.3) TVD(7182.90) VS(3725.87) NS(-3712.57) EWI(326.53) TEMP(222.6)
#131 MD(11001.00) Inc(90.4) Azm(177.6) TVD(7181.31) VS(3821.50) NS(-3808.09) EWI(329.96) TEMP(219.2)
#132 MD(11096.00) Inc(91.1) Azm(178.9) TVD(7180.08) VS(3915.72) NS(-3902.03) EWI(332.92) TEMP(219.2)
#133 MD(11190.00) Inc(91.4) Azm(177.5) TVD(7178.00) VS(4010.63) NS(-3996.95) EWI(335.98) TEMP(224.6)
#134 MD(11285.00) Inc(91.0) Azm(175.2) TVD(7176.01) VS(4105.60) NS(-4091.73) EWI(342.03) TEMP(228.0)
#135 MD(11380.00) Inc(91.5) Azm(175.3) TVD(7173.94) VS(4200.57) NS(-4186.38) EWI(349.89) TEMP(222.6)
#136 MD(11476.00) Inc(90.3) Azm(175.8) TVD(7172.43) VS(4295.54) NS(-4281.59) EWI(359.01) TEMP(226.4)
#137 MD(11571.00) Inc(90.5) Azm(172.8) TVD(7171.77) VS(4391.41) NS(-4378.59) EWI(370.09) TEMP(230.0)
#138 MD(11666.00) Inc(90.2) Azm(171.7) TVD(7171.19) VS(4486.21) NS(-4470.41) EWI(382.90) TEMP(230.0)
#139 MD(11760.00) Inc(90.7) Azm(173.5) TVD(7170.67) VS(4580.09) NS(-4569.98) EWI(388.75) TEMP(230.0)