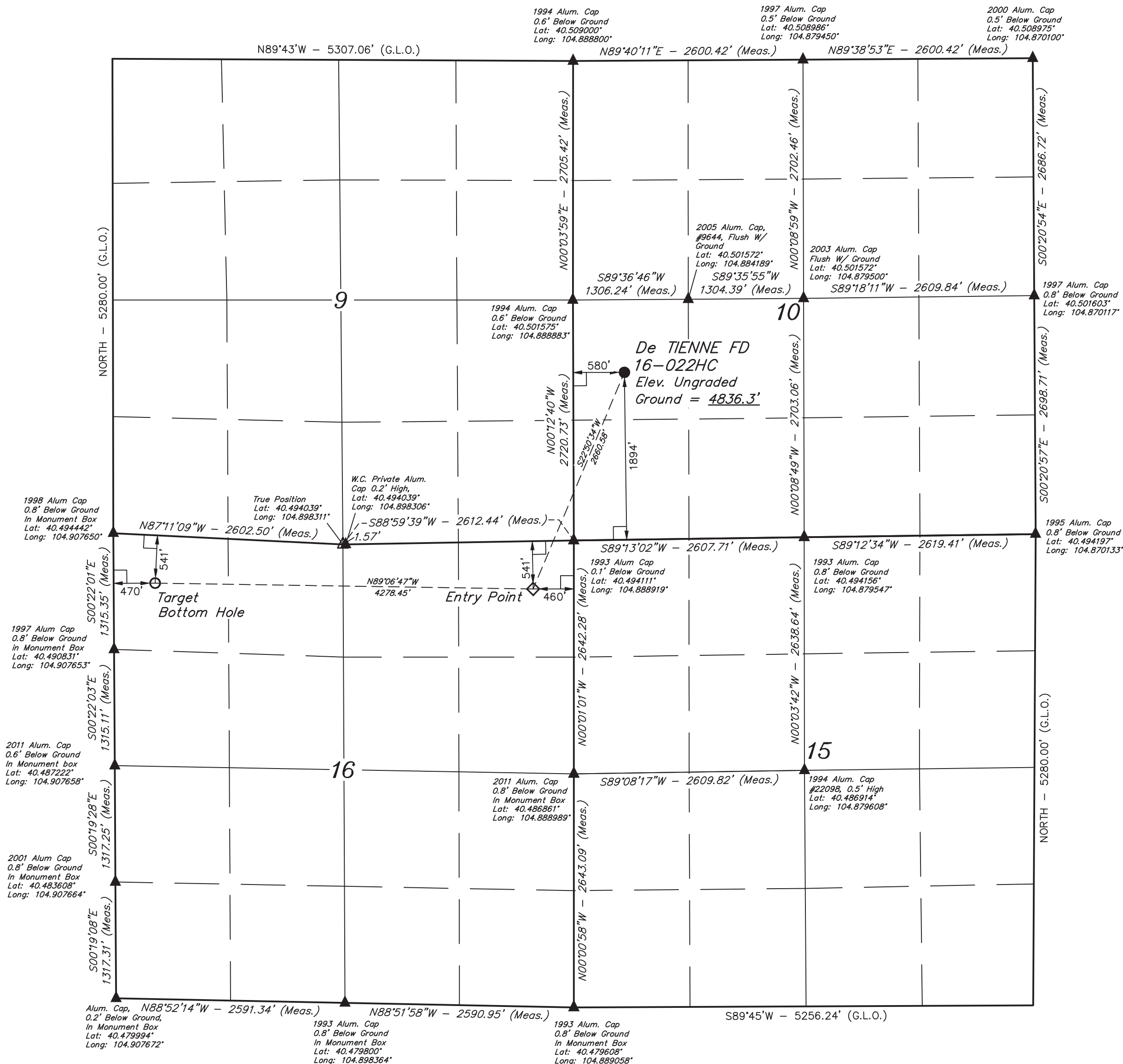


LEGEND:

- └─ = 90° SYMBOL
● = PROPOSED WELLHEAD.
○ = TARGET BOTTOM HOLE.
◇ = ENTRY POINT
▲ = SECTION CORNERS LOCATED.
△ = SECTION CORNERS RE-ESTABLISHED.
(Not Set on Ground.)

T6N, R67W, 6th P.M.

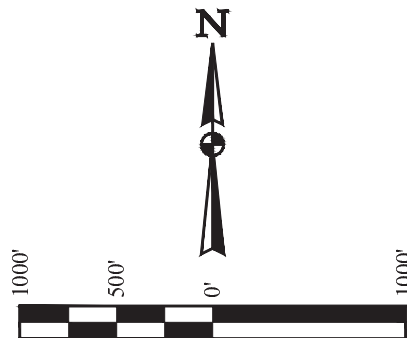


BASIS OF BEARINGS
BASIS OF BEARINGS IS A G.P.S. OBSERVATION

BASIS OF ELEVATION
USGS COOPERATIVE BASE NETWORK CONTROL STATION,
DESIGNATION "VERMILYEA", NGS DATA SHEET LISTS THE
NAVD 88 ELEVATION AS BEING 5026 FEET.



UELS, LLC
Corporate Office * 85 South 200 East
Vernal, UT 84078 * (435) 789-1017



CERTIFICATE
THIS IS TO CERTIFY THAT THE ABOVE IS A TRUE AND CORRECT PLAT OF THE
NOTES OF ACTUAL SURVEYS MADE BY ME OR UNDER MY SUPERVISION
AND THAT THE SAME ARE TRUE AND CORRECT TO THE BEST OF MY
KNOWLEDGE AND BELIEF.

RECORDED LAND SURVEYOR
REGISTRATION NO. 38285
STATE OF COLORADO
JUL 14 2014

GREAT WESTERN OIL & GAS COMPANY

De TIENNE FD 16-022HC
NW 1/4 SW 1/4, SECTION 10, T6N, R67W, 6th P.M.
WELD COUNTY, COLORADO

SURVEYED BY: CHAD MEIERS, C.M. DATE: 05-15-14
DRAWN BY: J.W. DATE DRAWN: 05-22-14
SCALE: 1" = 1000' REVISED: 06-09-14

WELL LOCATION PLAT

PDOP = 2.1

NAD 83 (TARGET BOTTOM HOLE)	NAD 83 (ENTRY POINT)	NAD 83 (SURFACE LOCATION)
LATITUDE = 40°29'34.37" (40.492881)	LATITUDE = 40°29'33.40" (40.492611)	LATITUDE = 40°29'57.55" (40.499319)
LONGITUDE = 104°54'21.46" (104.905961)	LONGITUDE = 104°53'26.12" (104.890589)	LONGITUDE = 104°53'12.51" (104.886808)
NAD 27 (TARGET BOTTOM HOLE)	NAD 27 (ENTRY POINT)	NAD 27 (SURFACE LOCATION)
LATITUDE = 40°29'34.44" (40.492900)	LATITUDE = 40°29'33.47" (40.492631)	LATITUDE = 40°29'57.61" (40.499336)
LONGITUDE = 104°54'19.56" (104.905433)	LONGITUDE = 104°53'24.22" (104.890061)	LONGITUDE = 104°53'10.61" (104.886281)