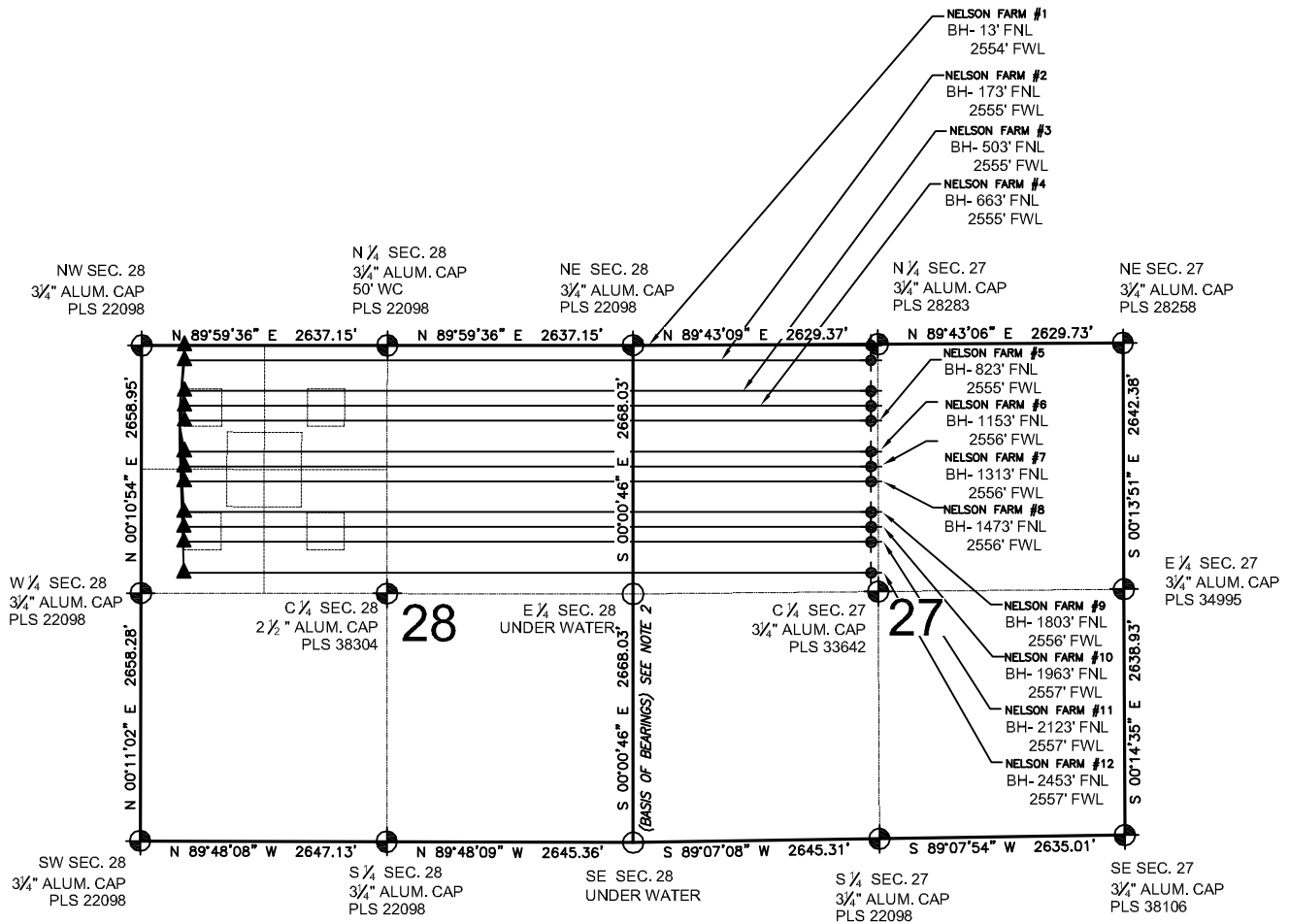


# NELSON FARM 28-A MULTI-WELL PLAN

SECTION 28, TOWNSHIP 7 NORTH, RANGE 67 WEST, 6TH P.M.



## LEGEND

- ⊕ = EXISTING MONUMENT
- ⊙ = CALCULATED POSITION
- = PROPOSED WELL
- ◆ = EXISTING WELL
- ⬮ = BOTTOM HOLE
- ▲ = LANDING POINT
- LP = LANDING POINT
- BH = BOTTOM HOLE

## NOTES:

1. THIS FIELD SURVEY CONFORMS TO THE MINIMUM STANDARDS SET BY THE C.O.G.C.C., RULE NO. 215
  2. BEARINGS AND DISTANCE SHOWN HEREON ARE GRID AND BASED ON THE COLORADO STATE PLANE COORDINATE SYSTEM, NAD 83/2011 BETWEEN MONUMENTS AS LABELED HEREON AND ELEVATIONS SHOWN ARE NAVD 88, AS DERIVED BY GPS OBSERVATIONS.
  3. GRID DISTANCES ARE SHOWN, AS MEASURED IN THE FIELD, WITH TIES TO WELLS MEASURED PERPENDICULAR TO SECTION LINES.
- NELSON FARM #1 TO BE AT 704' FNL, 409' FWL. BOTTOM HOLE AT 13' FNL & 2554' FWL.
- NELSON FARM #2 TO BE AT 732' FNL, 409' FWL. BOTTOM HOLE AT 173' FNL & 2555' FWL.
- NELSON FARM #3 TO BE AT 760' FNL, 409' FWL. BOTTOM HOLE AT 503' FNL & 2555' FWL.
- NELSON FARM #4 TO BE AT 788' FNL, 409' FWL. BOTTOM HOLE AT 663' FNL & 2555' FWL.
- NELSON FARM #5 TO BE AT 816' FNL, 409' FWL. BOTTOM HOLE AT 823' FNL & 2555' FWL.
- NELSON FARM #6 TO BE AT 844' FNL, 409' FWL. BOTTOM HOLE AT 1153' FNL & 2556' FWL.
- NELSON FARM #7 TO BE AT 872' FNL, 409' FWL. BOTTOM HOLE AT 1313' FNL & 2556' FWL.
- NELSON FARM #8 TO BE AT 900' FNL, 409' FWL. BOTTOM HOLE AT 1473' FNL & 2556' FWL.
- NELSON FARM #9 TO BE AT 928' FNL, 408' FWL. BOTTOM HOLE AT 1803' FNL & 2556' FWL.
- NELSON FARM #10 TO BE AT 956' FNL, 408' FWL. BOTTOM HOLE AT 1963' FNL & 2557' FWL.
- NELSON FARM #11 TO BE AT 984' FNL, 408' FWL. BOTTOM HOLE AT 2123' FNL & 2557' FWL.
- NELSON FARM #12 TO BE AT 1012' FNL, 408' FWL. BOTTOM HOLE AT 2453' FNL & 2557' FWL.

## NOTES:

1. THIS FIELD SURVEY CONFORMS TO THE MINIMUM STANDARDS SET BY THE C.O.G.C.C., RULE NO. 215
2. BEARINGS AND DISTANCE SHOWN HEREON ARE GRID AND BASED ON THE COLORADO STATE PLANE COORDINATE SYSTEM, NAD 83/2011 BETWEEN MONUMENTS AS LABELED HEREON AND ELEVATIONS SHOWN ARE NAVD 88, AS DERIVED BY GPS OBSERVATIONS.
3. GRID DISTANCES ARE SHOWN, AS MEASURED IN THE FIELD, WITH TIES TO WELLS MEASURED PERPENDICULAR TO SECTION LINES.

PREPARED BY:



## EXTRACTION OIL & GAS

FIELD DATE: 04-25-14	PAD NAME: NELSON FARM 28-A
DRAWING DATE: 05-06-14	SURFACE LOCATION: NW 1/4 NW 1/4, SEC. 28, T7N, R67W, 6TH P.M.
BY: MDC	CHECKED: DRF
WELD COUNTY, COLORADO	

