



Physical Address: 345 Comanche St.
Mail to: Box 384 Kiowa, CO 80117
Ph. 303-621-8672 - Fax 303-621-7749
www.highprairiesurvey.com

Job # 14123 SALEN #14-35

Inv # 3105

High Prairie Surveying of Kiowa, Colorado, in accordance with a request from **Nighthawk Production LLC**, has determined the location of **SALEN #14-35 (Surface Location)** to be **792 feet FSL**, and **2214 feet FWL**, and **SALEN #14-35 (Bottom Hole Location)** to be **620 feet FSL**, and **2027 feet FWL** (90° off Section lines) of Section **35**, Township **5s**, Range **54w** of the 6th Principal Meridian, **Washington County**, Colorado.

Date: Staked on 04/18/14 drawn on 04/24/14.

Re: Staked by Elijah Frane

Drawn: Drawn by Dustin Cotter

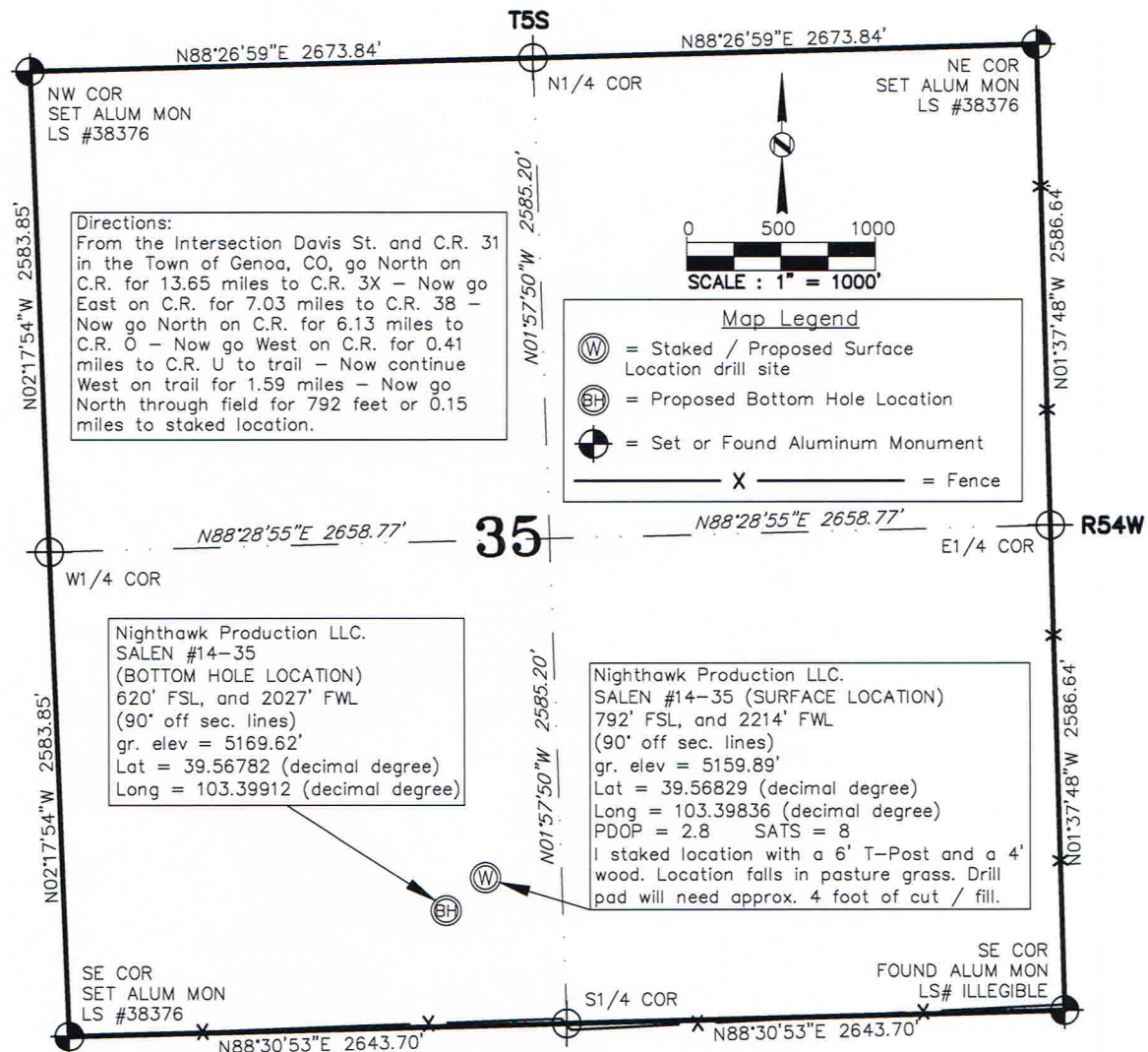
Basis of Elevation Spot: USGS BM = TETLOW, PID = KJ0482, H-Order = Adjusted, V-Order = Scaled, Stability = Unknown, P-DOP = 2.6, Sats = 7 US NAD 83 CO-C 502, Lat. = 39.55762, Long. = W103.43345, Elevation = 5256.00 gr. (us FTL)

Notes: See Location Drawing for improvements within 500' of the proposed well pad / head.

The ground elevation at staked surface location = 5159.89' gr.

This drawing does not represent a monumented survey or Land Survey Plat.

Basis of Bearing: Bearings were determined based on the South line of Section 35 to bear N88°30'53"E with all other bearings contained herein relative thereto.





Physical Address: 345 Comanche St.
Mail to: Box 384 Kiowa, CO 80117
Ph. 303-621-8672 - Fax 303-621-7749
www.highprairiesurvey.com

Job # 14123 SALEN #14-35

Inv # 3105

High Prairie Surveying of Kiowa, Colorado, in accordance with a request from **Nighthawk Production LLC**, has determined the location of **SALEN #14-35 (Surface Location)** to be **792 feet FSL**, and **2214 feet FWL**, and **SALEN #14-35 (Bottom Hole Location)** to be **620 feet FSL**, and **2027 feet FWL** (90° off Section lines) of Section **35**, Township **5s**, Range **54w** of the 6th Principal Meridian, **Washington County**, Colorado.

Date: Staked on 04/18/14 drawn on 04/24/14.

Re: Staked by Elijah Frane

Drawn: Drawn by Dustin Cotter

Basis of Elevation Spot: USGS BM = TETLOW, PID = KJ0482, H-Order = Adjusted, V-Order = Scaled, Stability = Unknown, P-DOP = 2.6, Sats = 7 US NAD 83 CO-C 502, Lat. = 39.55762, Long. = W103.43345, Elevation = 5256.00 gr. (us FT).

Notes: See Location Drawing for improvements within 500' of the proposed well pad / head.

The ground elevation at staked surface location = 5159.89' gr.

This drawing does not represent a monumented survey or Land Survey Plat.

Basis of Bearing: Bearings were determined based on the South line of Section 35 to bear N88°30'53"E with all other bearings contained herein relative thereto.

