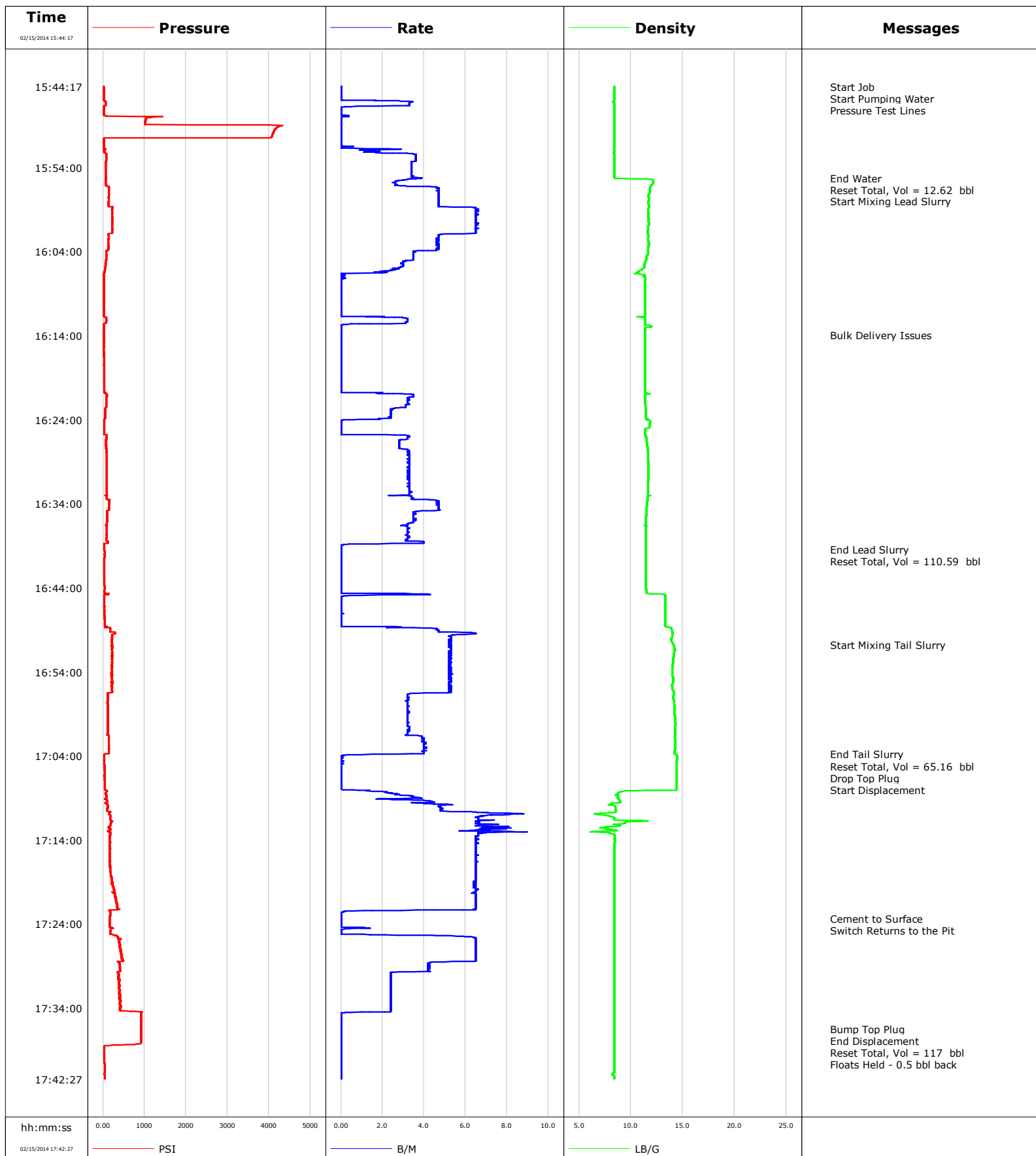


Well Razor Federal 26J-2310B
Field
Engineer Michael Simon/T Morrow
Country United States

Client Whiting
SIR No. C3ZB-00317
Job Type 9 5/8 Surface
Job Date 02-15-2014





Cementing Service Report

					Customer Whiting			Job Number C3ZB-00317							
Well Razor Federal 26J-2310B 26J-2310B				Location (legal) Cheyenne			Schlumberger Location Rock Springs			Job Start Feb/15/2014					
Field		Formation Name/Type Clean-Sandstone			Deviation		Bit Size 13.5 in		Well MD 1560.3 ft		Well TVD 1560.0 ft				
County Weld		State/Province Colorado			BHP		BHST 99 degF		BHCT 82 degF		Pore Press. Gradient				
Well Master		API/UWI													
Rig Name Xtreme 18		Drilled For Oil		Service Via Land		Casing/Liner									
Offshore Zone		Well Class New		Well Type Development		Depth, ft		Size, in		Weight, lb/ft		Grade		Thread	
						1560.3		9.630		36.0		J55		8RD	
Drilling Fluid Type		Max. Density		Plastic Viscosity		0.0		0.000		0.0					
						Tubing/Drill Pipe		Depth,		Size,		Weight,		Grade	
Service Line Cementing		Job Type 9 5/8 Surface													
Max. Allowed Tub. Press 3000 psi		Max. Allowed Ann. Press		WH Connection Single Cement head		Perforations/Open Hole									
Service Instructions						Top,		Bottom,				No. of Shots		Total Interval	
														Diameter	
		Treat Down Casing		Displacement 117.0 bbl		Packer Type		Packer Depth							
		Tubing Vol.		Casing Vol. 120.6 bbl		Annular Vol. 138.0 bbl		Openhole Vol. 260.0 bbl							
Casing/Tubing Secured <input checked="" type="checkbox"/>		1 Hole Vol. Circulated prior to Cement <input checked="" type="checkbox"/>		Casing Tools				Squeeze Job							
Lift Pressure 772 psi				Shoe Type Float				Squeeze Type							
Pipe Rotated <input type="checkbox"/>		Pipe Reciprocated <input type="checkbox"/>		Shoe Depth 1560.3 ft				Tool Type							
No. Centralizers		Top Plugs 1		Bottom Plugs		Stage Tool Type				Tool Depth					
Cement Head Type Single				Stage Tool Depth				Tail Pipe Size							
Job Scheduled For Feb/15/2014		Arrived on Location Feb/15/2014		Leave Location Feb/15/2014		Collar Type Float				Tail Pipe Depth					
						Collar Depth 1517.9 ft				Sqz. Total Vol.					
Date	Time 24-hr clock	Treating Pressure PSI	Flow Rate B/M	Density LB/G	Volume BBL	Stage BBL	Message								
01/01/1970	00:00:15						Started Acquisition								
01/01/1970	00:00:15						Reset Total, Vol = 14.87 bbl								
01/01/1970	00:00:15						Reset Total, Vol = 105.02 bbl								
01/01/1970	00:00:15						Reset Total, Vol = 68.38 bbl								
02/15/2014	15:44:17	12	0.0	8.41	0.0	0.0									
02/15/2014	15:44:18						Start Job								
02/15/2014	15:44:18	13	0.0	8.41	0.0	0.0									
02/15/2014	15:44:21						Start Pumping Water								
02/15/2014	15:44:21	12	0.0	8.41	0.0	0.0									
02/15/2014	15:44:22						Pressure Test Lines								
02/15/2014	15:44:22	12	0.0	8.41	0.0	0.0									
02/15/2014	15:45:15	12	0.0	8.41	0.0	0.0									
02/15/2014	15:48:15	1030	0.0	8.40	2.2	2.2									
02/15/2014	15:51:15	20	0.0	8.40	2.2	2.2									
02/15/2014	15:54:15	68	3.4	8.40	10.2	10.2									
02/15/2014	15:55:14						End Water								
02/15/2014	15:55:14	70	3.8	8.43	13.6	13.6									
02/15/2014	15:55:15						Reset Total, Vol = 12.62 bbl								
02/15/2014	15:55:15	69	3.8	8.44	13.6	13.6									
02/15/2014	15:57:15	134	4.7	11.70	7.6	7.6									
02/15/2014	15:58:00						Start Mixing Lead Slurry								

Well Razor Federal 26J-2310B 26J-2310B			Field		Job Start Feb/15/2014	Customer Whiting		Job Number C3ZB-00317
Date	Time 24-hr clock	Treating Pressure PSI	Flow Rate B/M	Density LB/G	Volume BBL	Stage BBL	Message	
02/15/2014	16:00:15	227	6.5	11.71	24.6	24.6		
02/15/2014	16:03:15	130	4.7	11.73	41.5	41.5		
02/15/2014	16:06:15	39	2.3	10.81	52.0	52.0		
02/15/2014	16:09:15	21	0.0	11.37	52.6	52.6		
02/15/2014	16:12:15	73	3.2	11.36	54.2	54.2		
02/15/2014	16:13:55						Bulk Delivery Issues	
02/15/2014	16:13:55	23	0.0	11.36	55.3	55.3		
02/15/2014	16:15:15	23	0.0	11.36	55.3	55.3		
02/15/2014	16:18:15	25	0.0	11.37	55.3	55.3		
02/15/2014	16:21:15	94	3.5	11.37	56.7	56.7		
02/15/2014	16:24:15	30	0.0	11.86	64.3	64.3		
02/15/2014	16:27:15	73	2.8	11.58	68.6	68.6		
02/15/2014	16:30:15	89	3.3	11.68	78.4	78.4		
02/15/2014	16:33:15	95	3.4	11.61	88.2	88.2		
02/15/2014	16:36:15	89	3.4	11.47	100.3	100.3		
02/15/2014	16:39:15	32	0.0	11.44	108.6	108.6		
02/15/2014	16:39:27						End Lead Slurry	
02/15/2014	16:39:27	33	0.0	11.44	108.6	108.6		
02/15/2014	16:39:30						Reset Total, Vol = 110.59 bbl	
02/15/2014	16:39:30	34	0.0	11.44	108.6	108.6		
02/15/2014	16:42:15	33	0.0	11.45	0.0	0.0		
02/15/2014	16:45:15	32	0.0	13.30	0.8	0.8		
02/15/2014	16:48:15	38	0.0	13.32	0.8	0.8		
02/15/2014	16:50:47						Start Mixing Tail Slurry	
02/15/2014	16:50:47	220	5.3	14.10	11.9	11.9		
02/15/2014	16:51:15	237	5.3	14.23	14.3	14.3		
02/15/2014	16:54:15	214	5.3	13.98	30.1	30.1		
02/15/2014	16:57:15	114	3.2	14.10	44.4	44.4		
02/15/2014	17:00:15	114	3.2	14.29	54.0	54.0		
02/15/2014	17:03:15	142	4.0	14.24	65.0	65.0		
02/15/2014	17:03:47						End Tail Slurry	
02/15/2014	17:03:47	42	2.7	14.23	67.1	67.1		
02/15/2014	17:03:49						Reset Total, Vol = 65.16 bbl	
02/15/2014	17:03:49	31	1.5	14.30	67.2	67.2		
02/15/2014	17:03:51						Drop Top Plug	
02/15/2014	17:03:51	25	0.7	14.37	0.0	0.0		
02/15/2014	17:03:52						Start Displacement	
02/15/2014	17:03:52	25	0.4	14.40	0.0	0.0		
02/15/2014	17:06:15	36	0.0	14.41	0.1	0.1		
02/15/2014	17:09:15	102	3.5	8.93	3.2	3.2		
02/15/2014	17:12:15	185	6.6	8.78	20.8	20.8		
02/15/2014	17:15:15	159	6.5	8.41	41.0	41.0		
02/15/2014	17:18:15	207	6.5	8.41	60.5	60.5		
02/15/2014	17:21:15	310	6.5	8.41	80.0	80.0		
02/15/2014	17:23:19						Cement to Surface	
02/15/2014	17:23:19	165	0.0	8.41	87.3	87.3		
02/15/2014	17:23:52						Switch Returns to the Pit	
02/15/2014	17:23:52	164	0.0	8.41	87.3	87.3		
02/15/2014	17:24:15	163	0.0	8.41	87.3	87.3		
02/15/2014	17:27:15	451	6.5	8.41	99.8	99.8		
02/15/2014	17:30:15	375	2.4	8.41	114.3	114.3		
02/15/2014	17:33:15	431	2.4	8.41	121.5	121.5		
02/15/2014	17:36:15	920	0.0	8.42	124.5	124.5		
02/15/2014	17:36:28						Bump Top Plug	

Well Razor Federal 26J-2310B 26J-2310B			Field		Job Start Feb/15/2014		Customer Whiting		Job Number C3ZB-00317	
Date	Time 24-hr clock	Treating Pressure PSI	Flow Rate B/M	Density LB/G	Volume BBL	Stage BBL	Message			
02/15/2014	17:36:28	919	0.0	8.42	124.5	124.5				
02/15/2014	17:36:45						Reset Total, Vol = 117 bbl			
02/15/2014	17:36:45	918	0.0	8.42	124.5	124.5				
02/15/2014	17:39:03						Floats Held - 0.5 bbl back			
02/15/2014	17:39:03	32	0.0	8.42	0.0	0.0				
02/15/2014	17:39:15	32	0.0	8.42	0.0	0.0				

Post Job Summary

Average Pump Rates, bbl/min					Volume of Fluid Injected, bbl			
Slurry 4.2	N2	Mud 0.0	Maximum Rate 9.0	Total Slurry 175.0	Mud 0.0	Spacer 12.0	N2	
Treating Pressure Summary, psi					Breakdown Fluid			
Maximum 4334	Final 32	Average 217	Bump Plug to	Breakdown	Type	Volume	Density	
Avg. N2 Percent		Designed Slurry Volume 170.0 bbl	Displacement 117.0 bbl	Mix Water Temp 40 degF	Cement Circulated to Surface? <input checked="" type="checkbox"/>	Volume 35.0 bbl		
					Washed Thru Perfs <input type="checkbox"/>	To		
Customer or Authorized Representative Kevin Moseley			Schlumberger Supervisor Michael Simon/T Morrow			Circulation Lost <input type="checkbox"/>	Job Completed <input checked="" type="checkbox"/>	
					-		-	